



Around Spitsbergen

11. – 20. August 2018

MV Plancius



MV *Plancius* was named after the Dutch astronomer, cartographer, geologist and vicar Petrus Plancius (1552-1622). *Plancius* was built in 1976 as an oceanographic research vessel for the Royal Dutch Navy and was named *Hr. Ms. Tydeman*. The ship sailed for the Royal Dutch Navy until June 2004 when she was purchased by Oceanwide Expeditions and completely refit in 2007, being converted into a 114-passenger expedition vessel. *Plancius* is 89 m (267 feet) long, 14.5 m (43 feet) wide and has a maximum draft of 5 m, with an Ice Strength rating of 1D, top speed of 12+ knots and three diesel engines generating 1230 hp each.

Captain Alexey Nazarov

and his international crew of 45

including

Chief Officer:	Svein Rubach	[Norway]
Second Officer:	Romanas Vicas	[Lithuania]
Third Officer:	Mindaugas Oginskas	[Lithuania]
Chief Engineer:	Sebastian Alexandru	[Romania]
Hotel Manager:	Zsuzsanna Varga	[Hungary]
Asst. Hotel Manager:	Gabor Ferencz	[Hungary]
Chef:	Ralf Barthel	[Germany]
Sous Chef:	Ivan Yuriychuk	[Ukraine]
Ship's Physician:	Bruno De Geeter	[Belgium]

and

Expedition Leader:	Christian Engelke	[Germany/Norway]
Asst. Expedition Leader:	Sandra Petrowitz	[Germany]
Expedition Guide:	Fritz Hertel	[Germany]
Expedition Guide:	Gérard Bodineau	[France]
Expedition Guide:	Irene Kastner	[Svalbard]
Expedition Guide:	Julia Wellner	[Germany/Svalbard]
Expedition Guide:	Lucas Humbert	[France]
Expedition Guide:	Johanne Skrefsrud	[Norway]



Day 1 – Saturday, 11. August 2018

Embarkation in Longyearbyen

1600 GPS Position: 78° 13.7' N / 015° 36.1' E

Wind: calm **Sea state:** calm **Weather:** light overcast **Temperature:** 10°C

From the plane we got a first glimpse of Spitsbergen's impressive terrain of mountains and delta systems. At first glance, this seemed like a wild and inhabitable place, but as we were about to learn it is home to a lot of life. For many of us, Longyearbyen was our first stop, visiting the museum and the church or maybe shopping some extra warm clothes before leaving civilisation. Ready for adventure and exploration we got on board M/V *Plancius*, the ship that would be our home for the next nine days. We were greeted by our expedition leader, Christian, and our hotel manager, Zsuzsanna, and shown to our cabins with our luggage already waiting for us.

Gathering in the observation lounge we were briefed about safety on board. The briefing was held by the Third Officer who was talking about ship safety and how to prepare for the worst. A general-alarm drill (seven short blasts followed by one long blast) was made, and we all took the SOLAS orange life jackets and mustered in the lounge guided by crew and staff. After a roll call to assure everyone was present, we went out on deck to have a look at the lifeboats as *Plancius* was navigating out of Adventfjorden.

In the lounge Christian invited us for another briefing, now about life on board and introducing the expedition team ready to explore the wilderness with us. Zsuzsanna introduced us to the interiors of the ship, hotel operations and dining room where we would be served delicious food. Captain Alexey joined us in the end for a welcoming toast of sparkling wine or juice before we headed down to the dining room for our first scrumptious dinner prepared by Head Chef Ralf and his staff.



Day 2 – Sunday, 12. August 2018

Kongsfjorden: Ny-Ålesund & Ny-London

0800 GPS Position: 78° 55.2' N, 012° 24.9' E

Wind: NE 1 **Sea state:** calm **Weather:** cloudy **Temperature:** 6°C

Early in the morning we heard Christian's wake-up call, and the expedition had officially started. Some of us were already up, enjoying the outer decks and breathing in the fresh arctic air. *Plancius* was sailing slowly in Kongsfjorden in front of the very scenic glacier Kronebreen.

After having breakfast, we attended the mandatory briefing about zodiac operations and polar bear safety. Then, we were called to get our rubber boots used to go ashore with the zodiacs. Quickly, we got dressed for the first activity of the trip: visiting Ny Ålesund. The reason for the town's foundation was coal mining, which resulted in construction of the northernmost railway, which can still be seen. The company setting up the mining village was Norwegian and had its headquarters in the coastal town of Ålesund, thus the name Ny Ålesund (New Ålesund). Once a mining village, now Ny Ålesund is an international research centre.

Some of us visited the museum, the post office and the gift shop before gathering by the Amundsen bust. Here Gérard told us about the life of Amundsen, the Norwegian explorer who was the first to reach the South Pole, and his expedition on the airship Norge which became the first to fly over the North Pole in 1926. Amundsen disappeared in 1928 while coming to rescue Nobile's expedition. Then, we made a walk from the bust to the mast used to anchor the Zeppelins and we stayed a moment to enjoy the nice scenery of the King's Bay.



Immediately after lunch, we were ready to disembark at the northern side of Kongsfjorden, in a place named Ny London. We had the opportunity to walk around two old buildings, several foundations and the remains of a railway track with old steam boilers and drills. All these remains were built between 1910 and 1913 by a company owned by Ernest Mansfield who had found some marble in the area. We split into three different groups. All visited the historic site and then some of us headed to the highlands of the island, others to a fresh water pond where a couple of Red-throated Divers nested. Two reindeers and a Long-tailed Skua were observed during this middle walk. The weather was very good, with a lot of sunshine and a gentle breeze adding to the impression of being in Arctic summer.



Day 3 – Monday, 13. August 2018

Hinlopen Strait: Alkefjellet & Torellneset

0800 GPS Position: 79° 40.0' N, 018° 25.1' E

Wind: SW 3 **Sea state:** slight **Weather:** overcast **Temperature:** 5°C

In the morning we were heading south into Hinlopenstretet looking for the famous birdcliff of Alkefjellet. Lucas, one of the guides, spoke of “the Manhattan of the birds”, and that’s what it is indeed! There are several thousands of Brünnich’s guillemots breeding on this cliff. It is also a very scenic place and special from a geological point of view. We enjoyed these towers of rock, and guillemots were diving into the water around us. Some foxes were also trying to catch chicks or guillemot eggs... It was a very special feeling finding all this life in such a remote place!



The day continued after lunch with more exciting scenery. We arrived around three o'clock at Torellneset where a colony of walrus were waiting for us. Walrus can quickly get frightened and we needed to be careful not to scare them. In this case we were lucky because these ones were curious and playful, and a rare sight even for many of the guides. It was an amazing moment being ashore observing several walrus playing in the water and coming so close to us! At some point we had the impression of being observed rather than observing them. After coming back to the ship, we assisted to the traditional recap which today was dedicated to the Brünnich's guillemot and presented by Fritz.



Day 4 – Tuesday, 14. August 2018

Nordaustlandet: Reliktbukta & Karl XII-øya

0800 GPS Position: 80° 26.5' N, 023° 27.8' E

Wind: NW 1 **Sea state:** slight **Weather:** partly cloudy **Temperature:** 5°C

After a calm night, we woke up as *Plancius* entered Duvefjorden on the north side of Nordaustlandet. We landed in a small bay named Reliktbukta, sheltered from the swell coming from the Arctic Ocean. This place rarely gets visitors and it is a perfect example of polar desert.

We divided into three groups, the more energetic ones went on a steep faster climb to the top of Kvinberget. At 365 m elevation the fog finally rose and they could enjoy fantastic views of the surrounding landscape. The medium group had a walk on the raised beaches, discovering various formations of rocks. Stone circles or polygons, and ice wedges were appearing from a succession of frost and thawing, lying on a base of permafrost that never thaws. The leisurely group went on a short zodiac cruise, going further in to the internal part of the bay along the shore to see a Kittiwake colony. There were also several Kittiwakes around the landing area, feeding on small fish in shallow water. Suddenly the sky cleared and we ended the landing with some blue sky and a wonderful light.

After a quiet nap, Christian announced our arrival at the island Karl XII. Despite the calm wind conditions, strong currents and some swell made it more challenging to board the zodiacs. Then we slowly approached Karl XII-øya. The northern part of the island is a steep rock tower with some birds nesting on the cliffside with little to no vegetation. Our guides looked for polar bears and rapidly spotted three of them lying down on the gentle slopes at the foot of the main cliff. As it was difficult to get a good view of them, we continued around the island. Another bear was spotted uphill, as well to far from the shore to get a good view of it. Finally, up front Christian found one bear standing up close to the shoreline and visible for everyone to see. We stayed here a while, watching this big male walking slowly around and finally sitting down to rest. We returned to *Plancius* where our Hotel Manager, Zsuzsanna, was ready to welcome us with a delicious dinner.



Day 5 – Wednesday, 15. August 2018

In the pack ice north of Nordaustlandet

0800 GPS Position: 82° 28.0' N, 021° 12.6' E

Wind: W 2 Sea state: calm Weather: calm Temperature: 3°C

While we were comfortably asleep in our beds, *Plancius* made her way to the higher latitudes – and covered quite a distance during the night! The ice edge was our destination of the day, and under the prevailing conditions, this journey required the united power of all three generators. Finally, during the early morning hours and well past 82 degrees latitude the pack ice presented itself in all its beauty. Scattered floes of various sizes and shapes eventually formed a thicker maze as our Captain carefully manoeuvred deeper into this frozen



world in different shades of grey, blue, green and white. Yesterday's swell had calmed down to a soft breathing motion barely noticeable for us as we stood on the outside decks searching the world around us for its true King: the polar bear.

A true royal, he showed no attempt of rushing the encounter. Morning passed, lunch was called, and still we were left to admire the kittiwakes, fulmars and ivory gulls circling around us, eager to check out the polar cod and other fish now exposed due the ship's path through the ice. Everyone got a good view on numerous seals as well, mainly harp seals and enormous bearded seals resting on the ice or swimming between the floes. However, there could hardly be any doubt as to this being polar bear kingdom. Several times we spotted his footprints on the ice, even the remains of what might have been breakfast.

Decreasing visibility due to incoming fog added to the tension we could sense. Our guides and the bridge team stood with their scopes and binoculars, as did we. Clearly, being of yellowish white colour made the perfect camouflage in these conditions. Then, suddenly there he was! Materializing almost out of nothing, right in front of us a huge male became visible in the fog. The Captain stopped the engine as we tiptoed forward to get a better view on this wonderful creature. To start with, also the bear showed a slight interest in us, approaching the ship slowly, tasting the air to determine what suddenly had crossed his path. After a while his curiosity seemed satisfied and he turned away again, slowly, yet determined, until the fog closed up behind him.

Amazed, we continued our journey, still checking the surroundings for yellowish white shapes as we moved. Quite obviously, our appearance had interrupted the bear's lunch, as the remains of what

seemed to once have been a bearded seal became visible on an ice floe. Ivory gulls were enjoying the leftovers, and – yes! There was another bear, only a stone’s throw away from the carcass. Our arrival must have surprised him as much as his appearance did surprise us, he seemed a bit confused as he rose to his feet and decided to reward us for interrupting his sleep with polite ignorance, walking away, eventually jumping into the water and heading for the ice on the far side.

Overjoyed and excited we continued our bear watch throughout the afternoon until *Plancius* eventually reached open water and set course for tomorrow’s destination. No more bears for now, but we had seen them in their true surroundings. Here they were much harder to find than on green grassy slopes! After a whole day scouting from the outer decks and the bridge, we had definitely earned our dinner today!



Day 6 – Thursday, 16. August 2018

Storøya & Austfonna

0800 GPS Position: 80°13.7' N / 027°52.7' E

Wind: N 1 **Sea state:** calm **Weather:** overcast **Temperature:** 4°C

We arrived near Storøya (the Big Island) while having our breakfast. Christian announced the program for the morning: a zodiac cruise along the North tip of this island in search for polar bears.

Reaching closer to land in our zodiacs, we discovered a small group of female walrus resting on a rock. And suddenly, behind the walrus, we also spotted a polar bear walking along the shore line, right next to another group of walrus. We quietly approached the beach and admired the sight of it, now slowly walking away from the walrus. It seemed calm and not disturbed by our presence. After a while we left it in peace and continued our cruise into the next bay where we spotted two polar bears lying down a bit away from the shoreline. As we were coming back towards *Plancius*, the first bear had moved to a rock by the waterline lying down facing the sea. We got a good view moving closer to him, at one point almost getting the feeling of being face to face with him.



During the afternoon, a long journey of sailing awaited us to reach our next destination: the glacier front of Austfonna. Julia gave a lecture about polar night and day, with a superb slide show of the light there is in Svalbard during winter and spring. Later on, Gérard did a talk on Polar Bears, illustrated by his photos taken during previous expedition cruises.

After dinner, we finally arrived in front of the largest ice cap after Antarctica and Greenland: Austfonna with an active glacier front of 25 km width. Captain Alexey manoeuvred the ship slowly at a safe distance to the glacial front. The fog gave an atmosphere of mystery. A big calving lasting for more than a minute happened soon after we arrived. We were astonished by all the different colours of blue of the icebergs.

After several hours of amazing navigation in the ice-clogged waters, Captain changed course in order to reach our next destination in time for tomorrow.



Day 7 – Friday, 17. August 2018

Freemansundet & Storfjorden

0800 GPS Position: 78°12.0' N / 021°52.0' E

Wind: NW 3 **Sea state:** calm **Weather:** overcast **Temperature:** 6°C

New day, new scenery, new environment...

After the amazing ship cruise along the Austfonna glacier yesterday evening, we now discovered a completely green landscape in Freemansundet. It was time to experience a beautiful tundra hike and to discover some arctic flowers around Isbjørnøden on Edgeøya. Birders could also enjoy and observe species such as Pink-footed Goose, Purple Sandpiper and Snow Bunting. As usual, we were spread into three different hiking levels: fast, middle, and leisurely. We could enjoy walking in this lush



tundra vegetized due to a large quantity of sediments deposited by an important river delta. A very different environment from the last hike we experienced in the polar desert of Reliktbukta!

After lunch time we headed south to Kapp Lee. The zodiac drivers did their best in keeping us dry as wind and waves made our shuttle to the landing site a bit more challenging than usual. Safely landed on shore we got to freely move around within a perimeter of the guides scouting. We soon discovered three interesting sights; some Pomor culture remains, a little group of walrus relaxing on the beach, and further into the tundra landscape we had a good view of some reindeers peacefully grazing despite our presence.

At the landing area some of us were also lucky to observe some of the walrus approaching along the beach close to the zodiacs. Nice scenery, cooperative wildlife, even in this middle-arctic tundra, there is always something to discover!



Day 8 – Saturday, 18. August 2018

Hornsund: Burgerbukta, Brepollen & Samarinvågen

0800 GPS Position: 76° 56.0' N, 015° 33.6' E

Wind: calm **Sea state:** slight **Weather:** rain **Temperature:** 2°C

Despite waking up to rain and fog, most of us were adventurous enough to attend a zodiac cruise into the western arm of Burgerbukta in Hornsund. As we slowly moved into the fjord we were admiring the majestic landscape and steep mountains surrounding it. Iron-containing water was running down the steep mountains making them look like they were bleeding. The drivers had to take care manoeuvring around the icebergs and small pieces of ice floating around. We were astonished by all the different colours of blue in the icebergs, revealing the original layers of snow being packed in ice over thousands of years. The sea here, close to the glacier, had a milky colour due to sediments suspended in the water.

With rain continuing throughout the afternoon, it was nice to stay on board *Plancius* for a ship's cruise in the bay Brepollen where we could enjoy the sight of the glacier Storbreen. In Norwegian, pol is a small bay, and originally that is what it was, but today it is a very large bay of more than 100 km² due to the rapid glacial retreat of the 20th and 21st century. Sandra gave a lecture about hunting and trapping in Svalbard during the last centuries and told the story about the famous female Austrian overwinterer, Christiane Ritter, who accompanied her husband for one winter in a small cabin in North Spitzbergen. For dinner, Chef Ralf prepared a special surprise: a barbecue. As the weather was not the best for an outside barbecue, the dinner was served inside the restaurant with free drinks.



Day 9 – Sunday, 19. August 2018

Bellsund: Bamsebu & Recherchebreen

0800 GPS Position: 77° 37.8' N, 014° 35.5' E

Wind: calm **Sea state:** slight **Weather:** fog patches **Temperature:** 8°C

After a night of rocking with the swell, we woke up to a calm sea and mist hugging the mountains surrounding us. We were shuttled with the zodiacs ashore to visit Bamsebu, “home of the Teddy bear” in Norwegian. Now a private cabin, originally it was used as a hunting and trapping hut. Remains of this gloomy chapter of history were visible as piles of bones and skulls of numerous beluga whales spread out along the beach. Sandra was taking us through some of the brutal activity taking place on this beach in the 1930s. Several rowing boats used in this time are still lying upside down on the beach along the Ahlstrandhalvøya. We were careful not to touch any of the remains of the beluga whales as they are cultural remains and protected.



Along the beach we also noticed some small camouflaged birds, purple sandpipers, hardly disturbed by our presence as we walked past them. The birdlife in this area is relatively rich, and further into shore covered in vegetation we discovered some arctic skua with some chicks. In the end of our historic walk we came across a dead polar bear adding up to today's experience of nature's thin line between life and death.

Back on *Plancius* for our lunch the rain stopped, and the clouds opened up for the sun to shine through as we made our way into the Recherche fjord with beautiful surroundings of pointy mountains and ridges. The glacier Recherchebreen is separated from the fjord by a lagoon and a beach where we would make a landing. With sunshine in our faces we strolled around the stony beach taking in the stunning landscape and the glacier. And if this scenery wasn't enough for today, suddenly, several beluga whales or white



whales were approaching close to shore making a show before they disappeared in the distance. Seeing these amazing white creatures swimming in this milky blue water, in their true element of the sea, put the history of the morning walk into perspective.

This beautiful afternoon was ended with a proper “polar plunge”, a refreshing swim in arctic water, completing this incredible trip around Svalbard.



Day 10 – Monday, 20. August 2018

Disembarkation in Longyearbyen

GPS-Position at 08.00 am: 78°13.7' N, 015°36.1' E

After 9 days we were back from where we had started, Longyearbyen. It was sad to say good bye to all the beautiful places we had visited and to disembark Plancius, the ship that had been our comfortable, cosy home for an unforgettable journey to the North.

But at the same time, we were richer in memories and knowledge about the Arctic and its wildlife. We have had special and incredible experiences, taken hundreds of pictures and made new friends. We shared truly unique moments, we talked and we laughed with each other. This trip will last us a lifetime – in our memories, in our imaginations, and in our dreams.



*Thank you all for such a wonderful voyage, for your company,
good humour and enthusiasm. We hope to see you again in the future,
wherever that might be!*

Total distance sailed on our voyage:

1470 Nautical miles

2722 Kilometres

Most northerly point reached:

82° 35.8' N, 024° 18.7 'E

**On behalf of Oceanwide Expeditions, Captain Alexey Nazarov, Expedition Leader
Christian Engelke, Hotel Manager Zsuzsanna Varga and all the crew and staff, it has
been a pleasure travelling with you.**





Birds and Mammals of Svalbard PLA13-18

English Name	Latin	German	French	Dutch	Breeding / Transient / Vagrant
Great Northern Diver	<i>Gavia immer</i>	Eistaucher	Plongeon Imbrin	Ijsduiker	V
Red-throated diver	<i>Gavia stellata</i>	Sterntaucher	Plongeon catmarin	Roodkeel duiker	B
Northern Fulmar	<i>Fulmarus glacialis</i>	Eissturmvogel	Fulmar boréal	Noordse stormvogel	B
Pink-footed Goose	<i>Anser brachyrhynchus</i>	Kurzschnabelgans	Oie à bec court	Kleine rietgans	B
Barnacle Goose	<i>Branta leucopsis</i>	Weisswangengans	Bernache nonnette	Brandgans	B
Brent Goose	<i>Branta bernicla</i>	Ringelgans	Bernache cravant	Rotgans	B
Snow Goose	<i>Chen caerulescens</i>	Schneegans	Oie des neiges	Sneeuwgans	V
Common Eider	<i>Somateria mollissima</i>	Eiderente	Eider commun	Eider eend	B
King Eider	<i>Somateria spectabilis</i>	Prachteiderente	Eider à tête grise	Konings eider	B
Long-tailed Duck	<i>Clangula hyemalis</i>	Eisente	Harelde boréale	Ilseend	B
Rock Ptarmigan	<i>Lagopus mutus hyperboreus</i>	Alpenschneehuhn	Lagopède alpin	Sneeuw hoen	B
Ringed Plover	<i>Charadrius hiaticula</i>	Sandregenpfeifer	Grand Gravelot	Bontbek plevier	B
Sanderling	<i>Calidris alba</i>	Sanderling	Bécasseau sanderling	Drieteen strandloper	B
Purple Sandpiper	<i>Calidris maritima</i>	Meerstrandläufer	Bécasseau violet	Paarse strandloper	B
Dunlin	<i>Calidris alpina</i>	Alpenstrandläufer	Bécasseau variable	Bonte strandloper	B
Ruddy Turnstone	<i>Arenaria interpres</i>	Steinwälzer	Tournepierre à collier	Steenloper	B
Grey Phalarope	<i>Phalaropus fulicarius</i>	Thorshühnchen	Phalarope à bec large	Rosse franjepoot	B
Pomarine Skua	<i>Stercorarius pomarinus</i>	Spatelraubmöwe	Labbe pomarin	Middelste jager	T
Arctic Skua	<i>Stercorarius parasiticus</i>	Schmarotzerraubmöwe	Labbe parasite	Kleine jager	B
Long-tailed Skua	<i>Stercorarius longicaudus</i>	Falkenraubmöwe	Labbe à longue queue	Kleinste jager	B
Great Skua	<i>Stercorarius skua</i>	Skua	Grand Labbe	Grote jager	B
Sabine's Gull	<i>Xema sabini</i>	Schwalbenmöwe	Mouette de Sabine	Vorkstaart meeuw	B
Glaucous Gull	<i>Larus hyperboreus</i>	Eismöwe	Goéland bourgmestre	Grote Burgemeester	B
Great black-backed Gull	<i>Larus marinus</i>	Mantelmöwe	Goéland marin	Grote mantelmeeuw	B
Kittiwake	<i>Rissa tridactyla</i>	Dreizehenmöwe	Mouette tridactyle	Drieteenmeeuw	B
Ivory Gull	<i>Pagophila eburnea</i>	Elfenbeinmöwe	Mouette blanche	Ivoor meeuw	B
Arctic Tern	<i>Sterna paradisaea</i>	Küstenseeschwalbe	Sterne arctique	Noordse stern	B
Common Guillemot	<i>Uria aalge</i>	Trottellumme	Guillemot de Troil	Zeekoet	B
Brunnich's Guillemot	<i>Uria lomvia</i>	Dickschnabellumme	Guillemot de Brünnich	Dikbekzeekoet	B
Black Guillemot	<i>Cephus grylle</i>	Gryllteiste	Guillemot à miroir	Zwarte zeekoet	B
Little Auk	<i>Alle alle</i>	Krabbentaucher	Mergule nain	Kleine alk	B
Atlantic Puffin	<i>Fratercula arctica</i>	Papageitaucher	Macareux moine	Papegaai duiker	B
White Wagtail	<i>Motacilla alba</i>	Bachstelze	Bergeronnette grise	Witte Kwikstaart	V
Snow Bunting	<i>Plectrophenax nivalis</i>	Schneeammer	Bruant des neiges	Sneeuwgors	B

MAMMALS

English	Latin	German	French	Dutch	Breeding / Transient / Vagrant
Walrus	<i>Odobenus rosmarus</i>	Walross	Morse	Walrus	B
Bearded seal	<i>Erignathus barbatus</i>	Bartrobbe	Phoque barbu	Baardrob	B
Ringed seal	<i>Phoca hispida</i>	Ringelrobbe	Phoque marbré	Ringelrob	B
Harp seal	<i>Pagophilus groenlandicus</i>	Sattelrobbe	Phoque du Groenland	Zadelrob	T
Hooded seal	<i>Cystophora cristata</i>	Klappmütze	Phoque à capuchon	Klapmuts	V
Common /Harbour seal	<i>Phoca vitulina</i>	Seehund	Phoque commun	Gewone zeehond	B
Minke Whale	<i>Balaenoptera acutorostrata</i>	Zwergwal	Petit rorqual	Dwergvinvis	T
Sei Whale	<i>Balaenoptera borealis</i>	Seiwal	Rorqual boréal	Noordse vinvis	V
Blue Whale	<i>Balaenoptera musculus</i>	Blauwal	Baleine bleue	Blauwe vinvis	T
Fin Whale	<i>Balaenoptera physalus</i>	Finnwal	Rorqual commun	Gewone vinvis	T
Humpback Whale	<i>Megaptera novaeangliae</i>	Buckelwal	Baleine à bosse	Bultrug	T
Bowhead whale	<i>Balaena mysticetus</i>	Grönlandwal	Baleine du Groenland	Groenlandse walvis	T
Sperm Whale	<i>Physeter macrocephalus</i>	Pottwal	Cachalot	Potvis	V
Narwhal	<i>Monodon monoceros</i>	Narwal	Narval	Narwal	V
Northern Bottlenose Whale	<i>Hyperoodon ampullatus</i>	Entenwal (Dögling)	Hyperoodon arctique	Butskop	V
Orca (Killer Whale)	<i>Orcinus orca</i>	Schwertwal (Orca)	Orque	Zwaardwalvis	V
White-beaked Dolphin	<i>Lagenorhynchus albirostris</i>	Weisschnauzendelphin	Lagénorhynque à rostre blanc	Witsnuitdolfijn	V
Beluga	<i>Dephinapterus leucas</i>	Weisswal	Béluga	Beloega	B
Polar Bear	<i>Ursus maritimus</i>	Eisbär	Ours blanc	Ijsbeer	B
Arctic Fox	<i>Alopex lagopus</i>	Polarfuchs	Renard polaire	Poolvos	B
Spitsbergen Reindeer	<i>Rangifer tarandus platyrhynchus</i>	Svalbard Rentier	Renne du Spitzberg	Rendier	B

11-Aug	12-Aug	13-Aug	14-Aug	15-Aug	16-Aug	17-Aug	18-Aug	19-Aug
	X				X			X
X	X	X	X	X	X	X	X	X
	X					X	X	X
	X					X		X
X	X	X	X	X		X		X
	X							
	X					X	X	X
X	X		X		X	X	X	X
	X			X				
	X	X	X					X
X	X	X	X	X	X	X	X	X
X	X	X	X	X	X	X	X	X
		X	X					
X	X	X	X	X		X	X	X
	X			X				
X	X		X				X	X
X								
	X					X		X

[illegible]



Ice Service

Forecasting Division for Northern Norway

N-9293 Tromsø, Norway

Tel: +47 90 47 20 48 E-mail: istjenesten@met.no Twitter: @istjenesten

13th August 2018

Valid 15:00 UTC

0 200 400 600 800 1000 km

Ice Categories

10/10ths	Fast Ice	7-9/10ths	Close Drift Ice	1-4/10ths	Very Open Drift Ice
9-10/10ths	Very Close Drift Ice	4-7/10ths	Open Drift Ice	0-1/10ths	Open Water

Projection: Polar Stereographic, True Scale at 90°N, WGS84

Scale: 16,580,902

Map Corners:

UL = 73°10'50.572"N, 83°55'51.534"W

UR = 66°46'32.424"N, 85°38'11.481"E

LR = 53°45'33.028"N, 38°47'58.682"E

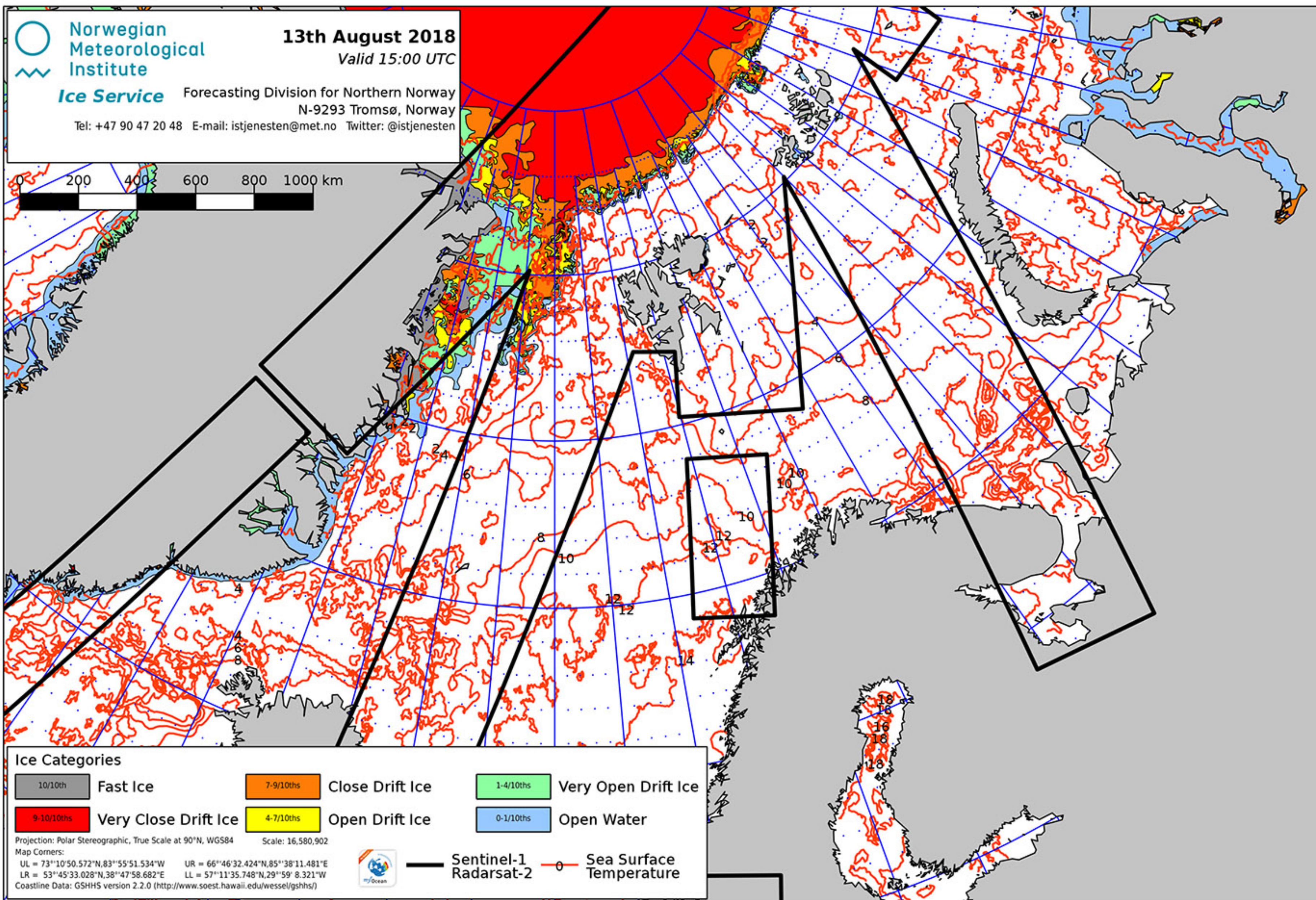
LL = 57°11'35.748"N, 29°59'8.321"W

Coastline Data: GSHHS version 2.2.0 (<http://www.soest.hawaii.edu/wessel/gshhs/>)



— Sentinel-1
— Radarsat-2

○ Sea Surface
Temperature





PHOTOGRAPHY CONTEST 2018

Your chance to win a € 1000 gift voucher for your next polar adventure.

EVERYONE KNOWS A PICTURE IS WORTH A THOUSAND WORDS, BUT DID YOU KNOW THAT YOUR PHOTOS MIGHT NOW ALSO BE WORTH A **€ 1000 GIFT VOUCHER**?

Share your experience!

Did you catch a rare seabird on the fly? Do you have a panorama of the Northern Lights filling the sky? Did you get up close and personal with a penguin? Did you capture a look of awe or wonder on a fellow passenger's face?

If you've been a passenger on any one of our past voyages we want to see your pictures.

You're free to send in as many pictures as you wish. The best pictures are the ones that capture what it's like to take one of our special expeditions to the remote and beautiful ends of the Earth.



PRIZES



€ 1000

GIFT VOUCHER

for Oceanwide Expeditions



€ 500 gift voucher

for Oceanwide Expeditions



€ 250 gift voucher

for Oceanwide Expeditions

UPLOAD YOUR PHOTO AT

WWW.OCEANWIDE-EXPEDITIONS.COM/GALLERY

The size of your photo should be between 2MB and 8MB. Our lucky winners will be contacted by e-mail and Facebook by November 30, 2018. The photography contest runs from April, 30 until October, 30 2018.

Read the terms and conditions of the contest on www.oceanwide-expeditions.com/page/contest-terms



Kayaking the Waters of Antarctica The weather changes so dramatically down here that you simply cannot say, "this looks like a great day" if it is one – rather you must live in the moment and perhaps a more appropriate phrase might be, "this looks like a great moment"! After enduring Force 8 winds on the Beaufort Wind Scale the Ortelius (our home during this Antarctica cruise) pulled into calm waters at Georges Point affording us our first close look at the breathtaking scenery (icebergs, glaciers and mountainous

TRAVEL WRITING COMPETITION 2018

Your chance to win a € 1000 gift voucher for your next polar adventure.

FANCY YOURSELF AS A TRAVEL WRITER? ENTER OUR ANNUAL TRAVEL WRITING COMPETITION AND YOU JUST MIGHT WIN YOURSELF A **€ 1000 GIFT VOUCHER** FOR YOUR NEXT POLAR ADVENTURE.

Write about your experience!

What was it like to camp out under the Antarctic sky? Was it scary when you encountered a polar bear? Was this your first cruise and were you nervous about crossing open waters?

After all, how your expedition made you feel is what you're going to carry with you for the rest of your life. If you share your experience you just might win yourself a € 1000 gift voucher for your next polar adventure.

Here's what you need to do:

1. Write a post (600 – 1200 words) in Dutch, English, or German about what excited you the most on your Oceanwide Expeditions cruise. The topic is entirely up to you.
2. Make sure you add titles and subtitles to the story.
3. Create a hyperlink or two inside of your post. The link could connect to the ship's page, the trip itinerary, the particular destination's page, or perhaps a page related to one of the activities you enjoyed.
4. Add 3 to 5 pictures (they should be 2 MB minimum in size, in landscape format and attached separately when you decide to send your entry to us).
5. Post it online by completing the entry form "Share your story" (<https://oceanwide-expeditions.com/customer-story/create>) **OR** send your post to us at marketing@oceanwide-expeditions.com. Either way, make sure you include your full name and e-mail address.
6. **Spread the word!**



PRIZES



€ 1000

GIFT VOUCHER

for Oceanwide Expeditions



€ 500 gift voucher
for Oceanwide Expeditions



€ 250 gift voucher
for Oceanwide Expeditions



ENTRIES CLOSE OCTOBER 30

Our lucky winners will be contacted by e-mail and Facebook by November 30, 2018

Read the full terms and conditions on oceanwide-expeditions.com/page/contest-terms

Captain Alexey Nazarov

and his international crew of 45

including

Chief Officer:	Svein Rubach	[Norway]
Second Officer:	Romanas Vicas	[Lithuania]
Third Officer:	Mindaugas Oginskas	[Lithuania]
Chief Engineer:	Sebastian Alexandru	[Romania]
Hotel Manager:	Zsuzsanna Varga	[Hungary]
Asst. Hotel Manager:	Gabor Ferencz	[Hungary]
Chef:	Ralf Barthel	[Germany]
Sous Chef:	Ivan Yuriychuk	[Ukraine]
Ship's Physician:	Bruno De Geeter	[Belgium]

and

Expedition Leader:	Christian Engelke	[Germany/Norway]
Asst. Expedition Leader:	Sandra Petrowitz	[Germany]
Expedition Guide:	Fritz Hertel	[Germany]
Expedition Guide:	Gérard Bodineau	[France]
Expedition Guide:	Irene Kastner	[Svalbard]
Expedition Guide:	Julia Wellner	[Germany/Svalbard]
Expedition Guide:	Lucas Humbert	[France]
Expedition Guide:	Johanne Skrefsrud	[Norway]

welcome you on board!



Around Spitsbergen

on board the

Plancius

11th of August, 2018 (Day 1)

Welcome on board!

from 16.00 **Welcome on board!** Your luggage will be delivered to your cabin as soon as possible. Check to make sure you are not missing anything. Feel free to explore around the ship.

TBA First meeting and Welcome Briefing in the Lounge (Deck 5), including a **Mandatory Safety Briefing & Lifeboat Drill**. **All Passengers are required to attend** this very important safety briefing. Please listen for announcements.

ca. 18.00 *Plancius* departs Longyearbyen northbound.

TBA **Introduction to the ship** by your Hotel Team and further information by your Expedition Team in the Lounge (Deck 5).

19.30 **Dinner** is served in the Dining Room located on Deck 3 behind reception. Bon appétit!

TBA = to be announced

Men wanted for hazardous journey, small wages, bitter cold, long months of complete darkness, constant danger, safe return doubtful. Honour and recognition in case of success.

- Sir Ernest Shackleton

Around Spitsbergen

on board the

Plancius

12th of August 2018 (Day 2)

- 07.00** Early **Wake-up call**.
- 07.30 The **Breakfast** buffet is ready for one hour in the Restaurant.
- 08.30** **Mandatory Briefing** in the Lounge: **Polar Bear Safety, Zodiac routine & AECO guidelines** (in English).
- ca. 09.15 After the briefings we would like to hand out your **rubber boots**. We will **call you by decks** and ask you to come to the Boot Room on Deck 3 forward. Please bring your thick socks!
- ca. 10.15** **Landing: Ny-Ålesund**. We visit one of the world's northernmost permanent settlements. The former mining town has been converted into a scientific center of international Arctic research but it's also famous for its polar history. Amundsen, Nobile and Ellsworth started their zeppelin journey here in 1926 to be the first ones to fly over the North Pole. The anchoring mast is still there and can be visited.
- TBA** **Please follow the rules**. Always (!) stay on the gravel roads in order to not damage vegetation, disturb wildlife (especially birds) or interfere with scientific devices which may not be obvious or even visible. Please do not leave the settlement – danger of polar bears! Ny-Ålesund boasts the world's northernmost post office (self-service) and the northernmost souvenir shop (accepted currencies: US\$, €, NOK or credit card).
- 11.30** **We meet at the Amundsen bust** for a walk to the *Norge* anchoring mast and a talk (**in English**) about Amundsen's, Nobile's and Ellsworth's voyage to the North Pole.
- from 12.00** **Zodiac shuttle** to the ship. **Last Zodiac at 12.45!**
- 13.00 For one hour, the **Lunch** buffet is waiting for you!
- 14.15 **Landing: Blomstrandhalvøya**. We intend to land on the north side of Kongsfjord at a derelict mining settlement where Ernest Mansfield, a notorious character in Svalbard's history, mined for marble a century ago. We will stroll through the tundra, and one group can hike up a bit for some great views of Kongsfjord. It's worth in all groups to keep eyes open in search for birdlife and reindeer in the area.
- 18.00 **Recap** of today and **briefing** for tomorrow and the days to come in the **Lounge!**
- 19.00 **Dinner** is served in the Restaurant. Enjoy!

I go exploring because I like it and it's my job. One goes once and then one gets the fever and can't stop going.

Sir Ernest Shackleton

Around Spitsbergen

on board the

Plancius

13th of August 2018 (Day 3)

- 07.45** The day starts with the **wake-up call**.
- 08.00** **Breakfast buffet**
- TBA** **Zodiac Cruise: Alkefjellet.** In the morning we would like to visit a place called Alkefjellet, literally „Auk Mountain“. Several ten thousand pairs of Brünnich's guillemots are nesting on the steep basaltic cliffs which are up to one hundred meters high. In addition, kittiwakes and Glaucous gulls are also present here, and the geology is interesting as well. Our plan is to offer you a Zodiac Cruise along those spectacular cliffs, passing them at close distance to observe the birds. It is a fantastic experience even if you are not a birder! Please dress warmly; we will not go ashore.
- 12.30** **Lunch** is waiting for you.
- afternoon** **Landing.** The **southern part of the Hinlopen Strait** is a good place for walrus as they find food here and can haul out on the gravel beaches of Nordaustlandet. We are hoping to visit the charismatic „toothwalkers“ to observe them on land. To make this happen, the walrus have to be home of course, and the conditions need to be good for a landing.
Please listen for announcements; before we can land to visit the walrus we need to brief you on how we will approach them on land.
- 18.00** Welcome to our **recap**.
- 19.00** Dinnertime, and the livin' is easy ...

*"To allow mystery, which is to say to yourself: there could be more,
there could be things we don't understand; is not to damn knowledge."*

BARRY LOPEZ

Around Spitsbergen

on board the

Plancius

14th of August 2018 (Day 4)

07.45 **Wake-up call** – rise and shine :-)

08.00 **Breakfast buffet**

Landing at Reliktbukta. Welcome to the Arctic Nothing! Reliktbukta in the rarely visited North of Nordaustlandet, is a perfect example for polar desert. It is an impressive – and just superficially empty – landscape, and there is much to see. Happy exploring!

09.15 **Zodiac taxi** for the „mountain goats“

09.30 **Zodiac taxi** for **everyone else** who wants to go ashore

13.00 Lunchtime

afternoon **Zodiac Cruise Karl XII-øya.** Arctic Nothing reloaded: The small island Karl XII at 80° 39' N is Svalbard's last tiny dot on the map south of the North Pole. It is very exposed, and interesting wildlife can be spotted here. If the conditions allow, we would like to invite you for a zodiac cruise.

18.15 Looking back, looking ahead: **Recap** in the Lounge

19.00 Time for **dinner** – bon appetit!

Life is either a daring adventure, or nothing at all.

- HELEN KELLER

Around Spitsbergen

on board the

Plancius

15th of August 2018 (Day 5)

Expedition Day! North of Nordaustlandet – this season: far north of Nordaustlandet – we will encounter the pack ice, a spectacular Arctic Wonderland. The exact time of arrival is depending on our speed during the night. In any case, ice will be the topic of today. Please join us on deck – it is a brilliant experience to manoeuvre close to the edge of the pack ice. We are keeping a lookout for wildlife throughout the day.

If we encounter marine mammals, please **keep noise levels down** (speak quietly; close doors gently) for the best opportunities to remain with the wildlife.

- 07.30** **Wake-up call!** Christian's voice will stop our sleep. (If we do arrive in the ice earlier, you will be woken up earlier.)
- 08.00 The **breakfast** buffet is available for **one hour** in the Dining Room.
- 12.30 The **lunch buffet** is waiting for you in the Dining Room. Enjoy your meal!
- 18.15** **Recap** of today and **Briefing** for tomorrow in the lounge.
- 19.00 **Dinner** is served in the Dining Room.

*One does not discover new parts of the world
without the courage
of leaving all coastlines behind.*

André Gide

Around Spitsbergen

on board the

Plancius

16th of August 2018 (Day 6)

- 07.30** **Wake-up call** – good morning!
- 08.00** The **breakfast buffet** is providing energy for the morning.
- morning **Expedition morning:** We are very dependent of weather and wind conditions in our approach to **Storøya**. This little island northeast of Nordaustlandet is a classic example for slightly mischievous naming: „Storøya“ is literally „Big Island“ while compared to its neighbour it’s actually rather tiny. However, it’s great in another sense: it boasts fantastic landscape with an icecap, and often there’s wildlife around. We will keep you informed about our plans – please listen for announcements.
- 12.30** **Lunch buffet** – another energy boost!
- afternoon **Ship Cruise: Austfonna.** In the south of Nordaustlandet, the island’s huge icecap Austfonna ends in a glacierfront about 200 km long – it’s the longest glacierfront in the northern hemisphere. This is where we will be heading in the afternoon. We will keep you updated about our route – make sure you head out on deck and enjoy the spectacular scenery!
- 18.00** **Recap and outlook** in the Lounge
- 19.00** **Dinner** – bon appetit!

*“This we know, the earth does not belong to man, man belongs to the earth.
All things are connected like the blood which unites us all.
Man did not weave the web of life, he is merely a strand in it.
Whatever he does to the web, he does to himself.”*

Chief Sealth

Around Spitsbergen

on board the

Plancius

17th of August 2018 (Day 7)

Expedition Day in Freemansundet and Storfjorden

Today our plans are very dependent on the weather conditions and the wildlife – just the same like in the ice. It is next to impossible to draft a program beforehand; it is highly likely that we would have to change it time and again. In any case, we will try to maximize our chances for activities, and we will keep you informed via announcements.

07.45 Good morning – this is your **wake-up call!**

08.00 The **breakfast buffet** is waiting for you.

morning **Expedition morning in Freemansundet.** This sound in between the islands of Barentsøya and Edgeøya is a notoriously beary place. In early summer the ice gets stuck here, and when it melts, the bears find themselves stuck on land – keep your eyes peeled for the tell-tale creamy-coloured dots on the mountain slopes. For the same reason it is impossible to predict whether, and if so, where, we might be able to make a landing. We will provide you with updates; please listen for our announcements.

12.30 Hungry? **Lunch buffet** to the rescue!

afternoon **Expedition afternoon in Storfjorden.** The eastern side of Spitsbergen – called Storfjorden, and unlike the small island of Storøya the „Big Fjord“ is big indeed – offers a number of possibilities for activities like a landing or a zodiac cruise. However, we need weather and wildlife to co-operate. Again, we will keep you updated via announcements.

18.00 **Recap** and **outlook** in the Lounge

19.00 **Dinnertime** – enjoy your meal!

*“A large volume of adventures may be grasped within this little span of life,
by him who interests his heart in everything.”*

- LAURENCE STERNE

Around Spitsbergen

on board the

Plancius

18th of August 2018 (Day 8)

Today we will explore the **Hornsund** area. This region, located at the west coast of Spitsbergen, is a very scenic place, well known for its beautiful landscape and spiky mountains. It is often called „Svalbard en miniature“.

07.45 Wake-up call – time to start the day!

08.00 **Breakfast.**

09.15 **Landing: Gåshamna.** We would like to land at Gåshamna (literally: „Goose Bay“). Gåshamna boasts different hiking options, some of which provide great panoramic views. In addition to flora and fauna this place is also of quite some historical significance: English whalers had a land station here in the 17th century, and there are remains of Pomor huts. Weather permitting, the fast hikers might be able to climb up to a viewpoint – but be aware this will include a VERY STEEP and demanding scramble on scree slopes.

12.30 Lunchtime!

afternoon **Zodiac Cruise, Burgerbukta.** Join us on our scenic zodiac tour in Burgerbukta. The landscape of this small branch of Hornsund is stunning, and several glaciers are flowing into Burgerbukta. Please dress warmly!

18.00 **Q and A** in our daily recap and outlook

19.00 A special **Arctic Dinner** is served – bon appétit!

"We are all in the gutter but some of us are looking at the stars."

- Oscar Wilde

Around Spitsbergen

on board the

Plancius

19th of August 2018 (Day 9)

- 07.45** Good morning!
- 08.00 Hungry? **Breakfast** is waiting for you.
- 09.15** **Landing: Bellsund.** Bellsund offers a few possibilities for landings. The exact choice of place is very dependent on the weather conditions – we will keep you posted.
- 12.30 **Lunch**
- 14.00** **Landing: Recherchefjord.** Our last landing of this voyage is going to be a special one. At Recherchefjord we would like to offer you an opportunity to say goodbye to Spitsbergen in your very own way. Enjoy this unique place surrounded by stunning scenery!
- Polar Plunge.** At the end of our landing there will be an opportunity to dip in polar waters. Towels will be provided by us. Happy plunging!
- 17.45** **Captain's Farewell and last official meeting.** Please join us in the Lounge for a toast to our special voyage!
- 18.30 **Dinnertime** – once more: bon appétit! We would like to ask you to put your **rubber boots** in front of your cabin door before attending dinner.
- afterwards **Settling of ship's accounts** – we will call you by deck for the settling of your ship's accounts.

"Difficulties are just things to be overcome"

Sir Ernest Shackleton

Around Spitsbergen

on board the

Plancius

20th of August 2018 (Day 10)

If you are on the 02.30 flight out of Longyearbyen (SK4497): Please put your check-in luggage outside your cabin door by 23.30 latest tonight!

- 23.45** (Short) Wake-up call for everybody on the 02.30 flight.
- 00.15** **Landing I, Longyearbyen:** Please come to the gangway, and please don't forget to return your keycard holders to reception before.
- 00.30** The **bus from the pier to the airport** is leaving. You will find your luggage at the pier. Please take it to the bus yourselves to make sure it's with you.
- 07.30** **Wake-up call** for everybody else.

Before you go for breakfast, please put your check-in luggage outside your cabin door (latest by 07.45).

- 07.45** **Breakfast** in the Dining Room until 08.45.
Please put your check-in luggage outside your cabin door **BEFORE breakfast**.
- 08.45** **Landing II, Longyearbyen:** Please come to the gangway, and please don't forget to return your keycard holders to reception before.
- 09.00** The bus from the pier to the center of Longyearbyen is departing.
Your luggage will be waiting for you at the pier. Please identify it and take it to the luggage truck/trailer yourself in order to make sure it's off the vessel. For those of you staying in Longyearbyen, please take your luggage with you on the bus!
- 11.00** If you are on the **12.40 flight (DY397)**: The **bus** will take you from the center of Longyearbyen (the same place where you were dropped off in the morning) **to the airport**. There you will find your check-in luggage waiting for you in the luggage truck/trailer.
- 13.00** If you are on the **14.45 flight (SK4425)**: The **bus** will take you from the center of Longyearbyen (the same place where you were dropped off in the morning) **to the airport**. There you will find your check-in luggage waiting for you in the luggage truck/trailer.

All things considered there are only two kinds of men in the world; those that stay at home and those that do not, the latter are more interesting.

- Rudyard Kipling

Happy traveling home!