



OCEANWIDE

EXPEDITIONS

Around Spitsbergen

6th July – 15th July 2018

M/V Plancius



MV *Plancius* was named after the Dutch astronomer, cartographer, geologist, and vicar Petrus Plancius (1552-1622). *Plancius* was built in 1976 as an oceanographic research vessel for the Royal Dutch Navy and was named *Hr. Ms. Tydeman*. The ship sailed for the Royal Dutch Navy until June 2004 when she was purchased by Oceanwide Expeditions and completely refitted in 2007, being converted into a 114-passenger expedition vessel. *Plancius* is 89 m (267 feet) long, 14.5 m (43 feet) wide, and has a maximum draft of 5 m. She has an Ice Strength rating of 1D, a top speed of 12+ knots, and three diesel engines each generating 1230 horsepower.



Captain Evgeny Levakov

and his international crew

Including:

Chief Officer:	Artur Iakoviev	[Russia]
2nd Officer:	Romanas Vicas	[Lithuania]
3rd Officer:	Luis Oroceo	[Phillipines]
Chief Engineer:	Sebastian Alexandru	[Romania]
Hotel Manager:	Dejan Nikolic	[Serbia]
Assist. Hotel Manager:	Gabor Ferencz	[Hungary]
Head Chef:	Mario Hribernik	[Austria]
Sous Chef:	Ivan Yuriychuk	[Ukraine]
Ship's Physician:	Edwin van Leeuwen	[Netherlands]
Expedition Leader:	Beau Pruneau	[Canada]
Assist. Expedition Leader:	Katja Riedel	[New Zealand]
Expedition Guide:	Michelle van Dijk	[Spitsbergen]
Expedition Guide:	Tom van Hoof	[Netherlands]
Expedition Guide:	Andreas Alexander	[Germany]
Expedition Guide:	Adam Turner	[UK]
Expedition Guide:	Ben Frederiks	[Netherlands]
Expedition Guide:	Anke Timmerberg	[Germany]

Day 1 – Friday 6th July 2018

Embarkation: Longyearbyen

GPS 08.00 Position: 078°14'N / 015°35'E

Wind: SE 2. **Sea State:** Smooth. **Weather:** Good. **Air Temp:** +11°C. **Sea Temp:** +6°C.

Longyearbyen, at 78° north, is one of the world's most northerly settlements. It was founded as a coal mining settlement but it has developed into a thriving town of around 2,000 residents who live and work here all year round. During the summer months this number swells with the arrival of thousands of visitors on cruise ships.

A few of us had arrived in Longyearbyen a day early and had the opportunity to explore the town and maybe to take a day trip into the surrounding areas. Many of us arrived just this afternoon, and we were met by Tanya and Mike at the airport. We had a few hours to visit and explore the town before making our way to the port to join our ship *Plancius*.

We made our way to the floating pontoon and we were met by Katja and Anke and Adam, who helped us with our luggage and gave us a quick introduction to travelling by Zodiac and a demonstration of how to put on the lifejackets. It was just a short boat ride into Adventfjorden to meet *Plancius*, which was lying at anchor out in the bay. It was an easy ride to the ship and it allowed us to become familiar with the Zodiacs which will be taking us to and from the shore over the coming days.



From the gangway we were shown to Reception where DJ, our Hotel Manager and his assistant Gabor checked us in and we were shown to our cabins by the very welcoming hotel staff. We found our luggage waiting for us outside our rooms. We had some time to familiarise ourselves with our cabin before we were called to the Lounge for the mandatory safety briefing which was given by our 3rd Officer Luis Oroceo. This gave us all the information we needed about safety on board the ship and prepared us for the lifeboat drill that was to follow. We heard the abandon ship alarm and gathered at the muster station, the Lounge, wearing our big orange life jackets, the only time we hope to be wearing them. After the roll call we were taken out to the lifeboats to see where they were located and how we would embark if required.

We then had a chance to explore the ship and to check out the many different viewing areas. Out on deck we found that the *Plancius* had quietly weighed anchor and was cruising out of Isfjord heading northwest, straight into the evening sun, for the start of our Arctic adventure.

We met in the Lounge once again and had a briefing from our Hotel Manager, DJ who explained some of the procedures on board *Plancius*, our home for the week. The hotel staff served us champagne and canapes before we met with our Captain Evgeny Levakov who explained a little bit about our forthcoming trip.

We then had a chance to meet our Expedition Team who will be guiding us during our voyage here on Svalbard. We have an international team on board with a wealth of experience both here in the Arctic and Antarctica. Our Expedition Leader, Beau Pruneau, gave us an outline of our plans for the coming days. The first destination was to be 14 Julibukta, in the north east of Svalbard.



It was then time for dinner, and a chance to meet with our fellow passengers. With 24 hours of daylight many of us enjoyed some time out on deck with some sunshine and a brisk Arctic breeze, we spotted Fulmars, Guillemots, and Kittiwakes. It was a very pleasant evening on board.

Day 2 – Saturday 7th July 2018

14 Julibukta

GPS 08.00 Position: 078°57'N / 012°06'E

Wind: NW 3. **Sea State:** Slight. **Weather:** Overcast.

Air Temp: +3°C. **Sea Temp:** +3°C.



Overnight we had headed north, arriving in amazing sunlight with blue skies showing the spectacular scenery of Spitsbergen as the snow topped mountains rose from the sea to contrast with the sky.

We had our mandatory briefings from Beau; before we could board the zodiacs, we needed the briefing on how to safely travel in them, it was also explained how important it is to help protect the environment of the Arctic and the AECO rules that we must comply with, but also safety surrounding polar bears.

The zodiacs were launched and we split in to two groups for a zodiac cruise to look at the bird life amongst the cliffs and flying past us. We were also able to see some Svalbard Reindeer on the shore and high up on the scree slopes.

In the afternoon we were taken to Ny Alesund by zodiac on a wobbly sea. Michelle and Anke told about the great Norwegian explorer Amundsen. After a stroll around the village, a visit to the museum and the shop we went back to the ship again. During recap Beau told his plans for tomorrow and Ben gave a presentation about his life as a scientist “back in the old days (2013)” in Ny Alesund. After an excellent diner we finished an excellent day of our Arctic exploration voyage.



Day 3 – Sunday 8th July 2018

Bockfjorden (Jotun Quellen)

GPS 08.00 Position: 79°37.800'N / 013°42'.600E

Wind: SE 3 **Sea State:** Slight **Weather:** Cloudy **Air Temp:** +8°C. **Sea Temp:** +5°C.

The day began with a wake up call from our Expedition Leader, Beau on this beautiful Sunday morning as we passed the Rentierflya (reindeer plain) on our starboard side as we headed towards Worsleyneset.

It was possible to notice that outside the ship gusts of wind were quite strong and the seastate was getting worse as we neared our site of interest. Due to the wind and waves it was unfortunately necessary to relocate our morning landing to another but yet challenging site, the hot springs of Spitsbergen! This meant the Plancius was forced to head deeper into Bockfjorden, providing an excellent sight of the old red Devonian mountainslopes on portside as we enjoyed breakfast. As our captain dropped anchor we could already see the golden yellow terrace of coarse sand where hot water used to seep out of the earth's core, resulting in the sedimentation of this strange yellow coloured gravel.

The landing site proved to be much more difficult, compared to the nicely paved roads of Ny-Alesund the day earlier. Big rocks and rounded boulders the size of footballs made up most of the landscape. Luckily our guides showed the easiest way towards the hot springs, where we could enjoy the view of the entire fjord.

The fast group went all the way up a steep hill to be rewarded with a view of the neighbouring glacier. The middle group had an interesting 'speed course' on the survival tactics of Spitsbergen's plants and flowers by Michelle and the leisurely group were with Tom, Anke and Adam.

As we headed back to the Plancius, the seastate got even worse than it had been this morning. Waves up to two meters high made the powerful zodiacs turn into spots of foam as the waves crashed aboard as our drivers kept us as dry as possible.

During lunch, Plancius headed towards another landing site called Musshamna, as usual the expedition team would set foot ashore to ensure the area was bear free. Unfortunately the seastate was still severe, the combination of hard wind gusts and a shallow bay created waves that made it unable to board the zodiacs safely. Luckily our expedition leader had a plan B, ship cruising Moffen Island, famous for its numerous walrus laying on the beach.



As we headed to Mofen there was reason for celebration! We crossed the 80° North line of latitude, a great milestone in our expedition and more than enough reason for a nice glass of prosecco in the lounge provided by DJ, Charlotte and Gabor.

After Beau informed us about our destination of tomorrow: One of the seven islands (which are actually 9 in total), we got a very interesting insight in the creation of Spitsbergen by Tom. After that, Katja showed us some scenic pictures of Bockfjored as she skied the area during spring, tranquillic pictures and a great story. It was now time to enjoy dinner, drinks and some sleep.

Day 4 – Monday 9th July 2018

Phippsøya and the ice edge

GPS 08.00 Position: 079°06'N / 019°59'E

Wind: SW 3 **Sea State:** Smooth **Weather:** Cloudy **Air Temp:** +4°C. **Sea Temp:** +3°C.

After a calm night at sea, we arrived at Sjuøyane (Seven Islands) in the morning.

Our plan A for this morning was to land in Isflakbukta, a sheltered bay of Phippsøya.

Phippsøya is the largest island (26 km²) of the seven islands, and named after John Phipps, who was the first person to describe the Polar bear and Ivory Gull.

It is not often that you can land in Isflakbukta (Ice floe bay), as it is often blocked by ice or there is too much swell coming in. Today, it was free of ice and the swell was not too much, so the staff took the rifles and shore bags, and set off to the landing site. It was quite a long ride and once they arrived they found a bear sleeping next to it, so the landing was called off immediately.

But there is always a plan B. Expedition leader Beau called the bridge for some more Zodiacs for a cruise to the bear and enjoy it from a safe position.

All guests were divided into two groups. The first group set off and had a good view of the sleeping bear, which was most likely taking a nap to digest. All of a sudden three walrus looked out of the water, playing around in the distance near the beach. They seemed curious and came closer to check out what we were. Beau instantly communicated with dive master Michael, as the divers were in the water outside of the bay. But the walrus were not interested in us nor them and swum away.

By the time the second group came into the bay, the walrus had disappeared, but the Polar bear was awake. It was feeding on a whale carcass, that had washed up onto the shore. What a great experience, we were so lucky.

After we left Phippsøya, we headed for the ice. The latest ice chart showed that the pack ice had come down a bit, so it was worth a try. During the sail up, some lectures were offered.

At 3 PM Michelle offered her plant talk in German, and Andreas his geology lecture in English.



At 5 PM Katja & Anke offered a lecture about Polar bears, but this had to be postponed a bit, as shortly before we had reached the first drift ice. It was only a small patch, and after we had left it, Katja told us about Polar bears; why Polar bears can stand the cold, that they live a life of feast and famine, their stomach can hold 20% of their body mass, and that they can eat up 10% of their body weight in 30 minutes. The reproduction cycle of this majestic animal is very impressive. They mate in spring but have a delayed implantation. Polar bears wait until September before they get pregnant, and only then if they are fat enough. After four months, the cubs are born only the size of a guinea pig; helpless, blind and deaf. Thanks to the fat rich milk they get from their mother, they can leave the den end of March.

Around 6 PM we reached the pack ice, and while we had a good view of it, Beau explained the plans for the next day, Adam told us about John Phipps, and Ben talked about feces. The day ended in the ice, and while the sun was still shining and it wasn't cold at all, it was hard to go to bed.



Day 5 – Tuesday 10th June 2018

Pack Ice

GPS 08.00 Position: 081°55'.700N / 021°39'.000E

Wind: S 3-4 **Sea State:** Smooth **Weather:** Overcast **Air Temp:** +3°C. **Sea Temp:** 0°C.

Well what a day we had! The expedition team began scouting for bears in the early hours of the day and the perseverance paid off when a bear was sighted at breakfast time. It is fair to say that extensive words in this log will not describe the encounters that were had of all the bears so here are some pictures of each one with the time they were sighted.

Bear 1, male. 0821 hours (Photo: Tanja Bayer)



Bear 2, male. 0853- 0958 hours.



Bear 3. 1324 hours.



Bear 4. 1324 hours.

No picture, pixel bear in fog!

Bear 5. 1440-1530 hours.



At the re-cap Katja explained about the bears we had seen and how we can see what sex they are and Beau spoke about the last bear that we had seen and his age, condition and other identifying features that we saw.

We all owe a big thank you to the Captain for safely navigating through the ice so we could see the bears as well Deck team and the Engineering department.

Day 6 – Wednesday 11th July 2018

Alkefjellet and Torellneset

GPS 08.00 Position: 079° 38'. 300N / 018°28'.100E

Wind: Light air **Sea State:** Calm. **Weather:** Clear. **Air Temp:** +7°C. **Sea Temp:** +4°C.

The morning started with our wake up cal followed by breakfast as the ship sailed in glorious conditions that gave us as spectacular view of the cliffs that we would soon be cruising by.

We arrived with the excellent weather at the birdcliffs named Alkefjellet. This is a medium sized colony of Brunich's Guillemots with estimated numbers around 60,000 individuals. We cruised the cliffs in zodiacs and managed to get really close to the birds. We witnessed thousands of Guillemots flying over the boats, sometimes dropping something. We saw them fight for food and dive underwater. On the less steep areas of the birdcliff we encountered an Arctic fox who was devouring an unfortunate Guillemot.



After lunch we sailed on to Torellneset where we were planning a short walk to see the Walrus colony from nearby. Because a previous expedition ship had scouted a bear nearby, the expedition team took some extra time to scout the area. Again we were lucky, the bear was gone. After a short zodiac trip to the gravel-beach of Torellneset we walked in a line to the walrus-colony and slowly spread out so the Walrus could get used to our presence. The wind came from the right direction so we did not witness the incredible stench of all the burping and farting which was the result of enormous amounts of mussels and clams one Walrus eats a day. After this wonderful afternoon with these majestic animals, we headed back to the ship where Beau closed the day of with his plans for tomorrow and Anke and Ben told us something about respectively Guillemots and Walrus.



Day 7 – Thursday 12th July 2018

GPS 08.00 Position: 078°12'.900N / 021°35'.600E

Wind: SW 8 **Sea State:** High **Weather:** Overcast **Air Temp:** +6°C. **Sea Temp:** +2°C.

Good morning, Good morning, it is Thursday the 12th of July.

It is 6°C and we have 25 knots of wind....

Mm mm.... 25 Knots of wind... That did not sound very promising for our morning program, looking out of our portholes we could tell that we could not expect much today weather wise.

The landing at Kapp Waldburg had be cancelled as it was not safe to launch the zodiacs or use them as the wind was gusting up to 55 knots.

But there is always a plan B.

At 10.00 AM, Adam was scheduled for a lecture about Benjamin Leigh Smith. But plan B, became Plan C as 15 minutes at

forehand, there were two Polar Bears sighted, while we sailed through Freemansundet, on the slope of a mountain called Seelisberg.

One bear was very visible, at 1300 meters distance, but the other went up and disappeared in the low hanging cloud, a little lower on the slope we a few reindeer grazing.

When we heard that this distance of bear is the best they get at some trips, we realized how lucky we are with our bear in the pack ice that was so close most lenses were too big and the best option was a mobile phone camera.



The lecture was re-scheduled and a short time later we were listening to Adam, we learned a lot about the explorer Benjamin Leigh Smith and his dog named Bob. He was born in March 1828 in a rich family and was a cousin of Florence Nightingale.

Inspired by the travel stories of Lamont, Kane & Dufferin, he decided to go to the Arctic himself.

In 1871, he reached 81°25'N, named 33 new places, 22 islands & took 7 oceanographic warm deep-water records. In the following years, he traveled to Jan Mayen, Spitsbergen & Franz Josef Land to do some more research. But everything he did, he did for his own sake. Because of that, and the fact that nobody died on his expeditions, made him an unknown Polar explorer.



The later landing was planned at Kapp Lee, but the clouds were so low that we could not even see it, while passing by.

Another plan was put in to action and this time it was the turn of Tom to give a lecture and to teach us something about climate change.

He first explained that although the Ice age is over, we still live in an Ice house climate, as there is still ice on the Poles and that this had not always been the case, there were also times that our planet had a Hot house climate and trees were growing on Spitsbergen, although it was situated further North.

In those times, the Arctic ocean was an Arctic lake surrounded by Cypress forests.

He also explained that the changes of the temperatures are caused by many factors with a complicated feedback mechanism.

We had our usual recap with the plans for tomorrow by Beau, Kittiwakes by Anke, Arctix Foxes by Adam and the story of Ewald Schmutzler.

Day 8 – Tuesday 13th June 2018

Burgerbukta and Gashamna

GPS 08.00 Position: 077°02'.700N / 015°58'.700E

Wind: S 3 **Sea State:** Calm **Weather:** Overcast **Air Temp:** +5°C. **Sea Temp:** +4°C.

Time to wake up! Our morning wake-up was made by Beau, shortly followed by DJ calling us to breakfast, a beautiful meal from the restaurant team and DJ to start the day.

The weather did nothing to encourage us to get outside, grey clouds and fog engulfed house high icebergs floating around in the water. But, we were in Hornsund today! One of the most beautiful places on Spitsbergen.

The fjord system was once covered by one giant glacier. In the last 100 years the icy giant retreated further and further, creating several adjacent fjords and separate glaciers at the end.

This morning we would visit Burgerbukta East on a zodiac cruise, before we got near the large glacier, we had to circumnavigate some massive icebergs.

While taking a closer look we could see kittiwakes having a rest on the perfectly blue shaped pieces of ice. Together with some rays of watery sun it provided a beautiful scenery for some high Arctic pictures. As we neared the glacier front we could see a large flock of kittiwakes actively following one certain point, it could only be that there was something interesting out there.

And there it was! A pod of around 12 belugas showed up, making way near the shoreline. Not only the white adults but also the grey and even darker grey juveniles could be spotted. Absolutely great to see these normally very shy animals.

The kittiwakes were following the belugas out of the fjord at a fast pace. Time for us to head further into the fjord, towards the glacier! And lucky we were, the glacier front calved some huge pieces of ice, echoing a thunder throughout the fjord followed by a large wave. Luckily, we were at a safe distance from the glacier, but close enough to experience the power of a calving glacier.

After boarding the Plancius we were treated to a nice cup of hot Choco milk, a great thing to warm up with.

After lunch we had a landing at Gåshamna a beautiful stony bay with remnants of the old whaling days. Whale oven foundations and Greenland whale bones laid all around, surrounded by a particular type of moss that only grows there due to the nutrients provided by the whale bones, and that after 400 years!

The long hikers evolved into some sort of mountain creatures while ascending the steep mountain bordering the bay, an amazing view was the reward at the end of the hike. The middle group explored the moraines and the beach crawlers achieved their own mountain high at a slightly lower point. All in all, a lovely landing.

Back onboard we were surprised by the smell of charcoal and meat, the BBQ was fired up and we had a great evening at the back deck of the Plancius after we had been to re-cap in the lounge.

Day 9 – Wednesday 14th July 2018

Bamsebu

GPS 08.00 Position: 077°33'. 200N / 015°05'.000E

Wind: SE 4 **Sea State:** Slight **Weather:** Overcast **Air Temp:** +5°C. **Sea Temp:** +3°C.

We woke with the usual call from Beau followed by DJ calling us to breakfast.

The Expedition team went ashore and set up a perimeter for this morning's landing.

This gave us the chance to explore a nice area which had several historical artefacts that were very well preserved. The hut near to the landing site was named Bamsebu by members of the Norwegian Polar Institute and means 'Bear Hut'. Near to the hut we could see an upturned boat that had been once used as a shelter; stone walls had been built up to the gunwales and remains of a cooker were inside. Entire Beluga skeletons could be seen which were a remnant of the white whale fishery that existed along these beaches and in the nearby bay where the remains of a wooden winch can be seen that was once used for raising a net across the bay after Beluga had entered and it prevented them from escaping their impending slaughter.

The remains of a heavily built boat could be seen further along the beach and this old motor boat was now forming part of the landscape as the artefacts and scenery tell a story of Svalbard's past.

A large variety of flowers ranging from Moss Campion to Scurvy Grass could be seen growing as well as sightings of Eider ducklings and their mothers and Purple Sandpipers and their chicks, Glaucous Gulls and Skuas could also be seen.

The remains of a polar bear were also visible; It is thought that the bear was about 2 (male) or 3 (female) years old, the immense size of the paws of this young bear makes one truly appreciate how large the bears were that we had seen previously.

Unfortunately, we had to cancel our afternoon landing owing to the fog.

We enjoyed a farewell cocktail with the Captain in the lounge which was followed by dinner.



Total distance sailed on our voyage:

Nautical miles: 1201.88 nm

Kilometres: 2163 km



***On behalf of everyone on board
we thank you for travelling with us
and wish you a safe journey home.***

Plancius 08 Dive Log 6th july to 15th july 2018



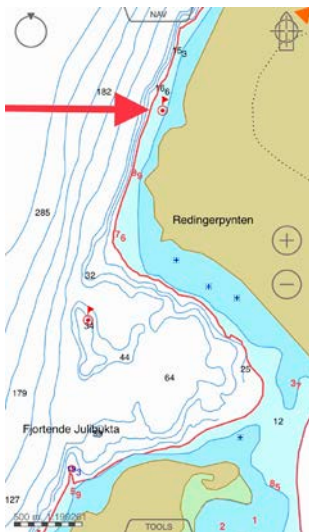
Svalbard Norwegian Arctic

Dive Team: Dive Team Leader Michael Green, Diveguide Tanja Bayer, Diveguide Johan Peterson, Diveguide Mike Pumm.

Divers: Alison, Angelica, Bernd, Britta, Daniel, Dorota, Eugeniusz, Gill, Heike, Igor, Ivo, Joke, Kiki, Loïc, Nick, Ortwin, Roland, Romy, Susan, Uwe, Wolfgang.

After getting onboard of MV Plancius we tried to find our way around the ship and explored the different decks. After the mandatory safety briefing we were on our way to circumnavigate Spitzbergen. After several other briefings and the dive briefing we sorted out the weights. After a long day we were tired but ready to start our dive adventure.

7th july 2018



Dive1 : Redingerpynten/ Fjortende Julbukta - 79°08.511'N / 011°48.918'E

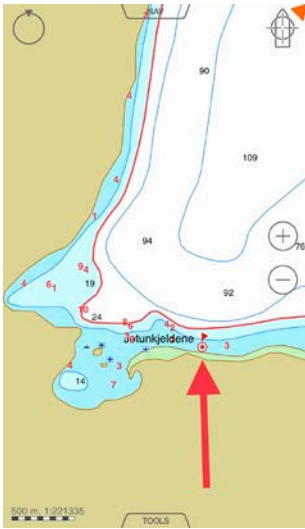
Vor the first time we started our diving operations and everybody was well prepared. We sorted out the groups and buddy teams, packed the Zodiacs and off we went, boarding the divers from the gangway. To get out of the milky melt water of the glacier 14th of july, we went around the corner at the bird cliffs, looking for a shallow area to do our check dive.

The visibility was not so good, but it was good enough to check equipment, weights, buoyancy and the whole set-up. Kameras also were checked and the first pictures were taken.

Nudibranches were seen on the bottom along with lump sucker anemones, sea angels, comb jellies, skeleton shrimp and scallops. After the dive there was enough time for a zodiac cruise along the bird cliff and the glacier. At the bird cliffs we saw Puffins, Glaucous Gulls, Barnacle Goose and Kittiwake everywhere. The first reindeers we spotted right below the cliffs. After a short ride along the glacier we

returned to the ship. Now the adventure can start!

8th July 2018



**Dive 2 : Jotunkjeldene / Bockfjord -
79°27.527'N / 013° 15.292' E**

Our plan B for this day was Bockfjord, a small fjord on the westside of Woodfjord. Here we found the spot Jotunkjeldene, which means giant spring. On the hill you find hot pools which have about 24°C nowadays.



At a gravel beach, just near the base of a small glacier, we started our dive heading east.

Visibility was not too bad and we found some boulders covered with beautiful kelp.

Again we found Shrimps, Crabs and nudibranchs hiding in the kelp. A lot of Sea Angels were around and also comb jellies catching and digesting small fish. We ended the dive after 40 min.

After the dive we did a short landing including a walk along the drift wood on the beach of Jotunkjeldene, looking at the nice Old Red Stone on the

other side.

9th July 2018

**Dive 3 : Isflakbukta / Phippsøya -
80°40.352'N / 020°51.588' E**

In the morning we reached the Seven Islands - Suøyane. We anchored in front of Phippsøya, one of the biggest islands. We headed to Isflakbukta and found a nice rocky wall at the southeastern tip of the bay. The depth was between 12 a 17m. This was our northernmost dive at more than 80 degrees north!



The ground was rocky, so visibility was more than 10m.

Small and big sculpins were hiding between the beautiful kelp around the rocks. Bridle Stars and seastars were found in different colors. The interesting Zooplankton kept some photographer from moving very far.

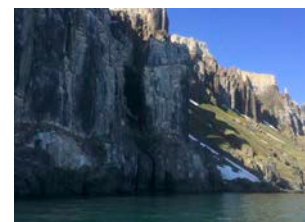
So sorry we had to surface after 40min.

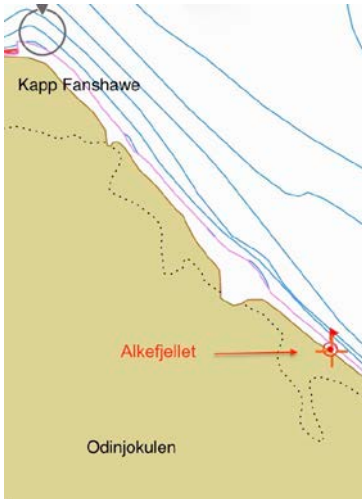
And what a surprise after the dive. We saw our first polar bear just beside the trapper hut in the bay. He was having a meal on a whale carcasse.

With a big smile in our faces we headed north to the pack-ice.

10th July 2018

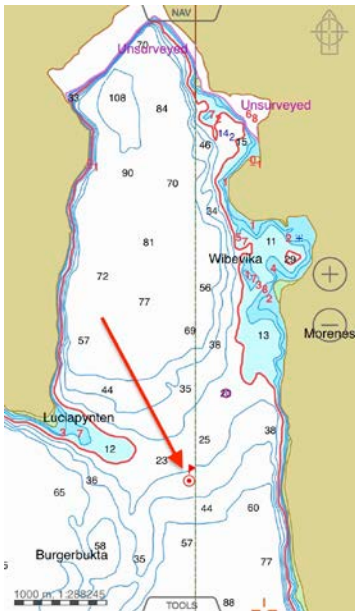
Dive 4 : Alkefjellet / Spitzbergen - 79°34.900'N / 018°29.812' E





After a great expedition day in the pack-ice with a polar bear blocking our ship by laying down in front of the bow, we headed towards the Hinlopen Street. At the eastcoast of Spitzbergen we stopped at the bird cliffs of Alkefjellet. More than 60 000 breeding pairs of the Brunnich´s Guillemot live here. A dive on the bottom of these more than 50m high cliffs seemed to be very interesting. We looked for a nice black water between the meltwater of to glaciers and found a nice place with about 5m visibility. Again the different jellies were really exciting and the shell of an egg was found. Kiki also managed to get a picture of a diving bird! After the dive we went off for a beautiful Zodiac Cruise following the cliffs from south to north. The bird, the geology and the glacier at the end were just fantastic. And despite of engine problems in Michaels Zodiac we all made it safely back to the ship to talk about our great experiences on this beautiful sunny day.

13th July 2018



Dive 5 : Ice / Burgerbukta - 77°02.727'N /015° 59.818' E

On the 12th of July we had a day on the ship, because of too much wind in the Freemansund. After navigating around the southern tip of Spitzbergen we reached Hornsund. In Burgerbukta we looked for a nice piece of ice.



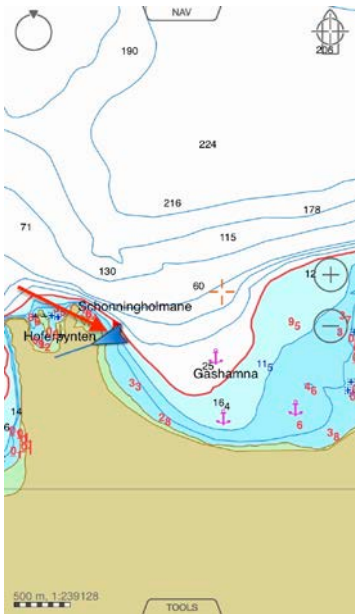
The water was very brown and visibility was nearly zero, but the divers had a lot of fun playing around the ice and taking pictures at the surface. It is just a great feeling to touch an iceberg.

And after that we also climbed an iceberg take a great picture of our 4 Dive teams.

A beautiful zodiac cruise along the glacier and through the blocks of ice ended this great adventure.

13th July 2018

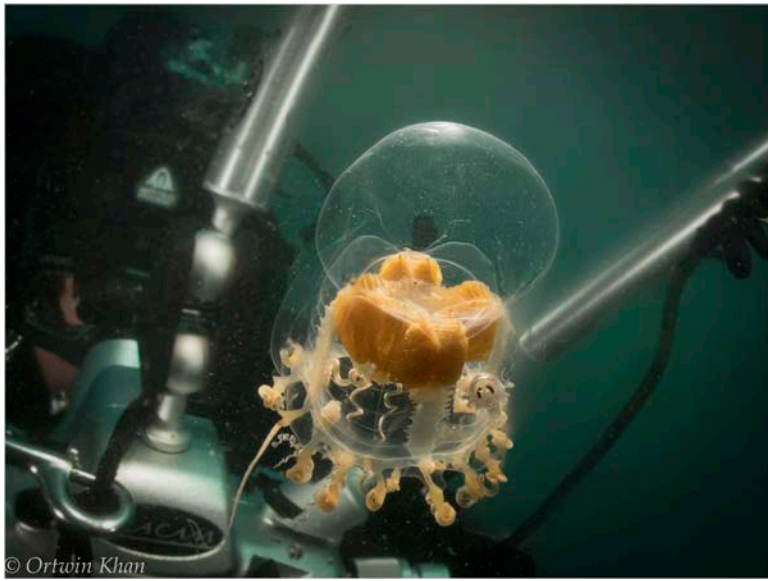
**Dive 6 : Gåshamna / Hornsund -
76°56.838'N / 015° 47.581'E**



Gåshamna - the goose bay was our dive spot for the afternoon. On the westside of the bay we found some rocks sticking out of the 3 to 4 m deep ground. A barnacle goose welcomes us on one of the rocks. The ground went down to 12m and was covered with kelp. Hard to take a picture of one of the crabs or fish hiding in the kelp. You had to open the kelp curtain with your hands and when you were ready to take a picture the curtain had closed again. Visibility was only about 3m because also in this bay you had the melting water of all the glaciers in Hornsund.

At this time we did not know that this was our last dive. On 14th of July we wanted to dive at Bamsebu, but visibility was too bad and it was not safe and fun to dive.







PHOTOGRAPHY CONTEST 2018

Your chance to win a € 1000 gift voucher for your next polar adventure.

EVERYONE KNOWS A PICTURE IS WORTH A THOUSAND WORDS, BUT DID YOU KNOW THAT YOUR PHOTOS MIGHT NOW ALSO BE WORTH A **€ 1000 GIFT VOUCHER**?

Share your experience!

Did you catch a rare seabird on the fly? Do you have a panorama of the Northern Lights filling the sky? Did you get up close and personal with a penguin? Did you capture a look of awe or wonder on a fellow passenger's face?

If you've been a passenger on any one of our past voyages we want to see your pictures.

You're free to send in as many pictures as you wish. The best pictures are the ones that capture what it's like to take one of our special expeditions to the remote and beautiful ends of the Earth.



PRIZES



€ 1000

GIFT VOUCHER

for Oceanwide Expeditions



€ 500 gift voucher

for Oceanwide Expeditions



€ 250 gift voucher

for Oceanwide Expeditions

UPLOAD YOUR PHOTO AT

WWW.OCEANWIDE-EXPEDITIONS.COM/GALLERY

The size of your photo should be between 2MB and 8MB. Our lucky winners will be contacted by e-mail and Facebook by November 30, 2018. The photography contest runs from April, 30 until October, 30 2018.

Read the terms and conditions of the contest on www.oceanwide-expeditions.com/page/contest-terms



Kayaking the Waters of Antarctica The weather changes so dramatically down here that you simply cannot say, "this looks like a great day" if it is one – rather you must live in the moment and perhaps a more appropriate phrase might be, "this looks like a great moment"! After enduring Force 8 winds on the Beaufort Wind Scale the Ortelius (our home during this Antarctica cruise) pulled into calm waters at Georges Point affording us our first close look at the breathtaking scenery (icebergs, glaciers and mountainous

TRAVEL WRITING COMPETITION 2018

Your chance to win a € 1000 gift voucher for your next polar adventure.

FANCY YOURSELF AS A TRAVEL WRITER? ENTER OUR ANNUAL TRAVEL WRITING COMPETITION AND YOU JUST MIGHT WIN YOURSELF A **€ 1000 GIFT VOUCHER** FOR YOUR NEXT POLAR ADVENTURE.

Write about your experience!

What was it like to camp out under the Antarctic sky? Was it scary when you encountered a polar bear? Was this your first cruise and were you nervous about crossing open waters?

After all, how your expedition made you feel is what you're going to carry with you for the rest of your life. If you share your experience you just might win yourself a € 1000 gift voucher for your next polar adventure.

Here's what you need to do:

1. Write a post (600 – 1200 words) in Dutch, English, or German about what excited you the most on your Oceanwide Expeditions cruise. The topic is entirely up to you.
2. Make sure you add titles and subtitles to the story.
3. Create a hyperlink or two inside of your post. The link could connect to the ship's page, the trip itinerary, the particular destination's page, or perhaps a page related to one of the activities you enjoyed.
4. Add 3 to 5 pictures (they should be 2 MB minimum in size, in landscape format and attached separately when you decide to send your entry to us).
5. Post it online by completing the entry form "Share your story" (<https://oceanwide-expeditions.com/customer-story/create>) **OR** send your post to us at marketing@oceanwide-expeditions.com. Either way, make sure you include your full name and e-mail address.
6. **Spread the word!**



PRIZES



€ 1000
GIFT VOUCHER

for Oceanwide Expeditions



€ 500 gift voucher
for Oceanwide Expeditions



€ 250 gift voucher
for Oceanwide Expeditions



ENTRIES CLOSE OCTOBER 30

Our lucky winners will be contacted by e-mail and Facebook by November 30, 2018

Read the full terms and conditions on oceanwide-expeditions.com/page/contest-terms

Beau Pruneau - Expedition Leader



Born in California near Los Angeles, Beau moved to Canada when he was one year old. Growing up in a log house in the Canadian wilderness he appreciated the great outdoors at an early age. After graduating college with a diploma in Sustainable Outdoor Recreation Management he headed to British Columbia to work at a ski resort in the Rocky Mountains where he continued to drive just about every type of mechanized vehicle as well as exploring the mountains by snowboard, mountain bike and on foot.

After meeting his German wife in B.C., he moved back to Ontario to work at a ski resort near the great lakes. In 2011 he crossed over to Germany permanently, trying his hand at making wine & building bikes while travelling the world with his wife. Happiest in a jeep out on safari or out on deck searching for polar bears, he now works on expedition ships in the polar regions as an

expedition leader, rifle expert, as well as assisting with helicopter operations. He has also been recently certified as a PTGA Senior Polar Expedition Guide. He currently resides in Dresden, Germany with his beautiful wife & son.

Deutsch: Beau wurde in der Nähe von Los Angeles geboren, wuchs aber in der kanadischen Wildnis in einer Blockhütte auf. Dies lehrte ihn bereits früh, die Natur zu lieben. Er studierte Abenteuer Tourismus und arbeitet danach in einem Skiresort in den Rocky Mountains, wo er alle möglichen Fahrzeuge fuhr, die Berge aber auch mit dem Snowboard, dem Mountain Bike und zu Fuss erkundete.

Er traf seine deutsche Frau in B.C. und zog mit ihr zurück nach Ontario, wo sie in einem Skiresort in der Nähe der Grossen Seen arbeiteten. 2011 zogen sie nach Deutschland und Beau versuchte sich als Weinmacher und Fahrradbauer. Zusammen mit seiner Frau bereiste er die Welt. Am glücklichsten ist er auf Safari in einem Jeep oder an Deck eines Schiffes auf der Suche nach Eisbären. Deswegen arbeitet er jetzt auf Expeditionsschiffen in den Polargebieten als Expeditionsleiter, Waffenexperte und Assistent bei Helikopterflügen. Kürzlich qualifizierte er sich als Polarer Expeditionsguide. Zur Zeit wohnt er in Dresden mit seiner Frau und seinem Sohn.

Dr. Katja Riedel – Assistant Expedition Leader



Katja grew up in Germany, where she studied and completed a PhD in atmospheric chemistry. For her research, she overwintered at the German Antarctic Neumayer Station in 1997, where she was responsible for the Atmospheric Observatory. Since then, she has been on several scientific expeditions to Antarctica, e.g. measuring ozone at Scott Base and drilling ice cores at Law Dome. In Svalbard, she participated in a 220 km skiing expedition

in the North-west of the island of Spitsbergen. In Greenland, she worked as a volunteer in the vicinity of Kangerlussuaq, where she helped to quantify carbon dioxide emissions from plants and soils.

In 2001, the great outdoors drew her to New Zealand, which she now calls home. Here, she worked as a scientist for the National Institute of Water and Atmospheric Research in Wellington. Her main research interests were greenhouse gases in the atmosphere and in ice cores. In 2013, she quit her science job to work as freelance guide, science journalist, and photographer. She has worked as a guide and lecturer on passenger ships in both the Arctic and Antarctic since 2011. Life is an adventure for Katja, and whenever she can, she travels, hikes, cycles, sea-kayaks, and skis to the remote and beautiful places on earth. She is also a keen photographer, juggler, and chef. She speaks fluently German and English.

Deutsch: *Katja wuchs im Bergischen Land auf und promovierte am Alfred Wegener Institut für Polar- und Meeresforschung in Bremerhaven. Für ihre Doktorarbeit in Atmosphären-chemie überwinterete sie 15 Monate lang in der Neumayer Station in der Antarktis. Seit 2001 lebt Katja im wunderschönen Neuseeland, wo sie erst am Nationalen Institut für Wasser- und Atmosphärenforschung in Wellington arbeitete. Dort beschäftigte sie sich hauptsächlich mit Treibhausgasen in der Luft und in Eiskernen. Seit 2013 arbeitet Katja als Reiseführerin und Fotografin.*

In Spitzbergen unternahm sie 2001 eine 220 km lange Ski-Expedition im Nordwesten der Insel. In Grönland arbeitete sie in der Nähe von Kangerlussuaq und untersuchte dort den Kohlendioxidumsatz von Pflanzen in der Tundra. Sie hat auch eine starke Affinität zur Antarktis und hat an fünf wissenschaftlichen Expeditionen teilgenommen und den Kontinent an Bord einer Segeljacht bereist. Neben dem Reisen sind Fotografie, Lesen, Wandern Seekayak und Radwandern ihre großen Leidenschaften. Katja spricht fließend Deutsch und Englisch.

Michelle van Dijk – Guide and Lecturer



Is nearly a local, since she is the owner of Longyearbyen Camping, world's northernmost camping site. Working as a guide, this campsite has been her homebase since 2004.

Living in a tent, she spends three months a year on Spitsbergen guiding day trips, trekking & expedition cruises. These days she mainly works on ships, as guide or expedition leader.

She believes that there is no better way to get closer to a place than to work there – she has also lived in Sweden & Iceland. Her first visit to Spitsbergen was back in 2001 and instantly she fell in love with this remote archipelago.

Although she picked plants as her specialism, Michelle is a generalist. She took the course Arctic & Antarctic studies at Groningen University and recently she published a book about Sjev van Dongen, who took part in the rescue operation after Nobile's airship crashed in 1928.

Michelle has been working as a guide in Antarctica, the Falklands, Faroe Islands, Greenland, Iceland, Jan Mayen, South Georgia, Spitsbergen and Sweden.

Deutsch

Michelle besitzt Longyearbyen Camping, den nördlichsten Campingplatz der Welt. Als sie 2001 zum ersten Mal die Arktis besuchte, verliebte sie sich in diese karge, minimalistische Landschaft. Sie arbeitete anschließend als Naturführerin auf Tages- und Trekkingtouren sowie Expeditionskreuzfahrten.

Sie lebte in Schweden und Island und arbeitete dort, denn sie glaubt, dass man einem Land am besten nahe kommt, wenn man dort auch zur Arbeit geht.

Michelle hat an der Universität Groningen einen Kurs in Arktischen und Antarktischen Studien belegt. Sie hat in der Antarktis, auf den Falklands, Faröer-Inseln, Grönland, Island, Jan Mayen, in Schweden, auf Spitzbergen und Südgeorgien gearbeitet.

Sie können Michelle in verschiedenen Sprachen ansprechen, aber sie wird nur in Holländisch, Englisch, Deutsch oder Schwedisch antworten.

Tom van Hoof – Expedition Guide



Tom fell in love with the Arctic when he was attending a climatology masterclass as student at the University Centre of Svalbard in 2001. During his PhD research at Utrecht University he organised and carried out several lake coring expeditions in the USA and Scandinavia. During his PhD Tom published a number of key scientific publications on the role of CO₂ on climate change during the past millennium. After living a year in the desert of Tucson, Arizona (USA), where he was working as a Postdoctoral research fellow at the University of Arizona, Tom returned to the Arctic when he started working for the Dutch Geological Survey in 2005. As a biostratigrapher (fossil-lover) he returned to Spitsbergen for a number of expeditions, collecting rocks and guiding fellow geologists. Tom's academic background in geology/paleoclimatology is a broad one, ranging from climate change during the past

1000 years to ecology of coal forming swamp ecosystems 300 million years ago. He loves to be outside especially in the Arctic wilderness. In 2018 Tom left the Dutch Geological Survey and started his own geological consultancy business.

Deutsch: Tom hat sich in die Arktis verliebt als er 2001 einen Master-Kurs für Studenten der Klimatologie am Universitätszentrum von Svalbard besuchte. Während seiner Doktorantenzeit an der Universität Utrecht hat er einige Sedimentkernbohrungen in Seen Skandinaviens und der USA organisiert und durchgeführt. Während seiner Promotion veröffentlichte er eine Reihe von wissenschaftlichen Artikeln über die Rolle von CO₂ in Zusammenhang mit dem Klimawandel des letzten Jahrhunderts. Nach einem Jahr in Tucson, Arizona (USA), wo er nach seiner Promotion als wissenschaftlicher Mitarbeiter an der Universität von Arizona tätig war, kehrte Tom in die Arktis zurück, wo er 2005 begann für den holländischen Geologischen Dienst zu arbeiten. Als Paläontologe (Fossilienliebhaber) kam er für eine Reihe von Expeditionen nach Spitzbergen zurück, um Gestein zu sammeln und andere Geologen zu führen. Toms akademisches Hintergrundwissen Geologie und Paläoklimatologie ist breit angelegt und reicht von Klimaveränderungen in den letzten 1000 Jahren bis zur Ökologie Kohle bildender Sumpfsysteme vor 300 Millionen Jahren. Er ist gerne draußen unterwegs, besonders in der arktischen Wildnis. 2018 hat Tom den Holländischen Geologischen Dienst verlassen und sein eigenes Unternehmen im Bereich Geologie gegründet.

ANDREAS ALEXANDER – EXPEDITION GUIDE



Andreas studied geology and mechanical engineering in Germany, worked on power plant construction sites in Austria and the Netherlands, a scientific drilling project in the Swedish mountains and studied volcanoes in Alaska. Following his passion for ice, snow and mountains he moved up to Svalbard where he studied Arctic Technology, Arctic Geology, Arctic Geophysics and Arctic Biology at the University Centre of Svalbard. He soon started his own glacial research and can now regularly be found crawling and climbing under glaciers, trying to resolve some of the big riddles in glaciology. Besides his research, Andreas works as a field assistant for the University Center in Svalbard, as an editor, as photographer and as a guide, where he shares his polar fascination with the guests. His work and research has lead him all around Svalbard, from the Polish Polar station in Hornsund, over Ny-Ålesund up into the ice at 81° North.

Andreas hat Geologie und Maschinenbau in Deutschland studiert, auf Kraftwerksbaustellen in Österreich und den Niederlanden und einer Forschungsbohrung in den schwedischen Bergen gearbeitet und in Alaska Vulkane studiert. Seiner Faszination für Eis, Schnee und Berge folgend, ist er nach Longyearbyen gezogen wo er Arktisch Technologie, Arktisch Geologie, Arktische Geophysik und Arktische Biologie am Universitätszentrum Spitzbergen studiert hat. Bald darauf hat er seine eigene Gletscherforschung begonnen und kann nun regelmäßig kletternd und kriechend unter Gletschern gefunden werden. Auf der Suche nach Lösungen für einige der großen Rätsel der Glaziologie. Neben seiner Forschung arbeitet Andreas als Feld Assistent für das Universitätszentrum in Spitzbergen, als Lektor, Fotograf und als Guide, ein Job bei dem er seine polare Faszination mit seinen Gästen teilt. Seine Arbeit und Forschung hat Andreas rund um Spitzbergen geführt: Von der Polnischen Forschungsstation in Hornsund, über Ny-Ålesund bis hinein ins Eis auf 81° Nord.

Adam Turner, FRGS — Expedition Guide



English

Adam was brought up in countryside of Essex, England. He began sailing at the age of 9 and began working on the local river aged 12 before leaving school. By 16 he had a small fishing boat and was working on boatyards and taking tourists to see the local seal colonies as well as helping out on the local Lifeboat. Adam then joined HM Forces and was posted to Northern Ireland and in the UK, he also served in Kenya as a boat operator. In 2002 Adam joined the Police and spent several years on a specialist unit working across the UK with his search dog Charley. Since being a young lad Adam had dreamt of working in the Antarctic like his Uncle had done in the late 1980's, in 2014 Adam left the Police and worked as

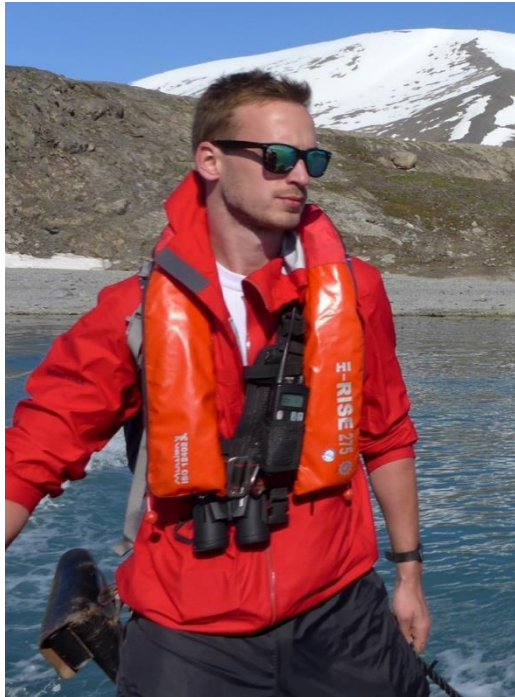
Boating Officer for British Antarctic Survey at King Edward Point, South Georgia where he spent just over a year. Adam studied at Middlesex University and gives lectures on history, in 2017 he was elected as a Fellow of the Royal Geographical Society, he now works as guide and Consultant.

Adam hold a commercial masters certificate and instructs in several marine disciplines, he enjoys diving, climbing, kayaking and outdoor activities.

Deutsch

Adam ist in Essex, England aufgewachsen. Schon mit 9 Jahren begann er zu segeln und arbeitete mit 12 auf dem lokalen Fluss, bevor er die Schule verließ. Schon mit 16 war er Eigentümer eines kleinen Fischerbootes, arbeitete in kleinen Werften und nahm Touristen auf kleine Ausflüge zu den lokalen Seehundbanken mit. Er war außerdem auf dem örtlichen Rettungsboot beschäftigt. Seine Ausbildung erhielt er in der Armee und wurde in Nordirland, England sowie Kenia als Bootsführer stationiert. 2002 ging er zur Spezialeinheit der Polizei und arbeitete überall in England mit seinem Suchhund Charly und bildete Hunde aus. Seine Liebe zum Wasser hat Adam nie aufgegeben: Er unterrichtet verschiedene Techniken der Seefahrt und ist der Fahrer seines örtlichen Rettungsbootes. Seit seinen jungen Jahren hat er davon geträumt, eines Tages wie sein Onkel in der Antarktis zu arbeiten. Für diesen Traum verließ Adam im Jahr 2014 die Polizei, um als Bootsoffizier für ein Jahr für das British Antarctic Survey auf King Edward Point, Südgeorgien zu arbeiten. In England ist Adam als freiberuflicher Berater und Trainer beschäftigt. Mit seiner kleinen Familie genießt er es, in der Natur unterwegs zu sein. Adam ist sehr an Geschichte und Tieren interessiert.

Ben Frederiks – Expedition Guide



2013 hat Ben Spitzbergen zum ersten Mal besucht, und für ihn wurde damit ein Traum wahr. Während seines Studiums der Meeresbiologie hat er mehrfach Feldarbeiten im nördlichsten Dorf der Welt Ny-Ålesund durchgeführt. Seitdem kommt er regelmäßig nach Spitzbergen und freut sich darauf seine hocharktischen Erfahrungen mit Euch teilen.

Ben hat sich mit den verschiedenen Effekten des Schiffverkehrs auf die arktischen Regionen; inklusive des Problems der Ölverschmutzung beschäftigt. Er ist sehr interessiert an der

Biologie/Ökologie und Geschichte der Arktis. Für Ben ist Spitzbergen der perfekte Ort um zu arbeiten, denn hier gibt es all dies auf engstem Raum!

Seit 2015 arbeitet Ben zu Hause als hydrographischer Vermesser an der Nordsee. Trotzdem hat ihn, seit seinem ersten Besuch, der “Arktisvirus” nicht mehr losgelassen und er freut sich immer auf ein weiteres Abenteuer in diesem arktischen Archipel.

English: *Discovering Spitsbergen in 2013 was like a dream coming true for Ben. During his studies in marine biology he conducted fieldwork which took him to the world’s most Northern settlement: Ny-Ålesund. Here he fell in love with the Arctic Archipelago, and he has been returning to the Arctic ever since.*

In the past, Ben worked on different scientific topics: Arctic shipping and the effect of oil spills in Arctic Regions. Ben is very interested in the Arctic biology/ecology and history, which makes Spitsbergen a perfect place for him to work, because it is filled with all of it!

Since 2015 Ben works as a hydrographic surveyor on the North Sea, but since his first visit to Spitsbergen he has caught the “Arctic virus” and is always looking forward to another adventure in the Arctic Archipelago!

Anke Timmerberg – Expedition Guide



Anke was born in 1963 in Germany where she still lives in a very rural area as a teacher for German, geography and physical education. During her holidays she has been working as an expedition guide since 2010. Already as a child she was fascinated by the polar regions. After travelling to most parts in Scandinavia, Canada, USA, Australia and New Zealand she finally got the chance to see the remote places of Antarctica and the Arctic. Right from the beginning she was infected with the

“polar virus” and returns every year as a guide and lecturer sharing her love and knowledge of the icy parts of the world.

Anke’s special interest is all kind of wildlife from the smallest bug to the King of the Arctic. She’s an experienced photographer and was already working as a photographer in residence on an expedition cruise ship. Anke speaks German, Swedish and English.

Deutsch: Anke ist 1963 in Deutschland geboren, wo sie noch immer lebt und als Lehrerin die Fächer Deutsch, Geographie und Sport unterrichtet. Seit 2010 arbeitet sie während ihrer Ferien als Expeditions Guide. Schon als Kind haben sie die Polarregionen fasziniert. Nachdem sie fast alle Gegenden in Skandinavien, Canada, die USA, Australien und Neuseeland bereist hat, ergab sich die Gelegenheit die weit entfernten Gebiete der Antarktis und Arktis zu besuchen. Gleich zu Anfang hat sie sich dabei mit dem „Polarvirus“ infiziert und kommt seither jedes Jahr als Guide zurück, um ihre Kenntnisse und ihre Liebe zu den eisigen Gegenden unserer Welt zu teilen.

Ankes besonderes Interesse gilt der Tierwelt vom kleinsten Käfer bis zum König der Arktis. Sie ist eine erfahrene Fotografin und hat auch schon als Bordfotografin auf Expeditionskreuzfahrtschiffen gearbeitet. Anke spricht Deutsch, Schwedisch und Englisch.

Michael Green – Dive Master



When young I spent the summers by the sea with my grandfather. This gave me a love of all things maritime. I took up sport diving in 1990 after being a diver in the Navy. I am a British Sub Aqua Club Open Water Instructor, PADI instructor and Advanced Diver. I hold certificates to operate both Inspiration and Drager rebreathers.

I have dived worldwide and have led trips to Scotland, Chuuk Lagoon and Palau, Bikini Atoll, Cuba plus Galapagos. I have worked for the last three years in the polar regions. I enjoy wreck diving and have been on many expeditions to explore wrecks around the world. Outside of diving I am doing a degree in photography and art in the UK.

Deutsch: Ich verbrachte die Sommer meiner Kindheit mit meinem Großvater an der See, und so wuchs meine Liebe für das Meer. Nachdem ich in der Navy tauchte, begann ich 1990 mit dem Sporttauchen. Ich bin British Sub Aqua Club Open Water Instructor, PADI instructor und Advanced Diver.

Ich war in vielen Tauchgebieten rund um die Welt unterwegs und habe Trips nach Schottland, in die Chuuk Lagune und Palau, das Bikini Atoll und Kuba und habe mindestens drei Jahre in den Polarregionen gearbeitet. Ich tauche gern bei Wracks und war auf vielen Expeditionen um Wracks rund um die Welt zu erkunden. Neben dem Tauchen studiere ich Fotografie und Kunst in Großbritannien.

Tanja Bayer - Dive Guide



Tanja was born in Germany and is at home in Oberursel, near Frankfurt / Main in Germany. She has been diving since 1990 and has done more than 4300 dives all over the world. In Oberursel she is running her own Diving Center „TaWo Diving“ since 1996.

As a Master Instructor and Course Director she teaches Diving and also trains Diving Instructors. Training experienced divers in cold water diving and ice diving is her favorite task. Her „second“ profession is being a doctor in General Practice, Accident & Emergency and Diving Medicine. Tanja has been working as a ships doctor since 2009 in Antarctica and since 2015 in the Arctic with Oceanwide Expeditions. As a Dive Guide and Diving Expedition Leader she takes divers all around the world. Asked for her favourite dive sites, she mentions „Planeau Bay“ in Antarctica. „Cold water diving is really

something special and challenging. You have to be experienced and always aware of hypothermia. But it is a great feeling to touch an iceberg or to see all this colorful animals surviving in this harsh regions!“

Deutsch: Tanja wurde in Deutschland geboren und ist Oberursel, einem kleinen Ort in der Nähe von Frankfurt am Main, zu Hause. Sie taucht seit 1990 und hat mehr als 4300 Tauchgänge in den Gewässern dieser Welt gemacht. In Oberursel betreibt sie, zusammen mit ihrem Mann, seit 1996 ein Tauchcenter. Als Master Instructor und Course Director bildet sie Taucher und Tauchlehrer aus. Das Training für Kaltwassertauchen und Eistauchen mag sie besonders.

Ihr „zweiter Beruf“ ist Ärztin für Allgemeinmedizin und Unfallchirurgin. Seit 2009 arbeitet sie auch als Schiffsärztin in der Antarktis und seit 2015 an beiden Polen.

Als Tauchguide und Reiseleiter führt sie Taucher zu Tauchgebieten weltweit. Wenn man sie nach ihrem Lieblingstauchplatz fragt, sagt sie „Planeau Bay“ in der Antarktis.

„Kaltwassertauchen ist wirklich etwas Besonderes und Herausforderndes. Man sollte erfahren sein und muss sich immer vor Unterkühlung schützen. Aber es ist grossartig einen Eisberg anzufassen oder die bunte Welt der Tiere anzuschauen, die in dieser lebensfeindlichen Umgebung überleben!“

Johan Petersson - Dive guide



Johan works for Oceanwide Expeditions often as a dive guide but does the occasional trip as a guide and lecturer.

He has studied history and comparative religion at university and worked as a history teacher. He is a dive instructor and has worked with marine archaeologists mapping Viking Age harbours. Johan has worked as a crewmember on a dive ship exploring the well-preserved shipwrecks of the Baltic Sea. He has also mapped coral reefs in Queensland and in 2010 he started to

work as a dive guide in the Polar Regions.

When not diving or messing about with boats, Johan works as a self-employed carpenter. He lives in Lund in the south of Sweden with his wife and two daughters.

Johan arbetar för Oceanwide Expeditions häufig als Tauchguide und gelegentlich auch als Guide und Dozent.

Er studierte Geschichte und vergleichende Religionswissenschaften an der Universität und arbeitete als Geschichtslehrer. Er ist Tauchlehrer und hat mit Meeresarchäologen zusammen gearbeitet, um die Häfen der Wikingerzeit zu kartieren. Johan hat als Besatzungsmitglied auf einem Tauchschiiff gearbeitet und die gut erhaltenen Schiffwracks der Ostsee erkundet. Er hat auch Korallenriffe in Queensland kartiert. 2010 begann er als Tauchguide in den Polarregionen zu arbeiten.

Wenn er nicht taucht oder mit Booten herumhantiert, arbeitet Johan als selbständiger Schreiner. Er lebt mit seiner Frau und zwei Töchtern in Lund im Süden von Schweden.

Mike Pumm - Dive Guide



I was born in Switzerland in 1987 and work as a financial advisor and dive instructor. Beside my job, I love to travel the whole world. I got the travel nerves very early when I was travelling alone for the first time with 13 years old. Since then, travelling has been my favorite hobby no matter if deep underwater or high up in the mountains. I like to be on the move and preferable include diving whenever possible. So far, I've travelled to more than 60 countries and I have already been in all climate zones including the Antarctic. I had the opportunity to live in Honduras for a few years and together with my wife I managed a dive resort there.

When not being abroad, I still dive approximately once a week in the lakes around my hometown.

Deutsch: Ich wurde 1987 in der Schweiz geboren und arbeite als Finanzberater und Tauchlehrer. Neben meiner Arbeit reise ich gerne durch die ganze Welt. Die Reiselust packte mich sehr früh, als ich zum ersten Mal mit 13 Jahren alleine unterwegs war. Seitdem ist Reisen mein grösstes Hobby, egal ob tief unter Wasser oder hoch oben in den Bergen. Natürlich bevorzuge ich jederzeit das Tauchen. Bis jetzt habe ich mehr als 60 Länder bereist und war bereits in allen Klimazonen der Erde, einschließlich der Antarktis. Ich hatte die Möglichkeit, einige Jahre in Honduras zu leben und zusammen mit meiner Frau dort ein Tauchresort zu betreiben. Wenn ich nicht im Ausland bin, tauche ich immer noch ungefähr einmal pro Woche in den Seen meiner Heimatstadt.





Captain Evgeny Levakov
and his international crew

Including:

Chief Officer:	Artur Iakoviev	[Russia]
2nd Officer:	Romanas Vicas	[Lithuania]
3rd Officer:	Luis Oroceo	[Phillipines]
Chief Engineer:	Sebastian Alexandru	[Romania]
Hotel Manager:	Dejan Nikolic	[Serbia]
Assist. Hotel Manager:	Gabor Ferencz	[Hungary]
Head Chef:	Mario Hribernik	[Austria]
Sous Chef:	Ivan Yuriychuk	[Ukraine]
Ship's Physician:	Edwin van Leeuwen	[Netherlands]
Expedition Leader:	Beau Pruneau	[Canada/Germany]
Assist. Expedition Leader:	Katja Riedel	[Germany/New Zealand]
Expedition Guide:	Michelle van Dijk	[Netherlands/Spitsbergen]
Expedition Guide:	Tom van Hoof	[Netherlands]
Expedition Guide:	Andreas Alexander	[Germany/Spitsbergen]
Expedition Guide	Adam Turner	[UK]
Expedition Guide:	Ben Frederiks	[Netherlands]
Expedition Guide:	Anke Timmerberg	[Germany]
Dive Leader:	Michael Green	[UK]
Dive Guide:	Tanja Bayer	[Germany]
Dive Guide:	Johan Petersson	[Sweden]
Dive Guide:	Mike Pumm	[Switzerland]



Around Spitsbergen

Embarkation Longyearbyen

Friday 6th July 2018

- 1600 **Welcome on board!** Your luggage will be delivered to your cabin as soon as possible. Check to make sure you are not missing anything. Feel free to explore around the ship. Refreshments are available in the Lounge Bar on Deck 5.
- 1715 We will have a **Mandatory Safety and Lifeboat Drill in the Lounge. ALL PASSENGERS** are required to attend this very important safety briefing. Please listen for announcements over the PA system.
- 1830 Our Hotel Manager DJ will give an **introduction to the ship.**
- 1900 **Captain's Cocktails!** Captain Evgeny Levakov and Hotel Manager DJ invite you to join them for a Welcome Drink in the Lounge. You will meet your Captain and your Expedition Leader, Beau Pruneau who will introduce the rest of the Expedition Team.
- 1930 **Dinner** is served in the Dining Room located on Deck 3 behind Reception. Bon appétit.
- ~2100 We will call you down deck by deck to the **Boot Room on Deck 3 forward**, to collect your rubber boots. Please listen out for announcements pertaining to your deck and don't forget to bring your thick warm socks.

This evening we will sail into open waters and we expect the ship to roll. Please ensure you secure all of your valuables (cameras, computers, etc.) in your cabin to prevent any accidents. Use the handrails when you move around the ship at all times, and especially in rough weather. Always keep at least one hand free to hold on to the ship. Thank you.

- 0700 Your first wakeup-call from your Expedition Leader Beau. Good Morning!
- 0730 **Breakfast Buffet** is available in the Dining Room for 1 hour.
- 0830 Mandatory Briefings.**
You must attend these essential briefings with your Expedition Team. This will cover aspects of Polar bear safety and Zodiac operations on board. These will take place in the Lounge.
- ~1100 **14 Julibukta Zodiac Cruise.** We would like to offer a zodiac cruise at a small bird colony at some cliffs by the ocean. Brunich's Guillemots, Kittiwakes, and perhaps some Puffins can be found nesting there. We will split into two groups for this cruise:
- ~1100 Group 1 Deck 4
- ~1200 Group 2 Deck 2, 3, 5, & 6
- The first three Zodiacs of each group will have German speaking drivers.
- 1330 **Lunch Buffet** is available in the Dining Room for 1 hour.
- 1500 **Ny Ålesund Landing.** We will go ashore at the Northernmost scientific community in the world, Ny Ålesund. We will transfer everyone via zodiac to a jetty, where everyone is free to walk around on the roads and visit the shop/post office & museum. Guides will be around to help with orientation. Please do not wander off the roads & paths as there are restricted wildlife areas. Do not wander out of town by yourself as there is always a danger of polar bears and it is forbidden. For those who would like to hear some history, please meet with Michelle at the bust of Amundsen at 1630 where she will also lead everyone outside of town as a group to visit the mast. **Absolute last zodiac back to the ship is 1745.**
- 1830 **Re-cap.** This is a chance to meet with the Expedition Team to look ahead to our plans for tomorrow.
- 1900 **Dinner** will be served in the Dining Room.

- 0700 Wake-up call. Good Morning!
- 0730 **Breakfast Buffet** is available in the Dining Room for 1 hour.
- 0900 **Bockfjord Landing.** We plan to go ashore, weather conditions allowing, at a place called Bockfjord. Fantastic geology surrounds the area, and it is known for some 'hot springs', or rather warm springs, that feed up from underground. We will organize hikes of a gentle, medium, and fast pace. Fast hikers please head to the gangway first.
- 1230 **Lunch Buffet** is available in the Dining Room for 1 hour.
- ~1430 **Monacobreen Zodiac Cruise.** This will be a zodiac cruise at a large impressive glacier front called Monacobreen glacier. It is named after Duke Albert I. of Monaco, who led an expedition to map the glacier in 1906/1907. German speakers please go to the gangway last as the **last 3 zodiacs will be German speaking.**
- ~1430 Group 1 Deck 2, 3, 5, & 6
- ~1600 Group 2 Deck 4
- 1830 **Re-cap.** This is a chance to meet with the Expedition Team to look ahead to our plans for tomorrow.
- 1900 **Dinner** will be served in the Dining Room.

- 0715 Wake-up call. Good Morning!
- 0730 **Breakfast Buffet** is available in the Dining Room for 1 hour.
- 0900 **Phippsøya Landing.** We plan to land at an island called Phippsøya. It belongs to a small island group called the Seven Islands, consisting of nine islands in total. A very dry barren rocky landscape awaits us, as it is considered a polar desert. We will arrange hikes of a gentle, medium, and fast pace. Fast hikers please come to the gangway first.
- 1230 **Lunch Buffet** is available in the Dining Room for 1 hour.
- This afternoon we plan on heading as far north as we can, in an attempt to reach the pack ice. If we are lucky we might reach it by late evening. While we will attempt this, we cannot guarantee that it is possible to reach.
- 1500 Andreas will talk about the **Geology of Svalbard**. This will be in the lounge in English. At the same time Michelle would like to give her talk about **Flowers of the Arctic**, this time in the Dining Room in German.
- 1700 Adam would like to talk about a famous arctic explorer, **Leigh Smith**. This will be in English, in the lounge. At the same time Anke will talk about **Amundsen**, for the German speakers in the Dining Room.
- 1830 **Re-cap.** This is a chance to meet with the Expedition Team to look ahead to our plans for tomorrow.
- 1900 **Dinner** will be served in the Dining Room.

0745 Wake-up call. Good Morning!

0800 **Breakfast Buffet** is available in the Dining Room for 1 hour.

AM & PM **Expedition Day.** We will spend the day in the pack ice, scouting for large white marine mammals. Please head out on deck and help scout, as the more eyes searching the better chances we have of spotting something. Depending on what we see, we will arrange lectures throughout the day. Please listen out for announcements pertaining to timings & subject.

1230 **Lunch Buffet** is available in the Dining Room for 1 hour

1830 **Re-cap.** This is a chance to meet with the Expedition Team to look ahead to our plans for tomorrow.

1900 **Dinner** will be served in the Dining Room.

0715 Wake-up call. Good Morning!

0730 **Breakfast Buffet** is available in the Dining Room for 1 hour.

~0900 **Alkefjellet Split Zodiac Cruise.** We would like to offer a zodiac cruise along a large impressive bird cliff, known as Alkefjellet (Auk Cliff) located in the Hinlopen Strait on the eastern side of Spitsbergen. Brunich's Guillemots & Kittiwake's nest there by the thousands. Remember to wear guano proof clothing! We will organize into two groups for this:

~0900 Group 1: Deck 2, 3, 5, & 6

~1020 Group 2: Deck 4

The **last 3 zodiacs** will have German speaking drivers.

1300 **Lunch Buffet** is available in the Dining Room for 1 hour.

~1500 **Torellneset Landing.** This sandy beach shoreline is on the western side of Nordaustlandet and is known for sometimes having a colony of walrus hauled out on shore. If the walrus are home, we will organize into two groups to visit them at separate times:

~1500 Group 1: Deck 4

~1615 Group 2: Deck 2, 3, 5, & 6

1830 **Re-cap.** This is a chance to meet with the Expedition Team to look ahead to our plans for tomorrow.

1900 **Dinner** will be served in the Dining Room.

- 0715 Wake-up call. Good Morning!
- 0730 **Breakfast Buffet** is available in the Dining Room for 1 hour.
- 0915 **Kapp Waldburg Landing.** This place is known as the ‘Kittiwake Canyon’, on the southern edge of the island Barentsøya. If conditions allow, we will land ashore and walk up and into a small canyon where thousands of Kittiwakes nest, some of them close to ground level. Sometimes arctic foxes are seen running around attempting to plunder the nests. We will all hike up to the entrance of the canyon together and enter the canyon to view the Kittiwakes at a close range.
- 1230 **Lunch Buffet** is available in the Dining Room for 1 hour.
- 1430 **Kapp Lee Landing.** We plan to go ashore and land at Kapp Lee, on the northern side of the island Edgeøya. An old trappers hut stands near the beach, and sometimes walrus are hauled out on the sandy shore nearby. We will arrange hikes of a gentle, medium, and fast pace.
- 1830 **Re-cap.** This is a chance to meet with the Expedition Team to look ahead to our plans for tomorrow.
- 1900 **Dinner** will be served in the Dining Room.

- 0715 Wake-up call. Good Morning!
- 0730 **Breakfast Buffet** is available in the Dining Room for 1 hour.
- 0845 **Burgerbukta Zodiac Cruise.** This small two-part bay near the entrance of Hornsund, is known not for excellent meat sandwiches but for glaciers and geology. We will organize a split zodiac cruise:
- ~0845 Group 1: Deck 2, 3, 5, & 6
- ~1030 Group 2: Deck 4
- The **first 3 zodiacs** will be German speaking.
- 1230 **Lunch Buffet** is available in the Dining Room for 1 hour.
- 1430 **Gåshamna Landing.** We will go ashore at Gåshamna, or Goose Bay, and split up into groups for hiking. Please be careful near the landing beach as there are old whale bones with fragile moss and vegetation around them. Please keep several meters away from the edge of the bones and vegetation. Hikes of a gentle, medium, and fast pace will be organized.
- 1830 **Re-cap.** This is a chance to meet with the Expedition Team to look ahead to our plans for tomorrow.
- 1900 **A special Dinner** has been arranged outside on Deck 3 aft, behind the Dining Room. Please wear a warm jacket and your dancing shoes!

- 0715 Wake-up call. Good Morning!
- 0730 **Breakfast Buffet** is available in the Dining Room for 1 hour.
- 0900 **Bamsebu Perimeter Landing.** An old trappers hut stands near the beach, as well as thousands of old beluga whale bones piled up in rows. We will have guides positioned in a half circle around the back, while you are free to roam within the semi-circle. Please keep several meters from the whale bones and do not step on or touch them, as they are fragile and historical. Please do not stray outside the line of guides for safety reasons.
- 1230 **Lunch Buffet** is available in the Dining Room for 1 hour.
- 1400 **Ingeborgfjellet Landing.** This place is very special as it is known for a colony of little auks, a small family member of the guillemots. These noisy birds nest in rocky slopes, and swarm together when flying. Reindeer are also sometimes in the area as it is very green and vegetation thrives here. We will walk up to the colony of little auks together, and if reindeer are nearby a hike will be arranged to view them closer.
- 1815 **Captains Farewell Cocktail.** We will toast our voyage with the captain as we sail back into Isfjord and towards Longyearbyen to end our journey.
- 1900 **Dinner** will be served in the Dining Room. For the early risers on **Flight SK4499 Longyearbyen to Oslo at 0800**, there will be items available for you in the Dining Room to take as a packed breakfast/lunch on the bus/flight.
- ~2030 Time to return your rubber boots to the Boot Room on Deck 3 forward. Please listen out for announcements as we will call you down deck by deck.



Longyearbyen
Sunday 15th July 2018

- 0445 First wakeup call for early flight passengers on **Flight SK4499 Longyearbyen to Oslo at 0800.**
- 0515 At this time everyone on **Flight SK4499** please leave your large check-in luggage outside your door as we will bring it to the gangway for you. Please remember to leave your room keycard at reception.
- 0600 Bus transfer from pier to airport. Please identify your own luggage and bring it to the buses. Staff will be there to help.
- 0715 Second wakeup call for all remaining passengers.
- 0730 **Breakfast Buffet** is available in the Dining Room for 1 hour. When you go to breakfast, please place your large check-in luggage outside your cabin for collection by staff and crew and return your keycard to reception.
- 0900 Bus transfer from pier to town.

Please identify **your own** luggage on the pier. If you are on **Flight SK4425 at 1445** your luggage goes into the luggage truck which will bring it to the airport at 1230. All other passengers please bring your luggage with you on the bus. Both buses will bring everyone into the town centre at Svalbard Buttiken. At 1230 the bus will pick up everyone on **Flight SK4425** at the same place Svalbard Buttiken to bring to the airport, where your large check-in luggage will be waiting for you by the luggage truck at the entrance to the airport. Please check it in.

On behalf of Captain Evgeny Levakov, his officers and crew, Beau and the Expedition Team, as well as DJ and Gabor and the Hotel Department, we would like to thank you for travelling with us onboard Plancius, and we wish you a pleasant and safe onward journey.