



Spitzbergen -In search of polar bears & pack-ice

Onboard

MS Hondius

14th of June 2019 - 21st of June 2019



The MV *Hondius* was built in 2019 in Brodosplit, Croatia, as an expedition vessel for Oceanwide Expeditions. Now the ship is sailing as a 196-passenger vessel with 83 cabins. *Hondius* is 107.60m long, 17.60m wide and has a maximum draught of 5.3m and with an exceptionally high Ice class of PC6, top speed of 15 knots and 3 diesel generators. The *Hondius* sails on LSMGO. Our beautiful, modern vessel carries 369m³ of fresh water and has a water plant producing 70m³ per day. The *Hondius* is everything you can dream of for adventurous, Oceanwide Expeditions!



Captain Alexey Nazarov

and his international crew of 72 members including:

First Officer:	Andre Klein	[Germany]
Second Officer:	Romanas Vicas	[Lithuania]
Staff officer:	Toni Salo	[Finland]
Third Officer:	Igor Nazarov	[Russia]
Chief Engineer:	Sebastian Alexandru	[Romania]
Hotel Manager:	Michael Frauendorfer	[Austria]
Assist. Hotel Manager:	Johnny van Velzen	[Dutch]
Head Chef: Sous Chef:	Ralf Barthel	[Germany]
Ship's Physician:	Karen Bloemendal	[Dutch]
Expedition Leader:	Jan Belgers	[Dutch]
Assist. Expedition Leader:	Adam Turner	[U.K.]
2 nd Assistant Exp. Leader	Iain Rudkin	[U.K.]
Expedition Guide:	Tobias Brehm/ Geologist	[Germany]
Expedition Guide:	Miriam Vermeij/ Naturalist	[Dutch]
Expedition Guide:	Marcel Paul/ Naturalist	[Dutch]
Expedition Guide:	Sara Jenner/ Photographer	[UK]

Expedition Guide:	Szymon Niezabitowski/ Biol	[Poland]
Expedition Guide:	RosalieSteffen/Mar.scientist	[Germany]
Expedition Guide:	Pierre Gallego/ Vet. cetaceans	[Luxemburg]
Expedition Guide:	Laurence Dyke/ Glaciologist	[U.K.]
Expedition Guide:	Bill Smith/ Artist	[Scotland]
Expedition Guide:	Andreas Alexander/ Glaciologist	[Germany]

Welcome you on board!



Day 1: 14rd of June 2019

Embarkation (Longyearbyen)

'A journey of a thousand miles begins with one step' - Lao Tzu

GPS position at 18:00: 78°14,3'N/ 011°00,5'E

Air temp.: 5°C
Sea state: calm

Sea temp.: 7°C
Wind: NNE-2

Swell: 0m
Weather: overcast, sunny



Svalbard did not live up to its expectations and welcomed us with a rather unusual sight. We have all heard about this isolated Norwegian archipelago in the Arctic Ocean with few inhabitants, yet we were greeted by a 2300 passenger cruise ship from Germany instead. Down town Longyearbyen showed similar characteristics to Mallorca during today's afternoon. It was surprisingly hard to find a cap, not mentioning a place in one of the few restaurants around. This experience enhanced our excitement regarding the embarkation of the *Hondius* aiming to set sail to more wild and pristine places around Svalbard.

We were picked up from the airport and received a warm welcome in this cold place. The midnight sun was shining, so were the faces of the expedition team when they met us for the first time. Our luggage was transported to the ship separately, which is why most of us enjoyed strolling around town in the never-ending daylight. We met our fellow passengers along with the expedition stuff at a small jetty aside the large cruise ship.



After life vests were given out, we were prepared for our expedition adventure. The first zodiac ride to the ship left us with a taste of what to expect during the following days.



Once onboard we met our expedition leader Jan Belgers in the lounge for an introduction to the safety procedures onboard, followed by a mandatory safety drill practicing abandoning ship procedures.

Finally, it was time to join our first delicious dinner onboard, while talking to fellow guests and making new friends.

After dinner, we met the whole expedition team in the lounge and were introduced to the plans for the voyage and soon learned that there are almost no real plans whatsoever. Regarding the plans for the next days, we heard that there are no plans except for ice, 'white fluffy things' and ice and ice and ice. We were told that we have to be spontaneous as new plans arrive due to variations in wildlife and weather.

The evening ended in the bar and around the most important machine onboard- the coffee machine ;). New friendships started to evolve as well as first arguments, which were partially solved and dimmed by the overall excitement among most of us. The first night under the light midnight sun onboard was about to begin. Off to new destinations and into the wild!

Lower your expectations and the quality of your experiences will rise & ice is nice, very much indeed ☺





Day 2: 15th of June 2019

'Happiness is when what you think, what you say and what you do are in harmony' Mahatma Gandhi

GPS position at 12:00: 79°41,8'N, 011°07,2'E

GPS position at 18:00: 79°46,5'N, 010°59,7'E

Air temp.: 3.5°C
Sea state: smooth

Sea temp.: 4.1°C
Wind: NW-2

Swell: 0m
Weather: overcast

After a smooth night, without too many waves we woke up in foggy surroundings. The ship made good progress overnight and we were heading for a ship's cruise in Smeerenburg Fjorden.



After breakfast, everybody had to attend the mandatory AECO lecture but when the fog lifted just after breakfast everybody was enjoying the beautiful surroundings and the walrus sightings that were out on the ice flows around the ship. So, we postponed the meeting and we had some very good sightings of these impressive walrus before we headed for the Smeerenburgreen, or Smeerenburg glacier, as "Breen" is Norwegian for glacier.

At 11.00 there was no escape anymore and all passengers joined the compulsory meeting in the lounge. During the meeting, the expedition leader Jan explained the goals and objectives of AECO, which stands for Association of Arctic Expedition Cruise Operators. Basically, it tells everybody what to do and not to do when traveling around the Arctic to make sure the delicate eco system is disturbed as little as possible.

Therefore, it's important that all passengers will receive this information before heading out of the ship on a landing or a zodiac cruise.

Straight after the meeting it was time for rubber boots. Deck by deck everybody was called down to collect rubber boots from the boot room, it can be difficult sometimes to find the right size but at the end all got a pair that fitted well. The colour choice however was an issue for anybody though!



After a lovely lunch, it was time for the first proper zodiac cruise in the far end of Smeerenburg fjord in between the islands Fugelsongen and Klovingen. The weather was very calm which gave us a good opportunity for some adventurous exploration of

the drift ice. Besides the magnificent colours and shapes of the ice we cruised along the coast of Fugelsongen.



(Rose)

From the water, we managed to see one of the largest little auk colonies in Svalbard and enjoy their natural behaviour completely undisturbed by our presence. The little auks nest in-between the rocks and boulders where the eggs and chicks are protected from predators. Another highlight for most of us was the sighting of a little group of puffins on the water.





After everybody was back on board we once again gathered in the lounge for our daily re-cap before dinner and this time also to meet our captain, Alexey Nazarov. When we left Longyearbyen the day before the captain had to be on the bridge to navigate the ship out of the port so after an amazing first day on this trip the captain came to welcome us on board and to toast on a successful voyage. Jan also explained the plans for the next day and we had a couple of small re-caps by Bill and Sara. Bill talked about how to look, see, think and do and Sara explain the difference between various seals and how to identify them.

Dinner was served in the dining room and when we were all enjoying the main course Jan came in and announced the first polar bear sighting. The dining room emptied out very quickly and all of us got a very good look at our first bear. The staff identified the bear as a young male, looking healthy and very relaxed, as he stayed sleeping and stretching on the sheet of ice we found him on.

When we all had a very good look, took enough pictures and maybe got a bit cold, we wandered back inside where we found desert was brought up to the lounge for us to enjoy while we were still in beautiful surroundings. After dinner lectures were postponed to the next day so everybody had the change to enjoy desert, the surroundings, a coffee or a drink from the bar.

What a magnificent first day!





(Rose)

Day 3: 16th of June 2019

'Freedom is not worth having if it does not include the freedom to make mistakes' Mahatma Gandhi

GPS position at 12:00: 79°49,4'N, 010°02,1'E

Air temp.: -1°C
Sea state: calm

Sea temp.: 4°C
Wind: N-4

Swell: 0m
Weather: overcast

After a lovely and quiet night cruising in Smeerenburgfjord, there was a loud 'Bing Bong' around 6.50 in the morning. When most of us were dreaming of different things, there was a call about a polar bear. So, we were told to dress warmly and come to the outside deck to enjoy the beautiful polar bear. The king of the Arctic lay down not far from the ship and looked at us now and then. It was a very special arctic morning. Some still (half) asleep, we all had a good view on the polar bear while the snow came slightly down. As if we were in a Christmas card.



After the polar bear excitement, it was time for breakfast after which Jan explained our plans for the day. The plan was to stay in and around the ice and enjoy the outside scenery as much as we can. Lectures would be put on and announced if there is little to see due to fog for example. And was the polar bear this morning our number two or was it the same one as yesterday? We will never know, but it was good to see it (again).

Because a big ice flow came into Smeerenburg fjord tonight, it was not possible to go straight up North. It took too much time and it is not good to break the ice in the fjords with the ship. So, we sailed back to Sørøya and went up north at the west coasts of Danskøya and Amsterdamøya. Øya means island in Norwegian.



Around 10.30 there was a lecture about polar bears in English by Sara and in German by Tobias. Now everybody knows where to look for and how a polar bear manages to live in the cold. Then it was time for a cup of tea and we all had a delicious lunch.



At 14.00 Jan told more about the plans of the rest of the trip. It is definitely not possible to go further north because of the pack ice. As there was not much live to be seen outside and we had occasional spells of fog, we continued our travels along the ice-edge to the west so we reach the continental shelf. Because the area around the shelf edge is an upwelling area, lots of nutrients come to the surface. There we hope to see more wildlife, such as seals, whales and maybe polar bears.

Because of all the ice around the ship it was a good time to give a lecture about the ice, again in German by Tobias and in English by Iain. After the lecture, we all gathered to make a group picture on the bow of the ship. It was pretty cold so afterwards there was mulled wine and bread and butter pudding with hot vanilla sauce on the aft deck to warm up. Combined with a little snow and sunshine it all was a very good/nice/special experience.



(Rose)

Because of the very thick ice it took a long time to find our way to open water, still beautiful surroundings and quite a few seals in the evening. Due to the extra time spend in the ice we decided to stay in the same area for the night and make our way to the continental shelf the next day. Before dinner there were recaps as normal. After a story by Bill, Andreas told us more about the clean-up Svalbard project and the issues with plastic. Szymon also explained how we can get all the trip details when we are home.





It was a day with everything. Snow, fog, sunshine, polar bear, walruses and the first ivory gulls were spotted. During dinner *Hondius* sailed right into the ice. Very special to have dinner in an environment like this.

Day 4: 17th of June 2019

'Beauty is found in simplicity' Plato

GPS position at 12:00: 79°44,6'N, 009°00,3'E

GPS position at 18:00: 79°34,8'N, 007°07,2'E

Air temp.: 0°C
Sea state: calm

Sea temp.: 4°C
Wind: N-3

Swell: 0m
Weather: snow, medium vis.

Ice, ice, and more ice.



Another expedition day in the pack ice in the north west of Svalbard. We wake up in a white desert. A landscape of black, white and blue. What a sight. Jan calls us all into the lounge after breakfast to talk about the plans for the day and the rest of the voyage. Plans have been changed and we hope to head for the beautiful Hornsund fjord in two days. But for today something special is planned. A landing on the sea ice.

Everyone gets off the ship and can walk a few meters over the ice. What an astonishing thought. Captain Alexey tries to find a suitable ice floe and dock it alongside to *Hondius*. After several attempts, he postpones the landing to after lunch as he first has to find a new ice floe. But luck is not on our side after lunch either. All the ice the ship tries to dock at, breaks into small pieces alongside the vessel, making a landing too risky and we sadly have to refrain from our courageous plans.





(Rose)



(Rose)

But something better pops up (literally). A minky whale has been spotted straight ahead of the ship. There are only few moments that the dining room empties so fast and they are normally connected to the encounter of yellow fluffy animals. But as soon as we arrive at the outer decks, we see nothing. Well not completely. There is ice and there is water, but no trace of an animal. Simply nothing. Minky whales are certainly not the easiest to spot and most of the time just dive again immediately and so it comes that it is gone without most of us even getting a glimpse of it. We begin to head back inside, slightly disappointed. No whale, no bear. What are we doing here? Another announcement. A whale has been sighted. A bowhead whale. Now, this is something special. Once bowhead whales have been roaming the waters around Svalbard in numbers of tens of thousands (estimates are that there were about 60.000 bowhead whales in Svalbard waters), but then the whaling period started in the early 17th century and after an intense whaling period the bowhead whales were basically extinct on Svalbard and remained so for the following centuries. Only very few and rare sightings have been made over the last decades. And now this, a bowhead whale in the distance, slowly swimming between the ice floes. Surfacing and then diving again.

Adam has to postpone his lecture about forgotten explorers several times as the bowhead whale just keeps popping up over the course of the afternoon. And in the late afternoon even the daily recap has to be postponed to after dinner, as we now have four to five bowhead whales swimming in near vicinity to the vessel. Surfacing, diving and showing their tails. What an incredible experience. An experience, which is only topped by Mikels call "It's dinner time". Another wonderful dinner on *Hondius*. But even during dinner the bow head walls pop up and during the after-dinner recap more bowhead walls are seen in the ocean. In total, we saw between 15 and 20 bowhead walls, an extremely rare encounter, as the current Svalbard water population is estimated to be around 300. What a lucky day we had.

Day 5: 18th of June 2019

'The impossible missions are the only ones which succeed' (Jacques Yves Cousteau)

GPS position at 12:00: 78°57,1'N, 012°08,8'E

GPS position at 18:00: 78°57,3'N, 012°07,7'E

Air temp.: 1°C
Sea state: calm

Sea temp.: 6°C
Wind: NNW-3

Swell: 0m
Weather: overcast

We were woken up at 5:30am by the bridge because they spotted a nice pod of beluga whales very close to the coast entering the fjord. All we could see at first were some yellow backs arching out of the water very close to the beach and it seems they were rubbing their bodies on the pebbles to slough off their dead skin. Belugas are called the canaries of the sea because of their nice songs under water. From what Jan told us, the Spitsbergen population is relatively silent. They are often seen in the fjords. As we continued entering the fjord we saw a couple of elusive minke whales. But then we saw another group of belugas on the other side of the fjord. This pod was much larger and probably contained about 150 individuals. It was a treat to see them swim slowly along the shore with their blows showing nicely against the sun.

As we continued we entered the Krossfjorden and we scouted for polar bears. We went all the way to the bottom of the fjord and observed the Lilliehookbreen in all its glory,



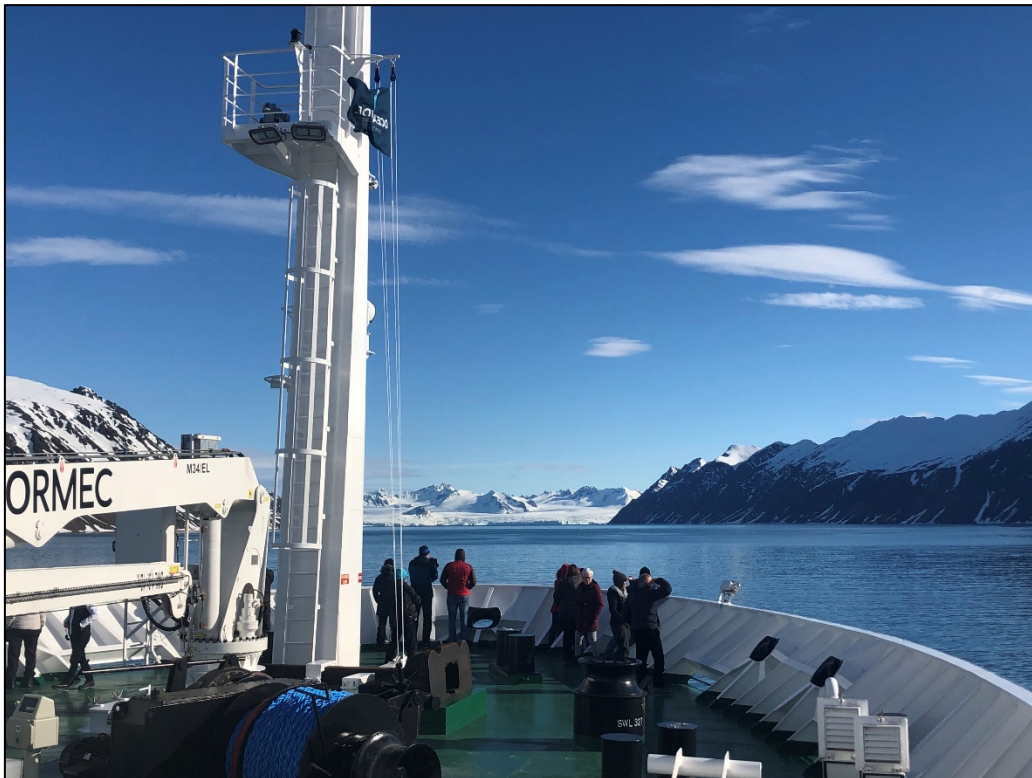
especially with the beautiful sunshine hitting it. It was not long until Jan discovered another pod of belugas swimming at the edge of the glacier. After a nice observation of the glacier and the landscape we headed back out of the fjord and found a couple of minke whales feeding.

Sara and Tobias both gave a lecture on polar bears, in English and German respectively. We headed then towards Kongsfjorden where we planned to do a landing. Both groups of passenger went on shore on two different beaches about a kilometre apart. The site is called Blomstrand halvoya where Mansfield camp was established back in the days in the search for marble. We enjoyed the beautiful



landscape with these pyramid-shaped mountains around the fjord and all the passengers were engaged in hikes of different lengths.

Back on the boat we listened to the recaps on bowhead whales by Sara and on art by Bill. As we were having dinner the ship navigated out of the fjord and headed South. Most of us were still scanning for polar bears and whales. After dinner Dr Spitzenberger gave a talk on the differences and similarities between the Arctic and Antarctica. Many passengers stayed on the bridge until very late scanning for whales as we had beautiful midnight sun.



(Rose)



(Rose)





Day 6: 19th of June 2019

'In the deep space of the sea I have found my moon' Jacques-Yves Cousteau

GPS Position at 12:00: 77°02,6'N/ 015°57,9'E

GPS Position at 18:00: 76°59,1'N/ 016°17,6'E

Air temp.: 4 °C
Sea state: calm

Sea temp.: 6 °C
Wind: NNW-3

Swell: 0m
Weather: sunny



The day dawned upon the mighty *Hondius* while sailing through the entrance into Hornsund, one of the most beautiful fjords of the archipelago. Despite the sun trying its very best, the clouds prevailed. Luckily, the clouds were high enough to allow us an excellent view of the impressive sharp mountains and their glaciers within this magnificent fjord. We were even able to see the highest mountain of south Spitsbergen: the very steep Hornsundtind reaching 1431m!

The plan for the morning? Zodiac cruise in Burgerbukta, to get closer to glaciers in order to scrutinize the smaller details that abound in the ice. One by one, the zodiacs were put the water and the drivers were eagerly awaiting the first trial of *Hondius* shell door – a fantastic invention making boarding easier and more comfortable for everyone.

Not too long after, zodiacs were leaving mother *Hondius* behind in all directions like little spiders leaving big mama's back.



(Rose)



(Rose)





(Rose)







(Rose)



(Rose)

(R



(Rose)



(Rose)



100 years ago, Burgerbukta was completely covered by ice, but the retreating glaciers Paierlbreen and Mühlbacherbreen turned it into two separate bays both called Burgerbukta. The western branch was full of crackling ice and blue icebergs – a symphony of sounds and impressions!

Kittiwakes were flying above and along the ice while zodiacs move through the brash ice towards the glacier front. Tobias and Andreas were in their elements as the geology of this fjord is quite spectacular as well with marbles and shales intercalating and rusty waterfalls originating from the iron content within the rocks.

Back at the ship, lunch was already waiting for us. More food is never a bad thing, surely the chef would agree!

In the afternoon, the Captain was gently bringing the *Hondius* in the Brepollen – a wide bay with an almost completely glacial coastline constituted by both the Horn- and the Storbreen, while guides and guests alike were scanning the shores for Polar Bears. Even though, we did not spot any bears, the scenery was breath-taking. The sun has fought its way through the clouds and the glacier fronts open up a marvellous landscape in front of us. It was hard to stop enjoying it, but eventually, it was time to turn west heading back towards the entrance of Hornsund again. Jan gave us the plans for the following day, followed by Andreas with historic pictures of the retreating glaciers in Hornsund and Marcel speaking about *Hondius* – no, not the ship, but the cartographer.

Just when Michael called us for dinner, a Humpback Whale was spotted in front of the ship. There was no way we would head in for dinner!

It nicely showed its fluke a couple of times before we decided to leave it be and continue on to another one of Chef's fantastic dinners and lectures on glaciers by Andreas and Lawrence thereafter. The lectures did not make it to the end as we arrived at the shelf edge and with that in a whale bonanza!

First, we had a couple of close encounters with more Humpback Whales before two Blue Whales came into the picture and seemed quite interested in *Hondius*. They came very close crossing the bow and showing their fluke. What a fantastic finish of the day!



(Rose)

Day 7: 20th of June 2019

'Knowledge comes, but wisdom lingers' Alfred Lord Tennyson

GPS position at 12:00: 78°31,3'N, 012°35,1'E

GPS position at 18:00: 78°25,499'N, 011°55,345'E

Air temp.: 6°C
Sea state: calm

Sea temp.: 7°C
Wind: NW-4

Swell: 0 m
Weather: excellent



We woke softly to the dulcet tones of Jan's wake-up call, a now familiar morning ritual. Jan let us know it was glorious weather outside; sunshine, blue skies, and barely a whisper of wind. As we peered out of our windows we were greeted by a stunning vista of mountains and glaciers, all reflected perfectly in the deep, silver sea Forlandsundet.



During breakfast Hondius entered St. Jonsfjord and we steamed gently to a position about halfway up this serene little inlet on the west coast of Spitsbergen.

We met for a quick briefing after breakfast and before long we were boarding zodiacs, bound for a landing on the tundra of St. Jonsfjorden. With calm weather and placid seas we were able to board through the shell doors in the side of Hondius; stepping straight into zodiacs. We made two landings; one group heading to the northern shore, and the other to the southern shore. At both sites we saw reindeer, Arctic skua, kittiwakes, fulmars and much more. Several large floes of winter sea ice drifted listlessly through the fjord and we could see seals making the most of the last few days of this sheltered haul out before it succumbs to the summer sun. The shores of the fjord were showing the first signs of the brief Arctic summer; tiny flecks of colour dotted the tundra as the first flowers began to open and we spent a glorious few hours wandering among them. A few groups paused quietly; taking the time to appreciate the sights and sounds of the high-latitudes in a few moments of Arctic silence. This landscape can be so hostile, yet today the fjord was perfectly still, the distant cries of kittiwakes and the exhalations from a foraging seal was all that broke the calm.

We made our way back to the ship just in time for another sumptuous lunch and as we chatted Hondius heaved anchor and made her way to Poolepynten, our goal for the afternoon. Here we split into groups, landing on the sloping shingle spit. We roamed amongst the driftwood and learned that most of it originates from the boreal forests of Siberia. These itinerant logs may have spent years among the tortured pack ice before being released from the frigid clutches of the Arctic Ocean and drifting onto these

remote Arctic shores. In our small groups we tentatively walked towards the tip of Poolepynten. With hushed voices, and gentle movements, we approached a gently sighing mass of russet bodies; more than a hundred walruses hauled out on the beach and dozing peacefully in the warm afternoon sun. We observed them slumbering and digesting, many in poses of total abandon; flippers and tusks stuck in the sand or draped over one another, seemingly without a care in the world.

At the end of the afternoon we were all back aboard, and we headed to the lounge for the customary recap. However, this time, and our last time, we were greeted with a glass of champagne and were joined by Captain Alexey. We toasted to a successful voyage; to a week of exploration, of ethereal icescapes, magnificent fjords, the ever-shifting Arctic light, and a bounty of wildlife surprises.



(Rose)



(Rose)

Day 8: 21th of June 2019

Disembarkation (Longyearbyen)

'Temporis filia veritas' = 'Truth is the daughter of time' (Johannes Kepler)

GPS position: 78°13'738' N/ 015°36'0278'E

Air temp.: 0°C
Sea state: calm

Sea temp.: 4.3°C
Wind: E-2

Swell: 0m
Weather: sunny

It's finally time to say goodbye. On Hawaii they say 'never to say goodbye, but always hello', on Svalbard we say nothing- Norwegians are usually not particularly talkative. However, we hope to see you again in the North or South or somewhere in between...off to new horizons!

On behalf of everyone on board we thank you for travelling with us and wish you a safe journey home!

Your Expedition team ☺



OCEANWIDE
EXPEDITIONS



PHOTOGRAPHY CONTEST 2019

Your chance to win a € 1000 gift voucher for your next polar adventure.

EVERYONE KNOWS A PICTURE IS WORTH A THOUSAND WORDS, BUT DID YOU KNOW THAT YOUR PHOTOS MIGHT NOW ALSO BE WORTH A **€ 1000 GIFT VOUCHER**?

Share your experience!

Did you catch a rare seabird on the fly? Do you have a panorama of the Northern Lights filling the sky? Did you get up close and personal with a penguin? Did you capture a look of awe or wonder on a fellow passenger's face?

If you've been a passenger on any one of our past voyages we want to see your pictures.

You're free to send in as many pictures as you wish. The best pictures are the ones that capture what it's like to take one of our special expeditions to the remote and beautiful ends of the Earth.



PRIZES



€ 1000

GIFT VOUCHER

for Oceanwide Expeditions



€ 500 gift voucher

for Oceanwide Expeditions



€ 250 gift voucher

for Oceanwide Expeditions

UPLOAD YOUR PHOTO AT

WWW.OCEANWIDE-EXPEDITIONS.COM/GALLERY

The size of your photo should be between 2MB and 8MB. Our lucky winners will be contacted by e-mail and Facebook by 31 October 2019. The photography contest runs from 16 May 2019 until 30 September 2019.

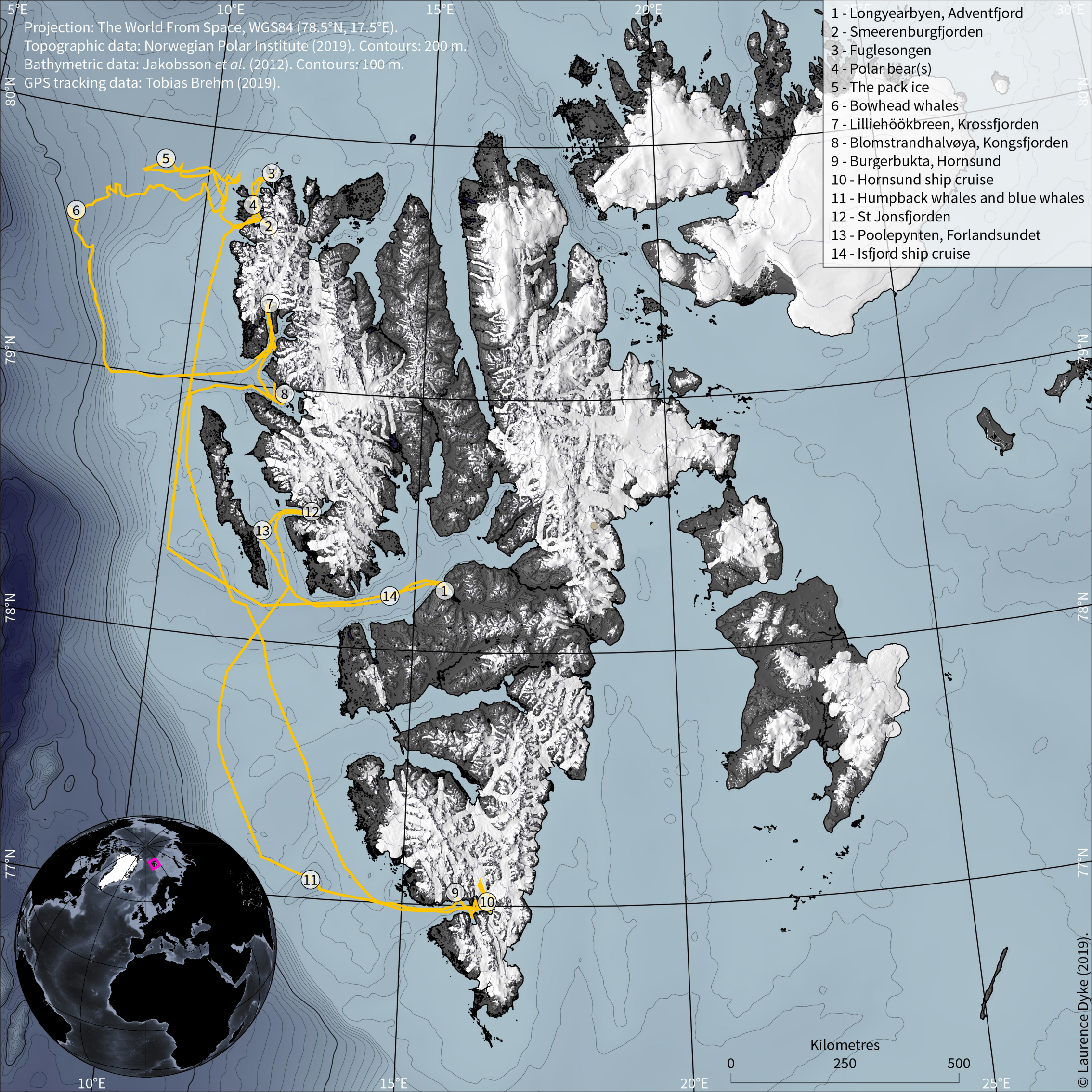
Read the terms and conditions of the contest on www.oceanwide-expeditions.com/page/contest-terms

Birds and Mammals of Svalbard 14-20 June 2019

English Name	Latin	German	Dutch	14-jun	15-jun	16-jun	17-jun	18-jun	19-jun	20-jun
Northern Fulmar	<i>Fulmarus glacialis</i>	Eissturmvogel	Noordse stormvogel	x	x	x	x	x	x	x
Pink-footed Goose	<i>Anser brachyrhynchus</i>	Kurzschnabelgans	Kleine rietgans		x			x	x	x
Barnacle Goose	<i>Branta leucopsis</i>	Weisswangengans	Brandgans		x			x		x
Common Eider	<i>Somateria mollissima</i>	Eiderente	Eidereend	x	x	x		x	x	x
King Eider	<i>Somateria spectabilis</i>	Prachteiderente	Konings eider		x	x				
Long-tailed Duck	<i>Clangula hyemalis</i>	Eisente	Ilseend		x			x		
Rock Ptarmigan	<i>Lagopus mutus hyperboreus</i>	Alpensneehuhn	Alpensneeuwhoen					x		x
Ringed Plover	<i>Charadrius hiaticula</i>	Sandregenpfeifer	Bontbekplevier							x
Purple Sandpiper	<i>Calidris maritima</i>	Meerstrandläufer	Paarse strandloper					x		x
Ruddy Turnstone	<i>Arenaria interpres</i>	Steinwälder	Steenloper					x		x
Arctic Skua	<i>Stercorarius parasiticus</i>	Schmarotzerraub-möwe	Kleine jager		x	x		x	x	x
Long-tailed Skua	<i>Stercorarius longicaudus</i>	Falkenraubmöwe	Kleinste jager					x		
Great Skua	<i>Stercorarius skua</i>	Skua	Grote jager		x			x		x
Glaucous Gull	<i>Larus hyperboreus</i>	Eismöwe	Grote Burgemeester		x	x	x	x		x
Great black-backed Gull	<i>Larus marinus</i>	Mantelmöwe	Grote mantelmeeuw							x
Kittiwake	<i>Rissa tridactyla</i>	Dreizehenmöwe	Drieteenmeeuw	x	x	x	x	x	x	x
Ivory Gull	<i>Pagophila eburnea</i>	Elfenbeinmöwe	Ivoormeeuw			x			x	
Arctic Tern	<i>Sterna paradisaea</i>	Küstenseeschwalbe	Noordse stern		x	x	x	x	x	x
Brunnich's Guillemot	<i>Uria lomvia</i>	Dickschnabellumme	Dikbekzeekoet		x	x	x	x	x	x
Black Guillemot	<i>Cephus grylle</i>	Gryllteiste	Zwarte zeekoet		x	x	x	x	x	x
Little Auk	<i>Alle alle</i>	Krabbentaucher	Kleine alk		x	x	x	x	x	x
Puffin	<i>Fratercula arctica</i>	Papageitaucher	Papegaaiduiker		x	x	x	x	x	
Snow Bunting	<i>Plectrophenax nivalis</i>	Schneeammer	Sneeuwgor		x	x		x		x

English	Latin	German	Dutch							
Walrus	<i>Odobenus rosmarus</i>	Walross	Walrus		x	x	x			x
Bearded seal	<i>Erignathus barbatus</i>	Bartrobbe	Baardrob		x	x		x	x	
Ringed seal	<i>Phoca hispida</i>	Ringelrobbe	Ringelrob				x			x
Harp seal	<i>Pagophilus groenlandicus</i>	Sattelrobbe	Zadelrob		x	x	x			
Hooded seal	<i>Cystophora cristata</i>	Klappmütze	Klappmuts				x			
Common /Harbour seal	<i>Phoca vitulina</i>	Seehund	Gewone zeehond		x					
Minke Whale	<i>Balaenoptera acutorostrata</i>	Zwergwal	Dwergvinvis				x	x		
Blue Whale	<i>Balaenoptera musculus</i>	Blauwal	Blauwe vinvis						x	
Humpback Whale	<i>Megaptera novaeangliae</i>	Buckelwal	Bultrug						x	
Bowhead whale	<i>Balaena mysticetus</i>	Grönlandwal	Groenlandse walvis				x			
White-beaked Dolphin	<i>Lagenorhynchus albirostris</i>	Weisschnauzendelphin	Witsnuitdolfijn						x	
Beluga	<i>Dephinapterus leucas</i>	Weisswal	Beloega					x		
Polar Bear	<i>Ursus maritimus</i>	Eisbär	Ijsbeer		x	x				

Arctic Fox	<i>Alopex lagopus</i>	Polarfuchs	Poolvos		x			x		
Spitsbergen Reindeer	<i>Rangifer tarandus platyrhynchus</i>	Svalbard Renntier	Rendier					x		x
Short tailed Vole	<i>Microtus agrestis</i>	Erdmaus	Aardmuis					x		





Ice Service

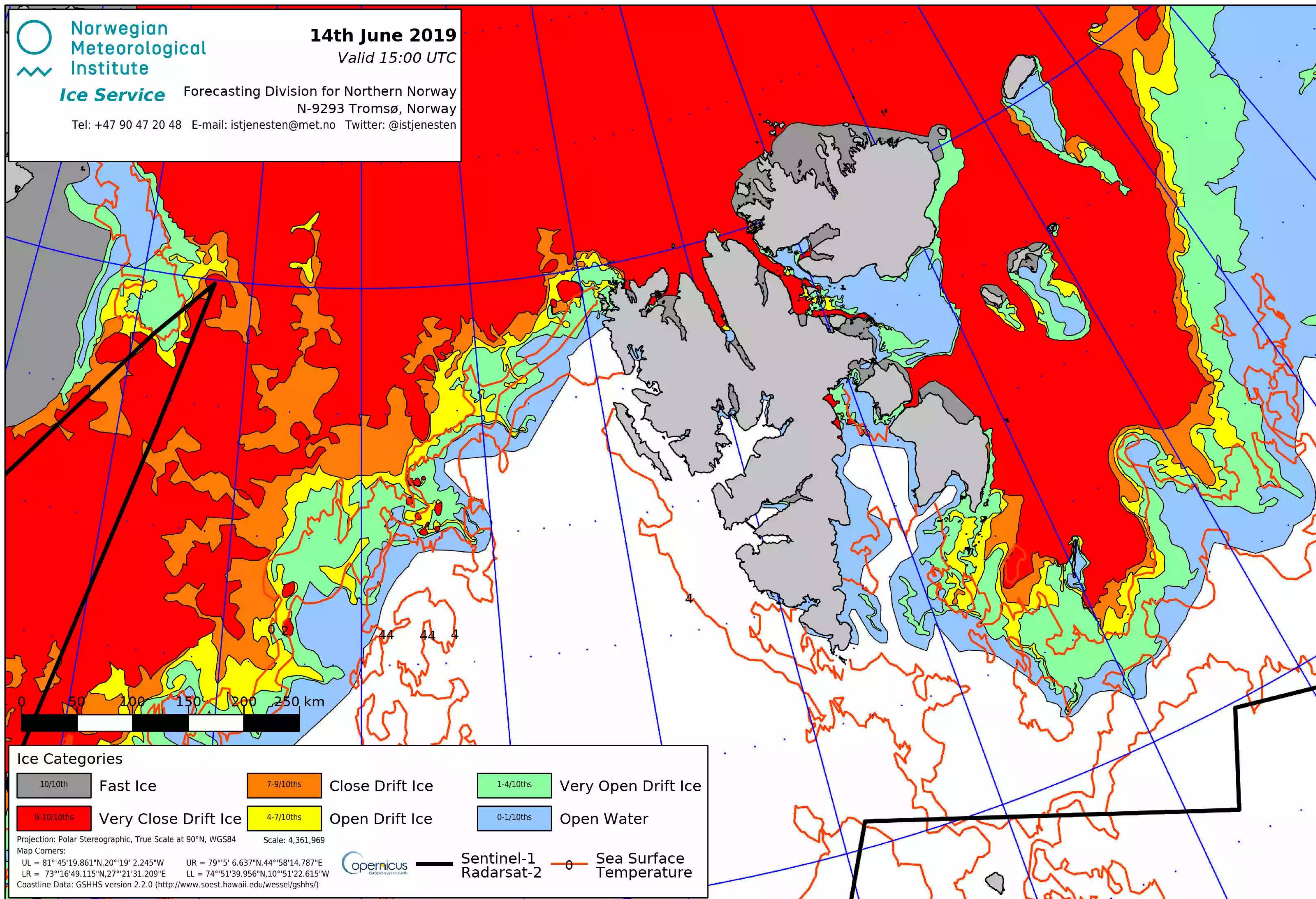
Forecasting Division for Northern Norway

N-9293 Tromsø, Norway

Tel: +47 90 47 20 48 E-mail: istjenesten@met.no Twitter: @istjenesten

14th June 2019

Valid 15:00 UTC



Jan Belgers - Expedition Leader



Jan Belgers was born in 1965 in the Netherlands and lives in Rotterdam. He has been working as a professional outdoor guide and expedition leader for many years now. Travelling and guiding in wildernesses all over the world are his passion.

His work as a guide has brought him from the high mountain ranges of the Himalayas and Andes to the extreme latitudes of Spitsbergen and Antarctica.

His first steps in the Polar Regions he made in 1992 as a student, when he participated in an international winter expedition to the

Weddell Sea in Antarctica.

Since then he has joined several (research) expeditions to remote places in the northern and southern oceans. Jan feels at home on the sea, due to his background in marine biology, and is one of the expedition leaders on our sailing ship, the Noorderlicht. He lectures on natural history, biology and polar history and is a polar literature fanatic.

Adam Turner, FRGS - Assistant Expedition Leader



Adam was brought up in countryside of Essex, England. He began sailing at the age of 9 and began working on the local river aged 12 before leaving school.

By 16 he had a small fishing boat and was working on boatyards and taking tourists to see the local seal colonies as well as helping out on the local Lifeboat.

Adam then joined HM Forces and was posted to Northern Ireland and in the UK, he also served in Kenya as a boat operator. In 2002 Adam joined the Police and spent several years on a specialist unit working across the

UK with his search dog Charley.

Since being a young lad Adam had dreamt of working in the Antarctic like his Uncle had done in the late 1980's, and in 2014 Adam left the Police to work as Boating Officer for British Antarctic Survey at King Edward Point, South Georgia where he spent just over a year.

Adam studied at Middlesex University and often gives lectures on history, in 2017 he was elected as a Fellow of the Royal Geographical Society, and he now works as guide and Consultant.

Adam holds a commercial masters certificate and instructs in several marine disciplines, he enjoys diving, climbing, kayaking and outdoor activities.

Iain Rudkin, FRGS - Assistant Expedition Leader



A love for travel alongside a passion for mountains, wild places and photography has allowed Iain to fulfil many a childhood dream.

Equally at home in his native Scottish mountains as in the polar regions, Iain has been fortunate enough to be able to combine his enthusiasm for the wilderness with a real-life job - a privilege not lost on him!

This 'work' has led him to over winter three times in Antarctica, climb unclimbed peaks as well as getting covered head to toe in penguin guano...it's not all glamorous!

Tobias Brehm - Expedition Guide



Tobias grew up in the Bavarian Alps spending as much time as possible out and about to observe and learn from and about Earth and Nature. He likes to share this passion with interested people and has facilities to explain these fascinating mechanisms and phenomena.

With a B.Sc. in Geosciences and a M.Sc. in Economic Geology, Tobias' experience mainly originates from his work as an exploration geologist within the mining and metals industry. He has worked on projects in the US, Australia, Iceland, Greenland and all across Canada with a focus on remote, helicopter-based fieldwork within the Yukon Territory and northern British Columbia; in areas that not many people have a

chance to see and enjoy.

When telling about his work and experiences, Tobias realized numerous times that there are many misconceptions in regards to geology and that geologists are generally not trying well enough to reach out to the 'general public'. In addition, many people seem to be 'disconnected' from nature in some ways. This led him to join the Oceanwide Expeditions team in 2014 to share his love and knowledge about Earth and Nature, especially of Polar Regions, with others.

Throughout his geological career, Tobias has travelled all across the world experiencing many different cultures and environments. He has been to Alaska and the "Lower 48" (i.e. Yellowstone National Park), to nearly all of Canada, Australia & Tasmania, Peru, Iceland, to nearly all of Europe and to desert countries like the Sultanate of Oman. However, he feels most comfortable in rugged, mountainous terrain of Polar Regions.

At home, he spends his time climbing mountains and exploring the mystical spheres of caves or abandoned mines.

Miriam Vermeij - Expedition Guide



During her youth she travelled a lot with her parents and sister in Europe. Miriam developed an interest in nature at a young age and lots of time was spent outdoor, exploring local insects and plants. Following her interests she followed an environmental science study and got a degree with a specialisation on soil pollution. Nowadays she is a self-employed environmental planning officer.

From 1999 the travelling outside Europe started. With her husband Marcel, she travelled all around the world. In 2006 they went to the Antarctic and there the passion for the poles started. The first contact with the

Arctic was in 2011 and after another trip in 2013 she came back as field assistant on the Dutch polar expedition (SEES) in 2015 and to the Dutch polar station in Ny Alesund in 2016. Since 2017 she has been guiding in the Arctic, followed by the Antarctic in 2018.

In Holland Miriam is a nature guide since 2003. First in the local forest and since 2008 also in one of the largest national parks in Holland: De Biesbosch. There she is guiding school kids and adult groups on walking and boating trips. She is also part of the board that manages the local forest.

Marcel Paul - Expedition Guide



From his teens Marcel has been a keen traveller. After camping and trekking with friends, he led groups on trekking's to Austria, Switzerland, England and Scotland. His own travels over the last 20 years brought him to all 7 continents together with his wife Miriam. With his interest in (exploration) history and as keen hobby photographer, the Polar Regions have always been drawing his attention.

At his first arrival to Svalbard in 2011 and a second trip in 2013, he felt connected with the remoteness of the place and the dynamics of the polar nature. At that time the idea started to grow to become a polar guide and give up a job that is keeping him indoor most of the time.

When the Dutch organised a scientific polar expedition to Edgeøya it seemed the perfect opportunity to gain more knowledge from the area by working with the scientists. He joined the expedition in 2015 as field assistant and participated in various fields of research. In 2016 he went to the Dutch polar station in Ny-Alesund, again as field assistant.

Living next to one of Europe's biggest wetland reserves, the Biesbosch in Holland, weekends are often spent on his boat with his camera close by. Since 2017 he has been guiding in the Arctic, followed by the Antarctic in 2018.

Sara Jenner - Expedition Guide



For as long as Sara could remember she has had a passion for travel and searching for the wildest and most remote places on earth.

Back in the UK when she was only 10, she remembers trading in her favourite pink bicycle for the money to start her travel fund. Every birthday and Christmas she added a little more in the kitty and finally, at 18 she realised her dream of diving at the Great Barrier Reef! At that point the travel addiction was born!

Ever since Sara has been travelling the globe in search of wild and remote places and has spent many months volunteering on wildlife conservation projects in a bid to help some of our most iconic and endangered species.

Sara's love of wildlife and the great outdoors has taken her to all seven continents and she has travelled extensively in the polar regions including the Antarctic Peninsula, Falklands, South Georgia, Spitsbergen, Greenland, Iceland, Baffin Island and Canadian High Arctic. Returning to the UK, Sara used this knowledge to work in the travel industry as a polar specialist for several years, until the travel bug hit again, when she decided to swap life on the land for a life at sea and joined the Oceanwide Expedition Team in 2016.

Sara is a keen wildlife photographer and when she is not wrapped up warm in the polar regions she enjoys working as a photographic guide in Botswana, on the beautiful Chobe River and Okavango Delta, so really has a life of two halves.

Szymon Niezabitowski - Expedition guide



Szymon was born in 1993 in Cracow, Poland. He studied Biology and Geography in Cracow where he received graduate degree in "Faculty of Biology and Earth Sciences".

His graduate thesis was about Volcanic Soils on Iceland.

After he finished his studies he worked for the Institute of Systematics and Evolution of Animals, where he was a guide and keeper of exotic animals.

From the earliest years of his life he is a passionate naturalist with a special interest in the geography and the wildlife of the higher latitudes.

Rosalie Steffen - Expedition Guide



Rosalie (Rose) is originally from Germany but is currently commuting between southern Spain and Svalbard. She grew up traveling around the world in search of pristine nature and marine creatures. Her passion for the ocean lead to a degree in marine biology and oceanography in Wales as well as New Zealand and a master's degree in applied marine geophysics. Besides, she also studies scientific journalism.

Her main interests lie in the field of climate change, marine mammals and glaciology as well as sea ice. She enjoys traveling, the outdoors, water sports (sailing, surfing, diving)

and adventures. Among her recent adventures is an Atlantic crossing on a sailing vessel. She lived half a year on Hawaii and half a year on an isolated Asian island where she dedicated her life to diving and sea turtle conservation. Besides, she also spent several months in Tonga and Indonesia. In addition, she spent a year in Australia where she worked as a snorkelling guide at the Great Barrier Reef and guided horseback tours through the wilderness of western Australia. Over the past years Rosalie has been working as an expedition guide, zodiac driver and lecturer in the polar regions, but her heart belongs to the crystal-clear waters of the South Pacific.

She enjoys meeting people from different backgrounds with whom she can share her knowledge with. Rosalie almost loves coffee as much as the underwater world and is more than happy to spend a coffee break with you onboard.

Laurence Dyke - Expedition Guide



Laurence is from Cornwall in the far southwest of the UK and grew up on the coast, never far from the water and boats. Laurence has a background as a geographer with a special focus in glaciology, a choice inspired by seeing a glacier up close for the first time in the Austrian Alps.

For the last 7 years he has worked in science, both in the UK and Denmark, working to understand how and why huge glacier systems have changed in the past. Laurence first visited the Arctic in 2010 whilst undertaking research for his PhD and was immediately captivated by the wild

landscapes of the high latitudes. His subsequent research has taken him on numerous expeditions to remote areas of Greenland, Svalbard, and Arctic Canada.

Laurence is also a passionate advocate for polar science, when time allows, he produces videos and articles about research from Greenland and the wider Arctic. Laurence lectures in glaciology and geography.

Bill Smith - Expedition Guide



“Super Bill” as described by his colleagues and clients, is a fun-loving outdoor pursuits enthusiast, cartoonist and former Head of Art and Design Education at Ellon Academy Aberdeenshire.

Bill joined Oceanwide Expeditions as a guide when Plancius was built and over the last few years has become addicted to the Polar Regions.

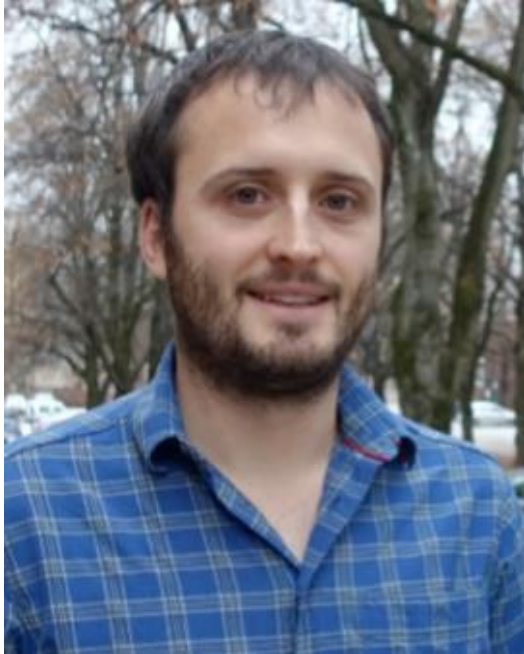
He has 55 years’ experience of Art and Design Education and Design for Industry. Plus 55 years leading and instructing a range of outdoor pursuits.

He has the following qualifications: -

- Royal Yachting Association Advanced Powerboat Instructor
- Royal Yachting Association Senior Sailing Instructor
- Royal Yachting Association Windsurfing Instructor
- British Canoe Union Open Canoe Instructor
- British Association of Ski Patrollers National Patroller
- British Association of Ski Patrollers First Aid Trainer
- Snow Sport Scotland Ski leader
- President of the Assynt Highland Games
- Honorary member of Assynt Crofters Trust
- Member of the Federation Internationale des Patrouilles de Ski

Bill delights in producing humorous cartoon logs of each trip.

Andreas Alexander - Expedition Guide



Andreas started his career as one of the “bad guys”: As a mechanical engineer on fossil power plant construction sites.

Not completely convinced by that he continued in materials research to finally follow his fascination for polar research.

The direction was clear during the parallel studies in mechanical engineering and geology: North. Scientific drilling in the caledonic mountains in Sweden, volcanoes in Alaska and finally Svalbard.

Andreas lived almost three years there and studied Arctic Geology and Geophysics at the

University Centre in Svalbard. Hereby he could regularly be found crawling and climbing in and under glaciers for his research.

Meanwhile Andreas is working as a PhD Research Fellow at the University of Oslo and spends his time in Norway, Svalbard, Greenland, Japan and Alaska. When he is not standing in the lecture room, sitting in his office or doing fieldwork in the Arctic, he works as an Expedition Guide in the Arctic and Antarctic. A job, where he shares his polar fascination with his guests and gladly talks about the life in polar sciences, glaciers and geology.

North Spitsbergen, Polarbear Special

June 14 - June 21, 2019

Day 1, June 14, Friday: Boarding and departure from Longyearbyen

WELCOME ABOARD!

For the arriving passengers: luggage will be delivered to your cabin as soon as possible. Please check to make sure you have received all your luggage!

*** * Tea and coffee are always available in the lounge bar on deck 5 * ***

- | | |
|--------------|---|
| ±17.30 (TBA) | Welcome briefing in the lounge (deck 5). Expedition leader Jan and hotel manager Michael will introduce you to life on board the Hondius. This will be followed by a mandatory 'Safety at Sea' briefing and abandon ship drill. |
| ±19.00 (TBA) | Departure of the Hondius. Please stay off the bridge during these operations. |
| 19.30 | Dinner is served in the dining room (deck 4). |
| ±21.15 (TBA) | Welcome meeting. The Captain invites all passengers for a toast in the bar (deck 5). Expedition leader Jan will introduce the expedition staff and talk about our plans. |

The first part of the evening we will sail through the large Isfjord towards the open sea. Then we head north, along the outer coast of Spitsbergen, towards the far north-west. We stay on the outside of the long and narrow island of Prins Karls Forland, as the passage between this island and Spitsbergen is too shallow. The total distance will be around 180 nautical miles (1 nm. is around 1,9 kilometres so about 330 km) and it will take us approximately 15 hours to reach our destination: Raudfjorden.

Please note that tonight we will be sailing into the open sea. Take your seasickness medication before you really feel the movements of the vessel. Make sure that all your belongings are put away safely and that doors and drawers in your cabin are tightly closed. Walk slowly on the ship, always use one hand for yourself and one for the ship and beware of your fingers because of doors jamming!

(TBA) = To Be Announced

North Spitsbergen, Polarbear Special

June 14 - June 21, 2019

Day 2, June 15, Saturday: Raudfjorden - Hamiltonbukta

07.00	Wake-up call.
07.30 – 08.30	Breakfast buffet in the dining room (Deck 4), for one hour.
09.00	Compulsory meeting in the observation lounge (deck 5). Please join the expedition team in the lecture room to hear the safety and environmental guidelines
12.30	Lunch
+/-14.00 – 18.00	Depending on the ice conditions, possible landing and/or zodiac-cruise in the Raudfjorden.
18.30	Recap in the lounge
19.00	Dinner

Later in the morning, we arrive in the Raudfjorden. As the fjord is possibly still in the ice, we will make plans after arrival. We might go for a zodiac cruise along Hamiltonbukta and land somewhere in the fjord

North Spitsbergen, Polarbear Special

June 14 - June 21, 2019

Day 3, June 16, Sunday: The pack ice

07.30	Wake-up call.
08.00 – 09.00	Breakfast.
12.30	Lunch
18.30	Recap and briefing in the bar.
19.00	Dinner is served.

Today we will head into the pack ice. As we do not know what this will bring us, no further plans have been yet.

The pack ice is rather unpredictable and the ice edge not a straight line, but a labyrinth of different types of drift ice; from very open drift ice to very close drift ice.

The wildlife on the pack ice can also be very patchy, meaning that in some areas there is a lot of wildlife and in others not so much. It is not to be predicted where the wildlife can be found so we will be searching while in the ice.

During the day we might offer lectures, depending on the amount of wildlife sightings during the day. You will be informed.

North Spitsbergen, Polarbear Special

June 14 - June 21, 2019

Day 4, June 17, Monday: Another day in the pack ice

07.30	Wake-up call.
08.00 – 09.00	Breakfast.
12.30	Lunch
18.30	Recap and briefing in the bar.
19.00	Dinner is served.

Today we will stay another day in the pack ice. As we do not know what this day will bring us, no further plans have been made yet.

The pack ice is rather unpredictable and the ice edge not a straight line, but a labyrinth of different types of drift ice; from very open drift ice to very close drift ice.

The wildlife on the pack ice can also be very patchy, meaning that in some areas there is a lot of wildlife and in others not so much. It is not to be predicted where the wildlife can be found so we will be searching while in the ice.

During the day we might offer lectures, depending on the amount of wildlife sightings during the day. You will be informed.

North Spitsbergen, Polarbear Special

June 14 - June 21, 2019

Day 5, June 18, Tuesday: Kongsfjorden - Blomstrandhamna

07.00 Wake-up call.

07.30 – 08.30 Breakfast.

Ships cruise through the Kongsfjorden, towards the glaciers Kongsbreen and Kongsvegen.

12.00 Lunch

14.00 Landing and Zodiac cruise in Blomstrandhamna

17.30 Back at the ship. Sailing towards Hornsund

19.00 Dinner

We want to spend the whole day in the beautiful Kongsfjorden. This is a fjord of outstanding beauty, with large glaciers and beautiful mountains.

In the morning we plan a ships cruise through the fjord.

After lunch we will go for a combined landing and zodiac cruise near the Blomstrandbreen.

In the evening we head of again, towards the southwest of Spitsbergen: Hornsund. In the evening there are good chances of whales when we sail out Kongsfjorden.

North Spitsbergen, Polarbear Special

June 14 - June 21, 2019

Day 6, June 19, Wednesday: Hornsund

07.00	Wake-up call.
07.30-08.30	Breakfast.
08.30	Meeting in the lounge
09.30	Zodiac cruise in Burgerbukta
12.00	Last zodiac back
12.30	Lunch.

In the afternoon we will cruise with the ship through the Hornsund, in search of wildlife and see the large glaciers.

18.30	Recap
19.00	Dinner

In the evening we will sail north again, towards the Forlandsundet and Prins Karls Forland

North Spitsbergen, Polarbear Special

June 14 - June 21, 2019

Day 7, June 20, Thursday: St. Johns fjorden and Poolepynten

07.00	Wake-up call
07.30 – 08.30	Breakfast
+/-09.00	Landing in St. Johns fjorden
12.00	Last zodiac back
12.30	Lunch

After lunch and in the evening, from 15.00 until 22.00, you can settle your account at the reception

+/-14.00	Zodiac landing at Poolepynten
17.00	Last zodiac back
18.30	Farewell meeting in the lounge
19.30	Dinner

Today will be our last expedition day and we have planned 2 landings. In the morning we will go for hike in St. Johns fjorden.

In the afternoon, we plan to land at Poolepynten. Poolepynten is located on the large island of Prins Karls Forland and here we hope to see Walrus, that often haul out on the beach here. The landing will be a landing, just to see the Walrus.

In the afternoon and evening, from 15.00 until 22.00, you can settle your ship's account at the reception.

At 18.30 we would like to invite everybody for a farewell drink in the bar.

The ship will proceed towards Longyearbyen, where we plan to arrive during around 22.00.

North Spitsbergen, Polarbear Special

June 14 - June 21, 2019

Day 8, June 21, Friday: Disembarkation – Farewell.

07.00	Wake-up call
07.30	Please put your heavy luggage in the corridor near your cabin, at the latest at 07.30 . The crew and staff will carry it down to the pier.
07.30 – 08.30	Breakfast
Please leave your key-card holder at the reception.	
+/-08.30 (TBA)	Time to say goodbye! All passengers leave the ship via the gangway.

Buses have been arranged to take you to Longyearbyen or the airport.

Passengers with an afternoon flight put their luggage into a luggage truck. Please check that you take all your luggage from the pier and drop it at the right vehicle. The luggage will be transported to the airport, where you need to pick it up at the truck near the entrance of the airport.

- For the 02.20 early morning flight, the bus will pick you up at 12.30. Please put your luggage in the corridor after dinner and at the latest at 22.00. You do not need an extra label for the luggage.
- For the **13.25 flight** the bus will pick you up at the drop-off place at the Butikken at 11.45 and drive you to the airport. You do not need an extra label for the luggage.
- Passengers going to a hotel put their luggage into the bus. You will be dropped in the town centre near the Svalbard Butikken. Please attach label nr 1 on your luggage.
- Passengers with their own transport, also attach label nr 1 on your luggage.

Dear passengers, we enjoyed having you on board. Have a nice and safe journey home. Hopefully we meet again somewhere, sometime, in the Polar regions!

Farewell!