



# In Search of Polar Bears and Pack Ice

on board

**m/v Hondius**

**June 28<sup>th</sup> - July 5<sup>th</sup> 2019**



The MV *Hondius* was built in 2019 in Brodosplit, Croatia, as an expedition vessel for Oceanwide Expeditions. *Hondius* is 107.60m long, 17,60m wide and has a maximum draught of 5.3m and has an exceptionally high Ice class of PC6, a top speed of 15 knots and 3 diesel generators. The *Hondius* sails on LSMGO. Now the ship is sailing as a 176-passenger vessel with 83 cabins. Our beautiful, modern vessel carries 369m<sup>3</sup> of fresh water and has a water plant producing 70m<sup>3</sup> per day. In many ways, the *Hondius* is the perfect vessel for a true polar adventure!

# Captain Alexey Nazarov

and his international crew of 69

including

First Officer:	<b>Mindaugas Oginskas</b>	[Lithuania]
Staff Officer:	<b>Toni Salo</b>	[Finland]
Second Officer:	<b>Diederik Scholten</b>	[The Netherlands]
Third Officer:	<b>Igor Nazarov</b>	[Russia]
Chief Engineer:	<b>Sebastian Alexandru</b>	[Romania]
Hotel Manager:	<b>Michael Frauendorfer</b>	[Austria]
Assist. Hotel Manager:	<b>Dejan Nikolic</b>	[Serbia]
Head Chef:	<b>Ralf Barthel</b>	[Germany]
Sous Chef:	<b>Gaurav Bawa</b>	[India]
Ship's Physician:	<b>Robert Kneen</b>	[Great Britain]

and

Expedition Leader:	<b>Raphaël Sané</b>	[France]
Assist. Expedition Leader:	<b>Iain Rudkin</b>	[Great Britain]
Assist. Expedition Leader:	<b>Adam Turner</b>	[Great Britain]
Expedition Guide:	<b>Sara Jenner</b>	[Great Britain]
Expedition Guide:	<b>Omblin Chabasseur</b>	[France]
Expedition Guide:	<b>Jerry Zhao</b>	[China]
Expedition Guide:	<b>Laurence Dyke</b>	[Great Britain]
Expedition Guide:	<b>Bill Smith</b>	[Scotland]
Expedition Guide:	<b>Miriam Vermeij</b>	[The Netherlands]
Expedition Guide:	<b>Marcel Paul</b>	[The Netherlands]
Expedition Guide:	<b>Meike Sjoer</b>	[The Netherlands]
Expedition Guide:	<b>Szymon Niezabitowski</b>	[Poland]
Expedition Guide:	<b>Melissa Scott</b>	[USA]

**We welcome you on board!**

# Day 1: 28<sup>th</sup> June 2019

## Embarkation, Longyearbyen

GPS position at 0800: 78°13'.62 N, 015°38'.50 E

Wind: SE 2 Sea State: Calm Weather: Overcast

Air Temp: 3 °C Sea Temp: 8 °C

Finally, the much-awaited departure day was upon us, for many of us today signified the culmination of a lifelong dream. The day started brightly in Longyearbyen, but unfortunately the sunshine was short lived and was quickly exchanged for clouds and a light breeze. However, this did little to dampen our spirits and the sense of excitement as to what the forthcoming adventure would hold.



Since Longyearbyen's foundation as a coal-mining settlement in 1906 by John Munro Longyear, it has been the starting point for many historic and pioneering expeditions. The town has a

permanent population of around 2,200 residents but this number increases significantly during the summer with the arrival of thousands of cruise ship tourists ready to explore the archipelago of Svalbard.

At 16:00 we gathered at the small pier where members of the Expedition team took care of the luggage and handed out lifejackets ready for the short zodiac ride out to the middle of the fjord where the *m/v Hondius* was anchored.

We were greeted at reception by the hotel team who checked us in and showed us to our cabins. After which, most of us either headed to the outside decks to enjoy the views or to the bar for a warming cup of tea or coffee where we chatted excitedly with other passengers



and staff about the upcoming days. At 17:30 we were asked to gather in the lounge for a welcome briefing from the Expedition Leader, Raphaël and Michael the Hotel Manager. We were then briefed by the Chief Officer, Mindaugas, on ship safety and how to prepare for abandon ship procedures, should the worst incident happen on board. Soon afterwards it was time for the mandatory safety drill, so we collected our SOLAS orange life jackets and immersion suits from our cabins and

gathered in the designated muster stations. After an electronic roll-call to ensure everybody was there, we were then escorted outside to take a look at the lifeboats, but were left confident that we would have no reason to do this again in the next 7 days!

With the mandatory safety briefing completed we lifted the anchor and set sail through Isfjord. Shortly afterwards we were invited to the dining room to enjoy the first of many delicious meals on board, prepared by head chef Ralf and his team. There was a real buzz in the dining room, as we got to know each other and talked about our hopes and aspirations for this voyage.



As we headed to open water after dinner there was plenty of birdlife to be spotted around the ship, so many people dressed warmly and headed back outside. The keen birders amongst the group were pleased to see their first Atlantic Puffins of the voyage along with lots of Black Guillemots, Little Auks and Northern Fulmars.

At last, tired from our travels, we retired to our cabins to rest and prepare for the first full day of our polar adventure.

## Day 2: 29<sup>th</sup> June 2019

### Smeerenburgfjorden and Magdalenefjord

**GPS position at 0800: 79°37'.67 N, 011°28'.10 E**

**Wind: NE 3 Sea State: Ice Weather: Overcast**

**Air Temp: 3 °C Sea Temp: 5 °C**

After a smooth first night on board, we were woken up at 07:30. As we enjoyed our first buffet breakfast on board, the ship sailed towards the beautiful surroundings of Smeerenburgfjorden.

After breakfast it was time for everybody to attend the mandatory AECO briefing. During the briefing Raphaël explained the goals and objectives of AECO, which stands for Association of Arctic Expedition Cruise Operators". In brief, it tells everybody what to do and not to do when traveling around the Arctic to make sure the delicate eco system is disturbed as little as possible therefore, it is important



that all passengers receive this information before doing a landing or zodiac cruise. Assistant Expedition Leader, Adam, followed on with the zodiac safety briefing, despite not being the



highlight of the trip these briefings are extremely important.

After the briefing, everybody was called down to Deck 3 to collect rubber boots from the boot room, it can sometimes be challenging to find the correct size for everyone but the Expedition staff were on hand to assist. Just as the last boots were being distributed, the first polar bear of the voyage was spotted. As anticipated, this caused great excitement and everyone wrapped up warmly and dashed outside. The bear could be seen in the distance resting on the fast ice, which in line with AECO guidelines we are not allowed to break through so we viewed it from a non-obtrusive distance. Despite only being a few pixels in our cameras, it was very humbling to see this beautiful creature on this expanse of ice and a very promising start to the voyage. As we retreated from the ice to let the bear rest in peace there was another exciting announcement, belugas! We gained good views of these white whales as they swam close to the shoreline, our second true Arctic species of the morning.



After lunch it was time for our first landing in Magdalenefjord. The first half of the passengers went towards a walrus haul out on the Western entrance on Gullybukta (Gully bay), with hushed voices and slow movements, we approached the mass of bodies. With a closer



vantage point we could see there was about 20 walrus in total, resting peacefully in the warm afternoon sun. We observed them slumbering and digesting, flippers and tusks stuck in the sand or draped over one another, seemingly without a care in the world. This group of guests continued with a zodiac cruise along the front of Gullybreen (Gully glacier), there was plenty of birds to be spotted and a many guest saw a small group of Harbour Seals hauled out on the shoreline.



The other half of the ship went to the opposite side of the fjord for a landing first, where the guides had marked out a safe perimeter in which we could wander around freely. Beautiful green peaks with little auks flying high above and a rocky coastline bathed in sunshine, made for a very enjoyable afternoon. After about an hour and a half the two groups swapped to ensure everyone had the same experience.



At 18.30 we gathered once more in the lounge for our daily re-cap before dinner. Bill talked about how to look, see, think and do' and Sara spoke about seal identification. After that it was time to meet our captain, Alexey Nazarov. When we left Longyearbyen the day before the captain had to be on the bridge to navigate the ship

out of the port so after an amazing first day on this trip the Captain came to welcome us on board and toast the success of the rest of the voyage.

## Day 3: 30<sup>th</sup> June 2019

### Pack Ice

**GPS position at 0800: 79°56'.91 N, 010°54'.52 E**

**Wind: NE 5 Sea State: Ice Weather: Fog/overcast**

**Air Temp: -1 °C Sea Temp: -3 °C**

After another gentle night of sailing we woke up in sunny weather, but unfortunately the fog was not far away. Around 07:00 the first ice smashed against the bow of the ship, a good wake-up call for the people who were still in bed. As we enjoyed breakfast Raphaël announced there was a walrus on an ice floe very close to the ship, so we strained our necks to get a closer view from our tables. We cruised passed the walrus very slowly so as not to disturb it.



Despite a thick band of fog on the horizon, some sharp eyes from the bridge spotted a polar bear in the distance. While we slowly approached in the direction of the walking bear, we passed a group of swimming harbour seals in a gap in the ice floe. The *Hondius* finally came to a halt so as to allow the bear to approach us at its own pace for the finally few hundred meters. Suddenly he got sight or scent of the seal that was resting on the ice on the starboard side of the ship.

The polar bear crossed in front of the ship, to get closer to the seal and made the finally





approach by swimming to avoid being spotted by its prey. Occasionally it popped its head up from between the ice floes to mark the position of the seal. Unfortunately, the mist thickened and the stalking technique of the bear became harder to follow. Nonetheless, most were still able to get a glimpse of the incredible action that was unfolding right before us, even if it was not particularly photogenic. Fortunately for the seal, but unfortunately for the bear, the seal





spotted the bear just in time and darted back into the water for safety. For the bear there was nothing left than to continue the search and we saw it walking away in the fog.

Through the fog and beautiful ice plates we make our way further North and the weather began to clear up. At 11.47 it was bright sunshine and we crossed the 'line' of 80° North, the first time in the young history of *Hondius*. This was quite some achievement considering how much ice there was further South in comparison to the previous year at the same time.



After lunch it was decided we would travel West to try and find some shallower waters where seals are more likely to be found, in a hope that we can get a glimpse of their predator once again: The King of the Arctic. Unfortunately, the fog quickly thicken and we had to abort this plan and change course to a more southerly position.



At the entrance to Raudfjorden the visibility was significantly better and the Captain found a large piece of ice that would hopefully facilitate a landing. The scout boat tried to find a good 'harbour' to use and after two attempts they found the perfect place. We were shuttled in small groups from the ship to the ice floe. This landing gave us a much-needed chance to stretch our legs, and of course plenty of photos were taken to capture this unique moment-not many people can say they have walked on sea ice.

Back on board it was nearly time for dinner so recap was postponed till afterwards. Recap consisted of Raphaël explaining plans for tomorrow, all weather dependent off course, a quick introduction to the Birds of Svalbard from Melissa, a bit more information about Beluga whales from Sara and Bill concluded with a few thoughts about Arctic whaling and sealing.



To ensure a quiet and undisturbed night of sleep for all it was decided to stay out of the ice overnight. Most retired to their beds very happy, the day in the pack ice had exceeded most expectations, to see a polar bear try and hunt a seal was extremely rare and something most will only ever experience on a television documentary back home.



**Day 4: 1<sup>st</sup> July 2019**

**Fjortende Julibukta**

**GPS position at 0800: 79°47'.91 N, 010°22'.30 E**

**Wind: ENE 6/7 Sea State: Ice Weather: Overcast**

**Air Temp: +1 °C Sea Temp: +1 °C**



Another day dawned, the plan was a landing at Fuglesangen to climb across the boulders to get close to the thousands of Little Auks nesting there, but it was obvious, even to the less nautical passengers, that this was not going happen. The wind was gusting to 60 knots at times and blowing at a steady Beaufort Force 7. Plan B was

enacted, two lectures were delivered on board, Melissa with an interesting talk on polar bears and Iain explaining his great love...glaciers and sea ice, as *Hondius* voyaged south to the more sheltered waters of the Fjortende Julibukta in Krossfjord.



To maximise the experience two activities were planned, a Zodiac cruise to observe puffins, the stunning landscape and glacier and a landing whereby the passengers went given the freedom to walk along the base of the towering mountains to the edge of the glacier. Crumbling scree slopes of sedimentary rock encroached onto the edge of the shore-line. On the far shore an enormous lateral moraine cascaded from the mountains and extended the length of the fjord. Staff provided a safety cordon on the outer limits of the operational area, an exercise known as a perimeter landing and



passengers were able to relax and walk about exploring and photographing, at their own pace.

The area was rich in wildlife, passengers reported sightings of Common Guillemot, Brunnich's Guillemot, Little Auks, Puffin, Barnacle Geese, Common Eider, King Eider, Purple Sandpiper, Snow Bunting and an Ivory Gull.



The glacier calved several times with ice cascading into the water with a booming crash during the afternoon sending waves surging across the bay. During the afternoon the wind dropped and the weather moderated.



However, the highlight of the day occurred late as during Bill's lecture Art of the Sea, the meaning of the sea in paintings, half-way through the lecture, as he was in full-flow, there was a mass exodus from the room as the loudspeakers announced that we had just encountered a swimming bear. Wow! The bulwarks of the ship were then lined with excited passengers 'looking, seeing and thinking' as they followed the bear with their long-lensed



cameras and binoculars. The bear swam across the bay and then ambled slowly along the shore before climbing up the moraine in the direction of Fjortende Julibukta. This was a great sighting to add to the already impressive list accumulated throughout this voyage.

This had been another action packed Oceanwide Expeditions day as the ever-flexible expedition team maximised every opportunity to create memorable experiences



## Day 5: 2<sup>nd</sup> July 2019

### Kongsfjord and Ny-Alesund

**GPS position at 0800: 80°02'.31 N, 010°59'.91 E**

**Wind: NE4/5 Sea State: Swell 1m Weather: Fog**

**Air Temp: +1 °C Sea Temp: +4 °C**

We were roused from our slumber by the now familiar bing-bong, followed by the gentle tones of Raphaël. He informed us that we had entered into Kongsfjorden (The Kings Fjord) and that the weather was variable. Strong gusts of wind were coursing through the fjord,

ruffling the water into flurry of spray. We would make our way further in to the fjord, in search of shelter for the morning.



However, this plan was interrupted by the rushed announcement that a polar bear had just been spotted on land, our fourth of the trip! Captain Alexey took *Hondius* in close to the coast, making the most of the good charts in this area of Kongsfjorden. As we approached, the bear stretched and yawned, before slowly rising and ambling across the tundra of Blomstrandhalvøya. As we observed through binoculars, telescopes and camera lenses we

saw her approach a group of reindeer browsing on the slopes. The sudden appearance of a large apex predator sent them into a panic and they fled for the hills. The bear paid them no heed, knowing she could not hope to outrun a reindeer; although much smaller and with short legs, reindeer have excellent endurance and can easily escape a pursuing bear. This bear was in great condition; chubby and healthy with glorious coat of cream fur. Before long though she had entered the waters of the fjord and we took this as a cue to depart, bears are vulnerable when swimming, and following them can cause stress. A great start to the day, and all before breakfast!



After breakfast we found ourselves in the inner-reaches of Kongsfjorden, anchored in relative shelter near Ossian Sarsfjellet, a rocky oasis protruding from the huge glaciers in the eastern end of the fjord.

Our goal was a zodiac cruise along Kronebreen, one of the largest, and arguably the most impressive of the glaciers in Kongsfjorden. Two scout zodiacs were lowered to assess the conditions, after twenty minutes the staff returned, soaking wet and with a report on the conditions;



it was too windy and too wavy for a zodiac cruise, it simply was not safe. Instead there was an impromptu lecture in the lecture theatre. Appropriately enough it was on glaciers and delivered by Laurence, our in-house glaciologist. We learnt how glaciers are formed, how they behave, and saw some examples of the more unusual

glaciers around the world. We also learned about their colossal power and how they can gouge out spectacular landscapes and trigger large earthquakes.



During lunch *Hondius* relocated to Ny Ålesund, the small settlement nestled on the southern shore of Kongsfjorden. After a short, but blustery zodiac ride we were ashore and free to



roam around this unusual little town. As Marcel had explained the previous night, we found ourselves in a world of 'northernmosts'; the northernmost town, train, post box, shop, and so on. After perusing the shop and spending some time in the beautiful museum, we headed out with our guides to explore the terrain around the town. A few of us took a leisurely walk to the airship mooring mast; here we learnt from Iain

about the heroic, and often tragic, Arctic expeditions which had left from this very spot. A larger contingent of bird watchers set off to the west, taking a large loop around some of the lakes in the hope of seeing some special avian life. The long hikers headed straight up the hill behind the town, aiming to get a view over the bay. They were not disappointed; from their vantage-point on the ridge the fjord was laid out like a map. They had spectacular views over hanging cirque glaciers nearby, the larger valley glaciers in the distance, and, towering over it all, the triplicate



peaks of the Tre Kroner, named after the ancient Norse kingdoms of Nora, Dana, and Svea (Norway, Denmark, and Sweden).



As we returned to *Hondius* we were greeted with a surprise, tonight's dinner would be an Arctic barbecue! The strong winds and occasional rain meant that we would eat in the dining



room, but as free drinks flowed and we reflected on our trip thus far, a very festive atmosphere ensued. Just as we were thinking about dancing, we were interrupted by an announcement from Raphael – some very large whales had been spotted. As we made our way onto the decks under the clearing evening skies, we could see the sea was broken

by the huge backs of several fin whales, and even better, some gorgeous blue whales, the largest animal on the planet. We spent more than an hour in the company of these gentle giants, watching them circle and fluke as they feasted on a bountiful Arctic buffet beneath the waves. Our encounter peaked with a serenade of powerful blows just meters from the ship as a pair of blue whales cruised alongside us. Finally, it was time to bid them farewell, and we turned, heading north once more, bound for the pack ice and the kingdom of the polar bear.







**Day 6: 3<sup>rd</sup> July 2019**

## **Pack Ice**

**GPS position at 0800: 80°01'.32 N, 010°59'.95 E**

**Wind: NE 4-5 Sea State: Ice Weather: Fog**

**Air Temp: 1 °C Sea Temp: 4 °C**

Well, after the excitement of our “whale soup” the evening before, we awoke again above 80 degrees north for another full day in the pack ice. Fog blanketed the ice but the team was vigilant on the bridge scanning as far as possible for bears. Along the way we had some wonderful sightings of harp seals – one group being close to 50 or more animals. It was fantastic to see them porpoising along, sometimes upside-down. Some had the beautiful harp shaped coloration on their backs while others still wore their spotted coat. Here and there we also found some bearded seals and it wasn't long before we found an area where several groups of walrus were resting on the ice as we passed by.



The ice conditions were quite varied throughout the day and the fog added a bit of mystery to what we might find emerging from the haze as the ship navigated through this polar world. It was quite impressive to see the ship breaking what looked like some fairly thick ice while the shapes and colors of the pieces fueled our imaginations. It was interesting to note that in some areas, the pans did not seem to have been impacted by the fierce winds of the

previous 2 days and were quite large and flat while in other areas the ice was a jumble of broken blocks. In these areas we found lots of what the team called “dirty ice.” Most of this discolored ice comes from the algal and microorganism colonies that live in the bottom layer of the annual ice. It is usually a yellow-ish color and makes it very hard to determine if something in the distance is a sleeping bear or more of this exposed layer in the ice.



At last, the team on the bridge started looking really hard at yellow spot quite a distance from the ship trying to determine if it was that which we sought – the “king” of the arctic or just another blob of dirty ice. When we were finally close enough to make the call – we were all very relieved to hear the announcement – it was our bear!! It was sleeping on a lump of snow-covered ice and had not moved in many hours. Our captain maneuvered us closer and we were able to get a wonderful view of this magnificent creature. It stretched and yawned then decided to get up and investigate this huge thing that appeared in its world. Come to find out – it was the “queen” of the arctic that we had found. Many guests were wondering how we know whether it is a male or female so the naturalists helped to explain some of the characteristics to look for. It is not always easy as an immature male can look a bit like a mature female as he has not yet filled out in the head and neck so one has to look more closely. She decided to wander a bit closer to the ship to investigate but was a little shy and easily startled so suddenly became nervous and began to





move away. As much as we all wished she would stay and play, we watched as she wandered off into her icy world in search of more familiar things. It was fantastic to learn that this female was in very good condition and given how fat she was, it is almost certain that she has potential babies waiting to emerge sometime this winter. What a beautiful sighting and memory to have as we left the ice and began making our way south again.



## Day 7: 4<sup>th</sup> July 2019

### St Jonsfjord and Alkhornet

**GPS position at 0800: 78°30'.90 N, 012°45'.82 E**

**Wind: SE 1 Sea State: Calm Weather: Partly Cloudy**

**Air Temp: 4 °C Sea Temp: 8 °C**

At 7:00 am the sweet French voice of Raphaël swept through the speakers once more to wake us up with the joyous news that the weather looked fabulous outside for our landing in St Jonsfjord, clear skies, 7 degrees Celsius, a gentle breeze and flat calm seas. After filling our empty stomachs with another tasty breakfast, we started our first landing and zodiac operations for the day. The expedition team decided to split the group in half and do two separate landings, one on the north side at Gjertsenodden and a second one on the south side of the fjord in Copper Camp.



Both landing sites offered us a huge range of plants and flowers to observe, breathtaking scenery and a variety of bird life, including the



much sought after Ptarmigan. A few lucky groups also got to see two young Arctic Foxes at close range.

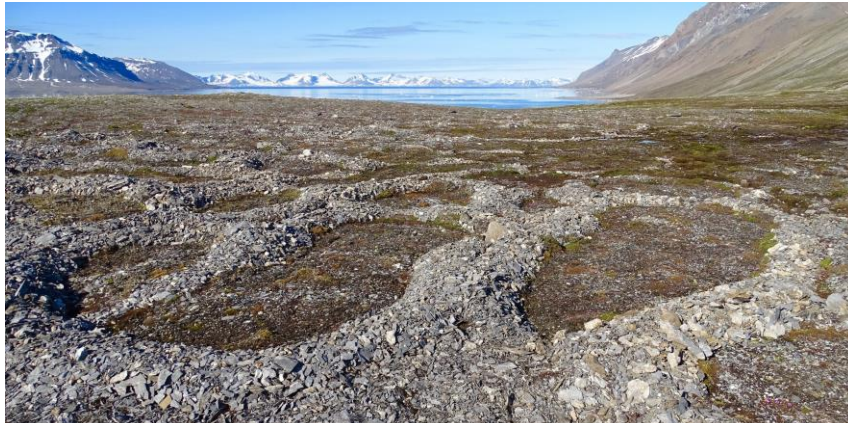
A few brave souls decided to make the most of the glorious weather and stripped off to take a dip in the icy water before heading back to the ship for a much-needed hot shower and another delicious buffet lunch.



Over lunch we sailed to Alkhornet, which is situated at the entrance to the small fjord Trygghamna on the northern side of Isfjord. It was the perfect place to end our adventure as many refer to Trygghamna as 'Spitsbergen in a nutshell' because the area hosts many of the features that first attract visitors to the Arctic, stunning mountain and glacier scenery, rich tundra, reindeer, Arctic foxes, bird cliffs and historical relics and Alkhornet



delivered on all accounts. As per the morning, we split in to two groups and were allowed to free roam the designated areas, which were marked out by our armed expedition team. Reindeer and flowers were abundant at both locations but at one of the sites it was some very cute fox cubs that stole the show, posing for hundreds of photos for the keen photographers. It was fantastic to have the chance to wander and explore at our pace and many people took the opportunity to sit and enjoy the beautiful scenery drenched in warm afternoon light whilst contemplating all the wonderful things we have seen and done over the past few days.



© Sara Jenner

Back on board, having returned our trusty Muck boots, we were invited to the lounge for a farewell cocktail with the Captain and Expedition team, a chance to toast a very successful voyage and share our memories with our fellow passengers. The staff had compiled a selection of their photos from the trip which played in the background as a great reminder of all the wonderful things we had seen. After long applause for crew and staff members we

headed downstairs for our last dinner on board the *Hondius*.

For those who had already done their packing, they headed to the bar for a few celebratory drinks after dinner. As it was clear many of us had caught the 'polar bug' and were already thinking about their next possible polar adventure Adam and Sara showed a short slideshow about Falklands, South Georgia and Antarctica to further whet appetites.

## Day 8: 5<sup>th</sup> July 2019

### Longyearbyen

GPS position at 0800: 78°14'.61 N, 015°32'.60 E

**Wind: S4/5 Sea State: 2 Weather: Overcast**  
**Air Temp: 3 °C Sea Temp: 8 °C**

After arriving in Longyearbyen late last night, those of us that had the early flight boarded the zodiacs and headed towards the pier waving farewell to the staff, crew and our new friends that remained onboard.

Raphaël woke the rest of us at 7:00am, shortly followed by Michael inviting us to breakfast. On reflection, it seemed odd that so much could fit into a week; the fantastic bear sightings, the whale encounters, the walrus and other seals, the pack ice and of course not to forget the landings and zodiac cruises. Breakfast was the ideal time to talk with fellow passengers and reflect on an action packed, wildlife filled week.

As the calls came over the tannoy we said our goodbyes to all onboard and made our way across to the pier via zodiacs, which by now we had become familiar with. The staff helped us get out of the boat and made sure we had our luggage and then we were off.

Some had time in Longyearbyen, some of us straight to the airport but all with memories of a lifetime adventure made onboard the *Hondius*.



**Thank you all for such a wonderful voyage, for your company,  
good humour and enthusiasm. We hope to see you again in the future,  
wherever that might be!**

**Total distance sailed on our voyage: 912 nautical miles**

**Furthest North: 80°04'.32 N, 011°09'.39 E**

**On behalf of Oceanwide Expeditions, Captain Alexey Nazarov,  
Expedition Leader Raphaël Sané, Hotel Manager Michael Frauendorfer  
and all the crew and staff, it has been a pleasure travelling with you.**





# PHOTOGRAPHY CONTEST 2019

Your chance to win a € 1000 gift voucher for your next polar adventure.

EVERYONE KNOWS A PICTURE IS WORTH A THOUSAND WORDS, BUT DID YOU KNOW THAT YOUR PHOTOS MIGHT NOW ALSO BE WORTH A **€ 1000 GIFT VOUCHER**?

## Share your experience!

Did you catch a rare seabird on the fly? Do you have a panorama of the Northern Lights filling the sky? Did you get up close and personal with a penguin? Did you capture a look of awe or wonder on a fellow passenger's face?

If you've been a passenger on any one of our past voyages we want to see your pictures.

You're free to send in as many pictures as you wish. The best pictures are the ones that capture what it's like to take one of our special expeditions to the remote and beautiful ends of the Earth.



## PRIZES



**€ 1000**

**GIFT VOUCHER**

for Oceanwide Expeditions



**€ 500 gift voucher**

for Oceanwide Expeditions



**€ 250 gift voucher**

for Oceanwide Expeditions

UPLOAD YOUR PHOTO AT

**[WWW.OCEANWIDE-EXPEDITIONS.COM/GALLERY](http://WWW.OCEANWIDE-EXPEDITIONS.COM/GALLERY)**

The size of your photo should be between 2MB and 8MB. Our lucky winners will be contacted by e-mail and Facebook by 31 October 2019. The photography contest runs from 16 May 2019 until 30 September 2019.

Read the terms and conditions of the contest on [www.oceanwide-expeditions.com/page/contest-terms](http://www.oceanwide-expeditions.com/page/contest-terms)

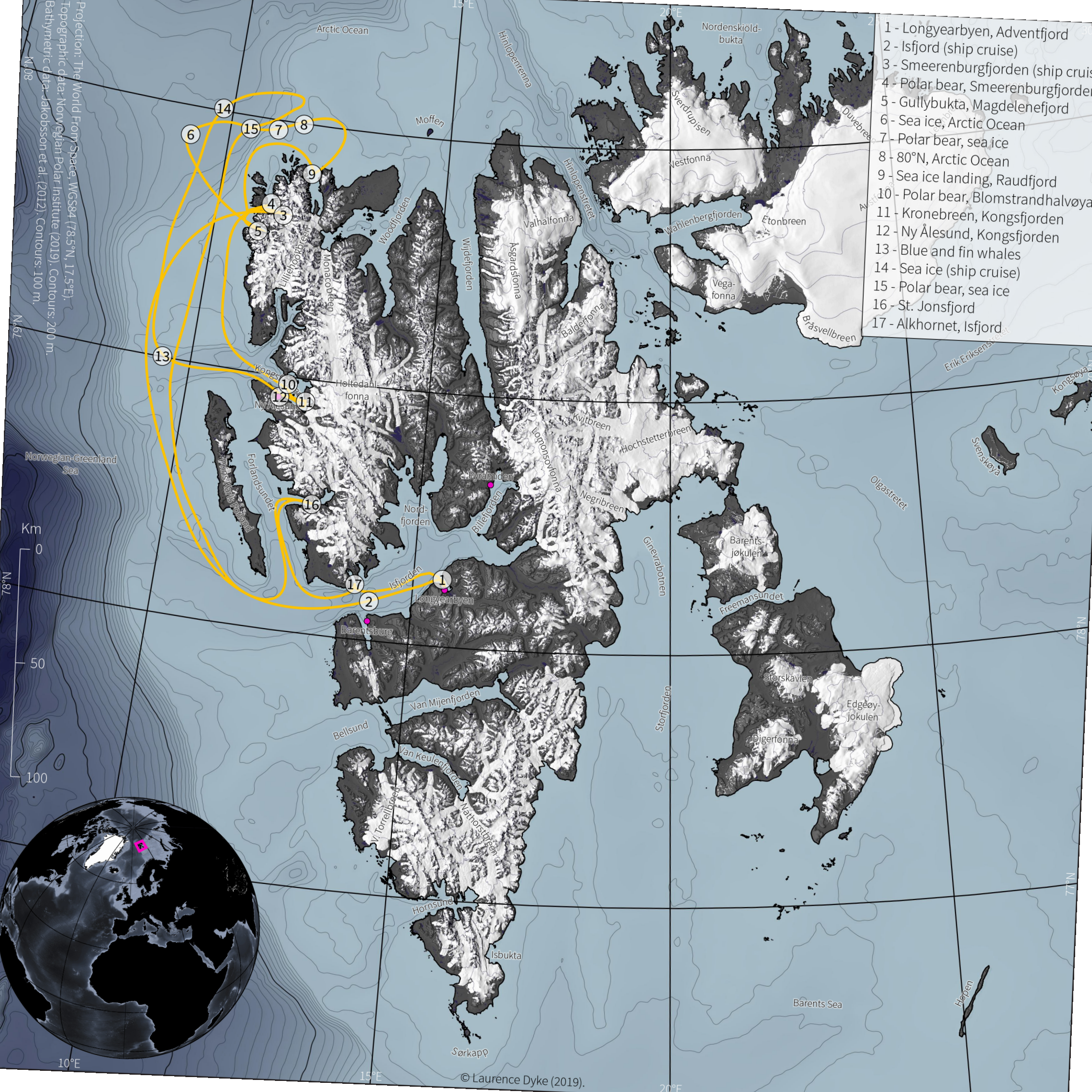
Birds and Mammals of Svalbard 28 June - 04 July 2019

English Name	Latin	German	French	中文	Dutch	28-06	29-06	30-06	01-07	02-07	03-07	04-07
Great Northern Diver	<i>Gavia immer</i>	Eistaucher	Plongeon Imbrin	白嘴潜鸟	Ijsduiker							
Red-throated diver	<i>Gavia stellata</i>	Sterntaucher	Plongeon catmarin	红喉潜鸟	Roodkeelduiker		X	X	X	X	X	
Northern Fulmar	<i>Fulmarus glacialis</i>	Eissturmvogel	Fulmar boréal	北方暴风鹱	Noordse stormvogel	X	X	X	X	X	X	X
Pink-footed Goose	<i>Anser brachyrhynchus</i>	Kurzschnabelgans	Oie à bec court	粉脚雁	Kleine rietgans							
Barnacle Goose	<i>Branta leucopsis</i>	Weisswangengans	Bernache nonnette	白颊黑雁	Brandgans				X	X		
Brent Goose	<i>Branta bernicla</i>	Ringelgans	Bernache cravant	黑雁	Rotgans		X					
Common Eider	<i>Somateria mollissima</i>	Eiderente	Eider commun	欧绒鸭	Eidereend	X	X	X	X	X	X	X
King Eider	<i>Somateria spectabilis</i>	Prachteiderente	Eider à tête grise	王绒鸭	Konings eider				X	X		
Long-tailed Duck	<i>Clangula hyemalis</i>	Eisente	Harelde boréale	长尾野鸭	Ilseend					X		
Rock Ptarmigan	<i>Lagopus mutus hyperboreus</i>	Alpenschneehuhn	Lagopède alpin	岩雷鸟	Alpensneeuwhoen							X
European Golden Plover	<i>Pluvialis apricaria</i>	Goldregenpfeifer	Pluvier doré	欧洲黄金鸭	Goudplevier							
Sanderling	<i>Calidris alba</i>	Sanderling	Bécasseau sanderling	三趾鹬	Drieteenstrandloper							
Pectoral Sandpiper	<i>Calidris melanotos</i>	Graubruststrandläufer	Bécasseau tacheté	斑胸滨鹬	Gestreepte strandloper							
Purple Sandpiper	<i>Calidris maritima</i>	Meerstrandläufer	Bécasseau violet	紫滨鹬	Paarse strandloper				X	X		X
Common Redshank	<i>Tringa totanus</i>	Rotschenkel	Chevalier gambette	红脚鹬	Tureluur							
Ruddy Turnstone	<i>Arenaria interpres</i>	Steinwälzer	Tournepieyre à collier	红翻石鹬	Steenloper					X		X
Grey Phalarope	<i>Phalaropus fulicarius</i>	Thorshühnchen	Phalarope à bec large	灰瓣蹼鹬	Rosse franjepoot							
Red-necked Phalarope	<i>Phalaropus lobatus</i>	Odinshühnchen	Phalarope à bec étroit	红领瓣足鹬	Grauwe franjepoot							
Pomarine Skua	<i>Stercorarius pomarinus</i>	Spatelraubmöwe	Labbe pomarin	中贼鸥	Middelste jager		X	X				
Arctic Skua	<i>Stercorarius parasiticus</i>	Schmarotzerraub-möwe	Labbe parasite	短尾贼鸥	Kleine jager		X	X	X	X	X	X
Long-tailed Skua	<i>Stercorarius longicaudus</i>	Falkenraubmöwe	Labbe à longue queue	长尾贼鸥	Kleinste jager					X		
Great Skua	<i>Stercorarius skua</i>	Skua	Grand Labbe	大贼鸥	Grote jager			X			X	
Black-headed Gull	<i>Larus ridibundus</i>	Lachmöwe	Mouette rieuse	红嘴鸥	Kokmeeuw		X		X			
Common/Mew Gull	<i>Larus canus</i>	Sturmmöwe	Goéland cendré	海鸥	Stormmeeuw							
Glaucous Gull	<i>Larus hyperboreus</i>	Eismöwe	Goéland bourgmestre	北极鸥	Grote Burgemeester		X	X	X	X	X	X
Kittiwake	<i>Rissa tridactyla</i>	Dreizehenmöwe	Mouette tridactyle	三趾鸥	Drieteenmeeuw	X	X	X	X	X	X	X
Ivory Gull	<i>Pagophila eburnea</i>	Elfenbeinmöwe	Mouette blanche	象牙鸥	Ivoormeeuw		X	X	X	X	X	
Arctic Tern	<i>Sterna paradisaea</i>	Küstenseeschwalbe	Sterne arctique	北极燕鸥	Noordse stern	X	X	X	X	X	X	X
Common Guillemot	<i>Uria aalge</i>	Trottellumme	Guillemot de Troil	崖海鸦	Zeekoet		X	X	X	X	X	X
Brunnich's Guillemot	<i>Uria lomvia</i>	Dickschnabellumme	Guillemot de Brünnich	厚嘴海鸦	Dikbekzeekoet		X	X	X	X	X	X
Black Guillemot	<i>Cepphus grylle</i>	Gryllteiste	Guillemot à miroir	白翅斑海鸽/黑海鸽	Zwarte zeekoet	X	X	X	X	X	X	X
Little Auk	<i>Alle alle</i>	Krabbentaucher	Mergule nain	小海雀	Kleine alk		X	X	X	X	X	X
Puffin	<i>Fratercula arctica</i>	Papageitaucher	Macareux moine	海鹦	Papegaaiduiker		X	X	X	X	X	X
Snow Bunting	<i>Plectrophenax nivalis</i>	Schneeammer	Bruant des neiges	雪鹀	Sneeuwgor		X	X	X	X	X	X

MAMMALS

English	Latin	German	French	中文	Dutch	28-06	29-06	30-06	01-07	02-07	03-07	04-07
Walrus	<i>Odobenus rosmarus</i>	Walross	Morse	海象	Walrus		X	X			X	
Bearded seal	<i>Erignathus barbatus</i>	Barrobbe	Phoque barbu	髯海豹	Baardrob		X	X			X	X
Ringed seal	<i>Phoca hispida</i>	Ringelrobbe	Phoque marbré	环斑海豹	Ringelrob		X					

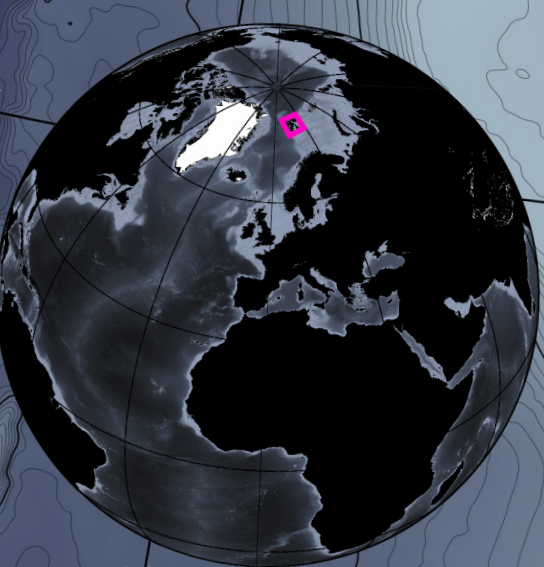


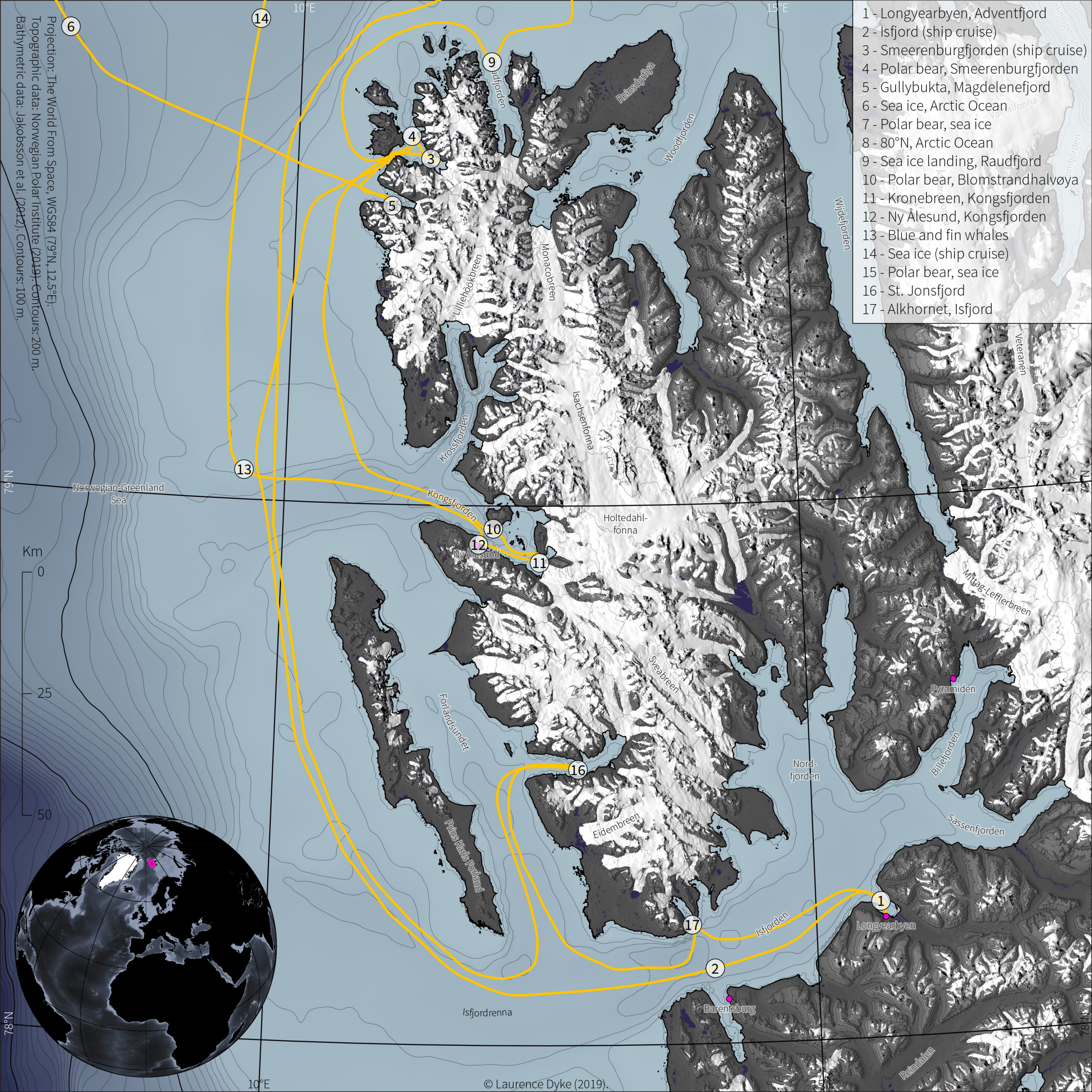


- 1 - Longyearbyen, Adventfjord
- 2 - Isfjord (ship cruise)
- 3 - Smeerenburgfjorden (ship cruise)
- 4 - Polar bear, Smeerenburgfjorden
- 5 - Gullybukta, Magdalenefjord
- 6 - Sea ice, Arctic Ocean
- 7 - Polar bear, sea ice
- 8 - 80°N, Arctic Ocean
- 9 - Sea ice landing, Raudfjord
- 10 - Polar bear, Blomstrandhalvøya
- 11 - Kronebreen, Kongsfjorden
- 12 - Ny Ålesund, Kongsfjorden
- 13 - Blue and fin whales
- 14 - Sea ice (ship cruise)
- 15 - Polar bear, sea ice
- 16 - St. Jonsfjord
- 17 - Alkhornet, Isfjord

Projection: The World From Space, WGS84 (78.5°N, 17.5°E).  
 Topographic data: Norwegian Polar Institute (2019). Contours: 200 m.  
 Bathymetric data: Jakobsson et al. (2012). Contours: 100 m.

Norwegian-Greenland Sea



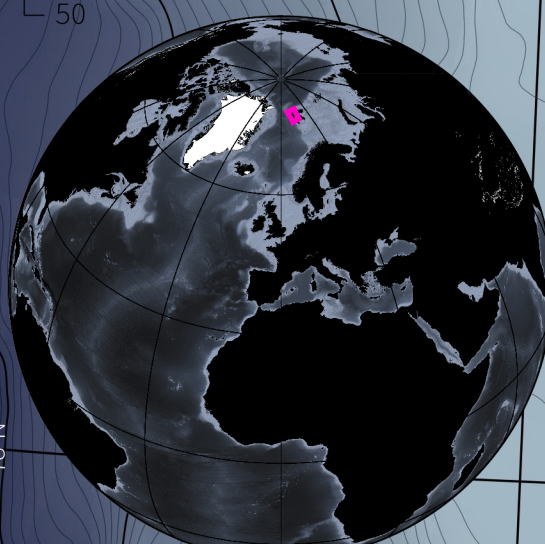


- 1 - Longyearbyen, Adventfjord
- 2 - Isfjord (ship cruise)
- 3 - Smeerenburgfjorden (ship cruise)
- 4 - Polar bear, Smeerenburgfjorden
- 5 - Gullybukta, Magdelenefjord
- 6 - Sea ice, Arctic Ocean
- 7 - Polar bear, sea ice
- 8 - 80°N, Arctic Ocean
- 9 - Sea ice landing, Raudfjord
- 10 - Polar bear, Blomstrandhalvøya
- 11 - Kronebreen, Kongsfjorden
- 12 - Ny Ålesund, Kongsfjorden
- 13 - Blue and fin whales
- 14 - Sea ice (ship cruise)
- 15 - Polar bear, sea ice
- 16 - St. Jonsfjord
- 17 - Alkhornet, Isfjord

Projection: The World From Space, WGS84 (79°N, 12.5°E).  
 Topographic data: Norwegian Polar Institute (2019). Contours: 200 m.  
 Bathymetric data: Jakobsson et al. (2012). Contours: 100 m.

Norwegian-Greenland Sea

Km  
 0  
 25  
 50



---

## Raphaël Sané - Expedition Leader

---



Raphaël has always been a nature passionate. He is interested in the observation and study of all living organisms from flower to whales but his main field of interest are vertebrates (birds, mammals, reptilians and amphibians). Graduate in hydrobiology, he has always been involved in naturalist associations either as volunteer or employee.

In parallel, he took part in several scientific or adventure expeditions in the Polar Regions (Siberia, Greenland, Canada and Svalbard), the steppes of Kazakhstan and Morocco and the Peruvian jungle. In 2003, he carried out an old dream: cycling through Latin America for 20 months.

Raphaël first came on board a cruise ship as lecturer in 2000. Since then, he has been embarking either as naturalist guide or expedition leader on many destinations (the Arctic, Antarctica and the tropics). When he is not navigating, Raphaël carries out personal projects (field assistant for nature conservation projects, photography, edition, journeys, etc.) or just enjoy life at home in Provence.

---

# Iain Rudkin - Assistant Expedition Leader

---



A love for travel alongside a passion for mountains, wild places and photography has allowed Iain to fulfil many a childhood dream.

Equally at home in his native Scottish mountains as in the polar regions, Iain has been fortunate enough to be able to combine his enthusiasm for the wilderness with a real-life job - a privilege not lost on him!

This 'work' has led him to overwinter three times in Antarctica, climb unclimbed peaks as well as getting covered head to toe in penguin guano...it's not all glamorous!

---

# Adam Turner, FRGS - Assistant Expedition Leader

---



Adam was brought up in countryside of Essex, England. He began sailing at the age of 9 and began working on the local river aged 12 before leaving school.

By 16 he had a small fishing boat and was working on boatyards and taking tourists to see the local seal colonies as well as helping out on the local Lifeboat.

Adam then joined HM Forces and was posted to Northern Ireland and in the UK, he also served in Kenya as a boat operator. In 2002 Adam joined the Police and spent several years on a specialist unit working

across the UK with his search dog Charley.

Since being a young lad Adam had dreamt of working in the Antarctic like his Uncle had done in the late 1980's, and in 2014 Adam left the Police to work as Boating Officer for British Antarctic Survey at King Edward Point, South Georgia where he spent just over a year.

Adam studied at Middlesex University and often gives lectures on history, in 2017 he was elected as a Fellow of the Royal Geographical Society, and he now works as guide and Consultant.

Adam holds a commercial masters certificate and instructs in several marine disciplines, he enjoys diving, climbing, kayaking and outdoor activities.



---

# Sara Jenner - Expedition Guide

---



For as long as Sara could remember she has had a passion for travel and searching for the wildest and most remote places on earth.

Back in the UK when she was only 10, she remembers trading in her favourite pink bicycle for the money to start her travel fund. Every birthday and Christmas she added a little more in the kitty and finally, at 18 she realised her dream of diving at the Great Barrier Reef! At that point the travel addiction was born!

Ever since Sara has been travelling the globe in search of wild and remote places and has spent many months volunteering on wildlife conservation projects in a bid to help some of our most iconic and endangered species.

Sara's love of wildlife and the great outdoors has taken her to all seven continents and she has travelled extensively in the polar regions including the Antarctic Peninsula, Falklands, South Georgia, Spitsbergen, Greenland, Iceland, Baffin Island and Canadian High Arctic. Returning to the UK, Sara used this knowledge to work in the travel industry as a polar specialist for several years, until the travel bug hit again, when she decided to swap life on the land for a life at sea and joined the Oceanwide Expedition Team in 2016.

Sara is a keen wildlife photographer and when she is not wrapped up warm in the polar regions she enjoys working as a photographic guide in Botswana, on the beautiful Chobe River and Okavango Delta, so really has a life of two halves.

---

# Omblin Chabasseur - Expedition Guide

---



Always attracted by sports in nature, her passion for Polar Regions really started when she decided to live in Finland to finish her studies. From then, Omblin dedicated all her free time to these areas, first of all in Svalbard, then Greenland, and she finally worked in a travel agency specialized in these regions, where she created on-demand trips.

Little by little, with the experience, the motivation and the knowledge, Omblin decided to quit the indoor job to spend more than 6 months per year on the field in order to guide small groups in hiking or

kayak trips and share passion and awareness.

She learnt by herself a lot, so her interests are wide. She became generalist to answer all kind of questions, which can be about flora, fauna, history or Arctic geopolitics. When she has free time, Omblin tries to escape several weeks to explore new areas, mainly in kayak.

She joined expedition cruises about 8 years ago and has been able to sail on different ships going to Svalbard, Greenland, Nunavut, Russia but also Antarctica, South Georgia, Falklands Islands and lately in tropical region aswell!

---

# Jerry Zhao - Expedition Guide

---



Soon after completing his degree in Business Administration at Drexel University in Philadelphia, Jerry began a career in the travel industry. Jerry first started as an international travel consultant and tour leader and led exclusive small high-end guests throughout Europe. He then became partner in an international travel consulting firm and focused on employee training.

Searching for more adventure, Jerry joined a Chinese travel agency specializing in Polar regions as a project manager. He has travelled to the North Pole several times on the Russian ice breaker and has organized yacht charters to Antarctica and along the way he has studied the geography, wildlife and history of the Polar regions

---

# Laurence Dyke - Expedition Guide

---



Laurence is from Cornwall in the far southwest of the UK and grew up on the coast, never far from the water and boats. Laurence has a background as a geographer with a special focus in glaciology, a choice inspired by seeing a glacier up close for the first time in the Austrian Alps.

For the last 7 years he has worked in science, both in the UK and Denmark, working to understand how and why huge glacier systems have changed in the past. Laurence first visited the Arctic in 2010 whilst undertaking research for his PhD and was immediately captivated by the wild landscapes of the high latitudes. His subsequent research has taken him on numerous expeditions to remote areas of Greenland, Svalbard, and Arctic Canada.

Laurence is also a passionate advocate for polar science, when time allows, he produces videos and articles about research from Greenland and the wider Arctic. Laurence lectures in glaciology and geography.

---

# Bill Smith - Expedition Guide

---



“Super Bill” as described by his colleagues and clients, is a fun-loving outdoor pursuits enthusiast, cartoonist and former Head of Art and Design Education at Ellon Academy Aberdeenshire.

Bill joined Oceanwide Expeditions as a guide when Plancius was built and over the last few years has become addicted to the Polar Regions.

He has 55 years’ experience of Art and Design Education and Design for Industry. Plus 55 years leading and instructing a range of outdoor pursuits.

He has the following qualifications: -

- Royal Yachting Association Advanced Powerboat Instructor
- Royal Yachting Association Senior Sailing Instructor
- Royal Yachting Association Windsurfing Instructor
- British Canoe Union Open Canoe Instructor
- British Association of Ski Patrollers National Patroller
- British Association of Ski Patrollers First Aid Trainer
- Snow Sport Scotland Ski leader
- President of the Assynt Highland Games
- Honorary member of Assynt Crofters Trust
- Member of the Federation Internationale des Patrouilles de Ski

Bill delights in producing humorous cartoon logs of each trip.

---

# Miriam Vermeij - Expedition Guide

---



During her youth she travelled a lot with her parents and sister in Europe. Miriam developed an interest in nature at a young age and lots of time was spent outdoor, exploring local insects and plants. Following her interests she followed an environmental science study and got a degree with a specialisation on soil pollution. Nowadays she is a self-employed environmental planning officer.

From 1999 the travelling outside Europe started. With her husband Marcel, she travelled all around the world. In 2006 they went to the Antarctic and there the passion for the poles started. The first contact with the Arctic was in 2011 and after another trip in 2013 she came back as field assistant on the Dutch polar expedition (SEES) in 2015 and to the Dutch polar station in Ny Alesund in 2016. Since 2017 she has been guiding in the Arctic, followed by the Antarctic in 2018.

In Holland Miriam is a nature guide since 2003. First in the local forest and since 2008 also in one of the largest national parks in Holland: De Biesbosch. There she is guiding school kids and adult groups on walking and boating trips. She is also part of the board that manages the local forest.

---

# Marcel Paul - Expedition Guide

---



From his teens Marcel has been a keen traveller. After camping and trekking with friends, he led groups on trekking's to Austria, Switzerland, England and Scotland. His own travels over the last 20 years brought him to all 7 continents together with his wife Miriam. With his interest in (exploration) history and as keen hobby photographer, the Polar Regions have always been drawing his attention.

At his first arrival to Svalbard in 2011 and a second trip in 2013, he felt connected with the remoteness of the place and the dynamics of the polar nature. At that time the idea started to grow to become a polar guide and give up a job that is keeping him indoor most of the time.

When the Dutch organised a scientific polar expedition to Edgeøya it seemed the perfect opportunity to gain more knowledge from the area by working with the scientists. He joined the expedition in 2015 as field assistant and participated in various fields of research. In 2016 he went to the Dutch polar station in Ny-Alesund, again as field assistant.

Living next to one of Europe's biggest wetland reserves, the Biesbosch in Holland, weekends are often spent on his boat with his camera close by. Since 2017 he has been guiding in the Arctic, followed by the Antarctic in 2018.

---

# Meike Sjoer - Expedition Guide

---



From early on Meike has been a passionate naturalist and traveller who just loves birds.

At the age of 7 she bought her first bird book. Being outdoors all the time, she wanted to learn more about the amazing creatures she encountered. Investigating and learning about nature and wildlife has been a passion ever since.

Meike has a master degree in film and television from the University of Utrecht. For the last 25 years she has been working as a television director. Her stories involve nature, wildlife and environmental topics. If

not travelling she is directing the prime-time wildlife television program Vroege Vogels.

When time permits, she volunteers as a nature guide for the Dutch institute for nature and education. As a teenager Meike started sailing the oceans but her true love for the life in the oceans began 14 years ago when she started working with Sea Shepherd on the mediateam.

Meike is thrilled to be your guide on this trip, and looking forward to sharing knowledge and the passion for this magical polar world with you.



---

## Szymon Niezabitowski - Expedition guide

---



Szymon was born in 1993 in Cracow, Poland. He studied Biology and Geography in Cracow where he received graduate degree in “Faculty of Biology and Earth Sciences”.

His graduate thesis was about Volcanic Soils on Iceland.

After he finished his studies he worked for the Institute of Systematics and Evolution of Animals, where he was a guide and keeper of exotic animals.

From the earliest years of his life he is a passionate naturalist with a special interest in the geography and the wildlife of the higher latitudes.

---

## Melissa Scott - Expedition Guide

---



In 1987, Melissa moved to the mountains of Montana and never looked back. She completed her degree in Environmental Science Education and has dedicated her career to inspiring conservation through relevant, first-hand encounters with the natural world.

She is a dynamic and enthusiastic professional naturalist/guide with over 28 years of experience leading natural history and cultural trips around the globe. While she truly enjoys every region in which she guides, whether deserts or mountains or oceans, the arctic marine environment is probably top on her list. The complexity and richness of this system is incomparable, supporting such iconic creatures as polar bear, arctic fox, bowhead, beluga and narwhal along with the vast abundance of seasonal migrants. So, whether exploring the arctic wilderness of Svalbard & eastern Greenland, the bamboo forests of China, the nursery lagoons of Baja's grey whales, or the wilds of the U.S. and Canada, you can be sure she is excited to share her knowledge and enthusiasm with you!

---

# Robert Kneen - Ship's Doctor

---



Robert works most of his life as a general practitioner (primary care physician) in Cornwall, UK but escapes to work as a travel medic as often as possible.

At home his hobbies include sailing, cycling, walking and climbing. In the winter he heads for the mountains to ski and mountaineer.

Most of his travel work involves high or cold environments and frequently both. In the last few years he has worked as a travel medic in Nepal, Antarctica, Tanzania (Kilimanjaro), Peru, China, Indonesia, Malaysia and many parts of Europe.

He has a wife and 2 grown up children who all share his love of travel and nature.

# In Search of Polar Bear and Pack Ice Special

June 28 - July 5, 2019

**Day 1, June 28, Friday: Boarding and departure from Longyearbyen**

## WELCOME ABOARD!

*For the arriving passengers: luggage will be delivered to your cabin as soon as possible. Please check to make sure you have received all your luggage!*

**\*\* Tea and coffee are always available in the lounge bar on deck 5 \*\***

- |              |  |
|--------------|--|
| ±17.30 (TBA) | Welcome briefing in the lounge (deck 5).<br>Expedition leader Raphael and hotel manager Michael will introduce you to the life on board the Hondius.<br>This will be followed by a <b>mandatory</b> 'Safety at Sea' briefing.<br>Presence will be checked. |
| ±18.00 (TBA) | Departure of the Hondius. Please stay off the bridge during these operations, which will be followed by the <b>mandatory</b> emergency briefing and the safety drill (presence will be checked). Please pay attention to the announcements.                |
| 19.30        | Dinner is served in the dining room (deck 4).  |
| ±21.15 (TBA) | After dinner, feel free to relax in the lounge, enjoy the navigation, discover the ship...   |

The first part of the evening we will sail through the large Isfjord towards the open sea. Then we head North, along the outer coast of Spitsbergen. The total distance will be around 150 nautical miles (1 nm. is around 1,9 kilometres) to reach our destination in the north-east corner of Spitsbergen.

***Please note that tonight we will be sailing into the open sea. Take your seasickness medication before you really feel the movements of the vessel. Make sure that all your belongings are put away safely and that doors and drawers in your cabin are tightly closed. Walk slowly on the ship, always use one hand for yourself and one for the ship and beware of your fingers because of doors jamming!***

(TBA) = To Be Announced

# In Search of Polar Bear and Pack Ice Special

June 28 - July 5, 2019

## Day 2, June 29, Saturday Smeerenburgfjorden & Magdalenafjorden

07.30	Wake-up call.
08.00 – 09.00	Breakfast buffet in the dining room (Deck 4), for one hour.
09.30	<b>Compulsory</b> meeting in the observation lounge (deck 5). Your presence will be checked. Please join the expedition team in the lecture room to hear the safety and environmental guidelines. You will also be introduced to the itinerary, the Expedition Team and the afternoon's activities.
TBA	Boot distribution by deck. Please pay attention to the announcements.
12.30	Lunch
+/-14.30	Activities in Magdalenabukta
18.30	Recap & briefing by your expedition team followed by a Captain's cocktail in the lounge
19.30	Dinner

Later in the morning, we will arrive in the Smeerenburgfjord for a nice navigation. In the afternoon, we plan to carry out operations in Magdalenafjorden. This place is blessed with beautiful glaciers, landscape, history (whaling) and possibly walrus. Details regarding the activities, and specially timing, will be given during the morning briefing and through the PA system. Please pay attention to the announcements.

(TBA) = To Be Announced

# In Search of Polar Bear and Pack Ice Special

June 28 – July 05, 2019

## Day 3, June 30, Sunday To the North!

07.30	Wake-up call
08.00 – 09.00	Breakfast buffet in the dining room (Deck 4)
12.30	Lunch
18.30	Recap & briefing by your expedition team
19.00	Dinner

### **Today it is Sea Ice Day!**

Our goal is to travel off the north-eastern coast of the Svalbard archipelago in the direction of the pack ice.

We will begin to sail through the pack ice from 06.30-07.00. The expedition team will do bear watch all day long but feel free to join them and give a hand!

Our challenge will also be to cross the 80° Latitude North the first time for Hondius!

Any special encounter, nice navigation, outing, or lecture will be announced through the PA system.

# In Search of Polar Bear and Pack Ice Special

June 28 - July 05, 2019

## Day 4, July 1, Monday Smeerenburgfjorden and Nordvestøyane

07.30	Wake-up call
08.00 – 09.00	Breakfast buffet in the dining room (Deck 4)  If we see Polar Bears as we re-enter the ice, we will stop. If not and we feel the weather permits, we will try for an activity.
12.30	Lunch
TBA	Bird-related activities in the Nordvestoyane. Pay attention to the announcements for the organisation.
18.30	Recap & briefing by your expedition team
19.00	Dinner

After a night spent out of the ice, the ship will position on the northern side of the sea ice plate where we saw our very first bear. If we see anything, we will have a nice observation...

Then, we will proceed to the Nordvestoyane, a small archipelago off the northern coast of Spitsbergen, where we will carry out a bird-related activity. We plan to land on a small island called Fuglesangen, a very nice Little Auk breeding place. This landing involved disembarkation on small rounded rocks and a short but quite steep boulder up to a nice ground. The walk to the colony is then easy.

(TBA) = To Be Announced

# In Search of Polar Bear and Pack Ice Special

June 28 - July 05, 2019

## Day 5, July 2, Tuesday Kronebreen and Ny Alesund

07.30 Wake-up call

08.00 – 09.00 Breakfast buffet in the dining room (Deck 4)

09.30 – 12.15 Zodiac cruise to Kronebreen  
09.30: RED and BLUE  
10.45: YELLOW and GREEN

The BBC Documentary “The Hunt” about the predators of the Arctic will be broadcasted in the Lecture Room (Deck 5) at 09.45 and 11.00.

12.30 Lunch

14.00 – 18.00 Landing at Ny Alesund. Disembarkation will be by zodiac.  
14.00: BLUE and RED  
14.20: GREEN and YELLOW

Optional tours (meeting point at the Admunsen bust):

15.00: Visit to the historical mast of Ny Alesund with Iain (easy short walk)

16.00: Hike to the Zeppelin mountain for a spectacular view over the bay (5-6 km, 200-300 elevation gain, 2-2.5h, good terrain expected with snow and swampy areas possible)

16.00: Walk to a lake with fair birding (6-7 km, 50-100m elevation gain, 2-2.5h, good terrain expected with snow and swampy areas possible)

These activities are to be confirmed (depending on the terrain condition, the weather and the authorities in Ny Alesund).

18.30 Recap & briefing by your expedition team

19.00 Special Arctic Dinner

In the morning, we will zodiac cruise another beautiful glacier, one of the most studied in the world. Kronebreen is not only very scenic, but also very often surrounded by floating glacier ice where Bearded Seals used to rest.

On the afternoon, we will discover another face of Svalbard: human history. We will visit the small village of Ny Alesund, now only occupied by scientists of all countries, but once the most important site in the history of the exploration of the North Pole in Svalbard and also a coal mining city.

Visit the village, settled in a very attractive scenery, and its museum (always open and free), shop, post office, Admunsen bust, Nobile mast, dog yard, wildlife (reindeer and arctic fox regular visitors, plenty of birds) and people! Your guides will be around to share this visit with you!



# In Search of Polar Bear and Pack Ice Special

June 28 - July 05, 2019

## Day 6, July 3, Wednesday To the Sea Ice!

07.30	Wake-up call
08.00 – 09.00	Breakfast buffet in the dining room (Deck 4)
12.30	Lunch
18.30	Recap & briefing by your expedition team
19.00	Dinner
21.15 – 22.15	BBC Documentary “The Hunt” in the Lecture Room (Deck 5)

### **Today we are back to the pack ice!**

Our goal is to travel off the north-eastern coast of the Svalbard archipelago in the direction of the pack ice.

We will begin to sail through the pack ice from 07.00. The expedition team will do bear watch all day long but feel free to join them and give a hand!

Will we go further than the 80° Latitude North this time and set a new record for Hondius? Will see!...

Any special encounter, nice navigation, outing, or lecture will be announced through the PA system.

# In Search of Polar Bear and Pack Ice Special

June 28 – July 5, 2019

## Day 7, July 04, Thursday St. Jonsfjorden and Alkhornet/Selmaneset

07.00	Wake-up call
07.30 – 08.30	Breakfast buffet in the dining room (Deck 4)
08.45 – 12.00	Landing at St JONSFJORDEN YELLOW and GREEN: Disembarkation at 08.45 on the southern coast BLUE and RED and SWIMMERS: Disembarkation at 09.00 on the northern coast
12.00	Lunch
Aprox. 15.30 – 18.30	Landing at ALKHORNET or SELMANESET LONG and LEISURE WALK: Disembarkation at Alkhornet MEDIUM WALK: Disembarkation at Selmaneset <b>Timings to be confirmed</b>
14.00 – 22.00	Settlement of your account at reception (Deck 4)
19.00	Captain's farewell cocktail with the Captain and your expedition team in the Lounge (deck 5)
19.30	Dinner in the dining room (Deck 4)

In the morning, you will disembark in St. Jonsfjorden. Depending on your colour group, you will land either on the northern or southern side of the fjord. Both sides provide the same experience: the possibility to see a nice landscape, good tundra with flowers, reindeers...

Once ashore, on both sides, you will join either a walking group (for a 4-5km walk) or a leisure group (short-distance walk).

An optional polar plunge will also be proposed. If you feel like having a swim in the sea, please disembark with the Blue and Red group at 09.00, even if you are Yellow or Green (relatives can accompany you). This will be organised at the end of the operation, before going back to the ship. Towels will be provided ashore.

The afternoon, the ship will be drifting at the entrance of Tryghamna. You will have to choose between different activities:

- If you are interested in a medium walk (approx. 3km, 150m elevation gain, on gentle tundra with rocky ridge behind), you will disembark at Selmaneset (Eastwards), where you will discover nice geology (rocks, landscapes, fossils), a nice viewpoint and possibly reindeers.
- If you are interested in a hike (approx. 5km, 300m elevation gain, on moraine and thick tundra) or a leisure walk (approx. 2km, 100m elevation gain, on moraine and thick tundra), you will disembark at Alkhornet (Westwards), where you will discover nice landscapes, lush tundra, possibly reindeers and arctic fox.

On the evening, don't miss the Captain's farewell cocktail with your Captain and your expedition team!

# In Search of Polar Bear and Pack Ice Special

June 28 – July 05, 2019

## Day 8, July 05, Friday Longyearbyen

- 07.00 Wake-up call
- 07.00 Please put your heavy luggage in the corridor near your cabin, **at the latest at 07.00**. The crew and staff will carry it down to the pier.
- 07.30 – 08.30 Breakfast
- Please leave your key-card holder at the reception.
- +/-08.30 (TBA) Time to say goodbye! All passengers leave the ship via the gangway.

All passengers will disembark with zodiacs. We recommend you to wear your waterproof pant although no much wind is forecasted. Don't forget your lifejacket, you will leave it ashore.

Buses have been arranged to take you to Longyearbyen or the airport.

Passengers with an afternoon flight put their luggage into a luggage truck. Please check that you take all your luggage from the pier and drop it at the right vehicle. The luggage will be transported to the airport, where you need to pick it up at the truck near the entrance of the airport.

- For the **13.25 flight** the bus will pick you up at the drop-off place at the Butikken at 11.45 and drive you to the airport. You do not need an extra label for the luggage.
- Passengers going to a hotel put their luggage into the bus. You will be dropped in the town centre near the Svalbard Butikken. Please attach label nr 1 on your luggage.
- Passengers with their own transport, also attach label nr 1 on your luggage.

**Dear passengers, we enjoyed having you on board. Have a nice and safe journey home. Hopefully we meet again somewhere, sometime, in the Polar regions!**

## Farewell!