



Around Spitsbergen

on board

m/v *Hondius*

July 14th – July 23rd 2019



The MV *Hondius* was built in 2019 in Brodosplit, Croatia, as an expedition vessel for Oceanwide Expeditions. *Hondius* is 107.60m long, 17,60m wide and has a maximum draught of 5.3m and has an exceptionally high Ice class of PC6, a top speed of 15 knots and 3 diesel generators. The *Hondius* sails on LSMGO. Now the ship is sailing as a 176-passenger vessel with 83 cabins. Our beautiful, modern vessel carries 369m³ of fresh water and has a water plant producing 70m³ per day. In many ways, the *Hondius* is the perfect vessel for a true polar adventure!

Captain Remmert Jan Koster

and his international crew of 68

including

First Officer:	Matei Mocanu	[Romania]
Staff Officer:	Toni Salo	[Finland]
Second Officer:	Diederik Scholten	[The Netherlands]
Third Officer:	Igor Nazarov	[Russia]
Chief Engineer:	Sebastian Alexandru	[Romania]
Hotel Manager:	Michael Frauendorfer	[Austria]
Assist. Hotel Manager:	Dejan Nikolic	[Serbia]
Head Chef:	Ralf Barthel	[Germany]
Sous Chef:	Sean Steele	[USA]
Ship's Physician:	Bart Stepien	[Poland]

and

Expedition Leader:	Adam Turner	[Great Britain]
Assist. Expedition Leader:	Florence Kuyper	[The Netherlands]
Assist. Expedition Leader:	Shelli Ogilvy	[Alaska]
Expedition Guide:	Sara Jenner	[Great Britain]
Expedition Guide:	Laurence Dyke	[Great Britain]
Expedition Guide:	Jerry Zhao	[China]
Expedition Guide:	Pablo Brandeman	[Argentina]
Expedition Guide:	Leonard Dewaele	[Belgium]
Expedition Guide:	Pierre Gallego	[Luxemburg]
Expedition Guide:	Mariela Cornejo	[Argentina]
Expedition Guide:	Meike Sjoer	[The Netherlands]
Expedition Guide:	Szymon Niezabitowski	[Poland]
Expedition Guide:	Melissa Scott	[USA - Montana]

We welcome you on board!

Day 1: 14th July 2019

Embarkation, Longyearbyen

GPS position at 0800: 78°13'.62 N, 015°38'.50 E

Wind: W4 Sea State: slight Weather: cloudy

Air Temp: +5 °C Sea Temp: +9 °C

As the plane was coming down to Svalbard, the first postcards of the Arctic showed up. We could see the Southwest side of the archipelago, with the beautiful mountain range and glaciers surrounding Longyearbyen.



Oceanwide staff members were waiting for us at the airport to a warm welcome to our exploration of Spitsbergen. After recovering our luggage, we were finally ready to enjoy a couple of hours in town before embarking what was going to be our home for the next ten days: MV Hondius.

Longyearbyen, “the city of the long year”, was founded in 1906 by the US-American entrepreneur John Munro Longyear. But the truth is, the history of the area goes back in time to the years of the Pomors, hunters from the north coast of Russia, and the officially documented “discovery” of Spitsbergen by Willem Barentsz in 1596.

Svalbard and its stories of whalers, hunters, trappers, miners and scientists from different nations, make the archipelago very attractive not only from a wildlife point of view, but also from its historical and scenic angle. Base to some of the most amazing



voyages to the North Pole, like the Amundsen and Nobile aerial trips, makes visitors transport themselves back in time to the era of early exploration.

With a big smile and our eyes wide open to look for wildlife in the open decks, we were ready to start our adventure. Mandatory safety briefings were to be attended, and a familiarization of the ship, but the “cherry on the pie” was the delicious dinner served in the dining room by our Chef Ralf.



We still had one more activity to go: our rubber boots were being distribute! Down at the Expedition Room, we sorted out our sizes, picked up our small boat life jackets and finally, we were ready to jump on the boats for our first excursion next day.



After a first afternoon meeting our staff, crew and fellow expeditionary friends, we headed to the bar to share a drink before going to bed.

Day 2: 15th July 2019

Sailing North and Ny Ålesund

GPS position at 0800: 79°10'.7 N, 011°46'.0 E

Wind: NW2 Sea State: Calm Weather: Overcast

Air Temp: +7 °C Sea Temp: +5 °C



A smooth night of sailing had allowed us to navigate north, past Prins Karls Forland and up into Krossfjord. As Adam woke us up at 7:15 we cruised into Lilliehöökfjord. Despite a little low-lying cloud and mist we could still clearly see Lilliehöökfjord. Despite a little low-lying cloud and mist we could still clearly see Lilliehöökfjord. Despite a little low-lying cloud and mist we could still clearly see Lilliehöökfjord. Despite a little low-lying cloud and mist we could still clearly see Lilliehöökfjord.

with its 11km wide, semi - circular glacier front. Interestingly this is one of the fastest retreating glaciers in the archipelago, with an estimated 40% of the total ice volume of the glacier being lost within the last century, with an accelerating tendency in recent years. Despite this dramatic development Lilliehöökfjord is certainly one of the scenic highlights of this area so most headed to the outside decks after breakfast to marvel at this natural wonder.

At 9:30am we gathered in the lounge for some mandatory briefings and to hear about the plans for the voyage. Before the official briefings the Expedition Team introduced themselves individually, an international bunch who will be driving us ashore, giving lectures, leading hikes, keeping us safe and ensuring we get the best possible experience during our trip. Adam then continued with the



three mandatory briefs which are needed before going a shore in Svalbard, AECO Arctic protocol, zodiac operations and polar bear safety. The meeting concluded with the plans for the rest of the day, a landing at Ny Ålesund.

Over lunch we sailed into Kongsfjorden (Kings Bay) so as to be in position for our afternoon activity at Ny Ålesund. This

former coal mining settlement is now a scientific community operating under the Norwegian Polar Institute research governance and is considered to be the most northern settlement in the world. Despite there being no permanent population of families or children in Ny Ålesund, nearly 200 scientists work in there during the summer months, reducing to less than 50 in the winter.



We were shuttled ashore by zodiac and given time to wander around the museum, visit the small gift shop and send post cards home to loved ones before having the option to join one of the three designated walks. All three groups enjoyed the abundance of

flowers and birdlife that could be seen, the first Arctic Fox and Harbour Seals of the voyage were also spotted by some of the groups and for the keen birders there were lots of Arctic Terns, Barnacle Geese, Eider Ducks and Snow Bunting, as well as the much sought after Ivory Gull. All groups went via the mast that was used to anchor a Zeppelin airship in 1926 which is found on the edge of the settlement. This provided the perfect place for the



historians within the expedition team to talk a little bit about the history of Arctic exploration and the attempts to reach the North Pole from Spitsbergen.



Back on board, Adam led a short recap where he discussed the plans for tomorrow and Sara spoke about how we hope to spot our first Polar Bear. After which it was time to meet our captain, Remmert Jan Koster, who joined us in the observation lounge to welcome us on board and toast the success of the rest of the voyage with a glass of bubbly.

After another delicious dinner most people head up to the bar to reflect on the day's events and to enjoy a nightcap to celebrate the first successful expedition day.

Day 3: 16th July 2019

Texas Bar and Monacobreen

GPS position at 0800: 79°36'.4 N, 012°43'.9 E

Wind: SW3 Sea State: Calm Weather: overcast

Air Temp: +4 °C Sea Temp: +4 °C



We woke up in the calm seas of Liftefjord with an overview of the iceberg graveyard. The sky was overcast and the temperature was warm. As we approached our designated landing site at Texas Bar, we encountered beautiful bergy bits and growlers that reflected the blue light from the morning sun that poked through the clouds. The Staff team started earlier in order to scout the shore line and eventually the hills, as our plan was to take a hike onto higher grounds to enjoy the wonderful views that this bay had to offer.





After breakfast, we got on the zodiacs and zipped to shore onto two different locations. On the first one, a group started on a longer hike that climbed about 200 meters over sea level, reaching a view point where we could see Monacobreen, the glacier where we would head for our afternoon excursion.

The second site was designated for two different hikes, one of a medium length and the second one a stroll close to the small hut that gives the name to this location. Texas Bar was a trapper's hut, built in 1929 and used over a couple of decades before the trapping and hunting became obsolete in these regions. Now a days, this hut belongs to the Sysellmannen (Svalbard Government and law enforcement Beaurou), and is used for logistics and occasionally by the locals from Longyearbyen over spring time on snowmobile trips.



On the hikes, we were able to spot Skuas, Kittywakes, Snow buntings and other feathered friends. We spotted Reindeer tracks, and we were all on the lookout for these amazing Svalbard species.

As all the trekking groups made it to Texas bar landing site, we were able to enjoy a polar plunge! Some of us were brave enough to dive into the frigid waters of the Arctic ocean, to come out revigorated and definitely ready for a hot shower and lunch. Zodiac drivers took us back to Hondius where the Hotel team was waiting for us.



In the afternoon, around 14:30 we went on a zodiac cruise expedition. All wrapped up and warm, we got on the boats to go explore the ice around Monacobreen. Incredible ice sculptures, glittering brash ice and rigid walls of ice from the front of the glacier gave us a perfect frame for the thousands of pictures that were snapped on this location. As we were



getting to the end of this excursion, the expedition staff spotted some seals! Bearded and harbor seals were swimming amongst the ice, and eventually a bearded seal climbed up on an ice floe. It seemed to pose for some photos as we quietly cruised close by. The expedition team reminded us to keep our volume low as these seals are skittish, and afraid of any sound. Engines of the boats were turned off and we enjoyed some minutes of silence as we looked

at the resting seal. Some Eider ducks flew over our heads in pairs, Kittywakes fed in front of the glacier face and Brünich's guillemots floated in the vicinity.



After coming back to the ship, and as we were being entertained and educated at our usual daily recap, whales showed up! A couple of Fin whales, a Humpback and a Minke whale were feeding in the entrance of Liftefjord bay. Officers on the bridge slowly maneuvered through the whales in order to not disturb them as they fed close to the ship.

Dinner was served at 19:30, and we thought our exciting day had finally come to an end, but another surprise was waiting for us. While having dinner, our experienced staff members spotted Polar Bears!

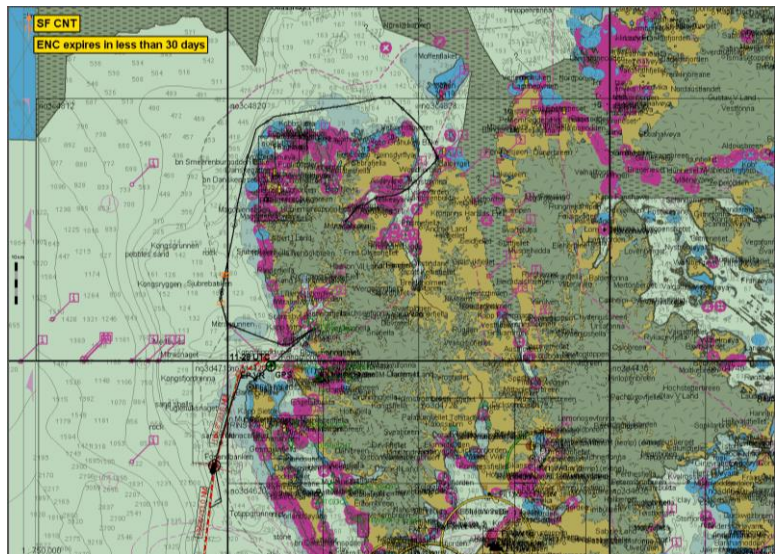
As dinner was coming to an end, an announcement was made that a mother and a cub had been seen on the side of the mountains that lead to a point on the east side of Liftefjord bay entrance. We rushed outside to find that two scopes were set



on the outer decks so we could see the bears as they played and rested on the slopes and snow patches on the side of the hills.

This is our third day onboard Hondius, and our experience in the Arctic region is getting better every day!

And we thought it was over, again... but at 23:50 hours, many of us already in bed, we were woken up by the horn as we crossed the 80° North! Out we went again for the last couple of pictures, and we finally call it a day.



Day 4: 17th July 2019

Fjortende Julibukta and sailing South on the West coast of Prins Karls Forland

GPS position at 0800: 79°07'.5 N, 011°48'.3 E

Wind: NW4 Sea State: Smooth Weather: Overcast

Air Temp: +10 °C Sea Temp: +9 °C



Another bright day, another fun day on Svalbard!

This morning, we went to a place called 14. Julibukta (14th of July Bay) in Krossfjord (Cross Fjord, named for the wooden cross erected there by the English whaler Jonas Poole in 1610).

One half of the passengers made a landing first, while the other half went for a zodiac cruise along the beach and a small puffin colony (*Fratercula arctica*); and vice versa about an hour later. The zodiac cruise was specifically directed towards said puffin colony and to have a good opportunity to take a few shots of these clownesque –yet cute– little birds.





The party ashore was arguably equally fun, with opportunities to have a close look at the 14. Julibreen (14th of July Glacier) and the hanging gardens, the writer's personal favourite place.

There was a plethora of wildlife ashore, including arctic foxes (*Alopex lagopus*), Svalbard reindeer (*Rangifer tarandus platyrhynchus*), pink-footed geese (*Anser brachyrhynchus*) and snow buntings with fledglings (*Plectrophenax nivalis*) under a towering cliff with a loud kittiwake colony (*Rissa tridactyla*).



The sheltered, south-facing hanging garden, forms the perfect habitat for a lush vegetation: protected from most winds and allowing the plants to soak up every bit of precious sunlight. This allows the very local flora, including mountain sorrel (*Oxyria digyna*), arctic mouse-ear (*Cerastium arcticum*), and drooping saxifrage (*Saxifraga cernua*) to grow remarkably tall to Svalbard standards.

In the afternoon, staff opted to check out an – obviously male– sperm whale carcass (*Physeter macrocephalus*) on Fuglehuken (Bird Point, referring to the bird colonies in the area) on Prins Karls Forland. Although decaying whale carcasses often attract well over a dozen polar bears (*Ursus maritimus*), the current carcass was still too “fresh” for them and there were no



sightings of bears. On the bright side, though, the sighting of a fin whale (*Balaenoptera physalus*) with a small pod of white-beaked dolphins (*Lagenorhynchus albirostris*) off the west coast of Prins Karls Forland made everyone's afternoon a big success!



Later in the evening, the few people in the bar got treated with the sighting of a second group of five to six white-beaked dolphins swimming along the ship for another couple of minutes; making today a day to remember.



Day 5: 18th July 2019

Camp Millar and sailing East

GPS position at 0800: 77°44'.5 N, 014°21'.1 E

Wind: NW4 Sea State: smooth Weather: overcast

Air Temp: +8 °C Sea Temp: +7 °C



We were woken up by Adam, our expedition leader, at 7:30, and together with our location we received good information about weather at Camp Millar which was our destination for a landing.

Beside swell and wind reaching almost 20 knots, weather was good. After a tasty breakfast prepared by the galley team, we dressed up quickly wearing warm clothes and lifejackets. We queued up close to the shell doors



ready to board zodiacs, and just after 9 o'clock, we were already landed inside the beautiful bay surrounded by rounded rocks smoothed by waves and wind.



Just above the small hill we could see two huts of Camp Millar erected in the early 1900s by one of the most famous expedition company based on Spitsbergen: NEC – Northern Exploration Company, which started mining in Bellsund looking for zinc, asbestos, coal, gold and other minerals.

During the walk, we could also hear and admire wonderful wildlife; reindeers together with cute and white newborns roaming the rich tundra full of plants with flowers and polar willow, hills of Ingeborgfjellet fully packed with loud Little Auks and Arctic foxes which tried to sneak closer to little auks who still had a few eggs.



After a couple of hours on land, we had to come back to Hondius for lunch and be ready for 20 hours of cruising to our next destination which was on Edgeoya – Kapp Lee. During that time, our expedition team prepared for us a series of Lectures: at 3 pm Florence spoke

about an amazing story of Willem Barents and the early discovery of Spitsbergen, and after a short break for a cup of coffee and cake in the lounge, Meike, Szymon and Laurence invited us to the lecture room for a series of three lectures about Geography of Svalbard, Climate of Svalbard and the Amazing life of Auks.

At 6:30, Adam gave us plans for tomorrow at recap in the lounge, and later on, Sara talked about the Arctic fox which we could see during the morning. Florence presented detailed information about the landing site



and just after 7 pm, we sat comfortably in the dining room to admire the delicious food prepared by our chef Ralf.



Day 6: 19th July 2019

Sundneset and Kapp Lee

GPS position at 0800: 78°10'.3 N, 020°58'.7 E

Wind: SW4 Sea State: slight Weather: Partly cloudy

Air Temp: 6°C Sea Temp: 4°C



After sailing overnight, what a pleasure to wake this morning to sun and stunning mountains surrounding the ship. Our plan was to land at Kapp Lee for some quality hiking and a visit with the local walrus bachelors. As we looked a bit closer, however, we realized that some sea ice was packed up against the shore where we wanted to land. Our fearless expedition team, determined as they were, jumped into a zodiac to see if there was any route we could take that would get us safely to shore then back to the ship. Alas, the ice was too closely packed to push through and the wind would have made it dangerous to land. So off we went to what had originally been our plan for the afternoon – a landing at Sundneset with a variety of hikes and walks.



Sundneset is such a beautiful place to spend time, a landscape of rolling lowlands with outcrops of dioritic bedrock sculpted by ice age glaciers and bejeweled with lovely freshwater lakes. The group that was keen on getting an unforgettable view departed for shore first and were off to “bag the peak” of Fuglehallet at 272m or almost 900 ft in about 4.2 km each way. Seeing them on top from

near the landing sight gave us a great perspective of how small we really are in this landscape. The rest of us split into smaller groups based on interest and explored the landscape near the lakes. We found large groups of Barnacle and Pink-footed geese as well as Long-tailed ducks along with snow buntings flitting about the tundra trying to find enough to feed their young before they need to head south. Reindeer were plentiful and looking quite dapper in their summer coats, their antlers still covered in velvet.



During lunch, the captain and expedition team decided to sail back to Kapp Lee to see if the ice had shifted enough for us to see the walrus. It was looking good but the ice was still lingering and with the continued wind, tide and currents around the cape, the decision

was made to attempt a short zodiac cruise past the beach where they haul out. We dropped 8 zodiacs and half the ship boarded, made their way through the ice flows and had a nice visit the bachelors sleeping on shore. As the group was ready to return, we saw the clouds begin to drop down over the mountain and within minutes the entire landscape disappeared into a dense fog. It gives one a great sense of respect and appreciation for how quickly conditions

can change and the dangers of not being prepared. Our team evaluated the situation and though they knew that those who did not get to go might be disappointed, safety comes first so they cancelled the second group's cruise. We stayed in the area to see if the fog would lift but it just was not to be. Fortunately, the team is always thinking ahead and already had in place another location for us to visit with walrus so we still have something to look forward to.



The evening was capped off with a scrumptious arctic bbq on the back deck followed by dancing and general merriment.

Tomorrow we are off to the pack ice and another day filled with surprises.

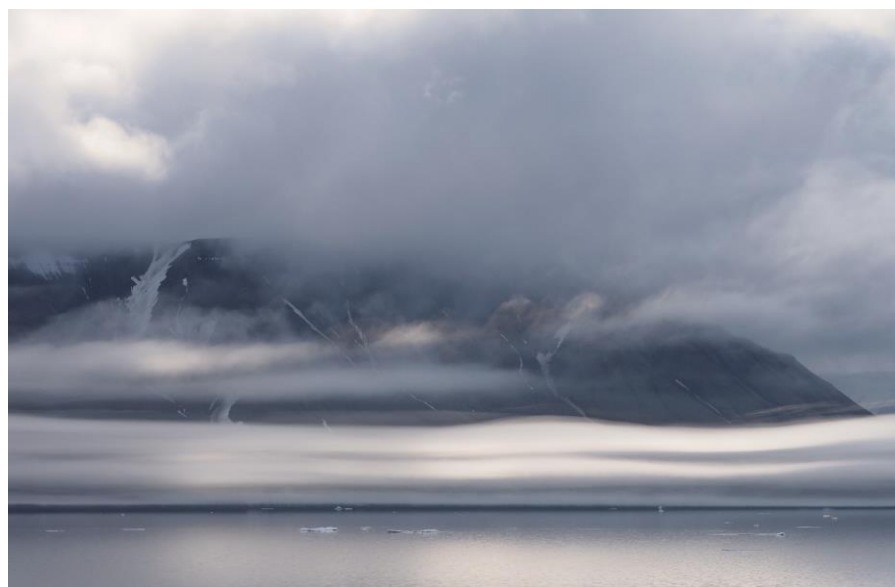
Day 7: 20th July 2019

Pack ice: in search for Polar bears

GPS position at 0800: 78°37'.5 N, 022°53'.9 E

Wind: E2 Sea State: Open drift ice Weather: Fog

Air Temp: 0°C Sea Temp: 3°C



A few of us awoke before the wake-up call, roused from our slumbers by the irregular movement of Hondius as she forced her way into the maze of pack ice at the eastern edge of Freemansundet. We peered groggily out of cabin windows and found ourselves in a moving monotone world of mist and sea ice. We stood for a

second absorbing this stark seascape until we heard the now familiar morning bing-bong, followed by the estuarine tones of Adam. He announced that the weather was foggy, and a gentle south-easterly breeze was ruffling the sea surface between the ice floes.

After another sumptuous breakfast we headed out onto the decks to take in the sights and sounds of the pack-ice; a truly wild Arctic environment. Outside it was a brisk -1°C, compounded by the breeze and the damp air. From vantage points around the boat we scanned the ice, looking for signs of life; we saw guillemots, a bearded seal, and plenty of kittiwakes and fulmars wheeling above the leads of open water. As the morning progressed, we pressed northwards and the fog closed in around



Hondius. An impromptu lecture on glaciology was announced. Laurence gave a lecture in the lounge whilst Jerry presented in Chinese in the lecture theatre. We learned about how glaciers are formed, how they flow, and how they mold the landscapes that they occupy. We also heard about the diverse and unique glaciers on Svalbard; this relatively small archipelago in the high Arctic hosts some of the most interesting glaciers on Earth and glaciologists are still working to understand their complex behavior.



After lunch the fog began to thin, and as we passed among the roiling banks of fog, we could occasionally get a glimpse of clear skies. Eventually we could also see the distant peaks of Edgeøya and Barentsøya, sentinels guarding the waters of Hinlopenstretet. The wind had eased through the morning, and died completely in the afternoon; the sea was a dark mirror, reflecting the grey of the

glooming Arctic sky. As the visibility improved, we spotted a juvenile walrus in the distance, hauled-out on an ice floe. We cautiously approached, careful not to disturb the slumbering giant. Just as we were leaving the walrus, we had an announcement from Adam, two polar bears had been spotted in the distance! We hurriedly grabbed our coats, binoculars, and cameras, and headed for a vantage point on the outer-decks. As Hondius drew slowly closer

we realized that there were in fact three bears; a mother with two young cubs! We watched from a respectful distance as the mother bear roamed across a large plate of sea ice, stalking the seals resting on the ice. The cubs followed her at a distance of several hundred meters, giving her a little space to hunt. We spent a glorious couple of hours observing



these beautiful animals before reluctantly heading off once more, bound for Freemansundet and the island of Spitsbergen, our destination for the morning.



Our afternoon of surprises was not quite over yet; our Hotel Manager Michael announced that hot chocolate would be served on the front deck, replete with lashings of cream and a hearty tot of rum! Steaming drinks in hand, we gathered for an impromptu group photo taken by Sara from a perch high on the decks above.



We lingered on deck as conditions outside were magical; the surface of the ocean was absolutely free of flaws; a perfect mirror all the way to the horizon. As we stood and took it all in guillemots, fulmars, kittiwakes, and even an Arctic skua passed low over the water around Hondius. Eventually we tore ourselves away from this beautiful scene and headed to the lounge for recap.



Adam explained the plans for tomorrow; we are heading to the southern fjord of Hornsund. Melissa followed with a presentation about sea ice, explaining how it forms and its importance as a habitat and as a substrate for life; sea ice underpins the base of the Arctic food web. Sara then gave a presentation on marine mammal identification, giving rafts of useful information about pinnipeds and how to distinguish the different species.

information about pinnipeds and how to distinguish the different species.



Dinner was excellent as usual, but this evening was extra special as it was complemented by amazing views from the dining room windows. As we dined Hondius made her way through the narrow channel of Freemansundet, steep walls of sedimentary rocks towered above us and the billowing banks of fog shrouded drifting bands of sea ice, the whole scene was lit gold by the evening sun.

Day 8: 21st July 2019

Hornsund and Burgerbukta

GPS position at 0800: 76°23'.4 N, 016°48'.1 E

Wind: W2 Sea State: Smooth Weather: Overcast

Air Temp: 5 °C Sea Temp: 6 °C



Amazing sunshine at the horizon this early Sunday Morning as the Hondius sailed heading to round the south tip of Svalbard making our way to Hornsund. For those who were awake early this morning, 2 blue whales appeared not far from the ship. The sun trying its very best, the clouds started

to roll molting into a thick fog for the morning. After breakfast, we all made our way to the lounge to listen to Sara's bear lecture. A great opportunity to learn more about bear behavior after yesterday's incredible encounter with the mother and two cubs. And for those who did not go outside to enjoy the scenery this morning, a visit to the library with a coffee or tea was a great way to recharge after the exhausting day taking in all the incredible impressions of sailing through the pack ice on yesterday's voyage.

After a lovely lunch, the Hondius sailed towards the afternoon destination for a zodiac cruise in Burgabukta. As we sailed closer to the glacier, the fog rolled in once again and Captain Remmert and Expedition Leader Adam decided to change plans and sail to Storbreen: a very large glacier. The Hondius sailed into



Brepollen – a wide bay with an almost completely glacial coastline constituted by both the Horn- and the Storbreen glaciers, while guides and guests alike were scanning the shores for Polar Bears. Even though we did not spot any bears, the scenery was breath-taking. The sun has fought its way through the clouds and the glacier fronts open up a marvellous landscape in front of us.



One by one, the zodiacs were put the water and the drivers were eagerly awaiting to embark the passengers into their zodiacs for a breathtaking cruise.

Kittiwakes and Arctic terns were flying above and along the ice while zodiacs move through the brash ice towards the glacier front.



It was hard to stop enjoying it, but eventually, it was time to turn back to the ship around 5 o'clock. But not for everybody... A special zodiac delegation with 6 of our youngest guests was



organized by Pierre & Meike. The kids helped Pierre to drag a plankton net behind the boat to catch water samples. These samples were taken on board and during the evening recap, the water samples were put under the microscope.

Attached to the screens in the lounge, we could all see the copepods displayed on a huge screen while Pierre explained about the secret life of plankton, something most of us had never seen in real life. This to the great delight of our youngest guest.

Adam gave us the plans for the following day, followed by hotel manager Michael with information about disembarkation day. Something most of us did not want to think about yet, having yet another full day of expedition ahead of us. Chef's fantastic dinner was waiting for us in the dining room, while the Hondius sailed in open waters towards tomorrow's destination the walrus at Poolepynten.

Day 9: 22nd July 2019

Poolepinten and Yoldiabukta

GPS position at 0800: 78°76'.2 N, 011°56'.0 E

Wind: SSW6 Sea State: Smooth Weather: overcast

Air Temp: 6 °C Sea Temp: 8 °C

Today we started the day with a landing on the long-awaited site of Poolepynten where a nice colony of walrus has established itself. There were about 20 Walruses hauled out on the beach and we were able to observe them for about 20 minutes per group. There were also some Walruses in the water and it was very interesting to watch them interact with each other and walk onto the beach.



We were all impressed by their size and the length of their tusks. These Walruses are believed to have recolonized Svalbard from Franz Josef land after the local population had been exterminated by hunters in the past. Most walrus in these waters nowadays are males, but some females with pups have been observed, indicating that there is a new local population establishing itself in Svalbard. A jolly good piece of news!



We were all happy to get back on board for a nice cup of hot tea, after which we had lunch. In the afternoon we sailed further South in the direction of Longyearbean and we all

participated in an Arctic Quiz organized by our expedition guide Sara. The questions were pretty difficult but all the teams did very well. There was a tied second and third place between “The Svalbard Adelaidians” and “Kangaroos and pandas”. The first place went to the team called “Jack”.



We then went on cruising through the fjords and visiting glaciers in Isfjorden, before returning our boots and joining the captain’s cocktail. It is captain Remmert Jan Koster’s first trip with Hondius and we very much appreciated his professionalism and abilities to safely navigate through the ice. Time for our farewell dinner.



Day 10: 23rd July 2019

Longyearbyen

GPS position at 0800: 78°14'.61 N, 015°32'.60 E

Wind: S2 Sea State: 1 Weather: Overcast

Air Temp: 3 °C Sea Temp: 8 °C

As our last night onboard was rolling up in the bar, some of us had our last drink and a toast for the great voyage before heading down to the pier and waving good bye to our new friends. The first bus was picking up some guests shortly after midnight to make it on time for the 2 am flight out of Longyearbyen.

Early morning, bright and shine, we were all woken up by our Expedition Leader Adam, leading to the second announcement of the day: our always joyful Hotel Manager Michael, calling us for breakfast in the dining room. As coffee and tea was being poured in our mugs, we knew the adventure was about to finished. A voyage of exploration, discovery and learning was coming to an end, but the memories and incredible sightings will remain with us forever.

The Oceanwide staff and crew offloaded our luggage to the pier, and as we were shuttled to the jetty, the last hugs and goodbyes were spread amongst our fellow travelers. Goodbye, Hondius, see you soon, maybe in the southern seas and Antarctica.



**Thank you all for such a wonderful voyage, for your company,
good humour and enthusiasm. We hope to see you again in the future,
wherever that might be!**

Total distance sailed on our voyage: 1405 nautical miles

Furthest North: 80°00'.15 N, 013°24'.37 E

**On behalf of Oceanwide Expeditions, Captain Remmert Jan Koster,
Expedition Leader Adam Turner, Hotel Manager Michael Frauendorfer
and all the crew and staff, it has been a pleasure travelling with you.**



PHOTOGRAPHY CONTEST 2019

Your chance to win a € 1000 gift voucher for your next polar adventure.

EVERYONE KNOWS A PICTURE IS WORTH A THOUSAND WORDS, BUT DID YOU KNOW THAT YOUR PHOTOS MIGHT NOW ALSO BE WORTH A **€ 1000 GIFT VOUCHER**?

Share your experience!

Did you catch a rare seabird on the fly? Do you have a panorama of the Northern Lights filling the sky? Did you get up close and personal with a penguin? Did you capture a look of awe or wonder on a fellow passenger's face?

If you've been a passenger on any one of our past voyages we want to see your pictures.

You're free to send in as many pictures as you wish. The best pictures are the ones that capture what it's like to take one of our special expeditions to the remote and beautiful ends of the Earth.



PRIZES



€ 1000

GIFT VOUCHER

for Oceanwide Expeditions



€ 500 gift voucher

for Oceanwide Expeditions



€ 250 gift voucher

for Oceanwide Expeditions

UPLOAD YOUR PHOTO AT

WWW.OCEANWIDE-EXPEDITIONS.COM/GALLERY

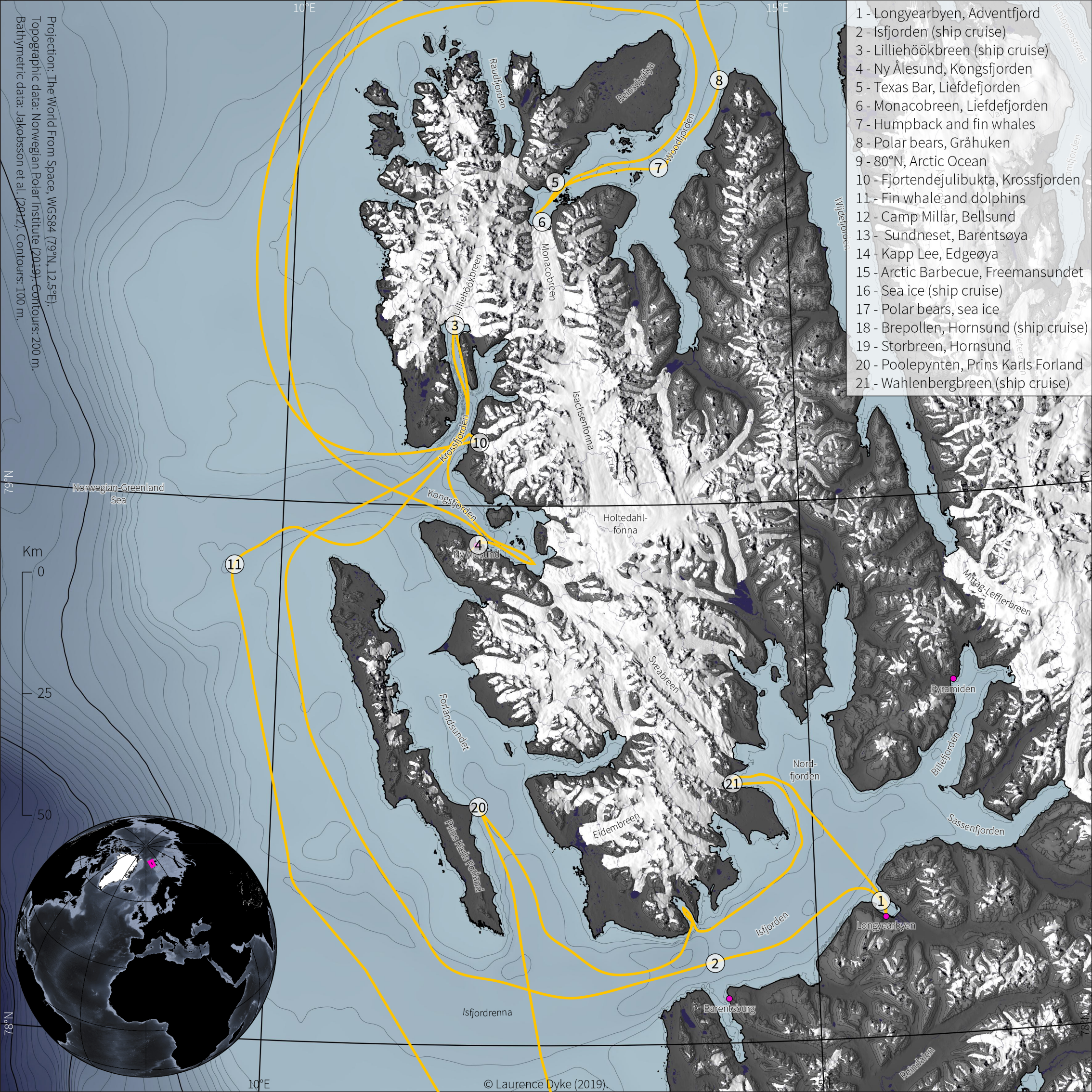
The size of your photo should be between 2MB and 8MB. Our lucky winners will be contacted by e-mail and Facebook by 31 October 2019. The photography contest runs from 16 May 2019 until 30 September 2019.

Read the terms and conditions of the contest on www.oceanwide-expeditions.com/page/contest-terms

Birds and Mammals of Svalbard 14 July - 23 July, 2019

English Name	Latin	German	French	中文	Dutch	14	15	16	17	18	19	20	21	22	23
Great Northern Diver	<i>Gavia immer</i>	Eistaucher	Plongeon Imbrin	白嘴潜鸟	Ijsduiker										
Red-throated diver	<i>Gavia stellata</i>	Sternaucher	Plongeon catmarin	红喉潜鸟	Roodkeelduiker		X				X				
Northern Fulmar	<i>Fulmarus glacialis</i>	Eissturmvogel	Fulmar boréal	北方暴风鹱	Noordse stormvogel	X	X	X	X	X	X	X	X	X	X
Bean Goose	<i>Anser fabalis</i>	Saatgans	Oie des moissons	豆雁	Taigarietgans										
Pink-footed Goose	<i>Anser brachyrhynchus</i>	Kurzschnebelgans	Oie à bec court	粉脚雁	Kleine rietgans		X		X		X				
Barnacle Goose	<i>Branta leucopsis</i>	Weisswangengans	Bernache nonnette	白颊黑雁	Brandgans		X	X	X	X	X				
Brent Goose	<i>Branta bernicla</i>	Ringelgans	Bernache cravant	黑雁	Rotgans										
Mallard	<i>Anas platyrhynchos</i>	Stockente	Canard colvert	绿头野鸭	Wilde eend										
Common Eider	<i>Somateria mollissima</i>	Eiderente	Eider commun	欧绒鸭	Eidereend	X	X	X	X	X		X			X
King Eider	<i>Somateria spectabilis</i>	Prachteiderente	Eider à tête grise	王绒鸭	Konings eider		X								
Steller's Eider	<i>Polysticta stelleri</i>	Scheckente	Eider de Steller	小绒鸭	Stellers eider										
Long-tailed Duck	<i>Clangula hyemalis</i>	Eisente	Harelde boréale	长尾野鸭	Ilseend						X				X
Rock Ptarmigan	<i>Lagopus mutus hyperboreus</i>	Alpenschneehuhn	Lagopède alpin	岩雷鸟	Alpensneeuwhoen										
Ringed Plover	<i>Charadrius hiaticula</i>	Sandregenpfeifer	Grand Gravelot	剑鸻	Bontbekplevier	X									
European Golden Plover	<i>Pluvialis apricaria</i>	Goldregenpfeifer	Pluvier doré	欧洲黄金鸻	Goudplevier										
Sanderling	<i>Calidris alba</i>	Sanderling	Bécasseau sanderling	三趾鹬	Drieteenstrandloper										
Pectoral Sandpiper	<i>Calidris melanotos</i>	Graubruststrandläufer	Bécasseau tacheté	斑胸滨鹬	Gestreepte strandloper										
Purple Sandpiper	<i>Calidris maritima</i>	Meerstrandläufer	Bécasseau violet	紫滨鹬	Paarse strandloper	X					X			X	X
Red Knot	<i>Calidris canutus</i>	Knutt	Bécasseau maubèche	红腹滨鹬	Kanoetstrandloper										
Dunlin	<i>Calidris alpina</i>	Alpenstrandläufer	Bécasseau variable	滨鹬	Bonte strandloper										
Whimbrel	<i>Numenius phaeopus</i>	Regenbrachvogel	Courlis corlieu	中杓鹬	Regenwulp										
Common Redshank	<i>Tringa totanus</i>	Rotschenkel	Chevalier gambette	红脚鹬	Tureluur										
Ruddy Turnstone	<i>Arenaria interpres</i>	Steinwälzer	Tournepieuvre à collier	红翻石鹬	Steenloper										
Grey Phalarope	<i>Phalaropus fulicarius</i>	Thorshühnchen	Phalarope à bec large	灰瓣蹼鹬	Rosse franjepoot										
Red-necked Phalarope	<i>Phalaropus lobatus</i>	Odinshühnchen	Phalarope à bec étroit	红领瓣足鹬	Grauwe franjepoot										
Pomarine Skua	<i>Stercorarius pomarinus</i>	Spatelraubmöwe	Labbe pomarin	中贼鸥	Middelste jager										
Arctic Skua	<i>Stercorarius parasiticus</i>	Schmarotzerraub-möwe	Labbe parasite	短尾贼鸥	Kleine jager			X	X	X	X		X	X	
Long-tailed Skua	<i>Stercorarius longicaudus</i>	Falkenraubmöwe	Labbe à longue queue	长尾贼鸥	Kleinste jager										
Great Skua	<i>Stercorarius skua</i>	Skua	Grand Labbe	大贼鸥	Grote jager										
Sabine's Gull	<i>Xema sabini</i>	Schwalbenmöwe	Mouette de Sabine	萨宾氏鸥	Vorkstaartmeeuw										
Black-headed Gull	<i>Larus ridibundus</i>	Lachmöwe	Mouette rieuse	红嘴鸥	Kokmeeuw										
Common/Mew Gull	<i>Larus canus</i>	Sturmmöwe	Goéland cendré	海鸥	Stormmeeuw										
Glaucous Gull	<i>Larus hyperboreus</i>	Eismöwe	Goéland bourgmestre	北极鸥	Grote Burgemeester		X	X	X	X	X	X	X	X	X
Iceland gull	<i>Larus glaucooides</i>	Polarmöwe	Goéland arctique	冰岛鸥	Kleine burgemeester										
Herring Gull	<i>Larus argentatus</i>	Silbermöwe	Goéland argenté	银鸥	Zilvermeeuw										
Lesser black-backed Gull	<i>Larus fuscus</i>	Heringsmöwe	Goéland brun	小黑头鸥	Kleine mantelmeeuw										
Great black-backed Gull	<i>Larus marinus</i>	Mantelmöwe	Goéland marin	大黑头鸥	Grote mantelmeeuw										
Kittiwake	<i>Rissa tridactyla</i>	Dreizehenmöwe	Mouette tridactyle	三趾鸥	Drieteenmeeuw	X	X	X	X	X	X	X	X	X	X
Ross' Gull	<i>Rhodostethia rosea</i>	Rosenmöwe	Mouette de Ross	楔尾鸥	Rossmeeuw										
Ivory Gull	<i>Pagophila eburnea</i>	Elfenbeinmöwe	Mouette blanche	象牙鸥	Ivoormeeuw		X						X	X	
Arctic Tern	<i>Sterna paradisaea</i>	Küstenseeschwalbe	Sterne arctique	北极燕鸥	Noordse stern	X	X	X	X	X	X	X	X	X	X
Common Guillemot	<i>Uria aalge</i>	Trottellumme	Guillemot de Troil	崖海鸦	Zeekoet										
Brünnich's Guillemot	<i>Uria lomvia</i>	Dickschnabellumme	Guillemot de Brünnich	厚嘴海鸦	Dikbekzeekoet		X	X	X	X	X	X	X	X	
Black Guillemot	<i>Cepphus grylle</i>	Grylleteiste	Guillemot à miroir	白翅斑海鸕/黑海鸕	Zwarte zeekoet	X	X	X	X	X	X	X	X	X	X
Little Auk	<i>Alle alle</i>	Krabbentaucher	Mergule nain	小海雀	Kleine alk	X	X			X	X				

- 1 - Longyearbyen, Adventfjord
- 2 - Isfjorden (ship cruise)
- 3 - Lilliehöökbreen (ship cruise)
- 4 - Ny Ålesund, Kongsfjorden
- 5 - Texas Bar, Liefdefjorden
- 6 - Monacobreen, Liefdefjorden
- 7 - Humpback and fin whales
- 8 - Polar bears, Gråhuken
- 9 - 80°N, Arctic Ocean
- 10 - Fjortendejulibukta, Krossfjorden
- 11 - Fin whale and dolphins
- 12 - Camp Millar, Bellsund
- 13 - Sundneset, Barentsøya
- 14 - Kapp Lee, Edgeøya
- 15 - Arctic Barbecue, Freemansundet
- 16 - Sea ice (ship cruise)
- 17 - Polar bears, sea ice
- 18 - Brepollen, Hornsund (ship cruise)
- 19 - Storbreen, Hornsund
- 20 - Poolepynten, Prins Karls Forland
- 21 - Wahlenbergbreen (ship cruise)



Adam Turner, FRGS - Expedition Leader



Adam was brought up in countryside of Essex, England. He began sailing at the age of 9 and began working on the local river aged 12 before leaving school.

By 16 he had a small fishing boat and was working on boatyards and taking tourists to see the local seal colonies as well as helping out on the local Lifeboat.

Adam then joined HM Forces and was posted to Northern Ireland and in the UK, he also served in Kenya as a boat operator. In 2002 Adam joined the Police and spent several years on a specialist unit working across the

UK with his search dog Charley.

Since being a young lad Adam had dreamt of working in the Antarctic like his Uncle had done in the late 1980's, and in 2014 Adam left the Police to work as Boating Officer for British Antarctic Survey at King Edward Point, South Georgia where he spent just over a year.

Adam studied at Middlesex University and often gives lectures on history, in 2017 he was elected as a Fellow of the Royal Geographical Society, and he now works as guide and Consultant.

Adam holds a commercial masters certificate and instructs in several marine disciplines, he enjoys diving, climbing, kayaking and outdoor activities.

Florence Kuyper - Assistant Expedition Leader



Florence is a cosmopolitan with a passion for the polar regions, remote nature, deserts, history and nomadic people around the globe. After receiving her Masters degree in Educational and Organisational Psychology in the Netherlands, Florence had a European career as a consultant-manager in the field of social affairs.

In 2004 she went for the first time to the big white desert 'Antarctica' and her passion for this continent has drawn her back 'South' ever since.

But Florence can also do extreme heat: she crossed 1,200 km of harsh Mongolian desert on foot, together with a team and her Bactrian camel. Florence lived on a British historical base on the Antarctic Peninsula "Port Lockroy" where she worked as Base Leader. She also works on sailing yachts in the Arctic and Antarctica. Florence has worked as a guide and expedition leader in both polar regions since 2012 and she looks forward to sharing her knowledge and unlimited passion for the polar regions with you.

Shelli Ogilvy - Assistant Expedition Leader



Shelli Ogilvy was born and raised in Alaska. She grew up in a rural town separated from the road system, with glaciers, whales, bears and big mountains as her backyard.

Shelli has been guiding as a wilderness leader since 1997. She has been working as an expedition guide in the polar regions of both Antarctica and Arctic beginning in 2007 through the present. Master in Sea Kayak and Zodiac driving/ Marine Biologist and wilderness Naturalist. When not guiding on ships, she works taking small groups by sea kayak out into wilderness

settings for overnight camping trips in Alaska.

Shelli obtained her Bachelors of Science in 2001 with a major in Marine Biology. She has worked with several different research groups, primarily studying identification and biology of humpback and gray whales off the North Pacific Coast, as well as many observational studies in South Atlantic/ Pacific and Antarctic waters.

Her passion for spending time over the years in Polar Regions makes her more aware of changing environments, ice, glaciers, and distribution of wildlife. Her other background includes exploring the waters of the North and South via sea kayak. Needless to say, being on the ocean is one the places she best calls "home".

When not guiding, Shelli is an accomplished artist. She published an illustrated bird book in 2009 and is shown in several small galleries. Other interests include working on her small cabin in Alaska, backcountry skiing, fly-fishing, and above all sharing these beautiful polar landscapes.

Sara Jenner - Expedition Guide



For as long as Sara could remember she has had a passion for travel and searching for the wildest and most remote places on earth.

Back in the UK when she was only 10, she remembers trading in her favourite pink bicycle for the money to start her travel fund. Every birthday and Christmas she added a little more in the kitty and finally, at 18 she realised her dream of diving at the Great Barrier Reef! At that point the travel addiction was born!

Ever since Sara has been travelling the globe in search of wild and remote places and has spent many months volunteering on wildlife conservation projects in a bid to help some of our most iconic and endangered species.

Sara's love of wildlife and the great outdoors has taken her to all seven continents and she has travelled extensively in the polar regions including the Antarctic Peninsula, Falklands, South Georgia, Spitsbergen, Greenland, Iceland, Baffin Island and Canadian High Arctic. Returning to the UK, Sara used this knowledge to work in the travel industry as a polar specialist for several years, until the travel bug hit again, when she decided to swap life on the land for a life at sea and joined the Oceanwide Expedition Team in 2016.

Sara is a keen wildlife photographer and when she is not wrapped up warm in the polar regions she enjoys working as a photographic guide in Botswana, on the beautiful Chobe River and Okavango Delta, so really has a life of two halves.

Laurence Dyke - Expedition Guide



Laurence is from Cornwall in the far southwest of the UK and grew up on the coast, never far from the water and boats. Laurence has a background as a geographer with a special focus in glaciology, a choice inspired by seeing a glacier up close for the first time in the Austrian Alps.

For the last 7 years he has worked in science, both in the UK and Denmark, working to understand how and why huge glacier systems have changed in the past. Laurence first visited the Arctic in 2010 whilst undertaking research for his PhD and was immediately captivated by the wild

landscapes of the high latitudes. His subsequent research has taken him on numerous expeditions to remote areas of Greenland, Svalbard, and Arctic Canada.

Laurence is also a passionate advocate for polar science, when time allows, he produces videos and articles about research from Greenland and the wider Arctic. Laurence lectures in glaciology and geography.

Jerry Zhao - Expedition Guide



Soon after completing his degree in Business Administration at Drexel University in Philadelphia, Jerry began a career in the travel industry. Jerry first started as an international travel consultant and tour leader and led exclusive small high-end guests throughout Europe. He then became partner in an international travel consulting firm and focused on employee training.

Searching for more adventure, Jerry joined a Chinese travel agency specializing in Polar regions as a project manager. He has travelled to the North Pole several times on the Russian ice breaker and has organized yacht charters to

Antarctica and along the way he has studied the geography, wildlife and history of the Polar regions

Pablo Brandeman - Expedition Guide



Born and raised in Argentinean northern Patagonia, now living in Ushuaia, Tierra del Fuego, grew up with a Fishing Guide dad that pushed me not only into adventure activities but also into guiding and the tourism industry. I love Skiing, Snowboarding, Skateboarding, Surfing, Paragliding, Kitesurfing, Climbing, Mountaineering, Boat driving and many other thrilling activities! I am a well-seasoned Antarctic guide, having worn all the different hats as an expedition staff, with over 150 trips to the southern continent... but just a few to the Arctic region! Totally excited about this

experience and looking forward to seeing Polar Bears, Walrus and Puffins!

Leonard Dewaele - Expedition Guide



I am a paleontologist, specialising in the evolution of seals through time.

Working at this interface between biology and geology, and also oceanography and atmospheric studies, I have a good understanding of all the natural processes that are going on around us. Feel free to ask me anything about that and I'm there to answer your questions!

My love for exploring places and finding my own limits ignited at the age of 10, after hearing a family friend talk about his own adventures and his experiences with the high degree of freedom and life-changing interactions with new environments and cultures all around the globe.

When I am not travelling around the world, I work as a researcher at George Mason University in Virginia and at the Smithsonian National Museum of Natural History in Washington, D.C., studying the skeletons of both living seal species and groups that went extinct a long time ago.

When not travelling or working as a researcher, you can find me on trails, training for my next 50 mile, 100 km, 100 mile or 200 mile trail running race.

Pierre Gallego - Expedition Guide



Pierre is a veterinarian specialised in marine mammal medicine. He has been working in the field of marine biology for 18 years, and has been organising marine mammal research internships around the world since 2004. He represents the Government of Luxembourg at the International Whaling Commission and CCAMLR, and works with numerous international NGOs to promote marine mammal conservation and to fight cetacean captivity.

He is currently carrying out his PhD with the Oceanology Lab of the University of Liege, Belgium. His PhD thesis deals with pollutants and stable isotopes in humpback whales off Ecuador and Mozambique. He is a keen birdwatcher and enjoys photography. The ocean is his passion, and water is his element!

Mariela Cornejo - Expedition Guide



Mariela was born in Ushuaia, the southernmost city in the world, and lived through the process of her own land becoming the Province of “Tierra del Fuego”. Living at “the door to Antarctica” and reading stories about Nordenskjöld and the local hero, Sobral, she couldn’t avoid dreaming about adventuring even further South.

Raised far away from the city, out in the central valley of the South Andes range, it was a given to practice all kind of winter sports. Nordic skiing, Splitboarding, Biathlon, Skijoring, Mushing and Ice skating, just to name a few. She has participated in Biathlon World championships and also took part in several international competitions, giving her the opportunity to travel around the world. During summers, she likes to do all kind of outdoor activities including camping in the mountains, hiking, paddling, kitesurfing and climbing.

Her first season in Antarctica was in 2014, and since then, the polar bug has infected her in such a way she can’t stop returning season after season. History, wildlife and geology of the polar regions grew as an interest, leading her to start planning her first season to the opposite region. Even though she used to spend winters in Ushuaia guiding snowmobile excursions through the forests of Tierra del Fuego and leading groups on snowshoeing expeditions and cross-country skiing adventures, this boreal summer she’s excited to be adventuring on her first Arctic season. Join her on a Zodiac Cruise, walk around the beach or out on deck to share some stories and look out for amazing wildlife!

Meike Sjoer - Expedition Guide



From early on Meike has been a passionate naturalist and traveller who just loves birds.

At the age of 7 she bought her first bird book. Being outdoors all the time, she wanted to learn more about the amazing creatures she encountered. Investigating and learning about nature and wildlife has been a passion ever since.

Meike has a master degree in film and television from the University of Utrecht. For the last 25 years she has been working as a television director. Her stories involve nature, wildlife and environmental topics. If not travelling she is directing the prime-time wildlife television program Vroege Vogels.

When time permits, she volunteers as a nature guide for the Dutch institute for nature and education. As a teenager Meike started sailing the oceans but her true love for the life in the oceans began 14 years ago when she started working with Sea Shepherd on the mediateam.

Meike is thrilled to be your guide on this trip, and looking forward to sharing knowledge and the passion for this magical polar world with you.

Szymon Niezabitowski - Expedition guide



Szymon was born in Cracow, Poland. He studied Biology and Geography in Cracow where he received his graduate degree in “Faculty of Biology and Earth Sciences”. His final thesis was about Volcanic Soils on Iceland.

After he finished his studies, he joined Polish Academy of Sciences and worked for the Institute of Systematics and Evolution of Animals, where he was a guide and researcher on exotic animals.

Szymon began guiding in the Arctic in 2016 on Spitsbergen and since then has also led

Orca whale trips in North Norway.

From the earliest years of his life he is a passionate naturalist with a special interest in the geography and the wildlife of the higher latitudes.

Melissa Scott - Expedition Guide



In 1987, Melissa moved to the mountains of Montana and never looked back. She completed her degree in Environmental Science Education and has dedicated her career to inspiring conservation through relevant, first-hand encounters with the natural world.

She is a dynamic and enthusiastic professional naturalist/guide with over 28 years of experience leading natural history and cultural trips around the globe. While she truly enjoys every region in which she guides, whether deserts or mountains or oceans, the arctic marine environment is probably top on her list.

The complexity and richness of this system is incomparable, supporting such iconic creatures as polar bear, arctic fox, bowhead, beluga and narwhal along with the vast abundance of seasonal migrants. So, whether exploring the arctic wilderness of Svalbard & eastern Greenland, the bamboo forests of China, the nursery lagoons of Baja's grey whales, or the wilds of the U.S. and Canada, you can be sure she is excited to share her knowledge and enthusiasm with you!

Bart Stepien - Ship Doctor



Bart has been at sea for seven years now. He has been providing his medical services to companies like Cunard Line, Carnival, and Disney.

He took an active part in various medical operations including boat and helicopter disembarkations all around the world (in Australasia, Africa, Europe, both Americas and even Easter Island).

He shares his time ashore between various medical conferences and courses, hospital ER shifts, rock climbing, scuba/free diving and occasional skydiving.



OCEANWIDE

EXPEDITIONS

Around Spitsbergen

14th -23rd July 2019

Friday 14th July

Boarding and departure from Longyearbyen

WELCOME ABOARD!

*For the arriving passengers: luggage will be delivered to your cabin as soon as possible.
Please check to make sure you have received all your luggage!*

**** Tea and coffee are always available in the lounge bar on deck 5 ****

- | | |
|--------|-------------------------------------------------------------------------------------------------------------------------------------------------------------------------------------------------------------------------------------------------------------------------|
| ±17.30 | Welcome briefing in the lounge (deck 5).
Expedition leader Adam and hotel manager Michael will introduce you to the life on board the Hondius.
This will be followed by a mandatory 'Safety at Sea' briefing for ALL passengers. Presence will be checked. |
| ±18.00 | Departure of the Hondius. Please stay off the bridge during this time, After departure the mandatory safety drill will take place. Please listen to the announcements. |
| 19.30 | Dinner is served in the dining room (deck 4). |
| ±21.15 | Collection of rubber boots from Deck 3, we will call you by deck so please listen for announcements. |

After dinner, feel free to relax in the lounge, enjoy the scenery and discover the ship...

Please note that tonight we will be sailing into the open sea. Take your seasickness medication before you really feel the movements of the vessel. Make sure that all your belongings are put away safely and that doors and drawers in your cabin are tightly closed. Walk slowly on the ship, always use one hand for yourself and one for the ship and beware of your fingers because of doors jamming!



OCEANWIDE

EXPEDITIONS

Around Spitsbergen

14th -23rd July 2019

Monday 15th July

Safety Briefings and landing at Ny Alesund

- 07:15 Wake-up call
- 07:30 Breakfast is served in the restaurant on deck 4
- 09:30 Staff introduction followed by **mandatory** AECO (Association of Arctic Expedition Cruise Operators) and zodiac briefing in the lounge on deck 4
- 12:00 Lunch is served in the dining room
- 14:00 Landing at Ny Alesund
- RED and BLUE groups will be called first, followed by YELLOW and GREEN
- Ny Alesund was once home to a large coal mining settlement, and has an array of flora, fauna and history. Ny Alesund is now home to many international research institutions, using it as a base for Arctic research.
- There is a shop in the settlement that accepts Kroner, Euros and card payments.
- Hikes will depart from the statue at:
- | | |
|-----------------|-----------------------------------|
| 14:30 | Long hike (3 hours) |
| 15:30 and 16:00 | Guided walk outside of settlement |
| 17:45 | Last zodiac return to ship |
- Please keep to paths and roads while in the settlement.
- 18:30 Recap and Captains cocktail in the lounge
- 19.00 Dinner is served in the dining room (deck 4).



OCEANWIDE

EXPEDITIONS

Around Spitsbergen

14th -23rd July 2019

Wednesday 17th July

14. Juli Bukta landing/cruise and Englesbukta landing

- 07:00 Wake-up call
- 07:30 Breakfast is served in the restaurant on deck 4

14. Juli Bukta

- 08:30 RED and BLUE groups will go to the zodiacs and then land at 14. Juli Bukta, then go for a zodiac cruise.
- 09:00 YELLOW and GREEN groups will go to the zodiacs for a cruise and then land at 14. Juli Bukta.
- 12:30 Lunch is served in the restaurant

Englesbukta

- 14:00 YELLOW and GREEN groups will go to zodiacs and land at Englesbukta.
- 14:30 +/- RED and BLUE groups will go to zodiacs and land at Englesbukta.
- 18:30 Re-cap in the lounge
- 19:00 Dinner is served in the dining room (deck 4).



OCEANWIDE

EXPEDITIONS

Around Spitsbergen

14th -23rd July 2019

Thursday 18th July

Landing at Camp Millar

07:30 Wake-up call

08:00 Breakfast is served in the restaurant on deck 4

Camp Millar

08:30 YELLOW and GREEN groups will go to the zodiacs and then land.

09:00 RED and BLUE groups will go to the zodiacs for a cruise and then land.

13:00 Lunch is served in the restaurant

15:00 Historical lecture about the pioneering Dutch explorer Willem Barents, by Florence in the lecture room.

16:30 Lecture by a member of Expedition Staff, to be confirmed depending on wildlife sightings!

18:30 Recap and plans for tomorrow in the lounge

19:00 Dinner is served in the restaurant



OCEANWIDE

EXPEDITIONS

Around Spitsbergen

14th -23rd July 2019

Friday 19th July

Landings at Kapp Lee and Sundneset

- 07:00 Wake-up call
- 07:30 Breakfast is served in the restaurant on deck 4

Kapp Lee

- 08:30 Long hikers leave the ship
- 09:00 Medium hikers leave the ship
- +/- 09:15 Short hike leaves the ship

- 12:30 Lunch is served in the restaurant

Sundneset

- 14:00 Long hikers leave the ship
- 14:30 Medium hikers leave the ship
- +/- 14:45 Short hike leaves the ship
- 18:30 Daily re-cap and plans for tomorrow
- 19:00 A special Arctic dinner is served



OCEANWIDE

EXPEDITIONS

Around Spitsbergen

14th -23rd July 2019

Friday 19th July

Landing at Sundneset

- | | |
|-------|-------------------------------------------------|
| 07:00 | Wake-up call |
| 07:30 | Breakfast is served in the restaurant on deck 4 |

Sundneset

- | | |
|-----------|-----------------------------------|
| 09:15 | Long hikers leave the ship |
| 09:45 | Medium hikers leave the ship |
| +/- 10:00 | Short hike leaves the ship |
| 13:00 | Lunch is served in the restaurant |

Expedition Afternoon!

**Please enjoy the views from the outer decks and
Listen for Announcements**

- | | |
|-------|-------------------------------------|
| 18:30 | Daily re-cap and plans for tomorrow |
| 19:00 | A special Arctic dinner is served |



OCEANWIDE

EXPEDITIONS

Around Spitsbergen

14th -23rd July 2019

Saturday 20th July

Ice day..

07:30 Wake-up call

08:00 Breakfast is served in the restaurant on deck 4

Pack Ice of the Hindlopen Strait

Please come out on deck and enjoy the majesty of the pack ice and help look for the King of the Arctic!!

12:00 Lunch is served in the restaurant

This is a true expedition day spending time in areas looking for wildlife, subject to weather conditions there may be lectures by staff which we will inform you of via the tannoy system.

Please listen for announcements

18:30 Plans for tomorrow and daily re-cap

19:00 Dinner is served in the restaurant



OCEANWIDE

EXPEDITIONS

Around Spitsbergen

14th -23rd July 2019

Sunday 21st July

At sea and Hornsund

07:45	Wake-up call
08:00	Breakfast is served in the restaurant on deck 4
10:00	Plans for tomorrow followed by: Polar bear lecture in the lounge by Sara
12:30	Lunch
PM	AS DETAILED AT MORNING PLANS
18:30	Daily re-cap and plans for tomorrow
19:00	Dinner is served in the restaurant



OCEANWIDE

EXPEDITIONS

Around Spitsbergen

14th -23rd July 2019

Tuesday 23rd July

Longyearbyen

22:00 Alongside Longyearbyen

00:30 GUEST DISEMBARKATION

Longyearbyen

06:45 Wake-up call ALL LUGGAGE OUT OF CABINS

07:00 Breakfast is served in the Restaurant on deck 4

Longyearbyen

08:30 GUEST DISEMBARKATION **VIA ZODIAC**

DON'T FORGET YOUR WATERPROOFS!

PLEASE LISTEN TO ANOUNCEMENTS

PLEASE IDENTIFY YOUR LUGGAGE ON THE
PIER TO BUS OR LUGGAGE TRUCK

NO TAG = LUGGAGE TRUCK TO AIRPORT



OCEANWIDE

EXPEDITIONS

Around Spitsbergen

14th -23rd July 2019

Monday 22nd July

Poolepynten and Alkhornet

- 07:00 Wake-up call
- 07:30 Breakfast is served in the restaurant on deck 4

Landing at Poolepynten

- 08:30 RED and BLUE groups to zodiacs
- 10:00 YELLOW and GREEN groups to zodiacs
- 12:00 Lunch is served in the restaurant

Landing at Alkehornet

- +/- 14:30 YELLOW and GREEN groups to zodiacs
- +/- 16:00 RED and BLUE groups to zodiacs
- 18:15 Captain's Farewell Cocktail and Expedition Slideshow in the lounge
- 19:00 Dinner is served in the restaurant