



Around Spitsbergen

on board

m/v Hondius

July 23rd – August 1st 2019



The MV *Hondius* was built in 2019 in Brodosplit, Croatia, as an expedition vessel for Oceanwide Expeditions. *Hondius* is 107.60m long, 17,60m wide and has a maximum draught of 5.3m and has an exceptionally high Ice class of PC6, a top speed of 15 knots and 3 diesel generators. The *Hondius* sails on LSMGO. Now the ship is sailing as a 176-passenger vessel with 83 cabins. Our beautiful, modern vessel carries 369m³ of fresh water and has a water plant producing 70m³ per day. In many ways, the *Hondius* is the perfect vessel for a true polar adventure!

Captain Remmert Jan Koster

and his international crew of 68

including

First Officer:	Matei Mocanu	[Romania]
Staff Officer:	Toni Salo	[Finland]
Second Officer:	Diederik Scholten	[The Netherlands]
Third Officer:	Igor Nazarov	[Russia]
Chief Engineer:	Sebastian Alexandru	[Romania]
Hotel Manager:	Michael Frauendorfer	[Austria]
Assist. Hotel Manager:	Dejan Nikolic	[Serbia]
Head Chef:	Sean Steele	[Canada]
Sous Chef:	Ivan Yuriychuk	[Ukraine]
Ship's Physician:	Bart Stepien	[Poland]

and

Expedition Leader:	Florence Kuyper	[The Netherlands]
Assist. Expedition Leader:	Pablo Brandeman	[Argentina]
Assist. Expedition Leader:	Shelli Ogilvy	[Alaska]
Expedition Guide:	Hélène Deméringo	[France]
Expedition Guide:	Laurence Dyke	[Great Britain]
Expedition Guide:	Jerry Zhao	[China]
Expedition Guide:	Claudio Ghiglione	[Italy]
Expedition Guide:	Mark Vogler	[USA]
Expedition Guide:	Pierre Gallego	[Luxemburg]
Expedition Guide:	Mariela Cornejo	[Argentina]
Expedition Guide:	Mengxiao Liu	[China]
Expedition Guide:	Johnny Yeh	[Taiwan]
Expedition Guide:	Szymon Niezabitowski	[Poland]
Expedition Guide:	Melissa Scott	[USA - Montana]

We welcome you on board!

Day 1: 23rd July 2019

Embarkation, Longyearbyen

GPS position at 0800: 78°13'.62 N, 015°38'.50 E

Wind: SW3 Sea State: calm Weather: overcast

Air Temp: +6 °C Sea Temp: +9 °C

The sun was shining as the planes landed in Longyearbyen, our main harbour where our adventure would begin later on that afternoon.

Pablo and Mariela were waiting at the airport for the last group to arrive on the afternoon flight, so we could have a quick walk around downtown before heading to the town's jetty. Hondius, our brand-new ship, home for the next ten days, was at anchor in the bay, and we needed to be shuttled by Zodiac.



We gathered at the local pier for a safety briefing by Melissa on “How to don a lifejacket”, followed by instructions by Laurence on how to board a small boat from a floating jetty. We were already professionals by the time we arrived to the shell doors, where we had the crew and staff waiting for us and guiding us to reception for the check in.

After being shown to our cabins by the Hotel team, we headed to the outer decks to enjoy the view of the town. Longyearbyen, an old mining settlement founded by John Munroe Longyear from the US, has attracted explorers of different nationalities in search of minerals, seals, whales or the conquest of the furthest North latitudes. Now it was our turn to become modern-day expedition sailors and embark on an adventure of discovery.





After a mandatory safety briefing delivered by our Hotel Manager Michael, and the Chief Officer Matej, followed by a safety drill, we were ready for a delicious first dinner in the dining room while enjoying the view. Did I mention that this was an “Expedition” cruise? We had to delay dinner as a pod of Beluga showed up right before dinner. More than 100 individuals were swimming around the vessel which distracted us and kept us out on deck for a good 40 minutes.

Now we were ready to enjoy our first meal onboard, and head to bed after a few more pictures on our way out of Isfjord. What a great start of a voyage!



Day 2: 24th July 2019

Lillehöökreen and Ny-Ålesund

GPS position at 0800: 79°19'.4 N, 011°36'.6 E

Wind: NNW3 Sea State: calm Weather: Partly cloudy

Air Temp: +7 °C Sea Temp: +7 °C



We received our first wake-up call onboard at 7:30 am to find ourselves in Lilliehöökfjord, sailing under sunny skies towards one of the scenic highlights of this area, Lilliehöökreen, the largest glacier in Krossfjord with its 11 km wide, semi - circular ice front. After an 8 am breakfast, most of us headed to the outside decks to photograph and marvel at this natural wonder.

At 9:15am we gathered in the lounge for staff introductions, with a brief story of how each had come to work in the Arctic, followed by the mandatory briefings required to go on zodiac landings - AECO (Association of Arctic Expedition Cruise Operators) Arctic protocol, and zodiac operations. At 11:15am we headed down to Deck 3, where we were assigned our muck boots and life jackets we would need for our landings, during the course of the voyage. Our expedition had truly begun.



Over lunch we sailed into Kongsfjorden, to be in position for our afternoon landing at Ny-Ålesund, the northern most permanent settlement on earth - and the only community in Svalbard not destroyed during WWII. The former coal mining village is now a scientific community operating under the Norwegian Polar Institute research governance.

At 1:30pm the Hondius docked alongside the Ny-Ålesund pier and we began to disembark for a leisurely afternoon roaming amongst the town's historic buildings, visiting the museum, hiking, shopping and mailing postcards home from the northern most post office in the world. The historic village is one of the most significant locations for Arctic exploration and the launch point for numerous expeditions to the North Pole, including Roald Amundsen's 1925 failed attempt in 2 "flying boats", the N25 & N26, and his successful second attempt in the Italian built "air ship" Norge, with American financier Lincoln Ellsworth and Italian ship designer, Umberto Nobile in 1926.



Our lite walks begin in the center of town at the Roald Amundsen bust and took those joining past a flock of Barnacle Geese and their chicks and Eider ducks on the way to "The Mast", the 35-meter mooring mast of the Norge and Nobile's doomed second flight in the airship Italia in 1928.

Those who took the longer hikes continued past the Mast and onto a distant ridge behind the town, which gave magnificent views back down across Kongsfjorden. The lucky hikers on this trip spotted an arctic fox feasting on a Barnacle Goose carcass it had stolen from a Glaucus Gull, and also spotted Harbor Seals and Svalbard Reindeer in the distance.



Back on board, our expedition leader, Flo, gave us a preview of our next day's landings and then introduced our captain, Remmert Jan Koster, who joined us in the observation lounge, to welcome us on board and toast the success of the rest of the voyage with a glass of bubbly.

At 7:00pm we headed for the dining room for a four-course dinner and to share with our fellow travelers, the excitement of our day on expedition at the top of the world.

Day 3: 25th July 2019

Texas Bar, Monacobreen and Moffen Island

GPS position at 0800: 79°36'.4 N, 012°45'.3 E

Wind: SW2 Sea State: Calm Weather: Partly cloudy

Air Temp: +3 °C Sea Temp: +5 °C



On our third day onboard M/V Hondius, we started our morning with delicious breakfast and then got ready for our first excursion of the day. In this opportunity, we visited Texas Bar. A trapper's hut, built in 1929 and used for decades by hunters, and nowadays, belonging to the Syssellmannen, the government and police force of Svalbard, who uses it for logistics and snowmobile trips from Longyearbyen.

The excursion started with the long hikers landing on a distant beach, and circling over the mountains to reach Texas Bar. The rest of us landed straight in front of the hut, and took a shorter hike to have an overview of the bay and glacier that sits north east of the landing site. By the end of our visit, some of us were brave enough to take a polar plunge! An invigorating experience that we will certainly never forget.





As we had lunch, the ship was repositioned a couple of miles into the bay, where zodiacs were dropped and shortly after lunch, we went for a cruise through the ice in the bay in front of Monaco Glacier.



Here we were able to enjoy the experience of driving through the brash ice, look at some seals that were swimming around the boats and Great Skuas, Arctic Terns and Kittiwake Gulls that were feeding in the productive waters of the bay.

After our afternoon expedition, we were ready to get back to the ship for a recapitulation of the day, and briefing for tomorrow's activities. Here the plan to visit the pack ice was revealed, with the amazing possibilities of wildlife that this implies. After dinner, we thought our day was over, but our expedition team had an extra activity, a visit to the remote island of Moffen.



beautiful light that embellished the horizon.

Shortly after 21:45 hours, Moffen revealed itself in the distance and as we were approaching to our closest point, we were able to spot the sand bank and the Walrus haul outs, together with some seals swimming along the coast line. We spent a good 45 minutes watching the biggest pinniped in the Arctic go in and out of the water, the birds flying around including the Northern Fulmars displaying their soaring pattern, and the



It was now time to pay a visit to Jake and Rolando at the bar before heading back to our cabins for a good rest before our next adventure in the pack ice.

Day 4: 26th July 2019

Pack Ice on the search of Polar Bears

GPS position at 0800: 80°36'.1 N, 017°05'.0 E

Wind: ENE2 Sea State: calm/ice Weather: Overcast

Air Temp: +0 °C Sea Temp: +4 °C



Very early morning, the expedition guides are already on the bridge looking for bears in the ice around 6 o'clock.

Around 7:40, the first bear is spotted, the ship slowly sails towards it while the passengers are having breakfast. This bear is not in a good shape, it is in between grade 1 to 2, so the ship stayed quite far away. The bear walked a few steps, just laid down for the rest of the time. We left it along after a short while, but the day is still early.



Just before noon, another bear showed up, we spotted the bear far away, it was very interested in the ship, and came straight to it swimming. Surprisingly the bear swam around the ship, climbed up on the ice floe. People were looking at the bear and the bear was looking at the people too. While the bear swam around the ship, everyone walked around the ship with the bear quietly. The hotel department pushed back lunch

for everyone so we could enjoy the time of this amazing encounter with this amazing bear. Thank you, hotel team.

After the nice meetings of the morning and a good lunch the expedition staff decided to move the ship in another area, always into the sea ice, to try to find other bears or spot other wildlife. After a couple of hours, we spotted another bear but unfortunately was far away from the ship and after few times we lost it from the bridge even if all the staff members were looking at it. However, we spotted another bear, this time a big specimen, which was having a meal



with rests of seal. For this reason, we decided to stay a little bit away from the animal and give to it the possibility to finish the meal. At the end of it the bear moved away, in opposite direction of the ship, and we leaved the site.



After our amazing day in the ice with a lot of bears we get back to the lounge for our daily/briefing for the tomorrow's activities. After dinner, we thought our day was over, but our expedition leader announced in the PA system the presence of... another bear! This meeting was completely unexpected and most of the people were almost sleeping. However, thanks to the quick

communication in the system, almost all the people have the possibility to see the bear that at this time was eating a seal on the sea-ice.

After another incredible meeting, super happy for the day, all the people onboard went to sleep in order to be ready for the next expedition day... Thank you very much Arctic!!!



Day 5: 27th July 2019

Alkefjellet and Faksevågen

GPS position at 0800: 79°36'.0 N, 018°29'.5 E

Wind: N6 Sea State: slight Weather: overcast

Air Temp: +7 °C Sea Temp: +6 °C

At 7 o'clock in the morning, our expedition leader woke up us, and together with weather conditions we heard also information about our location and for sure it was special – Alkefjellet. Magnificent bird cliffs with over 60.000 breeding pairs of Brunnich's guillemots.



Already from the ship we could admire this outstanding wall of basalt and marble and thousands of birds flying around, but the best part waited for us after breakfast during the zodiac cruise.



During breakfast, weather conditions starting to change, wind picked up a bit in strength and waves grew up. The expedition team together with the bridge assessed conditions and decided to go ahead with the first round of cruises, and already at 8:30 we were ready to board the zodiacs at the shell doors.

Claudio Ghiglione - Riftia.eu

Boarding boats from the shell doors was a little bit challenging for some of us, who enjoyed the view from the ship, but sighting of the cliff worth every effort. From the distance, the Guillemots in the sky looked like mosquitoes during a hot summer in the tropics, and even more of them sitting on the high cliffs side by side, feather to feather, in tens of thousands.



During the zodiac cruise, we could also see foxes trying to catch birds on slopes covered with lush green grass. Unfortunately, wind and swell raised even more and we had to come back earlier and cancel the second cruise. The expedition team rushed to the office for planning the following activities and offered us a fantastic documentary movie about predators in the Arctic, showcased in the lecture room.



During lunch, Captain and Officers on watch repositioned Hondius to Faksevågen, located in Lomfjorden. By then, skies finally cleared up and we could make a landing inside the beautiful bay surrounded with high plateaus and valleys filled with old moraines.

After a day full of activities and excitements, Michael, our Hotel Manager, invited us for a special arctic dinner – bbq on the outside deck! And together with dancing rhythms of music we could drink and eat and finish the day with a huge smile.



Day 6: 28th July 2019

Palanderbukta and sailing South-West along Bråsvellbreen

GPS position at 0800: 79°36'.2 N, 020°42'.7 E

Wind: NW4 Sea State: smooth Weather: Partly cloudy

Air Temp: 8°C Sea Temp: 7°C



After yesterday's reminder that arctic weather conditions are a big part of expedition cruising life, it was a pleasure to wake up this morning to calmer winds and sunny skies. We had traveled overnight to Palanderbukta, a beautiful fjord on the eastern side of Nordaustland. The second largest island in the Svalbard Archipelago, it hosts the fourth largest ice cap in the world next to Antarctica, Greenland and Novaya Zemlya: the

Austfonna and Vegafonna ice caps. This meant that the area we were to explore is surrounded by ice thus keeping the average temperatures (even in the summer) quite cold.

The first ashore were the Fit, Fast and Furious who headed up the mountain at a brisk pace. They disappeared over the ridge and we did not see them again for a few hours. We later found out that they had covered about 6 km and 200 m in elevation. The rest of us took more time and stopped to learn about the things we were finding along our way, including a few footprints from a polar bear that had passed by not long before.





Along with the frigid climate, the region is considered a polar desert with less than 10 in/25.4 cm of annual moisture and the barrenness of the land is impressive. Those plants we did find were reduced in size but incredibly hardy given the short growing season and severe conditions. One wonderful surprise was the abundance of the Svalbard poppy which has a tendency toward dry ground with lime content. This was the perfect place for them given the geology.

The rock is mostly limestones and sandstones deposited in ancient seas millions of years ago when this land was closer to the equator. Transported here through the action of plate tectonics, the repeated periods of glacial scouring and freeze/thaw cycles have taken their toll on this evolving landscape. We saw interesting examples of frozen ground with areas of sorted rock circles prominent in some areas and rocks fractured by years of weathering scattered throughout our walks. Some of the rocks we found contained a myriad of fossils – mostly bivalves with a few examples of corals as well.



After a lovely lunch back on board, we headed off to the south for a place called Torellneset, a place often visited by walrus. Upon approaching the beach where we expected to find them, we were surprised to find no one home. While a bit disappointing, it was good to know that our team already had other locations in mind for us to have time with these iconic arctic species - returning to Svalbard after early hunting nearly wiped them out of the area completely. So, the decision was made to continue south toward the large glacier front on the southwest side of Nordaustland but again the arctic weather foiled our plans, this time with fog. Ahh, the trials of travel in the polar regions... Well, we shall have a good sleep and hope for new experiences tomorrow.



Day 7: 29th July 2019

Freemansundet and Kapp Lee

GPS position at 0800: 78°11'.5 N, 022°05'.9 E

Wind: SSW4 Sea State: Smooth Weather: Fog

Air Temp: 3°C Sea Temp: 5°C

The day started with a bang, in fact, many bangs, and plenty of crashes too. Overnight the bridge team carefully navigated Hondius through the maze of thick sea ice in Erik Eriksenstredet; the large embayment between Nordaustlandet, Barentsøya, and Edgeøya. Some of us stayed up late, a few woke up extra early, and a really dedicated group of people stayed up the whole night, watching the world of ice go by and spotting a group of walrus hauled out on a large ice floe.



By the time of the wake-up call we found ourselves in the mirror-calm waters of Freemansundet, the narrow strait between the tabular landscapes of Barentsøya, and Edgeøya. The weather was gorgeous, the early morning sun bathed the barren desert landscape in soft yellow light, there was not a breath of wind, and it was a balmy 3°C – a beautiful summer day in the Arctic. As we sat down to breakfast Shelli announced that there were Beluga visible quite close to the ship on the port side; we caught a couple of

glimpses of these reclusive Arctic whales from the dining room windows. We headed through the strait bound for our morning destination, Kapp Lee. As we rounded the corner into Storfjorden we found a thick bank of fog looming over the water, Hondius steamed into it and were immediately enveloped in a cold, gloomy world of swirling mist. We neared Kapp Lee, but it was obvious that conditions were not great and landing to visit the walrus would be unsafe. Instead, Florence decided to switch our plans for the day, we would head out of the fog to Sundneset, which was not far away off our stern and was still in glorious sunshine. However, nature had one more trick up her sleeve this morning; as we steamed towards the new landing site, we heard an announcement – a polar bear had just been spotted on shore, right at the landing site! This obviously meant that we could not land here either. Instead we





congregated on the bow as the officers on the bridge brought Hondius close in to the shallow shore, pushing the limits to give us a view of the bear on land. An impromptu lecture was arranged; Pierre gave a really interesting talk about humpback whales, giving insight into these wonderful, intelligent creatures. We found out that they have recently been discovered to show empathy, not just to family members or other humpback whales, but also to

other species including grey whales, seals, and even humans. We learned that there are over 100 documented cases of humpbacks protecting other species from predation by sharks and killer whales, a remarkable trait and the hallmark of a very intelligent animal.

Whilst we tucked into another sumptuous lunch, we cruised back towards Kapp Lee, hoping

the weather was good enough to see the walrus. As we neared the coast we were again enveloped in thick fog, but the expedition team launched two scout zodiacs to see if the conditions on the beach were any better. After half an hour they returned with mixed news, conditions were very foggy and it would not be possible to land because of the risk of bear encounters. However, there would be a zodiac cruise instead to see the walrus from the water. We all piled



into the zodiacs at the shell doors and our drivers followed their GPS' through the fog to the beach. As we quietly approached the shore, we could start to make out the dark mass of the mountainside looming out of the mist above us. A little closer in and we could suddenly see the beach with the shapes of the cabins, and then finally we could see the walrus! A group of males slumbered in peace in this remote Arctic beach, digesting stomachs full of shellfish. As



we got closer, we began to smell them too, the aroma of slowly fermenting seafood was pretty strong and we were glad to be in fresh air shortly after! We made several slow passes of the walrus, careful to keep our voices low and movements to a minimum, and just as we had all had a good look at them and were turning to leave several joined us in the water, lazily swimming over to check us out before exhaling and disappearing beneath the

waves.

In the evening we convened for our daily briefing and the evening recap. We heard about the plans for the coming day; a day of expedition cruising in Hornsund – ‘Svalbard in a fjord’. We had the answers to several burning questions from the trip question box and then Mariela gave an interesting presentation about Walruses. This included their evolution, habitat, breeding, and their unusual feeding techniques which involve sensing clams with their vibrissae (thick bristles which they can move individually), before creating suction with their mouths to pluck the meat straight from the shell!



The evening was spent luxuriating over dinner, taking time to enjoy the views and swap stories from the trip so far as we steamed south through Storfjorden. A few of us made it to the bar for a nightcap, a nice way to end another interesting day in the high Arctic.

Day 8: 30th July 2019

Hornsund: Burgerbukta and Samarinbreen

GPS position at 0800: 77°04'.4 N, 015°59'.1 E

Wind: SW4 Sea State: Smooth Weather: Overcast

Air Temp: 6°C Sea Temp: 5°C



We woke up with a nice blue sky, the ship was surrounded by nice green and brownish mountains.

We started the day with a nice great zodiac cruise in Burgerbukta bay, into the western fjord: Vest Burgerbukta in Norwegian.

This long fjord is surrounded by mountains with waterfalls and water surges. We cruised among icebergs, and did a few stops to enjoy the blue color of the old ice detaching from the glaciers to become bergy bits.

We could also listen to the sound of the air bubbles exploding under pressure when the fresh ice entered in contact with the salty water from the sea. We shut down our engines, sat down comfy on the pontoons, and enjoyed the sound of nature. Something we felt very privileged to be able to do.

At the top of the mountains above us, about 500 meters above our heads, we could see a colony of kittiwakes on





the cliff. This species usually nest together among hundreds of couples. Taking advantage of the upwelling currents created by the subglacial rivers and calving, which bring food up to the surface of the sea, these gulls love to hang out in large groups very close to the glacier front.

We cruised along the front of the glacier, to finally find ourselves in front of the lateral

morain on the side of it. The clouds above our heads had amazing shapes and colors, pushed away by different winds on the top of the mountains.

After one hour and a half going through the fjord, we went back on board to enjoy another delicious lunch prepared by the galley team.

In the afternoon, we relocated to our planned location but as the fog was too thick there, we decided to go explore further into Samarinvågen fjord and we found a beautiful area with a big glacier at the end of the bay: Samarinbreen, where some of us started doing a nice Zodiac cruise along the front of it, while the other half of us landed at a small cove to hike up a hill towards the glacier moraine.



We had very nice weather, no wind, sunshine and good visibility over the glacier. We were super lucky and excited to be able to walk on the ice and continue to the top of the hill where we had a wonderful view of the glacier.

Day 9: 31st July 2019

Poolepynten and Alkhornet

GPS position at 0800: 78°26'.2 N, 011°59'.0 E

Wind: NNW3 Sea State: Calm Weather: overcast

Air Temp: 3 °C Sea Temp: 9 °C



Today we started the day with a landing on the long-awaited site of Poolepynten, where a nice colony of walrus has established itself. There were about 20 walrus hauled out on the beach and we were able to slowly approach and observe them on their daily routine. There were also some walrus in the water and it was very interesting to watch them interact with each other and walk onto the beach. We were all impressed by their size and the length of their tusks. These walrus are believed to have recolonized Svalbard from Franz Josef Land after the local population had been exterminated by hunters in the past. Most walrus in these waters nowadays are males, but some females with pups have been observed, indicating that there is a new local population establishing itself

in Svalbard. A jolly good piece of news!

We were all happy to get back on board for a nice cup of hot tea, after which we had lunch. Finishing lunch, we had a sighting of a Minke whale, and soon after of a Fin whale very close to the ship.

In the afternoon, we sailed to Alkhornet and the weather there was beautiful. Blue sky, hot sun and calm waters. The landing was an excellent choice and we were able to observe the bird colony on the majestic cliff. There were a lot of reindeer around which did not mind our presence and offered us great photographic opportunities. The tundra here was rich with several species of flowers, and the view around us was breathtaking. A couple of foxes traversed the secured area and let themselves be photographed easily.





Back on the ship, the hotel team was waiting for us in the lounge for the captain's cocktail and the farewell talk of our expedition leader Flo. All in all, it was a fabulous trip where we managed to do our first circumnavigation of Spitsbergen, we saw numerous polar bears, and we shared incredible experiences in these beautiful sceneries of Svalbard.



We slowly cruised back to Longyearbyen through calm waters and with an incredible sun. This was a trip that none of us will forget.

Day 10: 1st August 2019

Longyearbyen

GPS position at 0800: 78°14'.61 N, 015°32'.60 E

Wind: S1 Sea State: Calm Weather: Sunny

Air Temp: 6°C Sea Temp: 8°C

Our last day started on the first hours of Thursday as some of us had to disembark shortly after midnight to catch the early flight at 2 am. As the crew and staff were taking the luggage down to the pier, we made our way down the gangway for the last time. Waving goodbye to our lovely team, we started our journey back home.

Next morning, last wake-up call from our Expedition Leader (some will miss the sweet voice of Florence instead of the alarm chiming every morning) and breakfast was about to be served in the dining room before we disembarked Hondius.

At 8:30 am we were finally ready to give the last couple of hugs to the team and board the buses who will take us to our different destinations. Our journey of exploration was over, but the memories will remain with us forever. An Arctic expedition cruise is definitely something we cannot explain with words nor even with pictures; is a complex mix of feelings, smells, sounds, colours and textures that make the voyage an unforgettable experience.

Safe travels, we hope to see you back onboard soon!



**Thank you all for such a wonderful voyage, for your company,
good humour and enthusiasm. We hope to see you again in the future,
wherever that might be!**

Total distance sailed on our voyage: 1159 nautical miles

Furthest North: 80°48'.64 N, 017°36'.93 E

**On behalf of Oceanwide Expeditions, Captain Remmert Jan Koster,
Expedition Leader Florence Kuyper, Hotel Manager Michael Frauendorfer
and all the crew and staff, it has been a pleasure travelling with you.**



PHOTOGRAPHY CONTEST 2019

Your chance to win a € 1000 gift voucher for your next polar adventure.

EVERYONE KNOWS A PICTURE IS WORTH A THOUSAND WORDS, BUT DID YOU KNOW THAT YOUR PHOTOS MIGHT NOW ALSO BE WORTH A **€ 1000 GIFT VOUCHER**?

Share your experience!

Did you catch a rare seabird on the fly? Do you have a panorama of the Northern Lights filling the sky? Did you get up close and personal with a penguin? Did you capture a look of awe or wonder on a fellow passenger's face?

If you've been a passenger on any one of our past voyages we want to see your pictures.

You're free to send in as many pictures as you wish. The best pictures are the ones that capture what it's like to take one of our special expeditions to the remote and beautiful ends of the Earth.



PRIZES



€ 1000

GIFT VOUCHER

for Oceanwide Expeditions



€ 500 gift voucher

for Oceanwide Expeditions



€ 250 gift voucher

for Oceanwide Expeditions

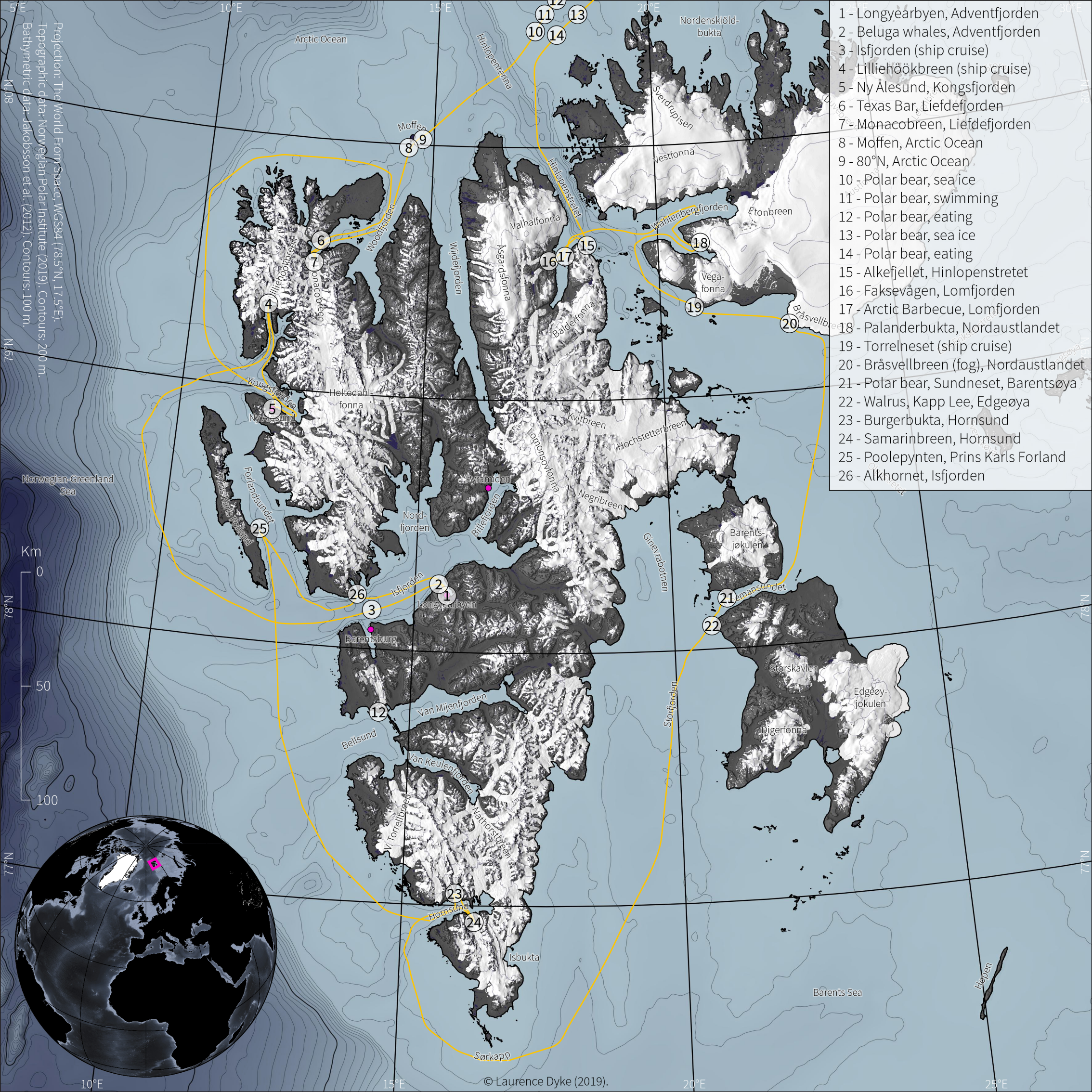
UPLOAD YOUR PHOTO AT

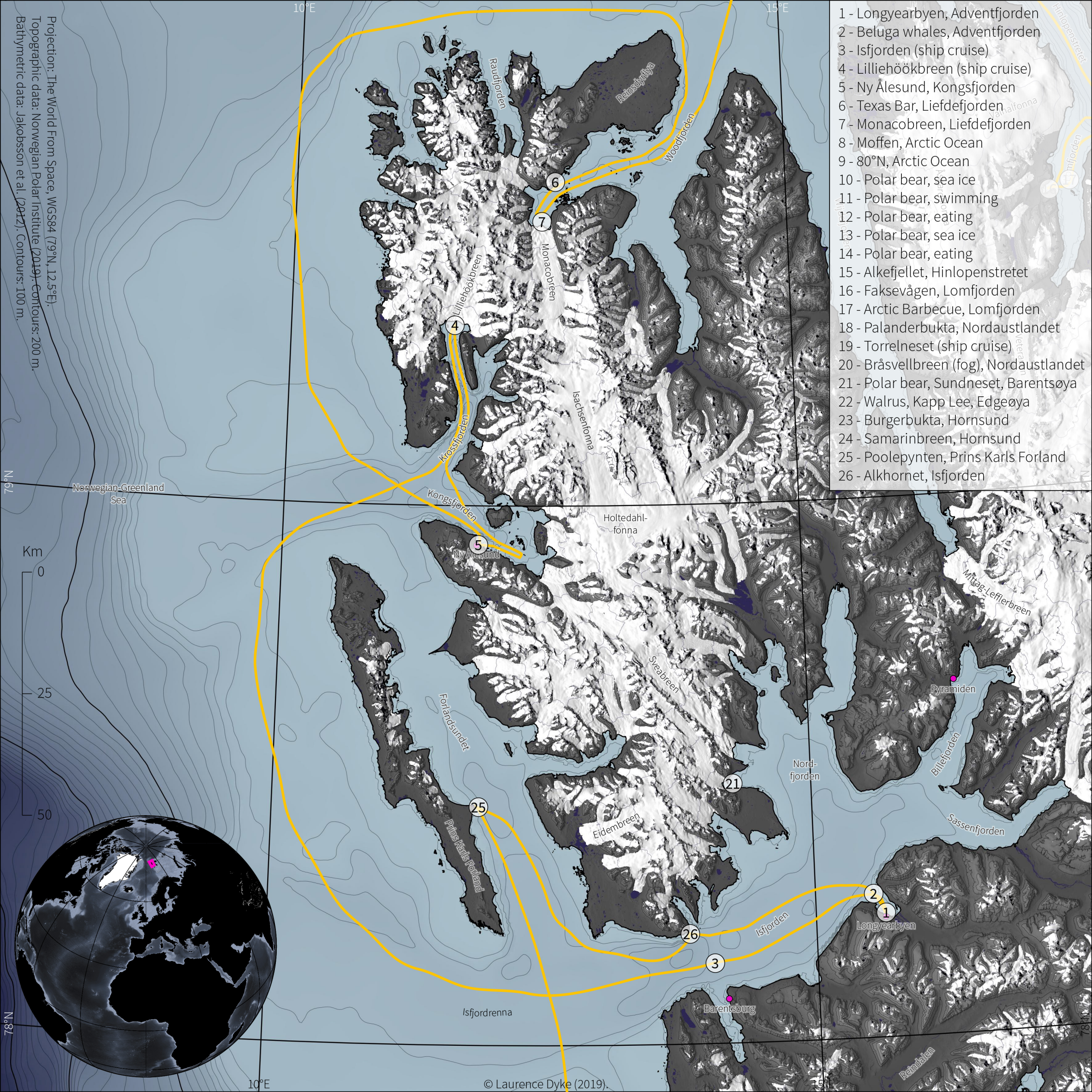
WWW.OCEANWIDE-EXPEDITIONS.COM/GALLERY

The size of your photo should be between 2MB and 8MB. Our lucky winners will be contacted by e-mail and Facebook by 31 October 2019. The photography contest runs from 16 May 2019 until 30 September 2019.

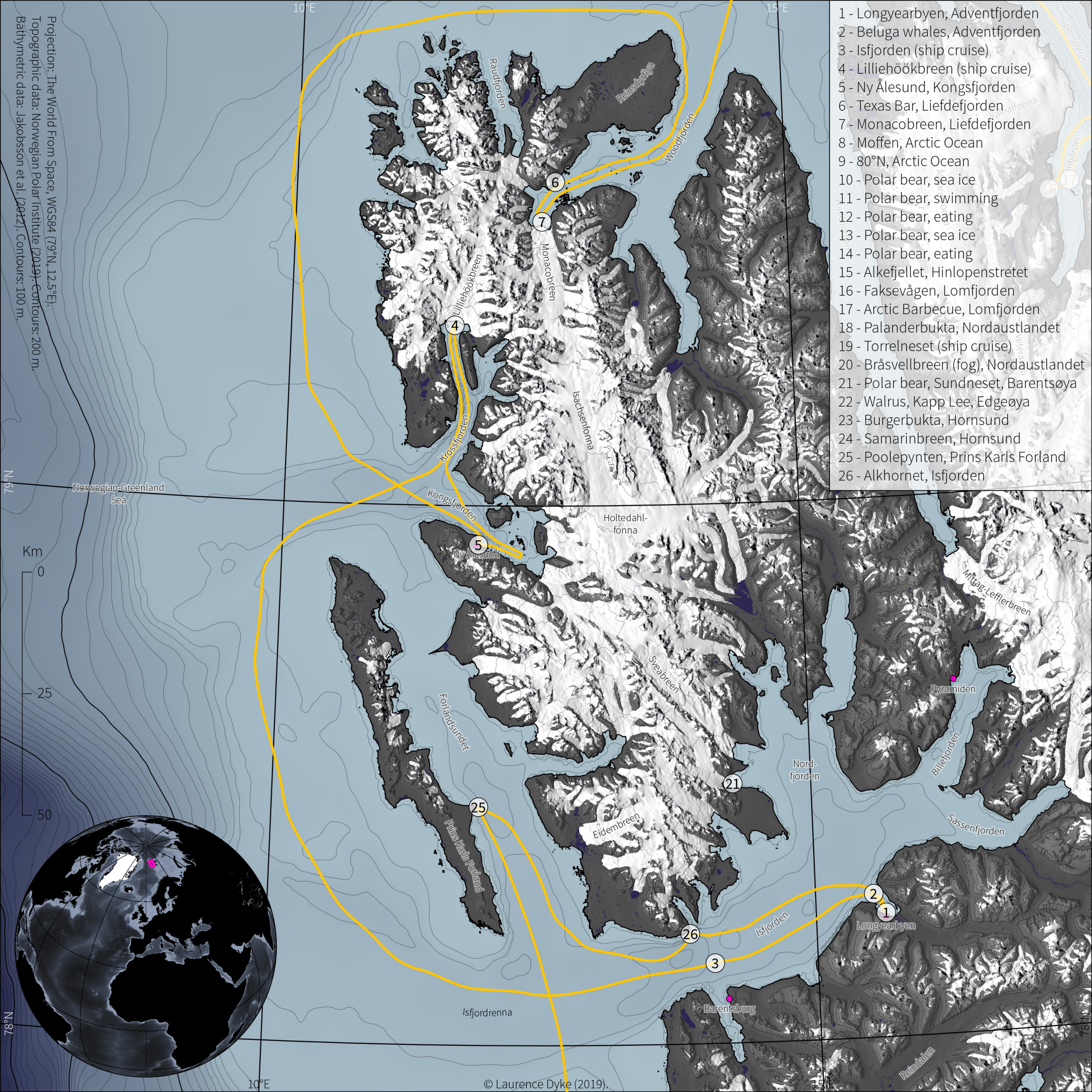
Read the terms and conditions of the contest on www.oceanwide-expeditions.com/page/contest-terms

Birds and Mammals of Svalbard 23 July - 01 August, 2019													
English Name	Latin	German	中文	Dutch	23	24	25	26	27	28	29	30	31
Red-throated diver	<i>Gavia stellata</i>	Sternaucher	红喉潜鸟	Roodkeelduiker									x
Northern Fulmar	<i>Fulmarus glacialis</i>	Eissturmvogel	北方暴风鹱	Noordse stormvogel	x	x	x	x	x	x	x	x	x
Pink-footed Goose	<i>Anser brachyrhynchus</i>	Kurzschnabelgans	粉脚雁	Kleine rietgans						x	x		
Barnacle Goose	<i>Branta leucopsis</i>	Weisswangengans	白颊黑雁	Brandgans		x							
Brent Goose	<i>Branta bernicla</i>	Ringelgans	黑雁	Rotgans									
Common Eider	<i>Somateria mollissima</i>	Eiderente	欧绒鸭	Eidereend		x	x		x	x	x	x	
Long-tailed Duck	<i>Clangula hyemalis</i>	Eisente	长尾野鸭	Ilseend							x		
Rock Ptarmigan	<i>Lagopus mutus hyperboreus</i>	Alpenschneehuhn	岩雷鸟	Alpensneeuwhoen					x				
Purple Sandpiper	<i>Calidris maritima</i>	Meerstrandläufer	紫滨鹬	Paarse strandloper	x	x	x		x		x	x	x
Arctic Skua	<i>Stercorarius parasiticus</i>	Schmarotzerraub-möwe	短尾贼鸥	Kleine jager		x	x	x			x		x
Great Skua	<i>Stercorarius skua</i>	Skua	大贼鸥	Grote jager			x						
Kittiwake	<i>Rissa tridactyla</i>	Dreizehenmöwe	三趾鸥	Drieteenmeeuw	x	x	x	x	x	x	x	x	x
Ivory Gull	<i>Pagophila eburnea</i>	Elfenbeinmöwe	象牙鸥	Ivoormeeuw			x						
Arctic Tern	<i>Sterna paradisaea</i>	Küstenseeschwalbe	北极燕鸥	Noordse stern	x	x	x			x	x	x	x
Brunnich's Guillemot	<i>Uria lomvia</i>	Dickschnabellumme	厚嘴海鸦	Dikbekzeekoet		x	x	x		x	x	x	x
Black Guillemot	<i>Cephus grylle</i>	Gryllteiste	白翅斑海鸱/黑海鸱	Zwarte zeekoet	x	x	x	x	x	x	x	x	x
Little Auk	<i>Alle alle</i>	Krabbentaucher	小海雀	Kleine alk	x		x		x	x	x	x	x
Puffin	<i>Fratercula arctica</i>	Papageitaucher	海鹦	Papegaaiduiker									x
Snow Bunting	<i>Plectrophenax nivalis</i>	Schneeammer	雪鹀	Sneeuwgor		x	x		x	x			x
MAMMALS													
English	Latin	German	中文	Dutch	23	24	25	26	27	28	29	30	31
Walrus	<i>Odobenus rosmarus</i>	Walross	海象	Walrus			x			x	x		x
Bearded seal	<i>Erignathus barbatus</i>	Bartrobbe	髯海豹	Baardrob			x		x				
Ringed seal	<i>Phoca hispida</i>	Ringelrobbe	环斑海豹	Ringelrob						x			
Harp seal	<i>Pagophilus groenlandicus</i>	Sattelrobbe	格陵兰海豹	Zadelrob				x					
Common /Harbour seal	<i>Phoca vitulina</i>	Seehund	斑海豹	Gewone zeehond		x							
Minke Whale	<i>Balaenoptera acutorostrata</i>	Zwergwal	小须鲸	Dwergvinvis					x	x			x
Blue Whale	<i>Balaenoptera musculus</i>	Blauwal	蓝鲸	Blauwe vinvis	x								





- 1 - Longyearbyen, Adventfjorden
- 2 - Beluga whales, Adventfjorden
- 3 - Isfjorden (ship cruise)
- 4 - Lilliehöökbreen (ship cruise)
- 5 - Ny Ålesund, Kongsfjorden
- 6 - Texas Bar, Liefdefjorden
- 7 - Monacobreen, Liefdefjorden
- 8 - Moffen, Arctic Ocean
- 9 - 80°N, Arctic Ocean
- 10 - Polar bear, sea ice
- 11 - Polar bear, swimming
- 12 - Polar bear, eating
- 13 - Polar bear, sea ice
- 14 - Polar bear, eating
- 15 - Alkefjellet, Hinlopenstretet
- 16 - Faksevågen, Lomfjorden
- 17 - Arctic Barbecue, Lomfjorden
- 18 - Palanderbukta, Nordaustlandet
- 19 - Torrelneset (ship cruise)
- 20 - Bråsvellbreen (fog), Nordaustlandet
- 21 - Polar bear, Sundneset, Barentsøya
- 22 - Walrus, Kapp Lee, Edgeøya
- 23 - Burgerbukta, Hornsund
- 24 - Samarinbreen, Hornsund
- 25 - Poolepynten, Prins Karls Forland
- 26 - Alkhornet, Isfjorden



Florence Kuyper – Expedition Leader



Florence is a cosmopolitan with a passion for the polar regions, remote nature, deserts, history and nomadic people around the globe. After receiving her Masters degree in Educational and Organisational Psychology in the Netherlands, Florence had a European career as a consultant-manager in the field of social affairs.

In 2004 she went for the first time to the big white desert 'Antarctica' and her passion for this continent has drawn her back 'South' ever since.

But Florence can also do extreme heat: she crossed 1,200 km of harsh Mongolian desert on foot, together with a team and her Bactrian camel. Florence lived on a British historical base on the Antarctic Peninsula "Port Lockroy" where she worked as Base Leader. She also works on sailing yachts in the Arctic and Antarctica. Florence has worked as a guide and expedition leader in both polar regions since 2012 and she looks forward to sharing her knowledge and unlimited passion for the polar regions with you.

Pablo Brandeman – Assistant Expedition Leader



Born and raised in Argentinean northern Patagonia, now living in Ushuaia, Tierra del Fuego, grew up with a Fishing Guide dad that pushed me not only into adventure activities but also into guiding and the tourism industry. I love Skiing, Snowboarding, Skateboarding, Surfing, Paragliding, Kitesurfing, Climbing, Mountaineering, Boat driving and many other thrilling activities! I am a well-seasoned Antarctic guide, having worn all the different hats as an expedition staff, with over 150 trips to the southern continent... but just a few to the Arctic region! Totally excited about this experience and looking forward to seeing Polar Bears, Walrus and Puffins!

Shelli Ogilvy - Assistant Expedition Leader



Shelli Ogilvy was born and raised in Alaska. She grew up in a rural town separated from the road system, with glaciers, whales, bears and big mountains as her backyard.

Shelli has been guiding as a wilderness leader since 1997. She has been working as an expedition guide in the polar regions of both Antarctica and Arctic beginning in 2007 through the present. Master in Sea Kayak and Zodiac driving/ Marine Biologist and wilderness Naturalist. When not guiding on ships, she works taking small groups by sea kayak out into wilderness

settings for overnight camping trips in Alaska.

Shelli obtained her Bachelors of Science in 2001 with a major in Marine Biology. She has worked with several different research groups, primarily studying identification and biology of humpback and gray whales off the North Pacific Coast, as well as many observational studies in South Atlantic/ Pacific and Antarctic waters.

Her passion for spending time over the years in Polar Regions makes her more aware of changing environments, ice, glaciers, and distribution of wildlife. Her other background includes exploring the waters of the North and South via sea kayak. Needless to say, being on the ocean is one the places she best calls "home".

When not guiding, Shelli is an accomplished artist. She published an illustrated bird book in 2009 and is shown in several small galleries. Other interests include working on her small cabin in Alaska, backcountry skiing, fly-fishing, and above all sharing these beautiful polar landscapes.

Hélène de Méringo - Expedition Guide



Born in 1982 in Brittany (France), Hélène is passionate about nature and wildlife from an early age. That's why she studied biology and ecology to stay close to her interests.

After a year in Montreal, she graduated her master degree with an internship in Madagascar. The following year she enjoyed some experiences in Guinea, working with Chimpanzees in a conservation center, and then got involved in an educational program in France and in a natural park in Quebec.

In 2008 she overwintered on the Kerguelen archipelago (a very remoted island in sub-Antarctic) as a volunteer biologist, for the French Polar Institute. There she really discovered albatrosses, elephant seals and penguins, and found a real interest for cold ecosystems and wild lands. For few seasons after this experience, she worked for the natural reserve of French southern and Antarctic territories and returned several times on Kerguelen and then in New Zealand to work on invasive species.

Since 2012, she has joined the CNRS (National Center of Research Science) as a member of a research team on the impact of introduced animal species on the islands. This work has led her to regularly participate in missions in the Pacific Ocean to work on seabirds nesting in remote islands.

At the same time, she becomes eco guide during summer seasons, on sailing boats in the Mediterranean Sea to train volunteers to count and study whales and dolphins.

In 2019, she began joining expeditions to the Antarctic Peninsula with Oceanwide expedition to become a polar guide on expedition ships.

Hélène lives in the south of France near the sea.

Laurence Dyke - Expedition Guide



Laurence is from Cornwall in the far southwest of the UK and grew up on the coast, never far from the water and boats. Laurence has a background as a geographer with a special focus in glaciology, a choice inspired by seeing a glacier up close for the first time in the Austrian Alps.

For the last 7 years he has worked in science, both in the UK and Denmark, working to understand how and why huge glacier systems have changed in the past. Laurence first visited the Arctic in 2010 whilst undertaking research for his PhD and was immediately captivated by the wild landscapes of the high latitudes. His subsequent research has taken him on numerous expeditions to remote areas of Greenland, Svalbard, and Arctic Canada.

Laurence is also a passionate advocate for polar science, when time allows, he produces videos and articles about research from Greenland and the wider Arctic. Laurence lectures in glaciology and geography.

Jerry Zhao - Expedition Guide



Soon after completing his degree in Business Administration at Drexel University in Philadelphia, Jerry began a career in the travel industry. Jerry first started as an international travel consultant and tour leader and led exclusive small high-end guests throughout Europe. He then became partner in an international travel consulting firm and focused on employee training.

Searching for more adventure, Jerry joined a Chinese travel agency specializing in Polar regions as a project manager. He has travelled to the North Pole several times on the Russian ice breaker and has organized yacht charters to

Antarctica and along the way he has studied the geography, wildlife and history of the Polar regions

Claudio Ghiglione - Expedition Guide



Claudio was born in Italy in 1983. Always interested in science and nature since he was young.

His first passion was, as for many other children, the dinosaurs. If he had to consider himself only as a student, he wasn't a good one because he didn't like to spend entire days inside buildings only reading books. However, he has always had a need to discover new things.

Everyone comes into the world with the need of discovery but just few people have this passion when they become adults.

After high school his tendency for the scientific subjects led him to take a degree in Environmental Sciences and then also a master degree in Marine Sciences.

After these degrees, he worked several years on different University scientific projects and in March 2017, he defended and deposited his PhD thesis in Earth, Environmental and Polar Sciences run in collaboration among the University of Siena (Italy), the Italian National Antarctic Museum (Italy) and the British Antarctic Survey (United Kingdom) with a specialization in polar benthic ecology.

He took part in different Arctic and Antarctic expeditions as a researcher and as a photo guide too because, in addition to his scientific skills, he is also a professional wildlife and travel photo journalist.

Mark Vogler - Expedition Guide



Mark graduated the prestigious UCLA Film School and is published travel writer and photographer. In college he became a NAUI certified diver and went on to work on film productions and underwater film crews, shooting sharks on location in the Bahamas.

In 2006 Mark heard the call of the ice and ventured to Barrow, Alaska to see the frozen ocean. In 2011 he then went South, sailing below the Antarctic Circle, where he developed an acute case of Polar Fever. In 2012, he returned to the Arctic, exploring the east coast of Greenland and sailed deep into Scoresby

Sund, the largest fjord system on earth, resulting in his first published polar piece, "Greenland's Iceberg Parade: The Greatest Show On Earth", published by international shipping industry magazine, Marine Commerce. In 2015, Mark was sent on assignment to the Antarctic Peninsula with international LGBT Travel Magazine, Man About World, to pen "Antarctica: The Ultimate White Party". Since then Mark has built his polar credentials, earning his STCW-95 certification at the California State University Maritime Academy, trained with US Coast Guard in maritime safety, and become certified in wilderness first aid.

Mark has explored and photographed both the east and west coasts of Greenland, Iceland, Svalbard, Canadian Arctic, Alaska, the Antarctic Peninsula, ventured into the Weddell Sea, and in 2017, he semi circumnavigated the Great White Continent, on a 32-day sail from New Zealand to Argentina with Oceanwide Expeditions.

Most recently, Mark spent the first 2 months of 2018 with the National Science Foundation at McMurdo Station, the United States Antarctic Research Station in the Ross Sea, and is on standby to return there to winter-over in Antarctica in 2019.

Pierre Gallego - Expedition Guide



Pierre is a veterinarian specialised in marine mammal medicine. He has been working in the field of marine biology for 18 years, and has been organising marine mammal research internships around the world since 2004. He represents the Government of Luxembourg at the International Whaling Commission and CCAMLR, and works with numerous international NGOs to promote marine mammal conservation and to fight cetacean captivity.

He is currently carrying out his PhD with the Oceanology Lab of the University of Liege, Belgium. His PhD thesis deals with pollutants and stable isotopes in humpback whales off Ecuador and Mozambique. He is a keen birdwatcher and enjoys photography. The ocean is his passion, and water is his element!

Mariela Cornejo - Expedition Guide



Mariela was born in Ushuaia, the southernmost city in the world, and lived through the process of her own land becoming the Province of “Tierra del Fuego”. Living at “the door to Antarctica” and reading stories about Nordenskjöld and the local hero, Sobral, she couldn’t avoid dreaming about adventuring even further South.

Raised far away from the city, out in the central valley of the South Andes range, it was a given to practice all kind of winter sports. Nordic skiing, Splitboarding, Biathlon, Skijoring, Mushing and Ice skating, just to name a few. She has participated in Biathlon World championships and also took part in several international competitions, giving her the opportunity to travel around the world. During summers, she likes to do all kind of outdoor activities including camping in the mountains, hiking, paddling, kitesurfing and climbing.

Her first season in Antarctica was in 2014, and since then, the polar bug has infected her in such a way she can’t stop returning season after season. History, wildlife and geology of the polar regions grew as an interest, leading her to start planning her first season to the opposite region. Even though she used to spend winters in Ushuaia guiding snowmobile excursions through the forests of Tierra del Fuego and leading groups on snowshoeing expeditions and cross-country skiing adventures, this boreal summer she’s excited to be adventuring on her first Arctic season. Join her on a Zodiac Cruise, walk around the beach or out on deck to share some stories and look out for amazing wildlife!

John Yeh - Expedition Guide



I was born on 1958 in Taiwan and lives in Sydney, Australia since 1991. I joined “Chinese Boy Scouts” from Junior High to college. During in Boy Scouts those years I learned a lot from the team work, camping skill, tracking skill, wildlife, plants etc. I was in the army service for 2 year as a Lieutenant. I have taken up orienteering in Gobi Desert, China twice on 2013. I really enjoy traveling and outdoor challenging.

I had EE bachelor degree and was R/D engineer for 7 years before work as a regional Sales manager in South Europe and GM for Australia/New Zealand. I have traveled 27 countries and covered 6 continentals during my working carrier. I changed my working carrier into tourism industry since 2013 and work as “Senior International Business Consultant” & “Expedition Guide”. I have been to Antarctica 7 times and twice for Arctic till Dec/2015 and really enjoy dealing with people.

Due to more Chinese travelers visiting Antarctica & Arctic as me work as an expedition guide, I can deliver more conservation education to those travelers. Hope our future generation can see the last piece of wild land in the earth. This is my passion and willing to do more in the near future.

Szymon Niezabitowski - Expedition guide



Szymon was born in Cracow, Poland. He studied Biology and Geography in Cracow where he received his graduate degree in “Faculty of Biology and Earth Sciences”. His final thesis was about Volcanic Soils on Iceland.

After he finished his studies, he joined Polish Academy of Sciences and worked for the Institute of Systematics and Evolution of Animals, where he was a guide and researcher on exotic animals.

Szymon began guiding in the Arctic in 2016 on Spitsbergen and since then has also led

Orca whale trips in North Norway.

From the earliest years of his life he is a passionate naturalist with a special interest in the geography and the wildlife of the higher latitudes.

Melissa Scott - Expedition Guide



In 1987, Melissa moved to the mountains of Montana and never looked back. She completed her degree in Environmental Science Education and has dedicated her career to inspiring conservation through relevant, first-hand encounters with the natural world.

She is a dynamic and enthusiastic professional naturalist/guide with over 28 years of experience leading natural history and cultural trips around the globe. While she truly enjoys every region in which she guides, whether deserts or mountains or oceans, the arctic marine environment is probably top on her list.

The complexity and richness of this system is incomparable, supporting such iconic creatures as polar bear, arctic fox, bowhead, beluga and narwhal along with the vast abundance of seasonal migrants. So, whether exploring the arctic wilderness of Svalbard & eastern Greenland, the bamboo forests of China, the nursery lagoons of Baja's grey whales, or the wilds of the U.S. and Canada, you can be sure she is excited to share her knowledge and enthusiasm with you!

Bart Stepien - Ship Doctor



Bart has been at sea for seven years now. He has been providing his medical services to companies like Cunard Line, Carnival, and Disney.

He took an active part in various medical operations including boat and helicopter disembarkations all around the world (in Australasia, Africa, Europe, both Americas and even Easter Island).

He shares his time ashore between various medical conferences and courses, hospital ER shifts, rock climbing, scuba/free diving and occasional skydiving.



OCEANWIDE

EXPEDITIONS

Around Spitsbergen

23rd July - August 1st 2019

Tuesday 23rd July

Boarding and departure from Longyearbyen

WELCOME ABOARD!

*For the arriving passengers: luggage will be delivered to your cabin as soon as possible.
Please check to make sure you have received all your luggage!*

**** Tea and coffee are always available in the lounge bar on deck 5 ****

- | | |
|--------|---|
| ±17.30 | Welcome briefing in the lounge (deck 5).
Expedition leader Florence and hotel manager Michael will introduce you to the life on board the Hondius.
This will be followed by a mandatory 'Safety at Sea' briefing for ALL passengers. Presence will be checked. |
| ±18.00 | Departure of the Hondius. Please stay off the bridge during this time,
After departure the mandatory safety drill will take place. Please listen to the announcements. |
| 19.30 | Dinner is served in the dining room (deck 4). |

After dinner, feel free to relax in the lounge, enjoy the scenery and discover the ship...

Please note that tonight we will be sailing into the open sea. Take your seasickness medication before you really feel the movements of the vessel. Make sure that all your belongings are put away safely and that doors and drawers in your cabin are tightly closed. Walk slowly on the ship, always use one hand for yourself and one for the ship and beware of your fingers because of doors jamming!



OCEANWIDE

EXPEDITIONS

Around Spitsbergen

23rd July – 1 August, 2019

Wednesday 24th July

Safety Briefings and landing at Ny Alesund

- 07:30 Wake-up call at Lilliëhookbreen glacier: Enjoy the views!!
- 08:00 Breakfast is served in the restaurant on deck 4
- 09:15 Staff introduction followed by **mandatory** AECO (Association of Arctic Expedition Cruise Operators) and zodiac briefing in the lounge on deck 5
- 11.15 Distribution of boots. Listen to announcements for your deck to be called
- 12:30 Lunch is served in the dining room
- 14:00 Landing and free roaming around at Ny Alesund: please go to the gangway at deck 4
- 14.00 deck 3
14.15 deck 4
14.20 deck 6
14.25 deck 7

Ny Alesund was once home to a large coal mining settlement, and has an array of flora, fauna and history. Ny Alesund is now home to many international research institutions, using it as a base for Arctic research. There is a souvenir shop (open 14.30-16.00) in the settlement that accepts Kroner, Euros and card payments (preferred).

Walks will depart from the statue at:

- 14:30 & 15.45 guided walk towards the mast
15:30 and 16:30 guided walk and talk tundra outside of settlement

17:45 all on board

Please switch phones to flight mode and keep to paths and roads while in the settlement!

- 18:30 Recap and Captains cocktail in the lounge
- 19.00 Dinner is served in the dining room (deck 4).



OCEANWIDE

EXPEDITIONS

Around Spitsbergen

23rd July- 1 August, 2019
Thursday 25th July

Texas Bar landing and Monacobreen cruise

- 07:00 Wake-up call
- 07:30 Breakfast is served in the restaurant on deck 4

Texas Bar Landing

Please consider carefully your abilities when choosing your hike option

- 08:30 Hikers (who signed up) to zodiacs (deck3 – forward shell door)
*This will be a very challenging hike only for the “fit, fast and furious” passengers, over steep and uneven terrain.
Your reward will be stunning views!*
- 08:40 **RED** AND **BLUE** to the shell doors
- 09:00 Lecture in English with Melissa on *Seals of the Arctic* in the Lounge
- 10:30 **YELLOW** AND **GREEN** to the shell doors
- 11:00 Join Johnny for a lecture in Mandarin: *Seals of the Arctic* in the Lounge

All who land at Texas Bar can join us for a walk to a superb viewpoint (uneven terrain and some difficult climbing is involved) or can enjoy the vicinity of the “Bar”, the landscape, as well as some coastal flora and fauna.

Feel the Arctic: **Polar Plunge** into the cold arctic waters off the beach
If weather conditions allow. Towels will be provided.

- 12:30 Lunch is served in the restaurant on deck 4

Monacobreen Zodiac cruise

We will cruise along the glacier front of Monacobreen with our zodiacs

- 14:00 **GREEN** AND **RED** groups to zodiacs
- 15:30 **YELLOW** AND **BLUE** groups to the zodiacs
- 18:30 Re-cap in the lounge (deck 5)
- 19:00 Dinner is served in the dining room (deck 4)

Moffen Island Ship cruise

- TBA We hope to take in views of Moffen Island, a small sandy island frequently visited by walrus.
Please head to the outside decks to enjoy the scenery



OCEANWIDE

EXPEDITIONS

Around Spitsbergen

23rd July – 1 August, 2019

Friday 26th July

Ice day.

07:30 Wake-up call

08:00 Breakfast is served in the restaurant on deck 4

Pack Ice

Today we will go to the pack ice. Spending time in the ice is an unforgettable experience. Please come out on deck and enjoy the majesty of the pack ice and help us look for the King of the Arctic!!

12:30 Lunch is served in the restaurant

This is a true expedition day spending time in areas looking for wildlife, subject to weather and ice conditions.

During this time there may be lectures or activities presented by staff.

Please listen for announcements

18:30 Plans for tomorrow and daily re-cap (deck 5)

19:00 Dinner is served in the restaurant (deck 4)



OCEANWIDE

EXPEDITIONS

Around Spitsbergen

23rd July- 1 August, 2019

Saturday July 27

Alkefjellet Cruise and Faksevagen Landing

- 07:00 Wake-up call
- 07:30 Breakfast is served in the restaurant on deck 4

Alkefjellet Zodiac Cruise

- 08:30 **BLUE** AND **YELLOW** to the shell doors
- 09:00 film in the lecture room: the Hunt (English spoken)
- 10:30 **RED** AND **GREEN** to the shell doors
- 11:00 film in the lecture room: the Hunt (English spoken)
- 12:30 Lunch is served in the restaurant

Faksevagen Landing

- 14:00 "Fit fast and furious" hikers leave the ship shell door deck 3
- 14:15 **YELLOW** AND **GREEN** to the shell doors
- 16:00 **RED** AND **BLUE** to the shell doors
- 16.45 lecture about the Polar Bear by Melissa – lecture room
- 18:30 Daily re-cap and plans for tomorrow
- 19:00 **A special Arctic dinner is served deck 5 aft**



OCEANWIDE

EXPEDITIONS

Around Spitsbergen

23rd July- 1 August, 2019

Sunday July 28

Palanderbukta and Torrelneset/Expedition afternoon

- 07:00 Wake-up call
- 07:30 Breakfast is served in the restaurant on deck 4

Palanderbukta Landing

- 08:15 "Fit fast furious" hikers leave the ship; **shell door 1** on deck 3
- 08:30 **BLUE** AND **RED** to the shell doors
- 09:00 film in the Lecture room "Frozen Planet"
- 10:30 **GREEN** AND **YELLOW** to the shell doors
- 11:00 film in the Lecture room "Frozen Planet" with subtitles
- 12:30 Lunch is served in the restaurant

During lunch we will navigate for 3 hours southwards along the coast of Nordaustlandet

Torrelneset Landing/Expedition afternoon

- 16.00 **YELLOW** AND **GREEN** to the shell doors
- 17.00 **RED** AND **BLUE** to the shell doors
- 18:30 Daily re-cap and plans for tomorrow
- 19:00 Dinner



OCEANWIDE

EXPEDITIONS

Around Spitsbergen

23rd July- 1 August, 2019

Monday July 29

Landing at Kapp Lee

- 07:30 Wake-up call
- 08:00 Breakfast is served in the restaurant on deck 4
- 12:30 Lunch is served in the restaurant

Kapp Lee Landing

- 13:30 **RED** AND **GREEN** to the shell doors
- 15:15 **BLUE** AND **YELLOW** to the shell doors
- 18:30 Daily re-cap and plans for tomorrow
- 19:00 Dinner



OCEANWIDE

EXPEDITIONS

Around Spitsbergen

23rd July- 1 August, 2019

Tuesday July 30

Landings at Burgerbukta and Gashamna

- 07:00 Wake-up call
- 08:00 Breakfast is served in the restaurant on deck 4

Burgerbukta

- 09:00 **BLUE AND RED** to the shell doors
- 10:30 **GREEN AND YELLOW** to the shell doors
- 12:30 Lunch is served in the restaurant

Sundneset

- 14.00 "Fit fast furious" hikers leave the ship; **shell door 1** on deck 3
- 14.15 **YELLOW AND GREEN** to the shell doors
- 16.00 **RED AND BLUE** to the shell doors
- 18:30 Daily re-cap and plans for tomorrow
- 19:00 Dinner



OCEANWIDE

EXPEDITIONS

Around Spitsbergen

23rd July- 1 August, 2019

Wednesday July 31

Landings at Poolepynten and Alkhornet

- 07:00 Wake-up call
- 07:30 Breakfast is served in the restaurant on deck 4

Poolepynten

- 08:30 **BLUE** AND **RED** to the shell doors
- 10:00 **GREEN** AND **YELLOW** to the shell doors
- 12:30 Lunch is served in the restaurant

Alkhornet

- 14.30 **YELLOW** AND **GREEN** to the shell doors
- 16.15 **RED** AND **BLUE** to the shell doors
- 18:30 Captains Farewell cocktail and Expedition Slideshow in the Lounge
- 19:00 Dinner



OCEANWIDE

EXPEDITIONS

Around Spitsbergen

23rd July- 1 August, 2019
Thursday August 1st
Longyearbyen

- 07.00 Wake-up call
- 07.30 Please put your heavy luggage in the corridor **outside** your cabin, **at the latest at 07.30**. The crew and staff will carry it down to the pier.
- 07.30 – 08.30 Breakfast

Please leave your key-card holder at the reception.

- 08.30 Time to say goodbye! All passengers leave the ship.

Buses have been arranged to take you to **Longyearbyen** or the **Airport**.

14.45 hr. afternoon flight put their luggage into a **luggage truck**.
Please check that you take all your luggage from the pier and drop it at the right vehicle.
The luggage will be transported to the airport, where you need to pick it up at the truck near the entrance of the airport.

- For the **14.45 flight** the bus will pick you up at the drop-off place at the Butikken at 12.45 and drive you to the airport. You **do not** need an extra label for the luggage.
- Passengers going to a hotel put their luggage into the bus.
- You will be dropped in the town Please attach label **nr 1** on your luggage.
- Passengers with their own transport, also attach label **nr 1** on your luggage.

Dear passengers, we enjoyed having you on board.
Have a nice and safe journey home.

Hopefully we meet again somewhere, sometime, in the Polar regions!

Farewell!