



North, and around Spitsbergen

On Board

m/v *Hondius*

August 10th – August 21st 2019



The MV *Hondius* was built in 2019 in Brodosplit, Croatia, as an expedition vessel for Oceanwide Expeditions. *Hondius* is 107.60m long, 17,60m wide and has a maximum draught of 5.3m and has an exceptionally high Ice class of PC6, a top speed of 15 knots and 3 diesel generators. The *Hondius* sails on LSMGO. Now the ship is sailing as a 176-passenger vessel with 83 cabins. Our beautiful, modern vessel carries 369m³ of fresh water and has a water plant producing 70m³ per day. In many ways, the *Hondius* is the perfect vessel for a true polar adventure!

Captain Remmert Jan Koster

And his international crew of 69

Including

First Officer:	Matei Monacu	[Romania]
Staff Officer:	Tony Salo	[Finland]
Second Officer:	Warren Villanueva	[Phillipines]
Third Officer:	Igor Nazarov	[Russia]
Chief Engineer:	Sebastian Alexandru	[Romania]
Hotel Manager:	Dejan Nikolic	[Serbia]
Assist. Hotel Manager:	Ana Sirbu Gomez	[Romania]
Ship's Physician:	Andy Murray	[Scotland]

and

Expedition Leader:	Adam Turner	[U.K.]
Assist. Expedition Leader:	Pablo Brandeman	[Argentina]
Assist. Expedition Leader:	Claudia Holgate	[South Africa]
Expedition Guide:	Jochem Braakhekke	[Netherlands]
Expedition Guide:	Catherine Buckland	[U.K.]
Expedition Guide:	Mariela Cornejo	[Argentina]
Expedition Guide:	Claudio Ghiglione	[Italy]
Expedition Guide:	Sara Jenner	[U.K.]
Expedition Guide:	Pippa Low	[Scotland,U.K.]
Expedition Guide:	Bjarni Olafsson	[Iceland]
Expedition Guide:	Rosalie Steffen	[Germany]
Expedition Guide:	Mark Vogler	[USA]
Expedition Guide:	Jerry Zhao	[China]

We welcome you on board!

Day 1: 10th August 2019

Embarkation, Longyearbyen 78°14' N 15°32' E

Wind: N F3	Weather: Overcast	Sea state: Calm
Air temp: 6C	Water temp: 11C	Visibility: Good

It was a beautiful summer afternoon in Longyearbyen when we all left our hotels to roam around town for the last time before joining Hondius, our home for the next eleven days. The old mining town has come a long way since the early exploration days. A supermarket, souvenir shops, restaurants and amazing museums welcome tourists from all over the world during the entire year. Longyearbyen was founded in 1906 by the US-American entrepreneur John Munro Longyear, but the history of the area goes back in time to the years of the Pomors, hunters from the north coast of Russia, and the officially documented "discovery" of Spitsbergen by Willem Barentsz in 1596.

By 1600, most of us were already gathered at the local jetty ready to board. To our surprise, our ship was at anchor, but the Oceanwide staff were waiting for us with a big welcoming smile and lifejackets prepared so we could get our first zodiac ride! Adventure is always around the corner in the Arctic.



Pablo helped us getting on the boats while Sara and Maru were looking after our luggage.



We arrived to the ship and met the Hotel crew, who guided us to our cabins and later on to the lounge for our first mandatory safety briefings. Chief Officer Matei instructed us on how to conduct ourselves onboard an expedition vessel, followed by a safety drill and finally, dinner.

The cherry on the pie was a great wildlife sighting after dinner: a Humpback whale feeding close to the ship, that we could enjoy not only from the outside decks and the open bow, but even from the lounge's windows! As if this hasn't been enough for a first day onboard, we all went down to the shell doors area for a rubber boot fitting party with some music and dance-testing together with the Expedition Team.



We were now ready to get a good rest and prepare for the next days' activity.

Day 2: 11th August 2019

AM - Ny Ålesund 78° 56' N 11° 56'E
PM - 14 Julibukta 79° 7.3' N 11° 50.9'E

Wind: N,F2-6	Weather: Overcast	Sea state: Calm
Air temp: 6C	Water temp: 9C	Visibility: Good

We received our first wake up call onboard at 0730 to find ourselves sailing into Kongsfjorden, so that we were in position for our mid-morning landing at Ny Ålesund. The northern most permanent settlement on earth - and the only community in Svalbard not destroyed during WWII. The former coal mining village is now a scientific community operating under the Norwegian Polar Institute research governance.



After breakfast we gathered in the lounge for staff introductions followed by the mandatory briefings required before we do any landings or cruising. These included the AECO (Association of Arctic Expedition Cruise Operators) Arctic protocol, and zodiac operations. By 1000 Hondius had docked alongside the Ny Ålesund pier and we began to disembark for a leisurely morning roaming amongst the town's historic buildings, visiting the museum, shopping and sending postcards home from the northern most post office in the world. The historic village is one of the most significant locations for Arctic exploration and the launch point for numerous expeditions to the North Pole, including Roald Amundsen's 1925 failed attempt in two "flying boats", the N25 and N26, and his successful second attempt in the Italian built "air ship" Norge, with American financier Lincoln Ellsworth and Italian ship designer, Umberto Nobile in 1926.



Morning walks began in the center of town, at the Roald Amundsen bust, and took those joining on a short walk to "The Mast", the 35metre mooring mast of the Norge and Nobile's doomed second flight in the airship Italia in 1928. On the way there we were fortunate to spot a majestic male reindeer, quietly grazing on the tundra. Afterwards we

continued down towards the beach and to the memorial to those killed in a mining accident in 1958 before returning to the ship in time for lunch.



In the afternoon we donned our arctic gear for our first zodiac cruise and landing at 14 Julibukta. The first group went ashore, and had the option to hike up the fjord along the beach for beautiful views of the magnificent 14 Julibreen glacier, which suddenly calved a very large chunk of ice causing waves to crash onto the

beach.

The second hiking option was to walk to the “hanging garden” under the cliffs of the fjord, where we spotted reindeer and a white arctic fox high on the tundra above. The second group went on a zodiac cruise around the fjord, taking in the rugged landscape, while keeping an eye out for animals that live in Svalbard, including seal, fox, reindeer and even polar bear. Mid afternoon the groups switched activities to finish the day.



Back on board *Hondius*, our expedition leader, Adam, gave us a preview of our next day’s landings and then introduced our captain, Remmert Jan Koster, who joined us in the observation lounge, to welcome us on board and toast the success of the rest of the voyage with a glass of bubbly.

At 1900 we headed for the dining room for a delicious four course dinner, and to share with our fellow travelers the excitement of our day on an expedition at the top of the world.



Day 3: 12th August 2019

AM - Texas Bar 79° 61'40 N 12° 69'71 E
PM - Monacobreen 79° 57'65 N 12° 44'06 E

Wind: N, NW 5-6	Weather: Cloudy	Sea state: Calm
Air temp: 0C	Water temp: 5C	Visibility: Good

Overnight we had sailed North to Woodfjord and were just cruising into Liefdefjord as Adam woke us up, we were greeted with overcast skies but glassy calm waters, making for some wonderful reflections. The expedition team started earlier in order to scout the shore line and the surrounding hills, as our plan was to take a hike onto higher grounds to enjoy the wonderful views that this bay had to offer.



Following breakfast, we were shuttled ashore by zodiac to the two designated landing sites, those wanting to do the 'fast and furious' hike went first. This hike was led by Adam, Pablo and Sara and climbed to an elevation of about 200 meters above sea level, reaching a view point where we could see both Erikbreen and Monacobreen, the latter being the glacier where we would head for our afternoon landing.



The second site was designated to all those who wanted to do walks at a more leisurely pace and have more time to take photos. The main feature of this landing site is an old trapper's hut which was built in the 1920's by a trapper called Hilmar Nois who used to visit the area for several weeks at a time during the winter. It was used over a couple of decades before the

trapping and hunting became obsolete in these regions. Now this hut belongs to the Sysellmannen (Svalbard Government and law enforcement Bureau) and is used for logistics and occasionally by the locals from Longyearbyen and Ny Alesund who are looking for a weekend or holiday retreat.

Plenty of polar flowers and mosses were observed, and we could also detect the effect of annual freeze thaw erosion on rocks, as well as see several variations of conglomerates and erratics in the landscape. In terms of fauna, most people saw plenty of birdlife including Skuas, Kittiwakes and Snow buntings and there were lots of reindeer tracks to be seen, but the creatures themselves alluded us.

As the groups reconvened back at the landing site, for those feeling brave a polar plunge was offered! A few daring souls took to the frigid waters of the Arctic ocean, to come out reinvigorated and definitely ready for a hot shower.

After a busy morning of activities most people were happy to head back to the ship just before 1200, for a well-received lunch and a little rest.

Around 1430 we wrapped up warmly and boarded the zodiacs once again and headed towards the renowned Monacobreen, the plan was to cruise the 4km long ice face. The glacier is named after Duke Albert I. of Monaco who led and funded the expedition that mapped the glacier in 1906. During the cruise we admired the beautiful scenery, which was



dotted with an array of bird life, including Kittiwakes, Arctic terns, Black guillemots, Arctic skuas, Long-tailed skuas and Glaucous gulls, most of which were busy feeding in the nutrient rich waters. A few lucky zodiacs also encounter a Bearded seal that was spotted swimming between the ice.



It had been a cold afternoon so most headed to the observation lounge on their return for a hot drink, or something a little stronger to warm themselves up. At 1830 we gathered for our daily recap where Adam told us the plans for tomorrow, which was to head to the ice pack to try and find our first polar bear of the

voyage! This was followed with a short explanation about Monacobreen from Jochem and a quick summary of how to identify different seals by Sara.

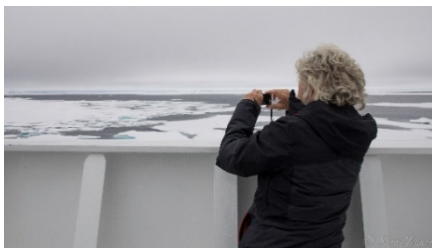
Over dinner people reflected on the day's events, there was definitely a very positive and upbeat vibe in the dining room and you could feel the excitement as to what our day in the ice tomorrow could bring.



Pack Ice – in search of Polar Bears 80°42' N 18°55'E

Wind: NW6-8	Weather: Overcast	Sea state: Calm/ice
Air temp: -2C	Water temp: 2C	Visibility: Good

Very early in the morning with a slight overcast sky and the expedition guides were already on the bridge looking for polar bears in the ice at around 0600. With our beautiful ship the bridge had navigated from our previous destination towards the north-east in the direction of the Seven Islands in order to find ice. And with the ice would hopefully we could find the polar bears.



The captain also wanted to check how the conditions were in the ice, as this would affect our plans for the following days. We went over 80° North early in the morning and after a few hours we found some promising ice conditions.

For the majority of the guests onboard this was the first time in the pack-ice and for this reason we had a beautiful morning outside taking pictures and enjoying this remarkable landscape.

After a good morning in the ice and a warming lunch, especially for those who had been outside all morning, the expedition staff decided to move the ship into another area, with the hope of being successful for polar bears in the afternoon.



After lots of eyes looking for polar bears our first bear was spotted by the bridge watch. A large bear, which was laying on the ice and looked like it was sleeping. For this reason, we decided to stay a little bit away from the animal so that we did not disturb it. It was important to allow the bear to rest if it needed it. But fortunately for us, after a little bit of time looking at the sleeping bear it decided to wake up and have a walk around. It was looking at us and giving people on board a great chance to get some good photos.



After an incredible sighting with this magnificent creature people on board were very happy after a day in the ice. Ready for a good nights sleep and another day in the ice looking for more incredible encounters. Thank you very much Arctic!!!

Day 5: 14th August 2019

Pack ice – in search of Polar bears

Wind: NW 3-4	Weather: Fog	Sea state: Calm/ice
Air temp: -1C	Water temp: 1C	Visibility: Poor

We woke up at 0745, surrounded by the beautiful landscape of the pack ice and a fog bank far away in the distance, which made the view amazingly atmospheric. Breakfast was served in the dining room, from where we could admire the scenery and start to feel the first bumps as Hondius pushed through the ice.



While cruising the pack ice, staff and some of the passengers were up on the bridge exhaustingly looking for Polar bears through binoculars and scopes. Yellow pieces of ice confused many, and then as it started to snow, it got even



more difficult to see in the distance. This didn't discourage the crowd, who took one of the scopes to the outer decks and stayed on watch even during Catherine's lecture on the Arctic Ocean, who helped us understand how everything is connected up in the Arctic, and how much life depends on the extension and health of the sea ice.

At 1230 lunch was announced, after an intense morning of scouting without any luck. Midway through it, we heard the much-anticipated call on the public speakers: A Polar bear had been spotted from the bridge! We rushed our desserts and left the dining room, wrapped up warm, grabbed our cameras and off we went on the outer decks to enjoy the sighting. It was such a different experience from the day before, with the snowflakes falling down and the bear peacefully roaming around, all of us in complete silence we could really feel the immensity of nature.

The Polar bear (*Ursus maritimus*) is the largest bear species on earth, and we have been able to witness its majestic presence twice so far. It was very interesting also to see its yellowish / creamy coloration, which certainly helped us find them amongst the pristine arctic sea ice.



After spending some time observing the behavior of the bear, we continued our way South East looking for more wildlife and enjoying the sound of the ship pushing the ice away.

At 1500 Sara presented a lecture on the main topic of the day: Polar Bears. Followed by tea time, which was suddenly interrupted by a Minke whale swimming super close to the ship! Everybody went to the outer decks to check them out, take some pictures and film the show this great mammal was offering us. From the biggest bear in the world, to the smallest baleen whale, it felt like a mind-blowing day!

Recap was just around the corner, so we took off our warm layers to get a drink and join the team at 1830 in the lounge to hear about the plans for tomorrow and the experiences we had had today through some slides from Pablo and Jochem.

Of course, the day finished with another great dinner prepared by the galley team, followed by drinks in the bar staring at the scenery while we sailed East towards our next destination: Kinnvita, a place where not many staff have been before but certainly all were very excited to explore.



Day 6: 15th of August 2019

AM – Kinnvika 80°04' N 18°21' E

PM - Søre Russøya 80°04'N 18°21'E

Wind: NE F3	Weather: Fog	Sea state: Calm
Air temp: 0C	Water temp: 4C	Visibility: Moderate

The day with the earliest wake-up call of all days! Or maybe not? What a pleasant surprise to see a note on the door of the dining room, indicating that we all could sleep one hour more: breakfast starts at 0700 instead of 0600.

The reason for this change of plans came from a multitude of sources. Ice floes forcing us to reduce speed, an expected length of the zodiac trip to the landing

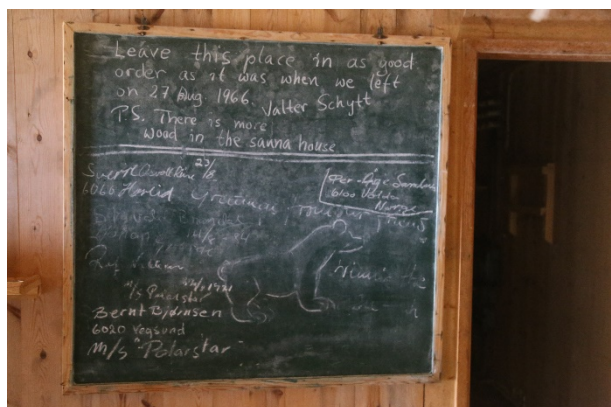
site of multiple nautical miles and low visibility all added up to a clear 'negative' on our intended landing at Lagøya. Full speed forwards, direction Kinnvika!



A first landing on the second biggest island of the Svalbard Archipelago: Nordaustlandet! The moonlike barren landscape at Kinnvika truly fits the description of a polar desert. The wet

snow we got this morning was probably a welcome bit of moisture for the plant life here. Barren at first sight, Kinnvika actually shows the full pallet of colours

once you start looking on the small scale. The guides created a perimeter for the passengers to roam around freely, allowing each and every one to search for colour and amazement in their own time.



Several huts form the actual heart of Kinnvika. Most of them were built to be operated by Swedish and Finnish researchers during the International Geophysical Year 1957/58. Some huts

have again been in use during the International Polar Year in 2006/07 and are therefore still in good shape, which allows for a visit inside them.

Jochem took a small group of passengers on a quest to find fossilized stromatolites, the oldest fossils of Svalbard and the very first organisms (cyanobacteria) known to live from carbon dioxide, thereby secreting oxygen and basically allowing life as we know it to evolve! Spectacular, but not easy to find nice fossils here!

Due to shifting our initial afternoon landing forwards, Adam, our Expedition Leader, (ever flexible) decided to use a completely new landing site, where none of the guides had ever been before. Søre Russøya, another jewel piece of polar desert. And yes, here the stromatolite was found in its original, unaltered beauty, as was a lot of plastic, which we happily collected to take back to Longyearbyen as part of the Clean Up Svalbard initiative.





With everybody intrigued by the diversity we found in these deserted stony environments, we can speak of a beautiful moon-landing day, full of 'stone rings', stromatolites, red-throated divers, a polar bear skeleton, geocaching and raised beaches! In the evening, the snow had stopped falling and the sun dared to show

itself through a thinner and thinner veil of clouds. Let's see what tomorrow brings! Maybe some Guillemots at Alkefjellet?

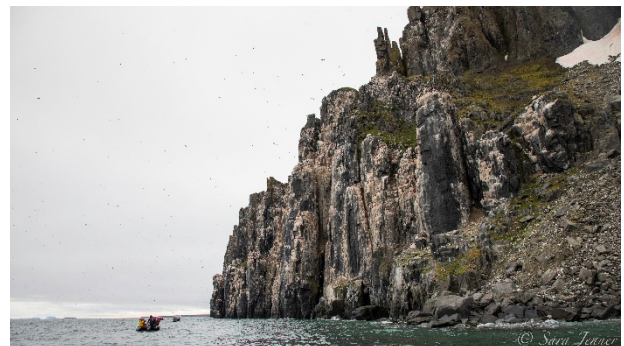


Day 7 – 16th August 2019

AM – Alkefjellet 79°61' N 18°42' E
PM – Torellneset 79° 36' N 20°75' E

Wind: WNW – SE F2-3	Weather: Cloudy	Sea state: Smooth/slight
Air temp: 3C	Water temp: 5C	Visibility: Good

Through the night we sailed south into the Hinderloppen Strait, and awoke in the morning in front of Alkefjellet – a beautiful cliff coastline teeming with Guillemots. As we left the ship for our zodiac cruise at the colony we were met with an incredible sight and a brisk breeze. The cliff coastline is shrouded from above by ice.



Cruising along the coastline gives us a rare opportunity to be close to this huge colony of 60,000 breeding pairs of Brunnich's Guillemot, with many thousands of birds flying in and out of the cliffs, bringing food to their young, who will leave the nest soon, and take to the sea. Indeed, we saw many young chicks in rafts on the water, having already taken the leap from the steep cliffs. They sat on the water with their parents; and here they will stay until they have grown and developed enough to take flight themselves.



In the lower slopes of the cliffs we spotted an Arctic fox; on the lookout for its next meal. The Arctic fox will spend these fruitful months catching and storing as many eggs and chicks as possible in its den, in order to survive the barren winter months, after the birds have left the colony.

Further along from the colony we cruise in front of the glacier Odinjøkulen, with a towering edge and majestic waterfalls. We returned to the ship, and were thankful for the warm welcome and delicious lunch prepared by the very talented galley team.

During lunch we sailed further south to the polar desert area of Torellneset. Before leaving the Hondius, we could see many large shapes on the beach! The area is a common haul out site for Walrus, and we were treated to a large number of walrus; estimated around 300 animals, on this afternoon. The 'Fast and furious' hikers landed first on the beach, and after some time watching the Walrus on the beach, a hike was led up and over the raised beaches of Torellneset; strolling along the proglacial meltwater channels, up to the large Mariebreen glacier. The scenic group also spent some time watching the walrus; these incredible



beasts rest in large herds and are fascinating to watch as they bring their huge bodies out of the water and huddle together to rest. The unmistakable tusks are impressive and the males' tusks can grow up to a metre long. The impressive views across Hinderloppen are a beautiful back drop to both the walrus haul out and the hikes taken over the raised beaches.

After another beautiful dinner in the restaurant, the Hondius cruised along the magnificent Brasvellbreen glacier, which originates from the third largest ice cap; Austfonne. A beautiful icy landscape, with magnificent glaciers surrounding it. Late in the evening a blow is seen, and we are soon watching one of the rarest whales; the Bowhead whale, feeding close to the ship. These animals were decimated during early whaling years in the North Atlantic, and their current population numbers are in the low hundreds around Svalbard, so to see one is a rare and surprising delight. After a wildlife filled day in Svalbard, we head to bed to dream of flying birds, walrus and whales.....



Day 8 – 17th August 2019

AM – Isnjornodden 78°20' N 21°63' E

PM – Ship cruise!

Wind: SW F4-5	Weather: Partly cloudy	Sea state: Smooth
Air temp: 4C	Water temp: 5C	Visibility: Good

The morning started off with an unexpected announcement, overnight Adam had had information from some other ships in the area that there was a walrus carcass that had some polar bears enjoying it. He decided to take a gamble and go for the polar bear sighting, rather than do our planned landing. A staff scout boat went out to check the behavior, ensuring no disturbance was caused and see what other wildlife there might be. Shortly afterwards Adam announced our plans to the passengers, that we would zodiac cruise so that we could all enjoy this incredible sighting. All 15 zodiacs took to the water with a group of 7 boats going first in close formation to try and ensure we didn't disturb the bears. We were treated to watching a mother polar bear and her two cubs who were most likely around two years old. There was also another polar bear nearby waiting for its turn to feed. It was spectacular to see these magnificent creatures up close and enjoying its breakfast. Also nearby there was a mother arctic fox with two cubs, equally waiting their turn to feed. On the hill we had spotted another two bears who didn't come down to join the feast this morning but it was incredible to know there were six bears in such a small area.



We headed back to the Hondius with huge smiles for all! After lunch the staff headed out to scout for bears at Sundneset, a few minutes into their scouting Pippa spotted a bear on a nearby beach. This meant that the staff needed to evacuate the landing site to ensure their safety. Polar bears can move quickly! So we moved onto

plan B..., which was to head to a place called Kapp Lee and do a landing there. This was an hour away so everyone enjoyed another cup of something hot while we waited. Unfortunately, the polar bears were at it again, and one was spotted from the bridge sleeping on the



hill above our potential landing site. Just goes to show how important the scouting process is!

So we moved to plan C and decided to start sailing to our next days landings, meaning that we could hopefully do two activities tomorrow. Claudia gave us a lecture at 1600 on climate change and the importance of what is happening in the Arctic.

The sun came out and lots of passengers enjoyed the evening sunshine watching the birds out on deck, before recap where Adam shared with us some of the photos from our 'Clean up Svalbard' which was a brilliant achievement for all involved. We then all enjoyed our delicious dinner and looked forward to whatever tomorrow may bring!



Day 9 18th August 2019

AM – Burgerbukta 77°04' N 16°00' E

PM – Samarinvagen 79°09'N 16°33'E

Wind: W F1	Weather: Partly Cloudy	Sea state: Smooth
Air temp: 4C	Water temp: 5C	Visibility: Good

We woke up this morning as we entered Hornsund Fjord, the weather was calm and some clouds hung from the high cliffs of the entrance of Burgerbukta, our designated site for our morning activity.

Burgerbukta is a narrow fjord of about 2.5 kilometers wide on the north side of Hornsund. This fjord then divides into two bays, in the middle a jagged spine mountain resembles the back of a hedgehog.

Hondius anchored in the middle of the fjord, and as we had breakfast, zodiacs were lowered into the water, and the expedition staff team got ready for the zodiac cruise into the west branch of this amazing place. At 0900 we started



boarding zodiacs and started our way into the western branch of Burgerbukta, Vestre. As we penetrated into the Fjord, we were able to enjoy the maze of geology that the steep cliffs of Sofiekammen, the mountain ridge on the west side of Vestre. These cliffs show an incredible array of uplifted sedimentary rocks, from dark Triassic sandstone to yellowish Carbonate and Permian carbonates. All in this stunning cliff, that bares the marks of river runs tainted with reddish iron oxide. Some Puffins, Guillemots and Kittiwakes flew around the boats, dove into the water, and gave us a great welcome into the bay. Paierlbreen, the 2 kilometer long glacier in the back of the bay, has been really active in the last couple of weeks. This has left the fjord filled with brash ice, bergy bits and icebergs of all different sizes and as many different shades of blue you could ever imagine. As we snaked through the bits of ice, the few clouds in the sky dissipated and the sun started shining onto the glacier and ice in the bay, which glittered and sparkled this maze of never-ending ice. At about a kilometer away from the front of the glacier we were finally stopped by the amount of ice in the water. Here we took some time, just sitting in the zodiacs, contemplating the views that Svalbard gifted us with on this spectacular location. Time flew, and it was already lunch time when we finally made it back onboard.

As we enjoyed our lunch, Hondius repositioned to the south side of Hornsund into Samarinvagen. This is a fjord that holds a stunning glacier on its southern end, and as it has been retreating, it has exposed a small mount on its west side, that we eventually used as a view point on the afternoon excursion.



At 1500 we got back on the zodiacs for a split activity. Half of us went for a landing and the other half went for a zodiac cruise into the front of the glacier for about an hour and a half, to then exchange positions, so we all had the chance to experience the views of this 3 kilometer wide glacier. A surprise awaited us

amongst the bits of ice... our Expedition leader had arranged apple and cinnamon drinks with optional Drambuie on the zodiacs! What a way to top the zodiac cruise. Our experience on shore was just as exciting. The expedition team had arranged a perimeter landing for us, giving us the chance to climb up onto the retreating glacier and getting to a vantage point to have an over view of the bay. This short hike started on the moraine of an old glacier that now is just a thin layer of ice covered with rock that the glacier once scraped from the nearby mountains. These conditions made this glacier safe enough to walk on it, where Jochem waited for us and explained the incredible features we were seeing. The sun was shining bright in the sky as we approached Mariela on the top of the hill beside the glacier. The view was certainly incredible from up there.



We came back down to the landing site and took a ride on the zodiacs one more time back to Hondius. Here we went through another session of recap and briefing, were Bjarni told us about some of the women polar explorers, and Sara was able to finish her recap about Arctic fox, that was interrupted by whales the previous afternoon. Adam told us about the plans of the next day, and DJ, the Hotel manager, gave us the surprise of a special dinner... BBQ on the outer deck! The sun was still shining, while we enjoyed our dinner, and at the end we all danced to some fun tunes as Hondius slowly sailed out of the bay into a never-ending sun set. What a day!!!



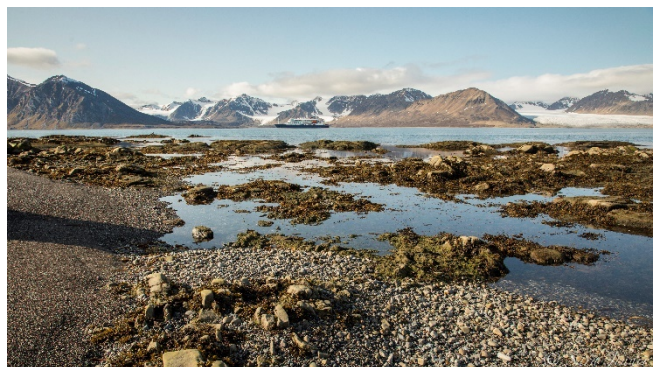
Day 10 – 19th August 2019

AM – Swarthamaren 77°32'N 14°45'E

Wind: E F4	Weather: Cloudy	Sea state: Smooth
Air temp: 6C	Water temp: 8C	Visibility: Moderate

We woke up to a beautiful morning with the sun shining, it looked a great morning for a landing. However, our plan A was not to be, when arriving into the area the bridge crew and staff spotted a tiny little white creamy dot far up on shore... Up go the binoculars and what do we see? Yet another polar bear shooing us away from our landing site.

Adam went to work on finding us another area where we could go on shore for a morning walk. After an eventful morning of spotting polar bears swapping landing spots and rearranging our schedule, we managed to secure a landing at Swarthamaren. There we enjoyed a walk through some beautiful tundra while snow buntings, purple sandpipers and some juvenile seagulls flew around.





When we got back on the ship, we made our way to Bamsebu. A sight known for being a center for beluga whaling in the area around the 1930s. Huge piles of skeletal remains from the belugas could be seen there. It is said that the bones at the sight belong to somewhere around 550 individual animals. In a small cove not too far away from the landing site there was an old winch, used to haul in a great net that

would be laid out across the cove to trap the belugas. There the hunters could easily finish they're bloody business and get them up on the beach. Because of all this whaling in the past the beluga stock dropped dramatically, but luckily the size of the stock is now slowly increasing.

While half of the passengers were on shore the other half took a zodiac cruise around some of the small islands in the vicinity of Bamsebu. There we found three old upturned boats rotting away at the beach. Those islands are a popular nesting area for common eider ducks. That suited the Norwegian trappers in the area well, as they were able to supplement their income with collecting eider duck down from the nests.



Similarly to the Dutch whalers in the 17. century the whalers of Bamsebu were mainly after the whale rich blubber that could be processed into oil.

Mark later gave a short talk on the topic of whaling during recap and Sarah educated us on some of the special features of the reindeers of Svalbard. Of which we have so often seen grazing in the distance during our time on shore.



Day 11- 20th August 2019

AM – Poolepynten 78°44'N 11°88'E

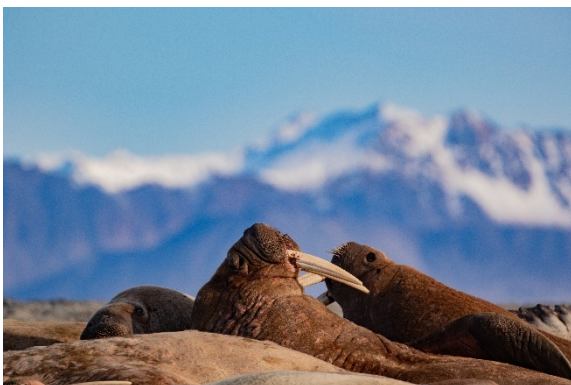
Wind: NE F5	Weather: Rain/Fog	Sea state: Slight
Air temp: 4C	Water temp: 9C	Visibility: Good - poor

After 10 days of traveling on board a ship many things had probably become routine. Some say waking up to Adams mesmerising voice in combination with breakfast from the Hondius kitchens are the perfect way to start the day. Outside the weather was sunny and looking promising.

Our first activity of the day was a landing at Poolepynten which is a well-known walrus haul out. The walrus were not as great in number, or as energetic as we found in Torrellneset, but a privilege none the less to have two quality encounters with one of the most peculiar creatures of the arctic.



The Walrus relaxed on the beach totally unbothered by our visit. One walrus rolled itself off the beach and was later joined by another one going out for a swim.



Next to the walrus some birders with a keen eye may also have noticed a greater blackback gull, the largest gull species in the world. The greater blackback is much less common in Svalbard compared to other

species, for example the glaucous gull.

On the shore we became aware of some rubbish on the beach. The crazy thing is that people are actually forbidden to pick up the trash by the Sysselmannen. Although this sounds very odd at first it is all for a good reason, as a survey is being regularly conducted on plastic accumulation on the beach. Most of the passengers also walked over to the two ponds that are close by the walrus. In spring the ponds are favoured nesting areas for birds such as arctic turn and red throated divers. Close to the ponds some of us also found very defined footprints from a polar bear that travelled through the area.





While half of the passengers came on shore the other half were treated to a history lecture by Mark, who talked about the different industries that people have undertaken here on the northern edge of the world. From the days of exploration and mining to the tourism industry that holds up the economy of modern-day Longyearbyen.

The afternoon landing was supposed to take place at Alkhornet. After meticulous scouting from the bridge the staff were confident that the area was most likely polar bear free and proceeded with landing preparations. This time though it was not our white fluffy polar bear friends that thwarted our landing, but the elements. When the staff got on shore, we quickly saw that winds and waves would become an issue. As it was hard to keep the zodiacs stable on the beach due to the heavy surf. The waves made it difficult to get passengers safely onto the zodiacs from the shell doors, and keeping the zodiacs stable when landed. As safety is always the top priority our expedition leader Adam decided to abort the landing operation and head back to ship.

In the evening we were treated to a Captain's cocktail and saw a slideshow prepared by Sara showcasing our amazing voyage around Spitsbergen. Where we saw some of the best sights the arctic has to offer.



Day 12 – 21st August 2019

Longyearbaen 78°14' N 015°32' E

Wind: NW F3	Weather: Sunny	Sea state: Smooth
Air temp: 6C	Water temp: 9C	Visibility: Good

Our last day started with the last wake up call from Adam at 0700. Breakfast was shortly afterwards, and as the crew and staff were taking the luggage onto the pier the passengers made their way down the gangway to say some last goodbyes.

Our amazing journey of exploration was over, but certainly some memories had been made for a lifetime. The arctic had certainly given us a great trip despite at times making us work hard for the experience! A truly unforgettable experience.

Safe travels and we hope to see you back onboard soon!



Total distance sailed on our voyage: 1412 NM

Furthest North: 80°42.5' N - 18°55.9' E

On behalf of Oceanwide Expeditions, Captain Remmert Jan Koster, Expedition Leader Adam Turner, Hotel Manager Dejan Nikolic and all the crew and staff, it has been a pleasure travelling with you.



PHOTOGRAPHY CONTEST 2019

Your chance to win a € 1000 gift voucher for your next polar adventure.

EVERYONE KNOWS A PICTURE IS WORTH A THOUSAND WORDS, BUT DID YOU KNOW THAT YOUR PHOTOS MIGHT NOW ALSO BE WORTH A **€ 1000 GIFT VOUCHER**?

Share your experience!

Did you catch a rare seabird on the fly? Do you have a panorama of the Northern Lights filling the sky? Did you get up close and personal with a penguin? Did you capture a look of awe or wonder on a fellow passenger's face?

If you've been a passenger on any one of our past voyages we want to see your pictures.

You're free to send in as many pictures as you wish. The best pictures are the ones that capture what it's like to take one of our special expeditions to the remote and beautiful ends of the Earth.



PRIZES



€ 1000

GIFT VOUCHER

for Oceanwide Expeditions



€ 500 gift voucher

for Oceanwide Expeditions



€ 250 gift voucher

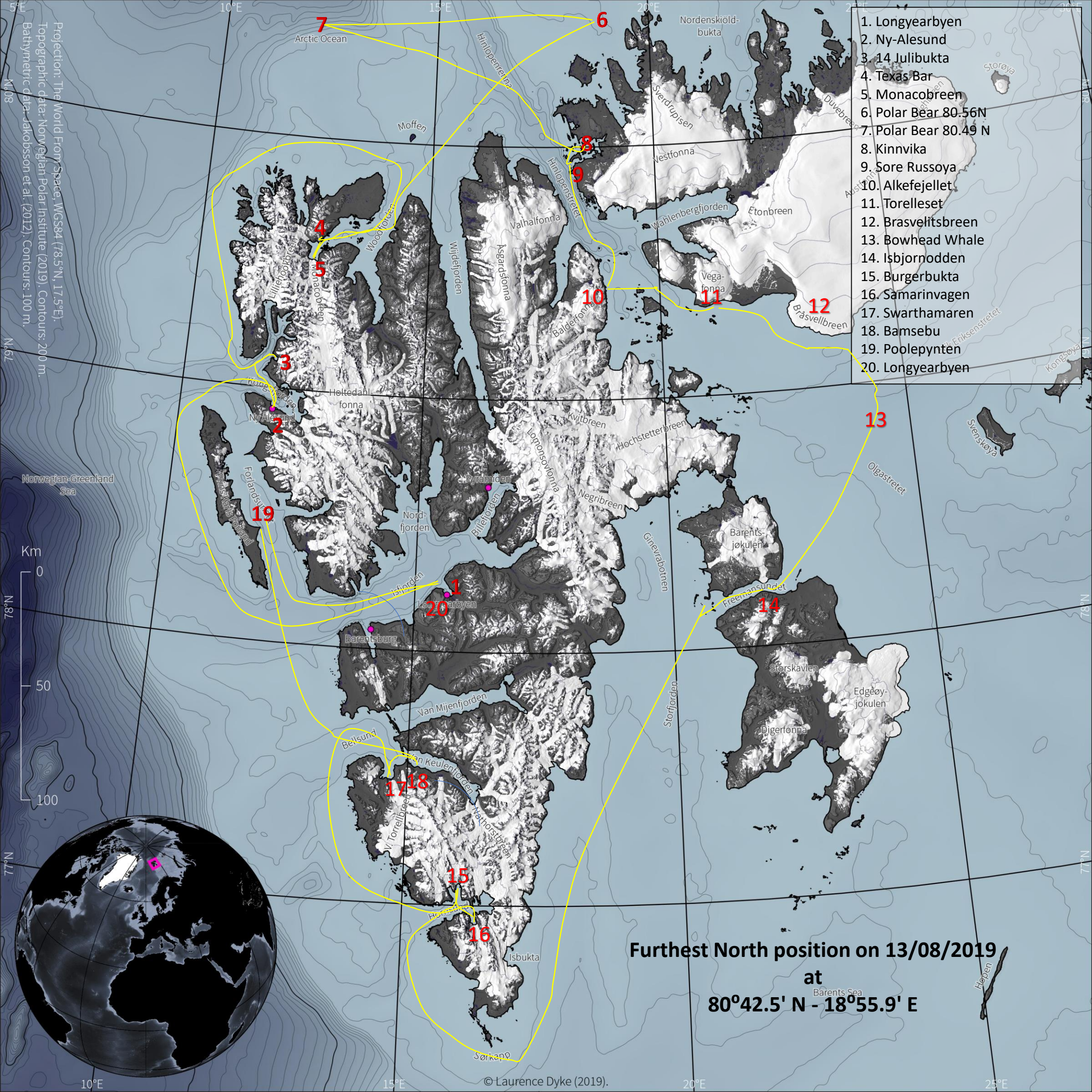
for Oceanwide Expeditions

UPLOAD YOUR PHOTO AT

WWW.OCEANWIDE-EXPEDITIONS.COM/GALLERY

The size of your photo should be between 2MB and 8MB. Our lucky winners will be contacted by e-mail and Facebook by 31 October 2019. The photography contest runs from 16 May 2019 until 30 September 2019.

Read the terms and conditions of the contest on www.oceanwide-expeditions.com/page/contest-terms



1. Longyearbyen
2. Ny-Alesund
3. 14 Julibukta
4. Texas Bar
5. Monacobreen
6. Polar Bear 80.56N
7. Polar Bear 80.49 N
8. Kinnvika
9. Sore Russoya
10. Alkefejellet
11. Torelleset
12. Brasvelitsbreen
13. Bowhead Whale
14. Isbjornodden
15. Burgerbukta
16. Samarinvagen
17. Swarthamaren
18. Bamsebu
19. Poolepynten
20. Longyearbyen

Furthest North position on 13/08/2019
at
80°42.5' N - 18°55.9' E

Birds and Mammals of Svalbard 10-21 August, 2019

English Name	Latin	German	中文	Dutch	1	2	3	4	5	6	7	8	9	10	11
Great Northern Diver	<i>Gavia immer</i>	Eistaucher	白嘴潜鸟	Ijsduiker						x					
Red-throated diver	<i>Gavia stellata</i>	Sternaucher	红喉潜鸟	Roodkeelduiker						x			x		
Northern Fulmar	<i>Fulmarus glacialis</i>	Eissturmvogel	北方暴风鹱	Noordse stormvogel	x	x	x	x	x	x	x	x	x	x	
Pink-footed Goose	<i>Anser brachyrhynchus</i>	Kurzschneiblgans	粉脚雁	Kleine rietgans		x									
Barnacle Goose	<i>Branta leucopsis</i>	Weisswangengans	白颊黑雁	Brandgans	x	x	x				x	x	x		
Common Eider	<i>Somateria mollissima</i>	Eiderente	欧绒鸭	Eidereend	x							x		x	
Sanderling	<i>Calidris alba</i>	Sanderling	三趾鹬	Drieteenstrandloper			x								
Purple Sandpiper	<i>Calidris maritima</i>	Meerstrandläuter	紫滨鹬	Paarse strandloper	x	x				x	x				
Pomarine Skua	<i>Stercorarius pomarinus</i>	Spatelraubmöwe	中贼鸥	Middelste jager						x					
Arctic Skua	<i>Stercorarius parasiticus</i>	Schmarotzerraub-m	短尾贼鸥	Kleine jager		x	x		x	x	x	x			
Long-tailed Skua	<i>Stercorarius</i>	Falkenraubmöwe	长尾贼鸥	Kleinste jager		x									
Great Skua	<i>Stercorarius skua</i>	Skua	大贼鸥	Grote jager			x					x	x		
Glaucous Gull	<i>Larus hyperboreus</i>	Eismöwe	北极鸥	Grote Burgemeester		x	x	x	x			x			
Kittiwake	<i>Rissa tridactyla</i>	Dreizehenmöwe	三趾鸥	Drieteenmeeuw	x	x	x	x	x	x	x	x	x	x	x
Ross' Gull	<i>Rhodostethia rosea</i>	Rosenmöwe	楔尾鸥	Rossmeeuw								x			
Ivory Gull	<i>Pagophila eburnea</i>	Elfenbeinmöwe	象牙鸥	Ivoormeeuw					x						
Arctic Tern	<i>Sterna paradisaea</i>	Küstenseeschwalb	北极燕鸥	Noordse stern	x		x			x	x	x	x	x	x
Common Guillemot	<i>Uria aalge</i>	Trottellumme	崖海鸦	Zeekoet		x				x				x	x
Brunnich's Guillemot	<i>Uria lomvia</i>	Dickschnabellumm	厚嘴海鸦	Dikbekzeekoet		x	x	x			x			x	x
Black Guillemot	<i>Cephus grylle</i>	Gryllteiste	白翅斑海鸦/黑海	Zwarte zeekoet		x	x	x	x	x	x	x	x	x	x
Little Auk	<i>Alle alle</i>	Krabbentaucher	小海雀	Kleine alk		x		x	x			x	x	x	x
Puffin	<i>Fratercula arctica</i>	Papageitaucher	海鹦	Papegaaiduiker	x	x					x	x	x	x	x
Snow Bunting	<i>Nyropteryx nivalis</i>	Schneeammer	雪鹀	Sneeuwgorst		x	x								
MAMMALS															
English	Latin	German	中文	Dutch	1	2	3	4	5	6	7	8	9	10	11
Walrus	<i>Odobenus rosmarus</i>	Walross	海象	Walrus						x					x
Bearded seal	<i>Erignathus barbatus</i>	Bartrobbe	髯海豹	Baardrob		x		x	x	x					
Harp seal	<i>Pagophilus</i>	Sattelrobbe	格陵兰海豹	Zadelrob											
Harbour seal	<i>Phoca vitulina</i>	Seehund	斑海豹	Gewone zeehond		x			x						
Minke Whale	<i>Balaenoptera acutorostrata</i>	Zwergwal	小须鲸	Dwergvinvis					x						
Fin Whale	<i>Balaenoptera physalus</i>	Finnwal	长须鲸	Gewone vinvis								x			
Humpback Whale	<i>Megaptera</i>	Buckelwal	座头鲸	Bultrug	x										
Bowhead whale	<i>Balaena mysticetus</i>	Grönlandwal	弓头鲸	Groenlandse walvis							x				
Beluga	<i>Dezhnevius leucas</i>	Weisswal	白鲸	Beloega										x	
Polar Bear	<i>Ursus maritimus</i>	Eisbär	北极熊	Ijsbeer				x	x			x	x	x	
Arctic Fox	<i>Alopex lagopus</i>	Polartuchs	北极狐	Poolvos		x					x	x		x	
Reindeer	<i>Rangifer tarandus</i>	Svalbard Renntier	北极驯鹿	Rendier	x	x				x	x	x	x	x	x

Adam Turner, FRGS - Expedition Leader



Adam was brought up in countryside of Essex, England. He began sailing at the age of 9 and began working on the local river aged 12 before leaving school.

By 16 he had a small fishing boat and was working on boatyards and taking tourists to see the local seal colonies as well as helping out on the local Lifeboat.

Adam then joined HM Forces and was posted to Northern Ireland and in the UK, he also served in Kenya as a boat operator. In 2002 Adam joined the Police and spent several years on a specialist unit working across the

UK with his search dog Charley.

Since being a young lad Adam had dreamt of working in the Antarctic like his Uncle had done in the late 1980's, and in 2014 Adam left the Police to work as Boating Officer for British Antarctic Survey at King Edward Point, South Georgia where he spent just over a year.

Adam studied at Middlesex University and often gives lectures on history, in 2017 he was elected as a Fellow of the Royal Geographical Society, and he now works as guide and Consultant.

Adam holds a commercial masters certificate and instructs in several marine disciplines, he enjoys diving, climbing, kayaking and outdoor activities.

Pablo Brandeman - Assistant Expedition Leader



Born and raised in Argentinean northern Patagonia, now living in Ushuaia, Tierra del Fuego, grew up with a Fishing Guide dad that pushed me not only into adventure activities but also into guiding and the tourism industry. I love Skiing, Snowboarding, Skateboarding, Surfing, Paragliding, Kitesurfing, Climbing, Mountaineering, Boat driving and many other thrilling activities! I am a well-seasoned Antarctic guide, having worn all the different hats as an expedition staff, with over 150 trips to the southern continent... but just a few to the Arctic region! Totally excited about this experience and looking forward to seeing Polar Bears, Walrus and Puffins!

Claudia Holgate - Assistant Expedition Leader



Claudia, or “Clouds” as she is known on the ship, is a Polar guide with a passion for sharing her knowledge and experience. Claudia, a South African native, has worked at all levels in government, for the United Nations, as an independent environmental consultant and as an academic, but being an expedition guide is the best job by far. She has an MSc. and a Diploma in Higher Education, and considers herself to be a general naturalist, able to speak authoritatively many natural history subjects, from climate and geology to birds and marine biology. Her research has focused on climate change and she will

point out some of the changes that we are seeing during our journey. Claudia’s contribution to geographical research, teaching, outreach and exploration lead to her being elected a Fellow of the Royal Geographical Society (FRGS).

Claudia’s has been working in the polar regions for 12 years and she still never tires of the White Wilderness and she will tell you that each trip is different and special in its own way.

Claudia is also a Critical Care flight paramedic and when she is back home in South Africa, she teaches doctors and nurses courses in Advanced Cardiac, Paediatric and Trauma Life Support and is currently working on a PhD in Emergency Medicine through the University of Cape Town. In her time off, Claudia loves going into the African bush, photographing, hiking and birding, as well as, doing community work as part of Soroptimist International (Johannesburg club).

Jochem Braakhekke - Expedition Guide



Being born in one of the more mountainous regions of the Netherlands, with hills up to impressive heights of almost 100 m a.s.l., young Jochem was naturally attracted to alpine environments and the extreme importance of ice ages.

As a 2-year-old, still covered in baby seal blubber, he got introduced to hut life in the Austrian Alps. The black and white pictures exhibited in those huts, depicting huge glacier tongues and impressive ice-falls with noble men wearing hats posing on them, left a lasting impression. What in the world has happened to those glaciers since then!

It wasn't until two decades later, that Jochem got reinjected with the glaciology virus; during his Bachelor's in Earth Sciences at the University of Amsterdam, Jochem spend a semester in Longyearbyen, studying Arctic and Marine Geology. In order to be a little bit closer to the tiny remnants of the Last Ice Age, he moved to Switzerland and continued studying geology and glaciology at the ETH Zürich.

Jochem is particularly interested in the interplay between glaciers and bedrock, the so-called field of Glacial Geology. He has extensive knowledge about the past ice ages and the related tools and clues presented to us by the current landscape; silent witnesses of the incredible power of ice.

In contrary to popular believe, glaciology is not a dying field: the cryosphere is a big box of discoveries yet to be made and it is Jochem's goal to get as many people involved in unboxing those.

Catherine Buckland - Expedition Guide



Although born inland in the UK this didn't stop Catherine from developing a love for the water and sea. She began sailing at an early age and completed longer sea voyages as she got older. Her maritime interests meant it wasn't a huge leap to start scuba diving. Predominantly Catherine is a commercial diving instructor and diver medic based in Plymouth, on the south coast of England. Diving year-round, she trains commercial divers, including teams from the British Antarctic Survey and some work with the UK military. In between time she enjoys working for Oceanwide on their

dive trips, helping experienced tourist divers to explore these frigid waters. Land guiding for Oceanwide in the Antarctic and Arctic has enabled Catherine to really enjoy working above the water and appreciating the wildlife in these fascinating environments.

Mariela Cornejo - Expedition Guide



Mariela was born in Ushuaia, the southernmost city in the world, and lived through the process of her own land becoming the Province of “Tierra del Fuego”. Living at “the door to Antarctica” and reading stories about Nordenskjöld and the local hero, Sobral, she couldn’t avoid dreaming about adventuring even further South.

Raised far away from the city, out in the central valley of the South Andes range, it was a given to practice all kind of winter sports. Nordic skiing, Splitboarding, Biathlon, Skijoring, Mushing and Ice skating, just to name a few. She has participated in Biathlon World championships and also took part in several international competitions, giving her the opportunity to travel around the world. During summers, she likes to do all kind of outdoor activities including camping in the mountains, hiking, paddling, kitesurfing and climbing.

Her first season in Antarctica was in 2014, and since then, the polar bug has infected her in such a way she can’t stop returning season after season. History, wildlife and geology of the polar regions grew as an interest, leading her to start planning her first season to the opposite region. Even though she used to spend winters in Ushuaia guiding snowmobile excursions through the forests of Tierra del Fuego and leading groups on snowshoeing expeditions and cross-country skiing adventures, this boreal summer she’s excited to be adventuring on her first Arctic season. Join her on a Zodiac Cruise, walk around the beach or out on deck to share some stories and look out for amazing wildlife!

Claudio Ghiglione - Expedition Guide



Claudio was born in Italy in 1983. Always interested in science and nature since he was young.

His first passion was, as for many other children, the dinosaurs. If he had to consider himself only as a student, he wasn't a good one because he didn't like to spend entire days inside buildings only reading books. However, he has always had a need to discover new things.

Everyone comes into the world with the need of discovery but just few people have this passion when they become adults.

After high school his tendency for the scientific subjects led him to take a degree in Environmental Sciences and then also a master degree in Marine Sciences.

After these degrees, he worked several years on different University scientific projects and in March 2017, he defended and deposited his PhD thesis in Earth, Environmental and Polar Sciences run in collaboration among the University of Siena (Italy), the Italian National Antarctic Museum (Italy) and the British Antarctic Survey (United Kingdom) with a specialization in polar benthic ecology. He took part in different Arctic and Antarctic expeditions as a researcher and as a photo guide too because, in addition to his scientific skills, he is also a professional wildlife and travel photo journalist.

Sara Jenner - Expedition Guide



For as long as Sara could remember she has had a passion for travel and searching for the wildest and most remote places on earth.

Back in the UK when she was only 10, she remembers trading in her favourite pink bicycle for the money to start her travel fund. Every birthday and Christmas she added a little more in the kitty and finally, at 18 she realised her dream of diving at the Great Barrier Reef! At that point the travel addiction was born!

Ever since Sara has been travelling the globe in search of wild and remote places and has spent many months volunteering on wildlife conservation projects in a bid to help some of our most iconic and endangered species.

Sara's love of wildlife and the great outdoors has taken her to all seven continents and she has travelled extensively in the polar regions including the Antarctic Peninsula, Falklands, South Georgia, Spitsbergen, Greenland, Iceland, Baffin Island and Canadian High Arctic. Returning to the UK, Sara used this knowledge to work in the travel industry as a polar specialist for several years, until the travel bug hit again, when she decided to swap life on the land for a life at sea and joined the Oceanwide Expedition Team in 2016.

Sara is a keen wildlife photographer and when she is not wrapped up warm in the polar regions she enjoys working as a photographic guide in Botswana, on the beautiful Chobe River and Okavango Delta, so really has a life of two halves.

Pippa Low - Expedition Guide



Pippa has worked as a marine guide and skipper for 7 years, primarily in Scotland, Australia and New Zealand. A marine scientist specialising in marine mammal research and conservation, she splits her time between the hemispheres, and loves showing the public the marine world and all it has to offer.

Growing up on the coast of the incredible Moray Firth sparked a love for the marine world and its inhabitants. Spending every spare minute in, on or under the water; professional life reflected this love from a young age, becoming an instructor in

various marine disciplines and going on to study Marine biology at university in Scotland, then later, Australia.

Upon completion of her degree, Pippa worked in Australia on marine science research projects as a marine mammal observer, scientific diver and research assistant. After returning to Scotland, Pippa set up a wildlife tour boat company in her hometown of Findhorn and has spent the past 6 years working summer in Scotland, showcasing the wonders of the Moray coastline and wildlife to adventurers on board, and then spending the winter in southern hemisphere working on marine research projects; including photo ID, migration, distribution and behavioural studies on a range of marine mammals. She has developed a keen interest in marine mammal conservation through outreach and research. Most recently, Pippa worked in the Ross Sea on a New Zealand Ecosystem voyage, realising a life dream to work in Antarctica. On this voyage she assisted in the collection of baseline data on the World's largest Marine Protected Area; primarily on the distribution of cetaceans in this region.

Bjarni Ólafsson - Expedition Guide



Bjarni was born in Reykjavík, Iceland a country with large amount of untouched wilderness, right on the doorstep of the Arctic. When he was a child he was always fascinated in subjects such as history and nature. Iceland being one of best places for nature and wilderness enthusiast he became very interested in hiking and exploring the highlands of Iceland. Every summer he makes sure to devote ample time to explore the solitude of the Iceland's remote regions.

In university, he chose to study history and is now close to completing a masters in medieval history at the university of Iceland. At university a lot of his focus was devoted to the history of Greenland, especially the Viking settlements on the west coast of Greenland. That later turned out to be a great starting point for exploring more history related to human habitation and expeditions in the Arctic.

He started to guide for Oceanwide Expeditions in 2017 on trips in his native Iceland. After that he moved on to also guiding in Greenland, North-Norway and Svalbard alongside his studies.

Rosalie Steffen - Expedition Guide



Rosalie (Rose) is originally from Germany but is currently commuting between southern Spain and Svalbard. She grew up traveling around the world in search of pristine nature and marine creatures. Her passion for the ocean led to a degree in marine biology and oceanography in Wales as well as New Zealand and a master's degree in applied marine geophysics. Besides, she also studies scientific journalism.

Her main interests lie in the field of climate change, marine mammals and glaciology as well as sea ice. She enjoys traveling, the outdoors, water sports (sailing, surfing, diving) and adventures. Among her recent adventures is an Atlantic crossing on a sailing vessel. She lived half a year on Hawaii and half a year on an isolated Asian island where she dedicated her life to diving and sea turtle conservation. Besides, she also spent several months in Tonga and Indonesia. In addition, she spent a year in Australia where she worked as a snorkelling guide at the Great Barrier Reef and guided horseback tours through the wilderness of western Australia. Over the past years Rosalie has been working as an expedition guide, zodiac driver and lecturer in the polar regions, but her heart belongs to the crystal-clear waters of the South Pacific.

She enjoys meeting people from different backgrounds with whom she can share her knowledge with. Rosalie almost loves coffee as much as the underwater world and is more than happy to spend a coffee break with you onboard.

Mark Vogler - Expedition Guide



Mark graduated the prestigious UCLA Film School and is published travel writer and photographer. In college he became a NAUI certified diver and went on to work on film productions and underwater film crews, shooting sharks on location in the Bahamas.

In 2006 Mark heard the call of the ice and ventured to Barrow, Alaska to see the frozen ocean. In 2011 he then went South, sailing below the Antarctic Circle, where he developed an acute case of Polar Fever. In 2012, he returned to the Arctic, exploring the east coast of

Greenland and sailed deep into Scoresby Sund, the largest fjord system on earth, resulting in his first published polar piece, "Greenland's Iceberg Parade: The Greatest Show On Earth", published by international shipping industry magazine, Marine Commerce. In 2015, Mark was sent on assignment to the Antarctic Peninsula with international LGBT Travel Magazine, Man About World, to pen "Antarctica: The Ultimate White Party". Since then Mark has built his polar credentials, earning his STCW-95 certification at the California State University Maritime Academy, trained with US Coast Guard in maritime safety, and become certified in wilderness first aid.

Mark has explored and photographed both the east and west coasts of Greenland, Iceland, Svalbard, Canadian Arctic, Alaska, the Antarctic Peninsula, ventured into the Weddell Sea, and in 2017, he semi circumnavigated the Great White Continent, on a 32-day sail from New Zealand to Argentina with Oceanwide Expeditions.

Most recently, Mark spent the first 2 months of 2018 with the National Science Foundation at McMurdo Station, the United States Antarctic Research Station in the Ross Sea, and is on standby to return there to winter-over in Antarctica in 2019.

Jerry Zhao - Expedition Guide



Soon after completing his degree in Business Administration at Drexel University in Philadelphia, Jerry began a career in the travel industry. Jerry first started as an international travel consultant and tour leader and led exclusive small high-end guests throughout Europe. He then became partner in an international travel consulting firm and focused on employee training.

Searching for more adventure, Jerry joined a Chinese travel agency specializing in Polar regions as a project manager. He has travelled to the North Pole several times on the Russian ice breaker and has organized yacht charters to

Antarctica and along the way he has studied the geography, wildlife and history of the Polar regions

Andy Murray - Ship Doctor



Andy is Scottish and currently lives and works in Australia. He was born in Switzerland where he spent part of his childhood, before moving to France and finally back to Scotland.

He trained in medicine at the University of Dundee, and then worked for 2 years in Scotland before relocating to Australia in 2010. He has been living in South East Queensland and Northern New South Wales ever since, enjoying the subtropical climate and coastal lifestyle.

He has trained in Emergency Medicine and works as a consultant at the Tweed and Gold Coast Hospitals. He also has experience in pre-hospital

and retrieval medicine.

Outside of work Andy enjoys spending time in the outdoors, including ocean-based activities such as surfing and free diving. He also enjoys hiking, running and cycling. He has a passion for wildlife and photography.



OCEANWIDE

EXPEDITIONS

North and Around Spitsbergen

10th -21st August 2019

Saturday 10th August

Boarding and departure from Longyearbyen

WELCOME ABOARD!

*For the arriving passengers: luggage will be delivered to your cabin as soon as possible.
Please check to make sure you have received all your luggage!*

**** Tea and coffee are always available in the lounge bar on deck 5 ****

- | | |
|--------|--|
| ±17.30 | Welcome briefing in the lounge (deck 5).
Expedition leader Adam and hotel manager DJ will introduce you to the life on board the Hondius.
This will be followed by a mandatory 'Safety at Sea' briefing for ALL passengers. Presence will be checked. |
| ±18.00 | Departure of the Hondius. Please stay off the bridge during this time, After departure the mandatory safety drill will take place. Please listen to the announcements. |
| 19.30 | Dinner is served in the dining room (deck 4). |
| ±21.15 | Collection of rubber boots from Deck 3, we will call you by deck so please listen for announcements. |

After dinner, feel free to relax in the lounge, enjoy the scenery and discover the ship...

Please note that tonight we will be sailing into the open sea. Take your seasickness medication before you really feel the movements of the vessel. Make sure that all your belongings are put away safely and that doors and drawers in your cabin are tightly closed. Walk slowly on the ship, always use one hand for yourself and one for the ship and beware of your fingers because of doors jamming!



OCEANWIDE

EXPEDITIONS

Around Spitsbergen

10th -21st August 2019

Sunday 11th August

Safety Briefings and landing at Ny Alesund and 14.

- 07:15 Wake-up call
- 07:30 Breakfast is served in the restaurant on deck 4
- 09:00 Staff introduction followed by **mandatory** AECO (Association of Arctic Expedition Cruise Operators) and zodiac briefing in the lounge on deck 4
- 10:30 Landing at Ny Alesund
- We will offer a short guided walk to the historical mast and the beach. These will leave at 10 minute intervals starting at 11am, 11:10 and 11:20, leaving from the Statue.
- There is a shop in the settlement that accepts Kroner, Euros and card payments.
- Please keep to paths and roads while in the settlement.
- 12:00 Back onboard
- 12:30 Lunch is served in the dining room
- 15:00 Landing and zodiac cruise at 14 Juli Bukta.
- 18:30 Recap and Captains cocktail in the lounge
- 19.30 Dinner is served in the dining room (deck 4).



OCEANWIDE

EXPEDITIONS

North and Around Spitsbergen

10th -21st August 2019

Monday 12th August

Landing at Texas Bar and Zodiac cruise at Monacobreen

- 07:15 Wake-up call
- 07:30 Breakfast is served in the restaurant on deck 4

Texas Bar Landing

Please consider carefully your abilities when choosing your hike option

- 09:00 'Fast and furious' Hikers to zodiacs *Your reward will be stunning views! Please remember to bring water with you.*
- 09:30 Scenic and Beach-combers to zodiacs.
You will be able to choose your group once on the beach.

**POLAR PLUNGE AFTER HIKES- REMEMBER YOUR SWIMMING
KIT**

TOWELS WILL BE PROVIDED

- 12:30 Lunch is served in the restaurant on deck 4

Monacobreen Zodiac cruise

We will cruise along the glacier front of Monacobreen with our zodiacs

- 14:30 All passengers to the zodiacs
- 18:30 Re-cap in the lounge (deck 5)
- 19:00 Dinner is served in the dining room (deck 4)



OCEANWIDE

EXPEDITIONS

North and Around Spitsbergen

10th -21st August 2019

Tuesday 13th August

Ice!!!

- 07.45 Wake up call Welcome briefing in the lounge (deck 5).
08.00 Breakfast is served in the restaurant.

EXPLORING THE ICE; COME AND HELP US LOOK FOR BEARS!

- 12.30 Lunch is served in the restaurant.
18:30 Daily recap and plans
19:00 Dinner is served in the dining

Please note that above timings are subject to change owing to environmental factors. Additional information such as lectures may be offered. Please listen for announcements.



OCEANWIDE

EXPEDITIONS

North and Around Spitsbergen

10th -21st August 2019



- 07.45 Wake up call.
- 08.00 Breakfast is served in the restaurant.

EXPLORING THE ICE; COME AND HELP US LOOK FOR MORE BEARS!

- 10.30 Please join Catherine in the lecture room to learn more about the Arctic Ocean.
- 12:30 Lunch is served in the restaurant.
- 15:00 Learn more about Polar Bears with Sara in the lounge.
- 18:30 Daily recap and plans
- 19:00 Dinner is served in the dining

Please note that above timings are subject to change owing to environmental factors. Additional information such as lectures may be offered. Please listen for announcements.



OCEANWIDE

EXPEDITIONS

North and Around Spitsbergen

10th -21st August 2019

Thursday 15th August

Kinnvikta

- 07:00 Breakfast is served in the restaurant.
- 10:00 RED and GREEN groups to the gangway
- 10:15 BLUE and YELLOW groups to the gangway
- 12:30 Lunch is served in the restaurant.

Expedition afternoon

Please listen for announcements regarding this afternoon

- 18:30 Daily recap and plans
- 19:00 Dinner is served in the dining

Please note that above timings are subject to change owing to environmental factors. Additional information such as lectures may be offered. Please listen for announcements.



North and Around Spitsbergen

10th -21st August 2019

Thursday 15th August

Purchasneset, Lagoya and Kinnvikta

- 05:30 Wake up call.
- 06:00 Breakfast is served in the restaurant.
- 07:00 RED and GREEN groups to the gangway
- 07:15 BLUE and YELLOW groups to the gangway
- 12:00 Lunch is served in the restaurant.
- 14:00 Learn more about Walrus with Maru in the Lounge.

Please listen for announcements regarding Kinnvikta

- TBC BLUE and YELLOW groups to the gangway
- TBC RED and GREEN groups to the gangway
- 18:30 Daily recap and plans
- 19:00 Dinner is served in the dining

Please note that above timings are subject to change owing to environmental factors. Additional information such as lectures may be offered. Please listen for announcements.



OCEANWIDE

EXPEDITIONS

North and Around Spitsbergen

10th -21st August 2019

Friday 16th August

Alkefjellet and Torellneset

- 07:45 Wake up call
- 08:00 Breakfast is served in the restaurant.

Alkefjellet zodiac cruise- dress warmly

- 09:00 RED and GREEN groups to the gangway
- 09:15 BLUE and YELLOW groups to the gangway
- 12:00 Lunch is served in the restaurant.

Torellneset Landing

- 14:30 Fast and Furious group leave the ship
- 15:00 Scenic hike and Beachcombers leave the ship
- 18:30 Daily recap and plans
- 19:00 Dinner is served in the dining

Please note that above timings are subject to change owing to environmental factors. Additional information such as lectures may be offered. Please listen for announcements.



OCEANWIDE

EXPEDITIONS

North and Around Spitsbergen

10th -21st August 2019

Saturday 17th August

Kapp Waldburg and Sundneset

- 07:30 Wake up call
- 08:00 Breakfast is served in the restaurant.

Landing at Kapp Waldburg Looking for Kittiwakes and Arctic fox

- 09:00 **BLUE** and **YELLOW** groups to the gangway
- 09:15 **RED** and **GREEN** groups to the gangway
- 12:00 Lunch is served in the restaurant.

Sundneset Landing

- 14:00 Fast and Furious hiking group leave the ship
- 14.30 Scenic hike and Beachcombers leave the ship
- 18:30 Daily recap and briefing
- 19:00 Dinner is served in the dining room

Please note that above timings are subject to change owing to environmental factors. Additional information such as lectures may be offered. Please listen for announcements.



OCEANWIDE

EXPEDITIONS

North and Around Spitsbergen

10th -21st July 2019

Sunday 18th August

07:45 Wake-up call

08:00 Breakfast is served in the restaurant on deck 4

Burgerbukta zodiac cruise

09:00 **RED** and **GREEN** groups to zodiacs

09:15 **BLUE** and **YELLOW** groups to zodiacs

12:30 Lunch is served in the dining room

Samarinvagen landing and zodiac cruise

14:00 **BLUE** and **YELLOW** groups to zodiacs

14:15 **RED** and **GREEN** groups to zodiacs

18:30 Recap and plans for tomorrow

19:00 Special Arctic Dinner



OCEANWIDE

EXPEDITIONS

North and Around Spitsbergen

10th -21st July 2019

Monday 19th August

07:45 Wake-up call

08:00 Breakfast is served in the restaurant on deck 4

Camp Millar landing

09:00 **RED** and **GREEN** groups to zodiacs

09:15 **BLUE** and **YELLOW** groups to zodiacs

12:30 Lunch is served in the dining room

Bamsebu landing and zodiac cruise

14:00 **BLUE** and **YELLOW** groups to zodiacs

14:00 **RED** and **GREEN** groups to zodiacs

18:30 Recap and plans for tomorrow

19.00 Dinner is served in the restaurant



OCEANWIDE

EXPEDITIONS

North and Around Spitsbergen

10th -21st July 2019

Tuesday 20th August

07:45 Wake-up call

08:00 Breakfast is served in the restaurant on deck 4

Poolepynten landing

Owing to regulations and the size of the site this will be a split activity. A lecture will be held for those onboard the ship.

09:00 **RED** and **GREEN** groups to zodiacs

10:30 **BLUE** and **YELLOW** groups to zodiacs

12:30 Lunch is served in the dining room

Alkhornet Landing

Please listen for announcements

14:30 Fast and Furious hikers to zodiacs

15:00 Scenic and beachcombers groups to the zodiacs

18:30 Farewell cocktail and slideshow in the lounge

19.30 Dinner is served in the restaurant



OCEANWIDE

EXPEDITIONS

North and Around Spitsbergen

10th -21st August 2019

Wednesday 21st August

Disembarkation - Longyearbyen

07:00	Wake up call
07:15	Luggage in outside cabins
07:30	Breakfast

Please leave card holders and clip at reception before breakfast

08:45	Depart Hondius to busses
-------	--------------------------

**Airport busses will leave Svalbard Butiken at
11:15 and 12:00**