



**OCEANWIDE**  
EXPEDITIONS

**Arctic Ocean Expedition**  
**North Spitsbergen: Arctic Spring – Hiking Special**  
**M/V Hondius**  
**26<sup>th</sup> May 2022 – 2<sup>nd</sup> June 2022**



The MV Hondius was built in 2019 in Brodosplit, Croatia, as an expedition vessel for Oceanwide Expeditions. Hondius is 107.60m long, 17,60m wide and has a maximum draught of 5.3m and has an exceptionally high Ice class of PC6, a top speed of 15 knots and 3 diesel generators. The Hondius sails on LSMGO. Now the ship is sailing as a 176-passenger vessel with 83 cabins. Our beautiful, modern ship carries 369m<sup>3</sup> of fresh water and has a water plant producing 70m<sup>3</sup> per day. Hondius is the perfect vessel for a true polar adventure!

# **Captain Artur Iakovlev**

## **and his international crew of 74**

### **including:**

Chief Officer:	<b>Diederik Scholten</b>
Staff Officer:	<b>Elizbar Kadaria</b>
Second Officer:	<b>Kirill Buriachek</b>
Second Officer:	<b>Sven Holzhausen</b>
Third Officer:	<b>Don Buren</b>
Chief Engineer:	<b>Daniel Liliac-Zajontz</b>
Hotel Manager:	<b>William Barnes</b>
Assist. Hotel Manager:	<b>Andrius Juodvirsis</b>
Head Chef:	<b>Ralf Barthel</b>
Sous Chefs:	<b>Milos Simeunovic</b> <b>Mihai Melinte</b>
Ship's Physician:	<b>Arne Mosch</b>
Expedition Leader:	<b>Eduardo Rubio-Herrera</b>
Assist. Expedition Leaders:	<b>Sara Jenner</b> <b>George Kennedy</b>
Expedition Guides:	<b>Meike Sjoer</b> <b>Szymon Niezabitowski</b> <b>Claudio Ghiglione</b> <b>Hazel Pittwood</b> <b>Koen Jongerling</b> <b>Miriam Vermeij</b> <b>Andrew Crowder</b> <b>Laura Mony</b> <b>Juan Berenstein</b> <b>Massimo Candolini</b> <b>Andy Perkins</b> <b>George Hirn</b>

**We welcome you on board!**

# Day 1: 26<sup>th</sup> May 2022

## Embarkation, Longyearbyen

GPS position at 1200: 78°13.7' N, 015°36.1' E

Wind: E6 Sea State: Port Weather: Partly Cloudy

Air Temp: +8°C Sea Temp: +4.6°C

As the bridge team skilfully manoeuvred our ship away from the harbour wall in Longyearbyen we could not have wished for better conditions. The snow-covered mountains were reflected in the glassy, calm waters and warm sunshine was pouring in through the Observation Lounge windows.



Once the newly embarked guests had been given room keys and reunited with their luggage at their cabins it was time for the mandatory ship safety briefing. Expedition Leader Eduardo, Hotel Manager William and Chief Officer Diederik provided us with vital information regarding the lovely ship that would be our home for the next week. Dr Arne Mosch also introduced himself, reassuring guests with his presence on board for any medical assistance required.

During the safety briefing members of the Expedition Team demonstrated putting on life jackets and showed the floatation suits, both of which are stored within cabins for use in an emergency situation. After the briefing we had to put our newfound safety knowledge to use in a drill; the bridge crew sounded an abandon ship alarm and we all dutifully made our way to our muster stations, either in the Observation Lounge (station B) or Restaurant (station A). Once all guests had arrived and been checked for correct life jacket fastening, we proceed to the lifeboat boarding area on deck 6. Depending on our muster station, we were directed to a lifeboat on either port or starboard side and given further information by Second Officer Kirill Buriachek.

Our bird list had already accumulated a few species including **Black Guillemot, Northern Fulmar, Common Eider and Black-legged Kittiwake**. With the calm conditions guests and staff alike were hopeful we might also see some whales whilst transiting away from Longyearbyen along Isfjord (ice fjord).

We then had a short break before reconvening in the Observation Lounge for the welcome briefing. The information given by our Expedition Leader and Hotel Manager was very useful, but we were undeniably distracted by the incredible scenery passing by outside! We all continued to enjoy these views during dinner which followed shortly after the welcome briefing; a delicious buffet meal provided by head chef Ralf and his galley team, served by our friendly and attentive dining room stewards.

Our third and final briefing of the evening covered the regulations of AECO (the Association of Arctic Expedition Cruise Operators) which must be adhered to during our cruise. These cover matters such as how closely we can approach wildlife, how we should respectfully behave towards the beautiful Arctic environment and polar bear safety. The Expedition Team also took this opportunity to introduce themselves. After so much information over the course of the evening most people headed to bed. Those still awake were rewarded with the astonishing sight of a **Blue Whale** (the largest species, reaching up to 33m long) close to the ship on the port side! At first this appeared to be just one animal, but then a second blow was seen (the plume of spray as these ocean giants exhale). Later a much smaller species, a **Minke Whale** (up to 10m long) was also observed passing quickly by the ship.

## Day 2: 27th May 2022

# Lilliehöökreen and Ny-Ålesund

GPS position at 1200: 79° 02.2' N, 011°34.0' E

Wind: N/NW2 Sea State: Calm Weather: Overcast

Air Temp: +7°C Sea Temp: +4.7°C

We awoke to our first full day on board to enjoy a leisurely breakfast and an even more leisurely cruise down the fjord to the Lilliehöökreen Glacier. Although Eduardo, having visited this area many times, explained that the glacier front had retreated considerably over the recent past, those of us visiting for the first time we could only be struck by the sheer enormity. Not the highest of glaciers, but immensely wide and filling the valley off into its distant source, far out of our sight. The water in front of the glacier was full of pieces of ice,



large and small, and many hues of blue and white. They sparkled like jewels floating on the glass-like water as the sun shone down from a beautiful blue sky. A dark orange-brown body on a small ice floe was identified as a **Walrus** and then two more bodies, not far away, turned out to be **Bearded Seals**. Through good binoculars or a telescope it was possible to make out the impressive whiskers that give this animal its name. A gorgeous pair of **Red-throated Divers** in full breeding plumage also provided a flyover. It is hard to think of a better introduction to Arctic Svalbard!



We sailed away to reposition *Hondius* for the afternoon's activities with several more briefings followed by lunch. Action then commenced with our first multi-location shore landing. First off were the 11 skiers and their two expert guides to be landed at Tønsneset. Then another reposition to land all the remaining guests by zodiac on the pontoon at the famous settlement of Ny-Ålesund. Everyone had a chance to wander into the centre to spend time (and money!) in the shop and maybe visit the museum. All around us was the song and sight of delightful **Snow Buntings**.

Then we split into two groups to explore beyond the settlement, protected by the guide team armed with rifles. One group had a short walk to a nearby mast. This huge mast was once housed within a huge hanger and was used to suspend an airship (aka zeppelin). The hanger was removed but the mast remains as a relic to this incredible era of exploration. The second group went for a more energetic hike in snowshoes across the lower slopes of the mountains behind Ny-Ålesund. Like this morning the weather was fine, even warm, and everyone enjoyed their second introduction of the day – landing and feeling the ground of Svalbard beneath their feet. Wildlife collectively seen included **Reindeer, Ringed Plover, Barnacle Geese, Redshank** and two more **Red-throated Divers**. A number of **Arctic Terns** were seen and one of the local residents reported that they had only returned just yesterday from their incredible migration from south of the equator. Back on Hondius we met for cocktails with Captain Artur Yakovlev who welcomed us aboard and told us a little about the vessel that he is obviously so proud to command.



## Day 2: 27th May 2022

### Lilliehöökbrean: Tønsneset

### Ski Log



After a morning cruising alongside Lilliehöökbrean, we moved on to off Tønsneset and embarked the Zodiacs for our first ski tour of the week. It was also a first ski tour on Svalbard for me so doubly exciting. We had 11 guests in all, all very experienced ski tourers, one of whom was also a qualified ski guide, so we felt well within acceptable margins of safety. Nevertheless, we carefully scouted the beach for polar bears before landing. Happily, there were none, though we spotted the unmistakable tracks in the gravel within 100m of setting off towards the first snow.

The snow itself was very rotten low down, due to the high temperatures. Massimo,, who has over fifty Svalbard ski tours under his belt said he'd never seen temperatures like it. We had to take skis on and off several times on the long valley leading northeast behind Nordvåg fjellet, before getting on the glacier that led us northwest towards the summit of Olssønfjellet, our target for the day at over 900m above the Arctic Ocean.

The views from the top were sensational, with the added bonus of zero wind. The ski down the glacier was surprisingly amenable on quality spring snow that needed a firm approach. Once we hit the



toe of the glacier at around 250m, the snow turned to soup again: it was combat skiing along the valley, with skis on and off multiple times before Massimo's cunning found us a continuous strip of snow to get us within 100m of the waterline and a short walk back to the landing site where the Zodiacs had been waiting patiently for us for 5 hours.

The whole trip was rounded off nicely by a seal checking us out as we loaded skis back onto the Zodiacs. As the guests were making their way back to Hondius, one discovered his camera was missing. A short walk up the beach and the miracle happened – we found it. Memories of a trip come a close second to the actual experience itself. Achieving the summit is a great credit to the guests considering the warm weather, the paucity of snow and its appalling quality in some spots.

## Day 3: 28th May 2022

### Magdalenefjord: Gullybukta and Gravsneset

GPS position at 1200: 79°33.9' N, 010°57.9' E

Wind: Variable 1 Sea State: Calm Weather: Sunny

Air Temp: +10°C Sea Temp: +4.5°C

We woke up under a bright blue sky with beautiful sunshine and the Expedition team already preparing the day ahead. While some of the staff were scouting for polar bear from the bridge, others were planning the ski and hiking route. At 7:30am we were called for breakfast and, whilst eating, we were admiring the stunning landscape that Magdalenefjorden had to offer. Towering dark mountain peaks, up to 900m high surrounded us. They were mostly covered with snow but signs of spring were also evident where green patches of mosses and lichens were growing on areas of exposed rock. At 8:30am we were invited to meet at the shell door to board the zodiacs and get to our first real Arctic landing at Gullybukta. We went on a small hike that took us to a **Walrus** haul out on the beach. These giant beasts were sleeping in the sun, one on top of each other. It looked quite enjoyable to do nothing and just enjoy the sun, we were a bit jealous! It did appear a little too warm for the blubbery walruses though; they were fanning themselves with their flippers and covering their faces from the bright sunshine.

Groups of passengers were taken in turn to see these animals and then enjoyed a zodiac cruise around part of the fjord to observe a **Little Auk** nesting colony, watching these little black and white birds whizzing past us. Other birds seen in the area included **Black Guillemot** and **Common Eider**. A **Harbour Seal** (aka Common Seal) was also encountered resting

on ice. The morning went by very quickly and soon we were back on the ship for lunch. The dining room was buzzing with excitement as we discussed our morning outing with our fellow passengers.

We started the afternoon with another zodiac cruise. During the cruise we went back to the walrus but now to photograph them from the water giving a different perspective. We counted approximately 35 of them sleeping, all adult males,



and we marvelled at their huge tusks! After that, we went to a nearby glacier front. This was evidently very active, evidenced by lots of impressive crevasses. After the zodiac cruise we went to Gravsneset for a 2-3km hike. With the weather still very warm it wasn't long into the hike before everyone was taking off layers!



At the top of the ridge we had a nice view of the fjord, the glacier front and Hondius. It looked like a perfect post card image and we had to pinch ourselves to make sure it was reality and not a dream. Back on board everyone met in the lounge for the daily recap, excitedly chatting about the beautiful day we had shared. At 18:15pm Eduardo, our Expedition Leader, revealed the plans for tomorrow. He was followed by Hazel talking about walrus, Meike about Little Auks and Andy about skiing in Svalbard. The day ended with a delicious dinner prepared by our favorite chef Ralf and beer at the bar served by Rolando and John, our lovely bartenders. Just as we thought it was time to go to bed, Eduardo announced a polar bear sighting on the PA system!

Even though the animal was far away on the brash ice in front of a glacier it was exciting to see one in the flesh in the soft evening light. What a great end to this wonderful day! Expedition Staff kept a lookout throughout the night but the bear slept all the way through, mainly hidden from view by a large piece of ice, and barely moved. However, a consolation for being awake and on watch in the small hours of the morning was the beautiful light and a **Minke whale** feeding nearby.



## Day 3: 28th May 2022 Magdalenafjord: Adamsbreen Ski Log

Arriving in Magdalenafjord, one thing was clear – there had been many medium sized avalanches in the area. A careful scout revealed a manageable possibility in the Adamsbreen. We skinned up towards an unnamed summit just under 600m high. This involved some careful avalanche risk management, and we were rewarded with great views from the summit and an excellent ski back down on soft spring snow.





## Day 4: 29th May 2022

# Fugleholmane & BBQ Night

GPS position at 1200: 79°46.2' N, 011°26.8' E

Wind: S5 Sea State: Smooth Weather: Clear Skies

Air Temp: +10°C Sea Temp: +3.8°C

Yesterday's polar bear, the first of the trip, was sadly not re-sighted by the expedition team during their night time/early morning watch from the bridge of the Hondius. Nevertheless, the morning brought us a wonderful breakfast, a sunny day and calm waters for a morning zodiac cruise in the fjord. Today's location for our exploration was the fjord of the birds (Fuglefjorden). Roaming through the skerries and broken sea ice we found the first birds who had returned to land for the summer after a winter spent at sea. For them, spring is time for mating, making their nests and rearing their chicks. Noisy **Black-legged Kittiwake** screeched by, we saw **Black Guillemots** diving, paddling hard with their bright red legs, and two species of Eider ducks: the **Common Eider** and the magnificent **King Eider!** We were also treated to great views of **Bearded Seal** and could even hear them singing! The males make remarkable trills and whistles underwater to attract females.



In the afternoon we headed North into a nearby fjord Sallyhamna which is named after the wife of a famous hunter. Sally and Waldemar Kræmer stayed in this area for some years in the mid-20<sup>th</sup> century, hunting and trapping animals for their fur pelts, and the hut they used is visible on the shoreline. Excited though we were to visit the hut and explore ashore, the scouting team reported polar bear tracks heading southwards from the hut which looked very fresh. Our Expedition Team scouters did not see a polar bear but a nearby sailing vessel reported they had just seen one nearby.



That being the case our landing had to be aborted and so we returned to Hondius where guests were provided with a fascinating presentation from Assistant Expedition Leader Sara about polar bears. She described the 'King of the Arctic' and its incredible adaptations for surviving in the conditions of the extreme north. This was followed by an equally fantastic lecture regarding geology by Expedition Guide Laura. She told the unbelievable journey of Svalbard's rocky landmass throughout history to the present day. Later at the daily recap Expedition Leader Eduardo gave further insight into polar bears and particularly the difficulty of spotting them, showing images proving how capable they are of playing 'hide and seek' in their environment, despite being very large creatures. We then heard about the activities that awaited us for the following day, including a cruise into the pack ice, hiking and of course a landing for the skiers!

Koen also gave a recap regarding the evolution of whales. It's fair to say that everyone was surprised to hear the java mouse deer, the smallest deer species in the world, is a very distant relative to the biggest animal ever, the blue whale. After recaps, thanks to the restaurant and hotel staff, we were treated to a wonderful barbeque on the outside deck. We enjoyed delicious food, fresh Arctic air and views of the stunning landscape of Spitsbergen. For those with energy left to spare there was music and dancing until later in the evening – with daylight hours round the clock it is hard to know when exactly to go to bed!

## Day 4: 29th May 2022

### Fuglepynten

### Ski Log

Massimo and Andy went on an early scouting mission towards Fuglepynten.

Unfortunately, the coastline proved to be very rocky, making landing very problematic. In addition, the sea in the area was very exposed to the southwesterly wind with a significant swell. This was forecast to increase in the afternoon, so we took a decision to abort the ski for the day. On exiting Fuglefjord the wind was measured at 28 knots gusting to 35, so it proved to be a good call.

## Day 5: 30th May 2022

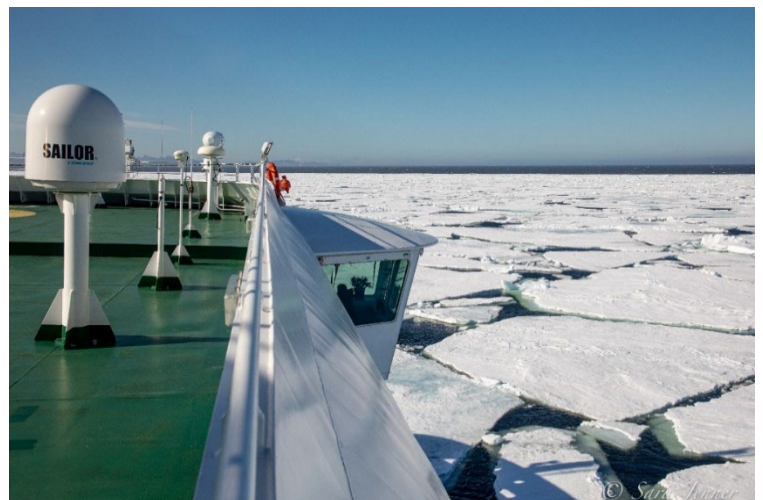
### Ice Edge, 80° North and Danskeneset

**GPS position at 1200: 79°58.5' N, 011°36.4' E**

**Wind: S/SW6 Sea State: Smooth Weather: Part Cloudy**

**Air Temp: +8°C Sea Temp: +4.1°C**

Hondius had sailed through the night to a position just north of the archipelago of Svalbard, to achieve two targets. Our first was to cross the latitude line of 80 degrees North, which we did at 23:08pm on the 30<sup>th</sup> May 2022. This is a position not many people can say they have crossed because it is so far north. Also, we had left all remaining land to our south and the north pole was now just 1,111 nautical miles dead ahead of us, as the Captain pointed the ship in that direction. However, to get there from this point you would have to overcome an immense frozen sea. The border of this sea, the edge of the pack ice, was our second target for the day and guests were very excited as this came slowly into view.



At its southern edge the ice is broken up by the combined action of the energetic sea and the warming temperatures of the coming summer. At 08:45am Captain Artur turned Hondius into the ice and we able to spend nearly two hours of cruising in this magical environment. We looked back to the iconic mountains of northern Spitsbergen and gazed forward towards the ice locked, northern pole of planet earth.

From early morning, with guests still asleep in their cabins, the expedition team had been scouting for polar bears, which hunt seals among the pack ice. Despite the good visibility and a significant number of eyes glued to binoculars and telescopes, we were unable to spot the proverbial 'needle in a hay stack'; a white bear in a white wilderness! At 12:00 noon we had to leave the ice to turn south towards Danskeneset and our afternoon activities. On the way, Syzmon gave a very appropriate and interesting presentation on the subject of sea ice.

As we entered the fjord at Danskeneset, Eduardo set out Plan A for the afternoon which was dependent on the wind dropping from its current speed for safe zodiac launching. However, we were overtaken by events that were definitely not weather related. The Noorderlicht, a sailing ship which was anchored nearby, had sighted polar bears on the shore. The expedition leaders assessed the position and invited guests to the outside decks to observe the animals that so many were desperate to see. Whilst this was happening a plan was put together to take launch the zodiacs to take guests to see the bears (from a safe distance and in accordance with Association of Artic Expedition Cruise Operator guidelines of course). From the zodiacs we could see a large male (*pictured right*) on the ice and a female in the water on the other side of the fjord. We had also heard a report that the female had one or maybe two cubs with her. As the male ambled away the female was heard bellowing loudly, both in and out of the water. She was behaving frantically, moving into and out of the water repeatedly. Eventually she left the water and the reason for her distress became apparent as and we witnessed her pull both cubs out of the water. Sadly, it appeared that both were unresponsive, presumed dead.



Back on Hondius the expedition team set about trying to work out what had just happened. Guests who had stayed on board and watched the whole event unfold through binoculars described what they had seen. Initially, the male was separated the cubs from their mother and chased them up a steep snow slope. The cubs then descended onto a spit of land and entered the water. Their mother joined them and together all three attempted a long swim across the bay. The cubs were observed trying, but failing, to climb out of the water. Devastatingly, it appears they became exhausted and drowned. Everyone gathered in the lounge to hear Sara give a recap regarding what had unfolded, including photographic evidence of the story, and supported one another in coming to terms with this difficult sighting. It cannot be denied that it was a very emotionally challenging experience but everyone also accepted that it was a part of the rich tapestry of the natural world. This would have happened whether we had been there to witness it or not.



Expedition Leader Eduardo reported this sighting and information of the incident to the relevant authorities; as the female had a tracking collar fitted and a number '33' clearly marked on her rump they should be able to identify her fairly quickly from their records.

## Day 5: 30<sup>th</sup> May 2022

### Brattekleivbreen

### Ski Log

While the ski guests were having a fantastic opportunity to observe polar bears, the guides scouted the landing for Brattekleivbreen on the opposite side of the fjord. When the party returned, they exchanged long lenses for skis, and we set off from the beach around 1830. Two hours of climb brought us to the summit at 620m. The ski down on perfect spring snow was amazing. What an incredible day: pack ice, polar bears and skiing.



# Day 6: 31<sup>st</sup> May 2022

## Amsterdamøya, Danskøya and Smeerenburg

GPS position at 1200: 79°46.1' N, 010°57.5' E

Wind: N/NE 2 Sea State: Calm Weather: Partly Cloudy

Air Temp: +3°C Sea Temp: +4.9°C

A full day of activity was planned which demanded an early-wake-up call which came as ever from Expedition Leader Eduardo. Today we got the feeling that spring was coming and snow was melting; how thankful we were to have our rubber boots as we were required to walk through the meltwater! Of course, as intrepid explorer we accepted these conditions with a smile on faces throughout visits to the islands of Amsterdamøya and Danskøya today!



At this time of year the tundra is relieved from the cloak of snow and ice which covers it over the winter. **Great Skua** and **Purple Sandpiper** were observed engaging in courtship behaviour, a precursor to nesting and egg laying. **Red-throated divers** and **Atlantic Puffin** were also seen, the latter always being a favourite with guests due to their 'cute' and colourful appearance.

Alongside the bird life it was a day for exploring history. In the afternoon we visited the historic Dutch whaling settlement of Smeerenburg (meaning 'blubber town') which used to be home to two hundred inhabitants and numerous blubber overns

used for boiling down whale flesh to obtain oil. In addition to this, further historical interest was provided nearby when we undertook a zodiac cruise to Virgohamna to see the remains of a structure used to support a huge hydrogen balloon used by Swedish engineer/physicist, Salomon August Andrée, along with Knut Frænkel and Nils Strindberg, in an attempt to reach the North Pole in 1897.



A harsh, cold wind blew in as the afternoon progressed; after days of warm sunshine this gave a stark realisation that we truly were in the far north. Guests who undertook a short walk and zodiac cruise were safely back on ship, but those who had participated in the longer hike were still ashore. It was decided to pick them up from an alternative point so they did not have so far to go in the cold, but waves were heightening and shallow water with many rocks made this challenging. With careful manoeuvring everyone was brought into the zodiacs and returned to Hondius. A wonderful dinner awaited

us followed by some stories at the bar afterwards. Thank you to everyone, today and on other landings, who has helped us to collect some of the plastic and other rubbish that has been littering the shores of Spitsbergen.

## Day 6: 31<sup>st</sup> May 2022

### Smeerenbukta

### Ski Log

We awoke to a cloud ceiling at 250m – not great for skiing, but went and scouted a landing landed at Smeerenbukta just in case and set off towards the Hollanderberget. The flat ground before the slope itself was pretty wet, and muck boots were useful for the first few hundred meters. Once we hit the slope, we swapped these for ski boots and continued up the Hiertabreen. The weather got better and better and we summited in perfect visibility and a light north easterly.

We then skied down the Annabreen – more amazing spring snow, then reascended to the summit before skiing the Hiertabreen down to the shore. However, the day's adventures were not over. We had had landed in a fairly calm sea state, but now it was quite choppy. It took some great efforts from Eduardo and Claudio in the Zodiacs to get us off shore and back to Hondius. There were some wet feet among both guests and guides alike but everyone got safely back on board. Well done everyone!



## Day 7: 1st June, 2022

### St Johnsfiorden

GPS position at 1200: 79°46.1' N, 010°57.5' E  
Wind: E4 Sea State: Slight Weather: Overcast  
Air Temp: +6.5°C Sea Temp: +6.8°C



Our final full day around Svalbard started with everyone being shuttled to shore by zodiac before splitting up into various groups. The skiers were planning to be out all day and the rest of us set off to undertake different routes, distance and gradients to suit our individual needs and abilities. Near to the landing site we were able to visit an old tracker's hut that is still usable. Unsurprisingly basic inside, nonetheless it could provide adequate protection to preserve life. Those of us who were feeling energetic hiked upwards through the tranquil fiord with beautiful surroundings. This was a little bit different from our first few days in the north because there was much less snow around. Due to this fact we had a different landscape to walk on with many more plants and flowers growing which was very interesting to see. We also observed many beautiful and different types of rocks. The trail ended at a high point where

we could see a glacier coming down in a frozen sea filled with pack ice. An incredible hike filled with a sense of adventure and exploration. The wildlife encounters of all the various groups racked up a number of good species including **Bearded Seal, Reindeer, Arctic Terns, Arctic Skuas, Pink-foot Goose** and chattering groups of **Purple Sandpiper**. But the bird that stole the show was the **Rock Ptarmigan**, still resplendent in its stunning white winter plumage. They were high up on the slopes but could be picked out fairly easily with binoculars but the hikers who went up into their territory really got the best seats in the house for their efforts! All the walks converged on the landing site - to start the trip back directly back to Hondius or take part in the (infamous) 'Polar Plunge'. About 20 hardy souls in their swim suits braved a chilly dip into arctic waters accompanied by shrill screams and gasps of surprise.



After a warming lunch the zodiacs were launched for a final cruise around to view the Gaffelbreen Glacier, front on, that we had seen on the walks that morning. The whole bay was blocked by an ice sheet where several **Bearded Seals** were seen lying out, with two in open water diving under the ice sheet to feed. We then cruised towards the massive glacier at the end of St. Johns fjorden, again blocked by ice. And then the final delightful surprise: a zodiac full of hotel and expedition staff armed with hot chocolate, cream and rum! Back on Hondius we gathered for a final time to join the Captain's farewell party with cocktails and to view Expedition Photographer Juan's superb slideshow. This was made available to all afterwards to be copied and taken home as a unique memento of an incredible expedition trip.

## Day 7: 1<sup>st</sup> June 2022

### Bullbreen

### Ski Log

On arriving in St John's Fjord, we scouted and found that the intended landing sites on the north shore were iced in. We transferred to the south shore and found an excellent landing spot near Bullbreen.

Returning with the guests, we skinned up the west summit of Holmlesletfjella. The views were stupendous from its top at 692m. The snow on the way down was pretty sticky after the first 300m, and we were very happy to arrive at the shore and see a harbour seal checking us out while we waited for the zodiacs back to Hondius. The floating bar of hot chocolate with rum was an amazing way to round off the week. Thanks everyone for a great week of skiing!

**Day 8: 2<sup>nd</sup> June 2022**

## **Longyearbyen - Disembarkation**

**GPS position at 1200: 78°14.0' N, 015°37.2' E**

**Wind: NW2 Sea State: Calm Weather: Partly Cloudy**

**Air Temp: +8°C Sea Temp: +5.2°C**

After seven fantastic days and nights on our Arctic adventure, a final wake-up call was made at 7:00am by Expedition Leader Eduardo. With luggage outside cabins ready for collection it was time for our last breakfast on board M/V Hondius. After that everyone had one final exhilarating ride in the zodiacs to get back to Longyearbyen before saying farewell to our ship and crew;



the trip was over but the memories made will surely last a lifetime!

**Thank you all for travelling with us on this voyage; for your enthusiasm, support and good company. We very much hope to see you again in the future, wherever that might be!**

**Total distance sailed on our voyage: 659.5 nautical miles**

**Furthest North: 80°09.709' N, 12°46.452' E**

**On behalf of Oceanwide Expeditions, Captain Artur Iakovlev, Expedition Leader Eduardo Rubio Herrera, Hotel Manager William Barnes and all the crew and staff of M/V Hondius, it has been a pleasure travelling with you.**





1. Longyearbyen
2. Lillehöökreen
3. Tønsneset
4. Ny-Ålesund
5. Magdalenefjorden
6. Gullybuykta
7. Gravneset
8. Adamsteinen
9. Fuglefjorden
10. Sallyhamna
11. Pack ice
12. Scheibukta
13. Brattekleivbreen
14. Gjøaneset
15. Smeerenbukta
16. Virgohamna&Smeerenburg
17. St. Jonsfjorden
18. Bullbreen
19. Longyearbyen

<b>Birds &amp; Mammals of Svalbard</b>								
<b>English Name</b>	<b>Latin</b>	<b>26th May</b>	<b>27th May</b>	<b>28th May</b>	<b>29th May</b>	<b>30th May</b>	<b>31st May</b>	<b>1st June</b>
Red-throated diver	<i>Gavia stellata</i>		x				x	x
Northern Fulmar	<i>Fulmarus glacialis</i>	x	x	x	x	x	x	x
Bean Goose	<i>Anser fabalis</i>							x
Pink-footed Goose	<i>Anser brachyrhynchus</i>		x	x			x	x
Barnacle Goose	<i>Branta leucopsis</i>		x	x	x		x	x
Pale-bellied Brent Goose	<i>Branta hrota</i>						x	x
Brent Goose	<i>Branta bernicla</i>						x	
Common Eider	<i>Somateria mollissima</i>	x	x	x	x	x	x	x
King Eider	<i>Somateria spectabilis</i>		x				x	x
Rock Ptarmigan	<i>Lagopus mutus hyperboreus</i>	x	x					x
Ringed Plover	<i>Charadrius hiaticula</i>		x					
Purple Sandpiper	<i>Calidris maritima</i>		x					x
Common Redshank	<i>Tringa totanus</i>		x					
Arctic Skua	<i>Stercorarius parasiticus</i>				x		x	x
Long-tailed Skua	<i>Stercorarius longicaudus</i>							
Great Skua	<i>Stercorarius skua</i>							x
Glaucous Gull	<i>Larus hyperboreus</i>	x	x	x	x	x	x	x
Kittiwake	<i>Rissa tridactyla</i>	x	x	x	x	x	x	x
Ross' Gull	<i>Rhodostethia rosea</i>				x			
Arctic Tern	<i>Sterna paradisaea</i>		x	x				x
Brunnich's Guillemot	<i>Uria lomvia</i>							x
Black Guillemot ssp mandtii	<i>Cephus grylle mandtii</i>	x	x	x	x	x	x	x
Little Auk	<i>Alle alle</i>		x	x	x	x		
Puffin	<i>Fratercula arctica</i>			x	x	x	x	
Snow Bunting	<i>Plectrophenax nivalis</i>	x	x	x			x	x
<b>MAMMALS</b>		<b>26-05</b>	<b>27-05</b>	<b>28-5</b>	<b>29-5</b>	<b>30-5</b>	<b>31-5</b>	<b>1-jun</b>
Common /Harbour seal	<i>Phoca vitulina</i>			x	x		x	
Minke Whale	<i>Balaenoptera acutorostrata</i>	x			x			
walrus	<i>odobenus rosmarus</i>		x	x			x	
Blue Whale	<i>Balaenopentera musculus</i>	x						
bearded seal			x		x			x
harp seal	<i>Pagohilus groenlandicus</i>		x					
Polar Bear	<i>Ursus maritimus</i>			x	x	x		
Spitsbergen Reindeer	<i>Rangifer tarandus platyrhynchus</i>		x					x

---

# Eduardo Rubio - Expedition Leader

---



I describe myself as an astronomer by profession with a passion for sharing nature with others.

After studying physics, I got my PhD in Astronomy from the University of Amsterdam in 2010. After a postdoctoral position I became a lecturer of physics and Astronomy as well as a guide in expedition cruise ships. In 2018 I decided to become a full-time guide for Oceanwide Expeditions in the Antarctic and in the Arctic.

My interests vary from history of exploration to the intricacies of astronomy. During the trips I have undertaken, I offer lectures about polar explorers, the science carried out in Antarctica (astronomy in particular), about our Universe, and the mysteries of our ocean's depths, to mention some. At sea, besides being an engaged guide and lecturer, I love to show constellations to people, pointing out their names and their lore. In every trip I made, I always aim to raise the enthusiasm of guests towards science, and their awareness towards the unique and fragile planet where we live. Born in Guatemala (1978), I speak English, Spanish and German.

---

# Sara Jenner – Assistant Expedition Leader

---



For as long as Sara could remember she has had a passion for travel and searching for the wildest and most remote places on earth.

Back in the UK when she was only 10, she remembers trading in her favourite pink bicycle for the money to start her travel fund. Every birthday and Christmas she added a little more in the kitty and finally, at 18 she realised her dream of diving at the Great Barrier Reef! At that point the travel addiction was born. Ever since Sara has been travelling the globe in search of wild and remote places and has spent many

months volunteering on wildlife conservation projects in a bid to help some of our most iconic and endangered species.

Sara's love of wildlife and the great outdoors has taken her to all seven continents and she has travelled extensively in the polar regions including the Antarctic Peninsula, Falklands, South Georgia, Spitsbergen, Greenland, Iceland, Baffin Island and Canadian High Arctic. Returning to the UK, Sara used this knowledge to work in the travel industry as a polar specialist for several years, until the travel bug hit again, when she decided to swap life on the land for a life at sea and joined the Oceanwide Expedition Team in 2016.

During 2020-2021 she worked extensively on a leopard seal identification project and took the opportunity to fulfil a lifetime dream of visiting South Georgia in winter by working on the M/V Pharos, which is deployed by the South Georgia Government as a fishery patrol vessel.

Sara is a keen wildlife photographer and when she is not wrapped up warm in the polar regions she enjoys working as a photographic guide in Botswana, on the beautiful Chobe River and Okavango Delta, so really has a life of two halves.

---

# George Kennedy – Assistant Expedition Leader

---



George is an anthropologist and political scientist currently studying at the Australian Institute of Marine and Antarctic Science. He has a keen interest in cultural identity and contemporary geopolitics in the polar regions. His current research focusses on the complex dynamics between indigenous, scientific and political stakeholders in their pursuit of environmental protection in Antarctica and the Arctic.

In his practice as an anthropologist, George has worked predominantly with community development organisations in Latin America. His work has focussed on identifying collaborative solutions to support environmental conservation and sustainable tourism in Patagonia and the Amazon basin.

Prior to his work in anthropology, George served as a paramedic in Australia, still occasionally throwing on the uniform to work with Ambulance Victoria in Melbourne.

Second only to expedition cruising, George's great passion is motorcycle travel. He has ridden from Mongolia to India, around Australia, and most recently from Patagonia to Mexico on his Kawasaki KLR650.

---

# Meike Sjoer - Expedition Guide

---



From early on Meike has been a passionate naturalist and traveller who just loves birds.

At the age of 7 she bought her first bird book. Being outdoors all the time, she wanted to learn more about the amazing creatures she encountered. Investigating and learning about nature and wildlife has been a passion ever since.

Meike has a master degree in film and television from the University of Utrecht. For the last 25 years she has been working as a television director. Her stories involve nature, wildlife and environmental topics. If not travelling, she is directing the prime-time wildlife television program Vroege Vogels.

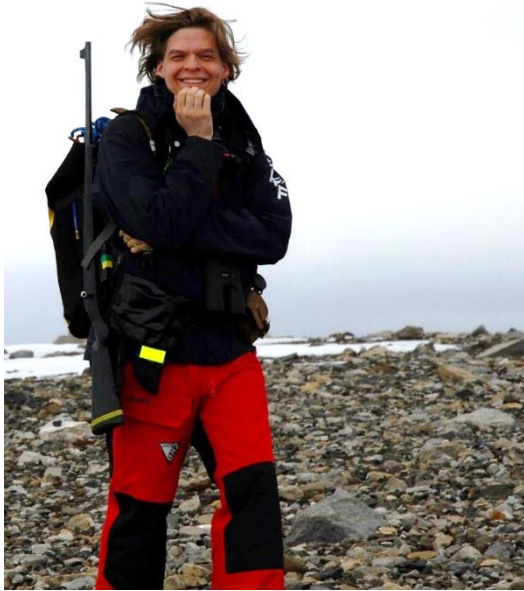
When time permits, she volunteers as a nature guide for the Dutch institute for nature and education. As a teenager Meike started sailing the oceans but her true love for the life in the oceans began 14 years ago when she started working with Sea Shepherd on the mediateam.

Meike is thrilled to be your guide on this trip and looking forward to sharing knowledge and the passion for this magical polar world with you.

---

# Szymon Niezabitowski - Expedition Guide

---



Szymon was born in Cracow, Poland. He studied Biology and Geography in Cracow where he received his graduate degree in “Faculty of Biology and Earth Sciences”. His final thesis was about Volcanic Soils on Iceland.

After he finished his studies, he joined Polish Academy of Sciences and worked for the Institute of Systematics and Evolution of Animals, where he was a guide and researcher on exotic animals.

Szymon began guiding in the Arctic in 2016 on Spitsbergen and since then has also led Orca whale trips in North Norway.

From the earliest years of his life he is a passionate naturalist with a special interest in the geography and the wildlife of the higher latitudes.

---

# Claudio Ghiglione - Expedition Guide

---



Claudio was born in Italy in 1983. He is a marine ecologist specialised in polar regions, expedition guide and nature photographer.

Interested in science and nature since he was very young, he graduated first in *Marine Environmental Sciences* (BA) and then in *Marine Science* (MA). In March 2017 he obtained a *PhD in Earth, Environmental and Polar Sciences* run in cooperation with the Italian National Antarctic Museum (Italy) and the British Antarctic Survey in Cambridge (UK).

For several years he worked as a polar researcher focusing his work mainly on the South Pole (Antarctica); his objective is to analyse and evaluate information used for ecological modelling and possible future scenarios following global warming. During his academic career, he actively takes part in some scientific expeditions both in Arctic and in Antarctica in cooperation with Norway and England.

His passion for travel, mainly to cold and often inhospitable places, and his career as a photographer led him to travel a lot, creating and managing – often in complete autonomy – itineraries and logistics. In 2017 – thanks to his professional experience, the skills acquired over the time and the need to spend more time on the field – he starts working full time as a guide Oceanwide.

Specialised in nature, scientific and travel photography, Claudio uses his photos as a means of telling stories to draw attention mainly to his main subjects, namely animals, nature and environment. In the 2019 he published his first book 'Polar Lights' with whom he shares the passion for nature photography.



---

# Hazel Pittwood - Expedition Guide

---



Hazel grew up in the county of Dorset on the South coast of the UK. A childhood spent pond dipping, bug hunting and exploring the countryside and coast nurtured her love of the natural world.

She has worked in practical conservation and community engagement roles for a variety of habitats, including heathland and coastal nature reserves. Hazel also has experience surveying rare protected species and is a trained wildlife rescue volunteer and marine mammal medic

Whilst she is broadly learned about the natural world, Hazel has specialised in marine mammals and seabirds since 2014. At that time she began volunteering as a marine mammal and seabird surveyor, collecting sightings data regarding these animals for UK based conservation charities. In 2017 she worked on a passenger ship travelling between the UK and Spain across the Bay of Biscay for six months, delivering talks and leading wildlife watching sessions out on deck.

Hazel has been working as a guide and lecturer on cruise ships for over three years. This role has taken her to Norway and Svalbard, Iceland, Alaska, Canada, the Faroe Islands, the Canary Islands, the Caribbean and Central America. She is a World Cetacean Alliance certified responsible whale watching guide, championing the highest standards of wildlife experiences.

The polar regions host an incredible diversity of seabird and marine mammal species and Hazel looks forward enhancing your encounters with these incredible animals with her knowledge, skills and enthusiasm.

---

# Koen Jongerling - Expedition Guide

---



Having grown up in the Netherlands Koen always knew he wanted to live in a more rugged landscape than the rather flat lowlands that surrounded him. That is why after finishing his outdoor education in 2011, he chose to move to Patagonia, Chile to find the mountains he was longing for.

Combining his love for nature and the desire to learn more, he started guiding expeditions through the mountain ranges of Patagonia. Travelling back and forth to Europe for additional mountain courses - every time feeling more at home in the rough conditions of Patagonia. In 2017 he started his own guide company, introducing travelers to the beauty of Southern Chile.

Living in Puerto Natales he came to love the cold and extreme weather and after years of working in one of the most southern mountain ranges in the world, he could not stop looking further south to the great white continent, Antarctica.

---

# Miriam Vermeij – Expedition Guide

---



During her youth she travelled a lot with her parents and sister in Europe. Miriam developed an interest in nature at a young age and lots of time was spent outdoor, exploring local insects and plants. Following her interests, she followed an environmental science study and got a degree with a specialisation on soil pollution. Nowadays she is a self-employed environmental planning officer.

From 1999 the travelling outside Europe started and after a trip to South America, the Falklands and Antarctica in 2006 she got the passion for the poles. The first contact with the Arctic was in 2011 and after another trip in 2013 she came back as field assistant on the Dutch polar expedition (SEES) in 2015 and to the Dutch polar station in Ny Alesund in 2016. Since 2017 she has been guiding in the Arctic, followed by the Antarctic in 2018.

In Holland Miriam is a nature guide since 2003. First in the local forest and since 2008 also in one of the largest national parks in Holland: De Biesbosch. There she is guiding school kids and adult groups on walking and boating trips. She is also part of the board that manages the local forest.

---

# Andrew Crowder – Expedition Guide

---



Andrew is an experienced naturalist with a life long history of observation, study and sheer enjoyment of wildlife. His interest in natural history started as a young boy watching birds and they remain his first passion. Focusing mainly on Western Palearctic species, he has travelled extensively and accrued a wealth of knowledge. As part of that journey of discovery, he has also developed self-taught skills in wildlife photography.

Andrew has always been drawn to the sea and is a CMAS Class 2/BSAC qualified Advanced Scuba Diver; he has had the privilege of experiencing incredible marine life which few others get to see. Time spent exploring the underwater world helped spawn his other main interest: cetaceans. Andrew has over twenty years of experience with these amazing animals, undertaking scientific surveys and guiding on cruise ships in UK, European and Polar waters.

Andrew recognises that few wildlife encounters spark such an emotional reaction in humans as when they see whales and dolphins. He uses his knowledge and enthusiasm to help more people share such inspirational experiences and thereby promote the conservation of our precious natural world.

---

# Laura Mony – Expedition Guide

---



The ocean had always been part of Laura's life. She started spending time on sailboats when she was a baby and she sailed around the world crossing several oceans when she was between 12 and 14 years old.

That trip increased her passion for the ocean because she discovered its vastness and its importance on the earth's dynamic. Laura had the chance to start traveling very young and has been all over the world alone, with a backpack, with family or friends. These trips gave her the opportunity to develop an open mind and an intellectual

curiosity about the climate phenomena that govern our planet.

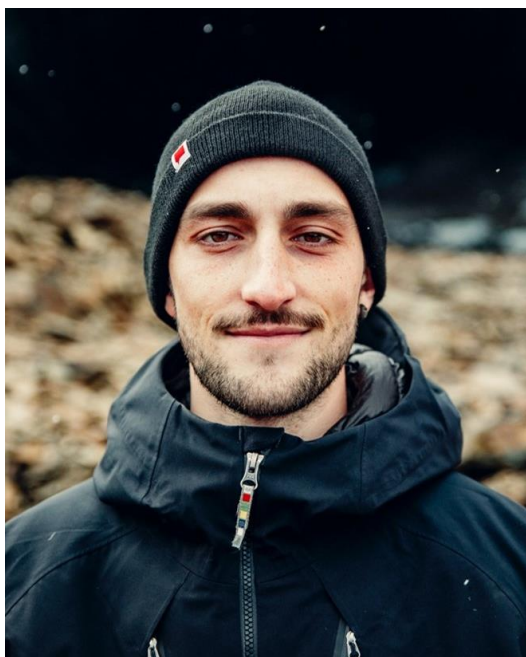
Born in France, she grew up in the French part of Canada where she did her bachelor's degree in Geological Engineering.

During her bachelor's degree, she became fascinated by the polar regions and wanted to continue her studies in that field. That is why, at the end of her degree, she left Canada for Tasmania, Australia, to do her master's in marine and Antarctic Science. During that degree she deeply studied this fascinating continent with a specialization in geophysics.

---

# Juan Berenstein – Expedition Guide

---



Juan is a professional photographer and drone pilot born in Ushuaia, Argentina. He is embarking on his first Antarctic Expedition Cruise with Oceanwide Expeditions.

He is a young and highly motivated person, who loves enjoying outdoors and on the mountains. His hobbies are trekking, camping, FPV drone flying and photography.

His passion for nature started at an early age with his family, who enjoyed the weekends camping at the end of the world and travelling around the country

on holidays. Nowadays he enjoys discovering new landscapes around the end of the Andes chain with his friends.

He studied photography in Buenos Aires and decided to return to his hometown to start his career and develop an independent way of life.

Juan has been working in tourism for more than 5 years in Ushuaia and has amazing skills related to guest management, being a sociable and talkative person. He speaks natively Spanish, English and some German as he did an exchange back in 2014 after finishing high school.

Going to Antarctica has been a lifetime dream of his, as being born at the southernmost city in the world and the nearest city to the white continent really set the path for the years to come. He plans on starting a Polar career learning from every aspect, from wildlife to history, and someday become an Expedition expert.

---

# Massimo Candolini - Ski Guide

---



I have been climbing mountains since I was young, doing activities in the Alps, especially in the winter, such as winter ascents, icefalls, ski touring, freeride, and steep ski.

In 2001, I left my job of programming computers/electronics and I attended the Italian Mountain Guide National Course. I was qualified in 2003 and ever since have been working as a professional Mountain Guide.

In 2010 I founded the Mont - Mountain Guiding, Mountaineering School and Adventure Travels company, which focuses on climbing in the Alps (rock climbing, ski touring, high mountain), consultancy (Natural Parks Organizations, Snow and Avalanche Office Forecast, via Ferrata building and maintenance), publishing (I wrote several ski touring and rock climbing guide books) and adventure expeditions organization (Nepal, Perú, Bolivia, Norway, Greenland, Alaska, Spitzbergen, Peninsula Antarctica, Russia, Kyrgyzstan and others).

Having skied all the continents and summited several mountains, I chose the extreme north and the white slopes as my mountaineering home. In 2015 I started to work on board of Rembrandt Van Rijn in Greenland and Spitzbergen. I continue to travel searching to push my skis over untouched snow trying to calm my desire of adventure into a natural, wild and savage environments. I am definitively convinced, my favourite mountain is the next one!

---

# Andy Perkins – Ski Guide

---



Andy Perkins is an IFMGA mountain guide living in Chamonix at the foot of Mont Blanc, western Europe's highest mountain. He has been climbing and skiing since he was a teenager and has worked as a qualified mountain guide for over twenty years.

His "normal" work is as a guide in the European Alps. In the summer he guides climbing and mountaineering clients from all over the world. In winter he works with off piste skiers in and around lift-served ski resorts and by using ski touring equipment to access more remote spots. It's in that capacity

that he discovered the magical combination of mountains and ocean, initially through ski sail trips in Arctic Norway. He has pursued that fabulous formula with trips to Iceland and Greenland over recent years.

Here are three highlights from his mountain experience:

- 17 days on Cerro Kishtwar's north face in the Indian Himalaya . Intensity of experience is his goal in personal climbing, and this one had it in spades.
- 2 rescues on Denali, the second of which earned him the Denali Pro Award and an Award for Bravery from the US Department of the Interior.
- Skiing in Arctic Norway with his wife Lise, 60 years after his dad was pioneering there in the 1950's. Mountains run in the family!

He speaks fluent English and French and basic German and Italian.

His aim as a guide is to share his love of the wild places of the world and to maximise his clients' potential - to exceed their expectations of what they're capable of. This often means taking on new skills as well as sharpening existing ones. The big grins when someone finally "gets it", whether skiing or climbing, makes his job as a guide a real joy.



---

# George Hirn - Expedition Guide

---



Since he was walking five kilometres from kindergarten, alone, home to pick up his left snack box, Georg is inspired of doing outdoor activities.

Following to that he found the way into the Austrian Armed Forces as a non-commissioned officer in an airborne and mountaineering unit.

After quitting the service he was educated to, and therefore, he worked as such a sport physiotherapist for several years.

In 2002 longing for the wide world he has started with international tour guiding. Up to now he lives his passion and globetrot with people about 10 months per year in different countries like Ecuador, Greece, Myanmar, Portugal, Scotland, Spain....as well as in the Artic region:

Firstly conducting a lot of trekking on the highlands of Iceland, amongst others, he took part in a travel and outdoor TV-production as guide and presenter.

For nearly 12 years he joins the Inuit hunters in Greenland and going on trekking with groups along the East and Westcoast true to the motto having phenomenal experiences in unbelievable dimensions of nature and Artic life.

Shaped by this he has also been bringing all of his knowledge to bear in testing and developing outdoor equipment for a German manufacturer.

Since 2016 the Rembrandt van Rijn has been for him a cosy base for hiking and snowshoeing in Greenland, Northern Norway and Svalbard, whether under the northern lights or the midnight sun - the Rembrandt trips always open up wonderful experiences and time far north – for his guests and himself!!

---

# Arne Mosch – Ship's doctor

---



Arne was born in Rotterdam and studied Internal Medicine and Neurology at the medical school at Leiden University.

He worked as a Neurologist and Clinical Neurophysiologist until December 2021, mostly teaching in the hospital in the Hague, Netherlands.

Before the global pandemic he was lucky enough to work as a ships doctor in Antarctica where he first found his love of the polar regions.

During 2020/21 he worked in the Dutch Covid vaccination programme, whilst also giving lectures about Neurology/Clinical neurophysiology.

In his free time, he enjoys heading to the mountains to do hiking, rock climbing and tour skiing. When he is not on overseas holidays he fills any remaining time he might have with reading about modern history, doing jobs around his house, making leather bags and of course spending quality time with his children.



**North Spitsbergen  
Arctic Spring- Hiking Special  
Welcome aboard M/V Hondius!**

**26<sup>th</sup> May 2022  
Day 1 – Embarkation, Longyearbyen**

Please make yourselves at home in your cabins and check you have received all your luggage!

Tea/coffee is available in the lounge located on Deck 5.  
**PLEASE LISTEN FOR ANNOUNCEMENTS**

- 17:30 Ship safety briefing, in the Observation Lounge on Deck 5. Attendance to this is **MANDATORY**.
- After the briefing the emergency alarm will be sounded, and you will need to go back to your cabin and get your life jacket.
- All guests accommodated on Deck 3 (Cabins 301-337) will go to MUSTER STATION A which is the Restaurant on Deck 4  
All guests accommodated on decks 4, 6, and 7 (Cabins 401-414, 601-619, 701-714) will go to MUSTER STATION B which is the Observation Lounge on Deck 5.
- 18:15 +/- The Hotel Manager and Expedition Leader will do a Welcome Briefing, to orientate you to life on board and the plan for the forthcoming days.  
This will take place in the Observation Lounge on Deck 5.
- Please listen for announcements for exact timings as they will be determined by our departure time.
- 19:00 Buffet dinner in the restaurant on Deck 4.
- 20:30 We would like to invite you to the lounge for AECO safety briefing and staff introductions. Attendance to this is **MANDATORY** and will be checked.

*“It is not the mountain we conquer, but ourselves” -Edmund Hillary*



**North Spitsbergen  
Arctic Spring- Hiking Special  
Welcome aboard M/V Hondius!**

**27<sup>th</sup> May 2022  
Day 2 – Lilliehookbreen and Ny Alund**

07:00 Wake- up call  
07:30-8:30 Breakfast buffet in the Restaurant, Deck 4.

During the course of the morning, we will sail into Lilliehookbreen so we encourage you to spend time on the outside decks looking for wildlife and enjoying the views of this magnificent glacier.

08:30 -09:30 There will be a **mandatory** briefing for all those guests signed up for the skiing program in the shell doors on Deck 3 with Massimo and Andy the ski guides.

10:00 A **mandatory** zodiac and safety briefing will take place in the Observation Lounge on Deck 5. Attendance will be checked.

10:45 Muck Boot Distribution. Please listen for announcements, as you will be called deck by deck to Deck 3. Please bring your thick socks to find the best-sized boots for you!

11:30 A briefing for all guests to discuss plans for Ny Alund.

12:00-13:00 A buffet lunch will be served in the Restaurant, Deck 4.

13:00 Please could the skiers be ready at the shell Door on Deck 3 to go ashore by zodiac.

14:30 We hope to disembark you at Ny Alusund via the gangway on Deck 4, but please listen to announcements before approaching the gangway.

The shop will be open until 17:00 and accepts most credit cards. If you wish to have your passport stamped with a souvenir stamp, please take it ashore with you.

18:30 Join the Expedition Staff in the Lounge for our daily recap and Captain's Cocktails.

19:30 Dinner is served in the Restaurant on Deck 4.

21:00 A briefing for the skiers to discuss plans for the following day in the Lecture Room.

*"Imagination is more important than knowledge. Knowledge is limited. Imagination encircles the world." -Albert Einstein*



# OCEANWIDE

EXPEDITIONS

## North Spitsbergen Arctic Spring- Hiking Special *Welcome aboard M/V Hondius!*

**28<sup>th</sup> May 2022**  
***Day 3 – Magadalenefjorden***

- 07:00 Wake- up call
- 07:30-8:30 Breakfast buffet in the Restaurant, Deck 4. For those doing the long hike or skiing please make a pack lunch to take with you during breakfast.
- 08:45 For those guests wanting to go ashore at Gullybukta please be ready at the aft shell door on Deck 3. You will do a zodiac cruise during the course of the morning.
- 09:00 Please could the skiers be ready at the front shell Door on Deck 3 to go ashore.
- 09:00 Please could the hikers be ready at the aft shell Door on Deck 3 to go ashore.
- 12:00-13:00 A buffet lunch will be served in the Restaurant, Deck 4.
- 13:30 For those guests on board please be ready at the aft shell door for a zodiac cruise of Gravnesodden, which will be followed by a landing.
- During the afternoon the hikers and skiers will be picked up and returned to the ship.
- 18:15 Join the Expedition Staff in the Lounge for our daily recap.
- 19:00 Dinner is served in the Restaurant on Deck 4.
- 21:00 A briefing for the skiers to discuss plans for the following day in the Lecture Room.

*“Mystery creates wonder and wonder is the basis of man's desire to understand...” -Neil Armstrong*



**North Spitsbergen  
Arctic Spring- Hiking Special  
*Welcome aboard M/V Hondius!***

**29<sup>th</sup> May 2022  
Day 4 – Fugleholmane and Sallyhamna**

- 07:00 Wake - up call
- 07:30-08:30 Breakfast buffet in the Restaurant, Deck 4.
- 09:00 All guests please be ready at the shell doors on Deck 3 for a zodiac cruise at Fugleholmane.
- 12:30-13:30 A buffet lunch will be served in the Restaurant, Deck 4.
- 14:00 For those guests wishing to do the long hike at Sallyhamna please be ready at the shell doors.
- 14:15 For all other guests wishing to go ashore at Sallyhamna please be ready at the shell doors.
- 19:00 Join the expedition staff in the Lounge for our daily recap.
- 19:30 Dinner is served in the Restaurant on Deck 4.
- 21:00 A briefing for the skiers to discuss plans for the following day in the Lecture Room.

*"The land looks like a fairytale." —Roald Amundsen (1872—1928) about Antarctica.*



**North Spitsbergen  
Arctic Spring- Hiking Special  
Welcome aboard M/V Hondius!**

**30<sup>th</sup> May 2022**

**Day 5 – Pack Ice, 80 Degrees North and Danskeneset**

We hope to reach the ice edge during the night, so please join the expedition team on the outside decks and help look for wildlife.

- 07:30 Wake-up call
- 08:00-09:00 Breakfast buffet in the Restaurant, Deck 4.
- 11:30 Szymon welcomes you to his lecture about Sea Ice in the lounge.
- 12:30-13:30 A buffet lunch will be served in the Restaurant, Deck 4.
- 14:00 Please join the expedition team for daily recap and hear plans for tomorrow in the lounge.
- 16:00+/- Please can the long hikers be ready at the shell doors to go ashore at Danskeneset.
- 16:15 Please could all other guests be ready at the shell doors to go ashore at Danskeneset.

**All times are subject to change, please listen to announcements.**

We hope to be able to offer a skiing program, subject to weather conditions, your ski guides will keep you informed during the afternoon.

- 19:30 Dinner is served in the Restaurant on Deck 4.

*"The English have loudly and openly told the world that ski and dogs are unusable in these regions and that fur clothes are rubbish. We will see — we will see." — Roald Amundsen (1872-1928).*



# OCEANWIDE

EXPEDITIONS

## North Spitsbergen Arctic Spring- Hiking Special *Welcome aboard M/V Hondius!*

**1<sup>st</sup> June 2022**  
***Day 7 – St Johns fjorden***

07:00 Wake-up call

07:30-08:30 Breakfast buffet in the Restaurant, Deck 4.

09:00 Long hikers to be ready at the shell doors for a landing at St Johns fjorden.

09:15 Short and medium hikers to be ready at the shell doors for a landing at St Johns fjorden.

We hope to offer a Polar Plunge this morning. If you would like to take an Arctic dip, please wear your swimmers under your expedition clothes. We will provide the towels. This will be at the end of the afternoon's activities.

09:45 Skiers to be ready at the front shell door.

12:30-13:30 A buffet lunch will be served in the Restaurant, Deck 4.

14:30 Please be ready at the shell doors for a zodiac cruise of St Johns fjorden.

18:15 Join the expedition staff in the lounge for the Captains Farewell Cocktail and a viewing of the voyage slideshow.

19:00 Dinner is served in the Restaurant on Deck 4.

*"Superhuman effort isn't worth a damn unless it achieves results." — Ernest Shackleton.*





# OCEANWIDE

EXPEDITIONS

## North Spitsbergen Arctic Spring- Hiking Special *Welcome aboard M/V Hondius!*

**1<sup>st</sup> June 2022**  
***Day 7 – St Johns fjorden***

07:00 Wake-up call

07:30-08:30 Breakfast buffet in the Restaurant, Deck 4.

09:00 Long hikers to be ready at the shell doors for a landing at St Johns fjorden.

09:15 Short and medium hikers to be ready at the shell doors for a landing at St Johns fjorden.

We hope to offer a Polar Plunge this morning. If you would like to take an Arctic dip, please wear your swimmers under your expedition clothes. We will provide the towels. This will be at the end of the morning's activities.

09:45 Skiers to be ready at the front shell door.

12:30-13:30 A buffet lunch will be served in the Restaurant, Deck 4.

14:30 Please be ready at the shell doors for a zodiac cruise of St Johns fjorden.

18:15 Join the expedition staff in the lounge for the Captains Farewell Cocktail and a viewing of the voyage slideshow.

19:00 Dinner is served in the Restaurant on Deck 4.

*"Superhuman effort isn't worth a damn unless it achieves results." — Ernest Shackleton.*



# OCEANWIDE

EXPEDITIONS

## **North Spitsbergen** **Arctic Spring- Hiking Special** ***Welcome aboard M/V Hondius!***

**2<sup>nd</sup> June 2022**  
***Day 7 – Disembarkation, Longyearbyen***

- 07:00 Wake-up call
- 07:15 Please leave your large luggage in the corridor outside your room for the staff to collect. Crew and staff will bring it to the pier, where you will need to personally identify it and bring it your bus.
- 07:30-08:30 A breakfast buffet is served in the Restaurant on Deck 4.
- 08:30-09:00 Please be ready at the shell doors for a zodiac transfer to the pier.
- 09:00 Buses will be departing from the quayside to Longyearbyen city centre.

Thank you all for a wonderful voyage, for your company, good humour, and enthusiasm. We hope to see you again in the future and share more adventures with you.