



**OCEANWIDE**  
EXPEDITIONS

**North Spitsbergen**  
**In search of the Polar Bear & Pack Ice – Summer Solstice, Arc  
of Meridian**  
**M/V Hondius**  
**16th June 2022 – 23rd June 2022**



The MV Hondius was built in 2019 in Brodosplit, Croatia, as an expedition vessel for Oceanwide Expeditions. Hondius is 107.60m long, 17,60m wide and has a maximum draught of 5.3m and has an exceptionally high Ice class of PC6, a top speed of 15 knots and 3 diesel generators. The Hondius sails on LSMGO. Now the ship is sailing as a 176-passenger vessel with 83 cabins. Our beautiful, modern ship carries 369m<sup>3</sup> of fresh water and has a water plant producing 70m<sup>3</sup> per day. Hondius is the perfect vessel for a true polar adventure!

# **Captain Artur Iakovlev**

**and his international crew of 72 including:**

Chief Officer:	<b>Mathe Mocanu</b>
Staff Officer:	<b>Elizbar Kadaria</b>
Second Officer:	<b>Kirill Buriachek</b>
Second Officer:	<b>Sven Holzhausen</b>
Third Officer:	<b>Don Buren</b>
Chief Engineer:	<b>Florian Cretu</b>
Hotel Manager:	<b>William Barnes</b>
Assist. Hotel Manager:	<b>Andrius Juodvirsis</b>
Head Chef:	<b>Ralf Barthel</b>
Sous Chefs:	<b>Milos Simeunovic</b> <b>Mihai Melinte</b>
Ship's Physician:	<b>Ineke Mol</b>
Expedition Leader:	<b>Florence Kuyper</b>
Assist. Expedition Leaders:	<b>Sara Jenner</b> <b>George Kennedy</b>
Expedition Guides:	<b>Eduardo Rubio-Herrera</b> <b>Hazel Pittwood</b> <b>Szymon Niezabitowski</b> <b>Cas Eikenaar</b> <b>Andrew Crowder</b> <b>Laura Mony</b> <b>Claudio Ghiglione</b> <b>Guillermina Brown</b> <b>Julia Angemeier</b> <b>Mikhail Barabanov</b> <b>Georgina strange</b>

**We welcome you on board!**

# Day 1: 16th June 2022

## Embarkation, Longyearbyen

GPS position at 1200: 78°13.7' N, 015°56.2' E

Wind: NW 2 Sea State: Port Weather: Overcast/rain

Air Temp: +9°C Sea Temp: +7.2°C



With Hondius anchored in the fjord off the port in Longyearbyen, we began our adventure in fine expedition style with an exciting zodiac shuttle for guests and their luggage. Many guests explained they had been due to make this trip a couple of years ago, but unfortunately due to the covid pandemic it had to be rescheduled. So, you can imagine the excitement everyone was feeling to be finally starting this expedition after a long wait! Most of the luggage was already aboard when everyone donned a lifejacket and stepped carefully into the zodiac to be smoothly

driven across the water and enter Hondius through the shell doors for the first time (but by no means the last!). After registering at reception we made our way to our cabins to settle in.

Happily aboard and reunited with our luggage, Expedition Leader (EL) Florence and Chief Officer Matei commenced the mandatory ship safety briefing at 17:30pm, during which guests were shown how to put on life jackets and floatation suits, stored in cabins in the event of an emergency situation. As part of the briefing an abandon ship alarm was sounded - we all made our way to our muster stations, either in the Observation Lounge (station B) or Restaurant (station A). Once all guests had arrived wearing their lifejackets correctly, we proceeded to the lifeboat boarding area on deck 6. We were directed to our lifeboats and given further information by Second Officer Kirill Buriachek and Third Officer Don Buren, who would be the masters of these vessels in the (very unlikely) event of us having to use them. Afterwards, at 18:15pm, guests received a warm welcome and orientation briefing from our Hotel Manager William and EL Florence – an overview of life on board and how to access important information concerning our daily schedules.

After a wonderful buffet dinner prepared by the galley staff it was time for the third and final briefing of the evening, a video presentation from AECO (the Association of Arctic Expedition Cruise Operators) which informs visitors about correct behaviour towards the environment, people and wildlife of the Arctic. Finally, after a long day of travel and lots of important information many of us headed to bed to be well rested for our first full day of expedition tomorrow.

## Day 2: 17th June 2022

### Lilliehöökreen and Ny-London

GPS position at 1200: 79° 06.6' N, 011°29.5' E

Wind: S4 Sea State: Slight Weather: Overcast/rain

Air Temp: +5°C Sea Temp: +6.2°C

And so began our first full day aboard the ship! We awoke to a slight drizzle to have a lovely breakfast, which did not however in any way diminish the beauty of the Lilliehöökreen Glacier, where we leisurely cruised throughout the morning. Despite the over 40% loss it has experienced over the last two decades, it remains a sight to behold. Over 8 km wide and much higher than our vessel, we stood outside and took in the sheer enormity and beautiful light blue coloration of this massive pack of ice, sculpted by time. Pieces of this glacier could be seen around our ship in various sizes drifting off towards the open ocean, destined to disappear over time. In terms of wildlife, we were able to witness **Brünnich's Guillemots** and **Northern Fulmars** flying around the ship, as well as groups of **Common Eider** ducks on shore,



flocks of **Little Auks** and our first pair of **Puffins**! After muck boots were distributed to all passengers, we suddenly made a small detour due to a **Polar Bear** sighting! Seen by AEL George and a few other people it unfortunately disappeared over a ridge. We stopped and scanned but to no avail, so we moved on to our next destination. During the transfer, the rest of the mandatory briefings were held so everyone was equally well informed on arctic behaviour and safety.

During lunch Hondius relocated to the Kongsfjord to undertake the first landing of the cruise at Ny London, a reminder of a failed marble enterprise undertaken by the British shoemaker Ernest

Mansfield. As our scouting zodiacs approached the shore, Andrew, on the bridge, briefly spotted a **Polar Bear** right next to the planned landing site; from his zodiac George was then able to confirm the sighting. Flexibility being a part of the adventure, the planned landing was immediately cancelled and a Plan B to launch all zodiacs was started to observe the bear from the water. The zodiacs were able to follow the bear as it walked above the shoreline before settling down for a nap, although not before startling a few **Reindeer**. We drove back to the bay of Ny London to look at the remains of the marble mine from the safety of the zodiac. Two beautiful **Long-tailed Duck** males were vying for the attentions of a female and a **Long-tailed Skua** could be closely approached, scenically posed looking into the distance whilst perched atop piece of ice. This species has only been observed nesting in this area, the only place in Spitsbergen! With calm winds, beautiful cloud formations and even the occasional patch of blue sky, we contentedly returned to the ship to enjoy the rest of the day in warmth and comfort. Not bad for our first full day in the arctic!



## Day 3: 18th June 2022

### Indre Norskoya, Smeerenburg and Virgohamna

GPS position at 1200: 79°52.8' N, 11°11.4' E

Wind: Variable 1 Sea State: Calm Weather: P.cloudy/sun

Air Temp: +8°C Sea Temp: +5.6°C

We woke up under a bright sunshine, blue sky and to Flo's voice wishing us a good morning and telling us that we should get up as soon as possible because there was a female **Polar Bear** feeding on the nearby shoreline of Indre Norskoya, along with her two cubs. They were eating blubber, probably from a dead whale – it made for a delicious meal for this bear family, even if it looks like it has been there for more than a year!



So right after breakfast we were called to Deck 3 to jump into the zodiacs for a cruise. We went straight to those charismatic creatures who had finished eating and were slowly making their way away from the water but stayed close enough for us to have a good view. As they disappeared behind a ridge for a snooze we started a cruise around the island. **Little Auks** were seen flying to their nests with predatory **Glaucous Gulls** lurking around. A **Walrus** was swimming around and **Common Eider** were hanging out on the shallow rocks. The sun was shining, the light was beautiful

and the sharp black peaks of the mountains gave us the chance to create artistic shots. Heading back to the ship we stopped to admire a growler (a small iceberg) showing its varied blue tints.

Over lunch we arrived to Smeerenburg, a Dutch name which means 'blubber town'- an area full of history. Around the 1630's, some 200 persons lived on this little piece of land to work for the lucrative (but oh, so dangerous!) whaling. Seven Dutch companies were based there and we could still see the remains of the blubber ovens and whale bones on the beach.

On the other side of the landing site, we spent a nice time admiring the **Walrus** haul out. These giant beasts were playing in the water and were surprisingly active for such big animals that usually prefer to just sleep on the beach. For the



zodiac cruising we went to see some **Harbour Seals**, that were adopting their classic 'banana' shape sitting out on the rocks. We then cruised by the site of the hot air balloon expedition of Saloman Andrée which started in

Virgohamna in 1897. He had this magical dream to reach the North Pole by flying but the adventure went horribly wrong from the beginning and later, during recap, George's explained they were often high on morphine. Sadly, they failed and died on the way but it showed their drive to realise the dream of being the first people to reach the North Pole was stronger than anything else.

## Day 4: 19<sup>th</sup> June 2022

### Grahuken and Monacobreen

GPS position at 1200: 79° 47.3' N, 014° 23.5' E  
Wind: ENE 4 Sea State: Calm Weather: Overcast  
Air Temp: +5°C Sea Temp: +6.2°C

This morning's activities began with Guide Georgina giving a lecture about photography shortly after breakfast. Having arrived at our morning destination of Grahuken, it was then time to go ashore. After scouting from land, sea and the bridge of Hondius to make sure there were no polar bears in the vicinity of our landing site, the Expedition Team assembled and began shuttling guests ashore via the zodiacs. The first guests on shore were the 'fast, fit and furious' hikers who set off at pace and enjoyed a three-hour ramble into the wilderness of the Arctic tundra. The rest of the guests then came ashore and ventured between Expedition Team staff positioned around the shore area. There was plenty to explore, from the trapper's hut (made famous by Christine Ritter from her memoir 'A Woman in the Polar Night') to Eduardo's sextant activity to Andrew's birdwatching. Plants were still awakening from winter's grasp on the areas free from snow and ice with the first few tiny buds of spring



flowers visible. Mosses and lichens, of a wide variety of colours, dominated the rocky ground. The hikers returned to the landing site (leaving us in awe by showing photos of a narwhal skull they had spotted) just before 12 noon, at which time

some brave guests took the opportunity to take a swim in the Arctic Ocean by doing the Polar Plunge!



After lunch Mikhail gave a lecture called 'Arctic Awhaleability' discussing the past, present and future of cetaceans (whales and dolphins) in the Arctic. We were then in the vicinity of the beautiful glacier of Monacobreen and it was time to go zodiac cruising! Named after Prince Albert I of Monaco (in honour of expeditions he organised to explore and map the area in the early 1900's), Monacobreen is one of the most photogenic parts of the Svalbard

archipelago. Initially our view was obstructed by thick fog but, thankfully, just after we started cruising it began to clear. In addition to travelling the length of this stunning wall of ice we enjoyed icebergs which had calved from it; we were in awe of the colours and shapes, incredible ice sculptures carved by nature's forces. In the evening's recap Guide Laura described surging glaciers (Monacobreen is this type of glacier) followed by Guide Cas who helped us to identify some of the bird species we had seen today. These included **Snow Bunting**, **Black Guillemot** and **Brünnich's Guillemot**, **Arctic Skua** and **Black-legged Kittiwake**. Expedition Leader Flo rounded things off by giving us the plan for tomorrow: a day in the sea ice! This was a long-awaited day for many guests and there was much excitement in the Observation Lounge after this plan had been revealed. After recap yet more cause for joy followed; tonight's dinner would be a BBQ! We all made our way outside onto deck 5 aft to enjoy a delicious variety of food surrounded by the incredible scenery of Svalbard's snowy mountains. After eating the tables were cleared and it was time to dance and sing the night away. To top off the evening three separate **Minke Whales** were seen! These 10m long whales were evidently feeding as they repeatedly surfaced a few times, breaking the mirror calm waters, before disappearing back into the depths. What a great end to the day!

## Day 5: 20<sup>th</sup> June 2022

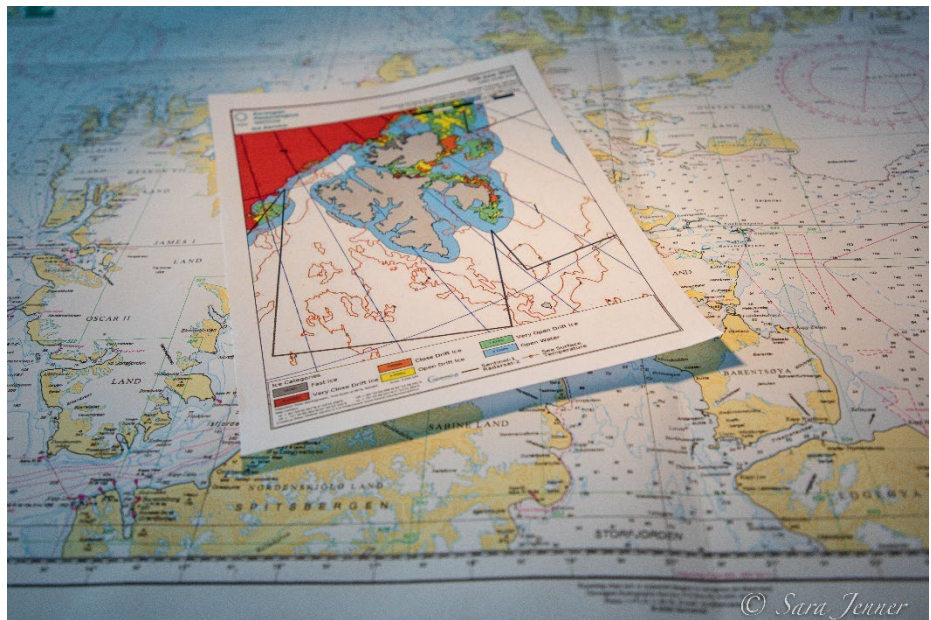
### Sea Ice

**GPS position at 7:30AM: 80°35.29N, 11°23.41E**

**Wind: E5 Sea State: Ice Weather: Overcast**

**Air Temp: +3°C Sea Temp: +1.5°C**

Today we aim for our farthest northern destination - the pack ice! The edge of the ice lies at 80°35.29N, 11°23.41E, which we reach at 7:30AM. Time for the wake-up call, although quite a few of the guests are already on deck or in the lounge to get their first sight of the vast expanse of ice spreading out in front of the Hondius, all the way to the North Pole. While we are enjoying breakfast the ship slowly moves forward into the pack ice, gently pushing aside large sheets of up to 1-meter-thick ice. When nudging particularly large sheets vibrations run through the Hondius combined with the sound of thunder, revealing the impact of the ice on the hull. Around 9:30AM the ice is so dense that the captain has to reduce speed to 1 knot. Even though we are in what looks like a white desert there are still birds to be seen.



**Kittiwakes** and **Northern Fulmars** accompany the ship. Interestingly, a few of the fulmars are of the 'light' morph (grey wings, all white below – similar to the colouration of gulls). This colour morph is not common this far north, where the 'dark' or 'blue' phase usually predominate. Both **Brünnich's** and **Black Guillemots** also fly past every now and again. While all guides and some guests search for the prize of the day, - the polar bear - others enjoy one of the many lectures on the programme today. Sara started off with her brilliant presentation on Polar Bears and Eduardo bent our minds (as well as space and time!!) with his talk on Einstein, Navigation & GPS. Later in the morning the wind picked up, bringing a real Arctic chill to the outside decks. Time for lunch!



During the whole day the guide team kept a watch on the bridge but, despite all the hours of effort, no polar bears were sighted. We begin to realise how lucky we were with the encounters earlier in the cruise. Later, Laura gave a suitably relevant talk on Sea Ice, whilst outside the increasing wind caused the ice floes to close. Captain Artur, an experienced ice navigator, decided that the risk of becoming stuck was increasing and ordered a retreat to open water. Inside Hazel gave a great lecture on Pinnipeds (Seals, Sea Lions & Walrus) and left us with the haunting sound of the Bearded Seal. The ship started heading south and, after recap, we started heading for dinner.

## Day 6: 21st June 2022

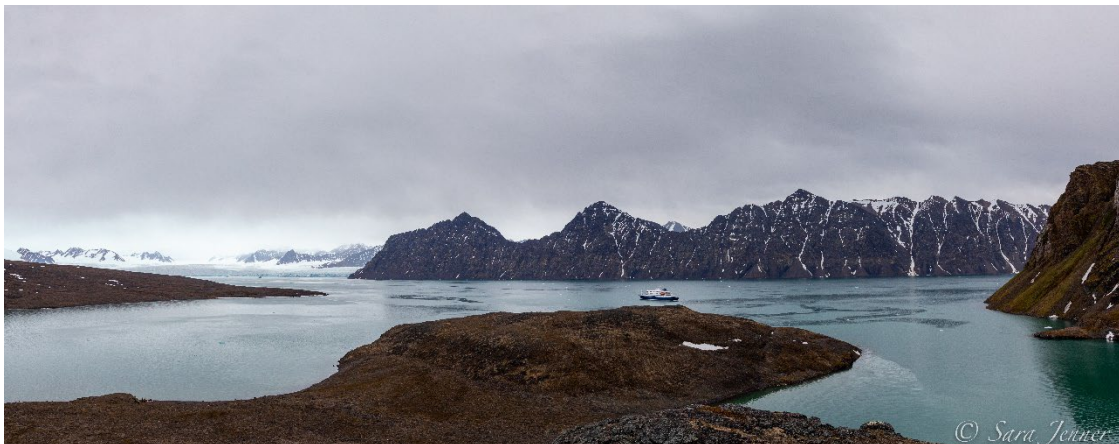
### Signehamna and Ny Alesund

GPS position at 1200: 79°16.3' N, 011°34.5' E

Wind: ESE5 Sea State: Calm Weather: Overcast

Air Temp: +10°C Sea Temp: +6.6°C

We woke up under greyish skies but to a warmer temperature and yet another beautiful landscape. With this atmospheric weather and the high peaks covered with colourful mosses, we got excited about the morning. This was a split landing starting with a lecture on board given by Claudio who talked about climate change and where the world is going. For the other half of the group, we started with a landing in a beautiful little inlet of Signehamna. Green patches of moss, orange



lichen and tiny **Purple Saxifraga** covered the landing site. The **Snow Buntings** were showing off all around and **Purple Sandpiper** were almost at our feet, totally absorbed in feeding themselves up for the breeding season. First stop on our hike was

magnificent viewpoint where we could see the Lilliehookbreen glacier (our first stop on Day 2) and look down on Hondius, anchored in the fjord, with the craggy mountains behind. That was followed by a visit to the old German weather station and some historical remains of that era. Eduardo explained the history illustrating it by pointing our remains on the ground, including jerrycans, barrels, glass, crockery, etc and other remains we could see on ground. Onto the next viewpoint with the wonderful vista of the freshwater lake and the nesting area of **Red-throated Diver**, before turning back to the landing site and a return to Hondius.





As we were having lunch, we could see the sea building up and the wind was gusting at up to 40 knots. That was not a good sign... and as we reassessed the situation closer to Ny Alesund it became clear that the wind would remain above safe operational limits. We kept going deeper in the fjord hoping to find more shelter to make a landing but the wind was too strong and Flo decided to cancel, for safety reasons. As an alternative we got an amazing lecture by Cas about the migration of birds and how they manage to make these incredible journeys to get to their summer breeding grounds from their

wintering areas and back again. This was followed by a ship's cruise and William announcing a happy hour - Whouhou!!! - always a good way to lighten the mood. We also had an extended recap with tomorrow's plan, Szymon's talk on the origin of Hondius' name, Eduardo's about the summer solstice and Hazel on narwal. The recap ended with the opportunity to ask any questions of the whole staff. Again, a delicious dinner was served by our lovely hotel team and we finished the day watching the dramatic spray coming over the bow from the safety of the lounge - maybe with a glass of our favorite drink.

## Day 7: 22nd June 2022

### Skansbukta and Ymerbukta

**GPS position at 1200: 78°25.8' N, 015°45.6' E**  
**Wind: SE 2 Sea State: Slight Weather: Part Cloudy**  
**Air Temp: +8°C Sea Temp: +7.8°C**

Today the location of our morning activities was Skansbukta, named after the nearby mountain Skansen (a Norwegian word for 'sloping' which refers to the shape of the wide plateau that tops the mountain). This fantastic location is full of interest and despite it being quite windy the sun was shining which was very welcome! The first group of passengers went ashore to enjoy the variety of features to be explored. This was a particularly lovely site for plants and guests with a botanical interest were thrilled to see a wide variety; **Mountain Avens,**



**Arctic Bell Heather, Tufted Saxifrage, Drooping Saxifrage, Snow Saxifrage, Ellesmerel, Woolly Lousewort, Hairy Lousewort, Pale Whitlow-grass, Sulphur Buttercup, Hawkweed-leaved Saxifrage, Northern Golden Saxifrage, Mountain Sorrel** were all observed. Two very obliging **Svalbard Reindeer**, complete with velvet covered antlers, were lying down resting giving great photo opportunities. A twisted, rusting railway remains of mining operations for gypsum which ran from 1918 – 1930's by the Dalen Portland Cement Works, and a small, wrecked ship were items of historical significance. Additionally, there was a trapper's hut, built in the early 1900's but well maintained and still in use by locals today. The towering mountains surrounding the landing area were host to large numbers of nesting seabirds, mostly **Northern Fulmars**. Zodiac cruisers enjoyed travelling along the cliffs with these birds flying overhead and were delighted by numerous **Atlantic Puffins** which were on the water. Guests on the second zodiac cruise had spectacular views of two **Arctic Foxes!** These nimble little mammals were running across the mountainside, hunting for food and stopping to chase and play with each other.

After our last delicious lunch of the expedition it was time for our afternoon excursions, a split landing/zodiac cruise, this time at Ymerbukta. With the towering cliffs of Alkehornet looming in the distance Hondius halted, zodiacs were launched and operations began. Ashore, guests were able to have the unforgettable experience of touching the Esmarkbreen glacier at its terminal moraine. Having seen so many stunning glaciers from the water, both from Hondius and from zodiacs, it was truly awe-inspiring to have this up-close encounter with this gigantic frozen river of ice. During the zodiac cruises everyone took a moment to sit in silence and absorb the sounds of the Arctic one last time, from the scratchy calls of Arctic terns to the creaking of the glacier and rushing meltwater. Alongside the sounds of the Arctic, we



we were treated to a fantastic view of a **Bearded Seal** hauled out resting on the ice! There were many 'awws' at this beautiful animal as guests viewed it snoozing peacefully. Also, **King Eider** duck were seen to the delight of the birders. What a terrific end to our last full day of the trip! Back on board we were treated to the fabulous end of trip photo slideshow created by Photography Guide Georgina whilst sipping prosecco and hearing a

final farewell from our Captain, Artur Iakovlev and thanked the Expedition Team. At our last evening meal we gave thanks to all of the staff, from bar to galley and housekeeping to hotel, acknowledging all of the people who had worked to deliver our incredible expedition cruise experience. Sad to be leaving but happy to have had this once in a lifetime trip, we headed to our cabins to pack our bags.

## Day 8: 23rd June 2022

### Longyearbyen - Disembarkation

GPS position at 1200: 78°14.0' N, 015°37.4' E

Wind: E5 Sea State: Port Weather: Overcast

Air Temp: +5°C Sea Temp: +6°C

And so, the curtain comes down on our amazing arctic expedition. After our final wake-up call by Expedition Leader Flo it was time for our last breakfast on board M/V Hondius. Guests were transported ashore in Longyearbyen by zodiacs (one last little cruise!). The friendly Expedition Team said farewell and off everyone went with big smiles and memories to treasure forever!



Thank you all for travelling with us on this voyage; for your enthusiasm, support and good company. We very much hope to see you again in the future, wherever that might be!

Total distance sailed on our voyage: 837.8 nautical miles

Furthest North: 80°39.228' N, 11°30.478' E

On behalf of Oceanwide Expeditions, Captain Artur Iakovlev,  
Expedition Leader Florence Kuyper, Hotel Manager William Barnes

**and all the crew and staff of M/V Hondius, it has been a pleasure travelling with you.**

---

# Florence Kuyper - Expedition Leader

---



Florence is a cosmopolitan with a passion for the polar regions, remote nature, deserts, history and nomadic people around the globe. After receiving her Masters degree in Educational and Organisational Psychology in the Netherlands, Florence had a European career as a consultant-manager in the field of social affairs.

In 2004 she went for the first time to the big white desert 'Antarctica' and her passion for this continent has drawn her back 'South' ever since.

But Florence can also do extreme heat: she crossed 1,200 km of harsh Mongolian desert on foot, together with a team and her Bactrian camel. Florence lived on a British historical base on the Antarctic Peninsula "Port Lockroy" where she worked as Base Leader. She also works on sailing yachts in the Arctic and Antarctica. Florence has worked as a guide and expedition leader in both polar regions since 2012 and she looks forward to sharing her knowledge and unlimited passion for the polar regions with you.

---

# Sara Jenner – Assistant Expedition Leader

---



For as long as Sara could remember she has had a passion for travel and searching for the wildest and most remote places on earth.

Back in the UK when she was only 10, she remembers trading in her favourite pink bicycle for the money to start her travel fund. Every birthday and Christmas she added a little more in the kitty and finally, at 18 she realised her dream of diving at the Great Barrier Reef! At that point the travel addiction was born. Ever since Sara has been travelling the globe in search of wild and remote places and has spent many

months volunteering on wildlife conservation projects in a bid to help some of our most iconic and endangered species.

Sara's love of wildlife and the great outdoors has taken her to all seven continents and she has travelled extensively in the polar regions including the Antarctic Peninsula, Falklands, South Georgia, Spitsbergen, Greenland, Iceland, Baffin Island and Canadian High Arctic. Returning to the UK, Sara used this knowledge to work in the travel industry as a polar specialist for several years, until the travel bug hit again, when she decided to swap life on the land for a life at sea and joined the Oceanwide Expedition Team in 2016.

During 2020-2021 she worked extensively on a leopard seal identification project and took the opportunity to fulfil a lifetime dream of visiting South Georgia in winter by working on the M/V Pharos, which is deployed by the South Georgia Government as a fishery patrol vessel.

Sara is a keen wildlife photographer and when she is not wrapped up warm in the polar regions she enjoys working as a photographic guide in Botswana, on the beautiful Chobe River and Okavango Delta, so really has a life of two halves.

---

# George Kennedy – Assistant Expedition Leader

---



George is an anthropologist and political scientist currently studying at the Australian Institute of Marine and Antarctic Science. He has a keen interest in cultural identity and contemporary geopolitics in the polar regions. His current research focusses on the complex dynamics between indigenous, scientific and political stakeholders in their pursuit of environmental protection in Antarctica and the Arctic.

In his practice as an anthropologist, George has worked predominantly with community development organisations in Latin America. His work has focussed on identifying collaborative solutions to support environmental conservation and sustainable tourism in Patagonia and the Amazon basin.

Prior to his work in anthropology, George served as a paramedic in Australia, still occasionally throwing on the uniform to work with Ambulance Victoria in Melbourne.

Second only to expedition cruising, George's great passion is motorcycle travel. He has ridden from Mongolia to India, around Australia, and most recently from Patagonia to Mexico on his Kawasaki KLR650.

---

# Eduardo Rubio – Expedition Guide

---



Eduardo describes himself as an astronomer by profession with a passion for sharing nature with others.

After studying physics, he got his PhD in Astronomy from the University of Amsterdam in 2010. After a postdoctoral position he became a lecturer of physics and Astronomy as well as a guide in expedition cruise ships. In 2018 he decided to become a full-time guide for Oceanwide Expeditions in the Antarctic and in the Arctic.

His interests vary from history of exploration to the intricacies of astronomy. During the trips he has undertaken, he offer lectures about polar explorers, the science carried out in Antarctica (astronomy in particular), about our Universe, and the mysteries of our ocean's depths, to mention some. At sea, besides being and engaged guide and lecturer, he loves to show constellations to people, pointing out their names and their lore. In every trip he made, he always aim to raise the enthusiasm of guests towards science, and their awareness towards the unique and fragile planet where we live. Born in Guatemala (1978), he speaks English, Spanish and German.



---

# Hazel Pittwood - Expedition Guide

---



Hazel grew up in the county of Dorset on the South coast of the UK. A childhood spent pond dipping, bug hunting and exploring the countryside and coast nurtured her love of the natural world.

She has worked in practical conservation and community engagement roles for a variety of habitats, including heathland and coastal nature reserves. Hazel also has experience surveying rare protected species and is a trained wildlife rescue volunteer and marine mammal medic

Whilst she is broadly learned about the natural world, Hazel has specialised in marine mammals and seabirds since 2014. At that time she began volunteering as a marine mammal and seabird surveyor, collecting sightings data regarding these animals for UK based conservation charities. In 2017 she worked on a passenger ship travelling between the UK and Spain across the Bay of Biscay for six months, delivering talks and leading wildlife watching sessions out on deck.

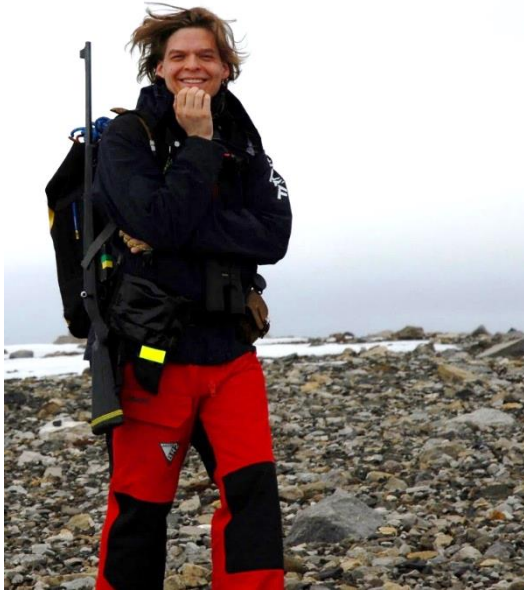
Hazel has been working as a guide and lecturer on cruise ships for over three years. This role has taken her to Norway and Svalbard, Iceland, Alaska, Canada, the Faroe Islands, the Canary Islands, the Caribbean and Central America. She is a World Cetacean Alliance certified responsible whale watching guide, championing the highest standards of wildlife experiences.

The polar regions host an incredible diversity of seabird and marine mammal species and Hazel looks forward enhancing your encounters with these incredible animals with her knowledge, skills and enthusiasm.

---

# Szymon Niezabitowski - Expedition Guide

---



Szymon was born in Cracow, Poland. He studied Biology and Geography in Cracow where he received his graduate degree in “Faculty of Biology and Earth Sciences”. His final thesis was about Volcanic Soils on Iceland.

After he finished his studies, he joined Polish Academy of Sciences and worked for the Institute of Systematics and Evolution of Animals, where he was a guide and researcher on exotic animals.

Szymon began guiding in the Arctic in 2016 on Spitsbergen and since then has also led Orca whale trips in North Norway.

From the earliest years of his life he is a passionate naturalist with a special interest in the geography and the wildlife of the higher latitudes.

---

# Cas Eikenaar - Expedition guide

---



Cas is a behavioural ecologist with a special interest in birds. He grew up in a small village in the Netherlands, and when six years old already knew that he wanted to become an ornithologist. After studying biology, he travelled the world for more than 20 years to research birds in their natural habitats. Some of these projects took him to the Seychelles, the Galapagos, Australia and the Ecuadorian Andes. He often spent months sharing small uninhabited islands with the enchanting animals and plants living there. Such experiences, he says, fuelled his deep fascination with nature.

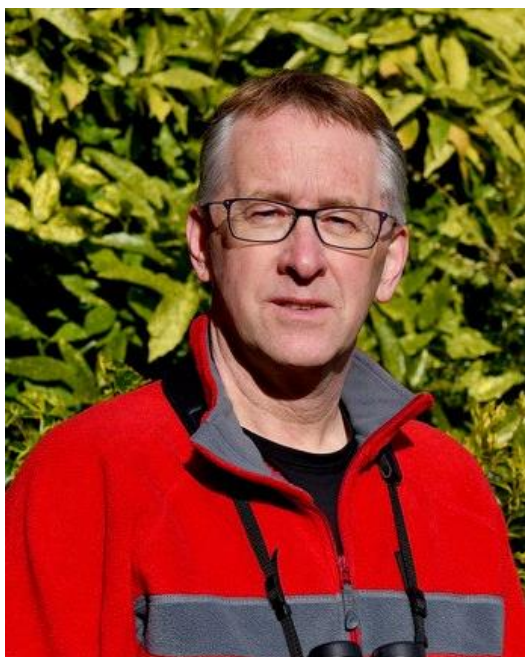
Cas currently works at the Institute of Avian Research "Vogelwarte Helgoland" in Wilhelmshaven (Germany), where he studies the relationship between physiology and behaviour in migratory birds. Besides his professional connection to birds, he is an avid birder, sporting a pair of binoculars ever since he was a kid. Birds, however, are by no means the only organisms that draw his attention. Cas is simply deeply passionate about all the living world around us, and has a keen interest in (and eye for) all forms of wildlife.

Cas is Dutch by birth, but also speaks fluent English and German. He would love to share his passion for nature with everyone on board. In doing so, Cas would not only like to help you identify the birds and other animals, but also tell you about their behaviour, ecology and evolution. He is convinced that this will make you appreciate the wonderful nature you encounter during the expeditions with Oceanwide even more.

---

## Andrew Crowder - Expedition Guide

---



Andrew is an experienced naturalist with a lifelong history of observation, study and sheer enjoyment of wildlife. His interest in natural history started as a young boy watching birds and they remain his first passion. Focusing mainly on UK and European species, he has travelled extensively and accrued a wealth of knowledge. As part of that journey of discovery, he has also developed self-taught skills in wildlife photography.

Andrew has always been drawn to the sea and is a CMAS Class 2/BSAC qualified Advanced Scuba Diver; he has had the privilege of experiencing incredible marine life which few others get to see. Time spent exploring the underwater world helped spawn his other main interest: cetaceans. Andrew has over twenty years of experience with these animals, including undertaking scientific surveys and guiding on cruise ships in the Arctic and UK waters.

Andrew recognizes that few wildlife encounters spark such an emotional reaction in humans as when they see whales and dolphins. He uses his knowledge and enthusiasm to help more people share such inspirational experiences and thereby promote the conservation of our precious natural world.

---

# Laura Mony – Expedition Guide

---



The ocean had always been part of Laura's life. She started spending time on sailboats when she was a baby and she sailed around the world crossing several oceans when she was between 12 and 14 years old. That trip increased her passion for the ocean because she discovered its vastness and its importance on the earth's dynamic.

Laura had the chance to start traveling very young and has been all over the world alone, with a backpack, with family or friends. These trips gave her the opportunity to develop an open mind and an intellectual curiosity about the

climate phenomena that govern our planet.

Born in France, she grew up in the French part of Canada where she did her bachelor's degree in Geological Engineering. During her bachelor's degree, she became fascinated by the polar regions and wanted to continue her studies in that field. That is why, at the end of her degree, she left Canada for Tasmania, Australia, to do her Master in Marine and Antarctic Science. During that degree she deeply studied this fascinating continent with a specialization in geophysics and glaciology. When she is not guiding, she explores the world with her camera, or she is discovering the backcountry of Quebec with her skis. She likes to discover remote area and meet with local populations.

---

# Claudio Ghiglione - Expedition Guide

---



Claudio was born in Italy in 1983. He is a marine ecologist specialised in polar regions, expedition guide and nature photographer.

Interested in science and nature since he was very young, he graduated first in *Marine Environmental Sciences* (BA) and then in *Marine Science* (MA). In March 2017 he obtained a *PhD in Earth, Environmental and Polar Sciences* run in cooperation with the Italian National Antarctic Museum (Italy) and the British Antarctic Survey in Cambridge (UK).

For several years he worked as a polar researcher focusing his work mainly on the South Pole (Antarctica); his objective is to analyse and evaluate information used for ecological modelling and possible future scenarios following global warming. During his academic career, he actively takes part in some scientific expeditions both in Arctic and in Antarctica in cooperation with Norway and England.

His passion for travel, mainly to cold and often inhospitable places, and his career as a photographer led him to travel a lot, creating and managing – often in complete autonomy – itineraries and logistics. In 2017 – thanks to his professional experience, the skills acquired over the time and the need to spend more time on the field – he starts working full time as a guide Oceanwide.

Specialised in nature, scientific and travel photography, Claudio uses his photos as a means of telling stories to draw attention mainly to his main subjects, namely animals, nature and environment. In the 2019 he published his first book 'Polar Lights' with whom he shares the passion for nature photography.

---

# Guillermina Browne – Expedition Guide

---



Guillermina was born and raised in Ushuaia, Tierra del Fuego. Guillermina has always had a passion for the outdoors. In her free-time she likes to go cycling, trekking, snowboarding and slack-lining.

She has been teaching winter sports in both Argentina and in Europe.

Her love of the snow and ice made her career goal to specialize in winter activities in Argentina and Europe. Guillermina has now set her sights on the Great White Continent – Antarctica!

She is excited to bring her experience as an expedition guide and zodiac driver in the Beagle Channel to Oceanwide Expeditions guests Antarctica and Arctica.

In addition to her guiding, Guillermina has a strong love of marine wildlife and is looking advance her knowledge of the marine life of the polar regions.

---

# Julia Angermeier - Expedition Guide

---



Julia was born Germany in a small village outside of Frankfurt and she has always had a love of the outdoors. She started her career as an Intensive Care Nurse, a profession she continues today in her off time.

The majority of her time, however, is now spent in Puerto Natales (Chile) where she works as a trekking guide in Torres Del Paine, one of the most beautiful parts of the world. Julia's passion is connecting people with nature, and showing them the beauty around them. Getting people away from

computers and social media and giving them a life changing experience.

Julia looks forward to sharing these amazing adventures with her guests on every trip.



---

# Mikhail Barabanov – Expedition Guide

---



Born in St Petersburg, Russia, but raised in Luxemburg, Mikhail now lives in Switzerland, where he delights in camping all over the local mountainscape.

He spent quite some time in the academic world, obtaining master's degrees in Marine Mammal Science and in Ecology and Nature Conservation. After working for several field seasons as a scientist in distant places on marine mammals and birds, he was keen to pursue a way to combine his passion for travelling, outreach and the higher latitudes.

His deep interest for the polar regions was formed on a visit to Antarctica with Oceanwide in 2018 as part of a university course. At the time, he was stunned by the pristineness and the vibrance of life found in the Southern Ocean and wanted to find a way to return in a professional capacity. As he prefers the world's colder regions, Oceanwide provided the opportunity to immerse himself in the polar world.

No stranger to adverse weather and difficult living conditions, Mikhail is always looking to find places and moments that exude true calm and serenity. As an avid photographer and videographer, he is always seen carrying his gear around from place to place, trying to improve his craft and capture wildlife in their natural behaviour.

Usually in high spirits, he works as a guide on a variety of expeditions, on which he can be found always ready to help and looking to increase his savoir-faire in all things ocean and wildlife.

---

# Georgina Strange - Expedition Guide

---



Georgina is a professional nature photographer and general wildlife enthusiast from the Falkland Islands. Her rather unique upbringing on a very small and remote island nature reserve has instilled a deep passion for wild places, and you'll most likely find her out on a cliff edge in a storm, revelling in the gales of wind that frequent the Falklands!

Georgina studied in England for sixth-form college, followed by an adventure to Australia for her university degree in Photography.

After managing her family's conservation trust on New Island in the Falklands for many years, regularly working with the many visiting expedition ships shoreside, Georgina swapped a land-based life for an ocean-based one and started as expedition photographer to South Georgia and the Antarctic in 2017, and to the Arctic in 2019, often switching roles to work as the on-board ornithologist to share her love of the winged creatures of the world, too!

During her off-ship season, Georgina runs her own wildlife photography tours at home to fulfil her passion for making captivating images of nature. Whenever possible, she most enjoys balancing out the time spent guiding in cold and windy places for quality time in the hotter and sunnier climes of the world!

Georgina's photography has made it to Outdoor Photographer of the Year, Bird Photographer of the Year, Wild Art Photographer and the finals of the prestigious Wildlife Photographer of the Year, as well as several well-known nature photography magazines and smaller competitions. Always happy to share knowledge and techniques, maybe you will go home with some competition-worthy images of your special trip, too!

---

## Ineke Mol – Ship's doctor

---



Ineke Mol is an experienced Dutch GP. She worked well over 30 years in a deprived urban area in the city of Almere. Just recently she provided medical care as a volunteer doctor in the Lesbos refugee camp.

Over the past 15 years, she has enjoyed practicing medicine as a ship's doctor on expeditions to Greenland and Antarctica. Her passion is long distance skating. She takes to the ice once canals and lakes are frozen over. When temperatures are milder, Ineke enjoys sculpting.

She has a son and a daughter, and five grandchildren. Ineke speaks Dutch and English.

Feel free to talk to Ineke when you have health issues on board. She will work together with you for the best outcome. Besides, you are always welcome for a friendly chat.

- 1. Longyearbyen (06/16)
- 2. Lillehöökreen (06/17)
- 3. Ny-London (06/17)
- 4. Indre Norskoya (06/18)
- 5. Smeerenburg (06/18)
- 6. Virgohamna (06/18)
- 7. Grahuken (06/19)
- 8. Monacobreen (06/19)
- 9. Into the pack Ice (06/20)
- 10. Signehamna (06/21)
- 11. Skansbukta (06/22)
- 12. Ymerbukta (06/22)
- 13. Longyearbyen (06/23)



**Birds and Mammals of Svalbard**

English Name	Latin	German	Dutch	16-jun	17-jun	18-jun	19-jun	20-jun	21-jun	22-jun
Great Northern Diver	<i>Gavia immer</i>	Eistaucher	Ijsduiker							
Red-throated diver	<i>Gavia stellata</i>	Sterntaucher	Roodkeelduiker		x	x	x		x	
Northern Fulmar	<i>Fulmarus glacialis</i>	Eissturmvogel	Noordse stormvogel	x	x	x	x	x	x	x
Bean Goose	<i>Anser fabalis</i>	Saatgans	Taigarietgans							
Pink-footed Goose	<i>Anser brachyrhynchus</i>	Kurzschnabelgans	Kleine rietgans	x	x				x	x
Barnacle Goose	<i>Branta leucopsis</i>	Weisswangengans	Brandgans	x	x	x	x		x	x
Brent Goose	<i>Branta bernicla</i>	Ringelgans	Rotgans			x				
Northern Pintail	<i>Anas acuta</i>	Spießente	Pijlstaart			x				
Common Eider	<i>Somateria mollissima</i>	Eiderente	Eidereend	x	x	x	x		x	x
King Eider	<i>Somateria spectabilis</i>	Prachteiderente	Konings eider			x	x		x	x
Long-tailed Duck	<i>Clangula hyemalis</i>	Eisente	Ilseend		x					
Rock Ptarmigan	<i>Lagopus mutus hyperboreus</i>	Alpensneehuhn	Alpensneeuwhoen							x
Ringed Plover	<i>Charadrius hiaticula</i>	Sandregenpfeifer	Bontbekplevier							
Purple Sandpiper	<i>Calidris maritima</i>	Meerstrandläufer	Paarse strandloper	x	x	x	x		x	x
Red Knot	<i>Calidris canutus</i>	Knutt	Kanoetstrandloper							
Dunlin	<i>Calidris alpina</i>	Alpenstrandläufer	Bonte strandloper							
Ruddy Turnstone	<i>Arenaria interpres</i>	Steinwälzer	Steenloper							
Grey Phalarope	<i>Phalaropus fulicarius</i>	Thorshühnchen	Rosse franjepoot							
Red-necked Phalarope	<i>Phalaropus lobatus</i>	Odinshühnchen	Grauwe franjepoot							
Pomarine Skua	<i>Stercorarius pomarinus</i>	Spatelraubmöwe	Middelste jager							
Arctic Skua	<i>Stercorarius parasiticus</i>	Schmarotzerraub-möwe	Kleine jager			x	x		x	x
Long-tailed Skua	<i>Stercorarius longicaudus</i>	Falkenraubmöwe	Kleinste jager		x					
Great Skua	<i>Stercorarius skua</i>	Skua	Grote jager			x				
Sabine's Gull	<i>Xema sabini</i>	Schwalbenmöwe	Vorkstaartmeeuw							
Common/Mew Gull	<i>Larus canus</i>	Sturmmöwe	Stormmeeuw							
Glaucous Gull	<i>Larus hyperboreus</i>	Eismöwe	Grote Burgemeester	x	x	x	x	x	x	x
Iceland gull	<i>Larus glaucooides</i>	Polarmöwe	Kleine burgemeester							
Herring Gull	<i>Larus argentatus</i>	Silbermöwe	Zilvermeeuw							
Lesser black-backed Gull	<i>Larus fuscus</i>	Heringsmöwe	Kleine mantelmeeuw			x				
Great black-backed Gull	<i>Larus marinus</i>	Mantelmöwe	Grote mantelmeeuw							
Kittiwake	<i>Rissa tridactyla</i>	Dreizehenmöwe	Drieteenmeeuw	x	x	x	x	x	x	x
Ross' Gull	<i>Rhodostethia rosea</i>	Rosenmöwe	Rossmeeuw							
Ivory Gull	<i>Pagophila eburnea</i>	Eifenbeinmöwe	Ivoormeeuw							
Arctic Tern	<i>Sterna paradisaea</i>	Küstenseeschwalbe	Noordse stern	x	x	x	x	x	x	x
Common Guillemot	<i>Uria aalge</i>	Trottelumme	Zeekoet							
Brunnich's Guillemot	<i>Uria lomvia</i>	Dickschnabellumme	Dikbekzeekoet	x	x	x	x	x	x	x
Black Guillemot	<i>Cephus grylle</i>	Grylleiste	Zwarte zeekoet	x	x	x	x	x	x	x
Little Auk	<i>Alle alle</i>	Krabbentaucher	Kleine alk	x	x	x	x	x	x	x
Puffin	<i>Fratercula arctica</i>	Papageitaucher	Papegaaiduiker			x			x	x
Snow Bunting	<i>Plectrophenax nivalis</i>	Schneeammer	Sneeuwgorst	x	x	x	x		x	x
Sanderling	<i>Calidris alba</i>		Drieteenstrandloper			x				

**MAMMALS**

English	Latin	German	Dutch	16-jun	17-jun	18-jun	19-jun	20-jun	21-jun	22-jun
Walrus	<i>Odobenus rosmarus</i>	Walross	Walrus			x				
Bearded seal	<i>Erignathus barbatus</i>	Bartrobbe	Baardrob			x				
Ringed seal	<i>Phoca hispida</i>	Ringelrobbe	Ringelrob							
Harp seal	<i>Pagophilus groenlandicus</i>	Sattelrobbe	Zadelrob							
Hooded seal	<i>Cystophora cristata</i>	Klappmütze	Klapmuts							
Common /Harbour seal	<i>Phoca vitulina</i>	Seehund	Gewone zeehond		x	x				
Minke Whale	<i>Balaenoptera acutorostrata</i>	Zwergwal	Dwergvinvis	x			x			
Sei Whale	<i>Balaenoptera borealis</i>	Seiwal	Noordse vinvis							
Blue Whale	<i>Balaenoptera musculus</i>	Blauwal	Blauwe vinvis							
Fin Whale	<i>Balaenoptera physalus</i>	Finnwal	Gewone vinvis							
Humpback Whale	<i>Megaptera novaeangliae</i>	Buckelwal	Bultrug							
Sperm Whale	<i>Physeter macrocephalus</i>	Pottwal	Potvis							
Northern Bottlenose Whale	<i>Hyperoodon ampullatus</i>	Entenwal (Dögling)	Butskop							
Orca (Killer Whale)	<i>Orcinus orca</i>	Schwertwal (Orca)	Orka							
White-beaked Dolphin	<i>Lagenorhynchus albirostris</i>	Weisschnauzendelphin	Witsnuitdolfijn							
Beluga	<i>Delphinapterus leucas</i>	Weissswal	Beloga							
Polar Bear	<i>Ursus maritimus</i>	Eisbär	Ijsbeer		x	x				
Arctic Fox	<i>Alopex lagopus</i>	Polarfuchs	Poolvos						x	x
Spitsbergen Reindeer	<i>Rangifer tarandus platyrhynchus</i>	Svalbard Renntier	Rendier	x	x	x	x		x	x



# OCEANWIDE

EXPEDITIONS

## North Spitsbergen In search of Polar Bear & Pack Ice – Summer Solstice, Arc of Meridian *Welcome aboard M/V Hondius!*

**16<sup>th</sup> June 2022**  
***Day 1 – Embarkation, Longyearbyen***

Please make yourselves at home in your cabins and check you have received all your luggage!

Tea/coffee is available in the lounge located on Deck 5.  
***PLEASE LISTEN FOR ANNOUNCEMENTS***

17:30+/-

Ship safety briefing, in the Observation Lounge on Deck 5. Attendance to this is **MANDATORY**.

After the briefing the emergency alarm will be sounded, and you will need to go back to your cabin and get your life jacket.

All guests accommodated on Deck 3 (Cabins 301-337) will go to **MUSTER STATION A which is the Restaurant on Deck 4**  
All guests accommodated on decks 4, 6, and 7 (Cabins 401-414, 601-619, 701-714) will go to **MUSTER STATION B which is the Observation Lounge on Deck 5**.

18:15+/-

The Hotel Manager and Expedition Leader will do a welcome briefing, to orientate you to life on board and the plan for the forthcoming days.  
This will take place in the Observation Lounge on Deck 5.

Please listen for announcements for exact timings as they will be determined by our departure time.

19:00

Buffet dinner in the Restaurant on Deck 4.

20:30

We would like to invite you to the Observation Lounge for the AECO safety briefing and staff introductions. Attendance to this is **MANDATORY** and will be checked.



## North Spitsbergen In search of Polar Bear & Pack Ice – Summer Solstice, Arc of Meridian

### 17<sup>th</sup> June 2022 *Day 2 – Lilliehookbreen and Ny London*

07:30 Wake- up call

08:00-9:00 Breakfast buffet in the Restaurant, Deck 4.

During the course of the morning, we will sail towards Lilliehookbreen so we encourage you to spend time on the outside decks looking for wildlife and enjoying the views of the magnificent glacier.

09:45 Muck Boot Distribution. Please listen for announcements, as you will be called deck by deck to Deck 3. Please bring your thick socks to find the best-sized boots for you!

10:45 A **mandatory** Zodiac and Polar Bear Safety briefing will take place in the Observation Lounge on Deck 5. Attendance will be checked. This will be followed by a briefing for the afternoons landing at Ny London.

11:45 Georgina would like to invite you to the lounge for a presentation about Photography in the Arctic.

12:30-13:30 Buffet lunch will be served in the Restaurant on Deck 4.

14:00 Please can the **Blue** Group be ready at the shell doors on Deck 3 for a landing at Ny London.

14:30 Please can the **Red** Group be ready at the shell doors on Deck 3 for a zodiac cruise of Kongsfjorden.

Groups will swap during the course of the afternoon.

18:30 Please join the expedition team in the Lounge for Captains Cocktail and daily recap.

19:00 Dinner will be served in the Restaurant on Deck 4.

21:00 Eduardo would like to invite you to the lecture room for his lecture called 'Our Earth, The Arc of Meridian Expeditions, The Scale of the Solar System'.



# OCEANWIDE

EXPEDITIONS

## North Spitsbergen

### In search of Polar Bear & Pack Ice – Summer Solstice, Arc of Meridian 18<sup>th</sup> June 2022

#### *Day 3 – Indre Norskoya, Smeerenburg and Virgohamna*

- 07:00 Wake- up call
- 07:30-8:30 Breakfast buffet in the Restaurant, Deck 4.
- 08:30 Please can the **Red** Group be ready at the shell doors on Deck 3 for a zodiac cruise of Indre Norskoya.
- 08:45 Please can the **Blue** Group be ready at the shell doors on Deck 3 for a zodiac cruise of Indre Norskoya.
- 12:30-13:30 Buffet lunch will be served in the Restaurant on Deck 4.
- 14:00 Please can the **Blue** Group be ready at the shell doors on Deck 3 for a landing a landing at Smeerenburg.
- 14:15 Please can the **Red** Group be ready at the shell doors on Deck 3 for a zodiac cruise of Virgohamna.
- Groups will swap during the course of the afternoon.
- We will be encouraging a short beach clean-up at the end of the landing.
- 18:30 Please join the expedition team in the Lounge for daily recap.
- 19:00 Dinner will be served in the Restaurant on Deck 4.
- 21:00 Eduardo would like to invite you to the lecture room for his lecture called 'Beyond our Solar System, Our Galaxy and the true scale of our Universe'.





**North Spitsbergen**  
**In search of Polar Bear & Pack Ice – Summer Solstice, Arc of Meridian**  
**19<sup>th</sup> June 2022**  
***Day 4 – Grahuken and Monacobreen***

- 07:00 Wake- up call
- 07:30-8:30 Breakfast buffet in the Restaurant, Deck 4.
- 08:30 Please can the long hikers be ready at the shell doors on Deck 3 for a landing at Grahuken.
- 08:45 Georgina invites you to the lounge for her presentation about photography.
- 09:30 Please can all other guests be ready at the shell doors on Deck 3 for a landing at Grahuken.

If you would like to participate in the polar plunge, please wear your swim wear under your expedition clothing. We provide the towels, please do not bring the ones from your cabin. The swim will be at the end of the landing.

13:00-14:00 Buffet lunch will be served in the Restaurant on Deck 4.

- 14:15 Mikhail would like to invite you to the lounge for his presentation called 'Arctic Awhaleability: The past, present and future of cetaceans in the Arctic'.
- 15:15 Please can the **Blue** Group be ready at the shell doors on Deck 3 for a zodiac cruise at Monacobreen.
- 15:30 Please can the **Red** Group be ready at the shell doors on Deck 3 for a zodiac cruise of Monacobreen.
- 18:15 Please join the expedition team in the lounge for daily recap.
- 19:00 Dinner will be served.



# OCEANWIDE

EXPEDITIONS

## **North Spitsbergen** **In search of Polar Bear & Pack Ice – Summer Solstice, Arc of Meridian** **20<sup>th</sup> June 2022** ***Day 5 – Sea Ice***

07:30 Wake- up call.

08:00- 09:00 Breakfast buffet in the Restaurant, Deck 4.

We hope to reach the ice edge in the early morning so please join the expedition team on the outside decks and help look for wildlife.

10:30 Sara welcomes you to her lecture about Polar Bears in the lounge.

11:45 Eduardo invites you to the lounge for his presentation called 'Einstein, Clocks & GPS'.

13:00-14:00 A buffet lunch will be served in the Restaurant, Deck 4.

14:30 Laura welcomes you to her lecture about Sea Ice and the effects of Climate Change in the lounge.

16:30 Hazel would like to invite you to the lounge for her presentation on Pinnipeds (Seals and Walrus) of the Arctic.

18:15 Please join the expedition team in the Lounge for Daily Recap.

19:00 Dinner will be served in the Restaurant on Deck 4.



**North Spitsbergen**  
**In search of Polar Bear & Pack Ice – Summer Solstice, Arc of Meridian**  
**21<sup>st</sup> June 2022**  
***Day 6 – Signehamna and Ny Alesund***

- 07:00 Wake- up call
- 07:30-8:30 Breakfast buffet in the Restaurant, Deck 4.
- 08:30 Please can the **Red** Group be ready at the shell doors on Deck 3 for a landing at Signehamna.
- 10:00 Please can the **Blue** Group be ready at the shell doors on Deck 3 for a landing at Signehamna.

Claudio is going to offer a presentation about Climate Change in the lounge, this will be delivered twice so everyone on board can attend, it will be given at 8:45am and again at 10:45am.

12:30-13:30 Buffet lunch will be served in the Restaurant on Deck 4.

- 14:30 Please can the **Blue** Group be ready at the shell doors on Deck 3 for a landing at Ny Alesund.
- 14:45 Please can the **Red** Group be ready at the shell doors on Deck 3 for a landing at Ny Alesund.

There will be a guided walk leaving from the Amundsen Bust for the **Blue** group at 15:30 and for the **Red** group at 16:30. Alternatively you can meet Andrew and Cas outside the shop at 16:00 and join their 'Walk and Talk - Birds'.

The shop will be open until 17:00 and accepts most credit cards and Norwegian Krone. If you wish to have your passport stamped with a souvenir stamp, please take it ashore with you.

- 18:30 Please join the expedition team in the lounge for daily recap.
- 19:00 Dinner will be served in the Restaurant on Deck 4.
- 21:00 Eduardo would like to invite you to the lecture room for his practical workshop 'How to Use a Sextant'.



**North Spitsbergen**  
**In search of Polar Bear & Pack Ice – Summer Solstice, Arc of Meridian**  
**22<sup>nd</sup> June 2022**  
***Day 7 Skansbukta and Ymerbukta***

- 06:45 Wake- up call
- 07:15-8:15 Breakfast buffet in the Restaurant, Deck 4.
- 08:15 Please can the **Blue** Group be ready at the shell doors on Deck 3 for a landing at Skansbukta.
- 08:30 Please can the **Red** group be ready at the shell doors on Deck 3 for a zodiac cruise at Skansbukta.

The groups will swap during the course of the morning.

12:30-13:30 Buffet lunch will be served in the Restaurant on Deck 4.

- 14:30 Please can the **Red** Group be ready at the shell doors on Deck 3 for a landing at Ymerbukta.
- 15:00 Please can the **Blue** Group be ready at the shell doors on Deck 3 for a zodiac cruise at Ymerbukta.

The groups will swap during the course of the afternoon.

- 19:00 Join the expedition team in the lounge for the Captains Farewell Cocktail and a viewing of the voyage slideshow.
- 19:30 Dinner is served in the Restaurant on Deck 4.

During the afternoon/evening you can settle your accounts with the Hotel Department, they will announce when they are ready to process payments. We will collect your rubber boots before dinner, please listen for announcements.



# **OCEANWIDE**

EXPEDITIONS

## **North Spitsbergen In search of Polar Bear & Pack Ice – Summer Solstice, Arc of Meridian 23<sup>rd</sup> June 2022**

### ***Day 8 – Longyearbyen***

- 07:00 Wake-up call
- 07:15 Please leave your large luggage in the corridor outside your room for the staff to collect. Crew and staff will bring it to the pier, where you will need to personally identify it and bring it your bus.
- 07:30-08:30 A breakfast buffet is served in the Restaurant on Deck 4.
- 08:30-09:15 Please be ready at the shell doors for a zodiac transfer to the pier.
- 09:00-09:30 Buses will be departing from the quayside to Longyearbyen city centre.

Thank you all for a wonderful voyage, for your company, good humour, and enthusiasm. We hope to see you again in the future and share more adventures with you.