



OCEANWIDE

EXPEDITIONS

on board
M/V Ortelius
July 22nd – July 31st, 2022



M/V *Ortelius* was named after the Dutch cartographer Abraham Ortelius (1527-1598) who published the first modern world atlas, the *Theatrum Orbis Terrarum* (Theatre of the World) in 1570. MV *Ortelius* was built in 1989 in Gdynia, Poland, as a research vessel for the Russian Academy of Science and was named *Marina Svetaeva*. In 2011 she was purchased by Oceanwide Expeditions. The vessel was re-flagged and renamed *Ortelius*. Now the ship is sailing as a 108-passenger vessel. *Ortelius* is 91 m long, 17,6 m wide and has a maximum draft of 5,80 m, with an Ice Strength rating of UL1/1A, top speed of 12 knots and one diesel engine generating 3200 kW.



Captain Mika Appel

and his international crew of 51 (16 Nationalities)

Including

First Officer:	Maikel Overbeek	[Netherlands]
First Officer:	Mladen Svic	[Croatia]
Second Officer:	Anika Albrecht	[Germany]
Third Officer:	Warren Villanueva	[Phillipines]
Chief Engineer:	Aleksandr Bondarev	[Lithuania]
Hotel Manager:	Volodymyr Cherednychenko	[Ukraine]
Head Chef:	Heinz Hacker	[Austria]
Sous Chef:	Ivan Ivanovic	[Serbia]
Sous Chef:	Norman Estrada	[Philippines]
Ship's Physician:	Mark Dalton	[England]
Expedition Leader:	Pippa Low	[Scotland]
Assist. Expedition Leader:	George Kennedy	[Australia]
Expedition Guide:	Miriam Vermeij	[Netherlands]
Expedition Guide:	Werner Kruse	[South Africa]
Expedition Guide:	Jacob Malecki	[Poland]
Expedition Guide:	Alexander Romanovskiy	[Russia]
Expedition Guide:	Hazel Pittwood	[England]
Expedition Guide:	Tiphonie May	[Falkland Islands]

Welcome you onboard!

Day 1 – July 22nd

Embarkation, Longyearbyen

GPS position at 1600: 78°14.1'N, 015°37.8'E

AirTemp:9°C Sea Temp: 3°C Weather: cloudy Wind: NW1 Sea state: 1

After a long-awaited departure (a few years for some of us) we finally land in Longyearbyen, the largest settlement in the Arctic Archipelago of Svalbard. The pull of the Arctic; its varied landscapes, history, the fascination of ice, flora and fauna plagued by a harsh climate, the anticipation of encountering wildlife and birds only seen in the Arctic draws visitors from all corners of our planet. Our ship for the next 9 days, the *M/V Ortelius*, brings us together to explore the pristine environment of the high Arctic.



Embarkation day is always an exciting time. The day was a little overcast, but the cooler weather mostly stayed away as *Ortelius* lay alongside the pier at the Longyearbyen awaiting her next guests. As 4pm came closer, guests started turning up to the pier ready to board until we had all arrived ready for our epic adventure. The expedition staff waited on the pier to welcome us aboard before guiding us to reception to collect our keys and check in. There was much excitement in the air as everyone prepared for the journey ahead and settled onto the vessel. We were encouraged to explore the vessel while the last of the luggage was loaded and the ship prepared to leave.

Once all aboard, we were called down to the lecture room to attend the first of several mandatory briefings. The first included a safety briefing from the chief officer and house rules from the hotel manager. The chief officer instructed everyone on what to do in an emergency and how to recognise the various alarms. This included the instructions on what to do in the case of an abandon ship alarm. On completion of the briefings, we were instructed that there would be a practice abandon ship drill and that we were to muster at our assigned muster stations on the sounding of the alarm.

Ten minutes later the muster alarm sounded and the we all sprung into action, all arriving at our correct muster stations with our lifejackets in tow. We were then instructed on how to put them on and prepared for the case of an abandon ship. The abandon ship alarm was then sounded and we made our way up to the life boats. The drill went smoothly and after a few photos we were allowed to return to their cabins and back to exploring the various areas of the ship.

Half an hour later it was time for the second briefing of the day. This time located in the ships bar where champagne and orange juice were handed out to the guests ready to toast. During the briefing the captain was presented to the guests and made his introduction finishing with a toast to the success of the voyage. Then the guests were handed over to the expedition staff who would be our guides in the wilderness when we leave the ship for excursions. Expedition Leader Pippa introduced herself and then went on to introduce her team which was conducted with much wonderful applause. A multicultural team with a wealth of experience and delightful anecdotes made their introductions.

Finally, it was time for dinner, we made our way down to the restaurant for the first time. For the first meal a dinner buffet was prepared with a variety of delicious dishes all designed to delight by the wonderful kitchen staff hiding in the oceanwide kitchen. In the dining room we had an opportunity to meet our new ship mates for the first time and bond over travel stories to Longyearbyen and hopes for what we might see during the voyage. After all were well fed and watered, we were called to one final meeting in the lecture room to collect our boots and landing lifejackets. Essential items for our upcoming zodiac cruises and landings planned for the next week. Groups were called by decks to try on boots and find the best size for all the adventures ahead of us.

Finally, with everyone fed, suited and booted, the itinerary ended for the day allowing the us to spend some free time wandering the decks or head to our cabins to recover from the weariness of travel.

Day 2 – July 23rd

Ny-Ålesund and Fjortende Julibukta (14th July Bay)

GPS position at 1200: 78°55.8' N, 011°55.7' E

Air Temp: 7°C Weather: clear Wind: E Sea state: 2

Our first full day of expedition cruising officially began with a wake-up call from Expedition Leader (EL) Pippa at 7:15am, but some excited guests were already up and out on deck enjoying the spectacular scenery as we our morning destination of Ny-Ålesund. Going ashore would come later, first we needed our energy for the day's adventure so we headed for breakfast.

Everyone enjoyed helping themselves to a varied buffet with many delicious options whilst the friendly dining room staff served us coffee and tea. After breakfast Pippa delivered the mandatory briefing from AECO (the Association of Arctic Expedition Cruise Operators) to

inform visitors of responsible behaviour towards the environment, people and wildlife of the Arctic during their visit to this beautiful region. This was followed by briefings regarding zodiac operations and polar bear safety which would come in useful later for our afternoon activities. After the briefings, Pippa gave us information regarding the research settlement of *Ny-Ålesund*, which would visit this morning, and the stunning area of *Fjortende Julibukta* (14th July Bay), for our afternoon adventures.

Having arrived at the pier in *Ny-Ålesund* we left *Ortelius* at 10:15am and relished the opportunity to stretch our legs. This place is the most northern research town in the world where numerous nations have bases conducting fieldwork on a wide range of subjects, from bird life to glaciers to botany. On arrival there was time to wander around within the settlement with several things of interest to see/visit, including the museum, the Amundsen bust statue and the working dog kennels. For those interested in birds, **Arctic Terns**, **Barnacle Geese**, **Ringed Plover**, **Black Guillemot**, **Black-legged Kittiwake** and **Snow Bunting** got our wildlife list off to a start. We also had time to look around in the *Kongsfjordbutikken*, the settlement's store, and visit the old post office. Some of us marked our passports with a unique stamp stating the location of the town.



A walk to the historic mast was also offered. The mast was built to anchor down the air ship *Norge* which was used by a team of explorers, including Norwegian hero Roald Amundsen, to cross the North Pole. His achievement is honoured with the presence of the bust memorial in the settlement. Expedition Guide George told the fascinating story of the *Norge* airship expedition, and later of *Italia*, and the fates of the explorers involved. At around 12:30am we returned to *Ortelius* and the bridge crew began navigating us to our next destination.

After lunch we had a split activity, this meant that whilst some guests were ashore others enjoyed a zodiac cruise. The expedition crew scouted for polar bears and once the area was confirmed to be safe we were good to go! A perimeter boundary of expedition guides was set up with glaciologist Jakub appropriately positioned at one end, near the glacier, and Miriam at the other end next to the 'hanging gardens', an area full of plant life. We saw Svalbard Reindeer munching on vegetation and for the birders **Kittiwakes**, **Little Auks**, **Brünnich's Guillemot** and **Arctic Skua** provided interest. The stars of the zodiac cruise were the Atlantic

Puffins which could be seen very well on an area of low cliff where they were nesting. After all of us had the opportunity to do both activities it was time to return to Ortelius for the evening recap followed by dinner. What a great first day of our expedition!



Day 3 – July 24th Monaco Breen, Texas Bar & Moffen Island

GPS position at 1200: 79°32.6' N, 012°30.3' E

Air Temp: 8°C Weather: Fog Wind: WSW Sea state: 2

Our day started with a wonderful breakfast in the restaurant to prepare ourselves for the adventures of the day. The morning was cold and foggy but the sight of the icebergs drifting eerily in the mist only added to the sense of expedition. Behind the icebergs and brash ice loomed the enormous ice cliffs of the glaciers of Monaco Breen. Ten zodiacs were dropped and we prepared to board for our zodiac cruise of the glacier front and surrounding icebergs. Firstly, our guides navigated the zodiacs through the brash ice to get a closer look at some of the amazing icebergs closer to the ship. They had such a range of colour and shape making each one unique and fascinating to study up close. They could be white, blue, clear or in some cases even reddish or grey with the moraine from the hillside. One of the icebergs was providing a great resting spot for a group of Kittiwakes who called to us from high up on their icy perch.

Our guides then drifted us past the three main glacial fronts, they were colossal in size. One was up to 14 kilometres wide! As we drifted past we heard many rumblings as parts of the glacial came crashing down into the harbour we were navigating. Some of these were large and caused small waves that jostled our zodiac. After two hours it was time to go back to the ship for some lunch. Our guides battled the brash ice and larger pieces of ice to get us back safely to Ortelius just in time to warm up with a hearty meal.

During lunch the Ortelius repositioned herself across from Monaco Breen to a new location called Texas Bar. Here we were to have a landing and an opportunity to stretch our legs on a short, medium or long walk. The guides went out early in the zodiacs to scout the area for polar bears. Upon deciding it was safe, we were all brought to shore to join our hike leaders. The long hikers were led by George over hill and dale to ensure that we were well and truly exercised. We stopped briefly at a beautiful waterfall and on top of a large hill before forging

forward. Both medium and short hikers also enjoyed their hikes taking many opportunities to photograph the beautiful scenery before them. The valley was covered in beautiful green moss and purple flowers and a small hunter's cabin viewed the bay from the hillside.

All hikers finished their respective hikes at the landing site ready to head back to Ortelius for recap and then dinner. We had worked up quite an appetite with all the hiking! We returned to the ship, doffed our outdoor gear, then headed up to the bar to meet the guides once more for recap. Jacob gave a wonderful recap about his work in glaciology and the future of our dear glaciers.

Then Expedition Leader Pippa sprang a surprise on us. After dinner we would cruise past a small island filled with walrus! This would be our first opportunity to see them. We filed down to the restaurant with great excitement, we would reach the little island called Moffen around 9:30. So we ate heartily and dressed again for the outdoors ready to view the walrus from the decks. By this time the sun had finally decided to grace us with its presence, and we were treated to a sunlit view of the dozing walrus on the shore. The ship motored gently past as close as it could so we could view them with our cameras and binoculars. What an exciting and varied day we had! As we started to head to the next destination, we finally doffed our outdoor gear for the final time that day then headed to bed ready for tomorrow's adventure.



Day 4 – July 25th Sjuøyane (Seven Islands)

GPS position at 1200: 80°40.5'N, 020°17.9'E

Air Temp: 7°C Weather: partly cloudy Wind: NE Sea state: 2

Overnight we sailed to the northernmost islands of Svalbard – the Seven Islands! Very few people reach this remote and harsh destination. The land is truly barren with hardly any vegetation, but its richness is not necessarily in the plant life, but in its fauna. The impression

of hostile environment was magnified by foggy and humid weather, with dense clouds forming over the surrounding peaks.

Our Expedition Leader Pippa woke us up via the PA with a promise of a landing or a zodiac cruise along the shore of Phippsøya, a small island named after a British explorer Constantine John Phipps, who visited it in 1773. The expedition team scouted the area just after breakfast in search for a potential polar bear threat and other wildlife sightings. During their scouting trip they found us a group of walrus. At 9:00 we were ready to join the photographic walrus safari. After yesterday's long-distance sighting at Moffen it was amazing to see walrus from close! Chilly weather and lunchtime made us say goodbye to these wonderful animals and set track back to Ortelius at noon.



During the lunch a sudden announcement from Pippa electrified the whole ship – the officers on the bridge had spotted a **Polar Bear**! The team immediately changed the original day schedule and at 13:00 we were again ready for zodiac embarkation. We patiently waited and observed how the crew sets the flotilla of ten zodiacs back on the water, whilst trying to keep bear in sight, some hundreds of metres away. From time to time it disappeared behind a boulder or a big gravelly ridge near the beach, but then reappeared, which made us all happy and excited to soon see the King of the Arctic eye to eye. We embarked the zodiacs around 13:30-14:00 and headed towards him.

The large male bear crawled lightly on weathered rocks and boulders covering a steep mountain slope as if it was a Sunday walk in a park. We were all excited, as some of us doubted that we would see it at all. Then the bear laid down just at the shore and for over half an hour we took thousands of photographs. At one point a group of walrus females and pups drop by to say “hello” to the bear and played peacefully in the sea, extending their heads and tusks high above the water. Both species could now be pictured on a single frame, merely 50 metres from each other – could there be any more iconic postcard from an Arctic expedition?



The bear, now apparently relaxed, moved again along the shore. We followed his route very calmly and soon slowly turned back towards the ship. On our way back we met several other groups of walruses, some of them popping out of the water just 40 metres from us, all of which have been well portrayed with our camera lenses. Before 16:00 we were back onboard *Ortelius*, so happy to encounter the two most iconic arctic animals on a single cruise! Soon after arrival our expedition guide Hazel gave us a great lecture about polar bears, their biology and adaptations, and just before the lunch the Assistant Expedition Leader George made an entertaining talk about the geopolitical arctic aspirations of Iceland. At 19:00 we enjoyed another delicious dinner by our chefs and most of us went to bed early. Firstly, because of the very emotional wildlife sightings, but secondly because early in the morning we are about to cross the sea ice edge on the Arctic Ocean!

Day 5 – July 26th Pack-ice!

GPS position at 1200: 82°05.5' N, 015°12.3' E

Air Temp: 5°C Sea Weather: Cloudy Wind: NE Sea state: 3

When we awoke this morning it felt like we had arrived in another world. In the early morning *Ortelius* had reached the edge of the sea ice and we would spend the day journeying through it! Huge, flat pieces of ice split, creaked and shifted as we passed through them; we marvelled at the beautiful shapes, colours and patterns of this frozen seascape. It was hard for us to imagine seeing a Polar Bear up here in this vast, constantly shifting habitat, having previously seen them on terra firma, but the Expedition Team explained they could certainly be found here (we'd just need to spot them!)

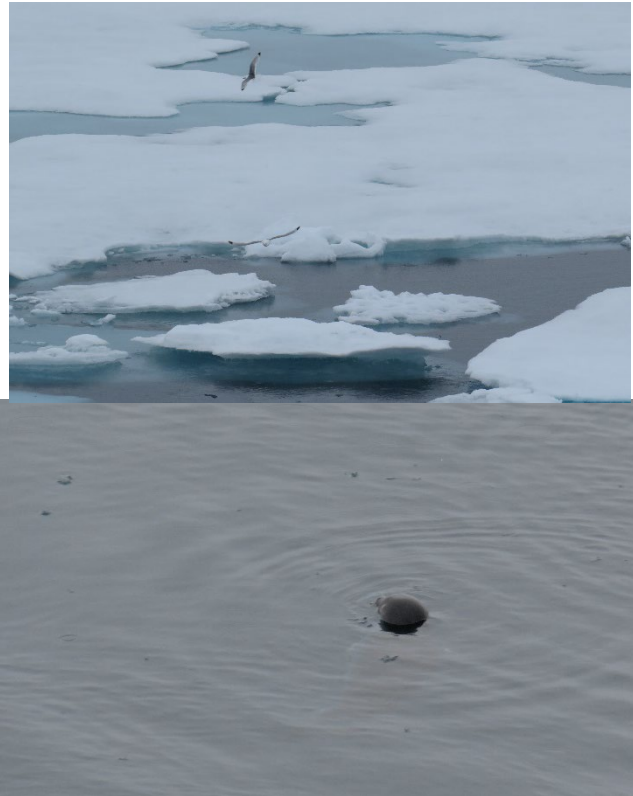
This was a fantastic day for bird life. **Black-legged Kittiwakes** accompanied the ship, hoping to catch a glimpse of fish that would dart into view as we moved amongst the broken ice.

Numerous **Long-tailed Skua** were observed; at one point five of these elegant looking, agile birds landed together. The avian stars of the day though were the pure white plumaged **Ivory Gulls** and strikingly patterned **Sabine's Gull**. It was a quiet day for the mammals overall, but **Ringed Seals** were seen occasionally. This small Arctic seal species (up to 1.5m in length) lives up in the ice year-round, maintaining breathing holes using their sharp claws during the winter.



Alongside enjoying the incredible views and wildlife outside, our Expedition Team offered a varied programme of lectures. Sasha gave the first talk of the day, explaining the discovery of the Spitsbergen archipelago and the people of this remote Arctic region. After lunch Hazel introduced us to the pinnipeds (flipper footed marine mammals) and described the species we could see during our trip, such as the Ringed Seals we had observed earlier. Thirdly, Werner provided us with his lecture on photography, giving technical tips on features such as composition and exposure.

Our awe-inspiring day amongst the ice in the far North drew to a close as we headed to dinner that evening. The bridge team skilfully navigated *Ortelius* out of the ice and back into open water, heading Southwards. We wondered what excitement and new experiences would await us tomorrow!



Day 6 – July 27th

Alkefjellet – Whalbergøya - Torellneset

GPS position at 1200: 79°23.3'N, 019°23.4'E

AirTemp:5°C Weather: Partly Cloudy Wind: NNW5 Sea state: 3

We had a lovely, early, wakeup call at 6:45 because there were whales around the ship, and it turned out to be the largest whales there are! Despite the hard wind, we could see that the blow was really high! Which along with the shape of the fin, the blue colour, the pattern on the whale and the fact that the whale showed its tail, allowed us to identify that it was a **Blue Whale**. We saw three of them in total and all before breakfast.

Our planned outing this morning, a zodiac cruise along the bird cliffs of Alkefjellet, was cancelled because of the hard wind (20-25 knots). Plan B was a ships cruise with Ortelius along the bird cliff. The way down we were really protected by Ortelius, but after the captain turned the ship to go up again, we felt the wind and, even if it was a bit of a disappointment, everybody was happy that we were not in the zodiacs at that moment. The original name of this place was 'Mount Guillemot', for obvious reasons! About 60,000 breeding pairs of **Brünnich's Guillemot** use this dolerite intrusion to lay their cone-shaped eggs on the narrow ledges. Both parents sit for 32 days and feed the chick for three weeks, from the day they arrive until it's time for the chick to fledge. For these chicks it means they have to jump down from the cliff and go out into the world to fend for themselves. On these cliffs, the birds have found a natural fortress to help defend against predators.

We hoped that the wind would go down but around 10:30 it still didn't go down, so we decided to sail to Whalbergøya. During this trip George gave a lecture called; Who Owns the Arctic? A struggle between collective identity and sovereign ambition. After an informative and interesting lecture, with funny facts, we still didn't know. The conclusion is that the Arctic remains a uniquely contested space, that the geopolitics of the Arctic is intensely dynamic and that maritime borders remain contested as well.

In the afternoon, we had Whalbergøya on our program, an island with an Arctic beach which is often used by walrus to haul out. We hoped that they would be home, but unfortunately, they were not. We split into three groups: a long and faster hiking group, a medium group and a group that stayed at the beach. All groups saw flowers, bones of different animals and at the end of all hikes we found one walrus, swimming in the water.

Back on board we gathered in the bar for coffee and cake, and recap. Hazel told us how to recognize whales and now we definitely know they were blue whales this morning. We had a lovely dinner again and as a backdrop, we had the magnificent glacier Bråsvellbreen, which is a part of Austfonna, the second largest icecap of the northern hemisphere.

So, it was an early morning but after a real expedition style day like this everybody almost forgot that.

Day 7 – July 28th

Kapp Lee & Sundneset

GPS position at 1200: 78°05.3'N, 020°45.0'E

Air Temp: 6°C Weather: partly cloudy Wind: W Sea state: 3

The day was supposed to start relatively early and it actually did. We had our breakfast about half an hour earlier than usual and started getting ready for our morning activity. The plan was to land at a place called Kapp Waldburg to take a walk to a Kittiwake cliff, but apparently not far from the landing site there was big and fluffy surprise waiting for us: our expedition guides spotted a Polar bear when doing pre-landing scouting. The landing was obviously impossible, so we had to change our plans and sail to a different location.

After a while Ortelius dropped the anchor in front of Dolerittneset also known as Kapp Lee. The weather was fine, the scouting defined (?) no Polar bears in the area and very soon the zodiacs were put on the water. Dolerittneset was a beautiful cape covered with rich vegetation. In some places the grass was so thick, that when walking one could get a feeling of walking on a carpet. Of course, where there is rich tundra, there are always reindeers. We spotted several of them walking around, chewing the vegetation and not paying any attention to us, which gave us a good opportunity for taking pictures.



The other, but definitely not the least special feature of Dolerittneset is presence of walrus. Since ages ago it has been a traditional haul out place for these wonderful animals. Nearby there were the remains of the huts of the Russian Pomors, who were known as walrus hunters.

This time we were lucky to see about 50 walrus sleeping together at the shore. Well, some of them were not sleeping, but moving slowly and disturbing their sleeping brothers. Each of us had a chance to take good photos.



When the time had come to have lunch we were shuttled back onboard Ortelius.

After lunch the Captain and the expedition leader made a decision to go back to the strait of Freemansund and look for bears. What if the bear who did not let us land in the morning was

not alone? After all, Freemansund has a reputation of one of the most “beary” places on Spitsbergen. This idea was absolutely brilliant, because very soon we spotted a bear sleeping not far from the coast at a place called Sundneset. The decision was made to have a Zodiac cruise to try to approach the bear as closed as possible.

As soon as the Zodiacs were on the water we took a course directly to the bear. At first, the bear stayed motionless, but then woke up and started walking along the shore. The guides identified the bear as a female. We spent about two hours on the water looking at the bear and taking pictures. Some of us even ran out of memory on their cameras. That was an unforgettable sighting!

Before the dinner we had a recap and briefing about the plans for the following day in the bar. This was definitely one of the best days of our expedition!



Day 8 – July 29th Gashamna & Burgerbukta

GPS position at 1200: 76°56.7’N, 018°48.9’E

Air Temp: 6°C Weather: Fog & Rain Wind: NW Sea state: 1

Overnight we cruised from eastern to southern Svalbard – to the Hornsund fjord in south Spitsbergen. From the early morning the weather was modest, with relatively low clouds covering the highest mountain tops. During breakfast around 8:00 AM we entered the fjord and around 10:30 we were ready to embark zodiacs to see Gashamna, or the Goose Bay, with interesting cultural heritage remains from the whaling era from the late 19th century. A small wooden cabin built near the shore by the Russian scientists, Konstantinovka, played a key role

in describing the shape of our planet! Unfortunately, at exactly this time the weather started to worsen – although waves and tiny raindrops splashing on our faces failed to cool our adventurous attitude, a fog descending to the sea level greatly limited visibility. After a brief visit at the coast the expedition team decided to cancel the landing due to the polar bear threat. Shortly after, Ortelius lifted its anchor and sailed to another destination.

After lunch, about 3:15 PM, the zodiacs were back on the sea to take us to one of the many pearls of the Hornsund landscape – to a marine-terminating glacier, Paierlbreen in Burgerbukta. Those of us who decided to join the longest of the zodiac cruises and to experience harsh arctic weather for the second time today, did not regret it. This fast-retreating glacier, a true climate warming victim which shortened by 5-6 kilometres over the past 85 years, sits in a beautiful bay, with some high vertical rock walls, waterfalls, several small cirque glaciers on both sides and amazing geology. The bay was filled with plenty of birds (including a few puffins!) and picturesque icy bits. Last, but not least, the cloud cover started to shred just above the glacier offering us wonderful close-up views of this natural monument. We got back to Ortelius about 6:00 PM. Wet but happy to experience another close encounter with the Arctic nature at its best.



After our return Pippa, the expedition leader, announced our plans for tomorrow and invited to join the surprise prepared by our dining team – a barbeque on the ship's helipad! Food, music, beer and wine gathered us together in a perfect moment of better weather with views opening towards nearby mountains and many of the area's glaciers. The event was a great conclusion of a true expedition day, full of experiences and demanding conditions.

Day 9 – July 30th

Skahnsbukta & Billefjorden

GPS position at 1200: 78°31.3'N, 016°01.9'E

Air Temp: 10°C Weather: overcast Wind: N2, Sea state: 1

Today was our last day on our favourite expedition ship and as expected it was just as exciting if not more than any other day. While we enjoyed a wonderful breakfast the Ortelius arrived into our next location, a scenic little bay called Skahnsbukta featuring a small cabin, abandoned gypsum mine and an overturned boat wreck. Our guides went ashore first as usual to scout the site for polar bears by zodiac and on land. All appeared clear until they noticed that the window of the cabin was broken and some suspicious looking fur was hanging around on the woodwork. Upon discovery of the fur, a huge exhale and the sound of shifting furniture came from within the cabin, prompting our guides to make a hasty retreat to the zodiacs. There was a bear inside!!!



Once all the guides were back in the boats, a change of plans was announced. Obviously, we could no longer make a landing but a zodiac cruise was definitely possible. We all loaded up into the zodiacs as quickly as possible and by this time the bear had decided to come out of the cabin. We all lined up like ducks in a row and took turns to take pictures of the animal who'd given the guides such a fright. He was a very large bear and while we were watching he decided to have another go at redecorating the cabin by ripping off the wood shuttering the windows. He then decided to climb back into the cabin for another little nap.

We then continued our cruise around the corner to some beautiful, picturesque bird cliffs. The cliffs were filled with guillemots, puffins and kittiwakes who filled the air with the flapping of wings and sound of kittiwake calls. Then we had our second amazing encounter of the day. We spotted an Arctic fox up high on the hillside underneath the bird colonies. He was very far

away but we enjoyed seeing him transverse the hillside with great speed and agility. Once he had gone out of sight we returned to the bay for one last look at the bear who had once again left him cabin and had decided to take a nap up on a hillside. It started to rain quite heavily so we said goodbye to the bear and headed back to the ship for lunch.

We then started sailing onto our next possible landing site unfortunately however the weather was not on our side today and the fog closed in making landing impossible. Our last activity would have to be a ships cruise of Billefjorden which turn out to be a real treat. We were greeted by a pod of over 25 Beluga whales!! We had ticked off all the major species that we had hoped to see. They looked beautiful swimming along either sides of the ship. They were so fast and so agile that often it was hard to spot them amongst their splashing.



We watched them for a about an hour and then it was time for a series of mini lectures put on by the expedition staff including topics such as plants of the arctic and Andre's balloon story both of which we very much enjoyed.

Then sadly it was time to start making preparations for our leaving the ship tomorrow. We handed back our boot and then rejoined the staff in the bar for the captain's cocktail hour. Thanks and goodbyes were shared by the staff, captain and guests, followed by raising a glass to successful onward travel. Then it was time for our final dinner, delicious as always, followed by a parade of all the hospitality staff and everyone who has taken care of us over the last ten days so we could give them proper recognition.

Finally, our last day was done and its time to pack for the early morning tomorrow and spend a few last precious moments with all the new friends we have made.

Day 10 – July 31st

Disembarkation Longyearbyen

GPS position at 0800: 78°14.1'N, 015°37.6'E

Air Temp: 7°C Weather: cloudy Wind: WSW3 Sea state: 1

Unfortunately, every trip comes to an end. Disembarkation starts early in the morning. The crew takes care of our luggage, so all that remains is to say our goodbyes to our newly made friends, fellow travellers and all the welcoming faces of the Ortelius we have come to know so well. The Ortelius lays up alongside the jetty, so we take some last photos before saying goodbye to the expedition staff. Some of us may have some days left in Svalbard or mainland Norway, others may have to get back to work when coming back home. Regardless, we all take home many great memories, thousands of photographs and new friends made. The Arctic is an incredible and unique part of our planet, and we are grateful to have had the opportunity to observe and soak up this pristine and fragile environment!



Thank you all for joining us on this remarkable adventure, for your great company, good humour and enthusiasm. We hope to see you again in the future, wherever that might be!

**On behalf of
Oceanwide Expeditions,
Captain Mika Appel,
Expedition Leader Pippa Low,
Hotel Manager Volodymyr Cherednychenko**

**and all the crew and staff,
it has been a pleasure travelling with you!**



OCEANWIDE
EXPEDITIONS

Pippa Low – Expedition Leader



Pippa has worked as a marine guide and skipper for 10 years, primarily in Scotland, Australia, New Zealand and the polar regions. A marine scientist specialising in marine mammal research and conservation, she splits her time between the hemispheres, and loves showing the public the marine world and all it has to offer.

Growing up on the coast of the incredible Moray Firth sparked a love for the marine world and its inhabitants. Spending every spare minute in, on or under the water; professional life reflected this love from a young age,

becoming an instructor in various marine disciplines and going on to study Marine biology at university in Scotland, then later, Australia.

Upon completion of her degree, Pippa has worked as a marine mammal observer, scientific diver and research assistant on various research projects; including photo ID, migration, distribution and behavioural studies on a range of marine mammals. She has developed a keen interest in marine mammal conservation through outreach and research.

After working in the Ross Sea region of Antarctica as a research assistant, she fell in love with Antarctica. Pippa now works as a full-time guide and assistant expedition leader in both the Arctic and Antarctica. In-between seasons, she still finds time to work on research projects.

George Kennedy – Assistant Expedition Leader



George is an anthropologist and political scientist currently studying at the Australian Institute of Marine and Antarctic Science. He has a keen interest in cultural identity and contemporary geopolitics in the polar regions. His current research focusses on the complex dynamics between indigenous, scientific and political stakeholders in their pursuit of environmental protection in Antarctica and the Arctic.

In his practice as an anthropologist, George has worked predominantly with community development organisations in Latin America. His work has focussed on identifying collaborative solutions to support environmental conservation and sustainable tourism in Patagonia and the Amazon basin.

Prior to his work in anthropology, George served as a paramedic in Australia, still occasionally throwing on the uniform to work with Ambulance Victoria in Melbourne.

Second only to expedition cruising, George's great passion is motorcycle travel. He has ridden from Mongolia to India, around Australia, and most recently from Patagonia to Mexico on his Kawasaki KLR650.

Miriam Vermeij – Expedition Guide



During her youth she travelled a lot with her parents and sister in Europe. Miriam developed an interest in nature at a young age and lots of time was spent outdoor, exploring local insects and plants. Following her interests, she followed an environmental science study and got a degree with a specialisation on soil pollution. Nowadays she is a self-employed environmental planning officer.

From 1999 the travelling outside Europe started and after a trip to South America, the Falklands and Antarctica in 2006 she got the passion for the poles. The first contact with the Arctic was in 2011 and after another trip in 2013 she came back as field assistant on the Dutch polar expedition (SEES) in 2015 and to the Dutch polar station in Ny Alesund in 2016. Since 2017 she has been guiding in the Arctic, followed by the Antarctic in 2018.

In Holland Miriam is a nature guide since 2003. First in the local forest and since 2008 also in one of the largest national parks in Holland: De Biesbosch. There she is guiding school kids and adult groups on walking and boating trips. She is also part of the board that manages the local forest.

Werner Kruse - Expedition Guide



Werner Kruse is a well-seasoned traveller and an experienced filmmaker, photographer and expedition guide. He has worked on numerous international productions and produced travel documentaries, including wildlife and expedition documentaries in Africa. His film, *The Boy from the Wild*, premiered at the Royal Geographic Society in London as well as the Wildlife Conservation Film Festival in New York City. Currently the film is available on Amazon Prime Video.

After completing his studies, he travelled extensively, making documentaries all over the world. He explored places such as Petra, Machu Picchu, Great Barrier Reef and Rapa Nui, Spitsbergen, Iceland as well as his favourites, the Hawaiian and Tahitian Islands. He is currently based in Cape Town, South Africa, working on TV shows, documentaries, commercials and corporate productions. He frequently travels abroad for various video and photographic assignments.

Werner is extremely passionate about conservation, particularly wildlife and the ocean and supports various environmental causes. His work depicting Gentoo penguins in Antarctica was featured by National Geographic, and his annual return to Antarctica remains a highlight for him. His travels have taken him to 112 countries, enabling him to capture a richly diverse spectrum of images.

Jakub Małecki - Expedition Guide



Jakub was born in Poland in 1985. As a kid, he dreamed of becoming an astronaut, but later his focus shifted towards astronomy. Eventually, he obtained a masters and doctoral degree in Earth Sciences and became a glaciologist. As he puts it, researching remote, glacier-covered regions is almost like landing on another planet, so the childhood dream has partly come true.

Since 2007 Jakub has been studying glaciers across the world, either directly or remotely, i.e., using satellite or aerial images. His main interest is how glaciers respond to changing climate in different environmental settings. Most of his glaciology work Jakub carries out on Svalbard, the arctic archipelago located midway between Norway and the north pole, where he fell in love with ice. Since then, Jakub joins expeditions to remote regions on an every-year basis.

Jakub considers public education by the science community at least as important as delivering new knowledge, so he is a keen glaciology communicator, book author and a frequent guest to the Polish media outlets and science festivals where he comments on polar and mountain affairs. Apart from glaciology, Jakub is a huge enthusiast of planetary sciences and space exploration and tries to play the ukulele.

Alexander Romanovskiy - Expedition Guide



Alexander Romanovskiy comes from Saint-Petersburg, the Northern capital of Russia. He was born in 1981. After having graduated from the boarding school Alexander entered Saint-Petersburg State University, where he spent 5 years studying physical geography, ecology, regional geography and international tourism. Afterwards he was working on his PhD thesis in Herzen State Pedagogical University of Russia, doing geoecological researches.

In the year of 2011 however, Alexander decided to pause his scientific career and start doing something completely different, which means working in tourism and traveling the world. He spent 2 seasons working as a trekking guide in Fann mountains (Tajikistan), 1 season on Novolazarevskaya Antarctic scientific station (Queen Maud Land, Antarctica) working as a member of a guesthouse crew.

Since February of 2012 most part of the year he spends on Svalbard. For five seasons in a row Alexander has been living and working as a guide in a ghost town of Pyramiden. In 2016 a new page in Alexander's guiding career was opened: he started working as a naturalist guide on cruise ships in polar regions of the world – Svalbard and Antarctica.

3 to 4 months a year Alexander dedicates to his main passion – traveling the world. No public transport, no hotels, only hitch-hiking and staying overnight with locals or sleeping in a tent. This way he has already visited almost all Soviet republics, Middle East (Iran, Turkey), Asia (China), South America (Argentina, Chile, Paraguay), and it is hopefully far not the end! The world is big, friendly and interesting to explore!

Hazel Pittwood - Expedition Guide



Hazel grew up in the county of Dorset on the South coast of the UK. A childhood spent pond dipping, bug hunting and exploring the countryside and coast nurtured her love of the natural world.

She has worked in practical conservation and community engagement roles for a variety of habitats, including heathland and coastal nature reserves. Hazel also has experience surveying rare protected species and is a trained wildlife rescue volunteer and marine mammal medic

Whilst she is broadly learned about the natural world, Hazel has specialised in marine mammals and seabirds since 2014. At that time she began volunteering as a marine mammal and seabird surveyor, collecting sightings data regarding these animals for UK based conservation charities. In 2017 she worked on a passenger ship travelling between the UK and Spain across the Bay of Biscay for six months, delivering talks and leading wildlife watching sessions out on deck.

Hazel has been working as a guide and lecturer on cruise ships for over three years. This role has taken her to Norway and Svalbard, Iceland, Alaska, Canada, the Faroe Islands, the Canary Islands, the Caribbean and Central America. She is a World Cetacean Alliance certified responsible whale watching guide, championing the highest standards of wildlife experiences.

The polar regions host an incredible diversity of seabird and marine mammal species and Hazel looks forward enhancing your encounters with these incredible animals with her knowledge, skills and enthusiasm.

Tiphanie May - Expedition Guide



Tiphanie is an 8th generation Falkland Islander living in Stanley. She was raised on a small group of islands called Speedwell Island Group, owned and worked by her parents as a sheep farm and family crab business.

Tiph was raised surrounded by Falkland's wildlife with her family island boasting rookeries of Magellanic penguins, Gentoo penguins as well as several other breeding birds. The islands also include haul outs of South American sealions and elephant seals. Surrounded by all this wildlife it was of no surprise that she found nature

fascinating. From the penguin couple that lived under her house to the wonderful variety of creatures found in the crab pots, marine life was a theme. This led to her to travel to the UK at 16 to study to be a marine biologist.

Tiph spent 6 years in the UK studying to get her BSc (HONS) Marine Biology and MSc in Marine Biology. Using her holidays to volunteer in the Falklands for various conservation projects to gain experience. Upon completing her studies, she joined the Government Fisheries Department, spending 200 days per year at sea monitoring seabird activity and collecting research material. The sea has been a big part of her life, from a young age she worked to haul crab pots with her father's boat. Later she went on to work for an experimental sustainable fish farm which allowed her to get her RYA qualifications in Power Boat. Tiph currently works full time operating a small boat in the Falklands.

Tiphanie started working in the tourist industry at the age of 23. Having grown up with no roads her whole life, 4X4 tour driving just made sense. Tiph has worked to provide a variety of tours such as hiking, 4X4 and penguin colony visits. In 2018, Tiphanie was offered the amazing opportunity to go to Antarctica and South Georgia with Oceanwide as guide. She fell in love with the scale of the landscape and has never looked back.

Ortelius OTL09-22

1. Longyearbyen
2. Ny-Ålesund
3. 14th Julibukta
4. Monacobreen
5. Texas Bar
6. Moffen Island
7. Seven Islands
8. Northern most point
9. Alkefjellet
10. Wahlbergøya
11. Brasvellbreen
12. Kapp Lee
13. Zodiaccruise polar bear
14. Gåshamna
15. Burgerbukta-Paierlbreen
16. Skansbukta
17. Adolfbukta
18. Tempelfjorden



Birds and Mammals of Svalbard, Ortelius 22-31 JOTL09-22

English Name	Latin	22-jul	23-jul	24-jul	25-jul	26-jul	27-jul	28-jul	29-jul	30-jul
Red-throated diver	<i>Gavia stellata</i>		x							
Northern Fulmar	<i>Fulmarus glacialis</i>	x	x	x	x	x	x	x	x	x
Barnacle Goose	<i>Branta leucopsis</i>		x							
Common Eider	<i>Somateria mollissima</i>			x	x		x	x	x	x
Ringed Plover	<i>Charadrius hiaticula</i>		x							
Purple Sandpiper	<i>Calidris maritima</i>		x							
Arctic Skua	<i>Stercorarius parasiticus</i>			x	x		x	x	x	
Long-tailed Skua	<i>Stercorarius longicaudus</i>					x				
Sabine's Gull	<i>Xema sabini</i>					x				
Glaucous Gull	<i>Larus hyperboreus</i>		x	x	x	x				x
Black-legged Kittiwake	<i>Rissa tridactyla</i>	x	x	x	x	x	x			x
Ivory Gull	<i>Pagophila eburnea</i>			x		x				
Arctic Tern	<i>Sterna paradisaea</i>		x	x	x		x	x	x	
Brunnich's Guillemot	<i>Uria lomvia</i>		x				x		x	x
Black Guillemot	<i>Cephus grylle</i>		x	x	x		x	x	x	
Little Auk	<i>Alle alle</i>		x	x					x	
Atlantic Puffin	<i>Fratercula arctica</i>		x						x	x
Snow Bunting	<i>Plectrophenax nivalis</i>	x	x		x			x		

MAMMALS

English	Latin	22-jul	23-jul	24-jul	25-jul	26-jul	27-jul	28-jul	29-jul	30-jul
Walrus	<i>Odobenus rosmarus</i>			x	x		x	x		
Bearded seal	<i>Erignathus barbatus</i>			x						
Ringed seal	<i>Phoca hispida</i>					x				
Minke Whale	<i>Balaenoptera acutorostrata</i>								x	
Blue Whale	<i>Balaenoptera musculus</i>						x			
Humpback Whale	<i>Megaptera novaeangliae</i>								x	
Beluga	<i>Dezhnevius leucas</i>									x
Polar Bear	<i>Ursus maritimus</i>				x			x		x
Arctic Fox	<i>Alopex lagopus</i>									x
Spitsbergen Reindeer	<i>Rangifer tarandus platyrhynchus</i>		x					x		



Around Spitsbergen, in the realm
of Polar Bear & ice
Friday 22nd July 2022
Longyearbyen - Embarkation

WELCOME ABOARD!

Luggage will be delivered to your cabin. Please make check to make sure you have received all your luggage. If you have any extra luggage in your cabin – please notify a crew member.

**** Tea and coffee are always available in the bar on deck 6 ****

- ±1715 **Welcome & safety briefing** - Please join us in the **lecture room** (deck 3, forward) for a welcome to the voyage, followed by a **mandatory** safety briefing and lifeboat drill.
- ±1800 **Departure** from Longyearbyen.
The bridge will be closed during these operations.
- 1815 **Expedition Introduction & Captain's Welcome** – Please join us in the **bar** (deck 6) for an introduction to the expedition, and to meet your expedition team.
- 1900 **Dinner** is served in the **dining room** (deck 4)
- ±2030 **Muck Boots** - We will hand out your muck boots from the **lecture room** (deck 3 forward) – Please listen for announcements – we will call you in groups.

We will sail into open sea this evening and the ship may move – please secure your belongings and be careful when moving around the ship.



Around Spitsbergen, in the realm
of Polar Bear & ice
Saturday 23rd July 2022
Ny Alesund & 14 Juli Bukta

- 0715 **Wake up call** – Good Morning
- 0730 **Breakfast** is served in the **dining room** (deck 4).
- 0900 **Mandatory briefings** – Please join us in the **lecture room** (deck 3) for the mandatory Zodiac, AECO and Polar Bear Safety briefings.
- ±1015 **Ny Alesund Landing** – We aim to visit Ny Alesund – the World’s most northerly settlement. Here we aim to offer a guided walk, visiting the mooring mast that was the starting point of Amundsen’s North Pole expedition. You will also be able to walk through the town and visit the museum and gift shop.
- 1300 **Lunch** is served in the **dining room** (deck 4).
- ±1500 **14 Juli Bukta Landing & Zodiac cruise** – We hope to take you for a landing and zodiac cruise. 14 Juli Bukta is a glacial bay with beautiful rich vegetation and stunning views. **Please listen for announcements** – we will call you in groups to board the zodiacs at the **zodiac boarding area** (deck 4). The first zodiacs will visit shore, whilst the remaining zodiacs will enjoy a zodiac cruise. We will swap mid-way through the afternoon so that all passengers can enjoy both activities.
- 1830 **Daily Recap** - Please join the expedition team in the **lounge** (deck 6) for our daily recap and briefing for tomorrow’s activities.
- 1900 **Dinner** is served in the **dining room** (deck 4).



Around Spitsbergen, in the realm
of Polar Bear & ice
Sunday 24th July 2022
Monacobreen & Texas Bar

0715 **Wake up call** – Good Morning

0730 **Breakfast** is served in the **dining room** (deck 4).

This morning we aim to take you on a zodiac cruise at Monacobreen – a large glacier in the Northwest of Spitsbergen. Here we have great opportunities to cruise through ice, past icebergs and spot wildlife and birds.

0900 **Monacobreen Zodiac Cruise** – Please listen for announcements – we will call you by deck to board the zodiacs.

1230 **Lunch** is served in the **dining room** (deck 4).

This afternoon we hope to land at Texas Bar – a great landing for hiking, as well as viewing the surrounding scenery and vegetation.

±1430 **Texas Bar Landing** – We will call you in groups to board the zodiacs;
~ 1430 – Long walkers please come to the zodiac boarding area.
~ 1445 – Medium walkers please come to the zodiac boarding area.
~ 1500 – Short walkers please come to the zodiac boarding area.

Please listen for announcements for zodiac boarding – times may vary.

1830 **Daily Recap** - Please join the expedition team in the **lounge** (deck 6) for our daily recap and briefing for tomorrow's activities.

1900 **Dinner** is served in the **dining room** (deck 4).



Around Spitsbergen, in the realm
of Polar Bear & ice
Monday 25th July 2022
Seven Islands
Phippsoya & Parryoya

0715 **Wake up call** – Good Morning

0730 **Breakfast** is served in the **dining room** (deck 4).

This morning we aim to land & zodiac cruise at Phippsoya – Svalbard’s most Northern group of islands. We hope to do a short landing on the island, followed by a zodiac cruise to, hopefully, see some walrus.

0900 **Phippsoya Landing & Zodiac cruise** – Please listen for announcements – we will call you by deck to board the zodiacs.

1230 **Lunch** is served in the **dining room** (deck 4).

This afternoon we hope to land at Parryoya. We aim to offer short, medium, and long walks on this far North Island of Svalbard.

1500 **Parryoya Landing** – Timing will depend on weather and if we need to relocate Ortelius. Please listen for announcements – we will call you in groups to board the zodiacs.

1900 **Daily Recap** - Please join the expedition team in the **lounge** (deck 6) for our daily recap and briefing for tomorrow’s activities.

1930 **Dinner** is served in the **dining room** (deck 4).



Around Spitsbergen, in the realm
of Polar Bear & ice
Tuesday 26th July 2022
Sea Ice day

At approximately 6am we will sail into the sea ice. We will spend today exploring the ice and searching for wildlife!

- 0745 **Wake up call** – Good Morning
- 0800 **Breakfast** is served in the **dining room**.
- 1030 **‘Spitsbergen – Where the Mystery Begins’** – Please join Sasha in **the bar** for his lecture on when and why the archipelago was discovered and a brief history of the people of Spitsbergen.
- 1230 **Lunch** is served in the **dining room**.
- 1400 **Pinnipeds** – Please join Hazel in **the bar** for her lecture on all things blubbery - seals and walrus.
- 1600 **Photography** – Please join Werner in **the bar** for his lecture on composition, exposure, and technical tips.
- 1830 **Daily Recap** - Please join the expedition team in **the bar** for our daily recap and briefing for tomorrow’s activities.
- 1900 **Dinner** is served in the **dining room**.



Around Spitsbergen, in the realm
of Polar Bear & ice
Wednesday 27th July 2022
Alkefjellet & Whalbergoya

0715 **Wake up call** – Good Morning

0730 **Breakfast** is served in the **dining room** (deck 4).

This morning we aim to zodiac cruise at Alkefjellet; a large Brunnich's Guillemot colony, with chances of spotting more bird species and arctic fox.

0930 **Alkefjellet Zodiac Cruise** – Please listen for announcements – we will call you by deck to board the zodiacs.

1230 **Lunch** is served in the **dining room** (deck 4).

This afternoon we hope to land at Whalbergoya; a small island in the middle of the Hindlopen strait. We will offer long, medium & short walks as well as a visit to the walrus haulout.

1500 **Whalbergoya Landing** – Please listen for announcements – we will call you in groups to board the zodiacs.

1800 **Daily Recap** - Please join the expedition team in the **lounge** (deck 6) for our daily recap and briefing for tomorrow's activities.

1830 **Dinner** is served in the **dining room** (deck 4).



Around Spitsbergen, in the realm
of Polar Bear & ice
Thursday 28th July 2022
Kapp Waldberg & Kapp Lee

0630 **Wake up call** – Good Morning

0645 **Breakfast** is served in the **dining room**.

This morning we aim to land at Kapp Waldberg. A kittiwake colony surrounded by the beautiful scenery of Freemansundet. As well as an incredible landscape, the landing is a great location for Svalbard reindeer and Arctic fox.

0730 **Kapp Waldberg Landing** – Please listen for announcements – we will call you by deck to board the zodiacs.

1200 **Lunch** is served in the **dining room**.

This afternoon we hope to land at Kapp Lee – the site is home to beautiful Arctic tundra, a hunter cabin and (sometimes) walrus.

±1330 **Kapp Lee Landing** – Please listen for announcements – we will call you in groups to board the zodiacs.

1830 **Daily Recap** - Please join the expedition team in **the bar** for our daily recap and briefing for tomorrow's activities.

1900 **Dinner** is served in the **dining room**.



Around Spitsbergen, in the realm
of Polar Bear & ice
Friday 29th July 2022
Hornsund
Gashamna & Burgerbukta

No wake up call this morning – enjoy!

0800 **Breakfast** is served in the **dining room**.

This morning we aim to do a short landing at Gashamna – one of Svalbard's oldest whaling stations. We will do a perimeter landing to view the cultural whaling remains and surrounding flora.

1100 **Gashamna Landing** – Please listen for announcements – we will call you by deck to board the zodiacs.

1300 **Lunch** is served in the **dining room**.

This afternoon we hope to zodiac cruise Burgerbukta – a beautiful fjord within Hornsund, with towering mountains, waterfalls, and icebergs.

±1515 **Burgerbukta Zodiac Cruise** – Please listen for announcements – we will call you in groups to board the zodiacs.

1800 **Daily Recap** - Please join the expedition team in **the bar** for our daily recap and briefing for tomorrow's activities.

1830 **Special Arctic Dinner** is served on **the Heli deck** – behind the bar. Dress warmly!



Around Spitsbergen, in the realm
of Polar Bear & ice
Saturday 30th July 2022
Billefjord
Skansbukta & Adolfbukta

0715 Wake up call – Good morning.

0730 **Breakfast** is served in the **dining room**.

***This morning we aim to land and zodiac cruise at Skansbukta inside Billefjord.
A beautiful site with mining remains, flora and chances for foxes and
reindeer.***

***We will also offer a polar plunge at the end of the landing & cruise. We will
bring the towels!***

±0930 **Skansbukta Landing & Zodiac cruise** – Please listen for
announcements – we will call you by deck to board the zodiacs.
The first group will land ashore, the remaining will cruise. We will
then swap halfway through the morning.

1230 **Lunch** is served in the **dining room**.

***This afternoon we hope to zodiac cruise Adolfbukta – a glacial bay with
opportunities for icebergs, birds, and wildlife.***

±1500 **Adolfbukta Zodiac Cruise** – Please listen for announcements – we
will call you in groups to board the zodiacs.

1830 **Captains Farewell & Slideshow** - Please join the expedition team in
the bar for our final recap, farewell from the Captain and the end
of trip slideshow.

1900 **Dinner** is served in the **dining room** – Bon Appetit!



Around Spitsbergen, in the realm
of Polar Bear & ice
Sunday 31st July 2022
Longyearbyen - Disembarkation

- 0430-0500 **Light breakfast** is served in the bar.
Please leave your large/check in luggage outside your cabin by 0445 – we will take it to the pier for you.
- 0730 **Breakfast** is served in the dining room.
Please leave your large/check in luggage outside your cabin before going to breakfast - we will take it to the pier for you.
- 0900 **Disembarkation** – Time to say goodbye! Please make your way to the gangway to disembark Ortelius.

If you are staying in town, please pick up your luggage from the pier and take it with you.

If you are flying out in the afternoon, please ensure your luggage has a green ribbon on and leave it at the pier – this will be transported to the airport for you.

A bus to the airport has been arranged to take you to the airport – it will depart from the town centre (where it drops you off) at 1130.

On behalf of the Captain and crew we thank you for sailing with us and hope you have enjoyed your voyage with us aboard Ortelius.

Safe travels home and we hope to sail with you again!