



OCEANWIDE

EXPEDITIONS

North Spitsbergen In search of Polar Bears and Pack Ice M/V Ortelius 31st July 2022 – 9th August 2022



M/V *Ortelius* was named after the Dutch cartographer Abraham Ortelius (1527-1598) who published the first modern world atlas, the *Theatrum Orbis Terrarum* (Theatre of the World) in 1570. MV *Ortelius* was built in 1989 in Gdynia, Poland, as a research vessel for the Russian Academy of Science and was named *Marina Svetaeva*. In 2011 she was purchased by Oceanwide Expeditions. The vessel was re-flagged and renamed *Ortelius*. Now the ship is sailing as a 108-passenger vessel. *Ortelius* is 91 m long, 17,6 m wide and has a maximum draft of 5,80 m, with an Ice Strength rating of UL1/1A, top speed of 12 knots and one diesel engine generating 3200 kW.



Captain Mika Appel

and his international crew of 52 (15 Nationalities)

Including

First Officer:	Mladen Svic	[Croatia]
Second Officer:	Mikael Svedburg	[Sweden]
Third Officer:	Warren Villanueva	[Phillipines]
Chief Engineer:	Guntis Dizbite	[Latvia]
Hotel Manager:	Volodymyr Cherednychenko	[Ukraine]
Head Chef:	Heinz Hacker	[Austria]
Sous Chef:	Ivan Ivanovic	[Serbia]
Sous Chef:	Norman Estrada	[Philippines]
Ship's Physician:	Sjoerd van der Knokke	[Netherlands]
Expedition Leader:	Claudio Ghiglione	[Italy]
Assist. Expedition Leader:	George Kennedy	[Australia]
Expedition Guide:	Miriam Vermeij	[Netherlands]
Expedition Guide:	Werner Kruse	[South Africa]
Expedition Guide:	Jacob Malecki	[Poland]
Expedition Guide:	Szymon Niezabitowski	[Poland]
Expedition Guide:	Hazel Pittwood	[England]
Expedition Guide:	Tiphonie May	[Falkland Islands]

We welcome you onboard!

Day 1 – 31st July

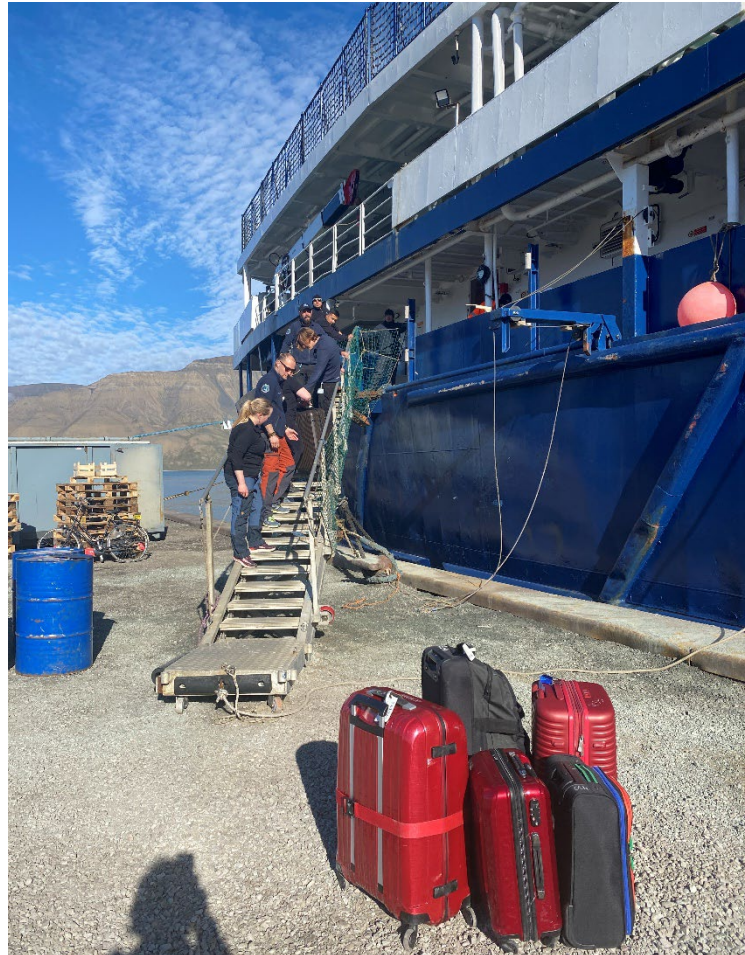
Embarkation: Longyearbyen

GPS position at 1600: 78°14.1'N, 015°37.8'E

Air Temp: 14°C Sea Temp: 1°C Weather: cloudy Wind: Light Sea: 1

Today was the day! Our long-awaited Arctic adventure was about to begin (a few years wait for some of us!) our story begins in Longyearbyen, the largest settlement in the Arctic Archipelago of Svalbard, where it was time to board *M/V Ortelius*, the ship that would be our home for the next nine days. What would we see on our travels? We could only guess at this stage, but the smiles on the faces of guests as they arrived showed the excitement everyone was feeling.

It was a bright, sunny day alongside the coal pier in Longyearbyen and at 16:00pm guests arrived ready to board for our epic trip. The expedition staff waited on the pier to welcome us



aboard and assist with our luggage before guiding us to reception to check in. We had a little time to settle in and get our bearings on board the vessel whilst the bridge team made preparations for the ship to depart from the pier.

With everyone aboard, we were called to the lecture room to attend the first of our mandatory briefings; a ship safety briefing from the chief officer and house rules from the assistant hotel manager. The chief officer instructed everyone on what to do in an emergency and how to recognise the various alarms. This included the instructions on what to do in the case of an abandon ship alarm including how to put on our emergency life jackets. On completion of the briefings, we took part in an abandon ship drill and gathered at our assigned muster stations on the sounding of the alarm.

Then it was time for the Captain's welcome and our second briefing of the evening. We all enjoyed raising a glass of our chosen beverage in celebration of starting the voyage whilst Captain Mika Appel introduced himself and welcomed everybody. This was followed by the mandatory AECO (Association of Arctic Expedition Cruise Operators) briefing to inform visitors of responsible behaviour towards the environment, people and wildlife of the Arctic during their visit to this region. It was then time for dinner so we made our way down to the restaurant on deck four for the first time. A delicious dinner buffet awaited us with a variety of dishes prepared by head chef Heinz and his galley team, served by our friendly dining room staff. After dinner we were called to one final meeting in the lecture room to collect our muck boots, essential for our zodiac cruises and shore landings. Once everyone had a pair of boots the formal itinerary for the day was over allowing the us some free time wandering the decks or head to our cabins to get a good night of rest before our first full day of the trip tomorrow.

Day 2 – 1st August

Fjortende Julibukta (14th July Bay) and Signehamna

GPS position at 1200: 79°07.6' N, 011°47.2' E

Air Temp: 12°C Weather: cloudy Wind: Light Sea: 1

Our day started with a 7:30 wake-up call from Expedition Leader (EL) Claudio inviting us to the dining room for a wonderful breakfast to prepare us for the long day ahead. An hour later we headed down to the lecture room to finish up the various mandatory briefings required for us to take part in the activities.

These covered everything from how to properly dress in the Arctic to how to safely enter the zodiacs. Then it was finally time for our very first expedition activity: a zodiac cruise around the stunning Fjortende Julibukta!



We watched with excitement as the crew and guides prepared and launched ten zodiacs. The weather was beautiful and sunny without a breath of wind. Then it was time for us to load into our zodiacs and head off into the bay. There was a variety of things to see including some beautiful bird cliffs where we saw our first **Atlantic Puffins!**



Alongside these colourful birds we also saw **Brunnich's Guillemots, Black Guillemots, Little Auks, Glaucous Gulls and Black Legged Kittiwakes**. We heard the Kittiwakes before we saw them; they were the loudest on the cliff face and even more of them soared above in the higher levels of the mountain. Some of us were lucky enough to see an **Arctic**

Fox running under the kittiwake colonies on the upper levels of the cliffs.

We then started pushing our way through the ice to the glacier front. As we got closer the brash ice and smaller pieces of ice became denser. Some of the small icebergs we saw were beautiful in shape and colour, with the striking blue pieces being a firm favourite. The ice front loomed ahead of us and spread across the edge of the bay at an impressive two kilometres wide. We learned about the receding glaciers due to higher temperatures and about how this glacier was receding at approximately 600 metres per year. After some time cruising the front of the glacier it was time to return to the ship for lunch. We enjoyed a wonderful buffet in the restaurant while the ship was repositioned for our next adventure.



We arrived at Signehamna in the mid afternoon and our guides headed to scout the shore for bears to make sure it was safe to land. They quickly came back after sighting a **Polar Bear** and her cub on the hill side! For this reason, there was a change of plan and our scheduled landing was converted to a zodiac cruise. We all loaded into the zodiacs again and headed straight for where the bears were sighted. There nestled on top of the hill was a little polar bear cub and its mum sleeping peacefully. We stayed and watched them for some time then we started cruising the rest of the bay. They were quite some distance so binoculars were a must for today. A **Walrus** and a **Bearded Seal** were spotted amongst the ice but at quite some distance. We continued our cruise of the ice around the bay and then it started to rain so it was time to return to the ship. The ship moved slightly closer to the location of the bear so we could still observe them resting on the hillside.

Then it was time for our 18:30pm recap where Claudio gave us the plan for tomorrow. This was then followed by an introduction to the birds of Svalbard presentation by Miriam which included many birds that we had seen today. After this it was time for dinner, which was a wonderful plated menu designed to delight. Finally, the program was finished for the day and we could spend some time in the bar chatting with friends and making new ones or turn in for an early night ready for tomorrow.



Day 3 – 2nd August

Monacobreen, Texas Bar & Moffen Island

GPS position at 1200: 79°33.3' N, 012°28.8' E

Air Temp: 15°C Weather: Cloudy Wind: Light Sea: 1

This morning we arrived at Monacobreen, named after Albert 1st duke of Monaco, who was responsible for formulating and financing expeditions to create navigational charts for this glacier and the surrounding area for the first time in 1906. We experienced lovely calm sea conditions for our zodiac cruise along this spectacular glacier front and enjoyed being driven through the brash ice. The overcast skies gave perfect conditions for photographing the ice with the grey clouds emphasizing the blue hues of the icebergs. The glacier was very active and we witnessed numerous calving events (from a safe distance) with huge segments of ice crashing down into the water. We heard the rumbling of ice deep within the glacier, an atmospheric and awe-inspiring sound described as 'white thunder'. We marveled at the power and beauty of this gigantic frozen river of ice making its way to the sea from 14km away up in the mountains, where it began as snowflakes hundreds of years ago, falling one on top of the other.



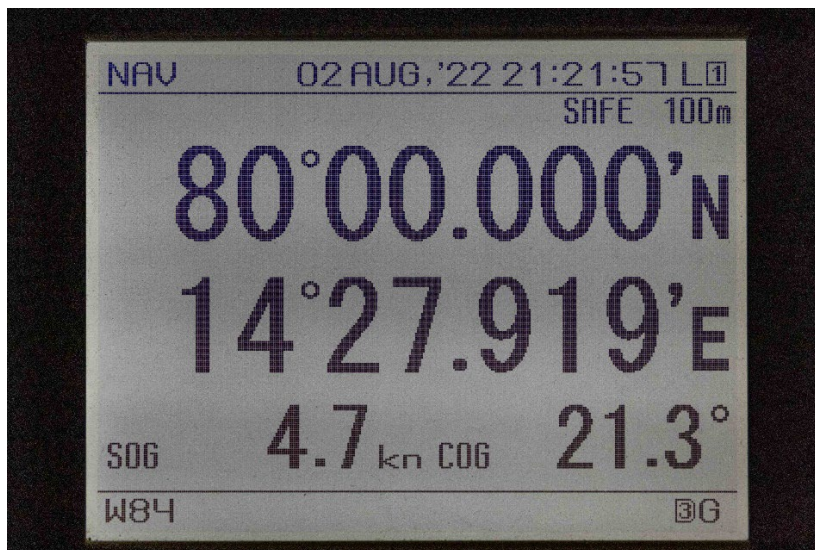
For the wildlife lovers, this morning gave good birding including **Arctic Terns**, **Black-Legged Kittiwakes**, **Northern Fulmar**, **Glaucous Gull**, **Black Guillemot** and **Little Auk**. The star of the morning for our feathered friends though were numerous **Ivory Gulls**, a much sought-after species for many guests who visit this region. These beautiful birds

have pure white plumage with a blue tinged beak with a yellow tip. They could be seen flying to and fro along the glacier front. In terms of mammals, some **Bearded Seals** were observed swimming. One was very curious and delighted guests when it swam up to our zodiacs to investigate us. We had great views of its wonderful curly whiskers!

We then returned back on board and *Ortelius* relocated to Texas Bar. On arrival, once the expedition team had established there were no polar bears around, guests were taken ashore via zodiacs. Once on land, people took part in a longer hike, medium/shorter walks or simply enjoyed the



shoreline and Texas Bar cabin. We admired the vegetation and plant life, especially the **Moss Campion, Mountain Avens** and beautiful **Polar Campion**. We avoided a territorial pair of **Arctic Skua** as best we could; they evidently had chicks in the area and were understandably defending their brood from us as a perceived threat. Alongside the flora and fauna, we enjoyed a lovely waterfall and spectacular views across the bay looking back towards Monacobreen.



To finish off the day we sailed above 80° North! We celebrated with a happy hour in the bar and were excited to pass nearby to the island of Moffen. This island is a protected **Walrus** haul out and whilst maintain the mandatory distance of 500m we were thrilled to observe at least forty of these gigantic beasts doing what they do

best; laying around together in a big pile of blubber and tusks! They are surely one of the most iconic, entertaining and captivating animals of the Arctic and we hoped we would see them again in the coming days.



Day 4 – 3rd August

Sjuøyane (Seven Islands) – Phippsøya and Parroya

GPS position at 1200: 80°40.4'N, 020°50.4'E

Air Temp: 6°C Weather: Rain Wind: E6 Sea: 2

Overnight we sailed to the northernmost islands of Svalbard – the Seven Islands! Very few people reach this remote and harsh destination. The land is truly barren with hardly any vegetation; its richness is not necessarily in the plant life, but in its fauna. The impression of hostile environment was magnified by foggy and humid weather, with dense clouds forming over the surrounding peaks.

Our Expedition Leader Claudio woke us up via the PA with an exciting announcement: a **Polar Bear** had been spotted from the bridge! The team immediately changed the original day schedule and, instead of a landing on Parryøya, at 9:00am we were ready to take a zodiac cruise



along the shore of Phippsøya, a small island named after a British explorer Constantine John Phipps, who visited it in 1773. The bear was laying behind a small trapper cabin in Isflakbukta (The Ice Floe Bay) just some hundreds of metres from us and its every smallest move was documented on thousands of our photographs. Some of us doubted before the trip began that we would see the king of the Arctic at all and now our bear count for the trip was already at three! Groups of **Walrus** also passed by us, extending their heads and tusks high above the water as they eyed us with curiosity. After yesterday's long-distance sighting at Moffen it was amazing to see walrus at closer range (but not too close, inflatable zodiacs and walrus tusks don't mix...!) We were starting to feel a bit chilly due to the wind and this, combined with it being lunch time, meant we had to say goodbye to these wonderful animals and head back to Ortelius at 11:00am.



After the lunch our ship moved towards another island of the group, Parryøya, where we planned to land to see a true Arctic desert tundra in the area of Sundvika bay. The cold winds were now reaching nearly 20 knots creating a fair bit of swell. This made embarkation to the zodiacs and the cruise journey to the bay's sandy beach a little wet and wild! At around 15:00pm we went ashore and, with the Expedition Team having formed a perimeter around the landing site, we were given the freedom to roam around. The landscape was composed of steep, sharply pointed summits with patches of ice plastered gently along their slopes, a short, crescent shaped sandy beach and a small lake. **Arctic Skuas** and **Black-Legged Kittiwakes** provided avian interest. At 16:30pm it started raining so we quickly made our way back to zodiacs. This time the cruise was even more wet and windy and each passenger received at least a splash of cold Arctic water, despite the zodiac drivers doing their very best!

Before dinner our expedition leader announced exciting plans for tomorrow: to cruise far north into the Arctic Ocean and into the pack ice! Subsequently, as part of the evening's recap, our expedition guide Hazel gave a great short lecture about Arctic pinnipeds, including walrus, giving us tips on how to identify the species we hoped to encounter during our day in the ice. At 19:00pm we enjoyed another delicious dinner, after which some of us stayed late in the bar discussing the wonderful wildlife sightings we had experienced today.

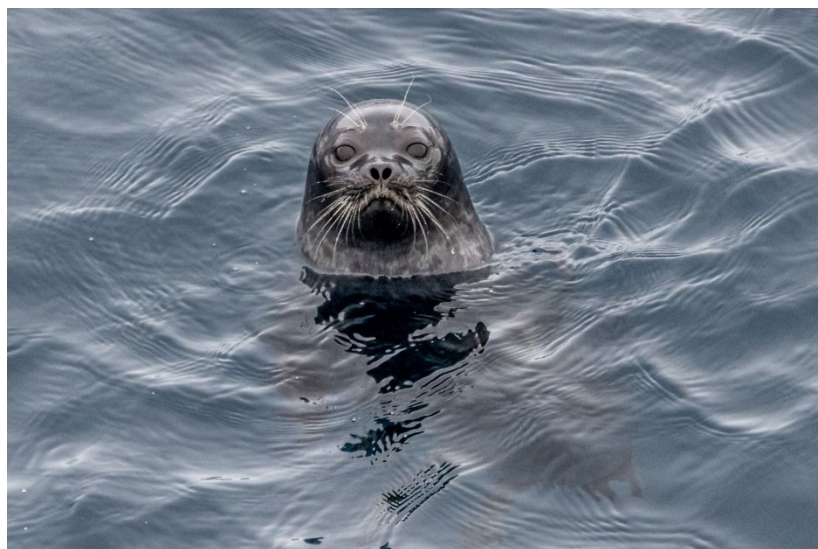
Day 5 – 4th August

A Day in the Sea Ice

GPS position at 1200: 81°45.9' N, 011°45.0' E

Air Temp: 1°C Weather: Intermittent Fog Wind: ENE4 Sea: 2

When we awoke this morning there was no ice to be seen; it was so far north that we needed to travel a little more time than expected to find it. As we travelled we first started to see small pieces and then more and more large pieces until eventually we arrived among the pack ice! It felt like we



had been transported to another world. We also began spotting numerous seals; these were **Ringed Seals** and **Harp Seals**, swimming in the water among the segments of ice. But what about the ruler of the Arctic? Where was the polar bear? We found one of those too! We were so lucky to find it out in this frozen seascape. Initially it was quite far away but with binoculars people were able to see this beautiful, well-fed **Polar Bear**. Our luck continued though

because, believe it or not, the bear walked towards our ship! When it arrived nearby Ortelius at the edge of the ice it was so curious that it took to the water started swimming to inspect us closer. We stayed at our position with the ship and marvelled as this impressive animal swam powerfully through the ice despite some large swell. After checking us out for a short time it swam away from us back towards the ice and we went to enjoy our delicious lunch.



During lunchtime the bear climbed out of the water and back onto the ice. As he or she (we could not be entirely sure of the gender) walked away it was time for a last glimpse before saying goodbye to this beautiful bear. Our wildlife sightings did not end there though, there were plenty of birds to see too. During the morning there were **Northern Fulmars**, **Black-legged Kittiwakes** and **Little Auks** flying around the ship. The avian stars of the day though were the pure white **Ivory Gull** the strikingly plumaged **Sabine's Gull**.

While cruising alongside the ice edge we saw yet more **Harp Seals** with their blackish faces and back marking which is said to resemble a harp (hence their name). At around three o'clock it was time for a hot chocolate with rum and whipped cream at the bow of the ship. Yum! Alongside enjoying the incredible views and wildlife outside, the Expedition Team offered a varied programme of lectures. Hazel gave the first talk of the day about polar bears at 10:30am and later in the afternoon, when the wind picked up and the fog came in at 16:00pm, Szymon gave a lecture about sea ice. The two lectures were very well picked, because we saw a polar bear on the sea ice!

At the end of the afternoon the fog became thicker and the bridge team skilfully navigated Ortelius back into open water, heading Southwards. After such a fantastic day we wondered what excitement and new experiences would await us tomorrow!



Day 6 – 5th August

Hingstsletta, Alkefjellet and Torellneset

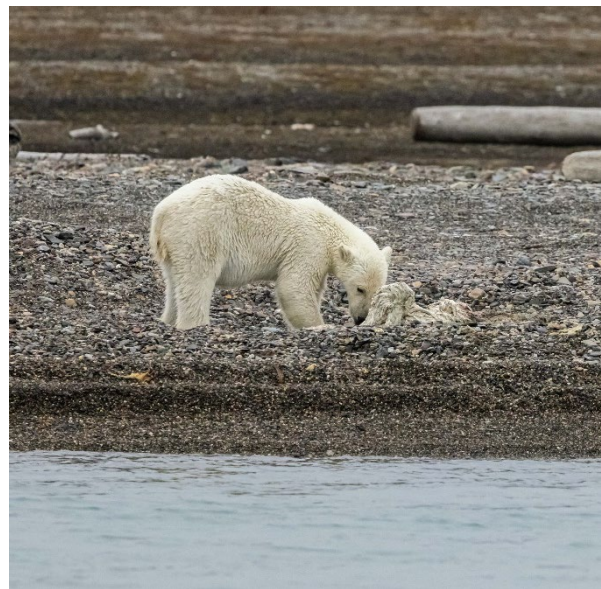
GPS position at 1200: 79°36.2'N, 018°28.6'E

Air Temp: 9°C Weather: Fog Wind: SE3 Sea: 1

Our day started earlier than usual at 6:30am with an announcement from Expedition Leader Claudio that **Polar Bears** had been spotted on the beach at an area called Hingstsletta which we were passing by! We were asked to get ready straight away so we all excitedly put on our outdoor gear and waterproofs and lined up at the gangway while the zodiacs were prepared. We were in for a great treat this morning: There were not one, not two, but six bears on the beach! A female with two large cubs were at the shore near the remains of a dead animal (most likely a walrus). The



mother and one of the cubs were resting next to each other, but the other cub was extremely active. We watched as it dug and stomped around the carcass and ate some of the flesh. Two other bears, likely another female with a cub, rested further back from the shore nearby and the sixth bear was more distant, resting in a patch of snow on the hillside. The zodiacs snaked in and out as a line so we could slowly get closer without disturbing the bears. We cruised the bears for forty-five minutes and then it was time to get back to the ship for breakfast and start the scheduled itinerary for the day.



Whilst we enjoyed our breakfast the ship was repositioned to a place called Alkefjellet, well known as one of the most beautiful sites on Svalbard and a firm favourite among guests and guides. Once again, we loaded up into our zodiacs, and approached the huge dolomite pillared cliffs. First, we passed the high waterfalls of meltwater pouring from the cliffs into the sea beside us. The spray and the sound gave an almost ethereal ambience to the whole experience.

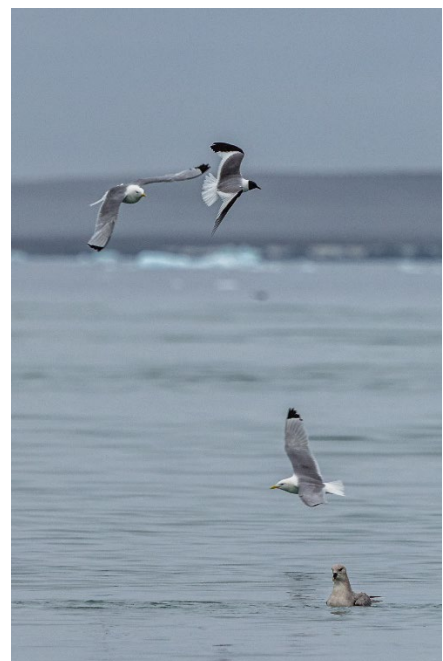
We slowly cruised the cliff face spotting the odd small group of **Brünnich's Guillemots** dotted around



the cliff face. However, this was nothing compared to what we would find around the corner. As we rounded one of the large columns first, we could hear the cacophony of bird calls coming from the cliff face. From a distance the sky looked as if it were filled with insects but as got closer the huge colony of hundreds of thousands of birds caught our eyes. As we passed along the cliff face we could see it was filled with **Brünnich's Guillemots**, **Black Guillemots** and **Glaucous Gulls**. As we continued our journey, they flew in droves over our head. Some headed down to the water and others just soaring around us. In amongst the dolomite pillars there were several green pastures where we managed to spot some **Arctic Foxes** scurrying around on the hillside. Two hours passed by rapidly and, before we knew it, it was time to go back to the ship for lunch.



Whilst at lunch, the ship was repositioned again for our next and final activity for the day. We were supposed to land at a place called Torrelneset but unfortunately the fog had come down making it impossible for the bear scouts to complete their task. So instead, we enjoyed plan B, which was a zodiac cruise of the area and of the ice calved from nearby glaciers. We spotted some **Walrus** on the beach and in the water, where they popped up to look at us! There were also some **Svalbard Reindeer** on the snow on the hillside. The top birding spot of the afternoon was two **Sabine's Gulls** on the water in amongst the icebergs. We weaved our way in amongst the ice before turning back to get back to the ship just in time for recap. Claudio gave us the plan for the next day and then we headed down for dinner full of stories of the day.





Day 7 – 6th August

Kapp Lee & Sundneset

GPS position at 1200: 78°05.2'N, 020°45.4'E

Air Temp: 11°C Weather: Cloudy Wind: NE2 Sea: 1

Our Expedition leader Claudio woke us up at 7:15am announcing weather conditions, our location and the plans for this morning. Taking a look outside we could experience what Claudio had said: dense fog was reducing the expedition team's ability to spot polar bears on our way through Freemansundet to Kapp Lee (our morning destination). Luckily, just before our scheduled arrival time the fog cleared and we could see our landing site. This was not only vital in terms of scouting for bears but also meant we could see that **Walrus** were present at the site, which is a regular haul out. Whilst we ate breakfast the expedition team launched zodiacs, leaving *Ortelius* to prepare the landing site for us to see the walrus at closer range and to scout on foot for bears to ensure our safety on land. We were desperately hoping to go ashore but the expedition



team had to evacuate after spotting a **Polar Bear** inland during their scouting. When all of the team were safely back at the shore Expedition Leader Claudio made an announcement for guests to inform them that we would be doing a zodiac cruise instead of the landing. Everyone was excited to hear that another polar bear had been spotted and were also looking forward to seeing the Walruses. We had a wonderful morning observing the magnificent wildlife of this high arctic region. It was as if the walrus were keen to make up for the fact we could not go to see them ashore; they were very curious and active, swimming just few meters away around our zodiacs. We had to actively back away from them to ensure we were not too close. After seeing those impressive tusked beasts we went to observe, at safe distance from water, the beautiful polar bear which was resting nearby.



After the cruise we came back on Ortelius just in time for lunch, as always galley team prepared for us amazing food and after just few hours we reached our next destination Russebukta. Our plans to go ashore were scuppered when the Expedition Team, during scouting, spotted the 12th **Polar Bear** of this trip! With excitement we boarded zodiacs for another cruise and all together we could see amazing landscape of dolerite islands with bear on one of them and another walrus haul out near the shore and small groups swimming around our zodiacs. We took wonderful pictures and kept amazing memories from today day. Unfortunately, we had to finish our cruise and return to the ship for dinner and daily recap, After our wonderful walrus filled day we had plenty to talk about as we

enjoyed cauliflower and chickpea curry, fish with coconut risotto or chimichurri beef (the only problem was choosing what to have out of these delicious meal choices!)



Day 8 – 7th Gåshamna & Burgerbukta

GPS position at 1200: 76°56.8'N, 015°49.0'E

Air Temp: 11°C Weather: Fog and Stormy Skies Wind: Light Sea: 0

Overnight we cruised from eastern to southern Svalbard, specifically to the Hornsund fjord in south Spitsbergen. From the early morning the sun was shining from behind clouds and stripes of fog obscuring lower elevations of nearby dramatic mountains. During breakfast, at around 8:00am, we entered the fjord and around 10:30am we were ready to embark zodiacs to explore Gåshamna (meaning 'the Goose Bay') with interesting cultural heritage remains from the whaling era and from the late 19th century Arc of Meridian expedition. A small wooden cabin (called Konstantinovka) built near the shore by the Russian scientists played a key role in understanding the shape of our planet! As much as we loved Polar Bears we were glad that none had been spotted by the Expedition Team this morning so that we could go ashore and stretch out legs! Some of us chose to go on a guided hike around the area while others decided to stay near the beach to photograph the ruins of old cabins, a blubber oven and a whale graveyard. Bones from ocean giants killed hundreds of years ago could be seen around the beach on an outwash plain of the Gåsbreen glacier, sitting deeper in the valley. Before 13:00pm, when we all gathered on the beach, the bravest of us jumped into the water in the "polar plunge"! Shortly afterwards we returned to the ship and *Ortelius* lifted anchor to cruise to the next destination.

After lunch, at around 15:15pm, the zodiacs were back on the sea to take us to one of the many stunning areas within Hornsund; a marine-terminating glacier called Paierlbreen within Burgerbukta. This fast-retreating glacier is a true climate warming victim; it has shortened by ~7 kilometres over the past 85 years. This beautiful bay also has some high vertical rockwalls with incredible



meltwater waterfalls, many small cirque glaciers on both sides and amazing geology. Some guests were lucky enough to spot **Ivory Gull** and **Icelandic Gull**, true highlights for the birders! The bay was filled with thousands of picturesque ice fragments and bergy bits: we wanted to photograph them all! We were all back onboard *Ortelius* at around 18:00pm and then it was time for EL Claudio to announce plans for tomorrow. Additionally, Miriam and Jakub, two of our guides, elaborated on flowers and glaciers of Svalbard. In the end of the recap session Claudio invited us to join the surprise prepared by our dining team – an outdoor barbecue! Food, music, beer and wine gathered us together on the ship's helipad surrounded by amazing scenery with views opening towards nearby mountains and many of the area's glaciers. The event was a great conclusion of a true expedition day.

Day 9 – 8th Ymerbukta and Colesbukta

GPS position at 1200: 78°16.1'N, 013°59.8'E

Air Temp: 14°C Weather: Cloudy Wind: Light Sea: 1

We had reached the last day of our expedition, but the fun was far from over as we still had two wonderful landings to enjoy! While we enjoyed a delicious breakfast *Ortelius* arrived at the location for our morning activity; the beautiful bay of Ymerbukta with the Esmarkbreen glacier. Our expedition guides went ashore first as usual to scout the site for polar bears by zodiac and on land. Polar bear footprints were seen in the muddy sediment near the shore, but after careful scouting no bears were sighted so we began boarding the zodiacs and heading ashore. This was a split landing meaning that whilst half of the guests went ashore the other half went for a zodiac cruise. Once ashore we were able to walk right up to the face of the lateral moraine of the glacier and even touch the glacier which was an incredible experience. We felt humbled to think that this ice had fallen hundreds of years ago at the top of the mountains as individual snowflakes and was now meeting the seawater as a huge, powerful river of ice flowing downwards under its own mighty weight.



After taking part in both activities, ashore and by zodiac, it was time to return to *Ortelius* for lunch, during which the bridge team repositioned the ship for the afternoon's activity: going ashore at Colesbukta. We enjoyed a hike to see the remains of the derelict buildings which were once the homes and workplaces of the miners and their families who inhabited this historic mining settlement. Alongside the historical interest, we also enjoyed the flora of this botanically diverse site and the wildlife, such as **Ringed Plover** and **Brent Geese** and **Svalbard Reindeer**. After a couple of hours ashore it was time to return to *Ortelius* for our final evening meal together, but before that it was time for the last recap!

Captain Mika joined guests and the Expedition Team in the bar for a final celebratory drink as we raised a glass together to toast the end of a brilliant trip. We looked forward to sharing tales of our expedition with family and friends back home and the slideshow, created by Expedition Team photographer Werner was the perfect end to the final recap. We reflected upon our experiences and remembered all of the special moments we had shared throughout our trip. Having visited Svalbard, we have seen first-hand that this Arctic archipelago is an incredible, beautiful, wilderness and a unique, precious part of our planet.



Day 10 – 9th August

Disembarkation: Longyearbyen

GPS position at 0800: 78°13.7' N, 015°36.1' E

Air Temp: 14°C Weather: cloudy Wind: Light Sea: 1

Our fantastic expedition trip came to an end today. For some, disembarkation took place in the small hours of the morning as they had a very early flight to catch. Others were able to stay on board to enjoy a final breakfast with us before departing. The expedition team and helpful crew had taken care of luggage, so all that remained was to say our goodbyes: to our newly made friends, fellow travellers and everyone on board Ortelius whom we had come to know over the past nine days.

Some of us had time left to enjoy exploring Svalbard after leaving the ship whilst others had to travel home. Regardless, we all left with many great memories, treasured of photographs of our wonderful experiences and perhaps new friends made too, for future travel adventures!



*Thank you all for joining us on this remarkable adventure;
for your great company, good humour, interest and enthusiasm.
We hope to see you again in the future, wherever that might be!*

**Total distance sailed on our voyage: 950 nautical miles
Furthest North: 81°45.9' N, 11°45.1' E**

**On behalf of
Oceanwide Expeditions,
Captain Mika Appel,
Expedition Leader Claudio Ghiglione,
Hotel Manager Volodymyr Cherednychenko
and all the crew and staff,
it has been a pleasure travelling with you!**



Claudio Ghiglione - Expedition Leader



Claudio was born in Italy in 1983. He is a marine ecologist specialised in polar regions, expedition guide and nature photographer.

Interested in science and nature since he was very young, he graduated first in *Marine Environmental Sciences* (BA) and then in *Marine Science* (MA). In March 2017 he obtained a *PhD in Earth, Environmental and Polar Sciences* run in cooperation with the Italian National Antarctic Museum (Italy) and the British Antarctic Survey in Cambridge (UK).

For several years he worked as a polar researcher focusing his work mainly on the South Pole (Antarctica); his objective is to analyse and evaluate information used for ecological modelling and possible future scenarios following global warming. During his academic career, he actively takes part in some scientific expeditions both in Arctic and in Antarctica in cooperation with Norway and England.

His passion for travel, mainly to cold and often inhospitable places, and his career as a photographer led him to travel a lot, creating and managing – often in complete autonomy – itineraries and logistics. In 2017 – thanks to his professional experience, the skills acquired over the time and the need to spend more time on the field – he starts working full time as a guide Oceanwide.

Specialised in nature, scientific and travel photography, Claudio uses his photos as a means of telling stories to draw attention mainly to his main subjects, namely animals, nature and environment. In the 2019 he published his first book 'Polar Lights' with whom he shares the passion for nature photography.

George Kennedy – Assistant Expedition Leader



George is an anthropologist and political scientist currently studying at the Australian Institute of Marine and Antarctic Science. He has a keen interest in cultural identity and contemporary geopolitics in the polar regions. His current research focusses on the complex dynamics between indigenous, scientific and political stakeholders in their pursuit of environmental protection in Antarctica and the Arctic.

In his practice as an anthropologist, George has worked predominantly with community development organisations in Latin America. His work has focussed on identifying collaborative solutions to support environmental conservation and sustainable tourism in Patagonia and the Amazon basin.

Prior to his work in anthropology, George served as a paramedic in Australia, still occasionally throwing on the uniform to work with Ambulance Victoria in Melbourne.

Second only to expedition cruising, George's great passion is motorcycle travel. He has ridden from Mongolia to India, around Australia, and most recently from Patagonia to Mexico on his Kawasaki KLR650.

Miriam Vermeij – Expedition Guide



During her youth she travelled a lot with her parents and sister in Europe. Miriam developed an interest in nature at a young age and lots of time was spent outdoor, exploring local insects and plants. Following her interests, she followed an environmental science study and got a degree with a specialisation on soil pollution. Nowadays she is a self-employed environmental planning officer.

From 1999 the travelling outside Europe started and after a trip to South America, the Falklands and Antarctica in 2006 she got the passion for the poles. The first contact with the Arctic was in 2011 and after another trip in 2013 she came back as field assistant on the Dutch polar expedition (SEES) in 2015 and to the Dutch polar station in Ny Alesund in 2016. Since 2017 she has been guiding in the Arctic, followed by the Antarctic in 2018.

In Holland Miriam is a nature guide since 2003. First in the local forest and since 2008 also in one of the largest national parks in Holland: De Biesbosch. There she is guiding school kids and adult groups on walking and boating trips. She is also part of the board that manages the local forest.

Werner Kruse - Expedition Guide



Werner Kruse is a well-seasoned traveller and an experienced filmmaker, photographer and expedition guide. He has worked on numerous international productions and produced travel documentaries, including wildlife and expedition documentaries in Africa. His film, *The Boy from the Wild*, premiered at the Royal Geographic Society in London as well as the Wildlife Conservation Film Festival in New York City. Currently the film is available on Amazon Prime Video.

After completing his studies, he travelled extensively, making documentaries all over the world. He explored places such as Petra, Machu Picchu, Great Barrier Reef and Rapa Nui, Spitsbergen, Iceland as well as his favourites, the Hawaiian and Tahitian Islands. He is currently based in Cape Town, South Africa, working on TV shows, documentaries, commercials and corporate productions. He frequently travels abroad for various video and photographic assignments.

Werner is extremely passionate about conservation, particularly wildlife and the ocean and supports various environmental causes. His work depicting Gentoo penguins in Antarctica was featured by National Geographic, and his annual return to Antarctica remains a highlight for him. His travels have taken him to 112 countries, enabling him to capture a richly diverse spectrum of images.

Jakub Małecki - Expedition Guide

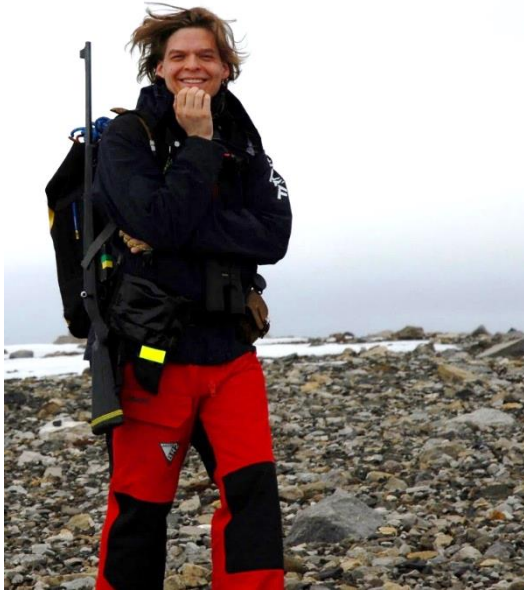


Jakub was born in Poland in 1985. As a kid, he dreamed of becoming an astronaut, but later his focus shifted towards astronomy. Eventually, he obtained a masters and doctoral degree in Earth Sciences and became a glaciologist. As he puts it, researching remote, glacier-covered regions is almost like landing on another planet, so the childhood dream has partly come true.

Since 2007 Jakub has been studying glaciers across the world, either directly or remotely, i.e., using satellite or aerial images. His main interest is how glaciers respond to changing climate in different environmental settings. Most of his glaciology work Jakub carries out on Svalbard, the arctic archipelago located midway between Norway and the north pole, where he fell in love with ice. Since then, Jakub joins expeditions to remote regions on an every-year basis.

Jakub considers public education by the science community at least as important as delivering new knowledge, so he is a keen glaciology communicator, book author and a frequent guest to the Polish media outlets and science festivals where he comments on polar and mountain affairs. Apart from glaciology, Jakub is a huge enthusiast of planetary sciences and space exploration and tries to play the ukulele.

Szymon Niezabitowski - Expedition Guide



Szymon was born in Cracow, Poland. He studied Biology and Geography in Cracow where he received his graduate degree in “Faculty of Biology and Earth Sciences”. His final thesis was about Volcanic Soils on Iceland.

After he finished his studies, he joined Polish Academy of Sciences and worked for the Institute of Systematics and Evolution of Animals, where he was a guide and researcher on exotic animals.

Szymon began guiding in the Arctic in 2016 on Spitsbergen and since then has also led Orca whale trips in North Norway.

From the earliest years of his life he is a passionate naturalist with a special interest in the geography and the wildlife of the higher latitudes.

Hazel Pittwood - Expedition Guide



Hazel grew up in the county of Dorset on the South coast of the UK. A childhood spent pond dipping, bug hunting and exploring the countryside and coast nurtured her love of the natural world.

She has worked in practical conservation and community engagement roles for a variety of habitats, including heathland and coastal nature reserves. Hazel also has experience surveying rare protected species and is a trained wildlife rescue volunteer and marine mammal medic

Whilst she is broadly learned about the natural world, Hazel has specialised in marine mammals and seabirds since 2014. At that time she began volunteering as a marine mammal and seabird surveyor, collecting sightings data regarding these animals for UK based conservation charities. In 2017 she worked on a passenger ship travelling between the UK and Spain across the Bay of Biscay for six months, delivering talks and leading wildlife watching sessions out on deck.

Hazel has been working as a guide and lecturer on cruise ships for over three years. This role has taken her to Norway and Svalbard, Iceland, Alaska, Canada, the Faroe Islands, the Canary Islands, the Caribbean and Central America. She is a World Cetacean Alliance certified responsible whale watching guide, championing the highest standards of wildlife experiences.

The polar regions host an incredible diversity of seabird and marine mammal species and Hazel looks forward enhancing your encounters with these incredible animals with her knowledge, skills and enthusiasm.

Tiphanie May - Expedition Guide



Tiphanie is an 8th generation Falkland Islander living in Stanley. She was raised on a small group of islands called Speedwell Island Group, owned and worked by her parents as a sheep farm and family crab business.

Tiph was raised surrounded by Falkland's wildlife with her family island boasting rookeries of Magellanic penguins, Gentoo penguins as well as several other breeding birds. The islands also include haul outs of South American sealions and elephant seals. Surrounded by all this wildlife it was of no surprise that she found nature

fascinating. From the penguin couple that lived under her house to the wonderful variety of creatures found in the crab pots, marine life was a theme. This led to her to travel to the UK at 16 to study to be a marine biologist.

Tiph spent 6 years in the UK studying to get her BSc (HONS) Marine Biology and MSc in Marine Biology. Using her holidays to volunteer in the Falklands for various conservation projects to gain experience. Upon completing her studies, she joined the Government Fisheries Department, spending 200 days per year at sea monitoring seabird activity and collecting research material. The sea has been a big part of her life, from a young age she worked to haul crab pots with her father's boat. Later she went on to work for an experimental sustainable fish farm which allowed her to get her RYA qualifications in Power Boat. Tiph currently works full time operating a small boat in the Falklands.

Tiphanie started working in the tourist industry at the age of 23. Having grown up with no roads her whole life, 4X4 tour driving just made sense. Tiph has worked to provide a variety of tours such as hiking, 4X4 and penguin colony visits. In 2018, Tiphanie was offered the amazing opportunity to go to Antarctica and South Georgia with Oceanwide as guide. She fell in love with the scale of the landscape and has never looked back.

Sjoerd van der Knokke – Ship's doctor



Sjoerd grew up in a small village just below Rotterdam in the Netherlands. After highschool he decided to study Chemistry in Amsterdam. But soon he found out that he rather worked with people than with chemicals. He quit chemistry and started Medical studies at the Radboud university in Nijmegen.

After his Medical studies he has worked in the Intensive Care and the Emergency department, before specializing in General Practice. He is currently working as a doctor for the Dutch military.

Sjoerd is also a freelance photographer. In 2019 he decided to start professional photography training. In his work he focuses on portrait and studio photography, but he also loves nature and wildlife photography.

Besides his work as a doctor and a photographer. He has a passion for travelling and diving. His favorite parts of the world are Central Asia and Africa. However, when he went on his honeymoon to Antarctica he fell in love with this beautiful continent and directly knew he needed to go back. "The feeling you get when you see the first iceberg is an unforgettable experience."

As the father of a young family it is a bit harder for him to be away for longer periods of time, but being surrounded by the stunning Arctic and Antarctic scenery compensates it all.

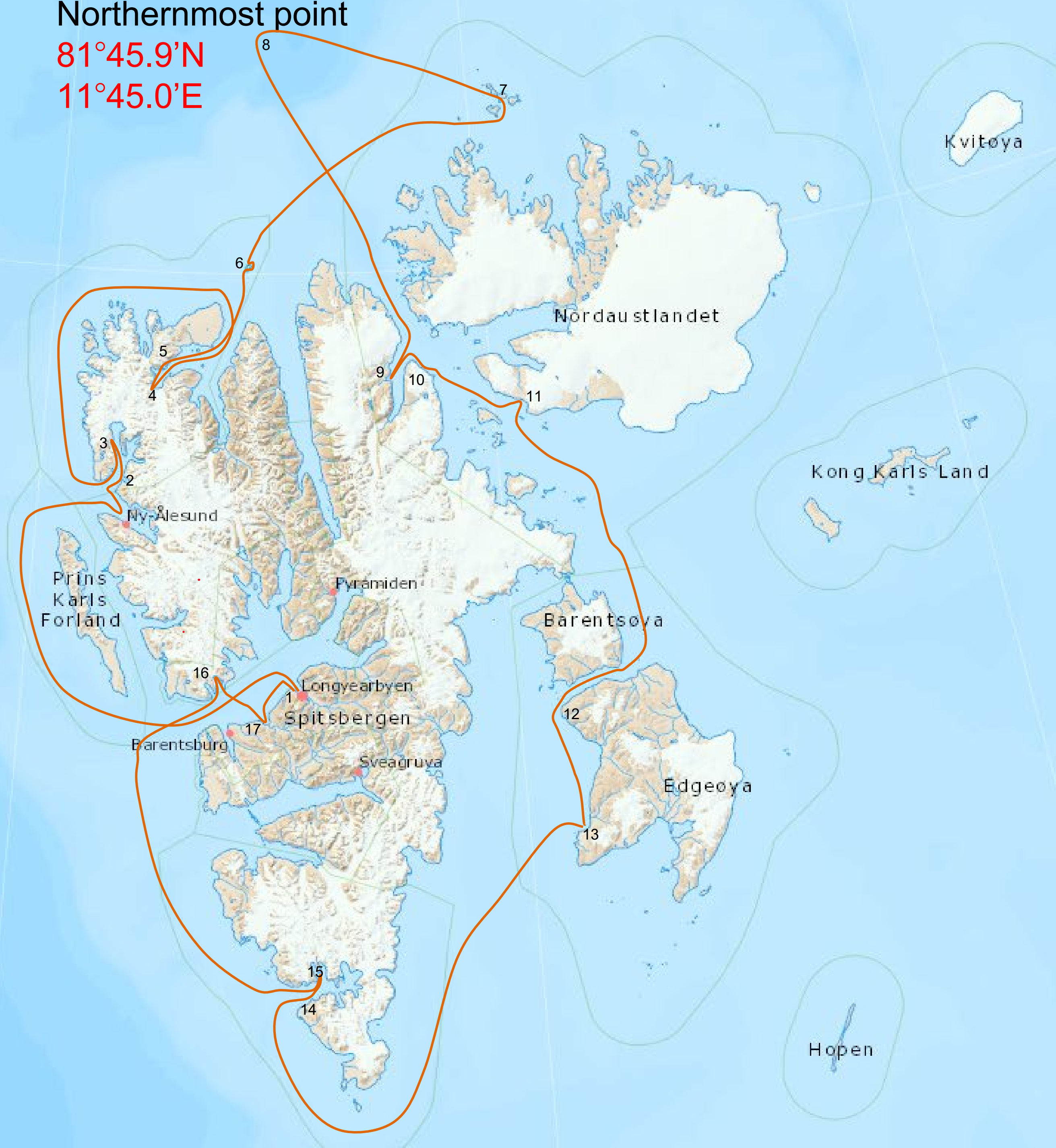
Ortelius OTL10-22

1. Longyearbyen
2. Fjortende Julibukta
(14th July Bay)
3. Signehamna
4. Monacobreen
5. Texas Bar
6. Mofen Island
7. Seven Islands (Sjuøyane):
Phippsøya and Parryøya
8. Northernmost point:
in the sea ice
9. Hingslsletta
(*six polar bears*)
10. Alkefjellet
11. Torrelneset
12. Kapp Lee
13. Sundneset
14. Gåshamna
15. Burgerbukta
16. Ymerbukta
17. Colesbukta

Northernmost point

81°45.9'N

11°45.0'E



Birds and Mammals sighting list: OTL 10 - 31st July - 9th August 2022

BIRDS

English Name	Latin	31-jul	1-aug	2-aug	3-aug	4-aug	5-aug	6-aug	7-aug	8-aug
Red-throated diver	<i>Gavia stellata</i>						x			
Northern Fulmar	<i>Fulmarus glacialis</i>	x	x	x	x	x	x			x
Pink-footed Goose	<i>Anser brachyrhynchus</i>						x			
Barnacle Goose	<i>Branta leucopsis</i>						x			
Brent Goose	<i>Branta bernicla</i>									x
Common Eider	<i>Somateria mollissima</i>		x	x	x		x	x	x	
Ringed Plover	<i>Charadrius hiaticula</i>									x
Purple Sandpiper	<i>Calidris maritima</i>			x						x
Arctic Skua	<i>Stercorarius parasiticus</i>		x	x	x		x			x
Great Skua	<i>Stercorarius skua</i>		x	x						
Sabine's Gull	<i>Xema sabini</i>					x	x			
Glaucous Gull	<i>Larus hyperboreus</i>	x	x	x	x	x				x
Black-legged Kittiwake	<i>Rissa tridactyla</i>	x	x	x	x	x			x	x
Ivory Gull	<i>Pagophila eburnea</i>			x	x	x			x	
Arctic Tern	<i>Sterna paradisaea</i>		x	x	x	x		x	x	x
Brunnich's Guillemot	<i>Uria lomvia</i>		x	x	x		x			x
Black Guillemot	<i>Cephus grylle</i>		x	x	x		x			x
Little Auk	<i>Alle alle</i>		x	x	x	x	x			
Atlantic Puffin	<i>Fratercula arctica</i>		x		x		x			x
Snow Bunting	<i>Plectrophenax nivalis</i>			x						x

MAMMALS

English	Latin	31-jul	1-aug	2-aug	3-aug	4-aug	5-aug	6-aug	7-aug	8-aug
Walrus	<i>Odobenus rosmarus</i>		x	x	x	x	x	x		
Bearded seal	<i>Erignathus barbatus</i>		x	x	x		x			
Ringed seal	<i>Phoca hispida</i>					x				
Harp seal	<i>Pagophilus groenlandicus</i>		x		x	x				
Hooded seal	<i>Cystophora cristata</i>				x					
Minke Whale	<i>Balaenoptera acutorostrata</i>									x
Blue Whale	<i>Balaenoptera musculus</i>						x			
Fin Whale	<i>Balaenoptera physalus</i>				x					
Humpback Whale	<i>Megaptera novaeangliae</i>						x			
Polar Bear	<i>Ursus mantimus</i>		x		x	x	x	x	x	
Arctic Fox	<i>Alopex lagopus</i>		x							
Spitsbergen Reindeer	<i>Rangifer tarandus platyrhynchus</i>		x				x	x	x	x



Around Spitsbergen, in the realm
of Polar Bear & ice
Sunday 31st July 2022
Longyearbyen - Embarkation

WELCOME ABOARD!

Luggage will be delivered to your cabin. Please make check to make sure you have received all your luggage. If you have any extra luggage in your cabin – please notify a crew member.

**** Tea and coffee are always available in the bar on deck 6 ****

- ±1730 **Welcome & safety briefing** - Please join us in the **lecture room** (deck 3, forward) for a welcome to the voyage, followed by a **mandatory** safety briefing and lifeboat drill.
- ±1800 **Departure** from Longyearbyen.
The bridge will be closed during these operations.
- 1830 **Captain's Welcome and AECO briefing** – Please join us in **the bar** (deck 6) for a brief introduction to our expedition around Spitsbergen.
- 1930 **Dinner** is served in the **dining room** (deck 4)
- ±2045 **Muck Boots** - We will hand out your muck boots from the **lecture room** (deck 3 forward) – Please listen for announcements – we will call you in groups.

We will sail into open sea this evening and the ship may move – please secure your belongings and be careful when moving around the ship.

- 0715 **Wake up call** – Good Morning
- 0730 **Breakfast** is served in the **dining room** (deck 4).
- 0845 **Voyage Introduction & Mandatory briefings** – Please join the expedition team in the **lecture room** (deck 3) for our introduction to the voyage and team, as well as the mandatory Zodiac and Polar Bear Safety briefings.

This morning we hope to enjoy zodiac cruise in 14 Juli bukta; a beautiful glacial bay with opportunities to spot puffins and reindeer, as well as cruise icebergs.

- ±1100 **14 Juli Bukta Zodiac cruise** – Please listen for announcements – we will call you by deck to board the zodiacs at the **zodiac boarding area** (deck 4).
- 1300 **Lunch** is served in the **dining room** (deck 4).

This afternoon we aim to visit Signehamna; a landing site featuring beautiful landscapes characteristic of Western Svalbard, as well as the remains of a German WWII weather station. Beyond history, we also hope to spot red-throated divers, skuas, reindeer and perhaps even Arctic Fox.

- ±1530 **Signehamna Landing** – Please listen for announcements – we will call you by deck to board the zodiacs at the **zodiac boarding area** (deck 4).
- 1900 **Daily Recap** - Please join the expedition team in the **lounge** (deck 6) for our daily recap and briefing for tomorrow's activities.
- 1930 **Dinner** is served in the **dining room** (deck 4).



Around Spitsbergen, in the realm
of Polar Bear & ice
Tuesday 2nd August 2022
Monacobreen & Texas Bar

0715 **Wake up call** – Good Morning

0730 **Breakfast** is served in the **dining room** (deck 4).

This morning we aim to take you on a zodiac cruise at Monacobreen – a large glacier in the Northwest of Spitsbergen. Here we have great opportunities to cruise through ice, past icebergs and spot wildlife and birds.

0900 **Monacobreen Zodiac Cruise** – Please listen for announcements – we will call you by deck to board the zodiacs.

1230 **Lunch** is served in the **dining room** (deck 4).

This afternoon we hope to land at Texas Bar – a great landing for hiking, as well as viewing the surrounding scenery and vegetation.

±1430 **Texas Bar Landing** – We will call you in groups to board the zodiacs;
~ 1430 – Long walkers please come to the zodiac boarding area.
~ 1445 – Medium and short walkers please come to the zodiac boarding area.

Please listen for announcements for zodiac boarding – times may vary.

1830 **Daily Recap** - Please join the expedition team in the **lounge** (deck 6) for our daily recap and briefing for tomorrow's activities.

1900 **Dinner** is served in the **dining room** (deck 4).



Around Spitsbergen, in the realm
of Polar Bear & ice
Monday 03rd August 2022
Seven Islands
Parryoya & Phippsoya

0715 **Wakeup call** – Good Morning

0730 **Breakfast** is served in the **dining room** (deck 4).

This morning we hope to land at Parryoya, our northernmost landing of the voyage. This morning's activities will be a perimeter landing, allowing you to walk freely between guides. During this landing, we hope you will support our beach clean-up, Parryoya being a regular site for ocean plastic.

0900 **Parryoya Landing** – Please listen for announcements – we will call you by deck to board the zodiacs.

~ 0900 – We welcome the BLUE group to board zodiacs

~ 0910 – We welcome the RED group to board zodiacs

1230 **Lunch** is served in the **dining room** (deck 4).

This afternoon we aim to zodiac cruise Phippsoya, exploring the largest of the seven islands. During our cruise, we hope to see birds, walrus and, perhaps, the king of the Arctic – the polar bear!

1400 **Phippsoya Zodiac Cruise** –Please listen for announcements – we will call you in groups to board the zodiacs.

~ 1400 – We welcome the RED group to board zodiacs

~ 1410 – We welcome the BLUE group to board zodiacs

1830 **Daily Recap** - Please join the expedition team in the **lounge** (deck 6) for our daily recap and briefing for tomorrow's activities.

1900 **Dinner** is served in the **dining room** (deck 4).



Around Spitsbergen, in the realm
of Polar Bear & ice
Thursday 4th August 2022
Sea Ice Day

At approximately 7am we will sail into the sea ice. We will spend today exploring the ice and searching for wildlife!

- 0745 **Wakeup call** – Good Morning
- 0800 **Breakfast** is served in the **dining room**.
- 1030 **Polar Bears** – Please join Hazel in **the bar** for her presentation on our king of the Arctic, the polar bear.
- 1230 **Lunch** is served in the **dining room**.
- 1600 **Sea Ice** – Please join Szymon in **the bar** for his lecture exploring how changes in the far northern ocean will impact our global ecosystem.
- 1830 **Daily Recap** - Please join the expedition team in **the bar** for our daily recap and briefing for tomorrow's activities.
- 1900 **Dinner** is served in the **dining room**.



Around Spitsbergen, in the realm
of Polar Bear & ice
Friday 5th August 2022
Alkefjellet & Torellneset

0745 **Wakeup call** – Good Morning

0800 **Breakfast** is served in the **dining room** (deck 4).

This morning we aim to zodiac cruise at Alkefjellet; a large Brunnich's Guillemot colony, with chances of spotting more bird species and arctic fox.

0930 **Alkefjellet Zodiac Cruise** – Please listen for announcements we will call you by deck to board the zodiacs
~ 0930 – We welcome the BLUE group to board zodiacs
~ 0940 – We welcome the RED group to board zodiacs

1300 **Lunch** is served in the **dining room** (deck 4).

This afternoon we hope to land at Torellneset; a small sandy beach on the south-eastern shore of the Hinlopen strait, usually home to many walruses. We will offer long & medium hikes, as well as a short photography walk.

1630 **Torellneset Landing** – Please listen for announcements we will call you in groups to board the zodiacs.
~ 1630 – We welcome long hikers
~ 1640 – We welcome medium hikers and photographers

1915 **Daily Recap** - Please join the expedition team in the **lounge** (deck 6) for our daily recap and briefing for tomorrow's activities.

1930 **Dinner** is served in the **dining room** (deck 4).



Around Spitsbergen, in the realm
of Polar Bear & ice
Saturday 6th August 2022
Kapp Lee & Sundneset

0715 **Wake up call** – Good Morning

0730 **Breakfast** is served in the **dining room**.

This morning we hope to land at Kapp Lee – the site is home to beautiful Arctic tundra, a hunter cabin and (sometimes) walrus.

0900 **Kapp Lee Landing** – Please listen for announcements – we will call you by colour groups to board the zodiacs.

~ 0900 – We welcome the RED group to board zodiacs

~ 0910 – We welcome the BLUE group to board zodiacs

1230 **Lunch** is served in the **dining room**.

This afternoon we hope to land at Sundneset, a stunning tundra with beautiful views of the straight and, often, Svalbard reindeer.

±1430 **Sundneset Landing** – Please listen for announcements – we will call you by colour groups to board the zodiacs.

~ 1430 – We welcome the BLUE group to board zodiacs

~ 1440 – We welcome the RED group to board zodiacs

1830 **Daily Recap** - Please join the expedition team in **the bar** for our daily recap and briefing for tomorrow's activities.

1900 **Dinner** is served in the **dining room**.



Around Spitsbergen, in the realm
of Polar Bear & ice
Sunday 7th August 2022
Hornsund
Gashamna & Burgerbukta

0745 Wakeup Call

0800 **Breakfast** is served in the **dining room**.

This morning we aim to land at Gashamna – one of Svalbard’s oldest whaling stations. We will do a perimeter landing to view the cultural remains and surrounding flora. We also hope to offer a polar plunge. Please wear your swimming trunks under your clothes. Towels will be provided.

1045 **Gashamna Landing** – Please listen for announcements – we will call you by colour groups to board the zodiacs.
~ 1045 – We welcome the BLUE group to board zodiacs
~ 1055 – We welcome the RED group to board zodiacs
~1230 – Polar Plunge!

1300 **Lunch** is served in the **dining room**.

This afternoon we hope to zodiac cruise Burgerbukta – a beautiful fjord within Hornsund, with towering mountains, waterfalls, and icebergs.

±1530 **Burgerbukta Zodiac Cruise** – Please listen for announcements – we will call you in colour groups to board the zodiacs.
~ 1530 – We welcome the RED group to board zodiacs
~ 1540 – We welcome the BLUE group to board zodiacs

1830 **Daily Recap** - Please join the expedition team in **the bar** for our daily recap and briefing for tomorrow’s activities.

1900 **A special Arctic Dinner** is served



Around Spitsbergen, in the realm
of Polar Bear & ice
Monday 8th August 2022
Isfjord
Ymerbukta & Coles Bay

0715 Wake up call – Good morning.

0730 **Breakfast** is served in the **dining room**.

This morning we aim to land and zodiac cruise at Ymerbukta, a stunning glacier near the mouth of Isfjord. We plan to offer both a zodiac cruise and a walk to the glacier front.

±0845 **Ymerbukta Landing & Zodiac cruise –**
~ 0845 – We welcome the BLUE group to board zodiacs
~ 0900 – We welcome the RED group to board zodiacs

The BLUE group will go ashore first to visit the glacier, whilst the RED group will enjoy a zodiac cruise. The groups will then swap mid-morning so all passengers will enjoy both a landing and zodiac cruise.

1230 **Lunch** is served in the **dining room**.

This afternoon we hope to land at Coles Bay, the heart of former soviet mining operations in Isfjord. During our landing we will enjoy many historical buildings, as well as, hopefully, reindeer and Arctic Fox.

±1530 **Coles Bay Landing –** Please listen for announcements
~ 1530 – We welcome the RED group to board zodiacs
~ 1540 – We welcome the BLUE group to board zodiacs

1830 **Captains Farewell & Slideshow** - Please join the expedition team in **the bar** for our final recap and a farewell from the Captain.

1900 **Dinner** is served in the **dining room** – Bon Appetit!

±2100 We will collect your **muck boots** in the **lecture room** on deck 3.

22:00 **If you are departing the vessel at midnight** for an early morning flight, please leave your **luggage** outside your room before 2200 for collection.

0700 **Wakeup Call**

0715 All remaining passengers, please leave your **luggage** outside your room for collection and transfer to the pier before 0715.

0730 **Breakfast** is served in the dining room.
Please leave your large/check in luggage outside your cabin before going to breakfast - we will take it to the pier for you.

0900 **Disembarkation** – Time to say goodbye! Please make your way to the gangway to disembark Ortelius.

If you are staying in town, please pick up your luggage from the pier and take it with you.

If you are flying out in the afternoon, please ensure your luggage has a green ribbon on and leave it at the pier – this will be transported to the airport for you.

A bus to the airport has been arranged to take you to the airport – it will depart from the town centre (where it drops you off) at 1130.

On behalf of the Captain and crew we thank you for sailing with us and hope you have enjoyed your voyage with us aboard Ortelius.

Safe travels home and we hope to sail with you again!