



# OCEANWIDE

EXPEDITIONS

## Around Spitsbergen In the realm of Polar Bears and Pack Ice M/V Ortelius 9<sup>th</sup> August 2022 –18<sup>th</sup> August 2022



M/V *Ortelius* was named after the Dutch cartographer Abraham Ortelius (1527-1598) who published the first modern world atlas, the *Theatrum Orbis Terrarum* (Theatre of the World) in 1570. MV *Ortelius* was built in 1989 in Gdynia, Poland, as a research vessel for the Russian Academy of Science and was named *Marina Svetaeva*. In 2011 she was purchased by Oceanwide Expeditions. The vessel was re-flagged and renamed *Ortelius*. Now the ship is sailing as a 108-passenger vessel. *Ortelius* is 91 m long, 17,6 m wide and has a maximum draft of 5,80 m, with an Ice Strength rating of UL1/1A, top speed of 12 knots and one diesel engine generating 3200 kW.



# Captain Ernesto Barria (Chile)

and his international crew of 52 (15 Nationalities)

*Including*

First Officer:	<b>Mladen Svic</b>	[Croatia]
Second Officer:	<b>Mikael Svedburg</b>	[Sweden]
Third Officer:	<b>Warren Villanueva</b>	[Phillipines]
Chief Engineer:	<b>Guntis Dizbite</b>	[Latvia]
Hotel Manager:	<b>Volodymyr Cherednychenko</b>	[Ukraine]
Head Chef:	<b>Heinz Hacker</b>	[Austria]
Sous Chef:	<b>Ivan Ivanovic</b>	[Serbia]
Sous Chef:	<b>Norman Estrada</b>	[Philippines]
Ship's Physician:	<b>Joris Uijt de Haag</b>	[Netherlands]
Expedition Leader:	<b>Claudio Ghiglione</b>	[Italy]
Assist. Expedition Leader:	<b>George Kennedy</b>	[Australia]
Expedition Guide:	<b>Miriam Vermeij</b>	[Netherlands]
Expedition Guide:	<b>Werner Kruse</b>	[South Africa]
Expedition Guide:	<b>Jacob Malecki</b>	[Poland]
Expedition Guide:	<b>Julia Angermeier</b>	[Germany]
Expedition Guide:	<b>Hazel Pittwood</b>	[England]
Expedition Guide:	<b>Tiphonie May</b>	[Falkland Islands]

**We welcome you onboard!**

# Day 1 – August 09<sup>th</sup>

## Embarkation: Longyearbyen

GPS position at 1600: 78°14.1'N, 015°37.8'E

Air Temp: 14°C Sea Temp: 1°C Weather: cloudy Wind: Light Sea: 1



Today was the day! Our long-awaited Arctic adventure was about to begin (a few years wait for some of us!) our story begins in Longyearbyen, the largest settlement in the Arctic Archipelago of Svalbard, where it was time to board *M/V Ortelius*, the ship that would be our home for the next nine days. What would we see on our travels? We could only guess at this stage, but the smiles on the faces of guests as they arrived showed the excitement everyone was feeling.

It was a little bit of a cloudy day alongside the pier in Longyearbyen and at 16:00pm

guests arrived ready to board for our epic trip. The expedition staff waited on the pier to welcome us aboard and assist with our luggage before guiding us to reception to check in. We had a little time to settle in and get our bearings on board the vessel whilst the bridge team made preparations for the ship to depart from the pier.

With everyone aboard, we were called to the lecture room to attend the first of our mandatory briefings; a ship safety briefing from the chief officer and house rules from the assistant hotel manager. The chief officer instructed everyone on what to do in an emergency and how to recognise the various alarms. This included the instructions on what to do in the case of an abandon ship alarm including how to put on our emergency life jackets. On completion of the briefings, we took part in an abandon ship drill and gathered



at our assigned muster stations on the sounding of the alarm.

Then it was time for the Captain's welcome and our second briefing of the evening. We all enjoyed raising a glass of our chosen beverage in celebration of starting

the voyage whilst Captain Ernesto Barria introduced himself and welcomed everybody. It was then time for dinner so we made our way to the restaurant on deck four for the first time. A delicious dinner buffet awaited us with a variety of dishes prepared by Head Chef Heinz and his galley team, served by our friendly dining room staff. After dinner we had some free time to explore the ship and wander the decks where we spotted our first wildlife. This included a couple of **Minke Whales**, four **Fin Whales** lunge-feeding and even our very first **Polar Bear**!!! What a start!!!! Now it was time to head to our cabins to get a good night of rest before our first full day of the trip tomorrow.

## Day 2 – August 10<sup>th</sup>

### Lilliehöökreen and Fjortende Julibukta (14<sup>th</sup> of July)

GPS position at 1200: 79°09.6' N, 011°40.5' E

Air Temp: 13°C Weather: cloudy Wind: Light Sea: calm

We woke up on our first full day of expedition to our expedition leader, Claudio's wake up call, reminding us to get up and seize the day! We started the day with a hearty breakfast to get us going, then we wrapped up warm and headed out onto the decks. Overnight the ship had taken us to a huge glacier by the name of Lilliehöökreen whose front spanned the entire edge of the bay. We spent about two hours watching the glacier, we saw some small calvings and lots of **Arctic Terns** flying around. Then it was time to get to the serious business of safety briefings.

We started first in the lecture room with the zodiac and polar bear briefings. We were taught how to enter and exit the zodiacs safely and how to put on our zodiac life jackets. We then relocated to the bar for an AECO video on the rules of behaviour when we are ashore in the Arctic. Finally with all our safety briefings completed it was time for lunch and we were ready to start our expedition activities. Whilst we were at lunch the ship was repositioned at a new location called Julibukta (14<sup>th</sup> July). Here we were supposed to have our first landing but our second **Polar Bear** was spotted nearby so we went for a zodiac cruise to have a look at him/her instead!



We all loaded into the zodiacs for the first time, our guides masterfully navigating us away from the ship. First, we stopped by some wonderful bird cliffs and got our first sighting of Atlantic puffins. Several of these beautiful birds were roosting in

the cliff face and we floated around for sometime watching them go about their day. Then we worked our way down towards the glacier front, the brash ice thickening as we got closer. We weaved in and out of the bigger pieces of ice until we came up to the looming ice cliff, marbled blue and white in unimaginable shapes. As we pushed through the brash ice, many birds could be spotted flying overhead or resting on the ice. Kittiwakes and Black Guillemots were spotted in reasonable number. In the next moment a sound like a gun shot goes off, and we turn to see a large piece of ice falling from the glacier. The glacier was calving!! The piece of ice hit the water and made a big splash, sending up water and small pieces of ice up into the air. Moments later a small wave came from the site of the calving and we gently bobbed over the top. We were lucky enough to see and hear several calvings while at this site and soon it was time to head back to Ortelius.



Just as we started pushing our way back to

the ship, George called up on the radio to say he had found a bear wandering the shore line on the other side of the cliff. So we settled down in our zodiacs for a short ride around the corner to see if we could spot the bear. We were lucky! We rounded the corner and saw the bear taking a stroll along the beach. The zodiacs made a snake so as not to disturb the bear and we gently cruised passed. The bear was very busy, walking around the cliffs, rolling in the dirt and looking out to sea.



When he/she was finally done with their wanderings the bear laid down and went to sleep on top of the cliff face. What a great way to finish a zodiac cruise!

It was time to head back to the ship. We turned around and motored back to the ship in beautiful sun light. We all disembarked our zodiacs then there was a little time to change before we had to head up to the bar for the daily recap. Claudio gave us the plan for tomorrow and then we had a wonderful introduction to whales talk from Hazel. Finally it was time for dinner, where we spent the evening regaling our new friends with our tales of the day before turning in for a well earned rest.

## Day 3 – August 11<sup>th</sup>

### Monaco Breen, Texas Bar & Moffen Island

GPS position at 1200: 79°31.9' N, 012°24.9' E

Air Temp: 8°C Weather: Fog Wind: NE 5 Sea: calm

Our day started with a wonderful breakfast in the restaurant to prepare ourselves for the adventures of the day. We arrived at Monacobreen, named after Albert 1<sup>st</sup> duke of Monaco, who was responsible for formulating and financing expeditions to create navigational charts for this glacier and the surrounding area for the first time in 1906. We experienced lovely calm sea conditions for our zodiac cruise along this spectacular glacier front and enjoyed being driven through the brash ice. The overcast skies gave perfect conditions for photographing the ice with the grey clouds emphasizing the blue hues of the icebergs. The glacier was very active, and we witnessed numerous calving events (from a safe distance) with huge segments of ice crashing down into the water. We heard the rumbling of ice deep within the glacier, an atmospheric and awe-inspiring sound described as 'white thunder'. We marveled at the power and beauty of this gigantic frozen



river of ice making its way to the sea from 14km away up in the mountains, where it began as snowflakes hundreds of years ago, falling one on top of the other.

For the wildlife lovers, this morning gave good birding including **Arctic Terns, Black-Legged Kittiwakes, Northern Fulmar, Glaucous Gull, Black Guillemot and Little Auk**. The star of the morning for our feathered friends though were numerous **Ivory Gulls**, a much sought-after species for many guests who



visit this region. These beautiful birds have pure white plumage with a blue tinged beak with a yellow tip. In terms of mammals, some **Bearded Seals** were observed swimming. After two hours it was time to go back to the ship for some lunch. Our guides battled the brash ice and larger pieces of ice to get us back safely to Ortelius just in time to warm up with a hearty meal.

During mealtime *Ortelius* relocated to Texas Bar. On arrival, once the expedition team had established there were no polar bears around, guests were taken ashore with zodiacs. On land, people took part in a longer hike, medium walk or simply enjoyed the shoreline and



Texas Bar cabin. We admired the vegetation and plant life, especially the **Moss Campion, Mountain Avens** and beautiful **Polar Campion**. We avoided a territorial pair of **Arctic Skua** as best we could; they evidently had chicks in the area and were understandably defending their

brood from us as a perceived threat. Alongside the flora and fauna, we enjoyed a lovely waterfall and spectacular views across the bay looking back towards Monacobreen. All hikers finished their respective hikes at the landing site ready to head back to Ortelius for recap and then dinner. Jacob gave a wonderful recap about his work in glaciology and the future of our dear glaciers.

To finish off the day we sailed above 80° North! We celebrated with a happy hour in the bar and were excited to pass nearby to the island of Moffen. This island is a protected **Walrus** haul out and whilst maintain the mandatory distance we were thrilled to observe at least forty of these gigantic beasts doing what they do best; laying around together in a big pile of blubber and tusks! They are surely one of the most iconic, entertaining, and captivating animals of the Arctic and we hoped we would see them again in the coming days.

## Day 4 - August 12<sup>th</sup>

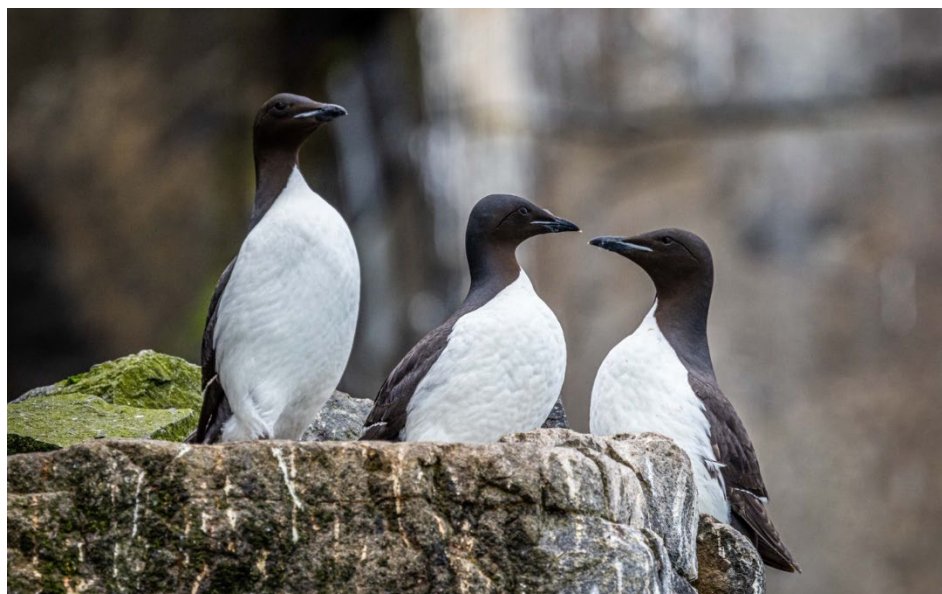
### Alkefjellet and Kinnvika

GPS position at 12 noon: 79°32.9' N, 017°41.0' E

Wind: Light air; Sea State: Calm; Weather: Foggy/Overcast; Air Temp: +4°C

After our usual wake-up call from Claudio, followed of course by fuelling ourselves for the day at the breakfast buffet, we were in for a truly incredible experience. Although we couldn't see it from the ship due to thick fog, *Ortelius* had arrived near Alkefjellet; towering cliffs where 60,000 pairs of **Brünnich's Guillemot** (aka **Thick-billed Murre**) come to breed every spring/summer. Flat calm waters made for a pleasant zodiac journey over to the cliffs and as we edged closer through the mist they loomed into view. A real 'wow' moment! Meltwater cascaded down in numerous waterfalls of different sizes, running down the tabular blocks of rock. The ledges here, alongside creating beautiful waterfeatures, provide the perfect nesting area for seabirds. The most common nesters here, the aforementioned **Brünnich's Guillemots**, reunite with their partner, whom they have been separate from during the non-breeding period of autumn and winter, spending that time far out at sea feeding. After

arriving back at the cliffs they mate and, a few days later, the female lays a single egg. The pair incubate the egg over a period of 26-39 days and once it hatches take turns to feed the chick until it fledges. Seeing around 120,000 birds perched on the





ledges of rock, flying to and from their nests, with yet more resting/feeding out on the water, was truly unbelievable! Alongside with the sight of the guillemots, there were also smiles all round as we listened to their cackling calls which sounded like laughter.

**Kittiwakes, Glaucous Gulls** and **Black Guillemots** were also seen as we journeyed the length of the cliffs. Some guests were lucky enough to have a brief sighting of an **Arctic Fox** as it ran along high up the mountainside. These animals are hard to spot, but seabird colonies are a good place to look for them as there is so much prey available in this area at this time of year. The fog had now cleared and it was time to head back to *Ortelius* for lunch before our afternoon activity.



The morning's excitement wasn't over yet though: as we began travelling away from Alkefjellet a **Polar Bear** was spotted resting on the mountainside! Now our bear count for the trip was up to three!

After lunch the Expedition Team scouted at Kinnvika to make sure it was safe for us to go ashore. This site is the location of huts used in a joint Swedish/Finnish venture which took place as part of the Arc de Meridian expedition to measure the curvature of the earth (and thus proved that it is not perfectly spherical, but flattened at both poles). Since then, the huts have also been used for other research in this remote polar region and are well maintained to this day. Guests split into three groups for a gentle hike around the huts and surrounding shore area with a fourth option to remain at the beach landing site. This Arctic tundra landscape had flowering plants such as **Svalbard Poppy**, **Tufted Saxifrage** and **Drooping Saxifrage**. In terms of fauna, **Arctic Terns** flew elegantly along the water's edge, occasionally stooping into a dive to catch small marine invertebrates to eat. Expedition Leader Claudio, who has both considerable expertise and interest in the tiny creatures of the sea delighted in showing guests a cup containing **Copepods** (oar-footed invertebrates) which are a food

source for the largest creatures on earth: the great whales. The fog started to close in so the landing was ended a little prematurely, but everyone had happily enjoyed some time exploring ashore and were content to return on board. All agreed it was a wonderful day and after recap, dinner and a couple of drinks in the bar it was time to get some rest ready for tomorrow's adventures.



## Day 5 – August 13<sup>th</sup>

### Pack-ice!

GPS position at 1200: 82°18.4' N, 015°35.4' E

Air Temp: 2°C Sea Weather: Open Wind: NW Sea state: 3



When we awoke this morning, it felt like we had arrived in another world. In the early morning *Ortelius* had reached the edge of the sea ice and we would spend the day journeying through it! Huge, flat pieces of ice split, creaked and shifted as we passed through them; we marvelled at the beautiful shapes, colours and patterns of this frozen seascape.

When we were enjoying our lovely breakfast, we heard the voice of our expedition leader Claudio that there was a **Polar Bear** on the ice, close to the ship! Most people went to the outside decks to enjoy watching this impressive animal walking on the ice. First, the bear walked towards the ship, but after half an hour, it decided to leave us, so we could finish our breakfast.

Half an hour later we spotted another **Polar Bear**, this time a female followed by her cub! But they were very far away and only people with good binoculars were able to see them. They were walking very fast, away from the ship, so it was not possible to have a closer look.



But there was more luck for us. There were **Northern Fulmars**, **Black-legged Kittiwakes** (also the young ones) and **Guillemots (Black and Brünnich's)** flying around the ship. The avian star of the day though was the white **Ivory Gull**.

It was a quiet day for the seals, but luckily there was a present from the restaurant team. To warm up, we got hot chocolate with rum at the bow of the ship. Just before we set sail to the south again, we spotted another polar bear walking on the ice. It was far away, but it was our fourth polar bear of the day.

Alongside enjoying the incredible views and wildlife outside, the Expedition Team offered a varied programme of lectures. Hazel gave the first talk of the day about polar bears and later in the afternoon, Jakub gave a lecture about sea ice. The two lectures were very well picked, because we saw polar bears on the sea ice!

While the bridge team skilfully navigated *Ortelius* south again, the expedition team talked about the plans for tomorrow. Besides that, they gave

information about whales, seals and dolphins and they told the story about the special journey Andree took with its balloon.

It was a beautiful day, full of ice and wildlife, but today we also reached our northern most point of the voyage: 82°19.5' N, 015°52.2' E. We wondered what excitement and new experiences would await us tomorrow!

At the end of the afternoon the fog became thicker and the bridge team skilfully navigated *Ortelius* back into open water, heading Southwards. We wondered what excitement and new experiences would await us tomorrow!



## Day 6 – August 14<sup>th</sup>

### Hingstsletta, Wahlburgøya and Brasvelbreen

GPS position at 1200: 79°32.6' N, 012°30.3' E

Air Temp: 8°C Weather: Fog Wind: WSW Sea state: 2

Our day started with a wake-up call from Expedition Leader Claudio at 7:15am, but he wasn't just wishing us a good morning he had news to share: SIX **Polar Bears** had been seen on shore at Hingstsletta! Plan A for this morning, a hike at nearby Faksevagen, had to be abandoned in favour of zodiac cruising to observe these magnificent animals. Besides wanting to enjoy the fantastic view of the bears, for safety, we certainly couldn't go ashore with them around! The bears were eating, or resting in the vicinity of, a carcass. This appeared to be a dead walrus. Given that the bears were eating and not in any hurry to leave the area, we also had time to eat breakfast whilst the Expedition Team readied the zodiacs. Just before 8:30am we were dressed ready in our waterproofs and warm layers, excitedly boarding the boats, preparing our cameras or looking through binoculars at the bears as we headed closer, snaking in a line with the zodiacs. What followed was an incredible experience!



A female bear with two cubs were tearing into the meat of the carcass. Based on their size these were first year cubs, meaning they would have emerged from their maternal den in spring 2021. Both youngsters looked to be in very good condition, their mother was a little on the thin side but also appeared healthy and had clearly been doing a great job looking after her twins. Nearby another female was sleeping with her single cub which was much larger than the other two; this one is certainly a second-year cub, meaning it was born in winter 2020. They remained inactive during our zodiac cruise, as many bears are at this time

of year, conserving precious energy reserves whilst prey availability is lower (compared to the winter). Another lone bear, which appeared to be a sub-adult female, was sometimes resting but also made numerous attempts to feed on the carcass, slowly and cautiously approaching the female with the two cubs. The lone bear was chased off a few times (clearly the mother did not feel like sharing!) After two hours cruising observing the bears, with them completely unbothered by our presence, we headed back to the ship to warm up with a hot drink and excitedly discuss our experience with fellow guests. Truly a once in a lifetime sighting!



During lunch the bridge team repositioned *Ortelius* to our afternoon destination of Whalbergøya, an island with a sloping, sandy beach which is the location of a **Walrus** haul out. We were in luck: at least forty of these huge, tusked beasts were resting on the shore! Seeing these magnificent creatures was not the only appeal of the site though, we also enjoyed hiking with guests split into four groups (a long, fast hiking group, two medium groups and a group that stayed at the beach). Features of interest included various bones of different animals and plant life alongside the beautiful scenery.



The long hikers came across a beach which was blighted by a shocking amount of rubbish, including a large amount of fishing netting and rope. This spurred everyone into action for an impromptu beach clean. In the short time available, an incredible 100kg of rubbish was removed from the shoreline and taken back to *Ortelius*. This will be placed into specific bins at the pier in Longyearbyen as part of the ongoing efforts of the Clean Up Svalbard campaign by AECO (Arctic Expedition Cruise Operators). A huge well done and thank you to everyone who gave their time and energy to leave this wonderful site in a better condition than we found it!



Back on board we gathered in the bar for a brief recap from Claudio explaining our plans for tomorrow, followed by another delicious dinner. As if we hadn't had enough excitement for one day, there was one final sight to enjoy; in the evening we

ship cruised the magnificent Bråsvellbreen glacier which is a part of Austfonna, the second largest icecap of the northern hemisphere. Glassy, calm seas with a sky of soft pastel pink, purple and blue and a gigantic wall of ice complete with cascading waterfalls. We couldn't believe our eyes! Everybody, from all the guests to the Captain and Officers to the Expedition Team filled the decks, taking photos and videos of this spectacle, which showed just how special this moment was which we all shared. If there was one word to sum this experience up it would be unforgettable.



**Day 7 – August 15<sup>th</sup>**

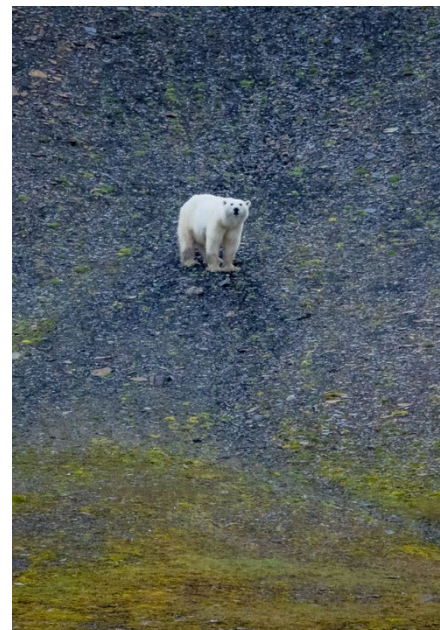
**Kapp Wahlberg and Kapp Lee**

**GPS position at 1200: 78°11.6'N, 021°18.9'E**

**Air Temp: 8°C Weather: Cloudy Wind: NW1 Sea: 1**

We started our day with a wake-up call from Claudio greeting us and giving us the weather for the day followed by a great breakfast in the dining room. Whilst we dined the expedition team scouted the site where we were to land. A beautiful bird cliff called Kapp Wahlberg. However, the team very quickly spotted a **Polar Bear** resting under the cliff so a change of plan was called for! Instead, we would zodiac cruise the coastline, admiring the bear and the other wildlife present. So, we loaded up into our zodiacs and started our journey towards the shore.

First, we came to the kittiwake colony, which had taken up residence in a crack in the mountain side overlooking a small stream. Their calls could be heard clearly by us floating by the shoreline and just beneath them lay the bear. We watched him for a little while then started meandering our way along the coast. We then came across a solitary **Reindeer** with big antlers





grazing on the hillside. We stopped to watch it as it wandered around looking for food. We then continued on our journey and an excited call went over the radio. One of the guests in the other zodiacs had spotted an **Arctic Fox**! The animal was curled up in a ball fast asleep on the hillside. We spent a little time watching it to see if it would wake up but then moved on with our cruise. By this time the **Polar Bear** had woken up and was climbing the bird cliff trying to get to the **Kittiwake** nests! We watched as the powerful creature made several attempts to reach them but appeared to be unsuccessful.



Just then something amazing happened! The fox had woken up and had come down to the shoreline close to the boats. He/she was a beautiful shade of grey and white, unusual for this time of year. We watched in awe as it caught sight of a **Glaucous Gull** with a freshly killed **Kittiwake** chick. To our amazement the fox decided to take on the big bird and surprisingly was able to run up to and rob the gull of its meal. We watched as the fox made quick work of its prize under the disdainful eye of the Glaucous Gull. The fox was then on the move again running down to the beach to scurry along the beachline in search of more food morsels. Even as we tried to move away with our zodiacs the fox appeared to enjoy our company and followed us along the shore. We also saw both **Arctic Skua** and **Long-tailed Skua**. Eventually it was time for us to leave and we left the fox to its day, returning to the ship just in time for a delicious lunch.

While we dined the ship repositioned to our next location, a scenic little spot called Kapp Lee. This time the expedition team were happy to report no bears sighted (though we love seeing them we wanted to go safely ashore!) So once again we loaded up into our zodiacs and headed ashore for a landing.

Upon arriving on the shore we were immediately greeted to the sight of five reindeer sitting just above the landing site chewing on the vegetation. 300 metres to the right we were delighted to find the biggest walrus haul out we've seen so far. We joined our walking groups and headed out to see them. The day was sunny and the **Walrus** were



enjoying snuggling up together in a big pile. They were comical to see as they often annoyed each other with their wriggling and writhing to get comfortable. This led to them pushing each other with their fins and prodding with their tusks. Sometime this would lead to the odd disagreement and the Walrus for haul themselves onto their fins to make a point but would quickly settle back down preferring sleep over quarrelling.



We took thousands of photos and watched them for as long as we could before it was time to continue with our walk. We walked over the hills, spotting many of the plants we had been learning about over the last few days. It was a glorious day for a hike. Eventually it was time to go back to the ship. We loaded up into the zodiacs once more and headed back to the ship in time for recap followed by a wonderful dinner.

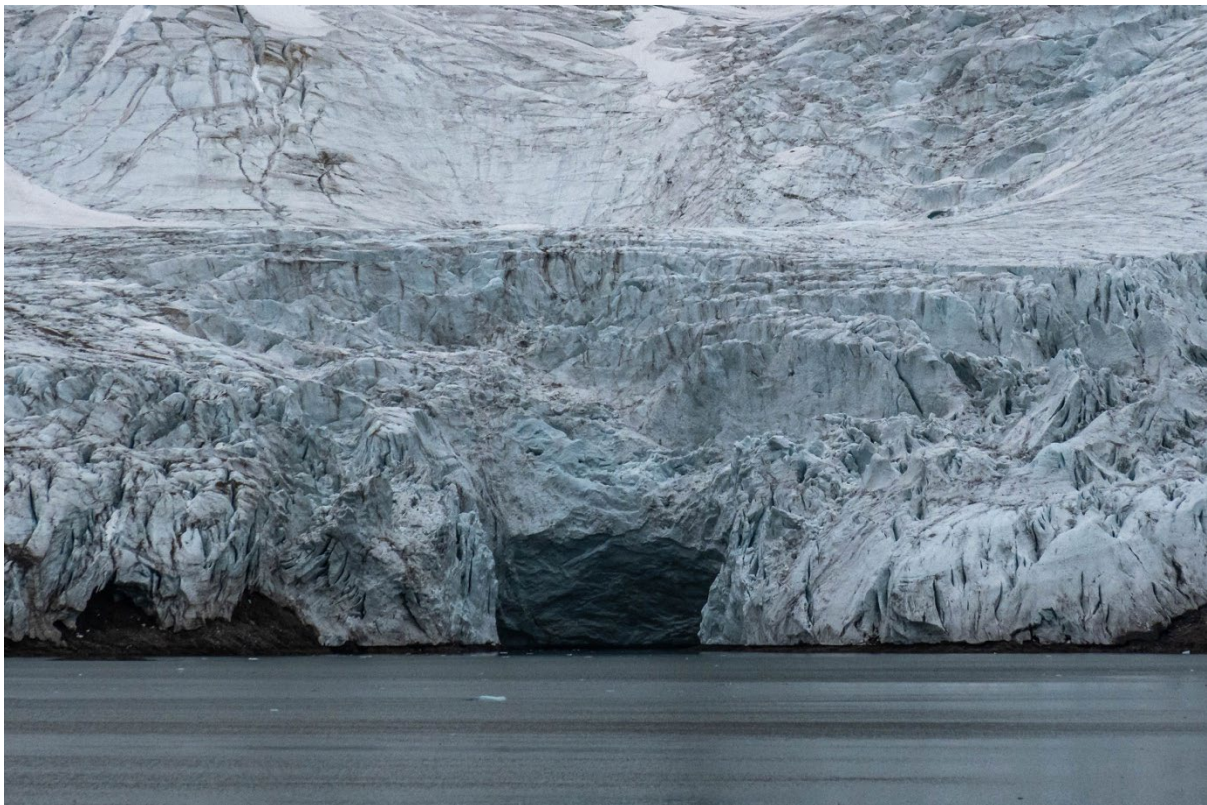
## **Day 8 - August 16<sup>th</sup>**

### **Samarinbukta and Samarinbreen**

**GPS position at 1200: 76°56.0'N, 016°16.5'E**

**Air Temp: 2°C Weather: Rain Wind: E-8 Sea: 3**

Overnight we cruised from eastern to southern Svalbard, specifically to the Hornsund fjord in south Spitsbergen. From the early morning the weather was non-optimal, with relatively low clouds covering the highest mountain tops and, more importantly, fairly strong eastern wind. During breakfast around 8:00am we entered the fjord, but our Captain and Expedition Team decided to abandon the landing at Gåshamna due to dangerous waves. The ship sailed further east, passing by wonderful glaciers and turned south towards Samarin Bay, well protected from winds.



The plan B worked out great! We cruised in Zodiacs along the Samarin Glacier at the end of the bay and landed just next to Egg Glacier, a small but spectacular ice mass resembling high mountain glaciers, rather than polar ones. In the meantime, the weather started to deteriorate. Although

waves and raindrops splashing on our faces failed to cool our adventurous attitude, we were happy to back on the ship again.



During lunch Ortelius cruised around the eastern end of the fjord. The wind was getting stronger over time so our afternoon visit to Burgerbukta had to be cancelled. No one was upset by this, though, since the weather was truly demanding: horizontal rain and rough sea are not necessarily the best weather for outdoor activity. Instead, our Assistant Expedition Leader George gave a great lecture about Arctic geopolitics. After 18:00pm we gathered again in the bar for a recap introducing the plans for tomorrow by Claudio and short presentations by our guides Miriam, Julia and Jakub. Subsequently we went to the dining room for an Arctic barbeque!



In the evening Ortelius left the Hornsund fjord and took the course to the north. Sea got really rough, with large waves splashing white foam to the air, and wind speed exceeding 70 knots, or nearly 130 km/h! We felt that both in our cabins and in the bar – tilting of the ship was considerable at times, but our old lady can withstand much more than this, particularly under the command of our captain Ernesto! We hope that tomorrow, on the last day of our grand arctic voyage, skies will be more merciful.

## **Day 9 – August 17<sup>th</sup>**

### **Bamsebu (at Ahlstrandhalvøya) and Fleur de Lyshamna**

**GPS position at 1200: 77°33.8'N, 014°56.4'E**

**Air Temp: 6°C Weather: Cloudy/Rain Wind: E-5 Sea: 2**

This morning we were scheduled to go ashore at Ahlstrandhalvøya with Bamsebu cabin, a site where the remains of industrial scale beluga whaling was carried out as recently as the 1930's. The shore is littered with the bones of thousands upon thousands of these gentle, white whales serving as a sobering reminder of the large-scale hunting which took place here. After a rough time the night before with high winds (up to over 50 knots) and rough seas conditions remained a little challenging, but Expedition Leader Claudio optimistically announced that the Expedition Team would scout the site and evaluate the situation once they were in zodiacs. Unfortunately, the swell proved to be too

much for the planned operation to go ahead safely at Bamsebu so the Expedition Team returned to *Ortelius* to hatch plan B. A short time later it was announced that conditions round the corner in Fleur de Lyshamna were much better and favourable enough to enable us to go ashore and provide the opportunity to polar plunge too! Hooray!



With the site safely scouted guests were taken to shore via zodiacs. It was raining and there was a bit of swell so we got a bit wet but with waterproofs on and a cheerful disposition everyone was just happy to be going ashore. We took interest in the history of the site with huts and remains of boats used for whale hunting, as at nearby Bamsebu. Whilst most guests returned to the zodiacs to head



back to *Ortelius* some other brave (mad?!) folks started to remove their clothing down to their swimming costumes ready to plunge. After a quick dip in the freezing cold sea, with obligatory selfies as proof, it was time to redress and warm up back on board. After lunch we had hoped to take part in another

shore-based activity but conditions had worsened meaning we couldn't launch the zodiacs. The Expedition Team collaborated to provide a series of short lectures combined over the course of an hour, with topics ranging from Expedition Guide Julia speaking about whaling to Assistant Expedition Leader George talking about Arctic shipping. Just before this extended recap started at 16:00pm numerous whales started to be seen, mainly **Fin Whales** (the second longest after the blue whale, reaching 27 metres), but a **Humpback Whale** and **Minke Whales** were also seen. The large, straight, bushy blows of these huge marine mammals could be seen all around us as they surfaced to breathe! So, appropriately, Expedition Guide Hazel spoke about Fin Whales to complete the mini-lecture series for the afternoon.

Later in the evening Claudio gave the last recap of our expedition, describing where we had been and the wonderful experiences we had shared over the past nine days. We raised a glass of bubbly in celebration as our Captain Ernesto Barria joined us and the Expedition Team in the bar to say farewell and mark the end of the voyage. A fantastic memento of our trip was provided courtesy of Expedition Guide Photographer Werner in the form of a photo/video slideshow. This was followed by our final delicious dinner on board, during which we had chance to thank and applaud all of the Crew who work so hard behind the scenes, from the Galley to Hotel to Housekeeping before one last drink in the bar and finishing packing our bags.

## **Day 10 – August 18<sup>th</sup>**

### **Disembarkation: Longyearbyen**

**GPS position at 0800: 78°13.7' N, 015°36.1' E**

**Air Temp: 14°C Weather: cloudy Wind: Light Sea: 1**

Our fantastic expedition trip came to an end today. For some, disembarkation took place in the small hours of the morning as they had a very early flight to catch. Others were able to stay on board to enjoy a final breakfast with us before departing. The expedition team and helpful crew had taken care of luggage, so all that remained was to say our goodbyes: to our newly made friends, fellow travellers and everyone on board Ortelius whom we had come to know over the past nine days.

Some of us had time left to enjoy exploring Svalbard after leaving the ship whilst others had to travel home. Regardless, we all left with many great memories, treasured of photographs of our wonderful experiences and perhaps new friends made too, for future travel adventures!



*Thank you all for joining us on this remarkable adventure;  
for your great company, good humour, interest and enthusiasm.  
We hope to see you again in the future, wherever that might be!*

**Total distance sailed on our voyage: 1270 nautical miles  
Furthest North: 82°18.4' N, 15°54.4' E**

**On behalf of  
Oceanwide Expeditions,  
Captain Ernesto Barria,  
Expedition Leader Claudio Ghiglione,  
Hotel Manager Volodymyr Cherednychenko  
and all the crew and staff,  
it has been a pleasure travelling with you!**

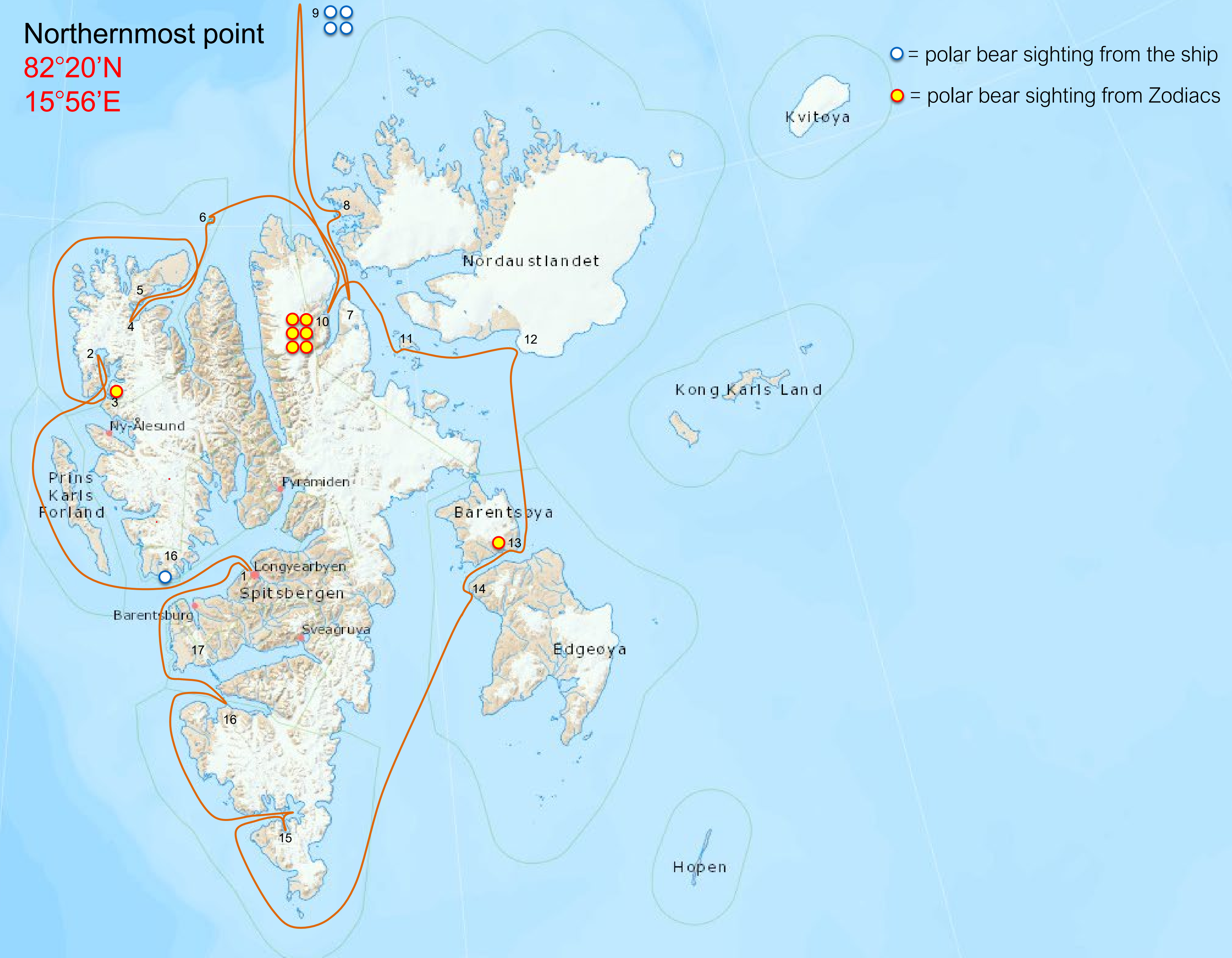




# Ortelius OTL11-22

1. Longyearbyen
2. Lilliehöökfjorden
3. Fjortende Julibukta (14th July Bay)
4. Monacobreen
5. Texas Bar
6. Mofen Island
7. Alkefjellet
8. Kinnvika
9. Northernmost point in sea ice
10. Faksevagen
11. Wahlbergøya
12. Bråsvellbreen/Austfonna
13. Kapp Waldburg
14. Kapp Lee/Dolerittneset
15. Samarinbreen/Hornsund
16. Fleur de Lyshamna

Northernmost point  
**82°20'N**  
**15°56'E**



## Birds and Mammals of Svalbard

English Name	Latin	9-aug	10-aug	11-aug	12-aug	13-aug	14-aug	15-aug	16-aug	17-aug	18-aug
Red-throated diver	<i>Gavia stellata</i>						X				
Northern Fulmar	<i>Fulmarus glacialis</i>	X	X	X	X	X	X	X	X	X	X
Pink-footed Goose	<i>Anser brachyrhynchus</i>		X					X		X	
Barnacle Goose	<i>Branta leucopsis</i>		X							X	X
Brent Goose	<i>Branta bernicla</i>	X									
Common Eider	<i>Somateria mollissima</i>		X	X	X					X	
Long-tailed Duck	<i>Clangula hyemalis</i>							X			
Purple Sandpiper	<i>Calidris maritima</i>		X		X		X			X	
Arctic Skua	<i>Stercorarius parasiticus</i>		X	X	X			X	X	X	
Long-tailed Skua	<i>Stercorarius longicaudus</i>		X					X			
Great Skua	<i>Stercorarius skua</i>		X (2)							X	
Sabine's Gull	<i>Xema sabini</i>			X							
Glaucous Gull	<i>Larus hyperboreus</i>		X	X	X			X		X	
Black-legged Kittiwake	<i>Rissa tridactyla</i>	X	X	X	X	X	X	X		X	
Ivory Gull	<i>Pagophila eburnea</i>		X	X		X	X				
Arctic Tern	<i>Sterna paradisaea</i>		X	X	X		X				X
Brunnich's Guillemot	<i>Uria lomvia</i>	X	X	X	X	X		X	X		
Black Guillemot	<i>Cephus grylle</i>		X	X	X	X	X	X			
Little Auk	<i>Alle alle</i>		X	X	X	X			X		
Atlantic Puffin	<i>Fratercula arctica</i>	X	X		X	X					
Snow Bunting	<i>Plectrophenax nivalis</i>		X		X						

### MAMMALS

English	Latin	9-aug	10-aug	11-aug	12-aug	13-aug	14-aug	15-aug	16-aug	17-aug	18-aug
Walrus	<i>Odobenus rosmarus</i>			X			X	X			
Bearded seal	<i>Erignathus barbatus</i>		X				X				
Harp seal	<i>Pagophilus groenlandicus</i>					X					
Common /Harbour seal	<i>Phoca vitulina</i>								X		
Minke Whale	<i>Balaenoptera acutorostrata</i>	X (3)			X					X	
Fin Whale	<i>Balaenoptera physalus</i>	X (5)			X					X	
Humpback Whale	<i>Megaptera novaeangliae</i>									X	
Polar Bear	<i>Ursus maritimus</i>	X (1)	X (2)		X	X (4)	X (6)	X (1)			
Arctic Fox	<i>Alopex lagopus</i>				X			X			
Spitsbergen Reindeer	<i>Rangifer tarandus platyrhynchus</i>		X					X			

---

# Claudio Ghiglione - Expedition Leader

---



Claudio was born in Italy in 1983. He is a marine ecologist specialised in polar regions, expedition guide and nature photographer.

Interested in science and nature since he was very young, he graduated first in *Marine Environmental Sciences* (BA) and then in *Marine Science* (MA). In March 2017 he obtained a *PhD in Earth, Environmental and Polar Sciences* run in cooperation with the Italian National Antarctic Museum (Italy) and the British Antarctic Survey in Cambridge (UK).

For several years he worked as a polar researcher focusing his work mainly on the South Pole (Antarctica); his objective is to analyse and evaluate information used for ecological modelling and possible future scenarios following global warming. During his academic career, he actively takes part in some scientific expeditions both in Arctic and in Antarctica in cooperation with Norway and England.

His passion for travel, mainly to cold and often inhospitable places, and his career as a photographer led him to travel a lot, creating and managing – often in complete autonomy – itineraries and logistics. In 2017 – thanks to his professional experience, the skills acquired over the time and the need to spend more time on the field – he starts working full time as a guide Oceanwide.

Specialised in nature, scientific and travel photography, Claudio uses his photos as a means of telling stories to draw attention mainly to his main subjects, namely animals, nature and environment. In the 2019 he published his first book 'Polar Lights' with whom he shares the passion for nature photography.

---

# George Kennedy – Assistant Expedition Leader

---



George is an anthropologist and political scientist currently studying at the Australian Institute of Marine and Antarctic Science. He has a keen interest in cultural identity and contemporary geopolitics in the polar regions. His current research focusses on the complex dynamics between indigenous, scientific and political stakeholders in their pursuit of environmental protection in Antarctica and the Arctic.

In his practice as an anthropologist, George has worked predominantly with community development organisations in Latin America. His work has focussed on identifying collaborative solutions to support environmental conservation and sustainable tourism in Patagonia and the Amazon basin.

Prior to his work in anthropology, George served as a paramedic in Australia, still occasionally throwing on the uniform to work with Ambulance Victoria in Melbourne.

Second only to expedition cruising, George's great passion is motorcycle travel. He has ridden from Mongolia to India, around Australia, and most recently from Patagonia to Mexico on his Kawasaki KLR650.

---

# Miriam Vermeij – Expedition Guide

---



During her youth she travelled a lot with her parents and sister in Europe. Miriam developed an interest in nature at a young age and lots of time was spent outdoor, exploring local insects and plants. Following her interests, she followed an environmental science study and got a degree with a specialisation on soil pollution. Nowadays she is a self-employed environmental planning officer.

From 1999 the travelling outside Europe started and after a trip to South America, the Falklands and Antarctica in 2006 she got the passion for the poles. The first contact with the Arctic was in 2011 and after another trip in 2013 she came back as field assistant on the Dutch polar expedition (SEES) in 2015 and to the Dutch polar station in Ny Alesund in 2016. Since 2017 she has been guiding in the Arctic, followed by the Antarctic in 2018.

In Holland Miriam is a nature guide since 2003. First in the local forest and since 2008 also in one of the largest national parks in Holland: De Biesbosch. There she is guiding school kids and adult groups on walking and boating trips. She is also part of the board that manages the local forest.

---

# Werner Kruse - Expedition Guide

---



Werner Kruse is a well-seasoned traveller and an experienced filmmaker, photographer and expedition guide. He has worked on numerous international productions and produced travel documentaries, including wildlife and expedition documentaries in Africa. His film, *The Boy from the Wild*, premiered at the Royal Geographic Society in London as well as the Wildlife Conservation Film Festival in New York City. Currently the film is available on Amazon Prime Video.

After completing his studies, he travelled extensively, making documentaries all over the world. He explored places such as Petra, Machu Picchu, Great Barrier Reef and Rapa Nui, Spitsbergen, Iceland as well as his favourites, the Hawaiian and Tahitian Islands. He is currently based in Cape Town, South Africa, working on TV shows, documentaries, commercials and corporate productions. He frequently travels abroad for various video and photographic assignments.

Werner is extremely passionate about conservation, particularly wildlife and the ocean and supports various environmental causes. His work depicting Gentoo penguins in Antarctica was featured by National Geographic, and his annual return to Antarctica remains a highlight for him. His travels have taken him to 112 countries, enabling him to capture a richly diverse spectrum of images.

---

# Jakub Małecki - Expedition Guide

---



Jakub was born in Poland in 1985. As a kid, he dreamed of becoming an astronaut, but later his focus shifted towards astronomy. Eventually, he obtained a masters and doctoral degree in Earth Sciences and became a glaciologist. As he puts it, researching remote, glacier-covered regions is almost like landing on another planet, so the childhood dream has partly come true.

Since 2007 Jakub has been studying glaciers across the world, either directly or remotely, i.e., using satellite or aerial images. His main interest is how glaciers respond to changing climate in different environmental settings. Most of his glaciology work Jakub carries out on Svalbard, the arctic archipelago located midway between Norway and the north pole, where he fell in love with ice. Since then, Jakub joins expeditions to remote regions on an every-year basis.

Jakub considers public education by the science community at least as important as delivering new knowledge, so he is a keen glaciology communicator, book author and a frequent guest to the Polish media outlets and science festivals where he comments on polar and mountain affairs. Apart from glaciology, Jakub is a huge enthusiast of planetary sciences and space exploration and tries to play the ukulele.

---

# Julia Angermeier - Expedition Guide

---



Julia was born Germany in a small village outside of Frankfurt.

She has always had a love of the outdoors. Camping, hiking, mountaineering, kayaking have been her favorite activities since her childhood.

She started her professional career as an Intensive Care Nurse in 1998 and finished her studies in 2003. She continues this profession today in her time off.

The majority of her time, however, is spent in Puerto Natales (Chile) where she works as a trekking and outdoor guide in Torres Del Paine Nationalpark and other regions in Patagonia some of the most remote and beautiful parts of the world.

In 2019 she started working as a camping- and expedition guide for Oceanwide Expeditions in Antarctica. From the first day on she fell in love with the beautiful and breathtaking nature of the deep south. Becoming a Polar guide was now her goal.

Julia's "Speciality" are still people...telling the known and unknown stories of the most interesting people in the history of exploration of the polar regions became her passion.

Another passion of her is connecting people with nature, and showing the beauty around them. Getting people away from their computers, social media and stress, and giving them a life changing experience.

Julia looks forward to sharing these amazing adventures with her guests on every trip.



---

# Hazel Pittwood - Expedition Guide

---



Hazel grew up in the county of Dorset on the South coast of the UK. A childhood spent pond dipping, bug hunting and exploring the countryside and coast nurtured her love of the natural world.

She has worked in practical conservation and community engagement roles for a variety of habitats, including heathland and coastal nature reserves. Hazel also has experience surveying rare protected species and is a trained wildlife rescue volunteer and marine mammal medic

Whilst she is broadly learned about the natural world, Hazel has specialised in marine mammals and seabirds since 2014. At that time she began volunteering as a marine mammal and seabird surveyor, collecting sightings data regarding these animals for UK based conservation charities. In 2017 she worked on a passenger ship travelling between the UK and Spain across the Bay of Biscay for six months, delivering talks and leading wildlife watching sessions out on deck.

Hazel has been working as a guide and lecturer on cruise ships for over three years. This role has taken her to Norway and Svalbard, Iceland, Alaska, Canada, the Faroe Islands, the Canary Islands, the Caribbean and Central America. She is a World Cetacean Alliance certified responsible whale watching guide, championing the highest standards of wildlife experiences.

The polar regions host an incredible diversity of seabird and marine mammal species and Hazel looks forward enhancing your encounters with these incredible animals with her knowledge, skills and enthusiasm.

---

# Tiphanie May - Expedition Guide

---



Tiphanie is an 8<sup>th</sup> generation Falkland Islander living in Stanley. She was raised on a small group of islands called Speedwell Island Group, owned and worked by her parents as a sheep farm and family crab business.

Tiph was raised surrounded by Falkland's wildlife with her family island boasting rookeries of Magellanic penguins, Gentoo penguins as well as several other breeding birds. The islands also include haul outs of South American sealions and elephant seals. Surrounded by all this wildlife it was of no surprise that she found nature

fascinating. From the penguin couple that lived under her house to the wonderful variety of creatures found in the crab pots, marine life was a theme. This led to her to travel to the UK at 16 to study to be a marine biologist.

Tiph spent 6 years in the UK studying to get her BSc (HONS) Marine Biology and MSc in Marine Biology. Using her holidays to volunteer in the Falklands for various conservation projects to gain experience. Upon completing her studies, she joined the Government Fisheries Department, spending 200 days per year at sea monitoring seabird activity and collecting research material. The sea has been a big part of her life, from a young age she worked to haul crab pots with her father's boat. Later she went on to work for an experimental sustainable fish farm which allowed her to get her RYA qualifications in Power Boat. Tiph currently works full time operating a small boat in the Falklands.

Tiphanie started working in the tourist industry at the age of 23. Having grown up with no roads her whole life, 4X4 tour driving just made sense. Tiph has worked to provide a variety of tours such as hiking, 4X4 and penguin colony visits. In 2018, Tiphanie was offered the amazing opportunity to go to Antarctica and South Georgia with Oceanwide as guide. She fell in love with the scale of the landscape and has never looked back.

---

# Joris Uijt de Haag – Ship's doctor

---



Joris is 33 years old, Dutch, and one of two physicians aboard the m/v Plancius on this expedition to Antarctica. Together with his colleague Marringje Hofmeester, who he has known for years, he will be your point of contact for any medical consultation. Joris has worked as a doctor since 2016, mostly in emergency and intensive care medicine where he has skilled himself in treating traumatic injuries, organ failure and stabilizing critically ill patients. Currently he works as a freelance general practitioner. Trained and experienced in a variety of fields he engages every medical complaint or

situation with patience, a professional attitude and utmost enthusiasm!

Joris lives and works in the Netherlands. Born and raised in flat and urban environment, glaciers, alpine peaks and penguins aren't exactly his natural habitat, but he happily changes surroundings every time he is given the opportunity. In his spare time he enjoys running and cycling, cooking a decent carbonara, and (of course) travelling.

This is his first time working as a physician on an expedition ship so he is just as excited for this trip as you are! As he joins you in most of the activities on and off the deck he will soon become a familiar face. Feel free to consult him whenever you deem necessary, as looking after for your physical and mental wellbeing is precisely what he signed up for (apart from seeing penguins). He wishes you a safe, healthy and mighty expedition!



Around Spitsbergen, in the realm  
of Polar Bear & ice  
Tuesday 09<sup>th</sup> August 2022  
Longyearbyen - Embarkation

## WELCOME ABOARD!

*Luggage will be delivered to your cabin. Please make check to make sure you have received all your luggage. If you have any extra luggage in your cabin – please notify a crew member.*

**\*\* Tea and coffee are always available in the bar on deck 6 \*\***

- ±1730      **Welcome & safety briefing** - Please join us in the **lecture room** (deck 3, forward) for a welcome to the voyage, followed by a **mandatory** safety briefing and lifeboat drill.
- ±1800      **Departure** from Longyearbyen.  
The bridge will be closed during these operations.
- 1845      **Captain's Welcome and Expedition Introduction** – Please join us in the **bar** (deck 6) for an overview of our expedition around Spitsbergen, as well as an introduction to the team that will take you there.
- 1930      **Dinner** is served in the **dining room** (deck 4)

*We will sail into open sea this evening and the ship may move – please secure your belongings and be careful when moving around the ship.*

0715        **Wakeup call** – Good Morning

0730        **Breakfast** is served in the **dining room** (deck 4).

***This morning we hope to visit Lilliehookbreen, a stunning glacier in Krossfjorden spanning five kilometres. We aim to arrive at the glacier front ~0800 and invite you to the outer decks to enjoy this beautiful bay from Ortelius.***

1000        **Mandatory Polar Bear and Zodiac briefings** – Please join the expedition team in the **lecture room** (deck 3) for our mandatory Zodiac and Polar Bear Safety briefings.

1115        **Activity briefing** – Please join the expedition team in the **Bar** (deck 6) for an AECO briefing and introduction to this afternoon's activities.

±1200       **Muck Boot distribution** – we will call you in colour groups to receive your muck boots from the lecture room (deck 3).

1230        **Lunch** is served in the **dining room** (deck 4).

***This afternoon we hope to visit 14 Juli bukta, a beautiful glacial bay with opportunities to spot puffins, reindeer and various native flora. This afternoon's activities will include both a zodiac cruise and landing. All passengers will enjoy both activities. The Red group will land first, whilst the Blue group will zodiac cruise first. Groups will then swap on the beach in the mid-afternoon.***

±1430       **14 Juli Bukta Landing and zodiac cruise** – Please listen for **announcements** – we will call you in colour groups to the zodiac boarding area on deck 4.

~1430 – We invite the RED group to board zodiacs for a landing.

~1445 – We invite the BLUE group to board zodiacs for a cruise.

1830        **Daily Recap** - Please join the expedition team in the **Bar** (deck 6) for our daily recap and briefing for tomorrow's activities.

1900        **Dinner** is served in the **dining room** (deck 4).



Around Spitsbergen, in the realm  
of Polar Bear & ice  
Thursday 11<sup>th</sup> August 2022  
Monacobreen & Texas Bar

0715 **Wake up call** – Good Morning

0730 **Breakfast** is served in the **dining room** (deck 4).

***This morning we aim to take you on a zodiac cruise at Monacobreen – a large glacier in the Northwest of Spitsbergen. Here we have great opportunities to cruise through ice, past icebergs and spot wildlife and birds.***

0900 **Monacobreen Zodiac Cruise** – Please listen for announcements – we will call you by colour groups to board the zodiacs.  
~0900 – We invite the BLUE group to board zodiacs (deck 4).  
~0910 – We invite the RED group to board zodiacs (deck 4).  
**Please listen for announcements for boarding – times may vary.**

1230 **Lunch** is served in the **dining room** (deck 4).

***This afternoon we hope to land at Texas Bar – a great landing for hiking, as well as viewing the surrounding scenery and vegetation.***

±1430 **Texas Bar Landing** – We will call you in groups to board the zodiacs;  
~ 1430 – Long walkers to board zodiacs (deck 4).  
~ 1445 – Medium and short walkers to board zodiacs (deck 4).  
**Please listen for announcements for boarding – times may vary.**

1830 **Daily Recap** - Please join the expedition team in the **lounge** (deck 6) for our daily recap and briefing for tomorrow's activities.

1900 **Dinner** is served in the **dining room** (deck 4).



Around Spitsbergen, in the realm  
of Polar Bear & ice  
**Friday 12<sup>th</sup> August 2022**  
**Alkefjellet & Kinnvika**

0715      **Wakeup call** – Good Morning

0730      **Breakfast** is served in the **dining room** (deck 4).

***This morning we aim to zodiac cruise at Alkefjellet; a large Brunnich's Guillemot colony, with chances of spotting more bird species and arctic fox.***

0830      **Alkefjellet Zodiac Cruise** – Please listen for announcements – we will call you by colour group to board the zodiacs.

~ 0830 – We welcome the RED group to board zodiacs

~ 0840 – We welcome the BLUE group to board zodiacs

1230      **Lunch** is served in the **dining room** (deck 4).

***This afternoon we hope to land at Kinnvika; a former International Geophysical Year research station in Murchinsonfjord, located at the north-eastern shore of the Hindlopen strait. Whilst ashore, we will offer medium and short guided walks.***

1530      **Kinnvika Landing** – Please listen for announcements – we will call you by colour group to board the zodiacs.

~ 1530 – We welcome the BLUE group to board zodiacs

~ 1545 – We welcome the RED group to board zodiacs

1900      **Daily Recap** - Please join the expedition team in the **lounge** (deck 6) for our daily recap and briefing for tomorrow's activities.

1930      **Dinner** is served in the **dining room** (deck 4).



Around Spitsbergen, in the realm  
of Polar Bear & ice  
Saturday 13<sup>th</sup> August 2022  
Sea Ice day

*At approximately 7am we will sail into the sea ice. We will spend today exploring the ice and searching for wildlife!*

- 0745      **Wakeup call** – Good Morning
- 0800      **Breakfast** is served in the **dining room**.
- 1030      **Polar Bears** – Please join Hazel in **the bar** for her presentation on our king of the Arctic, the polar bear.
- 1230      **Lunch** is served in the **dining room**.
- 1600      **Sea Ice** – Please join Jacob in **the bar** for his lecture exploring how changes in the far northern ocean will impact our global ecosystem.
- 1815      **Daily Recap** - Please join the expedition team in **the bar** for our daily recap and briefing for tomorrow's activities.
- 1900      **Dinner** is served in the **dining room**.





Around Spitsbergen, in the realm  
of Polar Bear & ice  
Sunday 14<sup>th</sup> August 2022  
Faksevagen & Whalbergoya

0715      **Wakeup call** – Good Morning

0730      **Breakfast** is served in the **dining room** (deck 4).

***This morning we aim to land at Faksevagen; a beautiful bay in Lomfjord, with good chances of spotting whales, as well as reindeer and arctic fox ashore. During the landing, we plan to offer long, medium & short walks.***

0930      **Faksevagen Landing** – Please listen for announcements – we will call you by groups to board the zodiacs.  
~ 0930 – Long walkers to board zodiacs (deck 4).  
~ 0940 – Medium and short walkers to board zodiacs (deck 4).

1300      **Lunch** is served in the **dining room** (deck 4).

***This afternoon we hope to land at Whalbergoya; a small island in the middle of the Hindlopen strait. We will offer long, medium & short walks as well as a visit to the walrus haul out.***

1630      **Whalbergoya Landing** – Please listen for announcements – we will call you in groups to board the zodiacs.  
~ 1630 – Long walkers to board zodiacs (deck 4).  
~ 1640 – Medium and short walkers to board zodiacs (deck 4).

1915      **Daily Recap** - Please join the expedition team in the **lounge** (deck 6) for our daily recap and briefing for tomorrow's activities.

1930      **Dinner** is served in the **dining room** (deck 4).



Around Spitsbergen, in the realm  
of Polar Bear & ice  
**Monday 15<sup>th</sup> August 2022**  
**Kapp Waldberg & Kapp Lee**

0715      **Wakeup call** – Good Morning

0730      **Breakfast** is served in the **dining room**.

***This morning we aim to land at Kapp Waldberg. A kittiwake colony surrounded by the beautiful scenery of Freemansundet. As well as an incredible landscape, the landing is a great location for Svalbard reindeer and Arctic fox.***

0830      **Kapp Waldberg Landing** – Please listen for announcements – we will call you by deck to board the zodiacs.

~ 0830 – We welcome the RED group to board zodiacs

~ 0840 – We welcome the BLUE group to board zodiacs

1230      **Lunch** is served in the **dining room**.

***This afternoon we hope to land at Kapp Lee – the site is home to beautiful Arctic tundra, a hunter cabin and (sometimes) walrus.***

1400      **Kapp Lee Landing** – Please listen for announcements – we will call you in groups to board the zodiacs.

~ 1400 – We welcome the BLUE group to board zodiacs

~ 1410 – We welcome the RED group to board zodiacs

1830      **Daily Recap** - Please join the expedition team in **the bar** for our daily recap and briefing for tomorrow's activities.

1900      **Dinner** is served in the **dining room**.



Around Spitsbergen, in the realm  
of Polar Bear & ice  
Tuesday 16<sup>th</sup> August 2022  
Hornsund  
Gashamna & Burgerbukta

0745 Wakeup Call

0800 Breakfast is served in the dining room.

*This morning we aim to land at Gashamna – one of Svalbard’s oldest whaling sites and home to an ‘Arc of Meridian’ research station. During the landing, we will take a guided walk to view the cultural remains and surrounding flora. We also plan to offer a polar plunge this morning. Please wear your swimming clothes under your outdoor gear – we will provide the towels.*

±1030 **Gashamna Landing** – Please listen for announcements – we will call you by colour group to board the zodiacs.

~ 1030 – We welcome the BLUE group to board zodiacs

~ 1045 – We welcome the RED group to board zodiacs

1300 Lunch is served in the dining room.

*This afternoon we hope to zodiac cruise Burgerbukta – a beautiful fjord within Hornsund, with towering mountains, waterfalls, and icebergs.*

±1530 **Burgerbukta Zodiac Cruise** – Please listen for announcements – we will call you by colour group to board the zodiacs.

~ 1530 – We welcome the RED group to board zodiacs

~ 1545 – We welcome the BLUE group to board zodiacs

1830 **Daily Recap** - Please join the expedition team in **the bar** for our daily recap and briefing for tomorrow’s activities.

1900 **Special Arctic Dinner** is served on **the Heli deck** – behind the bar. Dress warmly!

0715      Wakeup Call

0730      **Breakfast** is served in the **dining room**.

***This morning we aim to land at Bamsebu - a richly vegetated bay full of birds, flowers, and thousands of beluga whale bones. During this landing, we will offer a guided walk to view the cultural remains and surrounding flora.***

±0900      **Bamsebu Landing** – Please listen for announcements – we will call you by colour groups to board the zodiacs.

~ 0900 – We welcome the RED group to board zodiacs

~ 0910 – We welcome the BLUE group to board zodiacs

1230      **Lunch** is served in the **dining room**.

***This afternoon we hope to land at Ingeborgfjellet – visiting the historic huts of ‘Camp Miller’ with good chances to see reindeer, arctic fox, and auk species. This will be a perimeter landing, where you can walk freely between guides. At the end of this activity, we plan to offer a polar plunge. Please wear your swimming clothes under your outdoor gear – we will provide the towels.***

±1430      **Ingeborgfjellet Landing** – Please listen for announcements – we will call you by colour groups to board the zodiacs.

~ 1430 – We welcome the BLUE group to board zodiacs

~ 1440 – We welcome the RED group to board zodiacs

±1745      We will collect your **rubber boots** in the **lecture room** on deck 3.  
We will call you by colour groups. Please listen for announcement.

1830      **Captains farewell** - Please join the captain and the expedition team in the **bar** for our final farewell and trip slideshow.

1900      **Dinner** is served in the **dining room**.



Around Spitsbergen, in the realm  
of Polar Bear & ice  
Thursday 18<sup>th</sup> August 2022  
Longyearbyen - Disembarkation

- 0700      **Wakeup Call**
- 0715      Please leave your **luggage** outside your room before 0715 for collection and transfer to the pier.
- 0730      **Breakfast** is served in the dining room.
- 0900      **Disembarkation** – Time to say goodbye! Please make your way to the gangway to disembark Ortelius.

***If you are staying in town, please pick up your luggage from the pier and take it with you.***

***If you are flying out in the afternoon, please ensure your luggage has a green ribbon on and leave it at the pier – this will be transported to the airport for you.***

***A bus to the airport has been arranged to take you to the airport – it will depart from the town centre (where it drops you off) at 1130.***

*On behalf of the Captain and crew we thank you for sailing with us and hope you have enjoyed your voyage with us aboard Ortelius.*

***Safe travels home and we hope to sail with you again!***