



Exploring Northern Svalbard, Kvitøya and Eastern Svalbard
11th - 20th 2022
On board
M.V. *Plancius*



MV *Plancius* is named after the Dutch astronomer, cartographer, geologist and minister Petrus Plancius (1552-1622). She was built in 1976 as an oceanographic research, hydrographic and intelligence vessel for the Royal Netherlands Navy named Hr.Ms. *Tydeman*. The ship was in service with the Royal Netherlands Navy until 3 June 2004. After the end of the Cold War, she became surplus to requirements and was purchased by Oceanwide Expeditions in December 2006. Between 2007 and 2009 the ship was completely overhauled and converted into a 110-passenger expedition ship. *Plancius* is 89 m (267 ft) long, 14.5 m (43 ft) wide and has a maximum draught of 5 m (20 ft), ice class 1D, top speed 12+ knots and three diesel engines generating 1230 hp each.

Captain Evgeny Levakov

and his international crew

of 49 sailors

Chief Officer	Maikel Overbeeke	(Netherlands)
2 nd Officer	Yaroslav Pyetukhov	(Ukraine)
3 rd Officer	Nino Cizmic	(Kroatia)
Hotel Manager	Aleks Lebedev	(Ukraine)
Sous Hotel Manager	Thijs de Lint	(Netherlands)
Head Chef	Ivan Yuriychuk	(Ukraine)
Sous Chef	Sergey Skliyarov	(Ukraine)
Ship's Doctor	Martin Kriz	(Sweden)
Expedition Leader	Ali Liddle	(UK)
Assist. Expedition Leader	Andreas Alexander	(Germany)
Diving-Guide	Henrik Enckell	(Sweden)
Diving-Guide	Tanya Bayer	(Germany)
Expedition Guide	Adrian Wever	(Netherlands)
Expedition Guide	Ross Wheeler	(UK)
Expedition Guide	Kamila Oliver	(Poland, Sweden)
Expedition Guide	Christiaan Luteijin	(Netherlands)
Expedition Guide	Adam Burke	(UK)
Expedition Guide	Chloé Maréchal	(France)

Day 1 | Thursday 11 August 2022 | Longyearbyen

08.00 hrs | Position: 76.14 6N, 014.56.5E | Weather: Overcast | Air temp: +11 Celsius | Wind NW 3 Water temp: +9 Celsius



In the afternoon passengers started to arrive at what can truly be called “an authentic site”: the Longyearbyen coal harbour. It is about to be closed as coal mining at Svalbard’s only surviving mine – supplying the local power plant - will cease in a few years’ time, the coal to be replaced by a more environmentally- friendly fuel.

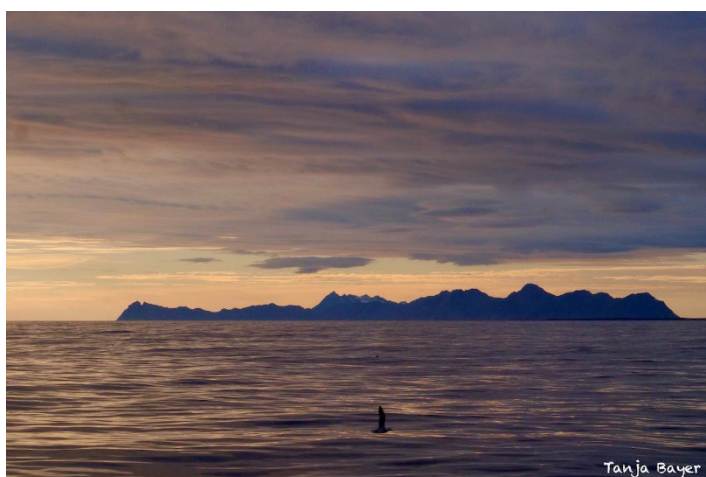
Once on board the passengers started to get acquainted with the ship and were soon invited to a general introduction. A safety briefing was followed by an “abandon-ship” exercise:

the alarm signal sounded, we took our life belts up to the lounge and inspected the lifeboats.

After a welcome speech by our Captain Evgeny we all raised a toast to a good cruise and Ali outlined our plans for the voyage ahead. It was a true expedition, and we were warned to be prepared for anything.

Then it was time to enjoy the dinner prepared by the chef and his team.

Most of us retired early after a long day’s travelling, but some hardy passengers enjoyed the sight of glaciers at Prins Karl’s Forland well into the night.



Day 2 | Friday 12 August | Raudfjord - Alicehamna & Buchananhalvøya

08.00 hrs | Position: 79.48.4, N,010.53.3E | Weather: Overcast | Air temp. 6 Celsius | Wind N6 | Water temp. 2 Celsius



During the night *Plancius* sailed from Isfjorden along Prins Karls Forland, on Svalbard's west coast, into Raudfjorden, the westernmost fjord on the north coast of the island of Spitsbergen. In the morning we were given the mandatory zodiac briefing and the Polar-Bear safety briefing. Polar bears can be found anywhere on shore in Svalbard, and we needed to be prepared for what would happen if we were to meet a bear on shore.

Our first Plan A for the morning was to do a zodiac cruise in Hamiltonbukta, where a large glacier reaches the sea but the swell conditions at the gangway were not safe for disembarkation, so we continued further into the fjord to reach more shelter and calmer conditions.

We anchored off a landing area known as Alicehamna and, after the staff scouted the area, we were now prepared for our first landing. There was an old trapper's hut near the landing site which belonged to a Swedish trapper who was known as Stockholm Sven and his grave is up on the top of the small peninsula. The hut is still equipped for emergency use and we all had a chance to look inside but the idea of spending a winter there did not exactly appeal to everyone...

At the landing site we divided into groups with long walkers heading up to the top of the peninsula with the medium walkers and leisurely walkers following on behind. During the walks the guides gave talks on various subjects of interest including the plants and the history of the area. It was a good first landing here on the northern part of Spitsbergen.



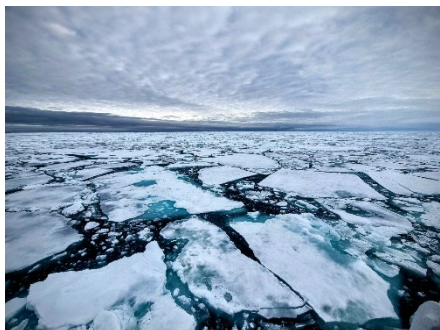
The afternoon found us slight deeper into the fjord at Buchananhalvøya ("halvøya" meaning peninsula) where, once ashore on a sandy beach the long walkers set off for a long walk towards the peak above the landing site. They were soon followed by two groups of medium hikers. Going up, at times passing rock fields, we were rewarded by excellent views of a lake and of Ayerfjorden. It was quite windy, but visibility improved during the afternoon and by the time we were making our way back to the landing site the sun managed to pierce through the clouds, which produced splendid light on the glaciers across the fjord and the mountains above.

What a great first day here in Raudfjord!



Day 3 | Saturday 13 August 2022 | Cruising the pack ice

08.00 hrs | Position: 81.25.0N, 008.26.8E | Weather: Fog | Air temp. + 5 Celsius | Wind ENE 2-3 | Water temp: + 6 Celsius



At 0645, as predicted, we entered the pack ice and although it was raining a little the visibility was good, and the guides began searching the ice for any signs of a polar bear. In a white landscape this is always a challenge but there was determination all round and it very soon paid off. Some passengers were still having breakfast when at 0845 the first Polar bear was reported. What a great start to the day in the pack ice! Captain Evgeny did a skillful job of navigating into the ice and the bear walked towards us for a while and then sat in full view of the ship and then lay down and went to sleep. It was a young male and was in good

condition so obviously very relaxed even with a blue ship nearby. With binoculars and telephoto lenses, we got good views and photographs.



After a while we left the bear to sleep and continued with our navigation and search. The experience of being in the pack ice is unique and many of us enjoyed time on deck or in the lounge just watching the icy seascape float past.

In the afternoon Chloé gave a lecture on Polar bears in which she told us about the way of life of these polar wanderers and we continued our navigation. With fine weather conditions our hotel manager invited us to the outside deck to celebrate our day with a 'Hot Toddy' of apple juice and whiskey which was enjoyed by us all

Another Polar bear was spotted at a very long distance at 17.00 and the captain once again tried to navigate towards it but it was always moving away from the ship and so we decided to leave it to its icy wanderings and turn our track towards the south once again. The Farthest North we reached was 081'48.3"N, 009'45.032"E.





Day 4 | Sunday 14 August 2022 | Phippsøya and Karl XII

08.00 hrs | Position: 80.42.3N, 020.19.0E | Weather: Partly cloudy | Air temp. + 10 Celsius | Wind NW 2-3 | Water temp. + 8 Celsius



Overnight we had sailed towards the Seven Islands and early in the morning four expedition staff went to scout for bears at Phippsøya, our next destination. This is often quite a 'bearly' place, but extensive scouting showed that it was safe to land.

Phippsøya is one of the Sjuøyane, the Seven islands to the north of Svalbard. It was named after John Phipps, the leader of the British Royal Navy expedition that discovered the islands in 1773.

The landing site was on the sandy beach of Isflaktbukta and the long hikers went ashore first to begin their exploration of the area with Adam and Ross. They were followed by medium and leisurely hikers, who each set off on their respective walks. A very small hut on the beach was inspected from the outside only as it was thoroughly locked and protected against polar bears. Sunshine lit up the islands, which are the product of continental uplift after the disappearance of the glaciers. The island still rises about 1 cm per year. The raised beaches we saw are evidence of this process, which was explained by the guides. Arctic Skuas flew around but left us alone as were not approaching their nest.





Having returned, and after a good lunch, *Plancius* headed for Karl XII-øya, a longish, narrow island consisting of distinctive black rock. The Kongsberget (King's Mountain, 105 metres) is a distinctive feature. Our plan was to make a zodiac cruise around the island, but for safety reasons – too high a swell- the cruise was called off: boarding the zodiacs and getting on the ship again, plus a good chance of getting very wet at sea were the reasons.

A most enjoyable happy hour, however, quickly made us forget this.



Day 5 | Monday 15 August 2022 | Kvitøya and Isispynten

08.00 hrs | Position 80.05.4N, 031.20.6E | Weather: Cloudy | Air temp. + 4 Celsius | Wind ENE 3 | Water temp. +6 Celsius



A dense fog had settled over Kvitøya (White Island) when we arrived there at 0700 in the morning. The cruise was near Andreéneset, the site where the unfortunate Andréé expedition met its end after their balloon crashed on their way to the North Pole in 1897. Their remains, including logbooks and films, were found by a Norwegian expedition in 1930.

In spite of the fog, we boarded the zodiacs, and sailed off, staying closely together. At times apocalyptic scene we sailed towards the Walrus colonies on the rocks to the North of Kvitøya with strong currents and tides, thick fog and the strange noise of walrus all around. As we got closer to the island, we were met by groups of up to 20 Walrus swimming out to forage for their favourite meal consisting of clamshells and mussels. In the fog their white-yellowish teeth made them clearly visible. Their sounds could be heard. When we were moving into a small bay the sun finally broke through the fog revealing the rocks with Walrus and their swimming companions in splendid sunlight. Photographers “had a go” at the Walrus once again.



Ashore a Polar Bear was spotted, perhaps on the prowl for Walrus, but too far inland to be seen clearly. *Plancius* had disappeared in the fog when we sailed towards Kvitøya, but now gradually appeared like a magic, ghost ship through the lifting fog. At the same time the lower part of Kvitøya's distinctive ice dome revealed itself. The ice dome rises up to some 400 metres. There are three places on this 700 square-kilometre large island where one can land, weather and Polar bears, of course, permitting.



Once back on Plancius coffee quickly restored our temperature. A second Polar bear was seen far inland. What an amazing adventure here at the 'White Island'.

After we had heaved up the anchor, we set sail back towards Nordaustlandet and with beautiful sunny conditions it was a lovely afternoon to be out on deck. As Kvitøya disappeared over the horizon we started to see some whale blows ahead and as we got closer it was identified as a Humpback whale. Captain Evgeny

did a great job of slowly navigating the ship and we had lovely view of the whale as it was breathing at the surface and then showing its tail fluke on a deeper dive down for food. What a lovely encounter!

Later in the afternoon we arrived close to the glacier and the boats were lowered for a zodiac cruise at Isispynten: a smooth sea and excellent weather made for a very nice trip. Isispynten is new on the map: as the glaciers are retreating the moraines stand out like new islands. A cruise was made between this new "land" and the glacier, with the sun producing beautiful light on Austfonna, the third largest ice shield in the world. It covers some 8,500 square kilometres.

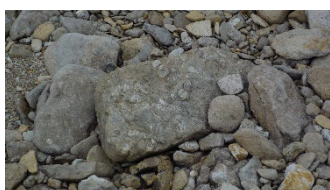


Day 6 | Tuesday 16 August 2022 | Vibebukta and Torrellneset

08.00 hrs | Position: 79.21.9N, 022.26.2E | Weather: Cloudy | Air temp. + 7 Celsius | Wind WSW 4 Water temp. + 5 Celsius



The vast emptiness of Vibebukta, the goal of this Tuesday morning's landing, faced us on waking up. Vibebukta borders a large polar desert, surrounded by the remains of the glaciers of Nordaustlandet. There is very little precipitation. The only water comes from some small rivulets running towards the sea from the hills. This is where some moss grows. Otherwise, the odd depression where water collects may allow sparse vegetation. Inland, old whale bones provide nutrition for some vegetation. These whale bones were once washed up on the shore, but continental uplift, the raised beaches, have put these bones far inland.



On arriving ashore our attention was drawn by the numerous fossils on the beach as well as inland. These are of Jurassic origin. The harsh climate could be deduced from the countless shattered stones: any crack, no matter how small, is penetrated by water. Water expands when freezing and, in the end, it will reduce any kind of stone to rubble.

The usual groups set off, the long hikers walking as far as the hills inland. Seen from the beach the land seemed to swallow up the walkers.



The walk up alongside the small stream proved to be a fascinating walk-through geological history. There were thousands of fossils from when this area was much lower and made up the seabed and at the top of the valley, more than a kilometre from the sea, there were whale bones, still fully intact. The most interesting find of the day near one of the hills was a very well mummified Polar Bear, partly buried, its skin brownish caused by water running over the skin, and its teeth still remarkably intact. This polar desert had proved to be an incredible place to walk and experience the history of this landscape over millions of years.

In the afternoon we sailed towards Torellneset, which is a regular walrus haul out. As we approached, we could see a few individuals on the point but not quite the numbers that had been reported to Ali the previous day. It was a windy afternoon, but conditions were still workable at the gangway, so we went in two shifts of 50 passengers each walked carefully and very disciplined towards the group of Walrus. As the wind was not coming from the direction of the Walrus, we were spared the smells emanating from this pile of blubber.



Day 7 | Wednesday 17 August | Sundneset and Kapp Lee

08.00 hrs | Position: 78.12.2N, 021.06.7E | Weather: Overcast | Air temp. + 7 Celsius | Wind NW 4 | Water temp. + 5 Celsius



As we arrived at the entrance to Freemansundet we found ourselves in fog once again and with no visibility of the shore we cancelled our planned landing at the kittiwake cliffs of Kapp Wahlberg and Plancius sailed on down Freemansundet. It proved to be a good decision as, further to the west we found much clearer conditions and decided to approach the anchorage off Sundneset. The staff were on the bridge to scout the area and very soon a polar bear was spotted lying on the hillside above the landing site. Sadly, there

would be no landing here, but Ali decided to offer a zodiac cruise to see what else we could find. There was quite a lot of current at the gangway and conditions were a bit splashy, but we wrapped



up and headed out and did a zodiac cruise along the dolorite rocks, spotting the occasional reindeer and even a bearded seal in the



water. As we navigated around the coastline, we had the amazing sight of a mother Polar bear and her 18-month-old cub on the sheltered rocky hillside which we were to observe and photograph.

The female had been fitted with a collar which is used by scientists to track their movements around Svalbard, and she stood watching us from the rocks while her cub lay sleeping on the hillside above.



After a while she walked with her cub to the top of the slope and could be seen eating the remains of what was probably a reindeer before, she and her cub lay down once again to rest. These bears have been seen in this area throughout the summer and will not have been able to feed on their usual food of seals so conserving energy is the most important thing for them as they wait for the winter and sea ice to return. We soon left them to their sleep and headed back to the ship to warm up and dry out!

During lunch we sailed across Freemansundet where we planned to land at Kapp Lee. Once again, staff went out to scout around the headland to ensure it was safe and bear free and as we started to disembark the rain started to fall and this was to remain with us for the whole afternoon. We landed on a small beach near some



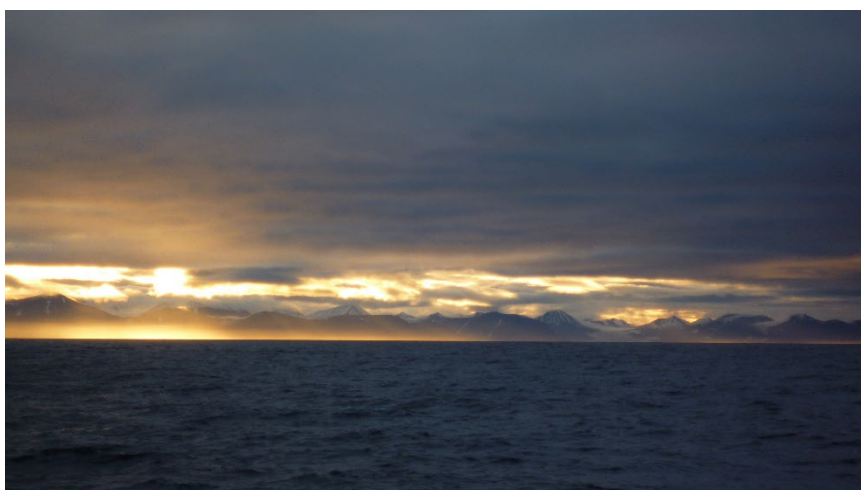
Pomor remains and could also see some walrus on the beach nearby. The long hikers headed off first and had some great views of some male reindeer on the slopes. They were in prime condition with huge antlers and were very relaxed about us passing by. They certainly weren't bothered by the rain! Must be Raindeer...

The landing and walks were definitely for the hardy ones as rain and wind "waterblasted" us incessantly. The long hikers managed to make it up to the ridge for views to the interior of the island of Edgeøya but with the rain lashing down it was a short stop at the top!

Everyone else explored the tundra area finding more reindeer and then making their way down to the beach and the collection of huts where there was a small group of walrus were hauled out on the sand. They did not seem to be bothered by the weather at all and just lay there snoozing and just occasionally lifting their head to look at us. The three huts, no longer occupied by hunters and trappers, made for some scenic photography.

Quite wet and chilled to the bone we returned to ship to warm up and find out our plans for the next day as through the night we would sail around the southern tip of Spitsbergen.

Rain, rain, rain! And wind, wind, wind. But... Very happy smiles!!!



Day 8 | Thursday 18 August | Burgerbukta & Gåshamna

08.00 hrs | Position: 76.48.9N, 015.12.5E | Weather: Overcast | Air temp. + 8 Celsius | Wind SSW5 | Water temp. + 6 Celsius



Ali woke us up in the morning we already had some beautiful views of the 'horn' of Hornsund with some light mist on the top but the steep cliffs clearly visible. The plan for the morning was to explore Vestre Burgerbukta by zodiac, up to Paierlbreen so the staff launched the zodiacs and began to load guests ready for the cruise. 5 zodiacs with passengers were launched, but soon after the rain started, a dense fog descended in the fjord and wind increased to 28 knots. In these conditions Ali had no option but to cancel the cruise and head back to the ship with some very wet passengers!

The rest of the morning we enjoyed the beautiful Hornsund, its mountains and the occasional rainbow. Splendid light lit up the glaciers, with dark clouds as a background. We passed Gnålodden, beneath Sofiakammen, where in the 1930s Wanny Wolstad, Norway's most famous female trapper, wintered as a hunter, a few seasons even with her children. The wind was still strong even in the shelter of the fjord, but we hoped we would find some more protection in the bay at Gåshamna.



The Captain did an great job of navigating to an anchorage



between the wind coming from the fjord and katabatic winds coming from the glacier inland and we were able to start with the zodiacs. It wasn't an easy landing with gusts often reaching 45 knots, but the staff and crew did a great job of getting us ashore for our landing. The long hikers headed around the coast and started their exploration near the Pomor remains. Pomors were Russian hunters from the area around the White Sea, going

to Svalbard in the 17th and 18th century. They took from nature what nature could yield, thus not extinguishing natural resources. We could see the outline frames of their huts and the bricks left from their cookers. They made themselves comfortable while they were here and even had a sauna and blacksmiths shop.



The medium hiking groups followed but also went to visit the British whaling stations on the beach. Numerous whale bones here are testimony to their hunting activities. Moss around the whale bones grows on nutrients, even after so many years, being released from the bones.

Mother Nature was playing tricks with us again: while on the beach wind increased at times to 48 knots and this, combined with the odd torrential shower made us feel like real Arctic explorers.

Back on board the ship remained at anchor while we had our Arctic BBQ which of course had to be indoors in such wet and windy weather, but it was a great evening of fabulous food from the Galley team and dancing and singing in the dining room.

Our overnight navigation to Isfjord was always going to be a bit windy and, with waves and swell hitting us as soon as we left Hornsund most people retired early to their cabins and were rocked to sleep!



Day 9 | Friday 19 August | Tempelfjord and Bjornahamna

08.00 hrs | Position: 78.21.4N, 016.10.2E | Overcast | Air temp. + 7 Celsius | Wind SW5 | Water temp. + 9 Celsius



After a rather bumpy night with a SW gale 6/7 we arrived in Sassenfjorden. Our plan for this morning was to land at Villa Fredheim, once home of the famous Norwegian hunter Hilmar Nøis. Together with his wife he overwintered here for 38 years until he retired in 1963.

However, as things go here up North, man does the planning and nature decides. Ali and the team headed ashore to prepare for the landing but as they got towards the beach, they encountered heavy swells and waves crashing on the shore which would have made transfer to the beach impossible and unsafe, so the landing had to be called off. Instead, we sailed up to Tunabreen and Von Postbreen, getting good views of these glaciers that spill down into the fjord.



Thankfully, in the afternoon we managed to find some shelter from the wind and swell in the bay of Bjornahamna. The Captain, once again took us close to a great anchorage and we had only a short ride to shore where we landed by some huts, one a hut once owned by the trapper Hilmar Nøis another hut owned by the Longyearbyen skidoo club. Andreas led the long hikers up the valley into the mountains where conditions were steep and rocky underfoot and very wet and windy. They

battled bravely for a while to see how far up they could go but were beaten back in the end by the wind. The medium hiking groups made it to a small cairn and had lovely views over the fjord and the leisurely walkers explored the shore and the huts in the area. Once again it was the weather that was one of the main features of the landing, but we still enjoyed our last visit on shore and we even had 4 brave souls wanting to get colder and wetter by taking a 'Polar Plunge'. They were very brave souls indeed!



Back on board we dried out and warmed up and it was time to meet in the Lounge for Captain's Cocktails, a chance to meet with our Captain once again and toast the success of our voyage. It has been a voyage that took us far north into the pack ice and far to the east to the island of Kvitøya. We have seen polar bears, walrus and reindeer and experienced some of the worst weather that Svalbard had to offer in August, but we have come through it all with a smile and have some very happy memories of our trip! Cheers everyone!

We came alongside the cold pier at 2200 and some guests left just after midnight to head for their flights home.

Day 10 | Saturday 20 August | arrival back into Longyearbyen

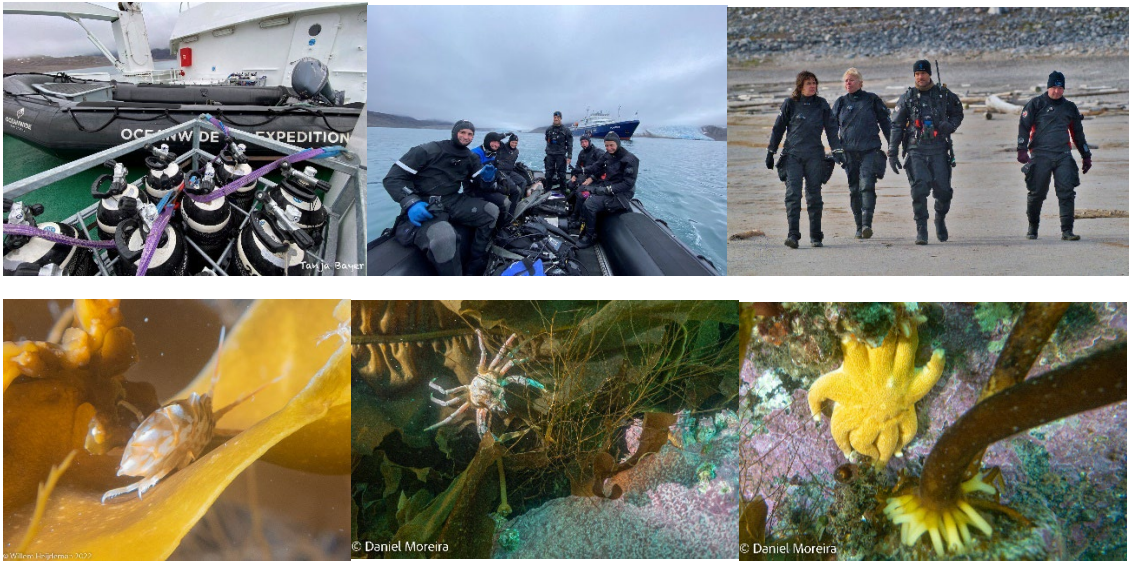
GPS 0800 position: 78°13.8' N 015°36.2'E (Harbour Longyearbyen)

We had our final wakeup call from Ali and, after breakfast with our luggage waiting for us on the pier and the buses arriving it was time to say goodbye to The Little Blue Ship Plancius and to the staff and crew that have looked after us so well for the last 9 days. It has been a fantastic voyage!



On behalf of Oceanwide Expeditions and all the staff and crew on board we would like to thank you for travelling with us and we hope to see you on board again sometime in the future.

And what the divers saw.....!



Well done to the divers for their brave exploration of the cold Arctic waters!

Plancius 12 Dive Log 11th August to 20th August 2022



Svalbard Norwegian Arctic

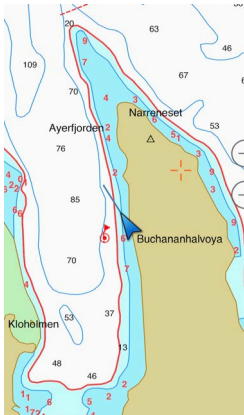
Dive Team: Dive Team Leader Henrik Enckell, Diveguide Tanja Bayer

Divers: Esther, Marieke, Natasja, Dan, Franz, Willem

After getting onboard of MV Plancius we tried to find our way around the ship and explored the different decks. After the mandatory safety briefing we were on our way to circumnavigate Spitzbergen, including the very eastern island Kvitøya. After dinner the muck boots were handed out and the ship was rocking us in sweet dreams.

12th August 2022

Dive1 : Buchananhalvøya - 79°41.495'N / 012°06.346'E



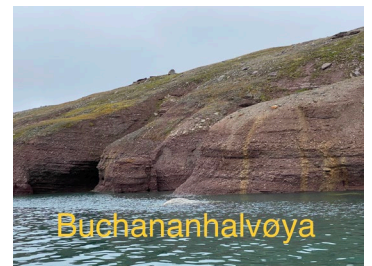
For the first time we started our diving operations and everybody was well prepared. We sorted out 2 groups of 2 and 3 divers. packed the Zodiacs and off we went, boarding the divers from the gangway. The dive teams checked out their equipment, weights and buoyancy.

After everybody was comfortable, they went off for a nice dive.

A lot of small stuff was seen. They saw 2 sea angels, spider crabs, kelp, Jellyfish, shrimps, hermit crabs, red tunica, anemones and sea urchins . Visibility was not too bad, about 2-3m.

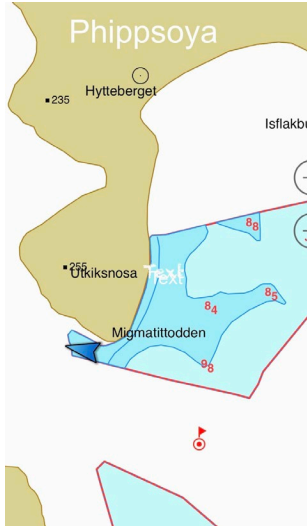
After 35 min. all divers surfaced and felt happy about the first dive of the trip and for most of them the first dive in the Arctic.

After the dive most of the divers were cold and got dropped off at the ship. Dan decided to go ashore and explore the landing site at



Buchananhalvøya. The others changed and got warm with a hot coffee or tea and enjoyed the beautiful landscape of Raudfjord and Ayerfjorden. Several glaciers run down to the waters of the fjord. This was a successful Check Dive and we are ready for more adventures.

14th August 2022



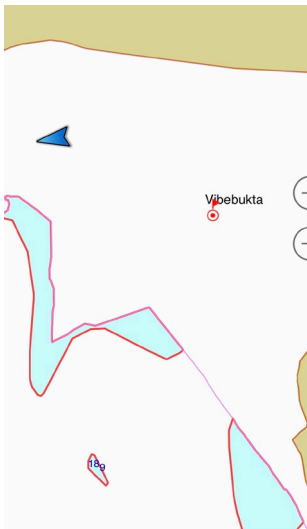
Dive 2 : Migmatittodden / Phippsøya - 80°40.293'N / 020°50.031'E

After one successful day in the ice, we arrived at the Seven islands in the morning. Plancius was anchoring right in front of Isflakbukta / Phippsøya. as we had one more dive team member to do her Check out dive, we decided to dive on the rocky slope of Migmatittodden, which is at the southwestern corner of Phippsøya. It was hard to get to the rocks, because of the big leaves of the kelp. But in the kelp there was a lot of life. The divers were happy about several nudibranches, shrimps, and also some small fish rushing through the kelp. Visibility was now up to 5-6m. After the dive there was enough time to go ashore with Henrik and go for a short hike around the trapper hut and along the beach.



The skull of a polar bear was seen. The sad part of the hike was a lot of plastic trash along the beach. The other groups already had collected a big bag full of plastic, nets and other rubbish.

16th August 2022



Dive 3 : Vibebukta / Nordaustlandet - 79°22.014'N / 022°26.155'E

In the morning we reached Vibebukta after sailing along the ice cliff of Austfonna. The total length of this ice cliff is 160km. After we ankered, we decided to look for a nice piece of ice to dive on. On shore the bay is a very good example for the polar desert. Lots of rocks, former seabed and only some streams seem to show some live on this moonlike panorama. We found a piece of ice, which was not grounded, but shallow and stable. The visibility did not look too good, but the divers still tried their luck and submerged at the iceberg. Towards the ground the visibility increased a bit and in the ice shrimps, jelly fish and other plankton was found. After half an hour they rounded the berg about 8 times. Now we looked for a nice iceberg to climb on and make some pictures. After that the group decided to go on land and have a look around. There



was a polar bear carcasse and also some whalebones. The scenery was very special and the real „Polar Desert“!

17th August 2022

Dive 4 : Sundneset / Spitzbergen - 78 12.087°N / 021°01.377°E



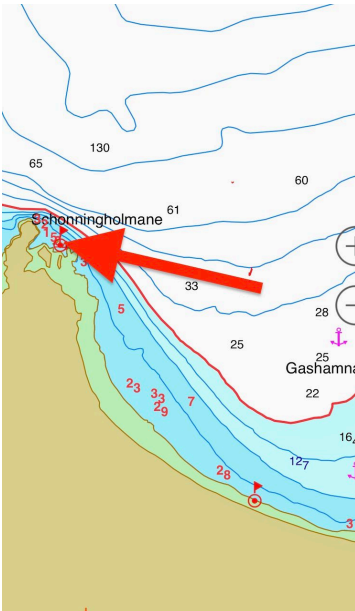
After we reached the eastern entrance of Freemansundet in the morning, we had to change our plans. Fog with very poor visibility did not allow a landing at Kap Waldburg. So we sailed through Freemansundet to Sundneset. On arrival a polar bear was seen up the hill. While the others went on a Zodiac cruise along the shore, we went on an exploration dive on the western side of the hut.



Exploring that area with the Zodiac we found 2 polar bears - a mum and her 18 month old cub - on a slope. Keeping some distance, we went in the water. Ground was at 7m and some single kelp around. Visibility was not great, but quite cold water from the East - Spitzbergen-Stream.

18th August 2022

Dive 5 : Schonningholmane / Gåshamna - 76°56.934' N / 015° 47.078° E



After trying a zodiac cruise at Burgerbukta in the morning, we had a nice ships cruise around Brepollen, the very end of 30km long Hornsundet. We had a look at beautiful Hornbreen, Storbreen and many more glaciers. then we headed towards our afternoon landing spot - Gåshamna. On the westside of the bay are some smaller rocks called Schonningholmane.



The wind was blowing quite strong, but we tried to get there and explore. In the dry-suits we were protected well, more than the other gets, going for a landing at the old whaling station in the rain. The dive spot did not have much depth and the stones on the ground were covered with kelp. Because of the strong swell, it was going back and forth and sometimes you got a glimpse of a crab, or a snail and other small stuff. After 20 min. we decided to end the dive, so we do not become seasick. After the dive we went ashore to have a look at the remains of

an english whaling station and of the pomores.

At this time we did not know that this was our last dive.

On our last day in Templefjord the water was so murky, winds were blowing and there was no more chance for a nice dive!



Willem Heijdeman



Willem Heijdeman



Willem Heijdeman



Daniel Moreira



Daniel Moreira

Daniel Moreira



Daniel Moreira

Daniel Moreira

Svalbard 2022

M/V Plancius 11/08 – 20/08

- 1: 11/08 Longyearbyen - Embarkation.
- 2: 12/08 Alicehamna, Raudfjord – Landing
- 3: 12/08 Buchananhalvoya - Landing
- 4: 13/08 In Pack Ice
- 5: 14/08 Phippsøya - Landing + hiking
- 6: 14/08 KarlXIIøya – On anchor
- 7: 15/08 Andreeneset, Kvitøya – Zodiac cruise
- 8: 15/08 Austfonna – Zodiac cruise
- 9: 16/08 Vibebukta - Landing
- 10: 16/08 Torellneset - Landing
- 11: 17/08 Sundneset, Barentsoya - Zodiac cruise
- 12: 17/08 Kapp Lee, Edgeøya - Landing
- 13: 18/08 Burgerbukta – On anchor
- 14: 18/08 Gashamna - Landing
- 15: 19/08 Tempelfjord – On anchor + ship cruise
- 16: 19/08 Bjonahamna - Landing
- 17: 20/08 Longyearbyen- Disembarkation



Ali Liddle – Expedition Leader



Originally from the UK, Ali spent 15 years living in the Falkland Islands where she worked as a Primary school teacher both teaching out in 'camp' and at the school in Stanley.

Latterly, she was employed as Education Officer for Falklands Conservation and shared her time between classroom teaching and conservation. In 1997, she spent 9 months living on South Georgia where she ran the Post Office and took every opportunity to hike, ski and explore the surrounding peaks and coastline.

She has published three books to date: *Plants of the Falkland Islands* and two art and craft books for children using penguins and albatross as the inspiration. Ali is a keen runner, having completed three marathons in the Falkland Islands and two in the UK, and she also enjoys cycling, hiking and camping. Ali has been working on Antarctic and Arctic expedition cruises with Oceanwide for more years than she cares to remember and works on all of the Oceanwide vessels at some point during the year. She has recently relocated from Northumberland to the Isle of Skye where she is renovating a cottage and enjoying the hiking opportunities of the island.

Her particular interest is natural history and the wildlife, and she enjoys sharing her knowledge of and passion for the polar regions.

Andreas Alexander – Assistant Expedition Leader



Andreas started his career as one of the ‘bad guys’: As a mechanical engineer on fossil power plant construction sites.

Not completely convinced by that he continued in materials research to finally follow his fascination for polar research.

The direction was clear during the parallel studies in mechanical engineering and geology: North. Scientific drilling in the caledonic mountains in Sweden, volcanoes in Alaska and finally Svalbard.

Andreas lived almost three years there and studied Arctic Geology and Geophysics at the University Centre in Svalbard. Hereby he could regularly be found crawling and climbing in and under glaciers for his research.

Meanwhile Andreas is working as a PhD Research Fellow at the University of Oslo and spends his time in Norway, Svalbard, Greenland, Japan and Alaska. When he is not standing in the lecture room, sitting in his office or doing fieldwork in the Arctic, he works as an Expedition Guide in the Arctic and Antarctic. A job, where he shares his polar fascination with his guests and gladly talks about the life in polar sciences, glaciers and geology.

Henrik Enckell - Dive Team Leader



Henrik is an experienced dive instructor and rebreather instructor trainer. He was one of the first dive masters to bring tourists diving in Antarctica.

Henrik has been diving for over 25 years and as a Rebreather Instructor Trainer he is teaching all levels of recreational and technical diving up to Advanced Trimix CCR. He runs the IART (International Association of Rebreather Trainers) Regional Office for Northern Europe and is a member of the IART Board of Advisors.

Henrik is a keen wreck diver and has been involved in deep wreck expeditions all over the world. Some of the interesting wrecks he has visited are the WW2 disasters *General von Steuben* and *Wilhelm Gustloff* in the Baltic and *HMS Victoria* ("the vertical wreck") at 145 meters/475 feet off the Lebanese coast.

His interest for both the ocean and space has engaged him in projects with the European Space Agency (Mars500 project) and the SeaSpace Exploration and Research Society (Project Poseidon) among other adventures. He has a military background having served in peace keeping and peace enforcing missions in the Middle East and former Yugoslavia. He has also led dive expeditions in the Antarctic and Arctic regions during almost 20 years and he was one of the first persons to take people diving on expedition vessels in these remote, challenging and many times undived waters.

Henrik holds a M.Sc. degree in Electrical Engineering and is working in the automotive industry when not travelling to the polar regions. He has lived and worked in Tokyo, Japan for two years and he is currently living in India with his wife, his three teenage daughters and his 5-year-old son.

Tanja Bayer - Dive Guide



Tanja is at home in Oberursel, which is near Frankfurt / Main in Germany. She has been diving since 1990 and has more than 4200 dives. In Oberursel she is running her own Diving Center "TaWo Diving" since 1996.

As a Master Instructor and Course Director she teaches Diving and also trains Diving Instructors.

Her 'second' profession is being a Doctor in General Practice, Accident & Emergency and Diving Medicine.

She has been working as a ships doctor since 2009 in Antarctica and since 2015 also in the Arctic with Oceanwide Expeditions.

As a Dive Guide and Diving Expedition Leader she takes divers all around the world. Asked for her favourite dive sites, she mentions "Planeau Bay" in Antarctica. Cold water diving is really something special and challenging.

You have to be experienced and always aware of hypothermia. But it is a great feeling to touch an iceberg or to see all this colorful animals surviving in this harsh regions.

Aad Wever - Expedition Guide



With parents born in the small “Zuiderzee” villages in West-Friesland, the Netherlands it was only natural that an interest in the Dutch whaling history arose with Aad at an early age. In those days it was still politically correct to deal with whaling in the Dutch curriculum...

The first visit to the Arctic was a 10-day visit to the Norwegian island of Jan Mayen. The bleak volcanic island, the snow storms covering the black lava made a lasting impression, as did the journey back to Bodø in Norway aboard *M/V Lance* in gale force 12.

Svalbard followed quickly. Its history, nature, wildlife but above all the splendid light of the Arctic have produced a great fan of this very special part of the world. This year is Aad’s 12th season at Svalbard. Aad recently retired from teaching at Saxion University of Applied Science in Enschede, The Netherlands.

During this expedition cruise we hope to turn you into fans of the Arctic!

Ross Wheeler - Expedition Guide



Ross lives in a small town in Cornwall, which is located in the south western corner of the UK. As he grew up in a coastal town he has always been fascinated by marine wildlife and the marine environment.

Having completed an undergraduate degree and master's degree in environmental sciences / conservation biology at Plymouth University he then went on to use his passion and education to work as an environmental consultant and researcher in the coastal

and marine field.

This progressed into the offshore sector where he worked as a marine mammal observer and passive acoustic monitoring operator in the offshore seismic and renewable industry sectors. This role took him to a wide range of areas throughout the North Atlantic, Central Africa and Southern Africa where he conducted marine mammal and sea bird surveys aboard various survey vessels. After a few years in this industry he then moved into the environmental compliance side of the cruise ship industry where he continues to work for six months of the year today. Whether he is working on ships around the world, volunteering for conservation based organisations or travelling in his 'time off' he is constantly seeking opportunities to photograph wildlife in their natural environment.

Feel free to ask him any questions about marine mammals, seabirds or anything environmentally related with the shipping industry.

Kamilla Oliver – Expedition Guide



Kamilla has been fascinated by nature, snow and cold since as long as she can remember. Her first career, following a PhD in Physics, was in academia. Subsequently she worked as nuclear engineer in a nuclear power plant in Cape Town and later in Germany. But she was convinced that she was meant to be driving in another lane.

After her job in Germany was axed as aftermath of Fukushima nuclear accident, Kamilla decided to hold onto her passion and switch career. Her interests led her to work as ski instructor and lead educational adventure tours on both hemispheres. She

has been fortunate to travel to the high Arctic and took part in several skiing expeditions in Russia and Svalbard.

A lifelong interest in the Polar Regions has been rewarded by employment in Greenland. Kamilla has lived on a traditional Inuit settlement in East Greenland. She had an opportunity there to learn fishing and hunting techniques and building sledges and kayak. Greenland remains her favourite destination.

Kamilla also works in a variety of art genres, including painting, drawing, seal skin embroidery and photography. Her canvasses portray penguins and polar landscapes. She jokingly asserts she is a chionophile (from the Greek word chion meaning "snow", and -phile meaning "lover"). She finds inspiration in sharing nature experiences with others.

Christiaan Luteijn – Expedition guide



Christiaan is a passionate starter in the medical field and a life-long ocean lover at the same time. He enjoys exploring the cultural and scenic diversities of different countries, as well as to connect with the people he meets along the way.

He grew up in the southwestern coastal province of The Netherlands, Zeeland. For his studies, he moved to Amsterdam where he completed a three-year bachelor's program in medicine at the Vrije Universiteit. During this program, he took part in several exchanges and conducted research about health care onboard expedition cruise ships.

Currently, he is busy with his clinical rotations as part of his masters in medicine.

As a side project, Christiaan learned the Spanish language at the same university. Besides a sufficient level in Spanish, he is fluent in Dutch and English, but also able to express himself reasonably in French.

Last year, he was part of the medical team onboard m/v Hondius and worked as an expedition guide in the Antarctic as well. During these four months in the Antarctic, South Georgia, and the Falklands, he got interested and acquainted with becoming an expedition guide. As Christiaan would say: "I like to be challenged and am passionately hopeful to impact other people's lives positively. Another source of inspiration that gives me energy is the sea. So, it might not be surprising that the work of an expedition guide in polar regions appears very interesting to me. To be part of this Arctic expedition is a unique and much-appreciated opportunity in many ways!"

Adam Burke – Expedition Guide



Adam has always had a love of the outdoors and adventure, from an early age he dreamt of visiting exotic places and immersing himself in other cultures.

This love of the outdoors led him to work teaching adventurous activities and for over fifteen years this pursuit has given him the opportunity to live and work all over the globe. He has taught sailing in Australia, paddle sports on Europe's rivers and led expeditions in Africa.

After spending five years teaching white water safety & rescue and boat handling techniques to the fire brigade, he moved on to providing marine science support in Antarctica. He has spent over five years living between the Antarctic continent and the island of South Georgia, including overwintering twice.

Whilst providing science support he spent his time in Antarctica managing boating operations and helming RIBs for diving operations. This covered understanding environmental changes and its effects, wildlife monitoring and counting as well as water sampling for a long-term data collection.

Adam enjoys travelling with his partner who shares the same values and love of the outdoors. This has taken them from deserts to rain forests and ultramarathons in the mountains.

Chloé Maréchal - Expedition Guide



Chloé is a passionate diver fascinated by marine life and exploration. She earned a European master degree in Marine biodiversity and conservation and loves to share her expertise for the marine environment. In April 2013, she was selected as the 2013-14 European Rolex our world underwater scholar. She spent a year working side by side with current leaders in underwater fields, getting very different experiences in marine science and in the diving industry. Diving and science are not her only passion; she enjoys exploring new countries and discovering new cultures. She has been diving on all continents

and living in more than 20 countries.

Chloe now lives in northern Norway just above the polar circle. When she is not onboard, she can be found underwater: observing the ocean's inhabitants, searching for forgotten wrecks or mapping and exploring undiscovered underwater cave passages.

Martin Kriz – Ship's doctor



Dr Martin Kriz, senior consultant in surgery and full time member of American College of Surgeons FACS, completed his initial training in Lund Sweden at the University Hospital and subsequently, in Helsingborg County Hospital, where he specialized in cancer surgery and emergency surgery.

Currently he works in his own private practice and at the University Hospital in Lund Sweden.

Besides his specialization in surgery, he is also a specialist in Hyperbaric and Naval Medicine and a diving physician accredited by the EDTC (European Diving Technology Committee). He is also Specialist in Aero and Space Medicine, AME (aero medical examiner) accredited by the Swedish Transport Agency.

Dr Kriz has extensive surgical experience and has also worked as a surgeon internationally, in such places as Africa as head surgeon in an Kenyan rural hospital, jeep doctor for The Swedish Rotary Doctors, and in Afghanistan, where he spent a year as head of the Swedish military medical division within ISAF. He works as well as a diving physician for the Swedish Armed Forces. He worked as a surgeon in Bangladesh at Emirates Friendship Floating Hospital and at Friendship hospital in Shyamnagar 2019.

He has been invited to go to Mongolia in the autumn of 2013 and 2014 to operate and instruct local surgeons in surgical techniques.

Dr Kriz has been working as chief surgeon and SMO, senior medical officer, in St Helena, British Overseas Territories, on several occasions until recently one of the most remote places on earth. He is married and has one son. All his life he has been backpacking all over the world with his camera. He plays golf badly, skies downhill quite well and is a quite experienced scuba diver.



Around Spitsbergen

Kvitoya

Departure Longyearbyen

Thursday 11th Aug 2022

- 1600 **Welcome on board!** Your luggage should be in your cabin when you arrive. Please check carefully if you are missing any luggage and if there is luggage in your cabin that does not belong to you then please let one of the staff know. Please feel free to look around the ship.
Tea and coffee is available in the Lounge on Deck 5.
- >1700 **Mandatory Safety and Lifeboat Instruction** in the Lounge. **ALL PASSENGERS** are required to participate in this very important instruction.
- 1800 Departure from the pier.
- 1845 Please join us in the Lounge for an **introduction to the ship** from your Hotel Manager Alex Lebedev.
This will be followed by **Captain's Cocktails**, a chance to meet your Captain for this voyage and then you will meet with your Expedition Leader Ali Liddle. She will explain the plans for the coming days, and it will be a chance to meet with your Expedition Team.
- 1930 **Dinner** is served in the Restaurant on Deck 3 behind the reception desk.
Enjoy your meal.

Tonight we will be sailing in open water and expect the ship to move. Please make sure that all your valuables (cameras, computers, etc.) are properly stowed in your cabin to avoid accidents. Always use the railings and handholds when moving around on the ship, especially in rough seas. Always one hand for the ship and one hand for yourself. Thank you.



Around Spitsbergen

Kvitoya

Raudfjord

Friday 12th Aug 2022

- 0715 Wake up call from your Expedition Leader Ali.
- 0730 **Breakfast buffet** will be available in the Dining Room for 1 hour.
- 0845 **Mandatory Polar Bear safety briefing and Zodiac briefing** in the Lounge. All passengers must attend these briefings please.
- 1015 **Hamiltonbukta.** We will arrive in the beautiful fjord area known as Raudfjord. The geology is ancient Devonian Old Red sedimentary rock and there are 10 glaciers feeding into the fjord. We hope to take you on a zodiac cruise into Hamiltonbukta to view the glaciers and bird cliffs. Please dress warmly for the cruise.
- 1300 **Lunch Buffet** will be available in the Dining Room for 1 hour.
- 1430 **Buchananhalvoya.** We will sail further into Raudfjord and hope to land on the peninsula known as Buchananhalvoya. We will offer a series of hikes in the area where we will have views over the glaciers and the whole fjord system. When you are on shore please follow the instructions of the guides.
- 1900 **Recap and Briefing.** Please join the Expedition Team in the Lounge for a recap of our first day on Svalbard and to hear of our plans for tomorrow.
- 1930 **Dinner** is served in the Restaurant on Deck 3 behind the Reception desk. Enjoy your meal.



Around Spitsbergen

Kvitoya

Polar Pack Ice

Saturday 13th Aug 2022

During the night we will sail North towards the pack ice and hope to be approaching the ice edge at around 0730 in the morning. We will spend the day in and around the ice which is a truly unique and special environment to experience.

0730 Wake up call from your Expedition Leader Ali.

0800 **Breakfast buffet** will be available in the Dining Room for 1 hour.

Please wrap up warm and join the Expedition Team on deck and on the Bridge as we navigate along the ice edge and into the pack ice. If you are on the Bridge, please remain quiet as the Captain and Officers will be navigating in challenging conditions.

1230 **Lunch Buffet** will be available in the Dining Room for 1 hour.

After Lunch we will continue our exploration of the pack ice and may offer some lecture presentations in the Lounge during the afternoon, depending on our progress and the weather conditions.

1830 **Recap and Briefing.** Please join the Expedition Team in the Lounge for a recap of our day and to hear of our plans for tomorrow.

1900 **Dinner** is served in the Restaurant on Deck 3 behind the Reception desk. Enjoy your meal.

If we do find a polar bear in the ice please be quiet on deck, do not allow doors to slam and if you have tripods please be careful as you place them on deck.



Around Spitsbergen

Kvitoya

Phippsøya and Karl XII Island

Sunday 14th Aug 2022

- 0715 Wake up call from your Expedition Leader Ali.
- 0730 **Breakfast buffet** will be available in the Dining Room for 1 hour.
- 0845 **Phippsøya.** We hope to be able to take you ashore on Phippsøya, which is one of the Seven Islands to the north of Svalbard and will offer a series of hikes on the island to explore the unique environment of this northern island. On shore, please stay with your guides and listen to their advice and direction.
Long Hikers please come to the gangway first at **0845**.
Medium and Leisurely walkers please come to the gangway at **0900**
- 1230 **Lunch Buffet** will be available in the Dining Room for 1 hour.
- During the afternoon we will sail east towards Kvitoya and will pass by **Karl XII Island** on the way. Depending on weather conditions, we hope to be able to offer a zodiac cruise at the island but please stand by for announcements regarding our activities.
- 1830 **Recap and Briefing.** Please join the Expedition Team in the Lounge for a recap of our day and to hear of our plans for tomorrow.
- 1900 **Dinner** is served in the Restaurant on Deck 3. Bon Appetite!



Around Spitsbergen

Kvitoya

Andreneset, Kvitoya
Monday 15th Aug 2022

- 0715 Wake up call from your Expedition Leader Ali.
- 0730 **Breakfast buffet** will be available in the Dining Room for 1 hour.
- 0845 **Andreneset.** This morning we plan to take you ashore at Andreneset on Kvitoya. This is where we will find the memorial to Salomon Andre and his balloon team who perished here in 1897. Our landing will depend on the weather and the presence of polar bears on shore. If we cannot land, we hope to be able to offer a zodiac cruise along the shore.
This is very much an 'Expedition' morning, so please stand by for announcements regarding our activities
- 1230 **Lunch Buffet** will be available in the Dining Room for 1 hour.
- Expedition Afternoon**
Our activities this afternoon will depend on weather, ice and wildlife so please listen for announcements and be ready for anything that this remote part of Svalbard has to offer!
- 1830 **Recap and Briefing.** Please join the Expedition Team in the Lounge for a recap of our day and to hear of our plans for tomorrow.
- 1900 **Dinner** is served in the Restaurant on Deck 3. Bon Appetite!



Around Spitsbergen

Kvitoya

Vibebukta and Ardneset

Tuesday 16th Aug 2022

- 0715 Wake up call from your Expedition Leader Ali.
- 0730 **Breakfast buffet** will be available in the Dining Room for 1 hour.
- 0845 **Vibebukta.** In the early morning we will be sailing along the beautiful ice face of Brassvellbreen and will arrive at Vibebukta. The area here is classed as 'polar desert' and our morning activities here will depend upon the weather and ice conditions we find when we get there so please listen for announcements over the PA system.
- 1230 **Lunch Buffet** will be available in the Dining Room for 1 hour.
- TBA'** **Ardneset, Wahlbergoya.** This island is a known walrus haul out so we hope to be able to take a walk on shore and visit the walrus on the beach. To do this we need to be in groups of less than 50 people so we will take you in two groups. The first group, made up of the first 5 zodiacs will go straight to the walrus and spend some time with them before taking walks in the nearby area. The second group of the next 5 zodiacs will go for walks with the guides first before then spending some time with the walrus. Each group will get the same amount of time on shore. It is easy walking on beaches and low-lying hills and the scenery is beautiful.
- 1830 **Recap and Briefing.** Please join the Expedition Team in the Lounge for a recap of our day and to hear of our plans for tomorrow.
- 1900 **Dinner** is served in the Restaurant on Deck 3. Bon Appetite!



Around Spitsbergen

Kvitoya

Kapp Waldburg and Kapp Lee
Wednesday 17th Aug 2022

- 0745 Wake up call from your Expedition Leader Ali.
- 0800 **Breakfast buffet** will be available in the Dining Room for 1 hour.
- 0915 **Kapp Waldburg.** This morning we hope to be able to land at the bird cliffs of Kapp Waldburg on Barentsoya and explore the small canyon which is home to hundreds of Kittwakes. We will take you in groups up to the canyon and possibly up to the viewpoint over the canyon and Freemansundet.
- 1230 **Lunch Buffet** will be available in the Dining Room for 1 hour.
- TBA'** **Kapp Lee.** For our afternoon landing we hope to be able to take you ashore at Kapp Lee where we often see reindeer and where there are sometimes walrus on the beach near the trapper's huts
We hope to be able to offer our usual hikes with long hikers going up to the ridge above the bay and medium hikers exploring the tundra and historic Pomor remains.
- 1830 **Recap and Briefing.** Please join the Expedition Team in the Lounge for a recap of our day and to hear of our plans for tomorrow.
- 1900 **Dinner** is served in the Restaurant on Deck 3. Bon Appetite!

In the evening we will be sailing around the southern tip of Svalbard and in open waters. There will be some movement of the ship so please secure your belongings in your cabin.



Around Spitsbergen

Kvitoya

Burgerbukta and Gashamna, Hornsund

Thursday 18th Aug 2022

- 0745 Wake up call from your Expedition Leader Ali.
- 0800 **Breakfast buffet** will be available in the Dining Room for 1 hour.
- TBA **Burgerbukta.** This morning we hope to take you on a zodiac cruise in the scenic fjord of Burgerbukta, which is part of the large fjord of Hornsund. We will navigate the fjord towards Paierlbreen, the glacier at the end of the fjord and see what we can find on the way.
- 1230 **Lunch Buffet** will be available in the Dining Room for 1 hour.
- 1430 **Gashamna.** We hope to be able to take you ashore at Gashamna where we will find the oldest whaling station on Svalbard and also some Pomor remains. We will offer our usual hikes and aim to take the long hikers to the peak above the bay if the weather conditions allow. Everyone else will explore the beach, the Pomor remains and the stunning coastal scenery.
- 1830 **Recap and Briefing.** Please join the Expedition Team in the Lounge for a recap of our day and to hear of our plans for tomorrow.
- 1900 **Special Arctic Dinner is served!** Bon appetite!

In the evening we will be sailing along the western coast of Svalbard and in open waters. There will be some movement of the ship so please secure your belongings in your cabin.



Around Spitsbergen

Kvitoya

Tempelfjord and Skansbukta

Friday 19th Aug 2022

- 0745 Wake up call from your Expedition Leader Ali.
- 0800 **Breakfast buffet** will be available in the Dining Room for 1 hour.
- TBA **Tempelfjord.** This morning we hope to take you ashore at Fredheim in Tempelfjord where we will find the historic hut that belonged to the infamous trapper Hilmar Nois. We will offer the usual hiking groups to explore the tundra and surrounding area.
- 1230 **Lunch Buffet** will be available in the Dining Room for 1 hour.
- 1430 **Skansbukta.** For our final landing we hope to take you ashore at Skansbukta where we will spend some time on the beach and explore the surrounding area.
At the end of the landing, we will offer a polar plunge, a chance to swim in the Arctic waters around Svalbard. You bring the insanity and we will bring the towels!
- 1830 **Captains Cocktails.** Please join the Captain and your Expedition Team in the Lounge to toast our successful voyage!
- 1900 **Farewell Dinner is served!** Bon appetite!

For those of you on the SAS 02:25 night flight on 20th Aug, the bus will pick you up at 00:30. Please place your large check in luggage outside your cabin before 21:00 and we will make sure it goes onto the pier and onto the bus.



Around Spitsbergen

Kvitoya

Longyearbyen

Saturday 20th Aug 2022

0745 Your final wake-up call from your Expedition Leader Ali.

As you go to breakfast, please place your large check in luggage outside your cabin so that we can transfer it to the pier ready for your bus to the town.

0800 **Breakfast buffet** will be available in the Dining Room for 1 hour.

0900 Your bus will be ready to take you to town. Please make sure your luggage is on the pier and goes to the bus and then let the driver know which hotel you will be going to.

On behalf of Oceanwide Expeditions and the crew and staff of Plancius we would like to thank you for travelling with us on our voyage around Svalbard and East to Kvitoya. We hope you enjoyed your voyage and have many happy memories of polar bears, ice, wind, rain, swell and more rain!

Safe travels home!