



OCEANWIDE

EXPEDITIONS

Antarctica - Discovery & learning voyage

13th December – 23rd December 2022

M/V Hondius



Captain Toni Salo

and his international crew

Chief Officer: **Matei Mocanu**

Staff Officer: **Miia Johanna Holma**

2nd Officer: **Kirill Buriachek**

3rd Officer: **Don Buren**

Chief Engineer: **Sebastian Alexandru**

Hotel Manager: **William Barnes**

Assist. Hotel Manager: **Andrius Juodvirsis**

Head Chef: **Gaurav Bawa**

Ship's Doctor: **Emma Röttger**

Expedition Leader: **Pippa Low**

Assist. Expedition Leader: **George Kennedy**

Assist. Expedition Leader: **Chloé Maréchal**

Expedition Guide: **Szymon Niezabitowski**

Expedition Guide: **Charlotte Taplin**

Expedition Guide: **Julia Wellner**

Expedition Guide: **Hong Li (Rose)**

Expedition Guide: **Carina Ketterer**

Expedition Guide: **Tiphonie May**

Expedition Guide: **Julia Angermeijer**

Expedition Guide: **Mikhail Barabanov**

Expedition Guide: **Saskia van der Meij**

Expedition Guide: **Sasha Romanovski**

Camping Guide: **Paolo Bellezze**

Camping Guide: **Gonzalo Sabbattini**

Kayaking Guide: **Alexis Bellezze**

Kayaking Guide: **Nick Cunliffe**

Dive Team Leader: **Henrik Enckell**

Diving Guide: **Mike Pumm**

Day 1 – Tuesday, 13th December 2022

Embarkation – Ushuaia, Argentina

Wind: W4, **Sea State:** Port, **Weather:** Partly clouded, **Air Temp:** +8°C, **Sea Temp:** +10°C

Ushuaia is the southernmost city of South America and known as “el fin del mundo,” the “end of the world” – today we know that there lies another world beyond that rough ocean to the south known as the Drake Passage. The destination of our voyage is a world unlike any other place we have seen before: Antarctica.

Today is the day and we finally embark M/V Hondius, the beautiful 107 metre vessel that would take us to explore Antarctica. We embark the ship at 4pm and are met by the staff and crew who warmly welcome us onboard. After checking in we are directed to our cabins where our luggage is already waiting for us. We then are shown to the lounge for tea, coffee and biscuits. The Chief Officer, Matai gives us a mandatory safety briefing followed by an abandon ship drill for which we are asked to use our wonderful bright orange lifejackets and get acquainted with the entire procedure.



At 6pm it is time for Captains cocktail to celebrate the beginning of the voyage with a glass of prosecco and delicious canapes. Captain Toni makes a welcome speech and we all toast to a good trip ahead. The Expedition Staff introduce themselves; it is interesting to meet all of them and learn where in the world they come from and what their specialities are. As the ship is sailing away from Ushuaia through the Beagle Channel and into the night is it time for a fantastic buffet from the chefs. Already now, this ship feels like home. As we look through the windows at the rolling mountains and lush green forests.

The next two days will be spent sailing through the Drake Passage - we are all hoping for a ‘Drake Lake’ and no ‘Drake shake’.

Day 2 – Wednesday, 14th December 2022

At sea in the Drake Passage

12:00 GPS Position: 057°22,3’S / 065°34,5’W

Wind: NW4, **Sea State:** moderate **Weather:** Party cloudy, **Air Temp:** +6°C, **Sea Temp:** +7,2°C

The predicted waves of five to six meters woke some of us up in the morning around 4am swinging the ship from Port to Starboard.



Not everyone makes it to breakfast but later most of us feel better again. Around noon the waves die down to a moderate swell. We can’t call it a ‘Drake Lake’, but the officer says: “these are really good conditions”. At 10.30am, Pipa gives a very interesting lecture about whales - which type of whales we might possibly meet during our voyage and how to recognize them by their different blows and dorsal fins. We are getting excited.

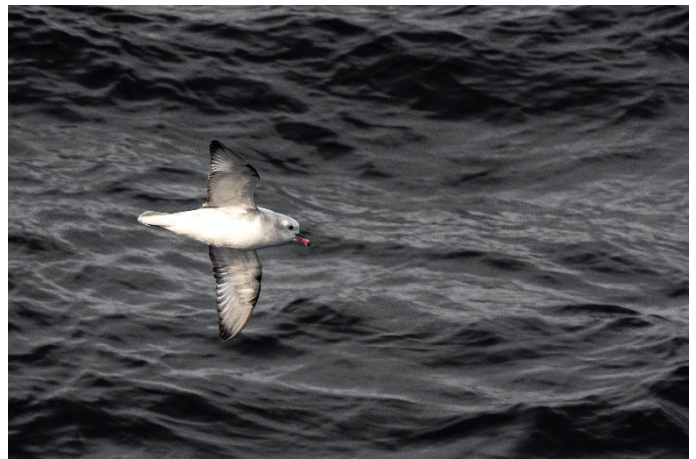
Shortly after this, we are called by deck to come down to the expedition store to do boot fitting.

Just after lunch Rose shares with us holds a lecture about the Gerlache Expedition to Antarctica which started in 1897 from Belgium – the Gerlache Strait is now named after him. Later in the afternoon at 4pm Charlotte shares her knowledge of all the pinnipeds/seals that we might encounter and even makes us listen to the funny sounds the Crabeater and Leopard Seals make.

Different briefings are also held to prepare for all the activities: diving, kayaking, and camping.

While sailing we can observe Wandering Albatrosses and Southern Giant Petrel around the ship and hovering just above the waves, we see some Grey Backed Storm Petrels.

Around 9.30pm we cross into the Antarctic convergence, which means we leave the warm waters of the Atlantic Ocean we enter the cold waters of the Southern Ocean. This change produces an upwelling of life and nutrients, and we are hopeful this will be the start of some good wildlife sightings for the upcoming days.



Day 3 – Thursday, 15th December 2022

At sea in the Drake Passage

12:00 GPS Position: 061°52,8'S / 063°41,7'W

Wind: N2, **Sea State:** slight **Weather:** moderate, **Air Temp:** +3°C, **Sea Temp:** +3°C

After another, and fortunately less rough and wavy night, we wake up to our Expedition leader's wake-up call – this will be our 2nd day in the Drake Passage. Some of us go up to the bridge or the outer decks to get some fresh air and observe the seabirds like wandering albatrosses and giant southern Petrels which are surrounding the ship.

The morning is then spent a delicious breakfast and a lecture about held by our Expedition Guides Carina about Penguins. She tells us very interesting facts about all species of penguins that one can find in the southern hemisphere. This will help us a lot to be able to identify the penguins we are supposed to see in the areas we are about to visit: Penguins, Chinstrap Penguins and Adele Penguins.

Shortly before lunch an announcement stirs a lot of interest: the first marine wildlife sighting. Humpback whales are swimming and breaching around the ship. Everybody is either outside or in the observation lounge, prepared with cameras and binoculars to observe and enjoy these beautiful animals.

Timings seem to be perfect - as the show seems to come to an end, it is time for lunch which means another delicious meal provided by the kitchen crew.

Now it is time for the last pat of preparation for our up-coming landings: biosecurity! Everything that will be worn like waterproof jackets and pants, gloves, hats and any kind of gear that we are planning on bringing to shore like backpacks need to be cleaned. We bring everything down to the shell doors on deck 3 where the Expedition Staff is already waiting for us with vacuum cleaners ready to assist us cleaning our gear. And so, we are all cleaning, vacuuming and helping each other to make sure that everything is perfectly clean and no seeds or vegetation or other bacteria from any other place in the world will be brought by us to Antarctica.

In the afternoon we are surprised by another treat. We are called to the lounge to join Expedition Guide Szymon on his lecture about Ice – and the Expedition Team is serving ice-cream. We will all remember a lot of interesting facts about ice!



Shortly before dinner time we reach the most southern Island of the South Shetland Islands called Smith Island. A first little preview of snow and ice-covered mountains.

In the daily Recap after dinner our expedition leader Pippa tells us about the plans for the next day and we get some insights and great information about the Drake Passage, the heat loss in the human body and Geopolitics in Antarctica.

The 2nd day on our way to Antarctica comes to an end and we all go to our cabins excited and happy to experience our very first steps on the continent in the upcoming day.

Day 4 – Friday, 16th December 2022

Orne Harbour, Paradise Bay & Brown Station

12:00 GPS Position: 64°42.4' S / 062°34.1' W

Wind: E2, **Sea State:** calm, **Weather:** overcast, **Air Temp:** +5°C, **Sea Temp :** +3,5°C

We are finally here; we are in Antarctica!



After two sailing days across the Drake Passage, Antarctica welcomes us in proper polar conditions in Orne Harbour – winds with strong gusts, snow showers and quite some swell.

Orne Harbour is a cove, approximately 2km long, on the west coast of Graham Land. The most prominent features being a black, steep, pinnacle “Negro Nunatak” and a glacier.

After breakfast, a zodiac cruise is planned and will give us an introduction to Expedition Cruising. We immediately understood a sense of adventure and willingness to push our comfort zone would be required for expedition cruising.

Getting in the zodiacs for the first time is challenging but we have been well briefed, and our guides are helpful and remind us all dos and don'ts. As we gently move on the windward side of the coast, we are bobbing on the surface of the seas on a high swell towards a chinstrap colony. We go past ice growlers (small icebergs) and we observe our first penguins at a safe distance from the breaking waves. Our drivers do a good job in keeping us dry from splash but, wet snow showers and the wind blowing some of our bow splash onto us, make it a rather wet ride. Once back in the shelter of the cove, we enjoy observing the front of a glacier, the brash ice and icebergs around us. We take time to switch engines off and take in the soundscape. As a final treat, some of us are blessed with the first humpback whale sightings from the zodiacs, bliss! We shall never forget the sound of a whale blow!

During lunch, we sail towards our next destination: Paradise Bay. And if paradise is made of ice and snow, then this amazing place we can see soon must be it.

Almirante Brown Station is in the Danco Coast, a beautiful bay formed by the Argentine Channels to the north and south of Bryde Island which shapes the skyline to the west. South of 'Brown station' is Skontorpe Cove, a sheltered area surrounded by huge glaciers and high mountains.

Today the plan is to split our group, half of us will go zodiac cruising and half will visit the station grounds and its surroundings, after a while, we will swap, and everyone has the chance to spend some time on land and on the water.



While zodiac cruising, we are treated to Weddell Seals on ice, a curious Minke whale that keeps on 'spy hopping' Tiphany's zodiac as well as some humpback whales seen every here and there. More seals are seen in Skontorpe Cove and one of the greatest treats is witnessing from a safe distance two large calvings - one in Skontorpe Cove and the second, across the bay from the station. The

blue-eyed shags are also very entertaining, flying to and from the colony with nesting material. Early summer is a busy time for Antarctic wildlife. On land we enjoy some magnificent views as well as our first Gentoo Penguin rookeries. These little cute fellas seem to have made themselves very comfortable around the base buildings and give us the first dose of penguin love for the trip. We will never get enough of penguins! At the station, we are able to walk up to the top of a hill overlooking Paradise Harbour and from there to a snowy shoulder overlooking a glacier and a few hauled out Weddell Seals on the last sea ice. The surprise this day comes when two of our guests get married and the spot... Long live the newlyweds!

As the weather is good in Paradise Bay and seems to hold, it is decided to stay here for the night. And this gives 40 brave campers the possibility to spend the night outside. They head out after dinner to dig their pits in the snow and make themselves comfortable under the Antarctic sky for the night - if we can call it that way. The campers work efficiently setting up their sleeping pits and everybody comes together to enjoy the beautiful calmness of Paradise Harbour at night. Some Weddell seals haul out at about 50m from the campers and by midnight, everyone is tucked in for the night. The guides keep an eye on the weather and ice condition. At 3h45, Paolo comes to wake us up and after covering up our snow pits and packing our gear we are picked up by zodiac and taken back to the ship for a 4h30 coffee with pastries. Life is good!



Day 5 – Saturday, 17th December 2022

Foyn Harbour & Danco Island

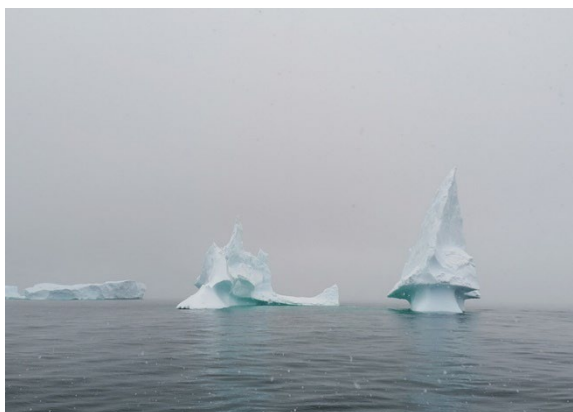
12:00 GPS Position: 064°33,8'S / 061°59,4'W

Wind: S3, Sea State: calm Weather: snowy, Air Temp: +1°C, Sea Temp: +3,5°C



We start our day early with the usual wakeup call from Expedition Leader Pippa. We quickly get dressed and head to the dining room to enjoy a hearty breakfast.

We then prepare to go outside for the morning to our first activity of the day which was a zodiac cruise of Foyen Harbour. It is a little windy and rainy, but we persevere and board our zodiacs. Once out, the weather starts to change for the better as we drive closer to Enterprise Island.



We visit a large, wrecked whale processing ship called “Guvernøren”. She had caught fire and been scuppered in the bay in 1915 leaving a large hulk sitting partly above the water for us to see. We observed the ship in her final resting place for a few minutes before moving on. We weave in amongst the ice and rocks along the coast of the island. Some of us spot part of a water boat which had also been scuppered nearby but is mostly covered in snow. We round the corner and head out to sea to see the giant towering icebergs floating around. They are huge and came in amazing shapes, textures and sizes. We can't help but find wonder

in every iceberg. Whilst we are enjoying the ice, a call comes over the radio: someone has spotted a few Humpback whales!

We head further out to sea to their location and make a slow approach. Our care is rewarded as we spot three of them swimming back and forth blowing bubbles and diving repeatedly. We are lucky to have one show its fluke to us so we could see the details of the underside of the tail which are different for each individual whale and makes it possible for us to identify them. After a while we say goodbye to the whales and leave to head back to the ship. We are a little glad as it was very cold. We arrive back at Hondius just in time for lunch where we regale our fellow passengers with our adventures of the morning while the ship repositions.



Our stop for the afternoon is Danco Island where we got the opportunity to go on shore and do a zodiac cruise. The first group goes ashore while the second group is out to cruise. Onshore we put on our snowshoes and walk slowly up the hill to the first colony of Gentoo Penguins. Then the slope gets steeper and soon we zigzag up the hill to the snow-covered top with more nesting Gentoos. We can observe them building their nests and a few have eggs! It is a difficult year for them as there is still so much snow. From wherever you stop and stand on this walk, the views over the bay, the water and the incredible number of icebergs is fantastic. We go back down to the landing site and swap with our friends in the zodiacs to enjoy a cruise. We cruise around big icebergs and observe the huge glacial front. We see some Weddell seals climbing out of the water looking for a cosy patch on the snow to rest.



At this point, a big number of us returns to the ship of us but some others stay on the landing site or return there after their cruise as they have a special event to take part in - it is time for a Polar Plunge!

As soon as we were ready we run out into the ocean and dunk our heads into the water. Some of us squeal upon entering the frigid sea but everyone is coming out with a smile on their face and a new story to tell. Around 60 fearless guests are heading into the water of +2°C. BRAVO to all of them!

Once completed we all rush back to the zodiacs to get back to the ship and prepare for the final act of the day. It is BBQ night. The hotel staff has put together a wonderful BBQ for us to enjoy out on the open decks surrounded by the sights and sounds of Antarctica. It was a truly wonderful way to end a day.



Day 6 – Sunday 18th December 2022

Petermann Island & Damoy Point

12:00 GPS Position: 065°10,9'S / 064°08,0'W

Wind: NE-5, **Sea State:** calm **Weather:** Wind, **Air Temp:** +5°C, **Sea Temp:** +3°C

In the early morning at around 6h we are passing the Lemaire Channel and are enjoying this beautiful scenery. What a nice start of the day.

The wake-up call “only” comes at 7h – still early for many of us but the weather is said to be turning sour during the day and we hope to get the most out of it somehow. At 8h the first group is ready to discover Petermann Island.

We put on our snowshoes – it becomes “daily business” and we are getting quite comfortable with them. Different paths have been opened and we can walk in different directions. One brings us first to a Gentoo Penguin colony and then, further up the hill to our first colony of Adelie Penguins – a beautiful little penguin. He has a black head and his eyes are surrounded by a white line. Here we overlook also some beautiful mountain ranges. Another path leads up to another hill from which the view is so different but as amazing – we do see numerous icebergs of different sizes and shapes: it is a cemetery of icebergs; they have all stranded here. In the same time, and we can see them, the other half of our group is enjoying a zodiac cruise – they are driving on a safe distance around huge icebergs, some humpback whales pop up every now and then, penguins are swimming alone or in groups, jumping and diving and standing here and there on icebergs. What a wonderful morning this is.



During lunch time and the beginning of the afternoon, the ship is sailing towards Damoy Point.

In the afternoon we arrive at Damoy Point but sadly the conditions are aren't as we hoped. The wind increased and we have to cancel the Zodiac cruise. But we are able to go ashore. The landing site lies in the far end of a small sheltered bay, there is still a lot of snow but stairs have been dug into it and we can easily make our way up the little slope.



We get our snowshoes in our hands and after a short walk arrive to a cabin painted all in turquoise which looks lovely in the white surroundings – this is Damoy Hut. It was built in 1973 and used for several years as a British summer air facility and transit station for scientific personnel. It was last occupied in 1993 and has then been designated a Historic Site or Monument (HSM 84). The hut is well-preserved and contains scientific equipment and other artefacts from the times of its use beautifully displayed – another very interesting and informative visit.



And then nature and a walk await us. We can choose the length of our walk as different ways have been flagged through the snowy landscape. We can walk by several Gentoo Penguin colonies and enjoy beautiful views. Quite a few of us even make it up to the top of the little mountain.

A short recap with the plans for the next day and insights on Japanese whaling lead us toward our dinner. Another fabulous day comes to an end.

Day 7 – Monday, 19th December 2022

Port Lockroy (Goudier Island) & Cuverville Island

12:00 GPS Position: 64°49.8' S / 063°30.7' W

Wind: E2 Sea State: Calm Weather: overcast Air Temp: +3°C Sea Temp: +3,6°C



The morning greets us with low skies and fog looming over Goudier Island. The first half of the day promises to be very busy, because the activity we are supposed to have differs a lot from the ones of the previous days. The morning of the 19th of December we had a plan to do... shopping! The tiny island of Goudier hosts a British station called "Base A" also widely known as Port Lockroy. Previously it was one of scientific outposts of the UK,



but now it is a museum and also a souvenir shop. Besides it is considered to be the southernmost post office in the World. We are very excited about this unique opportunity to send a postcard from Antarctica.

But before we are allowed to go onshore, we are given a mini-lecture in the Lounge held by one of the employees who lives and works in Port Lockroy. She arrived aboard Hondius with a Zodiac while we were having breakfast. As the island and the station are very small, not all of us can visit at once and we are split in three groups.

The rules of visiting the station itself are very strict: boots need to be rinsed and brushed, not more than 30 people inside at any time and we all need to wear masks inside the building. This outpost is very far away from any medical

help and facility and no one wishes the employees to get sick.

The exterior of the station is definitely not less impressive than the museum: hundreds of penguins nesting everywhere, Snowy sheathbills, skuas and cormorants flying around, old equipment, century old dog sledges and anchorage chains are to see – together with the museum, this creates a very special atmosphere. Eventually all of us have their postcards sent and souvenirs purchased and we returned to Hondius.

We leave Goudier Island and head to the place of our afternoon activity - Cuverville Island - which is a few hours of navigation away.

As soon as we arrive, the expedition team sets out on zodiacs to scouting the landing site. Sadly, it is absolutely impossible to approach the shore because of the enormous amount of brash ice and bergy bits that clog the way. Well, where there is plan A, there is always plan B! The decision is made to use this opportunity to navigate and study this labyrinth of icebergs with Zodiacs and see what else we could discover. Soon all of the Zodiacs are on the water waiting for us to embark.



And that is a really outstanding experience – to have a ride among these huge pieces of glacial ice drifting in the water. From time to time we can see rafts of penguins swimming next to us and Weddel seals sleeping on the ice. There is even a boat with no passengers, but William, our hotel manager, and with his helpers serving us hot chocolate.



We circumnavigated Cuverville island, spotted lots of wildlife and at the end even had a chance to watch a couple of Humpback whales swimming in the channel and waving us with their flukes.

Shortly after our return to the ship, Pippa delivers the plans for the next day: Keep on exploring!!!

Day 8 – Tuesday, 20th December 2022

Deception Island: Telefon & Whalers Bay

12:00 GPS Position: 62°59,0'S / 060°33,4'W

Wind: W4, **Sea State:** smooth, **Weather:** overcast, **Air Temp:** +2°C **Sea Temp:** +4°C

We have, after many wonderful expedition days, left the Antarctic Peninsula. One would expect spirits to be low, the longing for the Frozen Continent settling in to stay. Only one more day, only one more hour. However, thankfully, we have one more full day of expeditions on Deception Island in the South Shetland Islands. After a delightful breakfast, we disembark in windy conditions to go ashore on Telefon Bay. Here, a volcanic landscape stretches as far as the eye can see. Chinstrap Penguins are frolicking along the black sand beaches, while both dead and alive Weddell seals lie motionless. The viewpoint, a small hike away, offers lovely views across the destruction caused by the collapse of the volcano, forming the Caldera that we can nowadays sail into through a tricky opening called the Neptune's Bellows. For the passengers staying onboard, they had the option to enjoy Saskia's lecture on the Nordenskjöld Expedition. After enjoying the windy morning on the shore and the barren views, we resettle on the ship and head to lunch.



After gorging ourselves on the vast quantities prepared by our galley team, we continue onto the main event of the day, Whaler's bay. This settlement used to be in operation to dismantle and store the incredible amounts of whales caught everywhere close to these shores. Big tankers, now copper brown due to oxidation, still stand hugely, forming part of the landscape alongside abandoned housing, in disarray, and other machinery and debris. Some of the buildings collapsed back when the volcano erupted in 1969, but few still stand. A short hike in between the structures offers a desolate view of the place. To the other side, passing by a resting elephant seal, you could walk all the way to Neptune's window, an opening in the surrounding stonewall of the island, showing a scenic panorama beyond Deception Island. On the way we pass Gentoo and Chinstrap Penguins, many of Cape Petrels and a lone Leopard seal, lying at the far

end of the beach, a very scarred individual, who nevertheless is sighted there regularly. This was our first sight of this species on this trip, and he yawned and gaped at us, before leaving to other shores.



After indulging in the beauty and desolation of Whaler's Bay, we exited through Neptune's Bellows, and head straight due north, through the Drake's Passage, back to Ushuaia, back to land, back home.

As always, I finish with a limerick:

The waves of the Drake,
Took many in its wake,
But the Hondius still sails,
And our humour prevails,
And our way back home we make.

Day 9 – Wednesday, 21st December 2022

At sea in the Drake Passage towards Ushuaia

12:00 GPS Position: 60°16,3'S / 063°30,2'W

Wind: N6, **Sea State:** moderate, **Weather:** overcast, **Air Temp:** +3°C, **Sea Temp:** +4°C

Today, after a few extremely exciting days in the Antarctic Peninsula and our two last landings yesterday inside the spectacular active volcano of Deception Island, South Shetland Islands, we have the chance to rest a little bit longer in our rooms this morning – there is no wake-up call and breakfast starts only at 8h. The weather and seas conditions have been announced to be pretty rough but the night has not been as bad as we thought.

Yesterday evening, Михаил has put out a call for a photography competition and now, during the morning, the expedition team I taking the entries for the three categories – landscape, wildlife and comedy. There is a lot of enthusiasm to participate and provide our pictures which we took with passion during this voyage. All the entries are displayed on all the screens and voted can flow in until 16h.

Later this morning Chloe gives a very interesting talk about drifting life of the ocean – plankton. She makes us understand that it's not always and only about the whales and seals. These tiny and even sometimes cute animals are important for our entire ecosystem and vital element for bigger animals in the oceans. After delicious lunch and bellies full of burgers, George invites us to his lecture about Geopolitics in Antarctica. With his passion of this topic, he explains to us how sophisticated and well-regulated Antarctica is and many countries which are involved in this subject are taking care of this part of the world; but there are also problems and conflicts of geopolitics. And then later this afternoon, Tiphanie takes us in the interesting world of fish of the Southern Ocean and makes us the amount of weird sea creatures that are leaving there. Very funny.

Daily recap with plans for tomorrow and lots of small and interesting topics from our expedition team happen as usual before dinner. And to round up the day, we all meet in the lounge after dinner again to meet and celebrate the winners of the photo contest.

Day 10 – Thursday, 22nd December 2022

At sea in the Drake Passage towards Ushuaia

12:00 GPS Position: 55°47.5'S / 065°59.1'W

Wind: NE3-4, **Sea State:** slight, **Weather:** overcast, **Air Temp:** +7°C, **Sea Temp:** +8°C

We wake up to our second day in the Drake Passage – the swell has calmed down quite a bit, there mostly clouds and fog outside. But it is good to keep inside, reflect on this amazing trip, have time to for chats and coffees as yesterday has been a little difficult on some of us. And for sure, the expedition team has some more in store for us: a mini lecture series is waiting for us in the end of the morning. Saskia shares the story of Tom Crean, the forgotten Antarctic hero. Pippa makes us listen to the songs of Humpback whales and Sasha invites us in his former life in the Russian ghost town of Pyramiden on Svalbard, an archipelago between northern Norway and the North pole.

Lunch is, as always, delicious and gives our days a rhythm.

And the expedition team is still not done with their knowledge. Mikhail is holding a lecture on Marine Mammal Acoustics – and we can listen so different sounds of whales and seals.

Shortly after 3.30 pm we can see land for the first time after leaving the South Shetland Islands two days again. Terre del Fuego greets us with sunshine and brown-green hills. Welcome back. We will soon sail into the Beagle Channel.



Another mini lecture series is offered to us in the afternoon. It is lovely to see images and hear about the adventure of the kayakers that Alexis and Nick are sharing with us. Rose brings us close to a less funny but highly important subject: the ocean pollution and the effect it has on the wildlife. Paolo then takes us back to Antarctica and shares his knowledge about the climate there.

And then time has come for our last “recap” and one last time Pippa comes with the plans for the next day, this time it is all about disembarkation – important but sad as the end of the trip is again coming one step closer. More festive is then the Farewell Toast by Captain Toni and the very beautiful and heart-warming slide show prepared by Mikhail. We then all meet on the bow for a group photo. We do have bright sunshine by now and it is quite warm. Also, it smells like wood and soil, smells we almost had forgotten about. And just because this is the Beagle Channel, a few dolphins greet us and enjoy riding in our waves. Lovely!

During a last dinner, we finally get the chance to meet the entire crew of the hotel department. Our time has come to thank them with a huge applause for their amazing work. What a day this has been – again !

At a bit past 10pm, it is even a bit dark, and the city lights are on, we arrive at Ushuaia and go alongside the pier. We enjoy our last day on board and find our way to our cabins quite late – but happy.

Day 11 – Friday, 23rd December 2022

Disembarkation in Ushuaia

One last wake-up all from Pippa. Our bags are packed when we head down for breakfast one last time and we are getting ready to disembark our dear Hondius that has taken us to one of the most beautiful places on earth. The last 11 days have taken us on a remarkable journey over the notorious Drake Passage to the Antarctic Peninsula. It has given us a glimpse of life in these remote and sometimes inhospitable places. We have encountered amazing wildlife, made new friends, learnt and experienced so much together. We will all take away different memories of our cruise, but those memories will stay with us for the rest of our lives. This was our expedition.

Total distance sailed on our voyage: 1'663 Nautical Miles (3'079,886 km)

Furthest point south: 65°10.9'S 064°08,1W



Your Expedition Team!

On behalf of everyone on board we thank you for travelling with us and wish you a safe journey home.

Divelog HDS23 13.Dec. - 23.Dec. 2022

Dive Team Leader: Henrik Enckell

Diveguide: Mike Pumm

Divers: Joia, Dapo, Paul



Dive #1—Paradise Bay, Shaq Wall

December 16, 2022,

Max depth: 13m / 42ft

Max dive time: 31min

Water temperature: 0 Celsius

Visibility: 10-12m / 35ft

This was our “check-out dive”. The check-out dive is used to test all the equipment and check the correct amount of weights. This was a beautiful wall dive. Visibility was approximately 42 ft/13m. There was kelp anchored to the rocks with large leaves. There were some other type of plant that was neon orange in colour. An abundance and variety of sea stars. Large white worms. Many salps were seen during the dive with multiple segments so that they were at least a couple of feet long. Also seen during the dive were amphipods and a couple of very small fish.



Dive #2—Foyen Harbour, The Guvernøren Wreck

December 17, 2022,

Max depth: 15m / 49ft

Max dive time: 31min

Water temperature: -1 Celsius

Visibility: 10-12m / 35 ft

This wreck lies partially submerged, with the bow proudly projecting above the surface. We started our dive at the

bow, and worked our way aft on the starboard side. When we reached amidships, we crossed over the rail and explored the vessel interior. The deck was devastated, with little structure untouched by the fire that sank the vessel. It must have been terrifying to the sailors aboard.

We swam the port side back to the bow, and then swam away from the wreckage. Even off the wreck we found numerous artefacts... bottles, drinking glasses, a fender, and many things I could not recognize.



Dive #3—Danco Island, Ice Bearg Dive

December 17, 2022,

Max depth: 9 m / 29ft

Max dive time 25min

Water temperature -1 Celsius

Visibility: 9m / 29ft

Our dive guide staff selected an appropriate chunk of ice, and off we went. The water was quite green probably phytoplankton. Besides the plankton, visibility might have been reduced by underwater melting of the iceberg, causing fresh water to mix with sea water. It was interesting to see the erosional melt patterns on the subsurface ice, and to slide beneath the rounded edges of the iceberg so that there was a ceiling above us. We see also a lot of sea butterfly.



Dive #4—Peterman Island

December 18, 2022,

Max depth: 16m / 52ft

Max dive time 25min

Water temperature -1 Celsius

Visibility: 10m / 33ft

Dive number four was our southernmost dive on this tour. We dived off Peterman Island, the bottom was covered with big rock where a lot of life could be seen.

We saw several starfish, nudibranchs and in the water, there was a lot of krill.



Dive #5—Damoy Point
December 18, 2022,
Max depth: 18m / 60ft
Max dive time 31min
Water temperature, 0 Celsius
Visibility: 10m / 33ft

Damoy Point was a beautiful dive site, the bottom was covered with Kelp, underneath you could observe a lot of life. It showed once again how much the Antarctic water is alive, although it is hard to imagine with the cold water. But it shows once again that life is created in the water.



Dive #6—Port Lockroy
December 19, 2022,
Max depth: 20m / 65ft
Max dive time 31min
Water temperature 0 Celsius
Visibility: 10meter / 33ft

For many divers Port Lockroy is certainly one of the highlights to dive. On the one hand it is the southernmost post office in the world, on the other hand whale bones from the whaling era about 100 years ago can be admired while diving. The bones lie at a depth of 15-20meters, well within the depth limit allowed for polar diving. We were all surprised by the size of the

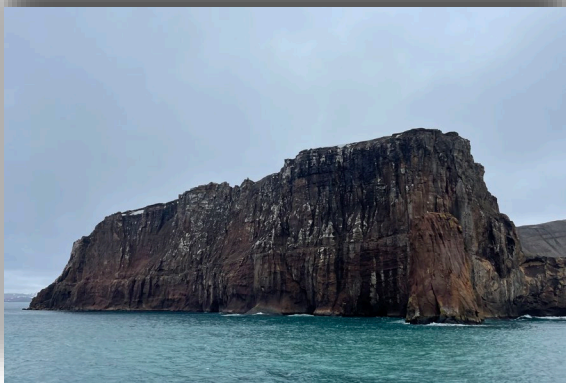
individual bones are, according to the size, it was a humpback whale or a blue whale. We also saw two sea pods.



Dive #7—Cuverville Island
December 19, 2022,
Max depth: 20m / 65ft
Max dive time 32min
Water temperature 0 Celsius
Visibility: 10m / 33ft

Cuverville Island is an optimal dive site to do a check dive where the penguins are or on the side of the island there is a beautiful wall that goes deeper than 100 meters. We decided to do a dive on the wall. The wall had a similarity with the wall of Paradise Bay. The wall was covered with beautiful Kelp, and a lot of marine life. We saw krill,

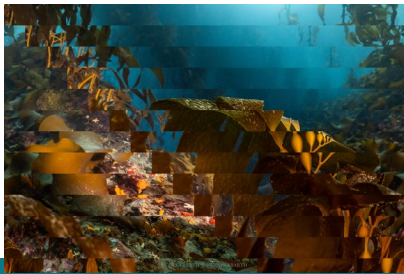
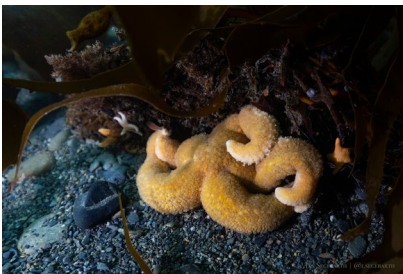
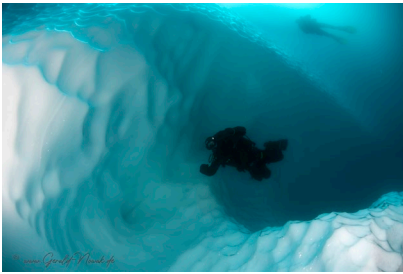
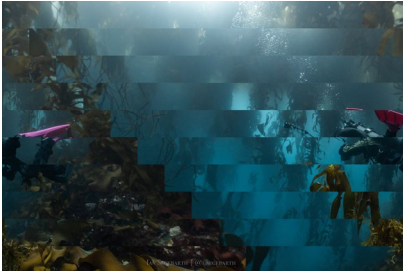
amphipods, snails, nudibranchs and many starfish.



Dive #8—Whalers Bay, Deception Island
December 20, 2022
Max depth: 20m/ 60ft
Max dive time 32min
Water temperature 1 Celsius
Visibility: 5m / 15ft

The last dive on our trip, we had the opportunity to dive an active Volcano in Antarctica. We dived in front of Whalers Bay in Deception Island. The visibility was very bad the first 5 meters, below 5 meters we had a visibility of about 5-6meter. It was very exciting to see how many

anemones, soft corals, sponges and millions of brittle stars live in the depths of Deceptions Island. We enjoyed our last dive and finished the dive after about 32 minutes with a smile in our faces and remember very fondly the incredible trip we had on Hondius and the whole team of Oceanwide Expeditions, for some it is already clear: it was not the last time they were diving in Antarctica...



HDS24-22 Kayak Trip Report

16 December AM Orne Harbour

Our first kayak session was cancelled with the arrival of a moderate onshore wind - a lack of protected water required postponement for safety reasons. We switched to a Zodiac cruise and enjoyed the dramatic glacial scenery of Orne Harbour - highlights included the observation of two feeding Humpback Whales, that remained in the vicinity of the Zodiacs for 15 minutes.

After an exploration of the neighbouring Gentoo Penguin rookeries at the south side of Orne Harbour, we cruised beneath the impressive rocky cliffs of Spigot Peak before returning to the ship.

16 December PM Brown Station / Paradise Bay

Light winds and calm waters greeted our arrival at the Brown Station Argentinian research base. We launched our kayaks close to the ship and began a wonderful exploration in this remarkable corner of the Antarctic Peninsula.



Our first destination, beneath the low cliffs next to the landing point, provided an excellent viewpoint of numerous Blue-eyed Shags nesting on rocky ledges. We continued towards the glacial amphitheatre beyond the next headland as Antarctic Terns, Kelp Gulls and Skuas soared and fluttered past our kayaks.

Pausing at the barrier of brash ice, we gazed in awe at the dramatic glacial ice flowing down from the mountains above. Sitting silently at a safe distance, we listened to the creaks and cracks of the towering ice cliffs, among drifting bergy bits.

We continued parallel to the glacier's terminal face, among floating bergs and through clinking brash ice. We discovered a solitary Weddell Seal resting on a floe, and quietly observed this magnificent animal of the southern high latitudes.

An absorbing route home, slaloming through a maze of floating ice, returned us to the Hondius where we marvelled at our fantastic adventures afloat.

17 December AM

Foyn Harbour

In cold conditions, with light winds and snow flurries, we launched from our Zodiacs and completed a short open water crossing to the ice cliff-lined shoreline south of Foyn Harbour. At a safe distance from a grounded iceberg, we grouped in sheltered water and admired the atmospheric presence of our glacial surroundings.



We kayaked towards a narrow channel between the islands, pausing to observe a small group of Crabeater Seals, hauled out on a low snowy promontory. Kelp Gulls and Skuas dotted the shoreline, watching our progress as we paddled between glacially smoothed granite slabs.

Our journey through the channel took us through an 'Iceberg Alley' of grounded bergs, with safe passages between. A gentle wind assisted our progress, as snow flurries and rain drops provided a reminder of the Antarctic environment. Arriving in the lee of a headland, we transferred to the

Zodiacs and headed back to the Hondius, via a detour to view the Gøvernens shipwreck. An unexpected encounter with a Humpback Whale completed an adventurous mooning of kayaking adventures.

17 December PM

Danko Island

This excellent kayaking adventure took in the coastline alongside the east shore of Rougé Island. Departing the Hondius, we traveled by Zodiac towards Cuverville Island, near which we switched to our kayaks among drifting bergy bits and beneath high mountain peaks.

We paddled alongside a line of rocky moraine, safely distant from the glacial terminal faces lining the shore to our right. Pausing to observe our surroundings, we watched as a series of ice blocks fell from the glacier, the booming sounds of impact echoing the surrounding cliffs. Sat comfortably in deep water, we gently rose and fell as a series of small waves passed under our kayaks.



Continuing towards the ice-choked channel beyond Rougé Island, we quietly observed a solitary Weddell Seal as it slept on a low snow-covered outcrop. A final journey through wide channels between larger ice bergs brought us to the vicinity of the Hondius and the end of afternoon explorations in the magnificent surroundings of Danko Island.

18 December AM

Petermann Island

Conditions were ideal for kayaking on this glorious Antarctic morning. A very light wind ruffled the surface of the ocean, with a gentle swell passing harmlessly beneath the kayaks. We traveled by

Zodiac to the mainland shore, launching into our kayaks among brash ice a safe distance from the impressive tidewater glacier ahead of us.

Turning away from our view of the Southern Ocean beyond Petermann Island, we paddled parallel to the shore alongside a dramatic landscape of steep glaciated peaks, rocky ridges and tumbling crevassed glaciers. We briefly encountered a passing Minke Whale, along with swimming Gentoo Penguins among the ice.

The mountain scenery became ever more dramatic as we kayaked beneath the west face of 800m-high Scott's Peak, its hanging glaciers dominating the view above us. We spent some time silently appreciating the power and grandeur of this amazing the Antarctic environment.

Finally returning to the Zodiacs, we briefly observed a resting Humpback Whale, before returning to the ship at the end of a fabulous morning of sea kayaking.

18 December PM **Damoy Point**

Our arrival at Damoy Point coincided with an increase in the NE wind to 20+ knots. We regretfully cancelled the planned kayaking session and anticipated improved conditions the following day.

19 December AM **Port Lockroy**



A windy morning at Port Lockroy offered limited kayaking opportunities - however, we were able to enjoy a stimulating excursion within the lagoon next to the British Base. In protected water sheltered from the wind, we explored intricate granite rock gardens and viewed impressive ice walls surrounding the lagoon.

A number of resting Weddell Seals provided an intimate wildlife viewing opportunity, along with swimming Gentoo Penguins, Kelp Gulls and Skuas. After a short journey around the perimeter of the lagoon, we returned to the Hondius to prepare for the afternoon kayaking session.

19 December PM Cuverville Island

After relocating to Cuverville Island via the Errata Channel, we were delighted to find calm conditions and only a small sea state beyond the island. A large team of enthusiastic kayakers gathered at the shell door, ready for an afternoon of kayak adventure and exploration.

We launched from the Zodiacs at the north end of Cuverville Island, spending a short time observing the Gentoo Penguins rookeries and Blue-eyed Shag nesting grounds. The melting snow created numerous sites for breeding Penguins, with many choosing higher ground away from the lingering snowpack.



Arriving at the SE corner of Cuverville, we admired the impressive green and red colourations of the exposed snowpack, a result of algal growth and an indication of the pristine nature of the Antarctic environment. Continuing the west side of the island, we encountered a resting Weddell Seal and, on the shoreline, two Skuas feeding on a Penguin carcass. A mid-channel island displayed the rusting anchor chains of an early-1900s boat mooring.

The west channel was almost completely blocked with grounded ice bergs and bergy bits, with a gentle flood tidal stream creating currents between the floes. We crossed cautiously on the downstream side of the bergs, seeking an escape route into the Errata Channel.

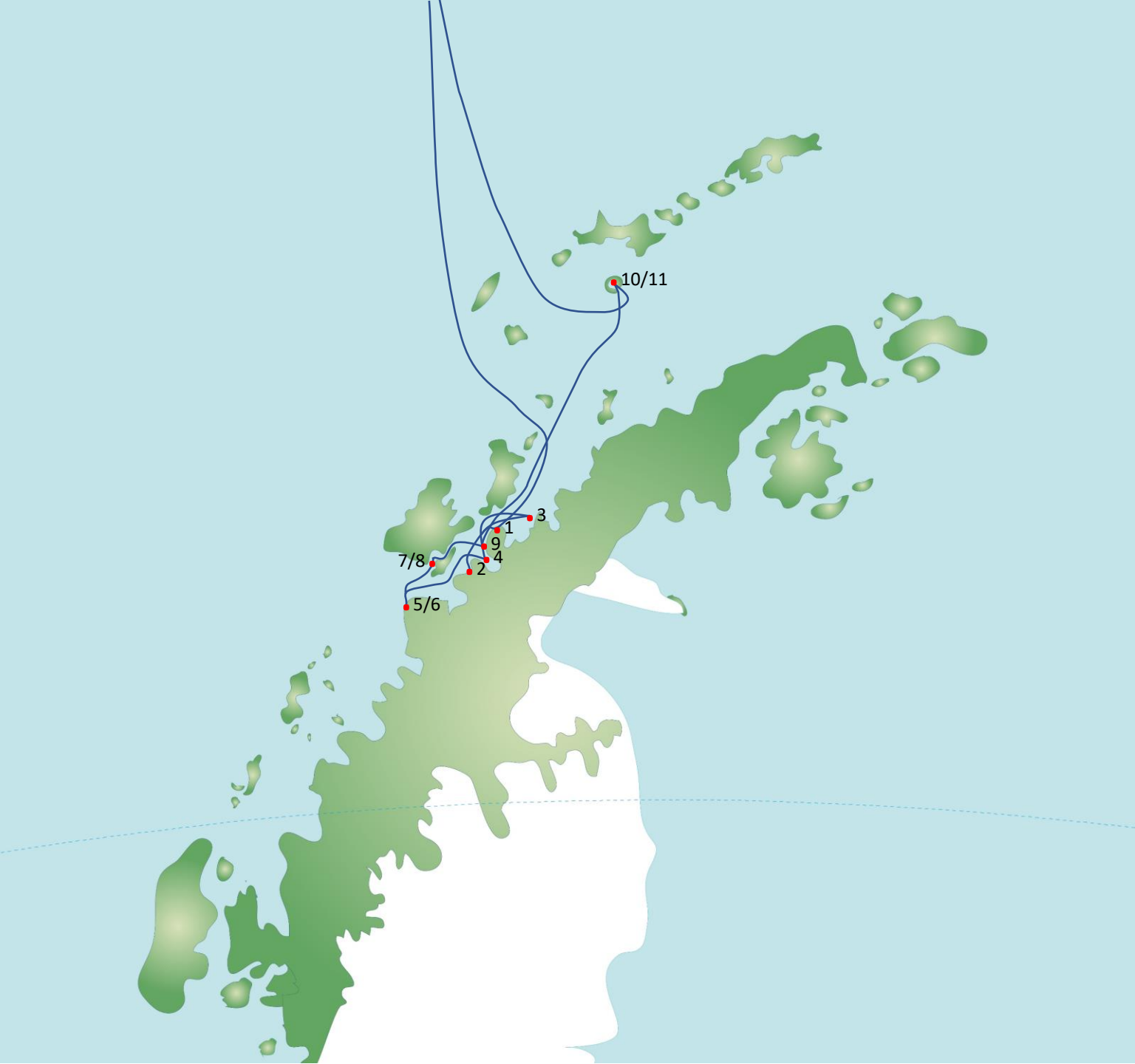
We found a channel deep and wide enough for kayaks and Zodiacs, between the east shoreline of Rougé Island and the nearest grounded bergs. A cluster of Gentoo Penguins watched us as we navigated the channel, emerging into a lagoon of open water surrounded by icebergs. Gathering together, we selected a wide channel that permitted safe access to the Errata Channel and the

north tip of Cuverville Island. A gentle sea state greeted us, the kayaks rising and falling on green unbroken swells.

We reentered the Zodiacs and returned to the ship for an overnight cruise to Deception Island.

20 December

A string NW wind at Telefon and Whalers' Bay made conditions unsuitable of kayaking in this final Antarctic venue. We congratulated ourselves on a series of wonderful kayaking adventures and reflected on a fantastic experience afloat in the frozen South continent.



1. Orne Harbour (Dec 16th)
2. Paradise bay / Brown Station (Dec 16th)
3. Foyen Harbour (Dec 17th)
4. Denco Island (Dec 17th)
5. Lemier channel (Dec 18th)
6. Petermann Island (Dec 18th)
7. Demoy Island (Dec 18th)
8. Port Lockroy (Dec 19th)
9. Cuverville Island (Dec 19th)
10. Telefon Bay (Dec 20th)
11. Whaler's Bay (Dec 20th)

Pippa Low – Expedition Leader



Pippa has worked as a marine guide and skipper for 10 years, primarily in Scotland, Australia, New Zealand and the polar regions. A marine scientist specialising in marine mammal research and conservation, she splits her time between the hemispheres, and loves showing the public the marine world and all it has to offer.

Growing up on the coast of the incredible Moray Firth sparked a love for the marine world and its inhabitants. Spending every spare minute in, on or under the water; professional life reflected this love from a young age,

becoming an instructor in various marine disciplines and going on to study Marine biology at university in Scotland, then later, Australia.

Upon completion of her degree, Pippa has worked as a marine mammal observer, scientific diver and research assistant on various research projects; including photo ID, migration, distribution and behavioural studies on a range of marine mammals. She has developed a keen interest in marine mammal conservation through outreach and research.

After working in the Ross Sea region of Antarctica as a research assistant, she fell in love with Antarctica. Pippa now works as a full-time guide and assistant expedition leader in both the Arctic and Antarctica. In-between seasons, she still finds time to work on research projects.

George Kennedy – Assistant Expedition Leader



George is a social scientist with a keen interest in polar geopolitics and Arctic cultural identities. He has completed a Masters of Anthropology at Monash University and a Graduate Diploma in Antarctic Governance and Policy at the University of Tasmania. Most recently, George has worked at the Australian Antarctic Division, collaborating across the Antarctic Treaty Consultative Parties to develop sustainable tourism policies in the region.

In his practice as an anthropologist, George has worked predominantly with community development organisations in Latin America. His work has focussed on identifying collaborative solutions to support environmental conservation and sustainable tourism in Patagonia and the Amazon basin.

Prior to his work in anthropology, George served as a paramedic in Australia, still occasionally throwing on the uniform to work with Ambulance Victoria in Melbourne.

Second only to expedition cruising, George's great passion is motorcycle travel. He has ridden from Mongolia to India, around Australia, and most recently from Patagonia to Mexico on his Kawasaki KLR650.

Chloé Maréchal – Assistant Expedition Leader



Chloé is a passionate diver fascinated by marine life and exploration. She earned a European master degree in Marine biodiversity and conservation and loves to share her expertise for the marine environment. In April 2013, she was selected as the 2013-14 European Rolex our world underwater scholar. She spent a year working side by side with current leaders in underwater fields, getting very different experiences in marine science and in the diving industry. Diving and science are not her only passion; she enjoys exploring new countries and discovering new cultures. She has been diving on all continents

and living in more than 20 countries.

Chloe now lives in northern Norway just above the polar circle. When she is not onboard, she can be found underwater: observing the ocean's inhabitants, searching for forgotten wrecks or mapping and exploring undiscovered underwater cave passages.

Szymon Niezabitowski - Expedition Guide



Szymon was born in 1993 in Cracow, Poland. He studied Biology and Geography in Cracow where he received graduate degree in "Faculty of Biology and Earth Sciences".

His graduate thesis was about Volcanic Soils on Iceland.

After he finished his studies he worked for the Institute of Systematics and Evolution of Animals, where he was a guide and keeper of exotic animals.

From the earliest years of his life he is a passionate naturalist with a special interest in the geography and the wildlife of the higher latitudes.

Deutsch

Szymon ist 1993 in Krakau, Polen geboren. Er hat Biologie und Geografie in Krakau studiert wo er ein Bachelor in "Faculty of Biology and Earth Sciences" bekommen hat.

Seine Abschlussarbeit war über Vulkanische Böden Islands.

Nachdem er seine Studien abgeschlossen hat hat er fürs Institute of Systematics and Evolution of Animals gearbeitet, wo er Guide und Tierpfleger für Exoten war.

Seit seinen jüngstem Alter ist er ein leidenschaftlicher Naturalist mit besonderem Interesse in Geografie und Wildtiere der höheren Breiten.

Charlotte Taplin – Expedition Guide



Charlotte grew up by the Coast in Cornwall, United Kingdom. From a young age she has always been fascinated by wildlife and the ocean. She studied Wildlife Conservation at University and then spent the next 10 years travelling through South America, Australasia and Africa. Charlotte's love for boats began in 2013 where she worked on research and dive vessels visiting remote regions of the Great Barrier Reef. Her interest in Marine Biology grew in Australia and New Zealand while studying Humpback, Minke and Sperm Whales.

After driving overland in a land rover from South Africa to Jordan she then moved to Mozambique in 2018 where she started her own backpacker hostel. In her spare time Charlotte worked as a Researcher studying Whale sharks and Manta Rays along the Coast of Mozambique. During 2020-2022 she worked as a Deckhand/Divemaster on superyachts and ice breaker explorer vessels. Her hobbies include scuba-diving, surfing, free-diving and hiking. Being surrounded by the ocean is Charlotte's favourite place to be and she is so excited to have started her first season with Oceanwide in 2022.

Julia Wellner – Expedition guide



Julia grew up in northern Germany, roaming and exploring nature from her early childhood on and quickly developed quite a taste for travelling. After studying photography in the tiny village of Vevey on the shores of the Lake of Geneva in Switzerland, she has worked and lived in the USA and France. Once back to the calm grounds of Switzerland, she spent almost ten years organizing medical emergency evacuations and repatriations worldwide – a passionate work with one big problem: a lack of nature and real adventure!

Several winter months spent in Iceland made her remember that the Far North, the cold and barren landscapes are the place where she feels the most at home. An artist residency that was taking place on a sailboat in the high arctic brought Julia to Svalbard, better known to some by the name of Spitzbergen. Two weeks that changed her life: touched by the incredible nature, she decided to leave Switzerland and move north and take on a new professional path.

Since 2017 she is now working as a guide and expedition leader: in winter & spring as a snowmobile guide on Svalbard, summers as a guide and expedition leader on expedition cruises in Svalbard and Greenland and when the darkness settles in the northernmost settlement of the world, she travels south and joins the expedition cruises for a great part of the Antarctic season. She speaks German, French, English and some Norwegian.

Julia still continues her work as a photographer with commercial mandates and as an artist with her work being show in exhibitions.

Rose Li Hong - Expedition Guide



Originally from China, Rose Li Graduated from Wuhan college with a major in Interior Design. She has worked on well-known international cruise ships since 2014 as an expedition guide and in Asia as a VIP services shift leader and Head cruise ambassador on a Mediterranean cruise line.

She has worked in the polar regions since 2017, as expedition guide, Zodiac driver, Chinese interpreter and guest services manager.

She has many talents such as dancing, drawing, skiing, hosting, and loves creating new activities. Her two academic passions are history and geology.

During her spare time, she has continued to develop her passion for traveling, and has visited more than 40 countries and looks forward to visiting many others in the near future.

Carina Ketterer – Expedition Guide



This is Carina, she grew up in the swiss capital of Bern far away from the sea. Her studies in renewable energies and environmental engineering gave her a curiosity in energy production and civil engineering. She would like to share this curiosity with you! Carina is a sports nut and runs triathlons in her spare time. But don't worry, she has vowed to slow down the tours to half-tempo.

Carinas favorite animal since childhood, was the penguin. In 2019 she finally hopped on a boat to the Antarctic to see them in their natural habitat. That journey bore in her a new fascination with these cute animals and their

dominion.

Being the happiest outside, Carina chose to make the world her workplace and to become an international guide for Oceanwide Expeditions.

Carina is a passionate and optimistic person who always likes to learn new things and has a broad interest in geography, history, archaeology, the arts and the natural sciences. As the cheesy Instagramposts say: "The journey of a thousand miles begins with a single step". So step up and let Carina share her passion for civil engineering and penguins with you and take part in your once in a lifetime adventure!

Tiphanie May - Expedition Guide



Tiphanie is an 8th generation Falkland Islander living in Stanley. She was raised on a small group of islands called Speedwell Island Group, owned and worked by her parents as a sheep farm and family crab business.

Tiph was raised surrounded by Falkland's wildlife with her family island boasting rookeries of Magellanic penguins, Gentoo penguins as well as several other breeding birds. The islands also include haul outs of South American sealions and elephant seals. Surrounded by all this wildlife it was of no surprise that she found nature

fascinating. From the penguin couple that lived under her house to the wonderful variety of creatures found in the crab pots, marine life was a theme. This led to her to travel to the UK at 16 to study to be a marine biologist.

Tiph spent 6 years in the UK studying to get her BSc (HONS) Marine Biology and MSc in Marine Biology. Using her holidays to volunteer in the Falklands for various conservation projects to gain experience. Upon completing her studies, she joined the Government Fisheries Department, spending 200 days per year at sea monitoring seabird activity and collecting research material. The sea has been a big part of her life, from a young age she worked to haul crab pots with her father's boat. Later she went on to work for an experimental sustainable fish farm which allowed her to get her RYA qualifications in Power Boat. Tiph currently works full time operating a small boat in the Falklands.

Tiphanie started working in the tourist industry at the age of 23. Having grown up with no roads her whole life, 4X4 tour driving just made sense. Tiph has worked to provide a variety of tours such as hiking, 4X4 and penguin colony visits. In 2018, Tiphanie was offered the amazing opportunity to go to Antarctica and South Georgia with Oceanwide as guide. She fell in love with the scale of the landscape and has never looked back.

Julia Angermeier - Expedition Guide



Julia was born Germany in a small village outside of Frankfurt.

She has always had a love of the outdoors. Camping, hiking, mountaineering, kayaking have been her favorite activities since her childhood.

She started her professional career as an Intensive Care Nurse in 1998 and finished her studies in 2003. She continues this profession today in her time off.

The majority of her time, however, is spent in Puerto Natales (Chile) where she works as a trekking and outdoor guide in Torres Del Paine Nationalpark and other regions in Patagonia some of the most remote and beautiful parts of the world.

In 2019 she started working as a camping- and expedition guide for Oceanwide Expeditions in Antarctica. From the first day on she fell in love with the beautiful and breathtaking nature of the deep south. Becoming a Polar guide was now her goal.

Julia's "Speciality" are still people...telling the known and unknown stories of the most interesting people in the history of exploration of the polar regions became her passion.

Another passion of her is connecting people with nature, and showing the beauty around them. Getting people away from their computers, social media and stress, and giving them a life changing experience.

Julia looks forward to sharing these amazing adventures with her guests on every trip.

Mikhail Barabanov – Expedition Guide



Born in St Petersburg, Russia, but raised in Luxemburg, Mikhail now lives in Switzerland, where he delights in camping all over the local mountainscape.

He spent quite some time in the academic world, obtaining master's degrees in Marine Mammal Science and in Ecology and Nature Conservation. After working for several field seasons as a scientist in distant places on marine mammals and birds, he was keen to pursue a way to combine his passion for travelling, outreach and the higher latitudes.

His deep interest for the polar regions was formed on a visit to Antarctica with Oceanwide in 2018 as part of a university course. At the time, he was stunned by the pristineness and the vibrance of life found in the Southern Ocean and wanted to find a way to return in a professional capacity. As he prefers the world's colder regions, Oceanwide provided the opportunity to immerse himself in the polar world.

No stranger to adverse weather and difficult living conditions, Mikhail is always looking to find places and moments that exude true calm and serenity. As an avid photographer and videographer, he is always seen carrying his gear around from place to place, trying to improve his craft and capture wildlife in their natural behaviour.

Usually in high spirits, he works as a guide on a variety of expeditions, on which he can be found always ready to help and looking to increase his savoir-faire in all things ocean and wildlife.

Saskia van der Meij – Expedition guide



Saskia is an adventurous girl born in the Netherlands. With a huge national park in her backyard, she felt on a young age how great it is to be active in nature. Getting up early, when the world is still asleep, that's when you hear nature at his best.

For more than 20 years she was a dedicated product manager for a nature-orientated tour-operator offering tailor-made self-drive holidays with stays in special accommodations. She's coming home to amazing destinations like Alaska, Canada, Iceland, Australia, New Zealand, Argentina, Chile and

Southern Africa.

In November 2019 she followed her heart and managed a lodge in Namibia for a few months. That was the start of her new career. Working as Head Service on a Tallship taking guests to beautiful places around the Baltic Sea, the interesting north of Norway looking for whales and northern lights and expeditions to mind-blowing Spitsbergen/ Svalbard. In the meantime, also complete various guide-training programs.

Being active outdoors makes her really happy. Multiple-day hikes in the Andes or Himalayas, canoeing around remote islands in Canada or camping on a mountain top overlooking glaciers in Alaska. Ask her and she's up for it. Her heart beats faster when nature 'talks' to her. What better way to share her passion and also finding a way to contribute to nature conversation at the same time!

Hospitality lies in her core and her ongoing 'sunshine' is what guests remember Saskia by. She loves motivating people and sharing her enthusiasm with others is what goes naturally. Colleagues describe her as an energetic Jack-of all-trades with eye for detail.

Alexander Romanovskiy - Expedition Guide



Alexander Romanovskiy comes from Saint-Petersburg, the Northern capital of Russia. He was born in 1981. After having graduated from the boarding school Alexander entered Saint-Petersburg State University, where he spent 5 years studying physical geography, ecology, regional geography and international tourism. Afterwards he was working on his PhD thesis in Herzen State Pedagogical University of Russia, doing geoecological researches.

In the year of 2011 however, Alexander decided to pause his scientific career and start doing something completely different, which means working in tourism and traveling the world. He spent 2 seasons working as a trekking guide in Fann mountains (Tajikistan), 1 season on Novolazarevskaya Antarctic scientific station (Queen Maud Land, Antarctica) working as a member of a guesthouse crew.

Since February of 2012 most part of the year he spends on Svalbard. For five seasons in a row Alexander has been living and working as a guide in a ghost town of Pyramiden. In 2016 a new page in Alexander's guiding career was opened: he started working as a naturalist guide on cruise ships in polar regions of the world – Svalbard and Antarctica.

3 to 4 months a year Alexander dedicates to his main passion – traveling the world. No public transport, no hotels, only hitch-hiking and staying overnight with locals or sleeping in a tent. This way he has already visited almost all Soviet republics, Middle East (Iran, Turkey), Asia (China), South America (Argentina, Chile, Paraguay), and it is hopefully far not the end! The world is big, friendly and interesting to explore!

Paolo Bellezze – Expedition Guide



Born in Argentina (Dec 80') and raised in a stereotypical Italian village by the sea. Paolo finally moved to Scotland where he settled in 2006.

He started sea kayaking in 2011, arguably in one of the best world-wide locations for it, Scotland. Here the scenery includes impressive sea cliffs, rock pillars, sea caves, basalt columns and an abundance of wildlife including whales, basking sharks, dolphins and the most iconic seabirds.

In 2021 he started working full time in expedition cruises, since then he has guided sea kayak expeditions in Antarctica (7), South Georgia (2), Greenland West coast (5) Greenland East coast (2), Iceland (4), Faroes Island (1) British Isles (2).

Before expedition cruises Paolo spent 12 years working shoreside in merchant shipping. He was a Product Manager for a Norwegian company developing Voyage Planning and Marine Weather Forecasting Systems.

In addition to Kayaking, Paolo's biggest passion has been paragliding. Starting at the age of 14 he has instructed both beginners and advanced courses for over 20 years. He went on to guide flying trips worldwide as well as competing at international level. In 2007 he won the British Acrobatic, and has ended up second and third in the Lithuanian and Argentine Nationals. In 2018, together with "Flight of the Swans" expedition, he received the "Britannia Trophy in London. This is a yearly award to civil aviation achievement by the Royal Aero Club in the UK.

Aside from sea kayaking and flying he likes learning new things and connecting with people. He also loves, hiking and moderate mountaineering, munro bagging, motorbikes, history, music, reading and everything polar.

Languages: English, Spanish, Italian.

Alexis Bellezze – Kayak Leader



Alexis Bellezze was born in San Luis, Argentina in 1973. He spent his childhood in the center of the country, in a rural area, then moved to the city of Mendoza close to the Central Andes and studied in the Army High School where he fell in love with the mountains and the outdoors. Then moved to Cordoba where he spent 3 years in the Air Force Academy. After that he moved to Italy where he worked and finished a paragliding course, then returned to Argentina to finish his studies as a Veterinarian. In 2006, he did a Residency in the ICU Service of the Large Animal Hospital of the Royal

“Dick” Veterinary College in Edinburgh, Scotland. In 2006 and 2008 he did an internship as a veterinarian surgeon at Milano, Italy. Then he moved to Villa La Angostura, an isolated village in the middle of the Patagonian Lake District where he works as a veterinarian surgeon and runs a kayak company in the Nahuel Huapi National Park.

Since 2018 he has been working as a Polar Kayak Guide and Expedition Guide. He has guided in the Antarctic Peninsula many times, reaching the Antarctic Polar Circle, Svalbard, circumnavigated Spitzbergen, East coast of Greenland and many rivers and lakes in Patagonia. During the last years he travelled the south and north of Chile and Argentina as a Wilderness First Responder instructor working in different environments like the jungle, the Patagonian mountain range, the windy Patagonian estepa and the desert of Atacama. Since 2014 Alexis is the owner and Director of endurance kayak & mountain expeditions based in Patagonia Argentina, offering multiple days kayak trips in this pristine area.

Alexis is divorced, has 3 children and lives in Patagonia Argentina. He likes to cook for them with fire in the wilderness and go camping when is possible.

He speaks fluently Spanish, Italian and English.

Nick Cunliffe - Kayak Guide



Nick is a professional sea kayak guide, based in North Wales, United Kingdom. He has been paddling for about 30 years and owes many rewarding experiences to his involvement in sea kayaking.

His Anglesey home is an amazing adventure playground, with a wonderful outdoor community and a special sense of place. Nick loves North Wales for its world-class sea kayaking environment.

Nick's background in sea kayaking spans 30 years and includes expedition guiding in arctic Norway, SE

Alaska, and Chilean Patagonia - in addition to leading many sea kayaking journeys in the Hebridean islands of Scotland.

Nick loves to share the experience of exploring wilderness places, of encountering coastal & marine life in its natural environments, and places great value on the rewards that such experiences can offer.

In addition to wilderness sea kayaking, Nick loves to explore mountain environments, as a hiker and climber in the remarkable environments of the European Alps. Closer to home, the mountains of Snowdonia remain his personal favourite destination, only a short distance from his Anglesey home.

Nick looks forward to sharing unforgettable Antarctic experiences with his clients, on future Oceanwide Expeditions trips.

Henrik Enckell - Dive Team Leader



Henrik is an experienced dive instructor and rebreather instructor trainer. He was one of the first dive masters to bring tourists diving in Antarctica.

Henrik has been diving for over 25 years and as a Rebreather Instructor Trainer he is teaching all levels of recreational and technical diving up to Advanced Trimix CCR. He runs the IART (International Association of Rebreather Trainers) Regional Office for Northern Europe and is a member of the IART Board of Advisors.

Henrik is a keen wreck diver and has been involved in deep wreck expeditions all over the world. Some of the interesting wrecks he has visited are the WW2 disasters *General von Steuben* and *Wilhelm Gustloff* in the Baltic and *HMS Victoria* ("the vertical wreck") at 145 meters/475 feet off the Lebanese coast.

His interest for both the ocean and space has engaged him in projects with the European Space Agency (Mars500 project) and the SeaSpace Exploration and Research Society (Project Poseidon) among other adventures. He has a military background having served in peace keeping and peace enforcing missions in the Middle East and former Yugoslavia. He has also led dive expeditions in the Antarctic and Arctic regions during almost 20 years and he was one of the first persons to take people diving on expedition vessels in these remote, challenging and many times undived waters.

Henrik holds a M.Sc. degree in Electrical Engineering and is working in the automotive industry when not travelling to the polar regions. He has lived and worked in Tokyo, Japan for two years and he is currently living in India with his wife, his three teenage daughters and his 5-year-old son.

Mike Pumm - Dive Team Leader



Mike was born in Switzerland 1987, he is owner and dive instructor of a dive company in Central Switzerland. He dives in surrounded lakes several times a week where he prefers technical diving but cave diving as well.

Few years ago, he and his wife got the chance to live abroad and manage a dive resort in Roatan, Honduras.

Since they are back in Europe, he prefer diving in polar regions. His first time in Antarctica was 2016, when he joined a trip with Oceanwide

Expeditions as a guest and got infected with the „polar bug“.

From then on, he enjoys every trip few times a year as a dive guide with Oceanwide Expeditions - no matter if Arctic or Antarctic as long as it is cold and icy.

Now, he is really looking forward to this journey with you as dive guide and dive team leader.

Emma Röttger – Ship's doctor



Dr. Röttger was born and raised in the Netherlands. This is also where she trained as a physician.

After obtaining her medical degree she further specialised in Emergency Medicine, finishing her training in January of 2020. The Covid-19 outbreak brought unexpected challenges in her new role as a consultant, but she enjoys every aspect of her chosen field.

During her training to become a medical doctor, and later during her specialisation, she spent a fair share of her training abroad. This included an

exchange programme with Egypt, an elective in Ghana, and a 3-month rotation in New Zealand.

During these overseas training opportunities, she also travelled the countries she visited and learned about their cultures and experienced the overwhelming (natural) beauty. Now mostly European bound, she spends her holidays exploring various mountain ranges, developing her mountaineering skills.

Despite having travelled to several continents, she has never been to Antarctica before and is very excited to be able to do so now.



Antarctica Learning & Discovery Voyage
Tuesday 13th December 2022
Embarkation - Ushuaia

WELCOME ABOARD!

Luggage will be delivered to your cabin. Please make check to make sure you have received all your luggage. If you have any extra luggage in your cabin – please notify a crew member.

**** Tea and coffee are always available in the lounge on deck 5 ****

±1715 **Welcome & safety briefing** - Please join us in the **lounge** (deck 5, forward) for a welcome to the voyage, followed by a **mandatory** safety briefing and lifeboat drill.

Lifeboat Drill

All guests accommodated on Deck 3 (Cabins 301-337) will go to MUSTER STATION A which is the Restaurant on Deck 4

All guests accommodated on decks 4, 6, and 7 will go to MUSTER STATION B which is the Observation Lounge on Deck 5

±1800 **Departure from Ushuaia.**
The bridge will be closed during these operations.

1830 **Expedition Introduction & Captain's Welcome** – Please join us in the **lounge** (deck 5) for an introduction to the expedition, a welcome to your new home from the Hotel manager, the captain's toast and to meet your expedition team.

1930 **Buffet dinner** is served in the **dining room** (deck 4)

We will sail into open sea this evening and the ship may move – please secure your belongings and be careful when moving around the ship.

Take your seasickness medication before we head out into open sea- the doctor will be available in the lounge after dinner to assist.

- 0745 **Wakeup call** - Good Morning!
- 0800 **Breakfast** is served in the **dining room** (deck 4).
- 1030 **Whales of the Southern Ocean** – Please join Pippa in the **lounge** (deck 5) for a lecture about the whales of Antarctica.
- 1145 **Muck Boots** - We will call you by deck to collect your Muck boots from the boot room on **deck 3**. *Please bring your thick socks to make sure you have the perfect fit! **Please listen for announcements.***
- 1230 **Lunch** will be served in the **dining room** (deck 4).
- 1400 **Diving briefing** – Divers please meet Henrik and Mike in the **lecture room** (Deck 5) for a mandatory diving introduction and briefing.
- 1400 **Belgian Antarctic Expedition** – Please join Rose in the **lounge** (deck 5) for her lecture on the first overwintering South of the Polar circle.
- 1500 **Kayaking briefing** – Kayakers, please join Alexis and Nick in the **lecture room** (deck 5) for a mandatory kayak introduction and briefing.
- 1600 **Pinnipeds of the Southern Ocean** – Please join Charlotte in the **lounge** (deck 5) for a lecture about the seals of Antarctica.
- 1700 **Camping Briefing** – Campers please meet Paolo and Gonzalo in the **lecture room** (deck 5) for a mandatory camping introduction and briefing.
- 1800 **Recap** – Please join the Expedition team **in the lounge** (deck 5) for our first daily recap and briefing.
- 1900 **Dinner** is served in the **dining room** (deck 4) – *Tonight’s dinner will be plated – please make your way to the dining room promptly.*

“The Sea, once it casts its spell, holds one in its net of wonder forever.”
— Jacques Cousteau

Please walk slowly on the ship, never rush. Keep one hand for yourself but at least one hand for the ship. Shut all doors firmly and keep fingers away from door frames.

- 0745 **Wakeup Call** – Good Morning!
- 0800 **Breakfast** is served in the **dining room** (deck 4).
- 0915 **Zodiac & IAATO Briefing** - Please join us in the **lounge** (deck 5) for our **mandatory** zodiac and IAATO briefings. All passengers must attend this briefing if they wish to land or zodiac cruise in Antarctica.
- 1100 **Antarctic Penguins** - Please join Carina in the lounge (deck 5) for her lecture exploring the penguins we are likely to encounter on our voyage.
- 1200 **Kayak Gear Collection** – If you are kayaking on this voyage, please meet Alexis and Nick at the **forward shell door** (deck 3) to collect your kayak gear.
- 1230 **Lunch** is served in the **dining room** (deck 4).
- 1400 **Biosecurity:** We will call you by deck to the **shell door area** (deck 3) to complete our biosecurity cleaning – please bring all your outerwear, backpacks, muck boots and tripods/walking sticks to be cleaned and/or checked. *Please listen for announcements.*
- 1630 **Antarctic Ice** – Please join Szymon in the **lounge** (deck 5) for his presentation examining the different types of ice that can be found on, and around, Antarctica.
- 1800 **Recap** – Please join the Expedition Team in the **lounge** (deck 5) for our daily recap and briefing.
- 1900 **Dinner** is served in the **dining room** (deck 4) – *Tonight’s dinner will be plated – please make your way to the dining room promptly.*

‘No one has lost courage; with such comrades one should be able to manage under, I may say, any circumstances.’ - Salomon August Andrée, Swedish polar explorer

Please walk slowly on the ship, never rush. Keep one hand for yourself but at least one hand for the ship. Shut all doors firmly and keep fingers away from door frames.

0645 **Wake up call.** Good morning!
0700 **Breakfast** is served in the **dining room.**

This morning we hope to offer zodiac cruise at Orne harbour – with beautiful Antarctic scenery and the chance of spotting Chinstrap Penguins & marine wildlife

0800 **Red Group** - Please come to the **zodiac boarding area** (deck 3) for a zodiac cruise in Orne Harbour
0800 **Divers** - Please meet Henrik and Mike on the **zodiac deck** (deck 5)
0815 **Blue Group** - Please come to the **zodiac boarding area** (deck 3) for a zodiac cruise in Orne Harbour
0820 **Kayakers: Group 1** - Please come to the **zodiac boarding area** (deck 3)
0940 **Kayakers: Group 2** - Please come to the **zodiac boarding area** (deck 3)

1230 **Lunch** will be served in the **dining room.**

This afternoon we hope to land at Brown Station, a continental landing and home to an Argentinian base (currently unoccupied). We also hope to offer a zodiac cruise around Paradise Bay. The Blue group will come to shore first, whilst the Red group will cruise in Paradise. The groups will then swap halfway through the afternoon on the shoreline. Both groups will thus enjoy both activities.

1430 **Blue Group** - Please come to the **zodiac boarding area** (deck 3) for a landing at Brown Station
1430 **Divers** - Please meet Henrik and Mike on the **zodiac deck** (deck 5)
1445 **Red Group** - Please come to the **zodiac boarding area** (deck 3) for a zodiac cruise in Paradise Bay
1500 **Kayakers** - Please come to the **zodiac boarding area** (deck 3)

1900 **Recap** – Please join the expedition team in **the lounge** for our daily recap.
1930 **Dinner** is served in the **dining room.**

+/- 2100 **Camping** – This evening we hope to offer camping at Leith Cove in Paradise Bay. We will confirm whether camping will proceed once we have assessed conditions. Please standby for announcements.

0715 **Wake up call.** Good morning!

0730 **Breakfast** is served in the **dining room** (deck 4).

This morning we hope to offer a zodiac cruise at Foyn Harbour – a spectacular archipelago in the north east corner of Wilhemina Bay. It is also the final resting place of Governoren, a whaling factory ship which caught fire in 1915, now lying abandoned on the east coast of Enterprise Island.

0915 **Red Group** - Please come to the **zodiac boarding area** (deck 3) for a zodiac cruise in Foyn Harbour.

0915 **Divers** - Please meet Henrik and Mike on the **zodiac deck** (deck 5).

0930 **Blue Group** - Please come to the **zodiac boarding area** (deck 3) for a zodiac cruise in Foyn Harbour.

0940 **Kayakers** - Please come to the **zodiac boarding area** (deck 3).

1230 **Lunch** will be served in the **dining room** (deck 4).

1345 **Recap** – Please join the expedition team in **the lounge** for our daily recap.

This afternoon we hope to land and zodiac cruise at Danco, a small island in the Errera channel surrounded by icebergs and home to several gentoo penguin rookeries. During the landing, we hope to offer a hike to the upper colony, gaining approximately 130m elevation over a 1.5km trail. The blue group will come to shore first, whilst the red group will cruise in the Errera. The groups will then swap onshore halfway through the afternoon.

+/-1530 **Blue Group** - Please come to the **zodiac boarding area** (deck 3) for a landing at Danco Island.

+/-1530 **Divers** - Please meet Henrik and Mike on the **zodiac deck** (deck 5).

+/-1545 **Red Group** - Please come to the **zodiac boarding area** (deck 3) for a zodiac cruise around Danco island.

+/-1600 **Kayakers** - Please come to the **zodiac boarding area** (deck 3).

1930 **A special Antarctic Dinner** – Dress warmly.

At approximately 0600 this morning we hope to transit through the spectacular Lemaire Channel. Many photographers describe this channel as the 'Kodak Gap', considered one of Antarctica's most photogenic passages. We thus encourage you to enjoy the towering glaciers and wildlife from the outer decks of Hondius.

0645 **Wake up call.** Good morning!

0700 **Breakfast** is served in the **dining room**.

This morning we aim to land and zodiac cruise at Petermann Island. On land, we will enjoy Adelie penguins and spectacular views, whilst in the zodiacs, we will cruise amongst icebergs and in search of wildlife.

0800 **Red Group** - Please come to the **zodiac boarding area** for a landing at Petermann Island.

0800 **Divers** - Please meet Henrik and Mike on the **zodiac deck**.

0815 **Blue Group** - Please come to the **zodiac boarding area** for a zodiac cruise around Petermann Island.

0830 **Kayakers** - Please come to the **zodiac boarding area**.

1230 **Lunch** will be served in the **dining room**.

In the afternoon we hope to land and cruise at Damoy point. Here we hope to enjoy gentoo penguins, a long walk and stunning Antarctic scenery

1600 **Blue Group** - Please come to the **zodiac boarding area** for a landing at Damoy Point.

1600 **Divers** - Please meet Henrik and Mike on the **zodiac deck**.

1615 **Red Group** - Please come to the **zodiac boarding area** for a zodiac cruise around Damoy point.

1645 **Kayakers** - Please come to the **zodiac boarding area**.

1915 **Recap** – Please join the expedition team in **the lounge** for our daily recap.

1930 **Dinner** served in the **dining room**. Bon Appetit!

- 0700 **Wake up call.** Good morning!
0715 **Breakfast** is served in the **dining room**.

This morning we hope to offer a landing at Port Lockroy – the world’s Southernmost Post Office. We will visit Port Lockroy in three groups for 1 hour each. Please listen for announcements for your group time. You can find your group number on lists opposite reception. Whilst at Port Lockroy, please wear a face mask when in doors and clean your boots in fresh water provided before entering. If you plan to make a purchase, card payments are preferred.

- 0815 **UK Heritage Trust – Port Lockroy Briefing** – Please join the team from Port Lockroy in the **lounge** for a briefing about the history of Port Lockroy and the heritage trust’s enduring work.
- +/- 0900 **Group 1** - Please come for **zodiac boarding**. *Listen for announcements.*
0915 **Medical History of Antarctica** – Please join Julia in the **lounge** for her presentation exploring the fascinating world of Antarctic healthcare.
- +/- 1000 **Group 2** - Please come for **zodiac boarding**. *Listen for announcements.*
+/- 1100 **Group 3** - Please come for **zodiac boarding**. *Listen for announcements.*
1115 **Medical History of Antarctica** – Please join Julia in the **lecture room** for her presentation exploring the fascinating world of Antarctic healthcare.
- 1230 **Lunch** will be served in the **dining room**.

This afternoon we hope to offer a landing and zodiac cruise at Cuverville Island – one of the largest Gentoo Penguin colonies on the Peninsula.

- 1600 **Blue Group** - Please come to the **zodiac boarding area** for a landing at Cuverville Island.
1600 **Divers** - Please meet Henrik and Mike on the **zodiac deck**
1615 **Red Group** - Please come to the **zodiac boarding area** for a zodiac cruise around Cuverville Island.
1630 **Kayakers** - Please come to the **zodiac boarding area**.
- 1915 **Recap** – Please join the expedition team in the **lounge** for our daily recap.
1930 **Plated dinner** served in the **dining room**.

At approximately 0630 this morning we hope to transit through Neptune's Bellows into Deception Island, an active volcano located in the South Shetland Islands. The transit will not be announced; however we strongly encourage you to set your own alarm so that you can enjoy this scenic passage from the outer decks. Once inside the caldera, we will spend the day exploring both Telefon Bay and Whalers Bay.

- 0645 **Wake up call.** Good morning!
0700 **Breakfast** is served in the **dining room**.

This morning we aim to offer a landing at Telefon bay, a steep valley littered with volcanic craters and ash cliffs. During our landing, we hope to hike to a scenic viewpoint, gazing down upon the craters scattered across Deception's northern coast.

- 0800 **Red Group** - Please come to the **zodiac boarding area** for a landing at Telefon Bay.
0800 **Divers** - Please meet Henrik and Mike on the **zodiac deck**
0930 **Blue Group** - Please come to the **zodiac boarding area** for a landing at Telefon Bay.

1200 **Lunch** will be served in the **dining room**.

This afternoon we aim to visit Whalers Bay, an abandoned whaling station and British research facility located near the entrance to Deception Island. During our landing, we hope to walk upon relics of the whaling and heroic eras, visiting the buildings, aircraft hangers and oil tanks that can be found along the thermal coastline.

- 1300 **Blue Group** - Please come to the **zodiac boarding area** for a landing at Whalers Bay
1315 **Divers** - Please meet Henrik and Mike on the **zodiac deck**
1420 **Red Group** - Please come to the **zodiac boarding area** for a landing at Whalers Bay

1800 **Recap** – Please join the expedition team in **the lounge** for our daily recap.
1900 **Plated dinner** served in the **dining room**.



Antarctica
Discovery and Learning Voyage
Wednesday 21st December 2022
At sea to Ushuaia

No wakeup call – Have a lovely morning!

0800 **Breakfast** is served in the **dining room**.

0900-1000 **Photo competition** – Did you take some amazing images during our trip? Enter your best shot into our photo competition! Please join Mikhail in the **library** near the coffee machine to submit your best images.

Pictures will be displayed all day in the lounge throughout the afternoon where you will be able to vote for your favourite pictures.

1030 **Drifting Life** – Please join Chloe in the **lounge** to learn about the plankton drifting in the depths of Antarctica.

1230 **Lunch** will be served in the **dining room**.

1400 **Antarctic geopolitics** – Please join George in the **lounge** for a lecture exploring the wonderful world of polar politics and the emergence of the Antarctic Treaty.

1600 **Antarctic Fishies** - Please join Tiphanie in **the lounge** to learn about the weird and wonderful world of the Southern Ocean.

1715 **Muck Boot Collection** – We will call you by deck to return your muck boots to the **shell doors on deck 3**. Please listen for announcements.

1800 **Recap** - Please join the expedition team in the **lounge** for our daily recap.

1900 **Dinner** will be served in the **dining room**.

2100 **Photo competition** - Please join Mikhail in the **lounge** to reveal the competition winners.

No wakeup call – Enjoy your morning!

0800 **Breakfast** is served in the **dining room**.

1000 **Kayak Gear Return** – Kayakers, please return all your kayaking gear to the **forward shell door** on deck 3.

1100 **Mini Lecture Series** - Please join the expedition team for a series of short lectures and stories about Antarctic exploration, the remnants of Soviet expansion in the polar regions and humpback whale song.

1230 **Lunch** will be served in the **dining room**.

*After lunch you will receive your bill in your cabin. We will call you by deck to make payments at reception – **Please listen for announcements.***

1400 **Marine Mammal Acoustics** – Please join Mikhail in the **Lounge** to learn about the fascinating sounds of whales and dolphins.

1600 **Mini Lecture Series** – Please join the expedition team for a series of short lectures and stories about the kayaking activities onboard this voyage, the proliferation of marine plastics and the everchanging Antarctic climate.

1815 **Farewell Toast & Trip Slideshow** - Please join the Captain and the expedition team in the **lounge** for a toast to our voyage through the Southern Ocean and a slideshow of our expedition.

1900 **Dinner** will be served in the **dining room**.

*Please walk slowly on the ship, never rush. **Keep at least one hand for the ship.** Shut all doors firmly and keep fingers away from door frames.*



Antarctica
Discovery and Learning Voyage
Friday 23rd December 2022
Disembarkation - Ushuaia

0715 **Wakeup call** – Good Morning!

0730-0830 **Breakfast** will be served in the dining room.

*Please place your large/check-in luggage outside your cabin no later than 0730.
During breakfast we will collect your luggage and deposit it on the pier where it will
be your responsibility to identify and collect each item.*

0830-0900 **Disembarkation – Please listen for announcements.** We will inform you
once we have been cleared by local authorities. Once clearance has
been completed we will invite you to the gangway to disembark
Hondius.

*Upon disembarkation, **please identify and collect your luggage** from the pier and;*

- 1. Take it with you into Ushuaia and walk into town.*
- 2. Put it on the airport bus and get on the bus.*
- 3. Put it in the luggage truck.*
- 4. If you have arranged your own transport – please take your luggage*

***On behalf of all at Oceanwide Expeditions and all on board Hondius we
thank you for a truly incredible expedition.
Safe travels home.***