



OCEANWIDE

EXPEDITIONS

Falkland Islands- South Georgia- Antarctica

4 January 2023 – 22 January 2023,
Ushuaia – Ushuaia

Onboard M/V Hondius



M/v Hondius was built in 2019, as the first-registered Polar Class 6 vessel in the world, meeting the latest and highest Lloyd's Register standards for ice-strengthened cruise ships. Surpassing the requirements of the Polar Code adopted by the International Maritime Organization (IMO), *Hondius* represents the most flexible, advanced, innovative touring vessel in the polar regions, thoroughly optimized for exploratory voyages that provide you the utmost first-hand contact with the Arctic and Antarctica. *Hondius* complies with the latest SOLAS-regulations (Safety Of Life At Sea). *M/v Hondius* is 107.6 m long, 15.3 m wide and has a maximum draft of 5.3 m, Polar Class 6 (equivalent 1A-Super), 15 knots average cruising speed and has 2 x ABC main engines; total 4,200 kW.

Captain Toni Salo [Finland]

and his international crew of 49 sailors

Staff Captain:	Miia Holma	[Finland]
Chief Officer:	Matei Mocanu	[Romanian]
Second Officer:	Igor Nazarov	[Russia]
Third Officer:	Don Buren	[Netherlands]
Hotel Manager:	Michael Frauendorfer	[Austria]
Head Chef:	Gaurav Bawa	[UK]
Sous Chef:	Milos Simeunovic	[Serbia]
Sous Chef	Mihai Melinte	[Romania]
Sous Chef	Sachin Naik	[India]
Ships doctor:	Inna Kammerer	[Kazakhstan]
Expedition Leader:	Pippa Low	[UK]
Ass. Expedition Leader:	Szymon Niezabitowski	[Poland]
Ass. Expedition Leader	Chloe Marechal	[France]
Dive Guide	Pete Shaw	[UK]
Dive Guide	Will Gilbertson	[UK]
Dive Guide	Michael Green	[UK]
Expedition Guide:	Sasha Romanovski	[Russia]
Expedition Guide:	Dorette Kuipers	[Netherlands]
Expedition Guide:	Mikhail Barabanov	[Russia/Luxemburg]
Expedition Guide:	Lothar Kurtze	[Germany]
Expedition Guide:	Charlotte Taplin	[UK]
Expedition Guide:	Julia “Lotti” Wellner	[Germany]
Expedition Guide:	Julia “Bee” Baldursdottir	[Iceland]
Expedition Guide:	Julia Angermeijer	[Germany]
Expedition Guide:	Typhanie May	[Falkland Islands]
Expedition Guide:	Felicity Johnson	[UK]
Expedition Guide:	Gertruide van der Meij (Saskia)	[Netherlands]
Expedition Guide:	Carina Ketterer	[Switzerland]

We welcome you on board!

Day 1 – Wednesday, 4 January 2023, Ushuaia, Embarkation Day

12h00 GPS Position: At Port Ushuaia

Wind: SE-7 • Sea: At Port • Weather: Overcast • Air temp: 8°C • Sea temp: 10°C



Today is the day to embark M/V Hondius, the beautiful 107 metre vessel that will take us to explore Antarctica. After visiting Ushuaia, the southernmost city in the world, we embark the ship at 4pm and are met by the staff and crew who warmly welcome us onboard. After checking in we are directed to our cabins, followed by the lounge for tea, coffee and biscuits. The Chief Officer, Matai, gives us a mandatory safety brief, we all get involved in the

safety drill where we are shown to our lifeboats.

At 6.30pm it is time for Captains cocktails to celebrate the beginning of the voyage with a glass of prosecco and delicious canapes. Captain Toni makes a welcome speech and we all toast to a good trip ahead. The Expedition Staff introduce themselves; it is interesting to meet all of them and learn where they are from. As the ship sails through the Beagle Channel, it is time for our first meal on board by way of a fantastic buffet. The excited chat at dinner is all about the journey ahead and the adventures that lay before us.



Day 2 – Thursday, 5 January 2023, at sea towards the Falkland Islands

12:00 GPS Position: 53°42.1'S / 063°43.3'W

Wind: NW-4 • Sea State: slight • Weather: Clear Sky • Air Temp: 7,5° C • Sea temp: 9°C

Our first day at sea on the way to the Falkland Island starts with a wakeup call from our expedition leader Pippa: ships position, weather, winds and temperature - we know it all before even getting up.

We enjoy a lovely breakfast and then start this day filled with preparations for the trip and especially the Falkland Islands.

We start with the mandatory zodiac briefing during which we learn how to put on our zodiac life jackets which are different from the ones we used yesterday during the drill.



We now know where to find the shell doors, know how to embark and disembark a zodiac, how to dress and how to behave – all this is new to us and very exciting.

Shortly after that, Tiphonie invites us to her introduction to the Falkland Islands – she grew up there and still lives in Stanley. You do not often get a chance to get insights in such a remote place by a local. A very interesting and amusing lecture.

At around 12h, “boot camp” starts. We are called by decks down to the expedition deck where Muck Boots are fitted, and we all leave with a pair we call ours for the next 18 days.

Lunch gives us a well-deserved break from a lot of information – more is to come.

After a short break, it is time for biosecurity to avoid any import of alien species to the Falklands. All our outer gear is going to be properly cleaned – the vacuum cleaner goes over everything and into every single pocket. Velcro are scratched free from any fiber that we can find, shoes and tripods are cleaned and disinfected.



Later this afternoon, Carina shares with us her passion for penguins and introduces us to all the species we will most probably see on our journey.

During the daily recap, Pippa, our Expedition Leader presents the plans for tomorrow as we will be arriving in the Falkland Islands and have our first landings and activities there.

A lovely dinner concludes a great day, and we are very much looking forward to tomorrow.

Day 3 – Friday, 6 January 2023, Carcass Island and Saunders Island

08:00 GPS Position: 51°18.3'S / 060°33.4'W

Wind: W-3 • Sea State: calm • Weather: Partly Cloudy • Air Temp: 13° C • Sea temp: 12,5°C



We are here! The Falkland Islands! Today we wake up by the wake-up call of our Expedition Leader Pippa who tells us about weather and wind conditions for our very first landing here at Carcass Island. And it looks just brilliant! Very little wind and warm, sunny weather...perfect conditions for a first experience in Zodiacs and on land.

After breakfast we go straight back to our cabins to prepare for Carcass Island. We put on our waterproof gear, pack our backpacks with camera and binoculars, put on some sunscreen and at 08:30 we all meet at the shell doors. For some of us this is the first time ever wearing a lifejacket and going on a zodiac ride. How exciting! The Expedition team is shuttling us to the designated landing beach where Pippa awaits us and gives us a short briefing about Carcass Island. The first group who comes to the beach are the people who signed up for the longer hike over the island to the settlement where the McGill family awaits all of us with a treat: Coffee, tea and huge choice of delicious homemade cakes and cookies. But first we start our activities. Those of us who are not hiking enjoy a walk to the other side and the other beach of the island. On our way to the beach, we encounter our first Penguins! Magellanic Penguins and Gentoo Penguins with their chicks! It is just fantastic! Many other birds surround us as well as the brown Skua, Upland Geese, Tussac birds and Magellanic Oystercatchers. We enjoy the landscape, the wildlife and take a lot of photos. Now it is time for the promised treat at the settlement of the McGill family which owns the island and has been sheep farming there for over a century. We get there by zodiac again and enjoy a summer day in the beautiful garden of the Carcass house with a cup of coffee or tea and one or two pieces of these really fantastic pastries! With a huge thank you to our hosts we slowly start heading back to the jetty where the zodiacs are waiting for us to bring us back to Hondius. What a perfect morning!!!



During lunch the ship repositions and shortly after lunch we are going out again to our second destination of the day: Saunders Island!

As we arrive at the landing beach the owner of the Island David Pole-Evans and his family awaits us with a warm welcome. We start following the well-marked trail up to the albatross colonies passing by different penguin colonies of different penguin species. From the vocal Gentoos to the elegant Kings, from the active Magellanics walking on the white sandy beach to the funniest Rockhoppers.... we see them all! It is just breath taking the variety of wildlife here! And all these chicks!!!!



We see albatross flying, bonding with their chicks, feeding them and Adam the brother-in-law of David spends some time with us at the colony to talk and explain and share about “their” albatross. Sadly, at one point an absolutely fantastic day comes to an end and slowly we all make our way back to the landing beach. We put on our life jackets, take a last look into the little shop of self-made souvenirs in the back of one of the land rovers and head back to Hondius. After the daily recap where we learn about our plans for tomorrow and our Expedition guide Tiphannie gives us some useful and interesting information about Stanley, the hotel and restaurant crew already awaits us in the dining room and we have a wonderful dinner with not only delicious

food but also interesting conversations and sharing of our experiences of our first day at the Falkland Islands.

Day 4 – Saturday 7 January 2023, Stanley

08:00 GPS Position: 51°41.2'S / 057°51.3'W

Wind: N-5 • Sea State: calm • Weather: Overcast • Air Temp: 8°C • Sea temp: 13,2°C



This morning we wake up to the wake-up call from our expedition leader Pippa who is already giving us some information about the weather conditions outside. It is still warm and not very windy but it's raining just a little bit. After breakfast we get ready for our second landing day which will be at Stanley, the main city in the Falkland Islands. Prepared with a street map we make our way through this beautiful little town. We visit the visitors centre, some souvenir shops, the churches, and the very

interesting and lovely historic dockyard museum. We have a cup of coffee in one of the little cafés and of course after our “city tour”, we finish in the Gin distilleries where we of course buy some original Falkland Gin to bring back home to our families and friends as a gift.

Back on Hondius we have lunch as we are hungry from the morning activities. After a little break we are invited to listen to the first lecture of the afternoon. Expedition Guide Michael tells us his very interesting story about his experiences during the Falkland War in 1982. The next lecture planned for the afternoon is given by Expedition guide Felicity who is talking and explaining about the Southern Ocean. Full of new knowledge and a lot of information to think about we start our evening program with the daily recap where Pippa tells us about the next day at sea and what to expect. Also, more information is delivered by the expedition team about the colossal squid, how the members of the early expeditions survived, the different direction in which a ship can move and about the solar system sky walk in Stanley.

Now it's time for dinner which is again absolutely delicious. After dinner, we had the chance to enjoy a beautiful sunset and at 22:30 it was dark enough for Stargazing.

Lothar showed the planets Jupiter and Mars in the North-West near the horizon. The constellation of Orion became visible with the chance to spot the Orion Nebular with binoculars. Finally, the southern constellations came out and we could observe Alpha Centauri and the Southern Cross, in the direction of the centre of our milky way. A perfect end to a perfect day!



Day 5 – Sunday 8 January 2023, at sea

12:00 GPS Position: 52°30.4'S / 050°38.1.3'W

Wind: SW-4 • Sea State: slight • Weather: Overcast • Air Temp: 7° C • Sea temp: 10,5°C

Today we have a sea day as we are heading for another highlight of this trip, South Georgia. A perfect day for some interesting lectures and keeping our eyes out for birds.

At 10.00 we start with a lecture in the lounge from Mikhail, where he shares his knowledge with us about bird migration. And we learn more about why and how birds cover great distances from nesting to wintering grounds.



Shortly after most of us go outside to attend the Bird Identification at the stern of Hondius on decks 5, 6 and 7. The expedition staff is there at 11:00 to help identify the different birds hovering around the ship. Sensational is the visit of the **Wandering Albatross**, the one with the largest wingspan of 3,5 meters.

Although there is also a lot of excitement for the typical yellow shiny beak and beautiful light greyish colourisation of the **Grey-Headed Albatross**. Besides that, two regular visitors fly, the **Northern** and **Southern Giant Petrel**, hard to distinguish but the Northern has a more reddish bill compared to the greenish from his Southern brother. We also see **White-chinned Petrels**, **Fairy Prions**, **Black-bellied Storm-Petrels** and a flock of **Great Shearwaters**.

After lunch at 14.00 Lothar explains in his lecture "Orientation on the Southern Sky" many constellations visible only in the southern hemisphere. Including Centaurus, Southern Cross, Carina, Vela and the False Southern Cross. In the recap we also hear about the planets, stars and nebulas we observed during the Star Gazing last night.

While the scones with clotted cream and jam are served at 16.00, Saskia shows us the untold side of the polar exploration. Two great stories about wives of famous explorers, Kathleen Scott and Jo Peary. We finish the day off with another delicious meal.

Day 6 – Monday 9 January 2023, South Georgia

12h00 GPS Position: 53°10,9'S / 043°10,6'W

Wind: N-4 • Sea: Slight • Weather: Overcast • Air temperature: 3°C • Sea temp: 7,2 °C

Today we were woken by the wakeup call from our expedition leader Pippa giving us the weather information and the activities for the day. We quickly prepared ourselves for the day before heading to the dining room for a hearty breakfast. Today we would be learning about our next destination which we would reach tomorrow...South Georgia!

After breakfast we all made our way to the lounge for the mandatory South Georgia briefing and IAATO video. We learned about the rules of visiting South Georgia and how to deal with certain hazards such as aggressive fur seals! After the briefings we had some free time and then at 11 we joined Tiphonie in the lounge for a lecture titled "Introduction to South Georgia". We learned a lot about South Georgia including how the government works, a brief history and sights of South Georgia. After the lecture it was time for lunch. We had a wonderful buffet lunch whilst we watched the world go by through the restaurant windows. The weather was extremely kind to us and we were able to see the a variety of graceful birds following the ship.



After lunch it was time for us to bio-secure our outer wear again ready for landing on South Georgia. We were called down to deck 3 deck by deck and the expedition staff helped us inspect and clean our gear. We had to make sure all biological material from the Falklands was removed and safely discarded. Once our gear was all cleaned, we again had some free time.

At 4pm we started to see the silhouettes of Shag Rocks in the distance. Our first sighting of South Georgia! As we looked for the rocks in the fog, we started to get a glimpse of the wonderful wildlife of South Georgia. We spotted lots of whale blows! A humpback swam past close to the ship followed by several fur seals. A beautiful juvenile wandering albatross glided effortlessly through the air in front of the ship.

After a little while it was time for us to head to the lounge for recap. The expedition staff gave us several small presentations on different things related to our journey. We learned to identify seabirds, where maritime words come from, how albatross fly and the danger of fur seal bites. After a full day of learning and watching the views, we were finally called down to dinner for a delicious meal before heading to our cabins for a well-earned nights rest.

Day 7 – Tuesday 10 January 2023, South Georgia

08h00 GPS Position: 54° 02,4'S / 037°18,5,W

Wind: WNW-6 • Sea: Moderate • Weather: Partly Cloudy • Air temp: 6°C • Sea temp: 6,5°C

Finally, after two and a half days of navigation, Hondius arrived at the misty and mysterious coast of South Georgia. The island met us with rain, wind and dark clouds looming over the tops of the mountain chain. It looked like the island of South Georgia was challenging us, whether we dare to try to land or retreat without a fight. Or maybe the spirit of the island decided that we had to earn the right to discover its secrets by first experiencing the worst conditions.

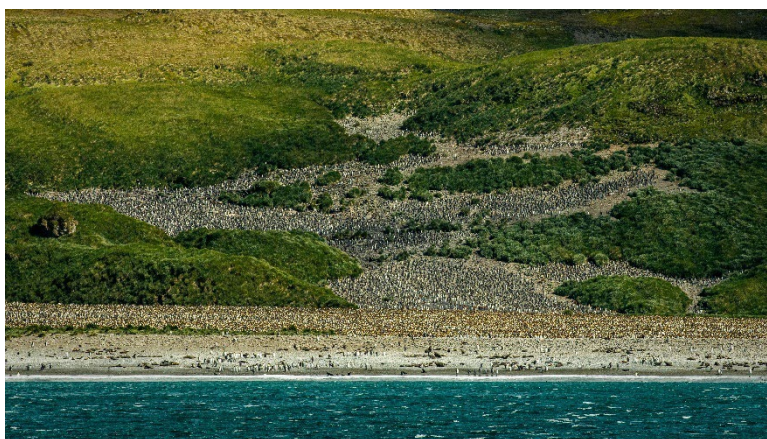


The terrible weather forecast given to us by Pippa, the expedition leader, got justified in its entirety: the wind was 30 to 40 knots with gusts of up to 55 knots. The plan was to try to land at a place called Salisbury Plain, but when we arrived there, it was clear that we would not be able to do that. The plan got corrected and we headed to a place called

Rosita Harbour. There, the expedition team put the Zodiacs on the water and after a quick scouting we were given a green light to land.

Those of us who were supposed to land later could watch the first Zodiacs with passengers raising clouds of splashes into the air when bumping choppy waves were slowly moving towards the shore. South Georgia refused to admit its defeat and the wind started picking up. After 3 or 4 Zodiacs disembarked their passengers on the shore of Rosita harbour, the Captain and the Expedition Leader had to make a hard decision of aborting the landing and evacuating everybody back onboard.

It took time to get all the passengers back, because due to strong gusts of wind, piloting of Zodiacs was not safe at all. After some maneuvering, captain Tony had Hondius repositioned closer to the shore and turned perpendicularly to the direction of the wind. Thus, a lee was created, and all the Zodiacs were able to approach the shell doors and disembark the passengers.



The rest of the time before lunch was dedicated to a lecture by one of the expedition guides.

In the meantime, Hondius sailed back to Salisbury Plane. The weather conditions had not improved. Well, it became sunny, but the wind stayed very strong. We decided to wait and see if any positive changes occur. Charlotte, an expedition guide, gave us a lecture about whales and pinnipeds of the Antarctic region.

Our expedition team, when the wind seemed to have dropped a little, made an attempt to land, but their Zodiac had to return very soon as the landing had proven itself to be impossible.

Sadly, we had to admit our defeat. The rest of the afternoon we spent on the open decks looking at the colony of penguins from a distance. At 18:15 we had a recap followed by dinner. We could only hope that the wind would drop by tomorrow and we would be able to do some activities. Well, this is an expedition cruise after all. Nobody promised that it would be easy.

Day 8 – Wednesday 11 January 2023, Fortuna Bay

12h00 GPS Position: 54°08,8'S / 036°43,3'W

Wind: WSW-8 • Sea: Calm • Weather: Overcast • Air temperature: 4° C • Sea temp: 5.1°C

A new day and new hopes of better weather conditions. We are anchored in Fortuna Bay, the sun is shining but the wind blows heavily. The expedition team makes its way to land and Pippa decides that it will be a “go” for the landing, but it is too windy for a zodiac cruise. While one group will be on land, the other will stay on the ship. We are just happy if we can finally all get our feet onto South Georgia.



We land on a black sandy beach surrounded by king penguins and fur seals of all ages and sizes. The backdrop of Fortuna Bay is lush green land and mountains. A walk is flagged to lead us to a small end in some distance from which we will have an overview of a king penguin colony with moulting adults and fluffy brown chicks - thousands of them. It is magical. On the way, we can see lots of king penguins standing or walking

around, alone or in groups. Fur seal pups and adults are also to be seen all over the place.

In the afternoon, we hope to visit Grytviken which has been the centre of human activity since 1904 when C.A. Larsen established the first whaling station in South Georgia. In its cemetery, you can visit the grave of the great explorer Ernest Shackleton. As we

will get inspected by the Government Officials there, we do return to biosecurity and clean all our clothes and gear. We are getting pretty good at this.

But even before approaching Grytviken, Pippa has received news that the wind in the sheltered bay is about 60 knots. This wind is way too strong to allow any safe operation and we need to change our plans. Not far away is a small bay called "Godthul" which means "good cove" in Norwegian, it is well sheltered, and we plan for a zodiac cruise. But even here the wind speed is excessive, and we need to cancel this plan too and leave the bay.



We will stay in the area, just outside the bay at sea where the swell is not too bad, and the ship is quite stable. Felicity holds a lecture on whaling in the southern parts of the world and we learn how humans have hunted whales to the brink, as the title suggests.

During the daily recap hopes arise and plans are made for the next day as the storm is supposed to be over by

tomorrow! Pippa plans to make up for this difficult day and take us off the ship well before breakfast.

With these plans, not many of us are seen in the lounge late this evening.

Day 9 – Thursday 12 January 2023, St. Andrews & Grytviken

12h00 GPS Position: 54°26,2'S / 036°09,5'W

Wind: NE-6 • Sea: Calm • Weather: Partly Cloudy • Air temperature: 11° C • Sea temp: 5,9°C



What an early wakeup call am from our expedition leader Pippa at 3:45, but it was worth it. We arrived at St. Andrews Bay, where we have the biggest King Penguin colony in South Georgia.

We are going out before breakfast, half the ship for a Zodiac cruising and the other half for a landing. What a beautiful start to the day. We are sitting in our zodiac and approaching the beach, we are already seeing the big colony, the fur

seals and we can hear the elephant seals. We are swinging our legs gently out of the Zodiac in the water and up to put our lifejackets in the orange bag. The first thing to look at is some young elephant seals fighting each other and making a lot of noises.

We are walking through a big open part of land with a lot of fur seals trying to protect their territory. We are following the red poles till the end and there we are having a lovely view towards the glacier and the melting King Penguins around the little lake from the melting glacier.

At the same time, we are cruising along the beach and are looking at the big King Penguin colony. It is overwhelming to see so many penguins in one place, seeing them going in the water and coming out.



We are going back to the ship around 7 o'clock and having breakfast before we are swopping from landing to cruising and the other way around.

What a wonderful and unique experience at St. Andrews Bay. The ship is cruising towards Grytviken the big old whaling station and the grave from the great explorer Sir Ernest Shackleton.



Arriving in Grytviken is amazing compared to all the other landings we are seeing a lot of buildings. The blue group is going to the cemetery first and the red group to the museum. It is a great museum to visit which tells a lot of different stories about whaling and Shackleton's James Cairds which he and his crew was sailing to South Georgia.

Lothar is standing next to the grave and is giving a wonderful toast to our dear explorer Shackleton.

In the church we are ringing the bell and enjoying the atmosphere there. After we are joining a tour through Grytviken and listening to the history of the old days.

After a wonderful day in Grytviken, we are driving back in our Zodiac towards Hondius and when we are approaching the ship we are having a good smell in our nose the smell of BBQ. What a delicious and outstanding finish of the day having BBQ with a view to Grytviken and enjoying BBQ.



Day 10 – Friday 13 January 2023, Gold Harbour & Cooper Bay

08h00 GPS Position: 54°37.5'S / 035°56.3'W

Wind: SSE2 • Sea: Calm • Weather: Partly Cloudy • Air temp: 6°C Sea temp: 6.4°C



Today we look out the window and see the beautiful Gold Harbour. The glacier is tumbling down the mountain, the ice is oozing down the sharp, steep slope as if it has frozen in time. Our eyes cast upon the beach and see thousands upon thousands of orange and black heads, what can it be? King Penguins, 250,000 of them all clumped together on one very small beach, we can't wait to get ashore to witness this

magnificent site.

After a very filling and tasty breakfast, the first group embark the zodiacs and go ashore, the second group head off on a zodiac cruise. The first thing our guides spot is a Leopard Seal eating a King Penguin, wow this really feels like David Attenborough!



It is slightly drizzling, which only adds to the atmospheric intensity of this landscape. The clouds scrape over the hills and the waterfall next to the glacier roars like a lion in the Serengeti. The swell continually crashes onshore, the sound of the Penguins and Elephant Seals echoed along the beach, we all watch in awe at this great spectacle. On land, it is the most beautiful thing we have ever seen, so many animals sharing this space and yet cooperating

so well. There are no words to be said, we are speechless and feel so privileged to be here. The sun decides to shine its ray upon us, we can feel the warmth beating down on us and warming our hearts. Feeling very satisfied we head back to the ship for lunch and prepare for an afternoon at Coopers Bay.

Coopers Bay is 2 hours away, so we take the opportunity to have a wee nap. The afternoon is a full ships zodiac to visit a colony of 10,000 Macaroni Penguins. We haven't seen them yet, so we are all very eager to see this rockstar Penguin! We spend the next 2 hours exploring the many coves and bays. We spot Chinstrap Penguins with chicks; the cute fluffy ones patiently sit waiting for their feed of krill. A Leopard Seal gives us quite a fright by swimming under the zodiac! Our guide slowly drives us into a cove with towering rocks above us, the turquoise water slowly laps at the zodiac and the kelp moves elegantly with the swell, it's arms at mercy of the sea. It was time to

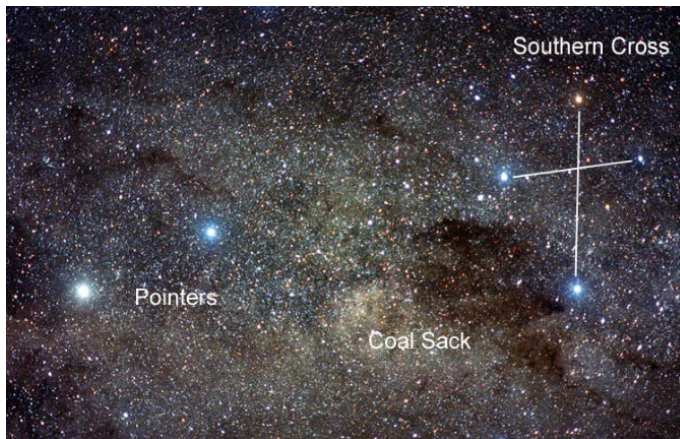
head back to the ship for a recap with Pippa and the team, followed by dinner, what a fantastic day.

Day 11 – Saturday 14 January 2023, At Sea

08h00 GPS Position: 56°43.9'S / 38°22.7'W

Wind: NW 4 • Sea: Slight • Weather: Overcast & Fog • Air temp: 3° C • Sea temp:

After a very busy, packed last day in South Georgia, it was a quiet morning on board Hondius today. After some very early starts, many were happy to know that there was no wakeup call this morning. We were all treated to a lie in until 0800, when Michael announced that breakfast was ready and waiting! Considering the forecast Pippa mentioned at last night's recap, today was surprisingly calm, with a steady 20-25kn wind and a smooth 1-2 meter swell. However, there was low visibility, with a thick sea fog surrounding us, reducing our visibility to just over 1nm at times.



The first activity of the morning was a lecture by Lothar, 'Wonders of the Southern Sky'. He showed images of constellations, open clusters, globular clusters, nebulae, and galaxies only visible on the southern hemisphere where we look into the direction of the centre of our galaxy. Including the nearby star Alpha Centauri and the Southern Cross with the dark dust cloud "Coal Sack". Some of the presented

objects are visible with the naked eye, others with binoculars or larger telescopes.

After yet another delicious lunch provided by the wonderful crew, the expedition team set up a film in the lounge, with the extra bonus of fresh popcorn! The documentary was all about Shackleton's famous expedition to the Antarctic, the Imperial Trans-Atlantic Expedition of 1914-1917.

During the documentary, the fog began to lift and so after it finished, many of us went up to the bridge and the outside decks to look out for seabirds, whales and ice! And soon, on the edge of the fog, we spotted the first icebergs, just about visible through the fog! Shortly



after, we saw our first tabular iceberg of the trip, 4nm off our port side! A beautiful chunk of ice, roughly 1.5 km in length and approximately 40 meters high! Of course, with more eyes on the water, we began to spot more ice on the horizon, all shapes and sizes, but none quite as impressive as our first tabular block. The seabirds were also making an appearance, mainly shearwaters, prions and a handful of black-browed albatross.

Next on the agenda was the most appropriate lecture of all, the journey of iceberg A-76A, presented by Carina. During her lecture, she described the ice-shelves around the Antarctic Peninsula, how they form icebergs and how they are transported around the Southern Ocean. Carina focused on A-76A, the famous iceberg that broke free from the Larsen iceshelf in November 2020 and slowly drifted towards South Georgia, but luckily changed courses and is now drifting in the Drake Passage.

Finally, it was time for our daily recap which hosted by several of the expedition team, talking about the King Penguin cycle, Tussac Grass and a short video of our landing at St Andrews Bay.

Day 12 – Sunday 15 January 2023, South Orkney Islands

12h00 GPS Position: 60°47,8'S / 044°34,5'W

Wind: NW-7 • Sea: Slight • Weather: Overcast/Rain • Air temp: 2°C • Sea temp: 3,3°C



Today we woke up to the wonderful sight of massive tabular icebergs. They made the ship seem small in comparison as we sailed passed on our way to the South Orkneys. Michael called us down for a delicious breakfast at 8am and we enjoyed the ice floating by as we tucked in. The day would start with the mandatory activities for Antarctica. First, we started with our mandatory briefings which taught us what we can and can't do in Antarctica. After the briefing it was

time for us to perform our biosecurity cleaning once more. We are all experts by now after the Falklands and South Georgia.

By 11:30 we had all completed our biosecurity and were treated to our first views of the South Orkney Islands. Our goal was to visit Scotia Bay on Laurie Island, which is the site of Orcadas Station, an Argentinean research base. The weather forecast wasn't promising but we sailed into the bay and the expedition team decided that it was worth a try. The zodiacs were lowered and those willing to face the wind a rain loaded up and headed for the coast. On the coast we could see many chinstrap penguins and Antarctic Fur seals. We also had the opportunity to view the glacier terminating at the water's edge. As we rounded the bay we were able to observe the Orcadas base sitting in the saddle between the glacier and the mountain. Bright orange

in a sea of grey we enjoyed considering what life must be like for its occupants. As we continued our cruise the weather suddenly took a turn for the worse gusting up to 50 knots. We headed for home with our zodiac drivers doing their best but unsuccessfully managing to keep us dry. We arrived at the ship wet but exhilarated. We dried off quickly and went up to the lounge in time for a lecture by Chloe on plankton. Then it was time for recap and finally a well-earned dinner.

Day 13 – Monday 16 January 2023,

12h00 GPS Position: 62°16,3'S / 050°15,6'W

Wind: NW-4 • Sea: Slight • Weather: Fog/Snow • Air temp: -1°C • Sea temp: 2.9°C



Monday Jan 16th, the sea day after the visit to the South Orkney Islands, started with a gentle wakeup call by our receptionist Karolina at 8:00. After quite some waves during the night, the sea was moderate.

At 10:00 Lotti introduced the white continent Antarctica and how the early seafarers discovered it. She described the topography, glaciers and ice shields, the ecosystem and also the science stations and the political status based on the Antarctic Treaty.

After “Burger time” at Lunch, several Humpback Wales passed by the ship. And more and more icebergs appeared on the sunny day. At 14:00 Simon was examining the different types of ice that can be found on, and around, Antarctica. This included the ice from glaciers and how it gets compressed, the different types of glaciers, ice shields, and sea ice. 98% of the surface if Antarctica is covered by ice, only 2% is ice free.

The lecture was followed by the Filming & Editing Workshop at 16:00. Using the video sequences Dorette filmed during the first part of the trip, she showed how easy you can produce videos using simple equipment like mobile phones. The presentation was followed by interactive editing tips in the Lecture Room.



After the Happy Hour in the Bar at 17:30, we started the South Georgia Heritage Trust Auction. Many guests and the Expedition Staff dressed up in fine gowns for an

afternoon of fundraising in the Lounge. Several unique items have been available to the highest bidder. This included a special bottle of Whisky and the accessories for it, little penguins, but also the permission to make the last wakeup call, get the Oceanwide flag signed by the Expedition Team, a dinner with the Chief Engineer, and much more. Altogether GBP 2.700, - came together which are all donated to the SGHT for their conservation work in South Georgia.

The day ended with a beautiful sunset and relatively calm sea.

Day 14 – Tuesday 17 January 2023, Paulet Island & Brown Bluff

12h00 GPS Position: 63°35,7'S / 055°54,1'W

Wind: W-6 • Sea: Calm • Weather: Sunny • Air temp: 8°C • Sea temp: 7.5°C

The long wait was now over! This morning, we were greeted with the crisp white, stunning landscapes of Antarctic. Everywhere you turned, there was an iceberg, growler, towering snow-capped peak or even the blows from distant humpback whales.



The morning's landing was based at Paulet Island, in the Antarctic Sound. Paulet Island is a favourite landing/zodiac cruise spot for many of the expedition team, and with good reason! It is home to approximately 100,000 breeding pairs of Adelie Penguins, Blue-eyed Shags and several Weddell Seals. Historically, Paulet Island was used by shipwreck survivors

from the 1903 Swedish *Antarctic* Expedition, led by Otto Nordenskiöld. Their ship was crushed by the ice in the Weddell Sea and so 20 men reached Paulet Island, built a stone hut and a cairn on the highest point of the island to draw attention to the rescuers. They managed to survive almost a full year over the winter, living off penguins and eggs.

Our visit was slightly more pleasant as we slowly wandered around the bustling Adelie Penguins, along the beach towards the nesting Blue-eyed Shags. To everyone's surprise, at the end of the beach, there was a deceased, juvenile Emperor Penguin! It was extremely cool to see a new species, albeit deceased. With half of the guests onshore, the other half were zodiac cruising



around the island, some even circumnavigating the island. During the cruise, half of the zodiacs were lucky enough to spot a leucistic Adelie Penguin, a very rare sighting!



Once back on board *Hondius*, we began the 3-hour transit to Brown Bluff, our next destination on the other side of the Antarctic Sound. When we arrived, the water was like a mill pond, barely a breath of wind and minimal swell, perfect conditions for us! So, we dropped the zodiacs, and the shore team loaded the gear and went to find our landing spot. We also had the pleasure

of welcoming a few guests to join the team for scouting, as they won the bidding for this prize during our South Georgia Heritage Trust Auction.

Whilst we were scouting, the wind began picking up quite quickly and soon, it was blowing a steady 30kns. The swell on the beach began dumping waves too and soon the conditions were unfavourable. It was then decided it would be better use of our time to pick up the zodiacs and move on, we had a long transit round to the Gerlache Strait and with a purple weather monster looming, we were best getting a move on!

Whilst sailing, we were treated with amazing humpback whale encounters, several mother and calf pairs, with the calves throwing their tail around and doing pec slaps! Later this afternoon, Saskia presented her lecture on the 1903 Nordenskiöld expedition, which was shortly followed by recap and yet another, beautiful three-course dinner from the crew!

Day 15 – Wednesday 18 January 2023,

12h00 GPS Position: 64°23,0'S / 061°38,6'W

Wind: SW-3 • Sea: Calm • Weather: Overcast • Air temp: 7°C • Sea temp: 8°C



The gray and overcast morning greeted us with low clouds looming over the Charlotte Bay. That was supposed to be the place of our morning activity. The idea was to do a Zodiac cruise and navigate through quite narrow and very picturesque Graham passage.

Hondius dropped the anchor pretty far from the entrance of the passage because this part of Antarctic peninsula is being visited pretty rarely and as a result the sea floor there still stays uncharted. The swell was pretty big for Zodiacs, but there was nearly no wind, so the conditions were quite OK.

After we had breakfast, we dressed up and started embarking Zodiacs. The first surprise – and it was a good one – was waiting for us right next to the ship. A couple of Humpback whales was swimming around. We spent some time watching them and then continued our Zodiacs cruise navigating to the passage.

The passage itself was a very calm and well protected place so the swell did not bother us there at all and we could have a good chance to look around and photograph the crevassed walls of glaciers and icebergs drifting around. On the way back though we had to fight the waves again. Some of us also spotted a couple of whales. We don't know whether it was the same couple of whales as at the beginning of the Zodiac cruise or different ones.



During lunch Hondius navigated to the place called Foyn Harbour. There we had another Zodiac cruise. This time we also spotted several whales. Besides Foyn Harbour is known as the place with a shipwreck. The remains of Norwegian whaling ship Governoren can be seen and even circumnavigated at one of the coves of the harbor. At the same time, it is a good anchorage position, so we saw two sailboats moored to this shipwreck. Also, in the area we could see and visit with our Zodiacs the so called “Garden of Icebergs” – a place with many icebergs grounded. There we also saw several Weddell seals.



That was not the end! After dinner we had a third activity of the day. As we failed to land at Brown Bluff due to the weather conditions, the expedition team found us a good substitute for this – a place called Portal Point. Known as a place of the start of many Antarctic expeditions, Portal Point is a place not on an island, but on the Antarctic

continent. That was very interesting and meaningful for us to set our feet on the 7th continent.

We came back onboard pretty late, almost at 10 PM. Ahead of us there was a very short night, but none of us complained, because this was exactly what they called an expedition cruise! Keep going!

Day 16 – Thursday 19 January 2023,

12h00 GPS Position: 64°27,7'S / 062°54,1'W

Wind: NNW-5 • Sea: Slight • Weather: Overcast • Air temp: 2°C • Sea temp: 4.3°C

To get the most out of the last day we are getting up at 4:45 am. We are just arriving in front of Danco Island. We could almost smell the Gentoo Penguin colonies on Danco Island.

We are putting our swimsuits on to be prepared for the top event polar plunge. The weather is a little bit cold, and it is snowing/raining, but this is the mystery of Antarctica, to have all kinds of different weather.



We are landing in Danco Island and having a lovely Zodiac cruising around the island with some humpback whales. On the island we are hiking with our snowshoes for the first time up to the very top, about 130m above sea level, sadly it is foggy, and the view isn't the best but it is nice to walk a little bit before going back to cruise back to Ushuaia.

In the end of the landing, we are taking the swim in the sea and completing our polar plunge.

Back on the ship we are cruising along the last landscape from Antarctica into the open sea. In the afternoon the ship is moving a lot and the portholes on Deck 3 have to be closed. We are ending the day with eating popcorn and watching the documentary of David Attenborough.

An early dinner with amazing food is leading us to our deserved rest.

Day 17 – Sunday 20 January 2023,

12h00 GPS Position: 60°10,2'S / 063°09,2'W

Wind: W-6 • Sea: Moderate • Weather: Partially Cloudy • Air temp: 2°C • Sea temp: 5.4°C



Today we wake up to the slight rocking and rolling of Hondius, the weather had calmed significantly in the night, so we all managed a very good night's sleep. We dreamt of giant-sized penguins leaping over the pectoral fins of Humpback Whales and the dancing light of the Antarctic sun shining upon us, the warmth slowly waking us up with Pippa's soothing voice entering our ear lobes. We start the

day with bacon and coffee, a commodity we can get used to. Julia gives us a fascinating talk on Antarctic medical history, followed by Light Pollution in the afternoon at 1400.

It has been a very busy few days, we got to rest a lot and have a proper look through the photos from the last three weeks. What a fantastic trip it has been. As I look out the window, I see the occasional Albatross and Giant Petrel shearing across the water with its 2 metre wing tips barely scraping over the water. At 1600 we listen to Michael talk about Hurley the photographer and at 1800 we hear the recap from the expedition. Dinner is particularly delicious, the camembert crème brulee, wow can we please have the recipe?

Day 18 – Sunday 21 January 2023,

12h00 GPS Position: 56°22,0' S, 063°17,4.'W

Wind: NNE-5 • Sea: Slight • Weather: Fog • Air temp: 6,5°C • Sea temp: 8,5°C



We have, after many wonderful expedition days, left Antarctica. One would expect spirits to be low, the longing for the Frozen Continent settling in to stay. Only one more day, only one more hour. However, it's nice to be returning home too. The guests recover from the fatigue of expeditioning, lounging in the turning chairs, listening to one lecture after another. In the morning, Sasha gave a talk on how he got to the Antarctic continent

and the adventures he's had on his journey. Then, next up, Charlotte gave an insight into the astounding race to the South Pole between Amundsen and Scott, a tale of bravery, of hardship, of heroism and tragedy. It's a slow day today, with people editing photos, remembering what has been seen or done, and letting the day pass by.

After gorging ourselves on the vast quantities prepared by our galley team, in the afternoon, many chose to indulge in a well-deserved rest, and those who didn't, joined Lothar for a sextant workshop, where they were shown how the seamen of past times were able to use the sun to determine their position and navigate the vast seas. In the afternoon, the ship is followed once again by Black-browed and Wandering Albatross, as well as other seabirds. The shaking of the Drake decreases as time goes by, and Felicity is giving her lecture on the threats facing the marine life of today, especially surrounding krill and other plankton.

As the last event of tonight, people dressed in their fancy clothes and headed to captain's cocktail, where they were served drinks, small bites and gave their farewell to the staff and crew. Mikhail put together a slideshow that was presented, and people headed off to dinner.

The journey is at an end, the beagle channel is almost upon us.

As always, I finish with a limerick:

The waves of the Drake,
Took many in its wake,
But the Hondius still sails,
And our humour prevails,
And our way back home we make.



Day 19 – Sunday 22 January 2023,

08h00 GPS Position: At Port Ushuaia

Wind: N-1 • Sea: At Port • Weather: Sunny • Air temp: 7°C • Sea temp: 11°C

One last wake-up all from Pippa. Our bags are packed when we head down for breakfast one last time and we are getting ready to disembark our dear Hondius that has taken us to one of the most beautiful places on earth. The last 19 days have taken us on a remarkable journey to the Falkland Islands, South Georgia and the South Orkney Islands, to the Antarctic Peninsula and ultimately over the notorious Drake Passage. It has given us a glimpse of life in these remote and sometimes inhospitable places. We have encountered amazing wildlife, made new friends, learnt and experienced so much together. We will all take away different memories of our cruise, but those memories will stay with us for the rest of our lives. **This was our expedition.**

Total distance sailed on our voyage: 3503,5 Nautical Miles

Furthest point south: 19/01/2023 Danco Island

64°43,8'S / 062°35,8'W

Your Expedition Team



Dive Log MV Hondius (HDS26-23)

Oceanwide Expeditions – Antarctica 2023

Dive Team Leader: Michael Green

Dive Guides: Will Gilbertson & Pete Shaw

Divers: Mary, Randall, Ina, Corinna, Johannes, Leif, Harald, Helge, Ortwin, Marion, Bernd, Herbert, Daniel, Angelica, Achatz, David, Domingo

Dive 1: Carcass Island – East Falkland

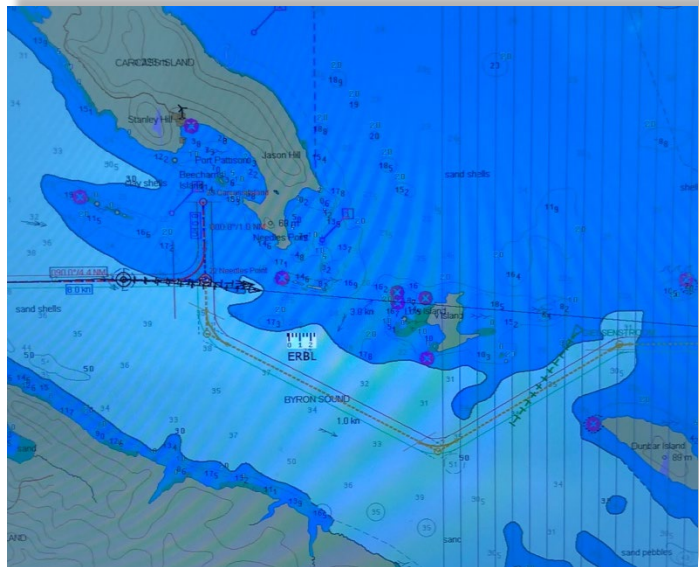
Friday 6 January 2023

**Dive Location: 51°18'35" S
60°31'2" W**

Max Depth: 15m

Max Dive Time: 58 minutes

Carcass Island is located amongst the group of small islands on the north-west tip of West Falkland. We selected a gently sloping dive site, on the south-east point of the island, with a depth of 5m approximately 100m offshore, gently descending to about 17.5m further out; several kelp beds on either side.



Our first zodiac outing of the expedition; kitting up went smoothly and soon pairs of divers were rolling backwards from the boat's sponsons into the water. Whilst on the surface, we conducted weight checks, making any necessary adjustments before commencing a brief dive in the shallows, as requested by the dive team, to ensure that everything was OK. Returning to the surface, each buddy pair reported that they were happy with their equipment before sinking below the surface once more to see what awaited them on our first exploration of the Falkland Islands.



Dive parameters were 20m (plan for 18m) maximum depth and a surface-to-surface time of no more than 60 minutes. The dive team on the surface established their watchkeeping positions with zodiacs bracketing the divers' positions parallel to the shore and patrolling the waters in between, ensuring a quick and effective response to the divers when they surfaced.

Most dives lasted around 40 minutes with the last buddy pair surfacing a few minutes prior to the 60-minute planned maximum dive time; all divers well – a good start to our underwater adventures.

Reported underwater sightings included kelp, crabs and numerous small invertebrates.

Dive 2: Whistle Cove, Fortuna Bay – South Georgia

Wednesday 11 January 2023

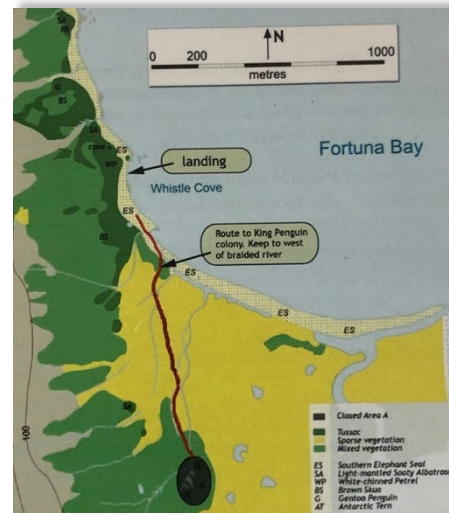
Dive Location: 54°8'49" S, 36°49'3" W

Max Depth: 14m

Max Dive Time: 50 minutes

Fortuna Bay runs, broadly, North – South and is located on the north-east coast of South Georgia. At the southern end is a huge colony of King penguins, and the shores are lined with king penguins, Elephant seals, Fur seals and Giant petrels drifting on the water.

The divers entered the water at around 0845 on the northern shore in around 5m with a plan of heading towards the shallows, turning left or right and seeing what they could spot. Our zodiacs drifted on the surface, bracketing the divers, following their bubbles and admiring the wildlife on the shoreline.



The first buddy pair surfaced after approximately 35 minutes and the last around 50. Once back into the zodiacs, we reported 'all divers out of the water' to the bridge of the ship and started to cruise along the shoreline watching and photographing the seals, seal pups and penguins as they went about their business undisturbed by our presence. Seals twist through the water around us as we drift along the

coast, curious but unafraid about the large black 'animal' floating on the surface of their waters.

At the end of the cruise, we dropped off those divers who wished to go ashore to walk to the King penguin colony about 1km from the beach.

Returning to the ship, we stow equipment, refill cylinders, have lunch and talk excitedly about what we have seen above and below the water.

Dive 3: King Edward Cove, Grytviken – South Georgia

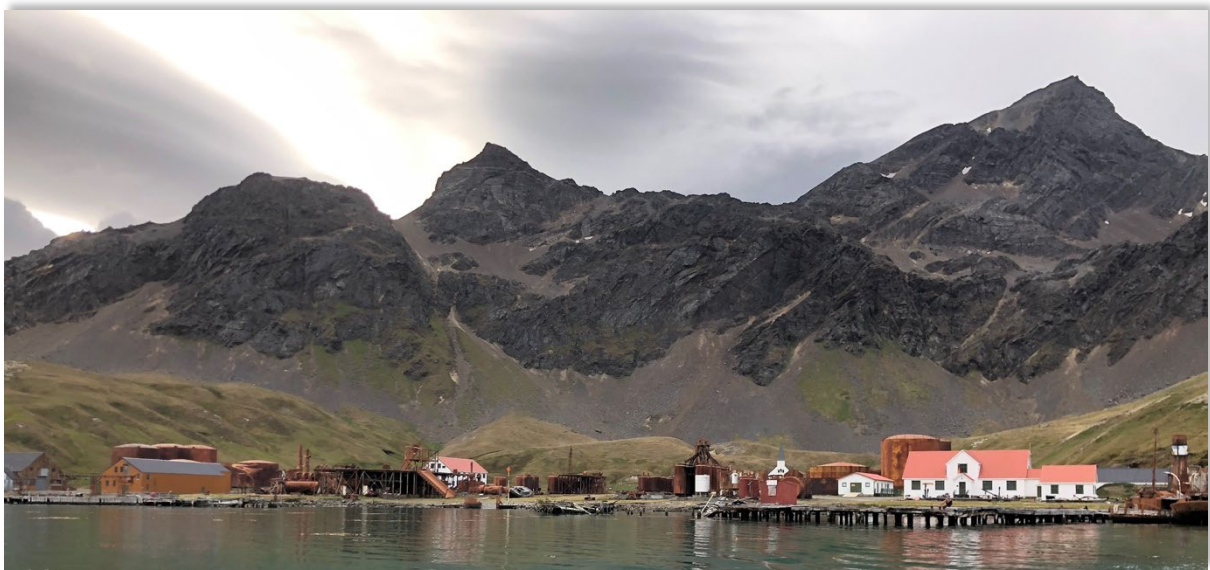
Thursday 12 January 2023

Dive Location: 54°17'1" S, 36°30'23" W

Max Depth: 14m

Max Dive Time: 60 minutes

King Edward Cove shelters within Cumberland East Bay, the town lying at the north-west end of the cove with the promontory of King Edward Point to the east. Around the cove, the steep mountain walls plummet to sea-level from their peaks that reach some 600m above us.



We cruised into the calm bay in our zodiacs and made for the remains of a wooden whaling ship beached on side of the bay close to the graveyard. Fur seals lay on the exposed timbers, warming themselves in the sun.

Each dive team entered the shallow water on the sternpost of the old ship. Visibility was about 2 – 2½ meters so, after a look around, the buddy pairs spread into the bay,



exploring the sea bottom and kelp beds. The seabed proved to be home to starfish, sea stars and assorted invertebrates. One keen-eyed team found a nudibranch hiding in the vegetation.

The divers surfaced after a good 45-60 minutes and once back into the zodiacs and de-kitted, we proceeded ashore to explore the old whaling station

before a visit to Shackleton's grave and the ritual toast to the great explorer with a tot of whisky brought ashore by the Hondius' hotel staff.



Unlike the whaling station on Deception Island, the one at Grytviken is better preserved and reflects the industrial scale of the industry with relatively modern machinery a silent echo of times past. Fur seals have reclaimed the land and populate the entire area, the small pups with their adorable brown eyes watching us pass through the land that is their home once more. It is hard to walk

in such a place without reflecting on what has gone before and welcoming the fact that that chapter of our history is closed.

Returning to the ship we are greeted by a BBQ and music on the deck, a lovely end to a perfect day of adventure in this stunning landscape that we are privileged to explore.



Dive 4: Gold Harbour – South Georgia

Friday 13 January 2023

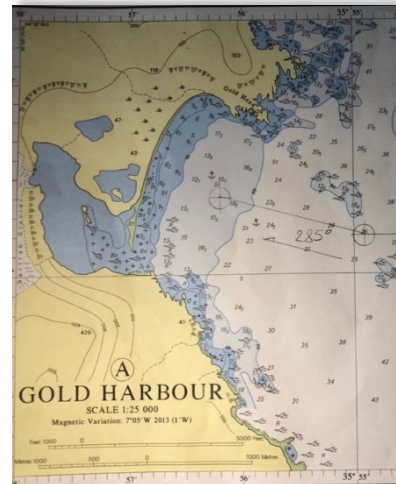
Dive Location: 54°36'44" S, 35°55'45" W

Max Depth: 16m

Max Dive Time: 45 minutes

We arrive at Gold Harbour before breakfast and drop anchor a short distance offshore. A high waterfall tumbles down the cliff-face to the beach at the western side of the bay and in the middle a glacier provides its own version with a sheet of ice, appearing frozen in time, descending from the ice high above.

We decide to dive in the bay on the far side of Gold Head, the rocky headland to the north-east of the bay. The sea is flat with a gentle rolling swell; the surge and ebb of the waves over the rocks creating hollows and overfalls, the large kelp fronds moving in time with the water.



The divers enter the water just before 0900 and immediately there are playful seals circling the bubbles of their exhaled breath as they descend to start their exploration of the beautiful bay. Whilst they dive, the fur and elephant seals, penguins and seabirds watch us with unhurried curiosity. We wonder what they make of these visitors to their home.



After about 45 minutes, the dive buddies surface with tales of seals swimming around them, pausing nose-to-nose in the water as though they were inviting them to join in their play. Other wildlife encountered included fish, starfish and invertebrates of many types nestled within the kelp forests.

Once back into the zodiacs, we enjoy a cruise along this unblemished stretch of South Georgia coastline before returning to the ship, ready to answer the many questions from those curious to know what lies below the glassy surface that marks the boundary between their world and ours.



Dive 5: Cooper Bay – South Georgia

Friday 13 January 2023

Dive Location: 54°46'15" S, 35°48'3" W

Max Depth: 13m

Max Dive Time: 40 minutes



Two zodiacs of divers head off from the ship after lunch into Cooper Bay, home to Macaroni penguins amongst other wildlife. Our plan for our final dive in South Georgia is to move around the headland to the north-east of the bay and dive amongst the rocky outcrops that extend from the land like some miniature version of the Peloponnese area of mainland Greece.

The water is a beautiful shade of blue and visibility appears to be

around 3m as we cruise around the kelp beds that grow on a rocky ridge some 10m under us, pointing out into the open sea.

The water once again swirls fronds of seaweed around the rocky fingers that point south from the island. Depths range to approximately 17m in the area we brief for the dive however we suspect – and the divers agree – that the best diving will be around the rocks rather than venturing further out into the bay.

Entering the water at almost exactly 1600, the divers slip below the surface once more, we make our report to Hondius' bridge team



and maintain watch on the bubbles gently popping on the surface as the teams explore amongst the rocks and kelp beds.

The diver's surface after about 40 minutes of exploration with reports of starfish, isopods and limpets clinging to the rocks.

De-kitted, we cruise the shoreline and then return to Cooper Bay to watch the seals and Macaroni penguins gathered on the rocks and shoreline.

All too soon we have to return to the ship as soon we will depart, pushing further south towards the Antarctic Peninsula and the islands that surround it.

Dive 6: Scotia Bay – Laurie Island – South Orkney Islands

Sunday 15 January 2023

Dive Location: 60°45'22" S, 44°43'51" W

Max Depth: 11m

Max Dive Time: 40 minutes

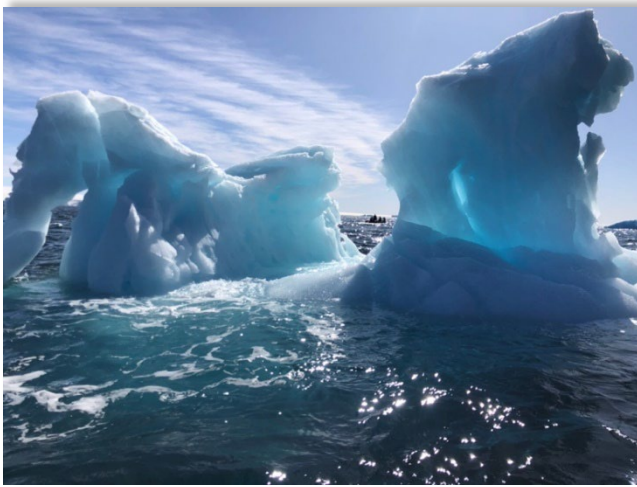
Scotia Bay lies on the Southern side of Laurie Island, the most easterly island of the South Orkneys islands. Two zodiacs with seven divers head off from the ship at approximately 1420. Our plan is to dive on the outcrop of rocks to the south-east of the bay which are surrounded by fur seals playing in the water whilst others look on from the rocks. Several Elephant seals lay lazily watching proceedings as the diver's kit up and prepare to enter the water.



The visibility is good, and we can see the divers' strobes firing as they capture images of the seals playing around them. Shortly afterwards however, the wind picks up to 50kts making station-keeping challenging against a lee shore. The surface of the water is being whipped into a stinging spray and waves splash over the sponsons as we continue to assess the divers' positions. Soon the two dive boats are

the only zodiacs left on the water – under the surface however, tranquillity reigns and the dive teams will soon all report having great dives.

After 40 minutes the divers start to surface. De-kitting and re-entering the zodiacs is challenging with everyone constantly being blown into the shallows and the rocks. Through teamwork and co-ordination everyone is back on board, and we return across the spume-covered sea to the safety of Hondius' shell doors.



Dive 7 Paulet Island – Antarctic Peninsula

Tuesday 17 January 2023

Dive Location: 63°34'11" S,
55°47'51" W

Max Depth: 10m

Max Dive Time: 25 minutes

Paulet
Island

sits on the eastern side of the Antarctic Peninsula in the Weddel Sea. We arrive early in the morning; a morning that is sunny and clear with flat seas. Overnight the air temperature has dropped, and we encounter our first flurries of snow.

We head out towards the shoreline, Paulet Island, with its high scree-lined peaks, a stark contrast to the blue and white of the water and ice that surround it.



Today we want to have our first dive on some ice so initially we cruise looking for a suitable location. Our ship recedes towards the far horizon, and we often catch glimpses of it in the distance between the icebergs. The water temperature has dropped to around 0°C adding an extra element of uniqueness to our adventures.

Having found some ice that appears stable, we kit up and enter the blue water. Visibility is around 10m and the light

through the ice is mesmerizing. Underwater we encounter the same current that

Shackleton was hoping to exploit to assist with his drift through the Weddell Sea to Paulet Island where he had left provisions two years earlier. For us though, it makes progress underwater challenging and eventually shortens our dive times a little. Back into the zodiacs we cruise amongst the ice, taking photos and marveling at the colors and shapes carved by the wind and the waves.

Dive 8 Foyen Harbour – Nansen Island – Antarctic Peninsula

Wednesday 18 January 2023

Dive Location: 62°32'25" S, 61°59'54" W

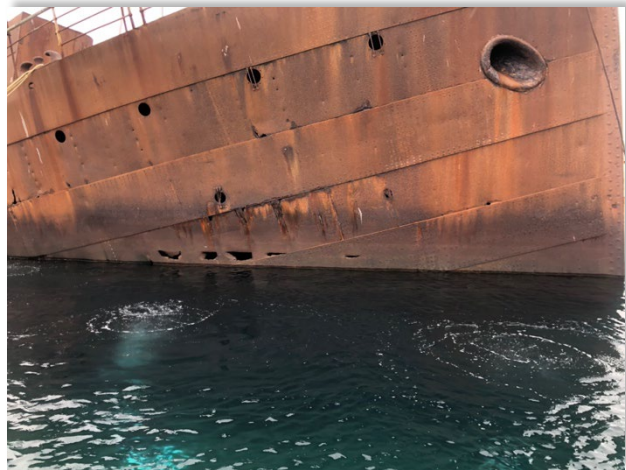
Max Depth: 20m

Max Dive Time: 60 minutes



Foyen Harbour lies in the NNE corner of Nansen Island, which itself lies within Wilhelmina Bay. The harbour was used by whalers as an anchorage for factory ships in the early 20th century. Our dive will be on one of the only accessible wrecks on the Antarctic Peninsula: The Guvernøren.

In 1915, the Norwegian Whaling Transport Vessel, the Guvernøren, caught fire after an oil lamp was knocked onto her deck and was beached by her Captain in order to save the lives of his crew – and his valuable cargo – and sits in approximately 20m of water at the stern with her bows above the water. The captain gambled that the Guvernøren's sister ship would pass by, as planned, some three weeks later and they would be able to signal them and be rescued.



The dive teams roll backwards into the water and circumnavigate the wreck, working initially along the starboard side towards the stern, much of which lies silent beneath the still waters, before returning to the bow via the port side of the ship.



Starfish, nudibranchs, and sea urchins wander the tangle of the wreck's spoil grounds. Whalebones litter the holds and the open decks, another reminder of our history in the region.

The water is crystal clear, the sea calm and the weather holds fair; everyone agrees that this dive is perhaps the perfect end to our underwater explorations on our expedition.

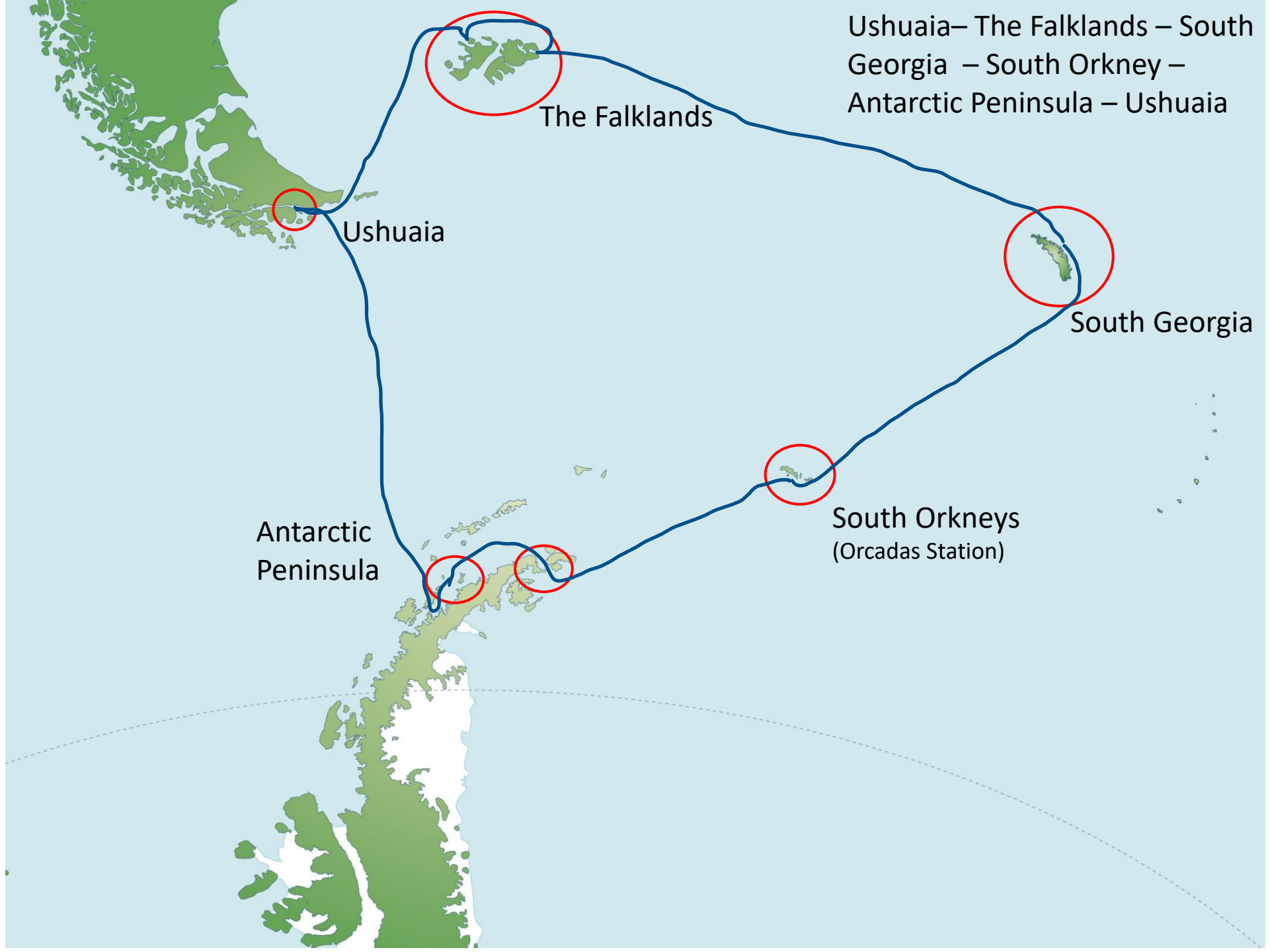
The Expedition Divers



Your Dive Team

Pete, William, Michael



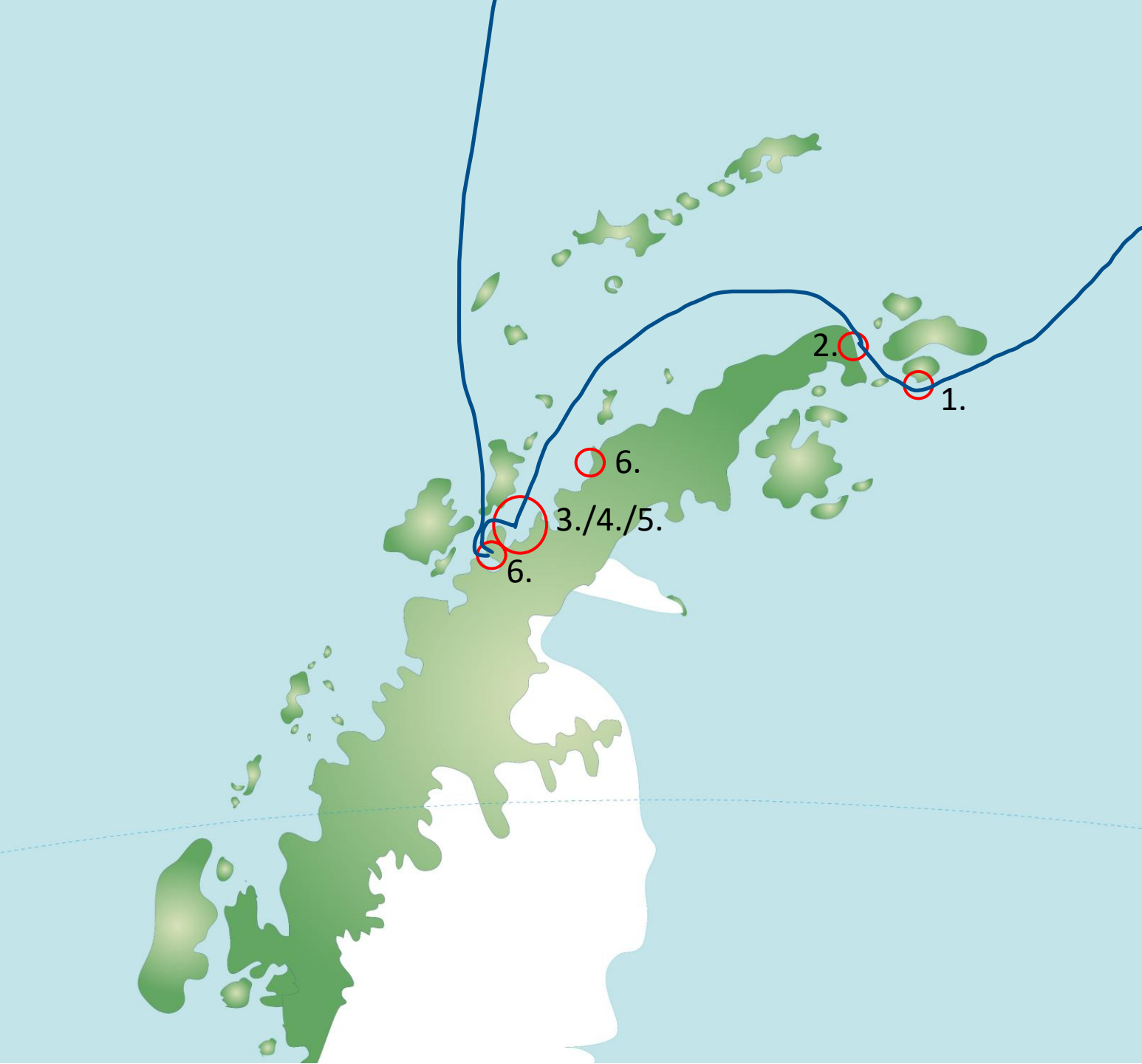


- 1. Carcass Island (6.01.)
- 2. Saunders Island (6.01)
- 3. Port Stanley (7.01.)



1. Rosita Bay (10.1.)
2. Salisbury Plain (10.1.)
3. Fortuna Bay (11.1.)
4. Godthul (11.1.)
5. St. Andrews Bay (12.1.)
6. Grytviken (12.1.)
7. Gold Harbour (13.1.)
8. Cooper Bay (13.1.)





1. Paulet Island
2. Brown Bluff
3. Graham Passage
4. Wilhelmin Bay / Foyen Harbour
5. Portal Point
6. Danco Island

Birds and Marine Mammals of the Antarctic region including Falkland Islands and South Georgia 4th - 22nd January 2023

English	Latin	4-jan	5-jan	6-jan	7-jan	8-jan	9-jan	10-jan	11-jan	12-jan	13-jan	14-jan	15-jan	16-jan	17-jan	18-jan	19-jan	20-jan	21-jan	22-jan
Upland Goose	<i>Chloephaga picta</i>			x	x															
Kelp Goose	<i>Chloephaga hybrida</i>			x	x															
Ruddy-headed Goose	<i>Chloephaga rubidiceps</i>			x																
Flying Steamer Duck	<i>Tachyeres patachonicus</i>			x	x															
Falkland Flightless Steamer Duck	<i>Tachyeres brachypterus</i>			x	x															
Crested Duck	<i>Lophonetta specularioides</i>			x																
Chiloe Wigeon	<i>Anas sibilatrix</i>																			
Speckled Teal	<i>Anas flavirostris</i>							x												
Silver Teal	<i>Spatula versicolor</i>																			
Yellow-billed Pintail	<i>Anas georgica</i>																			
South Georgia Pintail	<i>Anas georgica georgica</i>							x	x	x	x									
Great Grebe	<i>Podiceps major</i>																			
White-tufted Grebe	<i>Rollandia rolland</i>																			
Emperor Penguin	<i>Aptenodytes forsteri</i>																			
King Penguin	<i>Aptenodytes patagonicus</i>			x				x	x	x	x									
Adélie Penguin	<i>Pygoscelis adeliae</i>														x					
Gentoo Penguin	<i>Pygoscelis papua papua</i>			x	x			x		x	x						x			
Chinstrap Penguin	<i>Pygoscelis antarctica</i>									x	x		x		x	x				
Macaroni Penguin	<i>Eudyptes chrysolophus</i>										x									
Rockhopper Penguin	<i>Eudyptes chrysocome</i>			x																
Magellanic Penguin	<i>Spheniscus magellanicus</i>			x	x															
Wandering Albatross	<i>Diomedea exulans</i>				x	x	x	x	x					x					x	
Northern Royal Albatross	<i>Diomedea sanfordi</i>																			
Southern Royal Albatross	<i>Diomedea epomophora</i>			x																
Black-browed Albatross	<i>Diomedea melanophris</i>	x	x	x	x							x	x					x	x	
Grey-headed Albatross	<i>Diomedea chrysostoma</i>					x	x					x						x	x	
Light-Mantled Sooty Albatross	<i>Phoebastria palpebrata</i>							x		x	x									
Northern Giant-Petrel	<i>Macronectes halli</i>	x	x		x	x	x	x	x	x	x				x				x	
Southern Giant-Petrel	<i>Macronectes giganteus</i>		x	x	x	x	x	x	x	x	x				x				x	
Southern Fulmar	<i>Fulmarus glacialisoides</i>													x	x		x			
Cape Petrel (Pintado)	<i>Daption capensis</i>							x	x	x	x		x	x	x					
Antarctic Petrel	<i>Thalassoica antarctica</i>		x																	
Snow Petrel	<i>Pagodroma nivea</i>										x				x					
White-headed Petrel	<i>Pterodroma lessonii</i>																			
Blue Petrel	<i>Halobaena caerulea</i>				x	x	x	x										x		
White-chinned Petrel	<i>Procellaria aequinoctialis</i>		x		x	x	x	x	x	x	x	x	x	x	x			x		
Soft-Plumaged Petrel	<i>Pterodroma mollis</i>																			
Great-winged Petrel	<i>Pterodroma macroptera</i>																			
Atlantic Petrel	<i>Pterodroma incerta</i>																			
Sooty Shearwater	<i>Puffinus griseus</i>		x		x															x
Subantarctic Little Shearwater					x	x														
Great Shearwater	<i>Puffinus gravis</i>		x		x	x	x		x	x	x									
Antarctic Prion	<i>Pachyptila desolata</i>								x	x	x	x		x						
Fairy Prion	<i>Pachyptila turtur</i>		x	x		x														
Slender-billed Prion	<i>Pachyptila belcheri</i>		x	x	x															
Wilson's Storm-Petrel	<i>Oceanites oceanicus</i>	x	x				x	x	x	x	x			x	x	x	x			
Fuegian Storm Petrel	<i>Oceanites oceanicus chilensis</i>																			
Black-bellied Storm-Petrel	<i>Fregetta tropica</i>				x	x	x				x			x						

Pippa Low – Expedition Leader



Pippa has worked as a marine guide and skipper for 10 years, primarily in Scotland, Australia, New Zealand and the polar regions. A marine scientist specialising in marine mammal research and conservation, she splits her time between the hemispheres, and loves showing the public the marine world and all it has to offer.

Growing up on the coast of the incredible Moray Firth sparked a love for the marine world and its inhabitants. Spending every spare minute in, on or under the water; professional life reflected this love from a young age,

becoming an instructor in various marine disciplines and going on to study Marine biology at university in Scotland, then later, Australia.

Upon completion of her degree, Pippa has worked as a marine mammal observer, scientific diver and research assistant on various research projects; including photo ID, migration, distribution and behavioural studies on a range of marine mammals. She has developed a keen interest in marine mammal conservation through outreach and research.

After working in the Ross Sea region of Antarctica as a research assistant, she fell in love with Antarctica. Pippa now works as a full-time guide and assistant expedition leader in both the Arctic and Antarctica. In-between seasons, she still finds time to work on research projects.

Szymon Niezabitowski – Assistant Expedition Leader



Szymon was born in Cracow, Poland. He studied Biology and Geography in Cracow where he received his graduate degree in “Faculty of Biology and Earth Sciences”. His final thesis was about Volcanic Soils on Iceland.

After he finished his studies, he joined Polish Academy of Sciences and worked for the Institute of Systematics and Evolution of Animals, where he was a keeper and researcher of exotic animals, worked with Cotton-top Tamarin, Tarantulas and Pythons.

From the earliest years of his life, he is a passionate naturalist with a special interest in the geography and the wildlife of the higher latitudes especially in marine mammals.

Szymon began guiding in the Arctic in 2016 on Spitsbergen where he fulfilled his dream to see his first Polar Bear and since then he is fulltime guide working in the High Arctic, Antarctica and North Norway where he is guiding snorkelling whale trips with Orca.

Chloé Maréchal – Assistant Expedition Leader



Chloé is a passionate diver fascinated by marine life and exploration. She earned a European master degree in Marine biodiversity and conservation and loves to share her expertise for the marine environment. In April 2013, she was selected as the 2013-14 European Rolex our world underwater scholar. She spent a year working side by side with current leaders in underwater fields, getting very different experiences in marine science and in the diving industry. Diving and science are not her only passion; she enjoys exploring new countries and discovering new cultures. She has been diving on all continents

and living in more than 20 countries.

Chloe now lives in northern Norway just above the polar circle. When she is not onboard, she can be found underwater: observing the ocean's inhabitants, searching for forgotten wrecks or mapping and exploring undiscovered underwater cave passages.

Pete Shaw – Dive Guide



Pete is a full-time professional dive instructor and dive centre manager working in the South West of England.

Always a water-sports enthusiast, he started diving some 20 years ago and, as with his other hobbies of swimming and windsurfing, rapidly transitioned into teaching.

When he's not in the water with students, Pete enjoys exploring new dive locations and strives to continually enhance his knowledge by diving with a broad range of individuals from different backgrounds and agencies.

Pete says that introducing people to the underwater world, ensuring that they put safety first, fun a very close second and enabling them to develop their skills is a privilege that should be treasured.

Pete has logged over 6,000 dives around the world, with the majority of these being in the cooler waters of Northern Europe. He is a PADI Master Instructor, IANTD Technical Instructor and a BSAC Instructor. Pete is also an Emergency First Response Instructor-trainer and holds recreational and technical diving qualifications with PADI, IANTD, TDI and BSAC.

Throughout his career, Pete has been taught by, dived with and learned from, many of the top Instructors and Instructor Trainers from the world's leading diving agencies; one of the many up-sides he acknowledges of working within the upper levels of the UK diving industry.

For Pete, the involvement with, and enjoyment of the raw beauty of our natural environment goes hand in hand with the conservation and protection of the landscape we love, above and below the surface of our oceans.

Will Gilbertson - Dive Guide



Will has always been driven towards exploring the outdoors and there was plenty of scope for this growing up in Scotland, with miles of beautiful coastline and mountain scenery. The underwater world particularly fascinated him, and he started diving in 2005 on moving to Aberdeen to study Zoology and Marine Biology at University.

Since then he has dived extensively around the coast of Scotland, introduced new divers to the underwater playground and used small boats to access the many wreck and scenic dives around the rugged

Scottish coasts. After finding these waters not quite cold enough, Will enjoyed travelling to Iceland to dive the hydrothermal chimneys and glacial lakes before joining Oceanwide in 2015 as a dive guide in Antarctica, and the Arctic the following year.

Will still lives in Aberdeen; after graduating from University he spent 2 years there researching the effects of invertebrates and microbes in marine sediments for a Masters of Philosophy degree. He also spent some time training offshore personnel in marine search operations, sea survival and helicopter underwater escape and as a microbiologist at a large craft brewery.

For now, he is turning to guiding full time, both on the water and on land, in order to spend more time introducing people to the fantastic landscapes and wildlife of the polar regions and at home in Scotland.

Michael Green - Dive Team Leader



He began diving in 1980 learning with the Royal Navy in Portsmouth Harbour. Leaving the Navy, he continued to dive mainly around the U.K. dive into the wrecks always looking for a new story to learn.

He is qualified as an instructor with BSAC and PADI. Plus, certified to operate Drager Dolphin and Buddy Inspiration rebreather. He has worked for Oceanwide since coming aboard as a guest for the Last five years. He enjoys spending time giving our guests a safe but enjoyable experience in the Polar Regions.

His biggest tip for you is slow down.

Look around you, enjoy these beautiful flames they are amazing. He is looking forward to spending some time with you over the coming days. Please ask any questions you may have as soon as you have them, we are here to help!

Alexander Romanovskiy - Expedition Guide



Alexander Romanovskiy comes from Saint-Petersburg, the Northern capital of Russia. He was born in 1981. After having graduated from the boarding school Alexander entered Saint-Petersburg State University, where he spent 5 years studying physical geography, ecology, regional geography and international tourism. Afterwards he was working on his PhD thesis in Herzen State Pedagogical University of Russia, doing geoecological researches.

In the year of 2011 however, Alexander decided to pause his scientific career and start doing something completely different, which means working in tourism and traveling the world. He spent 2 seasons working as a trekking guide in Fann mountains (Tajikistan), 1 season on Novolazarevskaya Antarctic scientific station (Queen Maud Land, Antarctica) working as a member of a guesthouse crew.

Since February of 2012 most part of the year he spends on Svalbard. For five seasons in a row Alexander has been living and working as a guide in a ghost town of Pyramiden. In 2016 a new page in Alexander's guiding career was opened: he started working as a naturalist guide on cruise ships in polar regions of the world – Svalbard and Antarctica.

3 to 4 months a year Alexander dedicates to his main passion – traveling the world. No public transport, no hotels, only hitch-hiking and staying overnight with locals or sleeping in a tent. This way he has already visited almost all Soviet republics, Middle East (Iran, Turkey), Asia (China), South America (Argentina, Chile, Paraguay), and it is hopefully far not the end! The world is big, friendly and interesting to explore!

Dorette Kuipers - Expedition Guide



As a director Dorette produces documentaries and as commissioning editor she's responsible for many programs (mainly art programs as the Dutch Antique Roadshow) at the Dutch Public Broadcasting company AVROTROS. Dorette used to be a teacher in audio-visual skills while nowadays she's more focusing on using smartphones to make photos and to film.

Dorette loves to be on the water (liquid or frozen;). In Holland she has two small boats; one for the canals of Amsterdam, one to sail with. All her sports are water related (rowing, swimming, sailing, skating and skiing). She prefers to travel in 'cold area's' and has visited both the Arctic and the Antarctic.

Being again the photography guide on the Oceanwide fleet means for her the ideal combination of visiting her favorite landscape with supporting passengers in making visual stories of their 'once in a lifetime-trip'.

Mikhail Barabanov – Expedition Guide



Born in St Petersburg, Russia, but raised in Luxemburg, Mikhail now lives in Switzerland, where he delights in camping all over the local mountainscape.

He spent quite some time in the academic world, obtaining master's degrees in Marine Mammal Science and in Ecology and Nature Conservation. After working for several field seasons as a scientist in distant places on marine mammals and birds, he was keen to pursue a way to combine his passion for travelling, outreach and the higher latitudes.

His deep interest for the polar regions was formed on a visit to Antarctica with Oceanwide in 2018 as part of a university course. At the time, he was stunned by the pristineness and the vibrance of life found in the Southern Ocean and wanted to find a way to return in a professional capacity. As he prefers the world's colder regions, Oceanwide provided the opportunity to immerse himself in the polar world.

No stranger to adverse weather and difficult living conditions, Mikhail is always looking to find places and moments that exude true calm and serenity. As an avid photographer and videographer, he is always seen carrying his gear around from place to place, trying to improve his craft and capture wildlife in their natural behaviour.

Usually in high spirits, he works as a guide on a variety of expeditions, on which he can be found always ready to help and looking to increase his savoir-faire in all things ocean and wildlife.

Lothar Kurtze - Expedition Guide



Lothar Kurtze, born 1972 in Germany, has a PhD in mechanical engineering (TU Darmstadt) and works as consultant for acoustics in Germany and Austria.

He is interested in astronomy, has his own observatory and is the CEO of the non-profit FTP-Europlanet gUG focussing on astronomical education and outreach.

In 2005, he became elected as Fellow of the Royal Astronomical Society, London.

He is a key member of the astronomy group of the scientific museum 'Haus der Natu' in Salzburg, which has built the VEGA-Observatory in 2018.

Since 1993 he is also working as lecturer and travel guide, mainly for voyages with astronomical background. He has observed auroras in the arctic, total solar eclipses in Madagascar and Libya and led expeditions to the Galapagos Islands and Bhutan. With Oceanwide Expeditions, he has visited both, the Arctic and the Antarctic.

In 1999 the Minor Planets Committee of the International Astronomical Union named the asteroid (7688) Lothar in his honor.

Charlotte Taplin – Expedition Guide



Charlotte grew up by the Coast in Cornwall, United Kingdom. From a young age she has always been fascinated by wildlife and the ocean. She studied Wildlife Conservation at University and then spent the next 10 years travelling through South America, Australasia and Africa. Charlotte's love for boats began in 2013 where she worked on research and dive vessels visiting remote regions of the Great Barrier Reef. Her interest in Marine Biology grew in Australia and New Zealand while studying Humpback, Minke and Sperm Whales.

After driving overland in a land rover from South Africa to Jordan she then moved to Mozambique in 2018 where she started her own backpacker hostel. In her spare time Charlotte worked as a Researcher studying Whale sharks and Manta Rays along the Coast of Mozambique. During 2020-2022 she worked as a Deckhand/Divemaster on superyachts and ice breaker explorer vessels. Her hobbies include scuba-diving, surfing, free-diving and hiking. Being surrounded by the ocean is Charlotte's favourite place to be and she is so excited to have started her first season with Oceanwide in 2022.

Julia Wellner – Expedition guide



Julia grew up in northern Germany, roaming and exploring nature from her early childhood on and quickly developed quite a taste for travelling. After studying photography in the tiny village of Vevey on the shores of the Lake of Geneva in Switzerland, she has worked and lived in the USA and France. Once back to the calm grounds of Switzerland, she spent almost ten years organizing medical emergency evacuations and repatriations worldwide – a passionate work with one big problem: a lack of nature and real adventure!

Several winter months spent in Iceland made her remember that the Far North, the cold and barren landscapes are the place where she feels the most at home. An artist residency that was taking place on a sailboat in the high arctic brought Julia to Svalbard, better known to some by the name of Spitzbergen. Two weeks that changed her life: touched by the incredible nature, she decided to leave Switzerland and move north and take on a new professional path.

Since 2017 she is now working as a guide and expedition leader: in winter & spring as a snowmobile guide on Svalbard, summers as a guide and expedition leader on expedition cruises in Svalbard and Greenland and when the darkness settles in the northernmost settlement of the world, she travels south and joins the expedition cruises for a great part of the Antarctic season. She speaks German, French, English and some Norwegian.

Julia still continues her work as a photographer with commercial mandates and as an artist with her work being show in exhibitions.

Júlia Baldursdóttir – Expedition Guide



Born in Iceland into a family of nature loving, tree hugging explorers, Júlia developed a love for the arctic nature and for travelling at a very young age. Age 15 she moved to Berlin where she studied linguistics and later psychology.

Initially a side job in 2013, tour guiding quickly grew into a passion for Júlia and soon became a full time job, both on land and on sea. In 2016 she enrolled in a Tour Guiding Program at the University of Iceland and became a nationally certified Tour Guide. For almost a decade, she has travelled in arctic

regions, especially in Greenland and in Iceland.

It is probably no surprise that when she is not on a vessel, Júlia spends most of her free time exploring the world on her own. In spite of (or, perhaps, because of) the months spent in the colder region of the world every year, when travelling for pleasure, Júlia is particularly drawn to the sunny Caribbean, though of course her other big passion, salsa dancing, doubtlessly plays a large role in that as well.

Julia Angermeier - Expedition Guide



Julia was born Germany in a small village outside of Frankfurt.

She has always had a love of the outdoors. Camping, hiking, mountaineering, kayaking have been her favorite activities since her childhood.

She started her professional career as an Intensive Care Nurse in 1998 and finished her studies in 2003. She continues this profession today in her time off.

The majority of her time, however, is spent in Puerto Natales (Chile) where she works as a trekking and outdoor guide in Torres Del Paine Nationalpark and other regions in Patagonia some of the most remote and beautiful parts of the world.

In 2019 she started working as a camping- and expedition guide for Oceanwide Expeditions in Antarctica. From the first day on she fell in love with the beautiful and breathtaking nature of the deep south. Becoming a Polar guide was now her goal.

Julia's "Speciality" are still people...telling the known and unknown stories of the most interesting people in the history of exploration of the polar regions became her passion.

Another passion of her is connecting people with nature, and showing the beauty around them. Getting people away from their computers, social media and stress, and giving them a life changing experience.

Julia looks forward to sharing these amazing adventures with her guests on every trip.

Tiphanie May - Expedition Guide



Tiphanie is an 8th generation Falkland Islander living in Stanley. She was raised on a small group of islands called Speedwell Island Group, owned and worked by her parents as a sheep farm and family crab business.

Tiph was raised surrounded by Falkland's wildlife with her family island boasting rookeries of Magellanic penguins, Gentoo penguins as well as several other breeding birds. The islands also include haul outs of South American sealions and elephant seals. Surrounded by all this wildlife it was of no surprise that she found nature

fascinating. From the penguin couple that lived under her house to the wonderful variety of creatures found in the crab pots, marine life was a theme. This led to her to travel to the UK at 16 to study to be a marine biologist.

Tiph spent 6 years in the UK studying to get her BSc (HONS) Marine Biology and MSc in Marine Biology. Using her holidays to volunteer in the Falklands for various conservation projects to gain experience. Upon completing her studies, she joined the Government Fisheries Department, spending 200 days per year at sea monitoring seabird activity and collecting research material. The sea has been a big part of her life, from a young age she worked to haul crab pots with her father's boat. Later she went on to work for an experimental sustainable fish farm which allowed her to get her RYA qualifications in Power Boat. Tiph currently works full time operating a small boat in the Falklands.

Tiphanie started working in the tourist industry at the age of 23. Having grown up with no roads her whole life, 4X4 tour driving just made sense. Tiph has worked to provide a variety of tours such as hiking, 4X4 and penguin colony visits. In 2018, Tiphanie was offered the amazing opportunity to go to Antarctica and South Georgia with Oceanwide as guide. She fell in love with the scale of the landscape and has never looked back.

Felicity Johnson – Expedition Guide



Felicity is a marine biologist, commercial skipper and guide with a strong passion for marine mammal conservation. Working on the water for almost 10 years, she has gained a range of experience in marine mammal research, including cetacean entanglement studies, biopsy collection and analysis, and photo identification projects across the planet.

Most recently she has moved to live and work in Vancouver, Canada, where she is a captain and field researcher for Simon Fraser University. The project is investigating the strategic interactions

between Bigg's killer whales and their pinniped prey in the Salish Sea. Alongside this, she is an Education Coordinator for Ocean Youth Academy, a non-profit dedicated to connecting youth with the oceans, creating lessons all about the life underneath the surface and the changing climate.

Growing up in Scotland, Felicity discovered a love for the outdoors during childhood holidays to the coast and hills of Scotland. She began by teaching sailing during the school holidays and then went on to study marine biology at university.

During her Master's degree, Felicity gained certifications as a commercial skipper, marine mammal observer, advanced diver and a wilderness first aider. During this time, marine pollution grabbed Felicity's attention and has since believed it is her professional and personal responsibility to apply her knowledge and skills to contribute to ocean conservation by organising events, talks and clean ups to help spread awareness of the changing climate.

Saskia van der Meij – Expedition guide



Saskia is an adventurous girl born in the Netherlands. With a huge national park in her backyard, she felt on a young age how great it is to be active in nature. Getting up early, when the world is still asleep, that's when you hear nature at his best.

For more than 20 years she was a dedicated product manager for a nature-orientated tour-operator offering tailor-made self-drive holidays with stays in special accommodations. She's coming home to amazing destinations like Alaska, Canada, Iceland, Australia, New Zealand, Argentina, Chile and

Southern Africa.

In November 2019 she followed her heart and managed a lodge in Namibia for a few months. That was the start of her new career. Working as Head Service on a Tallship taking guests to beautiful places around the Baltic Sea, the interesting north of Norway looking for whales and northern lights and expeditions to mind-blowing Spitsbergen/ Svalbard. In the meantime, also complete various guide-training programs.

Being active outdoors makes her really happy. Multiple-day hikes in the Andes or Himalayas, canoeing around remote islands in Canada or camping on a mountain top overlooking glaciers in Alaska. Ask her and she's up for it. Her heart beats faster when nature 'talks' to her. What better way to share her passion and also finding a way to contribute to nature conversation at the same time!

Hospitality lies in her core and her ongoing 'sunshine' is what guests remember Saskia by. She loves motivating people and sharing her enthusiasm with others is what goes naturally. Colleagues describe her as an energetic Jack-of all-trades with eye for detail.

Carina Ketterer – Expedition Guide



This is Carina, she grew up in the swiss capital of Bern far away from the sea. Her studies in renewable energies and environmental engineering gave her a curiosity in energy production and civil engineering. She would like to share this curiosity with you! Carina is a sports nut and runs triathlons in her spare time. But don't worry, she has vowed to slow down the tours to half-tempo.

Carinas favorite animal since childhood, was the penguin. In 2019 she finally hopped on a boat to the Antarctic to see them in their natural habitat. That journey bore in her a new fascination with these cute animals and their

dominion.

Being the happiest outside, Carina chose to make the world her workplace and to become an international guide for Oceanwide Expeditions.

Carina is a passionate and optimistic person who always likes to learn new things and has a broad interest in geography, history, archaeology, the arts and the natural sciences. As the cheesy Instagramposts say: "The journey of a thousand miles begins with a single step". So step up and let Carina share her passion for civil engineering and penguins with you and take part in your once in a lifetime adventure!

Inna Kammerer – Ship's doctor



She was born in Kazakhstan – a big country with wide steps. When she was 17 years she relocated to Germany and studied medicine in Heidelberg.

In addition to her certification in cardiac surgery and emergency medicine, she is a consultant for an intensive care unit.

She gained a huge amount of outdoor knowledge and experience during two 300km journeys crossing the Baikal Sea in Winter, hiking in the Altay mountains and travelling through Mongolia.

Many travels involved working as a medical accompaniment in Asia, Arctic, and other special places in the world. She is now working as a Flying doctor for ambulance transport worldwide.

Her career goals are to continue to work with people everywhere and spend as much time as possible exploring the world.

This is Inna's sixth expedition together with Oceanwide Expeditions.

WELCOME ABOARD!

Luggage will be delivered to your cabin. Please make check to make sure you have received all your luggage. If you have any extra luggage in your cabin – please notify a crew member.

**** Tea and coffee are always available in the lounge on deck 5 ****

±1715 **Welcome & safety briefing** - Please join us in the **lounge** (deck 5, forward) for a welcome to the voyage, followed by a **mandatory** safety briefing and lifeboat drill.

Lifeboat Drill

All guests accommodated on Deck 3 (Cabins 301-337) will go to MUSTER STATION A which is the Restaurant on Deck 4

All guests accommodated on decks 4, 6, and 7 will go to MUSTER STATION B which is the Observation Lounge on Deck 5

±1800 **Departure from Ushuaia.**
The bridge will be closed during these operations.

1830 **Expedition Introduction & Captain's Welcome** – Please join us in the **lounge** (deck 5) for an introduction to the expedition, a welcome to your new home from the Hotel manager, the captain's toast and to meet your expedition team.

1930 **Buffet dinner** is served in the **dining room** (deck 4)

We will sail into open sea this evening and the ship may move – please secure your belongings and be careful when moving around the ship.

Take your seasickness medication before we head out into open sea- the doctor will be available in the lounge after dinner to assist.

- 0745 **Wake up call** - Good Morning!
- 0800 **Breakfast** is served in the **dining room** (deck 4).
- 0915 **Zodiac Briefing** - Please join us in the **lounge** (deck 5) for our **mandatory** zodiac operations and IAATO briefings.
- 1100 **Introduction to the Falkland Islands** – Please join Tiphannie in the **lounge** (deck 5) to learn more about the islands she calls home.
- 1200 **Boots** – We will call you by deck to collect your Muck boots from the zodiac boarding area on **deck 3**. *Please bring your thick socks for the perfect fit! **Please listen for announcements.***
- 1230 **Lunch** will be served in the **dining room** (deck 4).
- 1400 **Biosecurity** – We will call you by deck to **deck 3** to complete our first biosecurity cleaning – please bring all your outerwear, backpacks, muckboots and tripods/walking sticks to be cleaned and/or checked. ***Please listen for announcements.***
- 1600 **Penguins!** - Please join Carina in the **lounge** (deck 5) for her lecture exploring the penguins we are likely to encounter on our voyage.
- 1600 **Diving Briefing** – Divers please meet the dive team in the **lecture room** (deck 5) for your **mandatory** dive introduction and briefing.
- 1800 **Recap** – Please join the Expedition team in the **lounge** (deck 5) for our first daily recap and briefing.
- 1900 **Dinner** is served in the **dining room** (deck 4) – *Tonight’s dinner will be plated – please make your way to the dining room promptly.*

Please walk slowly on the ship, never rush. Keep one hand for yourself but at least one hand for the ship. Shut all doors firmly and keep fingers away from door frames.

0645 **Wakeup call** - Good Morning!

0700 **Breakfast** is served in the **dining room**.

This morning we hope to land at Carcass Island, offering a long walk (approx. 4km) from Dyke Bay to the Carcass Island settlement. Those not venturing on the long walk will enjoy the Magellanic and Gentoo penguins of Dyke Bay, and then be shuttled by zodiac to the settlement. In addition to wildlife, we will also enjoy a delicious selection of local cakes at the settlement.

If you would like to give a contribution for the delicious cakes, there is a tip box at the settlement.

+/- 0815 **Divers** please meet the dive team on the zodiac deck dressed and ready to go - *listen for announcements.*

+/- 0830 **Long walkers** - please come to the **zodiac boarding area** (deck 3) – *listen for announcements.*

+/- 0845 **Beach & Settlement only** - please come to the **zodiac boarding area** (deck 3) – *listen for announcements.*

1230 **Lunch** will be served in the **dining room**.

This afternoon we hope to land at Saunders Island; offering a walk up to visit Magellanic penguins, Southern Rockhoppers and Black-browed Albatross. Please follow the poles/flags and remember to keep a safe distance from wildlife.

+/- 1430 **Divers** please meet the dive team on the zodiac deck dressed and ready to go - *listen for announcements.*

+/- 1445 **Red group** please come to the **zodiac boarding area** (deck 3) – *listen for announcements.*

+/- 1500 **Blue group** please come to the **zodiac boarding area** (deck 3) – *listen for announcements.*

1845 **Recap** – Please join the Expedition team in the **lounge** for our daily recap and briefing.

1930 **Dinner** is served in the **dining room**.

- +/-0700 The Captain and his bridge team will navigate Hondius through a narrow passage to enter Port Stanley.
- 0715 **Wakeup call** - Good Morning!
- 0730 **Breakfast** is served in the **dining room**.

*This morning we hope to land at Port Stanley – the capital of the Falkland Islands. Opening times for the shops and museum as well as a map can be found at the reception – **you can wear your own shoes but please make sure they are clean of any dirt, seeds, etc- you might be asked to walk through disinfectant at the jetty.** You can walk freely through the town – but please respect the local traffic and peoples' homes. **Very last zodiac will leave the jetty at 1230pm.***

- +/-0830 **Blue group** - please come to the **zodiac boarding area** (deck 3)– *listen for announcements.*
- +/-0850 **Red group** - please come to the **zodiac boarding area** (deck 3) – *listen for announcements.*
- 1230 **Lunch** will be served in the **dining room**.

*This afternoon we will head back out to sea, making our way towards South Georgia. Please secure your belongings, take any seasick medication you require and always remember – **one hand for the ship!***

- 1400 **Micheal's Falklands adventure** – Please join Michael in the **lounge** (deck 5) for his lecture on the historical conflict that he witnessed.
- 1600 **Whales in the Southern Ocean** – Please join Felicity in the **lounge** (deck 5) for her lecture on the gentle giants we might encounter during this voyage.
- 1800 **Recap** – Please join the Expedition team in the **lounge** (deck 5) for our daily recap and briefing.
- 1900 **Dinner** is served in the **dining room**.

- 0745 **Wakeup call** - Good Morning!
- 0800 **Breakfast** is served in the **dining room**.
- 1000 **Bird migration** - Please join Mikhail in the **lounge** to learn more about why and how birds cover great distances from nesting to wintering grounds.
- 1100 **Bird Identification** – Want to find out what birds we are seeing today? – please join some of expedition team on **deck 7** for bird watching and identification.
- 1230 **Lunch** will be served in the **dining room**.
- 1400 **Orientation on the Southern Sky** - Please join Lothar in the **lounge** for his lecture. He will tell you all you need to know about the skies and constellations of the Southern hemisphere.
- 1600 **Polar Wife's** – Please join Saskia in the **lounge** to hear about untold side of polar exploration.
- 1815 **Recap** – Please join the Expedition team in the **lounge** for our daily recap and briefing.
- 1900 **Dinner** is served in the **dining room** – *Tonight's dinner will be plated – please make your way to the dining room promptly.*

Please walk slowly on the ship, never rush. Keep one hand for yourself and at least one hand for the ship. Shut all doors carefully and keep fingers away from door frames.

Time change: At 0000 the clocks will change forward. At 0000 it will be 0100.

- 0745 **Wakeup call** – Good Morning!
- 0800 **Breakfast** is served in the **dining room**.
- 0930 **South Georgia Briefing** – Please join us in the **Lounge** for a **mandatory briefing** and video (narrated by David Attenborough) for our visit to South Georgia.
- 1100 **Introduction to South Georgia** - Please join Tiphanie in the **lounge** for a lecture about the islands we are about to discover.
- 1230 **Lunch** will be served in the **dining room**.
- 1330 **We will call you by deck to deck 3** to complete our biosecurity cleaning – please bring all your outerwear, backpacks, muck boots and tripods/walking sticks to be checked and if needed – cleaned. *Please listen for announcements.*
Please try to clean your gear beforehand – paper clips to help clean can be found at reception - however we will provide the tools for further cleaning.
- +/-1500 **Shag Rocks** – Between 1500 and 1600 we will sail pass Shag Rocks. In this area the sea gets shallower which creates an upwelling of nutrient-rich water, resulting in a lot of food for birds and whales. We invite you to join the expedition team out on decks as it is an excellent area to spot wildlife. *Please listen for announcements.*
- 1800 **Recap** – Please join the Expedition team in the **lounge** for our daily recap and briefing.
- 1900 **Dinner** is served in the **dining room**

“The heart of man is very much like the sea, it has its storms, it has its tides, and, in its depths, it has its pearls too”

— Vincent van Gogh, The Letters of Vincent van Gogh

Please walk slowly on the ship, never rush. Keep one hand for yourself and at least one hand for the ship. Shut all doors firmly and keep fingers away from door frames.

0715 **Wake up call** - Good Morning!

0730 **Breakfast** is served in the **dining room**.

*This morning we hope to land and cruise at Salisbury plain. One of the South's Georgia's largest elephant seal breeding population haulouts & the second largest king penguin colony. **The red group** will go to shore first, **the blue group** will zodiac cruise; you will swap over on shore halfway through the morning.*

0900 **Divers:** Please meet the dive team on the **zodiac deck**.

0900 **Red group** please come to the **zodiac boarding area**. We will take you ashore in Salisbury plain.

0915 **Blue group** please come to the **zodiac boarding area**. We will take you for a zodiac cruise around Salisbury plain.

We will swap groups onshore.

1300 **Lunch** will be served in the **dining room**.

*This afternoon we hope to land and cruise at Rosita Bay. Here we hope to enjoy Antarctic fur seals, South Georgia Pipits, the southernmost singing bird, as well as South Georgia Pintail duck. **The blue group** will go to shore first, **the red group** will zodiac cruise; you will swap over on shore halfway through the afternoon.*

1515 **Divers:** Please meet the dive team on the **zodiac deck**.

1515 **Blue group** please come to the **zodiac boarding area**. We will take you ashore for a landing at Rosita Bay.

1530 **Red group** please come to the **zodiac boarding area**. We will take you on a zodiac cruise around Rosita Bay.

We will swap groups onshore.

+/-1845 **Recap** Please join our team in the **lounge** for our daily recap.

1930 **Dinner** in the dining room. Bon appetite!

"The world is a huge place. How will you know where you fit in unless you explore beyond your comfort zone?"

- Sir Ernest Shackleton

0645 **Wakeup call** - Good Morning!
0700 **Breakfast** is served in the **dining room**.

This morning we aim to land and zodiac cruise at Fortuna Bay. Here you will see a King Penguin colony, Fur & Elephant Seals, and many more birds and wildlife. The first group will go to shore, the second will zodiac cruise; you will swap over on shore halfway through the afternoon.

+/-0815 **Divers** Please meet the dive team on the **zodiac deck**.
+/-0815 **Blue group** please come to the **zodiac boarding area** (deck 3) for land.
+/-0830 **Red group** please come to the **zodiac boarding area** (deck 3), to cruise.

On return from your landing/cruise at Fortuna – please inspect your clothing once again – staff will be available to assist on deck 3 with cleaning equipment.

1230 **Lunch** will be served in the **dining room**.

This afternoon we hope to land at Grytviken. Here you can expect to see the old whaling station, church, cemetery, and visit the museum, shop & post office. You can pay by credit card or cash (GBP).

We will be inspected on disembarkation- please insure your muckboots, Velcro, pockets and backpack are clean.

+/-1445 **South Georgia Heritage Trust presentation.** A representative from the Heritage Trust Museum will come on board to give a short presentation about their current projects.

+/-1515 **Divers** Please meet the dive team on the **zodiac deck**.
+/-1515 **Red group** please come to the **zodiac boarding area** (deck 3), we will disembark you at the cemetery area and give a **toast to Shackleton at 1545 in the cemetery**.

+/-1545 **Blue group** please come to the **zodiac boarding area** (deck 3) we will disembark you at the museum.

1630 **Whaling Station Guided tour.** Please meet outside of the museum.

1815 **Blue group** will give a **toast to Shackleton in the cemetery**.

1815 **Red group** will be picked up from in front of the museum.

1845 **Blue group** will be picked up from in front of the cemetery.

1900 Please join the staff team in **the lounge** for the daily briefing.

1930 **Dinner** in the dining room. Bon appetite!

0345 **Wakeup call** - Good Morning! We will assess conditions at this time and do an announcement to wake you up.....or tell you to go back to sleep. 😊
Pastries & Juice will be available in the lounge.

This morning we hope to land and cruise at St Andrews Bay which host South Georgia's largest penguin colony!

0430 **Red group** please come to the **zodiac boarding area**. We will take you ashore in St. Andrews Bay.

0500 **Blue group** please come to the **zodiac boarding area**. We will take you for a zodiac cruise along St. Andrews Bay.

0630-0800 **Breakfast** is served in the **dining room**.

0830 **Blue group** please come to the **zodiac boarding area**. We will take you ashore in St. Andrews Bay.

0900 **Red group** please come to the **zodiac boarding area**. We will take you on a zodiac cruise along St. Andrews Bay.

1230 **Lunch** will be served in the **dining room**.

This afternoon we hope to land at Grytviken. Here you can expect to see the old whaling station, church, cemetery, and visit the museum, shop & post office. You can pay by credit card or cash (GBP).

We will be inspected on disembarkation- please insure your muckboots, Velcro, pockets and backpack are clean.

1330 **Biosecurity** – vacuum, paper clips and staff will be available deck 3 from 1330 to 1445.

+/-1515 **South Georgia Heritage Trust presentation**. A representative from the Heritage Trust Museum will come on board to give a short presentation about their current projects.

+/-1600 **Divers** Please meet the dive team on the **zodiac deck**.

+/-1545 **Blue group** please come to the **zodiac boarding area** (deck 3), we will disembark you at the cemetery area and give a **toast to Shackleton at 1600 in the cemetery**.

+/-1615 **Red group** please come to the **zodiac boarding area** (deck 3) we will disembark you at the museum.

1730 **Whaling Station Guided tour**. Please meet outside of the museum.

1830 **Red group** will give a **toast to Shackleton in the cemetery**.

1815 **Blue group** will be picked up from in front of the museum.

1845 **Red group** will be picked up from in front of the cemetery.

1915 **Recap** – Please join the expedition team in the lounge for our daily recap.

1930 **A special dinner** will be served on the **aft deck (deck 5)**, dress warmly.

0615 **Wakeup call** - Good Morning!
0630 **Breakfast** is served in the **dining room**.

This morning we hope to land and cruise at St Andrews Bay which host South Georgia's largest penguin colony! The first group will go to shore, the second will zodiac cruise; you will swap over on shore halfway through the afternoon.

0700 **Red group** please come to the **zodiac boarding area**. We will take you ashore in St. Andrews Bay.
0730 **Blue group** please come to the **zodiac boarding area**. We will take you for a zodiac cruise along St. Andrews Bay.
1230 **Lunch** will be served in the **dining room**.

This afternoon we hope to land at Grytviken. Here you can expect to see the old whaling station, church, cemetery, and visit the museum, shop & post office. You can pay by credit card or cash (GBP).

We will be inspected on disembarkation- please insure your muckboots, Velcro, pockets and backpack are clean.

1330 **Biosecurity** – vacuum, paper clips and staff will be available deck 3 from 1330 to 1430.
+/-1515 **South Georgia Heritage Trust presentation**. A representative from the Heritage Trust Museum will come on board to give a short presentation about their current projects.
+/-1600 **Divers** Please meet the dive team on the **zodiac deck**.
+/-1545 **Blue group** please come to the **zodiac boarding area** (deck 3), we will disembark you at the cemetery area and give **a toast to Shackleton at 1600 in the cemetery**.
+/-1615 **Red group** please come to the **zodiac boarding area** (deck 3) we will disembark you at the museum.
1730 **Whaling Station Guided tour**. Please meet outside of the museum.
1830 **Red group** will give a **toast to Shackleton in the cemetery**.
1815 **Blue group** will be picked up from in front of the museum.
1845 **Red group** will be picked up from in front of the cemetery.
1915 **Recap** – Please join the expedition team in the lounge for our daily recap.
1930 **A special dinner** will be served on the **aft deck (deck 5)**, dress warmly.

0615 **Wakeup call** - Good Morning!
0630 **Breakfast** is served in the **dining room**.

This morning we hope to land and cruise at St Andrews Bay which host South Georgia's largest penguin colony! The first group will go to shore, the second will zodiac cruise; you will swap over on shore halfway through the afternoon.

0700 **Red group** please come to the **zodiac boarding area**. We will take you ashore in St. Andrews Bay.
0730 **Blue group** please come to the **zodiac boarding area**. We will take you for a zodiac cruise along St. Andrews Bay.

1230 **Lunch** will be served in the **dining room**.

This afternoon we hope to land in cooper bay. Here you can expect to see

1330 **Biosecurity** – vacuum, paper clips and staff will be available deck 3 from 1330 to 1430.

+/-1515 **South Georgia Heritage Trust presentation**. A representative from the Heritage Trust Museum will come on board to give a short presentation about their current projects.

+/-1600 **Divers** Please meet the dive team on the **zodiac deck**.

+/-1545 **Blue group** please come to the **zodiac boarding area** (deck 3), we will disembark you at the cemetery area and give a **toast to Shackleton at 1600 in the cemetery**.

+/-1615 **Red group** please come to the **zodiac boarding area** (deck 3) we will disembark you at the museum.

1730 **Whaling Station Guided tour**. Please meet outside of the museum.

1830 **Red group** will give a **toast to Shackleton in the cemetery**.

1815 **Blue group** will be picked up from in front of the museum.

1845 **Red group** will be picked up from in front of the cemetery.

1915 **Recap** – Please join the expedition team in the lounge for our daily recap.

1930 **A special dinner** will be served on the **aft deck (deck 5)**, dress warmly.

0645 **Wakeup call** - Good Morning!
0700 **Breakfast** is served in the **dining room**.

This morning we hope to land and cruise at Gold Harbour which is regarded by many as one of South Georgia's most beautiful landing sites.

0800 **Red group** please come to the **zodiac boarding area**. We will take you ashore at Gold Harbour.
0815 **Blue group** please come to the **zodiac boarding area**. We will take you on a zodiac cruise around Gold Harbour.
 We will swap groups onshore.
1230 **Lunch** will be served in the **dining room**.

This afternoon we hope to offer a full ship zodiac cruise inside the spectacular cooper bay. There is a wealth of wildlife in this site. We hope to see chinstraps, gentoo and macaroni penguins as well as light mantle shooty albatross.

1500 **Blue group** please come to the **zodiac boarding area**. We will take you for a zodiac cruise at Cooper Bay.
1515 **Red group** please come to the **zodiac boarding area**. We will take you for a zodiac cruise at Cooper bay.
1815 **Recap** – Please join the expedition team in the lounge for our daily recap.
1900 **Dinner** will be served in the dinning room. Bon Appetit!

*We will sail into open sea this evening and the ship may move – please secure your belongings and be careful when moving around the ship.
Take your seasickness medication before we head out into open sea- the doctor will be available in the lounge after dinner to assist.*

No wakeup call this morning. Enjoy your sleep in!

0800 **Breakfast** is served in the **dining room**.

1000 **Wonders of the Southern sky** – Please join Lothar in the **lounge** to learn about what you can see at night in the southern hemisphere.

1230 **Lunch** will be served in the **dining room**.

1400 **Shackleton documentary** – Please join the expedition team in the **lounge** for a documentary about Shackleton and his famous Antarctic tale of tragedy, heroism, and endurance.

1600 **Journey of A68** – Please join Carina in the **lounge** for her lecture on one of the biggest tabular icebergs ever recorded.

1800 **Recap** – Please join the Expedition team in the **lounge** for our daily recap and briefing.

1900 **Dinner** is served in the **dining room**.

0000 = 2300 *Time change – 1 hour back*

‘No one had lost courage; with such comrades one should be able to manage under, I may say, any circumstances’

- Salomon Andree – Polar Explorer 1897

Please walk slowly on the ship, never rush. Keep one hand for yourself and at least one hand for the ship. Shut all doors firmly and keep fingers away from door frames.

No wakeup call this morning. Enjoy your sleep in!

0800 **Breakfast** is served in the **dining room**.

0930 **IAATO mandatory Briefing** – Please join the expedition team in the **lounge** to learn about the regulations in Antarctica.

1030 **Biosecurity:** We will call you by deck to **deck 3** to complete our biosecurity cleaning – please bring all your outerwear, backpacks, muckboots and tripods/walking sticks to be cleaned and/or checked. Please clean your gear beforehand – this is meant only as a check. ***Please listen for announcements.***

1230 **Lunch** will be served in the **dining room**.

This afternoon we hope to visit the South Orkney Islands, we will update you on arrival time. Please listen for announcements

+/-1500 **Filming & Editing Workshop** – Please join Dorette in the **Lounge** for her presentation on filming on our expedition – following this she will give some interactive editing tips in the **Lecture room**.

1630 **Drifting Life** – Please join Chloe in the **lounge** to learn about the plankton drifting in the depths of Antarctica.

1815 **Recap** – Please join the Expedition team in the **lounge** for our daily recap and briefing.

1900 **Dinner** is served in the **dining room**.

No wakeup call this morning. Enjoy your sleep in!

- 0800 **Breakfast** is served in the **dining room**.
- 1000 **Introduction to Antarctica** – Please join Lottie in the **lounge** to learn more about white continent we are about to visit.
- 1230 **Lunch** will be served in the **dining room**.
- 1400 **Antarctic Ice** – Please join Szymon in the **lounge** for his presentation examining the different types of ice that can be found on, and around, Antarctica.
- 1600 **Filming & Editing Workshop** – Please join Dorette in the **Lounge** for her presentation on filming on our expedition – following this she will give some interactive editing tips in the **Lecture room**.
- 1730 **Happy hour!** Come to the lounge and grab a drink at half price. 😊
- 1745 **South Georgia Heritage Trust Auction.** Dress up in your fine gowns and bow ties, joining the expedition team in the **lounge** for an afternoon of frivolity and fundraising! There will be several unique items available to the highest bidder, with all funds being donated to the SGHT for their conservation work in South Georgia.
- 1915 **Recap** meet the expedition team in the **lounge** for our daily recap.
- 1930 **Dinner** is served in the **dining room**.

"For scientific leadership, give me Scott; for swift and efficient travel, Amundsen; but when you are in a hopeless situation, when there seems to be no way out, get on your knees and pray for Shackleton."

—Sir Raymond Priestley.

- 0645 **Wakeup call** - Good Morning!
0700 **Breakfast** is served in the **dining room**. Bon appetite!

This morning we hope to land and zodiac cruise at Paulet Island. Paulet Island is home to the remains of a hut from 1903 – built by the survivors of the wrecked vessel the ‘Antarctic’ and thousands of Adelie Penguins!

- 0800 **Divers** Please meet the dive team on the **zodiac deck**.
0800 **Red group** please come to the **zodiac boarding area**. We will take you ashore at Paulet Island.
0815 **Blue group** please come to the **zodiac boarding area**. We will take you for a zodiac around Paulet Island
 We will swap groups onshore.
1230 **Lunch** will be served in the **dining room**. Bon appetite!

This afternoon we hope to offer a continental landing and a zodiac cruise at Brown Bluff. Brown Bluff is a great example of a “tuya”, a volcano that has been flattened by erupting through a glacier! The site is home a large Adelie penguin colony.

- 1530 **Divers** Please meet the dive team on the **zodiac deck**.
1530 **Blue group** please come to the **zodiac boarding area**. We will take you ashore at Brown Bluff.
1545 **Red group** please come to the **zodiac boarding area**. We will take you zodiac cruising at Brown Bluff.
 We will swap groups onshore.
1815 **Recap** – Please join the expedition team in the lounge for our daily recap.
1930 **Dinner** will be served in the dinning room. Bon appetite!

This evening we expect some rough weather; please be careful moving around the ship and secure your belongings. Remember one hand for the ship!



OCEANWIDE
EXPEDITIONS

Falkland Islands, South Georgia
& Antarctica

Wednesday 18th January 2023

Graham Passage & Wilhelmina Bay & Portal Point

0745 **Wakeup call** - Good Morning!
0800 **Breakfast** is served in the **dining room**. Bon appetite!

This morning we hope offer a zodiac cruise in the beautiful Graham Passage. Captain Skidsmo named it after his whale catcher Graham, which was the first to pass through it, on March 20, 1922.

0915 **Divers** - Please meet the dive team on the **zodiac deck**.
0915 **Red group** please come to the **zodiac boarding area**. We will take you on a zodiac cruise in the Graham Passage.
0930 **Blue group** please come to the **zodiac boarding area**. We will take you for a zodiac cruise in the Graham Passage.
1230 **Lunch** will be served in the **dining room**. Bon appetite!

This afternoon we hope offer a zodiac cruise in Wilhelmina Bay. We hope to spot marine wildlife and enjoy spectacular Antarctic scenery.

1445 **Divers** - Please meet the dive team on the **zodiac deck**.
1445 **Blue group** please come to the **zodiac boarding area**. We will take zodiac cruising in Wilhelmina Bay.
1500 **Red group** please come to the **zodiac boarding area**. We will take you zodiac cruising in Wilhelmina Bay.
1745 **Recap** – Please join the expedition team in the lounge for our daily recap.
1800 **Dinner** will be served in the dining room. Bon appetite!

This evening we hope to offer a continental landing and a zodiac cruise at Portal Point. Here we hope to enjoy seals hauled out on the snow and a short hike.

1900 **Divers** - Please meet the dive team on the **zodiac deck**.
1900 **Red group** please come to the **zodiac boarding area**. We will take you ashore at Portal Point.
1915 **Blue group** please come to the **zodiac boarding area**. We will take you zodiac cruising at Portal Point.
We will swap groups onshore.

0445 **Wake up call.** Good morning!
0500 - 0530 **“Grab n Go” light breakfast** will be served in the **dining room.**

This morning we hope to land and zodiac cruise at Danco, a small island in the Errera channel surrounded by icebergs and home to several gentoo penguin rookeries. During the landing, we hope to offer a hike to the upper colony, gaining approximately 130m elevation over a 1.5km trail.

*In addition, we hope to offer a **polar plunge** at the end of the landing, please wear your polar swimsuit/trunks under your clothing this morning – we will bring towels!*

0530 **Blue Group** - Please come to the **zodiac boarding area** for a landing at Danco Island.

0545 **Red Group** - Please come to the **zodiac boarding area** for a zodiac cruise around Danco Island.

1100 **Lunch** will be served in the **dining room.** Bon appetite!

This afternoon we will sail through the Gerlache Strait, on our way North. We hope to spot wildlife and enjoy our last views of Antarctic Scenery.

1300 **Muck Boot & Rental Gear Collection** – We will call you by deck to return your muck boots and any rental gear to the **shell doors on deck 3.** Please listen for announcements.

1500 **Antarctica Documentary** - Please join the expedition team in **the lounge** for popcorn and a special viewing of ‘Antarctica’ from ‘Seven Worlds, one Planet’, a documentary series narrated by David Attenborough.

1700 **Recap** – Please join the expedition team in **the lounge** for our daily recap.

1800 **Dinner** is served in the **dining room.** Bon Appetit!

This evening we will sail into open water – please secure your belongings and take your seasickness medication as required. Please remember to keep one hand for the ship and take care when moving around. We may need to close the outer decks – please pay attention to the signs on the outer doors.

No wakeup call this morning. Enjoy your sleep in!

0800 **Breakfast** is served in the **dining room**.

0900 **Photo competition** – Did you take pictures during the trip? Enter your best shot into our photo competition! Please find Mikhail in the **library** to submit your picture.

Pictures will be displayed in the lounge throughout the afternoon where you will be able to vote for your favourite pictures.

1100 **Medical History of Antarctica** – Please join Julia in the **lounge** for a lecture about the interesting history of medical exploits in Antarctica.

1230 **Lunch** will be served in the **dining room**.

1400 **Light Pollution** - Please join Lothar in the **lounge** with images from Earth at night.

1600 **Frank Hurleys Photography** - Please join Michael in the **lounge** to hear the stories behind the ultimate expedition photographer's famous photographs.

1800 **Recap** - Please join the expedition team in the **lounge** for our daily recap.

1900 **Dinner** will be served in the **dining room**.

2100 **Photo competition** - Please join expedition team in the **lounge** to reveal the competition winners.

*Please walk slowly on the ship, never rush. **Keep at least one hand for the ship.** Shut all doors firmly and keep fingers away from door frames.*

- 0745 **Wakeup call** – Enjoy your morning!
- 0800 **Breakfast** is served in the **dining room**.
- 0930 **How to get to Antarctica** - Please join Sasha in **the lounge** for a story of his journey to the white continent.
- 1100 **Race to the South Pole** - Please join Charlotte in **the lounge** to learn about this fascinating story of conquering South Pole.
- 1230 **Lunch** will be served in the **dining room**.
- After lunch you will receive your bill in your cabin. We will call you by deck to make payments at reception – **Please listen for announcements.***
- 1400 **Sextant Workshop** - Please join Lothar in **the lounge** to hear his presentation about sextant navigation and meet him afterward in the **lecture room** for a workshop.
- 1600 **Licence to Krill** - Please join Felicity in **the lounge** to learn about the threats marine life are facing today.
- 1815 **Farewell Toast & Trip Slideshow** - Please join the Captain and the expedition team for a toast to our voyage through the Southern Ocean and a slideshow of our expedition.
- 1900 **Dinner** will be served in the **dining room**.

*Please walk slowly on the ship, never rush. **Keep at least one hand for the ship.** Shut all doors firmly and keep fingers away from door frames.*



Falkland Islands, South Georgia
& Antarctica
Sunday 22nd January 2023
Disembarkation - Ushuaia

0715 **Wakeup call** – Good Morning!

0730-0830 **Breakfast** will be served in the dining room.

*Please place your large/check-in luggage outside your cabin no later than 0730.
During breakfast we will collect your luggage and deposit it on the pier where it will
be your responsibility to identify and collect each item.*

0830-0900 **Disembarkation** – Please make your way to the gangway to disembark
Hondius.

*Upon disembarkation, **please identify and collect your luggage** from the pier and;*

- 1. Take it with you into Ushuaia and walk into town.*
- 2. Put it on the airport bus and get on the bus.*
- 3. Put it in the luggage truck.*
- 4. If you have arranged your own transport – please take your luggage*

***On behalf of all at Oceanwide Expeditions and all on board Hondius we
thank you for a truly incredible expedition.
Safe travels home.***