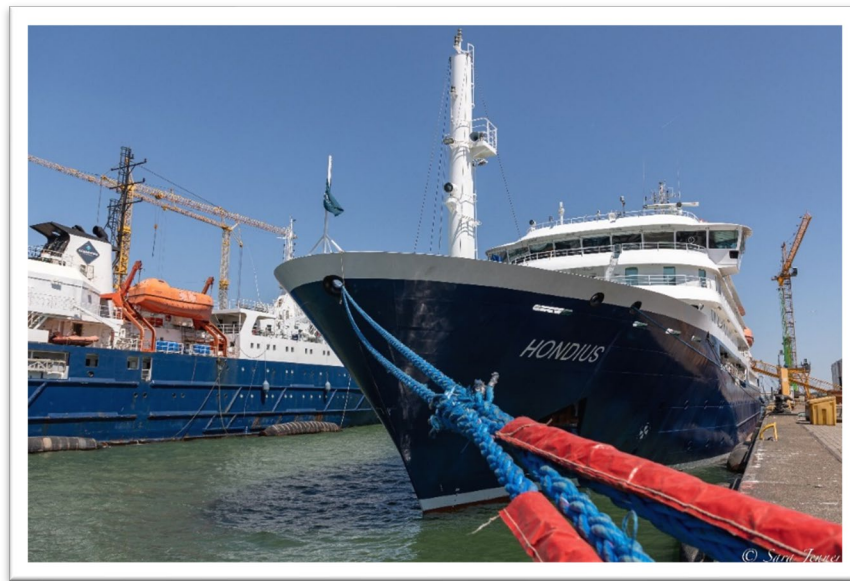




Arctic Ocean Expedition, Aberdeen – Fair Isle – Jan Mayen – Ice Edge – Spitsbergen - Birding

3rd June – 14th June 2023

M/V Hondius



The MV Hondius was built in 2019 in Brodosplit, Croatia, as an expedition vessel for Oceanwide Expeditions. Hondius is 107.60m long, 17,60m wide and has a maximum draught of 5.3m and has an exceptionally high Ice class of PC6, a top speed of 15 knots and 3 diesel generators. The Hondius sails on LSMGO. Now the ship is sailing as a 176-passenger vessel with 83 cabins. Our beautiful, modern vessel carries 369m³ of fresh water and has a water plant producing 70m³ per day. In many ways, the Hondius is the perfect vessel for a true polar adventure!

Captain Toni Salo

and his international crew

Staff Captain: **Elizabar Kadaria**

Chief Officer: **Matei Mocanu**

2nd Officer: **Igor Nazarov**

3rd Officer: **Don Buren**

Chief Engineer: **Sebastian Alexandru**

Hotel Manager: **Oleksandr Lyebyedyev**

Assist. Hotel Manager: **Alfredo Bonifaz**

Head Chef: **Ralf Barthel**

Ships Doctor: **Evy Broeders**

Expedition Leader: **Sara Jenner**

Assist. Expedition Leader: **Adam Turner**

Assist. Expedition Leader: **Claudio Ghiglione**

Expedition Guide: **Bill Smith**

Expedition Guide: **Anthonie Luteijn**

Expedition Guide: **Andrew Crowder**

Expedition Guide: **Charlotte Taplin**

Expedition Guide: **Koen Hoekmeijer**

Expedition Guide: **Aad Wever**

Expedition Guide: **Pelin Asfuroglu**

Expedition Guide: **Marco Rosso**

Expedition Guide: **Chloe Marechal**

Expedition Guide: **Simon Davies**

Expedition Guide: **Meike Sjoer**

Expedition Guide: **Paolo Belleze**

Expedition Guide: **Herman Sips**

Expedition Guide: **Ashleigh Kitchiner**

Day 1 – 3rd June

Vlissingen - Embarkation Day

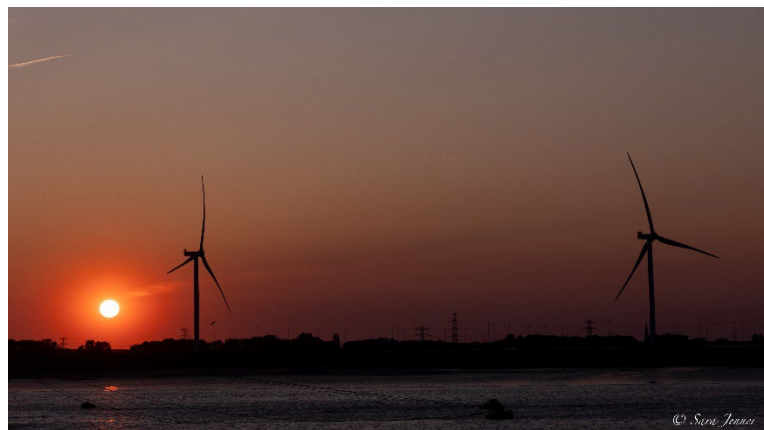
12:00 GPS Position: 51°27.649'N / 003°41.806'E

Wind: NNE 5, **Sea State:** Calm, **Weather:** Partly. Cloudy, **Air Temp:** 21°C, **Sea Temp:** 17°C



Our journey begins with a coach ride to the port of Vlissingen, pulling up on the quay alongside m/v *Hondius*. She is looking splendid in the bright sunshine and would be our home for the next twelve days. Following our luggage on board, we are greeted by the enthusiastic, smiling staff and shown to our cabins. Once settled in we all gather in the observation

lounge for a mandatory safety drill, which includes an evacuation exercise, ending next to our designated lifeboat station. Back to the lounge we are treated to a glass of fizz and delicious canapes during which time Captain Toni Salo welcomes us on board. We then have initial briefings by the Deputy Hotel Manager, Alfredo, and our Expedition Team Leader, Sara, before she invites her multi-talented team to introduce themselves to us. Then it was down to the dining room for our first taste of the excellent food on board. Our slightly delayed departure happily coincided with the end of dinner and so we are able to experience our sail away in the beautiful evening light. Initially, *Hondius* is spinning on its axis to calibrate its compass (“compass swinging”) before heading north (where she will spend the next five months beyond the Arctic circle) - our adventure has now begun!



Day 2 – 4th June

Sailing Towards Aberdeen

12:00 GPS Position: 53°38.0'N / 000°48.7'E

Wind: NE 3, Sea State: Slight, Weather: Overcast, Air Temp: 10°C, Sea Temp: 13°C



The day begins with a sense of anticipation as we gather to collect our boots for the voyage ahead. We took our time, trying on different sizes and searching for the perfect fit to ensure comfort during our adventure. Afterward, Bill, our charismatic guide hailing from Scotland, entertains us with an engaging and humorous lecture, vividly describing the rich culture

and history of his native land. As the day progresses, Andrew, our avian expert, enlightens us about the remarkable sea birds that populate the North Sea. We are fascinated by their unique characteristics and behaviors, gaining a deeper understanding of the region's diverse wildlife. As evening approaches, we gather for our first daily recap. Anthonie shares intriguing information regarding the significance of Dogger Bank, an underwater plateau renowned for its geological importance and vital role in the North Sea's ecosystem. Following this, Paolo provides insights into the meticulous calibration of the ship's compass, highlighting the precision required for accurate navigation. Finally, Pelin regales us with captivating tales of superstitions at sea, immersing us in the age-old lore and beliefs passed down through generations of seafarers. As night falls, we retire to our cabins, eagerly anticipating our arrival in Scotland. The calm sea gently carries us towards our destination.



Day 3 - 5th June

Aberdeen

12:00 GPS Position: 57 09 5 N 001 59 8 W

Wind: NNE2, **Sea State:** Calm, **Weather:** Overcast, **Air Temp:** 10°C, **Sea Temp:** 12°C



Monday 5th June found us off Aberdeen where we are waiting for the pilot to guide *Hondius* into Aberdeen harbour. Slowly, but steadily we are guided into the harbour where *Hondius* docked. Buses are already waiting, but British immigration had to process us into the UK first. Once that had been completed we board the buses and at ten o'clock set off to Newburgh-on-

Ythan, to the North of Aberdeen. Approaching Newburgh we enter the Forvie National Nature Reserve on the river Ythan estuary, with its omnipresent gorse, the prickly yellow plants. Walking into the dunes, with gorse plants everywhere, the botanists had a “go” at naming the many species of plants lining our path while the bird and animal lovers walk up the dunes to look for seals and birds. Both to the North and South of Aberdeen there are bird reserves. One of these is *Bullers of Buchan*, just North of Cruden Bay, with its famous bird cliffs where we arrive at 12.30 hrs. We set out into different directions, most having the puffins on their minds as their favourites. Staying strictly to the paths across the steep cliffs, dozens of Puffins are seen, admired and photographed. The rocks are home to dozens of Puffins,



hundreds of Kittiwakes and Northern Fulmars. The third and final part of this busy day is the former fishing village of Footdee (affectionally called “Fittee”), now fully incorporated into the town of Aberdeen. Situated on the seaside the houses facing the coast have especially strengthened walls as rough seas would often splash against and over the houses. Today it is a vibrant little area with an eccentric mix of orderly cottages and quirky ramshackle outbuildings with little evidence of its previous life as a poor “Fish Town”. By the time we arrive back at *Hondius*, 40 new passengers had come onboard who received the welcome speech by Sara, the introduction to the expedition staff and safety drill. Recap, dinner and the wildlife recap concluded a fantastic day!

Day 4 - 6th June

Fair Isle

12:00 GPS Position: 59 30 4 N 003 38 3 W

Wind: W 3, **Sea State:** Calm, **Weather:** Overcast, **Air Temp:** 15°C, **Sea Temp:** 11.°C



First light saw us approaching the world-famous Fair Isle from the south; although it is cloudy, the sea is incredibly flat and the light is bright – this in itself is a real rarity in the unpredictable seas around the Shetland Islands. As we land the island's incredible birdlife welcomes us ashore with Arctic Terns, Fulmars, Kittiwakes and Puffins.

We all begin to walk North up the road accompanied by Lapwings, Skuas and legions of Sheep with the Museum and Hall as the first destination for most of us. In the Hall we are welcomed by friendly Fair Isle folk offering complimentary tea, coffee and amazing home-bakes along with a fine selection of world-renowned Fair Isle knitting and artwork from the talented island residents. Full of tea and cake, the vast majority of us now had one goal fresh in our minds – PUFFINS! We all carried on North up the road, past Skuas, past the Bird Observatories Heligoland traps (designed to catch migrant birds for ringing and scientific research), past the remains of the German plane the Heinkel (crash landing on the island during WW2) and past the busy construction site where the new Fair Isle Bird Observatory is rapidly being built. After several hours 'filling our boots' with frame-filling photos of the wonderful Puffins, we all gradually filtered our way back south down the island with some more adventurous souls heading over to the west cliffs in search of the Gannet colonies. The day flew past, the eight hours spent on the island were gone in a flash and as we wound our weary way back to the waiting Zodiacs we were full of brilliant memories of this stunning island. Back on the ship we tucked into a very welcome Scottish-inspired dinner and then sat down at the wildlife recap to fill in the very impressive list of birds and mammals we had seen through the day. With so many super-keen and super-knowledgeable staff and guests on board nothing was missed!



Day 5 - 7th June

At sea sailing towards Jan Mayen

12:00 GPS Position: 62 54 4 N 004 50 4 W

Wind: NNE3, **Sea State:** Slight, **Weather:** Partly Cloudy, **Air Temp:** 5°C, **Sea Temp:** 10°C



We wake up feeling well rested after a day's worth of walking on Fair Isle the previous day. Sara, our Expedition Leader, calmly wakes us all up, welcoming us to our day at sea, with the hope of some good sailing conditions. One Minke Whale, Storm Petrels and Manx Shearwaters are seen early doors, setting us up for quality wildlife encounters! Koen starts the day's lecture program with a guide to

wildlife photography. He takes us through his top ten tips on how to capture the spectacular moments we will see and have already seen on this trip. We then head over to the lecture room where Paolo follows with his fascinating tale of the Inuit who was found in Aberdeen in a kayak in 1700s. He tells us how Innuits were put in human zoo's and how this kayaker may have been an escapee from one of these places. The afternoon starts with Anthonie giving a reprise of his 'Ocean Waves' lecture. He details how the tides work across the globe creating the conditions we expect in the polar regions. We then hear 'WHALE!' and everyone runs out the door, a few distant blows are seen and with a photo we are able to identify them as Northern Bottlenose Whales, a deep-diving whale that is rarely seen. Through the afternoon small groups of beautiful Long-Finned Pilot Whales are seen logging and slowly swimming at the surface. Due to the beautiful conditions, the sun hits their glossy black skin and glitters. We see some 50 animals with multiple calves in the calm seas. After yet another superb dinner we wander out onto the decks to enjoy the superb sunlit evening. At this time of year, this far north, the sun barely dips below the horizon. This meant that, at 21:15pm, we see a Minke Whale, then a few splashes and blows are seen in the distance. This turns out to be a pod of four Orca off the starboard side and huge Fin Whales on the horizon. The blows of Fin Whales can be up to 6 m high as they are the second largest whale meaning that we could see them dead-ahead on the horizon. What a spectacular day of wildlife encounters!



Day 6 - 8th June

At Sea

12:00 GPS Position: 67 52 6 N 007 57 6 W

Wind: SSW 6, Sea State: Slight, Weather: Overcast, Air Temp: 5°C, Sea Temp: 3 °C



It was an exciting day as our expedition cruise ventured across the polar circle, marking a significant milestone in our Arctic adventure. The day began with a delicious breakfast, followed by an informative briefing conducted by our knowledgeable expedition leader, Sara. She enlightened us about the Association of Arctic Expedition Cruise Operators (AECO) and the crucial polar bear safety

regulations that ensure responsible and sustainable tourism in this pristine region. Eager to deepen our understanding of the Arctic, we then gather for a lecture delivered by Pelin, who provided us with an insightful introduction to the wonders of this unique environment. After a satisfying lunch, the expedition team continue with an engaging lecture by Ashleigh. She delved into the realm of underwater acoustics and educated us on the captivating world of marine mammals. Learning about their communication methods, echolocation, and the



importance of sound in their lives added a new dimension to our appreciation of the Arctic's diverse ecosystem. Later in the afternoon, we were treated to a joint presentation by Meike and Aad, who focused on Jan Mayen, our destination for the following day. Jan Mayen is a remote island situated in the midst of the vast ocean, and we eagerly anticipated our upcoming visit. Meike and Aad's presentation offered a captivating glimpse into the island's history, geography, and unique flora and fauna. To commemorate our crossing of the Arctic polar circle, the crew surprised us with a delightful happy hour. The ship's lounge buzzed with cheerful conversations as we mingled, exchanged stories, and savoured half-priced drinks. As night fell, we gathered for the evening recap, where our expedition leaders discussed the plans for tomorrow's excursion to Jan Mayen. With a mix of excitement and curiosity, we retired to our cabins, filled with anticipation for the adventures that awaited us on this remote island in the middle of the ocean.

Day 7 - 9th June

Jan Mayen

12:00 GPS Position: 70 58 1 N 008 44 0 W

Wind: SSE 5, Sea State: Slight, Weather: Fog/rain, Air Temp: 3°C, Sea Temp: 2.7°C



Today, we arrive in Jan Mayen early in the morning. The weather conditions are challenging, with thick fog and strong winds. As a result, the planned disembarkation on the island is postponed. However, amidst the fog and wind, we are greeted by the sight of Northern Fulmars gracefully soaring around the boat. After careful evaluation, a zodiac is launched into

the water to gauge the conditions near the island. Our experienced expedition leader Sara gives the green light: we are clear to disembark on the remote island of Jan Mayen! Excitement fills the air as we prepare for the adventure ahead. The journey from the boat to the beach in the zodiac is bumpy and very wet, but our anticipation overshadows any discomfort. As we reach the shore, we are greeted by the rugged beauty of Jan Mayen, a place few have the opportunity to visit. In the afternoon, we gather for a series of enlightening lectures.

Adam takes the stage and captivates us with the story of Benjamin Leigh Smith, a renowned Polar Explorer. The tales of his expeditions and discoveries leave us in awe of his courage and determination. Following Adam's lecture, Chloe takes us on a fascinating journey into the curious life of plankton. Her presentation sheds light on the intricate world of these tiny



organisms, revealing their importance in the marine ecosystem. Who would have thought that copepods could be so intriguing? As the day unfolds, we are filled with gratitude for the chance to explore Jan Mayen and all of its beauty. Tomorrow, our journey continues as we set our course towards the pack ice, eagerly anticipating new discoveries.

Day 8 - 10th June

Arriving to the pack ice

12:00 GPS Position: 75 02 5 N 006 10 8 W

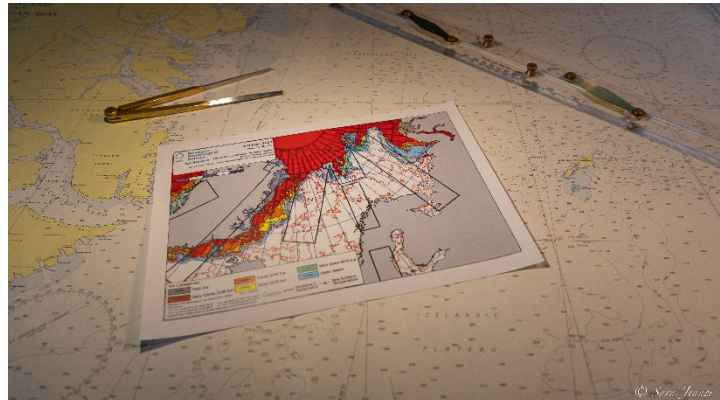
Wind: S2, Sea State: Slight, Weather: Fog, Air Temp: 3°C, Sea Temp: 3°C



When getting up this morning we notice that yesterday's fog, in varying degrees of denseness, is still obscuring the horizon. After breakfast we join a combined lecture by Marco and Chloé on sea ice dynamics. Chloé discusses the micro-biology on and under the ice, such as algae, a subject she is so passionate about. Northern Bottlenose Whales get all those gathered on the front deck on their toes. Somewhat

later they get even more excited when two of those very rare Bowhead Whales briefly appear. Rumour has it that Herman has ordered them as a trailer for his lecture on Bowhead Whales in the afternoon... In the afternoon Herman gives a lecture on the mysterious, elusive Bowhead Whale. He tells us about the state-of-the-art knowledge on it. Various groups are found in the northern waters. The Spitsbergen population totals some 325. As a species the Bowhead Whale is threatened, the more so as they reproduce very slowly. Some are reputed to have reached the

age of 200 years. Fascinating footage of this mysterious whale is shown, eating with its enormous beak wide open. A video of two 100-tonne whales copulating is unique. After Herman's lecture we are treated to our first Polar Bear, albeit briefly: this majestic animal disappears into the fog. At 16.00 hrs. we enter what is called very open drift ice. During recap various subjects are treated such as fog, looking at art, as illustrated by the art of the sea;



questions from the question box are answered. At 20.45 a second Polar Bear appears, this time closer to the ship. This King of the Arctic walks and swims away from the ship but with our binoculars we can follow the animal a long time. At the same time an Ivory Gull is observed in front of and behind the ship. A splendid day with our first Bowhead Whale and a Polar Bear ends. In the evening *Hondius* sets off to denser pack ice.

Day 9 - 11th June

Amongst the pack ice

12:00 GPS Position: 75 49 2 N 003 18 0 W

Wind: SW2, **Sea State:** Calm, **Weather:** Overcast, **Air Temp:** 0°C, **Sea Temp:** 3°C



As we stir in our comfortable gently rocking bunks, bodies twitching thinking of breakfast or the toilet. The day dawns dull ...the sky is overcast with clouds as we slid again into the broken edge of the pack ice. Everyone has high expectations after our dramatic encounter with the swimming bear amongst the ice floes yesterday. How could it get any better than a day landing on Jan Mayen, experiencing whales, Ivory gulls and interesting lectures. Well, it just did, no sooner after we finish

breakfast and start scanning the ice for a discordant creamy coloured lump when suddenly, an excited passenger spots a seal carcass, the bones protruding dramatically from what was left of the body. Binoculars scanned left and right then an excited cry...there!!!!

We have another bear in our sights. This time a magnificent healthy specimen resting on a large floe after his feast on the adjacent recent kill only occasionally looking briefly at us, being more pre-occupied with resting, fitfully dozing, raising its head only occasionally. Everyone managed to take terrific photographs of the bear and the hundreds of birds wheeling about the vessel. What a start to another great day. At 11am, Ralf our friendly exceedingly professional chef delivered a detailed



explanation of the intricacies of the catering side of the vessel. It was apparent from the account of the ordering complexities that it was a monumental task to ensure the smooth operation of the catering side of the vessel. 8000 eggs taken on board in Holland, cheese- 150 kilos in 11 days to keep the Dutch happy. 150 kilos of rice for the crew for 11 days ...the intricates of 'fridge' management, container delivery, fresh produce etc., all mind bogglingly complex and this is even before Ralf the chef and staff, start composing these beautiful dishes in the kitchen. The operation is awesome and the presentation and food quality simply superb. Easily one of the most interesting talks on board. Next was our nautical expert guide Bill with a highly detailed account of Hondius, firstly giving a perspective by comparing the vessel with

Plancius and Ortelius then focussing on the construction and operation. His explanations... [often humorous to sustain interest] combine serious points with fun to retain interest. In the afternoon a large audience listened to our Acoustic researcher expert Ashleigh explain the fascinating audio facts about Beluga, Humpbacks, Sperm and Blue whale sonar, and the astonishing deep diving properties of beaked whales etc.



A surprise announcement had us surging with excitement as Sara announces we are going to land on the sea ice! The team launch the zodiacs, scout a large piece of ice to ensure it is safe and slowly and diligently bring us to the ice in groups of 40. We all feel so excited to get to experience this and even the Expedition Team were smiling from ear to ear!

Another super Oceanwide expedition day ended as our super Chef Ralf organised music and a BBQ on the deck in the ice...how could this get any better we thought!

Well unbelievably it did, during frantic wild joyous dancing on the aft deck an ivory gull flies casually past us on the starboard side. Creating an exit from the dance floor as everyone rushed cheering to the rail. What an amazing Oceanwide Expeditions day ... excitement, education and endless FUN!

Day 10 - 12th June

At sea sailing to Svalbard

12:00 GPS Position: 77 38 6 N 004 02 03 E

Wind: W6, Sea State: Slight, Weather: Overcast, Air Temp: 4°C, Sea Temp: 5°C



Our day starts most unexpectedly early when our expedition leader, Sara, wakes us up at 05:00. The staff on the bridge spot a large haul out of seals in the pack-ice and Sara decides that this wonderous sight was something we just could not miss. Bleary-eyed, we get dressed and make our way to the outer decks or the bridge to find our target. What was laid out before us is a wildlife

spectacle of breath-taking magnitude –thousands of Harp Seals resting on the pack ice! The varied colouration of their bodies was easy to see and added to the visual experience because no two individuals were the same - a collage of grey, silver and black. For some it was back to bed to catch up on sleep, but many decide to stay up supported by coffee and pastries provided by the Ferdie, the pastry chef. Claudio kicks off the morning lecture programme with a sobering talk about climate change and the problems that are coming our way. Andrew lightens the mood with his amusing “Strange World of Birders” – a comic peek behind the curtains of the lives of



seriously passionate birders. Outside the wind is getting up, producing the roughest seas of the trip. With not so many of us out on the decks, Marco continued the lecture programme by introducing us to the geology of Svalbard and Simon packed out the lecture room with his talk on the breeding birds of the archipelago. And so we moved onto the evening recap from Sara with the details of our first landings on Svalbard and (hopefully) some encounters with the mighty Walrus. Dinner then follows but the day was about to end as it started! Just as we are tucking into our main course a number of large blows are sighted from the bridge and the call came over the PA system encouraging us to get out to see them. Those of us that were quick enough managed to see both Blue and Fin Whale together – the two largest animals that have ever lived on our planet!!

Day 11 - 13th June

Poolepynten and Gyertsodden

12:00 GPS Position: 78 30 3 N 012 18 6 E

Wind: NW4, **Sea State:** Slight, **Weather:** Rain, **Air Temp:** 0°C, **Sea Temp:** 4°C



© Koen Hoekemeijer

Today we wake up to some very windy gusts of 40 knots. Sara's soft voice comes on the PA system and informs us we have to delay operations. But with only a 30 minute delay we donned our lifejackets and are on the way to see the stinky, but very intriguing Walrus at Poolepynten! There are six seen on the land and in the water. We are guarded by the expedition staff who are keeping a

watch for Polar Bears with their rifles and flare guns. It is very humorous watching the Walrus all farting and rolling around on each other! We really understand what Charlotte said in her lecture about the Walrus not needing personal space! I am not sure how we managed to work

up a hunger for lunch, but we did and it is delicious as always. In the afternoon we land at Gyertsodden to do a hike and zodiac cruise! It feels great to stretch our legs and get amongst the wildlife. We are lucky enough to see a Rock Ptarmigan, Snow Bunting, Reindeer and a Polar Fox foraging on the shore! Our guides made sure to keep us in a tightly knit group just



© Koen Hoekemeijer

incase a Polar Bear sprung upon us! Unfortunately, tonight is the last night of the cruise so it is time to get dressed and enjoy a glass of prosecco with the team. Koen had been spending the last 12 days making a slideshow for us all and tonight is the night he shows it to us. It is a beautiful display of everything we have seen and experienced the 12 days, it makes us feel emotional and nostalgic, it really summed up all the magnificence of this trip, thank you Koen! We lavished in the final four course dinner the chefs put on for us and during dessert we had the privilege of clapping all the dining staff and chefs we had been looking after us the last 12 days.

Day 12 - 14th June

Disembarkation – Longyearbyen Port

12:00 GPS Position: 78 10 126 N 014 19 286 E

Wind: SW1, Sea State: Calm, Weather: Overcast, Air Temp: 4°C, Sea Temp: 5°C

Well the final day is here. Our bags are packed and left outside our doors for the staff to collect. After breakfast at 0900 we disembark the ship and say goodbye to Sara and all of her team, what a team we can't thank them enough for all their knowledge and guidance on this trip, we will definitely be back!

Thank you all for travelling with us on this voyage; for your enthusiasm, support and good company. We very much hope to see you again in the future, wherever that might be!

Total distance sailed on our voyage: 3011 nautical miles

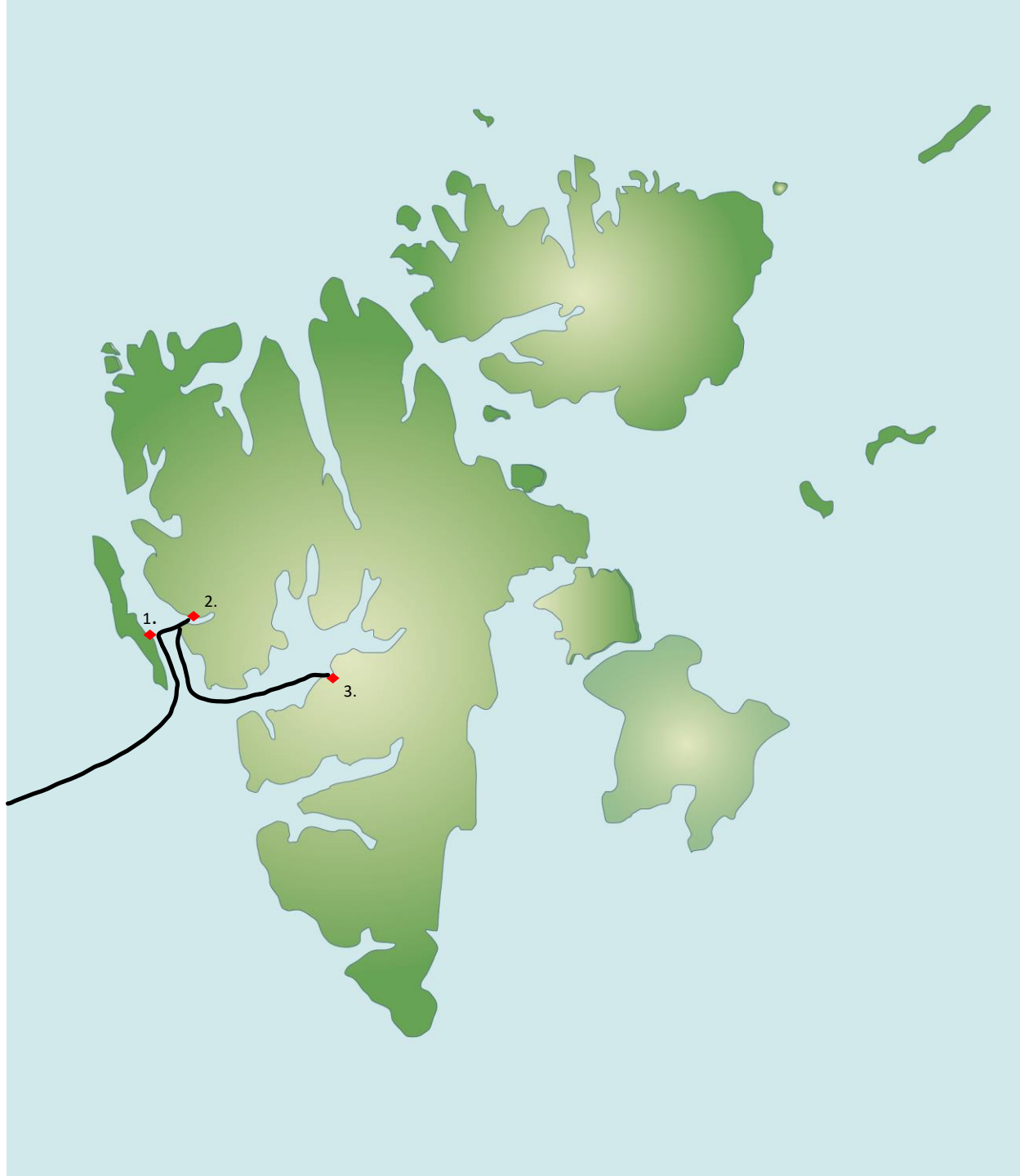
Furthest North: 78 09 938 N 014 17 296 E

**On behalf of Oceanwide Expeditions, Captain Toni Salo,
Expedition Leader Sara Jenner, Hotel Manager Oleksandr Lyebedyev
and all the crew and staff of M/V Hondius, it has been a pleasure travelling with you!**





1. Aberdeen (day tour + embarkation)
2. Fair Isle (landing)
3. Jan Mayen (landing)
4. Pack Ice Edge (ship cruise & landing on ice)
5. Poolepynten (landing)
6. Gjetsenodden (landing & zodiac cruise)
7. Longyearbyen (disembarkation)



1. Poolepynten (landing)
2. Gjetsenodden (landing & zodiac cruise)
3. Longyearbyen (disembarkation)

Sara Jenner – Expedition Leader



For as long as Sara could remember she has had a passion for travel and searching for the wildest and most remote places on earth.

Back in the UK when she was only 10, she remembers trading in her favourite pink bicycle for the money to start her travel fund. Every birthday and Christmas she added a little more in the kitty and finally, at 18 she realised her dream of diving at the Great Barrier Reef! At that point the travel addiction was born. Ever since Sara has been travelling the globe in search of wild and remote places and has spent many

months volunteering on wildlife conservation projects in a bid to help some of our most iconic and endangered species.

Sara's love of wildlife and the great outdoors has taken her to all seven continents, and she has travelled extensively in the polar regions including the Antarctic Peninsula, Weddell Sea, Ross Sea, Falklands, South Georgia, NZ and Australian Sub Antarctic Islands, Spitsbergen, Greenland, Iceland, Baffin Island and Canadian High Arctic. Returning to the UK, Sara used this knowledge to work in the travel industry as a polar specialist for several years, until the travel bug hit again, when she decided to swap life on the land for a life at sea and joined the Oceanwide Expedition Team in 2016.

During 2020-2021 she worked extensively on a leopard seal identification project and took the opportunity to fulfil a lifetime dream of visiting South Georgia in winter by working on the M/V Pharos, which is deployed by the South Georgia Government as a fishery patrol vessel.

Sara is a keen wildlife photographer and when she is not wrapped up warm in the polar regions she enjoys working as a photographic guide in Botswana, on the beautiful Chobe River and Okavango Delta, so really has a life of two halves.

Adam Turner -Assistant Expedition Leader



Adam was brought up in countryside of Essex, England. He began sailing at the age of 9 and began working on the local river aged 12 before leaving school.

By 16 he had a small fishing boat and was working on boatyards and taking tourists to see the local seal colonies as well as helping out on the local Lifeboat.

Adam then joined HM Forces and was posted to Northern Ireland and in the UK, he also served in Kenya as a boat operator. In 2002 Adam joined the Police and spent several years on a specialist unit working across the UK

with his search dog Charley.

Since being a young lad Adam had dreamt of working in the Antarctic like his Uncle had done in the late 1980's, and in 2014 Adam left the Police to work as Boating Officer for British Antarctic Survey at King Edward Point, South Georgia where he spent just over a year.

Adam studied at Middlesex University and often gives lectures on history, in 2017 he was elected as a Fellow of the Royal Geographical Society, while working as a guide and Consultant.

In 2020 Adam began working fulltime for Oceanwide Expeditions as Field Operations Manager.

Adam holds a commercial masters certificate and instructs in several marine disciplines, he enjoys diving, climbing, kayaking and outdoor activities.

Claudio Ghiglione – Assistant Expedition Leader



Claudio was born in Italy in 1983. He is a marine ecologist specialised in polar regions, expedition guide and nature photographer.

Interested in science and nature since he was very young, he graduated first in *Marine Environmental Sciences* (BA) and then in *Marine Science* (MA). In March 2017 he obtained a *PhD in Earth, Environmental and Polar Sciences* run in cooperation with the Italian National Antarctic Museum (Italy) and the British Antarctic Survey in Cambridge (UK).

For several years he worked as a polar researcher focusing his work mainly on the South Pole (Antarctica); his objective is to analyse and evaluate information used for ecological modelling and possible future scenarios following global warming. During his academic career, he actively takes part in some scientific expeditions both in Arctic and in Antarctica in cooperation with Norway and England.

His passion for travel, mainly to cold and often inhospitable places, and his career as a photographer led him to travel a lot, creating and managing – often in complete autonomy – itineraries and logistics. In 2017 – thanks to his professional experience, the skills acquired over the time and the need to spend more time on the field – he starts working full time as a guide Oceanwide.

Specialised in nature, scientific and travel photography, Claudio uses his photos as a means of telling stories to draw attention mainly to his main subjects, namely animals, nature and environment. In the 2019 he published his first book ‘Polar Lights’ with whom he shares the passion for nature photography.

Bill Smith - Expedition Guide



“Super Bill” as described by his colleagues and clients, is a fun-loving outdoor pursuits enthusiast, cartoonist and former Head of Art and Design Education at Ellon Academy Aberdeenshire.

Bill joined Oceanwide Expeditions as a guide when Plancius was built and over the last few years has become addicted to the Polar Regions.

He has 58 years’ experience of Art and Design Education and Design for Industry. Plus 58 years leading and instructing a range of outdoor pursuits.

Bill delights in producing humorous cartoon logs of each trip and operates as an Artist / Designer / Illustrator / Cartoonist

Aside from his artistic commitments Bill is qualified instructor in a range of Royal Yachting Association disciplines including sailing, windsurfing and powerboating. He is also a British Canoe Union Open Canoe Instructor and British Caving Association Local Cave leader. He is a safety expert in these fields.

During the winter at home Bill is a National Patroller for the British Association of Ski Patrollers and in addition is a member of Member of the Federation Internationale de Patrolles De Ski.

As Bill lives in the North-west of Scotland he is President of Lochinver Highland Games Committee and former Chieftain Assynt Highland Games.

Bill is an Honorary Member Assynt Crofters Trust and recently awarded Honorary Lifetime Guardian of Island of South Georgia.

Anthonie Luteijn – Expedition guide



Anthonie is a passionate surfer and a life-long ocean lover. He enjoys exploring the cultural and scenic diversities of different countries, as well as to connect with the people he meets along the way.

He grew up, right on the beach, in the southwestern coastal province of The Netherlands, Zeeland. For his studies, he moved to Delft where he completed his bachelor's degree in Civil Engineering and his master's degree in Hydraulic Engineering at the Technical University of Delft. He has a coastal specialisation, which embraces a great interest in oceanography and climate change.

During this program, he took part in several projects around the world and conducted research on an artificial fish migration river in the Netherlands.

In the summer months, Antonie enjoys sharing his passion for the oceans as a surf coach. He sees the ocean as a diverse and unique place which feels like home.

One of the projects he has done was on the plastic waste problem in Indonesia. By creating a real-world, coupled economic-environmental model, focusing on one of the plastic polluted rivers.

He is very much looking forward to his first season working as an expedition guide on board with Oceanwide. As Antonie would say: "I like to be challenged and am passionately hopeful to impact other people's lives positively. The sea is one of my greatest passions and I would like to share the energy it gives me and this passion on board. To be part of this Antarctic expedition is a unique and much-appreciated opportunity in many ways!"

Andrew Crowder – Expedition Guide



Andrew is an experienced naturalist with a life long history of observation, study and sheer enjoyment of wildlife. His interest in natural history started as a young boy watching birds and they remain his first passion. Focusing mainly on Western Palearctic species, he has travelled extensively and accrued a wealth of knowledge. As part of that journey of discovery, he has also developed self-taught skills in wildlife photography.

Andrew has always been drawn to the sea and is a CMAS Class 2/BSAC qualified Advanced Scuba Diver; he has had the privilege of experiencing incredible marine life which few others get to see. Time spent exploring the underwater world helped spawn his other main interest: cetaceans. Andrew has over twenty years of experience with these amazing animals, undertaking scientific surveys and guiding on cruise ships in UK, European and Polar waters.

Andrew recognises that few wildlife encounters spark such an emotional reaction in humans as when they see whales and dolphins. He uses his knowledge and enthusiasm to help more people share such inspirational experiences and thereby promote the conservation of our precious natural world.

Charlotte Taplin – Expedition Guide



Charlotte grew up by the Coast in Cornwall, United Kingdom. From a young age she has always been fascinated by wildlife and the ocean. She studied Wildlife Conservation at University and then spent the next 10 years travelling through South America, Australasia and Africa. Charlotte's love for boats began in 2013 where she worked on research and dive vessels visiting remote regions of the Great Barrier Reef. Her interest in Marine Biology grew in Australia and New Zealand while studying Humpback, Minke and Sperm Whales.

After driving overland in a land rover from South Africa to Jordan she then moved to Mozambique in 2018 where she started her own backpacker hostel. In her spare time Charlotte worked as a Researcher studying Whale sharks and Manta Rays along the Coast of Mozambique. During 2020-2022 she worked as a Deckhand/Divemaster on superyachts and ice breaker explorer vessels. Her hobbies include scuba-diving, surfing, free-diving and hiking. Being surrounded by the ocean is Charlotte's favourite place to be and she is so excited to have started her first season with Oceanwide in 2022.

Koen Hoekemeijer – Expedition Guide



Koen Hoekemeijer was born in 1974 in The Netherlands. When it comes to nature and wildlife Koen was quite a late bloomer as he had always been more into nightlife and sunny beaches. But that all changed when he discovered his passion for wildlife and photography in 2009 in Costa Rica. It was during this trip that Koen saw his first humpback whales and he fell in love with them instantly. Not only did it make him eager to see more and different types of whales in locations all over the world, but he also wanted to learn to take better photos of these amazing creatures. And with the love for whales

and photography, came a broader passion for all sorts of wildlife.

Since that memorable vacation in 2009, Koen has been travelling the planet to see and photograph the world's most beautiful places. Usually from boats, jeeps or simply face down in the mud, but since 2016 also underwater. Snorkeling in the presence of whales and orcas is bringing Koen pure happiness.

Among his favourite animals are whales, orcas, penguins, tigers and jaguars. But in between safaris, he also likes to do street photography and capture life and portraits of people all over the world.

Koen believes that travelling does not only enrich your life, it also makes you more humble, more appreciative and it provides new levels of perspective and understanding. Koen has won the prestigious WWF Frans Lanting Photo contest, and in 2020 he won the Ellen Fitzgibbon Memorial Photography competition. It's Koen's dream to one day have a Vizsla dog and own a small cabin somewhere in northern Norway surrounded by snow and trees ;).

Aad Wever - Expedition Guide



With parents born in the small “Zuiderzee” villages in West-Friesland, the Netherlands it was only natural that an interest in the Dutch whaling history arose with Aad at an early age. In those days it was still politically correct to deal with whaling in the Dutch curriculum...

The first visit to the Arctic was a 10-day visit to the Norwegian island of Jan Mayen. The bleak volcanic island, the snow storms covering the black lava made a lasting impression, as did the journey back to Bodø in Norway aboard *M/V Lance* in gale force 12.

Svalbard followed quickly. Its history, nature, wildlife but above all the splendid light of the Arctic have produced a great fan of this very special part of the world. This year is Aad’s 12th season at Svalbard. Aad recently retired from teaching at Saxion University of Applied Science in Enschede, The Netherlands.

During this expedition cruise we hope to turn you into fans of the Arctic!

Pelin Asfuroglu – Expedition Guide



Pelin was born and raised in Istanbul, Turkey.

Growing up in a very big city, she was amazed by the stories she read about the adventures of early explorers and mountain climbers who travelled to the most remote places in the world.

She discovered her real passion for great outdoors at age 17 when she first started paragliding.

Thanks to the great extracurricular student activities offered in her University, she ended up spending most of her time paragliding, mountain climbing, caving and sailing. During the long summer holidays, she worked as a trekking/mountain guide in diverse locations throughout Turkey.

Her love of outdoors has taken her so many wonderful places in the world; from the Himalayan Mountains to the Amazon rainforests. Pelin finally settled in Chilean Patagonia in 2013 where she has worked as an outdoor guide leading multi-day hiking and wildlife trips.

Her interest in Polar Regions was kindled when she first travelled to Antarctica. In other words, she caught the Polar Fever.

Pelin holds a Master's degree in History from the University of Leiden. She specially is interested in Polar Exploration history and loves to share her knowledge with the guests.

Marco Rosso – Expedition Guide



Marco was born in the country of Pasta & Pizza. He graduated in Mechanical Engineering at the University of Padua, his native city in Italy and after a few years working in the industry he decided to embark himself on a quest.

For two years he carried his tent and camping equipment, backpacking from the steamy jungle of Mexico and Central America, through the snowy peaks of the Peruvian Andes and the dry highlands of Bolivia; rolling all the way down to the tip of South America.

The raw and powerful beauty of Patagonia convinced him to swap Mother Nature wonders for mankind and machine artifacts.

During the last seven years he has been leading groups as a trekking and camping guide in some of the most beautiful and rugged trails of Patagonia such as Torres del Paine W trek, Paine Massif O Circuit, Fitz Roy and Cerro Torre circuit as well as the southernmost trekking in the world, Dientes de Navarino trail.

One step further from Patagonia lies the Antarctica peninsula, where he is willing to share with you an incredible camping experience in this truly pristine and untouched environment.

Chloé Maréchal - Expedition Guide



Chloé is a passionate diver fascinated by marine life and exploration. She earned a European master degree in Marine biodiversity and conservation and loves to share her expertise for the marine environment. In April 2013, she was selected as the 2013-14 European Rolex our world underwater scholar. She spent a year working side by side with current leaders in underwater fields, getting very different experiences in marine science and in the diving industry. Diving and science are not her only passion; she enjoys exploring new countries and discovering new cultures. She has been diving on all continents

and living in more than 20 countries.

Chloe now lives in northern Norway just above the polar circle. When she is not onboard, she can be found underwater: observing the ocean's inhabitants, searching for forgotten wrecks or mapping and exploring undiscovered underwater cave passages.

Simon Davies - Expedition Guide



Simon is a life-long birder and naturalist and after achieving a Masters degree in Ecology focusing on seabirds he has undertaken a broad range of wildlife related contracts around the world.

His career has predominantly been focused on birds (with the only notable 'blip' coming during a year researching Meerkats in South Africa) during which his focus has ranged from research to conservation to guiding and much in between. Most recently he has been working in Scotland and Sweden studying both breeding birds and migratory species through ringing/banding, a wide range of surveys and other tracking methods.

He is an experienced guide, having led bird and wildlife tours in Australia and many tours, walks and talks in his native UK, enthusiastic about sharing the wide range of seabirds in the colonies he loves.

Among the recent studies he has participated in has included putting geolocators on Black Guillemots in Scotland to find out where they are foraging, fixing satellite transmitters on migratory wading birds in Australia to track their movements as they move up and down the East Asia flyway and affixing geolocators on Great Reed Warblers in Sweden to work out migratory routes.

A large part of his recent work has also been training others in bird ringing/banding and surveying, hopefully inspiring others to a career in research or conservation.

The vast majority of his spare time is also spent birding and wildlife watching and he has undertaken many trips around the world including Australia, Europe, India, Venezuela and the USA, always chasing the next bird!

Meike Sjoer - Expedition Guide



From early on Meike has been a passionate naturalist and traveller who just loves birds.

At the age of 7 she bought her first bird book. Being outdoors all the time, she wanted to learn more about the amazing creatures she encountered. Investigating and learning about nature and wildlife has been a passion ever since.

Meike has a master degree in film and television from the University of Utrecht. For the last 25 years she has been working as a television director. Her stories involve nature, wildlife and environmental topics. If not travelling, she is directing the prime-time wildlife television program *Vroege Vogels*.

When time permits, she volunteers as a nature guide for the Dutch institute for nature and education. As a teenager Meike started sailing the oceans but her true love for the life in the oceans began 14 years ago when she started working with Sea Shepherd on the mediateam.

Meike is thrilled to be your guide on this trip and looking forward to sharing knowledge and the passion for this magical polar world with you.

Paolo Bellezze – Expedition Guide



Born in Argentina (Dec 80') and raised in Italy, Paolo finally moved to Scotland where he settled in 2006. Nowadays, when not at sea, he splits his time between Argentina and Scotland.

Before expedition cruises Paolo spent 12 years working shoreside in merchant shipping. He was a Product Manager for a Norwegian company developing Voyage Planning and Marine Weather Forecasting Systems for merchant ships.

He also started Paragliding at the age of 14 and has been very involved in the sport as a school owner instructing both beginners and advanced courses for over 20 years. When not paragliding, Paolo likes to sea kayak and he mixes Field Guide with Kayak Guide roles onboard.

In 2021 he started working full time in expedition cruises, since then he has guide in several expeditions such as Antarctica, South Georgia, Falklands, Greenland West coast, Greenland East coast, Iceland, Faroes Islands and British Isles.

Aside from sea kayaking and flying he is into hiking, motorbikes and spending time with friends. He is passionate about polar regions and sharing the experience with our guests.

“Happiness is only real when shared” (Chris McCandless)

Languages: English, Spanish, Italian.

Herman Sips - Workshop Guide



Herman was born in the Netherlands where he was educated as a marine biologist at the State University of Groningen. He travelled through the Arctic several times, especially in 2015 when Herman sailed with his sailing yacht Cachalot (a 36 ft cutter-ketch) from the Netherlands all the way north to the edge of the pack-ice. Passing the Lofoten, Bear Island, Spitsbergen, Jan Mayen, Iceland and the Faroe Islands, Herman then encountered many different whale and dolphin species. "It's with whales like birds and fishes: they appear in all kinds of shapes and sizes".

During his sailing trip Herman was especially intrigued by the rare and mysterious Bowhead whale, to which the Dutch has some special historic relationship.

Therefore, back home, Herman started the Icewhale Foundation dedicated to the investigation and protection of the endangered Spitsbergen-Greenland population of Bowhead whales. Only second to the Blue whale, the Bowhead whale is the largest species on earth. However, curiously enough, most people have never heard about this peculiar animal. Even to science there is still a lot to discover about its behavior and its hidden life in the almost inaccessible dynamic ice zone of the Arctic.

One of the challenging aims of our expedition is to search for Bowhead whales along the edge of the pack ice. With all our eyes, binoculars and telephoto lenses combined, we may succeed in discovering them. Let's do it together and learn about the mysterious Bowhead whale!

Ashleigh Kitchiner – Workshop Guide



Ashleigh is a passionate marine biologist and environmental advocate. She is educated formally with a BSc. (Hons) Biology and MRes. Marine Mammal Genetics from the University of Chester, UK. She conducted research utilising stranding data to compile population genetics of long-finned pilot whales (*Globicephala melas*) across the British Isles.

Since university she has been fortunate enough to work in the energy, charity and tourism sectors, working offshore internationally, in various roles. She has previously worked offshore monitoring marine mammal acoustics in real-time and as a consultant where she completed impact assessments for energy projects. During her career she has gained an in-depth understanding of underwater noise, bioacoustics, noise model interpretation and disturbance modelling.

Her main areas of expertise are marine mammal ecology, policy and legislation, impact assessments and acoustics. Ashleigh is a research-driven individual and would like to bring her experience to the Oceanwide team to deliver an informative engaging acoustics workshop.

Evy Broeders – Ship physician



Evy Broeders, 31, is the physician on board. She lives in Amsterdam where she has completed her education after which she gained years of practical experience as an allround doctor on the Emergency department of a regional hospital. She currently works as a physician looking after undocumented immigrants in need of medical aid. On the side she is busy renovating her houseboat: an old fishing vessel from 1905.

In her spare time you can find Evy outside: sailing her ship, spending time in nature and going adventures. Her professional and personal passions come together perfectly on this expedition with Oceanwide Expeditions. This will be her first visit to the Arctic region. She is especially looking forward to the zodiac trips, the hikes on shore and the possibility of spotting the king of the Arctic! So also during the hikes on shore she will be present with the group to offer medical support if needed, but also to share with you in this adventure.

Evy is easily approachable, broadly interested and always up for a chat or a joke. Can't find her in her cabin? Check the kitchen, because she loves good food, cooking and her new hobby is fermenting her homegrown vegetables.

She is looking forward to having a fantastic time with the crew and guests in this beautiful untouched piece of nature. So, don't be afraid to approach her, whether it's about something medical or something completely different: she's happy to talk to you.



DAILY PROGRAM

Arctic Ocean Expedition

Aberdeen - Fair Isle - Jan Mayen - Ice edge – Spitsbergen
Welcome Aboard!

Date: Saturday 3rd June 2023

Day 1: Embarkation – Vlissingen

Please make yourselves at home in your cabins and check you have received all your luggage! Tea/coffee is available in the bar located on Deck 5.

PLEASE LISTEN FOR ANNOUNCEMENTS

17:15+/- **MANDATORY** ship safety briefing, in the Observation Lounge on Deck 5. Attendance to this will be checked.

After the briefing the emergency alarm will be sounded, and you will need to go back to your cabin and get your life jacket.

All guests accommodated on Deck 3 (Cabins 301-337) will go to **MUSTER STATION A** which is the Restaurant on Deck 4

All guests accommodated on decks 4, 6, and 7 (Cabins 401-414, 601-619, 701-714) will go to **MUSTER STATION B** which is the Observation Lounge on Deck 5

18:30+/- The Hotel Manager and Expedition Leader will do a welcome briefing, to orientate you to life on board and explain the plan for the forthcoming days. This will take place in the **Observation Lounge** on Deck 5. This will be followed by Captain's Cocktail and staff introductions.

19:30 Buffet dinner in the **Restaurant** on Deck 4.

21:00 **Agents only** – Introduction to OEX with Florian in the **Lecture Room**.

Please note that tonight we will be sailing into the open sea. Take your seasickness medication before you really feel the movements of the vessel. Make sure that all your belongings are put away safely and that doors and drawers in your cabin are tightly closed. Walk slowly on the ship, always use one hand for yourself and one for the ship and beware of your fingers because of doors slamming!

Daily programmes will be displayed around the ship and on TV screens.

“The world is a book and those who do not travel read only one page” - St. Augustine



Arctic Ocean Expedition

Aberdeen - Fair Isle - Jan Mayen - Ice edge – Spitsbergen

Date: Sunday 4th June 2023

Day 2: At Sea – Heading towards Scotland

- 07:45 Wake up call.
- 08:00-09:00 Breakfast is served in the Restaurant on Deck 4.
- 09:15 **Agents only** - Bridge Tour with Captain Toni Salo and Florian, please meet in the Lecture Room.
- 09:15 For those guests staying with us to Longyearbyen, we will issue you with your muck boots. We will call you Deck by Deck so please listen to announcements and remember to bring your thick socks.
- 10:30 Bill welcomes you to the Observation Lounge for a lecture titled 'Taste of Scotland'.
- 11:30 **Agents only** – Introduction to the OEX Arctic product in the Lecture Room with Adam Turner.
- 12:30-13:30 Buffet lunch is served in the Restaurant on Deck 4.
- 14:00 **Agents only** – Introduction to the OEX Antarctic product in the Lecture Room with Sara Jenner.
- 15:30 Andrew invites you to the Observation Lounge for a presentation about Seabirds of the North Sea.
- 17:00 **Agents only** – Q&A Session with Florian in the Lecture Room.
- 18:15 Daily recap will be in the Observation Lounge on Deck 5.
- 19:00 Plated dinner is served in the Restaurant on Deck 4.
- 20:45 The Expedition Team welcome you to the Lecture Room on Deck 5 for the first of the birding and wildlife recaps, where we will review as a group what has been seen during the day.

"If there is magic on this planet, it is contained in the water, its substance reaches everywhere, it touches the past and prepares the future."- Loren Eisely



Arctic Ocean Expedition

Aberdeen - Fair Isle - Jan Mayen - Ice edge – Spitsbergen

Date: Monday 5th June 2023

Day 3: Aberdeen

Please note the clocks will have gone back 1 hour over night

07:15 Wake up call.

07:30-08:30 Breakfast is served in the Restaurant on Deck 4. You will be able to make a pack lunch to take with you.

08:30+/- **For those continuing to Longyearbyen** with us, we hope to disembark you for your day's excursions in Aberdeen. The exact time will be dependent on when we receive custom clearance, please listen to announcements, and do not approach the gangway before you are called.

For those leaving us in Aberdeen, we ask that you settle your account at reception between 08:00-09:00. If you have any large luggage items that you would like assistance moving, please place it outside your cabin before 09:00am. Please ensure you have vacated your cabin and disembarked no later than 10:00am.

We would like to take this opportunity to thank you for travelling with Oceanwide Expeditions and look forward to welcoming you back onboard in the near future.

16:00 Embarkation of new guests.

All guests must be onboard by 17:00, please DO NOT BE LATE!



DAILY PROGRAM

For those guests who have joined in Aberdeen...

Please make yourselves at home in your cabins and check you have received all your luggage! Tea/coffee is available in the bar located on Deck 5.

- 17:15+/- Ship safety briefing, in the Lecture Room on Deck 5. Attendance to this is **MANDATORY**. The Hotel Manager and Expedition Leader will also do a welcome briefing, to orientate you to life on board and explain the plan for the forthcoming days and you will be introduced to your expedition team.
- After the briefing you will be shown to your muster stations and lead to the lifeboats.
- 19:00 For **all guests** on board we will have daily recap in the Observation Lounge on Deck 5.
- 19:30 Buffet dinner in the Restaurant on Deck 4.
- 20:30 The Expedition team will hand out your rubber boots to the **new guests** on board. You will be called deck-by-deck to Deck 3, so please listen to announcements. Bring your thick socks to find the best-sized boots for you!
- 20:45 The Expedition Team welcome you all to the Lecture Room on Deck 5 for the birding and wildlife recap, where we will review as a group what has been seen during the day and what we should look out for tomorrow.

“A journey is a person in itself, no two are alike and all plans, safeguards, policies and coercion are fruitless. We find after years of struggle that we do not take a trip, a trip takes us.” - John Steinbeck



Arctic Ocean Expedition

Aberdeen - Fair Isle - Jan Mayen - Ice edge – Spitsbergen

Date: Tuesday 6th June 2024

Day 4: Fair Isle

- 06:45 Wake up call.
- 07:00-08:00 Breakfast is served in the Restaurant on Deck 4. You will be able to make a pack lunch to take with you, there will be no lunch served on board today.
- 08:00 **MANDATORY** Zodiac Briefing in the Observation Lounge. Attendance will be checked.
- 08:45+/- We hope to disembark you for your day in Fair Isle. The exact time of disembarkation will be dependent on conditions ashore. We will call you by colour group, **Red** first, **Blue** afterward, please listen to announcements, and do not approach the shell doors on Deck 3 until you are called.
- There will be complimentary tea/coffee and home baked treats available in the village hall/museum, which will be opened between 10:00-12:30.
- 15:00 We will be offering Zodiac shuttles back to the ship from 15:00, the last Zodiac will leave the shore at 17:00, **please do not be late**.
- 18:15 Daily recap in the Observation Lounge on Deck 5.
- 19:00 Plated dinner in the Restaurant on Deck 4.
- 20:45+/- The Expedition Team welcome you to the Lecture Room on Deck 5 for the wildlife review. Please remember to submit your photos on the computer in the Lecture Room, before dinner if you wish them to be reviewed.

*“The difficult is what takes a little time; the impossible is what takes a little longer –
Fridjof Nansen*



Arctic Ocean Expedition

Aberdeen - Fair Isle - Jan Mayen - Ice edge – Spitsbergen

Date: Wednesday 7th June 2023

Day 5: The Norwegian Sea

- 07:45 Wake up call.
- 08:00-09:00 Breakfast is served in the Restaurant on Deck 4.
- 09:15 Koen invites you to the Observation Lounge for lecture titled '10 Top Tips to Improve your Wildlife Photography'.
- 11:30 Paolo welcomes you to the Lecture Room for a presentation titled 'The Impossible Journey – the story of a kayaking Inuit that washed up on the shores of Aberdeen in the 1700's.
- 12:30-13:30 Buffet lunch will be served in the Restaurant on Deck 4.
- 14:00 Antonie welcomes you to the Lecture Room for a presentation about Ocean Waves.
- 16:15 Charlotte invites you to the Observation Lounge for a lecture about the whales we might encounter on this voyage.
- 18:15 Daily recap in the Observation Lounge on Deck 5.
- 19:00 Plated dinner in the Restaurant on Deck 4.
- 20:45+/- The Expedition Team welcome you to the Lecture Room on Deck 5 for the daily wildlife review.

"You can never cross the ocean until you have the courage to lose sight of the shore"
- Christoph Columbus



Arctic Ocean Expedition

Aberdeen - Fair Isle - Jan Mayen - Ice edge – Spitsbergen

Date: Thursday 8th June 2023

Day 6: Crossing the Arctic Circle

- 07:45 Wake up call.
- 08:00-09:00 Breakfast is served in the Restaurant on Deck 4.
- 09:15 Sara invites you to the **MANATORY** AECO and Polar Bear Safety Briefing, this will be in the Observation Lounge, attendance will be checked.
- 11:30 Pelin welcomes you to the Observation Lounge Room for an introductory presentation about the Arctic.
- 12:30-13:30 Buffet lunch will be served in the Restaurant on Deck 4.
- 14:00 Ashleigh invites you to the Lecture Room for a presentation about Underwater Acoustics.
- 16:00 Meike and Aad welcome you to the Observation Lounge for a joint presentation about Jan Mayen – Past and Present.
- 17:00-18:0 **Happy Hour** in the Bar to celebrate Crossing the Arctic Circle! (Half priced drinks!)
- 18:15 Daily recap in the Observation Lounge on Deck 5.
- 19:00 Plated dinner in the Restaurant on Deck 4.
- 20:45+/- The Expedition Team welcome you to the Lecture Room on Deck 5 for the daily wildlife review.

“This we know, the earth does not belong to man, man belongs to the earth. All things are connected like the blood which unites us all. Man did not weave the web of life; he is merely a strand in it. Whatever he does to the web, he does to himself.”
- Chief Sealth



Arctic Ocean Expedition

Aberdeen - Fair Isle - Jan Mayen - Ice edge – Spitsbergen

Date: Friday 9th June 2023

Day 7: Jan Mayen

07:15 Wake up call.

07:30-08:30 Breakfast is served in the Restaurant on Deck 4.

We hope to take you ashore at Jan Mayen, all timings will be subject to weather and swell conditions, so please stand by for announcements, please do not approach the shell doors before you are called. We will call the **BLUE** group first, followed by the **RED** group.

If we are able to land you, it will be a 'wet landing' so please dress in waterproof clothing, top and bottom and with your muck boots. Please bring your passport, if you wish for it to be stamped, please note this is a souvenir stamp, not an official one, therefore could invalidate your passport.

12:30- 13:30 Buffet lunch will be served in the Restaurant on Deck 4.

14:15 Adam invites you to the Lecture Room for a presentation 'The Forgotten Englishman' the story of Benjamin Leigh Smith, Polar-Explorer.

16:15 Chloe invites you to the Observation Lounge for a lecture titled 'Drifting World: The Curious life of Plankton.'

18:15 Daily recap in the Observation Lounge on Deck 5.

19:00 Plated dinner in the Restaurant on Deck 4.

20:45+/- The Expedition Team welcome you to the Lecture Room on Deck 5 for the daily wildlife review.

"It must be remembered that the men whose desires lead them to the untrodden paths of the world have generally marked individuality."

- Sir Ernest Shackleton



Arctic Ocean Expedition

Aberdeen - Fair Isle - Jan Mayen - Ice edge – Spitsbergen

Date: Saturday 10th June 2023

Day 8: At Sea - Ice Edge.

07:45 Wake up call.
08:00-09:00 Breakfast is served in the Restaurant on Deck 4.

We hope to spend the day cruising along the ice edge looking for wildlife, so all timings are subject to change depending on what is spotted. We encourage you to join the Expedition Team on the bridge and outside decks and help them search.

10:00 Marco and Chloe invite you to the Observation Lounge for a joint lecture about Sea Ice.

PLEASE NOTE THE CLOCKS WILL GO FORWARD 1 HOUR AT 12:00

13:00-14:00 Buffet lunch will be served in the Restaurant on Deck 4.

14:15 Herman invites you to the Lecture Room for a presentation titled 'The Mysterious Bowhead Whale'.

18:15 Daily recap in the Observation Lounge on Deck 5.

19:00 Plated dinner in the Restaurant on Deck 4.

20:45+/- The Expedition Team welcome you to the Lecture Room on Deck 5 for the daily wildlife review.

*"An adventure is only an inconvenience rightly considered. An inconvenience is only an adventure wrongly considered."
- G. K. Chesterton*



Arctic Ocean Expedition

Aberdeen - Fair Isle - Jan Mayen - Ice edge – Spitsbergen

Date: Sunday 11th June 2023

Day 9: Ice Edge

07:45 Wake up call.

08:00-09:00 Breakfast is served in the Restaurant on Deck 4.

PLEASE NOTE: The lecture program is subject to change depending on wildlife sightings, so please listen to announcements.

09:15 Sara welcomes you to the Observation Lounge for a presentation about Polar Bears.

11:00 Bill and our Head Chef Ralf invite you to the Observation Lounge for a joint lecture about the M/V Hondius – behind the scenes of how a polar expedition vessel works.

12:30-13:30 Buffet lunch will be served in the Restaurant on Deck 4.

14:00 Ashleigh invites you to the Lecture Room for a presentation about Whale Acoustics.

18:00 Daily recap in the Observation Lounge on Deck 5.

18:30 Dinner will be served.

Please note there will be no wildlife review tonight.

“the ice and the long moonlit polar nights, with all their yearning, seemed like a far-off dream from another world, a dream that has come and passed away. But what would life be without dreams?”

- Fridtjof Nansen



Arctic Ocean Expedition

Aberdeen - Fair Isle - Jan Mayen - Ice edge – Spitsbergen

Date: Monday 12th June 2023

Day 10: Heading towards Spitsbergen

07:45 Wake up call.

08:00-09:00 Breakfast is served in the Restaurant on Deck 4.

We hope to spend the first part of the morning near the ice edge looking for wildlife so please enjoy this time on the outside decks with the team, before we set sail for Spitsbergen.

09:30 Claudio invites you to the Observation Lounge for a lecture about Climate Change.

11:30 Andrew invites you to the Observation Lounge for a presentation titled 'The Strange World of Birders'.

12:30-13:30 Buffet lunch will be served in the Restaurant on Deck 4.

14:00 Marco invites you to the Lecture Room for a presentation about the Geology of Svalbard.

16:15 Simon welcomes you to the Observation Lounge for a presentation about the Breeding Birds of Svalbard.

18:15 Daily recap in the Observation Lounge on Deck 5.

19:00 Plated dinner will be served in the Restaurant on Deck 4.

20:45+/- The Expedition Team welcome you to the Lecture Room on Deck 5 for the final wildlife review of the voyage.

"but who wants to be foretold the weather? It is bad enough when it comes, without our having the misery of knowing about it beforehand."

- Jerome K. Jerome



Arctic Ocean Expedition

Aberdeen - Fair Isle - Jan Mayen - Ice edge – Spitsbergen

Date: Tuesday 13th June 2023

Day 11: Poolepynten and St Johnfjorden

- 06:45 Wake up call.
- 07:00-08:00 Breakfast is served in the Restaurant on Deck 4.
- 07:45 We invite the **RED** group to the shell doors for a landing at Poolepynten.
- 08:15 Charlotte will give a presentation about Walrus in the Lecture Room for the **BLUE** Group.
- 09:15 We invite the **BLUE** group to the shell doors for a landing at Poolepynten.
- 10:30 Charlotte will give a presentation about Walrus in the Lecture Room for the **RED** Group.
- 12:00-13:00 Buffet lunch will be served in the Restaurant on Deck 4.
- 13:15+/- We invite the **BLUE** group to the shell doors for a landing at St Johns fjorden.
- 13:30+/- We invite the **RED** group to the shell doors for a Zodiac Cruise at St Johns fjorden.

GROUPS WILL SWAP DURING THE AFTERNOON.

During the afternoon/evening you can settle your accounts with the Hotel Department, they will announce when they are ready to process payments. We will collect your rubber boots before dinner, please listen for announcements.

- 18:45 Captain's Farewell Cocktails in the Observation Lounge and a viewing of the slideshow, which will be available after dinner in the Lecture Room.
- 19:30 Final Gala Dinner will be served in the Restaurant on Deck 4.

"People do not decide to be extraordinary. They decide to accomplish extraordinary things." - Sir Edmund Hillary



Arctic Ocean Expedition

Aberdeen - Fair Isle - Jan Mayen - Ice edge – Spitsbergen

Date: Wednesday 14th June 2023

Day 12: Longyearbyen

07:45 Wake up call.

Please leave your large luggage in the corridor outside your room for the staff to collect before going to breakfast.

Crew and staff will bring it to the pier, where you will need to personally identify it and bring it your bus.

08:00-09:00 A breakfast buffet is served in the Restaurant on Deck 4.

09:30+/- Please be ready for disembarkation but listen for announcements before approaching the gangway.

Buses will be departing from the quayside to the town.

Thank you all for a wonderful voyage, for your company, good humour, and enthusiasm. We hope to see you again in the future and share more adventures with you.

"it's when you are safe at home that you're having an adventure. When you're having an adventure, you wish you were safe at home." - Thorton Wilder