



Antarctica – Discovery and Learning

Ushuaia – Ushuaia

1st February 2025 – 11th February 2025

On board *M/V Ortelius*



M/V Ortelius was built in 1989 in Gdynia, Poland as a special-purpose research vessel for the Russian Academy of Science. She was originally named “Marina Svetaeva” after a well-known Russian poet. The vessel was purchased by Oceanwide Expeditions in 2011, re-flagged in The Netherlands, and re-named Ortelius. She was extensively re-fitted in 2019 and complies with the latest SOLAS-regulations (Safety Of Life At Sea). *M/V Ortelius* is 91.25 m long, 17.2 m wide and has a maximum draft of 5.4 m. She has ice class UL1 (Equivalent to 1A), 10.5 knots average cruising speed and propulsion is 6 ZL 40/48 SULZER. Ortelius is named after the Dutch cartographer Abraham Ortelius (1527-1598) who published the first modern world atlas, the *Theatrum Orbis Terrarum* (Theatre of the World) in 1570. Her home port is Vlissingen.



Captain Remmert Koster

[Netherlands]

and his international crew of 51

Chief Officer:	Sjoerd van Hoek	[Netherlands]
Second Officer:	Warren Villaneuva	[Philippines]
Third Officer:	Sander Witsenburg	[Netherlands]
Chief Engineer:	Aleksandr Bondarev	[Lithuania]
Second Engineer:	Jhunwel Yuzon	[Philippines]
Hotel Manager:	Volodymyr Cherednychenko	[Ukraine]
Assistant Hotel Manager:	Lilian Van Meurs	[Netherlands]
Head Chef:	Heinz Hacker	[Austria]
Sous Chef:	Norman Estrada	[Ukraine]
Bosun:	Philip Malang	[Philippines]
Bosun:	Lauren Malatag	[Philippines]
Bartender:	Glaiza Loterina	[Philippines]
Ship's doctor:	Elmar Kleimann	[Germany]
Expedition Leader:	Sara Jenner	[United Kingdom]
Assistant Expedition Leader:	Chloé Maréchal	[France]
Expedition Guide:	Carina Ketterer	[Switzerland]
Expedition Guide:	Matilda Ballinger	[Australia]
Expedition Guide:	Simon Davies	[United Kingdom]
Expedition Guide:	Jens Binderup	[Denmark]
Expedition Guide:	Matthias Kopp	[Germany]
Expedition Guide:	Ben Frederiks	[Netherlands]
Expedition Guide:	Koen Jongerling	[Netherlands]
Expedition Guide:	Shan Zhou	[China]
Expedition Guide:	Kana Cheng	[Hongkong]

WE WELCOME YOU ON BOARD!

Day 1 – Saturday 1st February, Ushuaia, Embarkation Day.

16:00 GPS Position: 54°48.6'S / 068°17.8'W

Wind: NW 3 • Sea: Calm • Weather: Sunny • Air temperature: +16°C

The day had finally come! It was time to leave Ushuaia and board the good ship *Ortelius* for our epic expedition. The crew and expedition team had loaded our luggage onboard and delivered it to our cabins earlier in the day. All that remained was for us to take a few photos of *Ortelius*, our home for the next ten days, before heading up the gangway.



We were warmly welcomed by the crew and expedition team who assisted us in finding our cabins. We had some time to explore the ship, get our bearings and grab a coffee in the bar, then it was time to gather in the lecture room for the mandatory ship safety briefing where we met Expedition Leader Sara Jenner, and her team who gave a practical demonstration on how to put on our emergency life jackets.

We were undergoing the abandon ship drill, putting-on our lifejackets and heading outside to be shown to the lifeboats, when we realised that we had already cast-off from the pier and our journey was underway! Following the drill, we assembled in the bar where Captain Remmert welcomed us with champagne and canapés, Hotel Manager Volodymyr talked about the shipboard services, and Sara gave an overview of the voyage and introduced the expedition team.

It was soon time for our first evening meal, with a delicious





buffet selection prepared by Head Chef Heinz and his galley team, served by the friendly dining room staff. After dinner we were called back to the bar so that two more mandatory briefings could be delivered in the sheltered waters of the Beagle Channel. Sara first briefed us on the Antarctic Visitor Guidelines, as laid down by IAATO – the

International Association of Antarctic Tour Operators – of which Oceanwide is a founding member, and this was then followed by the Zodiac safety briefing.

With the formalities out of the way, many of us went onto the outside decks to enjoy what remained of the Beagle Channel, marvelling at the spectacular mountains on either side, seeing big flocks of Black-browed Albatrosses, Imperial Cormorants and South American Terns and some active pods of Dusky Dolphins, wowing us in the perfect evening light.

Day 2 – Sunday 2nd February, At Sea, Drake Passage

12:00 GPS Position: 57°49.1'S / 064°51.8'W

Wind: S force 3-4 • Sea: Calm • Weather: Overcast • Air temperature: +7°C Water T: +10°C

The MV *Ortelius* embarked on its southward journey across the Drake Passage under remarkably calm conditions for this often-tempestuous stretch of the ocean. On the first day of the two-day crossing, guests were treated to a serene voyage characterized by overcast yet bright skies and an unusual absence of the turbulent waves typically associated with this



infamous passage. The morning began with some impressive wildlife sightings, much to the delight of bird enthusiasts and naturalists on board. The tranquil seas provided excellent opportunities to spot a variety of seabirds. Highlights included sightings of several majestic Wandering Albatrosses, their enormous wingspans gliding gracefully over the waters. Grey-headed Albatrosses and Black-browed Albatrosses also made appearances, adding diversity to the sightings. Southern Rockhopper Penguins, with their distinctive crests and energetic movements, were observed as well, drawing the attention of both seasoned birders and casual observers alike.



To enrich the journey, three captivating lectures were offered throughout the day. In the morning, Simon delivered a passionate presentation on the Birds of the Drake Passage. His talk provided fascinating information on the various seabird species encountered in this region and their unique adaptations to life on the open ocean. Later, Koen captivated the audience with an introduction to Antarctic exploration. His lecture delved into the history of daring expeditions, recounting tales of both triumph and tragedy as explorers braved the harsh Antarctic environment. Guests gained a deeper appreciation for the pioneering spirit that has driven human curiosity about this remote and unforgiving continent.

In the afternoon, Chloe presented an engaging lecture on cetaceans of the Southern Ocean. Her talk highlighted the diverse species of whales and dolphins that inhabit these frigid waters, offering insights into their behaviours, conservation challenges, and the critical role they play in the marine ecosystem.



Around lunchtime, a few spells of fog briefly reduced visibility, creating an eerie but picturesque atmosphere over the calm seas. However, the fog lifted by early afternoon, restoring the excellent visibility that had characterized most of the day. The calm waters continued to make for smooth sailing, much to the relief and enjoyment of Oceanwide Expeditions' guests who had prepared (or secretly hoped) for a more tumultuous crossing.

As the day drew to a close, the ship's crew hosted an engaging recap session. Discussions included navigation insights and detailed plans for the second day at sea, ensuring all guests were well-informed and prepared for the continued crossing. These recaps provided an excellent opportunity for guests to reflect on the day's events and ask questions about the voyage ahead. To cap off the evening, all guests were gathered for a special screening of a documentary detailing the discovery of the wreck of Shackleton's legendary ship, *The Endurance*. The film recounted the dramatic expedition to locate the long-lost vessel and captivated the audience with stunning visuals and compelling storytelling. Popcorn was served, adding a touch of cinematic charm to the experience.

As guests retired for the night, anticipation for the second day of the Drake Passage crossing was palpable. With the promise of continued lectures, potential wildlife sightings, and further exploration of this iconic maritime route, spirits remained high aboard the MV *Ortelius*.

Day 3 – Monday 3rd February, At sea, Drake Passage

12:00 GPS Position: 62°44.9'S / 061°54.0'W

Wind: S force 4 • Sea: Moderate • Weather: Bright and sunny • Air T: +2°C Water T: +6°C



On the second day of MV *Ortelius*'s southbound journey across the Drake Passage, guests and crew were treated to remarkably favourable weather. The day was generally bright and sunny, with a brisk headwind that kept temperatures crisp. Despite the headwind, the seas remained unusually smooth for this notoriously unpredictable passage, offering a comfortable and steady ride for all onboard.

The day's wildlife highlight was the mesmerizing sight of a large flock of more than 50 Cape Petrels following the ship for hours. These agile seabirds, with their striking black-and-white plumage, swooped gracefully above the waves, providing guests with countless photo opportunities and moments of wonder. The steady presence of Cape Petrels was complemented by regular sightings of majestic Black-browed Albatross and the hardy, White-chinned Petrels, both effortlessly gliding on the



breeze. Naturalists and wildlife enthusiasts on board were thrilled by these encounters, which offered an exciting glimpse of the diverse birdlife of the Southern Ocean. Spotting these magnificent seabirds against the backdrop of calm seas and clear skies added a sense of tranquillity and connection with the wild Antarctic environment.

The busy lecture programme continued onboard with a morning talk by Ben, who provided an insightful and engaging talk about the Antarctic Convergence and Divergence. This pivotal topic highlighted the importance of oceanographic boundaries in shaping marine ecosystems and influencing weather patterns. Guests learned about how the merging of warmer sub-Antarctic waters with the colder Southern Ocean creates a nutrient-rich environment that supports a vast array of marine life.

Ben's lecture not only enhanced the guests' understanding of these complex systems but also underscored the significance of the region as a dynamic and essential part of the global climate system.



After a hearty lunch, all guests underwent rigorous Antarctic Biosecurity checks in preparation for their highly anticipated arrival on the Antarctic Peninsula the following day. The inspection process was meticulous, ensuring that no foreign biological material, such as seeds or soil, was inadvertently carried ashore. Crew members guided the guests through thorough checks of clothing, boots, and gear to remove any potential contaminants. This essential procedure is part of a concerted effort to protect

the pristine Antarctic environment and maintain its ecological integrity. All guests participated diligently, understanding the importance of their role in safeguarding one of the last untouched wildernesses on Earth.



In the afternoon, Carina delivered a captivating lecture on Ortelius. Her presentation offered fascinating insights into the ship's operations, including navigation, daily logistics, and the crucial role of the engine room in powering the vessel through challenging polar waters. Guests gained a newfound appreciation for the ship's engineering marvels and the skilled crew members who

keep everything running smoothly. Carina's presentation provided a behind-the-scenes look at life onboard, fostering a deeper connection between the travelers and the ship that had already become their temporary home on this remarkable journey.

Mid-afternoon brought a moment of sheer excitement as the South Shetland Islands appeared on the horizon. The snow-capped mountains seemed to float ethereally in the clouds, creating a breathtaking and surreal sight. The sighting of these remote and rugged islands fuelled the growing anticipation among guests for the upcoming landings and exploration activities.

As the day drew to a close, conversations buzzed with excitement about tomorrow's arrival on the Antarctic Peninsula. The combination of smooth sailing, engaging lectures, and stunning wildlife sightings made for a memorable and fulfilling second day at sea. The journey across the Drake Passage was proving to be as enriching as it was adventurous, setting the stage for unforgettable encounters in the icy realms of Antarctica.

Day 4 – Tuesday 4th February, Pléneau Island and Port Charcot

12:00 GPS Position: 65°06.6'S / 064°04.0'W

Wind: SW force 1 • Sea: Glassy • Weather: Bright sunshine • Air T: +1°C Water: +2°C

The first full day of activities aboard the MV *Ortelius* in Antarctica was just spectacular, offering guests an unforgettable introduction to this remote and pristine wilderness. With perfect weather and calm seas, the day was filled with breathtaking scenery, remarkable wildlife encounters, and memorable shore landings.

The day began with an early southward transit through the iconic Lemaire Channel,





often referred to as "Kodak Gap" for its stunning photogenic landscapes. Conditions were ideal, with gorgeous early morning sunshine illuminating towering snow-covered cliffs and massive icebergs. Calm seas enhanced the tranquil beauty of the passage, while sightings of elegant Snow Petrels added a touch of magic

to the journey. Upon reaching Pléneau Island, guests boarded Zodiacs for an exhilarating cruise through the iceberg graveyard. The weather continued to be perfect, with bright sunshine casting a dazzling glow on the ice formations. The calm waters created the ideal setting for wildlife observations, making the morning truly unforgettable.

Seals were the stars of this part of the day, with multiple Leopard Seals spotted both in the water and lounging on ice floes. Their sleek, powerful forms captivated onlookers. Crabeater and Weddell Seals were also plentiful, while a charming juvenile Elephant Seal delighted passengers with its plump, endearing appearance.



Wildlife enthusiasts were thrilled when a couple of lucky Zodiacs scored sightings of a Minke Whale, while others enjoyed the spectacle of a Humpback Whale spotted from the ship. The excitement continued with a visit to the guests' first Gentoo Penguin colony, where many big

chicks were seen waddling around, eliciting smiles and admiration from all.



Despite the morning's success, the afternoon's plans faced an unexpected challenge. Large icebergs blocked the planned transit to Port Charcot, forcing the ship to adjust its course. Instead of heading



directly to the intended landing site, the *Ortelius* had to sail back north through the Lemaire Channel and circle around Booth Island. While this detour was unplanned, it provided additional opportunities for travelers to enjoy the dramatic Antarctic scenery and the ever-changing palette of light on the ice. The ship's crew expertly navigated the

icy waters, ensuring a safe and scenic journey back to the afternoon landing site.

The afternoon activities began with a much-anticipated landing at Port Charcot, a site steeped in history and natural beauty. Guests eagerly disembarked for a welcome leg-stretch and exploration of the area. Among the thousands of Gentoo Penguins, small numbers of both Adélie and Chinstrap Penguins were spotted, adding variety to the avian sightings. The cacophony of penguin calls and the sight of fluffy chicks being fed by their parents provided a fascinating glimpse into the life of these resilient birds. Many guests chose to hike up to the memorial cairn at the top of the island, where panoramic views of the surrounding landscape awaited. The clear weather offered perfect visibility, allowing for stunning photographs and moments of quiet reflection in this remote and majestic setting.

The first full day aboard the MV *Ortelius* set a high bar for the rest of the Antarctic expedition. With perfect weather, incredible wildlife encounters, and unforgettable landscapes, travelers were left in awe of the region's beauty and vitality. The adaptability of the crew in navigating unexpected challenges ensured that everyone had a fulfilling and enriching experience.

As the sun dipped below the horizon, all guests returned to the ship with hearts full of wonder and excitement for the adventures yet to come in this remarkable corner of the world.



Day 5 – Wednesday 5th February, Petermann Island and Argentine Islands

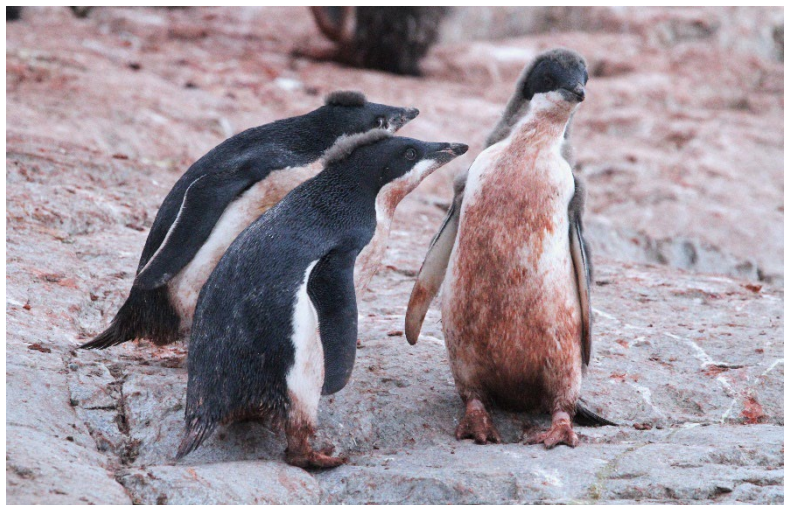
12:00 GPS Position: 65°10.9'S / 064°10.0'W

Wind: NE force 4 • Sea: Moderate • Weather: Overcast • Air T: +2°C • Water T: +1°C



Our second day in Antarctica aboard the MV *Ortelius* was filled with remarkable experiences, dynamic weather, and unforgettable wildlife encounters. As the ship expertly maneuvered through icy waters, the anticipation of new adventures kept spirits high among everyone on board.

We began the day with an exhilarating landing at Petermann Island, a stunning destination known for its breathtaking scenery and abundant wildlife. The approach itself was memorable as we passed through an area dramatically referred to as the "iceberg graveyard," where massive, sculpted icebergs lay grounded in shallow waters, their shapes and hues creating an awe-inspiring landscape. Once ashore, we were treated to the lively spectacle of Adelie penguins with their nearly fully-moulted chicks. The young penguins were highly active, darting across the rocky terrain and energetically chasing their parents for food. This bustling scene captured the essence of the breeding colony at a pivotal time of the season.



Adding a dramatic touch to the spectacle were South Polar Skuas, making regular flyovers in search of any unattended morsels. Their sleek forms and sharp calls reminded us of the dynamic predator-prey interactions playing out across this remote ecosystem.



Meanwhile, the plankton research Zodiac team had an unexpected and thrilling encounter — a close-up sighting of a Humpback Whale. While the original mission was focused on plankton sampling, it's safe to say that the whale stole the show. The massive, graceful creature captivated researchers and passengers alike, offering an unforgettable moment amid the icy waters.

Initially, the weather was overcast but calm, creating a serene atmosphere for exploration. However, by the end of our landing, a chilly wind swept across the island, bringing with it snow flurries that hinted at the challenges still to come.



The afternoon's activities took us to the Argentine Islands, where we embarked on an exciting Zodiac cruise past notable landmarks such as Vernadsky Station and Wordie Hut. These historic sites offered a fascinating glimpse into the region's history and scientific endeavours.

Despite starting in relatively calm conditions, the weather soon mirrored the morning's shift, with brisk winds and persistent snow flurries adding a sense of adventure to the journey. However, the cold was momentarily forgotten as wildlife sightings stole the spotlight.



One of the most impressive highlights was a leopard seal sighting. Known for their sleek, muscular forms and formidable predatory skills, the seal appeared unfazed by our presence, lazily drifting on a patch of ice. We also spotted multiple crabeater seals, which lounged near the water's edge, seemingly indifferent to the chilly conditions.

Equally captivating were the icebergs, which came in an astonishing array of shapes and colors. Deep blues, translucent whites, and intricate patterns on their surfaces added an artistic dimension to the stark polar environment. As we cruised through these icy formations, it was impossible not to feel a profound sense of wonder at nature's artistry.



Despite the increasingly frigid weather, the Zodiac cruise proved to be a highlight of the day. The combination of wildlife encounters, striking ice formations, and the sheer beauty of the Antarctic wilderness kept our spirits high even as temperatures dropped.

Our second day in Antarctica was a testament to the unpredictable and awe-inspiring nature of this remote region. From the vibrant penguin colony at Petermann Island to the dramatic seascapes and wildlife encounters during the Argentine Islands cruise, the day's experiences left an indelible mark. Despite the challenges posed by chilly winds and snow flurries, the spirit of exploration prevailed, fuelled by the remarkable sights and sounds of this frozen wonderland. We eagerly awaited what tomorrow would bring.

Day 6 – Thursday 6th February, Paradise Harbour and Stony Point

12:00 GPS Position: 64°53.9'S / 062°52.2'W

Wind: NW force 0-1 • Sea: Smooth • Weather: Overcast with snow • Air T: +2°C • Water T: +1°C

The morning was a magical blend of calm and wonder as we set off on a Zodiac cruise through Paradise Harbour. Despite the overcast skies and periods of heavy snowfall, the scenery was enchanting. Snowflakes fell softly, creating a dreamy atmosphere as we navigated past Brown Station and into the picturesque Skonthorp Cove.



Wildlife sightings were abundant and captivating. We observed Weddell seals resting peacefully on the land, their sleek forms blending with the icy backdrop. The bustling Gentoo penguin colony around the station was alive with activity, complete with fluttering Snowy Sheathbills and watchful South Polar Skuas. On the cliffs, the Antarctic

Shag colony was a highlight, with many chicks already fledged and energetically swimming in the icy waters.

As we admired the stunning glacier in Skonthorp Cove, a delightful surprise awaited us. The "Party Zodiac" appeared, helmed by Sara and the hotel team, who treated chilly travelers to hot chocolate generously spiked with rum and topped with whipped cream. Spirits were high as we sipped the warm concoction, soaking in the breathtaking views and camaraderie.

After a memorable morning on the water, we landed at Stoney Point, a coastal site that offered a rare and delightful experience. Due to the lack of wildlife at the top, guests were given a unique opportunity to enjoy snow activities typically prohibited for biosecurity reasons. Laughter filled the air as we sat, knelt, and made snow angels on the pristine snow. Snowball fights erupted, with participants dodging and ducking amidst gleeful cheers. The atmosphere was infectious, with everyone revelling in the carefree fun.



The grand finale of the afternoon was the traditional polar plunge. The bravest guests shed their layers and dashed into the frigid Antarctic waters from the beach. The high-pitched squeals and gasps as the icy water hit were both hilarious and awe-inspiring. The sense of accomplishment was palpable as participants wrapped themselves in towels, beaming from the thrill of the plunge.



Just when we thought the day couldn't get any better, the evening meal surpassed all expectations. We gathered for an outdoor BBQ on the helipad at the stern of Ortelius. The backdrop was nothing short of spectacular, with towering icebergs and vast Antarctic landscapes surrounding us. The food was delicious, and the atmosphere was vibrant as we shared stories and laughter over hearty plates. The celebration took on a festive note with impromptu dancing—though some of the moves on display were questionable, they added to the joy of the evening.

As the day came to a close, we reflected on the sheer wonder of our experience. A Zodiac cruise through magical snowfall, wildlife encounters, playful snow activities, and an unforgettable BBQ amidst Antarctica's breathtaking scenery combined to create a day we will treasure forever.



It was a reminder of the incredible beauty and joy that this remote, icy continent offers, leaving us in awe and grateful for every moment.



Day 7 – Friday 7th February, Orne Islands and Cuverville Island

12:00 GPS Position: 64°40.0'S / 062°40.4'W

Wind: SW force 1 • Sea: Slight • Weather: Bright sunshine • Air T: +6°C • Water T: +2°C

Our penultimate day in Antarctica was nothing short of magical, blessed with glorious weather that showcased the pristine beauty of this remote wilderness. The morning dawned clear and calm, with blue skies, warm conditions, and hardly a breath of wind — a rare gift in this often unpredictable environment. It set the stage for an unforgettable day of exploration, wildlife encounters, and awe-inspiring scenery.



The day's adventures began with a landing at the Orne Islands, where the primary objective was to visit the Chinstrap Penguin colony. The sight was extraordinary, with a bustling colony teeming with life. Hundreds of Chinstrap Penguins, many tending to their big, fluffy, grey chicks, created a vibrant scene of activity. Among them were Gentoo Penguins, also nurturing their young. The air was filled with the cacophony of competing calls as parents navigated the chaotic colonies, searching for their chicks. The sheer energy of the penguin colonies offered a rare and intimate glimpse into their lives, making this visit an absolute highlight.

Adding to the morning's excitement, an enormous Elephant Seal lay lazily by the landing site, seemingly unbothered by the human presence. Nearby, several Weddell Seals were spotted lounging on the ice, their sleek forms blending harmoniously with the surroundings. Out in the channel, the waters came alive with the sight of numerous Humpback



Whales. Their majestic movements—arched backs and flicking tails—were mesmerizing, and their presence underscored the incredible richness of Antarctic marine life.



After an unforgettable morning, the afternoon promised yet another incredible experience: a Zodiac cruise around Cuverville Island. The weather remained spectacular, with sunshine illuminating the breathtaking landscape and calm waters reflecting the icy wonders around us. Immense icebergs, some grounded in front of the island, towered like frozen sculptures, their intricate details accentuated by the brilliant

sunlight.

The circumnavigation of Cuverville Island proved to be a wildlife enthusiast's dream. Several Leopard Seals, sleek and formidable, were observed resting on ice floes, their powerful presence a reminder of the Antarctic food chain's apex predators. Weddell Seals were seen in good numbers, adding to the diversity of marine mammals encountered. For one particularly fortunate Zodiac group, the moment of the day came when a Humpback Whale breached spectacularly right next to their small boat. The sheer power and grace of this massive creature emerging from the water left everyone speechless, a memory to be cherished forever.



As the day transitioned to evening, the wonders continued. The incredible weather persisted, treating us to a serene and unforgettable journey northward through the Gerlache Strait. The long transit toward tomorrow's destination was punctuated by the presence of Humpback Whales feeding all around. Wherever we looked, there were signs of life—spouts of water breaking the surface, tails gracefully slicing through the waves, and the occasional breach, adding drama to the tranquil scene. The Gerlache Strait, with its dramatic mountain peaks, glacial vistas, and shimmering waters, served as the perfect backdrop for our voyage. The combination of remarkable wildlife sightings and the ethereal

beauty of the landscape created a fitting conclusion to a day that epitomized the wonder and majesty of Antarctica.



This day in Antarctica will forever stand out as a highlight of the expedition. The perfect weather, extraordinary wildlife encounters, and moments of quiet reflection amidst unparalleled natural beauty came together to create an experience that felt almost otherworldly. As we sailed northward, spirits were high, and conversations buzzed with

excitement and gratitude for the privilege of witnessing such wonders. Tomorrow's journey promises more adventures, but it will be hard to top the magic of this penultimate day. Antarctica, in all its wild splendour, has left an indelible mark on our hearts.



Day 8 – Saturday 8th February, Deception Island and Hannah Point

12:00 GPS Position: 62°57.3'S / 060°38.1'W

Wind: W force 4-5 • Sea: Moderate • Weather: Overcast • Air T: +3°C • Water T: +2°C

Our last day of operations in Antarctica was a fittingly dramatic and memorable conclusion to a remarkable expedition. The day began with an early start as the *Ortelius* entered the Deception Island caldera through Neptune's Bellows at 6:30 a.m. The atmosphere was both eerie and awe-inspiring, with overcast skies and a thin veil of mist clinging to the island's highest peaks, amplifying the sense of

entering an active volcano that is long overdue for an eruption.



The bustling Chinstrap Penguin colony near the entrance barely commanded attention as passengers focused on the breathtaking passage through the narrow entrance flanked by towering rock formations. The ship navigated deeper

into the caldera, heading to our landing site at Telefon Bay.

Upon disembarking onto the stark black sand beach, we embarked on a hike up and around an impressive crater rim within the caldera. Initially, the weather was cooperative, providing clear views of the volcanic landscape. However, halfway through the landing, conditions began to deteriorate rapidly. The wind intensified, making it difficult to maintain footing at the highest points of the hike, and a steady rain set in toward the end. Despite the challenging weather, the vast majority of



passengers demonstrated remarkable resilience, completing the circular route around the crater rim. Their determination was rewarded with much-deserved hot drinks back on board the ship.

As we sailed back out through Neptune's Bellows, Jens introduced a short but fascinating video about the last eruption of Deception Island. While there was a collective sense of relief that the island's overdue eruption had not occurred during our visit, there was also a hint of wistfulness that we had missed witnessing such a dramatic geological event.

Our journey continued north to our final afternoon destination at Hannah Point on Livingston Island. Unfortunately, the weather forecast was grim, and this time, it proved accurate. Gale-force winds of 40 knots and heavy seas made it impossible to conduct any operations off the ship. Although a few staff members lowered a



Zodiac to test the conditions, it became clear that it was too rough to safely disembark the guests. As a result, the Gentoo Penguins and Elephant Seals could only be observed from a distance.

Despite the disappointment, the afternoon onboard offered an educational and engaging alternative. Simon delivered an insightful presentation, recapping the various bird species encountered during the trip, with a particular focus on penguins and interesting facts about the Snowy Sheathbill. His talk was a delightful reminder of the diverse and fascinating wildlife we had been privileged to observe during our Antarctic adventure.

With two days of crossing the notoriously unpredictable Drake Passage ahead, the day concluded with the now-familiar routine of the daily recap. Sara provided an update on the weather forecast and outlined plans for the following day. This was followed by a satisfying meal and a chance for travelers to relax in the bar, sharing reflections on the incredible journey we had all experienced.

Our last day in Antarctica encapsulated the spirit of the entire expedition — filled with awe-inspiring landscapes, unpredictable weather, and a sense of camaraderie among guests and crew. As the *Ortelius* sailed northward, we carried with us indelible memories of a truly extraordinary adventure at the bottom of the world.

Day 9 – Sunday 9th February, At sea, Drake Passage

12:00 GPS Position: 60°22.4'S / 064°12.7'W

Wind: NW force 4 • Sea: Moderate • Weather: Bright sunshine • Air T: +4°C • Water T: +4°C

After our unforgettable expedition to Antarctica, we began our journey northward across the infamous Drake Passage. Fortunately, the weather was remarkably kind for this notoriously turbulent stretch of water. The day unfolded under bright sunshine, with a steady westerly breeze and manageable swells ranging between 2 to 3 meters. Given the Drake's reputation for ferocious storms and towering waves, these conditions were as close to ideal as one could hope for.



The open ocean offered a mesmerizing yet tranquil landscape. The wildlife sightings were modest but still enchanting. Black-browed Albatrosses glided gracefully over the waves; their distinctive dark eyebrows highlighted by the sun. We were also treated to glimpses of a couple of Grey-headed Albatrosses and a few Soft-plumaged Petrels skimming the surface of the deep blue waters. Though not the most prolific day for wildlife spotting, the occasional bird sightings provided

delightful moments of connection with the vastness around us.

Onboard, the lecture program filled the day with fascinating stories and knowledge. Jens captivated us with a riveting account of the legendary race to the South Pole between Robert Falcon Scott and Roald Amundsen. His vivid storytelling brought to life the fierce competition, harsh conditions, and triumphs of this historic endeavour.



Later, Matilda shared her experiences of living and working at Scott Base in Antarctica. Her tales of daily life in one of the most remote and extreme environments on Earth were both insightful and inspiring. She painted a vivid picture of the challenges and rewards of scientific work on the frozen continent.

The highlight of the lecture series, however, was Chloe's passionate presentation about the remarkable world of plankton. Her enthusiasm was infectious as she described the critical role these microscopic organisms play in the marine ecosystem. Chloe's talk sparked a newfound appreciation for the hidden life forms that thrive beneath the surface of the ocean, making us all realize the interconnectedness of the planet's ecosystems.

Between lectures and wildlife sightings, the day was filled with moments of quiet reflection. Gazing at the vast expanse of the deep blue ocean, many of us found ourselves reminiscing about the extraordinary experiences we had in Antarctica. The pristine landscapes, the awe-inspiring wildlife, and the sheer beauty of the ice-covered world lingered in our thoughts. As we sailed northward, there was a palpable sense of gratitude for the journey we had been privileged to undertake and a tinge of excitement for what lay ahead.



As the sun dipped lower on the horizon, casting a golden glow across the waves, we remained on deck, captivated by the tranquil beauty of the Drake Passage. It was a lazy, peaceful day—a perfect contrast to the thrilling adventures of our Antarctic expedition and a gentle transition back toward civilization.

Day 10 – Monday 10th February, At sea, Drake Passage

12:00 GPS Position: 55°55.5'S / 066°06.5'W

Wind: W force 4 • Sea: Slight • Weather: Overcast • Air T: +7°C • Water T: +6°C



Our second day heading north across the Drake Passage brought calmer seas and steady progress toward Ushuaia. Despite overcast skies and occasional light rain, the voyage was smooth and mercifully free from the notorious turbulence often associated with this stretch of ocean. Nature offered a captivating display, making up for the muted weather. Birdlife increased noticeably compared to the previous day, with spectacular sightings of Southern Royal Albatross and Snowy Albatross gracefully gliding alongside the

ship. Additionally, large flocks of Sooty Shearwaters and agile Wilson's Petrels danced just above the water, creating a mesmerizing scene as they darted and skimmed the ocean surface in front of the vessel.

By mid-morning, the South American coastline came into view, marking a significant milestone on our journey. The sight of land brought a renewed sense of anticipation as guests caught their first glimpse of Ushuaia, our final destination. The distant mountains framed by mist added an element of drama to the horizon, heightening the excitement on board.

The day's lecture programme offered insightful presentations that captivated both seasoned explorers and first-time adventurers. Carina opened the series with a fascinating talk on the lifecycle of icebergs. She delved into their creation, their vast journeys across the ocean, and their eventual demise. The audience gained a deeper appreciation for the challenges of tracking these frozen giants and the implications of their movements.

Following Carina's session, Koen delivered a compelling lecture on the importance of sea ice. His talk highlighted how crucial sea ice is for the survival of polar wildlife and the broader impact it has on human communities and the global climate. The final presentation was led by Sara, who provided an engaging overview of Oceanwide's extensive travel destinations.



From pole to pole and numerous breathtaking locations in between, her talk fuelled excitement and inspired future voyages.

In the late afternoon, we entered the scenic Beagle Channel, marking the final stretch of our journey. The atmosphere aboard became more celebratory as travelers anticipated their return to Ushuaia and reflected on the incredible experiences shared during the expedition.

The evening brought unexpected excitement as the ship anchored off the Chilean town of Puerto Williams. A helicopter, along with its pilot and engineering crew, was welcomed aboard in preparation for MV *Ortelius's* next daring expedition. The operation was executed seamlessly, adding a touch of adventure to the day's close.



As the ship resumed its journey, we sailed through the night, ultimately arriving back in Ushuaia in the

small hours of the morning. The voyage across the Drake Passage, renowned for its unpredictable conditions, had treated us kindly, allowing for a smooth and memorable return to South America. This day was a perfect blend of natural beauty, engaging educational sessions, and moments of genuine excitement, setting the tone for our final hours aboard the *MV Ortelius*.

Day 11 – Tuesday 10th February, Ushuaia, disembarkation day

08:00 GPS Position: 54°48.6'S / 068°17.9'W

Wind: NW force 3 • Sea: Calm • Weather: Clear • Air T: +8°C • Water T: +6°C

We woke up in the harbour of Ushuaia early morning. It was a calm morning with surrounding mountains covered by a thin layer of clouds.

The crew and Expedition Team handled all the luggage and placed it on the pier, while we enjoyed one last buffet breakfast. At 08:30 it was time to leave the ship, the voyage over, and time to go our separate ways. Fond farewells were exchanged on the dock, as our band of intrepid adventurers dispersed and began the long journey home. For some of us, it was just the beginning of the next chapter in our own personal travel story.

Total distance sailed on our voyage: 1,647 nautical miles.
Southernmost position: 65°14.45'S / 064°15.2'W (Vernadsky Station).

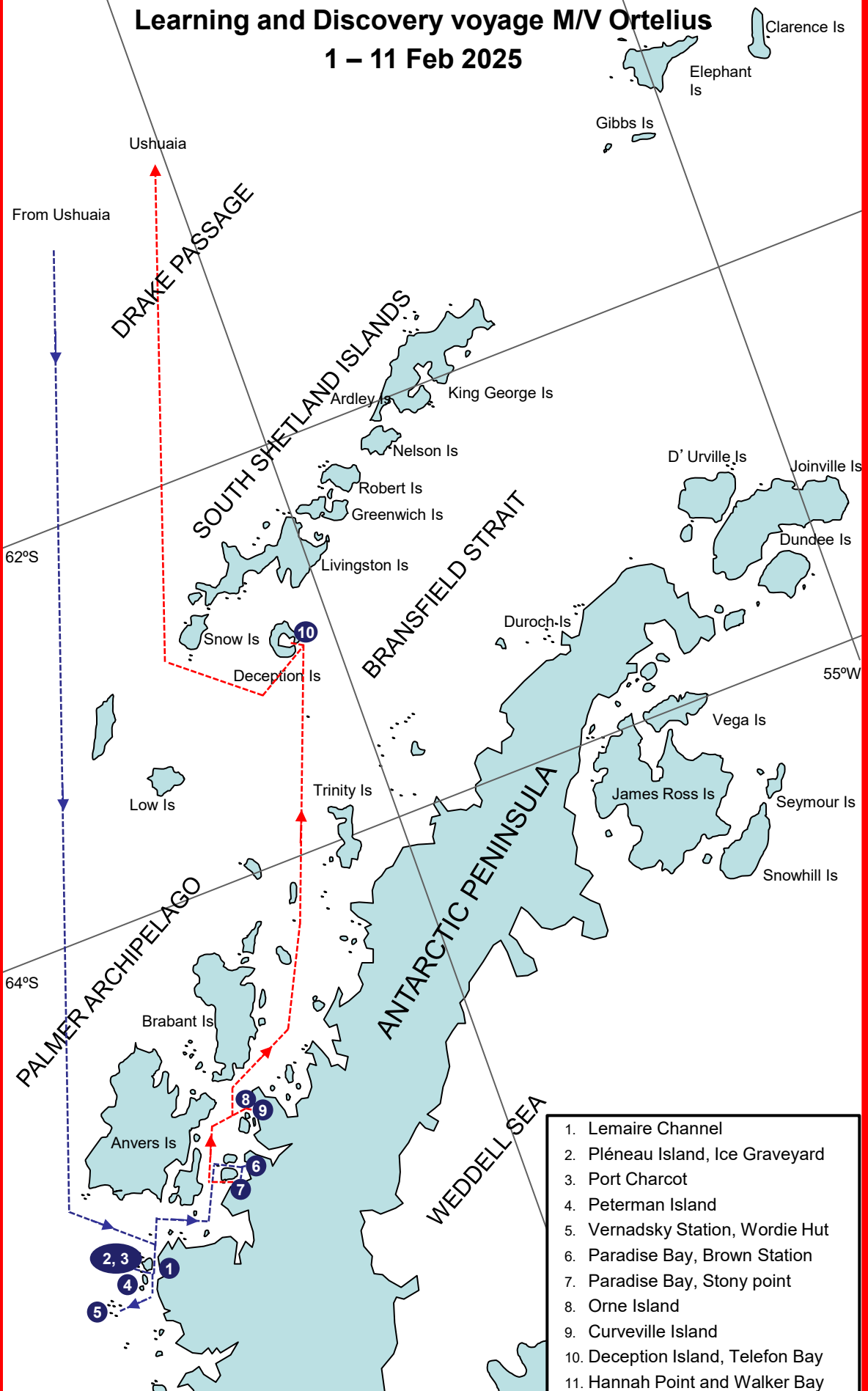
On behalf of Oceanwide Expeditions, Captain Remmert Koster, Expedition Leader Sara Jenner, Hotel Manager Volodymyr Cherednychenko and all the crew and staff of *M/V Ortelius*, it has been a pleasure travelling with you!

Your Oceanwide Expeditions Team



Learning and Discovery voyage M/V Ortelius

1 – 11 Feb 2025



Birds and Marine Mammals of the Antarctic region

Ortelius: Antarctica - Discovery and learning voyage 1st February 2025 - 11th February 2025

English	Latin	中文	German	1-Feb	2-Feb	3-Feb	4-Feb	5-Feb	6-Feb	7-Feb	8-Feb	9-Feb	10-Feb
Emperor Penguin	<i>Aptenodytes forsteri</i>	帝企鹅	Kaiserpinguin										
King Penguin	<i>Aptenodytes patagonicus</i>	王企鹅	Königspinguin										
Adélie Penguin	<i>Pygoscelis adeliae</i>	阿德利企鹅	Adéliepinguin				X	X					
Gentoo Penguin	<i>Pygoscelis papua papua</i>	金图企鹅/巴布亚企鹅	Eselspinguin		X		X	X	X	X	X		
Chinstrap Penguin	<i>Pygoscelis antarctica</i>	帽带企鹅	Kehlstreifpinguin				X			X	X		
Macaroni Penguin	<i>Eudyptes chrysolophus</i>	马可罗尼企鹅	Goldschopfpinguin										
Magellanic Penguin	<i>Spheniscus magellanicus</i>	麦哲伦企鹅	Magellanpinguin	X									X
Wandering Albatross	<i>Diomedea exulans</i>	漂泊信天翁	Wanderalbatros									X	X
Northern Royal Albatross	<i>Diomedea sanfordi</i>	北部皇家信天翁	Nördlicher Königsalbatros										
Southern Royal Albatross	<i>Diomedea epomophora</i>	南部皇家信天翁	Königsalbatros										X
Black-browed Albatross	<i>Diomedea melanophris</i>	黑眉信天翁	Schwarzbrauenalbatros	X	X	X					X	X	X
Grey-Headed Albatross	<i>Diomedea chrysostoma</i>	灰头信天翁	Graukopfalbatros		X	X					X	X	
Light-Mantled Sooty	<i>Phaebetria palpebrata</i>	灰背信天翁	Graumantel-Rußalbatros		X								
Northern Giant-Petrel	<i>Macronectes halli</i>	北部巨鹱	Nördlicher Riesensturmvogel										
Southern Giant-Petrel	<i>Macronectes giganteus</i>	南部巨鹱	Südlicher Riesensturmvogel	X	X	X	X	X	X	X	X	X	X
Southern Fulmar	<i>Fulmarus glacialoides</i>	南部暴风鹱	Silberssturmvogel										
Cape Petrel (Pintado)	<i>Daption capensis</i>	花斑鹱/海角鹱	Kapsturmvogel		X				X	X	X		
Antarctic Petrel	<i>Thalassoica antarctica</i>	南极鹱	Weißflügelsturmvogel										
Snow Petrel	<i>Pagodroma nivea</i>	雪鹱	Schneesturmvogel				X						
Blue Petrel	<i>Halobaena caerulea</i>	蓝鹱	Blausturmvogel		X	X						X	
White-chinned Petrel	<i>Procellaria aequinoctialis</i>	白颊风鹱	Weißkinnsturmvogel		X	X						X	X
Soft-Plumaged Petrel	<i>Pterodroma mollis</i>	柔羽圆尾鹱	Weichfedersturmvogel		X	X						X	X
Great-winged Petrel	<i>Pterodroma macroptera</i>	大翅海燕	Langflügel-Sturmvogel										
Atlantic Petrel	<i>Pterodroma incerta</i>	大西洋圆尾鹱	Schlegelsturmvogel										
Sooty Shearwater	<i>Puffinus griseus</i>	灰鹱	Dunkelsturmtaucher	X		X							X
Great Shearwater	<i>Puffinus gravis</i>	大水剃鸟	Großer Sturmtaucher	X									X
Antarctic Prion	<i>Pachyptila desolata</i>	鸽锯鹱	Taubensturmvogel		X	X						X	
Fairy Prion	<i>Pachyptila turtur</i>	仙锯鹱	Feensturmvogel										
Slender-billed Prion	<i>Pachyptila belcheri</i>	细嘴锯鹱	Belcher-Sturmvogel										
Wilson's Storm-Petrel	<i>Oceanites oceanicus</i>	黄蹼洋海燕	Buntfußsturmschwalbe		X	X	X	X	X	X	X		X
Black-bellied Storm-Petrel	<i>Fregetta tropica</i>	黑腹洋海燕	Schwarzbauchmeerläufer			X							
Grey-backed Storm-Petrel	<i>Oceanites nereis</i>	灰背洋海燕	Graurücken-Sturmschwalbe										
Common Diving-Petrel	<i>Pelecanoides (urinatrix)</i>	鹈燕	Lummensturmvogel										
Magellanic Diving-Petrel	<i>Pelecanoides magellani</i>	麦哲伦鹈燕	Magellan-Lummensturmvogel										
Imperial (Blue Eyed) Shag	<i>Phalacrocorax atriceps</i>	蓝眼鸬鹚	Blauaugenscharbe	X									X
Antarctic Shag	<i>Phalacrocorax bransfieldensis</i>	南极鸬鹚	Antarktikscharbe				X	X	X	X	X		
Snowy (Pale-faced) Shearbill	<i>Chionis alba</i>	白面鞘嘴鸥	Weißgesicht-Scheidenschnabel				X	X	X	X			
Chilean Skua	<i>Catharacta chilensis</i>	智利贼鸥	Chileskua	X									X
South Polar Skua	<i>Catharacta maccormicki</i>	南极贼鸥	Südpolarskua			X	X	X	X	X	X		
Sub-Antarctic (Brown) Skua	<i>Catharacta lonnbergi</i>	棕贼鸥	Braune Skua (Subantarktiskua)					X					
Dolphin Gull	<i>Larus scoresbii</i>	豚鸥	Blutschnabelmöwe	X									X
Kelp Gull	<i>Larus dominicanus</i>	黑背鸥	Dominikanermöwe	X			X	X		X	X		X
South American Tern	<i>Sterna hirundinacea</i>	南美燕鸥	Falklandseeschwalbe	X									X
Antarctic Tern	<i>Sterna vittata</i>	南极燕鸥	Antarktiseseeschwalbe (Antipoden-)				X	X	X	X	X		
Arctic tern	<i>Sterna paradisaea</i>	北极燕鸥	Küstenseeschwalbe										

[illegible]

Sara Jenner – Expedition Leader



For as long as Sara could remember she has had a passion for travel and searching for the wildest and most remote places on earth.

Back in the UK when she was only 10, she remembers trading in her favourite pink bicycle for the money to start her travel fund. Every birthday and Christmas she added a little more in the kitty and finally, at 18 she realised her dream of diving at the Great Barrier Reef! At that point the travel addiction was born. Ever since Sara has been travelling the globe in search of wild and remote places and has spent many

months volunteering on wildlife conservation projects in a bid to help some of our most iconic and endangered species.

Sara's love of wildlife and the great outdoors has taken her to all seven continents, and she has travelled extensively in the polar regions including the Antarctic Peninsula, Weddell Sea, Ross Sea, Falklands, South Georgia, NZ and Australian Sub Antarctic Islands, Spitsbergen, Greenland, Iceland, Baffin Island and Canadian High Arctic. Returning to the UK, Sara used this knowledge to work in the travel industry as a polar specialist for several years, until the travel bug hit again, when she decided to swap life on the land for a life at sea and joined the Oceanwide Expedition Team in 2016.

During 2020-2021 she worked extensively on a leopard seal identification project and took the opportunity to fulfil a lifetime dream of visiting South Georgia in winter by working on the M/V Pharos, which is deployed by the South Georgia Government as a fishery patrol vessel.

Sara is a keen wildlife photographer and when she is not wrapped up warm in the polar regions she enjoys working as a photographic guide in Botswana, on the beautiful Chobe River and Okavango Delta, so really has a life of two halves.

Chloé Maréchal – Asst.Exp. Leader



Chloé is a dedicated diver with an insatiable passion for marine life and exploration. Armed with a European master's degree in Marine Biodiversity and Conservation, she's on a mission to share her expertise and promote the conservation of the marine environment. But here's the twist—while everyone else is busy oohing and aahing over flashy dolphins and majestic whales, Chloé's heart belongs to the unsung heroes of the ocean—the often underrated world of plankton and the mysteries of unseen microbes. She's here to show that even the tiniest organisms can have big personalities!

In April 2013, Chloé's dedication and skills were recognized when she was chosen as the prestigious 2013-14 European Rolex Our World Underwater Scholar. This remarkable opportunity allowed her to work alongside renowned leaders in the fields of marine science and diving industry, providing her with diverse experiences and invaluable insights. During this transformative year, her first encounter with Antarctica left an indelible mark, igniting a lifelong passion for polar exploration.

Chloé isn't just a science nerd with a thing for plankton. She's an adventurous soul with an insatiable curiosity. She's dived across all continents, lived in 20 countries, and now sails on her 12-meter aluminum boat. Together with her partner she has recently crossed the challenging waters of the North Sea.

Currently, Chloé calls northern Norway her home, residing just above the polar circle. When not guiding, she explores underwater wonders, uncovers forgotten wrecks, and maps uncharted underwater caves. Her passion for the ocean, sailing, and work with Oceanwide Expeditions fuel her relentless pursuit of adventure.

Carina Ketterer – Expedition Guide



This is Carina, she grew up in the Swiss capital of Bern far away from the sea. Her studies in renewable energies and environmental engineering gave her a curiosity in energy production and civil engineering. She would like to share this curiosity with you! Carina is a sports nut and runs triathlons in her spare time. But don't worry, she has vowed to slow down the tours to half-tempo.

Carinas favorite animal since childhood, was the penguin. In 2019 she finally hopped on a boat to the Antarctic to see them in their natural habitat. That journey bore in her a new fascination

with these cute animals and their dominion.

Being the happiest outside, Carina chose to make the world her workplace and to become an international guide for Oceanwide Expeditions.

Carina is a passionate and optimistic person who always likes to learn new things and has a broad interest in geography, history, archaeology, the arts and the natural sciences. As the cheesy Instagram posts say: "The journey of a thousand miles begins with a single step". So step up and let Carina share her passion for civil engineering and penguins with you and take part in your once in a lifetime adventure!

Matilda Ballinger – Expedition Guide



Matilda is an Earth Science lecturer with a passion for Antarctica. Matilda has a Masters of Marine and Antarctic Science from the University of Tasmania, with a focus on Antarctica geology and glaciology. She has contributed to a number of Antarctic research studies, including producing a continent wide geological map of Antarctica and looking at glacial flow over different geology. She has presented at Antarctic and Polar conferences and loves sharing her knowledge of Antarctica.

Matilda has been lucky enough to come to Antarctica numerous times, both as a guide and working at the New Zealand Scientific Research Station, Scott Base where she lived and worked for 5 months. Her favourite part about Antarctica is the scenery and she loves sharing her love for Antarctica with others, in the hope that we can all become Antarctic ambassadors and protect Antarctica for generations to come.

Matilda grew up travelling around the world on her family's sailing yacht, developing a love for the marine environment from a very young age. When not guiding in Antarctica she loves surfing, skiing, hiking, biking and being out in nature. When not sharing her love for glaciers and ice with visitors to Antarctica, Matilda is lucky enough to enjoy the glaciers of New Zealand from her backyard in Mt Cook Village.

Simon Davies – Expedition Guide



Simon is a life-long birder and naturalist and after achieving a Masters degree in Ecology focusing on seabirds he has undertaken a broad range of wildlife related contracts around the world.

His career has predominantly been focused on birds (with the only notable 'blip' coming during a year researching Meerkats in South Africa) during which his focus has ranged from research to conservation to guiding and much in between. Most recently he has been working in Scotland and Sweden studying both breeding birds and migratory species through

ringing/banding, a wide range of surveys and other tracking methods.

He is an experienced guide, having led bird and wildlife tours in Australia and many tours, walks and talks in his native UK, enthusiastic about sharing the wide range of seabirds in the colonies he loves.

Among the recent studies he has participated in has included putting geolocators on Black Guillemots in Scotland to find out where they are foraging, fixing satellite transmitters on migratory wading birds in Australia to track their movements as they move up and down the East Asia flyway and affixing geolocators on Great Reed Warblers in Sweden to work out migratory routes.

A large part of his recent work has also been training others in bird ringing/banding and surveying, hopefully inspiring others to a career in research or conservation.

The vast majority of his spare time is also spent birding and wildlife watching and he has undertaken many trips around the world including Australia, Europe, India, Venezuela and the USA, always chasing the next bird!

Jens Binderup – Expedition Guide



Born on a farm in central Denmark, later working as an air traffic controller in Copenhagen for many years, now living near the coastline on the countryside south of the capital.

A keen interest in wildlife has been a lifelong companion, and the majority of travelling through the years has been to all 7 continents, where animal life- and behaviour was the main focus.

Whether it was swimming with the orcas in northern Norway, dogsledding in Finland, experiencing the abundance of wildlife in southern Africa or enjoying the magnificence of landscapes and animal

life in the Arctic and Antarctica.

Jens is a sociable and talkative person, loving to share all the experiences with our guests – and his enthusiasm has made him guiding friends and colleagues on several occasions.

He also possesses a deep interest in the polar expeditions – both to the Arctic and Antarctic – made by the brave men a hundred years ago, exploring the last frontiers by ships, planes, airships and dogsleds.

When not travelling, spare time is used enjoying the massive migration of birds of prey near his home, mountain biking, trekking in the Scandinavian wilderness and flying gliders together with all the predatory birds.

Fulfilling a lifelong dream of being an expedition guide, Jens is looking forward to his first season in the Antarctic with passion and enthusiasm, sharing the magnificent experiences that await all on an expedition cruise.

Matthias Kopp – Expedition Guide



Matthias lives most of the year in Thuringia/ Germany. After school he started an apprenticeship to become a wholesale dealer but decided after a couple of years to settle into work right next to the home village.

He started studying biology at the University in Jena. Matthias' main interests were Ecology and Ornithology. He wrote a diploma thesis about the breeding biology of Antarctic Skuas in the Antarctic Peninsula but also after that degree, Matthias kept on studying those impressive animals for a couple of years. While studying, both his interest

and his network brought Matthias all over the world. Most impressive for him were the polar regions. This led to Matthias staying for his studies with the Skuas for a total of 5 summer seasons in Antarctic bases, as well as 10 seasons in the high Arctic as a tour guide onboard different vessels.

Currently Matthias is predominantly settled, based again in the village of his childhood, but now with wife, three young girls, two cats, a couple of bee colonies and a wide-ranging garden, who all need him. However, his wife knows that for Matthias the high summer in Germany is much too warm. For that reason, he is together with you in the polar regions.

Ben Frederiks – Expedition Guide



Discovering Spitsbergen in 2013 was like a dream coming true for Ben. During his studies in marine biology, he conducted fieldwork which took him to the world's most Northern settlement: Ny-Ålesund. Here he fell in love with the Arctic Archipelago, he has been returning to the Arctic ever since.

In the past, Ben worked on different scientific topics: Arctic shipping and the effect of oil spills in Arctic Regions. A topic with an increasing importance due to the rising levels of shipping activity in the northern waters.

Besides the topics mentioned above he is very interested in the northern history such as the old whalers and the age of explorers, do not be shy to ask anything about it!

His main topics are in the fields of polar biology, ecology, and history. This makes these remote regions a perfect place for him to work, because it is filled with all of it!

Back home in the Netherlands Ben does something completely different. Since his university graduation he used to work as an offshore hydrographer for the Dutch government, surveying shipwrecks and underwater structures. Currently Ben works for the Netherlands coast guard as mission commander on the patrol aircraft, flying daily over the North Sea.

Whenever he has a few weeks off, he tries to travel back to the North. He has surely been bitten by the polar bug and can't wait to start another polar adventure! On a last note: Ben speaks English, German and Dutch.

Koen Jongerling - Expedition Guide



Having grown up in the Netherlands Koen always knew he wanted to live in a more rugged landscape than the rather flat lowlands that surrounded him. That is why after finishing his outdoor education in 2011, he chose to move to Patagonia, Chile to find the mountains he was longing for.

Combining his love for nature and the desire to learn more, he started guiding expeditions through the mountain ranges of Patagonia. Travelling back and forth to Europe for additional mountain courses - every time feeling more at home in the rough conditions of

Patagonia. In 2017 he started his own guide company, introducing travellers to the beauty of Southern Chile.

Living in Puerto Natales he came to love the cold and extreme weather and after years of working in one of the most southern mountain ranges in the world, he could not stop looking further south to the great white continent, Antarctica.

He started to work in Antarctica in 2018 working as a camping and snowshoe guide. An area where he felt very comfortable. Teaching people about the incredible stories that have been written in Antarctica and trying to explain the importance of this magical place by interactive learning. With lots of enthusiasm and passion he will show you that every day is a new adventure with many surprises as long as you do your part and be outside as much you can.

Shan Zhou - Expedition Guide



Shan is an environmental educator from China, born and raised in Lu'an Anhui. She has deep passion for exploring different cultures and landscapes, and she has had the opportunity to travel extensively to various parts of the world by herself.

Since 2021, she has worked on conservation projects in Northeast Tiger and Leopard National Park and Giant panda National Park such as restoration of giant panda habitats, wildlife monitoring and environmental education.

With a diverse background, Shan has served as an outdoor leader in Giant Panda National Park in Sichuan. Also, she has worked on the Great Barrier Reef Cruise in Cairns, Australia, gaining extensive sailing experience.

Her academic achievements include both a bachelor's and master's degree in Ecotourism and sustainable tourism, underscoring her deep-rooted knowledge and expertise in the industry.

In her spare time, she loves exploring nature through climbing, hiking, diving and capturing the beauty of the natural world with her camera. Driven by her curiosity and wanderlust, Shan continues to seek out new experiences and destinations, embodying a true spirit of adventure in both her personal and professional life.

Kana Cheng - Expedition Guide



Kana, with a Chinese name, Yu Kan, pronounced as "You Can," means "creating value in the universe" in Chinese. This belief shapes her perspective that life is about finding meaning, instilling in her a positive attitude that you can achieve anything in life. Kana was born and raised in Hong Kong; a city famous for its towering skyscrapers. But actually, Hong Kong also has stunning coastal and mountain landscapes.

After earning her degree in accounting and working in an office, Kana realized her passion for nature and adventure surpassed her interest in an office job. Seeing people's joy and growth has brought her more fulfilment than working with numbers. Therefore, she transitioned to the outdoor education industry, where she spent 10 years providing experiential learning in an outdoor setting for children aged 8-18. Witnessing the growth and development of these children has been her most significant achievement.

Fluent in Cantonese, Mandarin, and English, Kana has had the opportunity to work and live in various countries, including China, Australia, the UK, and New Zealand. Her travels across different continents have made her comfortable and deeply interested in exploring diverse cultures.

In 2024, Kana joined Oceanwide Expeditions. She is excited to offer a unique and memorable experience to all passengers.

Elmar Kleimann – Ships Doctor



Elmar Kleimann, a specialist in surgery with a focus on visceral surgery and emergency medicine, began his medical career after completing his medical studies at the universities of Marburg and Aachen. His professional journey led him to different hospitals in Oldenburg, in Mönchengladbach and in Cologne, where he worked as a Consultant Surgeon and Head of the department of Surgery at the St. Franziskus-Hospital for the last 21 years.

Dr. Kleimann acquired numerous qualifications, including specialist titles in surgery, visceral surgery, and

emergency medicine. His expertise extends beyond surgery to include sonography, radiation protection, and maritime medicine.

Outside of his medical activities, Dr. Kleimann is an avid sailor and has undertaken numerous voyages on the North Sea, Baltic Sea, English Channel, Irish Sea, Mediterranean, and North Atlantic, including an Atlantic crossing, and has successfully completed challenging regattas such as the Rolex Fastnet Race. He shares his expertise also as a lecturer for "Medicine at Sea".

Away from the sea, Dr. Kleimann is a passionate globetrotter and nature lover. He has traveled to many places in Europe, the USA, Central America, Africa, the Indian Ocean, and Australia.

Dr. Kleimann started working with Oceanwide Expeditions in summer 2024 when he joined several voyages to Svalbard and Greenland in the Arctic Season. As a ship's doctor on expedition trips, Dr. Kleimann combines his medical expertise with his deep connection to the sea. His experience as a specialist in surgery and emergency medicine, as well as his knowledge in maritime medicine, enables him to ensure the health and safety of crew members and passengers



Antarctica - Learning and Discovery Voyage

Welcome on Board!

Date: 1 February 2025

Day 1 Ushuaia

Please make yourselves at home in your cabins and check you have received all your luggage! Tea/coffee is available in the Bar located on Deck 6.

PLEASE LISTEN FOR ANNOUNCEMENTS

- 17:00+/- Ship safety briefing, in the **Bar on Deck 6**. Attendance to this is **MANDATORY**. After the briefing the emergency alarm will be sounded, and you will need to go back to your cabin and get your life jacket. All guests will go to their **MUSTER STATION** which the **Bar on Deck 6**.
- 18:00+/- Please join the Expedition Team and Captain in the **Bar on Deck 6** for a celebratory toast to the forthcoming voyage. This will be followed by a welcome briefing by the Hotel Manager and Expedition Leader to orientate you to life on board and explain the plan for the forthcoming days.
- 19:00 Buffet dinner in the **Restaurant on Deck 4**.
- 20:15 Please join Sara, the Expedition Leader, in the **Bar on Deck 6** for the **Mandatory IAATO and Zodiac Briefing** and to hear more about plans for the forthcoming days. Attendance will be checked.

Please note that tonight we will be sailing into the open sea. Take your seasickness medication before you really feel the movements of the vessel, the doctor will be available in the bar after dinner to assist with such matters. Make sure that all your belongings are put away safely and that doors and drawers in your cabin are tightly closed. Walk slowly on the ship, always use one hand for yourself and one for the ship and beware of your fingers because of doors slamming!

"All things considered there are only two kinds of men in the world; those that stay at home and those that do not, the latter are more interesting." - Rudyard Kipling



Antarctica - Learning and Discovery Voyage

Date: 2 February 2025

Day 2 Drake Passage

- 07:45 Wake up call.
- 08:00-09:00 Buffet breakfast will be served in the Restaurant on Deck 4.
- 09:30 Please join Simon in the Bar for a presentation about Sea Birds of the Drake Passage.
- 11:30 Koen invites you to the Bar for a lecture about the Exploration of Antarctica until 1900.
- 12:30-13:30 Buffet lunch will be served in the Restaurant on Deck 4.
- 13:30+ You will be called deck by deck down to the Lecture Room on Deck 3 to collect your Muck Boots, please bring your thick socks so you can try them for size.
- 16:15 Please join Chloé in the Bar for an Introduction to Whales and Dolphins of the Southern Ocean.
- 18:15 Please join the Expedition Team in the Bar for recap, this is a daily event where we go through what we have seen during the day and plans for tomorrow.
- 19:00 Plated dinner will be served in the Dining Room on Deck 4.
- 20:30 We will screen the new Shackleton movie in the Bar with popcorn!

Remember: walk slowly on the ship, never rush. Keep one hand for yourself but at least one hand for the ship. Shut all doors firmly and keep fingers away from door frames.

*"One must never be in haste to end a day; there are too few of them in a lifetime". -
Sir Francis Drake*



Antarctica - Learning and Discovery Voyage

Date: 3 February 2025

Day 3: Approaching Antarctica

- 07:45 Wake up call.
- 08:00-09:00 Buffet breakfast will be served in the Restaurant on Deck 4.
- 09:30 Ben invites you to the Bar for a lecture titled 'Antarctica how? What is the Antarctic convergence and Divergence'.
- 11:30 Please join Sara in the Bar for a presentation about Penguins.
- 12:30-13:30 Buffet lunch will be served in the Restaurant on Deck 4.
- 13:30+ We will call you deck by deck for the **MANDATORY IAATO Biosecurity** in the **Bar**.
- When called, please bring all your outer garments, camera bags, ruck sacks, Muck boots, Zodiac life jackets, tripods, walking sticks etc. that you plan to use in Antarctica for the Expedition Staff to check. Please ensure everything is clean before proceeding to the Bar, you can collect a paper clip from reception to help with the cleaning process. Please remember to sign the self-declaration form once you have been approved by a member of the Expedition Team.
- 16:15 Carina welcomes you to a lecture about M/V Ortelius - a look behind the scenes.
- 18:15 Please join the Expedition Team in the Bar for daily recap.
- 19:00 Dinner will be served in the Dining Room on Deck 4.

"If your feet are cold, cover your head" – Inuit proverb



Antarctica - Learning and Discovery Voyage

Date: 4 February 2025

Day 4: Lemaire Channel, Pleneau Island and Port Charcot

06:45 Wake-up call.

Before breakfast we will transit down the Lemaire Channel, nicknamed Kodiak Gap, as it is considered one of the most photographic parts of the Antarctica Peninsula.

07:30-08:30 Buffet breakfast will be served in the Dining Room on Deck 4.

08:45+/- We would like to invite you to the gangway for a Zodiac cruise around Pleneau Island and the Iceberg Graveyard.

Please ensure you are dressed in full waterproofs, Mucks boots and that your lifejacket is correctly fastened before coming to the gangway. Remember to use the Virkon solution provided to clean your boots, tripods, monopods etc before you leave the ship and on your return.

12:00-13:00 Buffet lunch will be served in the dining room on Deck 4.

13:45 Matilda will give a lecture about Ice in the Bar.

15:00+/- We would like to invite you all to the gangway for a landing at Port Charcot.

15:15+/- For those who signed up for the plankton workshop we invite you to board Chloes' Zodiac. You will come ashore at Port Charcot after your Zodiac cruise.

Please remember, no sitting, kneeling, crouching or placing anything on the ground while you are ashore. Move slowly and quietly around wildlife.

19:15 Please join the Expedition Team in the Bar for recap.

19:30 Dinner will be served in the Dining Room on Deck 4.

"It is not the mountain we conquer, but ourselves" - Edmund Hillary



Antarctica - Learning and Discovery Voyage

Date: 5 February 2025

Day 5: Petermann Island, Vernadsky Station, Wordie Hut and the Argentine Islands.

- 07:15 Wake-up call.
- 07:30-08:30 Buffet breakfast will be served in the Dining Room on Deck 4.
- 08:45+/- We would like to invite you to the Gangway for a landing at Petermann Island.
- 09:00+/- For those who signed up for the plankton workshop boat we invite you to board Chloes' Zodiac. You will come ashore at Petermann Island after your Zodiac cruise.
- 12:00-13:00 Buffet lunch will be served in the dining room on Deck 4.
- 14:15+/- We would like to invite you to the gangway for a Zodiac cruise the Argentine Islands.
- We will cruise past the Ukraine Antarctic Station, Vernadsky and the British Historic site of Wordie Hut.
- 18:15 Please join the Expedition Team in the Bar for recap.
- 19:00 Dinner will be served in the Dining Room on Deck 4.

After dinner we will transit back down the Lemaire Channel.

"An adventure is only an inconvenience rightly considered. An inconvenience is only an adventure wrongly considered." - G. K. Chesterton



Antarctica - Learning and Discovery Voyage

Date: 6 February 2025

Day 6: Paradise Harbour, Almirante Brown and Stony Point

07:15 Wake-up call.

07:30-08:30 Buffet breakfast will be served in the Dining Room on Deck 4.

08:45+/- We would like to invite all guests to the gangway for a Zodiac cruise in Paradise Harbour, we will pass by the small Argentinian Base, Almirante Brown during the cruise.

12:00-13:00 Buffet lunch will be served in the dining room on Deck 4.

14:00+/- We would like to invite guests to the gangway for a continental landing at Stony Point.

14:15+/- For those who signed up for the plankton workshop boat we invite you to board Chloes' Zodiac, you will come ashore afterwards.

At the end of the landing, we hope to offer a polar plunge. If you wish to take an icy dip, please wear your swimwear underneath your expedition clothing. We provide the towels, do not bring them from your cabin.

Please remember to do vigilant biosecurity checks of your swim wear before coming ashore. Please note you cannot wear shoes or our Muck boots when swimming, or anything that could fall off, including hats, sunglasses, cameras or phones. When you get undressed, please place all your clothing on the waterproof mat provided, except your Muck boots which stay to the edge on the ground. There will be Zodiacs ready to take you back to the ship immediately after your swim.

18:15 Please join the Expedition Team in the Bar for recap.

19:00 Dinner will be served outside, please dress warmly!

*"The difficult is what takes a little time; the impossible is what takes a little longer –
Fridjof Nansen*



Antarctica - Learning and Discovery Voyage

Date: 7 February 2025

Day 7: Orne Island and Cuveville Island.

07:15 Wake-up call.

07:30-08:30 Buffet breakfast will be served in the Dining Room on Deck 4.

08:30+/- We would like to invite you for a landing at Orne Island, where we hope to see both nesting Gentoo and Chinstrap penguins.

08:45+/- For those who signed up for the plankton workshop we invite you to board Chloes' Zodiac. You will come ashore at Orne Island after your Zodiac cruise.

12:00-13:00 Buffet lunch will be served in the dining room on Deck 4.

13:30+/- We would like to invite all guests to the gangway for a Zodaic cruise of Cuverville Island.

16:30 Please join Sara in the Bar for a lecture about Marine Threats.

18:15 Please join the Expedition Team in the Bar for recap.

19:00 Buffet dinner will be served in the Dining Room on Deck 4.

"A journey is a person in itself, no two are alike. And all plans, safeguards, policies, and coercion are fruitless. We find after years of struggle that we do not take a trip, a trip takes us." - John Steinbeck



Antarctica - Learning and Discovery Voyage

Date: 8 February 2025

Day 8: Deception Island, Hannah Point and Walker Bay

- 06:30 Wake-up call.
We will sail into Deception Island; we encourage you to be on the outside decks to enjoy this remarkable navigation. The caldera has a narrow entrance, just 230 metres (755 feet) wide, called Neptune's Bellows. Navigating a ship through the bellows can be very tricky, adding to the hazard is Ravn Rock, which lies 2.5 metres (8.2 feet) below the water in the middle of the channel. Remains of a shipwreck, a Norwegian whale catcher that hit Ravn Rock in 1957, can still be seen in the passage.
- 07:00-08:00 Buffet breakfast will be served in the Dining Room on Deck 4.
- 08:00+/- We invite all other passengers for a landing at Telefon Bay within Deception Island.
- 08:15 For those who signed up for the plankton workshop we invite you to board Chloes' Zodiac.
- 12:00 Jens would like to invite you to the Bar for a short presentation about the last eruption of Deception Island and its whaling history.
- 12:30-13:30 Buffet lunch will be served in the dining room on Deck 4.
- 14:30+/- We hope to take you for a final Zodiac cruise of Hannah Point and Walker Bay.
- 18:15 Please join the Expedition Team in the Bar for recap.
- 19:00 Dinner will be served in the dining room on Deck 4.

Please note that tonight we will be sailing into the open sea. Take your seasickness medication before you really feel the movements of the vessel, the doctor will be available in the bar after dinner to assist with such matters. Make sure that all your belongings are put away safely and that doors and drawers in your cabin are tightly closed.

"It must be remembered that the men whose desires lead them to the untrodden paths of the world have generally marked individuality." - Sir Ernest Shackleton



Antarctica - Learning and Discovery Voyage

Date: 9 February 2025

Day 9: Drake Passage.

- 07:45 Wake-up call.
- 08:00-09:00 Buffet breakfast will be served in the Dining Room on Deck 4.
- 09:30 Jens invites you to the Bar for a lecture titled 'Race to the South Pole'.
- 11:15 Matilda welcomes you to the bar for a presentation about her time working at the Antarctic Research Station, Scott Base
- 12:15 We will call you to the Lecture Room to return your Muck boots and hire rental clothing, please listen for announcements.
- 12:30-13:30 A buffet lunch is served in the Restaurant, Deck 4.
- 16:15 Please join Chloe in the Bar for a presentation about 'Drifting Life - Plankton'.
- 18:15 Join the Expedition Staff in the Bar for recap! There will be some important information given about disembarkation, settling accounts etc. therefore, we encourage at least one person from each group to attend.
- 19:00 Plated dinner is served in the Restaurant, Deck 4.

PLEASE NOTE: Upon arrival in Ushuaia, we will provide free busses to the airport for morning flights only, at 09:00 a.m. Please get from Reception a **Blue** luggage tag if you would like this service. For the Guests with afternoon flights, we will transfer your luggage to the drop-off center (1210 Av. Maipu), and you will need to pick up your luggage before 14:00 hrs. No luggage tag is required for this service, you just need to indicate your luggage at the pier and ensure the stewadors load it into the truck. For guests who have their own transportation or planning to stay in Ushuaia, please wait till the ship is cleared by the port agent and you are free to go, no luggage tag is required for this.

"One must never be in haste to end a day; there are too few of them in a lifetime". - Sir Francis Drake.



Antarctica - Learning and Discovery Voyage

Date: 10 February 2025

Day 10: Approaching South America.

07:45 Wake-up call.

08:00-09:00 Breakfast buffet will be served in the Restaurant, Deck 4.

After breakfast you will be able to settle your accounts at reception, please ensure your account is settled before 17:00 at the latest.

09:30 Please join Carina in the Bar for her presentation titled 'The life of an Iceberg' where she will explain how we track them.

11:30 Koen invites you to the Bar for a presentation about the ecological importance of Sea Ice.

12:30-13:30 A buffet lunch is served in the Restaurant, Deck 4.

16:15 Sara would like you to join her in the Bar for a presentation about Oceanwides' other destinations.

18:15 Join the Expedition Staff in the Bar for Captain's Farewell Cocktails and a viewing of the slideshow.

A copy of the voyage slideshow will be available for collection from the Bar after dinner, please bring a USB or similar, or we can help airdrop it to Apple devices.

19:00 Dinner is served in the Restaurant, Deck 4.

"An Antarctic expedition is the worst way to have the best time of your life." - Apsley Cherry-Garrard



Antarctica - Learning and Discovery Voyage

Date: 11 February 2025

Day 11: Ushuaia.

07:15 Wake-up call.

Please ensure your luggage is outside your room before 07:15am.

07:30-08:30 Breakfast buffet will be served in the Restaurant, Deck 4.

PLEASE NOTE: Upon arrival in Ushuaia, we will provide free busses to the airport for morning flights only, at 09:00 a.m. Please get from Reception a **Blue** luggage tag if you would like this service. For the Guests with afternoon flights, we will transfer your luggage to the drop-off center (1210 Av. Maipu), and you will need to pick up your luggage before 14:00 hrs. No luggage tag is required for this service, you just need to indicate your luggage at the pier and ensure the stewadors load it into the truck. For guests who have their own transportation or planning to stay in Ushuaia, please wait till the ship is cleared by the port agent and you are free to go, no luggage tag is required for this.

08:30+/- We invite all guests to disembark.

From all the Expedition Team and Crew on board the MV Ortelius, we wish you safe onward travel and thank you for sharing this incredible voyage with us. We look forward to sailing with you again in the future.

"It's when you are safe at home that you're having an adventure. When you're having an adventure, you wish you were safe at home." - Thorton Wilder