



NORTH SPITSBERGEN EXPLORER

Versatile Landscapes – Sea Ice - Wildlife

Longyearbyen – Longyearbyen

24th June – 1st July 2025

On board *m/v Plancius*



M/V *Plancius* was built in 1976 as an oceanographic research vessel for the Royal Dutch Navy and was named “Hr. Ms. *Tydeman*”. The vessel was completely rebuilt as a passenger vessel in 2009 and complies with the latest SOLAS-regulations (Safety Of Life At Sea). M/v *Plancius* is 89 m long, 14.5 m wide and has a maximum draft of 5 m, ice class 1D, 10,5 knots average cruising speed and has 3 Diesel- Electric engines.



Captain Evgeny Levakov (Russia)

and his international crew of 50 sailors

Chief Officer:	Martin Hansson	[Sweden]
Second Officer:	Giovanie Simone	[Philippines]
Third Officer:	Solina Duguay	[Canada]
Hotel Manager:	Volodymyr Cherednychenko	[Ukraine]
Asst. Hotel Manager:	Victoria Bridgwood	[UK]
Head Chef:	Bawa Gaurav	[India]
Sous Chef:	Oleksii Shvets	[Ukraine]
Ships doctor:	Marije van Zanten	[Netherlands]
Expedition Leader:	Philipp Schaudy	[Austria]
Asst. Expedition Leader:	Michelle van Dijk	[Netherlands]
Expedition Guide:	Eduardo Rubio Herrera	[Guatemala]
Expedition Guide:	Koen Hoekemeijer	[Netherlands]
Expedition Guide:	Valeria Sainz Herrera	[Argentina]
Expedition Guide:	Karoline Bælum	[Denmark]
Expedition Guide:	Stefanie Liller	[Germany]
Expedition Guide:	Clara Lacchetti	[Argentina]

WELCOMES YOU ON BOARD!

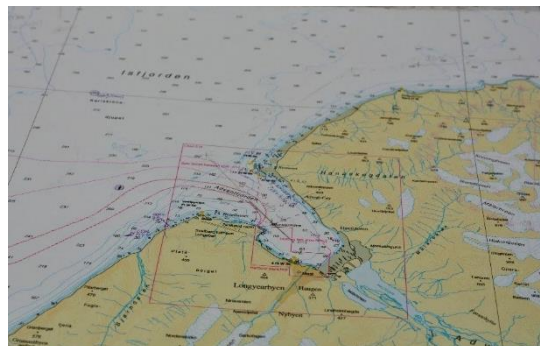
Day 1 – Tuesday, June 24. Longyearbyen, Embarkation

12h00 GPS Position: 78°14.8'N / 014°58.4'E

Wind: W-3 • Sea: Calm • Weather: Overcast • Air: 8°C • Sea: 5°C

The air buzzed with excitement as we gathered on the pier of Longyearbyen, nestled in the stark, stunning wilderness of Svalbard.

Some of us had used this last day exploring the cosy town of Longyearbyen. With its many shops and coffee places it's a friendly and welcoming little village. However at 16:00 we were expected at the main pier for our shuttle to our beautiful and gracious ship the M/V Plancius.



Once on board we had the opportunity to familiarize ourselves with the ship's layout—its winding corridors, cozy cabins, and the various decks that would soon become our floating home. Friendly crew members and expedition staff, always smiling and welcoming, were quick to introduce themselves, offering help and answering questions as we explored.

Soon, we gathered in the panoramic lounge, its large windows offering great views of the surrounding landscape. There, we attended the mandatory safety drill, followed by an informative presentation by our Expedition Leader Philipp, outlining the voyage ahead—our route, the planned landings, and what to expect in the coming days.

Afterwards, we headed to the dining room for our first dinner on board. The atmosphere was warm and lively, with the hum of conversation and clinking cutlery filling the space. Over a delicious meal, we began to settle in, bonding with fellow passengers and sharing the growing anticipation of the journey into the Northern area of the Svalbard archipelago.



Day 2 – Wednesday, June 25. Tinayrebukta, Signehamna and Lilliehöökbreen

12h00 GPS Position: 79°12.3'N / 012°02.9'E

Wind: SW-2 • Sea: Smooth • Weather: Overcast • Air: 8°C • Sea: 5°C

We woke up early this morning, full of anticipation—it was the first day of our expedition, and excitement was in the air! After gathering for a hearty breakfast at the restaurant, we were ready to dive into the day's adventures.

Once breakfast was done, we headed to the gangway to board the zodiacs. Our first landing was about to begin! The destination: Möllerfjorden, specifically the stunning bay of Tinayrebukta in Haakon VII Land, Spitsbergen, Svalbard. Nestled on the eastern side of the fjord, Tinayrebukta is flanked by the majestic peaks of Fallièresfjella and Generalfjella, with the Tinayrebreen glacier spilling into its icy waters. The bay takes its name from French painter Jean Paul Louis Tinayre.



To make the most of this remarkable landscape, the group split into three hiking options—leisure, medium, and long walks—so everyone could explore at their own pace. No matter the route, the scenery was breathtaking: carpets of Arctic flowers, grazing goats and reindeer, and even harbor seals lounging on the ice. It felt surreal to witness such wildlife in this remote corner of the world. What a start to our journey!

After a morning of exploration, we returned to the ship for a well-earned lunch, buzzing with stories and impressions.

In the afternoon, we set out for our second stop: Signehamna, a picturesque bay and natural harbour in Albert I Land, located on the western side of Lilliehöökfjorden.

The bay stretches about a nautical mile in both length and width. A narrow headland called Gunnarpynten splits the bay and creates a sheltered harbor—ideal for smaller vessels.

Now part of the Nordvest-Spitsbergen National Park, Signehamna holds historical significance too. Here lie the remains of German weather stations from World War II—first Knospe (1941–1942), then Nussbaum—quiet witnesses to the area's wartime past. Once again, we divided into three walking groups, and each one was captivated by the combination of raw Arctic beauty and fascinating history. This landing was truly something special.

Back on board, we warmed up with a hot drink and stepped out onto the outer deck. Just in time for a scenic ship cruise past the immense Lilliehöökreen glacier—an unforgettable sight as towering walls of ice drifted silently by.

During the evening recap, Philip walked us through tomorrow's plans, and Karoline gave us a deeper understanding of the glaciers we had seen. Then it was time for dinner, rounding off an incredible first day.

It couldn't have been a better beginning to our expedition—full of wonder, discovery, and memories that will stay with us forever.

Day 3 – Thursday, June 26. Monacobreen and Texas Bar

12h00 GPS Position: 79°31.4'N / 012°29.6'E

Wind: W-2 • Sea: Smooth • Weather: Overcast • Air : 7°C • T Sea : 5°C

We were gently woken at 7:15 by Philip's cheerful voice, greeted by the serene beauty of Liefdefjord—"Love Fjord"—bathed in morning sunshine. Located in the northwest of Spitsbergen, this fjord is famous for its striking red mountains, formed from ancient Devonian sandstone. The calm waters and clear skies set the perfect tone for the day ahead.

After breakfast, we bundled up in our warmest layers and made our way to the gangway for an exhilarating two-hour zodiac cruise in front of the magnificent Monaco Glacier. Named after Albert I of Monaco, this towering glacier spills into the fjord, where its icy cliffs create a vibrant feeding ground teeming with life. Hundreds of kittiwakes swooped and danced in the air, feasting in the nutrient-rich waters where the glacier's meltwater meets the sea.

At the glacier's western edge, a massive blue iceberg sparkled in the sunlight—a rare sight in Svalbard, where icebergs of this size are uncommon.

We circled it slowly, mesmerized by its color and scale. Until 2015, the Monaco Glacier and its neighbor Seligerbreen shared a single ice front; today, they've retreated nearly two kilometers apart, revealing the rugged peak of Stortingspresidenten between them.

Back on board, we enjoyed a relaxing lunch as the ship cruised toward our next destination: Texas Bar, a rustic cabin built in 1927 by the legendary trapper Hilmar Nøis. Still used by locals on excursions, the cabin offered a glimpse into life in the Arctic decades ago.



From there, the group split into different hiking options. The long hikers set off for a scenic climb to a 350-meter-high viewpoint behind the hut, spotting purple sandpipers and nesting ptarmigans along the way. The medium group strolled across the lush tundra to a panoramic lookout over the fjord, while the leisurely walkers enjoyed a peaceful beachside ramble, soaking in the Arctic silence and stunning views.



Back aboard the ship, we gathered for a delicious three-course dinner as we sailed out of the fjord, heading towards Gråhukken—the remote outpost where German author and painter Christiane Ritter famously overwintered in the 1930s. Karoline shared Ritter's story, weaving in her own experiences of overwintering in Svalbard in recent years, offering a deeply personal perspective on life in the High Arctic.

Though the sun never dipped below the horizon, we eventually turned in for the night, as the ship gently cruised eastward toward the Hinlopen Strait—eager for whatever adventures tomorrow might bring.

Day 4 – Friday, June 27. Alkefjellet, Kinnvika and BBQ

12h00 GPS Position: 79°40.7'N / 018°22.4'E

Wind: SE-5 • Sea: Calm • Weather: Overcast • Air: 5°C • Sea: 4°C

During the night, we sailed out of Liefdefjorden aboard the *Plancius* and headed south into Hinlopenstretet—the strait that separates the large island of Spitsbergen from Nordaustlandet (the lands of the northeast).

As we were gently woken by Philipp, our destination for the morning—Alkefjellet—was already visible after a short ride. Our expedition team invited us on a Zodiac cruise to explore this remarkable place, which, from a few kilometres away, appeared rather unassuming.

It was the first windy day since we had come aboard, and with temperatures hovering around 0°C, our expedition leader advised us to dress warmly and in multiple layers.

Even from a distance, we could tell that this site was unique—its dramatic topography marked by towering dolerite columns (an intrusive basalt rock) and streaks of marble. At Alkefjellet, the cliffs where the birds nest rise directly from sea level, unlike other breeding areas that are more inland.

The closer we approached, the more birds we saw—and the more sounds filled the air. It was breathtaking. Tens of thousands (around 60,000) breeding pairs of Brünnich's guillemots congregate here during nesting season, creating a chaotic symphony of squawks and flutters. Despite its grandeur, Alkefjellet is only considered a medium-sized colony, which seems almost unbelievable when you're right there.



We cruised slowly along the cliffs, carried gently by the southern wind, taking in the sights and snapping hundreds of photos. Along the way, we spotted glaucous gulls and kittiwakes feeding on guillemot carcasses that had fallen from the cliffs.

By the end of the cruise, all the boats regrouped in a small, picturesque bay near a glacier and began the return journey to *Plancius*.



Fortunately, it was nearly lunchtime when we arrived back—everyone was looking forward to a warm soup and a cozy break before the afternoon’s activities.

Around 3 p.m., we were called again to the gangway. The wind had picked up though and the swell made Zodiac embarkation more challenging. As we waited our turn, we could hear Dr. Marije calling out, “Both hands on the gangway and sailor’s grip!”

That afternoon’s landing was quite different from anything we had experienced so far: Kinnvika, a relatively well-sheltered bay on the northern edge of Murchisonfjord. A Swedish-Finnish expedition built an extensive research station here during the International Geophysical Year (1957–59), including ten buildings—among them, a sauna!



We had the chance to visit some of these historic structures as we wandered through the snow. Scattered around were the remains of an amphibious vehicle and various other relics, some dating back to the original Geophysical Year, others from more recent times.

In fact, Marie Tieche and Hauke Trinko overwintered here in 2003–04, and during the 2007–08 International Polar Year—the modern successor to the Geophysical Year—the old station at Kinnvika was brought back into use. Scientists from ten countries studied the surrounding environment, with a focus on the Vestfonna ice cap and how it responds to a changing climate.

Once again, the expedition team split us into three groups. The leisurely and medium hikers explored the station area, nearby hills, and beach, while the long hikers trekked to the highest point (128 meters above sea level) for panoramic views of the fjord.



The landscape here felt entirely different—an Arctic desert shaped by relentless winds and covered in ice for most of the year. It's a tough place for life to persist, with little vegetation and harsh conditions.

Back on the ship, we gathered once more in the bar to reflect on the day's incredible experiences. Our guides shared fascinating background information: Steffi told us about the life cycle of Brünnich's guillemots, and Clara introduced us to the world of macroalgae.

To top it all off, our galley team treated us to a delicious dinner.

In the evening, we set sail northward toward the pack ice—what a full and unforgettable day!

Day 5 – Saturday, June 28. Pack Ice day, Looking for Polar Bears

12h00 GPS Position: 81°40.7'N / 020°03.4'E

Wind: E-3 • Sea: Calm • Weather: Sunny • Air : 5°C • Sea : 0°C

After a wholesome Arctic dinner yesterday evening, we departed the Kinnvika area late in the evening. Our course was set North-North-East, aiming to reach the pack ice in the early hours of this morning. With excellent sailing conditions, we arrived at the ice as planned!



Since we had enjoyed our traditional BBQ the evening before—and some of our guests danced well into the night—we allowed ourselves a small luxury: a half-hour sleep-in. Our wake-up call came at 07:30.

After breakfast, we began to encounter the first floes of pack ice. Long before this moment, the keen eyes of our watchmen, officers, and staff were already scanning the horizon through binoculars, carefully examining every ice floe. Our mission was clear: to search for polar bears, the solitary kings of the North.

Our captain continued heading North-North-East, targeting a small peninsula of ice where—according to the latest ice charts—the ice was thick enough to be promising ground for spotting bears.

As we advanced northward, the weather began to shift. The early morning brought perfect conditions: limitless visibility, blue skies, and brilliant sunshine. But the farther north we sailed, the more the fog crept in, gradually reducing visibility. Our captain and officers navigated skilfully through alternating banks of fog, offering moments of clarity interspersed with near-whiteout conditions.



Interestingly, as we headed north, the sun remained mostly behind us. This alignment allowed us to witness a rare optical phenomenon: a fogbow. Unlike a rainbow, which is rich in colour, the fogbow appeared as a faint, ethereal arc caused by the diffraction of sunlight by tiny fog droplets. At times, we could discern a subtle

hint of red along its outer edge—a delicate reminder of nature's artistry.

Around noon, we reached the northernmost point of our voyage: 81° 40.914' N, 20° 12.796' E. At that moment, we were just 500 nautical miles—or approximately 925 kilometres—from the North Pole.

By midday, anticipation among our guests was high. Many hoped to spot a polar bear, but despite the diligent watch and persistent searching, no bears had yet appeared. We went to lunch with the hope that the fog would lift—and our luck would change. Time, however, was not on our side. We knew that our chances would diminish once we left the pack ice.

But finally, just after 15:00, the wait paid off. Philipp, our Expedition Leader, made a brief radio call announcing a sighting ahead of the ship. Moments later, Clara confirmed it: a polar bear was visible in the distance. As we slowly approached, we saw that the bear had a kill. Around it, several scavengers—glaucous gulls and ivory gulls among them—waited patiently for their share. We observed the bear for a generous amount of time, during which many of our guests were visibly moved, some even with tears of joy. For many, it was their first time seeing a polar bear in the wild. We believe it was a young male.



After this incredible encounter, we changed course and began sailing South-South-West. Many guests gathered in the lounge for a hot drink and to reflect on the experience. Then, around 17:00, Koen made another announcement over the radio: *"We have another polar bear."* And indeed, he was right. Directly ahead of us, another male bear lay on the ice beside a fresh kill. With perfect lighting and a favourable position, our officers and captain expertly maneuvered the ship for a close—but non-intrusive—approach, offering an unforgettable photo opportunity. This was our second bear of the day.



We left the bear in peace and by 18:30, it was time for our daily recap. The session began with spontaneous applause from us—clear evidence of our excitement and satisfaction. Philipp presented the plans for the following day, Eduardo explained the science behind haloes and fogbows, Koen shared a brief segment on polar bears, Karoline discussed the significance of sea ice, and Michelle recounted the gripping tale of the airship *Italia* and the dramatic rescue of its crew.

As the evening unfolded, we continued sailing south toward the main island of the archipelago, under clear skies and calm seas—accompanied by a ship full of happy, fulfilled guests.

Day 6 – Sunday, June 29. Alicehamna and Buchananhalvoya

12h00 GPS Position: 79°44.4'N / 012°10.2'E

Wind: NE-2 • Sea: Rippled • Weather: Sunny • Air : 12°C • T Sea : 5°C

We woke up early this morning, excited for the day ahead. After a night of strong winds, we arrived at our destination to find beautiful sunshine and calm waters.

We all headed to the restaurant for a hearty breakfast, eager to begin our morning activity.

We made our way to the gangway and boarded the familiar Zodiacs. Our destination was Alicehamna, a bay located to the east of Raudfjorden and south of Bruceneset. Alicehamna was named after the *Princesse Alice*, the ship used by Prince Albert I of Monaco during his oceanographic expeditions to Svalbard between 1898 and 1907. Prince Albert was a patron of several prominent polar scientists, including William S. Bruce, Fridtjof Nansen, and Gunnar Isachsen. With the Prince's support, Isachsen played a key role in shaping modern Norwegian research in Svalbard.



We divided into three walking groups for the morning hike. Since the terrain was still snowy, we strapped on snowshoes—another unique Arctic experience to add to our time aboard the *Plancius*! After some laughter about our clumsiness putting them on, we got the hang of walking wearing them. We set off in our respective groups: leisure, medium, and long walks. Along the way, we spotted a reindeer and soaked in the stunning scenery.



Following the hike came the moment of truth: the polar plunge! For those brave enough to face the frigid waters, a refreshing swim was the perfect reward.

And the morning wasn't over yet—back on the beach, the hotel department treated us to hot chocolate, which was exactly what we needed. It was truly a perfect morning.

After such an exhilarating start of the day, we returned to the ship for a well-earned lunch.

Our next destination was just a short sail away: Buchananhavøya, a peninsula in Albert I Land on Spitsbergen, Svalbard. It sits at the head of Raudfjorden, where the fjord branches into Ayerfjorden to the west and Klinckowströmfjorden to the east. The peninsula is named after John Young Buchanan. At its southern end rises the mountain Buchanantoppen, flanked by the glaciers Chauveaubreen to the west and Raudfjordbreen to the east.



Once again, we split into three walking groups. The dramatic landscape and rich history of the area made this landing particularly memorable.



After the walk, we returned to the ship for some warm tea or coffee. During the recap, Philip shared our plans for tomorrow. Steffi taught us about the adorable reindeer, and Valeria gave us perspective on the massive animals we'd seen were especially stunned by the size of the blue whale!

Dinner was soon ready, bringing an unforgettable day to a perfect ending.

Day 7 – Monday, June 30. Poolepynten and Alkhornet

12h00 GPS Position: 78°19.1'N / 012°24.4'E

Wind: SSE-4 • Sea: Smooth • Weather: Part. Cloudy • Air: 10°C • Sea: 7°C

This morning we woke up once again with clear skies and the sun shining brightly. Yesterday was a wonderful day and today looked just as promising. Today, however we were going to see the big blubbery Walruses! But first things first, breakfast!

Around 9 A.M. we started boarding the zodiacs for our landing at Poolepynten. Poolepynten is a headland at the eastern coast of the Prins Karls Forland. It is located within the strait of Forlandsundet. The headland is named after British whaler Jonas Poole. It has a length of about 1.5 kilometers and has a triangular shape. Ocean currents have swept up sand in this specific area creating a unique triangular shape. Poolepynten lies within the Forlandet National Park.



At the beach we were divided into two groups. The first group would go for a relaxing walk in the sun and the second group would start with a walk towards the walrus. The weather was once again sunny and warm and many of us were definitely overdressed. When we came closer to the walrus the big blubbery shapes became bigger and bigger. Walruses can reach a weight of 1500 kg and their characteristic tusks can be a meter in length. The walruses have no natural predator as their skin is very thick and with those sharp and long tusks the risk for polar bears is too big to attack them.

We witnessed about 30 animals curled up close together. Walruses like the feel of each other's skin but lying on such a big pile also creates annoyance and that was clearly visible for us. They made many small, annoying movements and poked each other every now and then with the tusks.



After observing the walrus for about 20 min it was time to return to the zodiacs and head back to the ship.

In the afternoon we would make our last landing at Alkhornet, a beautiful Arctic tundra next to steep bird cliffs. Alkhornet means the Horn of the Auks which are the birds we can find here. Other birds breeding on the cliff are the Brünnich's Guillemot and Kittiwakes.

Because there's so many birds it is also a good place to spot foxes, and last but not least it is a fantastic place to see reindeer from up close.

However first it was time for lunch and then to much excitement of some of us, we were delayed. Normally delays are bad news, but we were excited to use this extra time for a little nap ;) after all the hikes and impressions of the past week.

At 16:00 it was time to go on land in this beautiful place. We didn't have as much as usual due to our delay, but still we had a good 1 ½ hours to explore. We split up in 3 groups and each went its own way as we had done all week.



None of the groups had to walk very far to see the first reindeer and it was fantastic to see them from so close. Some of us went a bit higher where we had even closer encounters with not just adult reindeer, but lots of calves as well. The calves made the cutest sounds and watching them was wonderful. On our way back down, we were still hoping to see foxes, but unfortunately we only found clear traces of their presence. Lots of bird carcasses lying around, but no sign of the beautiful Arctic fox.



Back on the ship we quickly changed into a bit more festive attire because it was time to celebrate our expedition with the captain and the expedition team. Philipp expressed his gratitude and ended with an inspiring poem. The captain apologized for going west into the fog during our ice day, but thankfully he made up with helping us find two bears and navigated the ship perfectly in their presence. We will never forget it.

Then to close it off Steffi started the slide show she had made. Although the team contributed with photos and videos, Steffi put together a fantastic slide show and here and there some of us shed a small tear when seeing all the beautiful moments from the past week.

Dinner was fantastic as usual and it was really nice that hotel manager *Vova* introduced his entire hotel team to us. We knew the teams in the dining room and housekeeping, but behind the scene there's many people working hard to make sure we have a comfortable and tasty trip.

At night M/V Plancius sailed into Tempelfjorden for a last scenic cruise. Some of us headed to the bar for a nice drink whereas others decided to turn in early. Good night everyone!

Day 8 – Tuesday, July 1. Longyearbyen, Disembarkation

08h00 GPS Position: 78°13.9'N / 015°37.6'E

Wind: NE-5 • Sea: Smooth • Weather: Overcast • Air: 10°C • Sea: 5°C

This morning, we were woken up one more time by Philipp's soft morning voice. Surely we will miss him waking us up! Unfortunately, the only activity planned for today was our disembarkation and saying our farewells and goodbyes to our fellow guests that had become our friends in the past week. However, Oceanwide wouldn't let us leave the ship with one last breakfast. So, after we had put our big luggage pieces in the hallways, we made our way to the restaurant for one more delicious breakfast and to see the wonderful dining room crew once again. Although some of us felt melancholic that the expedition was about to end, we also felt happiness and gratitude for the past seven days that had been so intense and wonderful.

Then the time had arrived to leave the beautiful M/V Plancius, the ship that had brought us to so many places and that had allowed us to observe fantastic wildlife, landscapes and the mesmerizing pack ice. We will surely miss this little blue ship.

Today we were docked at the coal pier so no need to dress up in those waterproofs again, no today we could walk down the gangway and set foot in Longyearbyen once again. Some of us went to town whereas others made their way to the airport. However, one thing we all had in common was this wonderful trip and the amazing memories it has given us. Saying goodbye is never easy, but it often also means that you've had a fantastic time and that made it totally worth it.

The wonderful expedition team waved us goodbye while the buses slowly departed and the ship slowly became smaller. Off to new adventures and maybe one day back on board with Oceanwide Expeditions. Thank you and goodbye!

Total distance sailed on our voyage: nm 1011
Northernmost position: 81° 40.914'N / 020° 12.796'E

On behalf of Oceanwide Expeditions, the Captain, Crew and Expedition staff we would like to thank you for pleasant times, it has been a pleasure travelling with you.





Svalbard Summer 2025



1	Longyearbyen	24.06 PM
2	Tinayrebukta	25.06 AM
3	Signehamna	25.06 PM
4	Lilliehöökbreen	25.06 Late PM
5	Monacobreen	26.06 AM
6	Texas Bar	26.06 PM
7	Alkefjellet	27.06 AM
8	Kinnvika	27.06 PM
9	Pack-Ice	28.06 AM / PM
10	Alicehamna	29.06 AM
11	Buchananhalvøya	29.06 PM
12	Poolepynten	30.06 AM
13	Alkhornet	30.06 PM
1	Longyearbyen	01.07. AM

Birds and Mammals of Svalbard and Franz Joseph Land

English Name	Latin	German	French	Dutch	Breeding / Transient / Vagrant	24-jun	25-jun	26-jun	27-jun	28-jun	29-jun	30-jun	1-jul
Great Northern Diver	<i>Gavia immer</i>	Eistaucher	Plongeon Imbrin	Ijsduiker	V								
Red-throated diver	<i>Gavia stellata</i>	Sterntaucher	Plongeon catmarin	Roodkeelduiker	B		X						
Northern Fulmar	<i>Fulmarus glacialis</i>	Eissturmvogel	Fulmar boréal	Noordse stormvogel	B	X	X	X	X	X	X	X	
Northern Gannet	<i>Morus bassanus</i>	Basstölpel	Fou de Bassan	Jan-van-gent	T								
Whooper Swan	<i>Cygnus cygnus</i>	Singschwan	Cygne chanteur	Wilde zwaan	T								
Bean Goose	<i>Anser fabalis</i>	Saatgans	Oie des moissons	Taigarietgans	V								
Pink-footed Goose	<i>Anser brachyrhynchus</i>	Kurzschnabelgans	Oie à bec court	Kleine rietgans	B		X	X				X	
Barnacle Goose	<i>Branta leucopsis</i>	Weisswangengans	Bernache nonnette	Brandgans	B		X	X				X	
White-fronted Goose	<i>Anser albifrons</i>	Blässgans	Oie Rieuse	Kolgans	V								
Greylag Goose	<i>Anser anser</i>	Graugans	Oie cendrée	Grauwe gans	V								
Brent Goose	<i>Branta bernicla</i>	Ringelgans	Bernache cravant	Rotgans	B							X	
Snow Goose	<i>Chen caerulescens</i>	Schneegans	Oie des neiges	Sneeuwgans	V								
Eurasian Wigeon	<i>Anas penelope</i>	Pfeifente	Canard siffleur	Smient	T								
Eurasian Teal	<i>Anas crecca</i>	Krickente	Sarcelle d'hiver	Wintertaling	B								
Mallard	<i>Anas platyrhynchos</i>	Stockente	Canard colvert	Wilde eend	T								
Northern Pintail	<i>Anas acuta</i>	Spießente	Canard pilet	Pijlstaart	B								
Tufted Duck	<i>Aythya fuligula</i>	Reiherente	Fuligule morillon	Kuifeend	T								
Common Eider	<i>Somateria mollissima</i>	Eiderente	Eider commun	Eidereend	B	X	X	X		X	X	X	
King Eider	<i>Somateria spectabilis</i>	Prachteiderente	Eider à tête grise	Konings eider	B								
Steller's Eider	<i>Polysticta stelleri</i>	Scheckente	Eider de Steller	Stellers eider	V								
Long-tailed Duck	<i>Clangula hyemalis</i>	Eisente	Harelda boréale	Ilseend	B								
Black Scoter	<i>Melanitta nigra</i>	Trauerente	Macreuse noire	Zwarte zee-eend	B/T								
Common Goldeneye	<i>Bucephala clangula</i>	Schellente	Garrot à oeil d'or	Briduiker	V								
Rock Ptarmigan	<i>Lagopus mutus hyperboreus</i>	Alpenschneehuhn	Lagopède alpin	Alpensneeuwhoen	B		X	X					
Eurasian Oystercatcher	<i>Haematopus ostralegus</i>	Austernfischer	Huïtrier Pie	Scholekster	V								
Ringed Plover	<i>Charadrius hiaticula</i>	Sandregenpfeifer	Grand Gravelot	Bontbekplevier	B							X	
European Golden Plover	<i>Pluvialis apricaria</i>	Goldregenpfeifer	Pluvier doré	Goudplevier	B								
Sanderling	<i>Calidris alba</i>	Sanderling	Bécasseau sanderling	Drieteenstrandloper	B								
Pectoral Sandpiper	<i>Calidris melanotos</i>	Graubruststrandläufer	Bécasseau tacheté	Gestreepte strandloper	V								
Purple Sandpiper	<i>Calidris maritima</i>	Meerstrandläufer	Bécasseau violet	Paarse strandloper	B		X	X			X	X	
Red Knot	<i>Calidris canutus</i>	Knutt	Bécasseau maubèche	Kanoetstrandloper	B								
Dunlin	<i>Calidris alpina</i>	Alpenstrandläufer	Bécasseau variable	Bonte strandloper	B								
Whimbrel	<i>Numenius phaeopus</i>	Regenbrachvogel	Courlis corlieu	Regenwulp	T								
Common Redshank	<i>Tringa totanus</i>	Rotschenkel	Chevalier gambette	Tureluur	V								
Ruddy Turnstone	<i>Arenaria interpres</i>	Steinwälder	Tournepieuvre à collier	Steenloper	B						X		
Grey Phalarope	<i>Phalaropus fulicarius</i>	Thorshühnchen	Phalarope à bec large	Rosse franjepoot	B							X	
Red-necked Phalarope	<i>Phalaropus lobatus</i>	Odinshühnchen	Phalarope à bec étroit	Grauwe franjepoot	B								
Pomarine Skua	<i>Stercorarius pomarinus</i>	Spatelraubmöwe	Labbe pomarin	Middelste jager	T								
Arctic Skua	<i>Stercorarius parasiticus</i>	Schmarotzerraub-möwe	Labbe parasite	Kleine jager	B		X				X	X	
Long-tailed Skua	<i>Stercorarius longicaudus</i>	Falkenraubmöwe	Labbe à longue queue	Kleinste jager	B			X					
Great Skua	<i>Stercorarius skua</i>	Skua	Grand Labbe	Grote jager	B								
Sabine's Gull	<i>Xema sabini</i>	Schwalbenmöwe	Mouette de Sabine	Vorkstaartmeeuw	B								
Black-headed Gull	<i>Larus ridibundus</i>	Lachmöwe	Mouette rieuse	Kokmeeuw	V								
Common/Mew Gull	<i>Larus canus</i>	Sturmmöwe	Goéland cendré	Stormmeeuw	V								
Glaucous Gull	<i>Larus hyperboreus</i>	Eismöwe	Goéland bourgmestre	Grote Burgemeester	B	X	X	X	X	X	X	X	
Iceland gull	<i>Larus glaucoides</i>	Polarmöwe	Goéland arctique	Kleine burgemeester	T								
Herring Gull	<i>Larus argentatus</i>	Silbermöwe	Goéland argenté	Zilvermeeuw	V								

Lesser black-backed Gull	<i>Larus fuscus</i>	Heringsmöwe	Goéland brun	Kleine mantelmeeuw	V								
Great black-backed Gull	<i>Larus marinus</i>	Mantelmöwe	Goéland marin	Grote mantelmeeuw	B								
Kittiwake	<i>Rissa tridactyla</i>	Dreizenmöwe	Mouette tridactyle	Drieteenmeeuw	B	X	X	X	X	X	X	X	
Ross' Gull	<i>Rhodostethia rosea</i>	Rosenmöwe	Mouette de Ross	Rossmeeuw	T								
Ivory Gull	<i>Pagophila eburnea</i>	Elfenbeinmöwe	Mouette blanche	Ivoormeeuw	B					X			
Arctic Tern	<i>Sterna paradisaea</i>	Küstenseeschwalbe	Sterne arctique	Noordse stern	B		X	X	X		X	X	
Common Guillemot	<i>Uria aalge</i>	Trottellumme	Guillemot de Troil	Zeekoet	B								
Brunnich's Guillemot	<i>Uria lomvia</i>	Dickschnabellumme	Guillemot de Brünnich	Dikbekzeekoet	B	X	X	X	X	X	X	X	
Black Guillemot	<i>Cephus grylle</i>	Gryllteiste	Guillemot à miroir	Zwarte zeekoet	B	X	X	X	X			X	
Little Auk	<i>Alle alle</i>	Krabbentaucher	Mergule nain	Kleine alk	B	X	X					X	
Puffin	<i>Fratercula arctica</i>	Papageitaucher	Macareux moine	Papegaaiduiker	B	X	X	X				X	
Barn Swallow	<i>Hirundo rustica</i>	Rauchschwalbe	Hirondelle rustique	Boerenwaluw	V								
White Wagtail	<i>Motacilla alba</i>	Bachstelze	Bergeronnette grise	Witte Kwikstaart	V								
Meadow Pipit	<i>Anthus pratensis</i>	Wiesenpieper	Pipit farlouse	Graspieper	V								
Wheatear	<i>Oenanthe oenanthe</i>	Steinschmätzer	Traquet moteux	Tapuit	B								
Blackbird	<i>Turdus merula</i>	Amsel	Merle noir	Merel	V								
Snow Bunting	<i>Plectrophenax nivalis</i>	Schneeammer	Bruant des neiges	Sneeuwgorst	B	X	X	X			X	X	
Redpoll	<i>Carduelis flammea</i>	Birkenzeisig	Sizerin flammé	Barmsijs	V								
Lapland longspur	<i>Calcarius lapponicus</i>	Spornammer	Bruant lapon	Ijsgorst	V								
Fieldfare	<i>Turdus pilaris</i>	Wacholderdrossel	Grive litorne	Kramsvogel	V								
Redwing	<i>Turdus iliacus</i>	Rotdrossel	Grive mauvis	Koperwiek	V								
Brambling	<i>Fringilla montifringilla</i>	Bergfink	Pinson du Nord	Keep	V								
Gyr Falcon	<i>Falco rusticolus</i>	Gerfalke	Faucon Gerfaut	Giervalk	V								

MAMMALS

English	Latin	German	French	Dutch	Breeding / Transient / Vagrant								
Walrus	<i>Odobenus rosmarus</i>	Walross	Morse	Walrus	B		X					X	
Bearded seal	<i>Erignathus barbatus</i>	Bartrobbe	Phoque barbu	Baardrob	B		X						
Ringed seal	<i>Phoca hispida</i>	Ringelrobbe	Phoque marbré	Ringelrob	B							X	
Harp seal	<i>Pagophilus groenlandicus</i>	Sattelrobbe	Phoque du Groenland	Zadelrob	T					X			
Hooded seal	<i>Cystophora cristata</i>	Klappmütze	Phoque à capuchon	Klapmuts	V					X			
Common /Harbour seal	<i>Phoca vitulina</i>	Seehund	Phoque commun	Gewone zeehond	B		X						
Minke Whale	<i>Balaenoptera acutorostrata</i>	Zwergwal	Petit rorqual	Dwergvinvis	T			X	X			X	
Sei Whale	<i>Balaenoptera borealis</i>	Seiwal	Rorqual boréal	Noordse vinvis	V								
Blue Whale	<i>Balaenoptera musculus</i>	Blauwal	Baleine bleue	Blauwe vinvis	T								
Fin Whale	<i>Balaenoptera physalus</i>	Finnwal	Rorqual commun	Gewone vinvis	T								
Humpback Whale	<i>Megaptera novaeangliae</i>	Buckelwal	Baleine à bosse	Bultrug	T								
Bowhead whale	<i>Balaena mysticetus</i>	Grönlandwal	Baleine du Groenland	Groenlandse walvis	T								
Sperm Whale	<i>Physeter macrocephalus</i>	Pottwal	Cachalot	Potvis	V								
Narwhal	<i>Monodon monoceros</i>	Narwal	Narval	Narwal	V								
Northern Bottlenose Whale	<i>Hyperoodon ampullatus</i>	Entenwal (Dögling)	Hyperoodon arctique	Butskop	V								
Orca (Killer Whale)	<i>Orcinus orca</i>	Schwertwal (Orca)	Orque	Orka	V								
White-beaked Dolphin	<i>Lagenorhynchus albirostris</i>	Weisschnauzendelphin	Lagénorhynque à rostre blanc	Witsnuitdolfijn	V								
Beluga	<i>Dezhnevius leucas</i>	Weisswal	Béluga	Beloega	B								
Polar Bear	<i>Ursus maritimus</i>	Eisbär	Ours blanc	Ijsbeer	B					X			
Arctic Fox	<i>Alopex lagopus</i>	Polarfuchs	Renard polaire	Poolvos	B								
Spitsbergen Reindeer	<i>Rangifer tarandus platyrhynchus</i>	Svalbard Renntier	Renne du Spitzberg	Rendier	B		X	X	X		X	X	

Sibling vole	<i>Microtus rossiaemeridionalis</i>	Südfeldmaus	Campagnol des champs	Oostelijke veldmuis	B								
Short tailed Vole	<i>Microtus agrestis</i>	Erdmaus	Campagnol agreste	Aardmuis	B								

Philipp Schaudy – Expedition Leader



It all started on this memorable 24th of December 1973. It was cold and snow was falling on the Austrian city of Graz. I instantly loved that. Immediately I decided to become a polar explorer but managed only to be a Christmas tree vendor in front of a supermarket in my early years.

That was a dead-end job, so I packed my rucksack and tried to find happiness abroad. I bicycled across continents, climbed mountains, paddled rivers. “To be on the road” was my motto. I took pictures of everything, gave public talks and told the audience about my

adventures.

Along the way I finished studies to become a Geographer. Not so easy with my drive to travel.

And then the addiction to the North. Again and again. Scandinavia, Iceland, Canada, Alaska and – more than 20 years ago – for the first time Spitsbergen. Suddenly I felt at home and stayed there for several years together with my wife.

Eventually we had seen enough polar nights and broke camp. Still plenty of virgin soil ahead of us. Greenland, the Russian Arctic, the North Pole, the deep South – Antarctica – and a lot in between.

Today I live with my family at 750 meters above sea level in a small village near Graz. A place where snow is falling at Christmas. Nevertheless, I am back in the Arctic every summer. Sure thing!

Michelle van Dijk – Assistant Expedition Leader



Is nearly an Arctic local, since she is the owner of Longyearbyen Camping, world's northernmost camping site. Working as a guide, this campsite has been her home base since 2004.

Living in a tent, she spends three months a year on Spitsbergen guiding day trips, trekkings & expedition cruises. These days she mainly works on ships, as guide or expedition leader.

She believes that there is no better way to get closer to a place than to work there – she has also lived in Sweden & Iceland. Her first visit to Spitsbergen was back in 2001 and instantly she fell in love with this remote archipelago.

Although she picked plants as her specialism, Michelle is a generalist. She took the course Arctic & Antarctic studies at Groningen University and in 2015 she published a book about Sjef van Dongen, who took part in the rescue operation after Nobile's airship crashed in 1928.

Together with Rolf Stange she wrote a Dutch guide book for Spitsbergen-Svalbard. This was first published in 2020.

Michelle has been working as a guide in Antarctica, the Falklands, Faroe Islands, Greenland, Hebrides, Iceland, Jan Mayen, Norway, South Georgia, Spitsbergen and Sweden.

You can talk to her in different languages, but she will only reply in Dutch, English, German or Swedish.

Eduardo Rubio-Herrera Exp. Guide



I describe myself as an astronomer by profession with a passion for sharing nature with others.

After studying physics, I got my PhD in Astronomy from the University of Amsterdam in 2010. After a postdoctoral position I became a lecturer of physics and Astronomy as well as a guide in expedition cruise ships. Since 2018 I have been working for Oceanwide Expeditions in the Antarctic and in the Arctic in several roles including guide, Assistant Expedition Leader and Expedition Leader in the Arctic and the Antarctic. Today besides working for Oceanwide I split my time teaching

undergraduate students and making astronomy outreach at the largest planetarium of Switzerland at the Swiss Museum of Transport in Lucerne.

My interests vary from history of exploration to the intricacies of astronomy. During the trips I have undertaken, I offer lectures about polar explorers, the science carried out in Antarctica (astronomy in particular), about our Universe, and the mysteries of our ocean's depths, to mention some. At sea, besides being an engaged guide and lecturer, I love to show constellations to people, pointing out their names and their lore. In every trip I made, I always aim to raise the enthusiasm of guests towards science, and their awareness towards the unique and fragile planet where we live. Born in Guatemala (1978), I speak English, Spanish and German.

Koen Hoekemeijer – Exp. Guide



Koen Hoekemeijer was born in 1974 in The Netherlands. When it comes to nature and wildlife Koen was quite a late bloomer as he had always been more into nightlife and sunny beaches. But that all changed when he discovered his passion for wildlife and photography in 2009 in Costa Rica. It was during this trip that Koen saw his first humpback whales and he fell in love with them instantly. Not only did it make him eager to see more and different types of whales in locations all over the world, but he also wanted to learn to take better photos of these amazing creatures. And with the love for whales

and photography, came a broader passion for all sorts of wildlife.

Since that memorable vacation in 2009, Koen has been travelling the planet to see and photograph the world's most beautiful places. Usually from boats, jeeps or simply face down in the mud, but since 2016 also underwater. Snorkeling in the presence of whales and orcas is bringing Koen pure happiness.

Among his favourite animals are whales, orcas, penguins, tigers and jaguars. But in between safaris, he also likes to do street photography and capture life and portraits of people all over the world.

Koen believes that travelling does not only enrich your life, it also makes you more humble, more appreciative and it provides new levels of perspective and understanding. Koen has won the prestigious WWF Frans Lanting Photo contest, and in 2020 he won the Ellen Fitzgibbon Memorial Photography competition. It's Koen's dream to one day have a Vizsla dog and own a small cabin somewhere in northern Norway surrounded by snow and trees ;).

Valeria Sainz Herrera – Exp. guide



Valeria Sainz Herrera is an Argentine photographer. She grew up in Buenos Aires, capital of Argentina. Throughout the years she has found that one of her greatest passions is to travel to the wildest and remotest places around the world. So, traveling as much as she could, she found in the photography, a profession that gives her the freedom to know and live in different locations.

Nowadays she spends her life between “the poles”, working as a guide for Oceanwide Expeditions, and during the rest of the year you could find her in a beautiful island names Ilhabela in Brazil,

working in tourism area.

Living in different countries allows her to learn and practice many activities that she enjoys, especially in natural environments, like rock climbing and skiing in the Argentinian Patagonian Andes or camping and hiking in the central region of Argentina and, in Brazil, she learned other kinds of sports like scuba diving, kayaking and sailing.

She is also particularly interested in the history of the expeditions that discovered and mapped some of the places we are about to visit. This gives her the chance to share fascinating stories on board.

The Antarctic and The Arctic were always a dream of her, and now are part of her life.

Karoline Bælum Exp. Guide



Karoline came to Svalbard as an undergraduate geology student in 2001 and stayed for 23 years. She holds a master's degree in glaciology and a PhD in geology.

In addition to guiding part time since 2002 she has worked both at the University Centre in Svalbard as a scientist and as a senior advisor for the Norwegian Research Council. She has guided trips for Oceanwide in Svalbard, Greenland, and Antarctica since 2007.

Together with her son, partner and 7 dogs she overwintered 3 times at Farmhamna Trapper station in Forlandssundet, trapping, hunting and fishing. When not working you can find her out with the dogs, up on a glacier or training with the Red Cross Avalanche rescue team.

Working and guiding in the Polar regions is geoscientists dream as most of the landscape consists of rocks and ice.

Stefanie Liller – Expedition Guide



Steffi Liller was born in Offenbach, Germany in 1978. After completing her apprenticeship as a biology lab technician at the Paul-Ehrlich-Institute in Langen, Germany, she earned a degree in Biology and Meteorology at the Universities of Darmstadt and Freiburg in Germany. Alongside her studies and her love of nature, Stefanie developed an interest in and a passion for skydiving. This eventually changed from being a hobby to her profession. While working at drop-zones and indoor skydiving facilities throughout central Europe, Stefanie enjoyed sharing her passion for the sport with other people.

A large part of her career was spent as a coach. It was always very important to her to make her own skills available to people curious and interested, and to look after their safety and lasting enjoyment in the sport. Starting in 2011 she managed several indoor skydiving facilities in Germany and Austria. In addition to her professional career, Stefanie is an avid world-traveler by foot or public transport. While exploring various landscapes and communities on all seven continents, she enjoys sharing her experiences and unique moments with others. Since 2017 Stefanie has been working as an independent coach in skydiving and indoor skydiving and guide or lector on several vessels in remote areas. Stefanie has chosen Vienna, Austria as her home base, and lives there in between trips.

Clara Iachetti – Expedition Guide



Clara is Argentinean, who is born in Buenos Aires. Since she was a child Clara loved the ocean and the adventure. In 2011 she obtained her bachelor's Marine Biology-oriented degree in Biological Sciences, at the Universidad de Buenos Aires and a European M.Sc. in Marine Environment and Resources (MER) in 2012. Since 2012 she has been working in the Austral Centre of Scientific Investigations (CADIV- CONICET) at Ushuaia, Tierra de Fuego (Argentina). Firstly, on her PhD on plankton dynamics, then with her postdoctoral project on harmful algal blooms, and

nowadays as a researcher at CADIC. For the last 10 years she has participated of several research expeditions to the South Atlantic and Antarctica, even spending some time in the Shetland Islands, at the Argentinean Base "Carlini".

On top of her scientist career, she is a member of Beagle Secretos del Mar, a non-profit organisation that supports marine conservation in which she is responsible for the education program, lecturing and diving. Living in Ushuaia (and previously in Bariloche) has also led her passion towards mountaineering, mainly backcountry skiing and climbing.

Marije van Zanten – Ships Doctor



Marije has been practicing Medicine since 2007. She is a certified General Practitioner and her work includes the full range of family medicine. She owns a practice in Flevoland, the Netherlands. She has also worked in Internal Medicine for several years.

Since childhood, Marije has been interested in nature. Before her medical degree, she earned a Master's degree in Biology. She lives in Amsterdam and in her free time she likes to go cycling, mountain biking, or visit concerts with friends.



Welcome aboard!

Day 1, Tuesday 24th June 2025

16.00 **Embarkation.** Once you have found your cabin, please feel free to explore the ship.

When all are on board

Introduction to the ship and **mandatory safety and lifeboat drill** in the Lounge/Bar – Deck 5. Please listen to announcements.

Thereafter Plancius is heaving anchor. We are ready to cast off.

Thereafter **We invite you to our Welcome Aboard Briefing** in the Lounge/Bar on Deck 5. Please listen to announcements.

19.30 **Dinner** is served in the Dining Room. Enjoy your meal.

Thereafter You will get your **rubber boots** in the boot-room (Deck 3 forward). Listen to **announcements** – we will call you by deck.

*Let us probe the silent places, let us seek what luck betide us;
Let us journey to a lonely land I know.
There's a whisper on the night-wind, there's a star agleam to guide us,
And the wild is calling, calling . . . let us go.*

Robert Service, The Call Of The Wild



DAILY PROGRAM


KROSSFJORD

Day 2 | Wednesday 24th June 2025

- 07.15** **Wake up call.** A wonderful good morning!
- 07.30** **Breakfast** buffet for **one hour** in the Dining Room.
- 08.30** **Mandatory** briefing in the lounge on how to behave in **Polar Bear country** and how to get ashore (and back) safely with our **rubber boats** (Zodiacs).
- thereafter** **Landing: Möllerfjord, Tinayrebukta.** Today we wake up in pretty Krossfjorden, and plan to get ashore in the bay of Tinayrebukta. It is an easy landing and a good place for our first steps in Svalbards wilderness.
- 12.30** **Lunch-Buffer** for one hour in the Dining Room.
- 14.30** **Landing: Krossfjord, Signehamna.** After lunch, we plan to land at Signehamna on the west side of Krossfjord. In our hiking groups we invite you to explore the country. A bit inland are the remains of the German weather stations “Knospe” and “Nussbaum”, which were used in the years 1941 and 43. The topography is undulating but generally easy.
- Thereafter** **Ships cruise: Lilliehöökreen.** Before dinner we will sail to magnificent Lilliehöökreen, to see the massive glacierfront from the ship, before we are heading north again.
- 19.00** **Recap of today and briefing** for tomorrow.
- 19.30** **Dinner** is served. Bon Appetite!

*A journey is a person in itself; no two are alike.
And all plans, safeguards, policies and coercion are fruitless. We find after
years of struggle that we do not take a trip;
a trip takes us.*

John Steinbeck (1902 - 1968)



DAILY PROGRAM

LIEFDEFJORDEN

Day 3 | Wednesday 26th June 2025

- 07.15 Good morning! **Wake up call.**
- 07.30 **Breakfast** buffet for **one hour** in the Dining Room.
- 09.00 **Zodiac-Cruise: Monacobreen, Liefdefjorden.** Today's morning we will spend in the innermost part of Liefdefjord (Love-Fjord), one of the most picturesque fjords of northern Spitsbergen. We plan a Zodiac-Cruise along the impressive glacier-front of Monacobreen. Please dress warmly, we are not getting ashore.
- 12.30 **Lunch** is served in the Dining Room. Enjoy your meal.
- 14.30 **Landing: Texas Bar, Liefdefjorden.** This afternoon we want to get ashore on the northern side of Liefdefjorden, at a small trapper's cabin called "Texas Bar". We will split into groups and explore the landscape in different walking groups. Except for the strenuous hike, walking here is relatively easy.
- 18.30 **Recap of today and briefing** for tomorrow.
- 19.00 **Dinner** is served in the Dining Room. Bon Appetite!

What is the secret of the Arctic?
You must live through the long night, the storms, and the destruction of
human pride.
You must have gazed on the deadness of all things to grasp their livingness.
In the return of the light, in the magic of the ice, in the life-truths of animals
observed in the wilderness...
lies the secret of the Arctic and the overpowering beauty of its lands.

Christiane Ritter (1898-2000). A Woman in the Polar Night



DAILY PROGRAM

HINLOPENSTRETET

Day 4 | Friday 27th June 2025

- 07.15 Good morning! **Wake up call.**
- 07.30 **Breakfast** buffet for **one hour** in the Dining Room.
- 09.00 **Zodiac cruise: Alkefjellet.** This morning we would like to visit the “Auk Mountain”, so named due to the enormous number of Brünnich’s guillemots breeding along these 100m high basaltic cliffs. We intend to do a Zodiac cruise following the whole spectacular cliff. Please **dress warm**, we are not getting ashore.
- 12.30 **Lunch** buffet for **one hour** in the Dining Room. Enjoy your meal.
- 15.00 **Landing: Kinnvika, Murchisonfjord.** This afternoon we plan to go ashore on Nordaustland, the second largest island of the Svalbard archipelago. We will land at the old Swedish–Finnish research station, that was used 1957-1958. Ten buildings are still standing and also some of the equipment can still be seen.
We are now in the polar desert of Nordaustland. After seeing the historic site, we plan to explore this unique landscapes in our well known three hiking groups. Walking is easy.
- 18.30 Daily **recap & briefing** for tomorrow.
- 19.00 **BBQ** on the back deck! Enjoy and bring your dancing rubber-boots 😊.

"We need the tonic of wildness... At the same time that we are earnest to explore and learn all things, we require that all things be mysterious and unexplorable, that land and sea be indefinitely wild, unsurveyed and unfathomed by us because unfathomable. We can never have enough of nature."

Henry David Thoreau (Walden: Or, Life in the Woods)



A DAY IN THE PACK ICE

Day 5 | Saturday 28th June 2025

Expedition day in the pack ice! North of Spitsbergen we will encounter the pack ice, a spectacular Arctic Wonderland. Please join us on deck in the search of wildlife – it is a brilliant experience unto itself to navigate in the polar pack.

If we have the luck to encounter polar bears, please **keep noise levels low** (voices down; close doors gently) for the best opportunities of finding and remaining with it.

- 07.30** **Pack-ice-sleep-in** 😊.
- 07.45** **Breakfast** buffet for **one hour** in the Dining Room.
- 12.30** The **lunch-buffet** is waiting for us in the Dining Room. Enjoy your meal.
- 18.30** **Recap** of today and **briefing** for tomorrow in the lounge.
- 19.00** **Dinner** is served! Enjoy 😊.

BE A SEAGULL
Take the breath
Of the wings of morning
Lift your eyes
To the canyons
Of the skies
And fly!

Richard Bach, 1970, Jonathan Livingston Seagull



RAUDFJORD

Day 6 | Sunday 29th June 2025

- 07.15 A wonderful good morning! **Wake up call.**
- 07.30 **Breakfast** buffet for **one hour** in the Dining Room.
- 09.00 **Landing: Alicehamna.** During lunch we are sailing into Raudfjord, where we plan to get on shore close to an old trappers cabin at Alicehamna, to discover an area that already has been known (and used) since the whaling period, 400 years ago. There will be different hiking groups.
- Bring your swimsuit.** If you ever wanted to take a swim in the Arctic ocean, this is your chance at the end of our landing. We bring towels. Enjoy!
- 13.00 **Lunch** buffet for **one hour** in the Dining Room. Enjoy your meal.
- 15.00 **Landing: Buchananhalvøya.** During lunch we are sailing further into Raudfjord, where we plan to get ashore on the peninsula Buchananhalvøya, to explore the harsh landscapes of Northwest-Spitsbergen in different hiking groups. The terrain is partly difficult and a mix of boulders, sand and tundra.
- 18.30 Daily **recap & briefing** for tomorrow.
- 19.00 **Dinner** is served in the Dining Room. Enjoy!

*something feels so cold against my skin
the coldness goes so well with the state i'm in
barefoot in the snow
what do you do
where do you go
barefoot in the snow*

*part of a song by Susi varming
(Norwegian artist, grew up in Longyearbyen)*



DAILY PROGRAM

FORLANDSUND & ISFJORD

Day 7 | Monday 30th June 2025

- 07.15** **Rise and shine.** Wake up call.
- 07.30** Let's get a bite. **Breakfast.**
- 09.00** **Landing: Poolepynten.** Today we will wake up in Forlandsund. The long sandy beach of Poolepynten (on Prins Karls Forland) is one of the places, where walrus often are found resting. If our friends are at home, we will visit the animals in two groups. **Both groups will get the same amount of time with the walrus.**
- First five boats:** We are **going for a short walk.** After that we visit the walrus.
- Second five boats:** We are **going to the walrus first.** After that we go for a short walk. If you are in this group, there will be the possibility to get back to the ship right after the walrus-visit.
- 12.30** **Lunch** is waiting for us.
- 15.00** **Landing: Alkhornet, Isfjorden.** This afternoon we intend to land at picturesque Alkhornet in the bay Trygghamna (west of Ymerbukta). We find lush vegetation, birdlife, reindeer and maybe even a polar fox. It is a great place to roundup an extraordinary voyage.
- 18.30** **Farewell Cocktail with the Captain & last official meeting.** Please join us for a toast on our voyage!
- 19.30** **The Last Supper.** Bon Appetite!

"Where does the white go when the snow melts?"

Author unknown



DAILY PROGRAM

LONGYEARBYEN

Day 8 | Tuesday 01st July 2025

07.15 For a last time: **A wonderful good morning.**

Important: Please put your check-in luggage into the corridors before you go to breakfast – latest at 07.45. The crew will bring it on shore. Please **identify your luggage** on shore, to be sure it's off the vessel and bring it to your luggage truck.

Blue tags: All booked on SK4491 at 10:45 – your luggage goes to a luggage truck.

Yellow tags: All booked on SK4497 at 19:35 – your luggage goes to a luggage truck.

Red tags: All staying in Longyearbyen – your luggage comes with you on the bus.

07.30 **Breakfast is available** in the restaurant.

Thereafter **Last landing: Longyearbyen.**

08.45 **The bus to the airport is leaving.**

09.00 **The bus to Longyearbyen is leaving.**

17:30 **The bus from Longyearbyen to the airport** is leaving from the central parking lot. Your luggage will be delivered by the luggage truck.

On behalf of Captain, Crew and Staff, have a safe journey home!

Have you suffered, starved and
triumphed,
grovelled down, yet grasped at glory,
Grown bigger in the bigness of the
whole?

"Done things" just for the doing,
letting babblers tell the story,
Seeing through the nice veneer the
naked soul?

Have you seen God in His splendours
heard the text that nature renders?

The simple things, the true things,
the silent men who do things --
Then listen to the Wild -- it's calling
you.

Robert William Service „Call of the
wild“