



North Spitsbergen Explorer – Basecamp

Longyearbyen – Longyearbyen

26th June 2025 – 03rd July 2025

On board *m/v Ortelius*



M/V Ortelius was built in 1989 in Gdynia, Poland as a special-purpose research vessel for the Russian Academy of Science. She was originally named “Marina Svetaeva” after a well-known Russian poet. The vessel was purchased by Oceanwide Expeditions in 2011, re-flagged in The Netherlands, and re-named Ortelius. She was extensively re-fitted in 2019 and complies with the latest SOLAS-regulations (Safety Of Life At Sea). *M/V Ortelius* is 91.25 m long, 17.2 m wide and has a maximum draft of 5.4 m. She has ice class UL1 (Equivalent to 1A), 10.5 knots average cruising speed and propulsion is 6 ZL 40/48 SULZER. Ortelius is named after the Dutch cartographer Abraham Ortelius (1527-1598) who published the first modern world atlas, the *Theatrum Orbis Terrarum* (Theatre of the World) in 1570. Her home port is Vlissingen.



Captain Remmert Koster

[The Netherlands]

and his international crew of 55

Chief Officer:	Sjoerd Van Hoek	[The Netherlands]
Second Officer:	Warren Villanueva	[Philippines]
Third Officer:	Ian Vincent	[Philippines]
Chief Engineer:	Alexander Bondarev	[Ukraine]
Second Engineer:	Jhunwel Yuzon	[Philippines]
Hotel Manager:	William Barnes	[The Netherlands]
Assistant Hotel Manager:	Bogdan 'Bobi' Manevski	[Macedonia]
Head Chef:	Ivan Yuriychuk	[Ukraine]
Sous Chef:	Felix Lobo	[India]
Sous Chef:	Sergiy Sklyarov	[Ukraine]
Bosun:	Eniano Agarin	[Philippines]
Bosun:	Philip Malang	[Philippines]
Bartender:	Jake Montevirgen	[Philippines]
Ship's doctor:	Kenneth Lo	[Hong Kong]
Expedition Leader:	Adam Burke	[United Kingdom]
Assistant Expedition Leader:	Allan White	[United Kingdom]
Expedition Guide:	Marco Rosso	[Italy]
Expedition Guide:	Marcelo Tarapow	[Argentina]
Expedition Guide:	Gabi Kolodko	[Poland]
Expedition Guide:	Martin Anstee	[United Kingdom]
Expedition Guide:	Matt Cheok	[Australia]
Expedition Guide:	Aitana Forcén Vazquez	[Spain]
Expedition Guide:	Rao Xingpeng	[China]
Expedition Guide:	Koen Jongerling	[The Netherlands]
Kayak Leader:	Kelly Pearson	[United Kingdom]

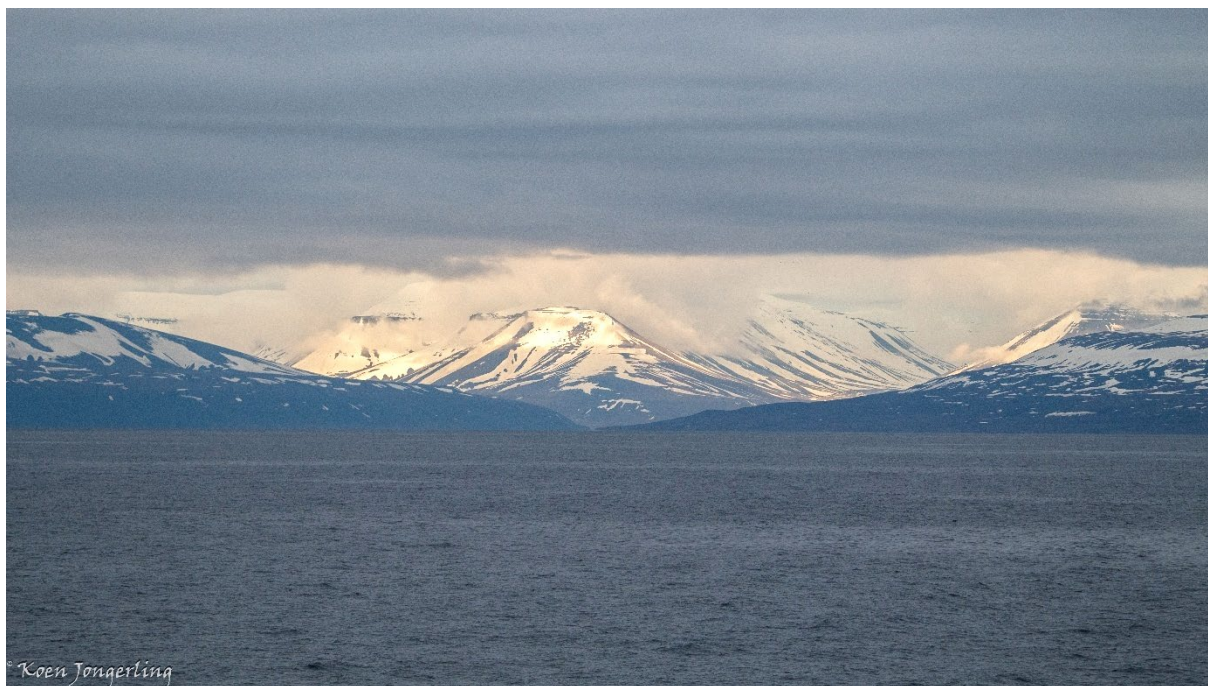
WE WELCOME YOU ON BOARD!

Day 1 – Thursday June 26th. Longyearbyen, Embarkation Day.

18:00 GPS Position: 78° 14.5' N / 014° 57.7' E

Wind: S-3 • Sea: Calm • Weather: Overcast • air: 5°C • sea: 4°C

Here comes the day of the beginning of our Arctic adventure aboard *Ortelius*. Throughout the entire day the sun had shone in Longyearbyen, a perfect setting for our departure. At 4pm we all gathered at Bykaia on pier A to wear our lifejackets and get onto the Zodiac for our first shuttle to the ship.



One by one, we ascended the gangway, greeted by brilliant sunshine and the crisp, revitalizing Arctic air. A wave of excitement buoyed us through those first moments aboard as we wandered the ship, occasionally turning a corner only to find ourselves delightfully lost in its maze-like corridors. Before long, we were warmly welcomed by Adam, our Expedition Leader, and William, the Hotel Manager. As guests began to settle into their cabins, Captain Remmert was introduced and raised his glass in a signature toast to each of us, setting a wonderfully warm and welcoming tone for the voyage ahead.

Once everyone was on board, we assembled for the mandatory safety drill. Donning our lifejackets, we gathered at the muster station before making our way up to the top deck. As *MV Ortelius* slowly pulled away from the harbour, northern fulmars joined us, effortlessly gliding alongside the ship. The moment of departure had truly arrived, and a shared sense of excitement buzzed in the crisp Arctic air. The sense of departure was real now, and excitement filled the air.



Our first dinner together really set the vibe for the trip; plentiful, tasty, and full of laughter. The dining room was buzzing with chatter as we piled our plates from the buffet. The giant steaks were a hit, quickly becoming the centre of light-hearted jokes about how much weight we might end up gaining by the end of the voyage.

After dinner, we headed to the lecture room for the much-talked-about boot party. We got fitted with our rubber boots, accompanied by music and the smiles of our staff.

Just as we were starting to settle into the rhythm of ship life, excitement struck again. A fin whale—and not long after, a blue whale—was spotted off the bow. We all rushed outside, hearts pounding, and watched in awe as these massive creatures surfaced gracefully in the distance. It was an unforgettable, magical welcome to the adventures ahead.



Day 2 – Friday June 27th. Ny Londen and Ny Ålesund

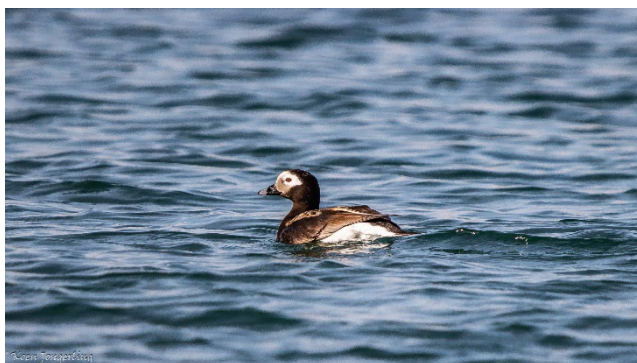
12:00 GPS Position: 78° 57.3' N / 012° 02.2' E

Wind: NW-3 • Sea: Rippled • Weather: Part. Cloudy • air: 6°C • sea: 4°C

Today was our first expedition day. A day of mandatory briefings and many first sightings of animals. We started the day early with our breakfast at 07:00. This way we could start our briefings nice and early to create time for excursion of the ship. We first had to learn about Zodiac and polar bear safety. We learned that falling in the water is not a good option and that we want to prevent that from happening in many ways. Also, that the flora and fauna on Svalbard is vulnerable and that we must listen to certain rules to keep it as pristine as possible. After everything was explained and hopefully clear for everybody, we were ready to test all that new knowledge in the field.



At 10:30 the expedition team was ready to take guests out on their first zodiac cruise. The ship was anchored near to Ny Londen. A site that is known for a marble mine called Camp Mansfield. At least, an intend to marble mining. The charismatic gentlemen, Ernest Mansfield, had convinced people to invest in this project. Together with the Northern Exploration Company, he started mining marble in 1910. Sadly, it was of a very poor quality and the mine was closed in 1913. Luckily, a bit further from the ruined buildings there is an amazing coastline and scenery around the old mine.



We followed the coastline exploring small marble caves and spotting many different kinds of birds. Some of these were the long-tailed duck, the common eider duck and the glaucous gull. Getting towards the end of our Zodiac cruise we saw a female Reindeer with a young calf near to the coastline and we got a spectacular view of the Conway Glacier. The way back to the ship was fast and smooth as the Zodiacs

were gliding over the milky waters inside of the Kongsfjord.



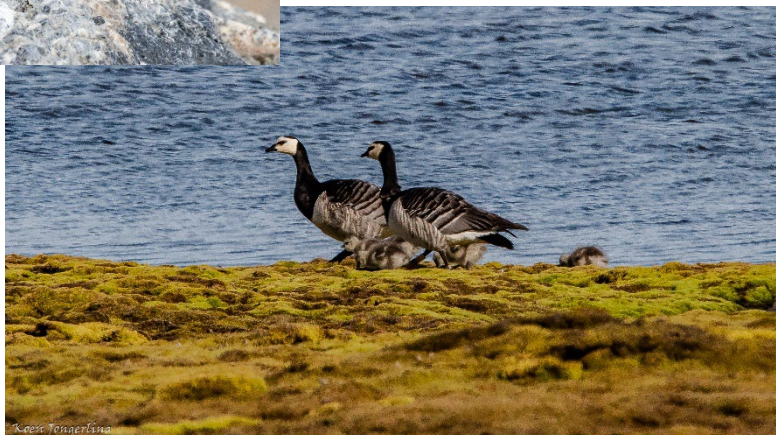
Nobody thought they were ready for lunch after having eaten so much for breakfast but, lunch was certainly welcome again. It was only a short break for lunch as we had an early standby time for our afternoon landing.

During the afternoon we visited the town of Ny Alesund. This is one of the most northern towns in the world and is filled with scientists. As some of the scientists are doing research on distant stars and constellations, we were asked to turn off our Wifi and Bluetooth to not interfere with their research. We entered the town by a jetty where we could land by Zodiac.



Everybody was allowed to explore the town by themselves. There were multiple attractions to visit like the museum, the post office and a souvenir shop. Nature-wise, you could get near to a lake that was surrounded by many types of birds. Mainly barnacle geese with goslings

but a pair of red throated divers also swam around. In the back of town there was a dog kennel from where you could look into a bay that had many harbour seals swimming around. In the middle of the town there was a large statue of Roald Amundsen bust. The famous explorer that tried to get to the North pole



from Ny Alesund during the 1920's. Amundsen together with Nobile were the main heroes in the story told by Gaby and Marcelo later at the mast, a large post to which the airship "Norge" was connected during both expedition in 1926 and 1928. An interesting story that only gets better when told by enthusiastic and passionate guides.



After this landing we started heading out of Kongsfjorden and got ready for Recap. Here we heard the plans for the next day from Adam. Most importantly, the weather looked good again. Kelly explained to the people in the first and second kayaking groups what was going to happen during the activity. We got to learn a lot from Martin about the Barnacle geese and Marcelo told us a little about the history of Svalbard.

After dinner we got to experience a smooth sea and to enjoy warm sunrays. Those who wanted to know more about photography were invited to join Matt in the lounge to get some tips and tricks. A full first day of activities. We could not wait for the adventures of the next day to start.

Day 3 – Saturday June 28th. Ytre Norskøya and Smeerenburg

12:00 GPS Position: 79° 51.4' N / 011° 41.6' E

Wind: NE-3 • Sea: Rippled • Weather: Clear • air: 6°C • sea: 3°C

Another amazing day was waiting for us! *Ortelius* stopped her engine close to a colourful Ytre Norskøya Island (Outer Norwegian) where a hill was waiting for us to climb it all the way to the top. Green moss, purple and tufted saxifrage were alongside our path. A couple of Arctic foxes gave us the welcome and suddenly disappeared for a while. Adam and the Expedition team secured the perimeter with a quick and efficient scouting.



Ytre Norskøya, located off the northwest coast of Spitsbergen in Svalbard, holds significant historical importance as a key site during the height of Arctic whaling in the 17th century. It served as a Dutch whaling station from around 1614, with the island's high ridge used as a lookout point to spot whales offshore. Remnants of blubber ovens, whalebone, and over 100



graves from that era still remain, offering a poignant glimpse into the harsh and often short lives of early whalers.

Everyone set foot on the island and headed up alongside the ridge to conquer a magnificent vantage point where the views could extend all the way from the western to the eastern coast of Spitsbergen and towards the Arctic ocean to the North. Lots of pictures were made taking advantage of the wonderful weather conditions: calm sea and blue cloudless skies.



After a short rest and lunch onboard the ship, we were ready for the next experience—visiting the walrus haul-out on a beach in Smeerenburg. They didn't smell so great, but even so, all of us quietly enjoyed observing these muscular beauties and their impressive tusks from a respectful distance, standing in near-religious silence.

Walrus are truly fascinating creatures. These large marine

mammals can weigh over a ton and a half, and their long, curved tusks, used for defense, dominance, and helping them haul out onto ice make them instantly recognizable. Social by nature, walrus often gather in large, noisy groups, but we were lucky enough to witness a more peaceful scene as they rested on the shore. It was a special opportunity to observe them in their natural habitat, a reminder of just how wild and raw the Arctic still is.



Having had enough time for a zodiac cruising, we sailed to the southwest reaching Virgohamna located on the northern shore of Danskøya. We saw the remains of a very old whaler station and also the place from where Salomon Andrée took off with Nils Strindberg and Knut Frænkel onboard the "Örnen" ("Eagle"), a balloon full of hydrogen in a dramatic failed attempt to fly to the North Pole.



When we were thinking about going back to the ship, an unexpected guest showed up not too far and took us by surprise. Our first polar bear of the trip, presented itself walking ominously alongside the island of Albertøya, climbing a rocky ridge it stood proudly against a dramatic glacial landscape and eventually ended up in the water swimming towards Smeerenburg. Our fellow companions were quickly evacuated from the landing site by the Expedition team and joined the rest of us in the water to observe the king of the Arctic from a safe and respectful distance.



What a conclusion for a perfect day in Svalbard; history, landscape, wildlife, great weather and good memories during our second day of expedition.

Day 4 – Sunday 29th June. Drifting Pack Ice in Northern Svalbard

12:00 GPS Position: 81° 36.1' N / 021° 11.3' E

Wind: ESE-4 • Sea: Calm • Weather: Clear • air: -1°C • sea: 0°C

We woke this morning to another gentle wakeup call from Adam, many of us are very taken with his quiet, soothing accent. A quick look outside revealed another stunning day, bright sunshine and a gentle breeze, perfect for our day amongst the sea ice.



As breakfast was served we got ever closer to the ice edge and as breakfast came to an end we arrived in amongst the ice, perfect timing! Captain Remmert and his very capable bridge team

steered us through the ice, the colours and the patterns of the ice floes were extraordinary. The sky was blue with just a hint of a few wispy clouds. The expedition team were either on the bridge or out on deck looking for wildlife, a number of seals were seen, Ringed and Bearded seals were the species noted, the birds were also seen in good numbers: Kittiwakes, Northern fulmar and Brünnichs guillemots were probably the most abundant but a couple of stunning Ivory gulls that were seen over the course of the day received special attention.



At 11am Marco gave a fascinating lecture about sea ice formation including its dynamics in the Arctic basin and the future scenario that might approach at the end of the century. That was followed by another great lunch, today was burger day, the burgers were so good that some people had three!



After lunch and the inevitable nap, for some, it was time to get out on deck again to look for more wildlife. The weather hadn't changed, it was still sunny but you did have to wear a few layers to stay warm. Matt led a photo workshop for those interested and Kelly gave out kayak equipment for the next morning.

At 3.30 Martin gave an informative presentation about the birds of Svalbard and The

Arctic. There are so many interesting birds breeding up here in The Arctic.

That was swiftly followed by hot chocolate on deck 7 behind the bridge and for those that wanted, a little tot of rum to warm them up.



The views of the sea ice in every direction to the horizon from the top deck was very special.

The time for recap soon came around where we were told of the plans for the next day. Another delicious dinner was served and we had a chance to chat with our new friends as we steered away from the ice and started heading back south towards Svalbard.

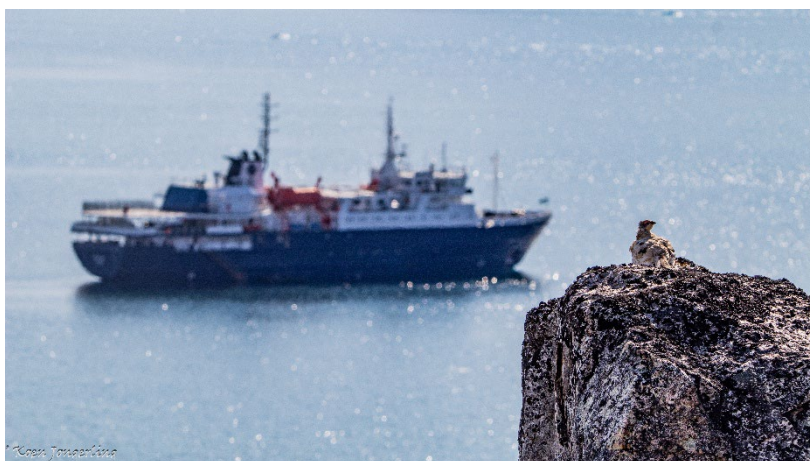
Day 5 – Monday 30th June. Texas Bar and Monacobreen

12:00 GPS Position: 79° 34.5' N / 012° 43.5' E

Wind: E-2 • Sea: Calm • Weather: Clear • T_{air}: 8°C • T_{sea}: 3°C

During the night, the *MV Ortelius* made remarkable progress, and by early morning, she was gliding across Woodfjorden—one of the most breathtaking fjords along the northern coast of Spitsbergen. Calm seas and clear skies greeted us as we navigated into Liefdefjorden, named after the Dutch ship *De Liefde* ("Love").

Right after breakfast, the staff went ashore to scout the area and ensure it was safe for all of us to land at Texas Bar. We then split into three groups. The first group, led by Koen and Marco, set off at a brisk pace and reached two fantastic vantage points offering sweeping views of the entire fjord, stretching southward to the impressive ice front of Monacobreen.



The second group, guided by Matt and Aitana, enjoyed a leisurely hike along the shoreline, discovering scenic lakes fringed with summer blooms like purple saxifrage and mountain avens. Meanwhile, the third group stayed near the landing site, exploring the area around the historic hut built by Hilmar Nøis in 1926.

It was the perfect day for a hike—rich in historical facts, glacial landscapes, and incredible views of this spectacular fjord. At the end of the morning, the activity concluded with enthusiastic participation in the Polar Plunge.





After a quick lunch, we embarked on an incredible three-hour Zodiac cruise between the fronts of Seligerbreen and Monacobreen. These two impressive tidewater glaciers discharge vast volumes of ice into the fjord, and the glacial plumes, formed by subglacial meltwater flowing between the glaciers and the bedrock were clearly visible. These plumes stirred up the water, creating ideal feeding conditions for the hundreds of kittiwakes and Arctic terns that were enjoying a plentiful feast.



Driven by gravity, glaciers flow as ice deforms and slides over the ground, often helped by meltwater at the base. They gain mass from snowfall and lose it through melting or calving. The balance between these processes determines whether a glacier advances, retreats, or stays the same, making them important indicators of climate change.

On a sunny day, the glacier front of Monacobreen is a breathtaking sight. Its towering ice cliffs shimmer in shades of blue and white, contrasting sharply with the deep turquoise waters of the fjord. Sunlight highlights the intricate textures of the ice—serrated edges, deep crevasses, and vertical cracks hinting at recent calving events. Occasional rumbles echo across the water as chunks of ice break off and plunge into the sea. That was what we could take in during our wonderful afternoon in this place.



Back on the ship it was time for the next day's plan, with addition from Matt, Marco and Koen about glaciers dynamics and the colourful flora of Svalbard. Another plated dinner in our favourite restaurant and then a couple of Minke whales feeding at the starboard side of the ship. Another great day of our voyage with unforgettable views and memories to bring home with us.



Day 6 – Tuesday 1st July. Hamburgbukta and Gullybukta

12:00 GPS Position: 79° 31.9' N / 010° 36.9' E

Wind: NE-3 • Sea: Rippled • Weather: Overcast • T_{air}: 8°C • T_{sea}: 4°C

This morning, we arrived at Hamburgbukta, a stunning sheltered bay tucked into the rugged Arctic coastline. Hamburgbukta is located on the western coast of Spitsbergen, the largest island in the Svalbard archipelago. Nestled between the capes of Kapp Altmann and Kapp Toscana, Hamburgbukta is known for its rugged Arctic beauty and dramatic landscapes, including steep mountains, glaciers, and a coastline shaped by centuries of ice activity.

The bay has historical significance due to early whaling and trapping activities, and it is now part of the Sør-Spitsbergen National Park, making it a protected area rich in wildlife such as harbour seals and seabirds. Although there was a bit of swell outside the bay, inside the water was calm and inviting, perfect conditions for our activities.

We started the day with a beach clean-up, doing our part to help preserve this remote environment. It's always sobering to see marine debris even in such wild, seemingly untouched places, but rewarding to know we're leaving it better than we found it. Meanwhile, the kayakers took to the water, paddling along the sheltered bay under towering cliffs and Arctic silence.



© Matt Cheok

In the afternoon, we explored Magdalenefjorden by Zodiac, a highlight for many. Magdalenefjorden is often considered one of the most breathtaking and iconic fjords in Svalbard, located on the northwest coast of Spitsbergen. Surrounded by steep, jagged mountain peaks and dramatic glacier tongues that descend directly into the sea, the fjord offers a stunning panorama that captures the raw beauty of the Arctic.

Its calm, deep waters reflect the towering cliffs and floating ice, creating a serene yet majestic landscape. Magdalenefjorden is also rich in history—once a key area for 17th-century whalers, remnants of old whaling stations and graves still remain on its shores, particularly at Gravneset.

Cruising along the glacier-carved coastline, we

approached Gullybreen, its icy face reflecting in the glassy water. Along the way, we spotted harbour seals resting on ice, a busy colony of little auks fluttering overhead, and a group of majestic walrus hauled out on the beach.

We wrapped up the day with a classic Arctic tradition: the BBQ on deck, surrounded by glaciers and mountain peaks. With good food, music, and plenty of laughter, the evening turned into a celebration, with dancing under the midnight sun and the glaciers as our backdrop.

Another unforgettable day in the Arctic.





Day 7 – Wednesday 2nd July. Ymerbukta and Colesbukta

12:00 GPS Position: 78° 17.8' N / 013° 56.5' E

Wind: E-6 • Sea: Rippled • Weather: Overcast • air: 8°C • sea: 4°C

During the morning of our last day of expedition *M/V Ortelius* continued travelling south towards the mouth of Isfjorden, the main fjord of Svalbard which cuts the island of Spitsbergen in half and stretches East to West for more than 80km.

The sky was blanketed with thick high clouds and the wind was howling 30-35 knots. We were in the middle of a small cyclonic system which had left the North Atlantic earlier at the beginning of the week and now was determined to move northeast towards the Barents sea.



Due to difficult weather conditions, Expedition Leader Adam decided to go with Plan B. Not a bad choice after all, as we ended up moving to the adjacent fjord, Ymerbukta, and enjoyed a beautiful hike along the perimeter toward the eastern front of Esmarkbreen—an outlet surging glacier with a 3 km-wide and over 30 m-high front. Some of us approached the glacier front to

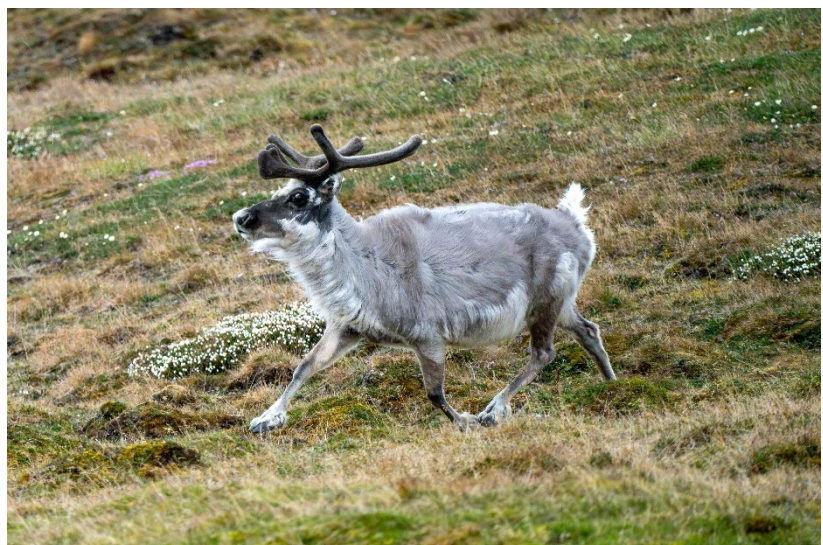


take in the silence, while others ventured up the scree-sloped, morainic terrain, where Svalbard poppies, purple saxifrage, and whitlow grass were in full bloom.



After a few hours, we returned to the ship and crossed Isfjorden to the south, where *MV Ortelius* positioned herself in the middle of Colesbukta. This sheltered bay, located on the southern shore of Isfjorden, was once the site of a Soviet-era coal mining settlement. Though now abandoned, remnants of the past—rusting infrastructure, derelict buildings, and weathered piers—still dot the shoreline, offering a haunting contrast to the raw beauty of the surrounding landscape. There was a chance for another stroll outside in the tundra, gaining a couple of hundred meters of elevation to enjoy the sweeping views across the bay, or slowly moving towards some nice grazing Svalbard reindeer and observed them grazing, resting or running.

Eventually, the time to wrap up our memories arrived. At 18:30, we all gathered in the bar to toast a wonderful voyage together with Captain Remmert, Adam, and the rest of the staff. A lasting memory to take home was Gabi's video, which brilliantly and emotionally captured the essence of the journey. It was a voyage of discovery and learning about the Arctic environment and the wilderness of this remote Norwegian archipelago. But most importantly, it was a vacation during which we formed bonds and friendships—with the incredible staff, the dedicated crew, and among ourselves.



Day 8 – Thursday 03rd July. Longyearbyen, Bykaia

08:00 GPS Position: 78° 13.7' N / 015° 36.2' E

Wind: SE-3 • Sea: Smooth • Weather: Overcast • T_{air}: 7°C • T_{sea}: 4°C

After a restless night with the ship swinging at anchor in Colesbukta, *MV Ortelius* made her slow approach into Adventfjorden in the early morning hours, gliding gently toward the calm waters of Longyearbyen's port.

Our final breakfast on board offered both comfort and a quiet sense of closure. We lingered over warm mugs and easy conversation, reluctant to let go of the shared rhythm of life at sea. Then came the familiar call to gather our belongings, walk the well-worn path to the gangway, and say our goodbyes to the crew and staff, who had safely guided us through ice and awe, and to the fellow travellers who, over time, had become something more.

As we stepped onto Bykaia, the main pier of Longyearbyen, a quiet shift settled over us. Some turned toward the town's empty streets, eager to soak in one last adventure before departure. Others, already thinking of home, carried with them the memories of glaciers, sea ice and wildlife of this remote and pristine archipelago of the far North. Most likely the polar bug will bring us back together for another chance of fun and exploration in the near future.

On behalf of Oceanwide Expeditions, Captain Remmert Koster, Expedition Leader Adam Burke, Hotel Manager William Barnes and all the crew and staff of *M/V Ortelius*, it has been a pleasure and a privilege travelling with you.

Total distance sailed on our voyage: 865 nautical miles.

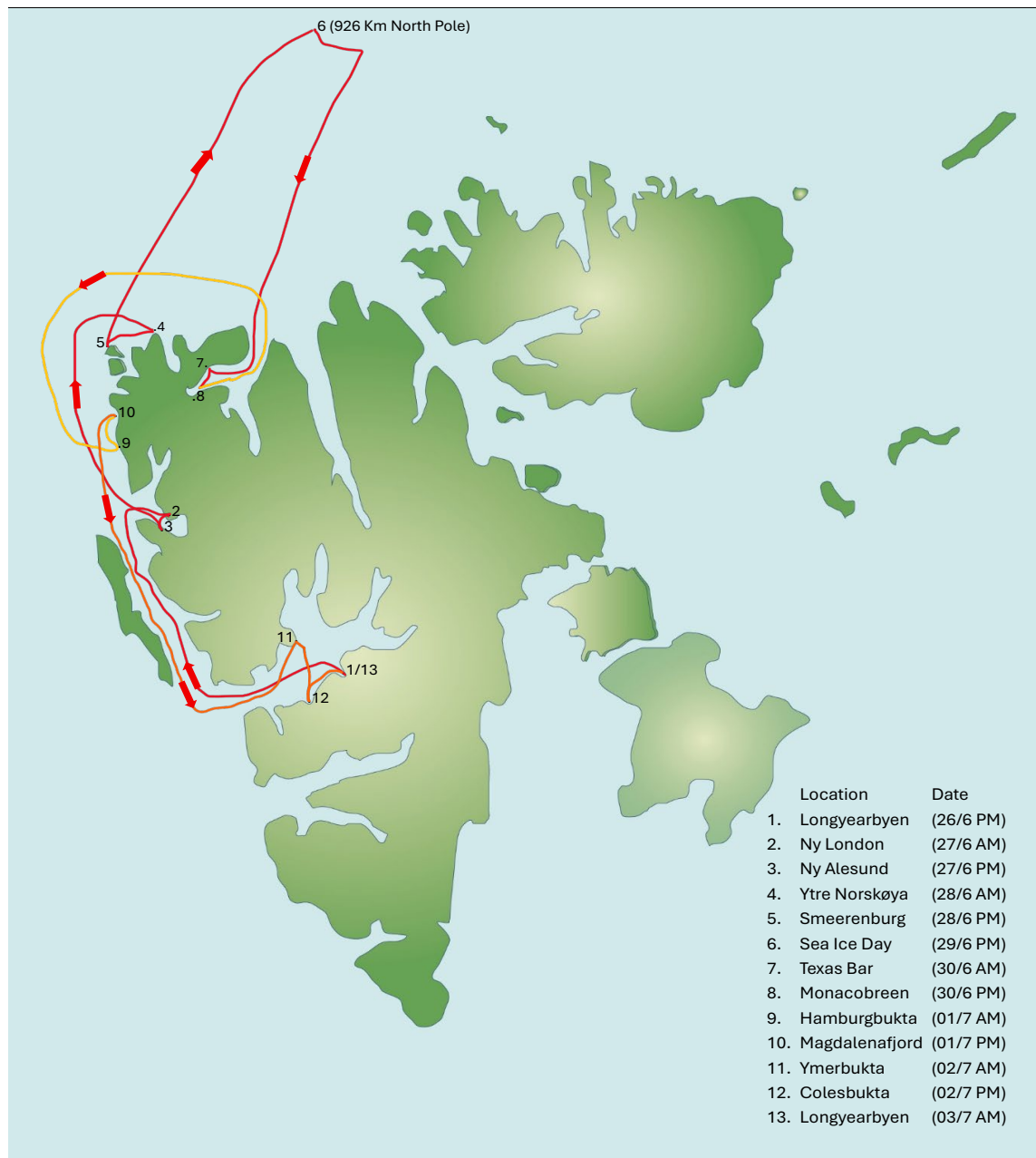
Northernmost position: 81° 39.5' N / 021° 20.4'E

Your Oceanwide Expeditions Team





MV “Ortelius” (OCEANWIDE) From 26-June to 03-July 2025.



Passengers:	108 in 50 cabins.
Staff & Crew:	Crew 44 Guides 8 Doctor 1 3 Pilots
Length	90.95 Meters
Breadth	17.20 Meters
Draft	5. 6 Meters
Ice Class	UL1 (Equivalent to 1A) PC 6*
Displacement	4090 Tonnes
Propulsion	6 ZL 40/48 SULZER
Speed	10.5 knots average cruising speed
Flight Deck Helicopter (2)	12 Zodiac Boat Mk 5. 60 HP
PC6: Suitable for navigation in medium first-year ice, which may include old ice inclusions.	Ice Thickness: 70 to 120 cm (2.3 to 3.9 ft) by WMO. Call Sign: PCGQ



Birds and Mammals of Svalbard and Franz Josph Land

English Name	Latin	German	26-Jun	27-Jun	28-Jun	29-Jun	30-Jun	1-Jul	2-Jul
Great Northern Diver	<i>Gavia immer</i>	Eistaucher							
Red-throated diver	<i>Gavia stellata</i>	Sterntaucher							
Northern Fulmar	<i>Fulmarus glacialis</i>	Eissturmvogel	x	x	x	x	x	x	x
Northern Gannet	<i>Morus bassanus</i>	Basstölpel							
Whooper Swan	<i>Cygnus cygnus</i>	Singschwan							
Bean Goose	<i>Anser fabalis</i>	Saatgans							
Pink-footed Goose	<i>Anser brachyrhynchus</i>	Kurzschnabelgans					x		
Barnacle Goose	<i>Branta leucopsis</i>	Weisswangengans		x	x		x	x	x
White-fronted Goose	<i>Anser albifrons</i>	Blässgans							
Greylag Goose	<i>Anser anser</i>	Graugans							
Brent Goose	<i>Branta bernicla</i>	Ringelgans							
Snow Goose	<i>Chen caerulescens</i>	Schneegans							
Eurasian Wigeon	<i>Anas penelope</i>	Pfeifente							
Eurasian Teal	<i>Anas crecca</i>	Krickente							
Mallard	<i>Anas platyrhynchos</i>	Stockente							
Northern Pintail	<i>Anas acuta</i>	Spießente							
Tufted Duck	<i>Aythya fuligula</i>	Reiherente							
Common Eider	<i>Somateria mollissima</i>	Eiderente	x	x	x		x	x	x
King Eider	<i>Somateria spectabilis</i>	Prachteiderente					x		
Steller's Eider	<i>Polysticta stelleri</i>	Scheckente							
Long-tailed Duck	<i>Clangula hyemalis</i>	Eisente		x			x		
Black Scoter	<i>Melanitta nigra</i>	Trauerente							
Common Goldeneye	<i>Bucephala clangula</i>	Schellente							
Rock Ptarmigan	<i>Lagopus mutus hyperboreus</i>	Alpenschneehuhn					x		
Eurasian Oystercatcher	<i>Haematopus ostralegus</i>	Austernfischer							
Ringed Plover	<i>Charadrius hiaticula</i>	Sandregenpfeifer							x
European Golden Plover	<i>Pluvialis apricaria</i>	Goldregenpfeifer							
Sanderling	<i>Calidris alba</i>	Sanderling							
Pectoral Sandpiper	<i>Calidris melanotos</i>	Graubruststrandläufer							
Purple Sandpiper	<i>Calidris maritima</i>	Meerstrandläufer							x
Red Knot	<i>Calidris canutus</i>	Knutt							
Dunlin	<i>Calidris alpina</i>	Alpenstrandläufer							
Whimbrel	<i>Numenius phaeopus</i>	Regenbrachvogel							
Common Redshank	<i>Tringa totanus</i>	Rotschenkel							
Ruddy Turnstone	<i>Arenaria interpres</i>	Steinwälzer		x					
Grey Phalarope	<i>Phalaropus fulicarius</i>	Thorshühnchen							
Red-necked Phalarope	<i>Phalaropus lobatus</i>	Odinshühnchen							
Pomarine Skua	<i>Stercorarius pomarinus</i>	Spatelraubmöwe							
Arctic Skua	<i>Stercorarius parasiticus</i>	Schmarotzerraub-möwe					x	x	x
Long-tailed Skua	<i>Stercorarius longicaudus</i>	Falkenraubmöwe							
Great Skua	<i>Stercorarius skua</i>	Skua					x		
Sabine's Gull	<i>Xema sabini</i>	Schwalbenmöwe							
Black-headed Gull	<i>Larus ridibundus</i>	Lachmöwe							
Common/Mew Gull	<i>Larus canus</i>	Sturmmöwe							
Glaucous Gull	<i>Larus hyperboreus</i>	Eismöwe		x	x		x	x	x
Iceland gull	<i>Larus glaucoides</i>	Polarmöwe							
Herring Gull	<i>Larus argentatus</i>	Silbermöwe							
Lesser black-backed Gull	<i>Larus fuscus</i>	Heringsmöwe							
Great black-backed Gull	<i>Larus marinus</i>	Mantelmöwe							
Kittiwake	<i>Rissa tridactyla</i>	Dreizehenmöwe		x	x	x	x	x	x
Ross' Gull	<i>Rhodostethia rosea</i>	Rosenmöwe							
Ivory Gull	<i>Pagophila eburnea</i>	Elfenbeinmöwe		x		x			
Arctic Tern	<i>Sterna paradisaea</i>	Küstenseeschwalbe		x	x		x	x	x
Common Guillemot	<i>Uria aalge</i>	Trottellumme							
Brunnich's Guillemot	<i>Uria lomvia</i>	Dickschnabellumme	x	x	x	x	x	x	x
Black Guillemot	<i>Cepphus grylle</i>	Gryllteiste	x	x	x	x	x	x	x
Little Auk	<i>Alle alle</i>	Krabbentaucher		x	x	x	x	x	x
Puffin	<i>Fratercula arctica</i>	Papageitaucher	x	x	x		x	x	x
Barn Swallow	<i>Hirundo rustica</i>	Rauchschwalbe							
White Wagtail	<i>Motacilla alba</i>	Bachstelze							
Meadow Pipit	<i>Anthus pratensis</i>	Wiesenpieper							
Wheatear	<i>Oenanthe oenanthe</i>	Steinschmätzer							
Blackbird	<i>Turdus merula</i>	Amsel							
Snow Bunting	<i>Plectrophenax nivalis</i>	Schneeammer		x	x		x	x	x
Redpoll	<i>Carduelis flammea</i>	Birkenzeisig							
Lapland longspur	<i>Calcarius lapponicus</i>	Spornammer							
Fieldfare	<i>Turdus pilaris</i>	Wacholderdrossel							
Redwing	<i>Turdus iliacus</i>	Rotdrossel							
Brambling	<i>Fringilla montifringilla</i>	Bergfink							
Gyrfalcon	<i>Falco rusticolus</i>	Gerfalke							

MAMMALS

English	Latin	German							
Walrus	<i>Odobenus rosmarus</i>	Walross			X			X	
Bearded seal	<i>Erignathus barbatus</i>	Bartrobbe				X	X		
Ringed seal	<i>Phoca hispida</i>	Ringelrobbe				X			
Harp seal	<i>Pagophilus groenlandicus</i>	Sattelrobbe							
Hooded seal	<i>Cystophora cristata</i>	Klappmütze							
Common /Harbour seal	<i>Phoca vitulina</i>	Seehund		X	X			X	
Minke Whale	<i>Balaenoptera acutorostrata</i>	Zwergwal	X				X		
Sei Whale	<i>Balaenoptera borealis</i>	Seiwal							
Blue Whale	<i>Balaenoptera musculus</i>	Blauwal	X						
Fin Whale	<i>Balaenoptera physalus</i>	Finnwal							
Humpback Whale	<i>Megaptera novaeangliae</i>	Buckelwal							
Bowhead whale	<i>Balaena mysticetus</i>	Grönlandwal							
Sperm Whale	<i>Physeter macrocephalus</i>	Pottwal							
Narwhal	<i>Monodon monoceros</i>	Narwal							
Northern Bottlenose Whale	<i>Hyperoodon ampullatus</i>	Entenwal (Dögling)							
Orca (Killer Whale)	<i>Orcinus orca</i>	Schwertwal (Orca)							
White-beaked Dolphin	<i>Lagenorhynchus albirostris</i>	Weisschnauzendelphin							
Beluga	<i>Dephinapterus leucas</i>	Weisswal							
Polar Bear	<i>Ursus maritimus</i>	Eisbär			X				
Arctic Fox	<i>Alopex lagopus</i>	Polarfuchs		X	X			X	X
Spitsbergen Reindeer	<i>Rangifer tarandus platyrhynchus</i>	Svalbard Rentier	X	X			X	X	X
Sibling vole	<i>Microtus rossiaemeridionalis</i>	Südfeldmaus							
Short tailed Vole	<i>Microtus agrestis</i>	Erdmaus							

Adam Burke – Expedition Leader



Adam has always had a love of the outdoors and adventure, from an early age he dreamt of visiting exotic places and immersing himself in other cultures.

This love of the outdoors led him to work teaching adventurous activities and for over fifteen years this pursuit has given him the opportunity to live and work all over the globe. He has taught sailing in Australia, paddle sports on Europe's rivers and led expeditions in Africa.

After spending five years teaching white water safety & rescue and boat handling techniques to the fire brigade, he moved

on to providing marine science support in Antarctica. He has spent over five years living between the Antarctic continent and the island of South Georgia, including overwintering twice.

Whilst providing science support he spent his time in Antarctica managing boating operations and helming RIBs for diving operations. This covered understanding environmental changes and its effects, wildlife monitoring and counting as well as water sampling for a long-term data collection.

Adam enjoys travelling with his partner who shares the same values and love of the outdoors. This has taken them from deserts to rain forests and ultramarathons in the mountains.

Allan White – Asst. Exp. Leader



Allan was born and raised in the Falkland Islands. He's a fifth generation Islander, and a descendant of one of the original British colonists in 1840. His higher education was completed in England, after which he embarked on a military career.

He joined the British Army aged 17. After serving in West Germany for two years during the Cold War period, he completed deployments in Northern Ireland, Cyprus as a United Nations peacekeeper, and with British Forces South Atlantic Islands. He left the Army to settle back in the Falklands.

While working as a Port Agent in the Falklands, Allan worked with the late Lars-Eric Lindblad, the inspirational pioneer of small ship expedition cruising. He encouraged Allan to become a Zodiac driver and go to sea for a year. Thirty years later, he's still at it. His voyages have taken him all over the world, with particular focus on the Polar regions. His travel experience ranges from 90° North to 78° South.

In the Falklands, Allan and his wife owned and operated their own tourist lodge for over a decade. More recently they managed a privately owned island, where they were the sole residents for almost 5 years, with thousands of albatrosses, penguins and seals for neighbours.

Allan is an experienced guide and Zodiac driver, with a keen interest in natural history and polar exploration. He lives in the Falklands capital Stanley, with his wife Jacqui.

Marco Rosso – Expedition Guide



Marco was born in the region of Prosecco & Tiramisù in Northern Italy. He graduated in Mechanical Engineering at the University of Padua, his native city, and subsequently achieved a master's degree in "Turbomachinery and Fluid Dynamics" at the Von Karman Institute in Brussels, Belgium.

Currently he is studying Earth Science at Stockholm University, Sweden.

After a few years working in the automotive industry, he decided to embark himself on a new quest. For two

years he backpacked from the tropical forests of Central America, through the snowy peaks of the Andean Cordillera, rolling all the way down to the tip of South America.

The raw and powerful beauty of Patagonia convinced him to swap Mother Nature wonders for mankind artifacts. Fascinated by applied geophysics, he therefore decided to use his deep and broad knowledge in thermodynamics and fluid mechanics to satisfying his innate curiosity, thereby started to study Earth Science.

During the last decade he has been living in Puerto Natale, Chile; leading groups as a trekking guide and tour leader in some of the most beautiful and rugged trails of Patagonia and since a couple of years has started to join expeditions to the Arctic and the Antarctic on board of Oceanwide vessels.

Marcelo Tarapow – Expedition Guide



Marcelo Tarapow has a Master's degree in Social Sciences, specialized in History from the National University of Quilmes, retired Rear Admiral of the Argentine Navy, Honorary Professor at the Nikola Vaptsarov Academy (Bulgaria) and Graduate in Naval Systems.

He participated in twelve expeditions to Antarctica between 1988 and 2017, occupying different roles until being the leader on his last two occasions, spending around 900 days in Antarctic activity.

He has also carried out studies in Environmental Preservation, Climate Change, Energy Efficiency and Tourism.

He has been a professor in pre-Antarctic courses taught in Argentina, Colombia and Bulgaria, especially on navigation, meteorology, the Antarctic Treaty and the Madrid Protocol.

He is the President of the Academy of Antarctica, a lecturer and researcher especially on topics related to the White Continent, having presented on historical Antarctic expeditions in Argentina, Belgium, Bulgaria, Colombia, France and Romania.

He is a member of the Council at Polar Educators International for the 2024-2025 biennium.

His main hobbies are swimming, cycling, tango, reading, an enthusiastic collector of ancient objects linked to Antarctic history and an amateur photographer.

Always ready to learn from other cultures, listen to stories, passionately share their experiences and care for the environment.

Gabi Kolodko – Expedition Guide



Having been exposed to the pristine wilderness of Alaska, Canada, and Lapland before turning ten, Gabi developed a deep-rooted passion for cold climates and the great outdoors. Each summer, she devoted herself to sailing, and in 2012, her adventures included crossing the Baltic Sea from Poland to Scandinavia and back aboard the Zawisza Czarny, a historic 42-meter vessel originally built in 1952.

With a Master's in Fine Arts and a fascination for art, culture, and history, Gabi's curiosity led her to explore the unique human-animal relationships in polar regions, combining her interest in zooanthropology with the stories of Antarctica's early exploration and modern conservation. Her first journey to Antarctica in 2019 only deepened her connection to the continent's striking landscapes and rich history.

Gabi's enthusiasm for the cold extends beyond her travels; she actively practices the Wim Hof method and regularly takes on ice baths, walrusing, and cryotherapy throughout the year. A memorable encounter with a herd of Musk Oxen in 1993 at Herschel Island off the Canadian Arctic coast sparked her love for Arctic wildlife, with the Gentoo Penguin now topping her list of favorites in Antarctica.

She loves being part of life-changing voyages, rediscovering the polar regions with each new group of guests. Driven by a passion for adventure and a genuine desire to share the wonders of the poles, Gabi aims to inspire awe and respect for these breathtaking and fragile landscapes, offering others a transformative glimpse into the natural world.

Martin Anstee – Expedition Guide



Martin has been a keen naturalist and wildlife photographer for most of his life.

Martin has been an active Bird Ringer since the year 2000 and particularly enjoys studying/ringing and just being around seabird colonies.

Martin has used a camera since an early age and has combined his love of the outdoors and seabird habitats with photography. Martin has spent time in Zimbabwe and Botswana photographing other wildlife.

Martin has combined this with a career in the Police Service, firstly in the UK where he was, amongst other roles, a wildlife crime officer. His last role in The Police was as a Police Sergeant in The Royal Falkland Islands Police.

Martin lived in the Falkland Islands, Stanley, for just over two years, leaving to return to the UK in November 2021. In his two years Martin was a volunteer with Falklands Conservation, he helped with The Falkland Islands Seabird Monitoring Program (FISMP) in particular counting Seabirds and ringing Black browed Albatross. Martin was also involved in fieldwork for a Striated Caracara (Johnny Rook) study. As a result Martin has visited most of the larger (and some of the smaller) outlying islands that form part of The Falkland Islands.

This is also where Martin started his career as a guide, he enjoys sharing his knowledge of the Islands and the wildlife which he continues to do to this day. Martin has also guided in The Arctic, Antarctica and some of the sub-antarctic Islands as well as some of the least visited Islands in The Atlantic such as Tristan da Cunha.

Matt Cheok – Expedition Guide



Matt is an adventure photographer and videographer from Sydney, Australia.

His work has taken him to some of the planet's most remote and captivating destinations – from the polar regions of Antarctica, Svalbard and Greenland to the majestic African savannah, landlocked steppe countries of Central Asia, and rugged mountains of South America.

In Antarctica, Matt's favourite subjects to capture are the playful gentoo penguins and the dramatic polar landscapes in the late afternoon light.

As a photography educator, Matt enjoys sharing his expertise with fellow travellers and inspiring them to connect with the natural world.

Matt's career path has been full of surprises. He previously worked as a commercial and insurance lawyer in Sydney, but he's now much happier pursuing his passion for photography and adventure.

When he's not guiding, Matt spends much of his time camping, thru-hiking, drinking lots of Bialetti coffee, and exploring the outdoors, having recently returned from the Fann Mountains in Tajikistan.

Onboard, you'll find Matt out on deck, cameras in hand. Don't hesitate to approach him with any photography questions or just for a friendly chat!

Aitana Forcén-Vázquez – Exp. Guide



Aitana is a passionate oceanographer and adventurer, bringing a wealth of knowledge and experience to her role as a polar guide. Originally from Spain, she spent 12 years in New Zealand, where she earned her PhD in Physical Oceanography—focusing on unravelling the mysteries of how the ocean moves.

Her expertise extends to large-scale currents, waves, ice and water mass formation, and climate, with an unwavering enthusiasm for discussing these topics. Aitana's conversations can seamlessly transition from the intricacies of oceanography to her love

for endurance sports and the art of knitting. With a strong background in ocean-going fieldwork, Aitana served as the Principal Investigator for the Ross Sea Outflow Experiment, a groundbreaking initiative examining the export of cold water from the Ross Sea. She made history as one of the most junior-ever physical scientists to assume the role of voyage leader on the R V Tangaroa, New Zealand's esteemed research vessel, during an oceanographic voyage to the Southern Ocean.

Aitana's career has been as diverse as the marine environments she has explored. From driving a weather boat for two editions of the America's Cup as a meteorological technician to transitioning into the private sector, where she provided vital marine forecasts for port operations and Defence exercises. In these roles she has been a key player in ensuring the safety and efficiency of maritime operations. When adventure allows it, Aitana shares her knowledge with university students as an associate lecturer, fostering the next generation of marine scientists.

In her free time, Aitana is an avid open water swimmer, a dedicated communicator and content creator, and a seeker of unconventional road trips off the beaten path.

Xinpeng Rao - Expedition Guide



Rao was born in Harbin China, the city full of snow and ice. This is still the reason he gives to others that he is really afraid of hot, he is a true northern man.

His hometown made him full of love in ice and ocean. After he retired from CAPF army and finished college in 2011, he works as an international tour leader in Travel agency for 6 years, during that time, he first went to Europe for western history, then Africa for wildlife.

After his first time in Antarctica, he actually found that most of the information written in Chinese such as Baidu in some common sense about Polar region were totally wrong. Then he decided to make some change.

Now 5 years since that first tour leader trip, during this time he tried to learn anything he could. He has some friends also working in polar region as a staff or a translator. They together making Science popularization in China.

Rao always encourage people to learn from the place they have been. Now the world changing so fast, every modern city looks like same. Original culture and wild environment were taken place by “modern”. That is also the reason why now the wildlife tour is more and more popular in tourism industry.

中文

饶出生在哈尔滨这座充满冰天雪地的城市，这也是他非常怕热的理由——因为他是北方人。

家乡让他从小就爱上了冰雪和海洋。2011 年，他从武警部队退役，并在大学毕业后，在旅行社担任了 6 年的国际领队，在旅行的过程中，他先是去欧洲学习西方历史，然后去了非洲学习野生动物。

在他第一次去南极后，他发现实际上大多数国内书写的知识，比如百度百科，在关于极地的许多常识信息都是完全错误的。从此他决定做些改变。

现在距离他第一次领队旅行已经 5 年了，在这段时间里，他试图在船上学习任何他能学到的东西。他有一些朋友也在极地地区作为探险队或翻译。他们一同试图在国内进行科普教育。

他总是鼓励人们在旅途中学习。现在的世界变化之快，每个现代城市看起来都是一样的。民俗文化和野生环境被“现代社会”所取代。这也是为什么现在野生环境为目的地的旅游在旅游业中越来越受欢迎的原因。

Koen Jongerling - Expedition Guide



Having grown up in the Netherlands Koen always knew he wanted to live in a more rugged landscape than the rather flat lowlands that surrounded him. That is why after finishing his outdoor education in 2011, he chose to move to Patagonia, Chile to find the mountains he was longing for.

Combining his love for nature and the desire to learn more, he started guiding expeditions through the mountain ranges of Patagonia. Travelling back and forth to Europe for additional mountain courses - every time feeling more at home in the rough conditions of Patagonia. In 2017 he started his own guide company, introducing travelers to the beauty of Southern Chile.

Living in Puerto Natales he came to love the cold and extreme weather and after years of working in one of the most southern mountain ranges in the world, he could not stop looking further south to the great white continent, Antarctica.

Kelly Pearson



Kelly grew up in the South East of England, home of the Norfolk Broads. After completing her BA Hons Degree in Contemporary Fine Art in Newcastle she worked as an Artist Assistant for Sir Antony Gormley for several years. One day walking along Tyne green she discovered the local kayak club and from there her journey to paddle across the world began.

Kelly is kayak coach and instructor based in North Wales in the UK. Her source to sea adventures began almost 10 years ago when she discovered her passion for whitewater kayaking which naturally led her to the sea. Whilst travelling she spent time exploring the waters of the Gulf Islands, the remote rivers on Vancouver Island, expedition kayaking and raft guiding across British Columbia. She later spent time working and playing as a kayak instructor on the South Island of New Zealand. After several years travelling overseas, kayaking on multi day expeditions in Canada, USA and New Zealand, she relocated to North Wales to pursue her ambition to share her passion with others as a kayak coach. When not guiding she loves to spend time paddling in tide races off the Anglesey Coast and exploring the abundant wildlife, kayaking the local whitewater rivers and running in the Eryri mountains. Over the last year Kelly has spent two seasons working in the polar regions as a sea kayak guide. Exploring the coastlines of Svalbard in the Arctic and the giant tabular icebergs of the Antarctic peninsula she has begun a new adventure through the means of a kayak. Having recently gained her White Water Moderate Coach Award she is excited to continue the journey of sharing her passion and engaging more people with the world of paddlesport.

Kenneth Lo – Ships Doctor



Dr Kenneth Lo is an Emergency Medicine Specialist currently based in Christchurch, New Zealand.

He will be joining you on this trip to the Arctic with Oceanwide Expeditions, and he feels very privileged to be able to share this extraordinary experience with you.

Ken was born in Hong Kong and grew up in England. After completing his medical training in London, a love for travel and the outdoors led him on expeditions to Africa, Costa Rica and India, eventually ending up in Australia

and New Zealand.

Aside from his interest in expedition medicine, he has a passion for Humanitarian medicine and served missions with Doctors Without Borders in South Sudan and Iraq.

It was in Iraq where he met his French wife, Melanie with whom he currently lives with their two young sons in New Zealand. He speaks English, Cantonese and terrible French.

When not working, he loves cooking, woodworking and spending time with his family.



North Spitsbergen Basecamp - Kayaking, Hiking, Photo Workshop, Cleaning the Shores

Date: 26th June 2025

Day 1: Embarkation – Longyearbyen

WELCOME ABOARD!

Please make yourselves at home in your cabins and check that you have received all your luggage. **If you are missing any luggage or find bags in your cabin which are not yours, please visit reception on Deck 4.** Please be patient as hotel staff may be busy with embarking guests – thank you 😊

Tea/coffee is available in the **Bar located on Deck 6.**

PLEASE LISTEN FOR ANNOUNCEMENTS.

1700 +/- Ship safety briefing in the **Bar on DECK 6.** Attendance is **MANDATORY.**

After the briefing the emergency alarm will be sounded. You must go back to your cabin to get your life jacket and dress warmly. All guests must then go to the **MUSTER STATION** which is the **Bar on Deck 6.** Please ensure you have your own room key with you as you will need this to check in, and it will also indicate which lifeboat you are assigned to.

1800 +/- Please join the Expedition Team and Hotel Manager in the **Bar on Deck 6** for a welcome briefing to orientate you to life on board and explain the plan for the forthcoming days.

1900 - 2000 Dinner in the **Restaurant on Deck 4.**

2030 +/- You will be called deck by deck to go to the **Lecture Room on Deck 3** to collect your Muck Boots: please bring your thick socks.

Please note that we will be sailing into open seas. If you are concerned about sea sickness, the doctor will be available if you require medication, which should be taken as soon as possible after embarkation. Please ensure that all your belongings are stored away safely and that doors and drawers in your cabin are tightly closed.



North Spitsbergen Basecamp - Kayaking, Hiking, Photo Workshop, Cleaning the Shores

Date: 27th June 2025

Day 2: Ny-London and Ny-Alesund

- 0645 Wake-up call: Good Morning!
- 0700-0800 Buffet breakfast will be served in the **Dining Room on Deck 4.**
- 0815 +/- Please join the Expedition Team in the **Bar on Deck 6** for the **MANDATORY AECO, Zodiac/Polar Bear Safety briefing.**
Attendance will be checked.
For those wishing to Kayak there will be a **MANDATORY Kayak briefing** and sign up.
- 1045 +/- We hope to start disembarkation for a **Zodiac cruise at NY-London;**
Please dress warmly; it is mandatory to wear waterproofs.
- 1230-1330 Lunch in the **Restaurant on Deck 4.**
- 1330 We hope to start disembarkation for **going ashore at Ny-Alesund.**
Please dress warmly; it is mandatory to wear waterproofs.
- 1830 Please join the Expedition Team in the **Bar on Deck 6** for our daily recap, including plans for tomorrow
- 1900 Dinner in the **Restaurant on Deck 4.**
Please attend promptly: service only starts once everyone is seated

If conditions are good, we encourage you to make the most of the evening light by being on the outside decks or on the bridge; enjoy the landscape and look out for wildlife!



North Spitsbergen Basecamp - Kayaking, Hiking, Photo Workshop, Cleaning the Shores

Date: 28th June 2025

Day 2: Ytre Norskoya and Smeerenburg

- 0715 Wake-up call: Good Morning!
- 0730-0830 Breakfast will be served in the **Dining Room on Deck 4**.
- 0900 +/- Disembarkation for a **landing at Ytre Norskoya**.
Join us for a short hike to a viewpoint with stunning views over the Arctic Ocean with no more land between you and the north pole.
Please dress warmly; it is mandatory to wear waterproofs.
- 1230-1330 Lunch is served in the **Restaurant on Deck 4**.
- 1400 Disembarkation for **split landing/Zodiac cruise at Smeerenburg**.
Smeerenburg is the site of a Dutch whaling station from the 1600s, the remnants of the old whaling cemetery can also be seen, a stark reminder of the hardships endured working in the Arctic. Now the wildlife has returned, and birdlife thrives here as well as seals and walrus.
Please dress warmly; it is mandatory to wear waterproofs.
- 1830 Please join the Expedition Team in the **Bar on Deck 6** for our daily recap, including plans for tomorrow.
- 1900 Dinner will be served in the **Restaurant on Deck 4**.

We are in the land of the midnight sun, and we encourage you to spend time out on deck or up on the bridge enjoying the late evening light. There is always the possibility of spotting wildlife, and the landscape can be amazing!



North Spitsbergen Basecamp - Kayaking, Hiking, Photo Workshop, Cleaning the Shores

Date: 29th June 2025

Day 4 – Into the pack ice

We will be spending the day in this wonderful and unique landscape, exploring the Arctic pack ice and looking for wildlife.

We hope to find birds, seals, whales and, of course, polar bear.

We encourage you to spend as much time as possible on the outside decks and on the bridge to help us search: the more eyes looking for animals, the better chance we have to spot them!

PLEASE REMEMBER TO BE QUIET ON THE OUTSIDE DECKS:
NOISES/SOUNDS CAN SCARE AWAY WILDLIFE!

- 0745 Wakeup-call: Good Morning!
- 0800-0900 Buffet breakfast will be served in the **Dining Room on Deck 4.**
- 1100 +/- **Marco** will give a lecture about **Sea Ice Formation and Dynamics.**
Please join her in the **Bar on Deck 6**
- 1230-1330 Lunch will be served in the Dining Room on Deck 4.
- 1530 +/- **Martin** will give a presentation about **Birds of Svalbard.**
Please join him in the **Bar on Deck 6**
- 1815 Please join the Expedition Team in the **Bar on Deck 6** for our daily recap.
- 1900 Dinner is served in the **Restaurant on Deck 4.**

*If conditions are good, we encourage you to make the most of the evening light by being on the outside decks or on the bridge.
Enjoy the landscape and look out for wildlife!*



North Spitsbergen Basecamp - Kayaking, Hiking, Photo Workshop, Cleaning the Shores

Date: 30th June 2025

Day 4 – Texas Bar & Monacobreen

- 0715 Wakeup-call: Good Morning!
- 0730-0830 Breakfast will be served in the **Dining Room on Deck 4.**
- 0845 +/- We hope to start disembarkation for **going ashore at Texas Bar.**
This site is named after a trapper's hut which you will see ashore and is a fantastic place for hiking, along with a variety of flora and fauna.
Please dress warmly; it is mandatory to wear waterproofs.
- 1200 POLAR PLUNGE!!! *We will provide you with towels, please don't take towels from the cabins.*
- 1300-1400 Lunch is served in the Dining Room on Deck 4.
- 1430 Disembarkation for a **Zodiac Cruise of Monacobreen**, one of the most iconic glacier fronts in Svalbard. This is named after Prince Albert I of Monaco, for his 1898-1907 oceanographic expedition to map the area. If we are lucky, we may spot wildlife such as bearded seal, ivory gull and beluga. **Please dress warmly; it is mandatory to wear waterproofs.**
- 1815 Please join the Expedition Team in the **Bar on Deck 6** for our daily recap.
- 1900 Dinner is served in the **Restaurant on Deck 4.**



North Spitsbergen Basecamp - Kayaking, Hiking, Photo Workshop, Cleaning the Shores

Date: 1st July 2025

Day 6 – Hamburgbukta & Magdalenafjord

- 0715 Wakeup-call: Good Morning!
- 0730-0830 Breakfast is served in the **Dining Room on Deck 4.**
- 0845 Disembarkation for a **landing at Hamburgbukta**. This site is a fantastic place for hiking, along with a variety of flora and fauna. **Please dress warmly; it is mandatory to wear waterproofs.**
- 1230-1330 Lunch is served in the **Dining Room on Deck 4.**
- 1430 Disembarkation for a **Zodiac cruise in Magdalenafjord**. We hope to spot a variety of wildlife and enjoy the scenic beauty of the fjord. **Please dress warmly; it is mandatory to wear waterproofs.**
- 1815 Please join the Expedition Team in the **Bar on Deck 6** for the daily recap, including plans for tomorrow.
- 1900 BBQ dinner is served on the **Helicopter Deck on Deck 6 aft.** **Please dress warmly.**



North Spitsbergen Basecamp - Kayaking, Hiking, Photo Workshop, Cleaning the Shores

Date: 2nd July 2025

Day 7: Alkhornet and Colesbukta.

07:15 Wake-up call: Good morning!

07:30-08:30 Breakfast is served in the **Restaurant on Deck 4**.

09:00+/- Disembarkation for **going ashore at Alkhornet**.

Any time after returning from your morning excursion, please pass by Reception to settle your account. This needs to be done before 17:00. Thank you!

12:30-13:30 Lunch is served in the **Restaurant on Deck 4**.

14:30 Disembarkation for **going ashore at Colesbukta**, our final landing for this trip.

18:00 Join the Expedition Staff in the **Bar on Deck 6** for Captain's Farewell Cocktails and a viewing of the slideshow.

19:00 Farewell dinner is served in the **Restaurant on Deck 4**.

20:30 After dinner please return your Muck boots to the **Lecture Room on Deck 3**. Please leave your life jackets in the cabin.



North Spitsbergen Basecamp - Kayaking, Hiking, Photo Workshop, Cleaning the Shores

Date: 3rd July 2025

Day 8 - Longyearbyen

Ensure all luggage is placed outside your cabin by 07:15 latest as we need to move it to the pier while you have breakfast. Keep the public areas clear when luggage is being moved.

- 07:00 Wakeup call.
- 07:30-08:30 Breakfast is served in the **Restaurant on Deck 4**. Please make sure that your luggage is outside your cabin before going to Breakfast.
- 08:30 Disembarkation for guests on flight **SK4491 – RED** baggage tags.
Please identify your luggage on the dock before boarding your bus.
The luggage will be loaded into a truck for transfer to the airport, where you collect it prior to check-in.
- 08:45 Disembarkation for guests on flight **SK4493 – BLUE** baggage tags.
Please identify your luggage on the dock before boarding your bus.
The luggage will be loaded into a truck and will meet you at the airport. The bus will take you into town for a drop-off at Svalbard Butikken for some free time. It will depart from the same place at **14:30** for the airport.
- 08:45 Disembarkation for guests staying in Longyearbyen.
Please collect your luggage and take it on the bus to town with you.
- 09:00 Disembarkation for guests on flight **SK4497 – ORANGE** baggage tags.
Please identify your luggage on the dock before boarding your bus.
The luggage will be loaded into a truck and will meet you at the airport. The bus will take you into town for a drop-off at Svalbard Butikken for some free time. It will depart from the same place at **17:30** for the airport.

From all the Expedition Team and Crew on board *MV Ortelius*, we wish you a safe onward journey, and thank you for sharing this incredible voyage with us.
We look forward to sailing with you again in the future.