



ANTARCTICA

BASECAMP

EXPEDITIONS



OCEANWIDE
EXPEDITIONS

WHY DO WE TRAVEL TO THE ANTARCTIC?

IT'S OUR PASSION!

We follow in the footsteps of explorers and venture into the pristine and remote polar world in pursuit of our passion – pioneering true ship-based expedition programs for activity minded people who wish to explore the unique wildernesses of the distant edges of the map. We explore an exciting mix of dramatic landscapes, from rugged mountains tumbling into the sea, immense glaciers and endless mazes of sea ice, to close wildlife encounters and a tangible grasp on the history of these fascinating frontiers.

Basecamp – Our activity base

The ship becomes our basecamp on selected dates. On selected voyages (see dates & rates) we offer “activity modules” which go beyond our normal shore program. The vessel will navigate to the best possible locations to accommodate the offered activities for as many guests as possible. The final itinerary is carefully determined by considering factors such as weather conditions, site accessibility, guest experience levels and safety. This approach allows mountaineers to access suitable climbing areas (ranging from snowshoe climbing to technical climbing), hikers to embark on rewarding treks, photographers to capture stunning landscapes, campers to enjoy shore-based experiences and kayakers and Zodiac passengers to explore areas beyond the ship's reach, maximizing opportunities for adventure and exploration.

Guests seeking a more sedate polar experience can enjoy our Zodiac excursions and follow the normal shore program and land excursions (easy to moderate walks and hikes with a focus on wildlife).

“

OUR PHILOSOPHY:

WE KEEP SEA DAYS MINIMAL,
AIMING FOR MAXIMUM TIME ASHORE.

”



“Because it's there”

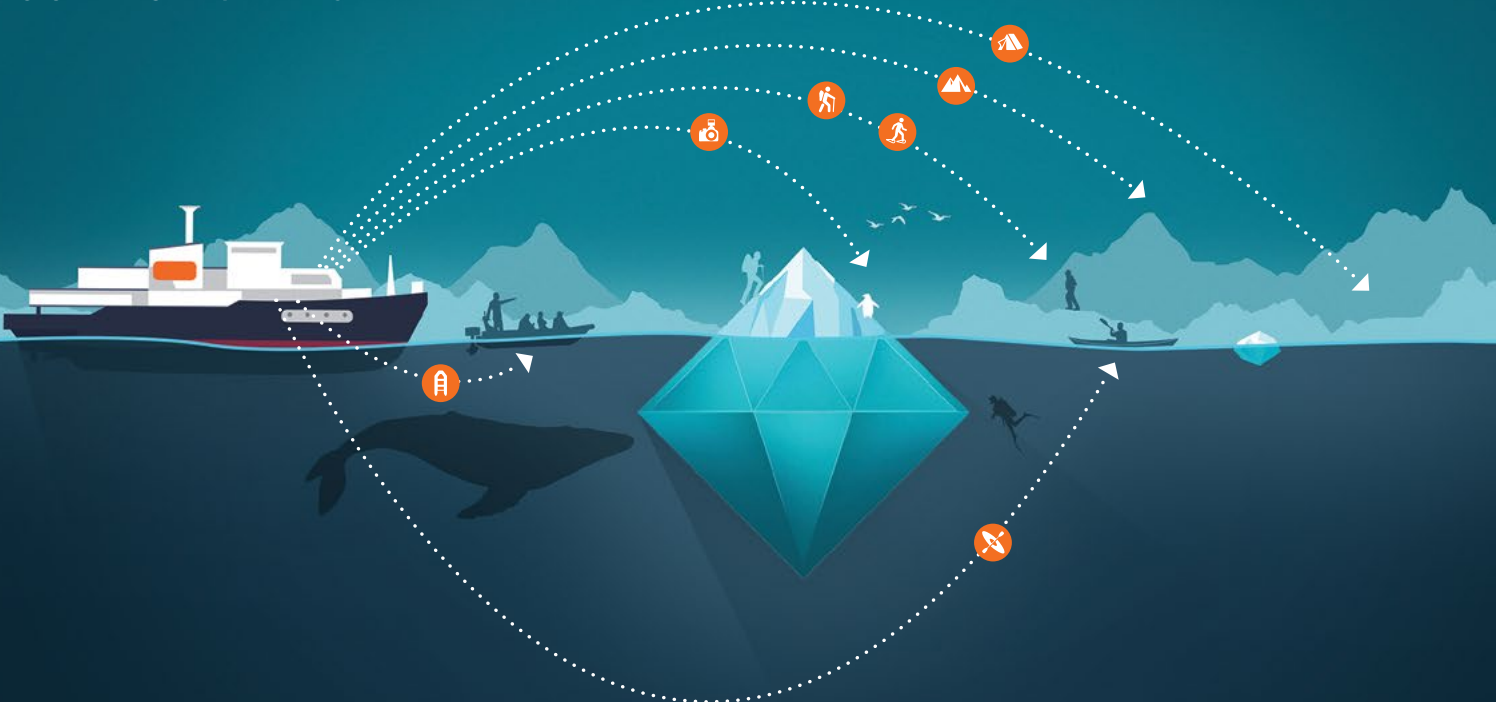
George Mallory (1886-1924)

George Mallory, an English mountaineer, who took part in the first three British expeditions to Mount Everest in the early 1920s was once famously quoted as having replied to the question “Why do you want to climb Mount Everest?” with the retort: “Because it's there”. These are regarded as the most famous three words in mountaineering.



BASECAMP

OUR ACTIVITIES



“Basecamp” places an emphasis on activities, including, but not limited to, Zodiac excursions, hiking, kayaking, and photography workshops. All activities will be conducted and led by trained expert guides. All adventure activities are free of charge on “Basecamp” voyages and are included in the package. On our regular voyages, activities can be booked as specialized standalone modules. Unless otherwise stated, these modules are supplemented by a fee. Please refer to “Basecamp” dates and activity codes on our regular voyages in the dates & rates. Please be aware that the availability of activities always depends on safe weather and ice conditions.

Basecamp – Our guides

An international team of enthusiastic polar experts and field guides will share their in-depth knowledge through lectures, briefings and field excursions. Lectures are selected and relevant to the destinations we travel to. In these, we cover major topics such as marine biology, geography, geology, glaciology, ornithology and history. Our staff is skilled, trained and qualified in the activity they oversee. These include photography, kayaking, Zodiac operations, or guarding against polar bears.

Expedition guides deliver informative ship program updates and actively guide our shore excursions in different languages.

Rubber boots

We keep a wide variety of rubber boots on board for our guests to use free of charge. If you need a particular size or have specific requirements, please contact your travel agent or Oceanwide Expeditions. Our rubber boots are of high quality and will keep your feet dry, warm, and comfortable during all landings.



ZODIAC CRUISING & SHORE PROGRAM

This is our core activity: guided shore excursions, walks and wildlife spotting and Zodiac cruises are included in the fare and will be offered to all passengers during each voyage.

Our voyages are primarily defined as exploratory, and we spend as much time ashore as possible. We can be flexible, taking advantage of wildlife opportunities by using our Zodiacs for both landings and cruises. Our knowledgeable guides assist on these outings, providing detailed information. This is supplemented by lectures on board which cover topics such as wildlife, history and glaciology.

On Basecamp voyages we offer a variety of activities (see hereunder), but participation is not obligatory.

- Kayaking
- Photo workshops
- Snowshoeing / hiking
- Mountaineering
- Camping



KAYAKING

We plan to offer 3–4 days of kayak excursions parallel to all other activities (6–7 outings morning, afternoon or evening) during designated “Basecamp” voyages.

Basic kayak experience, appropriate outdoor clothing and physical fitness is essential. The maximum number is limited to 14 kayakers per outing.

Special kayak gear will be provided: double seat kayaks, neoprene wet suits, life vests. Kayakers will bring their personal warm and protective clothes. An expedition kayak guide will supervise the activity. The kayakers will be accompanied by a safety Zodiac.

Basecamp voyage:

One kayak excursion free of charge. Every passenger will be able to take advantage of at least one outing.



PHOTO WORKSHOP

During “Basecamp” voyages we offer photo workshops for beginners and advanced photographers under the supervision of an expert photographer on board.

Everyone is welcome to participate, with no previous experience required. The workshop group will be accompanied by the photo expert during activity ashore. The maximum participants per photo workshop is aimed at 20 participants per outing per guide, so maximum attention can be paid to individuals. The workshop group will be taken on shore excursions whenever opportunities arise. Participants with a special interest in photography can bring their personal photography equipment.

During cruise days everyone will be able to attend photo lectures and learn more about objects, exposures and photo composition. The workshop intention is not to instruct on how to use specific camera models, but more to give an insight on better photo results by respecting basic rules of photography. Photographers can also take part in other activities of their choice.

Basecamp voyage:

Photo workshops are free of charge. The group size per outing is limited to 20 participants. Please note, we do not supply any photography equipment.



SNOWSHOEING/HIKING

We aim to offer several possibilities for getting active ashore. There will be easy, moderate and more demanding walks planned in the vicinity of the landing sites.

Walking & hiking opportunities will be offered which suit everyone's capability. In Antarctica we offer several long walks options. Hikers are recommended to bring a proper pair of hiking boots and gaiters, although waterproof rubber boots will be provided for use while on board. The hikes will be guided by experienced expedition guides.

Snowshoeing:

Snow-covered hills and mountains are often accessible on foot. Snowshoes are easy to use and don't require any technical skills. They make it easier and safer to walk on snow surfaces. They are available free of charge for everyone on board, fit all boot sizes and can be used in combination with Oceanwide muck boots.

Basecamp voyage:

The activity is free of charge.



MOUNTAINEERING

This is a technical activity for mountaineers who wish to go beyond the shore radius to reach higher grounds and viewpoints.

Mountaineering is performed under the leadership of a certified mountain guide. Depending on the landing site, glacier walks can vary from half day to full day outings. We plan to offer 4-5 glacier excursions parallel to all other activities during designated “Basecamp” voyages.

Mountaineering knowledge is preferable but not required. Physical fitness is essential. The maximum number is limited to 6 mountaineers per rope party with a maximum of 12 participants. Ropes and carabiners, harnesses, helmets, ice axes and crampons will be provided.

Participants must bring personal protective outdoor clothes. For technical mountaineering, suitable mountaineering boots must be brought. Full details can be found in the mountaineering manual. Crampons will be provided. For standard mountaineering, activities can be performed in Oceanwide muck boots.

Basecamp voyage:

Mountaineering activities are always dependent on weather and ice conditions, which can change rapidly in polar environments. Safety is our primary concern and our expert mountain guides will adapt the program based on site conditions and participant ability. Depending on these factors, mountaineering can range from snowshoe hiking, roped snowshoe outings on gentler terrain to more technical ascents requiring advanced skills and equipment.



FIELD CAMPING

We plan to offer all participants one night of camping. Everyone can participate, with no previous experience required.

The expedition leader and camping guides will decide the maximum number of campers per night based on local conditions and site guidelines.

Guides will conduct the activity, bringing the camping group to shore after dinner and returning to the vessel before breakfast. Camp will be made where wildlife will not be disturbed, and all necessary gear will be provided: wind and waterproof bivouac bags, mattresses, and polar sleeping bags.

Campers must bring their own warm and protective clothes. If local conditions prevent us from camping, we may attempt to camp on the open decks of the ship.

ACTIVITY GROUP SELECTION PROCESS

How am I assigned to activities?

During our Antarctic basecamp expeditions, the process of assigning guests to activities is influenced by a variety of dynamic factors that go beyond the order of booking. The unique challenges of Antarctic expeditions often make this approach impractical.

Here's how activities are planned, and groups are formed:

Key factors influencing activities

1 Weather conditions

Weather in Antarctica is highly unpredictable and heavily influences the sailing plan. Activities can only take place in locations where conditions are safe and suitable. Our vessel and expedition teams must remain flexible and may adjust the activity schedule to accommodate changing weather.

2 Optimal locations for activities

Specific sites are selected based on their suitability for particular activities. These locations are often spread out over large distances, requiring careful planning to maximize the chances of successful and enjoyable experiences.

3 Group dynamics and experience levels

- Where applicable, guests are grouped based on their prior experience with the activity, ensuring that everyone participates at a level suited to their skills and comfort.
- For mountaineering, activity leaders will evaluate gear (e.g., mountain boots) and experience to assess the appropriate level of activity.
- Efforts are made to accommodate requests for guests to join friends, partners, or family members in the same activity slot whenever feasible.

Terms and conditions

All travel elements relating to staying on board the vessel and/or excursions or programs off the ship (such as but not limited to excursions or programs on land, including Zodiac excursions) are at 100% at passenger's own risk. Oceanwide Expeditions is therefore not liable for any damage, such as but not limited to (bodily) injury, illness and death except for gross negligence. On all our transactions the general terms and conditions of Oceanwide Expeditions b.v. apply, registered at the Chamber of Commerce, Middelburg, the Netherlands. File nr.: 50590715. Upon request, a free copy will be provided.

4 Safety and success rates

The primary goal is to maximize the success rate of activities while ensuring safety. This may involve rescheduling groups to different days if weather forecasts predict unfavorable or unsafe conditions.

5 Daily adjustments

Groups and schedules are finalized daily based on the latest weather data and the expedition team's assessment.

How guests are assigned to activities

1 Initial group formation

During the Drake Passage crossing, guests will meet their activity leaders, discuss their experience levels, and, if relevant, have their gear reviewed. This information helps the leaders assign guests to appropriate groups.

2 Daily announcements

Each evening, groups and the next day's sailing plan are confirmed and announced, considering the latest weather updates and site availability.

3 Dynamic changes

Guests may encounter changes to their planned activity days to ensure the best possible experience, adapting to weather and site conditions.

Conclusion

The dynamic nature of Antarctic expeditions requires a flexible approach that balances weather, site accessibility, guest experience levels, and safety to provide the best possible experience. Guests can trust that the captain and expedition team will make every effort to create unforgettable moments while ensuring safety and comfort throughout the journey. However, there may be occasions when participation in activities is not possible due to unsafe environmental conditions at the activity site.