

# ARCTIC & ANTARCTIC

EXPEDITION CRUISES



**OCEANWIDE**  
EXPEDITIONS



PIONEERS OF POLAR TRAVEL

# TAKING YOU THERE IS WHY WE'RE HERE

PIONEERS OF SHIP-BASED EXPEDITIONS, INVENTORS OF BASECAMP ANTARCTICA, AND THE FIRST COMPANY TO TAKE TRAVELERS TO THE REMOTE ARCTIC ISLAND OF SPITSBERGEN. WITH OUR OWN FLEET OF ICE-STRENGTHENED VESSELS, WE GET YOU DEEP INTO THE HEART OF THIS OTHERWORLDLY ENVIRONMENT SO IT CAN GET DEEP INTO YOURS.



## MV HONDUIUS

Registered: The Netherlands  
Length: 107.6 meters  
Breadth: 17.6 meters  
Draft: 5.30 meters  
Ice class: PC 6 (equivalent 1A-Super)  
Displacement: 5,590 tonnes  
Propulsion: 2 x ABC main engines; total 4,200 kW  
Design operation speed: 15 knots  
Passengers: 170 in 80 cabins  
Staff & crew: 72  
New build 2019



## MV JANSSONIUS

Registered: The Netherlands  
Length: 108.6 meters  
Breadth: 17.6 meters  
Draft: 5.3 meters  
Ice class: PC 6 (equivalent 1A-Super)  
Displacement: 5,537 tons  
Propulsion: 2 x ABC main engines; total 4,200 kW  
Design operation speed: 15 knots  
Passengers: 170 in 80 cabins  
Staff & crew: 72  
New build 2019



## MV ORTELIUS

Registered: The Netherlands  
Length: 90.95 meters  
Breadth: 17.20 meters  
Draft: 5.4 meters  
Ice class: UL1 (equivalent to 1A)  
Displacement: 4,090 tons  
Propulsion: 6 ZL 40/48 SULZER  
Average cruising speed: 10.5 knots  
Passengers: 108 in 50 cabins  
Crew, guides, doctor: 41 / 8 / 1  
Various decks refurbished 2012-2017-2019



## MV PLANCIUS

Registered: The Netherlands  
Length: 89 meters  
Breadth: 14.5 meters  
Draft: 5 meters  
Ice class: 1D  
Displacement: 3,211 tons  
Propulsion: 3x Diesel-Electric  
Average cruising speed: 10.5 knots  
Passengers: 108 in 50 cabins  
Crew, guides, doctor: 37 / 8 / 1  
Various decks refurbished 2009-2018-2019



## SV REMBRANDT VAN RIJN

Registered: Vanuatu  
Length: 49.50 meters  
Breadth: 6.65 meters  
Draft: 2.8 meters  
Ice class: Enforced bow  
Displacement: 435 tons  
Propulsion: 2 Cummins / 550 KW  
Average cruising speed: 6.5 knots  
Passengers: 33 in 16 cabins  
Crew, guides: 10 / 2  
Completely refurbished in 2011



## WHAT MAKES US DIFFERENT

We are pioneers of ship based, dynamic, innovative expeditions that **optimize your polar experience**

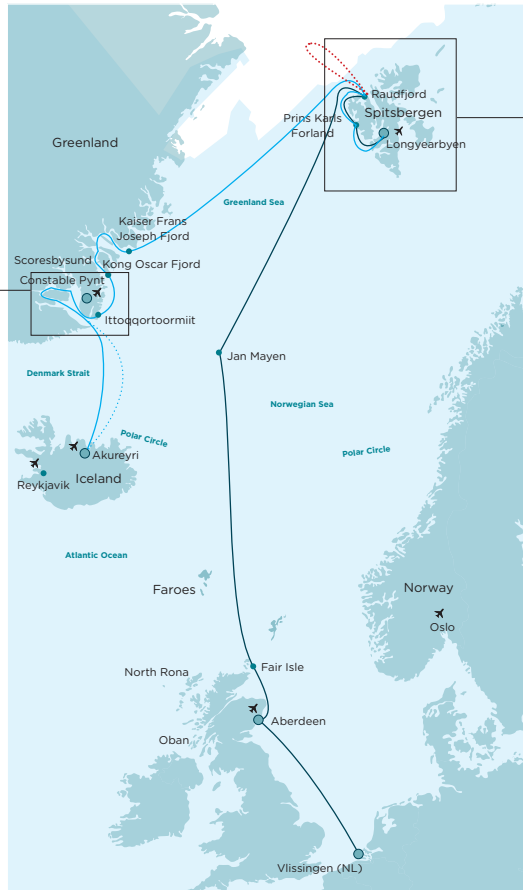
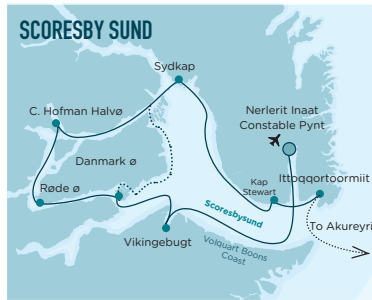
We design **more flexible itineraries** for moment-by-moment response to weather and wildlife conditions

Our activity-based cruises emphasize **minimum time on the ship, maximum time on shore**

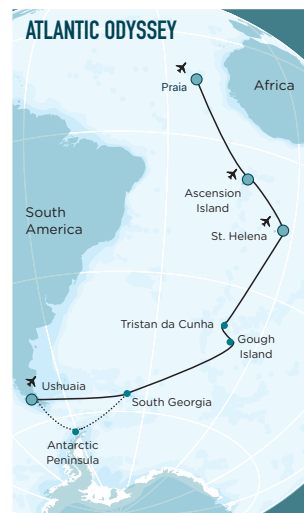
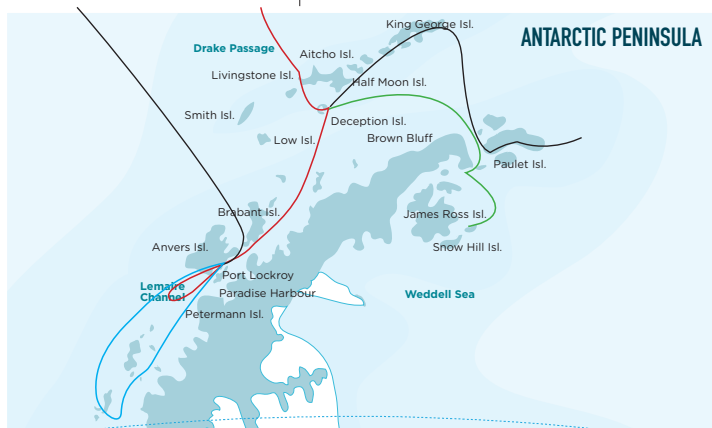
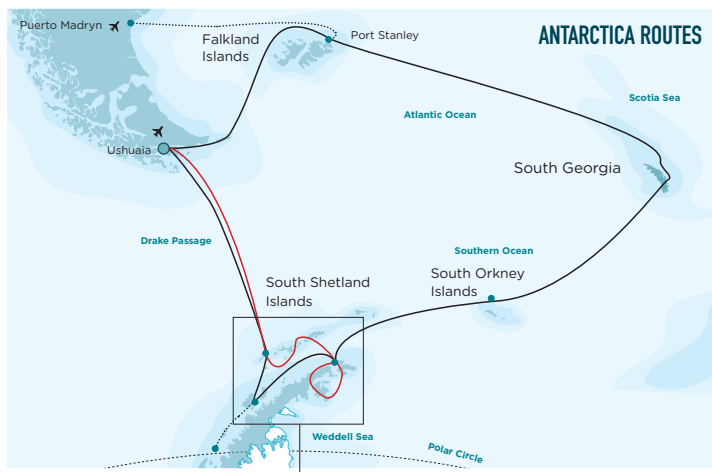
We own the ships we operate: a thoroughly outfitted fleet of ice-strengthened vessels



# ARCTIC



# ANTARCTICA



# ACTIVITY OPTIONS

## SEA, AIR & LAND



### **HIKING & SNOWSHOEING**

We provide rubber boots for hiking and offer easy, moderate, and more demanding walks in the vicinity of our landing sites. Snowshoes that fit all boot sizes are available for everyone, free of charge.

### **ZODIAC CRUISING & SHORE PROGRAM**

Guided shore excursions, walks, wildlife spotting, and Zodiac cruises are included in the trip fare and offered to all passengers on all voyages. Our emphasis is always wildlife viewing, shore landings, and outdoor activities, all of which we facilitate through the use of our Zodiacs.

### **CAMPING**

In Antarctica we offer open-air camping, a rare opportunity to sleep under the polar stars for a unique expedition experience. Special equipment is provided. The camping group is taken to shore after dinner and returned to the ship before breakfast.

### **KAYAKING**

We offer kayaking for all passengers on select voyages. Special kayak gear is provided, including single- and double-seat kayaks, neoprene wet suits, and life vests. A kayak guide supervises the activity, and all kayakers are accompanied by a Zodiac boat for their safety.

### **PHOTO WORKSHOP**

Some voyages offer photo workshops for multiple experience levels led by an onboard photographer. Participants learn about objects, exposures, composition, and basic photography rules both on the ship and off.

### **SKI MOUNTAINEERING**

This adventurous activity allows experienced skiers to climb and ski in sometimes steep, glaciated, snowy terrain. Though potentially dangerous, ascents and descents are led by certified mountain guides.

### **MOUNTAINEERING**

For those eager to enjoy the summits, we offer polar mountaineering under the leadership of a certified mountain guide. Physical fitness and proper boots are essential, though we provide basic gear: ropes, carabiners, harnesses, helmets, ice axes, and crampons.

### **POLAR DIVING**

This activity is for advanced divers with sufficient cold-water, dry-suit experience. Dive leaders and guides are responsible for your safety during operation. Basic equipment is available on board (scuba tanks, compressors, weights, and other essentials), but divers must bring their own optional gear.

### **HELICOPTER FLIGHTS**

On specific Ortelius voyages, we use helicopters to get closer to the polar wildlife, allowing you to set foot in landscapes often inaccessible by any other means. Take flight above the vast icepack of the Weddell or Ross Sea, enjoying the great white wilderness of the Antarctic coastline.

[WWW.OCEANWIDE-EXPEDITIONS.COM](http://WWW.OCEANWIDE-EXPEDITIONS.COM)

  
**OCEANWIDE**  
EXPEDITIONS

#### CONTACT & BOOKING INFORMATION

##### Oceanwide Expeditions | Head Office

Visserijkade 5 • 4382 ZA Vlissingen • The Netherlands  
T +31 (0) 118 410 410 F +31 (0) 118 410 417  
E [info@oceanwide-expeditions.com](mailto:info@oceanwide-expeditions.com)

##### Oceanwide Expeditions | USA & Canada Office

222 Pennbright Drive, Suite 109-A • Houston, TX 77090 • USA  
T +1 800 453 7245 or +1 281 741 2372 F +1 281 749 8220  
E [usa@oceanwide-expeditions.com](mailto:usa@oceanwide-expeditions.com)