

# DELAWARE BASKETBALL

## 2012-13 GAME NOTES

Maggie Hayon, UD Assistant Sports Information Director • Office: (302) 831-6389 • Cell: (920) 912-6635 • Email: mhayon@udel.edu  
 www.bluehens.com • twitter.com/udbluehens • facebook.com/DelawareBlueHens • bluehens.com/hensallaccess



### Game 14: Delaware (10-3; 1-0) at Old Dominion (11-3; 2-0)



Sunday, January 13, 2013 • 2 p.m. • Norfolk, Va. • Ted Constant Convocation Center

Game Information	Delaware	Old Dominion
TV ..... n/a	Overall Record (CAA)..... 10-3 (1-0)	Overall Record (CAA)..... 11-3 (2-0)
Radio ..... The Ticket 1290 AM	Road Record (CAA) ..... 3-1 (0-0)	Road Record (CAA) ..... 6-2 (1-0)
..... Matt Janus (play-by-play), Christine Motta (analyst)	Head Coach..... Tina Martin	Head Coach..... Karen Barefoot
Live Stats/Video..... www.odusports.com	Record at Delaware..... 319-180 (17 <sup>th</sup> season)	Record at Old Dominion ..... 21-24 (2 <sup>nd</sup> season)
All-Time Series ..... Old Dominion leads, 17-6	Overall Record..... 319-180 (17 <sup>th</sup> season)	Overall Record ..... 231-167 (15 <sup>th</sup> season)

2012-13 Schedule/Results			
<b>November</b>			
9	%SAM HOUSTON STATE		W 63-31
11	%GEORGETOWN		L 56-62
14	at %Duquesne		L 47-51
20	PROVIDENCE		W 64-46
28	SAINT BONAVENTURE		W 68-58
<b>December</b>			
5	at Rhode Island	ESPN3.com	W 57-40
9	PRINCETON		W 59-58
20	No. 9/8 MARYLAND		L 53-69
22	at Monmouth		W 82-53
29	vs. ^ Villanova		W 59-45
30	vs. ^ Duquesne		W 60-45
<b>January</b>			
2	at St. John's	ESPN3.com	W of 60-59
10	*GEORGE MASON		W 62-27
13	at *Old Dominion		2 p.m.
15	at *Northeastern		7 p.m.
20	*TOWSON		2 p.m.
24	*UNCW		7 p.m.
27	at *Drexel		2 p.m.
29	*NORTHEASTERN		7 p.m.
31	at *Georgia State		7 p.m.
<b>February</b>			
3	*HOFSTRA		2 p.m.
7	at *Towson		7 p.m.
10	at *James Madison		2 p.m.
14	*OLD DOMINION		7 p.m.
17	at *William & Mary		2 p.m.
19	at *George Mason		7 p.m.
24	*JAMES MADISON	CSN-MA, TCN	4:30 p.m.
28	at *Hofstra		7 p.m.
<b>March</b>			
3	*DREXEL	CSN-MA, TCN	3:30 p.m.
6	*GEORGIA STATE		7 p.m.
14-17	CAA Tournament (The Show Place Arena - Upper Marlboro, Md.)		
% Preseason WNIT			
^ Blue Sky Classic (Hanover, N.H.)			
<i>Times and dates subject to change</i>			

Storylines
<ul style="list-style-type: none"> <li>The Blue Hens play their first CAA road game of the season as they travel to Norfolk, Va. to take on Old Dominion in a 2 p.m. tip at the Ted Constant Convocation Center.</li> <li>Today's game is the 24th overall between Delaware and the Lady Monarchs. ODU holds the all-time series advantage with a record of 17-6 over UD.</li> <li>UD head coach Tina Martin will coach in her 500th career game today.</li> <li>Delaware is riding a four-game winning streak after defeating George Mason (Jan. 10), St. John's in overtime on Jan. 2 and Villanova (Dec. 29) and Duquesne (Dec. 30) to capture the 2012 Dartmouth Blue Sky Classic title.</li> <li>The Hens allowed George Mason to score just 27 points on Thursday, the lowest allowed by a UD team since a 71-9 victory over Catonsville (Md.) CC on Feb. 27, 1973.</li> <li>Delaware is ranked fifth in the NCAA in FG % defense at 31.5 and seventh in scoring defense as they allow just 49.5 points per contest.</li> <li>Elena Delle Donne has tallied 31 consecutive free throws made since Dec. 20.</li> <li>Delaware, now in its 12th season in the Colonial Athletic Association, holds an overall regular season record of 135-61 against conference opponents during that time period.</li> <li>The Blue Hens are now 10-2 in CAA openers since they joined the league in 2001-02.</li> <li>The Hens have won three come-from-behind games this season.</li> <li>Delaware also held three opponents to 12 or less points in a half this season (Villanova/11 pts; Duquesne/12 pts; George Mason 12 pts)</li> <li>Delaware hosted a record crowd of 5,089 strong against Maryland for the third sellout in school history.</li> <li>Delaware is currently ranked second in the CollegeInsider.com Mid-Major Poll, moving up one spot from their third place slot from last week.</li> </ul>

Stat Comparison	UD	ODU
Points	60.8	66.6
Points Allowed	49.5	54.5
Scoring Margin	+11.2	+12.1
Field Goal %	.380	.421
Opp Field Goal %	.315	.344
3-Point %	.307	.288
Opp 3-Point %	.242	.261
Free Throw %	.705	.652
Opp Free Throw %	.690	.640
Rebounds	42.1	37.1
Opp Rebounds	37.5	42.5
Rebound Margin	+4.5	-5.4
Assists	10.5	15.7
Turnovers	13.6	17.8
Blocks	3.5	4.4
Steals	6.8	11.5

### Blue Hen Probable Starters

<b>10</b> Kayla MILLER	<b>15</b> Akeema RICHARDS	<b>22</b> Lauren CARRA	<b>11</b> Elena DELLE DONNE	<b>12</b> Danielle PARKER

G • Sr. • 5-8	G • Jr. • 5-7	G • Sr. • 5-9	F • Sr. • 6-5	F • Sr. • 6-2
3.6 ppg	5.2 ppg	12.0 ppg	22.7 ppg	9.5 ppg
1.1 rpg	2.8 rpg	5.9 rpg	10.3 rpg	9.2 rpg
.357 FG %	.311 FG %	.365 FG %	.435 FG %	.472 FG %
28.8 mpg	19 assists	16 3-pointers	.519 3 FG %	8 assists
35 assists	2 blocks	30 assists	.949 FT %	3 blocks
15 steals	9 steals	10 steals	13 blocks	19 steals

# University of Delaware Sports Information

631 South College Avenue, Bob Carpenter Center, Newark, DE 19716

## Maggie Hayon - Assistant SID (WBB Contact)

Office.....(302) 831-6389  
Cell.....(920) 912-6635  
Email.....mhayon@udel.edu

## Scott Selheimer - Assistant AD/Media Relations

Kevin Tritt - Assistant SID

Adam Nichols - SID/Multimedia Assistant

Linda Brock - Senior Secretary

Sports Information Office Phone.....(302) 831-2186  
Sports Information Fax.....(302) 831-8653

## Postgame Interviews

Delaware head coach Tina Martin holds a press conference in the BCC Auditorium, room 102, approximately 10 minutes after the game following a cooling off period and her postgame show with the Blue Hen Basketball Radio Network.

Selected players will be available as well, usually while Coach Martin is conducting her radio interview. The University of Delaware locker room is closed to members of the media during regular season competition.

Quote sheets will be done by the UD Athletics Media Relations staff for both teams, if requested, and will be available in the media room. Pregame interview requests for players or assistant coaches should also be made prior to gameday. Approval is on a case-by-case basis.

## Non-Gameday Interviews

All requests to interview players or coaches during the week should be made through the Athletics Media Relations Office and at least one day in advance so that academic or athletic schedules are not disrupted.

## Credentials/Press Row

Requests for press credentials and parking passes should be made to Assistant AD/Media Relations Scott Selheimer. Please make arrangements at least two days in advance of each game. Press row at Bob Carpenter Center/Acierno Arena is located at courtside opposite the player and game officials' benches. All press guests are required to show a pass for admittance to the arena. The media entrance is located in the rear of the building (loading dock) on the east side of the Bob Carpenter Center. Parking is located in the rear of the Bob Carpenter Center.

## Series History

Today's game between the Blue Hens and Lady Monarchs is the 24th overall in the 41 years of Delaware women's basketball. ODU holds the all-time series advantage with a record of 17-6 over UD.

Delaware swept the season series between the two CAA teams last year and has won three of the last five contests.

In their last meeting, the Hens posted their 18th straight victory on the season and knocked Old Dominion out of the CAA Tournament for the second consecutive season with a 74-54 victory in the CAA Quarterfinals on March 9, 2012. Elena Delle Donne collected a double double of 21 points and 10 rebounds while three other Blue Hens recorded double figure scoring games.

## Last five meetings

Jan. 16, 2011	Old Dominion 62, Delaware 59	Home
Feb. 27, 2011	Old Dominion 70, Delaware 61	Away
March 11, 2011	#7 Delaware 72, #2 Old Dominion 55	Neutral CAA Tournament
Feb. 9, 2012	Delaware 76, Old Dominion 63	Home
March 9, 2012	#1 Delaware 74, #8 Old Dominion 54	Neutral CAA Tournament

**At Delaware:** ODU leads, 6-3

**At Old Dominion:** ODU leads, 9-2

**Neutral Sites:** ODU leads, 2-1

## Delaware vs. CAA Foes

Delaware, now in its 12th season in the Colonial Athletic Association, holds an overall regular season record of 135-61 against conference opponents during that time period.

The Blue Hens went a perfect 18-0 in the CAA regular season during the 2011-12 campaign, becoming the first conference team to go undefeated in league play since Old Dominion went 18-0 in 2001-02.

Dating to the 2010-11 season Delaware has won 20 straight CAA regular season games, second only to a 24-game streak in the America East Conference from Feb. 3, 2000 to Feb. 24, 2001.

## Last Time Out

Delaware recorded its best defensive effort in 40 years Thursday night as the Blue Hens shut down George Mason for a 62-27 victory in its CAA opener at the Bob Carpenter Center.

All-American Elena Delle Donne led the offense with a game-high 19 points but the defense was the star of the night as the Blue Hens held Mason to 17 percent shooting from the field, forced 13 turnovers, and controlled the boards by a 47-27 margin.

Jaquetta May added nine points and seven rebounds for the Blue Hens while Danielle Parker chipped in with eight points and seven rebounds, Courtini Green added eight points, and Stephanie Leon had seven rebounds. In all, 10 different UD players scored a point and 12 different players pulled at least one rebound.

## Offense Wins Games... Defense Wins Championships

Delaware currently (1/10) ranks fifth in the nation in field goal percent defense at 31.5 and seventh in scoring defense as they allow just 49.5 points per contest.

The 27 points against George Mason (1/10) were the lowest allowed by a Delaware team since the Blue Hens defeated Catonsville (Md.) Community College 71-9 on Feb. 27, 1973.

The Patriots shot just 17 percent (8-48) from the field, the lowest by an opponent since Alcorn State shot 21.2 percent during a 76-36 UD win on Dec. 30, 2010.

Earlier this season, the Blue Hens allowed just 31 points during the season-opening victory over Sam Houston State, the fewest points allowed since a 66-28 win over Towson on Feb. 7, 2002. The Bearkats went 11 of 51 (21.6 percent) from the field, including only 1 of 13 (7.7 percent) from three-point range.

## Martin at 500 Career Games

Delaware head coach Tina Martin will coach her 500th career game Sunday at Old Dominion. In her 17 seasons as the head coach at Delaware, Martin holds a 319-180 (.639) record.

She is the winningest men's or women's basketball coach in school history and earned her 300th career victory on Feb. 12, 2012 when the Hens cruised past Georgia State, 94-56, scoring the most points in a game during Martin's tenure.

Martin has also won 154 CAA games, the second most in league history, behind only Old Dominion's Wendy Larry, who won 353 from 1992-2011.

## Hens in CAA Openers

Delaware opened CAA play with a 62-27 victory over George Mason (1/10). The Blue Hens are 10-2 in CAA openers since they joined the league in 2001-02.

## Blue Hens in National Rankings (Jan. 10)

5	FG % Defense	31.5
7	Scoring Defense	49.5
11	Turnovers Per Game	13.6
12	Three Pt. FG Defense	24.2
33	Personal Fouls Per Game	13.9
47	Win-Loss Percentage	76.9
53	Scoring Margin	11.2
71	Rebound Margin	4.6
88	Turnover Margin	2.15
109	Free Throw %	70.5
120	Assist Turnover Ratio	0.77

To be ranked in individual categories, a basketball student-athlete must appear in at least 75.0% of the team's games played.

73	Danielle Parker	RPG	9.2
----	-----------------	-----	-----

## Free Throw Queen

Since the Dec. 20 game against Maryland, Elena Delle Donne has collected 31 straight free throws and went 13-for-13 at St. John's.

She holds the school record of 52 straight free throws made, recorded Feb. 20, 2011 to March 12, 2011. Additionally, she posted 39 straight free throws made from Jan. 7, 2010 to Jan. 24, 2010.

Linda Cyborski, a former NCAA free throw percentage record holder (.937; 1990-91), tallied 31 consecutive made free throws from Nov. 25, 1990 to Jan. 23, 1991.

## Overtime Experience... or Lack Thereof

Prior to January 2's overtime win at St. John's, the Hens had not played an overtime game since Feb. 13, 2011 when they defeated William & Mary, 70-66, on the road.

During the 2009-10 season, Delaware played four overtime games, going 1-3 in those contests.

## Comeback Kids

For the third time this season, Delaware defeated an opponent after being down at halftime. The Blue Hens trailed by two at 32-34 to Villanova on Dec. 29 before putting the defensive pressure on in the second half and winning 59-45.

Earlier this season, St. Bonaventure held a 15-point advantage (30-15) going into the half before UD came back and won, 68-58 and the Blue Hens were down to Princeton, 25-32, before coming back and defeating the Tigers, 59-58.

## Carra Hits 1,000

Senior Lauren Carra reached the 1,000-point milestone on a free throw in the first half against Maryland, becoming just 23rd player in UD history to reach the mark.

## More Career Marks for Carra

In addition to collecting her 1,000th career point against the Terps, Lauren Carra also notched her 3,000th career minute and 300th career defensive rebound against Maryland.

## Looking To 1000 Points

Danielle Parker looks to hit 1,000 points this season as she has amassed 918 points in her UD career. Elena Delle Donne cracked the 1,000 point mark during the 2010-11 season while Lauren Carra collected her 1,000th point against Maryland on December 20, 2012.

## Record Attendance Set at the Bob

For just the third time in school history, a sell-out crowd watched the Delaware women's basketball team in action for a single game at the Bob Carpenter Center.

A record-crowd of 5,089 Dec. 20 bested the previous attendance mark of 5,043, set Feb. 26, 2012 against Northeastern.

## BCC Women's Basketball Sellouts

5,089	#9/8 Maryland	Single	12/20/12
5,043	Northeastern	Single	2/26/12
5,021	Drexel	Single	1/22/12
5,000	Drexel	Doubleheader	3/3/93
5,000	Delaware State	Doubleheader	11/22/96
5,000	Drexel	Doubleheader	1/27/99

**Delle Donne Listed As Day-To-Day**

All-American and National Player of the Year candidate Elena Delle Donne has missed six of UD's games this season as she is battling symptoms of Lyme Disease. She is currently listed as day-to-day, but is expected to start against Old Dominion.

**Delle Donne Moves Up in CAA History**

With 813 career field goals made, Elena Delle Donne has moved to fourth all-time in CAA women's basketball history. With the amount, the senior passed JMU's Tamara Young (2004-08; 771 FG) and VCU's Courtney Hart (2008-12; 770 FG). ODU's Celeste Hill (1990-94) is third on the list with 841 field goals made.

**Delle Donne Moves Up in CAA History... Part Two**

Elena Delle Donne collected a season-high four blocked shots against Duquesne on Dec. 30 and moved into third place, past ODU's Nyree Roberts (1994-98; 214 blocks) with a total of 217 career blocks. George Mason's Trish Halpin (1997-00) is in second place with 236 career blocks.

**NCAA Tournament Contenders**

Delaware has faced five teams this season that earned berths into the 2012 NCAA Tournament. Maryland advanced the furthest of the four teams, making it to the Elite Eight before losing to Notre Dame, the eventual national runner-up.

The Blue Hens finished 3-2 against 2012 NCAA Tournament teams during the 2012-13 regular season after losses to Georgetown and Maryland and victories over St. Bonaventure, Princeton and St. John's.

This past March, UD competed in their third NCAA Tournament and won the first NCAA Tournament game in men's or women's school history.

**Career Milestones for Parker**

Danielle Parker notched her 800th career rebound, 100th career start, 300th career offensive rebound and 200th career free throw against St. Bonaventure (11/28).

**UD Loses Back-To-Back For First Time Since 2010**

Delaware's 47-51 loss at Duquesne marked the first time the Blue Hens have tallied back-to-back regular season losses since 2010 when Delaware suffered three straight losses to Penn State, Saint Joseph's, and Vanderbilt from Dec. 19-29.

**Blue Hens' Road Streak Broken**

Delaware was riding a 10-game road winning streak before losing at Duquesne, 47-51, on 11/14. The Blue Hens had previously lost 12/28/11 at No. 5 Maryland, 76-85.

Additionally, UD owned a four-game winning streak when playing their first road game of the season. In 2008, the Blue Hens had lost, 43-91, at No. 3 Maryland.

**Returning/Lost**

Delaware returns all five starters, its top five scorers, from last year's record-breaking squad.

	2011-12	Return	Lost	% Ret.
Points	2363	2128	235	90.1
FG Made	877	786	91	89.6
3-FG Made	122	118	4	96.7
FT Made	487	438	49	89.9
Rebounds	1308	1078	230	82.4
Off. Reb.	425	336	89	79.1
Def. Reb.	883	742	141	84.0
Assists	475	440	35	92.6
Blocks	127	119	8	93.7
Steals	231	204	27	88.3
Minutes	6600	5645	955	85.5

**Preseason Honors Rolling In For Delle Donne**

UD senior Elena Delle Donne was a unanimous selection to the Preseason Associated Press All-America Team last month. She also was named to the Preseason Wade Player of the Year Watch List, and is a candidate for the Senior CLASS Award. Additionally, Delle Donne was tabbed the CAA Preseason Player of the Year at the league's Media

**Blue Hens Ranked in Both Preseason Polls**

Delaware was ranked for the majority of last season, rising as high as No. 7 in the final Associated Press Poll, and the Blue Hens started the season ranked again in both of this year's preseason polls.

UD was picked No. 11 in the Associated Press Preseason Poll and 10th in the USA Today/ESPN Top 25 Poll, the first time in school history the Hens have been ranked in the preseason. They have currently dropped from both polls.

**UD Picked No. 1 in Preseason Mid-Major Poll**

Delaware was selected to the top spot of the CollegelInsider.com Mid-Major Preseason Poll. The Blue Hens picked up 772 points and 29 of the 31 first place votes.

**UD Has Record-Breaking 2011-12 Campaign**

Delaware won a school-record 31 games during last season, including a record 21 straight from Jan. 5 through Mar. 18. The Blue Hens' 21 consecutive wins were tied for third longest in the nation, behind only Baylor which went undefeated and Stanford which won 32 straight.

UD was one of four Division I teams with two or fewer losses, along with Baylor (40-0), Stanford (35-2), and Green Bay (31-2).

The Blue Hens became the first CAA team to win 30 games in a season since Old Dominion went 34-2 in 1996-97. Delaware also went a perfect 18-0 in the CAA regular season, becoming the first conference team to go undefeated in league play since Old Dominion went 18-0 in 2001-02. Dating back to the 2010-11 season Delaware has won 19 straight CAA regular season games, second only to a 24-game streak in the America East conference from Feb. 3, 2000 to Feb. 24, 2001.

**Blue Hens Win First CAA Title**

Delaware used a dominating defensive effort to defeat Drexel, 59-43, on March 11 to capture its first ever Colonial Athletic Association Tournament title.

The league title was the fifth in school history for the Blue Hens, who captured East Coast Conference titles in 1989, 1990 and 1991, along with the America East crown in 2001.

**Delle Donne, Hens Among Nation's Leaders**

Elena Delle Donne led the nation with 28.1 points per game last season, more than four points per game more than any other player. She also finished eighth in the nation with an 88.9 free throw percentage, 13th with 17 double-doubles, 17th with 10.3 rebounds per game, 18th with 2.61 blocks per game, and 20th with a 52.0 field goal%.

As a team Delaware led Division I with an 80.5 free throw percentage, was sixth with a +10.5 rebounding margin, 10th with 13.3 turnovers per game, 11th with a +16.6 scoring margin, 12th with a 44.9 field goal percentage, and 15th with a 1.08 assist/turnover ratio.

**2011-12 Women's Basketball Division I Scoring Leaders**

1.	Elena Delle Donne (Delaware)	28.1 ppg
2.	Kevi Luper (Oral Roberts)	23.8 ppg
3.	Tavelyn James (Eastern Michigan)	23.8 ppg
4.	Heather Butler (UT Martin)	23.8 ppg
5.	Kristina Santiago (Cal Poly)	23.4 ppg

**Delle Donne in the UD Record Book**

Elena Delle Donne is the Delaware all-time leading scorer with 2,417 points and a 26.6 scoring average (Lori Howard is second at 17.7 ppg). Delle Donne is also UD's career leader with 817 field goals made, 1,710 field goals attempted, 623 free throws made, a .909 free throw percentage, 168 three-pointers made, a 40.4 three-point percentage. She also is fourth in Blue Hen history with 685 free throws attempted and ninth with 838 rebounds.

Delle Donne has already reached the 30-point mark 30 times in her career, including a school-record 54 at James Madison on Feb. 18, 2010. Last season she reached the 40-point mark four times, including a season-best 42 at Hofstra on Feb. 16. She also scored 41 points against the Pride on Jan. 26, setting a Bob Carpenter Center record.

**Delle Donne in the CAA Record Book**

Points Scored	Player	Year
1.	2,667 Dawn Evans, James Madison	2007-11
2.	2,581 Gabriela Marginean, Drexel	2006-10
3.	2,417 Elena Delle Donne, Delaware	2009-Pres.
4.	2,121 Tamara Young, James Madison	2004-08

**Delaware Basketball on the Net**

Delaware athletics information is available via the internet through www.bluehens.com. Box scores and game stories are typically posted within an hour of the conclusion of each UD basketball game, while cumulative statistics are also updated and posted after each contest. Media notes are available in a PDF format within 24 hours of the start of each game. In addition, live stats and video are available for all UD home games.

**Delaware Basketball on the Radio**

All University of Delaware women's basketball games will be carried on The Ticket 1290 AM as well as WDOV 1410 AM. Matt Janus (play-by-play) and Christine Motta (color) will call all the action. Additionally, most UD women's basketball games are broadcast by the UD student radio station, WVUD 91.3 FM. Real Audio links for both broadcasts are available through the UD Web site.

**Delaware Basketball on Television**

The University of Delaware women's basketball team will appear on television twice during the 2012-13 regular season as announced by the Colonial Athletic Association at the league's Media Day.

The Blue Hens will host James Madison on Sunday, February 24 at 4:30 p.m. in a game that will be televised by The Comcast Network, Comcast SportsNet Mid-Atlantic, Comcast SportsNet New England, and Charter Sports Southeast. The following Sunday, March 3, Delaware will host Drexel in a contest to be broadcast by Comcast SportsNet Philadelphia, Mid-Atlantic and New England.

The CAA Tournament Semifinals on Saturday, March 16, as well as the championship game the following day, will be shown by The Comcast Network, Comcast SportsNet Mid-Atlantic Plus, and Comcast SportsNet New England.

Additionally, the Blue Hens' road game at Rhode Island on Wednesday, December 5 was available over the internet at ESPN3.com.

**Watch Us On The Web**

For the second consecutive year, all Blue Hen basketball home games will be webstreamed live at www.bluehens.com.

**Women's Basketball Quick Facts**

Location .....	Newark, Del.
Founded.....	1743
Enrollment.....	16,000 Undergraduates
Nickname.....	Fightin' Blue Hens
Official Mascot.....	YoUDee
Colors.....	Royal Blue & Gold
Arena (Capacity) .....	Bob Carpenter Center (5,000)
Affiliation.....	NCAA Division I
Conference .....	Colonial Athletic Association (CAA)
President.....	Dr. Patrick T. Harker
Director of Athletics & Recreation Services .....	Eric Ziady

Head Coach.....	Tina Martin
Alma Mater.....	Lock Haven '86
Record at Delaware/Career .....	309-177 (16 seasons)
Associate Head Coach .....	Jeanine Radice
Assistant Coaches.....	Tom Lochner, Tiara Malcom
Director of Basketball Operations.....	Allie Fedorowicz



**Associated Press Top 25 Poll (Week 10 - Jan. 7)**

Rk.	Team	Record	Points
1	Baylor (32)	12-1	984
2	Notre Dame (2)	12-1	945
3	Connecticut (2)	12-1	907
4	Duke (4)	13-0	903
5	Stanford	13-1	860
6	Kentucky	14-1	791
7	California	12-1	747
8	Penn State	12-2	706
9	Tennessee	11-3	667
10	Maryland	11-3	596
11	North Carolina	15-1	581
12	Purdue	13-2	537
13	Georgia	13-2	506
14	UCLA	11-2	451
15	Louisville	12-3	411
16	Oklahoma	12-2	388
17	Kansas	11-2	264
18	Florida State	12-2	255
19	South Carolina	13-2	255
20	Texas A&M	12-4	241
21	Oklahoma State	11-2	229
22	Dayton	12-1	225
23	Colorado	11-2	121
24	Miami (FL)	12-2	115
25	Iowa State	11-1	91

**Others receiving votes:** Nebraska 74, Vanderbilt 59, Michigan 25, Syracuse 22, Arkansas 14, DePaul 7, Michigan State 7, UTEP 6, Illinois 4, Villanova 3, Texas Tech 2, Wyoming 1

**ESPN/USA Today Top 25 Poll (Week 10 - Jan. 8)**

Rk.	Team	Record	Points
1	Baylor (21)	12-1	758
2	Connecticut (4)	12-1	724
3	Notre Dame (4)	12-1	700
4	Stanford	13-1	683
5	Duke (2)	13-0	678
6	Kentucky	14-1	620
7	California	12-1	589
8	Penn State	12-2	550
9	Tennessee	11-3	511
10	Maryland	11-3	462
11	Purdue	13-2	459
12	Georgia	13-2	405
13	Louisville	12-3	367
14	Oklahoma	12-2	353
15	UCLA	11-2	323
16	South Carolina	13-2	273
17	Dayton	12-1	241
18	Oklahoma State	11-2	224
19	Kansas	11-2	222
20	North Carolina	15-1	218
21	Texas A&M	12-4	167
22	Florida State	12-2	140
23	Nebraska	11-4	133
24	Iowa State	11-1	88
25	Miami (FL)	12-2	48

**Others receiving votes:** Syracuse 44, Colorado 28, Vanderbilt 25, DePaul 17, Toledo 10, South Florida 5, UTEP 3, Michigan 2, Villanova 2, Ohio State 1, Iowa 1, St. John's 1

**College Insider Mid-Major Poll (Week 10 - Jan. 8)**

Rk.	Team	Points	1 <sup>st</sup> Votes
1.	Gonzaga	732	15
2.	Delaware	704	5
3.	Toledo	693	4
4.	Chattanooga	691	6
5.	Green Bay	689	1
6.	Creighton	600	
7.	Boston	531	
8.	Princeton	492	
9.	MTSU	489	
10.	Florida Gulf Coast	442	
11.	Hartford	399	
12.	Bowling Green	395	
13.	Marist	344	
14.	BYU	343	
15.	Quinnipiac	276	
16.	Arkansas - Little Rock	275	
17.	South Dakota State	265	
18.	Hampton	258	
19.	Missouri State	237	
20.	Appalachian State	218	
21.	Pacific	194	
22.	Western Kentucky	162	
23.	James Madison	132	
24.	San Diego	123	
25.	Harvard	118	

5. 2,112 Celeste Hill, Old Dominion 1990-94

**Free Throws Made**

1.	684	Gabriela Marginean, Drexel	2006-10
2.	623	<b>Elena Delle Donne, Delaware</b>	<b>2009-Pres.</b>
3.	578	Dawn Evans, James Madison	2007-11
4.	538	Kyra Kaylor, William & Mary	2003-08
5.	535	Tiara Malcom, Delaware	2001-05

**Blocked Shots**

1.	255	Tiffany Benson, William & Mary	2006-10
2.	236	Trish Halpin, George Mason	2007-10
3.	217	<b>Elena Delle Donne, Delaware</b>	<b>2009-Pres.</b>
4.	214	Nyree Roberts, Old Dominion	1994-98
5.	208	Jess Fuller, Hofstra	2007-10

**Field Goals Made**

1.	904	Gabriela Marginean, Drexel	2006-10
2.	851	Dawn Evans, JMU	2007-11
3.	841	Celeste Hill, ODU	1990-94
4.	813	<b>Elena Delle Donne, Delaware</b>	<b>2009-Pres.</b>
5.	771	Tamera Young, JMU	2004-08

**A Run Of Excellence**

During the last 13 seasons, Delaware has produced a run of success most teams in the nation would be hard-pressed to match. Since the start of the 1999-2000 season the Blue Hens have posted 10 20-win seasons (UD won 19 games in 2003-04), and have competed in post-season play nine times.

Delaware competed in the NCAA Tournament in 2001, 2007 and 2012, winning the first NCAA game in men's or women's history over Arkansas Little Rock last spring. The Blue Hens earned Postseason WNIT berths in 2002, 2003, 2005, 2006, 2010, and 2011.

UD won the America East Tournament Championship in 2001 and the CAA Tournament title in 2012. The Blue Hens also advanced to the CAA Tournament Finals three other times, and to the CAA Semifinals in five other years. Delaware has gone 278-126 during the last 13 years, a .688 winning percentage.

**Caracciolo, Martino Transfer To UD**

Sophomore Joy Caracciolo transferred to UD from Boston College, while classmate Candace Martino transferred from Akron. Both players will sit out this season due to NCAA transfer regulations, and will have three years of eligibility remaining beginning in the 2013-14 season.

**Malcom Inducted Into UD Athletics Hall of Fame**

Current UD assistant coach Tiara Malcom was inducted into the University of Delaware Athletics Hall of Fame in a ceremony on Nov. 2.

Malcom led her teams to a four-year record of 89-32, two Colonial Athletic Association regular season titles, and three post-season WNIT appearances during her four-year career.

A three-time all-conference selection, she was named the CAA Player of the Year as a senior in 2005 when she averaged a league-best 15.5 points per game and pulled 6.8 rebounds per contest. She also was selected as the 2005 UD Outstanding Senior Female Athlete of the Year.

Malcom set UD records for career free throws made (535, also a CAA record), games played (121), and double-figure scoring games (88) and ranked No. 4 all-time in scoring (1,545 points), No. 5 in blocked shots (109), and No. 9 in rebounding (794).

**Hens Picked To Win CAA Again**

Delaware was picked to defend its crown in the CAA Preseason Poll announced October 16 at the league's Media Day at Champps-Pentagon Row Restaurant in Arlington, Va.

**CAA Women's Basketball Predicted Order of Finish**

1.	Delaware
2.	James Madison
3.	Hofstra
4.	Drexel
5.	Old Dominion
6.	Northeastern
7.	George Mason
7.	UNCW
7.	Towson
7.	William & Mary

11. Georgia State

**Delle Donne, Carra Earn Preseason CAA Honors**

Elena Delle Donne was named the CAA Preseason Player of the Year again, while Lauren Carra earned second team accolades. Preseason All-Colonial Athletic Association

**First Team**

**Elena Delle Donne, UD (Preseason Player of the Year)**

Shante Evans, Hofstra

Tarik Hislop, James Madison

Deanna Kerkhof, Northeastern

Hollie Mershon, Drexel

**Second Team**

Kirby Burkholder, James Madison

**Lauren Carra, Delaware**

Emily Correal, William & Mary

Amber Easter, George Mason

Nikki Newman, James Madison

**Honorable Mention**

Ashley Betz-White, Old Dominion

Candace Bond, Hofstra

Karneshia Garrett, UNCW

Jewel Tunstull, Northeastern

**The Last Time...**

**UD played an overtime game**

1/2/13 at St. John's (W 60-59)

**UD played double overtime**

1/17/10 vs. Drexel (L 67-70)

**UD scored 100 points**

2/27/81 vs. Temple (W 101-96 OT)

**UD allowed 100 points**

2/13/97 at Maine (L 54-102)

**UD was held under 40 points**

3/12/09 vs. Towson (L 37-40)

**UD held opponent under 40 points**

11/9/12 vs. Sam Houston State (W 63-31)

**UD held opponent under 30 points**

1/10/13 vs. George Mason (W 62-27)

**UD made 5 3-pointers**

12/22/12 at Monmouth (6-15)

**UD allowed 5 3-pointers**

12/29/12 vs. Villanova (6-33)

**An opponent shot 50% from the field**

3/20/12 vs. Kansas (50.0%)

**UD won after trailing at halftime**

12/29/12 vs. Villanova (32-34 -- W 59-45)

**UD lost after leading at halftime**

3/20/12 vs. Kansas (37-31 -- L 64-70)

**A Blue Hen scored 25 points**

1/2/13, Elena Delle Donne (29) at St. John's

**An opponent scored 25 points**

3/20/12, Angel Goodrich (27), Kansas

**A Blue Hen scored 30 points**

12/22/12, Elena Delle Donne (30) at Monmouth

**An opponent scored 30 points**

1/8/12, Taleia Moton (30), George Mason

**A Blue Hen grabbed 10 rebounds**

1/2/13, Elena Delle Donne (16) at St. John's

1/2/13, Danielle Parker (13) at St. John's

**An opponent grabbed 10 rebounds**

1/2/13, Amber Thompson (11), St. John's

**A Blue Hen grabbed 15 rebounds**

1/2/13, Elena Delle Donne (16) at St. John's

**An opponent grabbed 15 rebounds**

12/20/12, Tianna Hawkins (16), #9/8 Maryland

**A Blue Hen had 10 assists**

11/29/99, Christine Koren (10) at Lafayette

**A Blue Hen had a double-double**

1/2/13, Elena Delle Donne (29/16) at St. John's

**An opponent had a double-double**

12/20/12, Tianna Hawkins (16/16), #9/8 Maryland

12/20/12, Alyssa Thomas (13/13), #9/8 Maryland

## Delaware Career Lists

### SCORING

No.	Name	Years	Points
1.	<b>Elena Delle Donne</b> .....	<b>2009-Present</b> .....	<b>2,417</b>
2.	Cindy Johnson .....	1997-2001 .....	1,675
3.	Tyresa Smith .....	2003-2007 .....	1,635
4.	Colleen McNamara .....	1991-1995 .....	1,560
5.	Debbie Eaves .....	1986-1990 .....	1,551
6.	Tiara Malcom .....	2001-2005 .....	1,545
7.	Lori Howard .....	1977-1981 .....	1,469
8.	Danielle Leyfert .....	1997-2001 .....	1,447
9.	Sharon Wisler .....	1986-1990 .....	1,420
10.	Meg McDowell .....	1982-1986 .....	1,236
11.	Shanda Piggott .....	1994-1998 .....	1,223
12.	Lisa Cano .....	1984-1988 .....	1,188
13.	Christina Rible .....	1998-2002 .....	1,181
14.	Jennifer Riley .....	1989-1992 .....	1,165
15.	Megan Dellegrotti .....	1998-2002 .....	1,112
16.	Denise Wojciech .....	1992-1996 .....	1,091
17.	Sharon Howett .....	1974-1978 .....	1,089
18.	Donna Werner .....	1980-1984 .....	1,088
19.	Merel van Zanten .....	1990-1994 .....	1,049
20.	<b>Lauren Carra</b> .....	<b>2009-Present</b> .....	<b>1,046</b>
21.	Allison Trapp .....	2000-2003 .....	1,030
22.	Molly Larkin .....	1989-1993 .....	1,017
23.	Julie Sailer .....	2001-2005 .....	1,001
24.	Cynthia Phipps .....	1980-1984 .....	976
25.	Tesia Harris .....	2007-2010 .....	942
26.	<b>Danielle Parker</b> .....	<b>2008-Present</b> .....	<b>919</b>
27.	Kathie Malloy .....	1980-1984 .....	884

### SCORING AVERAGE

No.	Name	Years	PPG
1.	<b>Elena Delle Donne</b> .....	<b>2009-Present</b> .....	<b>26.6</b>
2.	Lori Howard .....	1977-81 .....	17.7
3.	Sharon Howett .....	1974-78 .....	15.6
4.	Cindy Johnson .....	1997-01 .....	14.8
	Ann Igo .....	1971-74 .....	14.8
6.	Colleen McNamara .....	1991-95 .....	14.1
7.	Danielle Leyfert .....	1997-01 .....	13.5
	Debbie Eaves .....	1986-90 .....	13.5
9.	Tyresa Smith .....	2003-07 .....	13.4
	Jennifer Riley .....	1989-92 .....	13.4

### FIELD GOALS MADE

No.	Name	Years	FG
1.	<b>Elena Delle Donne</b> .....	<b>2009-Present</b> .....	<b>813</b>
2.	Cindy Johnson .....	1997-01 .....	647
3.	Debbie Eaves .....	1986-90 .....	641
4.	Colleen McNamara .....	1991-95 .....	639
5.	Lori Howard .....	1977-81 .....	598
6.	Tyresa Smith .....	2003-07 .....	580
7.	Sharon Wisler .....	1986-90 .....	579
8.	Tiara Malcom .....	2001-05 .....	504
9.	Meg McDowell .....	1982-86 .....	501
10.	Danielle Leyfert .....	1997-01 .....	495

### FIELD GOALS ATTEMPTED

No.	Name	Years	FGA
1.	<b>Elena Delle Donne</b> .....	<b>2009-Present</b> .....	<b>1,710</b>
2.	Cindy Johnson .....	1997-01 .....	1,526
3.	Lori Howard .....	1977-81 .....	1,395
4.	Tyresa Smith .....	2003-07 .....	1,376
5.	Debbie Eaves .....	1986-90 .....	1,365
6.	Colleen McNamara .....	1991-95 .....	1,332
7.	Sharon Wisler .....	1986-90 .....	1,192
8.	Danielle Leyfert .....	1997-01 .....	1,180
9.	Lisa Cano .....	1984-88 .....	1,151
10.	Christina Rible .....	1998-02 .....	1,134

### FIELD GOAL PERCENTAGE (Min. 250 att.)

No.	Name	Years	Pct.
1.	Courtney Irving .....	2004-08 .....	.509
2.	Donna Werner .....	1980-84 .....	.493
3.	Kathie Malloy .....	1980-84 .....	.488
4.	Daphne Joy .....	1986-90 .....	.487
5.	Sharon Wisler .....	1986-90 .....	.486
6.	Colleen McNamara .....	1991-95 .....	.483
7.	Marian Moorer .....	1984-87 .....	.476
8.	<b>Elena Delle Donne</b> .....	<b>2009-Present</b> .....	<b>.475</b>
9.	Sarah Gause .....	1983-86 .....	.473
10.	Tiara Malcom .....	2001-05 .....	.471

### FREE THROWS MADE

No.	Name	Years	FT
1.	<b>Elena Delle Donne</b> .....	<b>2009-Present</b> .....	<b>623</b>
2.	Tiara Malcom .....	2001-05 .....	535
3.	Tyresa Smith .....	2003-07 .....	475
4.	Shanda Piggott .....	1994-98 .....	451
5.	Danielle Leyfert .....	1997-01 .....	442
6.	Megan Dellegrotti .....	1998-02 .....	392
7.	Julie Sailer .....	2001-05 .....	377
8.	Cindy Johnson .....	1997-01 .....	360
9.	Colleen McNamara .....	1991-95 .....	292
10.	Lori Howard .....	1977-81 .....	273

### FREE THROWS ATTEMPTED

No.	Name	Years	FTA
1.	Tyresa Smith .....	2003-07 .....	711
2.	Tiara Malcom .....	2001-05 .....	688
3.	Shanda Piggott .....	1994-98 .....	686
4.	<b>Elena Delle Donne</b> .....	<b>2009-Present</b> .....	<b>685</b>
5.	Danielle Leyfert .....	1997-01 .....	598
6.	Cindy Johnson .....	1997-01 .....	502
7.	Julie Sailer .....	2001-05 .....	476
8.	Megan Dellegrotti .....	1998-02 .....	467
9.	Lori Howard .....	1977-81 .....	459
10.	Colleen McNamara .....	1991-95 .....	423

### FREE THROW PERCENTAGE (Min. 80 Attempts)

No.	Name	Years	Pct.
1.	<b>Elena Delle Donne</b> .....	<b>2009-Present</b> .....	<b>.909</b>
2.	Linda Cyborski .....	1988-92 .....	.852
3.	Megan Dellegrotti .....	1998-02 .....	.839
4.	Courtney Irving .....	2004-08 .....	.831
5.	Chrissy Fisher .....	2005-07 .....	.819
6.	Carolyn Hartsy .....	1983-87 .....	.807
7.	Jennifer Riley .....	1989-92 .....	.795
8.	Julie Sailer .....	2001-05 .....	.792
9.	Tiffany Young .....	2001-05 .....	.784
10.	Alena Koshansky .....	2003-07 .....	.782

### THREE-POINT FIELD GOALS

No.	Name	Years	FG
1.	<b>Elena Delle Donne</b> .....	<b>2009-Present</b> .....	<b>168</b>
2.	Megan Dellegrotti .....	1998-02 .....	154
3.	Alena Koshansky .....	2003-07 .....	145
4.	<b>Lauren Carra</b> .....	<b>2009-Present</b> .....	<b>144</b>
5.	Tesia Harris .....	2007-10 .....	116
6.	Linda Cyborski .....	1988-92 .....	98
7.	Bev Santee .....	1991-95 .....	91
8.	Jen Lipinski .....	1989-93 .....	76
9.	Keisha McFadgion .....	1995-98 .....	74
10.	Liz Hayes .....	2003-05 .....	66

### THREE-POINT FIELD GOAL PERCENTAGE (Min. 50 att.)

No.	Name	Years	Pct.
1.	<b>Elena Delle Donne</b> .....	<b>2009-Present</b> .....	<b>.404</b>
2.	Chrissy Fisher .....	2005-07 .....	.387
3.	Alena Koshansky .....	2003-07 .....	.367
4.	Linda Cyborski .....	1988-92 .....	.364
5.	Jen Lipinski .....	1989-93 .....	.358
6.	Amanda Blackstone .....	2002-06 .....	.349
7.	Liz Hayes .....	2003-05 .....	.340
8.	Megan Dellegrotti .....	1998-02 .....	.336
	Tesia Harris .....	2007-10 .....	.336
10.	<b>Lauren Carra</b> .....	<b>2009-Present</b> .....	<b>.312</b>

### REBOUNDS

No.	Name	Years	Rebounds
1.	Colleen McNamara .....	1991-1995 .....	1,063
2.	Sharon Howett .....	1974-1978 .....	1,009
3.	Debbie Eaves .....	1986-1990 .....	992
4.	Christina Rible .....	1998-2002 .....	975
5.	Sharon Wisler .....	1986-1990 .....	875
6.	Donna Werner .....	1980-1984 .....	873
7.	<b>Danielle Parker</b> .....	<b>2008-Present</b> .....	<b>870</b>
8.	Shanda Piggott .....	1994-1998 .....	862
9.	<b>Elena Delle Donne</b> .....	<b>2009-Present</b> .....	<b>838</b>
10.	Lori Howard .....	1977-1981 .....	801

### REBOUNDING AVERAGE

No.	Name	Years	Avg.
1.	Sharon Howett .....	1974-78 .....	14.4
2.	Mary Wisniewski .....	1972-76 .....	9.8
3.	Lori Howard .....	1977-81 .....	9.7
4.	Colleen McNamara .....	1991-95 .....	9.6
5.	Donna Werner .....	1980-84 .....	9.2
	<b>Elena Delle Donne</b> .....	<b>2009-Present</b> .....	<b>9.2</b>
7.	Christina Rible .....	1998-02 .....	8.9
8.	Debbie Eaves .....	1986-90 .....	8.6
9.	Sue Sowter .....	1974-76 .....	8.5
10.	Paula Petrie .....	1975-77 .....	8.1
	Shanda Piggott .....	1994-98 .....	8.1

### BLOCKED SHOTS

No.	Name	Years	Blocks
1.	<b>Elena Delle Donne</b> .....	<b>2009-Present</b> .....	<b>217</b>
2.	Colleen McNamara .....	1991-95 .....	197
3.	Debbie Eaves .....	1986-90 .....	177
4.	Paula Polyanski .....	1983-86 .....	155
5.	Sarah Gause .....	1983-86 .....	115
6.	Tiara Malcom .....	2001-05 .....	109
7.	Christine Cole .....	1999-03 .....	108
8.	Suzanne Street .....	1997-00 .....	79
9.	Merel van Zanten .....	1990-94 .....	77
10.	Tyresa Smith .....	2003-07 .....	71

### GAMES PLAYED

No.	Name	Years	GP
1.	Jocelyn Bailey .....	2008-12 .....	128
2.	Tyresa Smith .....	2003-07 .....	122
	Alena Koshansky .....	2003-07 .....	122
4.	Tiara Malcom .....	2001-05 .....	121
	<b>Danielle Parker</b> .....	<b>2008-Present</b> .....	<b>121</b>
6.	Vanessa Kabongo .....	2007-12 .....	120
7.	Christine Cole .....	1999-03 .....	119
8.	Eva Riddick .....	2007-11 .....	116
	Jen Lipinski .....	1989-93 .....	116
10.	Debbie Eaves .....	1986-90 .....	115
	Linda Cyborski .....	1988-92 .....	115



# TINA MARTIN

**Head Coach • Lock Haven '86**  
**17<sup>th</sup> Season at Delaware • 319-180**

One of the most successful coaches in University of Delaware athletics history, Tina Martin begins her 17th season at the helm of the Blue Hen women's basketball team in 2012-13.

A native of Williamsport, Pa., Martin was hired May 14, 1996, replacing Joyce Perry who served for 18 years.

In 16 seasons, Martin has transformed the Blue Hens into perennial championship contenders, first in the America East conference, and currently in the Colonial Athletic Association, which Delaware joined beginning with the 2001-02 season.

In those 16 seasons, she has led the teams to a combined record of 309-177 (.636) overall and 186-102 (.646) in regular season league play with the Hens posting nine straight winning seasons through the 2006-07 season. Delaware has recorded 20-win seasons in 10 of the last 13 seasons and made postseason appearances in nine of the last 12 years, including three in the NCAA and six in the Women's National Invitation Tournament.

Last season Martin guided UD to a record-breaking year that saw the Blue Hens finish 31-2, go undefeated in CAA play, and win the first postseason game in school history.

Delaware set a school record for wins in a season including a record 21 consecutive victories, and claimed the first CAA Tournament title in UD history. The Blue Hens earned a No. 3 seed in the NCAA Tournament and posted a 73-42 win over Arkansas Little Rock, the first postseason win by a men's or women's basketball team in school history, and ended the year ranked No. 14 in the ESPN/USA Today Coaches Poll after climbing as high as No. 7 in early March.

Along the way, Martin earned her 300th career victory on Feb. 12 when the Blue Hens defeated Georgia State, 94-56, the most points scored by UD under Martin. For her efforts, she was named the CAA Coach of the Year for the third time.

Martin also was instrumental in the continuing development of Elena Delle Donne, a first team WBCA, John Wooden, Associated Press and USWBA All-American who led the nation in scoring by averaging 28.1 points per game.

On Jan. 6, 2011, Martin became the winningest men's or women's basketball coach at Delaware, earning her 267th career victory with a

61-51 win at Northeastern.

The Hens have placed fourth or better in league play all but four times. Delaware has advanced to the league championship semifinals or better 11 times in the last 13 years, including four appearances in the CAA Championship Game.

After a 6-21 campaign in 1997-98, Martin led the Blue Hens to a 16-11 record in 1998-99 and a 21-8 mark and a trip to the America East semifinals in 1999-2000. The team's 21-8 mark in 1999-00 was the best season for a Blue Hen team since 1989-90.

But it all came together during the 2000-01 season for the Blue Hens. Martin leaded an experienced Delaware squad to the finest season in school history. Delaware put together a record of 26-5, setting school records for wins in a season and consecutive victories (17) and cruising to the America East regular season title with a 17-1 record. The Hens moved through the America East Tournament, defeating Boston University and Hartford in the first two rounds and rallying to down host Vermont in the championship game.

That victory gave Delaware its first ever America East title and the team's first conference championship since 1991 and its first program NCAA Tournament appearance. The Blue Hens advanced to the NCAA East Regionals at North Carolina State and hung tough with the 19th ranked Wolfpack before falling 76-57. The Hens also received their first ever votes in the USA Today Top 25 poll during the season.

Among the other milestones during the season included Martin winning the America East Coach of the Year award for the first time and senior guard Cindy Johnson earning All-America East honors for the third straight year. Martin was instrumental in the development of Johnson, a 5-8 guard who became Delaware's all-time leading scorer and was the first UD player to be invited to the Women's National Basketball Association (WNBA) Draft Camp in 2002.

Delaware made it two straight post-season appearances in 2001-02. As first year members of the Colonial Athletic Association, Martin helped guide the Blue Hens to a 23-7 record and their first ever Women's National Invitational Tournament berth.

The 2004-05 team produced one of the finest seasons in school history as Martin led the squad to a 25-6 mark and a 16-2 league

mark. The Blue Hens claimed the CAA regular season title and tied the school record for consecutive wins in a season with 17. The Blue Hens ended Old Dominion's 122-game home CAA win streak with their victory in Norfolk in January and then became the first CAA team since the 1992-93 Richmond Spiders to sweep Old Dominion in the regular season before a school record crowd at home. The squad received votes in the USA Today Top 25 Poll over the second half of the season.

The Hens moved through the CAA Tournament before falling to Old Dominion in the CAA Championship game in overtime, 78-74. The Hens did make it back to the post-season though, as Delaware hosted St. John's in the first round of the WNIT Tournament. Delaware making its third WNIT appearance in the last four years fell to the Red Storm by a score of 48-42. Martin was selected as the CAA Co-Coach of the Year honors, sharing the title with Drexel's Denise Dillion.

The winning ways continued in 2005-06 as the Blue Hens posted a record of 22-8, placed third in the CAA regular season standings, and advanced to the CAA Tournament semifinals. Delaware still earned its fifth post-season berth in six seasons, advancing to the WNIT for the fourth time before falling to Pittsburgh by a score of 64-57.

During the 2006-07 season, Delaware tied the school record with 26 wins and tied the school record for conference wins with 16. The Blue Hens also received votes in the Associated Press Top 25 media poll for the first time in school history. The Hens garnered the school's first ever at-large bid into the NCAA Tournament.

UD fell to Michigan State on the Spartans' home floor 69-58. Smith, who led the team in scoring and was 17th in the nation with 19.8 points per game, was named first team All-CAA and the league's Defensive Player of the Year for the second straight year. Smith became the first Delaware player to be drafted into the WNBA when the Phoenix Mercury selected her with the 18th overall pick.

In 2009-10, the Blue Hens returned to dominance with a solid 21-12 season highlighted by CAA semifinal and a first round WNIT appearances.

After an outstanding season in 2009-10, the Hens went through an up-and-down season. Delaware rebounded however and advanced to the CAA Tournament finals. The Hens earned yet another WNIT appearance with a first round game at Toledo.

As an assistant coach, Martin played a big part in rebuilding a Seton Hall University program that went from three straight losing seasons to one that made back-to-back NCAA Tournament appearances in 1994 and 1995 under head coach Phyllis Mangina. The 1993-94 team went 27-5 and advanced to the NCAA Sweet 16, the best season in Seton Hall history.

Martin was a two-time NCAA Division II All-American at Lock Haven (Pa.) University and was a four time Pennsylvania State Athletic Conference All-Star and two time league Player of the Year. She finished as the PSAC's all-time leading scorer with 2,157 points and had her number (33) retired at Lock Haven.

## Tina Martin Year By Year Head Coaching Record

Year	Record	Conference Record (Finish)	Team Notes
1996-97	9-19	6-12 (7th), America East	Martin's First Win, 72-66 vs. Delaware State, Nov. 22, 1996
1997-98	6-21	3-15 (10th), America East	
1998-99	16-11	10-8 (5th), America East	First Winning Season; America East Quarterfinals
1999-00	21-8	13-5 (3rd), America East	First 20 Win Season; America East Semifinals
2000-01	26-5	17-1 (1st), America East	America East Champions; America East Coach of the Year; NCAA Tournament
2001-02	23-7	15-3 (2nd), Colonial Athletic Association	CAA Semifinals; WNIT Tournament
2002-03	22-9	15-3 (tie, 1st), Colonial Athletic Association	WNIT Tournament; CAA Tournament Finals; CAA Regular Season Co-Champions
2003-04	19-10	10-8 (4th), Colonial Athletic Association	CAA Tournament Semifinals
2004-05	25-6	16-2 (1st), Colonial Athletic Association	WNIT Tournament; CAA Tournament Finals; CAA Regular Season Champions; CAA Co-Coach of the Year
2005-06	22-8	13-5 (3rd), Colonial Athletic Association	WNIT Tournament; CAA Tournament Semifinals
2006-07	26-6	16-2 (3rd), Colonial Athletic Association	NCAA Tournament; CAA Tournament Semifinals
2007-08	7-24	6-12 (9th), Colonial Athletic Association	
2008-09	15-15	7-11 (9th), Colonial Athletic Association	
2009-10	21-12	11-7 (5th), Colonial Athletic Association	WNIT Tournament; CAA Tournament Semifinals
2010-11	20-14	10-8 (t-5th), Colonial Athletic Association	WNIT Tournament; CAA Tournament Runner-Up; Won Record 267th Career Game at Northeast, Jan. 6, 2011
2011-12	31-2	18-0 (1st), Colonial Athletic Association	CAA Regular Season Champions; CAA Tournament Champions; NCAA Tournament Second Round; CAA Coach of the Year
2012-13	10-3	1-0	
<b>Totals</b>	<b>319-180 (.639)</b>	<b>187-102 (.647)</b>	





**2012-13 University of Delaware Women's Basketball Team: Front Row (left-right):** Jade Clark, Akeema Richards, Lauren Carra, Trumae Lucas, Kayla Miller, Jaquetta May, Jodi Salyer, Alecia Bell, Courtni Green. **Back Row:** Head Coach Tina Martin, Associate Head Coach Jeanine Radice, Assistant Coach Tom Lochner, Candace Martino, Strength & Conditioning Assistant Coach Trevor Williams, Manager Peter Stevens, Chelsea Craig, Kelsey Buchanan, Elena Delle Donne, Danielle Parker, Stephanie Leon, Joy Caracciolo, Assistant Coach Tiara Malcom, Director of Basketball Operations Allie Fedorowicz, Manager Clayton Meeks, Assistant Athletic Trainer Kelly Stafford, Senior Student Athletic Trainer Deanna Lapp.

### 2012-13 University of Delaware Women's Basketball Roster

No.	Name	Yr.	Pos.	Ht.	Hometown/High School (Previous School)
1	Candace Martino <sup>^</sup>	So.r	G	5-7	Pittsburgh, Pa./Bethel Park (Akron)
2	Courtni Green	Fr.	G	5-7	Winchester, Va./Millbrook
3	Jaquetta May ***	Sr.	G	5-9	Wilmington, Del./Delcastle
4	Jodi Salyer	Fr.	G	5-10	Roanoke, Va./Staunton River
10	Kayla Miller **	Sr.	G	5-8	Wilmington, Del./Ursuline Academy (George Washington)
11	Elena Delle Donne ***	Sr.	F/G	6-5	Wilmington, Del./Ursuline Academy
12	Danielle Parker ***	Sr.	F	6-2	Phoenix, Md./Dulaney
13	Kelsey Buchanan **	Jr.	C	6-3	South Riding, Va./Freedom
14	Alecia Bell	Fr.	G/F	6-0	Newport News, Va./Woodside
15	Akeema Richards *	Jr.	G	5-7	Baltimore, Md./Western (West Virginia)
21	Trumae Lucas *	Sr.	G	5-8	Greensboro, N.C./Grimsley (Florida)
22	Lauren Carra ***	Sr.	G	5-9	Dunmore, Pa./Dunmore
23	Jade Clark	Fr.	G/F	6-0	Ashburn, Va./St. John's College HS (D.C.)
24	Joy Caracciolo #	So.r	F	6-1	Manassas, Va./Stonewall Jackson (Boston College)
33	Stephanie Leon	So.	C	6-4	Northport, N.Y./Northport
45	Chelsea Craig **	Jr.	F	6-2	Rockville, Md./Wootton

<sup>^</sup> Walk-on who will sit out 2012-13 season due to NCAA transfer rules

# Will sit out 2012-13 season due to NCAA transfer rules

**Head Coach:** Tina Martin (Lock Haven '86) 17th season at Delaware (309-177 overall/Delaware)

**Associate Head Coach:** Jeanine Radice (Fordham '89)

**Assistant Coach:** Tom Lochner (Temple '89)

**Assistant Coach:** Tiara Malcom (Delaware '05)

**Director of Basketball Operations:** Allie Fedorowicz (Cornell '10)

**Captains:** Chelsea Craig, Elena Delle Donne

#### PRONUNCIATION GUIDE

Jaquetta May — juh-KWETT-ah

Jodi Salyer — SAL-yer

Elena Delle Donne — Dell-uh-Don

Alecia Bell — uh-LEESH-uh

Akeema Richards — uh-KEEM-uh

Trumae Lucas — True-MAY

Lauren Carra — kuh-RAH

Joy Caracciolo — Car-ACH-ee-olo

Stephanie Leon — Lee-OWN

Jeanine Radice — ruh-DEESE

Allie Fedorowicz — Fedora-witz



# CANDACE MARTINO



**Sophomore (R) • Guard • 5-7**  
**Pittsburgh, Pa. • Bethel Park**

---

**2012-13 Season:** Will sit out this season per NCAA transfer regulations after transferring to Delaware from Akron over the summer • will have three years of eligibility remaining, beginning in 2013-14.

**At Akron: 2011-12 Season:** Did not appear in any games for the Zips.

**High School:** Named first team All-State during her final three years • earned All-Section honors as a junior and senior • four-year All-Conference pick • selected to Tribune Review Terrific Ten as a senior • three-time Pittsburgh Post-Gazette Player To Watch • named The Almanac Rookie of the Year as a freshman • selected to two all-tournament teams • finished career with 1,400 points • averaged double figures during all four seasons • honor roll student • member of Student Government Association.





# COURTNI GREEN



**Freshman • Guard • 5-7**  
**Winchester, Va. • Millbrook**

**2012-13 Season:** Continues to be a threat from 3-point land • delivered a career game in 62-27 win in conference opener against George Mason (1/10) with eight points, two field goals, seven field goal attempts, two three-pointers, six three-point attempts, two free throws, four rebounds and one steal in 19 minutes of action • swatted a career-high two blocks in the team's 82-53 win at Monmouth (12/20) • collected a career-high five points with two free throws in addition to swatting the first block of her career against Princeton (12/9) • also tied a career-best in field goals (1), 3-pointers (1), free throw attempts (2) and steals (1) against the Tigers • scored four points and grabbed four rebounds during 18 minutes of action against Sam Houston State (11/9) in her Blue Hen debut • went a perfect 1-for-1 from 3-point land against Providence (11/20) and St. Bonaventure (11/28).

**High School:** Three-time All-State selection and Virginia AA State Player of the Year • four-time Northwestern District Player of the Year honoree • three-time Group AA and Region II Player of the Year • four-time Winchester Star and Northern Virginia Daily Player of the Year • averaged 25.8 points per game as a junior • scored 29.5 points as a senior, ninth most in Virginia High School League history, while her 886 points were fourth most • ranked sixth in the area with 8.6 rebounds, second with 4.0 assists, first with 6.8 steals, and third with 1.9 blocks • also was second in the area with a 57.0 shooting percentage and tied for first with a 44.0 three-point percentage • led Millbrook High School to three consecutive state championships and a record 80 consecutive victories • had her number retired • ranks third all-time in VHSL history with 2,626 career points and first with 631 career steals • four-year honor roll student.

### 2012-13 Game-by-Game

Date	Opponent	FG-A	3FG-A	FT-A	O-D-R	PF	A	T	B	S	Pts.	Min.
11/9	Sam Houston State	1-5	1-5	1-2	0-4-4	3	0	0	0	0	4	18
11/11	Georgetown	0-2	0-2	0-0	0-0-0	0	0	3	0	1	0	6
11/14	at Duquesne	0-1	0-1	0-0	0-0-0	0	0	0	0	0	0	3
11/20	Providence	1-1	1-1	0-0	0-0-0	1	0	1	0	1	3	7
11/28	Saint Bonaventure	1-1	1-1	0-0	0-0-0	0	0	0	0	0	3	4
12/5	at Rhode Island	0-0	0-0	0-0	0-0-0	0	0	0	0	0	0	1
12/9	Princeton	1-3	1-3	2-2	1-2-3	0	0	0	1	0	5	10
12/20	Maryland				DNP - CD							
12/23	at Monmouth	1-4	1-3	0-0	0-0-0	0	0	1	2	1	3	15
12/29	vs. Villanova	0-0	0-0	0-0	0-0-0	0	0	0	0	0	0	1
12/30	vs. Duquesne				DNP - CD							
1/2	at St. John's				DNP - CD							
1/10	George Mason	2-7	2-6	2-2	1-3-4	2	0	0	0	1	8	19
1/13	at Old Dominion											
1/15	at Northeastern											
1/20	Towson											
1/24	UNCW											
1/27	at Drexel											
1/29	Northeastern											
1/31	at Georgia State											
2/3	Hofstra											
2/7	at Towson											
2/10	at James Madison											
2/14	Old Dominion											
2/17	at William & Mary											
2/19	at George Mason											
2/24	James Madison											
2/28	at Hofstra											
3/3	Drexel											
3/6	Georgia State											

### Season/Career Highs

	2012-13	Career
Points	8 vs. George Mason, 1/10	same
Field Goals	2 vs. George Mason, 1/10	same
Field Goal Att.	7 vs. George Mason, 1/10	same
3-pt. Field Goals	2 vs. George Mason, 1/10	same
3-pt. Field Goal Att.	6 vs. George Mason, 1/10	same
Free Throws	2, 2x vs. George Mason, 1/10	same
Free Throw Att.	2, 3x vs. Princeton, 12/9	same
Rebounds	4, 2x vs. George Mason, 1/10	same
Assists	n/a	same
Blocks	2 vs. vs. Monmouth, 12/22	same
Steals	1, 4x vs. George Mason, 1/10	same
Minutes	19 vs. George Mason, 1/10	same

### Courtnei Green at Delaware

Year	GP/GS	Min.	Avg.	FG-FGA	FG%	3FG-3FGA	3FG%	FT-FTA	FT%	OR	DR	Tot	Avg.	PF	FO	A	TO	B	S	Pts	Avg.
2012-13	10/0	84	8.4	7-24	.292	7-21	.333	5-6	.833	2	9	11	1.1	6	0	0	5	3	4	26	2.6
<b>Totals</b>	<b>10/0</b>	<b>84</b>	<b>8.4</b>	<b>7-24</b>	<b>.292</b>	<b>7-21</b>	<b>.333</b>	<b>5-6</b>	<b>.833</b>	<b>2</b>	<b>9</b>	<b>11</b>	<b>1.1</b>	<b>6</b>	<b>0</b>	<b>0</b>	<b>5</b>	<b>3</b>	<b>4</b>	<b>26</b>	<b>2.6</b>



# JAQUETTA MAY



**Senior • Guard • 5-9**  
**Wilmington, Del. • Delcastle**

**2012-13 Season:** National 5 & 10 Best of the Blue Hens Athlete of the Week (Dec. 10) • neared a double double for the second consecutive game with nine points and nine rebounds in the Hens' overtime 60-59 victory at St. John's (1/2); fouled out of a game for the first time in her career against the Red Storm • marked a season-best three assists and neared a double double with nine points and nine rebounds against Duquesne (12/30) at the Dartmouth Blue Sky Classic • posted a career-high six free throws against Villanova (12/29) at the Dartmouth Blue Sky Classic with 10 points and eight rebounds in addition to a season-high three steals • dished out a season-high two assists in addition to tying a season-high with two steals in Delaware's 82-53 win at Monmouth (12/22) • collected 300th career point following a season-high 15 point performance against Princeton (12/9) • made a season-best six field goals on a career-high 11 attempts against the Tigers • Tied a career-high with 3 blocks and marked a season-high 13 rebounds while collecting her 100th career offensive rebound at Rhode Island (12/5) • collected her 200th rebound for the Blue Hens with a five-rebound game vs. Georgetown (11/11) • recorded her first career double-double with 13 points and a career-high 11 rebounds during the Blue Hens' season-opening win over Sam Houston State (11/9) • went 4 of 9 from the field and made two steals against the Bearkats • scored 12 points on a season-high five field goals with two blocks and one assist in a season-high 32 minutes of play against St. Bonaventure (11/28) • tallied 100th career field goal and 250th career field goal attempt against the Bonnies (11/28).

**2011-12 Season:** Appeared in 19 games for the Blue Hens, averaging 6.7 minutes per contest • averaged 1.3 points and 1.3 rebounds on the campaign • grabbed four rebounds and scored two points in the season-opening win over Rhode Island (11/11) • pulled down five boards, scored four points, and added a steal during the win against William & Mary (12/4) • posted four points, three rebounds, three assists, and two blocks during the victory over Yale (12/5) • made a season-high three steals during the win at Georgia State (2/12) • scored two points to go with a rebound, assist, and block in the win at William & Mary (2/29) • scored a season-best six points while adding four rebounds, two blocks, and an assist during the CAA Tournament Semifinal victory over UNCW (3/10).

**2010-11 Season:** Appeared in all but two games for the Blue Hens while making one start versus Princeton (12/1) • averaged 4.5 points and 3.1 rebounds on the year • ranked fourth on the team with 28 assists and fifth with 33 steals • posted career-highs of 16 points and three blocks versus Alcorn State at the Hilton Garden Inn Hokie Classic at Virginia Tech (12/30) • named National 5&10 Best of the Blue Hens Athlete of the Week (Dec. 27) • scored 14 points against Saint Joseph's, connecting on a career-high seven field goals (12/22) • other double figure scoring game came at Drexel (1/9), when she scored 10 points while playing a career-high 33 minutes • added nine points against Yale (11/20) and twice versus Old Dominion (1/16 and 3/11) • collected a season-high seven rebounds against UMBC (11/12) and Alcorn State.

**2009-10 Season:** Saw action in 22 of the Blue Hens' contests including each of the final 17 games of the season • started the Hens' season finale game when UD hosted Richmond (3/18) in the first round of the WNIT • contributed 82 points and 62 boards to average 3.7 points and 2.8 rebounds per game • made 21 steals on the season, dished out 19 assists and made eight blocks • scored a season-high 12 points in a standout game at VCU (1/21) • notched her second double-digit game against the Spiders with 10, and tallied nine against George Mason (2/8) • shared the UD Most Improved Player Award with Danielle Parker.

**High School:** First team All-State selection in 2009 after earning second team honors in 2008 and third team honors in 2007 • led Delcastle Technical High School to the 2009 state championship • averaged 17.5 points, 4.2 assists, 3.0 steals and 2.1 blocks per game as a senior • won National AAU Division II Championships in 2006-07 and 2007-08.

## 2012-13 Game-by-Game

Date	Opponent	FG-A	3FG-A	FT-A	O-D-R	PF	A	T	B	S	Pts.	Min.
11/9	Sam Houston State	4-9	0-0	5-7	7-4-11	2	0	2	0	2	13	24
11/11	Georgetown	0-2	0-0	0-2	4-1-5	4	0	4	2	0	0	29
11/14	at Duquesne	0-1	0-0	0-0	3-1-4	0	0	1	0	1	0	17
11/20	Providence	0-0	0-0	0-2	1-0-1	2	0	1	0	0	0	14
11/28	Saint Bonaventure	5-8	0-0	2-2	3-1-4	3	1	0	2	1	12	32
12/5	at Rhode Island	5-9	0-0	0-1	5-8-13	2	1	2	3	0	10	30
12/9	Princeton	6-11	0-0	3-6	2-3-5	3	0	0	0	0	15	25
12/20	Maryland	0-0	0-0	0-0	1-0-1	1	0	2	0	0	0	8
12/23	at Monmouth	1-1	0-0	1-1	2-1-3	0	2	1	0	2	3	24
12/29	vs. Villanova	2-4	0-0	6-7	4-4-8	2	0	0	1	3	10	26
12/30	vs. Duquesne	3-10	0-0	3-4	4-5-9	1	3	0	0	1	9	29
1/2	at St. John's	4-8	0-0	1-2	4-5-9	5	0	2	2	1	9	31
1/10	George Mason	2-3	0-0	5-6	3-4-7	0	1	1	0	0	9	19
1/13	at Old Dominion											
1/15	at Northeastern											
1/20	Towson											
1/24	UNCW											
1/27	at Drexel											
1/29	Northeastern											
1/31	at Georgia State											
2/3	Hofstra											
2/7	at Towson											
2/10	at James Madison											
2/14	Old Dominion											
2/17	at William & Mary											
2/19	at George Mason											
2/24	James Madison											
2/28	at Hofstra											
3/3	Drexel											
3/6	Georgia State											

## Season/Career Highs

	2012-13	Career
Points	15 vs. Princeton, 12/9	16 vs. Alcorn State, 12/30/10
Field Goals	6 vs. Princeton, 12/9	7 vs. Saint Joseph's, 12/22/10
Field Goal Att.	11 vs. Princeton, 12/9	11 vs. Princeton, 12/9/12
3-pt. Field Goals	n/a	n/a
3-pt. Field Goal Att.	n/a	1 at Drexel, 1/9/11
Free Throws	6 vs. Villanova, 12/29	6 vs. Villanova, 12/29/12
Free Throw Att.	7 vs. Sam Houston State, 11/9	7, three times
Rebounds	11 vs. Sam Houston State, 11/9	11 vs. Sam Houston State, 11/9/12
Assists	3 vs. Duquesne, 12/30	4 vs. George Mason, 2/7/10
Blocks	3 at Rhode Island, 12/5	3, twice
Steals	3 vs. Villanova, 12/29	4 vs. Saint Joseph's, 12/22/10
Minutes	32 vs. St. Bonaventure, 11/28	33 at Drexel, 1/9/11

## Jaquetta May at Delaware

Year	GP/GS	Min.	Avg.	FG-FGA	FG%	3FG-3FGA	3FG%	FT-FTA	FT%	OR	DR	Tot	Avg.	PF	FO	A	TO	B	S	Pts	Avg.
2009-10	22/1	298	13.5	31-69	.449	0-0	---	20-34	.588	33	29	62	2.8	27	0	19	38	8	21	82	3.7
2010-11	32/1	464	14.5	53-131	.405	0-1	.000	39-59	.661	38	60	98	3.1	42	0	28	58	15	33	145	4.5
2011-12	19/0	128	6.7	11-30	.367	0-0	---	3-7	.429	10	14	24	1.3	5	0	12	11	5	4	25	1.3
2012-13	13/4	308	23.7	32-66	.485	0-0	---	26-40	.650	39	31	70	5.4	25	1	8	16	10	11	90	6.9
<b>Totals</b>	<b>86/6</b>	<b>1198</b>	<b>13.9</b>	<b>127-296</b>	<b>.429</b>	<b>0-1</b>	<b>.000</b>	<b>88-140</b>	<b>.629</b>	<b>120</b>	<b>134</b>	<b>254</b>	<b>3.0</b>	<b>99</b>	<b>1</b>	<b>67</b>	<b>123</b>	<b>38</b>	<b>69</b>	<b>342</b>	<b>4.0</b>



# JODI SALYER



**Freshman • Guard • 5-10**  
**Roanoke, Va. • Staunton River**

**2012-13 Season:** Has not seen time yet this season for the Blue Hens • expected to redshirt season.

**High School:** 2012 ABC 13 Full Court Press and WSET Player of the Year • first team All-Blue Ridge District selection during her final three years • second team All-State pick as a senior • named first team All-Region as a junior and senior • earned first team All-Timesland in senior year • News & Advance first team All-Area selection as a junior • averaged 12 points, four rebounds, four assists and three steals per game as a senior • scored 1,027 career points, third most in Staunton River history • led Staunton River to two regular district championships and three district tournament titles • also played three years of soccer at Staunton River.

### 2012-13 Game-by-Game

Date	Opponent	FG-A	3FG-A	FT-A	O-D-R	PF	A	T	B	S	Pts.	Min.
11/9	Sam Houston State				DNP - CD							
11/11	Georgetown				DNP - CD							
11/14	at Duquesne				DNP - CD							
11/20	Providence				DNP - CD							
11/28	Saint Bonaventure				DNP - CD							
12/5	at Rhode Island				DNP - CD							
12/9	Princeton				DNP - CD							
12/20	Maryland				DNP - CD							
12/23	at Monmouth				DNP - CD							
12/29	vs. Villanova				DNP - CD							
12/30	vs. Duquesne				DNP - CD							
1/2	at St. John's				DNP - CD							
1/10	George Mason				DNP - CD							
1/13	at Old Dominion											
1/15	at Northeastern											
1/20	Towson											
1/24	UNCW											
1/27	at Drexel											
1/29	Northeastern											
1/31	at Georgia State											
2/3	Hofstra											
2/7	at Towson											
2/10	at James Madison											
2/14	Old Dominion											
2/17	at William & Mary											
2/19	at George Mason											
2/24	James Madison											
2/28	at Hofstra											
3/3	Drexel											
3/6	Georgia State											

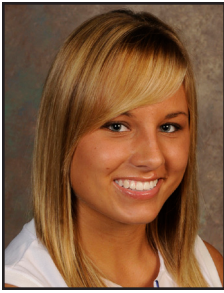
### Season/Career Highs

	2012-13	Career
Points	n/a	same
Field Goals	n/a	same
Field Goal Att.	n/a	same
3-pt. Field Goals	n/a	same
3-pt. Field Goal Att.	n/a	same
Free Throws	n/a	same
Free Throw Att.	n/a	same
Rebounds	n/a	same
Assists	n/a	same
Blocks	n/a	same
Steals	n/a	same
Minutes	n/a	same

### Jodi Salyer at Delaware

Year	GP/GS	Min.	Avg.	FG-FGA	FG%	3FG-3FGA	3FG%	FT-FTA	FT%	OR	DR	Tot	Avg.	PF	FO	A	TO	B	S	Pts	Avg.	
2012-13																						
<b>Totals</b>																						





# KAYLA MILLER



Senior • Guard • 5-8

Wilmington, Del. • Ursuline Academy • George Washington

**2012-13 Season:** Tallied 100th career rebound in a Blue Hen uniform vs. George Mason (1/10) • collected a career-high five steals in a season-high 36 minutes of play against Princeton (12/9) • made first start of year and first since the 2009-10 season at Rhode Island (12/5) and contributed five points, four assists and two rebounds in 32 minutes of play • tied career-high with two three-point field goals in five attempts; resulted in seven points and a season-high four assists in season-high 31 minutes off the bench vs. Georgetown (11/11) • scored two points, grabbed three rebounds and handed out an assist during the season-opening victory over Sam Houston State (11/9) • went a perfect 2-for-2 in field goals for four points in addition to four assists against Providence (11/20) • saw a season-high 33 minutes of play against St. Bonaventure (11/28) • posted a career-high six free throws on nine attempts against the Bonnies (11/28) • tied season-high with two field goals and four rebounds against No. 9/8 Maryland (12/20).

**2011-12 Season:** Appeared in all but one game for the Blue Hens • ranked third on the squad with 73 assists and sixth with 19 steals • contributed 28 points and 43 rebounds on the year • dished out a season-best six assists, grabbed five rebounds, and made two steals during the season-opening win over Rhode Island (11/11) • handed out five assists in the win at Villanova (11/22) • pulled down three boards and added two assists during the win at Saint Bonaventure (11/27) • led the team with four steals while adding four assists, two rebounds, and two points during the win over William & Mary (12/4) • scored a season-high four points during the victory over Yale (12/5) • recorded five assists during the win vs. UNCW (1/12) • notched three points and four assists in the win at Northeastern (1/15) • tied her season-high with four points to go with two assists and two boards during the CAA Tournament Quarterfinal win over Old Dominion (3/9) • led the Blue Hens with four assists during the CAA Semifinal triumph over UNCW (3/10) • dished out three assists during both NCAA Tournament games • named Colonial Athletic Association Honorable Mention All-Academic.

**2010-11 Season:** Sat out the season as a redshirt after having back surgery to repair a herniated disk • earned honorable mention Colonial Athletic Association All-Academic honors.

**2009-10 Season:** Served as a co-captain with Eva Riddick • saw action in 24 games • made 20 starts after sitting out the first nine games of the season due to NCAA transfer regulations • contributed 85 points and 43 rebounds for the Blue Hens • averaged 3.5 points and 1.8 boards per game • dished out a team-high 74 assists, made 27 steals and blocked one shot on the season • tallied a season-high 10 points against George Mason (2/8) • added nine against Drexel (1/17) and Buffalo (12/22) • drained a pair of three-pointers against George Mason (3/11) and Massachusetts (12/30) • pulled down a season-high six rebounds against Old Dominion (3/13) in the semifinals of the Colonial Athletic Association Tournament • dealt a team season-high seven assists against Towson (1/28) • played a season-high 40 minutes versus Old Dominion and twice against Drexel (3/12 and 1/17) • named to the CAA All-Academic second team • selected as Delaware's nominee for the CAA Dean Ehlers Leadership Award • presented the Joyce Perry Memorial Coaches' Award at the annual women's basketball banquet.

**At George Washington: 2008-09 Season:** Transferred to Delaware from George Washington following the fall 2008 semester • appeared in seven games for the Colonials, averaging 1.3 points and 0.9 rebounds in six minutes per contest • scored nine points on 3 of 4 shooting from the field and 2 of 2 shooting from the free throw line while adding two assists in 17 minutes against Coppin State.

**High School:** Three-time All-State selection who led Ursuline Academy to the 2005, 2006 and 2008 state championships • averaged 14.0 points, 6.0 assists, 3.0 rebounds and 2.0 steals per game to earn first team All-State honors as a senior in 2008 • 2006 honorable mention All-State and 2007 third team All-State selection • four-time all-conference selection who earned first team honors as a junior and senior • member of Spirit Club.

## 2012-13 Game-by-Game

Date	Opponent	FG-A	3FG-A	FT-A	O-D-R	PF	A	T	B	S	Pts.	Min.
11/9	Sam Houston State	1-3	0-1	0-0	0-3-3	0	1	0	0	0	2	26
11/11	Georgetown	2-6	2-5	1-2	0-0-0	0	4	6	0	1	7	31
11/14	at Duquesne	1-2	0-1	0-0	0-0-0	2	3	3	0	0	2	22
11/20	Providence	2-2	0-0	0-0	0-2-2	1	4	1	0	0	4	18
11/28	Saint Bonaventure	0-1	0-0	6-9	0-1-1	2	2	0	0	0	6	33
12/5	at Rhode Island	1-3	0-1	3-4	0-2-2	3	4	1	0	0	5	32
12/9	Princeton	1-3	0-1	0-0	0-0-0	0	3	1	0	5	2	36
12/20	Maryland	2-3	0-0	1-2	0-4-4	0	2	2	0	1	5	32
12/23	at Monmouth	1-5	0-2	2-2	0-0-0	2	4	1	0	1	4	24
12/29	vs. Villanova	0-5	0-3	0-0	0-1-1	1	2	1	0	1	0	35
12/30	vs. Duquesne	1-3	0-1	2-2	0-0-0	3	3	2	0	4	4	28
1/2	at St. John's	2-4	0-0	0-0	0-0-0	3	1	3	0	0	4	34
1/10	George Mason	1-2	0-1	0-0	0-1-1	0	2	0	0	2	2	24
1/13	at Old Dominion											
1/15	at Northeastern											
1/20	Towson											
1/24	UNCW											
1/27	at Drexel											
1/29	Northeastern											
1/31	at Georgia State											
2/3	Hofstra											
2/7	at Towson											
2/10	at James Madison											
2/14	Old Dominion											
2/17	at William & Mary											
2/19	at George Mason											
2/24	James Madison											
2/28	at Hofstra											
3/3	Drexel											
3/6	Georgia State											

## Season/Career Highs

	2012-13	Career
Points	7 vs. Georgetown, 11/11	10 vs. George Mason, 2/7/10
Field Goals	2, 4x at St. John's, 1/2	3, twice
Field Goal Att.	6 vs. Georgetown, 11/11	7 vs. Buffalo, 12/22/09
3-pt. Field Goals	2 vs. Georgetown, 11/11	2, 2x, vs. Georgetown, 11/11
3-pt. Field Goal Att.	5 vs. Georgetown, 11/11	6 vs. Massachusetts, 12/30/09
Free Throws	6 vs. St. Bonaventure, 11/28	6 vs. St. Bonaventure, 11/28
Free Throw Att.	9 vs. St. Bonaventure, 11/28	9 vs. St. Bonaventure, 11/28
Rebounds	4, 2x vs. Maryland, 12/20	6 vs. Old Dominion, 3/3/10
Assists	4, 4x at Monmouth, 12/22	7 vs. Towson, 1/28/10
Blocks	n/a	1, twice
Steals	5 vs. Princeton, 12/9	5 vs. Princeton, 12/9/12
Minutes	36 vs. Princeton, 12/9	40 vs. Drexel, 1/17/10

## Kayla Miller at Delaware

Year	GP/GS	Min.	Avg.	FG-FGA	FG%	3FG-3FGA	3FG%	FT-FTA	FT%	OR	DR	Tot	Avg.	PF	FO	A	TO	B	S	Pts	Avg.
2009-10	24/20	730	30.4	25-95	.263	11-44	.250	24-44	.545	5	38	43	1.8	44	0	74	51	1	27	85	3.5
2010-11										Injured -- DNP											
2011-12	32/0	523	16.3	9-33	.273	0-1	.000	10-14	.714	2	41	43	1.3	43	0	73	32	1	19	28	0.9
2012-13	13/8	375	28.8	15-42	.357	2-16	.125	15-21	.714	0	14	14	1.1	19	0	35	21	0	15	47	3.6
<b>Totals</b>	<b>69/28</b>	<b>1628</b>	<b>23.6</b>	<b>49-170</b>	<b>.288</b>	<b>13-61</b>	<b>.213</b>	<b>49-79</b>	<b>.620</b>	<b>7</b>	<b>93</b>	<b>100</b>	<b>1.4</b>	<b>106</b>	<b>0</b>	<b>182</b>	<b>104</b>	<b>2</b>	<b>61</b>	<b>160</b>	<b>2.3</b>



# ELENA DELLE DONNE



**Senior • Guard/Forward • 6-5**  
**Wilmington, Del. • Ursuline Academy**

**2012-13 Season:** Named to Preseason Wade National Player of the Year Trophy Watch List • highlighted on the preseason Naismith Women's College Player of the Year Watch List • Preseason CAA Player of the Year • unanimous Associated Press Preseason All-American • senior CLASS finalist • school's career leader with 2,417 points, 26.6 points per game, 813 field goals made, 1,710 field goal attempts, 168 three-pointers made, a 40.4 three-point field goal percentage, 623 free throws made, a 90.9 free throw percentage, and 217 blocks • fourth with 685 free throw attempts and ninth with 838 rebounds • ranks third in CAA history in points, second in free throws made, third in blocks and fourth in field goals made • has recorded the top six scoring games and 12 of the top 13 in school history • has posted 76 20-point games and 30 30-point games • 39 career double doubles • serving as team co-captain for second consecutive year along with Chelsea Craig • CAA Player of the Week for Dec. 31 • did not play in first three games of the season; win over Sam Houston State (11/9), losses to Georgetown (11/11) and Duquesne (11/14) after dealing with symptoms of Lyme Disease • scored a game-high 22 points on 9-of-20 shooting from the field (1-for-4 3pt) and 3-of-4 from the charity stripe in addition to grabbing eight boards, two assists and one block in 27 minutes of play in first game against Providence (11/20) • started second game of season against No. 9/8 Maryland (12/20) after missing the previous three games with symptoms of Lyme Disease • saw a game-high 19 points in addition to six rebounds and two blocks in a season-high 34 minutes of action against the Terps • jumped to fourth place in CAA history with 775 field goals made after recording seven against Maryland • moved to fourth place in CAA history with 209 blocks after swatting two at Monmouth (12/22) • led team to 82-53 win over the Hawks with season-highs in points (30), field goals (10), 3-pt field goals (4), 3-pt field goal attempts (5), free throws/attempted (6-6), rebounds (9), assists (2) and blocks (2) • collected back-to-back double doubles with 17 points and 12 rebounds in a win over Villanova (12/29) and 23 points and season-high 13 rebounds in a win over Duquesne (12/30) en route to the Dartmouth Blue Sky Classic title; also earned Tournament MVP honors • tallied 100th career steal, 600th career free throw and 800th career rebound against Villanova • went a season-high 7-for-7 from the charity stripe in addition to swatting a season-high four blocks against Duquesne (12/30) • played the hero role once again for UD as she banked in a jumper with 0.7 seconds remaining in overtime to defeat St. John's (1/2), 60-59; also knocked down two free throws with 20 seconds left in regulation to send the game into overtime • converted a season-best 13-for-13 free throws in addition to her third straight double double with 29 points and 16 rebounds against the Red Storm • recorded 800th career field goal at St. John's • grabbed 600th career defensive rebound in team's 62-27 win in the conference opener vs. George Mason (1/10).

**2011-12 Season:** WBCA, John Wooden, Associated Press and USWBA First Team All-American and National Player of the Year finalist • earned the Honda Inspiration Award • first team WBCA All-Region 2 selection • CAA and ECAC Player of the Year • named first team All-CAA and ECAC All-East • selected to CAA All-Defensive Team and All-Academic Team • Capital One/CoSIDA Academic All-American of the Year for women's basketball • Capital One/CoSIDA first team Academic All-American and first team All-District 2 • CAA Female Scholar-Athlete of the Year • named UD Alumni Association Team MVP and earned Blue Hen Basketball Club Outstanding Achievement Award • NetScouts National Player of the Week (Jan. 8) and USWBA National Player of the Week (Jan. 10) • named ECAC Player of the Week twice, CAA Player of the Week nine times, and National 5&10 Best of the Blue Hens Athlete of the Week four times • selected to CAA Academic Honor Roll • set UD single-season records with 28.1 points per game, 927 points, 340 rebounds, 325 field goals made, 625 field goals attempted, 225 free throws made, 253 free throws attempted, and 86 blocks • led Division I with 28.1 points per game, most than four points per game more than any other player • ranked eighth in the nation with an 88.9 free throw percentage, 13th with 17 double-doubles, 17th with 10.3 rebounds, 18th with 2.6 blocks, and 20th with a 52.0 field goal percentage • set CAA single-season marks with 927 points and 325 field goals made while ranking second with 225 free throws made, fourth with 86 blocks, and eighth with 340 rebounds • led the CAA with 28.1 points per game, an 88.9 free throw percentage, and 2.6 blocks • was second in the league with a 52.0 field goal percentage, a 41.3 three-point percentage, and 7.0 defensive rebounds, third with 10.3 rebounds, fifth with 3.3 offensive rebounds, and 11th with 1.6 three-pointers made

## 2012-13 Game-by-Game

Date	Opponent	FG-A	3FG-A	FT-A	O-D-R	PF	A	T	B	S	Pts.	Min.
11/9	Sam Houston State				DNP - Lyme Disease							
11/11	Georgetown				DNP - Lyme Disease							
11/14	at Duquesne				DNP - Lyme Disease							
11/20	Providence	9-20	1-4	3-4	0-8-8	1	2	2	1	0	22	27
11/28	Saint Bonaventure				DNP - Lyme Disease							
12/5	at Rhode Island				DNP - Lyme Disease							
12/9	Princeton				DNP - Lyme Disease							
12/20	Maryland	7-23	2-3	3-4	2-4-6	1	1	1	2	1	19	34
12/23	at Monmouth	10-14	4-5	6-6	2-7-9	1	2	1	2	0	30	24
12/29	vs. Villanova	6-17	1-2	4-4	3-9-12	1	1	1	2	1	17	36
12/30	vs. Duquesne	7-15	2-5	7-7	1-12-13	1	1	3	4	0	23	32
1/2	at St. John's	7-23	2-3	13-13	4-12-16	1	2	3	2	1	29	43
1/10	George Mason	8-12	2-5	1-1	1-6-7	0	2	0	0	1	19	20
1/13	at Old Dominion											
1/15	at Northeastern											
1/20	Towson											
1/24	UNCW											
1/27	at Drexel											
1/29	Northeastern											
1/31	at Georgia State											
2/3	Hofstra											
2/7	at Towson											
2/10	at James Madison											
2/14	Old Dominion											
2/17	at William & Mary											
2/19	at George Mason											
2/24	James Madison											
2/28	at Hofstra											
3/3	Drexel											
3/6	Georgia State											

## Season/Career Highs

	2012-13	Career
Points	30 at Monmouth, 12/22	54 at James Madison, 2/18/10
Field Goals	10 at Monmouth, 12/22	18 at James Madison, 2/18/10
Field Goal Att.	23, 2x at St. John's, 1/2	29, twice
3-pt. Field Goals	4 at Monmouth, 12/22	7 at James Madison, 2/18/10
3-pt. Field Goal Att.	5, 3x vs. George Mason, 1/10	10, twice
Free Throws	13 at St. John's, 1/2	17 at William & Mary, 2/13/11
Free Throw Att.	13 at St. John's, 1/2	19 at William & Mary, 2/13/11
Rebounds	16 at St. John's, 1/2	18, twice
Assists	2, 4x vs. George Mason, 1/10	5, six times
Blocks	4 vs. Duquesne, 12/30	7 vs. Hofstra, 3/3/10
Steals	1, 4x vs. George Mason, 1/10	5 at Hofstra, 1/24/10
Minutes	43 at St. John's, 1/2	50 vs. Drexel, 1/17/10

## Elena Delle Donne at Delaware

Year	GP/GS	Min.	Avg.	FG-FGA	FG%	3FG-3FGA	3FG%	FT-FTA	FT%	OR	DR	Tot	Avg.	PF	FO	A	TO	B	S	Pts	Avg.
2009-10	29/28	1087	37.5	257-539	.477	66-160	.413	194-216	.898	69	185	254	8.8	43	0	56	69	60	38	774	26.7
2010-11	22/21	783	35.6	177-422	.419	36-103	.350	167-177	.944	43	129	172	7.8	29	0	40	45	58	21	557	25.3
2011-12	33/32	1115	33.8	325-625	.520	52-126	.413	225-253	.889	110	230	340	10.3	35	0	75	55	86	39	927	28.1
2012-13	7/7	216	30.9	54-124	.435	14-27	.519	37-39	.949	14	58	72	10.3	6	0	11	11	13	4	159	22.7
<b>Totals</b>	<b>91/88</b>	<b>3201</b>	<b>35.2</b>	<b>813-1710</b>	<b>.475</b>	<b>168-416</b>	<b>.404</b>	<b>623-685</b>	<b>.909</b>	<b>236</b>	<b>602</b>	<b>838</b>	<b>9.2</b>	<b>113</b>	<b>0</b>	<b>182</b>	<b>180</b>	<b>217</b>	<b>102</b>	<b>2417</b>	<b>26.6</b>

per game • appeared in all 33 games while starting 32 • led the Blue Hens in scoring during 31 games, and tied for the team lead in the other two • reached double figures in every game, and surpassed the 20-point mark in all but three contests • eclipsed the 30-point mark 13 times and the 40-mark point three times • scored a game-high 33 points and tied for the team lead with six rebounds against Rhode Island (11/11) • scored a game-high 40 points and led the team with 12 rebounds against Penn State (11/17) • posted 22 points and grabbed nine rebounds against Villanova (11/22) • scored 26 points and grabbed 18 rebounds at Saint Bonaventure (11/27) • scored a game-high 32 points and led the team with nine rebounds and five blocks during the victory at Princeton (12/1) • led the Blue Hens with a game-high 23 points, nine rebounds, five assists, and three blocks during the win vs. William & Mary (12/4) • scored a game-high 28 points during the victory over Yale (12/5) • recorded a double-double with 30 points and 13 rebounds during the win at Wake Forest (12/11) • scored a game-high 29 points while adding nine rebounds and three blocks against Providence (12/19) • named to the Maryland Terrapin Classic All-Tournament Team as she averaged 27.0 points and 8.0 rebounds per game, scoring 22 points in the win over East Carolina (12/28) and a game-high 32 points vs. fifth-ranked Maryland (12/29) • scored 37 points to become the UD women's basketball all-time career scoring leader during the win vs. Towson (1/5) • scored 40 points to go with 15 rebounds during the win at George Mason (1/8) • posted 23 points, five rebounds, five assists, and three steals vs. UNCW (1/12) • recorded a double-double with 22 points and 10 rebounds at Northeastern (1/15) • scored 15 points to go with eight rebounds and three steals during the win at Towson (1/19) • recorded 21 points, seven rebounds, and three blocks during the victory vs. Drexel (1/22) • set a BCC scoring record vs. Hofstra with 41 points to go with 15 boards and five assists (1/26) • recorded 23 points, nine boards, and four blocks while going 13-of-15 from the free throw line during the win at James Madison (1/29) • recorded a double-double with 29 points and 14 rebounds in the win at UNCW (2/2) • posted a double-double with 22 points and 12 boards during the victory over VCU (2/5) • scored 27 points, pulled down 15 boards, and made three blocks for a double-double vs. Old Dominion (2/9) • recorded 31 points and eight rebounds at Georgia State (2/12) • surpassed the 2,000 career point milestone en route to a double-double with a season-high 42 points to go with 14 rebounds and six blocks at Hofstra (2/16) • became UD's all-time leading scorer for both men's and women's basketball as she scored 12 points to go with 14 boards to surpass 2,030 career points, in addition to hitting the game-winning shot just before the buzzer, in the victory at Drexel (2/19) • recorded a double-double with 28 points and 11 rebounds against George Mason (2/23) • posted 35 points and seven rebounds in the win vs. Northeastern (2/26) • recorded a double-double with 26 points and 11 boards to go with three blocks at William & Mary (2/29) • totaled 63 points, 27 rebounds, and nine blocks in the CAA Tournament, when she was named CAA Tournament Most Outstanding Player • scored 39 points during the NCAA Tournament First Round win at Arkansas Little Rock (3/18), the highest in an NCAA Tournament preliminary game since 2008 • scored 34 points and grabbed 10 boards for her 17th double-double of the year during the NCAA Tournament Second Round contest against Kansas (3/20).

**Summer 2011:** Member of Team USA World University Games squad • first Delaware player to be named to the team and the first CAA player since 1993 • helped lead United States to a perfect 6-0 record and the gold medal during the international tournament that was held in Shenzhen, China • first player from the CAA to earn World University Games Gold as a member of Team USA • led USA with 15.7 points per game and 8.5 rebounds per game, and was tied for second with five blocks • had the second best three-point percentage at 44.0 percent (11 of 25) • hit 45.1 percent of her field goals, going 37 of 82 from the field • averaged 22.7 minutes per game • recorded double-doubles against Slovakia (10p, 10r), Australia (22p, 11r), and a near triple-double against Taiwan in the gold medal game (10p, 11r, 8a) • helped Team USA to a +45.0 scoring margin, averaging 97.8 points per game with three 100-point efforts.

**2010-11 Season:** Named honorable mention Associated Press All-America • named first team All-CAA and first team CAA All-Academic • Capital One/CoSIDA District 2 All-Academic second team selection • UD Alumni Association Team MVP • named second team All-East • earned Delaware Sportswriters & Broadcasters Association John J. Brady Athlete of the Year award • four-time CAA Player of the Week winner who also earned ECAC Player of the Week honors on Feb. 14 • served as team co-captain • appeared in 22 games while starting 21 for the Blue Hens (missed 11 games while being treated for Lyme Disease symptoms) • led Delaware with 25.3 points and ranked second with 7.8 rebounds • became the fastest player in CAA and Delaware history, and the second fewest games in NCAA history, to reach 1,000 career points in 38 games, doing so against Northeastern (2/3) • converted 94.4 percent of her free throw attempts (167 of 177), setting a UD single season record • ranked second in a school single season with 25.3 points per game, third with 557 points and 167 free throws made, and fourth with 58 blocked shots • reached the 30-point mark eight times, including a season-high 41 at Yale (11/20), going 15 of 25 from the floor • eclipsed the 20-point plateau in all but four games on the year • posted seven double-doubles during the season • scored 36 points in the season-opening win over UMBC (11/12), and added 34 points and 12 rebounds the following contest against Villanova (11/16) • added a double-double with 26 points and 12 boards during a victory over St. Francis-Pa. (11/23) dropped in 28 points on 9 of 18 shooting at Hofstra (1/30) in her first game back from illness, and reached the 20-point mark in each of the next three contests • snared a career-high 18 rebounds against Drexel (2/6) • recorded three consecutive double-doubles against Drexel (18p, 18r), Towson (21p, 11r), and William & Mary (33p, 10r) • reached several records at William & Mary with 17 free throws made (Kaplan Arena, t-2nd CAA, t-1st Delaware) and 19 free throws attempted (t-1st Delaware, t-1st Kaplan Arena, t-6th CAA) • broke her own consecutive free throws made record by hitting 52 straight from Feb. 20 until Mar. 13 • scored 31 points during a victory over VCU (2/24) • posted a double-double with 31 points and 10 rebounds during a CAA Tournament quarterfinal victory over Old Dominion (3/11), and added 29 points and 10 boards the following day during a win over UNC Wilmington in the semifinals • selected to the CAA All-Tournament Team after averaging 25.0 points dur-

ing the four games • contributed 31 points during the WNIT game at Toledo (3/16) • led the Blue Hens in scoring during 13 of the final 14 games of the season • selected to Preseason Wooden, Naismith and Wade National Player of the Year watch lists • Preseason Associated Press All-American and Basketball Times Preseason Second Team All-American • selected CAA Preseason Co-Player of the Year.

**2009-10 Season:** Played a record-breaking All-American freshman season for the Blue Hens • became the first UD player to be named an All-American • selected to the Associated Press Third Team and a WBCA State Farm Honorable Mention • one of 20 finalists for the Wooden National Player of the Year Award • named ECAC Rookie of the year and selected to the ECAC First Team • became just the second player in Colonial Athletic Association history to receive CAA Player and Rookie of the Year accolades • additionally was named to the CAA First, All-Rookie, All-Defensive, and All-Tournament Teams • awarded the UD Alumni Association Team Most Valuable Player Award and the Blue Hen Basketball Club Outstanding Achievement Award at annual banquet • was honored on multiple occasions as CAA Player and Rookie of the Week • selected as the Army ROTC Best of the Blue Hens Athlete of the Week four times • played one of two games at the Coors Rocky Mountain Invitational and was named to the All-Tournament Team • saw action in 29 games while starting 28 • sat four games due to injury • scored 774 points to set a new single-season record while averaging 26.7 points per game, the third most in the nation • pulled down 254 rebounds good for an average of 8.8 per game • ranked second in the conference with 60 blocks • led the Blue Hens with 38 steals and dished out 56 assists, the second most on the team • went 194-for-216 from the charity stripe to lead the CAA and rank sixth in the nation with an 89.8 percent conversion rate • set a new UD record having drained 66 three-pointers throughout the season • made major headlines with a 54 point performance in Delaware's overtime loss at James Madison (2/18) • went 18-for-28 from the field and 7-for-8 from behind the arc to set new Delaware records • tallied seven 30-plus point games as a freshman, a Delaware career record • recorded eight consecutive 20-plus point performances while scoring in double figures each of her 29 games • drained 16-of-17 free throws against Hofstra (3/3) • set a new UD consecutive free throw record with 39 • kicked off the stretch at George Mason (1/7) before missing her first in six games at Hofstra (1/24) • shot a perfect game from the free throw line on 12 occasions • pulled down a season-high 16 boards at Northeastern (1/10) to help notch one of 12 double-doubles tallied throughout the year • served out five assists on three occasions • made a team season-high six steals against Old Dominion (1/3) and added five against Hofstra • that same game she swatted away a season-high seven blocked shots • also posted six blocks against Georgia State (2/14) and Drexel (1/17) • played a Delaware record 50 minutes of action in the Hens' double overtime loss to the Dragons • added 45 minutes in one of the Hens' three overtime games with Drexel (1/31) • featured on the cover of the July issue of Delaware Today magazine after being named the Best Athlete in the Best of Delaware 2010 poll.

**2008-09 Season:** Did not compete for the Blue Hen basketball team • selected to the CAA All-Rookie Team in volleyball • earned three CAA Rookie of the Week awards • led Delaware with 117 blocks and ranked second on the team with a .223 hitting percentage • volleyball team went 19-16, won its second consecutive CAA Championship, and made its second straight NCAA Tournament appearance under head coach Bonnie Kenny.

**High School:** Ranked as the nation's top senior • DJAA all-time leading scorer with 2,818 career points • was named co-Delaware State Player of the Year following junior season and was tabbed the Player of the Year as a senior • led Ursuline Academy to four Delaware state championships (2004, 2005, 2006, and 2008) • 2007-08 National Player of the Year by the Naismith and McDonald's foundations • Parade First Team All-American • 2005, 2006 and 2008 Gatorade Delaware State Player of the Year • 2008 USA Today Player of the Year • 2006 Slam Magazine First Team All-America selection • 2006 Sports Illustrated Second Team All-America pick • USA Today Third Team All-America • 2004, 2005, 2006 All-Delaware First Team • 2005 and 2006 EA Sports All-America • 2005 Street & Smith All-America Third Team • 2004 Street & Smith All-America Honorable Mention • set national high school record by making 80 consecutive free throws in 2005-06 • scored 50 points in the 2006 state championship game • ranked as No. 1 senior by HoopGurlz.com • led Ursuline to 2007 state volleyball championship • member of National Honor Society.





# DANIELLE PARKER



**Senior • Forward • 6-2**  
**Phoenix, Md. • Dulaney**

**2012-13 Season:** Continues to work her way up the Delaware record book; seventh place in UD history with 870 rebounds, eighth with 3446 minutes played, tied for fourth with 121 games played, tied for 19th with 39 blocks, 21st with 142 steals and 26th with 919 points • named to the Dartmouth Blue Sky Classic All-Tournament Team • tied a season-high with 13 rebounds in team's 60-59 overtime victory at St. John's (1/2) • grabbed 100th rebound of season and 900th career point against Duquesne (12/30) in the Dartmouth Blue Sky Classic • neared a double double with 10 points and nine rebounds against nationally ranked Maryland (12/20) • saw a season-high 39 minutes of play against Princeton (12/9) • collected 500th career defensive rebound and moved into eighth place in UD history with a 13-rebound performance at Rhode Island (12/5) in addition to her third double double of the season with 12 points • also tied a career-high with four steals against the Rams • notched 800th career rebound, 100th career start, 300th career offensive rebound and 200th career free throw against St. Bonaventure (11/28) • posted second double double of year with season-high 14 points and 13 rebounds in win over Providence (11/20) • led team with eight rebounds at Duquesne (11/14) • played in a season-high 37 minutes vs. Georgetown (11/11) while registering her first double-double of the season (10 points and season-high 11 rebounds) • grabbed a team-high 12 rebounds while scoring nine points and making three steals in the Blue Hens' win over Sam Houston State in the season opener (11/9).

**2011-12 Season:** Appeared in all 33 games while making 32 starts for the Blue Hens • ranked second on the team with 7.5 rebounds per game and third with 8.6 points per game • tied for the team lead with 39 steals • connected on 51.3 percent of her field goal attempts, the seventh highest single season total in UD history • ranked eighth in the CAA with 7.5 rebounds per game, tied for eighth with 3.0 offensive rebounds per game, and 12th with 4.5 defensive rebounds per game • reached double figures in scoring 14 times, including eight consecutive games from Jan. 29 through Feb. 23 • reached double figures in rebounds seven times • recorded a double-double with 10 points and a season-high 14 rebounds during the win at George Mason (1/8) • notched a double-double during the victory at Northeastern with 13 points and 10 rebounds (1/15) • posted a season-high 16 points while grabbing six boards during the victory over VCU (2/2) • posted a double-double with 14 points and 11 boards at Hofstra (2/16) • recorded a double-double with 14 points and a game-high 12 rebounds during the win over George Mason (2/23) • earned the team's Unsung Hero Award.

**2010-11 Season:** Appeared in all 34 games while starting 32 • led team with 7.9 rebounds per game and ranked third with 8.1 points per contest • finished season ranked 91st nationally in rebounds per game • ranked fifth in CAA with 5.0 defensive rebounds per game, sixth with 7.9 rebounds per game, and eighth with 3.0 offensive rebounds per game • her 270 rebounds are seventh most in a UD single season • recorded nine double-doubles on the season • posted career-high 18 points vs Old Dominion • grabbed career-high 16 rebounds at La Salle • pulled down double-digit rebounds in six consecutive games, from Nov 16 to Dec 5 • named to CAA All-Tournament Team • selected National 5 & 10 Best of the Blue Hens Athlete of the Week on Feb. 7.

**2009-10 Season:** One of three players to see action in each of the Hens' 33 games • started 28 contests • ranked second on squad in rebounds with 183, good for 5.5 per game • made 25 steals, dished out 13 assists and swatted away nine blocks • shared the UD Most Improved Player Award with Jaquetta May.

**2008-09 Season:** Appeared in eight games and started three before suffering a season-ending ACL injury during a practice in mid-December • averaged 7.4 points per game and 6.0 rebounds per game.

**High School:** Lettered four years of high school at Saint Frances Academy (two years) and Dulaney High School (two years) • first team All-County and All-Metro selection during her junior and senior years.

### Season/Career Highs

	2012-13	Career
Points	14 vs. Providence, 11/20	18 vs. Old Dominion, 1/16/11
Field Goals	7 vs. Providence, 11/20	7, four times
Field Goal Att.	14 at Rhode Island, 12/5	14 at Rhode Island, 12/5/12
3-pt. Field Goals	n/a	n/a
3-pt. Field Goal Att.	n/a	n/a
Free Throws	5 vs. Duquesne, 11/14	7 at Towson, 2/10/11
Free Throw Att.	7 vs. Sam Houston State, 11/9	13 at Towson, 2/10/11
Rebounds	13, 3x at St. John's, 1/2	16 at La Salle, 11/28/10
Assists	2, 2x at Rhode Island, 12/5	3, six times
Blocks	1, 2x vs. St. Bonaventure, 11/28	2, three times
Steals	4 at Rhode Island, 12/5	4, three times
Minutes	42 at St. John's, 1/2	42 at St. John's, 1/2/13

### 2012-13 Game-by-Game

Date	Opponent	FG-A	3FG-A	FT-A	O-D-R	PF	A	T	B	S	Pts.	Min.
11/9	Sam Houston State	3-9	0-0	3-7	6-6-12	2	0	3	0	3	9	30
11/11	Georgetown	5-11	0-0	1-2	2-8-10	2	2	3	1	3	11	37
11/14	at Duquesne	3-8	0-0	5-6	3-5-8	3	0	5	1	2	11	34
11/20	Providence	7-11	0-0	0-2	4-9-13	1	1	1	0	2	14	35
11/28	Saint Bonaventure	1-6	0-0	3-6	6-2-8	2	1	1	1	0	5	27
12/5	at Rhode Island	6-14	0-0	0-0	5-8-13	2	2	1	0	4	12	36
12/9	Princeton	2-4	0-0	0-0	3-4-7	1	0	1	0	0	4	39
12/20	Maryland	4-9	0-0	2-3	3-6-9	1	0	1	0	0	10	34
12/23	at Monmouth	4-7	0-0	3-4	1-4-5	2	0	0	0	1	11	25
12/29	vs. Villanova	6-10	0-0	0-0	4-5-9	1	0	1	0	1	12	34
12/30	vs. Duquesne	5-9	0-0	2-3	1-5-6	3	0	1	0	0	12	30
1/2	at St. John's	1-5	0-0	2-6	6-7-13	3	1	4	0	2	4	42
1/10	George Mason	4-5	0-0	0-0	3-4-7	2	1	1	0	1	8	17
1/13	at Old Dominion											
1/15	at Northeastern											
1/20	Towson											
1/24	UNCW											
1/27	at Drexel											
1/29	Northeastern											
1/31	at Georgia State											
2/3	Hofstra											
2/7	at Towson											
2/10	at James Madison											
2/14	Old Dominion											
2/17	at William & Mary											
2/19	at George Mason											
2/24	James Madison											
2/28	at Hofstra											
3/3	Drexel											
3/6	Georgia State											

### Danielle Parker at Delaware

Year	GP/GS	Min.	Avg.	FG-FGA	FG%	3FG-3FGA	3FG%	FT-FTA	FT%	OR	DR	Tot	Avg.	PF	FO	A	TO	B	S	Pts	Avg.
2008-09	8/3	242	30.3	24-54	.444	0-0	---	11-16	.688	17	31	48	6.0	15	0	7	7	3	13	59	7.4
2009-10	33/28	821	24.9	62-148	.419	0-0	---	53-87	.609	67	116	183	5.5	66	1	13	59	9	25	177	5.4
2010-11	34/32	1036	30.5	98-237	.414	0-0	---	81-128	.633	101	169	270	7.9	64	1	18	52	17	46	277	8.1
2011-12	33/32	927	28.1	119-232	.513	0-0	---	45-60	.750	99	150	249	7.5	59	0	48	41	7	39	283	8.6
2012-13	13/13	420	32.3	51-108	.472	0-0	---	21-39	.538	47	73	120	9.2	25	0	8	23	3	19	123	9.5
<b>Totals</b>	<b>121/108</b>	<b>3446</b>	<b>28.5</b>	<b>354-779</b>	<b>.454</b>	<b>0-0</b>	<b>---</b>	<b>211-330</b>	<b>.639</b>	<b>331</b>	<b>539</b>	<b>870</b>	<b>7.2</b>	<b>229</b>	<b>2</b>	<b>94</b>	<b>182</b>	<b>39</b>	<b>142</b>	<b>919</b>	<b>7.6</b>



# KELSEY BUCHANAN

# 13

**Junior • Center • 6-3**  
**South Riding, Va. • Freedom**

**2012-13 Season:** Collected season-highs in free throws (3), free throw attempts (4), rebounds (7), assists (1), blocks (2), steals (1) and minutes played (19) against Princeton (12/9) • contributed two points and two rebounds in win at Rhode Island (12/5) • saw a season-best game against St. Bonaventure (11/28) with eight points (3-for-7 FG; 2-for-3 FT), seven rebounds and one blocked shot in 19 minutes of play • collected first blocked shot of the season at Duquesne (11/14) • matched career-high with her second start of the season vs. Georgetown (11/11), remains perfect from the free-throw line with second straight, 2-for-2 game from the charity stripe against the Hoyas • scored six points and grabbed two rebounds during the season-opening victory over Sam Houston State (11/9).

**2011-12 Season:** Appeared in 26 games for the Blue Hens, averaging 10.2 minutes per contest • contributed 3.4 points and 2.3 rebounds per game • connected on 64.8 percent (35 of 54) of her field goal attempts • went 19 of 21 from the free throw line • scored seven points, going 2 of 2 from the field and 3 of 3 from the free throw line, during the season-opening win over Rhode Island (11/11) • recorded four rebounds and two points during the victory at Princeton (12/1) • scored six points and grabbed three rebounds in the win over William & Mary (12/4) • scored five points and collected four rebounds during the victory over Yale (12/5) • scored six points during the win at Providence (12/19) • recorded six points and two boards in the win vs. UNCW (1/12) • contributed six points and three rebounds during the win at Towson (1/19) • went 4 of 4 from the field to finish with nine points against Hofstra (1/26) • grabbed six boards during the victory over VCU (2/5) • went 4 of 4 from the foul line and pulled down three rebounds in the win vs. Old Dominion (2/9) • went 3 of 3 from the floor and 2 of 2 from the line for eight points at Georgia State (2/12) • scored six points during the win over George Mason (2/23) • recorded four points and three rebounds vs. Northeastern (2/26) • dished out a career-high four assists during the victory at William & Mary (2/29) • scored a career-high 10 points and pulled down six boards during the CAA Tournament Semifinal win over UNCW (3/10) • earned the Team Most Improved Player Award.

**2010-11 Season:** Saw action in 23 games, including two starts against Georgia State (1/23) and George Mason (1/27) • averaged 2.1 points and 2.1 rebounds per game • played her finest game against Alcorn State (12/30), tallying a career-high nine points, going 4 of 10 from the field and pulling down seven rebounds while playing in 21 minutes • recorded a career-high eight rebounds against Princeton (12/1) • scored seven points and grabbed four rebounds versus Vanderbilt (12/29) • went 3 for 3 from the field to finish with six points against George Mason (1/27) • had four points and three rebounds during a win at Georgia State.

**High School:** Played all four years at two-time Virginia State Champion Freedom High School • posted a triple-double in first game of state playoffs • holds state blocks record with 10 • named Player of the Year and All-State in 2010 • earned All-Regional Player of the Year accolades • graduated with over 1,500 points • member of the National Honor Society in junior and senior years • honor roll student all four years.

### 2012-13 Game-by-Game

Date	Opponent	FG-A	3FG-A	FT-A	O-D-R	PF	A	T	B	S	Pts.	Min.
11/9	Sam Houston State	2-4	0-0	2-2	1-1-2	0	0	0	0	0	6	17
11/11	Georgetown	0-2	0-0	2-2	0-2-2	2	1	2	0	0	2	11
11/14	at Duquesne	1-2	0-0	0-0	0-0-0	0	0	1	1	0	2	3
11/20	Providence	0-4	0-0	0-0	2-0-2	0	0	0	0	0	0	6
11/28	Saint Bonaventure	3-7	0-0	2-3	4-3-7	2	0	0	1	0	8	19
12/5	at Rhode Island	1-2	0-0	0-0	1-1-2	1	0	0	0	0	2	11
12/9	Princeton	1-4	0-0	3-4	2-5-7	2	1	1	2	1	5	19
12/20	Maryland	0-4	0-0	1-2	2-0-2	3	0	1	0	0	1	17
12/23	at Monmouth	2-3	0-0	0-0	1-0-1	0	0	0	0	0	4	13
12/29	vs. Villanova	0-1	0-0	0-0	0-2-2	0	0	1	0	0	0	9
12/30	vs. Duquesne	1-1	0-0	0-0	0-1-1	0	0	2	0	0	2	4
1/2	at St. John's	0-0	0-0	0-0	0-0-0	0	0	0	0	0	0	2
1/10	George Mason	0-1	0-0	0-0	1-0-1	2	0	0	0	0	0	7
1/13	at Old Dominion											
1/15	at Northeastern											
1/20	Towson											
1/24	UNCW											
1/27	at Drexel											
1/29	Northeastern											
1/31	at Georgia State											
2/3	Hofstra											
2/7	at Towson											
2/10	at James Madison											
2/14	Old Dominion											
2/17	at William & Mary											
2/19	at George Mason											
2/24	James Madison											
2/28	at Hofstra											
3/3	Drexel											
3/6	Georgia State											

### Season/Career Highs

	2012-13	Career
Points	8 vs. St. Bonaventure, 11/28	10 vs. UNCW, 3/10/12
Field Goals	3 vs. St. Bonaventure, 11/28	5 vs. UNCW, 3/10/12
Field Goal Att.	7 vs. St. Bonaventure, 11/28	10 vs. Alcorn State, 12/30/10
3-pt. Field Goals	n/a	n/a
3-pt. Field Goal Att.	n/a	n/a
Free Throws	3 vs. Princeton, 12/9	4, twice
Free Throw Att.	4 vs. Princeton, 12/9	5 vs. William & Mary, 12/4/11
Rebounds	7, 2x vs. Princeton, 12/9	8 vs. Princeton, 12/1/10
Assists	1, 2x vs. Princeton, 12/9	4 at William & Mary, 2/29/12
Blocks	2 vs. Princeton, 12/9	2, 2x vs. Princeton, 12/9/12
Steals	1 vs. Princeton, 12/9	1, 10x
Minutes	19, 2x vs. Princeton, 12/9	22 vs. UNCW, 3/10/12

### Kelsey Buchanan at Delaware

Year	GP/GS	Min.	Avg.	FG-FGA	FG%	3FG-3FGA	3FG%	FT-FTA	FT%	OR	DR	Tot	Avg.	PF	FO	A	TO	B	S	Pts	Avg.
2010-11	23/2	171	7.1	20-44	.455	0-0	---	8-16	.500	20	29	49	2.1	20	0	4	16	4	4	48	2.1
2011-12	26/0	266	10.2	35-54	.648	0-0	---	19-21	.905	25	35	60	2.3	26	0	9	16	3	6	89	3.4
2012-13	13/2	138	10.6	11-35	.314	0-0	---	10-13	.769	14	15	29	2.2	12	0	2	8	4	1	32	2.5
<b>Totals</b>	<b>62/4</b>	<b>575</b>	<b>9.3</b>	<b>66-133</b>	<b>.496</b>	<b>0-0</b>	<b>---</b>	<b>37-50</b>	<b>.740</b>	<b>59</b>	<b>79</b>	<b>138</b>	<b>2.2</b>	<b>58</b>	<b>0</b>	<b>15</b>	<b>40</b>	<b>11</b>	<b>11</b>	<b>169</b>	<b>2.7</b>



# ALECIA BELL

14

**Freshman • Guard/Forward • 6-0**  
**Newport News, Va. • Woodside**

**2012-13 Season:** Recorded first career field goal and assist in team's 62-27 conference opening win against George Mason (1/10) • collected career-high three points on 3-of-4 shooting from the charity stripe in Delaware's 82-53 win at Monmouth (12/22) • saw career-high 11 minutes of action at Duquesne (11/14) • scored one point and collected three rebounds during the season-opening win over Sam Houston State (11/9).

**High School:** Four-year member of the basketball and outdoor track teams at Woodside High School • led Woodside to the AAA Peninsula District regular season and tournament championships as a junior and senior, and the regional championship as a senior • earned first team All-District, All-Region and All-State honors during senior year • selected Woodside Female Athlete of the Year and Senior Athlete of the Year • first team All-District and All-Region, and honorable mention All-State as a junior • named second team All-District as a sophomore and honorable mention All-District as a freshman • earned 2012 U.S. Army Reserve National Student-Athlete Award • given President's Award for Educational Excellence • 800 meter district champion in 2012 • honor roll student during all four years of high school.

## 2012-13 Game-by-Game

Date	Opponent	FG-A	3FG-A	FT-A	O-D-R	PF	A	T	B	S	Pts.	Min.
11/9	Sam Houston State	0-1	0-0	1-2	2-1-3	0	0	0	0	0	1	4
11/11	Georgetown				DNP - CD							
11/14	at Duquesne	0-2	0-0	0-0	2-3-5	0	0	0	0	0	0	11
11/20	Providence	0-0	0-0	0-0	0-0-0	0	0	0	0	0	0	2
11/28	Saint Bonaventure				DNP - CD							
12/5	at Rhode Island	0-0	0-0	0-0	0-0-0	0	0	0	0	0	0	1
12/9	Princeton				DNP - CD							
12/20	Maryland				DNP - CD							
12/23	at Monmouth	0-3	0-0	3-4	1-0-1	0	0	0	0	0	3	5
12/29	vs. Villanova				DNP - CD							
12/30	vs. Duquesne				DNP - CD							
1/2	at St. John's				DNP - CD							
1/10	George Mason	1-3	0-0	0-0	1-1-2	1	1	0	0	0	2	8
1/13	at Old Dominion											
1/15	at Northeastern											
1/20	Towson											
1/24	UNCW											
1/27	at Drexel											
1/29	Northeastern											
1/31	at Georgia State											
2/3	Hofstra											
2/7	at Towson											
2/10	at James Madison											
2/14	Old Dominion											
2/17	at William & Mary											
2/19	at George Mason											
2/24	James Madison											
2/28	at Hofstra											
3/3	Drexel											
3/6	Georgia State											

## Season/Career Highs

	2012-13	Career
Points	3 at Monmouth, 12/22	same
Field Goals	1 vs. George Mason, 1/10	same
Field Goal Att.	3 at Monmouth, 12/22	same
3-pt. Field Goals	n/a	same
3-pt. Field Goal Att.	n/a	same
Free Throws	3 at Monmouth, 12/22	same
Free Throw Att.	4 at Monmouth, 12/22	same
Rebounds	5 vs. Duquesne, 11/14	same
Assists	1 vs. George Mason, 1/10	same
Blocks	n/a	same
Steals	n/a	same
Minutes	11 vs. Duquesne, 11/14	same

## Alecia Bell at Delaware

Year	GP/GS	Min.	Avg.	FG-FGA	FG%	3FG-3FGA	3FG%	FT-FTA	FT%	OR	DR	Tot	Avg.	PF	FO	A	TO	B	S	Pts	Avg.
2012-13	6/0	31	5.2	1-9	.111	0-0	---	4-6	.667	6	5	11	1.8	1	0	1	0	0	0	6	1.0
<b>Totals</b>	<b>6/0</b>	<b>31</b>	<b>5.2</b>	<b>1-9</b>	<b>.111</b>	<b>0-0</b>	<b>---</b>	<b>4-6</b>	<b>.667</b>	<b>6</b>	<b>5</b>	<b>11</b>	<b>1.8</b>	<b>1</b>	<b>0</b>	<b>1</b>	<b>0</b>	<b>0</b>	<b>0</b>	<b>6</b>	<b>1.0</b>





# AKEEMA RICHARDS

# 15

Junior • Guard • 5-7

Baltimore, Md. • Western • West Virginia

**2012-13 Season:** Led team with four assists in conference opening win (62-27) over George Mason (1/10) • saw limited time in past three games (Villanova 12/29, Duquesne 12/30, St. John's 1/2) due to illness • collected 1,000th career minute of action against ninth-ranked Maryland (12/20) • played a season-best game against Princeton (12/9) with 13 points, five field goals on 16 attempts, three free throws on four attempts, seven rebounds and one block in 33 minutes of action • tied a career-high with three steals in a season-high 31 minutes of action in win at Rhode Island (12/5) • upped her season-high point total with a 10-point performance in 28 minutes of action against St. Bonaventure (11/28) • tied season-high nine points on 4-of-10 shooting with one free throw against Providence (11/20) • recorded season-high nine points in 28 minutes of play with three rebounds and two assists at Duquesne (11/14) • tallied three points with one rebound and one assist in 20 minutes vs. Georgetown (11/11) • tied her career-high with four assists while adding two points and four rebounds during the season-opening victory over Sam Houston State (11/9).

**2011-12 Season:** Appeared in all 33 games while starting 32 for the Blue Hens • ranked fourth on the team with 4.4 rebounds per game and fifth with 6.2 points per game • also was fourth on the squad with 61 assists and 31 steals • reached double figures in seven games • scored eight points in the season-opening win over Rhode Island (11/11) during her Blue Hen debut • scored four points, grabbed six rebounds, and handed out four assists in the win against Villanova (11/22) • recorded seven points and three rebounds in the win at Saint Bonaventure (11/27) • posted 10 points, three steals, and three rebounds during the victory at Princeton (12/1) • ranked second on the team with seven rebounds and added eight points in the win over William & Mary (12/4) • scored eight points and grabbed six rebounds in the win at Wake Forest (12/11) • scored 10 points in the win vs. East Carolina (12/28) and added six points vs. fifth-ranked Maryland (12/29) at the Maryland Terrapin Classic • recorded six points, three rebounds, and two blocks in the win vs. UNCW (1/12) • scored 11 points to go with seven boards during the victory at Towson (1/19) • recorded a double-double with a season-high 14 points and 10 boards to go with four assists against Drexel (1/22) • scored seven points while adding four boards and two assists at James Madison (1/26) • recorded eight points in the win at UNCW (2/2) • posted 12 points and six boards during the victory over VCU (2/5) • scored six points and pulled down five rebounds at Hofstra (2/16) • posted 11 points, five rebounds, two assists, and two steals at William & Mary (2/29) • totaled 20 points, 20 rebounds, and five assists during the CAA Tournament run, earning CAA All-Tournament Team accolades • grabbed a season-best 11 rebounds during the win over Drexel in the CAA Championship (3/11).

**2010-11 Season:** Sat out season as a redshirt per NCAA transfer rules after transferring from West Virginia.

**At West Virginia: 2009-10 Season:** Played in 31 games for the Mountaineers, making one start • averaged 2.1 points per game • hit 40.3 percent (29 of 72) of her field goals • pulled down 26 defensive rebounds while recording 27 steals • played 9.9 minutes per contest • team went 29-6 overall and 13-3 in the Big East • scored two points and had one rebound in the first round of the NCAA Tournament • team reached second round of the Big Dance • qualified for Dean's List at WVU.

**High School:** Played all four years at Western High School in Baltimore • team won city and regional championships four consecutive years • reached semifinals on two occasions • member of the National Honor Society.

## 2012-13 Game-by-Game

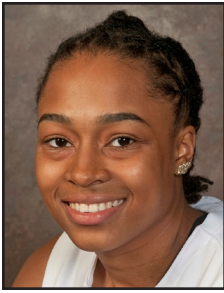
Date	Opponent	FG-A	3FG-A	FT-A	O-D-R	PF	A	T	B	S	Pts.	Min.
11/9	Sam Houston State	1-6	0-0	0-0	1-3-4	1	4	1	0	0	2	23
11/11	Georgetown	1-3	0-0	1-2	0-1-1	2	1	1	0	0	3	20
11/14	at Duquesne	4-11	0-0	1-2	1-2-3	3	2	4	0	0	9	28
11/20	Providence	4-10	0-0	1-2	0-3-3	0	0	1	1	1	9	26
11/28	Saint Bonaventure	4-11	0-0	2-4	1-2-3	1	2	3	0	1	10	28
12/5	at Rhode Island	4-12	0-0	1-1	2-2-4	3	2	2	0	3	9	31
12/9	Princeton	5-16	0-0	3-4	2-5-7	3	1	3	0	0	13	33
12/20	Maryland	0-6	0-0	0-0	2-2-4	0	1	1	0	1	0	20
12/23	at Monmouth	3-7	0-0	0-0	2-1-3	0	1	2	0	0	6	18
12/29	vs. Villanova	1-2	0-0	0-0	1-1-2	0	0	0	0	1	2	9
12/30	vs. Duquesne	0-0	0-0	0-0	0-0-0	0	1	1	0	0	0	8
1/2	at St. John's	0-0	0-0	0-0	0-0-0	0	0	3	0	1	0	5
1/10	George Mason	1-6	0-0	2-2	1-2-3	1	4	3	1	1	4	18
1/13	at Old Dominion											
1/15	at Northeastern											
1/20	Towson											
1/24	UNCW											
1/27	at Drexel											
1/29	Northeastern											
1/31	at Georgia State											
2/3	Hofstra											
2/7	at Towson											
2/10	at James Madison											
2/14	Old Dominion											
2/17	at William & Mary											
2/19	at George Mason											
2/24	James Madison											
2/28	at Hofstra											
3/3	Drexel											
3/6	Georgia State											

## Season/Career Highs

	2012-13	Career
Points	13 vs. Princeton, 12/9	14 vs. Drexel, 1/22/12
Field Goals	5 vs. Princeton, 12/9	6 vs. UNCW, 3/10/12
Field Goal Att.	16 vs. Princeton, 12/9	16 vs. Princeton, 12/9/12
3-pt. Field Goals	n/a	n/a
3-pt. Field Goal Att.	n/a	n/a
Free Throws	3 vs. Princeton, 12/9	4 vs. Drexel, 1/22/12
Free Throw Att.	4, 2x vs. Princeton, 12/9	4, six times
Rebounds	7 vs. Princeton, 12/9	11 vs. Drexel, 3/11/12
Assists	4, 2x vs. George Mason, 1/10	4, four times
Blocks	1, 2x vs. George Mason, 1/10	2 vs. UNCW, 1/12/12
Steals	3 at Rhode Island, 12/5	3, three times
Minutes	33 vs. Princeton, 12/9	35, twice

## Akeema Richards at Delaware

Year	GP/GS	Min.	Avg.	FG-FGA	FG%	3FG-3FGA	3FG%	FT-FTA	FT%	OR	DR	Tot	Avg.	PF	FO	A	TO	B	S	Pts	Avg.
2011-12	33/32	797	24.2	91-216	.421	0-0	---	24-38	.632	48	98	146	4.4	53	0	61	62	6	31	206	6.2
2012-13	13/13	267	20.5	28-90	.311	0-0	---	11-17	.647	13	24	37	2.8	14	0	19	25	2	9	67	5.2
<b>Totals</b>	<b>46/45</b>	<b>1,064</b>	<b>23.1</b>	<b>119-306</b>	<b>.389</b>	<b>0-0</b>	<b>---</b>	<b>35-55</b>	<b>.636</b>	<b>61</b>	<b>122</b>	<b>183</b>	<b>4.0</b>	<b>67</b>	<b>0</b>	<b>80</b>	<b>87</b>	<b>8</b>	<b>40</b>	<b>273</b>	<b>5.9</b>



# TRUMAE LUCAS



Senior • Guard • 5-8

Greensboro, N.C. • Grimsley • Florida

**2012-13 Season:** Scored 100th career field goal against Villanova (12/29) in the Dartmouth Blue Sky Classic • collected second block of season in addition to seven points and three rebounds in team's 82-53 win at Monmouth (12/22) • tied a season-high with three assists against ninth-ranked Maryland (12/20) • saw limited time against Princeton (12/9) after suffering a sprained ankle • was a perfect 2-for-2 from the free throw line against St. Bonaventure (11/28) • dished out a season-high three assists at Duquesne (11/14) • tallied her second-straight, season-high, 14-point game vs. Georgetown (11/11), matched season high in assists (2) in season-high 32 minutes • led the Blue Hens with 14 points while adding a career-high six rebounds during the season-opening win over Sam Houston State (11/9).

**2011-12 Season:** Appeared in all 33 games while making 32 starts for the Blue Hens • led the team with 112 assists • ranked third on the squad with 35 steals and fourth with 6.8 points per game • was fourth in the Colonial Athletic Association with a 1.6 assist/turnover ratio and 10th with 3.4 assists per game • recorded six double figure scoring games • scored 14 points and handed out two assists during the season-opening winover Rhode Island in her Blue Hen debut (11/11) • scored a season-high 15 points and posted four assists against Penn State (11/17) • recorded five assists in the victory at Saint Bonaventure (11/27) • ranked second on the team with 12 points and added three rebounds, three steals, and three assists during the win at Princeton (12/1) • scored nine points and added three steals in the victory at Wake Forest (12/11) • recorded six points, five assists, and three rebounds against Providence (12/19) • delivered nine points, three steals, and four rebounds in the win vs. East Carolina (12/28) and ranked second on the team with 14 points vs. fifth-ranked Maryland (12/29) at the Maryland Terrapin Classic • scored eight points and added three assists in the win over Towson (1/5) • dished out eight assists to go with four points and two steals vs. VCU (2/5) • recorded six points, two steals, and two rebounds during the win over Old Dominion (2/9) • handed out a season-high nine assists while scoring six points at Georgia State (2/12) • tied her season-high with 15 points while adding seven assists and five rebounds at Hofstra (2/16) • dished out six assists during the win against George Mason (2/23) • scored 14 points on 7 of 9 shooting from the field during the CAA Tournament Quarterfinal victory over Old Dominion (3/9) • scored eight points during the NCAA Tournament Second Round game against Kansas (3/20).

**2010-11 Season:** Sat out the season as a redshirt due to NCAA transfer regulations.

**At Florida: 2009-10 Season:** Played in 30 games, including all 16 conference games, for the Gators • starting the first three games of the year • averaged 5.3 points per game • grabbed 1.9 rebounds per contest • averaged 16.4 minutes per game • scored a career-best 15 points in a win over Jacksonville • leading guard scorer off the bench • paced the Gators in scoring on three occasions • shot 36.2 percent from the floor (64 of 177) • recorded 21 steals and 53 assists • sank 11 consecutive free throws • earned All-Southeastern Conference Academic Honor status • team went 39-25 during her two years at Florida.

**At Florida: 2008-09 Season:** Saw time in 31 games with five starts • averaged 4.1 points per game • tallied 23 steals and 31 assists • knocked down .455 percent (10 of 22) of her three pointers • snagged 40 total rebounds • scored points in 21 games, including eight points in the team's first round NCAA Tournament 70-57 win over Temple • averaged 15.2 minutes a contest • named to SEC Freshman Academic Honor Roll.

**High School:** Played for four seasons at Grimsley High School in Greensboro, N.C. • earned four letters • named to All-Conference team • team won conference and tournament championships • named to All-Area team • named Most Outstanding Player of 2007 North Carolina 4-A State Championship game • scored 33 points in title game • led team to 29-1 record in senior year while averaging team-best 16.2 points per game • played in North Carolina versus South Carolina game, scoring 12 points • also competed in track, qualifying for regional's in the 4x200m relay and the 200m dash • earned honor roll status.

## 2012-13 Game-by-Game

Date	Opponent	FG-A	3FG-A	FT-A	O-D-R	PF	A	T	B	S	Pts.	Min.
11/9	Sam Houston State	5-14	0-3	4-5	4-2-6	1	2	2	1	2	14	28
11/11	Georgetown	4-7	4-6	2-2	0-2-2	4	2	1	0	1	14	32
11/14	at Duquesne	2-6	0-1	3-4	0-2-2	2	3	4	0	2	7	31
11/20	Providence	1-3	0-0	0-0	1-3-4	1	2	2	0	2	2	26
11/28	Saint Bonaventure	0-4	0-1	2-2	1-0-1	0	1	2	0	0	2	14
12/5	at Rhode Island	1-8	0-2	0-0	2-2-4	2	1	2	0	1	2	17
12/9	Princeton	0-6	0-1	0-0	0-0-0	0	0	3	0	0	0	11
12/20	Maryland	1-3	0-1	0-0	0-0-0	1	3	1	0	1	2	20
12/23	at Monmouth	2-4	1-1	2-2	1-2-3	2	2	0	1	1	7	17
12/29	vs. Villanova	3-9	1-3	0-0	0-0-0	1	3	1	0	1	7	22
12/30	vs. Duquesne	1-3	0-1	1-2	0-2-2	0	1	2	0	1	3	24
1/2	at St. John's	2-6	1-2	1-2	2-0-2	4	1	1	1	1	6	20
1/10	George Mason	1-4	0-1	3-4	1-0-1	3	2	1	0	1	5	18
1/13	at Old Dominion											
1/15	at Northeastern											
1/20	Towson											
1/24	UNCW											
1/27	at Drexel											
1/29	Northeastern											
1/31	at Georgia State											
2/3	Hofstra											
2/7	at Towson											
2/10	at James Madison											
2/14	Old Dominion											
2/17	at William & Mary											
2/19	at George Mason											
2/24	James Madison											
2/28	at Hofstra											
3/3	Drexel											
3/6	Georgia State											

## Season/Career Highs

	2012-13	Career
Points	14, 2x vs. Georgetown, 11/11	15, twice
Field Goals	5 vs. Sam Houston State, 11/9	7 vs. Old Dominion, 3/9/12
Field Goal Att.	14 vs. Sam Houston State, 11/9	15 at Maryland, 12/29/11
3-pt. Field Goals	4 vs. Georgetown, 11/11	same
3-pt. Field Goal Att.	6 vs. Georgetown, 11/11	9 vs Penn State, 11/17/11
Free Throws	4 vs. Sam Houston State, 11/9	6 vs. Penn State 11/17/11
Free Throw Att.	5 vs. Sam Houston State, 11/9	6 vs. Penn State, 11/17/11
Rebounds	6 vs. Sam Houston State, 11/9	same
Assists	3, 3x vs. Villanova, 12/29	9 at Georgia State, 2/12/12
Blocks	1, 3x at St. John's, 1/2	1, four times
Steals	2, 3x vs. Providence, 11/20	3, twice
Minutes	32 vs. Georgetown, 11/11	36 at Maryland, 12/29/11

## Trumae Lucas at Delaware

Year	GP/GS	Min.	Avg.	FG-FGA	FG%	3FG-3FGA	3FG%	FT-FTA	FT%	OR	DR	Tot	Avg.	PF	FO	A	TO	B	S	Pts	Avg.
2011-12	33/32	876	26.5	82-251	.327	15-60	.250	45-56	.804	19	51	70	2.1	48	0	112	71	2	35	224	6.8
2012-13	13/5	280	21.5	23-77	.299	7-23	.304	18-23	.783	12	15	27	2.1	21	0	23	22	3	14	71	5.5
<b>Totals</b>	<b>48/37</b>	<b>1156</b>	<b>24.1</b>	<b>105-328</b>	<b>.320</b>	<b>22-83</b>	<b>.265</b>	<b>63-79</b>	<b>.797</b>	<b>31</b>	<b>66</b>	<b>97</b>	<b>2.0</b>	<b>69</b>	<b>0</b>	<b>135</b>	<b>93</b>	<b>5</b>	<b>49</b>	<b>295</b>	<b>6.1</b>



# LAUREN CARRA



Senior • Guard • 5-9  
Dunmore, Pa. • Dunmore

**2012-13 Season:** Presason All-CAA second team selection • currently ranked fourth in Blue Hen history with 144 three-pointers made, 11th with a 31.1 three-point field goal percentage, 10th with 3,166 minutes played, 18th with 232 free throws made, tied for 18th with 319 free throws attempted, tied for 15th with 111 games played, 20th with 1,046 career points and 22nd with a 72.7 free throw percentage • National 5 & 10 Best of the Blue Hens Athlete of the Week (Dec. 3) • CAA Player of the Week and College Sports Madness CAA Player of the Week for the week of Dec. 10 • saw a career-high 43 minutes of play in the Hens' 60-59 overtime victory at St. John's (1/2) • dished out 200th career assist against Duquesne (12/30) in the Dartmouth Blue Sky Classic • became the 23rd player in UD women's basketball history to collect 1,000 career points with a 16-point performance against ninth-ranked Maryland (12/20); also recorded 3,000 career minute and 300th career defensive rebound against the Terps • provided game heroics against Princeton (12/9) after knocking down a running jumper off the glass with two seconds remaining to finish a 59-58 comeback win also collected a season-high six assists and three steals against the Tigers • moved to 23rd all-time on the UD scoring list after a 16-point game at Rhode Island (12/5) • recorded first block of season in addition to five assists, four rebounds and two steals in win over Rams • collected first career double-double with 20 points and a career-high 13 rebounds in a season-high 40 minutes of play against St. Bonaventure (11/28) • also notched a season-high 10 free throws on 15 attempts against the Bonnies • moved to 24th overall in career points with 10-point performance against Providence (11/20) • recorded six assists and three steals, each one shy of career-highs, against Providence (11/20) • saw season-high 35 minutes of play with 15 field goals attempted and three assists at Duquesne (11/14) • led UD with 19 points and made a career-high 10 three-point attempts in 33 minutes played vs. Georgetown (11/11) • became 33rd Blue Hen to break 100-plus career games in season opener against Sam Houston State (11/9); scored 12 points and grabbed three rebounds against the Bearkats.

**2011-12 Season:** One of four players to start all 32 games • ranked second on the team with 4.7 rebounds per game and fifth with 8.7 points per game • shot 52.8 percent (102 of 193) from the field, the second highest percentage on the squad • averaged 25.9 minutes per game • reached double figures 13 times on the year • scored 12 points and pulled down six rebounds at Boston University (11/30) • scored 10 points at Penn (12/7) • poured in 12 points while grabbing five rebounds at Howard (12/22) • scored 11 points and collected seven rebounds at UNCW (1/2) • recorded 14 points and nine rebounds during the win at William & Mary (1/7) • notched 16 points and a season-high 11 rebounds to post first career double-double against Old Dominion (1/11) • recorded second double-double in as many games with 13 points and a season-high 11 boards versus VCU (1/14) • scored 14 points on 7 of 10 shooting at George Mason (1/18) • scored 10 points during the win over Towson (1/23) • scored eight points and grabbed a team-high eight rebounds against UNCW (2/8) • tied his career-high with 18 points and hit all eight of his free throw attempts during the overtime win at Georgia State (2/11) • contributed 12 points and seven rebounds at Towson (2/22) • scored 12 points on 6 of 6 shooting from the field during the win over Northeastern (2/25) • scored 14 points and grabbed five rebounds during the CAA Tournament First Round win over Towson (3/2).

**2010-11 Season:** Played and started all 34 games, (only player to start every game) • third team All-Colonial Athletic Association selection • earned Blue Hen Basketball Club Outstanding Achievement award • led Hens with 85 assists and 48 three-pointers made, and ranked second with 10.8 ppg • ranked ninth in CAA with a 73.8 free throw %, 11th with a 34.0 three-point %, and 12th with 1.4 three-pointers made per game • her 48 three-pointers made are fourth most in a UD single season • scored career-high 29 points vs. Hofstra (1/2) • grabbed a career-high nine rebounds at Penn State (12/19) • handed out career-high seven assists at Hofstra (1/30).

**2009-10 Season:** Saw action in 31 of the Blue Hens' contests • ranked third on the team with 6.0 ppg and 30 steals for the Hens • posted eight double-digit performances throughout the season • was named to Coors Rocky Mountain Invitational All-Tournament Team • named Army ROTC Best of the Blue Hens Athlete of the Week on Nov. 30.

**High School:** First team All-State Class AA selection as senior after earning second team honors as a junior and third team honors as a sophomore • scored 2,117 points during her career • averaged 22 ppg as a senior • had jersey retired at Dunmore High School • led Dunmore to a 104-13 record, including a 55-game conference win streak • Division II Lackawanna League Player of the Year in 2007/2008 • three-time All-Region and All-Division First Team selection • led Dunmore to three straight District Championships.

## 2012-13 Game-by-Game

Date	Opponent	FG-A	3FG-A	FT-A	O-D-R	PF	A	T	B	S	Pts.	Min.
11/9	Sam Houston State	5-10	2-5	0-0	1-2-3	4	1	3	0	2	12	19
11/11	Georgetown	5-14	2-10	7-13	4-5-9	1	1	2	0	0	19	33
11/14	at Duquesne	5-15	1-6	1-3	1-5-6	5	3	3	0	1	12	35
11/20	Providence	4-14	2-6	0-0	4-1-5	4	6	1	0	3	10	31
11/28	Saint Bonaventure	4-12	2-6	10-15	0-13-13	3	2	2	0	0	20	40
12/5	at Rhode Island	6-12	2-5	2-4	1-3-4	3	5	2	1	2	16	36
12/9	Princeton	5-16	1-5	4-4	0-6-6	4	3	2	0	0	15	26
12/20	Maryland	6-13	2-6	2-3	0-6-6	3	2	4	0	0	16	34
12/23	at Monmouth	4-9	0-4	0-0	1-6-7	2	3	4	0	1	8	26
12/29	vs. Villanova	5-10	0-3	1-1	0-6-6	2	2	6	0	0	11	27
12/30	vs. Duquesne	1-4	1-2	4-4	1-6-7	2	1	4	0	0	7	30
1/2	at St. John's	3-12	1-3	1-1	0-2-2	3	1	3	0	0	8	43
1/10	George Mason	1-7	0-2	0-0	0-3-3	1	0	3	0	1	2	24
1/13	at Old Dominion											
1/15	at Northeastern											
1/20	Towson											
1/24	UNCW											
1/27	at Drexel											
1/29	Northeastern											
1/31	at Georgia State											
2/3	Hofstra											
2/7	at Towson											
2/10	at James Madison											
2/14	Old Dominion											
2/17	at William & Mary											
2/19	at George Mason											
2/24	James Madison											
2/28	at Hofstra											
3/3	Drexel											
3/6	Georgia State											

## Season/Career Highs

	2012-13	Career
Points	20 vs. St. Bonaventure, 11/28	29 vs. Hofstra, 1/2/11
Field Goals	6, 2x vs. Maryland, 12/20	7, twice
Field Goal Att.	15 vs. Duquesne, 11/14	19 at Georgia State, 1/23/11
3-pt. Field Goals	2, 6x vs. Maryland, 12/20	4, eight times
3-pt. Field Goal Att.	10 vs. Georgetown, 11/11	9 at Towson, 1/19/12
Free Throws	10 vs. St. Bonaventure, 11/28	14 vs. Hofstra, 1/2/11
Free Throw Att.	15 vs. St. Bonaventure, 11/28	15, twice
Rebounds	13 vs. St. Bonaventure, 11/28	13 vs. St. Bonaventure, 11/28/12
Assists	6 vs. Providence, 11/20	7 at Hofstra, 1/3/11
Blocks	1 at Rhode Island, 12/5	2 at UNCW, 2/2/12
Steals	3 vs. Providence, 11/20	4 at Wake Forest, 12/11/11
Minutes	43 at St. John's, 1/2	43 at St. John's, 1/2/13

## Lauren Carra at Delaware

Year	GP/GS	Min.	Avg.	FG-FGA	FG%	3FG-3FGA	3FG%	FT-FTA	FT%	OR	DR	Tot	Avg.	PF	FO	A	TO	B	S	Pts	Avg.
2009-10	31/14	680	21.9	58-175	.331	29-99	.293	40-60	.667	8	54	62	2.0	51	1	36	74	1	30	185	6.0
2010-11	34/34	1123	33.0	113-320	.353	48-141	.340	93-126	.738	24	96	120	3.5	85	0	85	131	3	39	367	10.8
2011-12	33/32	959	29.1	110-281	.391	51-160	.319	67-85	.788	17	113	130	3.9	76	1	50	62	7	30	338	10.2
2012-13	13/13	404	31.1	54-148	.365	16-63	.254	32-48	.667	13	64	77	5.9	37	1	30	39	1	10	156	12.0
<b>Totals</b>	<b>111/93</b>	<b>3166</b>	<b>28.5</b>	<b>335-924</b>	<b>.363</b>	<b>144-463</b>	<b>.311</b>	<b>232-319</b>	<b>.727</b>	<b>62</b>	<b>327</b>	<b>389</b>	<b>3.5</b>	<b>249</b>	<b>3</b>	<b>201</b>	<b>306</b>	<b>12</b>	<b>109</b>	<b>1,046</b>	<b>9.4</b>





# JADE CLARK



**Freshman • Guard/Forward • 6-0**  
**Ashburn, Va. • St. John's College H.S. (D.C.)**

**2012-13 Season:** Saw a career-high three minutes of action in team's conference opening win (62-27) over George Mason (1/10) • did not suit up against ninth-ranked Maryland (12/20) with an abdominal injury • played two minutes and missed her only field goal attempt during the season-opening victory over Sam Houston State (11/9).

**High School:** Four-year member and two-year starter at St. John's College High School in Washington, D.C. • led St. John's to the 2011 WCAC and City Title championships • named All-WCAC honorable mention as a junior • member of National Honor Society • honor roll student.

### 2012-13 Game-by-Game

Date	Opponent	FG-A	3FG-A	FT-A	O-D-R	PF	A	T	B	S	Pts.	Min.
11/9	Sam Houston State	0-1	0-0	0-0	0-0-0	0	0	0	0	0	0	2
11/11	Georgetown				DNP - CD							
11/14	at Duquesne				DNP - CD							
11/20	Providence				DNP - CD							
11/28	Saint Bonaventure				DNP - CD							
12/5	at Rhode Island	0-0	0-0	0-0	0-0-0	0	0	0	0	0	0	1
12/9	Princeton				DNP - CD							
12/20	Maryland				DNP - Abdomen							
12/23	at Monmouth	0-0	0-0	0-0	0-0-0	0	0	0	0	0	0	2
12/29	vs. Villanova				DNP - CD							
12/30	vs. Duquesne				DNP - CD							
1/2	at St. John's				DNP - CD							
1/10	George Mason	0-0	0-0	0-0	0-0-0	0	0	1	0	0	0	3
1/13	at Old Dominion											
1/15	at Northeastern											
1/20	Towson											
1/24	UNCW											
1/27	at Drexel											
1/29	Northeastern											
1/31	at Georgia State											
2/3	Hofstra											
2/7	at Towson											
2/10	at James Madison											
2/14	Old Dominion											
2/17	at William & Mary											
2/19	at George Mason											
2/24	James Madison											
2/28	at Hofstra											
3/3	Drexel											
3/6	Georgia State											

### Season/Career Highs

	2012-13	Career
Points	n/a	same
Field Goals	n/a	same
Field Goal Att.	1 vs. Sam Houston State, 11/9	same
3-pt. Field Goals	n/a	same
3-pt. Field Goal Att.	n/a	same
Free Throws	n/a	same
Free Throw Att.	n/a	same
Rebounds	n/a	same
Assists	n/a	same
Blocks	n/a	same
Steals	n/a	same
Minutes	3 vs. George Mason, 1/10	same

### Jade Clark at Delaware

Year	GP/GS	Min.	Avg.	FG-FGA	FG%	3FG-3FGA	3FG%	FT-FTA	FT%	OR	DR	Tot	Avg.	PF	FO	A	TO	B	S	Pts	Avg.
2012-13	4/0	8	2.0	0-1	.000	0-0	---	0-0	---	0	0	0	---	0	0	0	1	0	0	0	0.0
<b>Totals</b>	<b>4/0</b>	<b>8</b>	<b>2.0</b>	<b>0-1</b>	<b>.000</b>	<b>0-0</b>	<b>---</b>	<b>0-0</b>	<b>---</b>	<b>0</b>	<b>0</b>	<b>0</b>	<b>---</b>	<b>0</b>	<b>0</b>	<b>0</b>	<b>1</b>	<b>0</b>	<b>0</b>	<b>0</b>	<b>0.0</b>



# JOY CARACCIOLO



**Sophomore (R) • Forward • 6-1**

**Manassas, Va. • Stonewall Jackson • Boston College**

---

**2012-13 Season:** Will sit out this season per NCAA transfer regulations after transferring to Delaware from Boston College over the summer • will have three years of eligibility remaining, beginning in 2013-14.

**At Boston College: 2011-12 Season:** Appeared in all 30 games for the Eagles, making nine starts and averaging 17.6 minutes per contest • contributed 4.8 points and 3.0 rebounds per game • shot 43.4 percent from the field • ranked second on the team with 27 steals • reached double figures during five games • scored a season-high 13 points in a loss at Saint Joseph's on Dec. 29 • narrowly missed a double-double with 10 points and a season-high nine rebounds in a win over Massachusetts on Dec. 7.

**High School:** Played for head coach Nsonji White at Stonewall Jackson High School • averaged 21 points, 12 rebounds, three steals and four blocks a game as a senior • named to Virginia's All-State, All-District, and All-Region first teams • conference and region Player of the Year as a senior • earned Virginia All-State honorable mention nod as a junior • placed second in the shot put at the Virginia State Track Meet • named first team All-State in track as a junior and senior • honor roll student.



# STEPHANIE LEON



**Sophomore • Center • 6-4**  
**Northport, N.Y. • Northport**

**2012-13 Season:** Played a career-high 21 minutes in conference opening win (61-27) over George Mason (1/10) in addition to tying career-highs of seven rebounds and two blocked shots • posted seven career rebounds and 100th career minute played in championship game of the Blue Sky Classic against Duquesne (12/30) • in team's 82-53 win at Monmouth (12/22), tied career-high five rebounds in addition to tying a season-high from the charity stripe (1-2) • tied career-high four points and added career-high five rebounds and two blocks in 16 minutes of play at Duquesne (11/14) • grabbed three rebounds while adding a block and a steal during the season-opening victory over Sam Houston State (11/9) • collected two rebounds in one minute of action vs. Georgetown (11/11) • recorded just one field goal attempt in eight minutes of play against Providence (11/20) • tallied two points with two rebounds in three minutes of action against St. Bonaventure (11/28) • marked first career free throw in win at Rhode Island (12/5) in addition to two rebounds in four minutes of action against the Rams.

**2011-12 Season:** Appeared in 10 games for the Blue Hens, playing 44 total minutes • totaled eight points and 11 rebounds on the year • recorded two points and two rebounds during her collegiate debut in the win over Rhode Island (11/11) • grabbed three rebounds, scored two points, and added a block during the victory vs. Yale (12/5) • scored four points and grabbed two rebounds during the win vs. UNCW (1/12) • pulled down two boards during the victory at Georgia State (2/12) • totaled two rebounds and one block during the CAA Tournament • named to CAA Academic Honor Roll.

**High School:** Two-sport athlete in basketball and volleyball • four year member of the basketball squad and two year volleyball player and Northport High School on Long Island • played center all four years for Richard Castellano • helped squad to a 19-1 record in 2010-11 and a League II Championship • named to all-academic, All-Suffolk County and League II teams • team went 15-2 in her junior season while she earned All-Suffolk County and League II Team honors • won four varsity letters in basketball at Northport and was a member of the Long Island Lutheran Middle and High School teams as an eighth grader • member of the National Honor Society and World Language Honor Society • served as Future Educators of America president • landed on the honor roll every year.

## 2012-13 Game-by-Game

Date	Opponent	FG-A	3FG-A	FT-A	O-D-R	PF	A	T	B	S	Pts.	Min.
11/9	Sam Houston State	0-4	0-0	0-0	2-1-3	3	0	1	1	1	0	9
11/11	Georgetown	0-0	0-0	0-0	1-1-2	0	0	0	0	0	0	1
11/14	at Duquesne	2-3	0-0	0-0	0-5-5	4	0	0	2	0	4	16
11/20	Providence	0-1	0-0	0-0	0-0-0	0	0	0	0	0	0	8
11/28	Saint Bonaventure	1-3	0-0	0-0	2-0-2	0	0	0	0	0	2	3
12/5	at Rhode Island	0-0	0-0	1-2	0-2-2	1	0	0	0	0	1	4
12/9	Princeton	0-0	0-0	0-0	0-0-0	0	0	0	0	0	0	1
12/20	Maryland	0-0	0-0	0-0	0-0-0	0	0	0	0	0	0	1
12/23	at Monmouth	1-2	0-0	1-2	2-3-5	1	0	0	0	0	3	6
12/29	vs. Villanova	0-0	0-0	0-0	0-0-0	0	0	0	0	0	0	1
12/30	vs. Duquesne	0-1	0-0	0-0	2-5-7	3	0	1	1	0	0	15
1/2	at St. John's	0-0	0-0	0-0	0-0-0	0	0	0	1	1	0	5
1/10	George Mason	1-2	0-0	1-2	1-6-7	2	0	1	2	0	3	21
1/13	at Old Dominion											
1/15	at Northeastern											
1/20	Towson											
1/24	UNCW											
1/27	at Drexel											
1/29	Northeastern											
1/31	at Georgia State											
2/3	Hofstra											
2/7	at Towson											
2/10	at James Madison											
2/14	Old Dominion											
2/17	at William & Mary											
2/19	at George Mason											
2/24	James Madison											
2/28	at Hofstra											
3/3	Drexel											
3/6	Georgia State											

## Season/Career Highs

	2012-13	Career
Points	4 vs. Duquesne, 11/14	4, two times
Field Goals	2 vs. Duquesne, 11/14	2, two times
Field Goal Att.	4 vs. Sam Houston State, 11/9	5 vs. Yale, 12/5/11
3-pt. Field Goals	n/a	same
3-pt. Field Goal Att.	n/a	same
Free Throws	1, 3x vs. George Mason, 1/10	same
Free Throw Att.	2, 3x vs. George Mason, 1/10	same
Rebounds	7, 2x vs. George Mason, 1/10	same
Assists	n/a	same
Blocks	2, 2x vs. George Mason, 1/10	same
Steals	1, 2x at St. John's, 1/2	same
Minutes	21 vs. George Mason, 1/10	same

## Stephanie Leon at Delaware

Year	GP/GS	Min.	Avg.	FG-FGA	FG%	3FG-3FGA	3FG%	FT-FTA	FT%	OR	DR	Tot	Avg.	PF	FO	A	TO	B	S	Pts	Avg.
2011-12	10/0	44	4.4	4-13	.308	0-0	---	0-0	---	4	7	11	1.1	5	0	0	4	2	0	8	0.8
2012-13	13/0	91	7.0	5-16	.313	0-0	---	3-6	.500	10	23	33	2.5	15	0	0	3	7	2	13	1.0
<b>Totals</b>	<b>23/0</b>	<b>135</b>	<b>5.9</b>	<b>9-29</b>	<b>.310</b>	<b>0-0</b>	<b>---</b>	<b>3-6</b>	<b>.500</b>	<b>14</b>	<b>30</b>	<b>44</b>	<b>1.9</b>	<b>20</b>	<b>0</b>	<b>0</b>	<b>7</b>	<b>9</b>	<b>2</b>	<b>21</b>	<b>0.9</b>



# CHELSEA CRAIG



**Junior • Forward • 6-2**  
**Rockville, Md. • Wootton**

**2012-13 Season:** Serving as team captain for the second consecutive season along with Elena Delle Donne • saw season-high two minutes of play with one rebound in conference opening win (62-27) over George Mason (1/10) • collected first rebound of season in one minute of play in team's 82-53 win at Monmouth (12/22) in lone game of season.

**2011-12 Season:** Served as team captain along with Vanessa Kabongo and Elena Delle Donne • appeared in four games for the Blue Hens • grabbed two rebounds during the season-opening win over Rhode Island (11/11) • pulled down two rebounds and added a steal in the win against Yale (12/5) • played one minute during the victory over Towson (1/19) • grabbed a rebound in the CAA Tournament Semifinal win over UNCW (3/10) • earned the Team Sportsmanship Award for the second consecutive season • named to CAA Honorable Mention All-Academic Team and to CAA Academic Honor Roll.

**2010-11 Season:** Appeared in 10 games for the Blue Hens • contributed four points and four rebounds on the year • saw first career action against Princeton (12/1) • played in back-to-back games against Vanderbilt (12/29) and Alcorn State (12/30) at Hilton Garden Inn Hokie Classic • scored first career points against Alcorn State while also recording two rebounds, a block and a steal in seven minutes • recorded two points and a rebound during coach Martin's record-setting 267th win against Northeastern (1/6) • grabbed one rebound and blocked a shot during the win over Towson (3/2) • earned Team Sportsmanship Award • named Colonial Athletic Association All-Academic honorable mention.

**2009-10 Season:** Did not appear in any games for the Blue Hens and redshirted the season.

**High School:** First Team All-Montgomery County selection as a senior and earned second team honors as a junior • First Team Montgomery County Senior All-Star Team pick • led Thomas S. Wootton High School to the regional semifinals during her final three years and to the regional quarterfinals as a freshman • Wootton went 73-22 during her four seasons • recorded 990 career rebounds (10.3 avg.) and 745 career points (7.8 avg.) • averaged 14.5 points and 8.9 rebounds as a senior • appeared in 2009 McDonald's Classic Roundball All-Star Game • earned Scholar Athlete Award all four years of high school • member of National Honor Society • earned Foreign Language Excellence Award in Spanish • earned Global Achievement Award for Science, Technology and Research Signature (STARS) program.

## 2012-13 Game-by-Game

Date	Opponent	FG-A	3FG-A	FT-A	O-D-R	PF	A	T	B	S	Pts.	Min.
11/9	Sam Houston State				DNP - CD							
11/11	Georgetown				DNP - CD							
11/14	at Duquesne				DNP - CD							
11/20	Providence				DNP - CD							
11/28	Saint Bonaventure				DNP - CD							
12/5	at Rhode Island				DNP - CD							
12/9	Princeton				DNP - CD							
12/20	Maryland				DNP - CD							
12/23	at Monmouth	0-0	0-0	0-0	1-0-1	0	0	0	0	0	0	1
12/29	vs. Villanova				DNP - CD							
12/30	vs. Duquesne				DNP - CD							
1/2	at St. John's				DNP - CD							
1/10	George Mason	0-0	0-0	0-0	1-0-1	0	0	0	0	0	0	2
1/13	at Old Dominion											
1/15	at Northeastern											
1/20	Towson											
1/24	UNCW											
1/27	at Drexel											
1/29	Northeastern											
1/31	at Georgia State											
2/3	Hofstra											
2/7	at Towson											
2/10	at James Madison											
2/14	Old Dominion											
2/17	at William & Mary											
2/19	at George Mason											
2/24	James Madison											
2/28	at Hofstra											
3/3	Drexel											
3/6	Georgia State											

## Season/Career Highs

	2012-13	Career
Points	n/a	2, twice
Field Goals	n/a	1, twice
Field Goal Att.	n/a	1, three times
3-pt. Field Goals	n/a	n/a
3-pt. Field Goal Att.	n/a	n/a
Free Throws	n/a	n/a
Free Throw Att.	n/a	1 at Northeastern, 1/6/11
Rebounds	1, 2x vs. George Mason, 1/10	2, three times
Assists	n/a	n/a
Blocks	n/a	1, twice
Steals	n/a	1, twice
Minutes	2 vs. George Mason, 1/10	7 vs. Alcorn State, 12/30/10

## Chelsea Craig at Delaware

Year	GP/GS	Min.	Avg.	FG-FGA	FG%	3FG-3FGA	3FG%	FT-FTA	FT%	OR	DR	Tot	Avg.	PF	FO	A	TO	B	S	Pts	Avg.
2010-11	10/0	22	2.2	2-2	1.000	0-0	---	0-1	.000	1	3	4	0.4	1	0	0	2	2	1	4	0.4
2011-12	4/0	10	2.5	0-1	---	0-0	---	0-0	---	2	3	5	1.3	1	0	0	2	0	1	0	0.0
2012-13	2/0	3	1.5	0-0	---	0-0	---	0-0	---	2	0	2	1.0	0	0	0	0	0	0	0	0.0
<b>Totals</b>	<b>16/0</b>	<b>35</b>	<b>2.2</b>	<b>2-3</b>	<b>.667</b>	<b>0-0</b>	<b>---</b>	<b>0-1</b>	<b>.000</b>	<b>5</b>	<b>6</b>	<b>11</b>	<b>0.7</b>	<b>2</b>	<b>0</b>	<b>0</b>	<b>4</b>	<b>2</b>	<b>2</b>	<b>4</b>	<b>0.3</b>



**UNIVERSITY OF DELAWARE WOMEN'S BASKETBALL GAME-BY-GAME STATISTICS**

	PTS	FG	FG%	3FG	3FG%	FT	FT%	O-D-R	PF	A	T	B	S
Sam Houston State	31	11-51	21.6	1-13	7.7	8-11	72.7	14-24-38	16	6	21	4	4
Delaware	63	22-66	33.3	3-14	21.4	16-25	64.0	24-27-51	16	8	12	2	10
Georgetown	62	20-50	40.0	4-16	25.0	18-23	78.3	11-22-33	21	8	20	1	10
Delaware	56	17-47	36.2	8-22	36.4	14-25	56.0	13-22-35	17	11	22	3	6
Delaware	47	18-51	35.3	1-9	11.1	10-15	66.7	13-26-39	19	11	21	4	6
Duquesne	51	19-60	31.7	3-16	18.8	10-15	66.7	18-23-41	14	10	16	5	12
Providence	46	17-56	30.4	2-15	13.3	10-14	71.4	13-28-41	9	7	17	2	2
Delaware	64	28-66	42.4	4-11	36.4	4-10	40.0	13-27-40	12	15	10	2	9
St. Bonaventure	58	21-54	38.9	7-14	50.0	9-15	60.0	12-25-37	27	8	13	2	2
Delaware	68	19-53	35.8	3-8	37.5	27-41	65.9	18-24-42	13	9	8	4	2
Delaware	57	24-60	40.0	2-8	25.0	7-12	58.3	16-26-42	17	15	10	4	10
Rhode Island	40	13-47	27.7	2-4	50.0	12-19	63.2	13-23-36	15	10	17	3	3
Princeton	58	23-55	41.8	3-18	16.7	9-15	60.0	10-33-43	16	11	18	3	8
Delaware	59	21-63	33.3	2-10	20.0	15-20	75.0	12-26-38	13	8	11	3	6
#9/8 Maryland	69	26-62	41.9	7-18	38.9	10-10	100.0	13-31-44	14	19	16	4	6
Delaware	53	20-61	32.8	4-10	40.0	9-14	64.3	12-23-35	10	9	13	2	4
Delaware	82	29-59	49.2	6-15	40.0	18-21	85.7	15-29-44	10	14	10	5	7
Monmouth	53	18-59	30.5	4-15	26.7	13-15	86.7	14-18-32	16	8	13	2	4
Villanova	45	17-59	28.8	6-33	18.2	5-8	62.5	14-24-38	14	9	14	2	7
Delaware	59	23-58	39.7	2-11	18.2	11-12	91.7	13-28-41	8	8	11	3	8
Duquesne	45	17-60	28.3	4-21	19.0	7-14	50.0	12-20-32	18	7	15	6	9
Delaware	60	19-46	41.3	3-9	33.3	19-22	86.4	9-36-45	13	10	19	5	6
Delaware	OT 60	19-58	32.8	4-8	50.0	18-24	75.0	18-30-48	19	6	19	6	7
St. John's	59	19-67	28.4	2-8	25.0	19-28	67.9	24-24-48	18	11	12	7	14
George Mason	27	8-48	16.7	3-7	42.9	8-13	61.5	12-15-27	16	5	13	4	4
Delaware	62	22-52	42.3	4-15	26.7	14-17	82.4	16-31-47	14	13	11	3	8
Delaware Old Dominion													
Delaware Northeastern													
Towson Delaware													
UNCW Delaware													
Delaware Drexel													
Northeastern Delaware													
Delaware Georgia State													
Hofstra Delaware													
Delaware Towson													
Delaware James Madison													
Old Dominion Delaware													
Delaware William & Mary													
Delaware George Mason													
James Madison Delaware													
Delaware Hofstra													
Drexel Delaware													
Georgia State Delaware													



Sam Houston State 31 • 0-1

#	Player	Total		3-Ptr		Rebounds		PF	TP	A	TO	Blk	Stl	Min	
		FG-FGA	FG-FGA	FT-FTA	Off Def Tot										
10	Martin, Britni	f	5-14	1-6	5-6	2	0	2	1	16	1	1	0	2	38
30	Thomas, Sequeena	f	1-10	0-0	0-0	1	11	12	4	2	1	4	2	0	20
03	Johnson, Jasmine	g	1-9	0-2	0-0	1	3	4	2	2	2	4	0	0	38
25	Gonzalez, Victoria	g	0-0	0-0	0-0	2	0	2	2	0	0	2	0	0	10
34	Smith, Chanice	g	0-4	0-3	0-0	2	0	2	1	0	1	4	0	0	25
01	Clavelle, Kaysean	g	0-0	0-0	0-0	1	0	1	1	0	0	1	0	0	8
04	Anderson, Jasmin	g	0-0	0-0	0-0	0	0	0	0	0	0	0	0	0	1
12	Beadle, Angela	g	3-10	0-1	3-5	2	3	5	0	9	0	2	1	0	24
14	Davis, Clarke	g	0-0	0-0	0-0	1	1	2	1	0	0	0	0	0	7
21	Wiley, Jazmin	g	0-1	0-0	0-0	0	3	3	0	0	0	2	0	1	10
23	Barnes, Amanda	g	0-2	0-1	0-0	1	0	1	1	0	1	1	0	0	10
33	Carter, Nyha	g	1-1	0-0	0-0	0	0	0	3	2	0	0	0	1	9
Team						1	3	4							
Totals			11-51	1-13	8-11	14	24	38	16	31	6	21	4	4	200

FG % 1st Half: 6-23 26.1% 2nd half: 5-28 17.9% Game: 11-51 21.6%  
 3FG % 1st Half: 1-6 16.7% 2nd half: 0-7 0.0% Game: 1-13 7.7%  
 FT % 1st Half: 3-4 75.0% 2nd half: 5-7 71.4% Game: 8-11 72.7%

Delaware 63 • 1-0

#	Player	Total		3-Ptr		Rebounds		PF	TP	A	TO	Blk	Stl	Min	
		FG-FGA	FG-FGA	FT-FTA	Off Def Tot										
12	Parker, Danielle	f	3-9	0-0	3-7	6	6	12	2	9	0	3	0	3	30
13	Buchanan, Kelsey	f	2-4	0-0	2-2	1	1	2	0	6	0	0	0	0	17
15	Richards, Akeema	g	1-6	0-0	0-0	1	3	4	1	2	4	1	0	0	23
21	Lucas, Trumae	g	5-14	0-3	4-5	4	2	6	1	14	2	2	1	2	28
22	Carra, Lauren	g	5-10	2-5	0-0	1	2	3	4	12	1	3	0	2	19
02	Green, Courtney	g	1-5	1-5	1-2	0	4	4	3	4	0	0	0	0	18
03	May, Jaquetta	g	4-9	0-0	5-7	7	4	11	2	13	0	2	0	2	24
10	Miller, Kayla	g	1-3	0-1	0-0	0	3	3	0	2	1	0	0	0	26
14	Bell, Alecia	g	0-1	0-0	1-2	2	1	3	0	1	0	0	0	0	4
23	Clark, Jade	g	0-1	0-0	0-0	0	0	0	0	0	0	0	0	0	2
33	Leon, Stephanie	g	0-4	0-0	0-0	2	1	3	3	0	0	1	1	1	9
Team						0	0	0							
Totals			22-66	3-14	16-25	24	27	51	16	63	8	12	2	10	200

FG % 1st Half: 9-37 24.3% 2nd half: 13-29 44.8% Game: 22-66 33.3%  
 3FG % 1st Half: 0-10 0.0% 2nd half: 3-4 75.0% Game: 3-14 21.4%  
 FT % 1st Half: 8-10 80.0% 2nd half: 8-15 53.3% Game: 16-25 64.0%

Officials: John Morningstar (R), Kim Waller, Richard Wright  
 Technical fouls: Sam Houston State-None. Delaware-None.  
 Attendance: 1872  
 Pre-Season Women's NIT First Round...Delaware advances to face Georgetown Sunday...UD wins 15th straight home game...May (UD) career-high rebounds, first career double-double...UD fewest points allowed since Feb. 7, 2002 (def. Towson, 66-28)

Score by periods	1st	2nd	Total
Sam Houston State	16	15	31
Delaware	26	37	63



Georgetown 62 • 2-0

#	Player	Total		3-Ptr		Rebounds		PF	TP	A	TO	Blk	Stl	Min	
		FG-FGA	FG-FGA	FT-FTA	Off Def Tot										
11	WHITE, Andrea	f	2-7	0-0	3-4	3	4	7	4	7	2	3	1	3	33
33	HORNE, Brittany	f	0-4	0-1	0-0	3	0	3	2	0	0	1	0	0	12
13	WILSON, Sydney	c	1-4	0-0	0-0	0	1	1	2	2	0	2	0	0	15
14	RODGERS, Sugar	g	11-21	4-11	9-10	1	3	4	4	35	2	7	0	5	35
23	POWELL, Samisha	g	1-5	0-2	0-0	2	5	7	3	2	2	1	0	0	30
00	RAFTU, Ki-Ke	g	0-1	0-0	2-2	0	0	0	0	2	0	1	0	1	10
21	JACKSON, Jasmine	g	4-5	0-1	4-7	1	1	2	2	12	2	2	0	0	22
22	BATTLE, Logan	g	1-3	0-1	0-0	1	3	4	1	2	0	2	0	0	15
35	VITALIS, Dominique	g	0-0	0-0	0-0	0	0	0	1	0	0	0	0	1	3
42	MOORE, Vanessa	g	0-0	0-0	0-0	0	2	2	2	0	0	1	0	0	25
Team						0	3	3							
Totals			20-50	4-16	18-23	11	22	33	21	62	8	20	1	10	200

FG % 1st Half: 10-27 37.0% 2nd half: 10-23 43.5% Game: 20-50 40.0%  
 3FG % 1st Half: 4-11 36.4% 2nd half: 0-5 0.0% Game: 4-16 25.0%  
 FT % 1st Half: 4-5 80.0% 2nd half: 14-18 77.8% Game: 18-23 78.3%

Delaware 56 • 1-1

#	Player	Total		3-Ptr		Rebounds		PF	TP	A	TO	Blk	Stl	Min	
		FG-FGA	FG-FGA	FT-FTA	Off Def Tot										
12	Parker, Danielle	f	5-11	0-0	1-2	2	8	10	2	11	2	3	1	3	37
13	Buchanan, Kelsey	f	0-2	0-0	2-2	0	2	2	2	2	1	2	0	0	11
15	Richards, Akeema	g	1-3	0-0	1-2	0	1	1	2	3	1	1	0	0	20
21	Lucas, Trumae	g	4-7	4-6	2-2	0	2	2	4	14	2	1	0	1	32
22	Carra, Lauren	g	5-14	2-10	7-13	4	5	9	1	19	2	1	0	0	33
02	Green, Courtney	g	0-2	0-1	0-0	0	0	0	0	0	0	3	0	1	6
03	May, Jaquetta	g	0-2	0-0	0-2	4	1	5	4	0	0	4	2	0	29
10	Miller, Kayla	g	2-6	2-5	1-2	0	0	0	2	7	4	6	0	1	31
33	Leon, Stephanie	g	0-0	0-0	0-0	1	1	2	0	0	0	0	0	0	1
Team						2	2	4							
Totals			17-47	8-22	14-25	13	22	35	17	56	11	22	3	6	200

FG % 1st Half: 10-24 41.7% 2nd half: 7-23 30.4% Game: 17-47 36.2%  
 3FG % 1st Half: 2-9 22.2% 2nd half: 6-13 46.2% Game: 8-22 36.4%  
 FT % 1st Half: 8-12 66.7% 2nd half: 6-13 46.2% Game: 14-25 56.0%

Officials: Bill Titus (R), Kathy Lonegran, Shannon Feck  
 Technical fouls: Georgetown-None. Delaware-None.  
 Attendance: 859

Pre-Season WNIT 2nd Round...Delaware is ranked #11 (AP)/#10 (USA Today)...  
 Georgetown advances to WNIT Semifinals...UD has 15-game home winning streak  
 and 18-game regular season winning streak snapped...Sugar Rodgers (GU) sets  
 BCC record for most points by a UD opponent...Parker (UD) 16th double-double.

Score by periods	1st	2nd	Total
Georgetown	28	34	62
Delaware	30	26	56



Delaware 47 • 1-2

#	Player	Total		3-Ptr		Rebounds		PF	TP	A	TO	Blk	Stl	Min	
		FG-FGA	FG-FGA	FT-FTA	Off Def Tot										
12	Parker, Danielle	f	3-8	0-0	5-6	3	5	8	3	11	0	5	1	2	34
03	May, Jaquetta	g	0-1	0-0	0-0	3	1	4	0	0	0	1	0	1	17
15	Richards, Akeema	g	4-11	0-0	1-2	1	2	3	2	9	2	4	0	0	28
21	Lucas, Trumae	g	2-6	0-1	3-4	0	2	2	3	7	3	4	0	2	31
22	Carra, Lauren	g	5-15	1-6	1-3	1	5	6	5	12	3	3	0	1	35
02	Green, Courtney	g	0-1	0-1	0-0	0	0	0	0	0	0	0	0	0	3
10	Miller, Kayla	g	1-2	0-1	0-0	0	0	0	2	2	3	3	0	0	22
13	Buchanan, Kelsey	g	1-2	0-0	0-0	0	0	0	0	2	0	1	1	0	3
14	Bell, Alecia	g	0-2	0-0	0-0	2	3	5	0	0	0	0	0	0	11
33	Leon, Stephanie	g	2-3	0-0	0-0	0	5	5	4	4	0	0	2	0	16
Team						3	3	6							
Totals			18-51	1-9	10-15	13	26	39	19	47	11	21	4	6	200

FG % 1st Half: 9-26 34.6% 2nd half: 9-25 36.0% Game: 18-51 35.3%  
 3FG % 1st Half: 0-4 0.0% 2nd half: 1-5 20.0% Game: 1-9 11.1%  
 FT % 1st Half: 0-1 0.0% 2nd half: 10-14 71.4% Game: 10-15 66.7%

Duquesne 51 • 2-1

#	Player	Total		3-Ptr		Rebounds		PF	TP	A	TO	Blk	Stl	Min	
		FG-FGA	FG-FGA	FT-FTA	Off Def Tot										
10	AGUNBIADIE, Wumi	f	7-19	0-1	3-4	7	5	12	3	17	0	4	1	0	34
13	SZECSTI, Orsi	f	2-7	1-4	2-2	1	3	4	3	7	1	2	0	0	25
12	FLOYD, Jocelyn	g	1-6	0-0	2-2	1	4	5	2	4	1	0	0	7	34
23	NURKIC, Belma	g	4-12	1-5	0-1	3	4	7	1	9	0	2	1	1	29
00	JOHNSON, April	g	3-6	0-2	0-0	0	3	3	2	6	3	3	1	1	24
00	ODISHO, Oditte	g	0-0	0-0	0-0	0	1	1	1	0	1	3	0	2	13
04	JOHNSON, Jose-Ann	g	0-1	0-0	1-2	0	0								



St. Bonaventure 58 • 3-4

#	Player	Total		3-Ptr		Rebounds			PF	TP	A	TO	Blk	Stl	Min
		FG-FGA	FG-FGA	FT-FTA	Off	Def	Tot								
04	ORTEGA, Doris	f	6-15	0-0	1-2	3	1	4	3	13	1	2	0	0	36
03	WALKER, Alaina	g	2-8	0-0	0-2	1	5	6	5	4	2	1	1	2	34
12	ZAHN, Ashley	g	3-8	2-4	2-2	1	4	5	4	10	1	1	0	0	30
13	MC GEE, Jordan	g	1-3	0-0	0-0	1	5	6	4	2	1	1	0	0	21
30	DIXON, CeCe	g	4-10	3-5	3-5	3	2	5	2	14	0	4	0	0	30
01	WILSON, Tatiana	g	0-0	0-0	0-0	0	0	0	3	0	1	0	0	0	7
21	RUETER, Nyla	g	0-0	0-0	0-0	0	0	0	1	0	0	0	0	0	1
33	MICHAEL, Emily	g	2-4	2-4	0-0	0	1	1	0	6	1	2	0	0	20
42	HEALY, Katie	g	3-6	0-1	3-4	1	5	6	5	9	1	2	1	0	21
Team						2	2	4							
Totals			21-54	7-14	9-15	12	25	37	27	58	8	13	2	2	200

FG % 1st Half: 12-28 42.9% 2nd half: 9-26 34.6% Game: 21-54 38.9% Deadball Rebounds 3  
 3FG % 1st Half: 5-7 71.4% 2nd half: 2-7 28.6% Game: 7-14 50.0%  
 FT % 1st Half: 1-2 50.0% 2nd half: 8-13 61.5% Game: 9-15 60.0%

Delaware 68 • 3-2

#	Player	Total		3-Ptr		Rebounds			PF	TP	A	TO	Blk	Stl	Min
		FG-FGA	FG-FGA	FT-FTA	Off	Def	Tot								
12	Parker, Danielle	f	1-6	0-0	3-6	6	2	8	2	5	1	1	1	0	27
03	May, Jaquetta	g	5-8	0-0	2-2	3	1	4	3	12	1	0	2	1	32
15	Richards, Akeema	g	4-11	0-0	2-4	1	2	3	1	10	2	3	0	1	28
21	Lucas, Trumae	g	0-4	0-1	2-2	1	0	1	0	2	1	2	0	0	14
22	Carra, Lauren	g	4-12	2-6	10-15	0	13	13	3	20	2	2	0	0	40
02	Green, Courtney	g	1-1	1-1	0-0	0	0	0	0	3	0	0	0	0	4
10	Miller, Kayla	g	0-1	0-0	6-9	0	1	1	2	6	2	0	0	0	33
13	Buchanan, Kelsey	g	3-7	0-0	2-3	4	3	7	2	8	0	0	1	0	19
33	Leon, Stephanie	g	1-3	0-0	0-0	2	0	2	0	2	0	0	0	0	3
Team						1	2	3							
Totals			19-53	3-8	27-41	18	24	42	13	68	9	8	4	2	200

FG % 1st Half: 8-27 29.6% 2nd half: 11-26 42.3% Game: 19-53 35.8% Deadball Rebounds 5  
 3FG % 1st Half: 1-4 25.0% 2nd half: 2-4 50.0% Game: 3-8 37.5%  
 FT % 1st Half: 8-11 72.7% 2nd half: 19-30 63.3% Game: 27-41 65.9%

Officials: Bryan Brunette, Tom Danaher, Kevin Sparrock  
 Technical fouls: St. Bonaventure-None. Delaware-None.  
 Attendance: 3596  
 Delaware receiving votes in AP Top 25 Poll...Walker fouled out (1:15)...Carra first career double-double...UD wins 2nd straight...UD now 3-1 at home... season high points for Carra, Richards

Score by periods	1st	2nd	Total
St. Bonaventure	30	28	58
Delaware	25	43	68



Delaware 57 • 4-2

#	Player	Total		3-Ptr		Rebounds			PF	TP	A	TO	Blk	Stl	Min
		FG-FGA	FG-FGA	FT-FTA	Off	Def	Tot								
12	Parker, Danielle	f	6-14	0-0	0-0	5	8	13	2	12	2	1	0	0	36
03	May, Jaquetta	g	5-9	0-0	0-1	1	2	3	2	10	1	2	3	0	30
10	Miller, Kayla	g	1-3	0-1	3-4	0	2	2	3	5	4	1	0	0	32
15	Richards, Akeema	g	4-12	0-0	1-1	2	2	4	3	9	2	2	0	3	31
22	Carra, Lauren	g	6-12	2-5	2-4	1	3	4	3	16	5	2	1	2	36
02	Green, Courtney	g	0-0	0-0	0-0	0	0	0	0	0	0	0	0	0	1
13	Buchanan, Kelsey	g	1-2	0-0	0-0	1	1	2	1	2	0	0	0	0	11
14	Bell, Alecia	g	0-0	0-0	0-0	0	0	0	0	0	0	0	0	0	1
21	Lucas, Trumae	g	1-8	0-2	0-0	2	2	4	2	2	1	2	0	1	17
23	Clark, Jade	g	0-0	0-0	0-0	0	0	0	0	0	0	0	0	0	1
33	Leon, Stephanie	g	0-0	0-0	1-2	0	2	2	1	1	0	0	0	0	4
Team						4	4	8							
Totals			24-60	2-8	7-12	16	26	42	17	57	15	10	4	10	200

FG % 1st Half: 11-30 36.7% 2nd half: 13-30 43.3% Game: 24-60 40.0% Deadball Rebounds 2  
 3FG % 1st Half: 0-3 0.0% 2nd half: 2-5 40.0% Game: 2-8 25.0%  
 FT % 1st Half: 6-9 66.7% 2nd half: 1-3 33.3% Game: 7-12 58.3%

Rhode Island 40 • 3-6

#	Player	Total		3-Ptr		Rebounds			PF	TP	A	TO	Blk	Stl	Min
		FG-FGA	FG-FGA	FT-FTA	Off	Def	Tot								
20	CLOUTIER, Emilie	f	3-9	0-0	6-7	1	4	5	4	12	1	6	0	1	34
25	GASPARD, Lara	f	1-1	0-0	0-0	0	0	0	2	2	0	5	0	0	11
01	MELENDEZ, Tayra	g	3-8	1-3	0-0	0	0	0	1	7	2	2	3	0	25
14	WHITTAKER, Teneka	g	1-3	0-0	0-0	0	3	3	3	2	1	1	0	0	27
23	THOMAS, Brianna	g	0-7	0-0	2-2	1	1	2	1	2	1	1	0	0	14
03	WALLACK, Kerry	g	2-6	0-0	0-1	1	1	2	0	4	1	0	0	1	26
05	BOONE, Ajanae	g	0-0	0-0	0-0	0	1	1	0	0	0	0	0	0	3
24	STRAUMANN, Megan	g	2-4	1-1	2-2	0	5	5	0	7	2	2	0	1	23
32	LEWIS, Sydney	g	0-1	0-0	0-0	0	1	1	0	0	0	0	0	0	2
30	JOHNSON, Tati	g	0-0	0-0	0-0	1	0	1	0	0	1	0	0	0	4
34	TABAKMAN, Samantha	g	1-8	0-0	2-7	6	2	8	2	4	1	0	0	0	31
Team						3	5	8							
Totals			13-47	2-4	12-19	13	23	36	15	40	10	17	3	3	200

FG % 1st Half: 5-22 22.7% 2nd half: 8-25 32.0% Game: 13-47 27.7% Deadball Rebounds 2  
 3FG % 1st Half: 2-3 66.7% 2nd half: 0-1 0.0% Game: 2-4 50.0%  
 FT % 1st Half: 4-4 100.0% 2nd half: 8-15 53.3% Game: 12-19 63.2%

Officials: Rodney Creech, Joanne Aldrich, Marissa Whaley  
 Technical fouls: Delaware-None. Rhode Island-None.  
 Attendance: 689

Score by periods	1st	2nd	Total
Delaware	28	29	57
Rhode Island	16	24	40

Points	In	Off	2nd	Fast	Bench
DELAWARE	34	19	15	2	5
URI	18	8	9	2	15

Score tied - 0 times.  
 Lead changed - 0 times.



Princeton 58 • 6-3

#	Player	Total		3-Ptr		Rebounds			PF	TP	A	TO	Blk	Stl	Min
		FG-FGA	FG-FGA	FT-FTA	Off	Def	Tot								
20	Miller, Kate	f	2-5	1-3	0-1	0	2	2	3	5	2	2	0	2	27
32	Helmstetter, Kristen	f	4-9	0-3	1-3	0	9	9	1	9	1	1	1	1	32
43	Bowen, Megan	c	2-2	0-0	2-2	0	0	0	2	6	0	1	0	0	12
11	Dietrick, Blake	g	3-10	1-6	1-2	1	5	6	1	8	4	5	0	0	37
24	Rasheed, Niveen	g	6-12	1-3	2-4	1	8	9	5	15	0	3	0	3	32
12	Berntsen, Amanda	g	0-0	0-0	0-0	1	1	2	1	0	0	1	0	0	3
15	Tarakchian, Annie	g	0-3	0-1	2-2	2	0	2	0	2	0	1	0	0	3
21	Wheatley, Alex	g	4-4	0-0	0-0	2	1	3	2	8	0	4	0	1	17
25	Smith, Mariah	g	2-8	0-1	1-1	1	4	5	1	5	4	0	2	0	29
34	Miller, Michelle	g	0-2	0-1	0-0	0	1	1	0	0	0	0	0	1	8
Team						2	2	4							
Totals			23-55	3-18	9-15	10	33	43	16	58	11	18	3	8	200

FG % 1st Half: 13-28 46.4% 2nd half: 10-27 37.0% Game: 23-55 41.8% Deadball Rebounds 2  
 3FG % 1st Half: 2-10 20.0% 2nd half: 1-8 12.5% Game: 3-18 16.7%  
 FT % 1st Half: 4-7 57.1% 2nd half: 5-8 62.5% Game: 9-15 60.0%

Delaware 59 • 5-2

#	Player	Total		3-Ptr		Rebounds			PF	TP	A	TO	Blk	Stl	Min
		FG-FGA	FG-FGA	FT-FTA	Off	Def	Tot								
12	Parker, Danielle	f	2-4	0-0	0-0	3	4	7	1	4	0	1	0	0	39
03	May, Jaquetta	g	6-11	0-0	3-6	2	3	5	3	15	0	0	0	0	25
10	Miller, Kayla	g	1-3	0-1	0-0	0	0	0	0	2	3	1	0	5	36
15	Richards, Akeema	g	5-16	0-0	3-4	2	5	7	3	13	1	3	0	0	33
22	Carra, Lauren	g	5-16	1-5	4-4	0	6	6	4	15	3	2	0	0	26
02	Green, Courtney	g	1-3	1-3	2-2	1	2	3	0	5	0	0	1	0	10
13	Buchanan, Kelsey	g	1-4	0-0	3-4	2	5	7	2	5	1	1	2	1	19
21	Lucas, Trumae	g	0-6	0-1	0-0	0	0	0	0	0	0	3	0	0	11
33	Leon, Stephanie	g	0-0	0-0	0-0	0	0	0	0	0	0	0	0	0	1
Team						2	1	3							
Totals			21-63	2-10	15-20	12	26	38	13	59	8	11	3	6	200

FG % 1st Half: 9-33 27.3% 2nd half: 12-30 40.0% Game: 21-63 33.3% Deadball Rebounds 2  
 3FG % 1st Half: 1-4 25.0% 2nd half: 1-6 16.7% Game: 2-10 20.0%  
 FT % 1st Half: 6-7 85.7% 2nd half: 9-13 69.2% Game: 15-20 75.0%

Officials: Lawson Newton (R), Shannon Feck, Kevin Dillard  
 Technical fouls: Princeton-None. Delaware-None.  
 Attendance: 4029  
 Delaware RV in AP Top 25 Poll...Delaware wins fourth straight game...Princeton has 3-game win streak snapped...UD has defeated Princeton two straight times and 8 of last 10...Carra game-winner with :02 left...UD 36-9 at home since 2009-10.

Score by periods	1st	2nd	Total
Princeton	32	26	58
Delaware	25	34	59

Points	In	Off	2nd	Fast	Bench
PRIN	30	8	5	2	15
DELAWARE	24	10	9	0	10

Score tied - 6 times.<

Delaware 82, Monmouth 53 • 12/22/12 • West Long Branch, N.J.



Delaware 82 • 6-3

#	Player	Total			Rebounds			PF	TP	A	TO	Blk	Stl	Min	
		FG-FGA	3-PT	FT-FTA	Off	Def	Tot								
11	Delle Donne, Elena	f	10-14	4-5	6-6	2	7	9	1	30	2	1	2	0	24
12	Parker, Danielle	f	4-7	0-0	3-4	1	4	5	2	11	0	0	0	1	25
10	Miller, Kayla	g	1-5	0-2	2-2	0	0	0	2	4	1	0	1	24	
15	Richards, Akeema	g	3-7	0-0	0-0	2	1	3	0	6	1	2	0	0	18
22	Carra, Lauren	g	4-9	0-4	0-0	1	6	7	2	8	3	4	0	1	26
02	Green, Courtney	g	1-4	1-3	0-0	0	0	0	0	3	0	1	2	1	15
03	May, Jaquetta	g	1-1	0-0	1-1	2	1	3	0	3	2	1	0	2	24
13	Buchanan, Kelsey	g	2-3	0-0	0-0	1	0	1	0	4	0	0	0	0	13
14	Bell, Alecia	g	0-3	0-0	3-4	1	0	1	0	3	0	0	0	0	5
21	Lucas, Trumae	g	2-4	1-1	2-2	1	2	3	2	7	2	0	1	1	17
23	Clark, Jade	g	0-0	0-0	0-0	0	0	0	0	0	0	0	0	0	2
33	Leon, Stephanie	g	1-2	0-0	1-2	2	3	5	1	3	0	0	0	0	6
45	Craig, Chelsea	g	0-0	0-0	0-0	1	0	1	0	0	0	0	0	0	1
Team						1	5	6							
Totals			29-59	6-15	18-21	15	29	44	10	82	14	10	5	7	200

FG % 1st Half: 17-28 60.7% 2nd half: 12-31 38.7% Game: 29-59 49.2%  
 3FG % 1st Half: 2-6 33.3% 2nd half: 4-9 44.4% Game: 6-15 40.0%  
 FT % 1st Half: 9-10 90.0% 2nd half: 9-11 81.8% Game: 18-21 85.7%

Monmouth 53 • 2-7

#	Player	Total			Rebounds			PF	TP	A	TO	Blk	Stl	Min	
		FG-FGA	3-PT	FT-FTA	Off	Def	Tot								
32	GADZIALA, Betsy	f	6-12	0-0	2-2	2	4	6	4	14	0	0	0	0	29
45	MARTIN, Abigail	f	0-3	0-0	0-0	2	0	2	2	0	1	2	0	1	17
01	WOMACK, Alysha	g	1-4	0-1	0-0	0	0	0	0	2	1	0	0	1	5
05	SINGER, Gabby	g	3-7	3-6	0-0	0	1	1	0	9	0	3	0	0	27
10	PAALVAST, Chevannah	g	4-10	0-0	3-5	0	1	1	1	11	3	2	0	0	26
03	THIBAUT, Carly	g	0-2	0-1	0-0	1	0	1	3	0	2	0	0	0	18
11	CHAMBERS, Kasey	g	1-5	1-1	0-0	1	1	2	1	3	0	1	0	2	19
12	ALLEN, Adriana	g	0-0	0-0	0-0	1	0	1	0	1	3	0	0	0	8
15	WALKER, Jasmine	g	0-2	0-1	0-0	0	1	1	0	0	0	0	0	0	11
20	LENTINI, Nikki	g	0-5	0-2	0-0	0	0	0	0	0	0	1	0	0	7
21	OFFENBACK, Amanda	g	0-0	0-0	0-0	0	1	1	2	0	0	1	0	0	3
33	SHECHT, Shira	g	1-6	0-3	2-2	1	1	2	2	4	0	0	0	0	15
34	ENGLISH, Sara	g	2-3	0-0	6-6	1	4	5	0	10	0	0	2	0	15
Team						5	3	8							
Totals			18-59	4-15	13-15	14	17	31	16	53	8	13	2	4	200

FG % 1st Half: 11-36 30.6% 2nd half: 7-23 30.4% Game: 18-59 30.5%  
 3FG % 1st Half: 3-8 37.5% 2nd half: 1-7 14.3% Game: 4-15 26.7%  
 FT % 1st Half: 3-4 75.0% 2nd half: 10-11 90.9% Game: 13-15 86.7%

Officials: Gary Schimel, Desiree' Peterkin, Rachelle Jones  
 Technical fouls: Delaware-None. Monmouth-None.  
 Attendance: 710

Score by periods	1st	2nd	Total
Delaware	45	37	82
Monmouth	28	25	53

Last FG - DELAWARE 2nd-05:09, MU 2nd-03:49.  
 Largest lead - DELAWARE by 31 2nd-05:09, MU None.

Score tied - 0 times.  
 Lead changed - 0 times.

Delaware 59, Villanova 45 • 12/29/12 • Hanover, N.H.



Villanova 45 • 9-2

#	Player	Total			Rebounds			PF	TP	A	TO	Blk	Stl	Min	
		FG-FGA	3-PT	FT-FTA	Off	Def	Tot								
01	HOLEMAN, Taylor	f	2-5	0-0	0-0	2	4	6	1	4	0	0	1	1	16
21	BURFORD, Lauren	f	1-7	0-4	2-2	2	0	2	1	4	1	0	0	0	21
33	SWEENEY, Laura	f	1-3	0-1	0-0	0	2	2	4	2	0	2	1	2	16
02	ROBERTS, Rachel	g	2-6	0-3	0-0	2	0	2	2	4	0	5	0	1	19
03	CAREY, Jesse	g	1-5	1-4	0-0	0	3	3	1	3	0	1	0	0	30
05	COYER, Caroline	g	6-15	4-11	2-4	1	3	4	1	18	3	0	0	2	24
22	KANE, Devon	g	1-5	0-3	1-2	2	0	2	1	3	1	0	0	0	20
24	PEARSON, Megan	g	0-4	0-4	0-0	1	6	7	1	0	1	2	0	1	21
25	SUHEY, Emily	g	0-0	0-0	0-0	0	0	0	0	0	0	0	0	0	3
35	EDWARDS, Kavunaa	g	1-4	0-0	0-0	3	3	6	1	2	0	3	0	0	8
55	LEER, Emily	g	2-5	1-3	0-0	1	1	2	1	5	3	1	0	0	22
Team						0	2	2							
Totals			17-59	6-33	5-8	14	24	38	14	45	9	14	2	7	200

FG % 1st Half: 14-29 48.3% 2nd half: 3-30 10.0% Game: 17-59 28.8%  
 3FG % 1st Half: 6-17 35.3% 2nd half: 0-16 0.0% Game: 6-33 18.2%  
 FT % 1st Half: 0-2 0.0% 2nd half: 5-6 83.3% Game: 5-8 62.5%

Delaware 59 • 7-3

#	Player	Total			Rebounds			PF	TP	A	TO	Blk	Stl	Min	
		FG-FGA	3-PT	FT-FTA	Off	Def	Tot								
11	Delle Donne, Elena	f	6-17	1-2	4-4	3	9	12	1	17	1	1	2	1	36
12	Parker, Danielle	f	6-10	0-0	0-0	4	5	9	1	12	0	1	0	1	34
10	Miller, Kayla	g	0-5	0-3	0-0	0	1	1	1	0	2	1	0	1	35
15	Richards, Akeema	g	1-2	0-0	0-0	1	1	2	0	2	0	0	0	1	9
22	Carra, Lauren	g	5-10	0-3	1-1	0	6	6	2	11	2	6	0	0	27
02	Green, Courtney	g	0-0	0-0	0-0	0	0	0	0	0	0	0	0	0	1
03	May, Jaquetta	g	2-4	0-0	6-7	4	4	8	2	10	0	0	1	3	26
13	Buchanan, Kelsey	g	0-1	0-0	0-0	0	2	2	0	0	0	1	0	0	9
21	Lucas, Trumae	g	3-9	1-3	0-0	0	0	0	0	7	3	1	0	1	22
33	Leon, Stephanie	g	0-0	0-0	0-0	0	0	0	0	0	0	0	0	0	1
Team						1	0	1							
Totals			23-58	2-11	11-12	13	28	41	8	59	8	11	3	8	200

FG % 1st Half: 12-32 37.5% 2nd half: 11-26 42.3% Game: 23-58 39.7%  
 3FG % 1st Half: 0-4 0.0% 2nd half: 2-7 28.6% Game: 2-11 18.2%  
 FT % 1st Half: 8-9 88.9% 2nd half: 3-3 100.0% Game: 11-12 91.7%

Officials: John Riordan, Ronald DePasquale, Elizabeth Kuzmeski  
 Technical fouls: Villanova-None. Delaware-None.  
 Attendance: 843

Big Sky Classic at Dartmouth - 1st Round

Score by periods	1st	2nd	Total
Villanova	34	11	45
Delaware	32	27	59

Points	In	Off	2nd	Fast	Bench
VU	Paint	T/O	Chance	Break	
Villanova	18	11	8	4	28
Delaware	26	10	15	2	17

Last FG - VU 2nd-02:05, DELAWARE 2nd-02:58.  
 Largest lead - VU by 4 1st-00:33, DELAWARE by 19 2nd-07:04.

Score tied - 6 times.  
 Lead changed - 9 times.

Delaware 60, Duquesne 45 • 12/30/12 • Hanover, N.H.



Duquesne 45 • 11-2

#	Player	Total			Rebounds			PF	TP	A	TO	Blk	Stl	Min	
		FG-FGA	3-PT	FT-FTA	Off	Def	Tot								
10	AGUNBIADIE, Wumi	f	1-10	0-2	0-0	3	3	6	3	2	1	4	3	0	28
13	SZECSTI, Orsi	f	1-8	0-5	2-2	0	3	3	4	4	1	4	0	2	27
12	FLOYD, Jocelyn	g	3-5	0-0	1-2	4	6	4	7	0	3	0	3	25	
23	NURKIC, Belma	g	0-4	0-3	0-0	0	5	5	1	0	1	0	2	1	19
30	ROBINSON, April	g	4-12	2-6	2-4	0	1	1	2	12	1	1	0	0	35
00	ODISHO, Oditte	g	0-0	0-0	0-0	0	0	0	1	0	0	0	0	0	5
04	JOHNSON, Jose-Ann	g	2-5	0-0	0-2	1	3	4	1	4	1	0	0	0	13
11	HALL, Ahjah	g	0-1	0-1	2-2	2	0	2	0	2	0	0	1	0	15
15	MOORE, Raegan	g	1-2	1-2	0-0	0	0	0	0	3	0	0	0	0	9
24	ABEL, Vanessa	g	4-10	1-2	0-0	0	0	0	0	9	2	0	0	3	14
42	KING, Stasia	g	1-3	0-0	0-0	2	0	2	3	2	0	1	0	0	10
Team						2	1	3			2				
Totals			17-60	4-21	7-14	12	20	32	18	45	7	15	6	9	200

FG % 1st Half: 4-23 17.4% 2nd half: 13-37 35.1% Game: 17-60 28.3%  
 3FG % 1st Half: 0-10 0.0% 2nd half: 4-11 36.4% Game: 4-21 19.0%



**George Mason 27 • 5-8, 0-2 CAA**

#	Player	Total			3-Ptr			Rebounds			PF	TP	A	TO	Blk	Stl	Min
		FG-FGA	FG-FGA	FT-FTA	FG-FGA	FG-FGA	FT-FTA	Off	Def	Tot							
04	Easter, Amber	f	1-12	1-3	1-2	0	3	3	1	4	1	2	1	0	25		
30	Watts, Talisha	f	2-5	0-0	2-2	0	2	2	2	6	1	1	2	0	24		
33	Tharrington, Joyous	f	1-4	0-0	4-4	0	2	2	1	6	0	1	0	0	23		
01	Duckett, Shavonne	g	0-3	0-0	0-0	0	3	3	1	0	0	1	0	0	20		
15	Saunders, Rahneeka	g	2-10	1-1	0-1	2	0	2	3	5	1	3	0	2	29		
02	McNair, Rachel		0-1	0-0	0-2	3	0	3	1	0	0	0	0	0	12		
05	Mohamed, Reana		0-0	0-0	0-0	0	0	0	0	0	0	0	0	0	5		
11	Pickard, Janaa		1-6	1-2	0-0	1	0	1	3	3	0	1	1	0	18		
14	Collier, Melissa		1-1	0-0	0-0	2	0	2	1	2	0	1	0	1	8		
22	Jacobs, Kyana		0-4	0-0	1-2	1	1	2	2	1	2	1	0	1	19		
23	Strickland, Cierra		0-1	0-0	0-0	0	4	4	1	0	0	2	0	0	15		
24	Lawler, Annie		0-1	0-1	0-0	0	0	0	0	0	0	0	0	0	2		
	Team					3	0	3									
	Totals		8-48	3-7	8-13	12	15	27	16	27	5	13	4	4	200		

FG % 1st Half: 5-31 16.1% 2nd half: 3-17 17.6% Game: 8-48 16.7% Deadball  
 3FG % 1st Half: 2-5 40.0% 2nd half: 1-2 50.0% Game: 3-7 42.9% Rebounds  
 FT % 1st Half: 0-2 0.0% 2nd half: 8-11 72.7% Game: 8-13 61.5% 2

**Delaware 62 • 10-3, 1-0 CAA**

#	Player	Total			3-Ptr			Rebounds			PF	TP	A	TO	Blk	Stl	Min
		FG-FGA	FG-FGA	FT-FTA	FG-FGA	FG-FGA	FT-FTA	Off	Def	Tot							
11	Delle Donne, Elena	f	8-12	2-5	1-1	1	6	7	0	19	2	0	0	1	20		
12	Parker, Danielle	f	4-5	0-0	0-0	3	4	7	2	8	1	1	0	1	17		
10	Miller, Kayla	g	1-2	0-1	0-0	0	1	1	0	2	2	0	0	2	24		
15	Richards, Akeema	g	1-6	0-0	2-2	1	2	3	1	4	4	3	1	1	18		
22	Carra, Lauren	g	1-7	0-2	0-0	0	3	3	1	2	0	3	0	1	24		
02	Green, Courtnei		2-7	2-6	2-2	1	3	4	2	8	0	0	0	1	19		
03	May, Jaquetta		2-3	0-0	5-6	3	4	7	0	9	1	1	0	0	19		
13	Buchanan, Kelsey		0-1	0-0	0-0	1	0	1	2	0	0	0	0	0	7		
14	Bell, Alecia		1-3	0-0	0-0	1	1	2	1	2	1	0	0	0	8		
21	Lucas, Trumae		1-4	0-1	3-4	1	0	1	3	5	2	1	0	1	18		
23	Clark, Jade		0-0	0-0	0-0	0	0	0	0	0	0	1	0	0	3		
33	Leon, Stephanie		1-2	0-0	1-2	1	6	7	2	3	0	1	2	0	21		
45	Craig, Chelsea		0-0	0-0	0-0	1	0	1	0	0	0	0	0	0	2		
	Team					2	1	3									
	Totals		22-52	4-15	14-17	16	31	47	14	62	13	11	3	8	200		

FG % 1st Half: 13-29 44.8% 2nd half: 9-23 39.1% Game: 22-52 42.3% Deadball  
 3FG % 1st Half: 3-8 37.5% 2nd half: 1-7 14.3% Game: 4-15 26.7% Rebounds  
 FT % 1st Half: 6-7 85.7% 2nd half: 8-10 80.0% Game: 14-17 82.4% 2

Officials: Janice Aliberti (R), Warren Harding, Jr., Kesha Thompson  
 Technical fouls: George Mason-None. Delaware-None.

Attendance: 4212  
 UD wins 5th straight game...Mason loses 3rd straight game...UD wins 20th straight CAA regular season game overall, 12th straight CAA regular season home game...least points allowed by UD since 71-9 win over Catonsville on Feb. 27, 1973.

Score by periods	1st	2nd	Total
George Mason	12	15	27
Delaware	35	27	62

Points	In	Off	2nd	Fast	Bench
MASON	Paint	T/O	Chance	Break	
4	9	8	2	5	
23	13	11	5	27	

Last FG - MASON 2nd-10:36, DELAWARE 2nd-02:42.  
 Largest lead - MASON None, DELAWARE by 35 2nd-02:42.

Score tied - 0 times.  
 Lead changed - 0 times.

**2012-13 Delaware Women's Basketball**  
**Delaware Combined Team Statistics (as of Jan 10, 2013)**  
**All games**

<b>RECORD:</b>	<b>OVERALL</b>	<b>HOME</b>	<b>AWAY</b>	<b>NEUTRAL</b>
ALL GAMES	10-3	5-2	3-1	2-0
CONFERENCE	1-0	1-0	0-0	0-0
NON-CONFERENCE	9-3	4-2	3-1	2-0

#	Player	gp-gs	min	avg	Total			3-Point		F-Throw		Rebounds				pf	dq	a	to	blk	stl	pts	avg
					fg-fga	fg%	3fg-fga	3fg%	ft-fga	ft%	off	def	tot	avg									
11	Delle Donne, Elena	7-7	216	30.9	54-124	.435	14-27	.519	37-39	.949	14	58	72	10.3	6	0	11	11	13	4	159	22.7	
22	Carra, Lauren	13-13	404	31.1	54-148	.365	16-63	.254	32-48	.667	13	64	77	5.9	37	1	30	39	1	10	156	12.0	
12	Parker, Danielle	13-13	420	32.3	51-108	.472	0-0	.000	21-39	.538	47	73	120	9.2	25	0	8	23	3	19	123	9.5	
03	May, Jaquetta	13-4	308	23.7	32-66	.485	0-0	.000	26-40	.650	39	31	70	5.4	25	1	8	16	10	11	90	6.9	
21	Lucas, Trumae	13-5	280	21.5	23-77	.299	7-23	.304	18-23	.783	12	15	27	2.1	21	0	23	22	3	14	71	5.5	
15	Richards, Akeema	13-13	267	20.5	28-90	.311	0-0	.000	11-17	.647	13	24	37	2.8	14	0	19	25	2	9	67	5.2	
10	Miller, Kayla	13-8	375	28.8	15-42	.357	2-16	.125	15-21	.714	0	14	14	1.1	19	0	35	21	0	15	47	3.6	
02	Green, Courtnei	10-0	84	8.4	7-24	.292	7-21	.333	5-6	.833	2	9	11	1.1	6	0	0	5	3	4	26	2.6	
13	Buchanan, Kelsey	13-2	138	10.6	11-35	.314	0-0	.000	10-13	.769	14	15	29	2.2	12	0	2	8	4	1	32	2.5	
14	Bell, Alecia	6-0	31	5.2	1-9	.111	0-0	.000	4-6	.667	6	5	11	1.8	1	0	1	0	0	0	6	1.0	
33	Leon, Stephanie	13-0	91	7.0	5-16	.313	0-0	.000	3-6	.500	10	23	33	2.5	15	0	0	3	7	2	13	1.0	
23	Clark, Jade	4-0	8	2.0	0-1	.000	0-0	.000	0-0	.000	0	0	0	0.0	0	0	0	1	0	0	0	0.0	
45	Craig, Chelsea	2-0	3	1.5	0-0	.000	0-0	.000	0-0	.000	2	0	2	1.0	0	0	0	0	0	0	0	0.0	
Team											20	24	44				3						
Total.....		13	2625		281-740	.380	46-150	.307	182-258	.705	192	355	547	42.1	181	2	137	177	46	89	790	60.8	
Opponents.....		13	2625		229-728	.315	48-198	.242	138-200	.690	180	308	488	37.5	214	-	119	205	45	85	644	49.5	

<b>TEAM STATISTICS</b>	<b>DELAWARE</b>	<b>OPP</b>	<b>Date</b>	<b>Opponent</b>	<b>Score</b>	<b>Att.</b>
SCORING	790	644	% 11/09/12	SAM HOUSTON STATE	w 63-31	1872
Points per game	60.8	49.5	% 11/11/12	GEORGETOWN	L 56-62	859
Scoring margin	+11.2	-	% 11/14/12	at Duquesne	L 47-51	1126
FIELD GOALS-ATT	281-740	229-728	11/20/12	PROVIDENCE	w 64-46	3390
Field goal pct	.380	.315	11/28/12	ST. BONAVENTURE	w 68-58	3596
3 POINT FG-ATT	46-150	48-198	12/05/12	at Rhode Island	w 57-40	689
3-point FG pct	.307	.242	12/09/12	PRINCETON	w 59-58	4029
3-pt FG made per game	3.5	3.7	12/20/12	MARYLAND	L 53-69	5089
FREE THROWS-ATT	182-258	138-200	12/22/12	at Monmouth	w 82-53	710
Free throw pct	.705	.690	# 12/29/12	vs Villanova	w 59-45	843
F-Throws made per game	14.0	10.6	# 12/30/12	vs Duquesne	w 60-45	748
REBOUNDS	547	488	01/02/13	at St. John's	Wot 60-59	829
Rebounds per game	42.1	37.5	* 01/10/13	GEORGE MASON	w 62-27	4212
Rebounding margin	+4.5	-				
ASSISTS	137	119				
Assists per game	10.5	9.2	% = Preseason WNIT			
TURNOVERS	177	205	# = Big Sky Class. at Dartmouth (1st)			
Turnovers per game	13.6	15.8	* = Colonial Athletic Assoc. Game			
Turnover margin	+2.2	-				
Assist/turnover ratio	0.8	0.6				
STEALS	89	85				
Steals per game	6.8	6.5				
BLOCKS	46	45				
Blocks per game	3.5	3.5				
ATTENDANCE	23047	4945				
Home games-Avg/Game	7-3292	4-838				
Neutral site-Avg/Game	-	2-796				

<b>Score by Periods</b>	<b>1st</b>	<b>2nd</b>	<b>OT</b>	<b>Totals</b>
Delaware	382	399	9	790
Opponents	318	318	8	644