



OLD DOMINION

2019-2020 WOMEN'S BASKETBALL

2019-20 SCHEDULE/RESULTS

| | | |
|--------|-----------------------|----------|
| N8 | Campbell | W, 59-44 |
| N14 | at Auburn | W, 89-77 |
| N20 | Winthrop # | W, 68-44 |
| N24 | at Virginia | 2:00 PM |
| N29 | vs. Cal Poly ^ | 3:00 PM |
| N30 | vs. Idaho ^ | 3:00 PM |
| D5 | at William & Mary | 7:00 PM |
| D8 | UMES | 2:00 PM |
| D15 | at VCU | 1:00 PM |
| D19 | Richmond + | 5:00 PM |
| D20 | Hampton + | 5:00 PM |
| D21 | Mount St. Mary's + | 2:00 PM |
| J2 | at Middle Tennessee * | 3:00 PM |
| J4 | at UAB * | 3:00 PM |
| J11 | Charlotte * | 2:00 PM |
| J16 | WKU * | 6:30 PM |
| J18 | Marshall * | 2:00 PM |
| J23 | at FIU * | 7:00 PM |
| J25 | at FAU * | 2:00 PM |
| J30 | Southern Miss * | 6:30 PM |
| F1 | LA Tech * | 2:00 PM |
| F6 | at UTSA * | 8:00 PM |
| F8 | at UTEP * | 2:00 PM |
| F13 | Rice * | 6:30 PM |
| F15 | North Texas * | 2:00 PM |
| F20 | at Charlotte * | 7:00 PM |
| F22 | C-USA Game * | TBA |
| F26 | C-USA Game * | TBA |
| F29 | C-USA Game * | TBA |
| M5 | C-USA Game * | TBA |
| M7 | C-USA Game * | TBA |
| M11-14 | C-USA Championship % | TBA |

^ ShareSLO Holiday Beach Classic (San Luis Obispo, Calif.)
 # Education Day
 + Anne Donovan Classic
 * Conference USA game
 % C-USA Tournament held at The Star in Frisco, Texas

SOCIAL MEDIA
 Twitter: @ODUWBB | #Monarchs | #Empower
 Facebook: ODU Women's Basketball
 Instagram: @oduwbasketball

ATHLETIC COMMUNICATIONS
 Women's Basketball Contact: Rebecca Gaona
 Email: rgaona@odu.edu
 Phone: 908-907-5515 (C) | 757-683-3395 (O)

OLD DOMINION (3-0) AT VIRGINIA (2-3)
 Nov. 24, 2019 || 2 pm ET || John Paul Jones Arena
GAME FOUR



OLD DOMINION MONARCHS

Head Coach: Nikki McCray-Penson (3rd season)
 Record at ODU: 32-34
 Monarch Record: 3-0 (0-0 C-USA)
 Last Game: W, 68-44 vs. Winthrop
 Ranking: N/A

AT



VIRGINIA CAVALIERS

Head Coach: Tina Thompson
 Record at Virginia: 14-22
 Cavalier Record: 2-3 (0-0 ACC)
 Last Game: L, 83-44 vs. #4 UConn
 Ranking: N/A

SERIES HISTORY
 All-Time: ODU leads 19-15
 Last Meeting: Nov. 18, 2018 (L, 73-67) at ODU
 First Meeting: 1973-74 (L, 46-40)

STREAM || ACC NETWORK EXTRA
 RADIO || ESPN RADIO 94.1
 PXP || DOUG RIPLEY
 COLOR || SUSAN MONTGOMERY

OLD DOMINION ROSTER

| # | PLAYER | POS | HT | YR | HOMETOWN (HIGH SCHOOL) [PREV COLLEGE] |
|----|-----------------|-----|------|------|---|
| 0 | Vanessa Blagmon | G | 5-8 | RSO. | Atlanta, Ga. (Norcross) (USF) |
| 1 | Mariah Adams | G | 6-0 | So. | Little Rock, Ark. (eSTEM) |
| 2 | Jordan Bailey | F | 6-1 | Fr. | Colbert, Ga. (Madison County) |
| 3 | Ajah Wayne | G | 5-10 | So. | Birmingham, Ala. (Ramsay) |
| 4 | Aziah Hudson | G | 5-6 | So. | Baldwin, N.Y. (Baldwin) |
| 5 | Victoria Morris | G | 5-8 | Jr. | Cincinnati, Ohio (North College Hill) |
| 11 | Taylor Edwards | G | 5-9 | Sr. | Portsmouth, Va. (Woodrow Wilson) |
| 12 | Amaya Register | G | 5-4 | So. | Conyers, Ga. (Wesleyan) |
| 14 | Dejah Carter | F | 6-2 | Jr. | Chesterfield, Va. (Cosby) |
| 20 | Maggie Robinson | F | 6-0 | Sr. | Mobile, Ala. (W.P. Davidson) (Shelton State CC) |
| 23 | Amari Young | F | 5-11 | So. | North Augusta, S.C. (North Augusta) |
| 24 | Mackenzie Smith | G | 5-6 | Fr. | Camillus, N.Y. (West Genesee) |
| 25 | Ashley Scott | C | 6-3 | Sr. | Mobile, Ala. (UMS-Wright Prep) (Shelton State CC) |
| 31 | Marie Reichert | F | 6-2 | Fr. | Kassel, Germany (Albert-Schweitzer Schule) |

OLD DOMINION PROBABLE LINEUP

| POS | # | PLAYER | PPG | NOTES |
|--------------|----|-----------------|------|---|
| G | 3 | Ajah Wayne | 17.7 | Recorded a career-high 35 points against Auburn |
| G | 5 | Victoria Morris | 10.3 | 3-for-5 from 3pt range against Winthrop; 11 pts total |
| G | 23 | Amari Young | 10.0 | Three-straight games with 5+ rebounds |
| G | 11 | Taylor Edwards | 9.7 | Currently leads the team in assists (10) |
| F | 25 | Ashley Scott | 0.7 | Played a season-high 21 minutes at Auburn |
| BENCH | | | | |
| G | 0 | Vanessa Blagmon | N/A | Sitting out until 2020 due to NCAA Transfer rules |
| G | 1 | Mariah Adams | 4.7 | Dished out a career-high 6 assists against Auburn |
| F | 2 | Jordan Bailey | 0.0 | Saw 5 minutes off bench in season opener (Campbell) |
| G | 4 | Aziah Hudson | 4.3 | 1.000 ft% this season |
| G | 12 | Amaya Register | 8.3 | Career-high 16 points against Winthrop |
| C | 14 | Dejah Carter | 0.0 | Saw 5 minutes and 3 rebs off the bench in season opener |
| F | 31 | Marie Reichert | 6.3 | Career-high 11 points against Winthrop |
| F | 20 | Maggie Robinson | -- | Out for season with torn ACL |
| G | 24 | Mackenzie Smith | -- | Out for season with torn ACL |

QUICK FACTS

GENERAL INFORMATION

| | |
|----------------------------|--|
| Location: | Norfolk, Va. [23529] |
| Nickname: | Monarchs |
| Founded: | 1930 (as Norfolk Division of William & Mary) |
| Enrollment: | 24,375 |
| School Colors: | Slate Blue (PMS 540) Silver (PMS 877) Light Blue (PMS 283) |
| Home Court: | Ted Constant Center (8,472) |
| Surface: | Wood |
| Conference: | Conference USA |
| President: | John R. Broderick |
| Athletic Director: | Dr. Wood Selig |
| A.D. Office Phone: | 757-683-3369 |
| Sr. Women's Administrator: | Carolyn Crutchfield |
| Athletic Department Phone: | 757-683-3375 |
| Ticket Office Phone: | 757-683-4444 |
| Ticket Office Website: | YNotTix.com |
| Athletics Website: | www.ODUSports.com |

HISTORY

| | |
|--------------------------|----------------------------|
| First Year: | 1969-70 |
| All-Time Record: | 1061-453 (.701) / 50 years |
| NCAA Appearances / Last: | 25 / 2008 |

COACHING STAFF

| | |
|--------------------------|-------------------------------|
| Head Coach: | Nikki McCray (Tennessee '95) |
| Record at ODU: | 32-34 (.484) / 3rd season |
| Career Record: | 32-34 (.484) / 3rd season |
| Associate H.C.: | Keith Freeman (2nd season) |
| Assistant: | Scepter Brownlee (2nd season) |
| Assistant: | Brittany Young (3rd season) |
| Office Phone: | 757-683-3401 |
| Director of Operations: | Ashley Morris |
| Strength & Conditioning: | Kelsey Wolfe |
| Video Coordinator: | Kyle Weakland |
| Athletic Trainer: | Andilynn Beadles |
| Sport Administrator: | Ken Brown |

2018-19 SEASON IN REVIEW

| | |
|-------------------------------|----------------------------|
| 2018-19 Record: | 21-11 |
| 2018-19 C-USA Record: | 10-6 (5th) |
| 2019 C-USA Tournament: | Second Round (1-1) |
| Postseason: | WNIT (First Round) |
| Letterwinners Returning/Lost: | 10/2 |
| Starters Returning/Lost: | 5/0 |
| Newcomers: | 4 (3 freshman, 1 transfer) |

ATHLETIC COMMUNICATIONS

| | |
|------------------|----------------|
| Contact: | Rebecca Gaona |
| Office Phone: | (757) 683-3395 |
| Cell Phone: | (908) 907-5515 |
| Email: | rgaona@odu.edu |
| Office Fax: | (757) 683-3119 |
| Press Row Phone: | 757-683-5596 |

2019-20 ROSTER

| # | NUMERICAL | POS | HT | YR | HOMETOWN (HIGH SCHOOL) [PREV COLLEGE] |
|----|-----------------|-----|------|------|---|
| 0 | Vanessa Blagmon | G | 5-8 | RSo. | Atlanta, Ga. [Norcross] [USF] |
| 1 | Mariah Adams | G | 6-0 | So. | Little Rock, Ark. [eSTEM] |
| 2 | Jordan Bailey | F | 6-1 | Fr. | Colbert, Ga. [Madison County] |
| 3 | Ajah Wayne | G | 5-10 | So. | Birmingham, Ala. [Ramsay] |
| 4 | Aziah Hudson | G | 5-6 | So. | Baldwin, N.Y. [Baldwin] |
| 5 | Victoria Morris | G | 5-8 | Jr. | Cincinnati, Ohio [North College Hill] |
| 11 | Taylor Edwards | G | 5-9 | Sr. | Portsmouth, Va. [Woodrow Wilson] |
| 12 | Amaya Register | G | 5-4 | So. | Conyers, Ga. [Wesleyan] |
| 14 | Dejah Carter | F | 6-2 | Jr. | Chesterfield, Va. [Cosby] |
| 20 | Maggie Robinson | F | 6-0 | Sr. | Mobile, Ala. [W.P. Davidson] [Shelton State CC] |
| 23 | Amari Young | F | 5-11 | So. | North Augusta, S.C. [North Augusta] |
| 24 | Mackenzie Smith | G | 5-6 | Fr. | Camillus, N.Y. [West Genesee] |
| 25 | Ashley Scott | C | 6-3 | Sr. | Mobile, Ala. [UMS-Wright Prep] [Shelton State CC] |
| 31 | Marie Reichert | F | 6-2 | Fr. | Kassel, Germany [Albert-Schweitzer-Schule] |

| # | ALPHABETICAL | POS | HT | YR | HOMETOWN (HIGH SCHOOL) [PREV COLLEGE] |
|----|-----------------|-----|------|------|---|
| 1 | Mariah Adams | G | 6-0 | So. | Little Rock, Ark. [eSTEM] |
| 2 | Jordan Bailey | F | 6-1 | Fr. | Colbert, Ga. [Madison County] |
| 0 | Vanessa Blagmon | G | 5-8 | RSo. | Atlanta, Ga. [Norcross] [USF] |
| 14 | Dejah Carter | F | 6-2 | Jr. | Chesterfield, Va. [Cosby] |
| 11 | Taylor Edwards | G | 5-9 | Sr. | Portsmouth, Va. [Woodrow Wilson] |
| 4 | Aziah Hudson | G | 5-6 | So. | Baldwin, N.Y. [Baldwin] |
| 5 | Victoria Morris | G | 5-8 | Jr. | Cincinnati, Ohio [North College Hill] |
| 12 | Amaya Register | G | 5-4 | So. | Conyers, Ga. [Wesleyan] |
| 31 | Marie Reichert | F | 6-2 | Fr. | Kassel, Germany [Albert-Schweitzer-Schule] |
| 20 | Maggie Robinson | F | 6-0 | Sr. | Mobile, Ala. [W.P. Davidson] [Shelton State CC] |
| 25 | Ashley Scott | C | 6-3 | Sr. | Mobile, Ala. [UMS-Wright Prep] [Shelton State CC] |
| 24 | Mackenzie Smith | G | 5-6 | Fr. | Camillus, N.Y. [West Genesee] |
| 3 | Ajah Wayne | G | 5-10 | So. | Birmingham, Ala. [Ramsay] |
| 23 | Amari Young | F | 5-11 | So. | North Augusta, S.C. [North Augusta] |

COACHING STAFF

Head Coach: Nikki McCray-Penson (3rd season, Tennessee '95)
 Associate Head Coach: Keith Freeman (2nd season, Huntington College '86)
 Assistant Coach: Scepter Brownlee (2nd season, San Francisco '04)
 Assistant Coach / Recruiting Coordinator: Brittany Young (3rd season, Francis Marion '08)
 Director Of Operations: Ashley Morris (3rd season, Temple '08)

PRONUNCIATION GUIDE

Mariah Adams: muh-RY-uh
 Ajah Wayne: Asia
 Aziah Hudson: Asia
 Amaya Register: uh-MY-yuh
 Dejah Carter: DAY-zhuh
 Marie Reichert: Rye-Shert
 Vanessa Blagmon: Blagg-Men
 Scepter Brownlee: SEP-ter

SUPPORT STAFF

Video Coordinator: Kyle Weakland
 Strength & Conditioning: Kelsey Wolfe
 Athletic Trainer: Andilynn Beadles
 Managers: Isaiah Fernandez, Kel Darling

SQUAD BREAKDOWN

NEWCOMERS (4)

Vanessa Blagmon
 Marie Reichert
 Mackenzie Smith
 Jordan Bailey

BY CLASS

Senior (3): Edwards, Scott, Robinson
 Junior (3): Blagmon, Carter, Morris
 Sophomore (5): Adams, Hudson, Register, Wayne, Young
 Freshman (3): Bailey, Reichert, Smith

BY POSITION

Guard (8): Adams, Blagmon, Edwards, Hudson, Morris, Register, Smith, Wayne
 Forward (5): Bailey, Carter, Reichert, Robinson, Young
 Center (1): Scott

BY STATE

Alabama (3): Robinson, Scott, Wayne
 Georgia (3): Bailey, Blagmon, Register
 Virginia (2): Carter, Edwards
 New York (2): Hudson, Smith
 Arkansas (1): Adams
 Ohio (1): Morris
 South Carolina (1): Young
 Germany (1): Reichert

BY HEIGHT

5-4..... Amaya Register
 5-6..... Aziah Hudson, Mackenzie Smith
 5-8..... Vanessa Blagmon, Victoria Morris
 5-9..... Taylor Edwards
 5-10..... Ajah Wayne
 5-11..... Amari Young
 6-0..... Mariah Adams, Maggie Robinson
 6-1..... Jordan Bailey
 6-2..... Dejah Carter, Marie Reichert
 6-3..... Ashley Scott

2019-20 RADIO/BROADCAST CHART



VANESSA BLAGMON | G | RSO. | 5-8
Atlanta, Ga. | USF | Norcross



MARIAH ADAMS | G | SO. | 6-0
Little Rock, Ark. | ESTEM



JORDAN BAILEY | F | FR. | 6-1
Colbert, Ga. | Madison County



AJAH WAYNE | G/F | SO. | 5-10
Birmingham, Ala. | Ramsay



AZIAH HUDSON | G | SO. | 5-6
Baldwin, N.Y. | Baldwin



VICTORIA MORRIS | G | JR. | 5-8
Cincinnati, Ohio | North College Hill



TAYLOR EDWARDS | G | SR. | 5-9
Portsmouth, Va. | Woodrow Wilson



AMAYA REGISTER | G | SO. | 5-4
Conyers, Ga. | Wesleyan



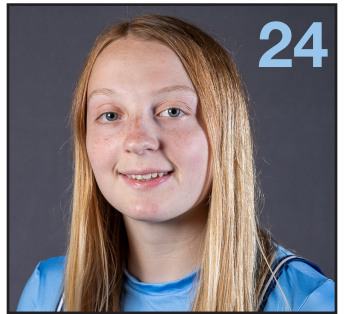
DEJAH CARTER | F | JR. | 6-2
Chesterfield, Va. | Cosby



MAGGIE ROBINSON | F | SR. | 6-0
Mobile, Ala. | Shelton State CC
(W.P. Davidson)



AMARI YOUNG | F | SO. | 5-11
North Augusta, S.C. | North Augusta



MACKENZIE SMITH | G | FR. | 5-6
Camillus, N.Y. | West Genesee



ASHLEY SCOTT | C | SR. | 6-3
Mobile, Ala. | Shelton State CC
(UMS-Wright Prep)



MARIE REICHERT | F | FR. | 6-2
Kassel, Germany
Albert-Schweitzer-Schule



NIKKI MCCRAY-PENSON
HEAD COACH | THIRD SEASON



KEITH FREEMAN
ASSOC. HC | SECOND SEASON



SCEPTER BROWNLEE
ASST. COACH | SECOND SEASON



BRITTANY YOUNG
ASST. COACH | THIRD SEASON

SITUATIONAL RECORDS

| STAT | Record (last year) |
|-----------------------|--------------------|
| Home | 2-0 (11-3) |
| Home (C-USA) | 0-0 (6-2) |
| Home (Non-Conference) | 2-0 (5-1) |
| Away | 1-0 (7-6) |
| Away (C-USA) | 0-0 (4-4) |
| Away (Non-Conference) | 1-0 (3-1) |
| Neutral | 0-0 (3-2) |
| Leading after 1Q | 3-0 (15-4) |
| Trailing after 1Q | 0-0 (6-6) |
| Tied after 1Q | 0-0 (0-0) |
| Leading at Half | 3-0 (16-1) |
| Trailing at Half | 0-0 (5-9) |
| Tied at Half | 0-0 (0-1) |
| Leading after 3Q | 3-0 (19-0) |
| Trailing after 3Q | 0-0 (2-10) |
| Tied after 3Q | 0-0 (0-0) |
| Scores <50 | 0-0 (0-2) |
| Scores 50-59 | 1-0 (2-3) |
| Scores 60-69 | 1-0 (5-5) |
| Scores 70-79 | 0-0 (9-0) |
| Scores 80-89 | 1-0 (4-0) |
| Scores 90-99 | 0-0 (1-0) |
| Scores >100 | 0-0 (0-0) |
| Allows <50 | 2-0 (4-1) |
| Allows 50-59 | 0-0 (9-1) |
| Allows 60-69 | 0-0 (4-3) |
| Allows 70-79 | 1-0 (4-3) |
| Allows 80-89 | 0-0 (0-2) |
| Allows 90-99 | 0-0 (0-0) |
| Allows >100 | 0-0 (0-0) |
| FG% > 40 | 1-0 (14-0) |
| FG% < 40 | 2-0 (7-10) |
| Opp. FG% > 40 | 1-0 (4-8) |
| Opp. FG% < 40 | 2-0 (17-2) |
| FG% > Opp. | 3-0 (20-0) |
| FG% </= Opp. | 0-0 (1-10) |
| 3PT Made > Opp. | 2-0 (12-3) |
| 3PT Made </= Opp. | 1-0 (9-7) |
| FT% >/= 70 | 0-0 (4-1) |
| FT% < 70 | 3-0 (17-9) |
| FT ATT > Opp. | 2-0 (13-2) |
| FT ATT </= Opp. | 1-0 (8-8) |
| Rebounds > Opp. | 2-0 (16-3) |
| Rebounds </= Opp. | 1-0 (5-7) |
| Assists > Opp. | 1-0 (14-2) |
| Assists </= Opp. | 2-0 (7-8) |
| Turnovers > Opp. | 1-0 (7-2) |
| Turnovers </= Opp. | 2-0 (14-8) |
| Overtime | 0-0 (2-0) |
| OT at Home | 0-0 (0-0) |
| OT on Road | 0-0 (2-0) |
| Top 25 | 0-0 (0-1) |
| Top 25 at Home | 0-0 (0-0) |
| Top 25 on Road | 0-0 (0-1) |

MONARCH NOTES

SCOUTING VIRGINIA

The Hoos are coming off a road loss at #4 Connecticut this past Tuesday by an 83-44 final score. Their two wins this season come to mid-major programs in Bucknell (Nov. 5) and the CSUN (Nov. 12).

Leading the pack this season is Jocelyn Willoughby, who averages 18.2 points per game.

LAST TIME OUT

ODU is riding a three-game win streak into the Virginia game on Sunday. The Monarchs last game was dominant 68-44 win over Winthrop on Wednesday, Nov. 20. The Monarchs were led by sophomore Amaya Register. ODU added 51 rebounds to the stat sheet, which is the most rebounds collected from ODU this season. With that win, the Monarchs lead the league in scoring margin, having defeated the Eagles by 24 points.

A WIN AT UVA WILL MEAN...

If the Monarchs win at Virginia, they will improve to starting the season 4-0 for the first time since the 2012-13 season.

It will also mean that ODU has defeated two Power Five programs in one season. The last time ODU completed that feat was the 2010-11 season, when ODU defeated Georgia Tech (11/14/10) and Louisville (11/26/10) in the same season and month.

IN THE LEAGUE

The Monarchs and Charlotte are the only two teams in the league that remain undefeated. Statistically, ODU leads the league in the scoring margin category. The Monarchs rank second in the league in assist/turnover ratio and three-point field goals made.

Individually, sophomore Ajah Wayne ranks second in scoring, averaging 17.7 ppg. Overall, Wayne ranks in the top-10 in 4 different statistical categories in the league, which are rebounding, scoring, steals and defensive rebounds. Taylor Edwards ranks in the top-10 in assists, averaging 3.3 per game.

REGISTERING POINTS

Sophomore Amaya Register collected a career-high 16 points on Wednesday afternoon against Winthrop. In just her third career game, Register surpassed her prior high of nine points. Last season, Register sat out due to an ACL tear.

NIKKI MCCRAY & TINA THOMPSON

Both members of the Women's Basketball Hall of Fame, head coaches Nikki McCray and Virginia's Tina Thompson both were Olympic Gold Medalists. Tina Thompson won gold medals in 2004 and 2008, while McCray earned gold medals in 1996 and 2000. They were also trailblazers in the WNBA.

AJAH WAYNE C-USA POW

On Nov. 18, sophomore Ajah Wayne was named C-USA Player of the Week as voted on by the leagues 14 communications directors. Wayne scored a career-high 35 points in the Monarchs 89-77 win over Auburn on Nov. 14. Wayne's performance also marked the first 30+ point game from a Monarch since March, 9, 2017.

MONARCHS AGAINST THE ACC

Against current members of the ACC, ODU is 103-83 overall. The Monarchs have just two losing records to league teams in NC State and Duke.

Florida State [1-1]
Georgia Tech [2-2]
NC State [14-22]
Virginia Tech [25-8]
Louisville [3-2]
Miami [3-2]
North Carolina [12-7]
Syracuse [7-5]
Notre Dame [5-1]
Boston College [1-1]
Clemson [2-1]
Duke [4-11]
Pitt [3-3]

Wake Forest [2-2]
Virginia [19-15]

FIRST POWER FIVE WIN SINCE 2014-15 SEASON

ODU topped Auburn on Nov. 14, 89-77 on the road. The win marked the first victory over a Power 5 team since March 19, 2015, when ODU defeated Virginia. During the win, the Monarchs posted a program-record 14 single-game 3-pointers.

HALFTIME LEADS

In all three of their games this season, the Monarchs took a halftime lead. Against Campbell, ODU went into the locker room with a 27-22 lead. Against the Tigers, the Monarchs held on to a 41-39 lead after 20 minutes. In their most recent game, ODU tacked on a 35-21 lead heading into the locker room, their biggest halftime lead this season.

MORE ASSISTS THAN TURNOVERS

In their last two games, the Monarchs have had more assists in the game than turnovers. Against Auburn, the Monarchs had 15 turnovers and 16 assists. In their most recent game against Winthrop, ODU compiled just 12 turnovers, while adding 14 assists.

RETURNING ALL BUT TWO

Head coach Nikki McCray returns nearly her entire roster from the 2018-19 season. McCray did not graduate any student-athletes and had just two players transfer. Despite the two player loss, McCray did not lose one starter.

13-WIN IMPROVMENT IN 2018-19

The Monarchs are coming off one of the biggest turnaround, not only in program history, but in the nation. In Nikki McCray's second season, the Monarchs went 21-11, marking a 13-win improvement from the previous season. The 13+ win mark was the second-best single-season improvement in program history and the sixth-best turnaround in the NCAA last year. With the 21 wins, ODU earned an at-large bid to the WNIT, the program's seventh appearance in the WNIT and first postseason appearance since 2015.

ODU IN THE C-USA PRESEASON POLL

Released by the C-USA on October 16, the Monarchs were picked to finish 5th in the league. The poll was voted on by all 14 head coaches. See below for the entire 2019 C-USA Preseason Poll.

1. Rice [11]
2. Middle Tennessee [3]
3. WKU
4. UAB
5. Old Dominion
6. Charlotte
7. North Texas
8. Southern Miss
9. Louisiana Tech
10. Florida Atlantic
11. Marshall
12. UTEP
13. UTSA
14. FIU

FIRST POSTSEASON APPEARANCE SINCE 2015

With their at-large bid to the WNIT in 2019, it marked their first postseason appearance since 2015 when ODU took a trip to the second round of the WNIT under previous head coach Karen Barefoot.

THE CHARTWAY ARENA

The Monarchs now have a new name for their home in the Chartway Arena. This change comes thanks to a 10-year, \$4.25 million branding and sponsorship agreement between Old Dominion University and Chartway Federal Credit Union. As part of the agreement, Chartway will also contribute \$25,000 annually in scholarships for ODU student athletes.

#EMPOWER

This year's social media hashtag theme is #Empower, replacing last year's motto of #RootedTogether. The #Empower theme pushes the Monarchs to be accountable, encouraging and role models to one another.

THE LAST TIME...

TEAM SCORING

| | |
|--------------------|---|
| 100+ | W, 105-62 vs. Hofstra (2/14/04) |
| 90+ | W, 95-68 vs. FIU (1/12/19) |
| <40 | L, 39-68 at VCU (12/6/17) |
| Allowed 100+ | L, 94-100 _{30T} vs. N'eastern (1/7/10) |
| Allowed <40 | W, 52-35 vs. SC State (12/30/17) |
| 5 plyrs w/ 10+ Pts | (5) W, 79-53 vs. Marsh. (3/2/19) |
| 6 plyrs w/ 10+ Pts | (6) W, 95-68 vs. FIU (1/12/19) |

TEAM STATS

| | |
|---------------|-----------------------------------|
| 60%+ | 61.4% at Southern Miss (2/10/18) |
| 60%+ 3PT | 69.2% at Southern Miss (2/10/18) |
| 10+ 3PT | 14 vs. Auburn (11/14/19) |
| 100% FT | 5-5 at George Mason (11/17/17) |
| 40+ FT ATT | 42 vs. William & Mary (12/8/18) |
| 10+ REB MARG. | +19 vs. Winthrop (11/20/19) |
| 20+ REB MARG. | +33 vs Florida Atlantic (3/13/19) |
| 30+ REB MARG. | +33 vs Florida Atlantic (3/13/19) |
| 20+ OFF REBS | 22 vs. Winthrop (11/20/19) |

OVERTIME

| | |
|-----------|--------------------------------------|
| Game | W, 78-76 vs. Jacksonville (11/24/18) |
| Win | W, 78-76 vs. Jacksonville (11/24/18) |
| Loss | L, 74-85 vs. WKU (2/18/16) |
| Road Game | W, 78-76 vs. Jacksonville (11/24/18) |

INDIVIDUAL

| | |
|---------------------|---|
| 50+ Points | Anne Donovan (50) vs. Norfolk State (12/11/80) |
| 40+ Points | Jennie Simms (41) at Florida Atlantic (2/4/17) |
| 30+ Points | Ajah Wayne (35) vs. Auburn (11/14/19) |
| Triple-Double | Ticha Penicheiro (22p/15r/14s) vs. St. Francis, PA (3/13/98) |
| Double-Double (P/R) | Ajah Wayne (35p/10r) vs. Auburn (11/14/19) |
| Double-Double (P/A) | Taylor Edwards (16p/10a) vs. Jacksonville (11/24/18) |
| 2 players with D/D | T. Edwards/D. Oigbokie vs. SC State (12/30/17) |
| 10+ 3PT | TJ Jordan (10) vs. Northeastern (2/8/07) |
| 20+ FT ATT | Ajah Wayne (20) at Cincinnati (11/12/18) |
| 15+ REB | Ajah Wayne (15) at #13 NC State (12/2/18) |
| 20+ REB | Ije Ajemba (21) vs. Charlotte (3/10/16) |
| 10+ OFF REB | Ashley Scott (11) vs. Florida Atlantic (3/13/19) |
| 10+ ASTS | Taylor Edwards (10) vs. Jacksonville (11/24/18) |
| 5+ BLKS | Marie Reichert (5) vs. Campbell (11/8/19) |
| 5+ STLS | Amari Young (5) vs. Campbell (11/8/19) |

MONARCH NOTES CONT.

THE NEWCOMERS

Head coach Nikki McCray brought in three freshman and one transfer to join the Monarchs in 2019-20.

Vanessa Blagmon joins the Monarchs from the University of South Florida. Due to NCAA Transfer rules, Blagmon will have to sit out until the second semester.

McCray's three freshman include: Jordan Bailey, Mackenzie Smith and Marie Reichert.

- Bailey is a versatile forward from Colbert, Georgia, a small town near Athens. Averaged 22 points and 10 rebound her senior year. In the 2017-18 season, Bailey was named the BAAAA Co-Player of the Year and the Georgia AAAA Player of the Year after leading Madison County to a 22-7 overall record and the school's second consecutive Elite 8 appearance.

- Smith is a point guard from Camillus, New York, located in the suburbs of Syracuse. Last season, Smith was an All-State selection after averaging 14 points, six assists, four rebounds and four steals per game. She also helped guide West Genesee to the Class AA State Championship game.

- Reichert is a skilled forward from Kassel, Germany, a small town located approximately two hours from Frankfurt. Reichert played with the 18U Germany National Team in a tournament in Macedonia, as well as the 19U National Team for the World Championship Games in Thailand. Aside from her national team experience, Reichert played for the Bender Baskets of Grunberg, where she averaged 12 points and seven rebounds, while shooting 50 percent from the floor.

ONE LAST RIDE

Starting as a walk-on in 2016, Taylor Edwards has made huge strides on and off the court as she laces up for her final season and third overall with head coach Nikki McCray. In her junior campaign, Edwards played in all 32 games, making 30 starts, where she averaged 11.4 points, 5.0 rebounds, 4.3 assists and 1.5 steals. She also led the team and ranked fourth in Conference USA in assists

ALL CONFERENCE ACCOLADES IN 2018-19

Victoria Morris was named to the All-C-USA Second Team and Wayne was named to both the All-Freshman Team and All-Defensive Team. Morris closed out her sophomore campaign averaging a team-leading 12.8 points to go along with 2.3 rebounds and 1.3 assists, despite missing eight games due to a right foot injury late in the season. Wayne averaged 11.9 points, 7.9 rebounds, 2.1 assists and 1.7 steals. She played in all but one game, making 30 starts. The Alabama native turned in one of the greatest freshman seasons in school history.

SITUATIONAL RECORDS

| STAT | Record (last year) |
|------------------|--------------------|
| 3 points or less | 0-0 (4-0) |
| 4-9 points | 0-0 (5-5) |
| 10-19 points | 2-0 (4-4) |
| 20+ points | 1-0 (8-1) |
| Night | 2-0 (8-2) |
| Day | 1-0 (13-8) |
| November | 3-0 (5-1) |
| December | 0-0 (4-2) |
| January | 0-0 (7-2) |
| February | 0-0 (1-4) |
| March | 0-0 (4-1) |
| Sunday | 0-0 (2-2) |
| Monday | 0-0 (2-0) |
| Tuesday | 0-0 (1-0) |
| Wednesday | 1-0 (1-0) |
| Thursday | 1-0 (5-3) |
| Friday | 1-0 (2-0) |
| Saturday | 0-0 (8-5) |

GAME STATS

| CATEGORY | STATS |
|------------------------|--------------------|
| Most Pts | 89 vs. Auburn |
| Low Pts | 59 vs. Campbell |
| Most Opp. Pts | 77 vs. Auburn |
| Low Opp. Pts | 44 vs. Winthrop |
| Largest Lead | 28 vs. Winthrop |
| Largest Deficit | 5 vs. Campbell |
| Most Lead Changes | 6 vs. Winthrop |
| Most ODU led | 37:43 vs. Winthrop |
| Least ODU led | 00:45 vs. Auburn |
| Most 1Q Pts | 24 vs. Auburn |
| Low 1Q Pts | 12 vs. Campbell |
| Most Opp. 1Q Pts | 21 vs. Auburn |
| Low Opp. 1Q Pts | 9 vs. Winthrop |
| Most 2Q Pts | 20 vs. Winthrop |
| Low 2Q Pts | 15 vs. Campbell |
| Most Opp. 2Q Pts | 18 vs. Auburn |
| Low Opp. 2Q Pts | 12 vs. Winthrop |
| Most 1st Half Pts | 41 vs. Auburn |
| Low 1st Half Pts | 27 vs. Campbell |
| Most Opp. 1st Half Pts | 39 vs. Auburn |
| Low Opp. 1st Half Pts | 21 vs. Winthrop |
| Most 3Q Pts | 19 vs. Auburn |
| Low 3Q Pts | 15 vs. Winthrop |
| Most Opp. 3Q Pts | 19 vs. Auburn |
| Low Opp. 3Q Pts | 8 vs. Winthrop |
| Most 4Q Pts | 29 vs. Auburn |
| Low 4Q Pts | 16 vs. Campbell |
| Most Opp. 4Q Pts | 19 vs. Auburn |
| Low Opp. 4Q Pts | 10 vs. Campbell |
| Most 2nd Half Pts | 48 vs. Auburn |
| Low 2nd Half Pts | 32 vs. Campbell |
| Most Opp. 2nd Half Pts | 38 vs. Auburn |
| Low Opp. 2nd Half Pts | 22 vs. Campbell |

PLAYER NOTES

#0 VANESSA BLAGMON

- Currently sitting out until the second semester due to NCAA Transfer rules.

#1 MARIAH ADAMS

- Played 22 minutes off the bench against Campbell.
- Dished out a career-high six assists against Auburn.

#2 JORDAN BAILEY

- Saw first collegiate minutes against Campbell.

#3 AJAH WAYNE

- Led the team with 16 pts, 8 rebs and 3 steals in win over Campbell.
- Recorded a career-high 35 points against Auburn.
- C-USA POW 11/18.

#4 AZIAH HUDSON

- Played 29 minutes off the bench in win over Campbell.

#5 VICTORIA MORRIS

- Put up a season-high 20 points at Auburn.
- Currently top-10 in the league in 3-point field goal percentage and 3-point field goals made.

#11 TAYLOR EDWARDS

- Put together 12 pts, 2 steals, 7 rebs and 1 assist in win over Campbell, which she started.
- She's compiled nine assists in the last two games, which is good for 9th in the league.

#12 AMAYA REGISTER

- Saw first collegiate minutes against Campbell after sitting out 2018-19 with a torn ACL.
- Recorded her first collegiate points against Auburn; put up 9 pts in that game.
- In just her third collegiate game, notched a career-high 16 points against Winthrop.

#14 DEJAH CARTER

- Played 5 minutes in the season-opening win over Campbell.

#20 MAGGIE ROBINSON

- Sitting out the 2019-20 season with a torn ACL.

#23 AMARI YOUNG

- Led the team with 16 pts, 8 rebs, 5 steals and 2 assists in win over Campbell.
- Posted a career-high (5) steals over Campbell.

#24 MACKENZIE SMITH

- Sitting out the 2019-20 season with a torn ACL.

#25 ASHLEY SCOTT

- Made her second-straight career start at Auburn with 21 minutes played.
- Recorded her first points of the season (2) against Winthrop.

#31 MARIE REICHERT

- Saw first collegiate minutes off the bench in win over Campbell.
- After a career-high 11 points against Winthrop, Reichert is now averaging 6.3 ppg.

2019-20 CONFERENCE USA STANDING

| TEAM (OVERALL) | C-USA |
|------------------------|-------|
| Charlotte (4-0) | 0-0 |
| ODU (3-0) | 0-0 |
| Southern Miss (4-1) | 0-0 |
| WKU (3-1) | 0-0 |
| UTEP (3-1) | 0-0 |
| UTSA (3-1) | 0-0 |
| Middle Tennessee (3-1) | 0-0 |
| LA Tech (2-1) | 0-0 |
| FAU (2-2) | 0-0 |
| Marshall (3-2) | 0-0 |
| UAB (2-2) | 0-0 |
| North Texas (2-2) | 0-0 |
| Rice (2-2) | 0-0 |
| FIU (1-3) | 0-0 |

McCray All-Time Opponents

| SCHOOL | Record |
|----------------------|--------|
| Albilene Christian | 0-1 |
| Auburn | 1-0 |
| Campbell | 2-0 |
| Charlotte | 0-4 |
| Cincinnati | 1-1 |
| Coppin State | 2-0 |
| Duke | 0-1 |
| FAU | 4-0 |
| FIU | 2-0 |
| George Mason | 0-1 |
| Hampton | 0-1 |
| Jacksonville | 1-0 |
| LA Tech | 1-1 |
| Liberty | 0-1 |
| Longwood | 1-0 |
| Marshall | 2-1 |
| Middle Tennessee | 1-1 |
| NC State | 0-2 |
| Norfolk State | 1-0 |
| North Texas | 1-2 |
| Oakland | 0-1 |
| Rice | 0-3 |
| Richmond | 0-1 |
| Saint Mary's College | 0-1 |
| South Carolina State | 1-0 |
| Southern Miss | 2-0 |
| St. Francis PA | 0-1 |
| Tennessee Tech | 1-0 |
| Tulane | 1-0 |
| UAB | 0-2 |
| UTEP | 2-0 |
| UTSA | 2-1 |
| VCU | 1-1 |
| Villanova | 0-1 |
| Virginia | 1-0 |
| William & Mary | 1-1 |
| Winthrop | 1-0 |
| WKU | 0-3 |

GAME NOTES

GAME ONE

ODU 59 CAMPBELL 44

- Amari Young: 16 pts, 8 rebs, 5 steals, 2 asts
- Career-high steals for Young
- Ajah Wayne: 16 pts, 8 rebs, 3 steals
- 15 points off the bench
- Two new faces saw the floor
 - Amaya Register, Marie Reichert
- Allowed just two three-pointers from Campbell

GAME TWO

ODU 89 AUBURN 77

- First win over a Power 5 team since 2014-15 season
- Ajah Waynes 35 points was the first 30+ game from a Monarch since Jennie Simms on March 9, 2017 against Southern Miss
- Mariah Adams dished out a career-high 6 assists.
- The Monarchs posted a program-record 14 single-game 3- pointers.

GAME THREE

ODU 68 WINTHROP 44

- Led by sophomore Amaya Register who put up 16 points.
- Shot 38.5% from field goal range.
- Career-high was set from freshman Marie Reichert.

GAME FOUR

ODU AT VIRGINIA

NIKKI MCCRAY-PENSON



Experience: Third season at ODU (third season overall)

Alma Mater: Tennessee '95

All-Time Record: 30-34 (.468)

C-USA Record: 16-16 (.500)

McCray Year-by-Year

| YEAR | OVERALL | CONF. | NOTES |
|---------|---------|-------|------------------|
| 2017-18 | 8-23 | 6-10 | |
| 2018-19 | 21-11 | 10-6 | WNIT First Round |

CAREER TIMELINE

COACHING HISTORY

OLD DOMINION, Head Coach (2017-present)

- Posted an 8-23 record in her first season

SOUTH CAROLINA, Assistant Coach (2008-17)

- 2017 National Champions

- 3x SEC Tournament Champions (2015-17)

WKU, Assistant Coach (2006-08)

- 2008 Sun Belt Tournament Champions

PLAYING HISTORY

WNBA (1998-06)

- Played for five different teams

- 3x WNBA All-Star

ABL (1996-98)

- 1997 ABL MVP (1997)

- 1997 ABL Championship

USA BASKETBALL (1993, 1995-96, 1998-00)

- 2x Gold Medalist in '96 (Atlanta) & '00 (Sydney)

- Gold Medal in 1998 World Championship

TENNESSEE (1991-95)

- Lady Vols Hall Of Fame Inductee (2004)

- 2x All-American

- 2x SEC Player of the Year

HALL OF FAMES

- Women's Basketball Hall Of Fame (2012)

- National High School Hall Of Fame (2015)

- Tennessee Lady Vols Hall Of Fame (2004)

- Greater Knoxville Sports Hall Of Fame (2014)

EDUCATION

University Of Tennessee ('95)

Bachelor Of Science In Sports Marketing

Nikki McCray-Penson is in her third season as the head coach of ODU women's basketball in 2019-20.

In 2018-19, Old Dominion posted one of the biggest turnarounds not only in program history, but in the nation, in McCray's second season. The Monarchs went 21-11, marking a 13-win improvement from the previous season. The 13+ win mark was the sixth-highest in the NCAA in 2018-19 and the second-best in program history. With the 21 wins, ODU earned an at-large bid to the WNIT, the program's seventh appearance in the WNIT and first postseason appearance since 2015. McCray also guided ODU to a nearly 15-point improvement offensively from a season ago, as the Monarchs increased their scoring average from 54.6 in 2017-18 to 68.5 in 2018-19. McCray achieved all of this, despite having the seventh youngest roster in the country entering the season. Individually, McCray helped coach Victoria Morris to Second Team All-Conference USA honors and Ajah Wayne to C-USA All-Freshman and All-Defensive Team honors.

In 2017-18, McCray and the Monarchs compiled an 8-23 record and fell in the opening round of the Conference USA Tournament. Individual highlights for ODU in 2017-18 included Victoria Morris' sensational freshman season, as Morris was named to the C-USA All-Freshman Team and ranked fifth amongst all freshmen in the nation in threes made per game, along with Kelly Loftus joining the 1,000 career point club.

McCray-Penson, who previously served as an assistant coach at South Carolina since May of 2008, helped lead South Carolina to its first-ever National Championship. A two-time Olympic gold medal winner and Women's Basketball Hall of Fame inductee in 2012, McCray-Penson reunited with her former 1996 Team USA teammate when she joined head coach Dawn Staley's South Carolina staff as an assistant in May of 2008.

Following an 11-year professional playing career, McCray-Penson moved into the coaching ranks in 2006, spending two seasons at Western Kentucky before joining the Gamecocks. A three-time WNBA All-Star and the 1996-97 American Basketball League's Most Valuable Player, McCray-Penson has proven to be a standout recruiter who helped South Carolina land the nation's No. 2 recruiting class and the top player in the country in 2014.

South Carolina earned four straight NCAA Tournament No. 1 seeds, the program's first coming in 2014. Appearing in the event's Sweet 16 in five of the last six seasons, the Gamecocks reached their first NCAA Final Four in 2015. South Carolina capped the 2016-17 season with its best final national ranking, coming in at No. 1 in the USA Today Coaches Poll. The Gamecocks finished among the nation's top 10 each of the past four seasons.

McCray-Penson takes over the reign of one of the most storied women's basketball programs in college basketball. The Lady Monarchs have over 1,000 program wins, three national championships, 25 NCAA Tournament appearances, 17 conference championships and 55 All-Americans.

McCray-Penson got her start in coaching at Western Kentucky where she played a key role in recruiting. With her on the staff, she helped lead the Lady Toppers to a 49-17 record, which included a WNIT semifinal appearance in 2006-07 and a Sun Belt Tournament title and a berth in the NCAA Tournament in 2007-08.

Prior to moving into the coaching world, McCray-Penson enjoyed a nine-year career in the WNBA, following a two-year stint in the ABL. She signed her first professional playing contract with the ABL's Columbus Quest in 1996 and proceeded to lead the team to the league championship, earning league MVP honors along the way. Joining the WNBA's Washington Mystics in 1998, McCray-Penson was the team's leading scorer in each of her first two seasons and played in the WNBA All-Star game three times in her four years in Washington. She earned a starting spot in the league's inaugural All-Star game in 1999 and was the leading vote-getter among Eastern Conference guards in 2000.

McCray-Penson went on to play five more seasons in the WNBA, spending two with the Indiana Fever and one each with the Phoenix Mercury, the San Antonio Silver Stars and the Chicago Sky prior to her retirement at the end of the 2006 season. With 2,528 points, she finished her career ranked 24th on the WNBA's career scoring list. Averaging 10.1 points per game, she was a career 41.3 percent shooter.

A veteran of international basketball as well, McCray-Penson was part of the USA Basketball program on three separate occasions. Those stints were highlighted by trips to the Olympic Games in 1996 and 2000, both of which resulted in gold medals for the United States. She was a key element on the 1995-96 team that spent more than a year together in residency, something never done before in USA Basketball's history. The effort helped the group to 60-0 record in international competition and sparked two professional women's basketball leagues in the United States.

In her four-year career playing under Pat Summitt at Tennessee, McCray-Penson keyed three SEC regular-season titles, two conference tournament championships and four NCAA Tournament appearances for the Lady Vols. In addition to helping UT build a 122-11 record, McCray-Penson picked up All-America and SEC Player of the Year honors in both her junior and senior years. She scored 1,572 career points, a number that still ranks her among the Lady Vols' all-time top 15.

McCray-Penson graduated from Tennessee in 1995 with a Bachelor of Science in Education. She is married to Thomas Penson, and they have a son, Thomas Nikson Penson.



#11 TAYLOR EDWARDS

GUARD | SENIOR | 5-9
PORTSMOUTH, VIRGINIA
WOODROW WILSON

BIOGRAPHY

2018-19 (JR):

Played in all 32 games, making 30 starts ... The team's primary point guard ... Averaged 11.4 points, 5.0 rebounds, 4.3 assists and 1.5 steals ... Led the team and ranked fourth in Conference USA in assists ... Had 15 games with 5+ assists (ODU went 12-3 in those contests) ... Recorded 20 double-figure scoring games and two games with a season-high 20 points ... Scored 20 in the C-USA Tournament quarterfinal loss to Western Kentucky ... Shot 47.6 percent from the field ... Went 6-for-30 from beyond the arc after entering the season without a three-pointer made in her career ... Named to the Tulane Classic All-Tournament Team after averaging 13.5 in the two games ... Nearly recorded a triple-double against Jacksonville with 16 points, 10 assists and eight rebounds ... Improved her scoring average by nearly four points from 7.6 to 11.4 points per game.

2017-18 (SO):

Posted a breakout season as a sophomore ... Played in all 31 games, making eight starts ... Increased her scoring by over seven points from 0.4ppg as a freshman to 7.6ppg as a sophomore ... Led the team in rebounding (6.0ppg) and field goal percentage (49.7%) as a guard ... Also led team in steals with 2.0spg and ranked sixth in the conference in league play with 2.1spg ... Had 2+ steals in 19 of the 31 games, including a career-high eight against Florida Atlantic ... Posted eight double-figure scoring games and five double-digit rebounding games ... Notched three double-doubles, which led the team ... Scored a season-high 19 points vs. UTSA and hauled in a season-high 15 rebounds against South Carolina State.

2016-17 (FR):

Played in seven games during her true freshman season ... Scored her first career points with two free throws against FIU ... Also scored a point against Rice ... Recorded an assist in the first three games of her career, including at Duke.

PREP:

Played for Woodrow Wilson High School in Portsmouth under veteran head coach Roger Smith ... Averaged 16.6 ppg, 9.5 rpg, 8.5 apg and 3.3 spg her senior year ... Scored over 1,000 points in her career ... A two-time conference player of the year ... Named to the 4A All-State First Team as a senior and Second Team as a junior ... A two-time All-Tidewater selection ... Ranked in the top 50 at her position by ESPNW.

PERSONAL:

Daughter of Andrea Edwards and Marvin Hines ... Lists the Chicago Bulls and Cleveland Cavaliers as her favorite teams and Kyrie Irving and LeBron James as her favorite players.

OLD DOMINION Individual Game-by-Game (as of Nov 22, 2019)

#11 Edwards, Taylor

| Opponent | Date | gs | min | Total | | 3-Pointers | | Free throws | | Rebounds | | | pf | a | t/o | blk | stl | pts | avg | |
|-----------|----------|----|-----|--------|------|------------|------|-------------|------|----------|-----|-----|-----|---|-----|-----|-----|-----|-----|------|
| | | | | fg-fga | pct | 3fg-fga | pct | ft-fa | pct | off | def | tot | | | | | | | | avg |
| CAMPBELL | 11/08/19 | * | 24 | 4-8 | .500 | 0-1 | .000 | 4-8 | .500 | 2 | 5 | 7 | 7.0 | 4 | 1 | 2 | 0 | 2 | 12 | 12.0 |
| at Auburn | 11/14/19 | * | 25 | 5-7 | .714 | 2-3 | .667 | 0-1 | .000 | 0 | 2 | 2 | 4.5 | 2 | 5 | 4 | 0 | 1 | 12 | 12.0 |
| WINTHROP | 11/20/19 | * | 20 | 2-9 | .222 | 0-2 | .000 | 1-2 | .500 | 3 | 3 | 6 | 5.0 | 3 | 4 | 4 | 1 | 1 | 5 | 9.7 |
| Totals | | 3 | 69 | 11-24 | .458 | 2-6 | .333 | 5-11 | .455 | 5 | 10 | 15 | 5.0 | 9 | 10 | 1 | 4 | 29 | 9.7 | |

Games played: 3
Minutes/game: 23.0
Points/game: 9.7
FG Pct: 45.8
3FG Pct: 33.3
FT Pct: 45.5

Rebounds/game: 5.0
Assists/game: 3.3
Turnovers/game: 3.3
Assist/turnover ratio: 1.0
Steals/game: 1.3
Blocks/game: 0.3

2019-20 SEASON HIGHS

POINTS: 12, 2x vs. Campbell 11/8/19, vs. Auburn 11/14/19
REBOUNDS: 7, vs. Campbell 11/8/19
FGM: 5, vs. Auburn 11/14/19
3FGM: 2, vs. Auburn 11/14/19
FTM: 4, vs. Campbell 11/8/19
ASSISTS: 5, vs. Auburn 11/14/19
BLOCKS: 1, vs. Winthrop 11/20/19
STEALS: 2, vs. Campbell 11/8/19
MINUTES: 25, vs. Auburn 11/14/19

CAREER HIGHS

POINTS: 20, vs. VCU, 12/8/18
REBOUNDS: 15, vs. South Carolina State, 12/30/17
FGM: 8, 3x, last vs. WKU, 3/14/19
3FGM: 2, 2x, last vs. FAU, 2/10/19
FTM: 8, vs. Middle Tennessee, 2/9/19
ASSISTS: 10, vs. Jacksonville, 11/24/18
BLOCKS: 2, vs. Longwood, 3/4/19
STEALS: 8, vs. FAU, 2/14/18
MINUTES: 40, vs. Jacksonville, 11/24/18

CAREER STATS

| Season | gp-gs | min/avg | Total | | 3-Point | | F-Throws | | Rebounds | | | | Scoring | | | | | | | |
|---------|-------|-----------|---------|------|---------|------|----------|------|----------|-----|-----|-----|---------|----|-----|-----|-----|-----|-----|------|
| | | | fg-fga | pct | fg-fga | pct | ft-fa | pct | off | def | tot | avg | pf | fo | ast | to | blk | stl | pts | avg |
| 2016-17 | 7-0 | 20/2.9 | 0-7 | .000 | 0-0 | .000 | 3-4 | .750 | 1 | 0 | 1 | 0.1 | 6 | 0 | 3 | 5 | 0 | 0 | 3 | 0.4 |
| 2017-18 | 31-8 | 764/24.6 | 97-195 | .497 | 0-1 | .000 | 41-94 | .436 | 56 | 131 | 187 | 6.0 | 94 | 8 | 64 | 65 | 7 | 62 | 235 | 7.6 |
| 2018-19 | 32-30 | 904/28.3 | 136-286 | .476 | 6-30 | .200 | 88-160 | .550 | 37 | 124 | 161 | 5.0 | 83 | 1 | 139 | 85 | 7 | 47 | 366 | 11.4 |
| 2019-20 | 3-3 | 69/23.0 | 11-24 | .458 | 2-6 | .333 | 5-11 | .455 | 5 | 10 | 15 | 5.0 | 9 | 0 | 10 | 10 | 1 | 4 | 29 | 9.7 |
| TOTAL | 73-41 | 1757/24.1 | 244-512 | .477 | 8-37 | .216 | 137-269 | .509 | 99 | 265 | 364 | 5.0 | 192 | 9 | 216 | 165 | 15 | 113 | 633 | 8.7 |



#20 MAGGIE ROBINSON

FORWARD | SENIOR | 6-0
 MOBILE, ALABAMA
 W.P. DAVIDSON HIGH SCHOOL
 SHELTON STATE CC

OUT 2019-20 SEASON WITH TORN ACL

BIOGRAPHY

2018-19 (JR):

The junior college transfer made an immediate impact at ODU, playing in all 32 games and making 31 starts at forward ... Averaged 7.1 points and 4.1 rebounds ... Recorded nine double-figure scoring games, including a season-high 17 against 13th-ranked NC State ... Reached double figures in four conference games against FIU, FAU, North Texas and Charlotte ... Drilled a season-high four three-pointers in the game against Charlotte ... Hauled in a season-high 11 rebounds at Cincinnati ... Also hit the go-ahead three with 1:05 remaining in overtime in that

win at Cincy ... Played 20+ minutes in all but seven games.

AT SHELTON STATE CC:

Helped guide Shelton State to back-to-back NJCAA Final Four appearances and ACCC Championships ... Averaged 12 points and 7.5 rebounds in 2017-18 ... Led her conference in FG percentage, FT percentage, defensive rebounding and total rebounding ... An All-ACCC North First Team selection and also named to the NJCAA All-Tournament Team ... A two-time NJCAA All-Academic First Team selection and graduated Summa Cum Laude with a 4.0 GPA.

PREP:

An All-Area and All-County selection at W.P. Davidson High School in Alabama ... Named to the All-State Third Team ... Also earned All-County honors in softball.

PERSONAL:

Daughter of Mike and Linda Robinson ... Chose ODU for its balance between school and basketball as well as the very welcoming and caring atmosphere ... Hobbies include going to the beach and collecting shoes.

CAREER HIGHS

POINTS: 17, vs. NC State, 12/02/18
 REBOUNDS: 11, vs. Cincinnati, 11/12/18
 FGM: 4, vs. Charlotte, 2/16/19
 3FGM: 4, vs. Charlotte, 2/16/19
 FTM: 4, vs. LA Tech, 1/17/19
 ASSISTS: 4, vs. Charlotte, 2/23/19
 BLOCKS: 1, 6x, last vs. FAU, 3/13/19
 STEALS: 2, 4X, last vs. FAU, 3/13/19
 MINUTES: 36, 2x, last vs. VCU, 12/16/18

CAREER STATS

| Season | gp-gs | min/avg | Total | | 3-Point | | F-Throws | | Rebounds | | | | Scoring | | | | | | | |
|---------|-------|----------|--------|------|---------|------|----------|------|----------|-----|-----|-----|---------|----|-----|----|-----|-----|-----|-----|
| | | | fg-fga | pct | fg-fga | pct | ft-fa | pct | off | def | tot | avg | pf | fo | ast | to | blk | stl | pts | avg |
| 2018-19 | 32-31 | 791/24.7 | 77-230 | .335 | 40-149 | .268 | 32-46 | .696 | 48 | 84 | 132 | 4.1 | 71 | 0 | 31 | 41 | 6 | 18 | 226 | 7.1 |
| TOTAL | 32-31 | 791/24.7 | 77-230 | .335 | 40-149 | .268 | 32-46 | .696 | 48 | 84 | 132 | 4.1 | 71 | 0 | 31 | 41 | 6 | 18 | 226 | 7.1 |



#25 ASHLEY SCOTT

CENTER | SENIOR | 6-3
MOBILE, ALABAMA
UMS WRIGHT PREP
SHELTON STATE CC

BIOGRAPHY

2018-19 (JR):

One of ODU's top rebounders ... Played in 29 of the 32 games ... Averaged 0.4 points and 3.3 rebounds in 10.2 minutes per game ... Recorded four games with eight or more rebounds, including 12 boards against both Middle Tennessee and FAU ... Had 11 offensive rebounds in that game against FAU ... Made one start on the season, which came in the Tulane Classic Championship against Saint Mary's (had two steals and six boards in that game) ... Scored a season-high four points vs. Middle Tennessee.

AT SHELTON STATE CC:

Helped guide Shelton State to back-to-back NJCAA Final Four appearances and ACCC Championships ... Averaged 3 points and 6 rebounds while shooting over 60 percent from the field in 2017-18.

PREP:

An All-State performer at UMS-Wright Preparatory School ... Averaged 15 points and 15 rebounds during her senior season and was a finalist for the 4A State Player of the Year ... Totaled over 1,000 points and 1,500 rebounds in her high school career ... Off the court, volunteered weekly at her local church, Christ United Methodist Church.

PERSONAL:

Daughter of Monique and Gerald Scott.

2019-20 SEASON HIGHS

POINTS: 2, vs. Winthrop 11/20/19
REBOUNDS: 3, vs. Winthrop 11/20/19
FGM: 1, vs. Winthrop
3FGM: 0
FTM: 0
ASSISTS: 1, vs. Winthrop 11/20/19
BLOCKS: 1, vs. Campbell 11/8/19
STEALS: 0
MINUTES: 21, vs. Auburn 11/14/19

CAREER HIGHS

POINTS: 4, vs. Middle Tennessee, 2/9/19
REBOUNDS: 12, 2x, last vs. FAU, 3/13/19
FGM: 2, vs. Middle Tennessee 2/9/19
3FGM: N/A
FTM: 1, vs. Campbell, 11/6/18
ASSISTS: 1, 6x, last vs. Middle Tennessee, 2/9/19
BLOCKS: 1, 5x, last vs. Villanova, 3/22/19
STEALS: 2, vs. Saint Mary's, 12/22/18
MINUTES: 30, vs. Middle Tennessee, 2/9/19

OLD DOMINION Individual Game-by-Game (as of Nov 22, 2019)

All games

#25 Scott, Ashley

| Opponent | Date | gs | min | Total | | 3-Pointers | | Free throws | | Rebounds | | | | pf | a | t/o | blk | stl | pts | avg |
|-----------|----------|----|-----|--------|-------|------------|------|-------------|------|----------|-----|-----|-----|----|---|-----|-----|-----|-----|-----|
| | | | | fg-fga | pct | 3fg-fga | pct | ft-fa | pct | off | def | tot | avg | | | | | | | |
| CAMPBELL | 11/08/19 | * | 5 | 0-0 | .000 | 0-0 | .000 | 0-0 | .000 | 0 | 2 | 2 | 2.0 | 0 | 0 | 0 | 1 | 0 | 0 | 0.0 |
| at Auburn | 11/14/19 | * | 21 | 0-0 | .000 | 0-0 | .000 | 0-0 | .000 | 2 | 0 | 2 | 2.0 | 3 | 0 | 1 | 0 | 0 | 0 | 0.0 |
| WINTHROP | 11/20/19 | * | 12 | 1-1 | 1.000 | 0-0 | .000 | 0-0 | .000 | 3 | 0 | 3 | 2.3 | 1 | 1 | 0 | 1 | 0 | 2 | 0.7 |
| Totals | | | 38 | 1-1 | 1.000 | 0-0 | .000 | 0-0 | .000 | 5 | 2 | 7 | 2.3 | 4 | 1 | 1 | 2 | 0 | 2 | 0.7 |

Games played: 3
 Minutes/game: 12.7
 Points/game: 0.7
 FG Pct: 100.0

Rebounds/game: 2.3
 Assists/game: 0.3
 Turnovers/game: 0.3
 Assist/turnover ratio: 1.0
 Blocks/game: 0.7

CAREER STATS

| Season | gp-gs | min/avg | Total | | 3-Point | | F-Throws | | Rebounds | | | | Scoring | | | | | | | |
|---------|-------|----------|--------|-------|---------|------|----------|------|----------|-----|-----|-----|---------|----|-----|----|-----|-----|-----|-----|
| | | | fg-fga | pct | fg-fga | pct | ft-fa | pct | off | def | tot | avg | pf | fo | ast | to | blk | stl | pts | avg |
| 2018-19 | 29-1 | 295/10.2 | 6-14 | .429 | 0-0 | .000 | 1-6 | .167 | 51 | 44 | 95 | 3.3 | 44 | 0 | 6 | 11 | 5 | 4 | 13 | 0.4 |
| 2019-20 | 3-3 | 38/12.7 | 1-1 | 1.000 | 0-0 | .000 | 0-0 | .000 | 5 | 2 | 7 | 2.3 | 4 | 0 | 1 | 1 | 2 | 0 | 2 | 0.7 |
| TOTAL | 32-4 | 333/10.4 | 7-15 | .467 | 0-0 | .000 | 1-6 | .167 | 56 | 46 | 102 | 3.2 | 48 | 0 | 7 | 12 | 7 | 4 | 15 | 0.5 |



#5 VICTORIA MORRIS

GUARD | JUNIOR | 5-8
CINCINNATI, OHIO
NORTH COLLEGE HILL

BIOGRAPHY

2018-19 (SO):

A Second Team All-Conference USA selection ... Averaged a team-leading 12.8 points to go along with 2.3 rebounds and 1.3 assists, despite missing eight games due to a right foot injury late in the season ... Became just the third player in program history to lead ODU in scoring in both their freshman and sophomore seasons, joining All-Americans Celeste Hill and Nancy Lieberman ... Led the team in threes made with 60 ... Averaged 2.5 three-pointers per game, which ranked 65th in the nation and third in C-USA ... Upped her scoring average to 14.2 in conference play ... Registered six 20+ scoring games, including a season-high 24 at LA Tech ... Also poured in 23 in the OT win at Cincinnati in her hometown and in front of hundreds of her friends and family ... Led ODU with 21 points in the OT loss to Villanova in the WNIT ... Scored 20+ points in three consecutive games vs. FIU, FAU and LA Tech, becoming the first player to accomplish that feat since Jennie Simms in 2016-17.

2017-18 (FR):

Named to the Conference USA All-Freshman Team ... Became the first ODU freshman to lead the team in scoring (11.0ppg) since Celeste Hill in 1990-91 ... Her 340 points were the sixth-most by an ODU freshman in program history ... A three-time C-USA Freshman of the Week honoree (Nov. 27, Dec. 26, Feb. 5) ... One of the top freshman three-point shooters in the nation ... Ranked fifth amongst all freshmen in the nation in threes made per game (2.55 3PT per game) ... Averaged 11.0 points, 2.4 rebounds and 1.4 assists per game ... Led the team with 20 double-figure scoring games, including three with 20+ ... Scored a season-high 24 points against FIU ... Notched five games with 5+ threes made, including a season-high six against LA Tech and FIU.

PREP:

Averaged 21.0 points, 5.0 assists and 3.7 steals during her senior season at North College Hill High School ... All-Miami Valley Conference selection ... Led the conference in scoring and ranked second in assists ... During her sophomore season, Morris was the MVC Player of the Year after averaging a league-leading 20.5 points per game ... For her career, she was a three-time All-City and All-MVC selection, and was also named team MVP three times ... Graduated as the all-time leading scorer at North College Hill with over 1,500 career points ... Played AAU ball for All-Ohio EYBL, one of the top AAU programs in the Ohio circuit.

PERSONAL:

Became the first official commitment for head coach Nikki McCray, signing on June 17, 2017, less than a month after McCray was announced as head coach.

2019-20 SEASON HIGHS

POINTS: 20, vs. Auburn 11/14/19
REBOUNDS: 5, vs. Campbell 11/8/19
FGM: 6, vs. Auburn 11/14/19
3FGM: 5, vs. Auburn 11/14/19
FTM: 3, vs. Auburn 11/14/19
ASSISTS: 2, 2x vs. Winthrop 11/20/19, Auburn 11/14/19
BLOCKS: 0
STEALS: 0
MINUTES: 29, vs. Auburn 11/14/19

CAREER HIGHS

POINTS: 24, 2x, vs. FIU 2/2/18, vs. LA Tech 1/17/19
REBOUNDS: 7, vs. NC State, 12/2/18
FGM: 9, vs. FIU, 2/2/18
3FGM: 6, 2x, vs. LA Tech 1/26/18, vs. FIU 2/2/18
FTM: 5, 2x, vs. Oakland 12/21/17, vs. Cincinnati 11/12/18
ASSISTS: 4, 2x, vs. Marshall 1/18/18, vs. LA Tech 1/17/19
BLOCKS: 1, 6x last vs. Marshall, 1/3/19
STEALS: 2, 8x, last vs. North Texas, 1/31/19
MINUTES: 39, 3x, last vs. UTEP 2/17/18

OLD DOMINION Individual Game-by-Game (as of Nov 22, 2019) All games

#05 Morris, Victoria

| Opponent | Date | gs | min | Total | | 3-Pointers | | Free throws | | Rebounds | | | | pf | a | t/o | blk | stl | pts | avg | |
|-----------|----------|----|-----|--------|-------|------------|------|-------------|------|----------|-----|-----|-----|-----|---|-----|-----|-----|-----|------|------|
| | | | | fg-fga | pct | 3fg-fga | pct | ft-fa | pct | off | def | tot | avg | | | | | | | | |
| CAMPBELL | 11/08/19 | * | 23 | 0-11 | .000 | 0-3 | .000 | 0-0 | .000 | 0 | 5 | 5 | 0 | 1 | 0 | 1 | 0 | 0 | 0 | 0.0 | |
| at Auburn | 11/14/19 | * | 28 | 6-11 | .545 | 5-9 | .556 | 3-5 | .600 | 0 | 2 | 2 | 3.5 | 4 | 2 | 1 | 0 | 0 | 20 | 10.0 | |
| WINTHROP | 11/20/19 | * | 26 | 4-8 | .500 | 3-5 | .600 | 0-0 | .000 | 1 | 2 | 3 | 3.3 | 0 | 2 | 1 | 0 | 0 | 11 | 10.3 | |
| Totals | | | 3 | 77 | 10-30 | .333 | 8-17 | .471 | 3-5 | .600 | 1 | 9 | 10 | 3.3 | 5 | 4 | 3 | 0 | 0 | 31 | 10.3 |

Games played: 3
Minutes/game: 25.7
Points/game: 10.3
FG Pct: 33.3
3FG Pct: 47.1
FT Pct: 60.0

Rebounds/game: 3.3
Assists/game: 1.3
Turnovers/game: 1.0
Assist/turnover ratio: 1.3

CAREER STATS

| Season | gp-gs | min/avg | Total | | 3-Point | | F-Throws | | Rebounds | | | | Scoring | | | | | | | |
|---------|-------|-----------|---------|------|---------|------|----------|------|----------|-----|-----|-----|---------|----|-----|----|-----|-----|-----|------|
| | | | fg-fga | pct | fg-fga | pct | ft-fa | pct | off | def | tot | avg | pf | fo | ast | to | blk | stl | pts | avg |
| 2017-18 | 31-30 | 1017/32.8 | 115-353 | .326 | 79-249 | .317 | 31-40 | .775 | 19 | 54 | 73 | 2.4 | 64 | 1 | 42 | 36 | 4 | 17 | 340 | 11.0 |
| 2018-19 | 24-21 | 609/25.4 | 104-297 | .350 | 60-174 | .345 | 40-61 | .656 | 8 | 47 | 55 | 2.3 | 48 | 1 | 32 | 35 | 2 | 16 | 308 | 12.8 |
| 2019-20 | 3-3 | 77/25.7 | 10-30 | .333 | 8-17 | .471 | 3-5 | .600 | 1 | 9 | 10 | 3.3 | 5 | 0 | 4 | 3 | 0 | 0 | 31 | 10.3 |
| TOTAL | 58-54 | 1703/29.4 | 229-680 | .337 | 147-440 | .334 | 74-106 | .698 | 28 | 110 | 138 | 2.4 | 117 | 2 | 78 | 74 | 6 | 33 | 679 | 11.7 |



#14 DEJAH CARTER

FORWARD | JUNIOR | 6-2

CHESTERFIELD, VIRGINIA

COSBY

BIOGRAPHY

2018-19 (SO):

Posted one of the biggest improvements on the roster from last season ... Played in all but one game, making 28 starts at forward ... Averaged 5.2 points and 4.3 rebounds, while shooting 62.5 percent from the field ... Recorded seven double-figure scoring games, including a season-high 20 in the Buccaneer Classic Championship ... Named the Buccaneer Classic MVP, averaging 16.0 points and 8.0 rebounds in ODU's two wins ... Scored 14 points on the road against both Southern Miss and North Texas, season highs for Carter during conference play ... Improved her scoring average by four points from last season.

2017-18 (FR):

Played in 29 games off the bench during her true freshman season ... Averaged 1.2 points and 1.7 rebounds ... Scored a season-high five points against North Texas ... Hauled in a season-high seven rebounds against St. Francis ... Played a season-high 17 minutes against 16th-ranked Duke, finishing that game with two points and three rebounds.

PREP:

Averaged 12.5 points, 13.6 rebounds and 2.5 blocks per game as a senior at Cosby ... Selected to First Team All-Conference 3, First Team All-Region 6A South and Second Team All-State Class 6A ... Selected to participate in the VHSCA All-Star Game after her senior season ... Also played volleyball for Cosby High, helping them earn the Conference 3 title ... Prior to transferring to Cosby High, played three seasons at Graham High School in Bluefield ... Joined BWSL-Richmond and Coach Mike Davis in 2016, helping them win Virginia's AAU championship.

PERSONAL:

Daughter of Greg & Michelle Carter and Melinda Jackson ... Has two older siblings, Xavier and Braxton Mutter and two younger siblings, Olivia and Alexander Carter ... Hobbies include music and art ... Majoring in Physical Education with a concentration in Exercise Science.

2019-20 SEASON HIGHS

POINTS: 0
 REBOUNDS: 3, vs. Campbell 11/8/19
 FGM: 0
 3FGM: 0
 FTM: 0
 ASSISTS: 0
 BLOCKS: 0
 STEALS: 0
 MINUTES: 10, vs. Winthrop 11/20/19

CAREER HIGHS

POINTS: 20, vs. Tennessee Tech, 11/25/18
 REBOUNDS: 9, vs. Campbell, 11/6/18
 FGM: 8, 2x, Longwood 3/4/19, Tennessee Tech 11/25/18
 3FGM: 1, vs. Marshall, 3/2/19
 FTM: 6, vs. Southern Miss, 1/19/19
 ASSISTS: 1, 6x, last vs. Longwood, 3/4/19
 BLOCKS: 4, vs. Rice, 1/28/18
 STEALS: 3, 2x, Longwood 3/4/19, Tulane, 12/21/18
 MINUTES: 31, vs. Tulane, 12/21/18

OLD DOMINION Individual Game-by-Game (as of Nov 22, 2019) All games

#14 Carter, Dejah

| Opponent | Date | gs | min | Total | | 3-Pointers | | Free throws | | Rebounds | | | | pf | a | t/o | blk | stl | pts | avg |
|-----------|----------|----|-----|--------|------|------------|------|-------------|------|----------|-----|-----|-----|----|---|-----|-----|-----|-----|-----|
| | | | | fg-fga | pct | 3fg-fga | pct | ft-fa | pct | off | def | tot | avg | | | | | | | |
| CAMPBELL | 11/08/19 | 5 | 0-3 | .000 | 0-0 | .000 | 0-0 | .000 | 1 | 2 | 3 | 3.0 | 3 | 0 | 2 | 0 | 0 | 0 | 0 | 0.0 |
| at Auburn | 11/14/19 | 2 | 0-0 | .000 | 0-0 | .000 | 0-0 | .000 | 0 | 0 | 0 | 1.5 | 1 | 0 | 0 | 0 | 0 | 0 | 0 | 0.0 |
| WINTHROP | 11/20/19 | 10 | 0-1 | .000 | 0-0 | .000 | 0-0 | .000 | 0 | 2 | 2 | 1.7 | 0 | 0 | 0 | 0 | 0 | 0 | 0 | 0.0 |
| Totals | | 0 | 17 | 0-4 | .000 | 0-0 | .000 | 0-0 | .000 | 1 | 4 | 5 | 1.7 | 4 | 0 | 2 | 0 | 0 | 0 | 0.0 |

Games played: 3
 Minutes/game: 5.7
 FG Pct: 0.0

Rebounds/game: 1.7
 Turnovers/game: 0.7

CAREER STATS

| Season | gp-gs | min/avg | Total | | 3-Point | | F-Throws | | Rebounds | | | | Scoring | | | | | | | |
|---------|-------|----------|--------|------|---------|------|----------|------|----------|-----|-----|-----|---------|----|-----|----|-----|-----|-----|-----|
| | | | fg-fga | pct | fg-fga | pct | ft-fa | pct | off | def | tot | avg | pf | fo | ast | to | blk | stl | pts | avg |
| 2017-18 | 29-0 | 256/8.8 | 12-30 | .400 | 0-0 | .000 | 10-18 | .556 | 17 | 31 | 48 | 1.7 | 47 | 1 | 0 | 19 | 8 | 5 | 34 | 1.2 |
| 2018-19 | 31-28 | 480/15.5 | 70-112 | .625 | 1-2 | .500 | 19-27 | .704 | 65 | 69 | 134 | 4.3 | 66 | 2 | 6 | 31 | 23 | 15 | 160 | 5.2 |
| 2019-20 | 3-0 | 17/5.7 | 0-4 | .000 | 0-0 | .000 | 0-0 | .000 | 1 | 4 | 5 | 1.7 | 4 | 0 | 0 | 2 | 0 | 0 | 0 | 0.0 |
| TOTAL | 63-28 | 753/12.0 | 82-146 | .562 | 1-2 | .500 | 29-45 | .644 | 83 | 104 | 187 | 3.0 | 117 | 3 | 6 | 52 | 31 | 20 | 194 | 3.1 |



#0 VANESSA BLAGMON

GUARD | REDSHIRT SOPHOMORE | 5-8

ATLANTA, GEORGIA

SOUTH FLORIDA

NORCROSS

SITTING OUT FALL 2019 DUE TO NCAA TRANSFER RULES

BIOGRAPHY

2018-19 (RFR):

Transferred from USF midseason ... Sat out season due to NCAA transfer rules ... Redshirted.

2019-20 SEASON HIGHS

POINTS: -
REBOUNDS: -
FGM: -
3FGM: -
FTM: -
ASSISTS: -
BLOCKS: -
STEALS: -
MINUTES: -

CAREER HIGHS

POINTS: -
REBOUNDS: -
FGM: -
3FGM: -
FTM: -
ASSISTS: -
BLOCKS: -
STEALS: -
MINUTES: -



#1 MARIAH ADAMS

GUARD | SOPHOMORE | 6-0
LITTLE ROCK, ARKANSAS
ESTEM

BIOGRAPHY

2018-19 (FR):

Averaged 4.8 points, 2.9 rebounds and 1.9 assists during her freshman season ... Played in all 32 games, making four starts ... Averaged 23.1 minutes per game ... Recorded five double-figure scoring games, including a season-high 13 against Saint Mary's in the Tulane Classic Championship ... Scored 11 points and dished out a season-high five assists against Coppin State ... Also reached double figures in C-USA games against UTSA and Charlotte, as well as against Longwood.

PREP:

A three-time All-State selection at eSTEM High School in Arkansas ... Helped guide her team to top-10 national

rankings in both her junior and senior seasons.

PERSONAL:

Chose ODU for its family environment and campus ... Enjoys rap music, especially Future ... Favorite athletes are LeBron James and Candace Parker ... Favorite food is chicken alfredo.

2019-20 SEASON HIGHS

POINTS: 8, vs. Winthrop
REBOUNDS: 5, vs. Winthrop
FGM: 3, 2x vs. Winthrop 11/20/19, Campbell 11/8/19
3FGM: 1, vs. Winthrop
FTM: 1, vs. Winthrop
ASSISTS: 6, vs. Auburn 11/14/19
BLOCKS: 1, vs. Auburn 11/14/19
STEALS: 1, vs. Winthrop
MINUTES: 26, vs. Auburn 11/14/19

CAREER HIGHS

POINTS: 13, vs. Saint Mary's, 12/22/18
REBOUNDS: 6, vs. Campbell, 11/6/18
FGM: 5, 2x, vs. Saint Mary's 12/22/18, UTSA 1/26/19
3FGM: 3, vs. Saint Mary's 12/22/18
FTM: 4, 3x, last vs. Longwood, 3/4/19
ASSISTS: 6, vs. Auburn 11/14/19
BLOCKS: 3, vs. Coppin State, 12/29/18
STEALS: 3, vs. Norfolk State, 11/9/18
MINUTES: 35, vs. UTSA, 1/26/19

OLD DOMINION Individual Game-by-Game (as of Nov 22, 2019) All games

#01 Adams, Mariah

| Opponent | Date | gs | min | Total | | 3-Pointers | | Free throws | | Rebounds | | | | pf | a | t/o | blk | stl | pts | avg |
|-----------|----------|----|-----|--------|------|------------|------|-------------|------|----------|-----|-----|-----|----|---|-----|-----|-----|-----|-----|
| | | | | fg-fga | pct | 3fg-fga | pct | ft-fa | pct | off | def | tot | avg | | | | | | | |
| CAMPBELL | 11/08/19 | 22 | | 3-4 | .750 | 0-1 | .000 | 0-0 | .000 | 0 | 1 | 1 | 1.0 | 3 | 1 | 3 | 0 | 0 | 6 | 6.0 |
| at Auburn | 11/14/19 | 27 | | 0-1 | .000 | 0-1 | .000 | 0-0 | .000 | 0 | 2 | 2 | 1.5 | 2 | 6 | 1 | 1 | 0 | 0 | 3.0 |
| WINTHROP | 11/20/19 | 18 | | 3-5 | .600 | 1-3 | .333 | 1-2 | .500 | 2 | 3 | 5 | 2.7 | 1 | 1 | 2 | 0 | 1 | 8 | 4.7 |
| Totals | | 0 | 67 | 6-10 | .600 | 1-5 | .200 | 1-2 | .500 | 2 | 6 | 8 | 2.7 | 6 | 8 | 6 | 1 | 1 | 14 | 4.7 |

Games played: 3
Minutes/game: 22.3
Points/game: 4.7
FG Pct: 60.0
3FG Pct: 20.0
FT Pct: 50.0

Rebounds/game: 2.7
Assists/game: 2.7
Turnovers/game: 2.0
Assist/turnover ratio: 1.3
Steals/game: 0.3
Blocks/game: 0.3

CAREER STATS

| Season | gp-gs | min/avg | Total | | 3-Point | | F-Throws | | Rebounds | | | | Scoring | | | | | | | |
|---------|-------|----------|--------|------|---------|------|----------|------|----------|-----|-----|-----|---------|----|-----|----|-----|-----|-----|-----|
| | | | fg-fga | pct | fg-fga | pct | ft-fa | pct | off | def | tot | avg | pf | fo | ast | to | blk | stl | pts | avg |
| 2018-19 | 32-4 | 739/23.1 | 52-168 | .310 | 22-90 | .244 | 29-39 | .744 | 19 | 74 | 93 | 2.9 | 71 | 1 | 60 | 43 | 7 | 24 | 155 | 4.8 |
| 2019-20 | 3-0 | 67/22.3 | 6-10 | .600 | 1-5 | .200 | 1-2 | .500 | 2 | 6 | 8 | 2.7 | 6 | 0 | 8 | 6 | 1 | 1 | 14 | 4.7 |
| TOTAL | 35-4 | 806/23.0 | 58-178 | .326 | 23-95 | .242 | 30-41 | .732 | 21 | 80 | 101 | 2.9 | 77 | 1 | 68 | 49 | 8 | 25 | 169 | 4.8 |



#4 AZIAH HUDSON

GUARD | SOPHOMORE | 5-6
BALDWIN, NEW YORK
BALDWIN

BIOGRAPHY

2018-19 (FR):

Averaged 8.4 points and 1.1 rebounds as a true freshman ... Played in all 32 games, making 12 starts ... Recorded 15 game double-figure scoring games, including a season-high 23 against Middle Tennessee ... Averaged 10.6 points per game as a starter ... The majority of her 12 starts came when Victoria Morris was injured ... Ranked second on the team in three-pointers made with 55 ... Named to the Buccaneer Classic All-Tournament after averaging 15.5 points in the two games ... Scored 12 points in her collegiate debut against Campbell.

PREP:

Baldwin High School's all-time leading scorer ... Helped lead Baldwin to two state championships ... Named her league's Player of the Year in three consecutive seasons ... A McDonald's All-American nominee ... Rated a 3-star

recruit by ESPN.

PERSONAL:

Daughter of Shemika Egalite ... Chose ODU because it felt like home and for its campus ... Her sister, Ayanna, played basketball for Hunter College in New York City ... Likes seafood as well as Chinese and Italian food ... Favorite athletes are Steph Curry and Skylar Diggins ... Favorite musical artists are Nicki Minaj, Drake and A-Boogie.

2019-20 SEASON HIGHS

POINTS: 5, 2x vs Winthrop 11/20/19, vs. Campbell 11/8/19
REBOUNDS: 1, 2x vs. Winthrop 11/20/19, Campbell 11/8/19
FGM: 2, vs. Winthrop 11/20/19
3FGM: 1, 2x vs. Winthrop 11/20/19, Campbell 11/8/19
FTM: 2, vs. Campbell 11/8/19
ASSISTS: 1, 2x vs. Winthrop 11/20/19, vs. Campbell 11/8/19
BLOCKS: 1, vs. Winthrop 11/20/19
STEALS: 1, 2x vs. Winthrop 11/20/19, Campbell 11/8/19
MINUTES: 29, vs. Campbell 11/8/19

CAREER HIGHS

POINTS: 23, vs. Middle Tennessee, 2/9/19
REBOUNDS: 4, William & Mary, 12/8/18
FGM: 6, vs. Tennessee Tech, 11/25/18
3FGM: 5, 2x, vs. Middle Tennessee 2/9/19, Marshall 3/2/19
FTM: 7, vs. Campbell, 11/6/18
ASSISTS: 3, 2x, Longwood 3/4/19, WKU 3/14/19
BLOCKS: 2, vs. Longwood, 3/4/19
STEALS: 3, vs. Campbell, 11/6/18
MINUTES: 36, 2x, vs. Charlotte 2/16/19, UAB 2/7/19

OLD DOMINION Individual Game-by-Game (as of Nov 22, 2019) All games

#04 Hudson, Aziah

| Opponent | Date | gs | min | Total | | 3-Pointers | | Free throws | | Rebounds | | | | pf | a | t/o | blk | stl | pts | avg |
|-----------|----------|----|-----|--------|------|------------|------|-------------|-------|----------|-----|-----|-----|----|---|-----|-----|-----|-----|-----|
| | | | | fg-fga | pct | 3fg-fga | pct | ft-fa | pct | off | def | tot | avg | | | | | | | |
| CAMPBELL | 11/08/19 | 29 | | 1-7 | .143 | 1-4 | .250 | 2-2 | 1.000 | 0 | 1 | 1 | 1.0 | 1 | 1 | 0 | 0 | 1 | 5 | 5.0 |
| at Auburn | 11/14/19 | 11 | | 1-4 | .250 | 1-4 | .250 | 0-0 | .000 | 0 | 0 | 0 | 0.5 | 0 | 0 | 0 | 0 | 3 | 4.0 | |
| WINTHROP | 11/20/19 | 19 | | 2-8 | .250 | 1-4 | .250 | 0-0 | .000 | 1 | 0 | 1 | 0.7 | 0 | 1 | 0 | 1 | 1 | 5 | 4.3 |
| Totals | | 0 | 59 | 4-19 | .211 | 3-12 | .250 | 2-2 | 1.000 | 1 | 1 | 2 | 0.7 | 1 | 2 | 0 | 1 | 2 | 13 | 4.3 |

Games played: 3
Minutes/game: 19.7
Points/game: 4.3
FG Pct: 21.1
3FG Pct: 25.0
FT Pct: 100.0

Rebounds/game: 0.7
Assists/game: 0.7
Assist/turnover ratio: 99.9
Steals/game: 0.7
Blocks/game: 0.3

CAREER STATS

| Season | gp-gs | min/avg | Total | | 3-Point | | F-Throws | | Rebounds | | | | Scoring | | | | | | | |
|---------|-------|----------|--------|------|---------|------|----------|-------|----------|-----|-----|-----|---------|----|-----|----|-----|-----|-----|-----|
| | | | fg-fga | pct | fg-fga | pct | ft-fa | pct | off | def | tot | avg | pf | fo | ast | to | blk | stl | pts | avg |
| 2018-19 | 32-12 | 818/25.6 | 87-249 | .349 | 55-181 | .304 | 41-59 | .695 | 6 | 29 | 35 | 1.1 | 46 | 0 | 21 | 36 | 5 | 24 | 270 | 8.4 |
| 2019-20 | 3-0 | 59/19.7 | 4-19 | .211 | 3-12 | .250 | 2-2 | 1.000 | 1 | 1 | 2 | 0.7 | 1 | 0 | 2 | 0 | 1 | 2 | 13 | 4.3 |
| TOTAL | 35-12 | 877/25.1 | 91-268 | .340 | 58-193 | .301 | 43-61 | .705 | 7 | 30 | 37 | 1.1 | 47 | 0 | 23 | 36 | 6 | 26 | 283 | 8.1 |



#12 AMAYA REGISTER

GUARD | SOPHOMORE | 5-4

CONYERS, GEORGIA

WESLEYAN

BIOGRAPHY

2018-19 (FR):

Redshirt season ... Did not play due to torn ACL suffered prior to season.

PREP:

Averaged 13 points per game during her senior season and was a First Team All-State, All-Metro and All-County selection ... Helped lead her team to three state championships ... Also an accomplished track athlete and was a member of three state championship teams at Wesleyan High School ... Off the court, made two mission trips to Atlanta and Costa Rica.

PERSONAL:

Daughter of Nakia and Doug Register ... Chose ODU for its campus, coaching staff and diversity ... Her cousin, Brandon Register, played football at UAB ... Favorite food is chicken wings ... Enjoys rap music, especially Migos ... Hobbies include reading.

2019-20 SEASON HIGHS

POINTS: 16, vs. Winthrop 11/20/19

REBOUNDS: 2, vs. Auburn 11/14/19

FGM: 6, vs. Winthrop 11/20/19

3FGM: 4, vs. Winthrop

FTM: 5, vs. Auburn 11/14/19

ASSISTS: 1, 2x vs. Winthrop 11/20/19, Auburn 11/14/19

BLOCKS: 0

STEALS: 2, 2x vs. Winthrop 11/20/19, Auburn 11/14/19

MINUTES: 22, vs. Winthrop 11/20/19

CAREER HIGHS

POINTS: 16, vs. Winthrop 11/20/19

REBOUNDS: 2, vs. Auburn 11/14/19

FGM: 6, vs. Winthrop 11/20/19

3FGM: 4, vs. Winthrop

FTM: 5, vs. Auburn 11/14/19

ASSISTS: 1, 2x vs. Winthrop 11/20/19, Auburn 11/14/19

BLOCKS: 0

STEALS: 2, 2x vs. Winthrop 11/20/19, Auburn 11/14/19

MINUTES: 22, vs. Winthrop 11/20/19

OLD DOMINION Individual Game-by-Game (as of Nov 22, 2019) All games

#12 Register, Amaya

| Opponent | Date | gs | min | Total | | 3-Pointers | | Free throws | | Rebounds | | | | pf | a | t/o | blk | stl | pts | avg |
|-----------|----------|----|-----|--------|------|------------|------|-------------|------|----------|-----|-----|-----|----|---|-----|-----|-----|-----|-----|
| | | | | fg-fga | pct | 3fg-fga | pct | ft-fa | pct | off | def | tot | avg | | | | | | | |
| CAMPBELL | 11/08/19 | 9 | | 0-2 | .000 | 0-2 | .000 | 0-0 | .000 | 0 | 0 | 0 | 0.0 | 2 | 0 | 1 | 0 | 0 | 0 | 0.0 |
| at Auburn | 11/14/19 | 14 | | 2-3 | .667 | 0-1 | .000 | 5-6 | .833 | 0 | 2 | 2 | 1.0 | 1 | 1 | 2 | 0 | 2 | 9 | 4.5 |
| WINTHROP | 11/20/19 | 22 | | 6-10 | .600 | 4-8 | .500 | 0-0 | .000 | 1 | 0 | 1 | 1.0 | 3 | 1 | 1 | 0 | 2 | 16 | 8.3 |
| Totals | | 0 | 45 | 8-15 | .533 | 4-11 | .364 | 5-6 | .833 | 1 | 2 | 3 | 1.0 | 6 | 2 | 4 | 0 | 4 | 25 | 8.3 |

Games played: 3
Minutes/game: 15.0
Points/game: 8.3
FG Pct: 53.3
3FG Pct: 36.4
FT Pct: 83.3

Rebounds/game: 1.0
Assists/game: 0.7
Turnovers/game: 1.3
Assist/turnover ratio: 0.5
Steals/game: 1.3

CAREER STATS

| Season | gp-gs | min/avg | Total | | 3-Point | | F-Throws | | Rebounds | | | | Scoring | | | | | | | |
|---------|-------|---------|--------|------|---------|------|----------|------|----------|-----|-----|-----|---------|----|-----|----|-----|-----|-----|-----|
| | | | fg-fga | pct | fg-fga | pct | ft-fa | pct | off | def | tot | avg | pf | fo | ast | to | blk | stl | pts | avg |
| 2019-20 | 3-0 | 45/15.0 | 8-15 | .533 | 4-11 | .364 | 5-6 | .833 | 1 | 2 | 3 | 1.0 | 6 | 0 | 2 | 4 | 0 | 4 | 25 | 8.3 |
| TOTAL | 3-0 | 45/15.0 | 8-15 | .533 | 4-11 | .364 | 5-6 | .833 | 1 | 2 | 3 | 1.0 | 6 | 0 | 2 | 4 | 0 | 4 | 25 | 8.3 |



#3 AJAH WAYNE

GUARD | SOPHOMORE | 5-10

BIRMINGHAM, ALABAMA

RAMSAY

BIOGRAPHY

2018-19 (FR):

Named to the Conference USA All-Freshman and All-Defensive Teams ... Averaged 11.9 points, 7.9 rebounds, 2.1 assists and 1.7 steals ... Played in all but one game, making 30 starts ... Turned in one of the greatest freshman seasons in school history ... Her 345 points are the sixth-most by a freshman in program history and her 245 rebounds are fifth-most ... Became just the fifth freshman to lead ODU in rebounding, joining Inge Nisse, Anne Donovan, Celeste Hill and Tiffany Green ... Notched four double-doubles and three games with 20+ scoring ... Had her best performance of the season against Cincinnati with a season-high 24 points and 16 rebounds ... Named the USBWA National Freshman of the Week on Feb. 11 after averaging 17.5 points, 7.5 rebounds and 3.5 assists against UAB and Middle Tennessee ... Named the C-USA Freshman of the Week three times ... Scored 22 points in her collegiate debut against Campbell, marking the most by a Monarch since Ashley Betz-White in 2011.

PREP:

Scored over 2,000 career points during her high school career, playing for both Ramsay and Homewood High Schools ... Won two state championships ... Named the 6A State Player of the Year in 2017 ... Scored 22 points in the Alabama North-South All-Star Game ... Named the MVP of the state championship game twice and also earned MVP honors in regionals three times.

PERSONAL:

Daughter of Janice Tucker and Prentice Wayne ... Chose ODU for the coaching staff ... Favorite athlete is Kobe Bryant ... Enjoys rap and R&B music, especially Tasha Cobbs and Moneybagg Yo ... Hobbies include braiding hair and doing make-up.

2019-20 SEASON HIGHS

POINTS: 35, vs. Auburn 11/14/19
 REBOUNDS: 13, vs. Winthrop 11/20/19
 FGM: 14, vs. Auburn 11/14/19
 3FGM: 6, vs. Auburn 11/14/19
 FTM: 2, 2x vs. Winthrop 11/20/19, Campbell 11/8/19
 ASSISTS: 2, vs. Winthrop 11/20/19
 BLOCKS: 2, vs. Winthrop 11/20/19
 STEALS: 4, vs. Auburn 11/14/19
 MINUTES: 29, vs. Winthrop 11/20/19

CAREER HIGHS

POINTS: 35, vs. Auburn 11/14/19
 REBOUNDS: 16, vs. Cincinnati, 11/12/18
 FGM: 14, vs. Auburn 11/14/19
 3FGM: 6, vs. Auburn 11/14/19
 FTM: 14, vs. Cincinnati, 11/12/18
 ASSISTS: 7, vs. FAU, 1/10/19
 BLOCKS: 2, 3x, last vs. FAU, 3/7/19
 STEALS: 6, vs. Jacksonville, 11/24/18
 MINUTES: 40, 2x, vs. Cincinnati 11/12/18, Villanova 3/22/19

OLD DOMINION Individual Game-by-Game (as of Nov 22, 2019) All games

#03 Wayne, Aja

| Opponent | Date | gs | min | Total | | 3-Pointers | | Free throws | | Rebounds | | | | pf | a | t/o | blk | stl | pts | avg | |
|-----------|----------|----|-----|--------|-------|------------|------|-------------|-------|----------|-----|-----|------|------|---|-----|-----|-----|-----|------|------|
| | | | | fg-fga | pct | 3fg-fga | pct | ft-fa | pct | off | def | tot | avg | | | | | | | | |
| CAMPBELL | 11/08/19 | * | 26 | 7-15 | .467 | 0-2 | .000 | 2-4 | .500 | 2 | 6 | 8 | 8.0 | 1 | 0 | 1 | 0 | 3 | 16 | 16.0 | |
| at Auburn | 11/14/19 | * | 29 | 14-20 | .700 | 6-8 | .750 | 1-2 | .500 | 3 | 7 | 10 | 9.0 | 3 | 1 | 2 | 0 | 4 | 35 | 25.5 | |
| WINTHROP | 11/20/19 | * | 29 | 0-11 | .000 | 0-5 | .000 | 2-2 | 1.000 | 4 | 9 | 13 | 10.3 | 1 | 2 | 0 | 2 | 0 | 2 | 17.7 | |
| Totals | | | 3 | 84 | 21.46 | .457 | 6-15 | .400 | 5-8 | .625 | 9 | 22 | 31 | 10.3 | 5 | 3 | 3 | 2 | 7 | 53 | 17.7 |

Games played: 3
 Minutes/game: 28.0
 Points/game: 17.7
 FG Pct: 45.7
 3FG Pct: 40.0
 FT Pct: 62.5

Rebounds/game: 10.3
 Assists/game: 1.0
 Turnovers/game: 1.0
 Assist/turnover ratio: 1.0
 Steals/game: 2.3
 Blocks/game: 0.7

CAREER STATS

| Season | gp-gs | min/avg | Total | | 3-Point | | F-Throws | | Rebounds | | | | Scoring | | | | | | | |
|---------|-------|----------|---------|------|---------|------|----------|------|----------|-----|-----|------|---------|----|-----|----|-----|-----|-----|------|
| | | | fg-fga | pct | fg-fga | pct | ft-fa | pct | off | def | tot | avg | pf | fo | ast | to | blk | stl | pts | avg |
| 2018-19 | 31-30 | 899/29.0 | 125-349 | .358 | 18-74 | .243 | 101-154 | .656 | 82 | 163 | 245 | 7.9 | 81 | 2 | 65 | 59 | 10 | 53 | 369 | 11.9 |
| 2019-20 | 3-3 | 84/28.0 | 21-46 | .457 | 6-15 | .400 | 5-8 | .625 | 9 | 22 | 31 | 10.3 | 5 | 0 | 3 | 3 | 2 | 7 | 53 | 17.7 |
| TOTAL | 34-33 | 983/28.9 | 146-395 | .370 | 24-89 | .270 | 106-162 | .654 | 91 | 185 | 276 | 8.1 | 86 | 2 | 68 | 62 | 12 | 60 | 422 | 12.4 |



#23 AMARI YOUNG

FORWARD | SOPHOMORE | 5-11
 NORTH AUGUSTA, SOUTH CAROLINA
 NORTH AUGUSTA

BIOGRAPHY

2018-19 (FR):

Had a standout freshman campaign, averaging 8.3 points, 6.5 rebounds and 1.6 steals ... Played in all 32 games, making three starts at forward ... Upped her scoring average to 9.7 points in league play ... Recorded 13 double-figure scoring games, including a season-high 17 three times against Charlotte, LA Tech and UTEP ... Notched four double-doubles, which tied with Ajah Wayne for the team lead ... Had three consecutive double-doubles in March against Marshall, Longwood and FAU ... Shot 48.4 percent from the field and 37.5 percent from three-point range ... Had seven games with 10+ rebounds ... Had seven games with 3+ steals ... Scored 11 points in her collegiate debut at Campbell ... Named the C-USA Freshman of the Week on March 10 after averaging 11.0 points, 12.0 rebounds, 2.0 assists and 2.5 steals in two games.

PREP:

The 2017-18 Gatorade South Carolina Player of the Year ... Averaged 16.9 points, 10.3 rebounds, 3.4 assists and 6.0 steals per game and helped lead her team to its second consecutive state title ... Concluded her prep career with 2,067 points ... A three-time All-State selection ... Also earned Player of the Year honors in 2017-18 from several additional publications including the Aiken Standard, the Augusta Chronicle, the High School Sports Report and the Augusta Sports Council ... Also volunteered locally with the Girl Scouts of America and with the Jenkins Memorial CME Church's Christian Youth Fellowship.

PERSONAL:

Daughter of Al and Lloydette Young ... Chose ODU for its campus and family atmosphere ... Her grandfather played for the Pittsburgh Steelers ... Enjoys R&B and rap music, especially J. Cole, Beyonce and Alicia Keys ... Favorite food is Japanese food ... Also played soccer and ran track in high school.

2019-20 SEASON HIGHS

POINTS: 16, vs. Campbell 11/8/19
 REBOUNDS: 8, vs. Campbell 11/8/19
 FGM: 3, 2x vs. Winthrop 11/20/19, Campbell 11/8/19
 3FGM: 0
 FTM: 10, vs. Campbell 11/8/19
 ASSISTS: 2, 2x vs. Winthrop, Campbell 11/8/19
 BLOCKS: 2, vs. Auburn 11/14/19
 STEALS: 5, vs. Campbell 11/8/19
 MINUTES: 30, vs. Campbell 11/8/19

CAREER HIGHS

POINTS: 17, 2x, LA Tech 1/17/19, Charlotte 2/16/19
 REBOUNDS: 12, 3x, last vs. FAU, 3/7/19
 FGM: 8, vs. LA Tech, 1/17/19
 3FGM: 1, 6x, last vs. FAU, 1/17/19
 FTM: 10, vs. Campbell 11/8/19
 ASSISTS: 3, vs. UTSA, 1/26/19
 BLOCKS: 3, 2x, Campbell 11/6/18, FAU 1/10/19
 STEALS: 5, vs. Campbell 11/8/19
 MINUTES: 34, vs. FAU, 3/7/19

OLD DOMINION Individual Game-by-Game (as of Nov 22, 2019) All games

#23 Young, Amari

| Opponent | Date | gs | min | Total | | 3-Pointers | | Free throws | | Rebounds | | | | pf | a | t/o | blk | stl | pts | avg | |
|-----------|----------|----|-----|--------|------|------------|------|-------------|-------|----------|-----|-----|-----|-----|---|-----|-----|-----|-----|------|------|
| | | | | fg-fga | pct | 3fg-fga | pct | ft-fa | pct | off | def | tot | avg | | | | | | | | |
| CAMPBELL | 11/08/19 | * | 30 | 3-6 | .500 | 0-0 | .000 | 10-12 | .833 | 3 | 5 | 8 | 8.0 | 1 | 2 | 0 | 0 | 5 | 16 | 16.0 | |
| at Auburn | 11/14/19 | * | 22 | 2-5 | .400 | 0-1 | .000 | 2-4 | .500 | 0 | 5 | 5 | 6.5 | 2 | 0 | 4 | 2 | 0 | 6 | 11.0 | |
| WINTHROP | 11/20/19 | * | 26 | 3-7 | .429 | 0-1 | .000 | 2-4 | .500 | 2 | 3 | 5 | 6.0 | 1 | 2 | 1 | 0 | 1 | 8 | 10.0 | |
| Totals | | | 3 | 78 | 8-18 | .444 | 0-2 | .000 | 14-20 | .700 | 5 | 13 | 18 | 6.0 | 4 | 4 | 5 | 2 | 6 | 30 | 10.0 |

Games played: 3
 Minutes/game: 26.0
 Points/game: 10.0
 FG Pct: 44.4
 3FG Pct: 0.0
 FT Pct: 70.0

Rebounds/game: 6.0
 Assists/game: 1.3
 Turnovers/game: 1.7
 Assist/turnover ratio: 0.8
 Steals/game: 2.0
 Blocks/game: 0.7

CAREER STATS

| Season | gp-gs | min/avg | Total | | 3-Point | | F-Throws | | Rebounds | | | | Scoring | | | | | | | |
|---------|-------|----------|---------|------|---------|------|----------|------|----------|-----|-----|-----|---------|----|-----|----|-----|-----|-----|------|
| | | | fg-fga | pct | fg-fga | pct | ft-fa | pct | off | def | tot | avg | pf | fo | ast | to | blk | stl | pts | avg |
| 2018-19 | 32-3 | 726/22.7 | 104-215 | .484 | 6-16 | .375 | 52-102 | .510 | 82 | 127 | 209 | 6.5 | 82 | 0 | 27 | 45 | 14 | 50 | 266 | 8.3 |
| 2019-20 | 3-3 | 78/26.0 | 8-18 | .444 | 0-2 | .000 | 14-20 | .700 | 5 | 13 | 18 | 6.0 | 4 | 0 | 4 | 5 | 2 | 6 | 30 | 10.0 |
| TOTAL | 35-6 | 804/23.0 | 112-233 | .481 | 6-18 | .333 | 66-122 | .541 | 87 | 140 | 227 | 6.5 | 86 | 0 | 31 | 50 | 16 | 56 | 296 | 8.5 |



#2 JORDAN BAILEY

FORWARD | FRESHMAN | 6-1
COLBERT, GEORGIA
MADISON COUNTY

BIOGRAPHY

PREP:

Bailey is a versatile forward from Colbert, Georgia, a small town near Athens. Averaged 22 points and 10 rebound her senior year. In the 2017-18 season, Bailey was named the BAAAA Co-Player of the Year and the Georgia AAAA Player of the Year after leading Madison County to a 22-7 overall record and the school's second consecutive Elite 8 appearance... Off the court, would volunteer feed the homeless with her church and was a member of the Fellowship of Christian Athletes.

PERSONAL:

Daughter of Chris and Kelly Bailey... Has one sister, Avery, and one brother, Jackson... Chose ODU for its winning mentality in the women's basketball program.

2019-20 SEASON HIGHS

POINTS: 0
REBOUNDS: 2, vs. Campbell 11/8/19
FGM: 0
3FGM: 0
FTM: 0
ASSISTS: 0
BLOCKS: 0
STEALS: 0
MINUTES: 5, vs. Campbell 11/8/19

CAREER HIGHS

POINTS: 0
REBOUNDS: 2, vs. Campbell 11/8/19
FGM: 0
3FGM: 0
FTM: 0
ASSISTS: 0
BLOCKS: 0
STEALS: 0
MINUTES: 5, vs. Campbell 11/8/19

OLD DOMINION Individual Game-by-Game (as of Nov 22, 2019) All games

#02 Bailey, Jordan

| Opponent | Date | gs | min | Total | | 3-Pointers | | Free throws | | Rebounds | | | | pf | a | t/o | blk | stl | pts | avg |
|----------|----------|----|-----|--------|------|------------|------|-------------|------|----------|-----|-----|-----|----|---|-----|-----|-----|-----|-----|
| | | | | fg-fga | pct | 3fg-fga | pct | ft-fa | pct | off | def | tot | avg | | | | | | | |
| CAMPBELL | 11/08/19 | | 5 | 0-0 | .000 | 0-0 | .000 | 0-0 | .000 | 1 | 1 | 2 | 2.0 | 0 | 0 | 1 | 0 | 0 | 0 | 0.0 |
| WINTHROP | 11/20/19 | | dnp | - | - | - | - | - | - | - | - | - | - | - | - | - | - | - | - | - |
| Totals | | | 0 | 0-0 | .000 | 0-0 | .000 | 0-0 | .000 | 1 | 1 | 2 | 2.0 | 0 | 0 | 1 | 0 | 0 | 0 | 0.0 |

Games played: 1
Minutes/game: 5.0

Rebounds/game: 2.0
Turnovers/game: 1.0

CAREER STATS

| Season | gp-gs | min/avg | Total | | 3-Point | | F-Throws | | Rebounds | | | | Scoring | | | | | | | |
|---------|-------|---------|--------|------|---------|------|----------|------|----------|-----|-----|-----|---------|----|-----|----|-----|-----|-----|-----|
| | | | fg-fga | pct | fg-fga | pct | ft-fa | pct | off | def | tot | avg | pf | fo | ast | to | blk | stl | pts | avg |
| 2019-20 | 1-0 | 5/5.0 | 0-0 | .000 | 0-0 | .000 | 0-0 | .000 | 1 | 1 | 2 | 2.0 | 0 | 0 | 0 | 1 | 0 | 0 | 0 | 0.0 |
| TOTAL | 1-0 | 5/5.0 | 0-0 | .000 | 0-0 | .000 | 0-0 | .000 | 1 | 1 | 2 | 2.0 | 0 | 0 | 0 | 1 | 0 | 0 | 0 | 0.0 |



#31 MARIE REICHERT

FORWARD | FRESHMAN | 6-2
 KASSEL, GERMANY
 ALBERT-SCHWEITZER-SCHULE KASSEL

BIOGRAPHY

PREP:

Reichert is a skilled forward from Kassel, Germany, a small town located approximately two hours from Frankfurt. Reichert played with the 18U Germany National Team in a tournament in Macedonia, as well as the 19U National Team for the World Championship Games in Thailand. Aside from her national team experience, Reichert played for the Bender Baskets of Grunberg, where she averaged 12 points and seven rebounds, while shooting 50 percent from the floor.

PERSONAL:

Daughter of Bernd Kasman and Dagmar Reichert... Has one brother, Edwin. Chose ODU because of the teammates and coaches and it fit her interests the best.

2019-20 SEASON HIGHS

POINTS: 11, vs. Winthrop 11/20/19
 REBOUNDS: 6, vs. Winthrop 11/20/19
 FGM: 4, vs. Winthrop 11/20/19
 3FGM: 0
 FTM: 3, vs. Winthrop 11/20/19
 ASSISTS: 1, 2x, vs. Campbell 11/8/19, vs. Auburn 11/14/19
 BLOCKS: 5, vs. Campbell 11/8/19
 STEALS: 0
 MINUTES: 22, vs. Campbell 11/8/19

CAREER HIGHS

POINTS: 11, vs. Winthrop 11/20/19
 REBOUNDS: 6, vs. Winthrop 11/20/19
 FGM: 4, vs. Winthrop 11/20/19
 3FGM: 0
 FTM: 3, vs. Winthrop 11/20/19
 ASSISTS: 1, 2x, vs. Campbell 11/8/19, vs. Auburn 11/14/19
 BLOCKS: 5, vs. Campbell 11/8/19
 STEALS: 0
 MINUTES: 22, vs. Campbell 11/8/19

OLD DOMINION Individual Game-by-Game (as of Nov 22, 2019) All games

#31 Reichert, Marie

| Opponent | Date | gs | min | Total | | 3-Pointers | | Free throws | | Rebounds | | | | pf | a | t/o | blk | stl | pts | avg |
|-----------|----------|----|-----|--------|------|------------|------|-------------|------|----------|-----|-----|-----|----|---|-----|-----|-----|-----|-----|
| | | | | fg-fga | pct | 3fg-fga | pct | ft-fa | pct | off | def | tot | avg | | | | | | | |
| CAMPBELL | 11/08/19 | 22 | 2-5 | 400 | 0-0 | .000 | 0-0 | .000 | 5 | 0 | 5 | 5.0 | 2 | 1 | 1 | 5 | 0 | 4 | 4.0 | |
| at Auburn | 11/14/19 | 21 | 2-3 | .667 | 0-1 | .000 | 0-0 | .000 | 1 | 0 | 1 | 3.0 | 3 | 1 | 0 | 0 | 0 | 4 | 4.0 | |
| WINTHROP | 11/20/19 | 18 | 4-5 | .800 | 0-0 | .000 | 3-7 | .429 | 5 | 1 | 6 | 4.0 | 3 | 0 | 1 | 0 | 0 | 11 | 6.3 | |
| Totals | | 0 | 61 | 8-13 | .615 | 0-1 | .000 | 3-7 | .429 | 11 | 1 | 12 | 4.0 | 8 | 2 | 2 | 5 | 0 | 19 | 6.3 |

Games played: 3
 Minutes/game: 20.3
 Points/game: 6.3
 FG Pct: 61.5
 3FG Pct: 0.0
 FT Pct: 42.9

Rebounds/game: 4.0
 Assists/game: 0.7
 Turnovers/game: 0.7
 Assist/turnover ratio: 1.0
 Blocks/game: 1.7

CAREER STATS

| Season | gp-gs | min/avg | Total | | 3-Point | | F-Throws | | Rebounds | | | | Scoring | | | | | | | |
|---------|-------|---------|--------|------|---------|------|----------|------|----------|-----|-----|-----|---------|----|-----|----|-----|-----|-----|-----|
| | | | fg-fga | pct | fg-fga | pct | ft-fa | pct | off | def | tot | avg | pf | fo | ast | to | blk | stl | pts | avg |
| 2019-20 | 3-0 | 61/20.3 | 8-13 | .615 | 0-1 | .000 | 3-7 | .429 | 11 | 1 | 12 | 4.0 | 8 | 0 | 2 | 2 | 5 | 0 | 19 | 6.3 |
| TOTAL | 3-0 | 61/20.3 | 8-13 | .615 | 0-1 | .000 | 3-7 | .429 | 11 | 1 | 12 | 4.0 | 8 | 0 | 2 | 2 | 5 | 0 | 19 | 6.3 |



#24 MACKENZIE SMITH

GUARD | FRESHMAN | 5-6
CAMILLUS, NEW YORK
WEST GENESEE

OUT 2019-20 SEASON WITH TORN ACL

BIOGRAPHY

PREP:

Smith is a point guard from Camillus, New York, located in the suburbs of Syracuse. Last season, Smith was an All-State selection after averaging 14 points, six assists, four rebounds and four steals per game. She also helped guide West Genesee to the Class AA State Championship game.

PERSONAL:

Daughter of Robert and Cindy Smith... Has five siblings, Sierra, Shannon, Trevor, Max and Madison. Mackenzie, Max and Madison (plays basketball at Vermont) are triplets. Chose ODU for both its basketball and academic suc-

cess.

2019-20 SEASON HIGHS

POINTS: -
REBOUNDS: -
FGM: -
3FGM: -
FTM: -
ASSISTS: -
BLOCKS: -
STEALS: -
MINUTES: -

CAREER HIGHS

POINTS: -
REBOUNDS: -
FGM: -
3FGM: -
FTM: -
ASSISTS: -
BLOCKS: -
STEALS: -
MINUTES: -

COACHING STAFF



KEITH FREEMAN, ASSOCIATE HEAD COACH

- SECOND SEASON
- HUNTINGTON COLLEGE '86
- JOINED MCCRAY IN HER SECOND SEASON
- 30 YEARS OF COACHING EXPERIENCE
- LAST STOP WAS AT WRIGHT STATE AS ASSOCIATE HEAD COACH
- HEAD COACHING EXPERIENCE AT VALPARAISO FOR 24 SEASONS



SCEPTER BROWNLEE, ASSISTANT COACH

- SECOND SEASON
- SAN FRANCISCO '04
- JOINED MCCRAY IN HER SECOND SEASON
- PLAYED POINT GUARD AT SAN FRANCISCO
- COACHED FOR SEVEN YEARS AT THE MEN'S COLLEGIATE LEVEL



BRITTANY YOUNG, ASSISTANT COACH

- THIRD SEASON
- SERVES AS RECRUITING COORDINATOR
- FRANCIS MARION '08
- JOINED MCCRAY IN HER FIRST SEASON
- ALL-CONFERENCE PLAYER AT FRANCIS MARION
- WAS A GRADUATE ASSISTANT AT SOUTH CAROLINA WITH MCCRAY ON THE COACHING STAFF
- PRIOR STOPS AT STETSON, DAYTONA STATE COLLEGE



ASHLEY MORRIS DIRECTOR OF BASKETBALL OPERATIONS

- THIRD SEASON
- TEMPLE '08
- JOINED MCCRAY IN HER FIRST SEASON
- PLAYED AT TEMPLE, WHERE SHE ENDED HER CAREER WITH THE THIRD-MOST ASSISTS IN PROGRAM HISTORY
- PLAYED PROFESSIONALLY IN ITALY AND FRANCE
- WAS THE HEAD COACH AT CENTRAL HIGH SCHOOL IN PHILADELPHIA FOR FIVE SEASONS

2019-20 OVERALL SEASON STATS

OLD DOMINION Combined Team Statistics (as of Nov 20, 2019)
All games

| RECORD: | OVERALL | HOME | AWAY | NEUTRAL |
|----------------|---------|------|------|---------|
| ALL GAMES | 3-0 | 2-0 | 1-0 | 0-0 |
| CONFERENCE | 0-0 | 0-0 | 0-0 | 0-0 |
| NON-CONFERENCE | 3-0 | 2-0 | 1-0 | 0-0 |

| # | Player | gp-gs | min | avg | Total | | 3-Point | | F-Throw | | Rebounds | | | pf | dq | a | to | blk | stl | pts | avg | |
|----------------|------------------|-------|-----|------|--------|-------|---------|------|---------|-------|----------|-----|-----|------|----|---|----|-----|-----|-----|-----|------|
| | | | | | fg-fga | fg% | 3fg-fga | 3fg% | ft-fga | ft% | off | def | tot | | | | | | | | | avg |
| 03 | Wayne, Ajah | 3-3 | 84 | 28.0 | 21-46 | .457 | 6-15 | .400 | 5-8 | .625 | 9 | 22 | 31 | 10.3 | 5 | 0 | 3 | 3 | 2 | 7 | 53 | 17.7 |
| 05 | Morris, Victoria | 3-3 | 77 | 25.7 | 10-30 | .333 | 8-17 | .471 | 3-5 | .600 | 1 | 9 | 10 | 3.3 | 5 | 0 | 4 | 3 | 0 | 0 | 31 | 10.3 |
| 23 | Young, Amari | 3-3 | 78 | 26.0 | 8-18 | .444 | 0-2 | .000 | 14-20 | .700 | 5 | 13 | 18 | 6.0 | 4 | 0 | 4 | 5 | 2 | 6 | 30 | 10.0 |
| 11 | Edwards, Taylor | 3-3 | 69 | 23.0 | 11-24 | .458 | 2-6 | .333 | 5-11 | .455 | 5 | 10 | 15 | 5.0 | 9 | 0 | 10 | 10 | 1 | 4 | 29 | 9.7 |
| 12 | Register, Amaya | 3-0 | 45 | 15.0 | 8-15 | .533 | 4-11 | .364 | 5-6 | .833 | 1 | 2 | 3 | 1.0 | 6 | 0 | 2 | 4 | 0 | 4 | 25 | 8.3 |
| 31 | Reichert, Marie | 3-0 | 61 | 20.3 | 8-13 | .615 | 0-1 | .000 | 3-7 | .429 | 11 | 1 | 12 | 4.0 | 8 | 0 | 2 | 2 | 5 | 0 | 19 | 6.3 |
| 01 | Adams, Mariah | 3-0 | 67 | 22.3 | 6-10 | .600 | 1-5 | .200 | 1-2 | .500 | 2 | 6 | 8 | 2.7 | 6 | 0 | 8 | 6 | 1 | 1 | 14 | 4.7 |
| 04 | Hudson, Aziah | 3-0 | 59 | 19.7 | 4-19 | .211 | 3-12 | .250 | 2-2 | 1.000 | 1 | 1 | 2 | 0.7 | 1 | 0 | 2 | 0 | 1 | 2 | 13 | 4.3 |
| 25 | Scott, Ashley | 3-3 | 38 | 12.7 | 1-1 | 1.000 | 0-0 | .000 | 0-0 | .000 | 5 | 2 | 7 | 2.3 | 4 | 0 | 1 | 1 | 2 | 0 | 2 | 0.7 |
| 02 | Bailey, Jordan | 1-0 | 5 | 5.0 | 0-0 | .000 | 0-0 | .000 | 0-0 | .000 | 1 | 1 | 2 | 2.0 | 0 | 0 | 0 | 1 | 0 | 0 | 0 | 0.0 |
| 14 | Carter, Dejah | 3-0 | 17 | 5.7 | 0-4 | .000 | 0-0 | .000 | 0-0 | .000 | 1 | 4 | 5 | 1.7 | 4 | 0 | 0 | 2 | 0 | 0 | 0 | 0.0 |
| Team | | | | | | | | | | | 1 | 12 | 13 | | | | 2 | | | | | |
| Total..... | | 3 | 600 | | 77-180 | .428 | 24-69 | .348 | 38-61 | .623 | 43 | 83 | 126 | 42.0 | 52 | 0 | 36 | 39 | 14 | 24 | 216 | 72.0 |
| Opponents..... | | 3 | 600 | | 59-169 | .349 | 12-48 | .250 | 35-56 | .625 | 37 | 73 | 110 | 36.7 | 54 | - | 32 | 47 | 8 | 22 | 165 | 55.0 |

| TEAM STATISTICS | ODU | OPP | Date | Opponent | Score | Att. |
|------------------------|--------|--------|---------------------|-----------|---------|------|
| SCORING | 216 | 165 | 11/08/19 | CAMPBELL | w 59-44 | 1915 |
| Points per game | 72.0 | 55.0 | 11/14/19 | at Auburn | w 89-77 | 1635 |
| Scoring margin | +17.0 | - | 11/20/19 | WINTHROP | w 68-44 | 5935 |
| FIELD GOALS-ATT | 77-180 | 59-169 | | | | |
| Field goal pct | .428 | .349 | * - Conference game | | | |
| 3 POINT FG-ATT | 24-69 | 12-48 | | | | |
| 3-point FG pct | .348 | .250 | | | | |
| 3-pt FG made per game | 8.0 | 4.0 | | | | |
| FREE THROWS-ATT | 38-61 | 35-56 | | | | |
| Free throw pct | .623 | .625 | | | | |
| F-Throws made per game | 12.7 | 11.7 | | | | |
| REBOUNDS | 126 | 110 | | | | |
| Rebounds per game | 42.0 | 36.7 | | | | |
| Rebounding margin | +5.3 | - | | | | |
| ASSISTS | 36 | 32 | | | | |
| Assists per game | 12.0 | 10.7 | | | | |
| TURNOVERS | 39 | 47 | | | | |
| Turnovers per game | 13.0 | 15.7 | | | | |
| Turnover margin | +2.7 | - | | | | |
| Assist/turnover ratio | 0.9 | 0.7 | | | | |
| STEALS | 24 | 22 | | | | |
| Steals per game | 8.0 | 7.3 | | | | |
| BLOCKS | 14 | 8 | | | | |
| Blocks per game | 4.7 | 2.7 | | | | |
| ATTENDANCE | 7850 | 1635 | | | | |
| Home games-Avg/Game | 2-3925 | 1-1635 | | | | |
| Neutral site-Avg/Game | - | 0-0 | | | | |

| Score by Periods | 1st | 2nd | 3rd | 4th | Totals |
|------------------|-----|-----|-----|-----|--------|
| OLD DOMINION | 51 | 52 | 50 | 63 | 216 |
| Opponents | 40 | 42 | 39 | 44 | 165 |

2018-19 C-USA ONLY STATS

THE STAT CREW SYSTEM
Old Dominion Combined Team Statistics (as of Mar 07, 2019)
Conference games only

| RECORD: | OVERALL | HOME | AWAY | NEUTRAL |
|----------------|---------|------|------|---------|
| ALL GAMES | 10-6 | 6-2 | 4-4 | 0-0 |
| CONFERENCE | 10-6 | 6-2 | 4-4 | 0-0 |
| NON-CONFERENCE | 0-0 | 0-0 | 0-0 | 0-0 |

| # | Player | gp-gs | min | Total | | 3-Point | | F-Throw | | Rebounds | | | pf | dq | a | to | blk | stl | pts | avg | | |
|----------------|------------------|-------|------|--------|---------|---------|---------|---------|---------|----------|-----|-----|-----|------|-----|----|-----|-----|-----|-----|------|------|
| | | | | fg-fga | fg% | 3fg-fga | 3fg% | ft-fa | ft% | off | def | tot | | | | | | | | | avg | |
| 05 | MORRIS, Victoria | 9-9 | 241 | 26.8 | 46-112 | .411 | 25-66 | .379 | 11-17 | .647 | 4 | 22 | 26 | 2.9 | 21 | 1 | 15 | 15 | 1 | 6 | 128 | 14.2 |
| 03 | WAYNE, Ajah | 16-16 | 444 | 27.8 | 63-158 | .399 | 12-38 | .316 | 43-64 | .672 | 34 | 77 | 111 | 6.9 | 36 | 0 | 34 | 26 | 5 | 28 | 181 | 11.3 |
| 11 | EDWARDS, Taylor | 16-14 | 438 | 27.4 | 59-132 | .447 | 2-16 | .125 | 43-79 | .544 | 22 | 52 | 74 | 4.6 | 35 | 0 | 67 | 46 | 2 | 25 | 163 | 10.2 |
| 23 | YOUNG, Amari | 16-1 | 368 | 23.0 | 65-116 | .560 | 5-11 | .455 | 20-46 | .435 | 40 | 59 | 99 | 6.2 | 38 | 0 | 12 | 26 | 7 | 24 | 155 | 9.7 |
| 04 | HUDSON, Aziah | 16-8 | 431 | 26.9 | 48-132 | .364 | 39-108 | .361 | 19-30 | .633 | 5 | 10 | 15 | 0.9 | 23 | 0 | 8 | 16 | 1 | 9 | 154 | 9.6 |
| 20 | ROBINSON, Maggie | 16-15 | 392 | 24.5 | 35-111 | .315 | 23-88 | .261 | 14-18 | .778 | 20 | 38 | 58 | 3.6 | 38 | 0 | 14 | 18 | 3 | 8 | 107 | 6.7 |
| 14 | CARTER, Dejah | 16-15 | 248 | 15.5 | 33-58 | .569 | 1-1 | 1.000 | 10-16 | .625 | 33 | 37 | 70 | 4.4 | 32 | 0 | 5 | 17 | 12 | 4 | 77 | 4.8 |
| 01 | ADAMS, Mariah | 16-2 | 385 | 24.1 | 20-77 | .260 | 7-43 | .163 | 17-21 | .810 | 11 | 35 | 46 | 2.9 | 34 | 0 | 30 | 21 | 1 | 12 | 64 | 4.0 |
| 35 | SADLER, Hannah | 11-0 | 65 | 5.9 | 9-24 | .375 | 1-2 | .500 | 0-0 | .000 | 5 | 8 | 13 | 1.2 | 4 | 0 | 3 | 5 | 3 | 1 | 19 | 1.7 |
| 00 | JERNIGAN, Ann | 9-0 | 43 | 4.8 | 3-8 | .375 | 1-4 | .250 | 2-3 | .667 | 0 | 7 | 7 | 0.8 | 7 | 0 | 4 | 4 | 1 | 2 | 9 | 1.0 |
| 25 | SCOTT, Ashley | 16-0 | 145 | 9.1 | 5-9 | .556 | 0-0 | .000 | 0-2 | .000 | 23 | 24 | 47 | 2.9 | 26 | 0 | 4 | 6 | 4 | 2 | 10 | 0.6 |
| Team | | | | | | | | | | | 27 | 36 | 63 | | | | | 16 | | | | |
| Total..... | | 16 | 3200 | | 386-937 | .412 | 116-377 | .308 | 179-296 | .605 | 224 | 405 | 629 | 39.3 | 294 | 1 | 196 | 216 | 40 | 121 | 1067 | 66.7 |
| Opponents..... | | 16 | 3200 | | 332-855 | .388 | 99-303 | .327 | 204-291 | .701 | 169 | 392 | 561 | 35.1 | 282 | - | 184 | 246 | 37 | 87 | 967 | 60.4 |

| TEAM STATISTICS | ODU | OPP | Date | Opponent | Score | Att. |
|------------------------|---------|---------|---------------------|---------------------|---------|------|
| SCORING | 1067 | 967 | * 01/03/19 | at Marshall | L 48-57 | 698 |
| Points per game | 66.7 | 60.4 | * 01/05/19 | at WKU | L 60-75 | 1236 |
| Scoring margin | +6.3 | - | * 01/10/19 | FLORIDA ATLANTIC | w 87-53 | 1396 |
| FIELD GOALS-ATT | 386-937 | 332-855 | * 01/12/19 | FIU | w 95-68 | 1537 |
| Field goal pct | .412 | .388 | * 01/17/19 | at Louisiana Tech | w 70-59 | 1608 |
| 3 POINT FG-ATT | 116-377 | 99-303 | * 01/19/19 | at Southern Miss | w 53-50 | 1099 |
| 3-point FG pct | .308 | .327 | * 01/24/19 | UTEP | w 78-59 | 6314 |
| 3-pt FG made per game | 7.3 | 6.2 | * 01/26/19 | UTSA | w 72-47 | 1928 |
| FREE THROWS-ATT | 179-296 | 204-291 | * 01/31/19 | at North Texas | w 72-71 | 651 |
| Free throw pct | .605 | .701 | * 02/02/19 | at Rice | L 42-48 | 737 |
| F-Throws made per game | 11.2 | 12.8 | * 02/07/19 | UAB | L 61-69 | 1560 |
| REBOUNDS | 629 | 561 | * 02/09/19 | MIDDLE TENNESSEE | w 70-65 | 2400 |
| Rebounds per game | 39.3 | 35.1 | * 02/16/19 | at Charlotte | L 59-69 | 1177 |
| Rebounding margin | +4.3 | - | * 02/23/19 | CHARLOTTE | L 53-60 | 2230 |
| ASSISTS | 196 | 184 | * 03/02/19 | MARSHALL | w 79-53 | 2408 |
| Assists per game | 12.3 | 11.5 | * 3/7/19 | at Florida Atlantic | w 68-64 | 388 |
| TURNOVERS | 216 | 246 | * = Conference game | | | |
| Turnovers per game | 13.5 | 15.4 | | | | |
| Turnover margin | +1.9 | - | | | | |
| Assist/turnover ratio | 0.9 | 0.7 | | | | |
| STEALS | 121 | 87 | | | | |
| Steals per game | 7.6 | 5.4 | | | | |
| BLOCKS | 40 | 37 | | | | |
| Blocks per game | 2.5 | 2.3 | | | | |
| ATTENDANCE | 19773 | 7594 | | | | |
| Home games-Avg/Game | 8-2472 | 8-949 | | | | |
| Neutral site-Avg/Game | - | 0-0 | | | | |

| Score by Periods | 1st | 2nd | 3rd | 4th | Totals |
|------------------|-----|-----|-----|-----|--------|
| Old Dominion | 257 | 254 | 266 | 290 | 1067 |
| Opponents | 194 | 262 | 245 | 266 | 967 |

Old Dominion Women's Basketball 2019-20 Game Notes

BOX SCORES

GAME ONE: CAMPBELL (Nov. 8, 2019)

CAMPBELL 44 • 1-1

| # | Player | Total | | | 3-Ptr | | | Rebounds | | | PF | TP | A | TO | Blk | Stl | Min |
|--------|---------------------|-------|------|------|-------|-----|-----|----------|----|---|----|----|-----|----|-----|-----|-----|
| | | FG | FGA | FT | FTA | Off | Def | Tot | | | | | | | | | |
| 40 | McNAMARA-CLEMENT, f | 0-3 | 0-0 | 0-0 | 1 | 1 | 2 | 3 | 0 | 0 | 2 | 2 | 0 | 15 | | | |
| 00 | SPEIGHT, Kianna | 1-5 | 1-4 | 0-2 | 1 | 3 | 4 | 0 | 3 | 0 | 0 | 1 | 30 | | | | |
| 10 | BARBER, Hayley | 6-13 | 0-3 | 1-2 | 0 | 3 | 3 | 4 | 13 | 2 | 5 | 0 | 28 | | | | |
| 11 | TUELLE, Shyanne | 4-13 | 0-4 | 0-1 | 1 | 10 | 11 | 3 | 8 | 3 | 1 | 0 | 38 | | | | |
| 25 | SERRANHO, Luana | 2-6 | 1-3 | 3-4 | 0 | 1 | 1 | 2 | 8 | 1 | 4 | 0 | 24 | | | | |
| 01 | PRICE, Faith | 0-1 | 0-1 | 0-0 | 0 | 1 | 1 | 2 | 0 | 0 | 0 | 0 | 6 | | | | |
| 03 | COLEMAN, Micaila | 0-1 | 0-0 | 0-0 | 0 | 1 | 1 | 1 | 0 | 1 | 0 | 0 | 14 | | | | |
| 04 | HAMPTON, Ashlyn | 1-3 | 0-0 | 0-0 | 2 | 1 | 3 | 1 | 2 | 0 | 2 | 0 | 6 | | | | |
| 05 | CARVER, Tatyana | 0-1 | 0-1 | 0-0 | 0 | 0 | 0 | 0 | 0 | 0 | 0 | 0 | 2 | | | | |
| 14 | STAVES, Brittany | 2-4 | 0-1 | 1-1 | 0 | 1 | 1 | 1 | 5 | 0 | 2 | 0 | 10 | | | | |
| 23 | BOLDEN, Taya | 1-7 | 0-0 | 3-4 | 5 | 10 | 2 | 5 | 2 | 4 | 2 | 0 | 22 | | | | |
| 44 | NURENBERG, Svenia | 0-0 | 0-0 | 0-0 | 0 | 1 | 1 | 0 | 0 | 0 | 0 | 0 | 5 | | | | |
| Team | | | | | | 2 | 4 | 6 | | | | | 200 | | | | |
| Totals | | 17-57 | 2-17 | 8-14 | 12 | 32 | 44 | 19 | 44 | 9 | 20 | 4 | 200 | | | | |

| | | | | | | | | | | | | |
|-------------|------|-------|------------|-------|------------|-------|------------|-------|-------|-------|----------|----------|
| 1st - FG %: | 5-17 | 29.4% | 2nd - 5-13 | 38.5% | 3rd - 4-13 | 30.8% | 4th - 3-14 | 21.4% | Game: | 17-57 | 29.8% | Deadball |
| 3FG %: | 0-2 | 0.0% | 1-3 | 33.3% | 1-4 | 25.0% | 0-6 | 0.0% | 2-17 | 11.8% | Rebounds | 2 |
| FT %: | 0-1 | 0.0% | 1-3 | 33.3% | 3-5 | 60.0% | 4-5 | 80.0% | 8-14 | 57.1% | Rebounds | 2 |

OLD DOMINION 59 • 1-0

| # | Player | Total | | | 3-Ptr | | | Rebounds | | | PF | TP | A | TO | Blk | Stl | Min |
|--------|------------------|-------|------|-------|-------|-----|-----|----------|----|---|----|----|-----|-----|-----|-----|-----|
| | | FG | FGA | FT | FTA | Off | Def | Tot | | | | | | | | | |
| 23 | Young, Amari | 3-6 | 0-0 | 10-12 | 3 | 5 | 8 | 1 | 16 | 2 | 0 | 0 | 5 | 30 | | | |
| 25 | Scott, Ashley | 0-0 | 0-0 | 0-0 | 0 | 2 | 2 | 0 | 0 | 0 | 0 | 1 | 5 | | | | |
| 03 | Wayne, Ajah | 7-15 | 0-2 | 2-4 | 2 | 6 | 8 | 1 | 16 | 0 | 1 | 0 | 26 | | | | |
| 05 | Morris, Victoria | 0-11 | 0-3 | 0-0 | 0 | 5 | 5 | 1 | 0 | 0 | 1 | 0 | 23 | | | | |
| 11 | Edwards, Taylor | 4-8 | 0-1 | 4-8 | 2 | 5 | 7 | 4 | 12 | 1 | 2 | 0 | 24 | | | | |
| 01 | Adams, Mariah | 3-4 | 0-1 | 0-0 | 0 | 1 | 1 | 3 | 6 | 1 | 3 | 0 | 22 | | | | |
| 02 | Bailey, Jordan | 0-0 | 0-0 | 0-0 | 1 | 1 | 2 | 0 | 0 | 0 | 1 | 0 | 5 | | | | |
| 04 | Hudson, Aziah | 1-7 | 1-4 | 2-2 | 0 | 1 | 1 | 1 | 5 | 1 | 0 | 0 | 29 | | | | |
| 12 | Register, Amaya | 0-2 | 0-2 | 0-0 | 0 | 0 | 0 | 2 | 0 | 0 | 1 | 0 | 9 | | | | |
| 14 | Carter, Dejah | 0-3 | 0-0 | 0-0 | 1 | 2 | 3 | 0 | 0 | 2 | 0 | 0 | 5 | | | | |
| 31 | Reichert, Marie | 2-5 | 0-0 | 0-0 | 5 | 0 | 5 | 2 | 4 | 1 | 1 | 5 | 22 | | | | |
| Team | | | | | | 1 | 4 | 5 | | | | | 200 | | | | |
| Totals | | 20-61 | 1-13 | 18-26 | 15 | 32 | 47 | 18 | 59 | 6 | 12 | 6 | 11 | 200 | | | |

| | | | | | | | | | | | | |
|-------------|------|-------|------------|--------|------------|-------|------------|-------|-------|-------|----------|----------|
| 1st - FG %: | 4-17 | 23.5% | 2nd - 6-14 | 42.9% | 3rd - 5-13 | 38.5% | 4th - 5-15 | 33.3% | Game: | 20-61 | 32.8% | Deadball |
| 3FG %: | 0-2 | 0.0% | 1-5 | 20.0% | 0-3 | 0.0% | 0-6 | 0.0% | 1-13 | 7.7% | Rebounds | 2 |
| FT %: | 4-6 | 66.7% | 2-2 | 100.0% | 6-10 | 60.0% | 6-8 | 75.0% | 18-26 | 69.2% | Rebounds | 2 |

Officials: Roy Gulbeyan, Kris Denison, Priscilla Herring
 Technical fouls: CAMPBELL-None. OLD DOMINION-None.
 Attendance: 1915

| Score by periods | 1st | 2nd | 3rd | 4th | Total |
|------------------|-----|-----|-----|-----|-------|
| CAMPBELL | 10 | 12 | 12 | 10 | 44 |
| OLD DOMINION | 12 | 15 | 16 | 16 | 59 |

| | | | | | |
|--------|----|-----|-----|------|-------|
| Points | In | Off | 2nd | Fast | Bench |
| CAM | 24 | 7 | 9 | 2 | 12 |
| ODU | 34 | 24 | 13 | 12 | 15 |

Score tied - 3 times.
Lead changed - 3 times.

Last FG - CAM 4th-00:29, ODU 4th-05:03.
 Largest lead - CAM by 5 1st-06:11, ODU by 21 4th-05:03.
 CAM led for 07:06, ODU led for 32:01. Game was tied for 00:53.

GAME TWO: AT AUBURN (Nov. 14, 2019)

OLD DOMINION 89 • 2-0,0-0 C-USA

| # | Player | Total | | | 3-Ptr | | | Rebounds | | | PF | TP | A | TO | Blk | Stl | Min |
|--------|------------------|-------|-------|-------|-------|-----|-----|----------|----|----|----|----|-----|-----|-----|-----|-----|
| | | FG | FGA | FT | FTA | Off | Def | Tot | | | | | | | | | |
| 23 | Young, Amari | 2-5 | 0-1 | 2-4 | 0 | 5 | 5 | 2 | 6 | 0 | 4 | 2 | 0 | 22 | | | |
| 25 | Scott, Ashley | 0-0 | 0-0 | 0-0 | 0 | 0 | 2 | 3 | 0 | 0 | 1 | 0 | 21 | | | | |
| 03 | Wayne, Ajah | 14-20 | 6-8 | 1-2 | 3 | 7 | 10 | 3 | 35 | 1 | 2 | 0 | 4 | 29 | | | |
| 05 | Morris, Victoria | 6-11 | 5-9 | 3-5 | 0 | 2 | 2 | 4 | 20 | 2 | 1 | 0 | 0 | 28 | | | |
| 11 | Edwards, Taylor | 5-7 | 2-3 | 0-1 | 0 | 2 | 2 | 2 | 12 | 5 | 4 | 0 | 1 | 25 | | | |
| 01 | Adams, Mariah | 0-1 | 0-1 | 0-0 | 0 | 2 | 2 | 2 | 0 | 6 | 1 | 1 | 0 | 27 | | | |
| 04 | Hudson, Aziah | 1-4 | 1-4 | 0-0 | 0 | 0 | 0 | 0 | 3 | 0 | 0 | 0 | 11 | | | | |
| 12 | Register, Amaya | 2-3 | 0-1 | 5-6 | 0 | 2 | 2 | 1 | 9 | 1 | 2 | 0 | 14 | | | | |
| 14 | Carter, Dejah | 0-0 | 0-0 | 0-0 | 0 | 0 | 0 | 1 | 0 | 0 | 0 | 0 | 2 | | | | |
| 31 | Reichert, Marie | 2-3 | 0-1 | 0-0 | 1 | 0 | 1 | 3 | 4 | 1 | 0 | 0 | 21 | | | | |
| Team | | | | | | 0 | 2 | 2 | | | | | 200 | | | | |
| Totals | | 32-54 | 14-28 | 11-18 | 6 | 22 | 28 | 21 | 89 | 16 | 15 | 3 | 7 | 200 | | | |

| | | | | | | | | | | | | |
|-------------|------|-------|------------|--------|------------|-------|------------|--------|-------|-------|----------|----------|
| 1st - FG %: | 9-17 | 52.9% | 2nd - 5-11 | 45.5% | 3rd - 9-16 | 56.3% | 4th - 9-10 | 90.0% | Game: | 32-54 | 59.3% | Deadball |
| 3FG %: | 5-12 | 41.7% | 3-5 | 60.0% | 1-6 | 16.7% | 5-5 | 100.0% | 14-28 | 50.0% | Rebounds | 5 |
| FT %: | 1-2 | 50.0% | 4-4 | 100.0% | 0-1 | 0.0% | 6-11 | 54.5% | 11-18 | 61.1% | Rebounds | 5 |

Auburn 77 • 1-1,0-0 SEC

| # | Player | Total | | | 3-Ptr | | | Rebounds | | | PF | TP | A | TO | Blk | Stl | Min |
|--------|----------------------|-------|------|-------|-------|-----|-----|----------|----|---|----|----|-----|-----|-----|-----|-----|
| | | FG | FGA | FT | FTA | Off | Def | Tot | | | | | | | | | |
| 10 | Kiyae White | 2-4 | 0-0 | 1-3 | 1 | 3 | 4 | 3 | 5 | 0 | 0 | 0 | 0 | 20 | | | |
| 20 | Unique Thompson | 5-6 | 0-0 | 3-8 | 7 | 3 | 10 | 2 | 13 | 2 | 2 | 0 | 0 | 30 | | | |
| 06 | Daisa Alexander | 5-16 | 2-5 | 5-6 | 1 | 3 | 4 | 4 | 17 | 2 | 3 | 0 | 4 | 28 | | | |
| 03 | Annie Hughes | 5-7 | 1-1 | 1-2 | 3 | 1 | 4 | 1 | 12 | 1 | 0 | 0 | 2 | 35 | | | |
| 05 | Brooke Moore | 3-9 | 2-6 | 7-7 | 1 | 0 | 1 | 0 | 15 | 2 | 2 | 0 | 2 | 24 | | | |
| 04 | Abigail Jackson | 1-1 | 0-0 | 0-0 | 0 | 1 | 1 | 1 | 2 | 0 | 0 | 1 | 0 | 10 | | | |
| 12 | Maliya Perry | 0-1 | 0-0 | 0-2 | 0 | 1 | 1 | 1 | 0 | 0 | 0 | 0 | 7 | | | | |
| 13 | Lauren Hansen | 3-7 | 1-3 | 0-0 | 0 | 0 | 0 | 5 | 7 | 1 | 4 | 0 | 1 | 21 | | | |
| 24 | Erin Howard | 2-5 | 2-4 | 0-0 | 0 | 3 | 3 | 2 | 6 | 1 | 1 | 1 | 0 | 18 | | | |
| 30 | Morgan Robinson-Nwag | 0-4 | 0-0 | 0-0 | 2 | 2 | 4 | 0 | 0 | 0 | 2 | 0 | 0 | 7 | | | |
| Team | | | | | | 1 | 1 | 2 | | | | | 200 | | | | |
| Totals | | 26-60 | 8-19 | 17-28 | 16 | 18 | 34 | 19 | 77 | 9 | 14 | 2 | 9 | 200 | | | |

| | | | | | | | | | | | | |
|-------------|------|-------|------------|-------|------------|-------|------------|-------|-------|-------|----------|----------|
| 1st - FG %: | 7-10 | 70.0% | 2nd - 5-13 | 38.5% | 3rd - 8-19 | 42.1% | 4th - 6-18 | 33.3% | Game: | 26-60 | 43.3% | Deadball |
| 3FG %: | 1-3 | 33.3% | 2-4 | 50.0% | 3-6 | 50.0% | 2-6 | 33.3% | 8-19 | 42.1% | Rebounds | 7 |
| FT %: | 6-8 | 75.0% | 6-11 | 54.5% | 0-2 | 0.0% | 5-7 | 71.4% | 17-28 | 60.7% | Rebounds | 7 |

Officials: Karleena Tobin, Angel Stanton, Tina Napier
 Technical fouls: OLD DOMINION-None. Auburn-None.
 Attendance: 1635

| Score by periods | 1st | 2nd | 3rd | 4th | Total |
|------------------|-----|-----|-----|-----|-------|
| OLD DOMINION | 24 | 17 | 19 | 29 | 89 |
| Auburn | 21 | 18 | 19 | 19 | 77 |

| | | | | | |
|--------|----|-----|-----|------|-------|
| Points | In | Off | 2nd | Fast | Bench |
| ODU | 30 | 16 | 11 | 13 | 16 |
| AUB | 28 | 14 | 22 | 4 | 15 |

Score tied - 3 times.
Lead changed - 6 times.

Last FG - ODU 4th-03:30, AUB 4th-00:06.
 Largest lead - ODU by 16 4th-03:30, AUB by 2 1st-07:02.
 ODU led for 37:31, AUB led for 00:45. Game was tied for 01:44.

GAME THREE: WINTHROP (Nov. 20, 2019)

WINTHROP 44 • 1-2

| # | Player | Total | | | 3-Ptr | | | Rebounds | | | PF | TP | A | TO | Blk | Stl | Min |
|--------|----------------------|-------|------|-------|-------|-----|-----|----------|---|---|----|----|-----|----|-----|-----|-----|
| | | FG | FGA | FT | FTA | Off | Def | Tot | | | | | | | | | |
| 24 | NWABUDU, Kem | 3-7 | 0-0 | 0-2 | 0 | 5 | 5 | 3 | 6 | 0 | 1 | 1 | 1 | 25 | | | |
| 10 | SANTORO, Miquela | 1-7 | 0-5 | 0-0 | 1 | 0 | 1 | 0 | 2 | 4 | 0 | 0 | 1 | 26 | | | |
| 15 | WHITFIELD, Jah'Che | 1-10 | 0-1 | 1-2 | 1 | 5 | 6 | 1 | 3 | 1 | 1 | 0 | 2 | 27 | | | |
| 20 | CANTRELL, Marissa | 2-6 | 0-0 | 5-6 | 0 | 2 | 2 | 3 | 9 | 4 | 5 | 0 | 2 | 26 | | | |
| 21 | RILEY, Anik | 0-3 | 0-1 | 0-0 | 0 | 4 | 4 | 2 | 0 | 1 | 0 | 0 | 1 | 25 | | | |
| 00 | LANGSTAFF, Maleeah | 1-2 | 0-0 | 2-2 | 0 | 1 | 1 | 3 | 4 | 1 | 1 | 0 | 0 | 19 | | | |
| 01 | ELLIOTT, Imani | 1-1 | 0-0 | 0-0 | 0 | 0 | 0 | 0 | 2 | 0 | 0 | 0 | 0 | | | | |
| 04 | BUCKLEY, Sydney | 2-7 | 1-3 | 2-2 | 0 | 2 | 2 | 1 | 7 | 2 | 2 | 0 | 1 | 22 | | | |
| 12 | STRICKLAND, Myra | 1-2 | 0-1 | 0-0 | 0 | 0 | 0 | 1 | 2 | 0 | 0 | 0 | 0 | 5 | | | |
| 23 | HUNTER, Sydney | 2-5 | 0-0 | 0-0 | 4 | 0 | 4 | 1 | 4 | 0 | 1 | 1 | 1 | 15 | | | |
| 32 | HUNTER, Sierra | 0-0 | 0-0 | 0-0 | 0 | 1 | 1 | 0 | 0 | 1 | 0 | 0 | 0 | 1 | | | |
| 44 | HALL, Tori | 2-2 | 1-1 | 0-0 | 0 | 0 | 0 | 0 | 5 | 0 | 0 | 0 | 0 | 3 | | | |
| 55 | COELLO PEREZ, Angela | 0-0 | 0-0 | 0-0 | 0 | 1 | 1 | 1 | 0 | 0 | 0 | 0 | 0 | 6 | | | |
| Team | | | | | | 3 | 2 | 5 | | | | | 200 | | | | |
| Totals | | 16-52 | 2-12 | 10-14 | 9 | | | | | | | | | | | | |