



OLD DOMINION

2021-22 WOMEN'S BASKETBALL

3 NATIONAL CHAMPIONSHIPS /// 1000+ PROGRAM WINS /// 25 NCAA APPEARANCES

2021-22 SCHEDULE/RESULTS

N9	vs. SOUTH CAROLINA ST.	W, 80-52
N14	vs. AUBURN	2 p.m.
N18	vs. GEORGE WASHINGTON	6:30 p.m.
N21	at VCU	1 p.m.
N26	Saint Joseph's !	12 p.m.
N27	Texas Tech !	2:30 p.m.
N28	Stetson !	12 p.m.
D5	at William & Mary	2 p.m.
D8	vs. BOWIE STATE	6:30 p.m.
D12	vs. NORFOLK STATE	2 p.m.
D18	at Appalachian State	2 p.m.
D22	at Temple	12 p.m.
D30	vs. FIU *	6:30 p.m.
J1	vs. FLORIDA ATLANTIC *	2 p.m.
J8	vs. CHARLOTTE *	2 p.m.
J13	at UTSA *	8 p.m.
J15	at UTEP *	3 p.m.
J20	vs. RICE *	6:30 p.m.
J22	vs. NORTH TEXAS *	1 p.m.
J29	at Charlotte *	4 p.m.
F3	at Marshall *	6 p.m.
F5	at WKU *	3 p.m.
F10	vs. MIDDLE TENNESSEE *	6:30 p.m.
F13	at UAB *	1 p.m.
F17	vs. MARSHALL *	6:30 p.m.
F19	vs. WKU *	2 p.m.
F24	at Florida Atlantic *	6 p.m.
F26	at FIU *	12 p.m.
M2	vs. LA Tech *	6:30 p.m.
M5	at Middle Tennessee *	3 p.m.
M8-12	C-USA Tournament (Frisco, Texas)	

All times Eastern & subject to change

Home games in ALL CAPS

! - Van Chancellor Classic (Katy, Texas)

* - Denotes C-USA Contest

ODU Athletic Communications

Women's Basketball Contact: Matt Wurzbarger

Email: mwurzbur@odu.edu

Phone: 540-392-2711 (C) | 757-683-3395 (O)

ODUSPORTS.COM



@ODUSports
@ODU_WBB
@DelishaMJones



@odusports
@oduwbasketball
@delishamiltonjones



@ODUSports
@ODUWBB

OLD DOMINION (1-0, 0-0 C-USA) vs. Auburn (0-1, 0-0 SEC) GAME 2 // NOV. 14 // 2 PM ET // CHARTWAY ARENA



OLD DOMINION MONARCHS

Head Coach: DeLisha Milton-Jones
Record at ODU: 14-11 (2nd season)
Career Record: 46-43 (4th season)
2020-21 Record: 13-11 (7-9 C-USA)
Last Game: W, 80-52 vs. South Carolina State
Ranking: N/A



VS.



AUBURN TIGERS

Head Coach: Johnnie Harris
Record at Auburn: 0-1 (1st season)
Career Record: 0-1 (1st season)
2020-21 Record: 5-19 (0-15 SEC)
Last Game: L, 68-66 vs. Georgia Southern
Ranking: N/A

SERIES HISTORY

All-Time: ODU trails 4-3
Last Meeting: W, 89-77 (11/14/19) at Auburn
First Meeting: W, 68-67 (12/18/83) at ODU
Streak: W1

BROADCAST INFORMATION

Stream: ESPN+
Radio: ESPN Radio 94.1
<https://player.listenlive.co/34101>
PXP: Matthew Hatfield
Color: Susan Montgomery

THE STARTING FIVE

- The Monarchs are hosting a Power 5 conference member for the first time since Virginia visited Chartway Arena on Nov. 18, 2018. In total, current members of a Power 5 conference have visited Chartway Arena 40 times since its opening in 2002. ODU is 17-23 in those games.

- Sunday is a rematch of ODU's thrilling 89-77 win at Auburn on Nov. 14, 2019. Then-sophomore Ajah Wayne scored a career-high 35 points and made six treys while playing in her home state.

- The game also serves as the annual Anne Donovan Classic. Donovan was a 1988 inductee into the ODU Sports Hall of Fame and the program's all-time leading scorer. She led the then-Lady Monarchs to the 1980 AIAW championship and won gold in the 2008 Olympics as the head coach of Team USA.

- ODU opened the season with an 80-52 win over South Carolina State on Tuesday. The Monarchs forced 35 turnovers in the win and shot 64.7% (11-17) in the first quarter. Iggy Allen and Ajah Wayne shared the team highs with 15 points and seven rebounds, and all five starters reached double-figures in scoring.

- All 14 players that dressed for Tuesday night made an appearance in the game, and 11 scored at least one point. Nine players clocked at least 10 minutes of action, and no one played more than 27 minutes.

PREVIOUS GAME STARTERS

#	Player	PPG	RPG	APG	MPG
#1	Mariah Adams Sr. G 6-0	10.0	1.0	2.0	25.0
#2	Iggy Allen Gr. G 5-11	15.0	7.0	1.0	22.0
#11	Kaye Clark Jr. G 5-7	11.0	5.0	1.0	22.0
#14	Ajah Wayne Sr. G/F 5-10	15.0	7.0	1.0	26.0
#23	Amari Young Sr. F 5-11	11.0	6.0	0.0	21.0

QUICK FACTS

General Information

Location: Norfolk, Va. (23529)
 Nickname: Monarchs
 Founded: 1930 (as the Norfolk Division of The College of William & Mary)
 Enrollement: 24,824
 School Colors: Slate Blue (PMS 540)
 Silver (PMS 877)
 Light Blue (PMS 283)
 Home Court: Chartway Arena (8,472)
 Conference: Conference USA
 President: Dr. Brian O. Hemphill (Saint Augustine's)
 Athletic Director: Dr. Camden Wood Selig (Washington & Lee)
 A.D. Office Phone: 757-683-3369
 Sr. Woman Administrator: Carolyn Crutchfield
 Faculty Representative: Stacie Raymer
 Athletic Department Phone: 757-683-3375
 Official Website: ODUSports.com
 Ticket Office Phone: 757-683-4444
 Ticket Office Website: ynotix.com

Program History

First Year: 1969-70
 All-Time: 1098-470 (.700)
 NCAA Appearances: 25 (Last, 2008)
 NCAA Record: 34-24
 WNIT Appearances: 8 (Last, 2019)
 WNIT Record: 7-8

2021-22 Coaching & Support Staff

Head Coach: DeLisha Milton-Jones
 Record at ODU: 14-11
 Overall Record: 46-43
 Assistant Coach: Shammond Williams
 Assistant Coach & Co-Recruiting Coordinator: Danielle Bell
 Assistant Coach & Co-Recruiting Coordinator: Roland Jones Jr.
 Director of Basketball Operations: Corey Green
 Video Coordinator: Kyle Weakland
 Athletic Trainer: Andilynn Beadles
 Strength Coach: Ryan Hardie
 Academic Advisor: Kristin Eden
 Sport Administrator: Carolyn Crutchfield
 Student Manager: Marcus Gear
 Office Phone Number: 757-683-3401

2020-21 Season In Review

Overall Record: 13-11
 C-USA Record: 7-9
 Postseason: N/A
 C-USA Tournament: Semifinals
 Letterwinners Returning/Lost: 5/5
 Starters Returning/Lost: 4/1
 Newcomers: 10 (5 freshman)

Radio Information

Radio Station: 94.1 WVSP-FM / 1310 WGH-AM
 PBP: Matthew Hatfield
 Analyst: Susan Montgomery (at home)

ROSTER BREAKDOWN

NUMERICAL

No.	NAME	POS.	CL.	HT.	HOMETOWN (HS/PREV. SCHOOL)
0	Joy Campbell	G	So.	5-6	Fontana, Calif. / Etiwanda / UC Riverside
1	Mariah Adams	G	Sr.	6-0	Little Rock, Ark. / eStem
2	Iggy Allen	G	Gr.	5-11	Pompano Beach, Fla. / Dillard / FAU
3	Taleah Washington	G	Jr.	5-7	District Heights, Md. / Forestville / Syracuse
4	Aziah Hudson	G	Sr.	5-6	Baldwin, N.Y. / Baldwin
5	Ashanti Barnes-Williams	F	Fr.	6-1	Norfolk, Va. / Lake Taylor
11	Kaye Clark	G	Jr.	5-7	Milwaukee, Wisc. / Rufus King/ Trinity Valley CC
12	Brianna Jackson	F	Jr.	6-3	Virginia Beach, Va. / Princess Anne
14	Ajah Wayne	G/F	Sr.	5-10	Birmingham, Ala. / Ramsay
20	Maggie Robinson	F	Gr.	6-0	Mobile, Ala. / W.P. Davidson / Shelton State CC
23	Amari Young	F	Sr.	5-11	North Augusta, S.C. / North Augusta
24	Eden Sample	G	Fr.	5-11	Gwinnett, Ga. / Collins Hill
25	Kaylen Nelson	G/F	Fr.	5-11	Tulsa, Okla. / Union
35	Alex Rouse	G	Fr.	5-8	Little Rock, Ark. / Joe T. Robinson
44	Amhyia Moreland	F	Fr.	6-1	Charlotte, N.C. / Zebulon B. Vance

ALPHABETICAL

No.	NAME	POS.	CL.	HT.	HOMETOWN (HS/PREV. SCHOOL)
1	Mariah Adams	G	Sr.	6-0	Little Rock, Ark. / eStem
2	Iggy Allen	G	Gr.	5-11	Pompano Beach, Fla. / Dillard / FAU
5	Ashanti Barnes-Williams	F	Fr.	6-1	Norfolk, Va. / Lake Taylor
0	Joy Campbell	G	So.	5-6	Fontana, Calif. / Etiwanda / UC Riverside
11	Kaye Clark	G	Jr.	5-7	Milwaukee, Wisc. / Rufus King/ Trinity Valley CC
4	Aziah Hudson	G	Sr.	5-6	Baldwin, N.Y. / Baldwin
12	Brianna Jackson	F	Jr.	6-3	Virginia Beach, Va. / Princess Anne
44	Amhyia Moreland	F	Fr.	6-1	Charlotte, N.C. / Zebulon B. Vance
25	Kaylen Nelson	G/F	Fr.	5-11	Tulsa, Okla. / Union
20	Maggie Robinson	F	Gr.	6-0	Mobile, Ala. / W.P. Davidson / Shelton State CC
35	Alex Rouse	G	Fr.	5-8	Little Rock, Ark. / Joe T. Robinson
24	Eden Sample	G	Fr.	5-11	Gwinnett, Ga. / Collins Hill
3	Taleah Washington	G	Jr.	5-7	District Heights, Md. / Forestville / Syracuse
14	Ajah Wayne	G/F	Sr.	5-10	Birmingham, Ala. / Ramsay
23	Amari Young	F	Sr.	5-11	North Augusta, S.C. / North Augusta

COACHES & STAFF

Head Coach	DeLisha Milton-Jones
Assistant Coach	Shammond Williams
Asst. Coach & Co-Recruiting Coord.	Danielle Bell
Asst. Coach & Co-Recruiting Coord.	Roland Jones Jr.
Director of Basketball Operations	Corey Green
Video Coordinator	Kyle Weakland
Sports Performance Coach	Ryan Hardie
Athletic Trainer	Andilynn Beadles

PRONUNCIATION GUIDE

#1 Mariah Adams	muh-RYE-uh
#3 Taleah Washington	tah-LEE-uh
#4 Aziah Hudson	ay-ZHUH
#12 Brianna Jackson	bree-AHN-nuh
#14 Ajah Wayne	ay-ZHUH
#24 Eden Sample	ee-DEN
#35 Alex Rouse	hymes with house
#44 Amhyia Moreland	uh-MY-uh

BY STATE/COUNTRY

Alabama (2) Maggie Robinson Ajah Wayne
Arkansas (2) Mariah Adams Alex Rouse
California (1) Joy Campbell
Florida (1) Iggy Allen
Georgia (1) Eden Sample
Maryland (1) Taleah Washington
New York (1) Aziah Hudson
North Carolina (1) Amhyia Moreland
Oklahoma (1) Kaylen Nelson
South Carolina (1) Amari Young
Virginia (2) Ashanti Barnes-Williams Brianna Jackson
Wisconsin (1) Kaye Clark

BY POSITION

GUARD (8) Mariah Adams Iggy Allen Joy Campbell Kaye Clark Aziah Hudson Alex Rouse Eden Sample Taleah Washington
GUARD/FORWARD (2) Kaylen Nelson Ajah Wayne
FORWARD (5) Ashanti Barnes-Williams Brianna Jackson Amhyia Moreland Maggie Robinson Amari Young

BY CLASS

GRADUATES (2) Iggy Allen Maggie Robinson
SENIORS (4) Mariah Adams Aziah Hudson Ajah Wayne Amari Young
JUNIORS (3) Kaye Clark Brianna Jackson Taleah Washington
SOPHOMORES (1) Joy Campbell
FRESHMAN (5) Ashanti Barnes-Williams Amhyia Moreland Kaylen Nelson Alex Rouse Eden Sample



DELISHA MILTON-JONES

Experience: Second Season at ODU (fourth season overall)

Alma Mater: Florida, '97

All-Time Record: 46-43 (.517)

ODU Record: 14-11 (.560)

C-USA Record: 7-9 (.438)

CAREER TIMELINE

COACHING HISTORY

OLD DOMINION, Head Coach (2020-present)

SYRACUSE, Assistant Coach (2019-20)

- Helped recruit No. 4 class in the nation
- Wins over No. 5 Louisville and No. 8 Florida State

PEPPERDINE, Head Coach (2017-19)

- WNIT Sweet 16 in '19
- Finished 22-10 in 2018-19, one of the best turnarounds in the country
- 22 wins marked the program's most wins since 2002

PEPPERDINE, Assistant Coach (2016-17)

PLAYING HISTORY

WNBA (1999-2016)

- Fourth pick in the '99 Draft
- 2x WNBA Champion
- 3x WNBA All-Star
- Retired in '16 with most games played in league history with 499

USA BASKETBALL (1998, 1995-96, 1998-00)

- 2x Gold Medalist in '00 & '08
- 2x FIBA World Champion in '98 & '02

FLORIDA (1991-95)

- Florida Gator Hall Of Fame Inductee (2007)
- 1997 Wade Trophy Winner
- 1997 All-American
- 1,858 points scored

EDUCATION

University of Florida ('97)

DeLisha Milton-Jones, the two-time Olympic gold medalist with a decorated professional career in the WNBA and overseas and former head coach at Pepperdine University, was announced as the new head coach of the Old Dominion women's basketball program by Director of Athletics Dr. Camden Wood Selig on April 17, 2020.

Milton-Jones guided the Monarchs to a 13-11 overall mark and a Conference USA Tournament Semifinals appearance in 2020-21. She notched her first win on the Monarchs' bench on Dec. 3 with a 70-47 result over William & Mary in ODU's home opener. Just three days later, she picked up another win over an in-state opponent – beating eventual Atlantic 10 champion VCU 81-76 in overtime. The Monarchs closed out the regular season with four wins in their last five games, including a 74-57 triumph on the road at C-USA Champions Middle Tennessee. Milton-Jones' Monarchs carried that momentum with them to Frisco, Texas for the C-USA Tournament. ODU won three games in as many days, including a pair of overtime victories, to reach the semifinals as the No. 6 seed out of the east. ODU took Rice, the west's top seed, to the brink before eventually falling 62-60. In all, the Monarchs were 7-2 in their final nine games.

Under the tutelage of Milton-Jones, three Monarchs earned significant accolades in 2020-21. Victoria Morris and Amari Young both placed on the all-conference second team. Young was also on the C-USA All-Defensive Team and the VaSID All-State Second Team. Wayne played her way on to the C-USA All-Tournament Team. ODU also found success in the classroom in 2020-21 with nine players featured on the Conference USA Commissioner's Honor Roll.

Milton-Jones has excelled at every stop of her basketball career. She started her college coaching career as an assistant at Pepperdine in 2016-17. After one season, she moved into the head coaching role and led the program to unprecedented success. In the 2017-18 season, she guided Pepperdine to 10 wins, the most at the Malibu school since 2012. In her second year, the Waves finished 22-10, winning 12 more games than the previous year in one of the best turnarounds in the country. The Waves' 22 victories in 2018-19 also marked the program's most since 2002. Pepperdine earned a WNIT bid for the program's first postseason tournament appearance, and then advanced to the Sweet 16 with wins over St. Mary's and Cal Baptist.

She left Pepperdine for the assistant coaching role at Syracuse following the 2019 WNIT run. Milton-Jones joined the staff of veteran head coach Quentin Hillsman. With Milton-Jones on the bench, the Orange put together a 16-15 mark, highlighted by wins over No. 5 Louisville and No. 8 Florida State.

Milton-Jones's coaching career followed a long and successful professional and international basketball career. Drafted fourth in the 1999 WNBA draft, she played 17 years in the league, retiring from the WNBA in 2016 after setting the record for most games played in league history with 499, which was later broken by WNBA great Sue Bird. She helped lead the Los Angeles Sparks to back-to-back WNBA Championships in 2001 and 2002. She was selected to the WNBA All-Star team in 2000, 2004 and 2007. In all, Milton-Jones played for Atlanta, New York, Washington and San Antonio, in addition to Los Angeles. Her 5,571 career points still rank ninth in WNBA history. She also made stops in Spain, Italy, Turkey, South Korea, the Czech Republic and Russia to play professionally.

On the international stage, Milton-Jones helped the United States win Olympic gold medals in 2000 and 2008. In the latter, she was coached by former ODU legend, Anne Donovan. She missed the 2004 Olympics with an injury. While playing for the national team, Milton-Jones also helped Team USA win FIBA Championships in 1998 and 2002.

Milton-Jones's first venture into coaching came when she was named interim coach of the Los Angeles Stars midway through the 2005 American Basketball Association. She became just the second woman to coach a men's professional basketball team.

Milton-Jones, who played for four years for Carol Ross at Florida, had one of the most remarkable college careers at Florida, capped off her senior year when she was named the 1997 Wade Trophy Winner, the 1997 Honda Award Winner, the 1997 SEC Player of the Year and a First Team All-American selection amongst other highly-touted accolades. She scored 1,858 points during her career, helping the Gators to four straight NCAA tournament appearances. Ironically, her final collegiate game was a 53-51 loss to Old Dominion in the 1997 NCAA Elite Eight. She was named to the Florida Gator Hall of Fame in 2007.



#0
JOY CAMPBELL
5-6 | So. | Guard
Fontana, Calif. | Etiwanda
UC Riverside



#1
MARIAH ADAMS
6-0 | Sr. | Guard
Little Rock, Ark. | eSTEM



#2
IGGY ALLEN
5-11 | Gr. | Guard
Pompano Beach, Fla. | Dillard
Florida Atlantic



#3
TALEAH WASHINGTON
5-7 | Jr. | Guard
District Heights, Md. | Forestville
Syracuse



#4
AZIAH HUDSON
5-6 | Sr. | Guard
Baldwin, N.Y. | Baldwin



#5
ASHANTI BARNES-WILLIAMS
6-1 | Fr. | Forward
Norfolk, Va. | Lake Taylor



#11
KAYE CLARK
5-7 | Jr. | Guard
Milwaukee, Wisc. | Rufus King
Trinity Valley CC



#12
BRIANNA JACKSON
6-3 | Jr. | Forward
Virginia Beach, Va. | Princess Anne
Miami (Fla.)



#14
AJAH WAYNE
5-10 | Sr. | Guard/Forward
Birmingham, Ala. | Ramsay



#20
MAGGIE ROBINSON
6-0 | Gr. | Forward
Mobile, Ala. | W.P. Davidson
Shelton State CC



#23
AMARI YOUNG
5-11 | Sr. | Forward
North Augusta, S.C. | North Augusta



#24
EDEN SAMPLE
5-11 | Fr. | Guard
Gwinnett, Ga. | Collins Hill



#25
KAYLEN NELSON
5-11 | Fr. | Guard
Tulsa, Okla. | Union



#35
ALEX ROUSE
5-8 | Fr. | Guard
Little Rock, Ark. | Joe T. Robinson



#44
AMHYIA MORELAND
6-1 | Fr. | Forward
Charlotte, N.C. | Zebulon B. Vance



DELISHA MILTON-JONES
HEAD COACH
Second Year at ODU; Fourth Overall



SHAMMOND WILLIAMS
ASSISTANT COACH
First Year at ODU



DANIELLE BELL
**ASST. COACH &
RECRUITING COORD.**
First Year at ODU



ROLAND JONES JR.
**ASST. COACH &
RECRUITING COORD.**
Second Year at ODU



COREY GREEN
DIRECTOR OF OPERATIONS
First Year at ODU



KYLE WEAKLAND
VIDEO COORDINATOR
Sixth Year at ODU



ANDILYNN BEADLES
ATHLETIC TRAINER
Third Year at ODU



RYAN HARDIE
SPORTS PERFORMANCE
Fourth Year at ODU

MONARCH NOTES

SERIES HISTORY

All-Time: ODU trails 4-3

Last Meeting: W, 89-77 (11/14/19) at Auburn

First Meeting: W, 68-67 (12/18/83) at ODU

Streak: W1

The Monarchs and Tigers are meeting for the eighth time on Sunday in a series that dates back to the 1983-84 season.

ODU upset Auburn 89-77 on the road in the last meeting on Nov. 14, 2019. That win was ODU's first over a Power 5 conference member since the 2014-15 season.

The Monarchs made nine of their 10 shots in the fourth quarter of that game, including 5-of-5 from deep, to break open a two-point game.

Playing in her home state, **Ajah Wayne** scored a career-high 35 points and added 10 rebounds for a double-double. She shot 14-of-20 from the field and 6-of-8 from 3-point range.

POWER 5 FOES AT CHARTWAY

Sunday's game with Auburn marks the 41st time that a school currently in a Power 5 conference has played the Monarchs at Chartway Arena. ODU is 17-23 all-time against Power 5 competition inside Chartway Arena. Those wins include:

- 69-62 vs. Virginia, March 19, 2015 (WNIT First Round)
- 69-65 vs. Louisville, Nov. 26, 2010
- 65-63 vs. Georgia Tech, Nov. 14, 2010
- 75-66 vs. Ole Miss, Dec. 6, 2009
- 78-70 vs. #16/11 U.Va., Nov. 21, 2008
- 88-85 (OT) vs. U.Va., March 25, 2008 (NCAA Second Round)
- 79-73 vs. Michigan State, Dec. 2, 2007
- 77-49 vs. Penn State, Nov. 29, 2007
- 72-55 vs. Rutgers, Dec. 30, 2006
- 93-61 vs. Penn State, Nov. 29, 2005
- 69-61 vs. Rutgers, Dec. 5, 2004
- 87-56 vs. Virginia Tech, Nov. 27, 2004
- 67-56 vs. Georgia Tech, Dec. 18, 2003
- 73-68 vs. North Carolina, Dec. 7, 2003
- 75-68 vs. Penn State, Nov. 25, 2003

- 79-55 vs. NC State, Dec. 30, 2002

- 63-49 vs. Virginia Tech, Dec. 21, 2002

LAST TIME OUT

The Monarchs opened their season with an 80-52 win over South Carolina State on Tuesday. ODU forced 35 turnovers, the most by a Monarch opponent since the 2012-13 season. The Monarchs came away with 19 steals, one off the Chartway Arena record.

Iggy Allen and **Ajah Wayne** shared team highs with 15 points and seven rebounds. Allen made both of her 3-pointers and had three steals in her Monarch debut. Wayne had two steals and was 6-for-6 from the foul line.

ODU led 28-10 after the first quarter behind a hot start shooting the basketball. The Monarchs made 11 of their 17 attempts in the period (.647) and were 3-for-3 from deep.

After being outscored in the third quarter, ODU put the game away with a 14-0 run in the fourth quarter.

All five of ODU's starters broke double figures in scoring while playing no more than 27 minutes.

SCOUTING AUBURN

The Tigers opened their season on Thursday with a 68-66 home loss to Georgia Southern in the first game of head coach Johnnie Harris' tenure. Auburn led 63-60 with just under two minutes remaining, but GSU scored the next four to go ahead for good.

Harris was a longtime assistant under Vic Shaefer, first at Mississippi State then at Texas. She was named the 2018 WBCA National Assistant Coach of the Year. Known for her recruiting prowess, Harris coached current Monarch **Iggy Allen** for two seasons.

Auburn shot 33.3% from the field, was 5-of-13 from 3-point range and made just 13 of its 22 free throws (.591). In addition the Tigers turned it over 22 times. Sania Wells paced Auburn with 19 points on 7-of-16 shooting and chipped in six rebounds, five assists and two steals and blocks each.

The Tigers return three starters and nine letterwinners from its 2020-21 team that finished 5-19 and 0-15 in SEC play. Honesty Scott-Grayson is Auburn's leading returner in points (14.5), rebounding (4.1), assists (1.7) and steals (2.1). She had 11 points and seven rebounds on Thursday.

CREDENTIALS

Working press credentials for all Old Dominion basketball games may be secured by contacting the athletic communications office at least two days prior to the desired game. All credentials will be left at the pass gate at Chartway Arena, located at the loading dock entrance on 45th Street across from the parking garage. The credentials must be worn at press row and in the press room. **PARKING PASSES ARE AVAILABLE ON A LIMITED BASIS.** Please contact Matt Wurzburger for credential or parking pass inquiries.

PRESS ROW

Press row is located at courtside. All radio and television broadcasts are originated at courtside. For any assistance during a game, please see Matt Wurzburger, who is located at the end of the scorers' table near the ODU bench.

PRESS ROOM/SERVICES

The Carol R. Hudson Press Room is located under section 107 in Chartway Arena. Outside telephone lines, along with wireless and ethernet connections, are available and may be used on a first-come, first-served basis. The press and media hostess and athletic public relations office assistants are available to assist in the filing of post-game stories. A complete play-by-play as well as halftime (12 column) and post-game (NCAA 16 column) statistics are distributed. Pre-game press packets are available one hour prior to tip-off.

PHOTOGRAPHERS

Only working photographers are allowed at courtside. Credentials must be secured at least two days in advance. All photographers must display their badge at all times. Photographers will have access to the Carol R. Hudson Press Room, which provides ethernet, to work pre-game, during the game and post-game on their photography needs.

RADIO BROADCASTS

Requests to broadcast any ODU game must be approved in advance by the athletic public relations office. Phone lines are available at courtside. For additional lines, please contact Matt Wurzburger or Matt Drexler of Spectra. For reference, ODU women's basketball games are broadcast on ESPN 94.1 FM or Money Talk 1310 AM, if there are scheduling conflicts with ESPN.

INTERVIEWS

Post-game interviews with Coach DeLisha Milton-Jones and select players are conducted in the Carol R. Hudson, Jr. Press Room. These interviews will be conducted only after the 10-minute cooling off period. Interviews with the visiting coach are also conducted in the press room. All interviews with Old Dominion players and coaches during the week must be arranged through the athletic communications office. If media has preference on which players they would like to interview in the press conference, please contact Matt Wurzburger at the final media timeout of the fourth quarter to submit your request.

JUST MONARCHS, PLEASE

Although the women's basketball team used to be referred to as the Lady Monarchs, they now should be referred to as the Monarchs. Additionally, Old Dominion University is our official title but ODU will work just fine when abbreviating the school. Old Dom, Old Domin and other variations are incorrect.

STATS COMPARISON (2020-21)



CATEGORY

Overall Record	13-11	5-19
Points Per Game	71.4	65.2
Opp. Points Per Game	68.7	72.3
Rebounds Per Game	40.5	37.4
Rebounding Margin	+1.0	-1.0
Field Goal Pct.	41.0	37.9
Opp. Field Goal Pct.	41.8	45.2
3 PT Pct.	30.8	27.0
Opp. 3 PT Pct.	29.2	37.0
Free Throw Pct.	61.5	72.5
Assists Per Game	13.4	11.5
Turnovers Per Game	12.7	15.4
Blocked Shots Per Game	2.5	2.2
Steals Per Game	7.4	10.5

NCAA STATISTICAL RANKINGS

FINAL 2020-21

INDIVIDUAL

PLAYER	CATEGORY	STAT	NCAA RANK
Mariah Adams	Ast TO Ratio	1.78	95
	APG	4.0	115
Amari Young	RPG	11.2	18
	FG PCT	45.1	142
	Rebounds	246	29
	SPG	2.05	122
Ajah Wayne	FG PCT	53.0	28
	FTA	113	100
	Off. RPG	3.8	23
	PPG	15.5	171
	Rebounds	175	149
	RPG	9.7	49

NCAA STATISTICAL RANKINGS

FINAL 2020-21

TEAM RANKINGS (TOP 100)

CATEGORY	STAT	NCAA RANK
Assist Turnover Ratio	1.06	61
Fewest Turnovers	305	87
Rebounds Per Game	40.50	48
Scoring Offense	71.4	69
Turnover Margin	2.54	63
Turnovers Per Game	12.7	25

2021-22 C-USA Preseason Poll (first-place votes)

1. Charlotte (6) – 185 pts
2. **Old Dominion (6) – 173 pts**
- T3. Middle Tennessee (2) – 150 pts
- T3. North Texas – 150 pts
- T3. UTEP – 150 pts
6. LA Tech – 106 pts
7. FIU – 104 pts
8. Rice – 94 pts
9. Marshall – 85 pts
10. Florida Atlantic – 69 pts
11. UAB – 64 pts
12. WKU – 62 pts
13. Southern Miss – 56 pts
14. UTSA – 19 pts

2020-21 C-USA Preseason Team

- *Quincy Noble, North Texas, R-Jr., G
- *Octavia Jett-Wilson, Charlotte, Gr., G
- Iggy Allen, Old Dominion, Gr., G**
- Katia Gallegos, UTEP, So., G
- Savannah Wheeler, Marshall, So, G
- Amari Young, Old Dominion, Sr., F**
- Jada McMillian, Charlotte, Sr., G
- Ajah Wayne, Old Dominion, Sr., G/F**

*Preseason Co-Player of the Year

SITUATIONAL RECORDS

STAT	Record (last year)
Home	1-0 (6-6)
Home (C-USA)	0-0 (3-6)
Home (Non-Conference)	1-0 (3-0)
Away	0-0 (4-4)
Away (C-USA)	0-0 (4-3)
Away (Non-Conference)	0-0 (0-1)
Neutral	0-0 (3-1)
Leading after 1Q	1-0 (6-7)
Trailing after 1Q	0-0 (4-4)
Tied after 1Q	0-0 (3-0)
Leading at Half	1-0 (7-4)
Trailing at Half	0-0 (6-6)
Tied at Half	0-0 (0-1)
Leading after 3Q	1-0 (9-4)
Trailing after 3Q	0-0 (4-7)
Tied after 3Q	0-0 (0-0)
Scores < 50	0-0 (0-1)
Scores 50-59	0-0 (2-1)
Scores 60-69	0-0 (0-4)
Scores 70-79	0-0 (7-1)
Scores 80-89	1-0 (3-3)
Scores 90-99	0-0 (1-1)
Scores >100	0-0 (0-0)
Allows < 50	0-0 (3-0)
Allows 50-59	1-0 (4-1)
Allows 60-69	0-0 (1-2)
Allows 70-79	0-0 (4-4)
Allows 80-89	0-0 (1-2)
Allows 90-99	0-0 (0-1)
Allows >100	0-0 (0-1)
FG% >= 40	0-0 (10-5)
FG% < 40	1-0 (3-6)
Opp. FG% >= 40	1-0 (5-8)
Opp. FG% < 40	0-0 (8-3)
FG% > Opp.	0-0 (10-2)
FG% <= Opp.	1-0 (3-9)
3PT Made > Opp.	0-0 (8-4)
3PT Made <= Opp.	1-0 (5-7)
FT% >= 70	0-0 (2-1)
FT% < 70	1-0 (11-10)
FT ATT > Opp.	1-0 (10-2)
FT ATT <= Opp.	0-0 (3-9)
Rebounds > Opp.	1-0 (10-3)
Rebounds <= Opp.	0-0 (3-8)
Assists > Opp.	1-0 (8-4)
Assists <= Opp.	0-0 (5-7)
Turnovers > Opp.	0-0 (4-4)
Turnovers <= Opp.	1-0 (9-6)
Overtime	0-0 (3-3)
OT at Home	0-0 (1-1)
OT on Road	0-0 (0-2)
Top 25	0-0 (0-0)
Top 25 at Home	0-0 (0-0)
Top 25 on Road	0-0 (0-0)

MONARCH NOTES CONTINUED..

STRENGTH IN NUMBERS

Last season, the Monarchs relied on a tight rotation with all five starters averaging at least 30 minutes per game and top reserve **Aziah Hudson** playing just south of 29 minutes per contest. Notably, ODU finished a double-overtime game with Charlotte in February with only four players on the court.

2021-22 figures to be a polar opposite for the Monarchs, who added 10 new players prior to the start of the season.

All 14 players who dressed featured in ODU's season opener against South Carolina State. No starter played more than **Ajah Wayne's** 26:38, and nine Monarchs tallied at least 10 minutes of action.

2020-21 IN REVIEW

The Monarchs posted a 13-11 overall mark in 2020-21, going 7-9 in Conference USA games. ODU turned it on late, going 7-2 in its final nine games of the season. During that stretch, the Monarchs upset eventual C-USA champion Middle Tennessee on the road and won three games in as many nights to reach the semifinals of the conference tournament as the East Division's No. 6 seed.

ODU was strong on the glass last season, ranking fourth in the conference and 48th nationally with 40.5 boards per game. The Monarchs boasted two of the conference's top rebounders in **Amari Young** and **Ajah Wayne**. Young averaged a double-double and was 2nd in C-USA and 18th in DI with 11.2 rebounds per game. Wayne averaged 9.7 boards per contest (fourth in C-USA, 49th in DI) and was the leading offensive rebounder in the conference (3.8). Old Dominion was 10-3 last season when winning the rebounding battle.

The Monarchs also took great care of the ball when in possession, averaging only 12.7 turnovers per game, good for second in C-USA and 25th nationally. Starting point guard **Mariah Adams** boasted a 1.78 assist-to-turnover ratio, the fourth-best mark in C-USA. As a team, ODU's 1.06 assist-to-turnover ratio was third-best in the conference.

POTENT QUOTABLES

"She has that type of talent. She is an WNBA prototype. The way that she can score at all levels, and the intensity she can play with on the defensive end, I think this young lady deserves a shot. We're going to try to showcase her while making sure that whatever she's doing is helping the program." **Head coach**

DeLisha Milton-Jones on Iggy Allen playing at the next level

"If I had to give us a grade I would give us a solid C-plus. I'm giving us a C-plus because I'm expecting more consistency on both ends of the floor." **Head coach DeLisha Milton-Jones on ODU's performance vs. S.C. State**

HIGH EXPECTATIONS

Coaches of Conference USA have predicted a two-horse race between the Monarchs and Charlotte for the regular season title. The Monarchs finished just 12 points behind the 49ers in the preseason poll, and both teams received six first-place votes. ODU and Charlotte battled three times last season with each game going beyond regulation. The Monarchs and 49ers played a pair of double-overtime affairs, including a 90-89 ODU win in the C-USA Quarterfinals.

ALLEN, WAYNE, YOUNG NAMED PRESEASON ALL-C-USA

The Monarchs were well-represented in the Conference USA Preseason Team as **Iggy Allen**, **Ajah Wayne** and **Amari Young** all featured on the eight-person team. Those three selections were the most by any C-USA team, and only Charlotte joined ODU with multiple honorees on the team. Allen, last season's C-USA Newcomer of the Year with FAU, makes the preseason team for the first time. Both Wayne and Young were named preseason all-conference prior to the start of last season as well.

MILTON-JONES ANNOUNCES COACHING STAFF

Head coach **DeLisha Milton-Jones** finalized her coaching staff in early September with the hiring of **Danielle Bell**, **Shammond Williams**, and **Corey Jones Jr.**

- A Hampton Roads native, Bell serves as assistant coach and co-recruiting coordinator. Bell joined the Monarchs following a three-year stint at Gardner-Webb. She also had stops at Norfolk State, Richmond and Georgia. She helped the Spartans to their first winning season in 16 years and reached the 2011 Sweet 16 with the Bulldogs. The Kellam High School product graduated from Richmond in 2010 and was a four-year letterwinner with the Spiders.

- Williams was a standout performer at North Carolina with a decade-long professional playing career. Williams made the Final Four in 1995, 1997 and 1998 and left Chapel Hill as the program's career leader in 3-pointers and

THE LAST TIME...

TEAM SCORING

100+	W, 105-62 vs. Hofstra (2/14/04)
90+	W, 90-89 2OT vs. CLT (3/11/21)
<40	L, 37-55 at GW (11/28/20)
Allowed 100+	L, 102-95 2OT vs. CLT (2/10/21)
Allowed <40 W, 85-34	vs. Mount St. Mary's (12/21/19)
5 plyrs w/ 10+ Pts (5)	W, 80-52 vs. S.C. State (11/9/21)
6 plyrs w/ 10+ Pts (6)	W, 95-68 vs. FIU (1/12/19)

TEAM STATS

60%+	61.4% at Southern Miss (2/10/18)
60%+ 3PT	69.2% at Southern Miss (2/10/18)
10+ 3PT	12 vs. WKU (3/9/21)
100% FT	5-5 at George Mason (11/17/17)
40+ FT ATT	42 vs. William & Mary (12/8/18)
10+ REB MARG.	+13 vs. MTSU (2/27/21)
20+ REB MARG.	+20 vs. Marshall (2/22/20)
30+ REB MARG.	+33 vs. Florida Atlantic (3/13/19)
20+ OFF REBS	21 vs. S.C. State (11/9/21)

OVERTIME

Game	W, 90-89 vs. CLT (3/11/21)
Win	W, 90-89 vs. CLT (3/11/21)
Loss	L, 87-80 vs. CLT (2/13/21)
Road Game	L, 87-80 vs. CLT (2/13/21)

INDIVIDUAL

50+ Points	Anne Donovan (50) vs. Norfolk State (12/11/80)
40+ Points	Jennie Simms (41) at Florida Atlantic (2/4/17)
30+ Points	Amari Young (31) vs. CLT (3/11/21)
Triple-Double	Ticha Penicheiro (22p/15r/14s) vs. St. Francis, PA (3/13/98)
Double-Double (P/R)	Ajah Wayne (25p/17r) vs. Rice (3/12/21)
Double-Double (P/A)	Taylor Edwards vs. Jacksonville (11/24/18)
2 players with D/D	A. Young / A. Wayne vs. MTSU (1/26/21)
10+ 3PT	TJ Jordan (10) vs. Northeastern (2/8/07)
20+ FT ATT	Ajah Wayne (20) at Cincinnati (11/12/18)
15+ REB	Ajah Wayne (17) vs. Rice (3/12/21)
20+ REB	Amari Young (24) vs. CLT (2/10/21)
10+ OFF REB	Ashley Scott (11) vs. Florida Atlantic (3/13/19)
10+ ASTS	Taylor Edwards (10) vs. Jacksonville (11/24/18)
5+ BLKS	Marie Reichert (5) vs. Campbell (11/8/19)
5+ STLS	Amari Young (5) vs. GW(12/28/20)

MONARCH NOTES CONTINUED..

free throw percentage. He was drafted by the Chicago Bulls in the second round of the 1998 NBA Draft and played in 325 games with seven different franchises. Williams was also a decorated player in several European domestic leagues and has represented the Republic of Georgia on the international stage. He has previously served as a men's basketball assistant coach at Furman, Tulane and WKU.

- Jones Jr. was elevated to the role of assistant coach and co-recruiting coordinator after serving as the program's director of basketball operations last season. Prior to ODU, Jones Jr. was a girl's basketball assistant coach at Etiwanda High School in California, where he coached current Monarch **Joy Campbell**. Jones Jr. previously served under Milton-Jones at Pepperdine in 2017-18 and helped lay the groundwork for the Waves' 22-win team the following season. He played professionally in nine different countries and was a junior college honorable mention all-American at Cochise College.

- No stranger to ODU women's basketball, Green was hired as the new director of basketball operations. He was a former student manager and office assistant and eventual interim video coordinator for the Monarchs and graduated from ODU in 2016. Following graduation, Green was a women's basketball GA at Detroit then worked for women's hoops at Memphis for three seasons, first as the video coordinator and then the director of basketball operations.

MONARCHS ADD 10 FOR 2021-22 SEASON

Head coach **DeLisha Milton-Jones** added 10 newcomers prior to the start of the season. The 10-member signing class includes five freshmen, four Division I transfers and a second team junior college all-American.

- **Iggy Allen** comes to ODU as a graduate transfer. Last season she was named C-USA's Newcomer of the Year while at Florida Atlantic. She set single-season Division I-era program records in scoring (22.2 points per game) and rebounding (10.9 rebounds per game) with the Owls. Allen also played at Miami (Fla.) and Mississippi State, where she played in the NCAA Final as a freshman. As a high schooler, Allen was ranked as the No. 43 prospect nationally.

- **Ashanti Barnes-Williams** was rated a top-150 recruit by ProspectsNation coming out of Lake Taylor High School

in Norfolk. She helped lead the Titans to a state title and received VHSL 4A All-State honors in 2020. Additionally, she is a former First Team All-Conference and Second Team All-Tidewater honoree.

- **Joy Campbell** played in 18 of a possible 19 games as a freshman at UC Riverside last season. She was second on the team in both assists and steals. Campbell is a former Sun/Bulletin Player of the Year at Etiwanda High School. The Eagles were ranked as high as sixth nationally by MaxPreps in Campbell's senior season.

- **Kaye Clark** was a Second Team NJCAA All-American for Trinity Valley CC last season. In her two seasons at Trinity Valley, the Cardinals went a combined 54-4 and played for the NJCAA championship in 2021. She averaged 14.2 points, 5.5 rebounds and 4.3 assists per game in her all-American campaign while making 1.5 3-pointers per game at a .407 clip.

- **Brianna Jackson** started her collegiate career at Miami (Fla.), where she played two seasons. Jackson featured in 40 total games for the Hurricanes. She led Miami and was sixth in the ACC in blocks per game (1.30) as a freshman. Jackson was a four-star prospect out of local powerhouse Princess Anne High School and was the fourth-ranked player in the state of Virginia. A former VHSL 5A State Player of the year, she won four state titles with the Cavaliers.

- **Amhyia Moreland** was a two-time state champion with Zebulon B. Vance High School in Charlotte. She had an 11-point, 13-board double-double in the 2021 state title game. She garnered I-Meck Player of the Year honors after averaging 18.3 points and 7.4 rebounds per game as a senior.

- **Kaylen Nelson** averaged 13.4 points and 5.9 rebounds as a senior at Union High School in Tulsa, garnering all-state honors in the process. She was also a First Team All-World honoree as a senior as she helped guide Union to the 6A state semifinals.

- **Alex Rouse** was a multi-sport athlete at Joe T. Robinson High School in Little Rock. She averaged 25.5 points, six rebounds and three assists as a senior en route to all-conference and all-state honors. She played in the state tournament in basketball and also won a state title in soccer. Additionally, she owns one varsity letter for volleyball.

SITUATIONAL RECORDS

STAT	Record (last year)
3 points or less	0-0 (3-2)
4-9 points	0-0 (4-6)
10-19 points	0-0 (3-3)
20+ points	1-0 (3-0)
Night	1-0 (6-5)
Day	0-0 (7-6)
November	1-0 (0-1)
December	0-0 (3-0)
January	0-0 (2-4)
February	0-0 (3-5)
March	0-0 (5-1)
Sunday	0-0 (2-0)
Monday	0-0 (0-0)
Tuesday	1-0 (1-0)
Wednesday	0-0 (1-1)
Thursday	0-0 (3-0)
Friday	0-0 (4-4)
Saturday	0-0 (2-6)

GAME STATS

CATEGORY	STATS
Most Pts	80 vs. S.C. State (11/9)
Low Pts	80 vs. S.C. State (11/9)
Most Opp. Pts	52 vs. S.C. State (11/9)
Low Opp. Pts	vs. S.C. State (11/9)
Largest Lead	32 vs. S.C. State (11/9)
Largest Deficit	N/A
Most Lead Changes	N/A
Longest ODU led	39:45 vs. S.C. State (11/9)
Longest ODU trailed	N/A
Most 1Q Pts	28 vs. S.C. State (11/9)
Low 1Q Pts	28 vs. S.C. State (11/9)
Most Opp. 1Q Pts	15 vs. S.C. State (11/9)
Low Opp. 1Q Pts	15 vs. S.C. State (11/9)
Most 2Q Pts	20 vs. S.C. State (11/9)
Low 2Q Pts	20 vs. S.C. State (11/9)
Most Opp. 2Q Pts	10 vs. S.C. State (11/9)
Low Opp. 2Q Pts	10 vs. S.C. State (11/9)
Most 1st Half Pts	48 vs. S.C. State (11/9)
Low 1st Half Pts	48 vs. S.C. State (11/9)
Most Opp. 1st Half Pts	25 vs. S.C. State (11/9)
Low Opp. 1st Half Pts	25 vs. S.C. State (11/9)
Most 3Q Pts	13 vs. S.C. State (11/9)
Low 3Q Pts	13 vs. S.C. State (11/9)
Most Opp. 3Q Pts	16 vs. S.C. State (11/9)
Low Opp. 3Q Pts	16 vs. S.C. State (11/9)
Most 4Q Pts	19 vs. S.C. State (11/9)
Low 4Q Pts	19 vs. S.C. State (11/9)
Most Opp. 4Q Pts	11 vs. S.C. State (11/9)
Low Opp. 4Q Pts	11 vs. S.C. State (11/9)
Most 2nd Half Pts	32 vs. S.C. State (11/9)
Low 2nd Half Pts	32 vs. S.C. State (11/9)
Most Opp. 2nd Half Pts	27 vs. S.C. State (11/9)
Low Opp. 2nd Half Pts	27 vs. S.C. State (11/9)

AROUND THE LEAGUE

CONFERENCE USA STANDINGS (AS OF NOV. 9)

	C-USA	Pct.	H	A	Overall	Pct.	H	A	N	L10	Streak
EAST											
↔ Charlotte	0-0	.000	0-0	0-0	1-0	1.000	0-0	1-0	0-0	1-0	W1
↔ FIU	0-0	.000	0-0	0-0	0-1	.000	0-1	0-0	0-0	0-1	L1
↔ Florida Atlantic	0-0	.000	0-0	0-0	1-0	1.000	1-0	0-0	0-0	1-0	W1
↔ Marshall	0-0	.000	0-0	0-0	1-0	1.000	1-0	0-0	0-0	1-0	W1
↔ Middle Tennessee	0-0	.000	0-0	0-0	1-0	1.000	1-0	0-0	0-0	1-0	W1
↔ Old Dominion	0-0	.000	0-0	0-0	1-0	1.000	1-0	0-0	0-0	1-0	W1
↔ Western Kentucky	0-0	.000	0-0	0-0	0-1	.000	0-1	0-0	0-0	0-1	L1
WEST											
↔ Louisiana Tech	0-0	.000	0-0	0-0	1-0	1.000	1-0	0-0	0-0	1-0	W1
↔ North Texas	0-0	.000	0-0	0-0	2-0	1.000	2-0	0-0	0-0	2-0	W2
↔ Rice	0-0	.000	0-0	0-0	1-0	1.000	1-0	0-0	0-0	1-0	W1
↔ Southern Miss	0-0	.000	0-0	0-0	1-0	1.000	1-0	0-0	0-0	1-0	W1
↔ UAB	0-0	.000	0-0	0-0	1-0	1.000	1-0	0-0	0-0	1-0	W1
↔ UTEP	0-0	.000	0-0	0-0	1-0	1.000	1-0	0-0	0-0	1-0	W1
↔ UTSA	0-0	.000	0-0	0-0	0-1	.000	0-1	0-0	0-0	0-1	L1

Tuesday, Nov. 9

William Carey at Southern Miss
 Charlotte at Richmond
 St. Edwards at Rice
 Stephen F. Austin at UTSA
 Bluefield State at Marshall
 University of S&A of OK at North Texas
 South Carolina State at Old Dominion
 George Mason at FIU
 Jarvis Christian College at LA Tech
 East Carolina at Middle Tennessee

Coverage

Time (CT)/Results

W, 72-42
 W, 63-45
 W, 84-41
 L, 50-77
 W, 108-45
 W, 93-58
 W, 80-52
 L, 67-69
 W, 107-53
 W, 70-49

Wednesday, Nov. 10

Palm Beach Atlantic at FAU
 Shorter at UAB
 Purdue at WKU

W, 88-41
 W, 76-45
 L, 69-79

Thursday, Nov. 11

Howard at North Texas
 Incarnate Word at UTEP

W, 94-56
 W, 81-47

Friday, Nov. 12

LSU Alexandria at LA Tech
 Florida Memorial at FIU
Preseason WNIT (Manhattan, Kan.)
 WKU vs. North Carolina A&T
 Middle Tennessee at VCU

CUSA.tv

11 a.m.
 3:30 p.m.

YouTube

4 p.m.
 5 p.m.

Saturday, Nov. 13

UAB at Chicago State
 University of North Dakota at UTEP
 UL- Monroe at Southern Miss
 UTSA at Abilene Christian
 Louisiana at Rice

CUSA.tv

CUSA.tv

12 p.m.
 2 p.m.
 2 p.m.
 6 p.m.
 7 p.m.

Sunday, Nov. 14

North Texas at Missouri State
 Auburn at Old Dominion
Preseason WNIT (Manhattan, Kan.)
 WKU at Kansas State
 Marshall at Radford
 Bethune-Cookman at FAU
 North Carolina at Charlotte

ESPN+

ESPN+

CUSA.tv

ESPN+

1 p.m.
 1 p.m.
 1 p.m.
 1 p.m.
 1 p.m.
 2:30 p.m.

TOP 25 POLLS

AP (Preseason)

Rank	Team	Record	Prev. Rank
1	South Carolina (14)	0-0	6
2	UConn (10)	0-0	1
3	Stanford (5)	0-0	2
4	Maryland	0-0	7
5	NC State	0-0	3
6	Louisville	0-0	8
7	Baylor	0-0	5
8	Indiana	0-0	12
9	Iowa	0-0	NR
10	Oregon	0-0	23
11	Michigan	0-0	16
12	Iowa State	0-0	NR
13	Kentucky	0-0	18
14	Oregon State	0-0	NR
15	Tennessee	0-0	13
16	Florida State	0-0	NR
T17	Ohio State	0-0	22
T17	Georgia Tech	0-0	NR
19	West Virginia	0-0	17
20	UCLA	0-0	9
21	South Florida	0-0	19
22	Arizona	0-0	11
23	Texas A&M	0-0	4
24	Virginia Tech	0-0	NR
25	Texas	0-0	NR

USA TODAY/WBCA COACHES (Preseason)

Rank	Team	Record	Prev. Rank
1	South Carolina (13)	0-0	4
T2	Stanford (13)	0-0	1
T2	UConn (6)	0-0	3
4	NC State	0-0	7
5	Maryland	0-0	9
6	Louisville	0-0	6
7	Indiana	0-0	8
8	Baylor	0-0	5
9	Oregon	0-0	15
10	Michigan	0-0	11
11	Iowa	0-0	19
12	Tennessee	0-0	16
13	Kentucky	0-0	21
14	UCLA	0-0	12
15	Arizona	0-0	2
16	Iowa State	0-0	NR
17	Texas A&M	0-0	10
18	Oregon State	0-0	NR
19	Georgia	0-0	13
20	Georgia Tech	0-0	22
21	Texas	0-0	17
22	South Florida	0-0	18
23	West Virginia	0-0	24
24	Florida State	0-0	NR
25	Ohio State	0-0	NR

MONARCH NOTES CONTINUED..

- **Eden Sample** was a nominee for the 2021 McDonald's All-American game and an Atlanta Journal-Constitution 6A All-State Second Teamer as a senior. She received first team all-conference honors as a junior, leading Collins Hill High School in scoring at 16.5 points per game.

- **Taleah Washington** played two seasons at Syracuse and reached the Round of 32 in the 2021 NCAA Tournament. She played in 42 total games for the Orange and was coached by Milton-Jones as a freshman. In high school, Washington was a two-time state champion, a 1,000-point scorer and a two-time MVP of the Rose Classic.

1K WATCH

The Monarchs are likely to add two new members to the 1,000-point club at some point this season. **Ajah Wayne** enters Sunday with 953 career points, and **Amari Young** sits at 896 career points.

In total, 33 ODU players have reached the 1,000-point threshold. The Monarchs boast 15 1,500-point scorers and six 2,000-point scorers. Anne Donovan holds the career scoring record at Old Dominion with 2,719 points in her 136 career games (20.0 per game).

ODU MOURNS LOSS OF MEDINA DIXON

The Monarch family mourns the loss of Medina Dixon, who passed away on Monday. Dixon guided Old Dominion to the 1985 NCAA title, the program's third national championship, and was a 2017 inductee into the ODU Sports Hall of Fame. Dixon played three seasons for the Monarchs and was the Sun Belt Player of the Year in 1985 as well as a Kodak First Team All-American and a finalist for the Naismith Player of the Year award. Known as "Ice," her No. 13 jersey was retired in 2011.

SILVER MONARCHS

The Monarchs are celebrating the 25th anniversary of their 1996-97 national runner-up squad. That year, ODU posted a 34-2 overall record, going 16-0 in conference and winning the sixth of an eventual 17-consecutive CAA crowns.

ODU opened the NCAA Tournament with a 102-52 win over Liberty then survived in overtime vs. Purdue, 69-65. After a comfortable win over LSU to reach the Elite Eight, the Monarchs eked out a pair of one-point wins to reach the title game for the first time since winning it all in 1985. The Monarchs topped Florida and current head coach **DeLisha Milton-Jones** in the Elite Eight before beating

Stanford 83-82 in the Final Four. Old Dominion ran in to a Tennessee team in the midst of an run of 46-straight wins and back-to-back national titles and lost 68-59 in the championship game.

A NEW VOICE FOR THE MONARCHS

Longtime Hampton Roads area sports broadcaster **Matthew Hatfield** was hired in early October to be the new play-by-play announcer for ODU women's basketball. A native of Virginia Beach, Hatfield has been covering sports in the state for nearly two decades. He joined VirginiaPreps.com in December of 2004 and became the site's publisher in 2016.

In 2010, was hired by Max Media and has been hosting a weekly or daily show on ESPN Radio 94.1 FM for 11 years, making him the longest-tenured active local sports radio host in the Tidewater market. He currently hosts the 757 Saturday Sports Talk from 10 a.m. to noon on ESPN Radio 94.1.

All ODU women's basketball games can be heard on ESPN Radio 94.1 FM or Money Talk 1310 AM/100.9 FM/97.3 HD2FM. Joining Hatfield on the call will be former Monarch women's basketball assistant coach Susan Montgomery.

2021-22 STREAM INFORMATION

All home contests during the 2021-22 season are streaming live on either CUSA.tv or ESPN+. Twelve of ODU's 14 home games will be found on CUSA.tv, while the Monarch's matchups with Auburn (Nov. 14) and Rice (Jan. 20) will be on ESPN+. In addition, ODU's Feb. 5 game at WKU will broadcast live on ESPN+ with all other road conference games appearing on CUSA.tv.

CUSA.tv offers three payment options, including a 24-hour pass (\$6.95), a monthly recurring subscription (\$10.95), and a yearly pass (\$99.95). ESPN+ is available for \$6.99 per month or for an annual subscription of \$69.99.

STAYING SOCIAL

Be sure to follow Old Dominion women's basketball on Facebook (@ODUWBB), Twitter (@ODU_WBB) and Instagram (@oduwbasketball) to stay up-to-date with the program.

In addition, follow Old Dominion University Athletics on Facebook (@ODUsports), Twitter (@ODUSports) and Instagram (@odusports) for all things ODU sports related.



#0 JOY CAMPBELL

5-6 | SOPHOMORE | GUARD | FONTANA, CALIF. | UC RIVERSIDE | ETIWANDA

PLAYER NOTES

- Made her ODU debut vs. South Carolina State and played 10 minutes.
- Played in 18 of a possible 19 games as a freshman at UC Riverside and was 2nd on the team in assists (28) and steals (29).
- Former Sun/Bulletin Girls' Basketball Player of the Year and Inland Empire Co-MVP at Etiwanda High School.
- Majoring in biology and intends to become a neonatal doctor.

CAREER HIGHS

PTS: 10, Cal Poly - 1/30/21*
 RBS: 7, Cal St. Fullerton - 2/5/21*
 AST: 6 (2x), last: UC Santa Barbara - 2/26/21*
 STL: 5, Fresno Pacific - 12/10/20*
 BLK: 1, Cal Poly - 1/29/21*
 MIN: 35, Cal St. Fullerton - 2/6/21*
 FG: 4 (2x), last: Cal St. Fullerton - 2/6/21*
 FGA: 10, UC Santa Barbara - 2/27/21*
 3FG: 1 (2x), last: Cal Poly - 1/30/21*
 3FGA: 2 (3x), last: Cal St. Fullerton - 2/6/21*
 FT: 5, Cal Poly - 1/29/21*
 FTA: 6, Cal Poly - 1/29/21*
 *at previous school

SEASON HIGHS

PTS: ---
 RBS: ---
 AST: ---
 STL: ---
 BLK: ---
 MIN: 10, South Carolina State - 11/9/21
 FG: --
 FGA: --
 3FG: --
 3FGA: --
 FT: --
 FTA: --

2021-22 GAME-BY-GAME

Opponent	Date	GS	MIN	Total		3-Pointers		Free throws		Rebounds				PF	A	TO	BLK	STL	PTS	AVG
				FG-FGA	PCT	3FG-3FGA	PCT	FT-FTA	PCT	OFF	DEF	TOT	AVG							
South Carolina St.	11/09/2021		09:45	0-0	.000	0-0	.000	0-0	.000	0	0	0	0.0	0	0	0	0	0	0	0.0
Totals		0	09:45	0-0	.000	0-0	.000	0-0	.000	0	0	0	0.0	0	0	0	0	0	0	0.0

CAREER STATISTICS

SEASON	TEAM	GP-GS	MIN/AVG	Field Goals		3-Point		F-Throws		Rebounds				Scoring						
				FG-FGA	FG%	3FG-3FGA	3FG%	FT-FTA	FT%	OFF	DEF	TOT	AVG	Pf-FO	A	TO	BLK	STL	PTS	AVG
2020-21	UCR	18-7	319/17.7	23-62	.371	2-8	.250	17-22	.773	5	28	33	1.8	40-1	28	31	1	29	65	3.6
2021-22	ODU	1-0	10/9.8	0-0	.000	0-0	.000	0-0	.000	0	0	0	0.0	0-0	0	0	0	0	0	0.0
TOTAL FOR ODU		1-0	10/9.8	0-0	.000	0-0	.000	0-0	.000	0	0	0	0.0	0-0	0	0	0	0	0	0.0
TOTAL		19-7	328/17.3	23-62	.371	2-8	.250	17-22	.773	5	28	33	1.7	40-1	28	31	1	29	65	3.4



#1 MARIAH ADAMS

6-0 | SENIOR | GUARD | LITTLE ROCK, ARK. | ESTEM

PLAYER NOTES

- Started ODU's opener vs. South Carolina State. Finished with 10 points on 4-of-9 shooting and matched a career-high with four steals.
- Started all 24 games a season ago and led the team with 96 assists. Was 4th in C-USA with a 1.78 assist-to-turnover ratio.
- Had career highs of 24 points and nine rebounds at Charlotte on Feb. 13 and was 4-for-4 from deep. Dished a career-high eight assists vs. WKU in the C-USA Tournament against the Tribe.

GAME HIGHS

PTS: 13, 2x last vs. William & Mary - 12/5/19
RBS: 7, Florida Atlantic - 1/25/20
AST: 6, Auburn - 11/14/19
STL: 4, 3x last vs. S.C. State - 11/9/21
BLK: 3, Norfolk State - 11/9/18
MIN: 36, UMES - 12/8/19
FG: 5, 4x last vs. Charlotte - 1/11/20
FGA: 15, Saint Mary's - 12/22/18
3FG: 3, Saint Mary's - 12/22/18
3FGA: 9, Saint Mary's - 12/22/18
FT: 6, William & Mary - 12/5/19
FTA: 6, 2x last vs. William & Mary - 12/5/19

SEASON HIGHS

PTS: 10, vs. S.C. State - 11/9/21
RBS: 1, vs. S.C. State - 11/9/21
AST: 2, vs. S.C. State - 11/9/21
STL: 4, vs. S.C. State - 11/9/21
BLK: ---
MIN: 25, vs. S.C. State - 11/9/21
FG: 4, vs. S.C. State - 11/9/21
FGA: 9, vs. S.C. State - 11/9/21
3FG: ---
3FGA: 2, vs. S.C. State - 11/9/21
FT: 2, vs. S.C. State - 11/9/21
FTA: 2, vs. S.C. State - 11/9/21

2021-22 GAME-BY-GAME

Opponent	Date	GS	MIN	Total		3-Pointers		Free throws		Rebounds				PF A TO BLK STL PTS AVG						
				FG-FGA	PCT	3FG-3FGA	PCT	FT-FTA	PCT	OFF	DEF	TOT	AVG	PF	A	TO	BLK	STL	PTS	AVG
South Carolina St.	11/09/2021	*	24:22	4-9	.444	0-2	.000	2-2	1.000	0	1	1	1.0	4	2	1	0	4	10	10.0
Totals		1	24:22	4-9	.444	0-2	.000	2-2	1.000	0	1	1	1.0	4	2	1	0	4	10	10.0

CAREER STATISTICS

Season	gp-gs	min/avg	Total		3-Point		F-Throws		Rebounds				Scoring							
			fg-fga	pct	fg-fga	pct	ft-fta	pct	off	def	tot	avg	pf	fo	ast	to	blk	stl	pts	avg
2018-19	32-4	739/23.1	52-168	.310	22-90	.244	29-39	.744	19	74	93	2.9	71	1	60	43	7	24	155	4.8
2019-20	28-2	655/23.4	62-156	.397	13-50	.260	29-39	.744	28	71	99	3.5	52	0	62	52	7	28	166	5.9
2020-21	24-24	769/32.0	79-203	.389	15-41	.366	29-40	.725	29	70	99	4.1	66	2	96	54	9	30	202	8.4
2021-22	1-1	25/25.0	4-9	.444	0-2	.000	2-2	1.000	0	1	1	1.0	4	0	2	1	0	4	10	10.0
TOTAL	85-31	2188/25.7	197-536	.368	50-183	.273	89-120	.742	76	216	292	3.4	193	3	220	150	23	86	533	6.3



#2 IGGY ALLEN

5-11 | GRADUATE | GUARD | POMPANO BEACH, FLA. | DILLARD | FLORIDA ATLANTIC

PLAYER NOTES

- Drew a starting assignment in her 1st game with the Monarchs. Shared the team high in points (15) and rebounds (7). Made both of her 3-point attempts.
- 2021 C-USA Newcomer of the Year at FAU. Set program DI-era records for scoring (22.2) and rebounding (10.9). Ranked 2nd in C-USA in scoring, 3rd in rebounding and 4th in steals. Top-25 nationally in scoring, defensive rebounding and total rebounds.
- Spent the 2018-19 and 2019-20 seasons at Miami (Fla.). Sat out 2018-19 due to transfer regulations.
- Began her career at Mississippi State, played in the 2017 NCAA title game.

CAREER HIGHS

PTS: 35, Western Kentucky - 2/5/21*
RBS: 18, Southern Miss - 2/26/21*
AST: 5, Florida Memorial - 12/18/20*
STL: 6, Old Dominion - 1/9/21*
BLK: 3, Western Kentucky - 2/5/21*
MIN: 38, Charlotte - 3/6/21*
FG: 14, Western Kentucky - 2/5/21*
FGA: 25 (4x), last: UAB - 3/10/21*
3FG: 5 (3x), last: Southern Miss - 2/26/21*
3FGA: 9 (2x), last: Middle Tennessee - 1/1/21*
FT: 9, UAB - 3/10/21
FTA: 10, UTEP - 2/21/21
 *at previous school

SEASON HIGHS

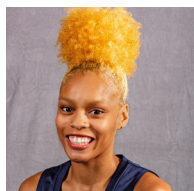
PTS: 15, S.C. State - 11/9/21
RBS: 7, S.C. State - 11/9/21
AST: 1, S.C. State - 11/9/21
STL: 3, S.C. State - 11/9/21
BLK: ---
MIN: 22, S.C. State - 11/9/21
FG: 6, S.C. State - 11/9/21
FGA: 13, S.C. State - 11/9/21
3FG: 2, S.C. State - 11/9/21
3FGA: 2, S.C. State - 11/9/21
FT: 1, S.C. State - 11/9/21
FTA: 2, S.C. State - 11/9/21

2021-22 GAME-BY-GAME

Opponent	Date	GS	MIN	Total		3-Pointers		Free throws		Rebounds				Scoring						
				FG-FGA	PCT	3FG-3FGA	PCT	FT-FTA	PCT	OFF	DEF	TOT	AVG	PF	A	TO	BLK	STL	PTS	AVG
South Carolina St.	11/09/2021	*	22:23	6-13	.462	2-2	1.000	1-2	.500	3	4	7	7.0	2	1	0	0	3	15	15.0
Totals		1	22:23	6-13	.462	2-2	1.000	1-2	.500	3	4	7	7.0	2	1	0	0	3	15	15.0

CAREER STATISTICS

SEASON	TEAM	GP-GS	MIN/AVG	Field Goals		3-Point		F-Throws		Rebounds				Scoring						
				FG-FGA	FG%	3FG-3FGA	3FG%	FT-FTA	FT%	OFF	DEF	TOT	AVG	PF-FO	A	TO	BLK	STL	PTS	AVG
2016-17	MSU	20-0	111/5.6	22-46	.478	0-1	.000	9-14	.643	8	9	17	0.9	13-0	9	16	0	8	53	2.7
2019-20	Miami	12-0	109/9.1	9-27	.333	1-4	.250	4-8	.500	11	7	18	1.5	15-0	5	13	0	6	23	1.9
2020-21	FAU	22-22	717/32.6	186-427	.436	50-129	.388	67-96	.698	62	178	240	10.9	81-5	53	88	6	49	489	22.2
2021-22	ODU	1-1	22/22.4	6-13	.462	2-2	1.000	1-2	.500	3	4	7	7.0	2-0	1	0	0	3	15	15.0
TOTAL FOR ODU		1-1	22/22.4	6-13	.462	2-2	1.000	1-2	.500	3	4	7	7.0	2-0	1	0	0	3	15	15.0
TOTAL		55-23	959/17.4	223-513	.435	53-136	.390	81-120	.675	84	198	282	5.1	111-5	68	117	6	66	580	10.5



#3 TALEAH WASHINGTON

5-7 | JUNIOR | GUARD | DISTRICT HEIGHTS, MD. | FORESTVILLE | SYRACUSE

PLAYER NOTES

- Made her ODU debut vs. S.C. State and scored six points. Made a career-high four free throws and matched a personal-best with five attempts from the line.
- A two-year player at Syracuse. Reached the Round of 32 in the 2021 NCAA Tournament. A member of the SAACEquity Group.
- A 1,000-point scorer and two-time state champion in high school.

CAREER HIGHS

PTS: 10 (2x), last: UMES - 11/12/19*
RBS: 4 (2x), last: UMBC - 12/8/19*
AST: 2 (3x), last: Florida State - 1/2/20*
STL: 2, Louisville - 3/6/20*
BLK: 1 (2x), last: S.C. State - 11/9/21
MIN: 23, Ohio - 11/5/19*
FG: 4 (3x), last: Albany - 11/16/19*
FGA: 11, UMES - 11/12/19*
3FG: 2 (4x), last: Pittsburgh - 1/28/21*
3FGA: 8, UMES - 11/12/19*
FT: 4, S.C. State - 11/9/21
FTA: 5 (2x), last: S.C. State - 11/9/21
 *at previous school

SEASON HIGHS

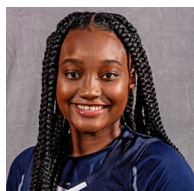
PTS: 6, S.C. State - 11/9/21
RBS: 2, S.C. State - 11/9/21
AST: 1, S.C. State - 11/9/21
STL: 1, S.C. State - 11/9/21
BLK: 1, S.C. State - 11/9/21
MIN: 13, S.C. State - 11/9/21
FG: 1, S.C. State - 11/9/21
FGA: 5, S.C. State - 11/9/21
3FG: ---
3FGA: 1, S.C. State - 11/9/21
FT: 4, S.C. State - 11/9/21
FTA: 5, S.C. State - 11/9/21

2021-22 GAME-BY-GAME

Opponent	Date	GS	MIN	Total		3-Pointers		Free throws		Rebounds				Other						
				FG-FGA	PCT	3FG-3FGA	PCT	FT-FTA	PCT	OFF	DEF	TOT	AVG	PF	A	TO	BLK	STL	PTS	AVG
South Carolina St.	11/09/2021		13:27	1-5	.200	0-1	.000	4-5	.800	0	2	2	2.0	1	1	3	1	1	6	6.0
Totals		0	13:27	1-5	.200	0-1	.000	4-5	.800	0	2	2	2.0	1	1	3	1	1	6	6.0

CAREER STATISTICS

SEASON	TEAM	GP-GS	MIN/AVG	Field Goals		3-Point		F-Throws		Rebounds				Other					Scoring	
				FG-FGA	FG%	3FG-3FGA	3FG%	FT-FTA	FT%	OFF	DEF	TOT	AVG	PF	FO	A	TO	BLK	STL	PTS
2019-20	Syr	29-0	310/10.7	33-109	.303	16-66	.242	10-18	.556	13	13	26	0.9	31-1	12	20	1	7	92	3.2
2020-21	Syr	13-0	146/11.3	8-31	.258	3-21	.143	2-2	1.000	3	10	13	1.0	8-0	4	9	0	3	21	1.6
2021-22	ODU	1-0	13/13.4	1-5	.200	0-1	.000	4-5	.800	0	2	2	2.0	1-0	1	3	1	1	6	6.0
TOTAL FOR ODU		1-0	13/13.4	1-5	.200	0-1	.000	4-5	.800	0	2	2	2.0	1-0	1	3	1	1	6	6.0
TOTAL		43-0	470/10.9	42-145	.290	19-88	.216	16-25	.640	16	25	41	1.0	40-1	17	32	2	11	119	2.8



#4 AZIAH HUDSON

5-6 | SENIOR | GUARD | BALDWIN, N.Y. | BALDWIN

PLAYER NOTES

- Scored two points off the bench in ODU's season opener vs. S.C. State
- 2nd on the team last season with 31 3-pointers, shooting .316 from deep.
- Matched a career high with 23 points at Marshall (Feb. 6, 2021). Had a personal-best six assists vs. WKU in the C-USA Tournament Preliminary Round.
- Named C-USA Co-Sixth Player of the year in 2020, was 14th in the conference with 48 treys.

CAREER HIGHS

PTS: 23, Marshall - 2/6/21
RBS: 4 (3x), last: Charlotte - 2/13/21
AST: 6, WKU - 3/9/21
STL: 4, Florida Atlantic - 2/26/20
BLK: 2 (2x), last: Florida Atlantic - 1/8/21
MIN: 46, Charlotte - 2/10/21
FG: 8, Marshall - 2/6/21
FGA: 16, FIU - 1/1/21
3FG: 6, LA Tech - 2/1/20
3FGA: 14, Marshall - 3/2/19
FT: 7, Campbell - 11/6/18
FTA: 7, Campbell - 11/6/18

SEASON HIGHS

PTS: 2, S.C. State - 11/9/21
RBS: ---
AST: 1, S.C. State - 11/9/21
STL: 1, S.C. State - 11/9/21
BLK: ---
MIN: 19, S.C. State - 11/9/21
FG: 1, S.C. State - 11/9/21
FGA: 5, S.C. State - 11/9/21
3FG: ---
3FGA: 4, S.C. State - 11/9/21
FT: ---
FTA: 4, S.C. State - 11/9/21

2021-22 GAME-BY-GAME

Opponent	Date	GS	MIN	Total		3-Pointers		Free throws		Rebounds				PF	A	TO	BLK	STL	PTS	AVG
				FG-FGA	PCT	3FG-3FGA	PCT	FT-FTA	PCT	OFF	DEF	TOT	AVG							
South Carolina St.	11/09/2021		18:26	1-5	.200	0-4	.000	0-2	.000	0	0	0	0.0	1	1	1	0	1	2	2.0
Totals		0	18:26	1-5	.200	0-4	.000	0-2	.000	0	0	0	0.0	1	1	1	0	1	2	2.0

CAREER STATISTICS

Season	gp-gs	min/avg	Total		3-Point		F-Throws		Rebounds				Scoring							
			fg-fga	pct	fg-fga	pct	ft-fta	pct	off	def	tot	avg	pf	fo	ast	to	blk	stl	pts	avg
2018-19	32-12	818/25.6	87-249	.349	55-181	.304	41-59	.695	6	29	35	1.1	46	0	21	36	5	24	270	8.4
2019-20	30-2	647/21.6	66-183	.361	48-141	.340	16-18	.889	7	22	29	1.0	37	0	24	12	1	13	196	6.5
2020-21	23-7	661/28.7	66-166	.398	31-98	.316	29-37	.784	16	24	40	1.7	40	1	24	17	3	16	192	8.3
2021-22	1-0	19/19.0	1-5	.200	0-4	.000	0-2	.000	0	0	0	0.0	1	0	1	1	0	1	2	2.0
TOTAL	86-21	2145/24.9	220-603	.365	134-424	.316	86-116	.741	29	75	104	1.2	124	1	70	66	9	54	660	7.7



#5 ASHANTI BARNES-WILLIAMS

6-1 | FRESHMAN | FORWARD | NORFOLK, VA. | LAKE TAYLOR

PLAYER NOTES

- Made her collegiate debut against S.C. State. Filled the box score with five points, two rebounds, two assists and two steals. Played 13 minutes, the most among the Monarchs' five freshmen.

- A top-150 recruit by ProspectsNation.com. Won a 4A state title with Lake Taylor in Norfolk. 4A All-State in 2020 and a former first team all-region and second team all-Tidewater honoree.

CAREER HIGHS

PTS: 5, S.C. State - 11/9/21
RBS: 2, S.C. State - 11/9/21
AST: 2, S.C. State - 11/9/21
STL: 2, S.C. State - 11/9/21
BLK: ---
MIN: 13, S.C. State - 11/9/21
FG: 1, S.C. State - 11/9/21
FGA: 4, S.C. State - 11/9/21
3FG: ---
3FGA: 2, S.C. State - 11/9/21
FT: 3, S.C. State - 11/9/21
FTA: 5, S.C. State - 11/9/21

SEASON HIGHS

PTS: 5, S.C. State - 11/9/21
RBS: 2, S.C. State - 11/9/21
AST: 2, S.C. State - 11/9/21
STL: 2, S.C. State - 11/9/21
BLK: ---
MIN: 13, S.C. State - 11/9/21
FG: 1, S.C. State - 11/9/21
FGA: 4, S.C. State - 11/9/21
3FG: ---
3FGA: 2, S.C. State - 11/9/21
FT: 3, S.C. State - 11/9/21
FTA: 5, S.C. State - 11/9/21

2021-22 GAME-BY-GAME

Opponent	Date	GS	MIN	Total		3-Pointers		Free throws		Rebounds				Other						
				FG-FGA	PCT	3FG-3FGA	PCT	FT-FTA	PCT	OFF	DEF	TOT	AVG	PF	A	TO	BLK	STL	PTS	AVG
South Carolina St.	11/09/2021		13:42	1-4	.250	0-2	.000	3-5	.600	1	1	2	2.0	4	2	1	0	2	5	5.0
Totals		0	13:42	1-4	.250	0-2	.000	3-5	.600	1	1	2	2.0	4	2	1	0	2	5	5.0

CAREER STATISTICS

SEASON	TEAM	GP-GS	MIN/AVG	Field Goals		3-Point		F-Throws		Rebounds				Scoring						
				FG-FGA	FG%	3FG-3FGA	3FG%	FT-FTA	FT%	OFF	DEF	TOT	AVG	PF-FO	A	TO	BLK	STL	PTS	AVG
2021-22	ODU	1-0	14/13.7	1-4	.250	0-2	.000	3-5	.600	1	1	2	2.0	4-0	2	1	0	2	5	5.0
TOTAL		1-0	14/13.7	1-4	.250	0-2	.000	3-5	.600	1	1	2	2.0	4-0	2	1	0	2	5	5.0



#11 KAYE CLARK

5-7 | JUNIOR | GUARD | MILWAUKEE, WISC. | RUFUS KING | TRINITY VALLEY

PLAYER NOTES

- Made her team debut vs. S.C. State. Was one of five Monarchs to score in double figures (11) and shared the game high with four steals.
- Shot 4-for-8 from the floor against the Bulldogs and made two of her three long-range attempts.
- A Second Team NJCAA All-American in 2021. Averaged 14.2 points, 5.5 rebounds and 4.3 assists on .534 shooting that season. Guided Trinity Valley to a 22-3 record and the NJCAA title game.
- Played 51 total games at Trinity Valley, averaging 11.9 points, 4.6 rebounds, 3.9 assists and 2.4 steals per game.

CAREER HIGHS

PTS: 11, S.C. State - 11/9/21
RBS: 5, S.C. State - 11/9/21
AST: 1, S.C. State - 11/9/21
STL: 4, S.C. State - 11/9/21
BLK: 1, S.C. State - 11/9/21
MIN: 22, S.C. State - 11/9/21
FG: 4, S.C. State - 11/9/21
FGA: 8, S.C. State - 11/9/21
3FG: 2, S.C. State - 11/9/21
3FGA: 3, S.C. State - 11/9/21
FT: 1, S.C. State - 11/9/21
FTA: 2, S.C. State - 11/9/21

SEASON HIGHS

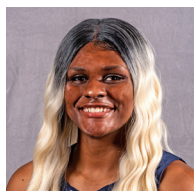
PTS: 11, S.C. State - 11/9/21
RBS: 5, S.C. State - 11/9/21
AST: 1, S.C. State - 11/9/21
STL: 4, S.C. State - 11/9/21
BLK: 1, S.C. State - 11/9/21
MIN: 22, S.C. State - 11/9/21
FG: 4, S.C. State - 11/9/21
FGA: 8, S.C. State - 11/9/21
3FG: 2, S.C. State - 11/9/21
3FGA: 3, S.C. State - 11/9/21
FT: 1, S.C. State - 11/9/21
FTA: 2, S.C. State - 11/9/21

2021-22 GAME-BY-GAME

Opponent	Date	GS	MIN	Total		3-Pointers		Free throws		Rebounds				Other						
				FG-FGA	PCT	3FG-3FGA	PCT	FT-FTA	PCT	OFF	DEF	TOT	AVG	PF	A	TO	BLK	STL	PTS	AVG
South Carolina St.	11/09/2021	*	22:10	4-8	.500	2-3	.667	1-2	.500	4	1	5	5.0	2	1	3	1	4	11	11.0
Totals		1	22:10	4-8	.500	2-3	.667	1-2	.500	4	1	5	5.0	2	1	3	1	4	11	11.0

CAREER STATISTICS

SEASON	TEAM	GP-GS	MIN/AVG	Field Goals		3-Point		F-Throws		Rebounds				Scoring						
				FG-FGA	FG%	3FG-3FGA	3FG%	FT-FTA	FT%	OFF	DEF	TOT	AVG	PF	FO	A	TO	BLK	STL	PTS
2021-22	ODU	1-1	22/22.2	4-8	.500	2-3	.667	1-2	.500	4	1	5	5.0	2-0	1	3	1	4	11	11.0
TOTAL		1-1	22/22.2	4-8	.500	2-3	.667	1-2	.500	4	1	5	5.0	2-0	1	3	1	4	11	11.0



#12 BRIANNA JACKSON

6-3 | JUNIOR | FORWARD | VIRGINIA BEACH, VA. | PRINCESS ANNE | MIAMI (FLA.)

PLAYER NOTES

- Made her Monarch debut vs. S.C. State, logging two points and one rebound in six minutes of action.
- Played 40 games across two seasons at Miami (Fla.). Led the team and was sixth in the ACC with 1.30 blocks per game as a freshman. Had her first double-double with 14 points and 10 boards vs. Florida State in 2019-20.
- Rated a four-star prospect by espnW HoopGurlz and ProspectsNation.com. Ranked top-100 nationally and was the 17th-best post player in the country. The fourth-ranked prospect in the state of Virginia. A four-time 5A state champion at local powerhouse Princess Anne High School. Also a former 5A state player of the year. Averaged a double-double as a senior.

CAREER HIGHS

PTS: 14 (2x), last: Jacksonville - 11/25/20*
RBS: 10, Florida State - 1/5/20*
AST: 2 (3x), last: North Florida - 11/28/20*
STL: 4, NC State - 2/20/20*
BLK: 5, Florida State - 1/26/20*
MIN: 32, Florida State - 1/26/20*
FG: 6 (2x), last: Wake Forest - 2/27/20*
FGA: 13, Florida State - 1/5/20*
3FG: 1, Jackson State - 11/10/19*
3FGA: 2, Jackson State - 11/10/19*
FT: 6, Florida Atlantic - 12/3/20*
FTA: 7, Louisville - 1/9/20*

SEASON HIGHS

PTS: 2, S.C. State - 11/9/21
RBS: 1, S.C. State - 11/9/21
AST: ---
STL: ---
BLK: 1, S.C. State - 11/9/21
MIN: 6, S.C. State - 11/9/21
FG: 1, S.C. State - 11/9/21
FGA: 2, S.C. State - 11/9/21
3FG: ---
3FGA: ---
FT: ---
FTA: ---

*at previous school

2021-22 GAME-BY-GAME

Opponent	Date	GS	MIN	Total		3-Pointers		Free throws		Rebounds				PF				PTS		
				FG-FGA	PCT	3FG-3FGA	PCT	FT-FTA	PCT	OFF	DEF	TOT	AVG	A	TO	BLK	STL	PTS	AVG	
South Carolina St.	11/09/2021		05:32	1-2	.500	0-0	.000	0-0	.000	1	0	1	1.0	0	0	1	1	0	2	2.0
Totals		0	05:32	1-2	.500	0-0	.000	0-0	.000	1	0	1	1.0	0	0	1	1	0	2	2.0

CAREER STATISTICS

SEASON	TEAM	GP-GS	MIN/AVG	Field Goals		3-Point		F-Throws		Rebounds				PF				Scoring		
				FG-FGA	FG%	3FG-3FGA	3FG%	FT-FTA	FT%	OFF	DEF	TOT	AVG	P	F	A	TO	BLK	STL	PTS
2019-20	Miami	30-16	507/16.9	56-112	.500	1-6	.167	33-52	.635	46	90	136	4.5	83-4	10	27	39	30	146	4.9
2020-21	Miami	10-4	84/8.4	11-24	.458	0-3	.000	13-14	.929	10	16	26	2.6	15-0	2	5	4	4	35	3.5
2021-22	ODU	1-0	6/5.5	1-2	.500	0-0	.000	0-0	.000	1	0	1	1.0	0-0	0	1	1	0	2	2.0
TOTAL FOR ODU		1-0	6/5.5	1-2	.500	0-0	.000	0-0	.000	1	0	1	1.0	0-0	0	1	1	0	2	2.0
TOTAL		41-20	597/14.6	68-138	.493	1-9	.111	46-66	.697	57	106	163	4.0	98-4	12	33	44	34	183	4.5



#14 AJAH WAYNE

5-10 | SENIOR | GUARD/FORWARD | BIRMINGHAM, ALA. | RAMSAY

PLAYER NOTES

- A Preseason All-Conference USA honoree. Shared the team high with 15 points against S.C. State. Also shared the team high with seven rebounds.

- Named Second Team All-State by VaSID as a junior. Averaged 15.5 points and 9.7 rebounds per game. Averaged 22.5 points, 11.0 rebounds and 2.5 steals per game at the Conference USA Tournament, receiving all-tournament team honors. Ranked 3rd in C-USA with a .530 field goal percentage and led the league with 3.8 offensive boards per game.

- A Second Team All-C-USA honoree as a sophomore in 2019-20. Dropped a career-high 35 points with six 3-pointers at Auburn, leading ODU to its first win over a Power 5 opponent since 2015.

- Named to the C-USA All-Freshman and All-Defensive teams in 2018-19. Averaged 11.9 points, 7.9 rebounds, 2.1 assists and 1.7 steals as a rookie. Had the sixth-most points (345) and the fifth-most boards (245) by a freshman in school history.

CAREER HIGHS

PTS: 35, Auburn - 11/14/19
RBS: 16, Cincinnati - 11/12/18
AST: 7, Florida Atlantic - 1/10/19
STL: 6, Jacksonville - 11/24/18
BLK: 2 (5x), last: Southern Miss - 1/30/20
MIN: 43, vs. Charlotte - 3/11/21
FG: 14, Auburn - 11/14/19
FGA: 22, Rice - 3/12/21
3FG: 6, Auburn - 11/14/19
3FGA: 9, Marshall - 3/2/19
FT: 14, Cincinnati - 11/12/18
FTA: 20, Cincinnati - 11/12/18

SEASON HIGHS

PTS: 15, S.C. State - 11/9/21
RBS: 7, S.C. State - 11/9/21
AST: 1, S.C. State - 11/9/21
STL: 2, S.C. State - 11/9/21
BLK: 1, S.C. State - 11/9/21
MIN: 26, S.C. State - 11/9/21
FG: 4, S.C. State - 11/9/21
FGA: 13, S.C. State - 11/9/21
3FG: 1, S.C. State - 11/9/21
3FGA: 4, S.C. State - 11/9/21
FT: 6, S.C. State - 11/9/21
FTA: 6, S.C. State - 11/9/21

2021-22 GAME-BY-GAME

Opponent	Date	GS	MIN	Total		3-Pointers		Free throws		Rebounds				Scoring						
				FG-FGA	PCT	3FG-3FGA	PCT	FT-FTA	PCT	OFF	DEF	TOT	AVG	PF	A	TO	BLK	STL	PTS	AVG
South Carolina St.	11/09/2021	*	26:39	4-13	.308	1-4	.250	6-6	1.000	4	3	7	7.0	1	1	1	1	2	15	15.0
Totals		1	26:39	4-13	.308	1-4	.250	6-6	1.000	4	3	7	7.0	1	1	1	1	2	15	15.0

CAREER STATISTICS

Season	gp-gs	min/avg	Total		3-Point		F-Throws		Rebounds				Scoring							
			fg-fga	pct	fg-fga	pct	ft-fta	pct	off	def	tot	avg	pf	fo	ast	to	blk	stl	pts	avg
2018-19	31-30	899/29.0	125-349	.358	18-74	.243	101-154	.656	82	163	245	7.9	81	2	65	59	10	53	369	11.9
2019-20	27-27	723/26.8	110-287	.383	15-70	.214	55-91	.604	57	128	185	6.9	52	1	33	54	5	30	290	10.7
2020-21	18-17	562/31.2	105-198	.530	8-37	.216	61-113	.540	69	106	175	9.7	45	1	33	50	3	33	279	15.5
2021-22	1-1	26/26.0	4-13	.308	1-4	.250	6-6	1.000	4	3	7	7.0	1	0	1	1	1	2	15	15.0
TOTAL	77-75	2210/28.7	344-847	.406	42-185	.227	223-364	.613	212	400	612	7.9	179	4	132	164	19	118	953	12.4



#20 MAGGIE ROBINSON

6-0 | GRADUATE | FORWARD | MOBILE, ALA. | SHELTON STATE CC | W.P. DAVISON

PLAYER NOTES

- Started all 24 games for ODU last season. Was fifth on the team in rebounding (5.2) and shot a team-best .367 from deep. Notched a career-high with 19 points vs. Rice on Jan. 16.
- Redshirted the 2019-20 campaign while recovering from a torn ACL suffered prior to the season.
- Played in all 32 games and made 31 starts in her first season at ODU in 2018-19 and averaged 7.1 points and 4.1 rebounds. Scored 17 against No. 13 NC State. Sank the go-ahead 3-pointer with 1:05 remaining in overtime in the Monarchs' win at Cincinnati.
- Made back-to-back NJCAA Final Fours with Shelton State CC. Averaged 12 points and 7.5 rebounds in 2017-18 while leading the conference in shooting percentage, free throw percentage and rebounding. Named to the NJCAA All-Tournament Team.

CAREER HIGHS

PTS: 19, Rice - 1/16/21
RBS: 11, Cincinnati - 11/12/18
AST: 4, Charlotte - 2/23/19
STL: 4, Charlotte - 2/13/21
BLK: 3, UAB - 2/19/21
MIN: 46, Charlotte - 3/11/21
FG: 8, Marshall - 2/5/21
FGA: 15, Charlotte - 2/16/19
3FG: 4, Charlotte - 2/16/19
3FGA: 13, Charlotte - 2/16/19
FT: 5, William & Mary - 12/8/18
FTA: 8, William & Mary - 12/8/18

GAME HIGHS

PTS: ---
RBS: ---
AST: ---
STL: ---
BLK: ---
MIN: ---
FG: ---
FGA: ---
3FG: ---
3FGA: ---
FT: ---
FTA: ---

CAREER STATISTICS

Season	gp-gs		Total		3-Point		F-Throws		Rebounds							Scoring				
	gp-gs	min/avg	fg-fga	pct	fg-fga	pct	ft-fa	pct	off	def	tot	avg	pf	fo	ast	to	blk	stl	pts	avg
2018-19	32-31	791/24.7	77-230	.335	40-149	.268	32-46	.696	48	84	132	4.1	71	0	31	41	6	18	226	7.1
2020-21	24-24	721/30.0	74-169	.438	22-60	.367	19-24	.792	46	78	124	5.2	55	3	23	25	12	15	189	7.9
TOTAL	56-55	1512/27.0	151-399	.378	62-209	.297	51-70	.729	94	162	256	4.6	126	3	54	66	18	33	415	7.4



#23 AMARI YOUNG

5-11 | SENIOR | FORWARD | NORTH AUGUSTA, S.C. | NORTH AUGUSTA

PLAYER NOTES

- Received Preseason All-C-USA honors in October. Started ODU's season opener with S.C. State and posted 11 points, six rebounds and two steals in 21 minutes of action.
- Named Second Team All-Conference and All-State as a junior. Averaged a double-double with 13.6 points and 11.2 rebounds per game. Ranked second in C-USA and 18th nationally in rebounding. Fifth in the conference with 2.05 steals per game. Had a career-high 24 rebounds two times. Scored a personal-best 31 points along with 10 rebounds and five assists in ODU's quarterfinal victory over Charlotte.
- A Second Team All-Conference and C-USA All-Defensive Team selection as a sophomore. Started every game and averaged 10.7 points, 8.2 rebounds and 2.1 steals. Ranked second in the conference in steals and seventh in rebounds .
- Averaged 8.3 points, 6.5 rebounds and 1.6 steals as a freshman, playing in all 32 games.
- The 2017-18 Gatorade South Carolina Player of the Year and two-time state champion.

CAREER HIGHS

PTS: 31, Charlotte - 3/11/21
RBS: 24 (2x), last: WKU - 3/5/21
AST: 5, Charlotte - 3/11/21
STL: 5 (4x), last: George Washington - 11/28/20
BLK: 4, William & Mary - 12/5/19
MIN: 48, Charlotte - 3/11/21
FG: 15, Charlotte - 3/11/21
FGA: 29, Charlotte - 3/11/21
3FG: 1, 7x last vs. Rice - 3/7/20
3FGA: 2, 6x last vs. Rice - 3/7/20
FT: 10, Campbell - 11/8/19
FTA: 12, Campbell - 11/8/19

GAME HIGHS

PTS: 11, S.C. State - 11/9/21
RBS: 6, S.C. State - 11/9/21
AST: ---
STL: 2, S.C. State - 11/9/21
BLK: ---
MIN: 21, S.C. State - 11/9/21
FG: 5, S.C. State - 11/9/21
FGA: 9, S.C. State - 11/9/21
3FG: ---
3FGA: ---
FT: 1, S.C. State - 11/9/21
FTA: 3, S.C. State - 11/9/21

2021-22 GAME-BY-GAME

Opponent	Date	GS	MIN	Total		3-Pointers		Free throws		Rebounds				PF A TO BLK STL PTS AVG						
				FG-FGA	PCT	3FG-3FGA	PCT	FT-FTA	PCT	OFF	DEF	TOT	AVG	P	A	T	B	S	P	A
South Carolina St.	11/09/2021	*	20:53	5-9	.556	0-0	.000	1-3	.333	3	3	6	6.0	2	0	2	0	2	11	11.0
Totals		1	20:53	5-9	.556	0-0	.000	1-3	.333	3	3	6	6.0	2	0	2	0	2	11	11.0

CAREER STATISTICS

Season	gp-gs	min/avg	Total		3-Point		F-Throws		Rebounds				Scoring							
			fg-fga	pct	fg-fga	pct	ft-fa	pct	off	def	tot	avg	pf	fo	ast	to	blk	stl	pts	avg
2018-19	32-3	726/22.7	104-215	.484	6-16	.375	52-102	.510	82	127	209	6.5	82	0	27	45	14	50	266	8.3
2019-20	30-30	859/28.6	129-289	.446	1-19	.053	60-121	.496	88	157	245	8.2	70	1	32	71	24	63	319	10.6
2020-21	22-22	740/33.6	128-284	.451	0-1	.000	44-96	.458	80	166	246	11.2	65	3	39	51	22	45	300	13.6
2021-22	1-1	21/21.0	5-9	.556	0-0	.000	1-3	.333	3	3	6	6.0	2	0	0	2	0	2	11	11.0
TOTAL	85-56	2346/27.6	366-797	.459	7-36	.194	157-322	.488	253	453	706	8.3	219	4	98	169	60	160	896	10.5



#24 EDEN SAMPLE

5-11 | FRESHMAN | GUARD | GWINNETT, GA. | COLLINS HILL

PLAYER NOTES

- Played in ODU's season opener with S.C. State. Made one free throw in four minutes of action.

- A nominee for the 2021 McDonald's All-American game and an Atlanta Journal-Constitution 6A All-State Second Team player as a senior. Led Collins Hill to a 6A state quarterfinal appearance as a senior. Was her team's leading scorer as a junior with 16.5 points per game. The MVP of the Deep South Classic as both a junior and a senior.

CAREER HIGHS

PTS: 1, S.C. State - 11/9/21
 RBS: ---
 AST: ---
 STL: ---
 BLK: ---
 MIN: 4, S.C. State - 11/9/21
 FG: ---
 FGA: ---
 3FG: ---
 3FGA: ---
 FT: 1, S.C. State - 11/9/21
 FTA: 2, S.C. State - 11/9/21

GAME HIGHS

PTS: 1, S.C. State - 11/9/21
 RBS: ---
 AST: ---
 STL: ---
 BLK: ---
 MIN: 4, S.C. State - 11/9/21
 FG: ---
 FGA: ---
 3FG: ---
 3FGA: ---
 FT: 1, S.C. State - 11/9/21
 FTA: 2, S.C. State - 11/9/21

2021-22 GAME-BY-GAME

Opponent	Date	GS	MIN	Total		3-Pointers		Free throws		Rebounds				PF	A	TO	BLK	STL	PTS	AVG
				FG-FGA	PCT	3FG-3FGA	PCT	FT-FTA	PCT	OFF	DEF	TOT	AVG							
South Carolina St.	11/09/2021		03:55	0-0	.000	0-0	.000	1-2	.500	0	0	0	0.0	0	0	0	0	0	1	1.0
Totals		0	03:55	0-0	.000	0-0	.000	1-2	.500	0	0	0	0.0	0	0	0	0	0	1	1.0

CAREER STATISTICS

SEASON	TEAM	GP-GS	MIN/AVG	Field Goals		3-Point		F-Throws		Rebounds				Scoring						
				FG-FGA	FG%	3FG-3FGA	3FG%	FT-FTA	FT%	OFF	DEF	TOT	AVG	PF-FO	A	TO	BLK	STL	PTS	AVG
2021-22	ODU	1-0	4/3.9	0-0	.000	0-0	.000	1-2	.500	0	0	0	0.0	0-0	0	0	0	0	1	1.0
TOTAL		1-0	4/3.9	0-0	.000	0-0	.000	1-2	.500	0	0	0	0.0	0-0	0	0	0	0	1	1.0



#25 KALEN NELSON

5-11 | FRESHMAN | GUARD/FORWARD | TULSA, OKLA. | UNION

PLAYER NOTES

- Played 11 minutes in ODU's season opener vs. S.C. State. Grabbed five rebounds, including a pair of offensive boards.
- Averaged 13.4 points and 5.9 rebounds per game as a senior at Union High School, garnering all-state and All-World honors. Guided Union to the state semifinals in her final season, where it lost to the eventual state champions.
- A Second Team All-World honoree as a junior, averaging 12.8 points per game.

CAREER HIGHS

PTS: ---
 RBS: 5, S.C. State - 11/9/21
 AST: ---
 STL: ---
 BLK: ---
 MIN: 11, S.C. State - 11/9/21
 FG: ---
 FGA: 2, S.C. State - 11/9/21
 3FG: ---
 3FGA: ---
 FT: ---
 FTA: ---

SEASON HIGHS

PTS: ---
 RBS: 5, S.C. State - 11/9/21
 AST: ---
 STL: ---
 BLK: ---
 MIN: 11, S.C. State - 11/9/21
 FG: ---
 FGA: 2, S.C. State - 11/9/21
 3FG: ---
 3FGA: ---
 FT: ---
 FTA: ---

2021-22 GAME-BY-GAME

Opponent	Date	GS	MIN	Total		3-Pointers		Free throws		Rebounds				PF	A	TO	BLK	STL	PTS	AVG
				FG-FGA	PCT	3FG-3FGA	PCT	FT-FTA	PCT	OFF	DEF	TOT	AVG							
South Carolina St.	11/09/2021		10:57	0-2	.000	0-0	.000	0-0	.000	2	3	5	5.0	1	0	0	0	0	0	0.0
Totals		0	10:57	0-2	.000	0-0	.000	0-0	.000	2	3	5	5.0	1	0	0	0	0	0	0.0

CAREER STATISTICS

SEASON	TEAM	GP-GS	MIN/AVG	Field Goals		3-Point		F-Throws		Rebounds				Scoring							
				FG-FGA	FG%	3FG-3FGA	3FG%	FT-FTA	FT%	OFF	DEF	TOT	AVG	PF	FO	A	TO	BLK	STL	PTS	AVG
2021-22	ODU	1-0	11/11.0	0-2	.000	0-0	.000	0-0	.000	2	3	5	5.0	1-0	0	0	0	0	0	0	0.0
TOTAL		1-0	11/11.0	0-2	.000	0-0	.000	0-0	.000	2	3	5	5.0	1-0	0	0	0	0	0	0	0.0



#35 ALEX ROUSE

5-8 | FRESHMAN | GUARD | LITTLE ROCK, ARK. | JOE T. ROBINSON

PLAYER NOTES

- Played four minutes in ODU's season opener vs. S.C. State. Grabbed one offensive rebound.
- A multi-sport athlete at Joe T. Robinson. Scored over 2,000-career points to set the school record. Earned all-conference and all-state recognition as a senior after averaging 25.5 points, six rebounds and three assists per game
- A former state champion in soccer and played volleyball for a season.
- Father played football at Arkansas and for the Chicago Bears.

CAREER HIGHS

PTS: ---
 RBS: 1, S.C. State - 11/9/21
 AST: ---
 STL: ---
 BLK: ---
 MIN: 4, S.C. State - 11/9/21
 FG: ---
 FGA: ---
 3FG: ---
 3FGA: ---
 FT: ---
 FTA: ---

GAME HIGHS

PTS: ---
 RBS: 1, S.C. State - 11/9/21
 AST: ---
 STL: ---
 BLK: ---
 MIN: 4, S.C. State - 11/9/21
 FG: ---
 FGA: ---
 3FG: ---
 3FGA: ---
 FT: ---
 FTA: ---

2021-22 GAME-BY-GAME

Opponent	Date	GS	MIN	Total		3-Pointers		Free throws		Rebounds				Other							
				FG-FGA	PCT	3FG-3FGA	PCT	FT-FTA	PCT	OFF	DEF	TOT	AVG	PF	A	TO	BLK	STL	PTS	AVG	
South Carolina St.	11/09/2021		03:55	0-0	.000	0-0	.000	0-0	.000	1	0	1	1.0	1	0	0	0	0	0	0	0.0
Totals		0	03:55	0-0	.000	0-0	.000	0-0	.000	1	0	1	1.0	1	0	0	0	0	0	0	0.0

CAREER STATISTICS

SEASON	TEAM	GP-GS	MIN/AVG	Field Goals		3-Point		F-Throws		Rebounds				Scoring							
				FG-FGA	FG%	3FG-3FGA	3FG%	FT-FTA	FT%	OFF	DEF	TOT	AVG	PF	FO	A	TO	BLK	STL	PTS	AVG
2021-22	ODU	1-0	4/3.9	0-0	.000	0-0	.000	0-0	.000	1	0	1	1.0	1-0	0	0	0	0	0	0	0.0
TOTAL		1-0	4/3.9	0-0	.000	0-0	.000	0-0	.000	1	0	1	1.0	1-0	0	0	0	0	0	0	0.0



#44 AMHYIA MORELAND

6-1 | FRESHMAN | FORWARD | CHARLOTTE, N.C. | ZEBULON B. VANCE

PLAYER NOTES

- Scored two points and grabbed two rebounds in four minutes of action in ODU's season opener with S.C. State.

- A two-time 4A state champion. Posted an 11-point, 13-rebound double-double in the 2021 state championship. Averaged 18.2 points and 7.4 rebounds per game as a senior, earning I-Meck Player of the Year honors.

CAREER HIGHS

PTS: 2, S.C. State - 11/9/21

RBS: 2, S.C. State - 11/9/21

AST: ---

STL: ---

BLK: ---

MIN: 4, S.C. State - 11/9/21

FG: 1, S.C. State - 11/9/21

FGA: 3, S.C. State - 11/9/21

3FG: ---

3FGA: ---

FT: ---

FTA: ---

SEASON HIGHS

PTS: 2, S.C. State - 11/9/21

RBS: 2, S.C. State - 11/9/21

AST: ---

STL: ---

BLK: ---

MIN: 4, S.C. State - 11/9/21

FG: 1, S.C. State - 11/9/21

FGA: 3, S.C. State - 11/9/21

3FG: ---

3FGA: ---

FT: ---

FTA: ---

2021-22 GAME-BY-GAME

Opponent	Date	GS	MIN	Total		3-Pointers		Free throws		Rebounds				Other						
				FG-FGA	PCT	3FG-3FGA	PCT	FT-FTA	PCT	OFF	DEF	TOT	AVG	PF	A	TO	BLK	STL	PTS	AVG
South Carolina St.	11/09/2021		03:55	1-3	.333	0-0	.000	0-0	.000	0	2	2	2.0	0	0	2	0	0	2	2.0
Totals		0	03:55	1-3	.333	0-0	.000	0-0	.000	0	2	2	2.0	0	0	2	0	0	2	2.0

CAREER STATISTICS

		Field Goals		3-Point		F-Throws		Rebounds				Scoring								
SEASON	TEAM	GP-GS	MIN/AVG	FG-FGA	FG%	3FG-3FGA	3FG%	FT-FTA	FT%	OFF	DEF	TOT	AVG	PF-FO	A	TO	BLK	STL	PTS	AVG
2021-22	ODU	1-0	4/3.9	1-3	.333	0-0	.000	0-0	.000	0	2	2	2.0	0-0	0	2	0	0	2	2.0
TOTAL		1-0	4/3.9	1-3	.333	0-0	.000	0-0	.000	0	2	2	2.0	0-0	0	2	0	0	2	2.0

2021-22 OVERALL SEASON STATS

Game Records

Record	Overall	Home	Away	Neutral
ALL GAMES	1-0	1-0	0-0	0-0
CONFERENCE	0-0	0-0	0-0	0-0
NON-CONFERENCE	1-0	1-0	0-0	0-0

Score by Periods

Team	1st	2nd	3rd	4th	OT	TOT
Old Dominion	28	20	13	19	0	80
Opponents	15	10	16	11	0	52

Team Box Score

No.	Player	Total					3-Point		F-Throw		Rebounds				Other Stats							
		GP-GS	MIN	AVG	FG-FGA	FG%	3FG-3FGA	3FG%	FT-FTA	FT%	OFF	DEF	TOT	AVG	PF	DQ	A	TO	BLK	STL	PTS	AVG
2	ALLEN, Iggy	1-1	22:23	22.4	6-13	.462	2-2	1.000	1-2	.500	3	4	7	7.0	2	0	1	0	0	3	15	15.0
14	WAYNE, Ajah	1-1	26:39	26.6	4-13	.308	1-4	.250	6-6	1.000	4	3	7	7.0	1	0	1	1	1	2	15	15.0
11	CLARK, Kaye	1-1	22:10	22.2	4-8	.500	2-3	.667	1-2	.500	4	1	5	5.0	2	0	1	3	1	4	11	11.0
23	YOUNG, Amari	1-1	20:53	20.9	5-9	.556	0-0	.000	1-3	.333	3	3	6	6.0	2	0	0	2	0	2	11	11.0
1	ADAMS, Mariah	1-1	24:22	24.4	4-9	.444	0-2	.000	2-2	1.000	0	1	1	1.0	4	0	2	1	0	4	10	10.0
3	WASHINGTON, Taleah	1-0	13:27	13.4	1-5	.200	0-1	.000	4-5	.800	0	2	2	2.0	1	0	1	3	1	1	6	6.0
5	BARNES-WILLIAMS, Ashanti	1-0	13:42	13.7	1-4	.250	0-2	.000	3-5	.600	1	1	2	2.0	4	0	2	1	0	2	5	5.0
12	JACKSON, Brianna	1-0	05:32	5.5	1-2	.500	0-0	.000	0-0	.000	1	0	1	1.0	0	0	0	1	1	0	2	2.0
44	MORELAND, Amhyia	1-0	03:55	3.9	1-3	.333	0-0	.000	0-0	.000	0	2	2	2.0	0	0	0	2	0	0	2	2.0
4	HUDSON, Aziah	1-0	18:26	18.4	1-5	.200	0-4	.000	0-2	.000	0	0	0	0.0	1	0	1	1	0	1	2	2.0
24	SAMPLE, Eden	1-0	03:55	3.9	0-0	.000	0-0	.000	1-2	.500	0	0	0	0.0	0	0	0	0	0	0	1	1.0
35	ROUSE, Alex	1-0	03:55	3.9	0-0	.000	0-0	.000	0-0	.000	1	0	1	1.0	1	0	0	0	0	0	0	0.0
0	CAMPBELL, Joy	1-0	09:45	9.8	0-0	.000	0-0	.000	0-0	.000	0	0	0	0.0	0	0	0	0	0	0	0	0.0
25	NELSON, Kaylen	1-0	10:57	11.0	0-2	.000	0-0	.000	0-0	.000	2	3	5	5.0	1	0	0	0	0	0	0	0.0
Team											2	3	5									
Total		1	200		28-73	.384	5-18	.278	19-29	.655	21	23	44	44.0	19	0	9	15	4	19	80	80.0
Opponents		1	200		18-45	.400	5-15	.333	11-22	.500	9	26	35	35.0	22	0	7	35	6	5	52	52.0

Team Statistics

	ODU	OPP
Scoring	80	52
Points per game	80.0	52.0
Scoring margin	+28.0	-
Field goals-att	28-73	18-45
Field goal pct	.384	.400
3 point fg-att	5-18	5-15
3-point FG pct	.278	.333
3-pt FG made per game	5.0	5.0
Free throws-att	19-29	11-22
Free throw pct	.655	.500
F-Throws made per game	19.0	11.0
Rebounds	44	35
Rebounds per game	44.0	35.0
Rebounding margin	+9.0	-
Assists	9	7
Assists per game	9.0	7.0
Turnovers	15	35
Turnovers per game	15.0	35.0
Turnover margin	+20.0	-
Assist/turnover ratio	0.6	0.2
Steals	19	5
Steals per game	19.0	5.0
Blocks	4	6
Blocks per game	4.0	6.0
Winning streak	1	-
Home win streak	1	-
Attendance	1649	0
Home games-Avg/Game	1-1649	0-0
Neutral site-Avg/Game	-	0-0

Team Results

Date	Opponent	Score	Att.
11/09/2021	South Carolina St.	W 80-52	1649

Old Dominion Women's Basketball 2021-22 Game Notes

BOX SCORES

GAME ONE



Official Basketball Box Score - Final
South Carolina St. at Old Dominion
 11/09/21 Charlayne Arena, Norfolk, Va.
 2021-22 Women's Basketball

Game Time: 6:30 PM
 Game Duration: 1:58
 Attendance: 1,549

Officials: Tammy Holman, Priscilla Herring, Sarah Williams

South Carolina St. - 52

Record: 0-1

NO.	Name	Min	FG		3P	FT		Rebounds			Fouls		TP	AS	TO	ST	Blocks		+/-
			M-A	M-A	M-A	OR	DR	TOT	PF	FD	BS	BA							
24	Trinity Klock	F 36:43	7-15	1-2	4-7	3	8	11	4	6	19	1	6	1	5	0	-31		
2	Nadia Reese	G 16:30	1-4	0-0	0-0	0	4	4	2	2	2	1	4	0	0	1	-14		
3	Lovely Sonnier	G 21:22	1-5	0-3	0-2	1	4	5	3	3	2	0	3	0	0	0	-15		
15	Shania Wright	G 11:30	1-1	1-1	0-0	0	1	1	1	0	3	0	2	0	0	0	-8		
21	Victoria Jordan	G 17:18	1-2	0-0	2-3	0	1	1	3	2	4	1	2	1	0	0	-4		
34	Tiona Walls	17:35	1-3	0-1	2-4	1	2	3	1	2	4	1	1	1	0	0	-12		
20	Nicole Gwynn	30:32	5-11	3-6	2-4	0	2	2	3	3	15	0	11	1	0	1	-19		
5	Mekayla Lumpkin	22:24	0-2	0-2	0-0	0	0	0	2	0	0	2	1	1	0	1	-18		
4	Briauna Thompson	14:50	0-1	0-0	1-2	0	0	0	3	1	1	1	1	0	1	1	-12		
23	Aliciah Fields	11:16	1-1	0-0	0-0	1	0	1	0	0	2	0	2	0	0	0	-7		
Team						3	4	7			0		2						
Totals			18-45	5-15	11-22	9	26	35	22	19	52	7	35	5	6	4	28		

Shooting By Period		
1 st	FG%	6-15 40.0%
	3PT%	1-6 16.7%
	FT%	2-2 100%
2 nd	FG%	4-11 36.4%
	3PT%	1-5 20.0%
	FT%	1-2 50%
3 rd	FG%	5-12 41.7%
	3PT%	3-4 75.0%
	FT%	3-6 50%
4 th	FG%	3-7 42.9%
	3PT%	0-0 0.0%
	FT%	5-12 41.7%
GM	FG%	18-45 40.0%
	3PT%	5-15 33.3%
	FT%	11-22 50.0%

Technical Fouls: NONE

Dead Ball Rebounds: 6, 0

Old Dominion - 80

Record: 1-0

NO.	Name	Min	FG		3P	FT		Rebounds			Fouls		TP	AS	TO	ST	Blocks		+/-
			M-A	M-A	M-A	OR	DR	TOT	PF	FD	BS	BA							
23	Amari Young	F 20:53	5-9	0-0	1-3	3	3	6	2	3	11	0	2	2	0	2	16		
1	Mariah Adams	G 24:23	4-9	0-2	2-2	0	1	1	4	4	10	2	1	4	0	0	24		
2	Iggy Allen	G 22:23	6-13	2-2	1-2	3	4	7	2	2	15	1	0	3	0	1	19		
11	Kaye Clark	G 22:10	4-8	2-3	1-2	4	1	5	2	1	11	1	3	4	1	0	19		
14	Ajah Wayne	G 26:38	4-13	1-4	6-6	4	3	7	1	4	15	1	1	2	1	2	23		
3	Taleah Washington	13:26	1-5	0-1	4-5	0	2	2	1	3	6	1	3	1	1	0	7		
25	Kaylen Nelson	10:57	0-2	0-0	0-0	2	3	5	1	0	0	0	0	0	0	0	7		
0	Joy Campbell	09:45	0-0	0-0	0-0	0	0	0	0	0	0	0	0	0	0	0	4		
12	Brianna Jackson	05:32	1-2	0-0	0-0	1	0	1	0	1	2	0	1	0	1	1	2		
4	Aziah Hudson	18:26	1-5	0-4	0-2	0	0	0	1	1	2	1	1	1	0	0	18		
5	Ashanti Barnes-Williams	13:42	1-4	0-2	3-5	1	1	2	4	2	5	2	1	2	0	0	7		
24	Eden Sample	03:55	0-0	0-0	1-2	0	0	0	0	1	1	0	0	0	0	0	-2		
35	Alex Rouse	03:55	0-0	0-0	0-0	1	0	1	1	0	0	0	0	0	0	0	-2		
44	Amthya Moreland	03:55	1-3	0-0	0-0	0	2	2	0	0	2	0	2	0	0	0	-2		
Team						2	3	5			0		0						
Totals			28-73	5-18	19-29	21	23	44	19	22	80	9	15	19	4	6	28		

Shooting By Period		
1 st	FG%	11-17 64.7%
	3PT%	3-3 100.0%
	FT%	3-6 50%
2 nd	FG%	9-26 34.6%
	3PT%	2-8 25.0%
	FT%	0-0 0%
3 rd	FG%	3-16 18.8%
	3PT%	0-4 0.0%
	FT%	7-10 70%
4 th	FG%	5-14 35.7%
	3PT%	0-3 0.0%
	FT%	9-13 69.2%
GM	FG%	28-73 38.4%
	3PT%	5-18 27.8%
	FT%	19-29 65.5%

Technical Fouls: NONE

Dead Ball Rebounds: 8, 0

	SCSU		ODU		Points from Turnovers	SCSU		ODU		Period by Period Scoring				
	1st	2nd	3rd	4th		1st	2nd	3rd	4th	TOT				
Biggest lead	0 (1 st 10:00)	32 (4 th 4:12)			10	30								
Best Scoring Run	6 (3 rd 8:18)	14 (4 th 4:12)			22	34								
Lead Changes	0				8	19								
Times Tied	0				7	18								
Time with Lead	00:00	39:45			22	18								