



USC Upstate Women's Basketball 2020-21 Game Notes

Contact: Codie Kunstmann • Email: codiek@uscupstate.edu • Office: (864) 503-5152

Game Central

USC Upstate
Spartans
(2-2, 0-0 BSC)



VS

Old Dominion
Monarchs
(2-1, 0-0 C-USA)



Head Coach: Becky Burke
Record at Upstate: 2-2 (1st season)
Overall Record: 85-34 (5th season)

Head Coach: DeLisha Milton-Jones
Record at ODU: 2-1 (1st season)
Overall Record: 34-44 (3rd season)

Series History: ODU leads 1-0

Trend: +1 ODU

Last Meeting: Upstate lost 77-46 (11/13/12, Norfolk, Va.)

Opening Tip

- This is the second all-time meeting between the Spartans and Monarchs. The last time these two teams met, Old Dominion defeated USC Upstate 77-46 in Norfolk, Va. on Nov. 13, 2012.
- The Spartans are coming off a perfect weekend in which they picked up a pair of double-digit wins in their home debut in the form of a back-to-back against St. Andrews and Flagler.
- Upstate completely shut down Flagler in the second half of the game on Sunday, holding the Saints to 3-of-29 from the floor in the half to overcome them for a 52-42 win.
- Since making her debut against Alabama last week, freshman McKinley Brooks-Sumpter is averaging 16.0 points, 5.7 rebounds, and 2.7 steals per game.
- Denijsha Wilson was named Big South Conference Player of the Week by College Sports Madness this past Monday. She averaged 15.7 points in helping her team to a 2-1 record on the week.
- ODU is coming off an 81-76 OT win against VCU in which leading scorer Victoria Morris had a career-high 31 points.

Projected Starting Lineup (from SID)



G • 10 • McKinley Brooks-Sumpter
5-8 • Fr. • Columbia, S.C.

Pts.	Reb.	Stl.	Min.
16.0	5.7	2.7	27.7



G • 0 • Dakota McCaughan
5-5 • Fr. • Secane, Pa.

Pts.	Reb.	Ast.	Min.
7.5	2.3	2.5	27.0



G • 1 • Denijsha Wilson
5-3 • Jr. • Darby, Pa.

Pts.	Reb.	Ast.	Min.
6.0	2.5	3.5	34.0



F • 33 • Michaela Gibbons
5-11 • Sr. • Troutman, N.C.

Pts.	Reb.	Stl.	Min.
4.5	3.0	0.5	21.5



F • 34 • Molly Coleman
6-2 • Jr. • Clinton, South Australia

Pts.	Reb.	Ast.	Min.
6.8	2.5	1.0	16.8



Head Coach Becky Burke

- 1st season at USC Upstate (2-2)
- 5th season overall (85-34)

Game Information

Date: December 13, 2020 | 2:00 p.m. EST

Site: Chartway Arena | Norfolk, Va.

Live Stats: www.upstatespartans.com

Live Video: CUSA TV (Paid Subscription)

Twitter: @UpstateWBB

Hashtag: #SpartanArmy -> #JoinUP

Schedule/Results

NOVEMBER

25 at Auburn L, 82-41

DECEMBER

2 at Alabama L, 98-59

5 **ST. ANDREWS** **W, 86-40**

6 **FLAGLER** **W, 52-42**

13 at Old Dominion 2:00pm

17 at Winthrop * 6:00pm

18 at Winthrop * 6:00pm

30 **HIGH POINT *** **2:00pm**

31 **HIGH POINT *** **2:00pm**

JANUARY

4 at Longwood * TBA

5 at Longwood * TBA

9 **PRESBYTERIAN *** **4:00pm**

10 **PRESBYTERIAN *** **2:00pm**

15 at Hampton * 5:00pm

16 at Hampton * 3:00pm

22 at Gardner-Webb * TBA

23 at Gardner-Webb * TBA

29 **RADFORD *** **6:00pm**

30 **RADFORD *** **4:00pm**

FEBRUARY

5 at UNC Asheville * 5:00pm

6 at UNC Asheville * 4:00pm

19 **CAMPBELL *** **6:00pm**

20 **CAMPBELL *** **4:00pm**

26 **CHARLESTON SOU. *** **6:00pm**

27 **CHARLESTON SOU. *** **4:00pm**

MARCH

9-14 Big South Championship TBA

All Games are EST and subject to change.
Home games are in **bold**.

* - Big South Conference Game

Quick Facts

UNIVERSITY INFORMATION

School: USC Upstate
Location: Spartanburg, S.C.
Founded: 1967
Enrollment: 6,200
Nickname: Spartans
Colors: Green (349), White and Black
Home Facility (Capacity): G.B. Hodge Center (833)
Press Row Phone: (864) 503-5058
Affiliation: NCAA Division I
Conference: Big South
Interim Chancellor: J. Derham Cole, Jr.
Director of Athletics: Daniel Feig
Faculty Athletics Representative: Dr. Jim Griffis
Senior Woman Administrator: Sarah Gildersleeve
Athletic Department Phone: (864) 503-5141

WOMEN'S BASKETBALL HISTORY

First Year of Women's Basketball: 1974
Overall All-Time Record: 584-657
No. of Years in NCAA Tournament (Div. II): 4
Last Year in NCAA Tourney, (Div. II): 2005-06
Last NCAA Tourney Opponent: Wingate
Result: L, 67-59

TEAM INFORMATION

2020-21 Overall Record: 2-2
2020-21 BSC Record: 0-0
Starters Returning/Lost: 3/2
Letterwinners Returning/Lost: 8/7
Newcomers: 6

COACHING STAFF

Head Coach: Becky Burke
Alma Mater: University of Louisville, 2012
Record at School/Years: 2-2/1st season
Overall Record/Years: 85-34/5th season
Best Way To Reach Coach: Through SID
Assistant Coaches: Candyce Wheeler, Drew Landers, Nicole Ambrose
Athletic Trainer: Kayce Miller

ATHLETIC COMMUNICATIONS

Contact: Codie Kunstmann, Associate Director
Office: (864) 503-5152
Cell: (931) 551-5532
Fax: (864) 503-5127
Email: codiek@uscupstate.edu
Website: www.upstatespartans.com

SOCIAL MEDIA

Official Athletics Twitter: @UpstateSpartans
WBB Twitter: @UpstateWBB
Facebook: USC Upstate Athletics
Instagram: @UpstateWBB
YouTube: Upstate Spartans

WHAT TO CALL US

Please refer to the University of South Carolina Upstate as USC Upstate on first reference. Upstate is acceptable after first reference. Do not use hyphens.

The Old Dominion Series

This is the second all-time meeting between the Spartans and Monarchs. The last time these two teams met, Old Dominion defeated USC Upstate 77-46 in Norfolk, Va. on Nov. 13, 2012. Former Spartan standout Brittany Starling paced the team with 17 points in the game, going a perfect 7-for-7 from the floor and connecting on 2-of-4 free throws.

Scouting the Opponent

Victoria Morris is the leading scorer for the Monarchs through the first three games this season, averaging 17.7 points per game. Amari Young leads her team on the glass with 10 rebounds per game while also putting up 13.7 points per game. Ajah Wayne also averages double-digits with 12.3 points per game and nine rebounds per game.

ODU is coming off an 81-76 OT win against VCU. Morris had a career-high 31 points in the game.

Big South Preseason Poll

Rk - School (first-place votes)	Points
1 - Campbell (6)	112
2 - Radford (2)	107
3 - High Point (3)	104
4 - Hampton	86
5 - Gardner-Webb	70
6 - Longwood	66
7 - UNC Asheville	56
8 - Presbyterian College	48
9 - USC Upstate	30
10 - Charleston Southern	24
11 - Winthrop	23

Wilson Named BSC Player of the Week by College Sports Madness

College Sports Madness has named Denijsha Wilson as the Big South Player of the Week, the publication announced on Monday, Dec. 7. The honor comes after Wilson helped the Spartans to a 2-1 record on the week including a matchup at Alabama and wins over St. Andrews and Flagler.

Wilson put up double-digits against the Crimson Tide on Wednesday with 12

Tale of the Tape

Series History

Overall Series	ODU leads 1-0
Current Streak	+1 ODU
Home	N/A
Away	0-1
Neutral	N/A

Statistical Comparison

Category	Upstate	Old Dominion
Record	2-2	2-1
Scoring Average	59.5	62.7
Scoring Margin	-6.0	+3.3
Opponents Average	65.5	59.3
Field Goal Pct.	39.6	39.4
3-Point FG Pct.	28.2	25.1
Free Throw Pct.	58.1	61.3
Rebounding Avg.	35.8	40.0
Rebounding Margin	-7.8	+1.0
Assists/Game	13.0	11.3
Turnovers/Game	17.5	18.0
Turnover Margin	0.0	-1.0
Assist-to-Turnover Ratio	0.7	0.6
Steals/Game	8.3	10.0
Blocks/Game	.5	1.7

points while dishing out six assists and pulling down five rebounds. The Darby, Pa. native then made her debut at the Hodge in a perfect back-to-back weekend for the Spartans, starting with a season-high 19-point effort against St. Andrews on Saturday. On Sunday, Wilson hauled in seven rebounds and notched 16 points in a win over Flagler.

Old Friends

Despite a brand new coaching staff and six newcomers for the Spartans this year, this team has a lot of prior connections. Newcomers Dakota McCaughan and Denijsha Wilson played with each other on the same church league team back in elementary school. Furthermore, Coach Burke and Coach Wheeler were teammates on the 2009 Louisville Final Four team while Coach Ambrose was a student assistant for the Cards at the time. Lastly, Coach Burke originally recruited Molly McCutcheon at Charleston, to only be reunited here at Upstate.

It Runs in the Family

Assistant Coach Drew Landers is no stranger to DI women's basketball as he is the son of legendary University of Georgia women's basketball coach Andy Landers.

International Ties

The Spartans have three international players on the team this season. Gift Sampson is a native of Lagos, Nigeria, Anda Kuzmina is from Riga, Latvia, and Molly Coleman is from Clinton, South Australia.

Alumni Spotlight

Riley Popplewell was named the 2019-20 Big South Conference Woman of the Year based on the criteria of Service and Leadership (including community services, campus activities and leadership positions), Academic Achievement, Athletics Excellence and a Personal Statement from each candidate. With a degree in Elementary Education, Popplewell graduated with a 4.0 GPA as a four-year starter for the Spartans. She surpassed 1,000 career points and 700 career rebounds during her senior year of 2019-20, was the Big South's second-leading rebounder this past season with 8.6 rebounds per game and was third in free throw percentage at 79.5.

In her final game in green and black, Popplewell played a pivotal role in helping the Spartans advance in a conference tournament for the first time since 2016. She dropped 23 points and pulled down 17 rebounds against Winthrop in the First Round of the Hercules Tires Big South Women's Basketball Championship as Upstate became the first-ever 10-seed to advance to the Big South Tournament Quarterfinals.

This past spring she was a recipient of the Big South Conference's Christenberry Award for Academic Excellence, which is the highest academic honor a Big South student-athlete can achieve. Popplewell was also one of 10 national selections for the 2019-20 DI-AAA Athletic Directors Association Scholar-Athlete Team. The two-time CoSIDA Academic All-District Team member was named the 2019-20 USC Upstate Female Academic Athlete of the Year after earning the USC Upstate School of Education Outstanding Student-Teacher Award in the fall of 2019. Popplewell was also the 2017-18 ASUN Scholar-Athlete of the Year followed by the Big South Women's Basketball Scholar-Athlete of the Year in 2018-19.

Additionally, she participated in service projects throughout her collegiate career with United Way of the Piedmont Reading Buddies, McCarthy Teszler School Prom, Carolina Miracle League, Habitat for Humanity, and local nursing homes. She was also involved with Cru, National Walk to School Day, Girl/Boy Scouts, and community clean up days. Popplewell was the recipient of the 2018-19 USC Upstate SAAC Spartan Heart Award, and was honored with the 2020 USC Upstate Joe Bowman Pinnacle Award for Career Achievement.

The Last Time...

USC Upstate won back-to-back games...

vs St. Andrews (12/5/20), vs Flagler (12/6/20)

USC Upstate lost back-to-back games...

at Auburn (11/25/20), at Alabama (12/2/20)

USC Upstate played an overtime game...

vs Campbell, L, 80-72 (2OT)

USC Upstate won an overtime game...

at South Carolina State (12/12/16), W, 73-67

USC Upstate scored 100 points in a game...

vs Bob Jones (12/8/18), W, 101-53

USC Upstate allowed 100 points in a game...

at South Carolina (11/21/19), L, 112-32

USC Upstate scored 90 points in a game...

at NJIT (1/6/18), W, 95-57

USC Upstate allowed 90 points in a game...

at Alabama (12/2/20), L, 98-59

USC Upstate won at the Hodge Center...

vs Flagler (12/6/20), W, 52-42

USC Upstate lost at the Hodge Center...

vs Gardner-Webb (2/29/20), L, 70-59

USC Upstate won on the road...

at Winthrop (3/10/20), W, 60-57

USC Upstate lost on the road...

at Alabama (12/2/20), L, 98-59

USC Upstate won at a neutral site...

vs. Columbus State (PBT, 3/2/06), W, 69-62

USC Upstate lost at a neutral site...

vs. Stetson (ASUN, 3/15/14), L, 90-60

USC Upstate won by 20 or more points...

vs St. Andrews (12/5/20), W, 86-40

USC Upstate lost by 20 or more points...

at Alabama (12/2/20) L, 98-59

USC Upstate won by 30 or more points...

vs St. Andrews (12/5/20), W, 86-40

USC Upstate lost by 30 or more points...

at Alabama (12/2/20) L, 98-59

A USC Upstate player hit a buzzer-beating shot...

Shelby Hicks vs. Jacksonville (1/29/15), W, 66-64

A USC Upstate player had a double-double...

Marnicha Prudent at Auburn (11/25/20), L, 82-41

Five or More USC Upstate players scored 10 or more points...

Wilson, Brooks-Sumpter, Gibbons, Timberlake, Flantos

vs St. Andrews (12/5/20), W, 86-40

Four USC Upstate players scored 10 or more points...

Lewis (19), Moore (13), Logan (11), Popplewell (10), vs FAMU

(11/5/19), W, 74-61

Two USC Upstate players had 10 or more rebounds...

Popplewell (17), Gibbons (10) at Winthrop (3/10/20), W, 60-57

A USC Upstate player had 20 or more points...

McKinley Brooks-Sumpter (21) at Alabama (12/2/20)

A USC Upstate player had 30 or more points...

DeNisha Swain (33) at Winthrop (1/11/19)

A USC Upstate player had 10 or more rebounds...

Prudent (10) vs Flagler (12/6/20), W, 52-42

A USC Upstate player had 15 or more rebounds...

Popplewell (17) at Winthrop (3/10/20), W, 60-57

A USC Upstate player had 20 or more rebounds...

Brittany Starling (24) vs. Florida Gulf Coast (2/15/16)

A USC Upstate player had 10 or more assists...

Anda Kuzmina (10) vs Presbyterian (2/4/20)

A USC Upstate player had 10 or more free throws made...

Riley Popplewell (15) vs Longwood (1/11/20)

A USC Upstate player had 10 or more field goals made...

Brianna Lewis (10) vs Campbell (2/1/20)

A USC Upstate player had five or more 3-pointers...

Dakota McCaughan (5) at Auburn (11/25/20)

A USC Upstate player had five or more steals...

Michaela Gibbons (5), vs FAMU (11/5/19)

Popplewell is currently playing professionally in Spain.

What's in a Name?

USC Upstate is one of five NCAA Division I schools that use the Spartans nickname. Upstate shares the Spartan nickname with Michigan State, Norfolk State, UNC Greensboro and San Jose State.

About USC Upstate

The University of South Carolina Upstate is a regional comprehensive university offering more than 40 undergraduate and graduate programs in liberal arts and sciences, business administration, nursing, and education.

Located along the I-85 corridor in Spartanburg between Greenville and Charlotte, USC Upstate is ranked by U.S. News & World Report at #2 among Top Public Schools. It serves as a major talent producer for the region, with more than 6,000 students, approximately 1,300 new graduates a year, and nearly 30,000 alumni, many of whom live and work in the state.

The USC Upstate Spartans compete in 15 NCAA Division I sports as a member of the Big South Conference.

2020-21 Big South Standings (as of 12/11/20)

School	Big South		Overall	
	W-L	Pct.	W-L	Pct.
Campbell	0-0	.000	2-1	.667
High Point	0-0	.000	2-2	.500
USC UPSTATE	0-0	.000	2-2	.500
Charleston Southern	0-0	.000	1-2	.333
Winthrop	0-0	.000	1-2	.333
UNC Asheville	0-0	.000	1-3	.250
Hampton	0-0	.000	0-1	.000
Presbyterian	0-0	.000	0-1	.000
Radford	0-0	.000	0-2	.000
Gardner-Webb	0-0	.000	0-4	.000
Longwood	0-0	.000	0-4	.000

Spartans Home/on the Road

Category	Home	Away
Record	2-0	0-2
Points/Gm	69.0	50.0
Scoring Margin	+28.0	-40.0
Points Allowed/Gm	41.0	90.0
Field Goal%	44.4	34.5
3-Pt. Field Goal%	23.3	31.7
Free Throw %	56.3	64.3
Opp. Field Goal%	24.3	46.1
Opp. 3-Pt. FG%	26.7	34.5
Opp. Free Throw %	58.8	79.5
Rebounding Avg	41.5	30.0
Opp. Rebound Avg	39.0	48.0
Rebounding Margin	+2.5	-18.0
Assists/Gm	14.5	11.5
Turnovers/Gm	14.0	21.0
Turnover Margin	+9.5	-9.5
Asst./TO Ratio	1.0	0.5
Steals/Gm	10.5	6.0
Blocks/Gm	1.0	0.0

Career By The Numbers**CAREER DOUBLE-FIGURE SCORING GAMES**

Anda Kuzmina	19
Michaela Gibbons	18
Jada Logan	2
Barrett Herring	8
Dakota McCaughan	2
Marnicha Prudent	1
McKinley Brooks-Sumpter	3
Denijsha Wilson	3
Lillian Flantos	1
Maya Timberlake	1
Molly Coleman	1

CAREER 30-PLUS POINT SCORING GAMES**CAREER 20-PLUS POINT SCORING GAMES**

Michaela Gibbons	2
Anda Kuzmina	1
McKinley Brooks-Sumpter	1

CAREER DOUBLE-DOUBLES

Michaela Gibbons	2
Barrett Herring	1
Anda Kuzmina	1
Marnicha Prudent	1

CAREER DOUBLE-FIGURE REBOUNDING GAMES

Michaela Gibbons	3
Barrett Herring	2
Jada Logan	1
Marnicha Prudent	2

CAREER 4-PLUS ASSIST GAMES

Anda Kuzmina	6
Jada Logan	4
Maya Timberlake	1
Michaela Gibbons	1
Molly McCutcheon	1
Dakota McCaughan	1
Denijsha Wilson	1

CAREER THREE-PLUS 3-POINT FG MADE GAMES

Michaela Gibbons	14
Anda Kuzmina	10
Dakota McCaughan	1
Denijsha Wilson	

CAREER STARTS

Anda Kuzmina	54
Michaela Gibbons	51
Jada Logan	20
Barrett Herring	19
Marnicha Prudent	2
Molly McCutcheon	1
Denijsha Wilson	4
McKinley Brooks-Sumpter	3
Dakota McCaughan	3
Molly Coleman	2

All-Time at the Hodge Center			
Year	Win	Loss	Pct.
1973-74	--	--	--
1974-75	--	--	--
1975-76	0	7	.000
1976-77	3	4	.429
1977-78	6	2	.750
1978-79	9	0	1.000
1979-80	7	6	.538
1980-81	3	4	.429
1981-82	7	2	.778
1982-83	6	2	.750
1983-84	6	6	.500
1984-85	4	7	.364
1985-86	13	2	.867
1986-87	12	2	.857
1987-88	8	6	.571
1988-89	8	5	.615
1989-90	10	3	.769
1990-91	10	3	.769
1991-92	7	6	.538
1992-93	14	2	.875
1993-94	15	0	1.000
1994-95	13	2	.867
1995-96	9	5	.643
1996-97	5	9	.357
1997-98	9	4	.692
1998-99	4	9	.308
1999-00	4	10	.286
2000-01	3	9	.250
2001-02	5	8	.385
2002-03	9	4	.692
2003-04	4	9	.308
2004-05	10	3	.769
2005-06	8	5	.615
2006-07	7	6	.538
2007-08	3	8	.273
2008-09	9	4	.692
2009-10	11	3	.846
2010-11	11	2	.846
2011-12	6	7	.462
2012-13	7	7	.500
2013-14	9	4	.692
2014-15	10	4	.714
2015-16	13	3	.813
2016-17	6	9	.400
2017-18	9	7	.563
2018-19	5	7	.416
2019-20	7	8	.545
2020-21	2	0	1.000
TOTAL	330	224	.596

Game-By-Game Starting Lineups

Opponent	1	2	3	4	5
Auburn	Wilson	McCutcheon	Kuzmina	Gibbons	Prudent
Alabama	Brooks-Sumpter	Wilson	McCaughan	Gibbons	Prudent
St. Andrews	Brooks-Sumpter	Wilson	McCaughan	Gibbons	Coleman
Flagler	Brooks-Sumpter	Wilson	McCaughan	Gibbons	Coleman

2020-21 Miscellaneous

Double-Digit Scorers	Total (High)
Marnicha Prudent	1 (10 at Auburn, 11/25/20)
Dakota McCaughan	2 (15 at Auburn, 11/25/20)
McKinley Brooks-Sumpter	3 (21 at Alabama, 12/2/20)
Denijsha Wilson	3 (19 vs St. Andrews, 12/5/20)
Michaela Gibbons	1 (10 vs St. Andrews, 12/5/20)
Maya Timberlake	1 (11 vs St. Andrews, 12/5/20)
Lillian Flantos	1 (10 vs St. Andrews, 12/5/20)
Molly Coleman	1 (13 vs St. Andrews, 12/6/20)

20-Point Scorers	Game
McKinley Brooks-Sumpter	at Alabama, 12/2/20

30-Point Scorers	Game
------------------	------

Double-Digit Rebounders	Total (High)
Marnicha Prudent	2 (10 at Auburn, 11/25/20)

Double-Doubles	Game
Marnicha Prudent	at Auburn, 11/25/20

This Week in the Big South

Monday, December 7

High Point 87 at N.C. Central 65

Tuesday, December 8

Winthrop 59 at College of Charleston 89

Wednesday, December 9

Charleston Southern 56 at Davidson 85

UNC Asheville 48 at Florida 70

William & Mary at Radford (CANCELLED)

High Point 108 at North Carolina Wesleyan 71

Hampton 45 at Liberty 67

Thursday, December 10

Mercer at Presbyterian (CANCELLED)

Friday, December 11

Charlotte at Campbell, 2 p.m.

Saturday, December 12

Presbyterian at ETSU, 12 p.m.

Radford at Georgia (CANCELLED)

UNC Asheville at South Carolina State, 2 p.m.

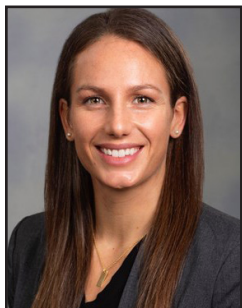
Sunday, December 13

USC Upstate at Old Dominion, 2 p.m.

Western Carolina at Charleston Southern 3 p.m.

Bench Production

GAME	UPST-OPP	DIF.	UPST HIGH
			BENCH SCORER
at Auburn	23-51	-28	McCaughan (15)
at Alabama	8-29	-21	Coleman (8)
St. Andrews	33-4	+29	Timberlake (11)
Flagler	11-10	+1	Prudent (7)



BECKY BURKE

Head Coach

1st Season

University of Louisville, 2012

Becky Burke is entering her first season at the helm of the USC Upstate Women's Basketball program. It was announced on June 8, 2020 that she was selected to lead the Spartan program, making her the 15th head coach in Upstate's program history, second in the Division I era.

"I felt like USC Upstate was a place where we could win before I even came on my campus visit, and after visiting, that was confirmed for me. It comes down to that simply. This is a place where we can recruit because of the campus support and resources, and I think the conference is winnable. At the end of the day you want to bring in a staff that plays to win championships, and I think everything is in place to do just that," said Burke.

"I'm looking forward to building relationships with the players and bringing fresh energy and life into the program. That's what you need when you're building, and I'm excited about watching them grow and seeing what they're going to do."

Burke takes the reins of the Upstate program after an impressive two-year stint at the NCAA DII level as the head coach at the University of Charleston in West Virginia. She brought the Golden Eagles back to national prominence in just her first season at the helm of the program in 2018-19, leading the team to a 25-7 record which was a 12-win improvement from the previous year. The Golden Eagles cracked the national top-25 that season and made their first NCAA Tournament since 2014 while leading the country in field goal percentage and the Mountain East Conference in defensive scoring. Burke coached a pair of First Team AllConference picks which included a DII All-American.

In her second year, the Golden Eagles entered the 2019-20 season as the conference's preseason No. 2 team and went on to a 23-7 record while once again leading the conference in defensive scoring behind another pair of All-Conference picks and the MEC Freshman of the Year.

Prior to her time at Charleston, Burke started the women's basketball program at Embry Riddle Aeronautical University in Prescott, Ariz. in 2015 and went on to be the head coach of the Eagles for two seasons. She led the team to a winning record in its inaugural season in 2016-17. In her second season at ERAU, the Eagles ranked nationally in the NAIA top-25 and compiled a 21-6 record, 11-3 in the California Pacific Conference. Burke recruited and coached three all-conference performers in two seasons at ERAU.

Burke earned a spot on the Women's Basketball Coaches Association 30-Under-30 list in 2019, and was the only head coach to appear on the exclusive list.

Before her head coaching career, Burke served as an assistant coach at Saint Joseph's College for the 2014-15 season where she was the recruiting coordinator and strength and conditioning coach while also being responsible for player development, scouting, and scheduling. Prior to that, she was the director of basketball

operations at California State University, Fullerton in 2013-14.

Burke had a standout playing career at the University of Louisville where she graduated with a degree in sports management in 2012. In four years as a Cardinal, she helped her team to three NCAA Tournament appearances including the championship game in 2009 and the Sweet Sixteen in 2011. She led the Cards in scoring her sophomore year and in 3-point field goal percentage her junior year. She tied a school record for 3-pointers in a game her senior year and ranks fourth all-time in 3-pointers made. Burke is a member of the 1,000-point club and became just the second Cardinal to participate in the State Farm College 3-Point Shoot-Out in 2012, finishing as the runner-up.

"I'm very grateful and humbled that AD Daniel Feig chose me to be the leader of this program and these young women," Burke said. "I want to thank him and the other administrators for giving me this opportunity."

A native of Clarks Summit, Pa., Burke starred at her hometown high school, Abington Heights. She was named the Pennsylvania Class 4A Player of the Year her senior year by the Associated Press and scored over 2,100 points in her four-year high school career.

Burke resides in Spartanburg with her fiancé, Jenna, and the couple will marry on May 22, 2021.

THE BURKE FILE

HOMETOWN: Clarks Summit, PA

FAMILY: Fiancé - Jenna

EDUCATIONAL BACKGROUND

2012 B.S. - Sports Management
University of Louisville

COLLEGIATE COACHING EXPERIENCE

2014-15 Assistant Coach - Saint Joseph's College
2015-18 Head Coach - Embry Riddle Aeronautical University
2018-20 Head Coach - University of Charleston (WV)
2020-Pres. Head Coach - USC Upstate

COACHING HONORS

2019 Women's Basketball Coaches Association 30-Under-30

PLAYING EXPERIENCE

2008-2012 Guard, Louisville

PLAYING HONORS

2009 NCAA Tournament Runner-up
2011 NCAA Tournament Sweet Sixteen
2012 State Farm College 3-Point Shootout Runner-up

AS A HEAD COACH

Year	Team	Record
2016-17	Embry Riddle (AZ)	14-12
2017-18	Embry Riddle (AZ)	21-6
2018-19	Charleston (WV)	25-7
2019-20	Charleston (WV)	23-7
2020-21	USC Upstate	2-2
Total	5 years	85-34

What They're Saying About Becky Burke:

Daniel Feig

*Director of Athletics/Vice Chancellor for Intercollegiate Athletics
USC Upstate*

"I am so excited to welcome Coach Burke to USC Upstate! She has been a winner at every stage of her career – as a student-athlete at Louisville, as a head coach in her mid-20s starting the program at Embry Riddle, and as a head coach most recently at the University of Charleston. From my first phone call with her, I felt her tremendous energy, contagious enthusiasm, personal charisma and commitment to excellence in all facets of running a collegiate basketball program. I have no doubt she will lead our program to new heights on the floor, while building relationships with our student-athletes to prepare them for a lifetime of success off the floor. I look forward to introducing her to our student-athletes, staff, University and community."

Jeff Walz

Head Women's Basketball Coach University of Louisville

"I'm very excited for Becky as she has done a tremendous job at every stop she's had along the way to this point of her career. This is just the next step for her. She's had success at every stop. She's very passionate and knowledgeable, and just does a fantastic job of getting the best out of her student-athletes. She coaches the same way she played which is with a lot of passion and heart and fire, and I think that is going to continue to lead her to great success."

Samantha Williams

Head Women's Basketball Coach Eastern Kentucky University

"Becky is a go-getter and I always knew she had a bright future and was going to be successful in the coaching profession. She was one of the most vocal kids that I've ever coached. She's just someone who brings the energy and has that charisma about her. There's a reason why she's moved up the ranks as quickly as she has. Her presence and her energy - you can feel that when you talk to her and I think it's contagious. I have no doubt that she's going to do great things at Upstate."

Bethann Ord

Head Women's Basketball Coach Binghamton University

"USC Upstate is getting a great young coach coming in. She's a fierce competitor - she was as a player and is as a coach. She's very knowledgeable about the game and I think she's going to do a tremendous job. I'm excited about watching her growth. She's in it for the kids, and that's really important and what it's about."



CANDYCE WHEELER

Assistant Coach

1st Season

University of Louisville, 2008

Wheeler, a former teammate of Burke's on the 2009 Final Four team at the University of Louisville, comes to Upstate from Bellarmine University where she served as the assistant women's basketball coach for the past four seasons.

In her first year with the Knights in 2016-17, Wheeler helped guide the team to an NCAA Tournament berth as well as its first back-to-back 20-win season in 12 years. Bellarmine made the Great Lakes Valley Conference Tournament in all of Wheeler's four seasons with the program, including an appearance in the title game in 2018-19. Additionally, Wheeler coached five All-GLVC selections.

Prior to her stint at Bellarmine, Wheeler was an assistant coach at her high school alma mater, DuPont Manual, and helped lead the team to a 7th Region Championship and an appearance in the state tournament. As an assistant coach at Western Kentucky University in 2013-14, she helped the Hilltoppers to a Sun Belt Conference Title and a berth in the NCAA Tournament. Before that, she returned to U of L as a graduate assistant under head coach Jeff Walz in 2012-13 and helped the Cardinals to the NCAA Tournament Finals for the second time in program history.

As a player at Louisville, Wheeler earned First Team All-Big East nods her senior year in 2008-09. She led the Cardinals to the program's first-ever NCAA Tournament championship game that season where she recorded a double-double against UConn and was named to the Raleigh Regional All-Tournament Team. Her junior year, she earned Second-Team All-Big East honors and was named to the Big East All-Tournament Team.

Wheeler earned her psychology degree from U of L and was selected in the third round of the 2009 WNBA draft by the San Antonio Silver Stars. She went on to play professionally overseas in Luxembourg, Germany, and Puerto Rico. Wheeler married her husband, Gary, in May 2019.



DREW LANDERS

Assistant Coach
1st Season
Ole Miss, 2013

Landers, the son of legendary Georgia's women's basketball coach Andy Landers, joins the Upstate program from Mercer University where he has been the director of player personnel for women's basketball since 2018.

There, he was in charge of team operations that included travel, lodging, and meals as well as scouting, planning summer camps, managing the team budget, and devising team practice schedules and itineraries. He also acted as the liaison for compliance.

Prior to Mercer, Landers was the director of women's basketball operations at the University of Mississippi in 2017-18. In addition to the same responsibilities he had at Mercer, Landers also recruited practice players and mentored support staff, student managers, and student-athletes during his time at Ole Miss. In 2016-17, he was the women's basketball video coordinator at the University of Virginia after interning with Georgia's men's and women's basketball programs in 2014-15 where he assisted with film, scouting reports, and playbooks.

Additionally, Landers has worked with the Southeastern Conference in the past, volunteering at football media days and men's and women's basketball tournaments. He received his bachelor's in business administration from Ole Miss in 2013.



NICOLE AMBROSE

Assistant Coach
1st Season
University of Louisville, 2012

Ambrose was a student manager for women's basketball at U of L during Coach Burke's time there, and she joins the Spartans after spending the last three seasons as an assistant coach at Indiana University Southeast.

During her tenure, she helped coach the Grenadiers to their first-ever River States Conference West Division Championship and an appearance in the River States Conference Tournament Championship. Ambrose compiled a 54-38 record at IU Southeast while coaching two All-RSC First Team selections and two All-RSC Second Team selections.

Before her time at IU Southeast, Ambrose was the head coach at Waggener High School in Louisville, KY during the 2016-17 school year. Prior to that, she spent three seasons as an assistant coach at Louisville Male High School and Assumption High School in Louisville, KY.

In addition to coaching scholastically, Ambrose directed the Louisville Legends Gauntlet travel program from 2016-2018 and sent more than 15 players to the collegiate ranks. In 2017, she founded The Outlet, LLC, a girls basketball exposure company that highlights players from Kentucky and surrounding states. In May 2019, Ambrose and The Outlet partnered with WNBA and University of Louisville stars Angel McCoughtry and Asia Durr to hold the Derby City Duo Skills Camp.

Ambrose was a student-manager and then a graduate assistant for U of L's women's basketball team, and during her time there, the Cardinals made two NCAA Sweet 16 appearances and one NCAA National Championship appearance. She graduated from U of L in 2012 with a bachelor's in sport administration and again in 2014 with a master's of business administration in entrepreneurship. In 2019, she graduated with her master's degree in teaching from the University of the Cumberlands.

USC Upstate By The Numbers

	Big South	Overall		Big South	Overall
Record	0-0	2-2	Having 10 or more assists	0-0	2-2
Playing a ranked opponent	0-0	0-0	Having less than 10 assists	0-0	0-0
Home	0-0	2-0	Score more points in paint than opponent	0-0	2-0
Road	0-0	0-2	Score equal/less pts. in paint than opp.	0-0	0-2
Neutral	0-0	0-0	Scoring more pts. off TOs than opponent	0-0	1-0
Leading at halftime	0-0	1-0	Scoring equal/less pts. off TOs than opp.	0-0	1-2
Trailing at halftime	0-0	1-2	Scoring more 2nd-chance points	0-0	1-0
Tied at halftime	0-0	0-0	Scoring equal/less 2nd-chance points	0-0	1-2
Overtime	0-0	0-0	Scoring more fast break points	0-0	2-0
0 players score in double figures	0-0	0-0	Scoring equal/less fast break points	0-0	0-2
1 player scores in double figures	0-0	0-0	Wearing white uniforms	0-0	2-0
2 players score in double figures	0-0	0-1	Wearing black uniforms	0-0	0-2
3 players score in double figures	0-0	1-1	Wearing green uniforms	0-0	0-0
4 players score in double figures	0-0	0-0	Playing in November	0-0	0-1
5 players score in double figures	0-0	1-0	Playing in December	0-0	2-1
More than 5 players score in double figures	0-0	0-0	Playing in January	0-0	0-0
Starters out-score opponent's starters	0-0	2-0	Playing in February	0-0	0-0
Opponent's starters score equal/more	0-0	0-2	Playing in March	0-0	0-0
Bench out-scores opponent's bench	0-0	2-0	Playing during the day	0-0	2-0
Opponent's bench scores equal/more	0-0	0-2	Playing at night	0-0	0-2
Shooting 50% or better	0-0	1-0	Playing on Sunday	0-0	1-0
Shooting between 40-49%	0-0	0-0	Playing on Monday	0-0	0-0
Shooting between 30-39%	0-0	1-1	Playing on Tuesday	0-0	0-0
Shooting less than 30%	0-0	0-1	Playing on Wednesday	0-0	0-2
Shooting better than opponent	0-0	2-0	Playing on Thursday	0-0	0-0
Shooting worse than/equal to opponent	0-0	0-2	Playing on Friday	0-0	0-0
More made FTs than opponent	0-0	2-0	Playing on Saturday	0-0	1-0
Having equal/less FTs than opponent	0-0	0-2	Margin is 5 points or less	0-0	0-0
Out-rebounding opponent	0-0	1-0	Margin is between 6-10	0-0	1-0
Having equal/less rebounds than opponent	0-0	1-2	Margin is between 11-20	0-0	0-0
Having more TOs than opponent	0-0	0-2	Margin is more than 20	0-0	1-2
Having equal/less TOs than opponent	0-0	2-0	Having a 20-point scorer	0-0	0-1
Attempting more FT than 3FG	0-0	2-0	Having a 30-point scorer	0-0	0-0
Attempting equal/less FT than 3FG	0-0	0-2	Scoring 49 points or less	0-0	0-1
Making 5 or more 3FGs	0-0	0-2	Scoring 50-59 points	0-0	1-1
Making less than 5 3FGs	0-0	2-0	Scoring 60-69 points	0-0	0-0
Making no 3FGs	0-0	0-0	Scoring 70-79 points	0-0	0-0
Attempting 15 or more 3FGs	0-0	1-2	Scoring 80-89 points	0-0	1-0
Attempting less than 15 3FGs	0-0	1-0	Scoring 90-99 points	0-0	0-0
No Upstate players foul out	0-0	2-0	Scoring 100+ points	0-0	0-0
One or more Upstate players foul out	0-0	0-2			

2020-21 Season Statistics



2020-21 USC Upstate Women's Basketball
 Combined Team Statistics
 All games

Game Records

Record	Overall	Home	Away	Neutral
ALL GAMES	2-2	2-0	0-2	0-0
CONFERENCE	0-0	0-0	0-0	0-0
NON-CONFERENCE	2-2	2-0	0-2	0-0

Score by Periods

Team	1st	2nd	3rd	4th	OT	TOT
USC Upstate	57	50	83	48	0	238
Opponents	57	83	61	61	0	262

Team Box Score

No.	Player	Total					3-Point		F-Throw		Rebounds				Other							
		GP-GS	MIN	AVG	FG-FGA	FG%	3FG-FGA	3FG%	FT-FTA	FT%	OFF	DEF	TOT	AVG	PF	DQ	A	TO	BLK	STL	PTS	AVG
10	BROOKS-SUMPTER, McKinley	3-3	83:56	28.0	20-42	.476	2-3	.667	6-10	.600	4	13	17	5.7	9	0	6	9	0	8	48	16.0
1	WILSON, Denijsha	4-4	129:32	32.4	15-36	.417	4-11	.364	13-17	.765	4	14	18	4.5	5	0	10	14	0	4	47	11.8
0	MCCAUGHAN, Dakota	4-3	109:44	27.4	11-34	.324	8-29	.276	0-0	.000	0	9	9	2.3	9	0	10	11	1	2	30	7.5
34	COLEMAN, Molly	4-2	66:31	16.6	11-18	.611	0-0	.000	5-13	.385	2	8	10	2.5	3	0	3	5	0	1	27	6.8
5	MCCUTCHEON, Molly	1-1	33:03	33.1	2-7	.286	2-6	.333	0-0	.000	0	0	0	0.0	2	0	5	2	0	1	6	6.0
21	PRUDENT, Marnicha	4-2	77:55	19.5	6-22	.273	0-0	.000	10-16	.625	4	22	26	6.5	12	2	5	5	0	3	22	5.5
33	GIBBONS, Michaela	4-4	86:24	21.6	7-30	.233	4-17	.235	0-0	.000	0	12	12	3.0	8	0	2	8	1	2	18	4.5
25	TIMBERLAKE, Maya	3-0	65:32	21.8	6-13	.462	0-0	.000	1-2	.500	2	6	8	2.7	7	0	5	5	0	2	13	4.3
23	FLANTOS, Lillian	4-0	90:56	22.7	8-14	.571	0-0	.000	0-2	.000	5	9	14	3.5	10	0	0	6	0	7	16	4.0
15	KUZMINA, Anda	3-1	41:49	13.9	3-9	.333	0-5	.000	0-0	.000	0	4	4	1.3	4	0	6	2	0	3	6	2.0
3	SAMPSON, Gift	3-0	14:38	4.9	2-5	.400	0-0	.000	1-2	.500	2	3	5	1.7	0	0	0	3	0	0	5	1.7
Team											4	16	20									
Total		4	800		91-230	.396	20-71	.282	36-62	.581	27	116	143	35.8	69	2	52	70	2	33	238	59.5
Opponents		4	800		90-244	.369	31-100	.310	51-73	.699	49	125	174	43.5	59	1	64	70	7	33	262	65.5

Team Statistics

	USCU	OPP
Scoring	238	262
Points per game	59.5	65.5
Scoring margin	-6.0	-
Field goals-att	91-230	90-244
Field goal pct	.396	.369
3 point fg-att	20-71	31-100
3-point FG pct	.282	.310
3-pt FG made per game	5.0	7.8
Free throws-att	36-62	51-73
Free throw pct	.581	.699
F-Throws made per game	9.0	12.8
Rebounds	143	174
Rebounds per game	35.8	43.5
Rebounding margin	-7.8	-
Assists	52	64
Assists per game	13.0	16.0
Turnovers	70	70
Turnovers per game	17.5	17.5
Turnover margin	0.0	-
Assist/turnover ratio	0.7	0.9
Steals	33	33
Steals per game	8.3	8.3
Blocks	2	7
Blocks per game	0.5	1.8
Winning streak	2	-
Home win streak	2	-
Attendance	263	1048
Home games-Avg/Game	2-132	2-524
Neutral site-Avg/Game	-	0-0

Team Results

Date	Opponent		Score	Att.
11/25/2020	at Auburn	L	41-82	588
12/02/2020	at Alabama	L	59-98	460
12/05/2020	St. Andrews	W	86-40	135
12/06/2020	Flagler	W	52-42	128

2020-21 Season Results



2020-21 USC Upstate Women's Basketball
Season Schedule/Results & Leaders
All games

Page 1/1
as of Dec 09, 2020

Game Records

Record	Overall	Home	Away	Neutral
ALL GAMES	2-2	2-0	0-2	0-0
CONFERENCE	0-0	0-0	0-0	0-0
NON-CONFERENCE	2-2	2-0	0-2	0-0

Team Results

Date	Opponent	Score	Att.	High Points	High Rebounds
11/25/2020	at Auburn L	41-82	588	(15) MCCAUGHAN, Dakota	(10) PRUDENT, Marnicha
12/02/2020	at Alabama L	59-98	460	(21) BROOKS-SUMPTER, McKinley	(8) BROOKS-SUMPTER, McKinley
12/05/2020	St. Andrews W	86-40	135	(19) WILSON, Denijsha	(7) FLANTOS, Lillian
12/06/2020	Flagler W	52-42	128	(16) WILSON, Denijsha	(10) PRUDENT, Marnicha

Attendance Summary

	Games	Attend	Avg/Game
Home	2	263	132
Away	2	1048	524
Neutral	0	0	0
Total	4	1311	328

2020-21 Season Box Score



2020-21 USC Upstate Women's Basketball
Season Box Score
All games

Page 1/1
as of Dec 09, 2020

Game Records

Record	Overall	Home	Away	Neutral
ALL GAMES	2-2	2-0	0-2	0-0
CONFERENCE	0-0	0-0	0-0	0-0
NON-CONFERENCE	2-2	2-0	0-2	0-0

Team Box Score

No.	Player	Total					3-Point		F-Throw		Rebounds											
		GP-GS	MIN	AVG	FG-FGA	FG%	3FG-FGA	3FG%	FT-FTA	FT%	OFF	DEF	TOT	AVG	PF	DQ	A	TO	BLK	STL	PTS	AVG
10	BROOKS-SUMPTER, McKinley	3-3	83:56	28.0	20-42	.476	2-3	.667	6-10	.600	4	13	17	5.7	9	0	6	9	0	8	48	16.0
1	WILSON, Denijsha	4-4	129:32	32.4	15-36	.417	4-11	.364	13-17	.765	4	14	18	4.5	5	0	10	14	0	4	47	11.8
0	MCCAUGHAN, Dakota	4-3	109:44	27.4	11-34	.324	8-29	.276	0-0	.000	0	9	9	2.3	9	0	10	11	1	2	30	7.5
34	COLEMAN, Molly	4-2	66:31	16.6	11-18	.611	0-0	.000	5-13	.385	2	8	10	2.5	3	0	3	5	0	1	27	6.8
5	MCCUTCHEON, Molly	1-1	33:03	33.1	2-7	.286	2-6	.333	0-0	.000	0	0	0	0.0	2	0	5	2	0	1	6	6.0
21	PRUDENT, Marnicha	4-2	77:55	19.5	6-22	.273	0-0	.000	10-16	.625	4	22	26	6.5	12	2	5	5	0	3	22	5.5
33	GIBBONS, Michaela	4-4	86:24	21.6	7-30	.233	4-17	.235	0-0	.000	0	12	12	3.0	8	0	2	8	1	2	18	4.5
25	TIMBERLAKE, Maya	3-0	65:32	21.8	6-13	.462	0-0	.000	1-2	.500	2	6	8	2.7	7	0	5	5	0	2	13	4.3
23	FLANTOS, Lillian	4-0	90:56	22.7	8-14	.571	0-0	.000	0-2	.000	5	9	14	3.5	10	0	0	6	0	7	16	4.0
15	KUZMINA, Anda	3-1	41:49	13.9	3-9	.333	0-5	.000	0-0	.000	0	4	4	1.3	4	0	6	2	0	3	6	2.0
3	SAMPSON, Gift	3-0	14:38	4.9	2-5	.400	0-0	.000	1-2	.500	2	3	5	1.7	0	0	0	3	0	0	5	1.7
Team											4	16	20									
Total		4	800		91-230	.396	20-71	.282	36-62	.581	27	116	143	35.8	69	2	52	70	2	33	238	59.5
Opponents		4	800		90-244	.369	31-100	.310	51-73	.699	49	125	174	43.5	59	1	64	70	7	33	262	65.5

Score by Periods

Team	1st	2nd	3rd	4th	OT	TOT
USC Upstate	57	50	83	48	0	238
Opponents	57	83	61	61	0	262

2020-21 Category Leaders



2020-21 USC Upstate Women's Basketball
Category Leaders
All games

Page 1/3
as of Dec 09, 2020

Points

##	Player	G	Pts	Pts/G
10	Brooks-Sumpter, McKinley	3	48	16.0
1	Wilson, Denijsha	4	47	11.8
0	McCaughan, Dakota	4	30	7.5
34	Coleman, Molly	4	27	6.8
21	Prudent, Marnicha	4	22	5.5
33	Gibbons, Michaela	4	18	4.5
23	Flantos , Lillian	4	16	4.0
25	Timberlake , Maya	3	13	4.3
5	McCutcheon, Molly	1	6	6.0
15	Kuzmina, Anda	3	6	2.0
3	Sampson, Gift	3	5	1.7

Field Goal Percentage

##	Player	FG	Att	Pct
34	Coleman, Molly	11	18	.611
23	Flantos , Lillian	8	14	.571
10	Brooks-Sumpter, McKinley	20	42	.476
25	Timberlake , Maya	6	13	.462
1	Wilson, Denijsha	15	36	.417
3	Sampson, Gift	2	5	.400
15	Kuzmina, Anda	3	9	.333
0	McCaughan, Dakota	11	34	.324
5	McCutcheon, Molly	2	7	.286
21	Prudent, Marnicha	6	22	.273
33	Gibbons, Michaela	7	30	.233

3-Point FG Percentage

##	Player	3FG	Att	Pct
10	Brooks-Sumpter, McKinley	2	3	.667
1	Wilson, Denijsha	4	11	.364
5	McCutcheon, Molly	2	6	.333
0	McCaughan, Dakota	8	29	.276
33	Gibbons, Michaela	4	17	.235

Scoring Average

##	Player	G	Pts	Pts/G
10	Brooks-Sumpter, McKinley	3	48	16.0
1	Wilson, Denijsha	4	47	11.8
0	McCaughan, Dakota	4	30	7.5
34	Coleman, Molly	4	27	6.8
5	McCutcheon, Molly	1	6	6.0
21	Prudent, Marnicha	4	22	5.5
33	Gibbons, Michaela	4	18	4.5
25	Timberlake , Maya	3	13	4.3
23	Flantos , Lillian	4	16	4.0
15	Kuzmina, Anda	3	6	2.0
3	Sampson, Gift	3	5	1.7

Field Goal Attempts

##	Player	G	Att	Att/G
10	Brooks-Sumpter, McKinley	3	42	14.0
1	Wilson, Denijsha	4	36	9.0
0	McCaughan, Dakota	4	34	8.5
33	Gibbons, Michaela	4	30	7.5
21	Prudent, Marnicha	4	22	5.5

Field Goals Made

##	Player	G	Made	Made/G
10	Brooks-Sumpter, McKinley	3	20	6.7
1	Wilson, Denijsha	4	15	3.8
0	McCaughan, Dakota	4	11	2.8
34	Coleman, Molly	4	11	2.8
23	Flantos , Lillian	4	8	2.0

3-Point FG Attempts

##	Player	G	Att	Att/G
0	McCaughan, Dakota	4	29	7.3
33	Gibbons, Michaela	4	17	4.3
1	Wilson, Denijsha	4	11	2.8
5	McCutcheon, Molly	1	6	6.0
15	Kuzmina, Anda	3	5	1.7

3-Point FG Made

##	Player	G	Made	Made/G
0	McCaughan, Dakota	4	8	2.0
1	Wilson, Denijsha	4	4	1.0
33	Gibbons, Michaela	4	4	1.0
10	Brooks-Sumpter, McKinley	3	2	0.7
5	McCutcheon, Molly	1	2	2.0

2020-21 Category Leaders



2020-21 USC Upstate Women's Basketball
Category Leaders
All games

Page 2/3
as of Dec 09, 2020

Free Throw Percentage

##	Player	Made	Att	Pct
1	Wilson, Denijsha	13	17	.765
21	Prudent, Marnicha	10	16	.625
10	Brooks-Sumpter, McKinley	6	10	.600
25	Timberlake, Maya	1	2	.500
3	Sampson, Gift	1	2	.500
34	Coleman, Molly	5	13	.385

Free Throw Attempts

##	Player	G	Att	Att/G
1	Wilson, Denijsha	4	17	4.3
21	Prudent, Marnicha	4	16	4.0
34	Coleman, Molly	4	13	3.3
10	Brooks-Sumpter, McKinley	3	10	3.3
25	Timberlake, Maya	3	2	0.7

Free Throws Made

##	Player	G	Made	Made/G
1	Wilson, Denijsha	4	13	3.3
21	Prudent, Marnicha	4	10	2.5
10	Brooks-Sumpter, McKinley	3	6	2.0
34	Coleman, Molly	4	5	1.3
25	Timberlake, Maya	3	1	0.3

Rebounds

##	Player	G	Reb	Reb/G
21	Prudent, Marnicha	4	26	6.5
1	Wilson, Denijsha	4	18	4.5
10	Brooks-Sumpter, McKinley	3	17	5.7
23	Flantos, Lillian	4	14	3.5
33	Gibbons, Michaela	4	12	3.0

Assists

##	Player	G	Ast	Ast/G
1	Wilson, Denijsha	4	10	2.5
0	McCaughan, Dakota	4	10	2.5
10	Brooks-Sumpter, McKinley	3	6	2.0
15	Kuzmina, Anda	3	6	2.0
5	McCutcheon, Molly	1	5	5.0

Rebounds Average

##	Player	G	Reb	Reb/G
21	Prudent, Marnicha	4	26	6.5
10	Brooks-Sumpter, McKinley	3	17	5.7
1	Wilson, Denijsha	4	18	4.5
23	Flantos, Lillian	4	14	3.5
33	Gibbons, Michaela	4	12	3.0

Steals

##	Player	G	Stl	Stl/G
10	Brooks-Sumpter, McKinley	3	8	2.7
23	Flantos, Lillian	4	7	1.8
1	Wilson, Denijsha	4	4	1.0
21	Prudent, Marnicha	4	3	0.8
15	Kuzmina, Anda	3	3	1.0

Offensive Rebounds

##	Player	G	OReb	OReb/G
23	Flantos, Lillian	4	5	1.3
10	Brooks-Sumpter, McKinley	3	4	1.3
1	Wilson, Denijsha	4	4	1.0
21	Prudent, Marnicha	4	4	1.0
34	Coleman, Molly	4	2	0.5

Blocked Shots

##	Player	G	Blk	Blk/G
0	McCaughan, Dakota	4	1	0.3
33	Gibbons, Michaela	4	1	0.3

Defensive Rebounds

##	Player	G	DReb	DReb/G
21	Prudent, Marnicha	4	22	5.5
1	Wilson, Denijsha	4	14	3.5
10	Brooks-Sumpter, McKinley	3	13	4.3
33	Gibbons, Michaela	4	12	3.0
0	McCaughan, Dakota	4	9	2.3

Minutes

##	Player	G	Min	Min/G
1	Wilson, Denijsha	4	130	32:23
0	McCaughan, Dakota	4	110	27:26
23	Flantos, Lillian	4	91	22:44
33	Gibbons, Michaela	4	86	21:36
10	Brooks-Sumpter, McKinley	3	84	27:59

2020-21 Category Leaders



2020-21 USC Upstate Women's Basketball
Category Leaders
All games

Page 3/3
as of Dec 09, 2020

Fouls

##	Player	G	PF	PF/G
21	Prudent, Marnicha	4	12	3.0
23	Flantos , Lillian	4	10	2.5
10	Brooks-Sumpter, McKinley	3	9	3.0
0	McCaughan, Dakota	4	9	2.3
33	Gibbons, Michaela	4	8	2.0

Turnovers

##	Player	G	TO	TO/G
1	Wilson, Denijsha	4	14	3.5
0	McCaughan, Dakota	4	11	2.8
10	Brooks-Sumpter, McKinley	3	9	3.0
33	Gibbons, Michaela	4	8	2.0
23	Flantos , Lillian	4	6	1.5

Foul Outs

##	Player	G	FO
21	Prudent, Marnicha	4	2



DAKOTA MCCAUGHAN

Freshman • 5-5 • Guard

Secane, Pa.

(Ridley High School)

0

Game-By-Game

#0 MCCAUGHAN, Dakota

Opponent	Date	GS	MIN	Total		3-Pointers		Free throws		Rebounds				PF	A	T/O	BLK	STL	PTS	AVG
				FG-FGA	PCT	3FG-3FGA	PCT	FT-FTA	PCT	OFF	DEF	TOT	AVG							
at Auburn	11/25/2020		30:24	5-11	.455	5-11	.455	0-0	.000	0	0	0	0.0	2	5	6	0	1	15	15.0
at Alabama	12/02/2020	*	33:58	4-10	.400	2-7	.286	0-0	.000	0	2	2	1.0	2	2	2	0	0	10	12.5
St. Andrews	12/05/2020	*	17:34	2-6	.333	1-5	.200	0-0	.000	0	1	1	1.0	3	2	1	0	1	5	10.0
Flagler	12/06/2020	*	27:48	0-7	.000	0-6	.000	0-0	.000	0	6	6	2.3	2	1	2	1	0	0	7.5
Totals		3	109:44	11-34	.324	8-29	.276	0-0	.000	0	9	9	2.3	9	10	11	1	2	30	7.5

Player Averages

Games Played	Minutes/game	Points/game	FG Pct	3FG Pct	FT Pct	Rebounds/game	Assists/game	Turnovers/game	Assist/Turnover ratio	Steals/game	Blocks/game
4	27.4	7.5	32.4	27.6	0.0	2.3	2.5	2.8	0.9	0.5	0.3

CAREER HIGHS

Points	15, at Auburn, 11/25/20
Rebounds	6, vs Flagler, 12/6/20
Assists	5, at Auburn, 11/25/20
Blocks	1, vs Flagler, 12/6/20
Steals	1, at Auburn, 11/25/20
FGM	5, at Auburn, 11/25/20
FGA	11, at Auburn, 11/25/20
3FGM	5, at Auburn, 11/25/20
3FGA	11, at Auburn, 11/25/20
FTM	N/A
FTA	N/A
Minutes	34, at Alabama, 12/2/20

SEASON HIGHS

Points	15, at Auburn, 11/25/20
Rebounds	6, vs Flagler, 12/6/20
Assists	5, at Auburn, 11/25/20
Blocks	1, vs Flagler, 12/6/20
Steals	1, at Auburn, 11/25/20
FGM	5, at Auburn, 11/25/20
FGA	11, at Auburn, 11/25/20
3FGM	5, at Auburn, 11/25/20
3FGA	11, at Auburn, 11/25/20
FTM	N/A
FTA	N/A
Minutes	34, at Alabama, 12/2/20

Career Statistics

		Field Goals		3-Point		F-Throws		Rebounds				Scoring									
SEASON	TEAM	GP-GS	MIN/AVG	FG-FGA	FG%	3FG-FGA	3FG%	FT-FTA	FT%	OFF	DEF	TOT	AVG	PF	FO	AST	TO	BLK	STL	PTS	AVG
2020-21	USCU	4-3	110/27.4	11-34	.324	8-29	.276	0-0	.000	0	9	9	2.3	9-0	10	11	1	2	30	7.5	
TOTAL		4-3	110/27.4	11-34	.324	8-29	.276	0-0	.000	0	9	9	2.3	9-0	10	11	1	2	30	7.5	



DENIJSHA WILSON

Junior • 5-3 • Guard

Darby, Pa.

(Labette Community College)

1

Game-By-Game

#1 WILSON, Denijsha

Opponent	Date	GS	MIN	Total		3-Pointers		Free throws		Rebounds				PF	A	T/O	BLK	STL	PTS	AVG
				FG-FGA	PCT	3FG-3FGA	PCT	FT-FTA	PCT	OFF	DEF	TOT	AVG							
at Auburn	11/25/2020	*	31:52	0-7	.000	0-2	.000	0-0	.000	0	0	0	0.0	2	1	5	0	1	0	0.0
at Alabama	12/02/2020	*	36:47	6-12	.500	0-1	.000	0-0	.000	2	3	5	2.5	1	6	5	0	1	12	6.0
St. Andrews	12/05/2020	*	28:10	5-9	.556	1-4	.250	8-11	.727	2	4	6	3.7	1	2	2	0	2	19	10.3
Flagler	12/06/2020	*	32:43	4-8	.500	3-4	.750	5-6	.833	0	7	7	4.5	1	1	2	0	0	16	11.8
Totals			4 129:32	15-36	.417	4-11	.364	13-17	.765	4	14	18	4.5	5	10	14	0	4	47	11.8

Player Averages

Games Played	Minutes/game	Points/game	FG Pct	3FG Pct	FT Pct	Rebounds/game	Assists/game	Turnovers/game	Assist/Turnover ratio	Steals/game	Blocks/game
4	32.4	11.8	41.7	36.4	76.5	4.5	2.5	3.5	0.7	1.0	0.0

CAREER HIGHS

Points	19, vs St. Andrews, 12/5/20
Rebounds	7, vs Flagler, 12/6/20
Assists	6, at Alabama, 12/2/20
Blocks	N/A
Steals	2, vs St. Andrews, 12/5/20
FGM	6, at Alabama, 12/2/20
FGA	12, at Alabama, 12/2/20
3FGM	3, vs Flagler, 12/6/20
3FGA	4, twice
FTM	8, vs St. Andrews, 12/5/20
FTA	11, vs St. Andrews, 12/5/20
Minutes	36, at Alabama, 12/2/20

SEASON HIGHS

Points	19, vs St. Andrews, 12/5/20
Rebounds	7, vs Flagler, 12/6/20
Assists	6, at Alabama, 12/2/20
Blocks	N/A
Steals	2, vs St. Andrews, 12/5/20
FGM	6, at Alabama, 12/2/20
FGA	12, at Alabama, 12/2/20
3FGM	3, vs Flagler, 12/6/20
3FGA	4, twice
FTM	8, vs St. Andrews, 12/5/20
FTA	11, vs St. Andrews, 12/5/20
Minutes	36, at Alabama, 12/2/20

Career Statistics

SEASON	TEAM	GP-GS	MIN/AVG	Field Goals		3-Point		F-Throws		Rebounds				Scoring						
				FG-FGA	FG%	3FG-FGA	3FG%	FT-FTA	FT%	OFF	DEF	TOT	AVG	PF	FO	AST	TO	BLK	STL	PTS
2020-21	USCU	4-4	130/32.4	15-36	.417	4-11	.364	13-17	.765	4	14	18	4.5	5-0	10	14	0	4	47	11.8
TOTAL		4-4	130/32.4	15-36	.417	4-11	.364	13-17	.765	4	14	18	4.5	5-0	10	14	0	4	47	11.8



GIFT SAMPSON

Junior • 6-0 • Forward

Lagos, Nigeria

(Labette Community College)

3

Game-By-Game

#3 SAMPSON, Gift

Opponent	Date	GS	MIN	Total		3-Pointers		Free throws		Rebounds				PF	A	T/O	BLK	STL	PTS	AVG
				FG-FGA	PCT	3FG-3FGA	PCT	FT-FTA	PCT	OFF	DEF	TOT	AVG							
at Auburn	11/25/2020		02:13	1-2	.500	0-0	.000	0-0	.000	0	1	1	1.0	0	0	1	0	0	2	2.0
St. Andrews	12/05/2020		11:03	1-3	.333	0-0	.000	1-2	.500	2	2	4	2.5	0	0	0	0	0	3	2.5
Flagler	12/06/2020		01:22	0-0	.000	0-0	.000	0-0	.000	0	0	0	1.7	0	0	2	0	0	0	1.7
Totals		0	14:38	2-5	.400	0-0	.000	1-2	.500	2	3	5	1.7	0	0	3	0	0	5	1.7

Player Averages

Games Played	Minutes/ game	Points/ game	FG Pct	3FG Pct	FT Pct	Rebounds/ game	Assists/ game	Turnovers/ game	Assist/Turnover ratio	Steals/ game	Blocks/ game
3	4.9	1.7	40.0	0.0	50.0	1.7	0.0	1.0	0.0	0.0	0.0

CAREER HIGHS

Points	3, vs St. Andrews, 12/5/20
Rebounds	4, vs St. Andrews, 12/5/20
Assists	N/A
Blocks	N/A
Steals	N/A
FGM	1, twice
FGA	3, vs St. Andrews, 12/5/20
3FGM	N/A
3FGA	N/A
FTM	1, vs St. Andrews, 12/5/20
FTA	2, vs St. Andrews, 12/5/20
Minutes	11, vs St. Andrews, 12/5/20

SEASON HIGHS

Points	3, vs St. Andrews, 12/5/20
Rebounds	4, vs St. Andrews, 12/5/20
Assists	N/A
Blocks	N/A
Steals	N/A
FGM	1, twice
FGA	3, vs St. Andrews, 12/5/20
3FGM	N/A
3FGA	N/A
FTM	1, vs St. Andrews, 12/5/20
FTA	2, vs St. Andrews, 12/5/20
Minutes	11, vs St. Andrews, 12/5/20

Career Statistics

SEASON	TEAM	GP-GS	MIN/AVG	Field Goals		3-Point		F-Throws		Rebounds				Scoring						
				FG-FGA	FG%	3FG-FGA	3FG%	FT-FTA	FT%	OFF	DEF	TOT	AVG	PF	FO	AST	T/O	BLK	STL	PTS
2020-21	USCU	3-0	15/4.9	2-5	.400	0-0	.000	1-2	.500	2	3	5	1.7	0-0	0	3	0	0	5	1.7
TOTAL		3-0	15/4.9	2-5	.400	0-0	.000	1-2	.500	2	3	5	1.7	0-0	0	3	0	0	5	1.7



MOLLY MCCUTCHEON

Junior • 5-7 • Guard

Vincent, Ohio

(Warren HS)

5

Game-By-Game

#5 MCCUTCHEON, Molly

Opponent	Date	GS	MIN	Total		3-Pointers		Free throws		Rebounds				PF	A	T/O	BLK	STL	PTS	AVG
				FG-FGA	PCT	3FG-3FGA	PCT	FT-FTA	PCT	OFF	DEF	TOT	AVG							
at Auburn	11/25/2020	*	33:03	2-7	.286	2-6	.333	0-0	.000	0	0	0	0.0	2	5	2	0	1	6	6.0
Totals		1	33:03	2-7	.286	2-6	.333	0-0	.000	0	0	0	0.0	2	5	2	0	1	6	6.0

Player Averages

Games Played	Minutes/game	Points/game	FG Pct	3FG Pct	FT Pct	Rebounds/game	Assists/game	Turnovers/game	Assist/Turnover ratio	Steals/game	Blocks/game
1	33.1	6.0	28.6	33.3	0.0	0.0	5.0	2.0	2.5	1.0	0.0

CAREER HIGHS

Points	6, at Auburn, 11/25/20
Rebounds	N/A
Assists	5, at Auburn, 11/25/20
Blocks	N/A
Steals	1, 3 times
FGM	2, at Auburn, 11/25/20
FGA	7, at Auburn, 11/25/20
3FGM	2, at Auburn, 11/25/20
3FGA	6, at Auburn, 11/25/20
FTM	1, Converse, 11/13/18
FTA	2, Converse, 11/13/18
Minutes	8, at Furman, 11/17/18

SEASON HIGHS

Points	6, at Auburn, 11/25/20
Rebounds	N/A
Assists	5, at Auburn, 11/25/20
Blocks	N/A
Steals	1, at Auburn, 11/25/20
FGM	2, at Auburn, 11/25/20
FGA	7, at Auburn, 11/25/20
3FGM	2, at Auburn, 11/25/20
3FGA	6, at Auburn, 11/25/20
FTM	N/A
FTA	N/A
Minutes	32, at Auburn, 11/25/20

Career Statistics

SEASON	TEAM	GP-GS	MIN/AVG	Field Goals		3-Point		F-Throws		Rebounds				Scoring						
				FG-FGA	FG%	3FG-FGA	3FG%	FT-FTA	FT%	OFF	DEF	TOT	AVG	PF	FO	AST	TOT	BLK	STL	PTS
2018-19	USCU	9-0	38/4.2	0-5	.000	0-3	.000	1-2	.500	2	2	4	0.4	1-0	3	2	1	2	1	0.1
2019-20	USCU	1-0	2/1.7	0-1	.000	0-1	.000	0-0	.000	0	0	0	0.0	0-0	0	0	0	0	0	0.0
2020-21	USCU	1-1	33/33.1	2-7	.286	2-6	.333	0-0	.000	0	0	0	0.0	2-0	5	2	0	1	6	6.0
TOTAL		11-1	73/6.6	2-13	.154	2-10	.200	1-2	.500	2	2	4	0.4	3-0	8	4	1	3	7	0.6



MCKINLEY BROOKS-SUMPTER

Freshman • 5-8 • Guard

Columbia, S.C.

(AC Flora High School)

10

Game-By-Game

#10 BROOKS-SUMPTER, McKinley

Opponent	Date	GS	MIN	Total		3-Pointers		Free throws		Rebounds				PF				PTS	AVG	
				FG-FGA	PCT	3FG-3FGA	PCT	FT-FTA	PCT	OFF	DEF	TOT	AVG	PF	A	T/O	BLK			STL
at Alabama	12/02/2020	*	35:47	9-18	.500	2-2	1.000	1-2	.500	2	6	8	8.0	3	1	4	0	1	21	21.0
St. Andrews	12/05/2020	*	21:15	7-11	.636	0-0	.000	1-3	.333	0	4	4	6.0	2	2	2	0	3	15	18.0
Flagler	12/06/2020	*	26:54	4-13	.308	0-1	.000	4-5	.800	2	3	5	5.7	4	3	3	0	4	12	16.0
Totals			83:56	20-42	.476	2-3	.667	6-10	.600	4	13	17	5.7	9	6	9	0	8	48	16.0

Player Averages

Games Played	Minutes/game	Points/game	FG Pct	3FG Pct	FT Pct	Rebounds/game	Assists/game	Turnovers/game	Assist/Turnover ratio	Steals/game	Blocks/game
3	28.0	16.0	47.6	66.7	60.0	5.7	2.0	3.0	0.7	2.7	0.0

CAREER HIGHS

Points	21, at Alabama, 12/2/20
Rebounds	8, at Alabama, 12/2/20
Assists	3, vs Flagler, 12/6/20
Blocks	N/A
Steals	4, vs Flagler, 12/6/20
FGM	9, at Alabama, 12/2/20
FGA	18, at Alabama, 12/2/20
3FGM	2, at Alabama, 12/2/20
3FGA	2, at Alabama, 12/2/20
FTM	4, vs Flagler, 12/6/20
FTA	5, vs Flagler, 12/6/20
Minutes	36, at Alabama, 12/2/20

SEASON HIGHS

Points	21, at Alabama, 12/2/20
Rebounds	8, at Alabama, 12/2/20
Assists	3, vs Flagler, 12/6/20
Blocks	N/A
Steals	4, vs Flagler, 12/6/20
FGM	9, at Alabama, 12/2/20
FGA	18, at Alabama, 12/2/20
3FGM	2, at Alabama, 12/2/20
3FGA	2, at Alabama, 12/2/20
FTM	4, vs Flagler, 12/6/20
FTA	5, vs Flagler, 12/6/20
Minutes	36, at Alabama, 12/2/20

BROOKS-SUMPTER, Mckinley

Career Statistics

SEASON	TEAM	GP-GS	MIN/AVG	Field Goals		3-Point		F-Throws		Rebounds				Scoring						
				FG-FGA	FG%	3FG-FGA	3FG%	FT-FTA	FT%	OFF	DEF	TOT	AVG	PF-FO	AST	TO	BLK	STL	PTS	AVG
2020-21	USCU	3-3	84/28.0	20-42	.476	2-3	.667	6-10	.600	4	13	17	5.7	9-0	6	9	0	8	48	16.0
TOTAL		3-3	84/28.0	20-42	.476	2-3	.667	6-10	.600	4	13	17	5.7	9-0	6	9	0	8	48	16.0



JADA LOGAN

Sophomore • 5-8 • Guard

Rutherfordton, N.C.

(RS Central High School)

12

Game-By-Game

CAREER HIGHS

Points	11, FAMU, 11/5/19
Rebounds	11, UNCA, 1/6/20
Assists	8, Western Carolina, 11/12/19
Blocks	N/A
Steals	2, 7 times
FGM	4, Western Carolina, 11/12/19
FGA	13, FAMU, 11/5/19
3FGM	2, twice
3FGA	7, FAMU, 11/5/19
FTM	3, FAMU, 11/5/19
FTA	4, twice
Minutes	39, Longwood, 1/11/20

SEASON HIGHS

Points
Rebounds
Assists
Blocks
Steals
FGM
FGA
3FGM
3FGA
FTM
FTA
Minutes

Career Statistics

SEASON	TEAM	GP-GS	MIN/AVG	Field Goals		3-Point		F-Throws		Rebounds				Scoring						
				FG-FGA	FG%	3FG-FGA	3FG%	FT-FTA	FT%	OFF	DEF	TOT	AVG	PF	FO	AST	TO	BLK	STL	PTS
2019-20	USCU	29-20	600/20.7	36-146	.247	10-50	.200	17-29	.586	37	70	107	3.7	39-0	53	74	0	23	99	3.4
TOTAL		29-20	600/20.7	36-146	.247	10-50	.200	17-29	.586	37	70	107	3.7	39-0	53	74	0	23	99	3.4



ANDA KUZMINA

Senior • 5-9 • Guard

Riga, Latvia

(Latvijas Universitate)

15

Game-By-Game

#15 KUZMINA, Anda

Opponent	Date	GS	MIN	Total		3-Pointers		Free throws		Rebounds				PF		T/O		BLK		STL		PTS	
				FG-FGA	PCT	3FG-3FGA	PCT	FT-FTA	PCT	OFF	DEF	TOT	AVG	A	T	BLK	STL	PTS	AVG				
at Auburn	11/25/2020	*	16:38	0-2	.000	0-1	.000	0-0	.000	0	1	1	1.0	1	2	1	0	3	0	0	0	0.0	
St. Andrews	12/05/2020		20:05	3-6	.500	0-3	.000	0-0	.000	0	2	2	1.5	3	4	1	0	0	0	0	6	3.0	
Flagler	12/06/2020		05:06	0-1	.000	0-1	.000	0-0	.000	0	1	1	1.3	0	0	0	0	0	0	0	0	2.0	
Totals		1	41:49	3-9	.333	0-5	.000	0-0	.000	0	4	4	1.3	4	6	2	0	3	6	2	0	2.0	

Player Averages

Games Played	Minutes/ game	Points/ game	FG Pct	3FG Pct	FT Pct	Rebounds/ game	Assists/ game	Turnovers/ game	Assist/Turnover ratio	Steals/ game	Blocks/ game
3	13.9	2.0	33.3	0.0	0.0	1.3	2.0	0.7	3.0	1.0	0.0

CAREER HIGHS

Points	20, Brevard, 1/2/18
Rebounds	8, twice
Assists	10, Presbyterian, 2/4/20
Blocks	1, 4 times
Steals	4, at Winthrop, 3/7/20
FGM	8, Brevard, 1/2/18
FGA	15, twice
3FGM	5, at Winthrop, 1/9/19
3FGA	9, 3 times
FTM	7, Winthrop, 2/26/19
FTA	8, Winthrop, 2/26/19
Minutes	40, N.C. Central, 12/30/17

SEASON HIGHS

Points	6, vs St. Andrews, 12/6/20
Rebounds	2, vs St. Andrews, 12/6/20
Assists	2, at Auburn, 11/25/20
Blocks	N/A
Steals	3, at Auburn, 11/25/20
FGM	3, vs St. Andrews, 12/5/20
FGA	6, vs St. Andrews, 12/5/20
3FGM	N/A
3FGA	3, vs St. Andrews, 12/5/20
FTM	N/A
FTA	N/A
Minutes	20, vs. St. Andrews, 12/5/20

Career Statistics

SEASON	TEAM	GP-GS	MIN/AVG	Field Goals		3-Point		F-Throws		Rebounds				Scoring						
				FG-FGA	FG%	3FG-FGA	3FG%	FT-FTA	FT%	OFF	DEF	TOT	AVG	PF-FO	AST	TO	BLK	STL	PTS	AVG
2017-18	USCU	30-29	811/27.0	96-251	.382	40-121	.331	30-43	.698	14	79	93	3.1	41-0	46	96	1	13	262	8.7
2018-19	USCU	30-12	451/15.0	40-136	.294	23-81	.284	9-10	.900	9	44	53	1.8	22-0	16	26	3	11	112	3.7
2019-20	USCU	30-14	590/19.7	45-125	.360	15-68	.221	16-24	.667	12	69	81	2.7	27-0	40	57	3	15	121	4.0
2020-21	USCU	3-1	42/13.9	3-9	.333	0-5	.000	0-0	.000	0	4	4	1.3	4-0	6	2	0	3	6	2.0
TOTAL		93-56	1894/20.4	184-521	.353	78-275	.284	55-77	.714	35	196	231	2.5	94-0	108	181	7	42	501	5.4



MARNICHA PRUDENT

Junior • 5-11 • Forward

Ft. Lauderdale, Fla.

(Indian River State College)

21

Game-By-Game

#21 PRUDENT, Marnicha

Opponent	Date	GS	MIN	Total		3-Pointers		Free throws		Rebounds				PF	A	T/O	BLK	STL	PTS	AVG
				FG-FGA	PCT	3FG-3FGA	PCT	FT-FTA	PCT	OFF	DEF	TOT	AVG							
at Auburn	11/25/2020	*	31:22	2-7	.286	0-0	.000	6-6	1.000	1	9	10	10.0	5	0	3	0	2	10	10.0
at Alabama	12/02/2020	*	12:18	1-3	.333	0-0	.000	0-2	.000	2	1	3	6.5	5	0	1	0	0	2	6.0
St. Andrews	12/05/2020		13:34	1-6	.167	0-0	.000	1-2	.500	1	2	3	5.3	1	2	0	0	1	3	5.0
Flagler	12/06/2020		20:41	2-6	.333	0-0	.000	3-6	.500	0	10	10	6.5	1	3	1	0	0	7	5.5
Totals		2	77:55	6-22	.273	0-0	.000	10-16	.625	4	22	26	6.5	12	5	5	0	3	22	5.5

Player Averages

Games Played	Minutes/game	Points/game	FG Pct	3FG Pct	FT Pct	Rebounds/game	Assists/game	Turnovers/game	Assist/Turnover ratio	Steals/game	Blocks/game
4	19.5	5.5	27.3	0.0	62.5	6.5	1.3	1.3	1.0	0.8	0.0

CAREER HIGHS

Points	10, at Auburn, 11/25/20
Rebounds	10, twice
Assists	3, vs Flagler, 12/6/20
Blocks	N/A
Steals	2, at Auburn, 11/25/20
FGM	2, twice
FGA	7, at Auburn, 11/25/20
3FGM	N/A
3FGA	N/A
FTM	6, at Auburn, 11/25/20
FTA	6, twice
Minutes	32, at Auburn, 11/25/20

SEASON HIGHS

Points	10, at Auburn, 11/25/20
Rebounds	10, twice
Assists	3, vs Flagler, 12/6/20
Blocks	N/A
Steals	2, at Auburn, 11/25/20
FGM	2, twice
FGA	7, at Auburn, 11/25/20
3FGM	N/A
3FGA	N/A
FTM	6, at Auburn, 11/25/20
FTA	6, twice
Minutes	32, at Auburn, 11/25/20

Career Statistics

		Field Goals		3-Point		F-Throws		Rebounds				Scoring									
SEASON	TEAM	GP-GS	MIN/AVG	FG-FGA	FG%	3FG-FGA	3FG%	FT-FTA	FT%	OFF	DEF	TOT	AVG	PF	FO	AST	TO	BLK	STL	PTS	AVG
2020-21	USCU	4-2	78/19.5	6-22	.273	0-0	.000	10-16	.625	4	22	26	6.5	12-2	5	5	0	3	22	5.5	
TOTAL		4-2	78/19.5	6-22	.273	0-0	.000	10-16	.625	4	22	26	6.5	12-2	5	5	0	3	22	5.5	



LILLIAN FLANTOS

Sophomore • 5-11 • Forward

Lumberton, N.C.

(South View HS)

23

Game-By-Game

#23 FLANTOS, Lillian

Opponent	Date	GS	MIN	Total		3-Pointers		Free throws		Rebounds				PF	A	T/O	BLK	STL	PTS	AVG
				FG-FGA	PCT	3FG-3FGA	PCT	FT-FTA	PCT	OFF	DEF	TOT	AVG							
at Auburn	11/25/2020		25:21	2-5	.400	0-0	.000	0-0	.000	2	3	5	5.0	2	0	3	0	1	4	4.0
at Alabama	12/02/2020		28:44	0-2	.000	0-0	.000	0-0	.000	1	1	2	3.5	3	0	1	0	0	0	2.0
St. Andrews	12/05/2020		21:02	5-5	1.000	0-0	.000	0-0	.000	2	5	7	4.7	2	0	0	0	3	10	4.7
Flagler	12/06/2020		15:49	1-2	.500	0-0	.000	0-2	.000	0	0	0	3.5	3	0	2	0	3	2	4.0
Totals		0	90:56	8-14	.571	0-0	.000	0-2	.000	5	9	14	3.5	10	0	6	0	7	16	4.0

Player Averages

Games Played	Minutes/game	Points/game	FG Pct	3FG Pct	FT Pct	Rebounds/game	Assists/game	Turnovers/game	Assist/Turnover ratio	Steals/game	Blocks/game
4	22.7	4.0	57.1	0.0	0.0	3.5	0.0	1.5	0.0	1.8	0.0

CAREER HIGHS

Points	10, vs St. Andrews, 12/5/20
Rebounds	8, at Longwood, 3/4/20
Assists	1, 3 times
Blocks	2, twice
Steals	3, twice
FGM	5, vs St. Andrews, 12/5/20
FGA	6, at Georgia, 11/26/19
3FGM	1, 5 times
3FGA	4, twice
FTM	2, twice
FTA	2, 5 times
Minutes	21, at Winthrop, 3/7/20

SEASON HIGHS

Points	10, vs St. Andrews, 12/5/20
Rebounds	7, vs St. Andrews, 12/5/20
Assists	N/A
Blocks	N/A
Steals	3, twice
FGM	5, vs St. Andrews, 12/5/20
FGA	5, twice
3FGM	N/A
3FGA	N/A
FTM	N/A
FTA	2, vs Flagler, 12/6/20
Minutes	26, at Auburn, 11/25/20

Career Statistics

		Field Goals		3-Point		F-Throws		Rebounds				Scoring								
SEASON	TEAM	GP-GS	MIN/AVG	FG-FGA	FG%	3FG-FGA	3FG%	FT-FTA	FT%	OFF	DEF	TOT	AVG	PF-FO	AST	TO	BLK	STL	PTS	AVG
2019-20	USCU	23-0	208/9.0	12-52	.231	5-30	.167	5-8	.625	19	27	46	2.0	40-0	3	17	6	9	34	1.5
2020-21	USCU	4-0	91/22.7	8-14	.571	0-0	.000	0-2	.000	5	9	14	3.5	10-0	0	6	0	7	16	4.0
TOTAL		27-0	299/11.1	20-66	.303	5-30	.167	5-10	.500	24	36	60	2.2	50-0	3	23	6	16	50	1.9



MAYA TIMBERLAKE

Sophomore • 5-10 • Guard

Norcross, Ga.

(Greater Atlanta Christian HS)

25

Game-By-Game

#23 FLANTOS, Lillian

Opponent	Date	GS	MIN	Total		3-Pointers		Free throws		Rebounds				PF		T/O		BLK	STL	PTS	AVG
				FG-FGA	PCT	3FG-3FGA	PCT	FT-FTA	PCT	OFF	DEF	TOT	AVG	A	T/O						
at Auburn	11/25/2020		25:21	2-5	.400	0-0	.000	0-0	.000	2	3	5	5.0	2	0	3	0	1	4	4.0	
at Alabama	12/02/2020		28:44	0-2	.000	0-0	.000	0-0	.000	1	1	2	3.5	3	0	1	0	0	0	2.0	
St. Andrews	12/05/2020		21:02	5-5	1.000	0-0	.000	0-0	.000	2	5	7	4.7	2	0	0	0	3	10	4.7	
Flagler	12/06/2020		15:49	1-2	.500	0-0	.000	0-2	.000	0	0	0	3.5	3	0	2	0	3	2	4.0	
Totals		0	90:56	8-14	.571	0-0	.000	0-2	.000	5	9	14	3.5	10	0	6	0	7	16	4.0	

Player Averages

Games Played	Minutes/game	Points/game	FG Pct	3FG Pct	FT Pct	Rebounds/game	Assists/game	Turnovers/game	Assist/Turnover ratio	Steals/game	Blocks/game
4	22.7	4.0	57.1	0.0	0.0	3.5	0.0	1.5	0.0	1.8	0.0

CAREER HIGHS

- Points 11, vs St. Andrews, 12/5/20
- Rebounds 4, twice
- Assists 4, Mars Hill, 11/16/19
- Blocks 1, Hampton, 2/18/20
- Steals 2, 6 times
- FGM 5, vs St. Andrews, 12/5/20
- FGA 8, twice
- 3FGM 2, Mars Hill, 11/16/19
- 3FGA 4, 3 times
- FTM 1, three times
- FTA 2, three times
- Minutes 31, at South Carolina, 11/21/19

SEASON HIGHS

- Points 11, vs St. Andrews, 12/5/20
- Rebounds 4, vs St. Andrews, 12/5/20
- Assists 3, vs Flagler, 12/6/20
- Blocks N/A
- Steals 2, vs St. Andrews, 12/5/20
- FGM 5, vs St. Andrews, 12/5/20
- FGA 8, vs St. Andrews, 12/5/20
- 3FGM N/A
- 3FGA N/A
- FTM 1, vs St. Andrews, 12/5/20
- FTA 2, vs St. Andrews, 12/5/20
- Minutes 28, vs St. Andrews, 12/5/20

Career Statistics

SEASON	TEAM	GP-GS	MIN/AVG	Field Goals		3-Point		F-Throws		Rebounds				Scoring						
				FG-FGA	FG%	3FG-FGA	3FG%	FT-FTA	FT%	OFF	DEF	TOT	AVG	PF-FO	AST	TO	BLK	STL	PTS	AVG
2019-20	USCU	28-0	315/11.3	14-65	.215	6-32	.188	2-4	.500	12	20	32	1.1	42-0	20	24	1	15	36	1.3
2020-21	USCU	3-0	66/21.8	6-13	.462	0-0	.000	1-2	.500	2	6	8	2.7	7-0	5	5	0	2	13	4.3
TOTAL		31-0	381/12.3	20-78	.256	6-32	.188	3-6	.500	14	26	40	1.3	49-0	25	29	1	17	49	1.6



BARRETT HERRING

Junior • 6-3 • Center

Birmingham, Ala.

(Spain Park HS)

30

Game-By-Game

CAREER HIGHS

Points	18, at Gardner-Webb, 1/18/20
Rebounds	15, Gardner-Webb, 2/29/20
Assists	3, Hampton, 1/14/20
Blocks	4, twice
Steals	2, twice
FGM	7, at Gardner-Webb, 1/18/20
FGA	15, twice
3FGM	1, twice
3FGA	2, Hampton, 1/14/20
FTM	6, Hampton, 1/14/20
FTA	7, UNCA, 1/6/20
Minutes	32, Gardner-Webb, 2/29/20

SEASON HIGHS

Points
Rebounds
Assists
Blocks
Steals
FGM
FGA
3FGM
3FGA
FTM
FTA
Minutes

Career Statistics

SEASON	TEAM	GP-GS	MIN/AVG	Field Goals		3-Point		F-Throws		Rebounds				Scoring						
				FG-FGA	FG%	3FG-FGA	3FG%	FT-FTA	FT%	OFF	DEF	TOT	AVG	PF-FO	AST	TO	BLK	STL	PTS	AVG
2018-19	USCU	5-1	22/4.3	0-3	.000	0-0	.000	1-4	.250	3	2	5	1.0	6-0	0	2	4	1	1	0.2
2019-20	USCU	25-19	476/19.0	76-195	.390	2-10	.200	40-63	.635	45	94	139	5.6	53-1	13	29	36	9	194	7.8
TOTAL	30-20	497/16.6	76-198	.384	2-10	.200	41-67	.612	48	96	144	4.8	59-1	13	31	40	10	195	6.5	



MICHAELA GIBBONS

Senior • 5-11 • Forward

Troutman, N.C.

(Hopewell HS)

33

Game-By-Game

#33 GIBBONS, Michaela

Opponent	Date	GS	MIN	Total		3-Pointers		Free throws		Rebounds				PF	A	T/O	BLK	STL	PTS	AVG	
				FG-FGA	PCT	3FG-3FGA	PCT	FT-FTA	PCT	OFF	DEF	TOT	AVG								
at Auburn	11/25/2020	*	12:30	1-5	.200	0-1	.000	0-0	.000	0	1	1	1.0	2	0	2	0	0	2	2.0	
at Alabama	12/02/2020	*	34:57	2-13	.154	2-10	.200	0-0	.000	0	7	7	4.0	3	1	2	0	1	6	4.0	
St. Andrews	12/05/2020	*	25:33	4-7	.571	2-5	.400	0-0	.000	0	2	2	3.3	2	1	3	1	1	10	6.0	
Flagler	12/06/2020	*	13:24	0-5	.000	0-1	.000	0-0	.000	0	2	2	3.0	1	0	1	0	0	0	4.5	
Totals			4	86:24	7-30	.233	4-17	.235	0-0	.000	0	12	12	3.0	8	2	8	1	2	18	4.5

Player Averages

Games Played	Minutes/game	Points/game	FG Pct	3FG Pct	FT Pct	Rebounds/game	Assists/game	Turnovers/game	Assist/Turnover ratio	Steals/game	Blocks/game
4	21.6	4.5	23.3	23.5	0.0	3.0	0.5	2.0	0.3	0.5	0.3

CAREER HIGHS

Points 21, Charleston Southern, 1/19/19
 Rebounds 12, Longwood, 1/26/19
 Assists 4, UNCA, 1/6/20
 Blocks 1, 15 times
 Steals 5, FAMU, 11/5/19
 FGM 8, at N.C. Central, 11/24/18
 FGA 19, at Hampton, 1/29/19
 3FGM 7, Charleston Southern, 1/19/19
 3FGA 13, Western Carolina, 11/12/19
 FTM 6, Brevard, 12/18/18
 FTA 6, Brevard, 12/18/18
 Minutes 45, Campbell, 2/1/20

SEASON HIGHS

Points 10, vs St. Andrews, 12/5/20
 Rebounds 2, twice
 Assists 1, vs St. Andrews, 12/5/20
 Blocks 1, vs St. Andrews, 12/5/20
 Steals 1, vs St. Andrews, 12/5/20
 FGM 4, vs St. Andrews, 12/5/20
 FGA 7, vs St. Andrews, 12/5/20
 3FGM 2, vs St. Andrews, 12/5/20
 3FGA 5, vs St. Andrews, 12/5/20
 FTM N/A
 FTA N/A
 Minutes 25, vs St. Andrews, 12/5/20

Career Statistics

SEASON	TEAM	GP-GS	MIN/AVG	Field Goals		3-Point		F-Throws		Rebounds				Scoring						
				FG-FGA	FG%	3FG-FGA	3FG%	FT-FTA	FT%	OFF	DEF	TOT	AVG	PF-FO	AST	TO	BLK	STL	PTS	AVG
2017-18	USCU	26-0	296/11.4	38-99	.384	19-59	.322	14-19	.737	10	36	46	1.8	33-1	4	14	7	12	109	4.2
2018-19	USCU	29-18	858/29.6	92-275	.335	54-174	.310	15-22	.682	19	130	149	5.1	57-0	11	47	8	38	253	8.7
2019-20	USCU	30-30	1033/34.4	53-225	.236	42-180	.233	9-15	.600	9	134	143	4.8	37-0	32	53	10	30	157	5.2
2020-21	USCU	4-4	86/21.6	7-30	.233	4-17	.235	0-0	.000	0	12	12	3.0	8-0	2	8	1	2	18	4.5
TOTAL		89-52	2273/25.5	190-629	.302	119-430	.277	38-56	.679	38	312	350	3.9	135-1	49	122	26	82	537	6.0



MOLLY COLEMAN

Junior • 6-2 • Forward

Clinton, South Australia

(Gillette College)

34

Game-By-Game

#34 COLEMAN, Molly

Opponent	Date	GS	MIN	Total		3-Pointers		Free throws		Rebounds				PF	A	T/O	BLK	STL	PTS	AVG
				FG-FGA	PCT	3FG-3FGA	PCT	FT-FTA	PCT	OFF	DEF	TOT	AVG							
at Auburn	11/25/2020		05:36	1-2	.500	0-0	.000	0-0	.000	0	1	1	1.0	0	0	0	0	0	2	2.0
at Alabama	12/02/2020		17:29	3-6	.500	0-0	.000	2-4	.500	1	1	2	1.5	1	0	2	0	0	8	5.0
St. Andrews	12/05/2020	*	14:42	2-5	.400	0-0	.000	0-0	.000	0	3	3	2.0	2	0	1	0	0	4	4.7
Flagler	12/06/2020	*	28:44	5-5	1.000	0-0	.000	3-9	.333	1	3	4	2.5	0	3	2	0	1	13	6.8
Totals		2	66:31	11-18	.611	0-0	.000	5-13	.385	2	8	10	2.5	3	3	5	0	1	27	6.8

Player Averages

Games Played	Minutes/game	Points/game	FG Pct	3FG Pct	FT Pct	Rebounds/game	Assists/game	Turnovers/game	Assist/Turnover ratio	Steals/game	Blocks/game
4	16.6	6.8	61.1	0.0	38.5	2.5	0.8	1.3	0.6	0.3	0.0

CAREER HIGHS

Points	13, vs Flagler, 12/6/20
Rebounds	4, vs Flagler, 12/6/20
Assists	3, vs Flagler, 12/6/20
Blocks	N/A
Steals	1, vs Flagler, 12/6/20
FGM	5, vs Flagler, 12/6/20
FGA	6, at Alabama, 12/2/20
3FGM	N/A
3FGA	N/A
FTM	3, vs Flagler, 12/6/20
FTA	9, vs Flagler, 12/6/20
Minutes	28, vs Flagler, 12/6/20

SEASON HIGHS

Points	13, vs Flagler, 12/6/20
Rebounds	4, vs Flagler, 12/6/20
Assists	3, vs Flagler, 12/6/20
Blocks	N/A
Steals	1, vs Flagler, 12/6/20
FGM	5, vs Flagler, 12/6/20
FGA	6, at Alabama, 12/2/20
3FGM	N/A
3FGA	N/A
FTM	3, vs Flagler, 12/6/20
FTA	9, vs Flagler, 12/6/20
Minutes	28, vs Flagler, 12/6/20

Career Statistics

		Field Goals		3-Point		F-Throws		Rebounds				Scoring								
SEASON	TEAM	GP-GS	MIN/AVG	FG-FGA	FG%	3FG-FGA	3FG%	FT-FTA	FT%	OFF	DEF	TOT	AVG	PF-FO	AST	TO	BLK	STL	PTS	AVG
2020-21	USCU	4-2	67/16.6	11-18	.611	0-0	.000	5-13	.385	2	8	10	2.5	3-0	3	5	0	1	27	6.8
TOTAL		4-2	67/16.6	11-18	.611	0-0	.000	5-13	.385	2	8	10	2.5	3-0	3	5	0	1	27	6.8



SHELBY GLANCE

Sophomore • 5-11 • Forward

Waynesville, N.C.

(Tuscola HS)

35

Game-By-Game

CAREER HIGHS

Points	6, Hampton, 2/18/20
Rebounds	3, twice
Assists	1, twice
Blocks	N/A
Steals	N/A
FGM	2, Hampton, 2/18/20
FGA	9, Charleston So., 2/11/20
3FGM	2, Hampton, 2/18/20
3FGA	9, Charleston So., 2/11/20
FTM	1, Presbyterian, 2/4/20
FTA	2, Presbyterian, 2/4/20
Minutes	19, Presbyterian, 2/4/20

SEASON HIGHS

Points
Rebounds
Assists
Blocks
Steals
FGM
FGA
3FGM
3FGA
FTM
FTA
Minutes

Career Statistics

SEASON	TEAM	GP-GS	MIN/AVG	Field Goals		3-Point		F-Throws		Rebounds				Scoring						
				FG-FGA	FG%	3FG-FGA	3FG%	FT-FTA	FT%	OFF	DEF	TOT	AVG	PF	FO	AST	TO	BLK	STL	PTS
2019-20	USCU	12-0	83/6.9	6-29	.207	6-28	.214	1-2	.500	1	13	14	1.2	2-0	2	2	0	0	19	1.6
TOTAL		12-0	83/6.9	6-29	.207	6-28	.214	1-2	.500	1	13	14	1.2	2-0	2	2	0	0	19	1.6

Roster

NUMERICAL

No.	Name	Pos.	Yr.	Ht.	Hometown/Previous School
0	Dakota McCaughan	G	Fr.	5-5	Secane, Penn. / Ridley HS
1	Denijsha Wilson	G	Jr.	5-3	Darby, Penn. / Labette Community College
3	Gift Sampson	F	Jr.	6-0	Lagos, Nigeria / Labette Community College
5	Molly McCutcheon	G	Jr.	5-7	Vincent, Ohio / Warren HS
10	McKinley Brooks-Sumpter	G	R-Fr.	5-8	Columbia, S.C. / AC Flora HS
12	Jada Logan	G	So.	5-8	Rutherfordton, N.C. / R-S Central HS
15	Anda Kuzmina	G	Sr.	5-9	Riga, Latvia / Latvijas Universitate
21	Marnicha Prudent	F	Jr.	5-11	Ft. Lauderdale, Fla. / Indian River State College
23	Lillian Flantos	F	So.	5-11	Lumberton, N.C. / South View HS
25	Maya Timberlake	G/F	So.	5-10	Norcross, Ga. / Greater Atlanta Christian HS
30	Barrett Herring	C	Jr.	6-3	Birmingham, Ala. / Spain Park HS
33	Michaela Gibbons	F	Sr.	5-11	Troutman, N.C. / Hopewell HS
34	Molly Coleman	F	Jr.	6-2	Clinton, South Australia / Gillette College
35	Shelby Glance	F	So.	5-11	Waynesville, N.C. / Tuscola HS

ALPHABETICAL

No.	Name	Pos.	Yr.	Ht.	Hometown/Previous School
10	McKinley Brooks-Sumpter	G	R-Fr.	5-8	Columbia, S.C. / AC Flora HS
34	Molly Coleman	F	Jr.	6-2	Clinton, South Australia / Gillette College
23	Lillian Flantos	F	So.	5-11	Lumberton, N.C. / South View HS
33	Michaela Gibbons	F	Sr.	5-11	Troutman, N.C. / Hopewell HS
35	Shelby Glance	F	So.	5-11	Waynesville, N.C. / Tuscola HS
30	Barrett Herring	C	Jr.	6-3	Birmingham, Ala. / Spain Park HS
15	Anda Kuzmina	G	Sr.	5-9	Riga, Latvia / Latvijas Universitate
12	Jada Logan	G	So.	5-8	Rutherfordton, N.C. / R-S Central HS
0	Dakota McCaughan	G	Fr.	5-5	Secane, Penn. / Ridley High School
5	Molly McCutcheon	G	Jr.	5-7	Vincent, Ohio / Warren HS
21	Marnicha Prudent	F	Jr.	5-11	Ft. Lauderdale, Fla. / Indian River State College
3	Gift Sampson	F	Jr.	6-0	Lagos, Nigeria / Labette Community College
25	Maya Timberlake	G/F	So.	5-10	Norcross, Ga. / Greater Atl Christian HS
1	Denijsha Wilson	G	Jr.	5-3	Darby, Penn. / Labette Community College

Coaching Staff**Head Coach:** Becky Burke (1st season)**Assistant Coach:** Candyce Wheeler (1st season)**Assistant Coach:** Drew Landers (1st season)**Assistant Coach:** Nicole Ambrose (1st season)

Radio/TV Chart



#0 Dakota McCaughan
Fr. | G | 5-5



#1 Denijsha Wilson
Jr. | G | 5-3



#3 Gift Sampson
Jr. | F | 6-0



#5 Molly McCutcheon
Jr. | G | 5-7



#10 McKinley Brooks-Sumpter
RS Fr. | G | 5-8



#12 Jada Logan
So. | G | 5-8



#15 Anda Kuzmina
Sr. | G | 5-9



#21 Marnicha Prudent
Jr. | F | 5-11



#23 Lillian Flantos
So. | F | 5-11



#25 Maya Timberlake
So. | G/F | 5-10



#30 Barrett Herring
Jr. | C | 6-3



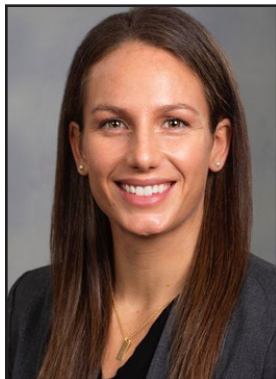
#33 Michaela Gibbons
Sr. | F | 5-11



#34 Molly Coleman
Jr. | F | 6-2



#35 Shelby Glance
So. | F | 5-11



Becky Burke
Head Coach



Candyce Wheeler
Assistant Coach



Drew Landers
Assistant Coach



Nicole Ambrose
Assistant Coach