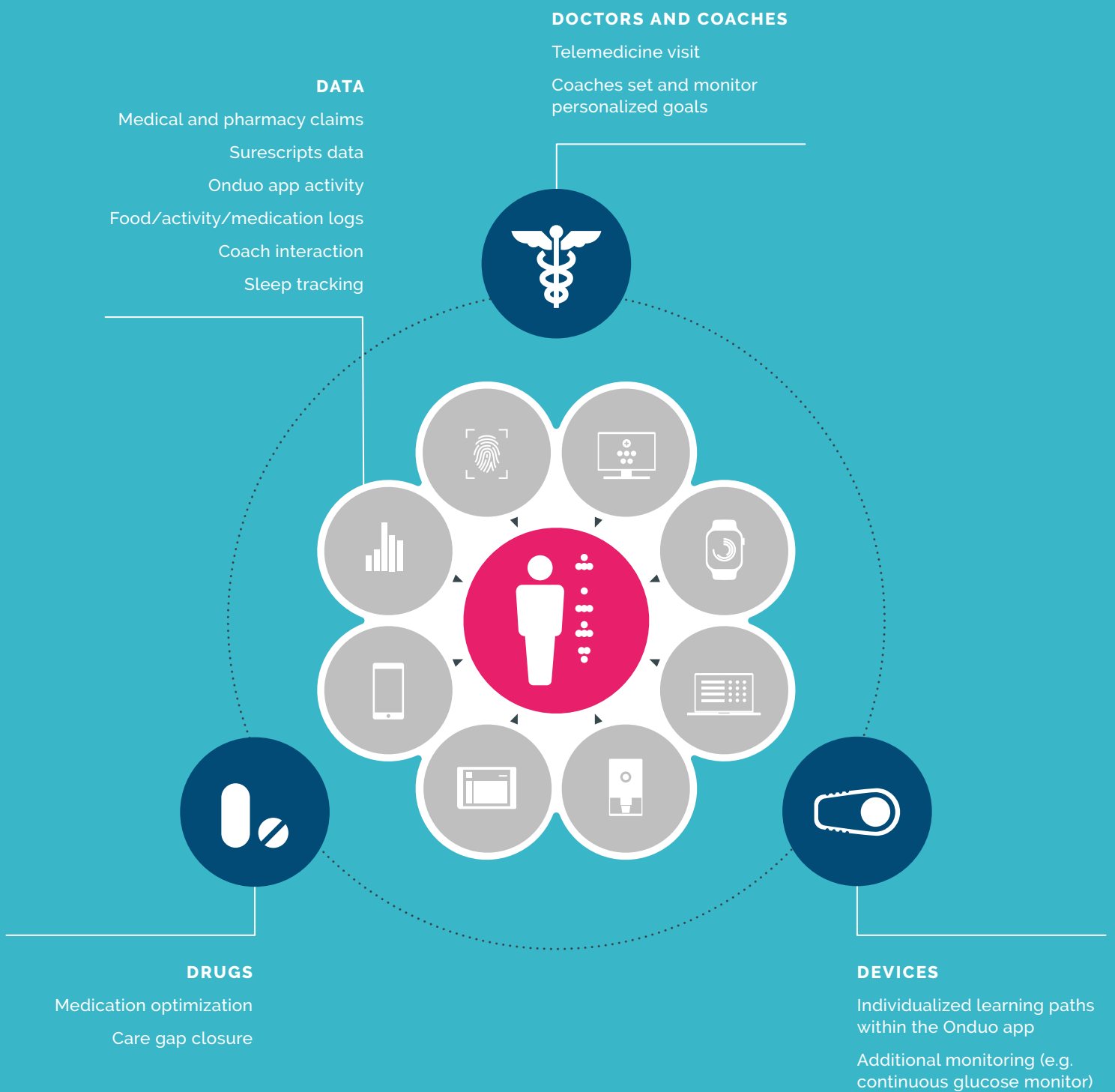


# Seeing the whole patient with digital phenotyping

Genetic phenotyping changed the way we understand health and disease. Digital phenotyping is next-level. It collects, organizes and activates digital data so we can deliver precise interventions in the moments that matter.



Onduo leverages digital phenotyping to deliver the personalized experience most likely to get results precisely when patients need it.

We at Onduo are dedicated to making "healthy" easier, more accessible and finally personalized with our science-backed, data-driven virtual care model—one that can serve people living with chronic conditions and the organizations supporting them. Enabled by technology built by Verily Life Sciences, we deliver lifestyle and clinical interventions that leverage deep analytics, connected smart devices, best-in-class software, and access to specialty care. Onduo headquarters are based out of Newton, MA. Onduo LLC and a network of affiliated professional entities (collectively, "Onduo") collaborate to offer certain care management and coordinated clinical care programs.