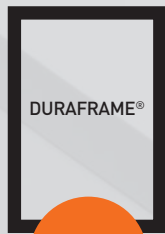


# DURAFRAME<sup>®</sup>

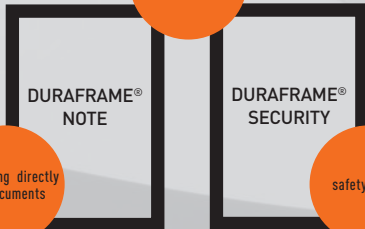
## The Infiframe





DURAFRAME®

can be read from both sides



DURAFRAME® NOTE

DURAFRAME® SECURITY

for writing directly on documents

safety colors



DURAFRAME® WALLPAPER

for sensitive surfaces

## self-adhesive for smooth surfaces

DURAFRAME® stays in place on smooth indoor surfaces such as doors, cabinets, glass panes and walls and can be removed again from solid backing such as glass without leaving a residue.

The color of the frame is identical on both sides. Can be used in both portrait and landscape format.

Various formats ranging from half letter to tabloid are available in 6 frame colors to choose from.

## static cling for glass surfaces

DURAFRAME® SUN holds adhesive-free through static charge. For use on smooth glass panes (e.g. shop windows) that are exposed to direct sunlight. An application on smooth plastic surfaces is possible.

The info frames can be used in both portrait and landscape format.



DURAFRAME® SUN

can be read from both sides

repositionable and reusable

attach without glue

UV-resistant and heat resistant

## magnetic for metallic surfaces

attach  
without glue

repositionable  
and reusable

DURAFRAME®  
MAGNETIC

DURAFRAME®  
MAGNETIC  
SECURITY

safety colors

DURAFRAME®  
MAGNETIC  
PLUS

higher capacity

DURAFRAME® MAGNETIC is the perfect frame for fixing documents to metallic surfaces in production and office such as employee whiteboards, lean cubes, metal cabinets, mesh boxes and machines.

Applications are possible in both portrait and landscape format.

Various formats from half-letter to tabloid are available in a choice of 5 frame colors.

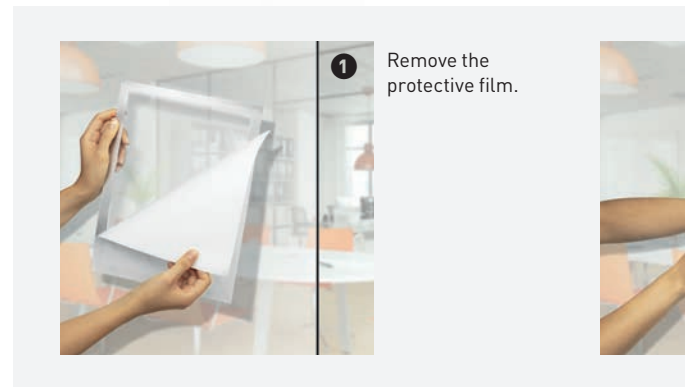
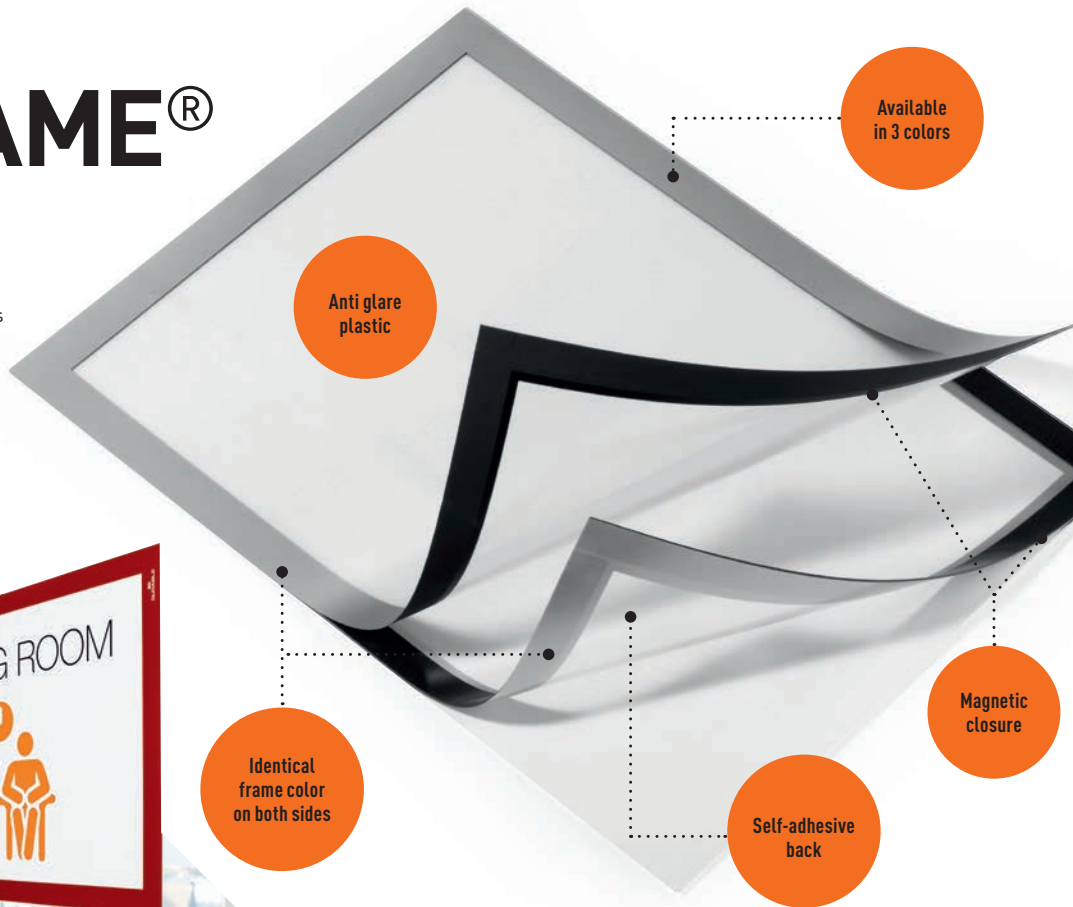
# DURAFRAME®

- Presenting information in a high quality and professional way
- Quick insertion and exchange of documents via a fold-back magnetic frame
- Easy to attach to common surfaces without nails, tools or holes in walls

# DURAFRAME®

The self-adhesive info frame for notices, instructions, signage, directions, help or advertisements.

- Quick insertion and easy exchange of documents via a fold-back magnetic frame
- Can be fixed on solid and smooth surfaces and can be removed from surfaces such as glass
- When applied to glass, information can be read from both sides



# DURAFRAME® NOTE

The self-adhesive infoframe for direct labelling.

- Quick and easy exchange of inserts simply by lifting the magnetic panel
- For writing directly on documents in letter size portrait or landscape format
- Featuring a pen holder with fastening clip
- Stores up to 5 sheets of letter size



# DURAFRAME® SECURITY

The self-adhesive infoframe for safety signs for displaying safety and warning information in production areas and offices.

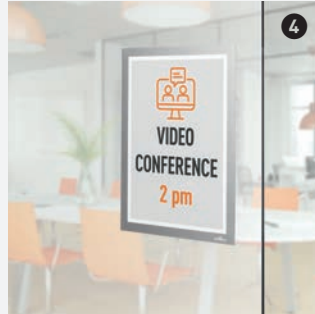
- Eye-catching colors:  
green/white: First aid, escape route maps;  
red/white: Fire safety, danger;  
yellow/black: Occupational safety, Warning or Hazard
- Twin colored frame compliant with ISO 3864-4 for safety colors



2 Attach in the desired position.



3 Lift the infoframe and insert materials.



4 Simple! DURAFRAME® can be fixed on solid and smooth surfaces and can be removed from surfaces such as glass.

# DURAFRAME® WALLPAPER

The removable info frame for information on sensitive surfaces.

- Ideal for notices on wallpaper, wood and plastic surfaces
- Attaches by removable adhesive strips
- Residue-free removal, no adhesive residues
- Areas of application: For documents such as orientation guides and other information
- Incl. replacement set with 4 adhesive strips



# DURAFRAME<sup>®</sup> MAGNETIC

The magnetic infotable to display documents on metallic surfaces in production areas and offices, such as staff whiteboards, metal cabinets, lean cubes, racking and machinery.

- Quick, easy exchange of documents through magnetic frame
- Attaches to metallic surfaces
- Repositionable and reusable
- Anti glare plastic



## DURAFRAME<sup>®</sup> frame colors



Black  
RAL 9004



Silver  
RAL 9006



Red  
RAL 3001



Yellow/Black  
RAL 1003/9004



Green/White  
RAL 6032/9016



Red/White  
RAL 3001/9016

# DURAFRAME<sup>®</sup> SUN

Heavy-duty infotable for use on glass windows exposed to direct sunlight.

- Bubble free attachment via static cling
- Heat resistant up to 158 °F; UV-resistant plastic for up to 2 years
- Leaves no residue once removed
- Reusable



# DURAFRAME® MAGNETIC SECURITY

The magnetic infoframe for safety signs.

- Eye-catching colors:
  - green/white: First aid, Escape route maps;
  - red/white: Fire safety, danger;
  - yellow/black: Occupational safety, Warning or Hazard
- Twin colored frame compliant with ISO 3864-4 for safety colors

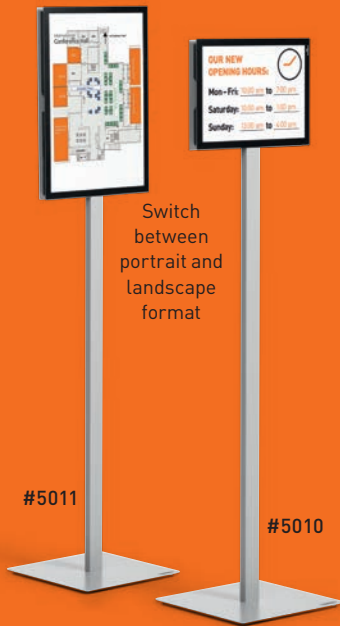


## TIP

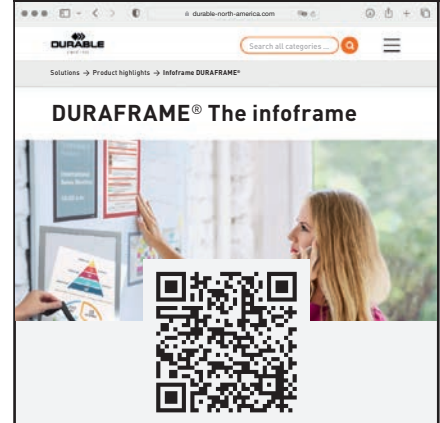
### INFO STAND BASIC

Sturdy floor stand in Tabloid and Letter Size featuring double-side readability. Suitable for both displaying information and for use as an orientation and guidance system.

- Information can be easily changed thanks to the two magnetic DURAFRAME® MAGNETIC infoframes, which are attached to the metal plates
- High degree of stability thanks to the high-quality support profile and the heavy floor plate, with four rubber feet
- Innovative insertion mechanism makes it easy to switch between portrait and landscape format without the need for tools
- Ideal for use as an information stand in reception areas, at trade fairs, in lobbies and in waiting rooms



Further information on the DURAFRAME® infoframes:



# DURAFRAME® MAGNETIC PLUS

The magnetic folding infoframe

- Inserts are kept in good condition
- Protection of inserts from dust and moisture
- Magnetic backing



# DURAFRAME® Product range

## → Self-adhesive

	Format	Product #	Frame colors	Sales unit
<b>DURAFRAME®</b> The self-adhesive infoframe	half-letter	4913...	...01 ●   ...23 ◐	2 per bag
	letter size	4768...	...01 ●   ...23 ◐   ...03 ●	2 per bag
	tabloid	4769...	...01 ●   ...23 ◐	1 per bag
<b>DURAFRAME® SECURITY</b> The self-adhesive infoframe for safety signs	letter size	4770...	...130 ◐   ...131 ◐   ...132 ◐	2 per bag
<b>DURAFRAME® NOTE</b> The self-adhesive infoframe for direct labelling	letter size	4773...	...23 ◐	1 per bag
<b>DURAFRAME® WALLPAPER</b> The self-adhesive infoframe for sensitive surfaces	letter size	4005...	...01 ●   ...23 ◐	1 per bag

## → Static cling – attach without glue

	Format	Product #	Frame colors	Sales unit
<b>DURAFRAME® SUN</b> The infoframe for glass surfaces exposed to sunlight	letter size	4000...	...23 ◐	2 per bag
	tabloid	4001...	...23 ◐	2 per bag

## → Magnetic attachment

	Format	Product #	Frame colors	Sales unit
<b>DURAFRAME® MAGNETIC</b> The magnetic infoframe	half-letter	4721...	...01 ●   ...23 ◐	2 per bag
	letter size	4771...	...01 ●   ...23 ◐	2 per bag
	tabloid	4647...	...01 ●	2 per bag
<b>DURAFRAME® MAGNETIC SECURITY</b> Especially for safety and warning instructions	letter size	4772...	...130 ◐   ...131 ◐   ...132 ◐	2 per bag
<b>DURAFRAME® MAGNETIC PLUS</b> The magnetic folding infoframe	letter size	4004...	...23 ◐	2 per bag