

# ASSEMBLY INSTRUCTIONS



## 3 Shelf Rolling Garment Rack

Total unit weight capacity 500 lbs if used with casters

<p>1</p>	<p>2</p>	<p>3</p>	<p>4</p>	<p>5</p>				
<p>6</p>	<p>7</p>	<p>8</p>	<p>9</p>	<p>10</p>				
<p>A</p> <p>3PCS</p>	<p>B Top</p> <p>4PCS</p>	<p>C Bottom</p> <p>4PCS</p>	<p>D Garment rod</p> <p>1PC</p>	<p>E</p> <p>2PCS 2PCS Packed in one bag</p>	<p>F</p> <p>1PC</p>	<p>G Non locking</p> <p>2PCS</p>	<p>H Locking</p> <p>2PCS</p>	<p>I</p> <p>28PCS (4PCS EXTRA)</p>

Model: ALE- GR354818BL, ALE-GR354818SR

Product support and parts:  
Ayuda del producto y partes: 1-800-733-4000  
Support technique et pieces:

Manufactured for/Hecho para/ Fabrique pour **Alera®** USSCo  
1 Parkway North, Suite 100, Deerfield, IL 60015 © 2013 USSCo  
Made in/ Hecho en/ Fabrique en China

06-013/6

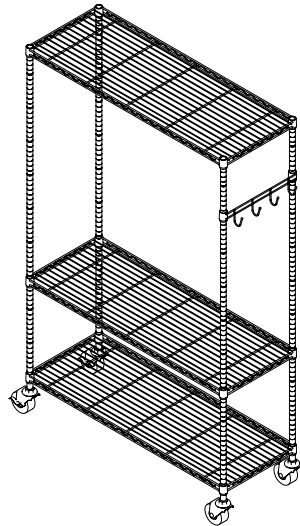
# ASSEMBLY INSTRUCTIONS



## 3 Shelf Rolling Garment Rack

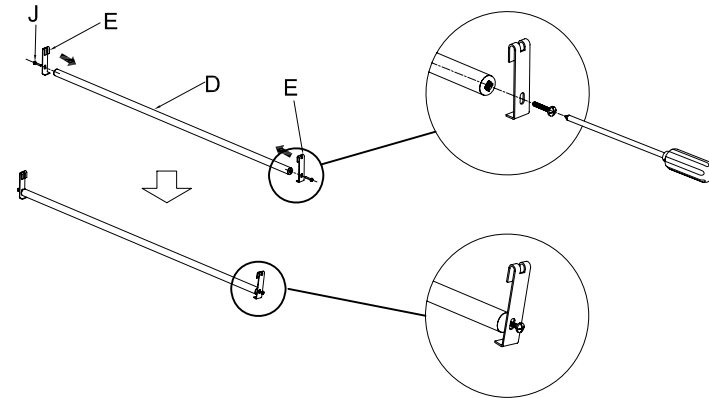
Total unit weight capacity 500 lbs if used with casters

11



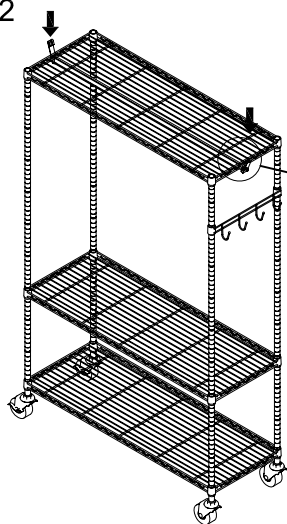
13

Screw driver NOT included

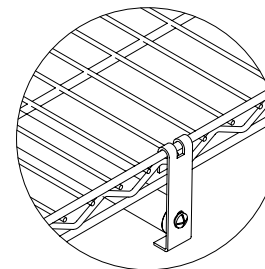
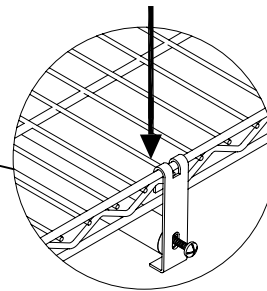


Do not fully tighten screws in this step  
Hanging bar weight capacity 80 lbs

12



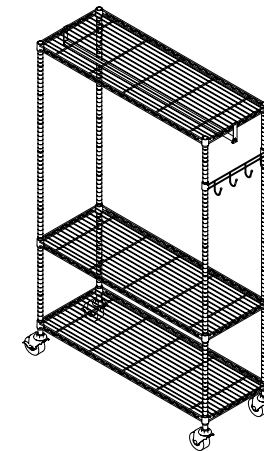
On the middle of shelf



Step 1: Hang the hook on the middle of the shelf  
Hang the other hook on the same location of other side

Step 2: Tighten screw securely for both sides

14



Model: ALE- GR354818BL , ALE-GR354818SR

Product support and parts:  
Ayuda del producto y partes:1-800-733-4000  
Support technique et pieces:

Manufactured for/Hecho para/ Fabriqué pour **ALERA**® USSCo  
1 Parkway North, Suite 100, Deerfield, IL 60015 © 2013 USSCo  
Made in/ Hecho en/ Fabriqué en China

06-013/6