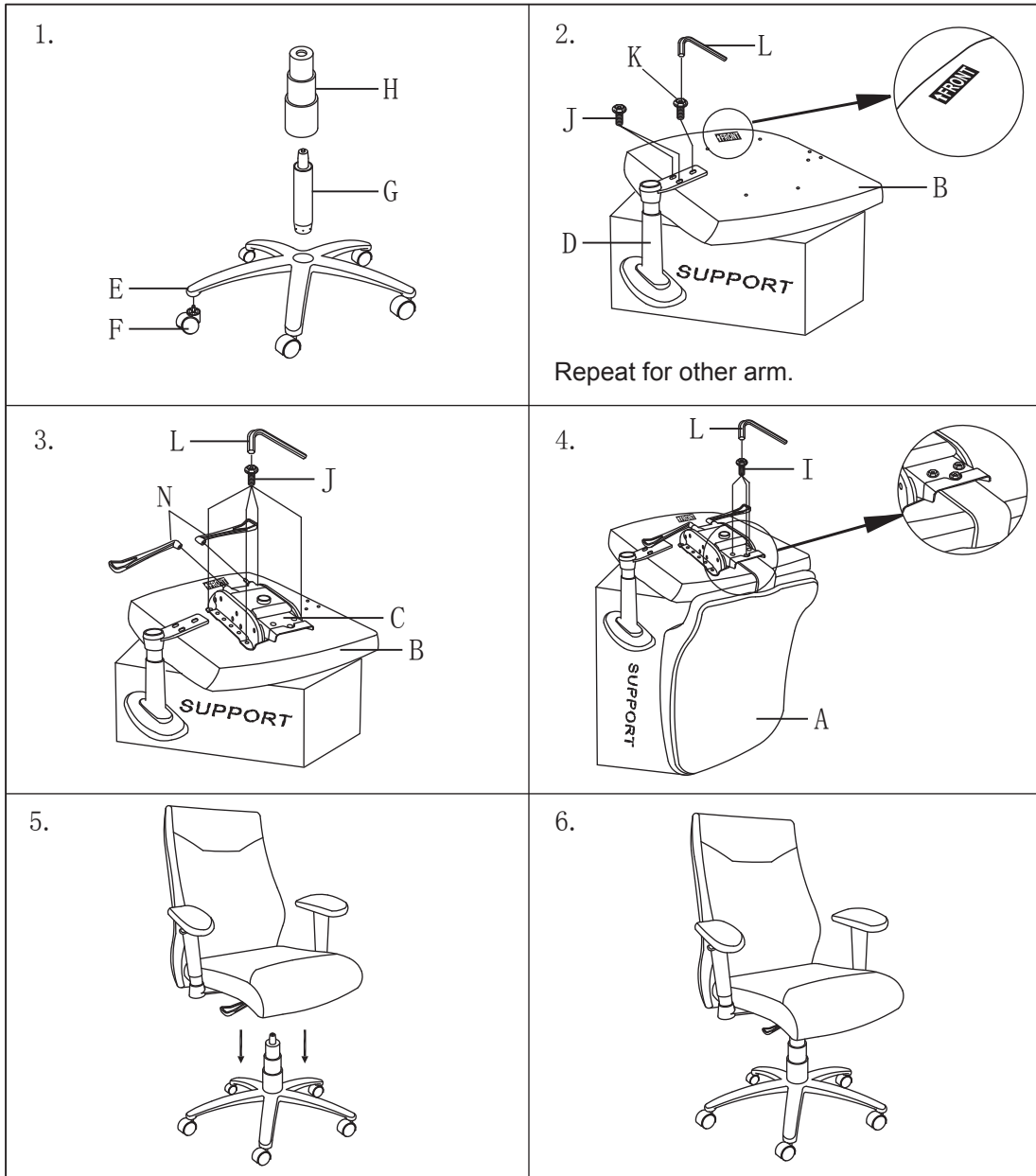




# ASSEMBLY INSTRUCTIONS



A.  1 PC	E.  1 PC	I.  3 PCS
B.  1 PC	F.  5 PCS	J.  8 PCS
C.  1 PC	G.  1 PC	K.  2 PCS
D.  1 PAIR	H.  1 PC	L.  1 PC
		N.  2 PCS

Model: ALE-LC4119  
 Manufactured for/ Hecho para/ Fabriqué pour Alera®/ USSCo,  
 1 Parkway North, Suite 100, Deerfield, IL 60015 ©2013 USSCo  
 Made in/ Hecho en/ Fabriqué en China  
 Product support and parts: 1-800-733-4000  
 Ayuda del producto y partes / Support technique et pieces

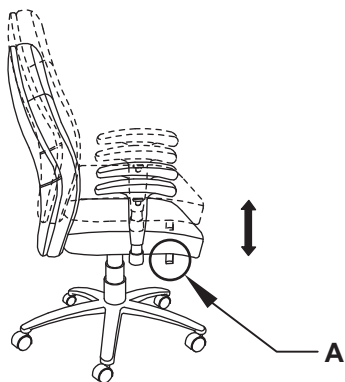


# OPERATING INSTRUCTIONS

Model: ALE-LC4119

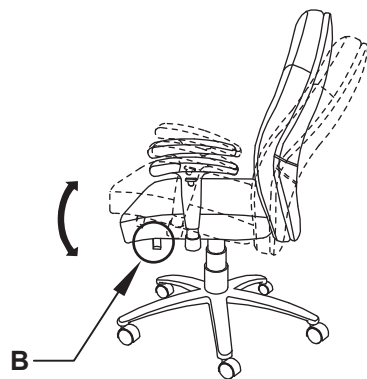
## A. Seat height adjustment

To raise the seat height, stand up from the chair while lifting the lever (A) under the right side of the seat. To lower the seat height, lift the lever (A) while sitting in the chair.



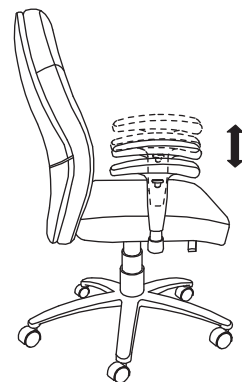
## B. Seat angle with tilt tension

Put down the lever(B), seat and back will adjust based on user body weight for ideal reclining positioning. Raise lever(B) to lock the chair in one of 5 reclined positioning.



## C. Arm height adjustment

To adjust arm height, push the button on the outside of each arm and move the arm up or down. Release the button to set the height.



## D. Arm pad pivot adjustment

The arm pivot adjustment to rotate and lock each arm 30 degrees in either direction off center to suit the user and task.

