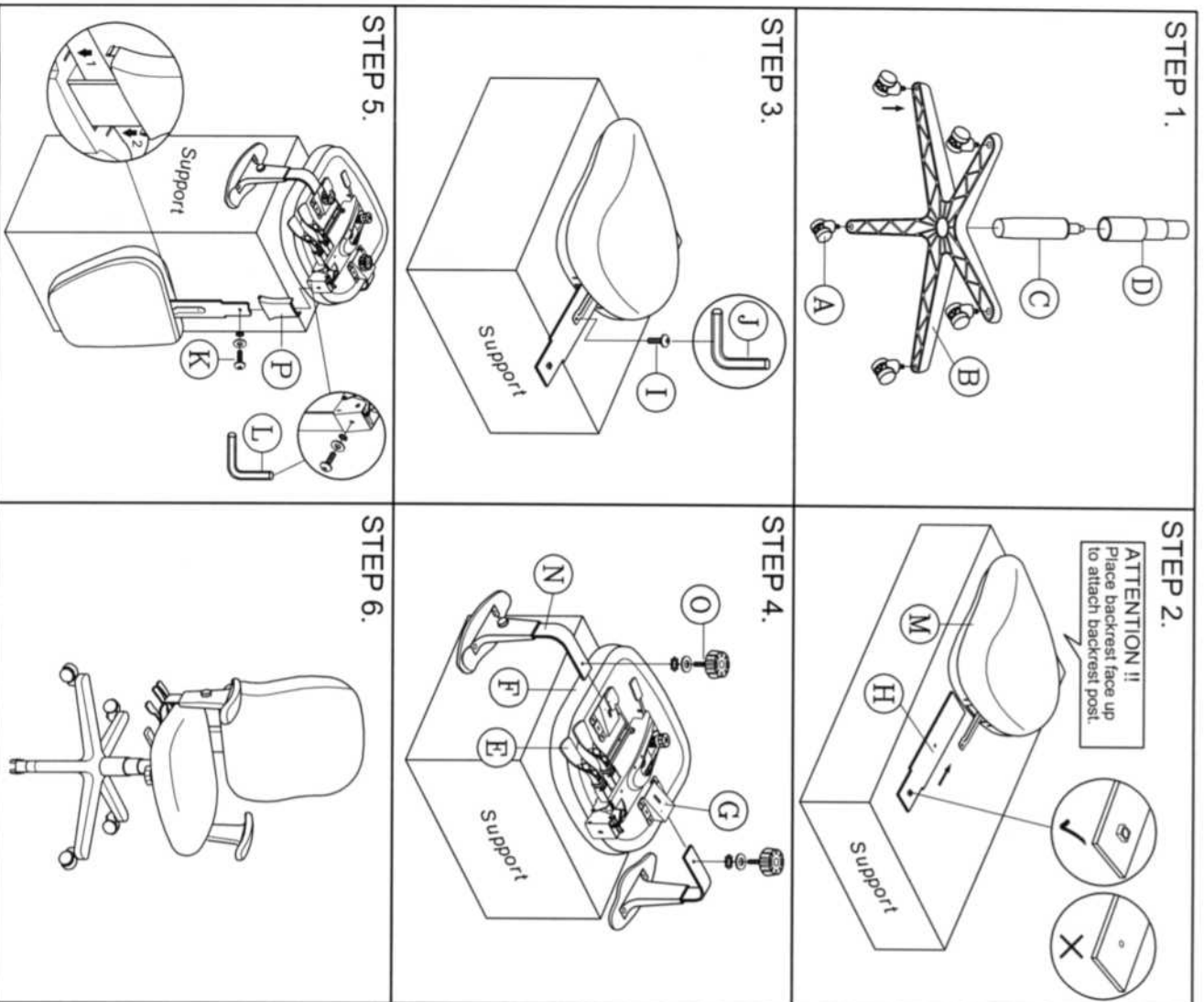


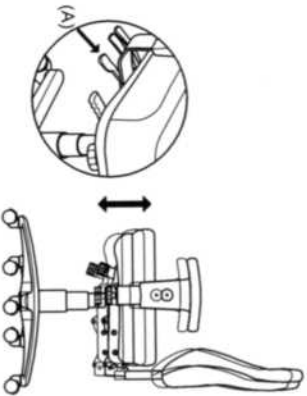
ASSEMBLY INSTRUCTIONS



<p>A</p> <p>Caster (5)</p>	<p>B</p> <p>Base</p>	<p>C</p> <p>Seat Post</p>
<p>D</p> <p>Seat Post Cover</p>	<p>E / F / G (pre-assembled)</p> <p>(E) Mechanism (F) Seat (G) Arm Bracket (2)</p>	
<p>H</p> <p>Backrest Post</p>	<p>I</p> <p>Backrest Screw</p>	<p>J</p> <p>M5 Size Allen Wrench</p>
<p>K</p> <p>Backrest Bolt + Washers</p>	<p>L</p> <p>M6 Size Allen Wrench</p>	<p>M</p> <p>Backrest</p>
<p>N</p> <p>Armrest (2)</p>	<p>O</p> <p>Arm Width Adjustment Knob + Washers (2)</p>	<p>P</p> <p>Backrest Post Cover</p>

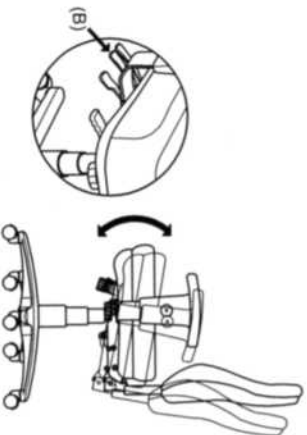
A. Seat height

To raise the seat height, stand up from the chair while lifting the lever (A) under the right side of the seat. To lower the seat height, lift the lever (A) while sitting in the chair.



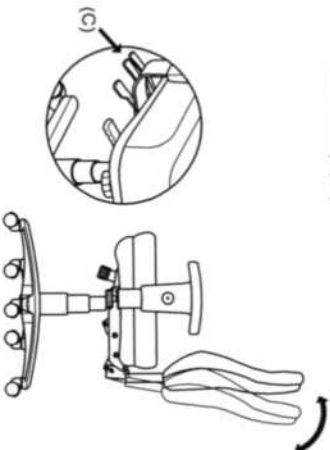
B. Seat angle adjustment

To adjust the seat tilt, pull lever (B) upward while leaning back in the chair to establish desired tilt. Lock position by pushing down on the lever (B). To return the seat to the original position, sit upright and pull the lever (B) upward.



C. Back angle adjustment

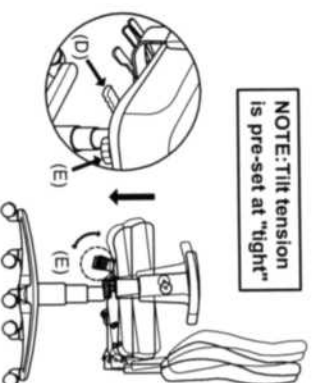
Pull the lever (C) upward while leaning back in the chair to the desired tilt position. Push lever (C) down to lock position. To return the chair to the original position, sit upright and pull the lever (C) upward.



D. Forward tilt lever

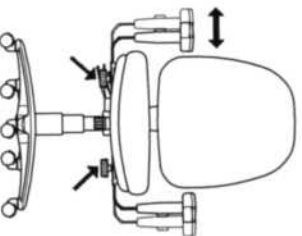
To activate the forward tilt lift the lever (B), lean back slightly and pull lever (D) backward. This will allow you to lean to a forward position. Once the desired angle is reached, push lever (B) downward to lock position.

E. Tilt tension
Knob underneath seat adjusts angle and ease with which chair reclines to the different weights and strengths of different users. To increase tension, turn knob to the right. To release tension (loosen), turn knob to the left.



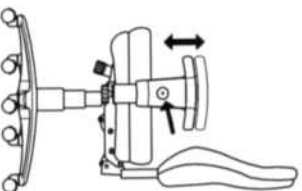
F. Arm width

To adjust the arm width, loosen the bolt under the arm support and adjust to desired placement on the chair.



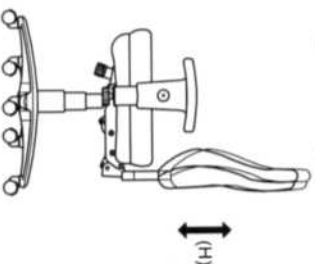
G. Arm height

To adjust arm height, push the button on the outside of each arm and move the arm up or down. Release the button to set the height.



H. Backrest height adjustment

To raise the back, pull up on the seat back until it clicks into the desired height. To lower the back, raise the seat back all the way up until tension is released and then lower all the way down. Raise back up to desired position.



PREVENTIVE MAINTENANCE AND WARNING!

- USE THIS PRODUCT ONLY FOR SEATING ONE PERSON AT A TIME
- DO NOT USE THIS CHAIR AS A STEP STOOL / LADDER
- DO NOT SIT ON ANY PART OF THE CHAIR EXCEPT THE SEAT
- DO NOT USE CHAIR ON UNEVEN FLOOR SURFACES
- DO NOT USE CHAIR UNLESS ALL BOLTS, SCREWS AND KNOBS ARE TIGHT.
- AT LEAST EVERY THREE MONTHS, CHECK ALL BOLTS, SCREWS AND KNOBS TO BE SURE THEY ARE TIGHT
- IF ANY PARTS ARE MISSING, BROKEN, DAMAGED OR WORN, STOP USE OF THE PRODUCT UNTIL REPAIRS ARE MADE USING FACTORY AUTHORIZED PARTS
- DISPOSE OF PACKAGING PROPERLY. PLASTIC BAG IS NOT A TOY
- FAILURE TO FOLLOW THESE WARNINGS COULD RESULT IN SERIOUS INJURY