

OUTPUT

Canon innovation speaks directly to professionals' needs and desires for better tools. Canon's unsurpassed imaging know-how and uncompromising quality standards have resulted in a wide range of tools that include not only the best in image capture but also the cutting edge in image presentation. Whether projecting a business presentation or a motion video, or creating gigantic photo prints for display, Canon has the perfect solution for the imaging professional. Incorporating sophisticated Canon optics and a high-accuracy color management system, Canon REALiS projectors display even the subtlest hues and color gradations with true-to-life accuracy and brilliant clarity. Canon imagePROGRAF and PIXMA Pro printers are raising the bar in professional workflows, enabling the in-house output of everything from proofs and customer deliverables to fine-art gallery prints and large-scale posters, quickly and simply. From idea to presentation, professionals can count on Canon-to-Canon consistency and a streamlined workflow for stellar performance throughout the imaging process.

REALiS MULTIMEDIA LCOS PROJECTORS 131

REALiS WUX4000 D / REALiS WUX4000	132
REALiS WUX10 Mark II D /	
REALiS WUX10 Mark II	133
REALiS SX7 Mark II D / REALiS SX7 Mark II	134
REALiS SX80 Mark II D / REALiS SX80 Mark II	135
REALiS SX60	136
REALiS SX800	137
REALiS X700	138
REALiS Technology	139

PROFESSIONAL PHOTO PRINTERS.....144

imagePROGRAF iPF9100

<i>Ryszard Horowitz</i>	148
<i>Bruce Dorn</i>	152

imagePROGRAF iPF8300

<i>Vincent Isola</i>	154
----------------------------	-----

imagePROGRAF iPF6350

<i>Tyler Stableford</i>	158
-------------------------------	-----

imagePROGRAF iPF6300

<i>Parish Kohanim</i>	162
<i>Stephen Eastwood</i>	166

imagePROGRAF iPF5100

<i>George Lepp</i>	168
<i>Parker Pfister</i>	172
<i>Sandy Puc</i>	174

PIXMA Pro9500 Mark II

<i>Robert Farber</i>	176
<i>Eddie Tapp</i>	180

PIXMA Pro9000 Mark II

<i>Vincent Laforet</i>	182
<i>Michel Tcherevkoff</i>	186

imagePROGRAF Technology 188 |

PIXMA Pro Technology 190 |

REALiS MULTIMEDIA LCOS PROJECTORS



High Resolution and Exceptional Detail for Large Venues



REALiS WUX4000 D

REALiS WUX4000

- Native WUXGA (1920 x 1200) for high-resolution images with exceptional detail and clarity even in large settings.
- 4000 Lumens, 1000:1 Contrast Ratio and HDMI Version 1.3 Deep Color for sharp, bright reproduction of high-quality visuals and direct connection to HD devices.
- REALiS WUX4000 D features a DICOM Simulation Mode for viewing monochrome digital X-Rays, CAT Scans and MRIs with accurate color and precise detail.*
- Three interchangeable Genuine Canon Lenses for clear, rich images to suit any situation.
- Motorized Lens Shift can be operated in both vertical and horizontal directions.

These high-performance WUXGA (1920 x 1200) resolution installation projectors are ideal for large venues: corporate board and conference rooms, educational institutions, museums, galleries, photo studios, and houses of worship. REALiS WUX4000 D features DICOM Simulation mode,* allowing it to faithfully project X-rays, CAT scans, and MRIs using the DICOM standard for education applications. Both models employ Canon's AISYS-enhanced LCOS technology and interchangeable Genuine Canon lenses for spectacularly clear, rich images. An HDMI 1.3 Deep Color terminal projects high-quality digital images and uncompressed 1080p video, while a built-in network connection (RJ-45) offers remote network operation. With expanded color space, advanced optics and 4000 lumens, sharp and brilliant projections reach every chair in the room.

*The WUX4000 D is not a diagnostic projector and should only be used for educational purposes.

Widescreen Projection for Corporate and Specialized Fields



REALiS WUX10 Mark II D

REALiS WUX10 Mark II

- Native WUXGA (1920 x 1200) and 3200 Lumens for exceptional resolution and brightness, perfect for presentations incorporating high-quality visuals.
- 1.5x Optical Powered Zoom Lens accommodates various venues and applications with faithful reproduction.
- HDMI Version 1.3 Deep Color for direct connection to a full range of HD devices.
- Photo Image Mode allows on-site color adjustment to suit ambient lighting conditions.
- WUX10 Mark II D features a DICOM Simulation Mode for viewing monochrome digital X-Rays, CAT Scans and MRIs with accurate color and precise detail.*

High-performance widescreen projectors deliver razor-sharp image quality in WUXGA (1920 x 1200) resolution. LCOS and Canon's exclusive AISYS technology with improved light efficiency, uniformity, and expanded color space provide outstanding color reproduction and exceptionally clear image quality. REALiS WUX10 Mark II D features DICOM Simulation mode,* allowing it to faithfully project X-rays, CAT scans, and MRIs using the DICOM standard for education applications. Photo Mode allows precise on-site color adjustments. Other features include an HDMI terminal (version 1.3 Deep Color) for projection of high-quality digital images and uncompressed 1080p video that's proportionally identical to the source material. Performance is fast, easy and quiet, and a built-in network connection allows remote network operation.

*The WUX10 Mark II D is not a diagnostic projector and should only be used for educational purposes.

Outstanding Color Fidelity for Demanding Designers, Publishers and Photographers



REALiS SX7 Mark II D

REALiS SX7 Mark II

- Native SXGA+ (1400 x 1050) for crisp resolution and 4000 Lumens for brightness, clarity and dimension.
- 1.7x Optical Powered Zoom Lens for clear, high-contrast, true-color images in small or large rooms.
- Adobe RGB Color Space support for images with accurate, uniform color at all stages of production.
- Photo Image Mode allows on-site color adjustment to suit ambient lighting conditions.
- SX7 Mark II D features a DICOM Simulation Mode for viewing monochrome digital X-Rays, CAT Scans and MRIs with accurate color and precise detail.*

The exceptional color reproduction of these multimedia projectors ensures true-to-life high-definition images. Native SXGA+ resolution (1400 x 1050) and Adobe RGB Color Match System provide superior reproduction of source text, graphics and moving images. Ultra-bright 4000 lumens, combined with the Canon AISYS-enhanced LCOS optical system technology, produce seamless images with no gaps between pixels. Photo Mode setting allows precise adjustments to both the color temperature and color level to suit the chosen venue. The AC lamp promotes color fidelity with enhanced red and green for more realistic tones. The SX7 Mark II D features DICOM Simulation mode,* allowing it to faithfully project X-rays, CAT scans, and MRIs using the DICOM standard for education applications.

*The SX7 Mark II D is not a diagnostic projector and should only be used for educational purposes.

Affordable, High-quality Projection for Medical, Corporate and Creative Applications



REALiS SX80 Mark II D

REALiS SX80 Mark II

- SXGA+ (1400 x 1050) and 3000 Lumens for high-resolution, accurate display of widescreen material and bright, true-to-life color.
- 1.5x Optical Powered Zoom Lens allows screen size to match venue.
- PC-free presentations from USB flash drives, PictBridge compatible cameras, HD satellite or cable boxes, digital camcorders or Blu-Ray players.
- Photo Image Mode allows on-site color adjustment to suit ambient lighting conditions.
- SX80 Mark II D features a DICOM Simulation Mode for viewing monochrome digital X-Rays, CAT Scans and MRIs with accurate color and precise detail.*

These affordable high-performance SXGA+ (1400 x 1050) projectors render even the finest details with excellent precision. Data produced on a widescreen laptop is projected accurately, displaying the entire screen in its true proportions. Canon AISYS-enhanced LCOS optical system technology delivers bright, sharp, true-color big-screen images without darkening the conference room or classroom. 3000 lumens offer superior brightness and color balance, perfect for presentations incorporating high-quality visuals. Project PC-free from a USB flash drive or PictBridge compatible camera, or display high-definition images or video from a satellite or cable box, digital camcorder or Blu-Ray player. REALiS SX80 Mark II D features DICOM Simulation mode,* allowing it to faithfully project X-rays, CAT scans, and MRIs using the DICOM standard for education purposes.

*The SX80 Mark II D is not a diagnostic projector and should only be used for educational purposes.

High Quality, Flexible Multimedia Projection for a Wide Range of Applications



REALiS SX60

- SXGA+ (1400 x 1050) for crisp resolution and 720p HD video without compression.
- 2500 Lumens for bright, clear, high quality images.
- 2000:1 contrast ratio (in home cinema mode)
- 1.7x Ultra-Wide Powered Zoom Lens for a diagonal screen size range of 40" (at distance of 3.9') to 300".
- Auto Setup for optimum focus, automatic input port detection, keystone correction and color correction in seconds.
- Versatile connectivity from a wide range of input options including DVI-I input.

REALiS SX60 features Canon's advanced AISYS technology with excellent light efficiency, uniformity, and expanded color space. At 2500 ANSI lumens, this bright, ultra-portable SXGA+ projector delivers an exceptional level of image quality, making it ideal for a wide variety of demanding professional applications. Its 1.7x Ultra-Wide Powered Zoom Lens with Autofocus offers great flexibility in venue size, while super quiet (27dB) operation makes it perfect for classrooms and film screenings. The lightweight SX60 is easy to use, carry and set up, and the DVI-I terminal allows projection of high quality video from satellite and digital cable boxes, as well as DVD players.

Affordable High-resolution Display in a Lightweight, Portable Projector



REALiS SX800

- SXGA+ (1400 x 1050) for sharp resolution, precise detail and proportional representation of widescreen data.
- 3000 Lumens for superior brightness and pure, high-contrast color reproduction.
- 1.5x Optical Powered Zoom Lens accommodates various venues and applications.
- Versatile connectivity to PC, DVD player, video camera and external audio equipment.
- Lightweight and compact: easy to carry and set up wherever it's needed.

REALiS SX800 features high-resolution SXGA+ (1400 x 1050) that is ideal for displaying crisp video, photographs, fine text, spreadsheets, CAD drawings, and engineering diagrams. The large display range reproduces even the smallest details with sharp precision, while the exceptional brightness of 3000 lumens brings enriched color, clarity, and textural nuances to presentations. Canon's proprietary AISYS-enhanced LCOS technology virtually eliminates the distracting "screen door" effect common with LCD units, so intricate details and text as small as 7-point remain crisp and legible. The SX800 supports data produced on a widescreen laptop, projecting the entire screen in its true proportions.

Customizable Color and Maximum Brightness in an Ultra-Portable Projector



REALiS X700

- XGA (1024 x 768) and 4000 Lumens for crisp resolution and easy viewing in any lighting conditions.
- 1.7x Ultra-Wide Powered Zoom Lens for a diagonal screen size range of 40" (at distance of 3.9') to 300".
- DVI-I Input with HDCP (HD Ready) connectivity to project high-quality video from satellite and digital cable boxes and DVD players without any reduction in image quality.
- Advanced Color Management for precise optimization of color display to projection type and source material.
- Auto Setup for optimum focus, automatic input port detection, keystone correction and color correction in seconds.

The sophisticated X700 is an LCOS XGA projector featuring advanced AISYS technology with improved light efficiency, uniformity, and expanded color space. With 4000 ANSI lumens, projections are brightly visible regardless of ambient room lighting. A range of audio inputs, variable audio outputs and an optional Network Operation feature make the X700 a highly versatile projector for the classroom, boardroom or conference room. The 1.7x power zoom lens provides a wider diagonal screen size range that adapts to practically any room, at the same time keeping peripheral image distortion to an absolute minimum. Canon's high-accuracy Color Management System offer myriad options for fine tuning color.

Canon REALiS Technology Goes to Work for Professionals



Technology Designed to Meet Professional Demands

Canon has created the REALiS line of multimedia projectors to meet the exacting demands of professionals in fields ranging from medical education to the fine arts. Used everywhere from corporate boards and conference rooms to classrooms, photo galleries, and houses of worship, from the largest venues to the most intimate spaces, REALiS projectors have the technology professionals need built right in. Incorporating LCOS (Liquid Crystal on Silicon) technology, genuine Canon optics and Canon's high-accuracy color management system into our patented AISYS (Aspectual Illumination System) Optical Engine, Canon REALiS projectors are able to reproduce even the subtlest hues and color gradations. High resolution, bright illumination and quiet performance deliver compelling presentations that get the job done. For professional performance, true-to-life color reproduction and unmatched clarity, there is no substitute for REALiS.

The LCOS Advantage

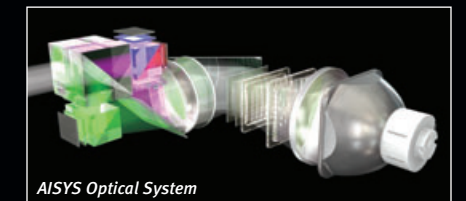
LCOS (Liquid Crystal On Silicon) Technology delivers the highest standard in projector image quality. Lattice-free, seamless photo reproduction and smooth, film-like quality

video are projected with realistic colors and intricate detail down to the smallest text. Thanks to the fast response time of LCOS panels, high definition video leaps off the screen with impressive quality and integrity. The advantages of LCOS are easy to see for presenter and audience alike: images and video with rich color, deep contrast and sharp resolution.



The AISYS Optical Engine

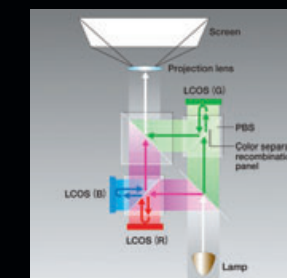
Canon's proprietary AISYS Optical Engine enhances image quality by maximizing the performance of the LCOS panels and equalizing light from the projection lamp. This results in notable brightness, high contrast and exceptional color reproduction.



Designed for optimal performance at a minimal size, the AISYS Optical Engine allows for compact, lightweight, cost-effective projectors. Canon has continued to improve the optical elements incorporated into the AISYS optical engine. The uniformity of light has been enhanced to further optimize image quality, and the Polarizing Beam Splitters (PBS) (integral parts of the color separation and recombination system) have been redesigned to achieve more precise light control. REALiS projectors set an entirely new standard in bright, beautiful, high-definition, high-contrast images.

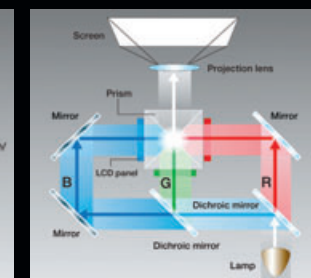
Comparing Technologies

LCOS Projector (Three-Panel)



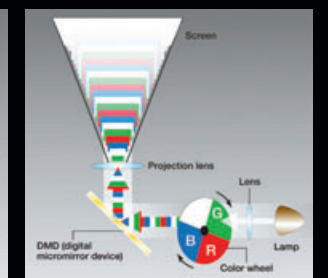
Light from the projector lamp is separated into red, green and blue, and then reflected from each of the three LCOS panels. The separated light is then recombined by the polarized beam splitter. Since the light is reflecting from the LCOS panels, there is virtually no "screen door" effect.

LCD Projector (Three-Panel)

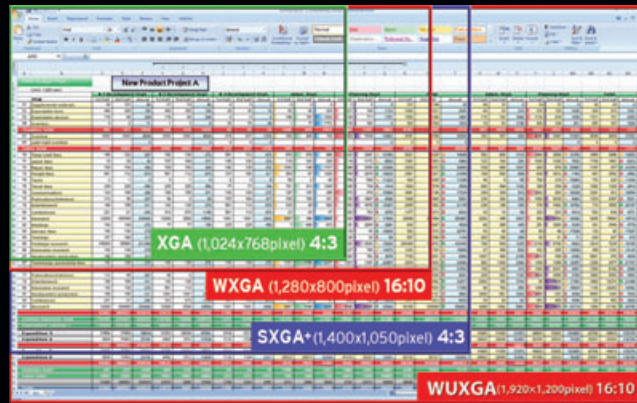


Light from the projector lamp is separated into red, green and blue, then passed through each of the three LCD panels. The separated light is then recombined by a prism. The light passes through the LCD panels as small dots, which tend to create a lattice-like pattern on the screen.

DLP Projector (Single-Chip)



A constantly rotating color wheel reflects red, green, blue, and white image components off a micro-mirror device to produce the projected image. The three primary colors are sequentially displayed and synthesized in the viewer's brain to produce images perceived as full color.



enhanced resolution allows accurate reproduction of even the most highly detailed images.

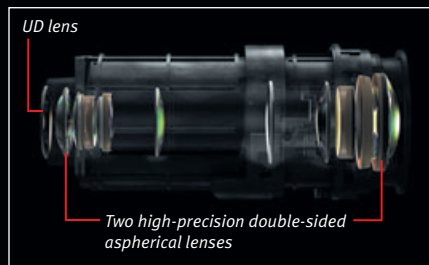
Optional Lenses for a Variety of Applications

The REALiS WUX4000 Series offers three interchangeable high resolution lenses. All three lenses have very low distortion,

making them ideal for installations requiring multi-stacking, multi-screen resolution. In addition to the standard 1.5x Zoom Lens, users can choose a Long Focus Zoom Lens or an Ultra Wide Angle Lens to cover a wide range of applications and situations. All three lenses feature advanced Canon aspherical lens element technology, which dramatically reduces overall lens size while maintaining optical performance. As a result, all three lenses are similar in size and fit in the same space on the projector. This enables rental and staging companies to ship REALiS WUX 4000 Series projectors pre-assembled with lens. Consultants will also have an easier time designing cost-efficient installations.

Genuine Canon Optics

Canon's REALiS Series lens configuration is a six-group assembly with 12 elements and four moving groups, featuring one UD lens and two high-precision double-sided aspherical lenses. The configuration not only delivers brilliant



clarity, but allows Canon to develop a WUXGA LCOS projector with superb brightness and image quality, in addition to flexible operational functions, all in a conveniently compact, cost-effective package. In fact, newer notebook PCs already support native WUXGA, an ideal solution for today's HD and Blu-Ray content.

Canon's 1.5x Powered Zoom Lens has been engineered to accommodate LCOS reflective LCD panels. And, with our new 10:0 lens offset, REALiS projectors can now be pulled back even further without the image hitting the table or the ceiling. This minimizes the need for keystone correction.

The 1.7 Powered Zoom Lens projects a diagonal screen size range of 40" at a distance of 3.9', and 100" at 9.8'. With a maximum screen size of 300", REALiS projectors adapt to virtually any size venue. The incorporation of a dual-sided aspherical lens in the optical array suppresses distortion and keeps peripheral image distortion to an absolute minimum. This

SX7 Mark II, SX60, and X700 projectors) enables the projected image size to be enlarged without increasing the distance



between projector and screen. It is an excellent problem solver for short-distance projection situations, such as in meeting rooms, and for rear-projection applications.

Motorized Lens Shift

Motorized lens shift, available on the WUX4000 D and WUX4000 projectors, enables the vertical and horizontal position of the projected image to be adjusted using the projector's control panel or remote control. Because the correction is performed by shifting the lens, the image can be raised or lowered and moved left or right without physically tilting the projector. This benefits installers who may have difficulty center-aligning the projector with the screen because of unforeseen obstacles. Moreover, unlike certain digital correction methods, lens shift does not degrade the image, so the quality of projected content remains uncompromised.

Proprietary Color Management

Canon Color Management System (CMS)
CMS ensures accurate color reproduction for an extended color space, while simultaneously compensating for color variances due to lighting differences. The result is true HD-quality color even in the toughest conditions. Professional image-makers can rely on REALiS projectors to deliver crucial color integrity.

Canon Throw Distance

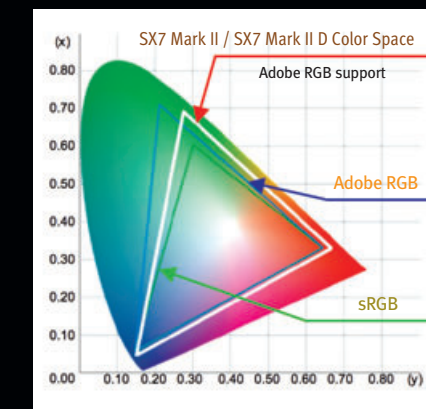
REALiS WUX4000 D, WUX4000 (1.5x Zoom Lens RS-IL01ST)							REALiS WUX10 MARK II D, WUX10 MARK II						
Projection Image Size	40"	80"	100"	150"	200"	300"	Projection Image Size	40"	80"	100"	150"	200"	300"
Projection Distance	Wide 1.3'	2.6'	3.2'	4.8'	6.4'	9.6'	Projection Distance	Wide 3.9'	7.9'	9.8'	14.8'	20.0'	29.9'
	Tele 3.2'	3.9'	4.8'	7.2'	9.6'	14.5'		Tele 5.6'	11.5'	14.4'	22.0'	29.2'	-
REALiS WUX4000 D, WUX4000 (Long Focus Zoom Lens RS-IL02LZ)							REALiS SX7 MARK II D, SX7 MARK II, SX60, X700						
Projection Image Size	40"	80"	100"	150"	200"	300"	Projection Image Size	40"	80"	100"	150"	200"	300"
Projection Distance	Wide 1.9'	4.2'	4.7'	7.1'	9.5'	14.2'	Projection Distance	Wide 3.9'	7.9'	9.8'	14.8'	19.7'	29.5'
	Tele 3.2'	7.2'	8.0'	12.1'	16.1'	24.2'		Tele 5.9'	11.5'	14.4'	21.7'	29.2'	-
REALiS WUX4000 D, WUX4000 (Ultra Wide Angle Lens RS-IL03WF)							REALiS SX80 MARK II D, SX80 MARK II, SX800						
Projection Image Size	40"	80"	100"	150"	200"	300"	Projection Image Size	40"	80"	100"	150"	200"	300"
Projection Distance	Fixed 0.7'	1.6'	1.7'	2.6'	3.4'	5.2'	Projection Distance	Wide 3.9'	7.9'	9.8'	14.8'	19.7'	29.9'
								Tele 5.6'	11.5'	14.4'	21.7'	29.2'	-

Rich Blacks

Precise control prevents the excess leakage of light, producing rich, detailed gradations even in the shadowed portions of images. Depth and dimension are reproduced with all the drama and realism of the source material.

Adobe RGB Color Match System

Proprietary color filters incorporated into the ALSYS optical system deliver exceptional accu-

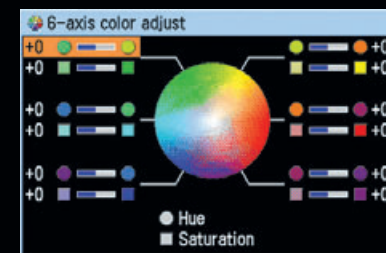


The REALiS SX7 series supports Adobe RGB color space.

racy and detail in both Adobe RGB and sRGB modes. This is ideal for professional photography, design, publishing, printing and fine art, where color integrity is key.

6-Axis Color Adjustments

REALiS projectors offer a 6-Axis Color Adjustment function that allows both hue and saturation adjustments independent of RGB and CMYK color axes. This feature is ideal for professionals with very demanding color requirements.



Fine tune adjustments to color can be made with the color adjustment function.

Image Modes

WUX4000 D PC WUX4000 AV	Standard	Movie	Movie & Photo	Vivid Photo	Adobe RGB	sRGB	Photo/sRGB	Home Cinema	Photo Image	User Setting 1-5	DICOM Simulation	Dynamic	Video	Cinema
----------------------------	----------	-------	---------------	-------------	-----------	------	------------	-------------	-------------	------------------	------------------	---------	-------	--------

Standard Prioritizes reproduction of white, closely matching the image characteristics of the original

Movie Suitable for displaying theatrical content; image quality emphasizes gradation in dark areas

Movie & Photo For display of video and digital camera images; clearly defines gradations and improves color reproduction

Vivid Photo Emphasizes the vividness of colors. Suitable for viewing in a somewhat darker room.

Adobe RGB Reproduces colors in the appropriate color space for accurate projection of content produced in specific standardized formats

sRGB Reproduces colors in the appropriate color space for accurate projection of content produced in specific standardized formats

Photo/sRGB Reproduces colors in the appropriate color space for accurate projection of content produced in specific standardized formats

Home Cinema Controls brightness while enhancing contrast to a ratio of 2000:1; for display of theatrical content in pitch-dark rooms

Photo Image provides highly precise color temperature and

User Setting 1-5 Users can register up to 5 types of combinations of settings of image quality into memory for future use.

DICOM Simulation is used to produce high-resolution images with twenty-one different levels of grayscale gradation. Available on select models only.

Dynamic Suitable for viewing visual software (moving pictures) in a somewhat brighter room.

Video Suitable for viewing video taken with a video camera and similar video in a somewhat darker room.

Cinema Suitable for ordinary visual software (video). Mode allows viewers to easily enjoy the atmosphere of a movie theater in a dim room.

Versatile Performance

Screen Aspect Modes

Canon REALiS projectors operate in both 4:3 aspect ratio and 16:9 aspect ratio to work perfectly with either screen format.

16:9 Digital Image Shift



WUXGA models display native 16:10 aspect ratio, providing unaltered display of high-resolution 1920 x 1200 data and video content. The true proportions of the source image are thus maintained on the screen, just as it would appear on a computer monitor.

Dynamic Gamma

With Dynamic Gamma in operation, gamma is automatically adjusted to optimum values. This feature is vital for projecting rapidly moving images. Each frame is displayed with optimum contrast balance to prevent washed-out whites and blocked-up blacks.

AC Projector Lamp

REALiS projectors feature AC lamps that boosts the purity of projected reds and greens. AC lamps offer long life and are 15 percent brighter than DC lamps. Moreover, AC lamps not only ensure more vivid images, but also deliver better value.

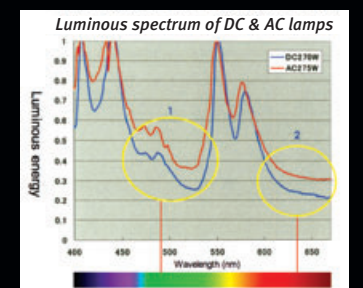
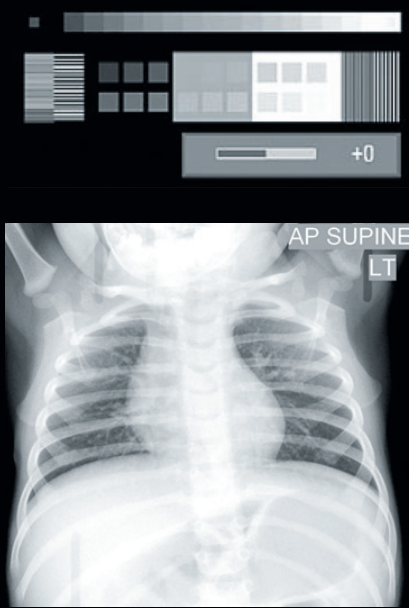


Image Modes

The numerous Image Modes on REALiS projectors can be used alone or in combination to optimize the display. The modes enhance the viewing experience based on the source content, and also compensate for the lighting conditions of the room.

Photo Image Mode

To compensate for the effects of ambient light on color projections, select REALiS projectors offer different types of Photo Image Mode. The mode allows precise adjustments in color temperature and color level, for faithful reproduction of color on-site regardless of lighting conditions.



DICOM Simulation Mode

The DICOM Simulation Mode available in select REALiS "D" projectors is ideal for those in the medical education field. Images such as X-rays, CAT scans and MRIs can be faithfully projected in a clear gray scale tone similar to the DICOM (Digital Imaging and Communications in Medicine) standard. 21 tone settings allow users to accommodate various ambient lighting conditions.*

*REALiS "D" models are not diagnostic projectors and should only be used for educational purposes.

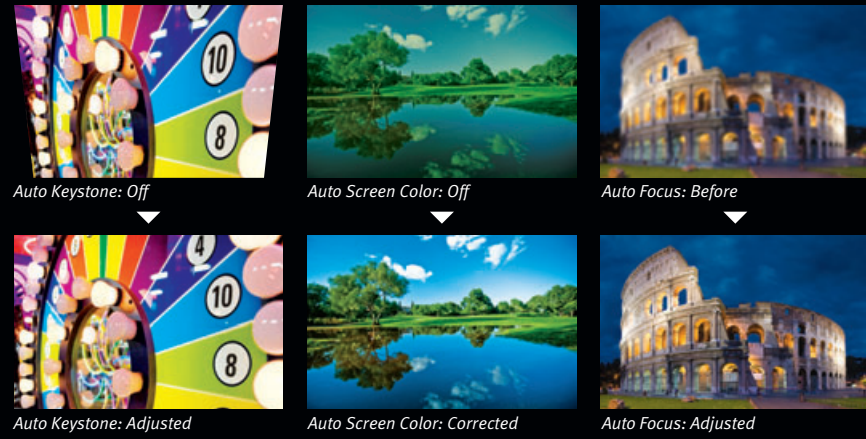
Presenter-Friendly Use

Quiet Operation

Projectors generate heat, and typical cooling mechanisms can be very distracting during presentations. REALiS projectors, however, are specifically engineered for noise prevention. From the ventilation system to the cooling fan to the layout of the optical array, the design of each element contributes to the unit's exceptionally quiet operation.

LED Input Illumination

When several image input devices are connected, an LED conveniently indicates which image

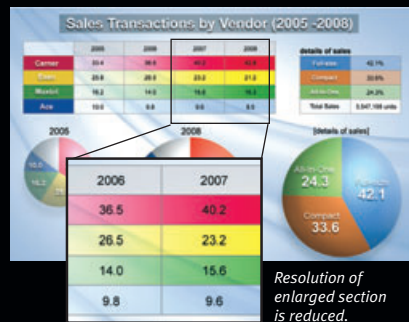


signal is selected as the input. The LED illumination on the operation panel flashes to indicate start-up, end of presentation and various other commands.

Remote Control

Flexible remote control features enable presenters to highlight their points or pause the presentation from anywhere in the room.

- **Digital Zoom** enlarges a selected single area of the screen, e.g., specific data in a graph; images can be enlarged up to 12x.



- **Spot highlights** a portion of the image on the screen; the spotlight can be made larger or smaller or moved anywhere on the screen.



- **Freeze** freezes the current on-screen display for pauses in the presentation such as changing PC connections or checking the subsequent image file.

Auto Setup

These smart features make preparing for a presentation quick and easy. Just press the Auto Setup button and within seconds the input source is connected, distortion is corrected, focus is sharpened and color is balanced.

- **Auto Keystone** automatically calculates the angle of the projector and corrects for image distortion: vertical (+/- 20°).
- **Auto Input** automatically detects and identifies the image signal from the input terminal and selects it for display.
- **Auto Focus** automatically measures the distance to the screen using an infrared sensor, and focuses the projection in as little as one second.
- **Auto Screen Color** automatically adjusts the color balance according to the projection surface's color, e.g. a green chalkboard. (Not part of the default settings.)

Guide Functions

All REALiS models display guide messages in an on-screen window, providing setup tips and helpful feedback on invalid operations.



Guide function display

Direct Power On

REALiS projectors can be switched on and off from a central control terminal without the need to touch the unit directly. This permits remote operation when the unit is mounted overhead. With the Direct Power setting on and power introduced, the projector starts up automatically and is ready to display in approx. 20 seconds.

Off and Go

REALiS projectors are equipped with a built-in condenser that runs the cooling fan. This makes it possible to simply unplug the projector, pack it up and go immediately, while the unit continues to cool down.

Outstanding Connectivity and Compatibility

Network and Serial Capability

REALiS multimedia projectors provide both an RJ-45 network port and an RS-232C serial port. By plugging in an Ethernet cable into the projector's RJ-45 network port, users can manage one or several projectors locally and remotely from any PC connected to a network. The RS232-C serial port offers connectivity with industry-standard control systems, such as those by AMX, Crestron, and Extron, simplifying installations with other devices. (The SX60 and the X700 require an optional network adapter to operate the projector from a networked PC.)

Flexible Compatibility

REALiS multimedia projectors are compatible with a variety of image signals, including HDTV.

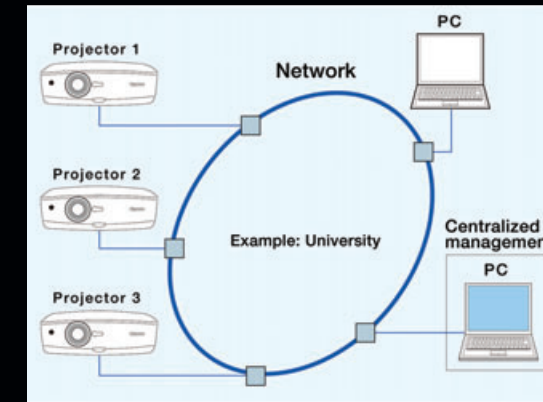
Audio Input & Output

Audio input source will switch automatically to match the image signal source. Audio output terminals permit connection to external audio devices, making it easy to control sound levels from the projector's remote control unit.

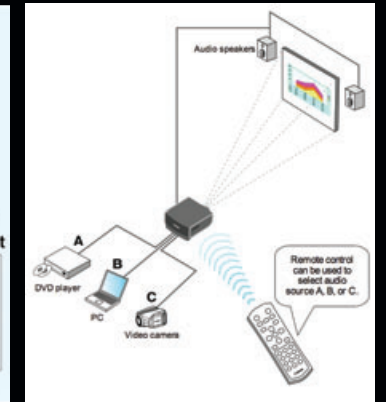
PC-Free Presentations

Convenient built-in interfaces make it easy to share media not resident on a PC. Connect a USB memory stick directly into the projector, or a PictBridge compatible digital camera via USB

Network Management Diagram



Audio Input & Output Diagram



cable for PC-free presentation. (Only JPEG images can be displayed using a USB memory stick. Only the SX80 Series projectors support PC-free presentation.)

Customer First

Kit Contents & Optional Accessories

REALiS projectors come with everything needed to begin giving compelling presentations right out of the box. To increase the performance value of a REALiS projector even further, Canon has developed several smart accessories.

"Triple P" Program

Canon's Projector Protection Program, also known as "Triple P," is a service program that provides a loaner projector of equal or greater quality in the event that a repair must be made.

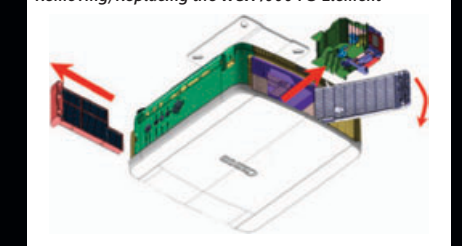


- Free to any buyer within the 3-year new product limited warranty
- Canon Customer Support Center toll-free hotline: 1-800-828-4040
- Customer Service Hours: 8 a.m. to midnight, Monday - Friday and 10 a.m. to 8 p.m., Saturday EST
- For next business day delivery of loaner projector(s), a Customer Activation Form must be received by Canon Customer Support Center by 3 p.m. EST (Monday - Friday)
- Customer must provide a valid credit card as

Ease of Installation and Maintenance

With dimensions of 14.96" W x 16.92" D x 6.69" H and a weight of 18.7 lb., the REALiS WUX4000 Series is easy to install in a wide variety of applications. The projector has been designed with intelligently located, easily accessible consumable parts to enhance both flexibility in mounting and ease of maintenance. The projector's lamp and filter can be replaced from the back/side, and the PS element can be replaced through the top of the projector.

Removing/Replacing the WUX4000 PS Element



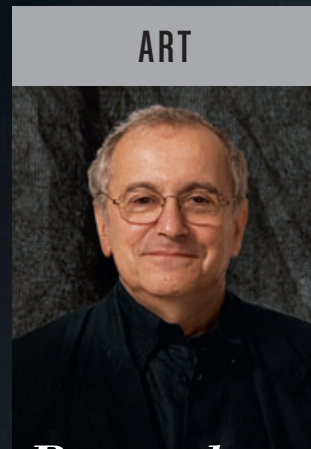
- Because of constant exposure to lamp heat, the optical block of a projector breaks down in time.
- Replacing an LCD projector's optical block could cost as much as buying a new projector.
- Canon's PS optical filter element can be changed by an authorized service dealer or at a Canon service facility for a fraction of the cost, restoring the color output of the projector to near-factory condition.

PHOTO PRINTERS

The Featured Professionals

The Canon Total Imaging Solution: The Professional's Choice.

These professional photographers depend on Canon for their total imaging solution from composition through final prints. Canon innovation speaks directly to their needs and desires for better tools. Canon's leadership in imaging technologies and uncompromising quality standards have delivered a wide range of tools that include the EOS System of cameras, lenses and a host of accessories. Today, the Canon system also addresses the photo printing needs of today's digital imaging professionals. Already redefining output quality and performance in fine art and commercial applications, Canon imagePROGRAF and PIXMA Pro inkjet printers are setting new standards in professional workflows. From individual vision to print, professionals now count on Canon for the finest in image capture and presentation.



Ryszard Horowitz

Explorer of Light

Capturing Fantasies

One of the youngest known survivors of Auschwitz, Poland-born Ryszard Horowitz would grow up to have his photography exhibited, published and collected around the globe, and has been awarded every major accolade that can be bestowed on a photographer. Inspired by 19th-century "ghost photographers," Horowitz depends on Canon professional printers to seamlessly produce his pioneering special effect and multi-image photography, and to keep his signature artistic style intact from initial conception to final display.



Bruce Dorn

Explorer of Light

The Photo Impressionist

When illness temporarily forced photographer Bruce Dorn to experiment with other artistic mediums, little did he know he would go on to be simultaneously recognized as a Canon Explorer of Light, Corel Painter Master and avid large format printer. Now a respected mixed-media artist — he won the venerable Kodak Professional Innovators Award for his digital mixed-media images — and member of the Director's Guild of America, Dorn taps Canon professional printers to work in perfect sync with digital painting software to render superlative works of art.



Vincent Isola

Explorer of Light

The Total Canon Workflow

As owner and principle photographer for the California-based Genesis Digital Learning Center and Genesis Photography studio, respected photographer Vincent Isola includes powerful Canon printers in his lab. Printers are an integral part of the modern photographer's workflow, and the award-winning Isola, known equally for his stark monochromatic work and lush, color-filled images, depends on a completely Canon-to-Canon system, from camera through to printer, to reproduce a scene faithfully and professionally.

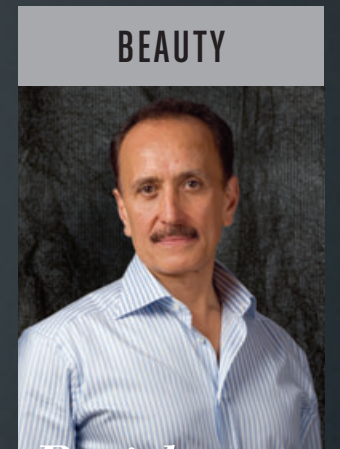


Tyler Stableford

Explorer of Light

Any Subject, One Printer

Tyler Stableford is an adventure photographer who captures images from coal mines deep inside the Earth to F16s soaring over Colorado. Equally adept at capturing the emotional landscape of post-war veterans or outdoor catalog shots for companies like Gore-Tex, professional photographer Stableford prints his portfolio in-house so as to oversee the entire photographic process, from image capture to final print. The recipient of numerous photo awards, Stableford uses Canon Large Format Inkjet Printers and professional Canon pigment ink technology to accurately capture the hyper-saturated colors and deep shadows that make his renowned images burst from the page.



Parish Kohanim

Explorer of Light

The Dance of Colors

Known for his elegantly subtle, brilliantly colored images, the Iran-born, Atlanta-based Parish Kohanim's masterful use of hues and tonalities bespeaks of his passion for the vibrant beauty of life. Advertising agencies, design firms, and Fortune 500 companies, IBM, AT&T, Coca-Cola, DeBeers and more dot his resume, and he collaborated with Cirque du Soleil for his book, *Luminosa*. Canon professional printers, able to print on a wide range of mediums, from gloss to canvas, lend fine-art polish to his fantastical work.

BEAUTY



Stephen Eastwood

Explorer of Light

Images Made to Amaze

Model turned self-taught photographer, Stephen Eastwood does much of his client proofing on Canon imagePROGRAF printers. Ranging from Graphic Arts Printers, MFP Imaging Systems, and general-use printing, Canon state-of-the-art large format printers use the LUCIA EX ink set for long-lived, practically grainless results with smooth gradations. They produce the lusciously high-end fashion, haute couture-styled glamour images for which Eastwood is known, rendering accurate highlights, shadow and color for maximum impact.

NATURE



George Lepp

Explorer of Light

The Right Tools for the Job

Professional photographer and avid large format printer, George Lepp considers his Canon imagePROGRAF printers as much a part of his creative process as his camera. The new Canon printers offer a full range of creative tools to render any photographic vision at the highest possible quality, including software that offers fine control over contrast and image detail to create standout images. With work spanning huge, multi-image panoramic nature shots to intimate, soft-focus portraits, Lepp taps the creative range of Canon image tools to exactly manifest his mind's eye.

WEDDING/PORTRAIT



Parker Pfister

Explorer of Light

Finding the Soul of the Image

One of the country's most highly regarded wedding photographers, award-winning Parker Pfister — known in the industry as “Parker J” — shoots with a finished product already pictured in his mind, and favors a relaxed, vintage look. Constantly evolving with new hardware, software and style, the North Carolina-based Pfister relies on a myriad of Canon professional printing technologies to render images that have not only eye appeal, but also their own personality and the soul he strives to catch.

PORTRAIT



Sandy Puc'

Explorer of Light

Timesaving Technology

In addition to being an Explorer of Light, Sandy Puc' also currently serves on the Board of Directors of the Professional Photographers of America. Assisting photographers through her educational website, Sam's World University, and overseeing her own studio, Puc' values the timesaving aspects of Canon professional printers to make her workflow smooth and efficient. Easy integration into standing operating systems is just one example of the dedication to professionalism Canon pursues.

BEAUTY



Robert Farber

Explorer of Light

Creating a Digital Darkroom

Canon professional printers allowed Robert Farber, who has been exhibited in Japan, Europe, as well as the United States, to directly control his workflow by producing gallery-grade photos on-site in his studio. For Farber, fine art limited prints have been a refreshing turn on his investment: Meticulous droplet placement technology and fade-resistant Canon LUCIA pigment ink accurately reproduce the subtleties of shadowing and gradation of colors, so Farber, founder of Photoworkshop.com, one of the most visited educational photography sites on the Internet, can realize his artistic goals from start to finish.

BEAUTY



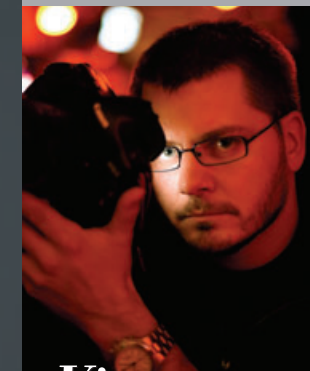
Eddie Tapp

Explorer of Light

The Technology Professionals Rely On

A tireless educator for professional photographers and a prominent figure in the world of digital imaging, Eddie Tapp, a Photoshop Hall of Fame member, is widely recognized as an authority on workflow and digital color management. Observing that many labs have switched over to wide format Canon printers for their outstanding quality and high speed printing performance, Tapp also notes that he has never had to replace the heads or had any issues with clogging on his Canon printers.

PHOTOJOURNALISM



Vincent Laforet

Explorer of Light

Quality Prints on Demand

Vincent Laforet, a three-time winner at the prestigious 2010 Cannes Lions International Advertising Festival, is a director and Pulitzer-Prize-winning photographer known for his forward-thinking approach to image making and storytelling. At first averse to inkjets, Laforet found that Canon professional inkjet printers can not only produce high-quality prints of darkroom grade or better, but produce them quickly for waiting clients. That Canon technology can produce fine art, limited edition prints has only furthered Laforet's presence in the industry.

SMALL PRODUCT



Michel Tcherevkoff

Explorer of Light

Images on the Large Scale

With a career spanning more than thirty years, Michel Tcherevkoff taps Canon professional large format imagePROGRAF printers to reproduce his playful, signature images to sizes 40 inches by 80 inches and up, with rich color and smooth gradients. With Ink reservoirs, which allow the printer to continue a job while ink cartridges are switched out, and LUCIA archival inks designed to last for at least 100 years, Canon professional printing technology is designed to make workflow seamlessly easy.


 imagePROGRAF
iPF9100

“I simply love to be in control of my images from their inception to presentation.”

As a former painter, I always pay the highest attention to the detail and color quality in my work. The symbiosis of my Canon EOS Digital camera and imagePROGRAF iPF9100 printer comes as close to painting as I could have ever imagined. The high quality and resolution I capture with my camera is exactly what I get on paper...and I get superb color quality with amazing consistency and speed. What would have taken me days to accomplish in the past, I can now achieve in a matter of hours.

— Ryszard Horowitz
Explorer of Light



Reliable, Efficient, Versatile

Exclusive Canon L-COA Image Processor

Canon's exclusive L-COA (Large format printer Common Architecture) image processor is the “brains” of the imagePROGRAF printer engines. Sophisticated algorithms and high-speed processing ensure rapid printing with the highest precision. Multiple tasks are processed on-board with simultaneous, parallel operation to ensure the most efficient processing of large amounts of data, ensuring the highest printing speed, highest output quality, and consistent color at all times.



Internal 80GB Hard Drive

The iPF9100, iPF8300 and iPF6350 each have a built-in 80GB hard disk drive to buffer and store print jobs. It frees up the host computer more quickly for other tasks. Multiple copies and reprints do not require the resending of data from the host computer. The printer can even perform unmanned overnight output of multiple jobs after the host computer has been shut down.

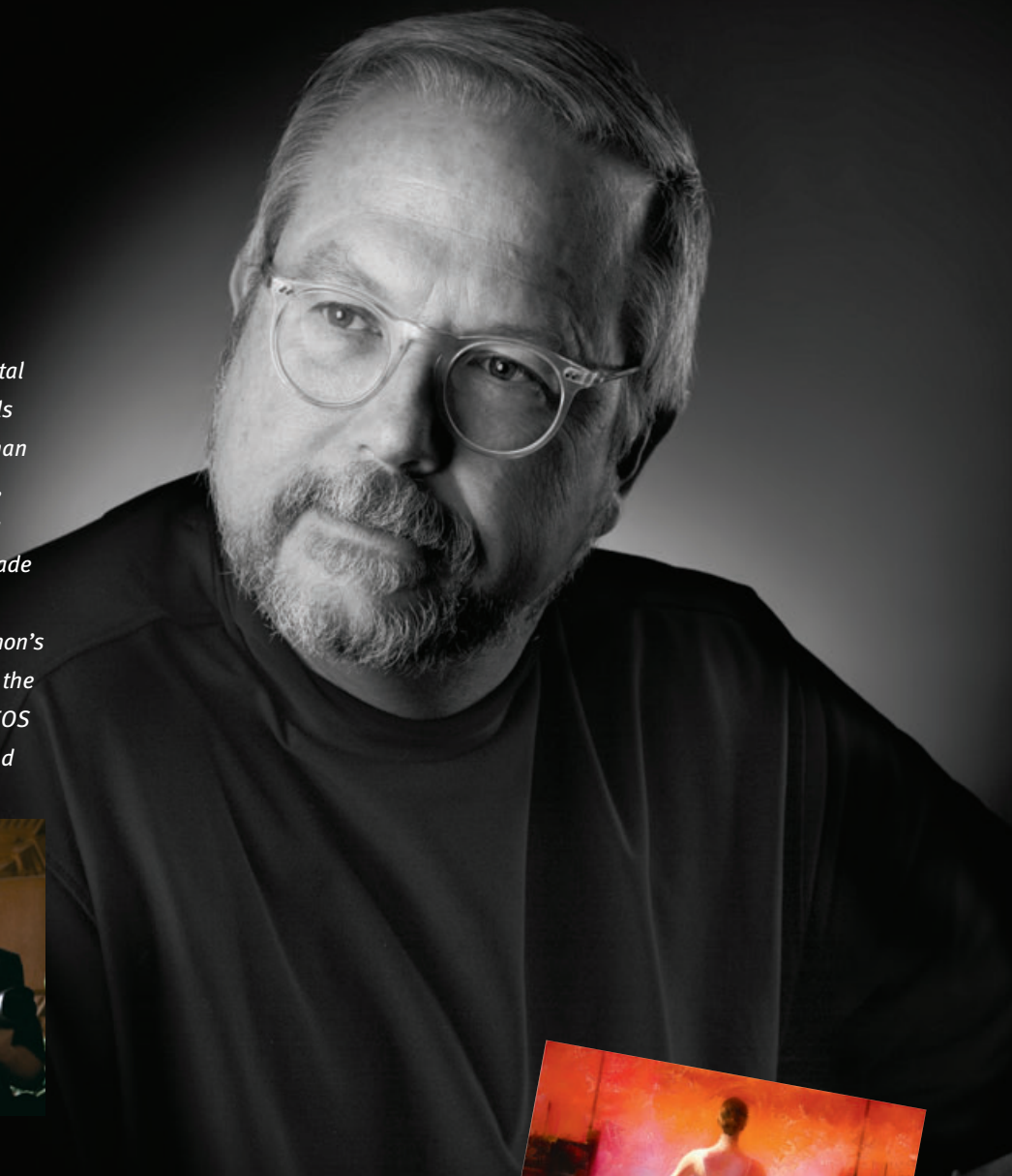




“Show big, sell big. Let your needs, not the limitation of your printer, dictate size.”

Like musicians with their instruments, digital artists must achieve ‘oneness’ with the tools we wield. For my purposes, none are finer than those offered by Canon. The iPF9100 is fast, consistent, reliable, and happily works on a seemingly limitless variety of commercial grade and fine art media. It’s capable of covering immense acreage in very short order. With Canon’s philosophy of technological synergy across the company’s entire product line, from Canon EOS Digital SLR cameras to REALiS projectors and professional printers, digital artists can finally be assured that their vision will flow smoothly from inspiration to final realization.

— Bruce Dorn
Explorer of Light



Fast, High-Precision Output

FINE Dual Print Head Technology

Canon’s FINE (Full-photolithography Inkjet Nozzle Engineering) ultra-high-density print head technology uses the latest semiconductor manufacturing techniques to guarantee the highest precision and consistency. It ensures large-format output of exceptional detail and tonality while delivering higher printing speeds.



Moreover, unlike conventional inkjet printers with single print heads, the imagePROGRAF printers employ an innovative dual print head design. Each print head has 15,360 nozzles, yielding over 30,000 nozzles. This not only makes extremely high output resolution possible, but also ensures more reliable printing at even faster speeds. The iPF9100 with its 60-inch wide carriage, for example, can output a full 36” x 48” color print in approximately five minutes.




 imagePROGRAF
iPF8300

“The iPF8300 is twice as fast and has a larger, smoother color gamut than any other printer I’ve used.”

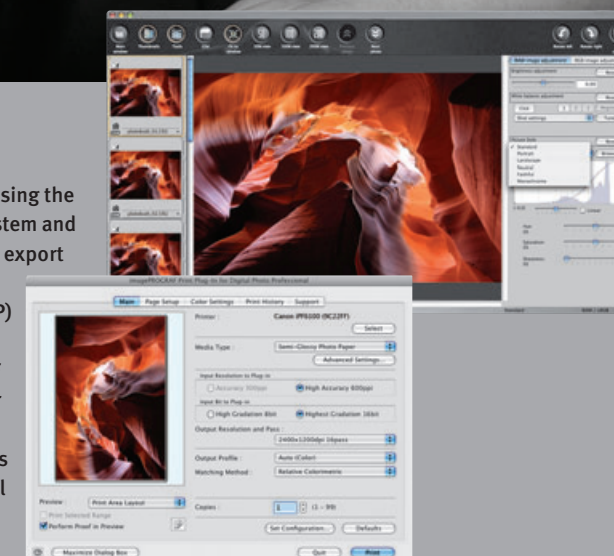
In today’s competitive market, a complete color-managed high-efficiency workflow from capture through output is a must. I shoot my Canon EOS Digital SLR camera RAW and work in 16-bit color. With the iPF8300, I can now maintain that high-bit-depth workflow without having to “dumb down” the image to 8 bits for the printer. Of course, I am still a visual person, and there are times “perfect,” profile-matched color is not what I want. The Canon export module lets me make changes, just like I used to in the dark-room, without altering my original file. And I can easily catalog all of my settings for consistency and repeatability.

— Vincent Isola
Explorer of Light



Uncompromised High-Speed Output

Canon engineers created ingenious export modules for imagePROGRAF prints, bypassing the operating system’s 8-bit restriction. The export module circumvents the operating system and is designed with a much more intuitive interface than printer drivers. Because the export module is independent from the operating system, it uses only Canon optimized algorithms resulting in higher quality prints. Canon Digital Photo Professional (DPP) software offers numerous output enhancement features, such as layout templates, Soft Proof and Real Preview. Using DPP with Canon’s export modules for imagePROGRAF printers allows 16-bit processing from DPP and Adobe Photoshop CS/CS2/CS3/CS4 for true wide-dynamic-range workflow options from capture to output. Due to Automatic Color Stability Control, color is truer and smoother, print after print, even pale colors or pastels. Calibration takes less than 10 minutes and is automatically applied to all supported media types and print modes.





imagePROGRAF
iPF6350

imagePROGRAF
iPF6350

“Thanks to the imagePROGRAF iPF6350 I’m making the best prints of my career!”

Canon’s new imagePROGRAF iPF6350 continues to amaze me. Not only can I switch effortlessly from Photo Black to Matte Black inks, but my prints have an exceptionally wide gamut — in both color and black-and-white. The imagePROGRAF iPF6350’s new black-and-white ink set creates deep, rich shadows without blocking, and prints impressively detailed highlights. I’m making the best prints of my career!



— Tyler Stableford



Extraordinary Black-and-White Prints

Superior Grayscale Reproduction

The imagePROGRAF printer LUCIA EX ink set uses three levels of black ink (Black/Matte Black, Gray and Photo Gray) to reproduce grayscale images. As a result, black-and-white images are reproduced with smooth, natural gradations and excellent highlight detail. These inks also assure an exceptionally high D-Max to produce crisp images with outstanding contrast.

Conventional inkjet printers must use color inks when printing black-and-white images because using black ink alone would result in grainy prints that exhibit poor tonality and reduced detail. The LUCIA EX ink set greatly reduces dependence on color inks for grayscale output, virtually eliminating metamerism and unwanted tinting.

LUCIA
ink






 imagePROGRAF
iPF6300

“The iPF6300 gives me prints of the highest photographic quality... beyond anything I have ever used before.”

I shoot a wide variety of images with my Canon EOS Digital SLR cameras. Some have brilliant, saturated colors; others have dramatic, high-contrast blacks and whites; still others have subtle, pastel colors. The iPF6300, with its spectacular wide-gamut printing capability, reproduces all of my images beautifully and effortlessly. I am in the business of selling fine-art color and B&W prints, and the iPF6300 is just what I need. I can print on a wide variety of media, including fine art paper and canvas, with breathtaking quality, consistency, and efficiency. And the iPF6300's archival LUCIA EX ink set ensures that my prints will maintain their brilliance and subtlety well into the future.

— Parish Kohanim
Explorer of Light

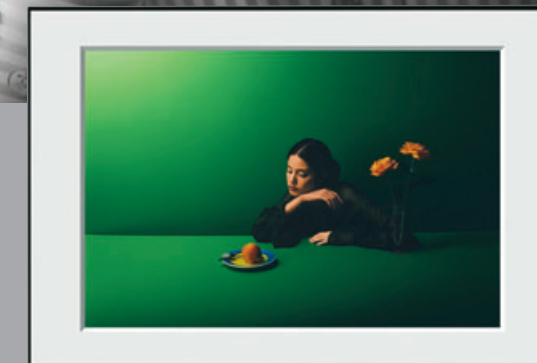


LUCIA EX Pigment Ink System

Improved Scratch Resistance

The new LUCIA EX ink provides photographers 12 scratch- and fade-resistant color inks. With the ability to precisely achieve their desired results by producing more expressive and crisp blacks, smooth color gradations, LUCIA EX has the capability to reproduce the finest details even in the shadowed areas of photographs.

LUCIA EX pigment inks exhibit excellent short-term color drift (“dry-down”) behavior, which is critically important for color-managed workflows and in proofing applications. Resistant to damage from atmospheric ozone, LUCIA EX inks are well suited for urban environments where prints might be displayed unframed and exposed to ambient indoor air.



 LUCIA
ink



“The iPF6300 allows me to concentrate on the creative process to get the look and expression I want.”

In my work, accurate and pleasing skin tones are a necessity, not a luxury. Because my style ranges from deep shadows, vibrantly saturated colors and rich skin tones to pale high-key images, most printers fall short of reproducing the full tonal range. The Canon iPF6300 faithfully gives me the full spectrum recorded by my Canon EOS Digital SLR camera, enabling me to convey the exact mood and feel of the shot. Its fast output speed is also a decided plus. Being able to print accurate and punchy colors, deep blacks and rich skin tones in record speed for a client is a sales tool in and of itself.

— Stephen Eastwood
Explorer of Light



Precision Output with Reduced Grain

Smoother Skin Tone

The Canon LUCIA EX pigment-based ink system is regarded as the most advanced, wide-gamut ink set developed for digital printing. The LUCIA EX ink set used in the imagePROGRAF iPF6350 and iPF6300 features 12 reformulated inks. Combined with optimized ink delivery algorithms in the processor, they ensure precise dot placement and even dot patterns. And results are excellent reproductions of gradations with nearly invisible grain.

LUCIA
ink




 ImagePROGRAF
iPF5100

“The essence of nature photography is to capture color, detail and form that engage and inform the viewer.”



From intimate studies of flowers to vast panoramic landscapes, the iPF5100 gives me fast, large, dramatic, vividly colored prints that show off the superb image files I capture with my Canon EOS Digital SLR camera. The superb LUCIA ink set gives me more detail in the saturated colors with greater consistency, rendering truer images than previously possible. Equally important to me is the knowledge that Canon’s professional cameras, lenses, and printers offer, throughout the process, a consistent level of quality unsurpassed in the industry. I know that my Canon equipment is able to produce the best photographic images possible today.

— George Lepp
Explorer of Light



Spectacular Color, Superb Tonal Detail, Archival Quality

Canon’s LUCIA Pigment Ink Set

In addition to traditional Cyan, Magenta, Yellow, and Black inks, the Canon LUCIA set includes Photo Cyan, Photo Magenta, Red, Blue, Green, Gray, Photo Gray and Matte Black inks. The Red, Green and Blue inks significantly improve saturation levels for the additive primary colors: Whereas typical inkjet printers are limited to a color gamut more closely associated with the smaller sRGB space, Canon imagePROGRAF printers with LUCIA inks deliver a color gamut very close to (and, in some instances, exceeding) the wider Adobe RGB space. And because the LUCIA ink set is based on pigment ink technology, prints are fade-resistant, ensuring long-lasting brilliance.


 LUCIA
ink


Canon RC Photogloss L=50





“The iPF5100 makes the only prints I have seen that represent my exact vision.”

I push my imagery to extremes. I see the image I want to produce in my mind right before the shutter falls on my Canon EOS Digital SLR camera. Thus, I know exactly how the final image will look even before I release the shutter. Most of the time it will be at an extreme end of a spectrum. For the longest time, I searched for a digital imaging printer that could accurately reproduce or surpass the best of traditional photographic printmaking. With the Canon iPF5100, my search is over.

*Turn on the lights!
I am steppin' out
of the darkroom!*

*— Parker Pfister
Explorer of Light*



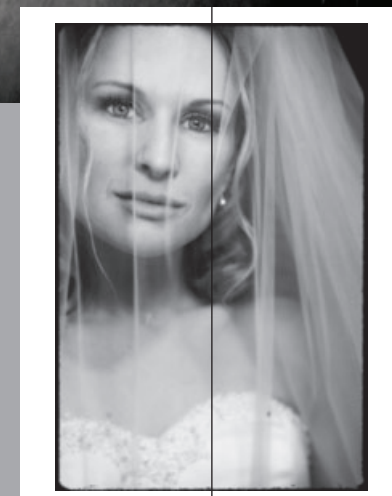
Extraordinary Print Quality

Improved Ink Formulations

The LUCIA ink set comprises Gray and Photo Gray inks that assure even smoother, more accurate gradations from gray to dark gray to black. The LUCIA inks are renowned for their ability to reproduce tonal detail, significantly reducing graininess and bronzing.

Reduced Bronzing

Depending on media type and image content, an inkjet print may exhibit bronzing accompanied by an iridescent surface luster. While bronzing is noticeable only at acute viewing angles, reducing the effect produces unmistakable improvement in print quality. Canon has successfully reduced bronzing in the LUCIA ink system with a proprietary binding polymer technology. Printed images are more vibrant and better reveal subtle detail.



With Gray Ink

Conventional Ink System

“I can now focus on what I do best and leave the printing to the experts at Canon.”

Running a busy studio with 25 employees does not leave me much time to worry about handling the technical side of a printer. Color management and file preparation can be difficult skills to master, but Canon has managed to make the entire workflow clear-cut and almost effortless. The iPF5100, in particular, has been the perfect solution for my studio. This user-friendly printer has opened new doors for us, enabling us to generate more creative products that our clients just love to purchase. And I can depend on the iPF5100 for the same clean, consistently superb image quality I have come to expect from my Canon EOS Digital SLR cameras, and prints delivered to our clients in a timely manner.

— Sandy Puc'
Explorer of Light



Superb Reproduction of Image Detail

Precision Ink Delivery System

The LUCIA pigment-based ink set used in the Canon imagePROGRAF iPF5100 features reformulated Black inks and re-optimized ink delivery algorithms. Grain is less visible and image detail is rendered with extraordinary precision across the entire tonal range.

The Unparalleled Canon-to-Canon Workflow

Designed to integrate effortlessly into professional workflows, the Canon total imaging solution includes powerful software tools that enhance creativity and productivity. The sophisticated imagePROGRAF print drivers fully support ICC-profile-based color management under both Windows and Macintosh operating systems. Shoot with Canon EOS Digital SLR cameras and take full advantage of the wider Adobe RGB color space from capture to print. Use the advanced export module for direct printing of 16-bit images to implement a true wide-dynamic-range workflow option. The possibilities are practically limitless.



 **PIXMA** Pro9500 Mark II
Photo Printer

“I depend on the PIXMA Pro9500 Mark II to reproduce every nuance and convey the mood and emotion of my images.”

The images I produce with my Canon EOS Digital SLR camera are monochromatic and subtle, and that makes them a challenge for any reproduction process. I had been disappointed by inkjet printers and relied almost exclusively on traditional photographic printing. I wondered whether the promise of the ‘digital darkroom’ would ever come true for me. The Canon PIXMA Pro9500 Mark II was the answer I had been waiting for. With its unique LUCIA ink set, the Pro9500 Mark II reproduces tonal gradations I thought I’d never see in inkjet prints. The prints I make with the Pro9500 Mark II are truly ‘gallery grade’—not only because of their image quality but also because they won’t fade with time.

— Robert Farber
Explorer of Light



Stand-out Grayscale Reproduction

Fine Tonal Gradations

The PIXMA Pro9500 Mark II features a 10-color pigment ink system based on the LUCIA set developed for the Canon imagePROGRAF professional printers. In addition to Cyan, Magenta, Yellow and Photo Black inks, the PIXMA Pro9500 Mark II ink set includes Photo Cyan, Photo Magenta, Red, Green, Matte Black and Gray. The availability of Gray ink in addition to Black (whether Photo Black or Matte Black) results in high-quality grayscale reproduction. Black-and-white images are smooth, with natural gradations, excellent tonal detail and reduced graininess.

Perfect for Fine Art Prints

With versatile dual paper paths, the PIXMA Pro9500 Mark II printer supports a wide range of output media, including specialty and fine art papers such as RC photo. Matte Black ink produces deep blacks with matte media; Photo Black ink is optimized for high-gloss surfaces. Photo and Matte Black inks are loaded at all times, and automatic switching between them saves time, ink and eliminates guesswork.





“The Pro9500 Mark II delivers the extraordinary color vibrancy and longevity I demand of my prints.”

Getting the color right the first time is the most important benefit for my workflow. The PIXMA Pro9500 Mark II, while being easy to use, gives me an exceptional degree of color control, which is a big plus for my kind of specialized imaging. Print quality and longevity are also critical in today's workflow. The Pro9500 Mark II's pigment-based LUCIA inks assure excellent archival characteristics and perform exceedingly well with a wide variety of media types. Along with the ability to reproduce the superb image quality I get with my Canon EOS Digital SLR camera, I'm impressed by the speed of printing, which helps boost productivity.

— Eddie Tapp
Explorer of Light



Exceptional Print Longevity

Excellent Archival Characteristics

Canon LUCIA pigment ink technology ensures long-lasting prints that are highly resistant to fading. The Pro9500 Mark II pigment ink set also exhibits excellent color stability with virtually no short- or long-term color drift—an important consideration in color-managed workflows.

Wider Color Gamut

The Pro9500 Mark II pigment-based 10-ink system includes dedicated Red and Green inks, which enables the reproduction of a much wider range of colors with superior tonal gradation. In particular, when compared to conventional inkjet printers limited to CMY inks, color reproduction is much improved in the yellow-to-orange, red, and green color ranges. Thus, whereas typical inkjet printers are limited to color gamuts more closely associated with the sRGB space, the Pro9500 Mark II enables photographers to work in the wider Adobe RGB space. As the Pro9500 Mark II software fully supports ICC-profile-based color-managed workflows, photographers get exceptional consistency and color accuracy in their prints.

LUCIA
ink



PIXMA Pro 9000 Mark II
Photo Printer

“Here, finally, is a printer that fits my demanding workflow without compromising image quality.”

The speed and reliability of my Canon PIXMA Pro9000 Mark II allow me to print dozens of images for portfolios in hours instead of days, which means I can print custom books for clients on demand. That’s incredibly valuable to my business. Print quality is exceptional. Even though the photographs I shoot with my Canon EOS Digital SLR camera have a high degree of saturation and contrast, I depend on details in the highlights and shadows to make my images stand out. Most printers fail when it comes to reproducing the extremes and the details, but not the Pro9000 Mark II. A fast, efficient printer that delivers the wide gamut and tonal precision I need to convey the punch and subtlety of my photographs...I can’t ask for more.

— Vincent Laforet
Explorer of Light



Engineered for Efficiency and Dependability

FINE Print Head Technology

The PIXMA Pro9000 Mark II features Canon’s exclusive FINE (Full-photolithography Inkjet Nozzle Engineering) print head technology, which delivers high-resolution at high output speeds. This high-density, high-precision print head releases highly uniform microfine droplets as small as 2 picoliters, delivering a maximum resolution of 4800 x 2400 dpi. The ability to accurately deposit thousands of ink droplets each second is highly refined and results in prints with sharper detail and less grain.



Versatile Dual Paper Paths

Dual paper paths accommodate a wide range of media types. In addition to the standard top-loading feeder, the PIXMA Pro9000 Mark II has a manual front-loading feeder that provides a straight paper path. This enables the use of large, non-standard paper sizes as well as thicker fine art and specialty media (up to 1.2mm).





“My camera and printer must help me achieve the WOW factor: Wonderful, Original Work. Thanks, Canon.”

My job is to make fresh, exciting images. The research and technology behind the Canon name may be invisible to those viewing my work, but I rely on them every day to realize my vision. We expect a lot from today's technology. Most equipment delivers 90% satisfaction, but I seek perfection. So I choose my tools carefully. The technology must fit my workflow and be totally reliable. And as my work is about color, my choices must make the big difference — brilliant colors, super sharpness and detail that make my images jump off the page. The PIXMA Pro9000 Mark II makes it happen for me.

— Michel Tcherevkoff
Explorer of Light



Designed for Imaging Professionals

8-Color Dye-Based Wide Gamut Ink Set

Canon's advanced 8-color dye-based ink system features Red and Green inks in addition to Cyan, Magenta, Yellow, Photo Cyan, Photo Magenta and Photo Black. This unconventional ink set reproduces a much wider color gamut than any previous dye-based inkjet printer, delivering a color space that rivals positive film. In particular, red-region saturation is increased by approximately 60 percent, and green-region saturation is increased by approximately 30 percent. Moreover, the dye-based ink set delivers the vividly brilliant colors and high-gloss/high-luster finish desired by many photographers.

Superior Print Longevity

ChromaLife100 technology assures long-lasting prints that are highly resistant to fading. Photos printed on the PIXMA Pro9000 Mark II will resist fading for up to 100 years when kept in archival quality photo albums. When combined with select genuine Canon photo papers, prints typically exhibit 30-year light fastness and 10-year gas fastness.





imagePROGRAF
iPF9100/8300/6350/6300/5100



©2007 Parish Kohanim. All Rights Reserved.

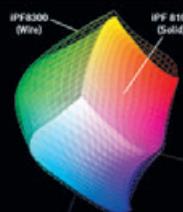
Brilliant Large-format Printing Solutions

The imagePROGRAF printers are pure expressions of Canon ingenuity. Combining groundbreaking technologies with proven Canon expertise in the digital imaging workflow, these innovative large-format printers are the new benchmarks for output quality and performance.

LUCIA
ink

Incomparable 12-Color LUCIA EX Ink Set

With increasing consumer demand for professional and high quality print jobs, high-end graphic and photographic studios continue to seek the capability to accurately produce vivid output of consumers' most demanding projects. The all-new 12-Color LUCIA EX pigment ink set from



Canon RC Photogloss L=50

Canon, incorporated into the 44-inch imagePROGRAF iPF8300, 24-inch imagePROGRAF iPF6350 and the iPF6300 printers, increases the achievable color gamut by approximately 20 percent to produce rich expression. The introduction of the new LUCIA EX ink set provides photographers with the ability to precisely achieve their desired results by producing more expressive and crisp blacks, smooth color gradations, and the capability to faithfully reproduce the finest details in the shadowed areas of photographs. Even very delicate shading is reproduced smoothly to give

images exquisite depth.

The new pigment inks are also designed with an innovative polymer structure that results in greater scratch resistance and protection from color fading, while also reducing bronzing and metamerism, ensuring durable, stable output. Additionally, LUCIA EX pigment inks exhibit excellent short-term color drift ("dry-down") behavior, which is critically important for color-managed workflows and in proofing applications. The new LUCIA EX inks are also resistant to damage from atmospheric ozone, a particular concern in urban environments in situations where

prints might be displayed unframed and exposed to ambient indoor air.

Automatic Color Stability Control System

A sophisticated Automatic Color Stability Control system on imagePROGRAF printers makes it simple to achieve predictable, repeatable color. With a high-performance multi-sensor installed in the printer, calibration is done easily and quickly (under 10 minutes) with a simple setup from the printer's operation panel. Photographers will find amazing consistency among all calibrated printers they might use. Canon imagePROGRAF color calibration also ensures consistency in viewed colors from capture to calibrated computer screen to final print.

Long-lasting Print Durability

Using advanced pigment ink technology, the Canon LUCIA ink set delivers outstanding archival characteristics. Prints are exceptionally fade-resistant and exhibit excellent color stability, light-fastness, gas-fastness, and water resistance.

FINE Dual Print Head Technology

Thanks to unique Canon FINE print head technology, photographers no longer need to choose between print speed and image quality. imagePROGRAF printers employ an advanced FINE dual print head design—each head has 15,360 nozzles,



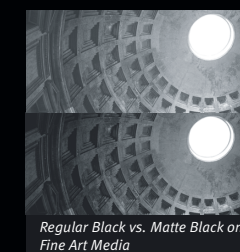
yielding over 30,000 nozzles. This not only delivers extremely high output resolution, but also ensures faster, more reliable printing. The large number of nozzles also substantially increases print head life so that the printer requires less frequent maintenance. And because the print heads are user-replaceable, maintenance can be performed with minimal downtime and no costly service calls.

Automatic Black Ink Selection

The LUCIA ink set includes both Black and Matte Black. Black ink is optimized for glossy-

surface media, while Matte Black ink improves contrast with Fine Art papers.

imagePROGRAF printers keep both black ink cartridges loaded on separate printing channels at all times and automatically selects one or the other depending on media type. This sophisticated design eliminates wasted ink and saves time.



Moreover, the Media Configuration Tool supplied with the printer enables the user to update both the driver and the printer itself, using a periodically published database, to accommodate new media as they become available. Custom ICC output profiles for individual media will also be available via download, making the imagePROGRAF printers ideal for color-managed workflows. (Profiles for the iPF9100, iPF8300, iPF6350, iPF6300 and iPF5100 are available online now.)

Wide Output Media Selection

imagePROGRAF printers include support for a wide range of paper and specialty output media, such as RC photo, fine art and co-branded papers. Versatile media feeding, including a roll feed, enables the printer to handle media thicknesses from 0.07mm to 1.5mm (iPF5100).

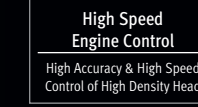


Exclusive L-COA Image Processor

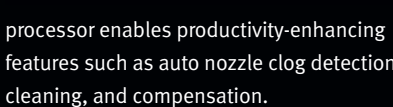
Canon L-COA (Large format printer Common Architecture) technology lies at the heart of the dedicated image processor in imagePROGRAF printers. A proprietary chip architecture, sophisticated algorithms and high-speed multitasking capability ensure rapid printing with precise control over the 12-color ink delivery system. In addition to assuring both the highest printing speed and highest output quality at all times, the L-COA



High Performance & Integration
Integrated System & Engine Control



High Speed Engine Control
High Accuracy & High Speed Control of High Density Head



High Fine Image Process
Integrated System & Engine Control

processor enables productivity-enhancing features such as auto nozzle clog detection, cleaning, and compensation.

16-Bit Printing Support

While conventional inkjet printers are designed to handle only 8-bit-per-channel image data, the imagePROGRAF printers provide advanced support for high-bit-depth files. A supplied plug-in enables high-bit-depth images to be printed directly from Digital Photo Professional ver.3.1 and later.

Also included is an export module for printing 16-bit files directly from



Adobe® Photoshop®. These features provide the photographer with high-bit-depth workflow options from capture to output. Images are reproduced with smoother tonal gradations for greater photorealism. Dynamic-range-related problems, such as posterization and banding, are significantly reduced. You can now realize that high depth color you captured with your digital camera in your wide format without additional software.

Advanced Connectivity

The imagePROGRAF printers are equipped with USB 2.0 Hi-Speed and Ethernet interfaces. A FireWire (IEEE 1394) interface is also available as an option for the iPF5100 and iPF9100. They also feature excellent multi-platform support, enabling seamless integration with a wide variety of hardware and workflow configurations.





PIXMA Pro 9500 Mark II / Pro 9000 Mark II

Photo Printer



©2007 Stephen Eastwood. All Rights Reserved.



Fast, Spectacular, Affordable Desktop Photo Printing

A professional-quality printer capable of gallery-grade output up to 13 x 19 inches on a wide variety of media, the affordable Canon PIXMA Pro series printers have no peer when it comes to image quality, speed and value.

LUCIA ink

10-color Pigment Ink System (Pro9500 Mark II)

Featuring the same LUCIA pigment ink found in the imagePROGRAF series printers, the PIXMA Pro9500 Mark II's 10-pigment ink set produces professional-quality, archival prints. The Gray, Photo Black and Matte Black ink



produce monochrome photographs of unrivaled quality on fine art and glossy photo paper. Gray ink reduces grain, banding and metamerism and practically eliminates color shifts. Unlike black ink that increases contrast, matte black ink increases black density on fine art paper while maintaining detail in shadows. With 10 individual ink tanks, users can replace a single color, reducing waste and saving money. The Pro9500 Mark II's ink is less sensitive to light and environmental factors. Therefore, prints have incredibly smoother gradations and are of archival quality.

ChromaLife100 Ink System

ChromaLife100 Ink System (Pro9000 Mark II)

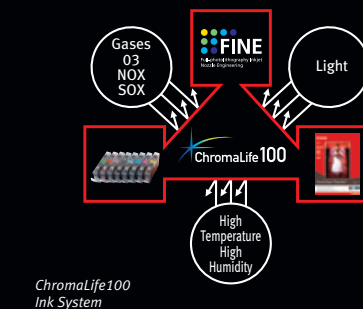
The PIXMA Pro9000 Mark II features Canon's highly refined dye-based ChromaLife100 ink system. This advanced 8-color system reproduces a much wider color gamut than conventional inkjet printers,



delivering a color range that rivals positive film. The dye-based ink set further ensures vividly brilliant colors and a high-luster surface finish that enhances the beauty of printed images.

Long-lasting Photos

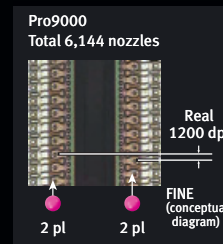
Canon's ChromaLife100 ink technology also delivers prints that withstand the test of time. Photos printed on the PIXMA Pro9000 Mark II will resist fading for up to 100 years when kept in albums. When combined with genuine Canon photo media, prints typically exhibit 30-year light-fastness and 10-year gas-fastness.



ChromaLife100 Ink System

FINE Print Head Technology

Canon FINE (Full-photolithography Inkjet Nozzle Engineering) print head technology is highly praised for precision and performance. The PIXMA Pro9000 Mark II print head has 6,144 nozzles capable of releasing extremely uniform microfine ink droplets as small as 2 picoliters, while the PIXMA Pro9500 Mark II print head has 7,680 nozzles with droplets as small as 3 picoliters. The high-density nozzle design produces sharper image detail with less grain. Fast printing speeds are achieved without compromising output resolution—a maximum of 4800 x 2400 dpi.



Pro9000 Total 6,144 nozzles Real 1200 dpi

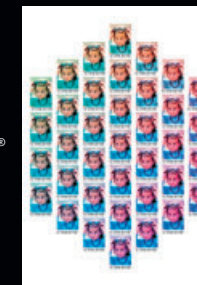
Versatile, Convenient Paper Handling

The PIXMA Pro series printers dual paper paths: standard top-loading and manual front-loading. This advanced design accommodates a wide range of media types. The manual front feeder provides a straight paper path, enabling the use of large, non-standard paper sizes as well as thicker fine art and specialty media (up to 1.2mm).

Easy-PhotoPrint Pro Software

Canon's exclusive Easy-PhotoPrint Pro (EPP Pro) for Windows® and Macintosh® is a plug-in that can be launched from either Digital Photo Professional or Adobe Photoshop CS, CS2, CS3 or CS4. It is a professional productivity tool that enables precise control over photographic printing with the PIXMA Pro series printers, enhancing the workflows typically used by imaging professionals and advanced enthusiasts. Linked with Digital Photo Professional, for example, photographers shooting with Canon EOS Digital SLR cameras can batch-process as many as 1,000 RAW images with a single mouse click.

EPP Pro includes numerous features designed to make life easier for the hard-working professional. Pattern Print, for example, prints multiple thumbnails of a single image, simulating a range of output settings on a single sheet of paper for easy comparison. Contact Print quickly creates customized index prints. Photographers can also choose to include select EXIF information on their prints. EPP Pro also provides superior control over color output, including advanced color management using ICC profiles and sophisticated printing support. All settings can be saved for easy recall.



Pattern Print

Advanced Camera Direct Printing

Photographers who shoot with Canon EOS Digital SLR cameras can take advantage of extraordinary capabilities when printing directly to the PIXMA Pro Printers (via PictBridge). For example, direct support for Canon Picture Style technology enables advanced print output control, either faithfully preserving original intent or dialing-in specific image enhancements. Special output options, including useful layouts, can be selected on the camera—no need for a computer.



Use Advanced Camera Direct Capabilities to quickly make prints with EXIF data and contact sheets.

©Vincent Laforet



©Eddie Tapp