



Code A Story-Coding with There Was a Cold Lady Who Swallowed Some Snow and Ozobot

Created by

Jennifer Mellina

barnhartj@clarke.k12.ga.us

Topics

Programming

Technology

Literature

Ages

Grades K-2

Duration

45 minutes



Code A Story

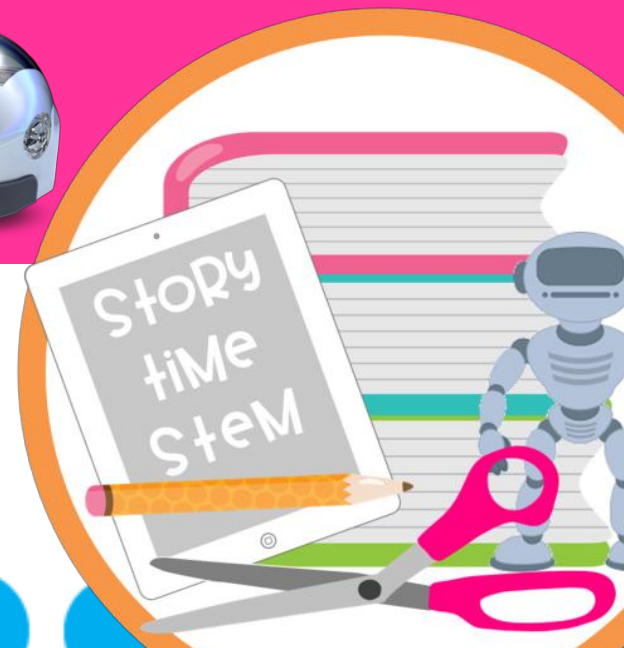
Here WAS A Cold Lady WHO SWALLOWed Some SNOW

Sequencing fun with ozobot!



Whole Group /Center
Task Cards

© LEOPARD PRINT LIBRARIAN 2017



follow Me for MORE fun stuff!

TO SEE THIS UNIT IN ACTION OR TO FIND OUT ABOUT UPCOMING
PRODUCTS, FOLLOW ME!



LeopardPRINTLIBRARIAN

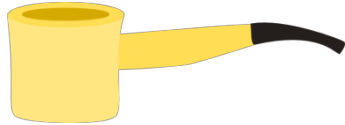


[HTTP://BARNHARTJ.WIXSITE.COM/LeopardPRINTLIBRARY](http://BARNHARTJ.WIXSITE.COM/LeopardPRINTLIBRARY)

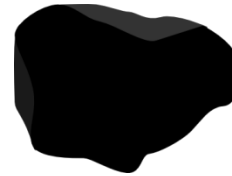
Sequencing CARds



SNOW



PIPE



COAL



HAT



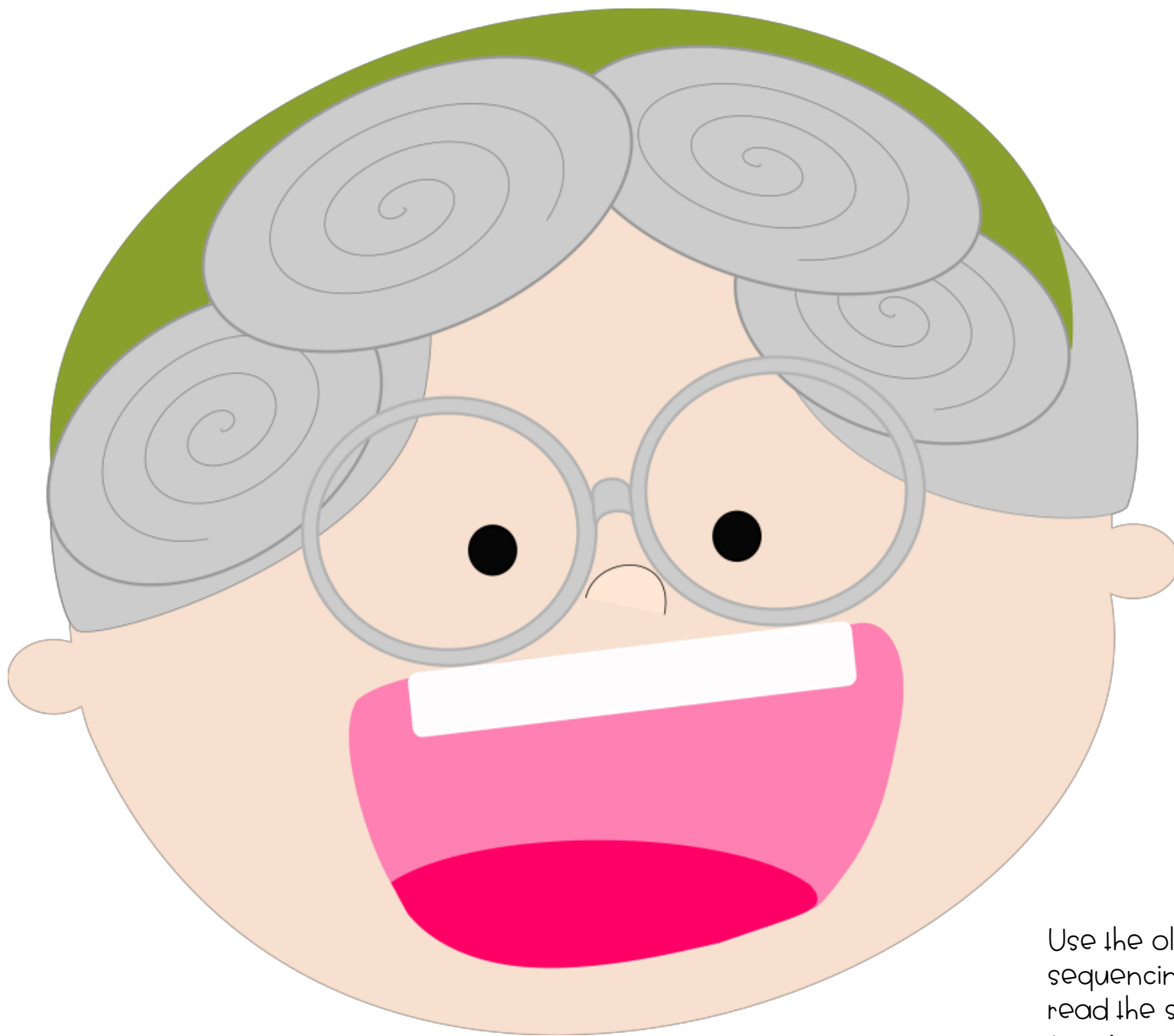
STICK



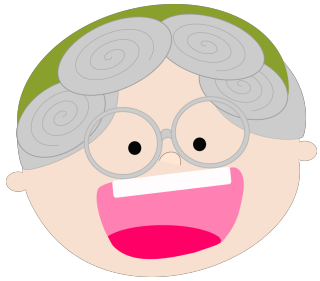
SCARF



SNOWMAN



Use the old lady and
sequencing cards while you
read the story ,or as a
jumping off point for the
coding activity



START Here

Draw a path for the old lady using markers and following the directions on the task cards

first

Second

third

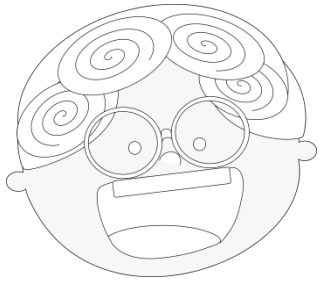
fourth

fifth

Sixth

LAST





START HERE

Draw a path for the old lady using markers and following the directions on the task cards

FIRST

SECOND

THIRD

FOURTH

FIFTH

CALIBRATE
Me



SIXTH

LAST



Student Sequencing Cards and Ozobot topper. Laminate. Use dry erase pens to use year after year.



SNOW



StICK



SNOW



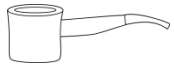
StICK



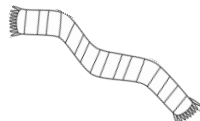
SNOW



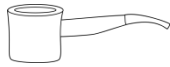
StICK



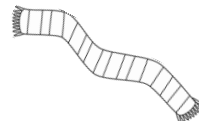
Pipe



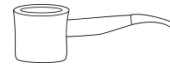
SCARF



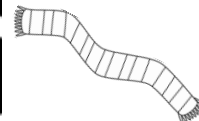
Pipe



SCARF



Pipe



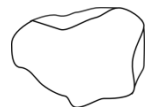
SCARF



COAL



SNOWMAN



COAL



SNOWMAN



COAL



SNOWMAN



HAT

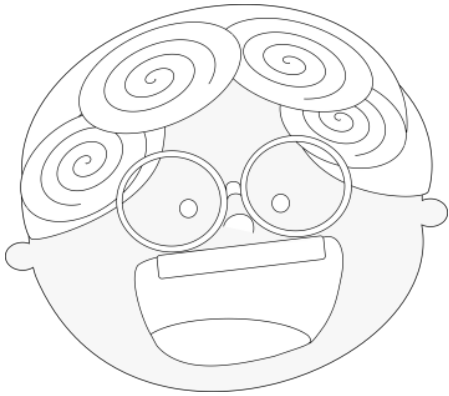


HAT



HAT





COLD Lady SEQUENCING

NAME _____

WRITE THE ITEMS THAT THE OLD LADY ATE IN THE CORRECT ORDER.
COLOR THE CODE THAT YOU USED.

FIRST

| | | |
|--|--|--|
| | | |
|--|--|--|

COLOR
THE
CODE

SECOND

| | | |
|--|--|--|
| | | |
|--|--|--|

COLOR
THE
CODE

THIRD

| | | |
|--|--|--|
| | | |
|--|--|--|

COLOR
THE
CODE

FOURTH

| | | |
|--|--|--|
| | | |
|--|--|--|

COLOR
THE
CODE

FIFTH

| | | |
|--|--|--|
| | | |
|--|--|--|

COLOR
THE
CODE

SIXTH

| | | |
|--|--|--|
| | | |
|--|--|--|

COLOR
THE
CODE

LAST

| | | |
|--|--|--|
| | | |
|--|--|--|

COLOR
THE
CODE

OZOBOT Codes


 SNAiL doSe

 tURBo

 SLOW

 NiTRO BOOST

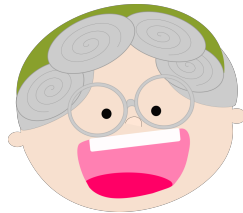
 CRuiSe

 u-tuRN
(LiNe eNd)

 fASt

*CodeS MuSt CoME BeFoRe ANd
AfTeR A STRAiGHt BLACK LiNe

OLD LADY SEQUENCING CARDS



FIRST

dRAW A LiNe fROM the
oLd LAdy to the fIRST
thiNG thAT She
SWALLowed. MAKE the
oZOBot go SLOW.

SECOND

dRAW A LiNe fROM the
fIRST thiNG to the
SeCONd thiNG thAT She
SWALLowed. MAKE the
oZOBot go fAST.

THIRD

dRAW A LiNe fROM the
SeCONd thiNG to the
thiRd thiNG thAT She
SWALLowed. Give the
oZOBot A NiTRO BOOST.

FOURTH

dRAW A LiNe fROM the
thiRd thiNG to the
fouRTH thiNG thAt She
SWALLowed. MAKE the
ozOBot CRuiSe.

FiFTH

dRAW A LiNe fROM the
fouRTH thiNG to the
fiFth thAt She
SWALLowed. MAKE the
ozOBot go tURBo.

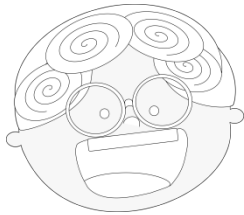
SiXTH

dRAW A LiNe fROM the
fiFth thiNG to the SiXth
thiNG thAt She
SWALLowed. MAKE the
ozOBot SNAil doSe.

LAST

dRAW A LiNe fROM the
SiXth thiNG to the LAST
thiNG thAt She
SWALLowed. MAKE the
ozOBot u-tuRN (LiNe end).

OLD LADY SEQUENCING CARDS



FIRST

dRAW A LiNe fROM the
oLd LAdy to the fIRST
thiNG thAT She
SWALLowed. MAKE the
oZOBot go SLOW.

SECOND

dRAW A LiNe fROM the
fIRST thiNG to the
SeCONd thiNG thAT She
SWALLowed. MAKE the
oZOBot go fAST.

THIRD

dRAW A LiNe fROM the
SeCONd thiNG to the
thiRd thiNG thAT She
SWALLowed. Give the
oZOBot A NiTRO BOOST.

FOURTH

dRAW A LiNe fROM the
thiRd thiNG to the
fouRTH thiNG thAt She
SWALLowed. MAKE the
oZOBot CRuiSe.

FIFTH

dRAW A LiNe fROM the
fouRTH thiNG to the
fiFTH thiNG thAt She
SWALLowed. MAKE the
oZOBot go tURBo.

SIXTH

dRAW A LiNe fROM the
fiFTH thiNG to the SiXTH
thiNG thAt She
SWALLowed. MAKE the
oZOBot SNAiL doSe.

LAST

dRAW A LiNe fROM the
SiXTH thiNG to the LAST
thiNG thAt She
SWALLowed. MAKE the
oZOBot u-tuRN (LiNe end).