

The background is a high-resolution aerial topographic map. It features a complex pattern of diamond-shaped overlays, each containing a different elevation or terrain data set. The colors range from deep reds and oranges for higher elevations to greens and blues for lower elevations and water bodies. The overall effect is a mosaic of different spatial data layers.

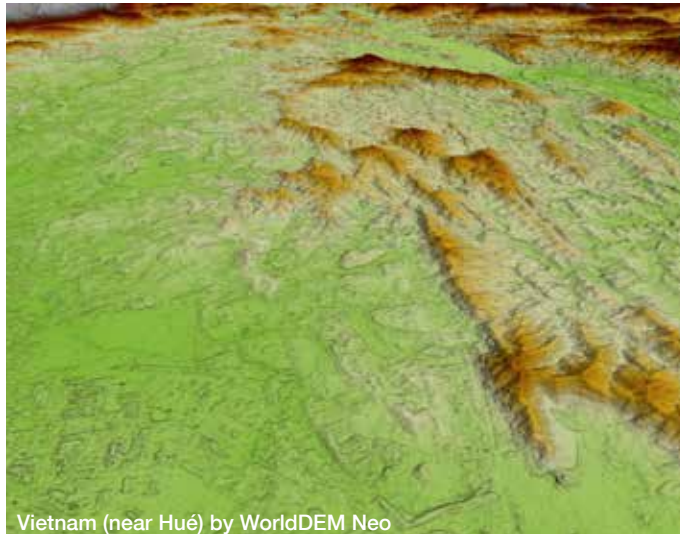
DEFENCE AND SPACE
Intelligence

WorldDEM™ Neo -
WorldDEM™
The Next Level of Global
Elevation Models

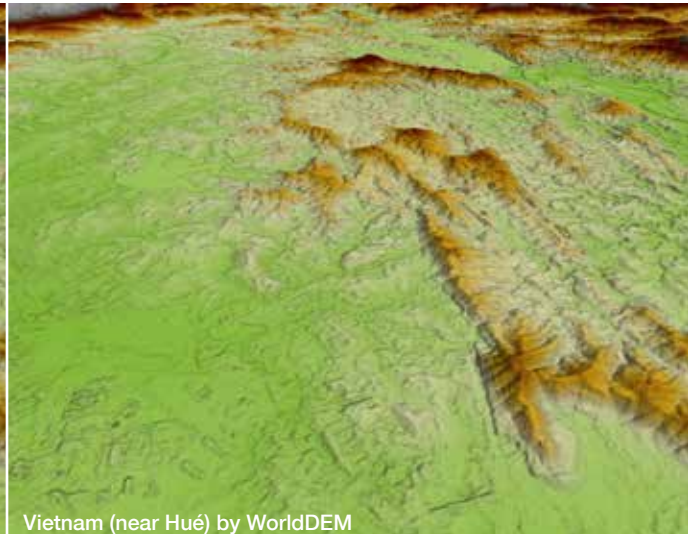
AIRBUS

Accuracy of a New Dimension and Unique Data Quality for all Global Applications

WorldDEM™ Neo and WorldDEM™ are the most accurate global satellite-based digital elevation models available today! With unique data quality and level of detail, both elevation models facilitate a wide range of applications such as line-of-sight-analysis, hydrological modelling, satellite imagery orthorectification and much more. Worldwide availability makes them robust reference layers for risk assessments and investigations of global phenomena.



Vietnam (near Hué) by WorldDEM Neo



Vietnam (near Hué) by WorldDEM

WorldDEM Neo

Our next level of Global Elevation Models joining the Airbus Elevation portfolio is WorldDEM Neo.

It combines global coverage, very high accuracies of WorldDEM coverage with up-to-date, fresh data acquisition (from 2017-2021) and unique resolution and it sets a new standard in satellite based elevation models that are globally available today.

Key Features

	WorldDEM Neo	WorldDEM
Resolution	5m pixel spacing for every spot on earth	12m pixel spacing for every spot on earth
Accuracy	Unrivalled accuracies of 2m relative and 2.5m absolute vertical	
Coverage	Homogeneous, seamless, pole-to-pole coverage	
Availability	Globally off-the-shelf available	

WorldDEM™ Neo and WorldDEM™ both are products of the TanDEM-X Mission (TerraSAR-X add-on for Digital Elevation Measurements), realised as a Public Private Partnership (PPP) between Airbus Defence and Space and the German Aerospace Centre (DLR). Airbus Defence and Space holds the exclusive commercial marketing rights for the data and refines the elevation models according to the needs of commercial users worldwide.

WorldDEM

Being the first global homogeneous, single source, high-resolution Digital Elevation Model (DEM), with unique data quality, WorldDEM is a reliable reference layer and closes gaps in areas where no adequate DEM data exists. Pole-to-pole coverage coupled with unrivalled accuracy and level of detail - these are the defining characteristics of WorldDEM.

Use Cases/Applications

Integrating WorldDEM Neo/ WorldDEM as a precise reference layer into operations and applications provides for a single confidence scale and enhances the performance of a wide range of systems and equipment.

- Enhanced responsiveness and efficiency for defence & security missions
- Improved flight safety and efficiency for defence & security missions
- High-quality image orthorectification
- Reliable planning and operation of exploration projects
- Global availability enhances international cooperation and cross-border mission planning
- Timely intelligence for emergency response

Airbus Defence and Space

Australia, Brazil, China, Finland, France, Germany, Hungary, Singapore, Spain, United Kingdom, United States

[@AirbusSpace](https://twitter.com/AirbusSpace)
www.intelligence-airbusds.com

This document is not contractual.
Subject to change without notice.
© DLR e.V. 2021
© Airbus Defence and Space
All rights reserved.

AIRBUS