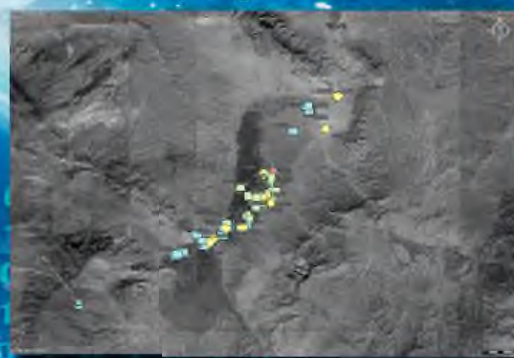
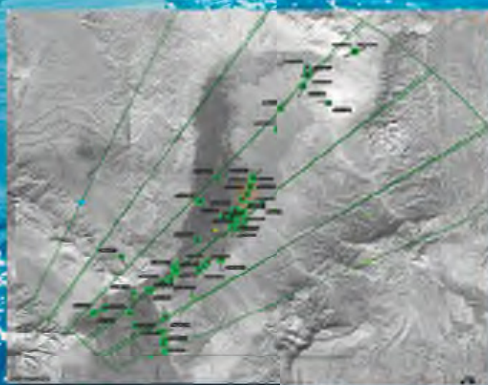


DEFENCE AND SPACE

Intelligence
Solutions

Fortion® SuRVIn cPED

Intelligence, Exploitation,
Surveillance Suite



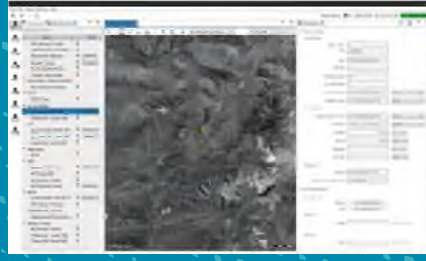
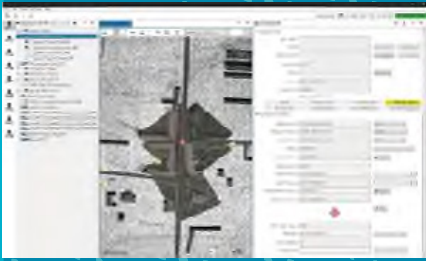
AIRBUS

Fortion® SuRVIn cPED

The system for providing a real-time recognised ground picture

The Fortion SuRVIn cPED provides authorities on strategic, operational, and tactical level, with:

- Continuous Near Real Time, information display, exploitation and fusion regarding images, videos and tracks.
- Provide Interoperability
- Serves as a JISR Hub
- Implemented the Intelligence Cycle for Near Real Time information
- Intelligence and situational awareness concerning friendly, neutral, and hostile airborne, ground and maritime forces and therefore supports - informed, timely and accurate decision-making - subsequent reporting



Key Benefits

- Interoperable due to standard NATO interfaces.
- Easily extendible Service-oriented Architecture.
- Accredited and introduced into use by NATO.
- Free of ITAR.
- Multi-source data fusion and integration.

Data fusion

Fortion SuRVIn cPED is capable to combine near real-time data from different kind of sensor sources with non-real time data. The advanced track fusion features allow the combination of different types of track information (GMTI, NFFI, IFF, ELINT, Link16) in order to generate a complete mission overview.

Standard Interfaces

Fortion SuRVIn cPED provides data interfaces to NATO and interoperable national Command, Control, Communications and Information (C4I) systems, and into the Link 16 and Link 22 networks. Dissemination of Intelligence data will be done via CSD (coalition shared data base) Fortion SuRVIn cPED interoperability is in line with "NATO ISR Interoperability Architecture (NIIA)" and its applicable STANAGs any further intelligence system can be easily accessed. The interoperability has been verified in the "NATO AGS Capability Testbed" at the NATO Communication and Information Agency (NCIA), The Hague, Netherlands.

Service-oriented Architecture

The features of Fortion SuRVIn cPED are realized using a service oriented approach in order to establish various products, which provide operators with integrated capabilities for Reconnaissance, Surveillance and Intelligence. Fortion SuRVIn cPED also includes support functions like data management and administration functionalities. Fortion SuRVIn cPED can be configured and assembled to customer needs. Fortion SuRVIn cPED has an open, scalable, upgradeable and inter-operable architecture based on the ADatP-34(D) reference architecture "NATO C3 Technical Architecture". It defines NATO Technical Reference Model (NTRM), NATO Common Operating Environment (NCO) and NATO Component (NCO) Model using Service Oriented Architecture (SOA) paradigms.

Airbus Defence and Space

Australia, Brazil, China, Finland, France, Germany, Hungary, Singapore, Spain, United Kingdom, United States

🐦 @AirbusDefence

www.intelligence-airbusds.com

This document is not contractual.
Subject to change without notice.
Copyright 2020
All rights reserved.

AIRBUS