

An aerial photograph of a vast blue ocean under a blue sky with light clouds. Two ships are visible: a smaller grey naval-style vessel in the middle distance and a larger red and white container ship in the lower right foreground. Above each ship is a glowing digital location pin icon, composed of a network of white dots connected by thin white lines, suggesting a digital tracking or monitoring system.

OceanFinder

Leveraging new and expanded capabilities for the world's most advanced ocean monitoring and asset tracking platform

AIRBUS

Understanding the challenge

Potential challenge, threats and illegal activities

Ensuring the safety of assets and personnel in hostile areas

Increasing Search & Rescue operation effectiveness

Combatting drug trafficking

Reducing illegal fishing

Locating and tracking missing or hijacked vessels

Cost-effective fleet management

Common/current approach

Patrol vessels and aircraft have been used to satisfy some of these challenges but resources are finite and they can not cost-effectively, or comprehensively, manage them all – or meet rising demands within current budgets

Understanding the challenge

Leveraging new ideas

As the challenge continues to grow, it is crucial that stakeholders optimise the use of their resources to increase effectiveness through leveraging the opportunities that technology offers

The role of satellite technology and intelligence

Satellite systems provide complementary information and new opportunities to optimise the cost and effectiveness of operations at sea

AIRBUS OceanFinder

Cloud could affect object detection

No impact on object detection

TARGET	CLASSIFY S	CLASSIFY MS	DETECT	SCAN
Precision : High level of details	Classification : Medium information		Detection : Large coverage	

5 products with specificity

OceanFinder

A solution designed for the challenges
of tomorrow

OceanFinder

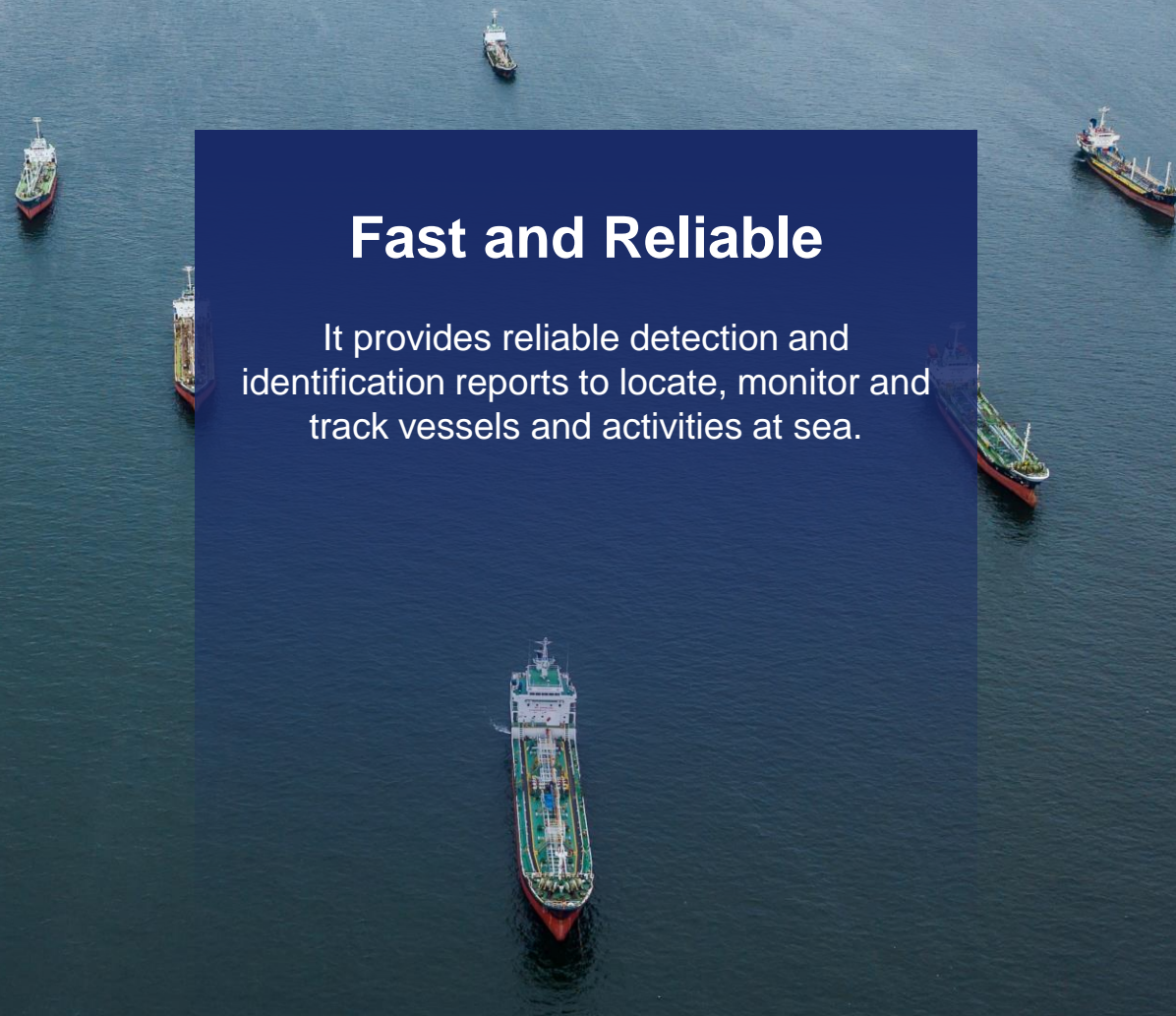
Easy-to-use

An advanced, self-tasking digital platform, rapidly delivering satellite-based maritime intelligence, direct to you.



Fast and Reliable

It provides reliable detection and identification reports to locate, monitor and track vessels and activities at sea.





What makes it different?

True global coverage

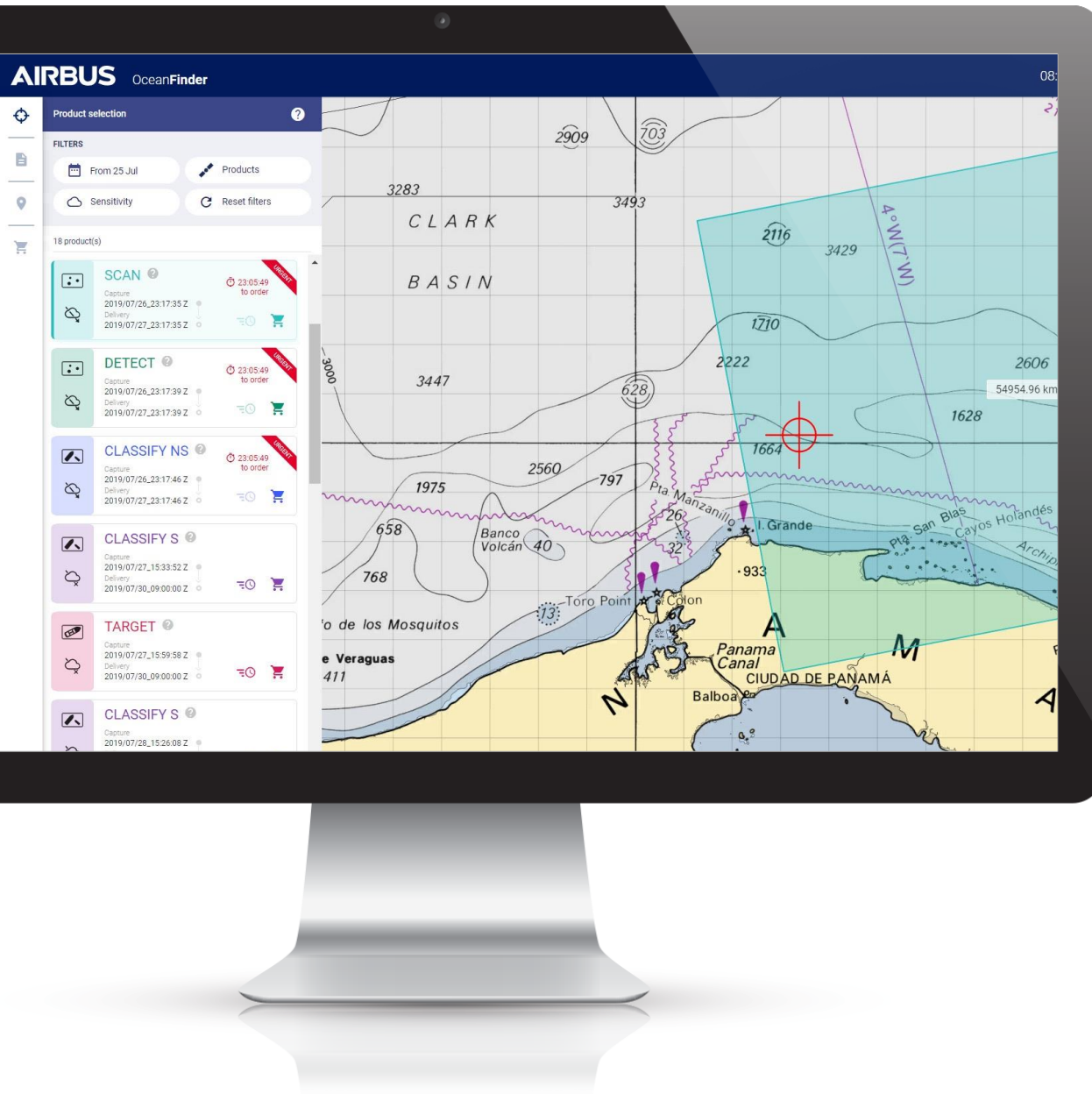
Both weather-
independent and
highly cost-effective



What makes it different?

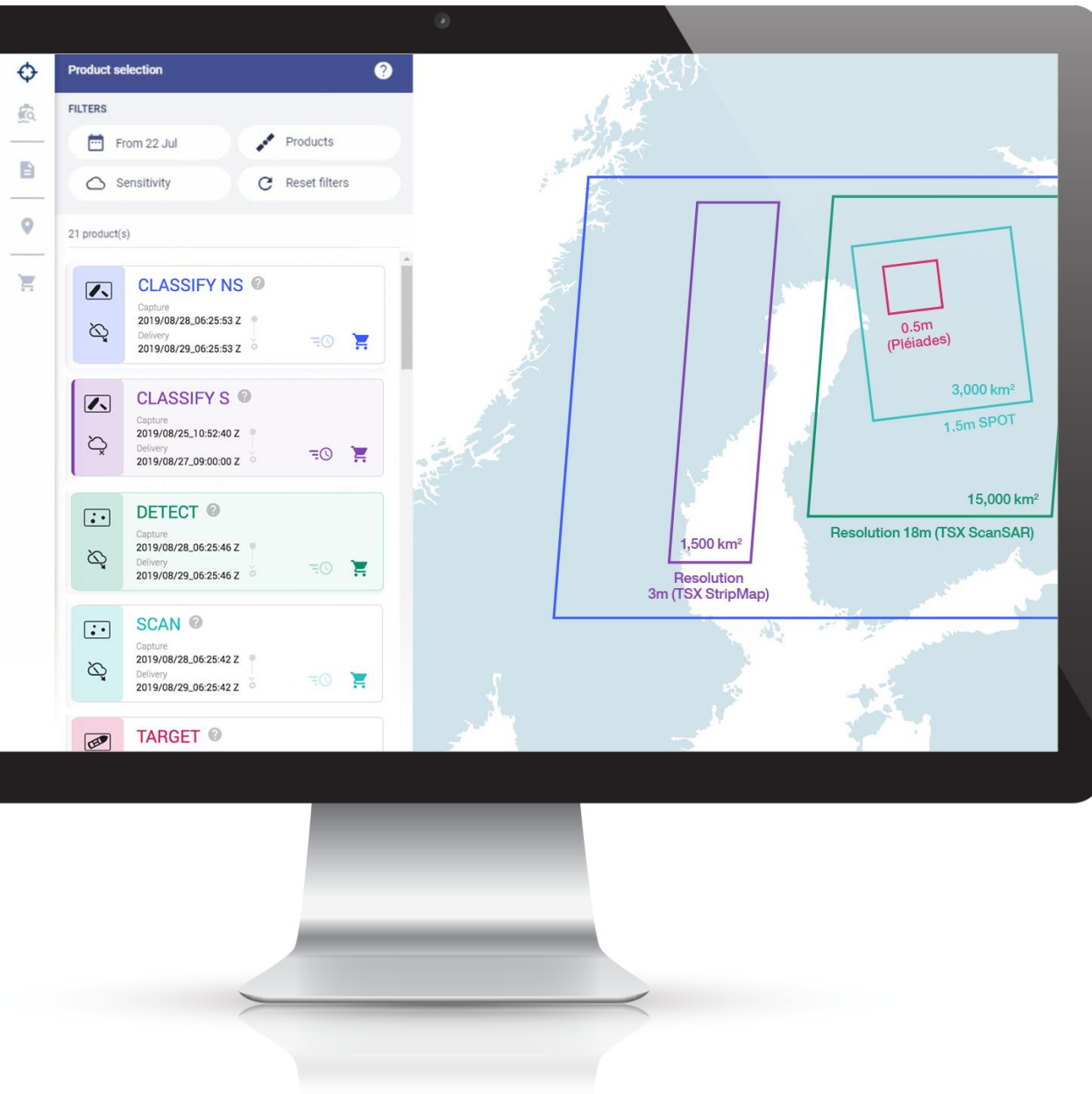
Complimentary sensors

The ideal combination
between coverage and
resolution



What makes it different?

**Priority satellite
sensor activation
with the relevant
priority to ensure a
successful mission**



What makes it different?

Self-selection of the most appropriate product. Flexibility to meet your requirements



What makes it different?

AIS signal correlation
pinpoint non-reporting
assets with high levels
of accuracy



What makes it different?

Predictive capabilities

Can indicate the speed and position of a vessel to predict route and future location



What makes it different?

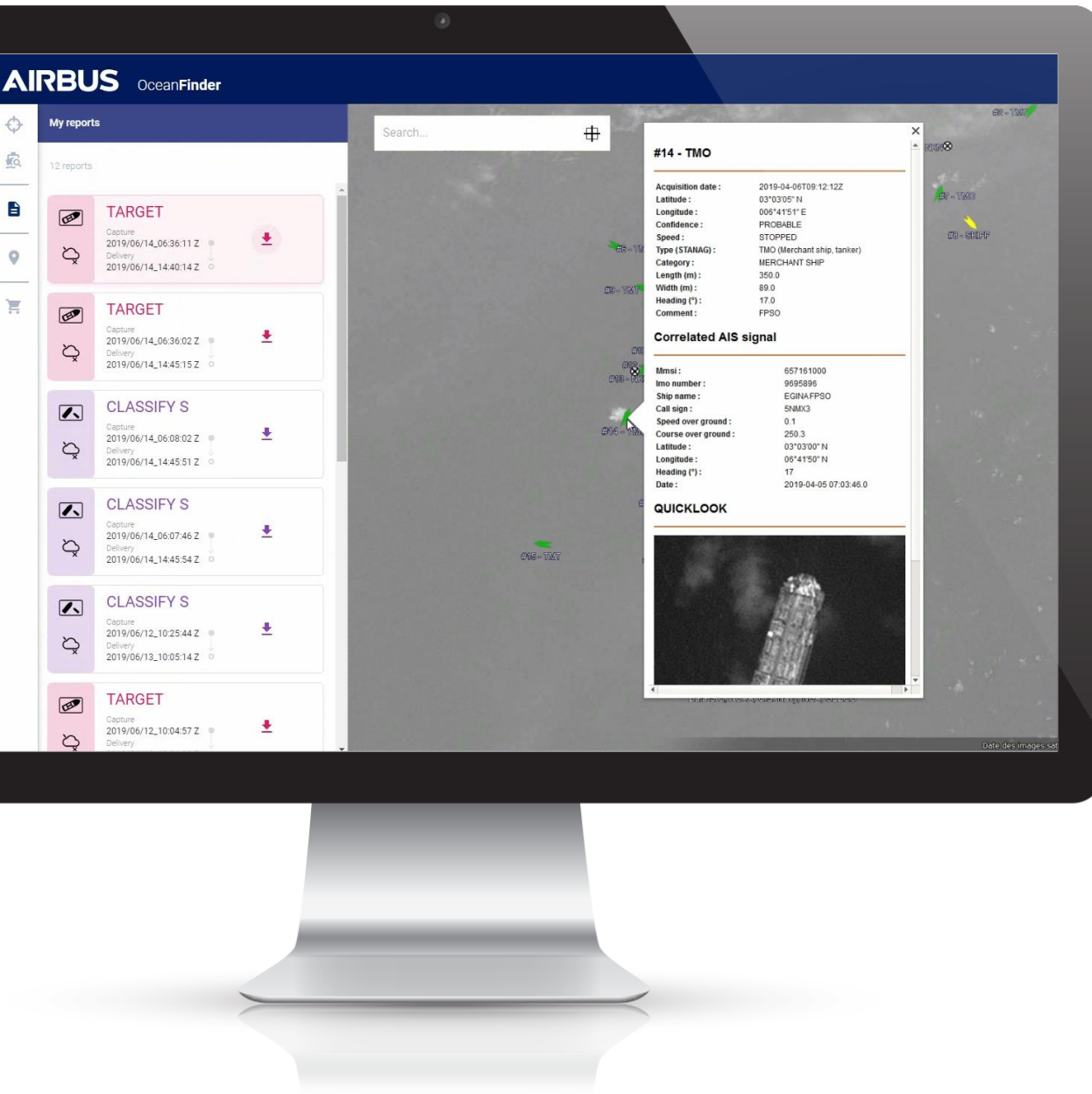
Routine mode

Designed for
background
intelligence, pay-as-
you-go or annual
subscription



What makes it different?

Improved analysis
Combining imagery,
proprietary, **intelligence
data** and improved AIS
correlation



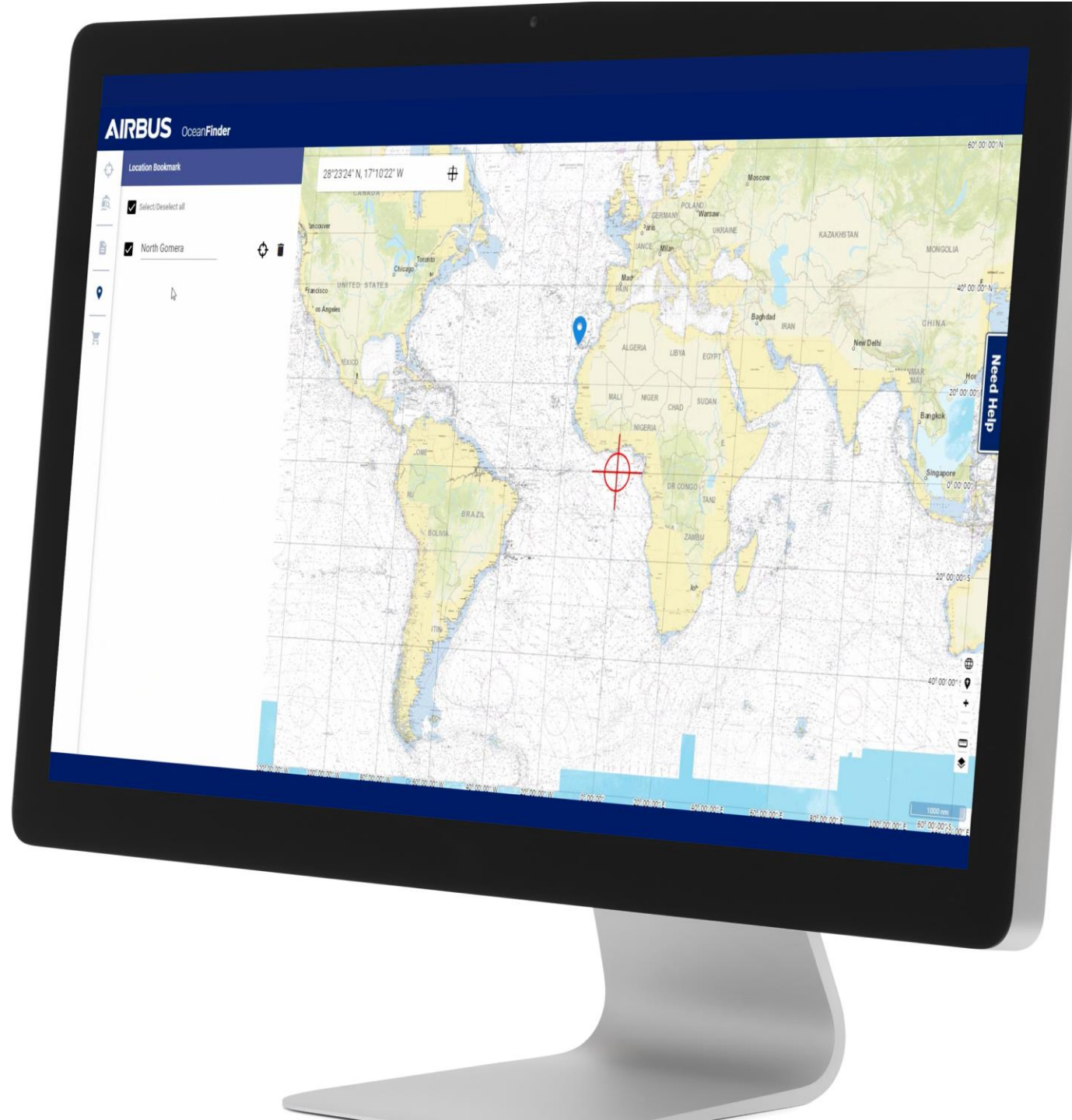
What makes it different?

Unplanned operations

Rapid activation and delivery to ensure the information is as fresh as possible (new emergency mode)

How OceanFinder works

An easy-to-use and innovative interface



What is it for?



Search & Rescue Operations



What is it for?



**Provides evidence
to support
insurance fraud**



What is it for?



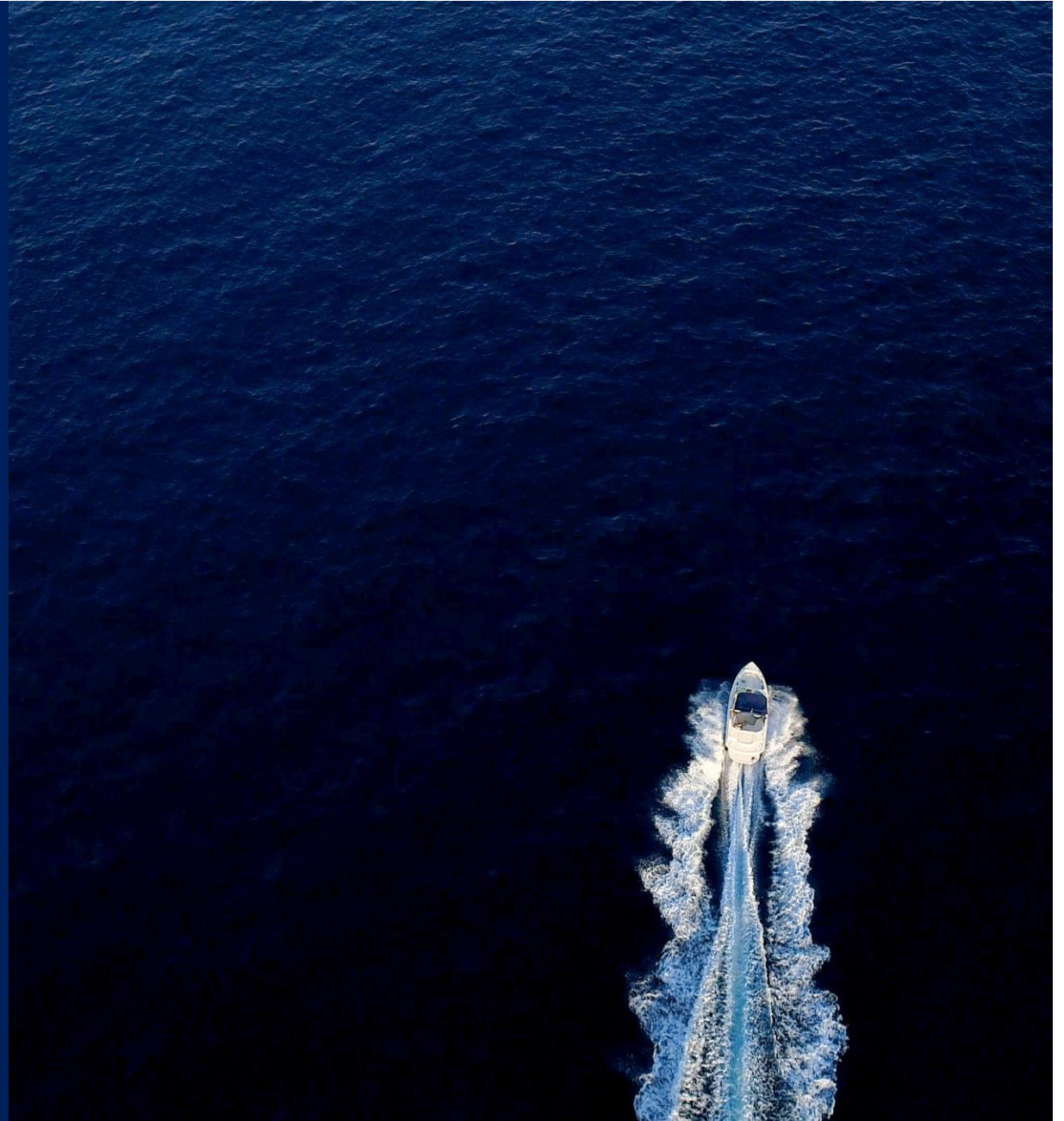
**Hostile area
monitoring**



What is it for?



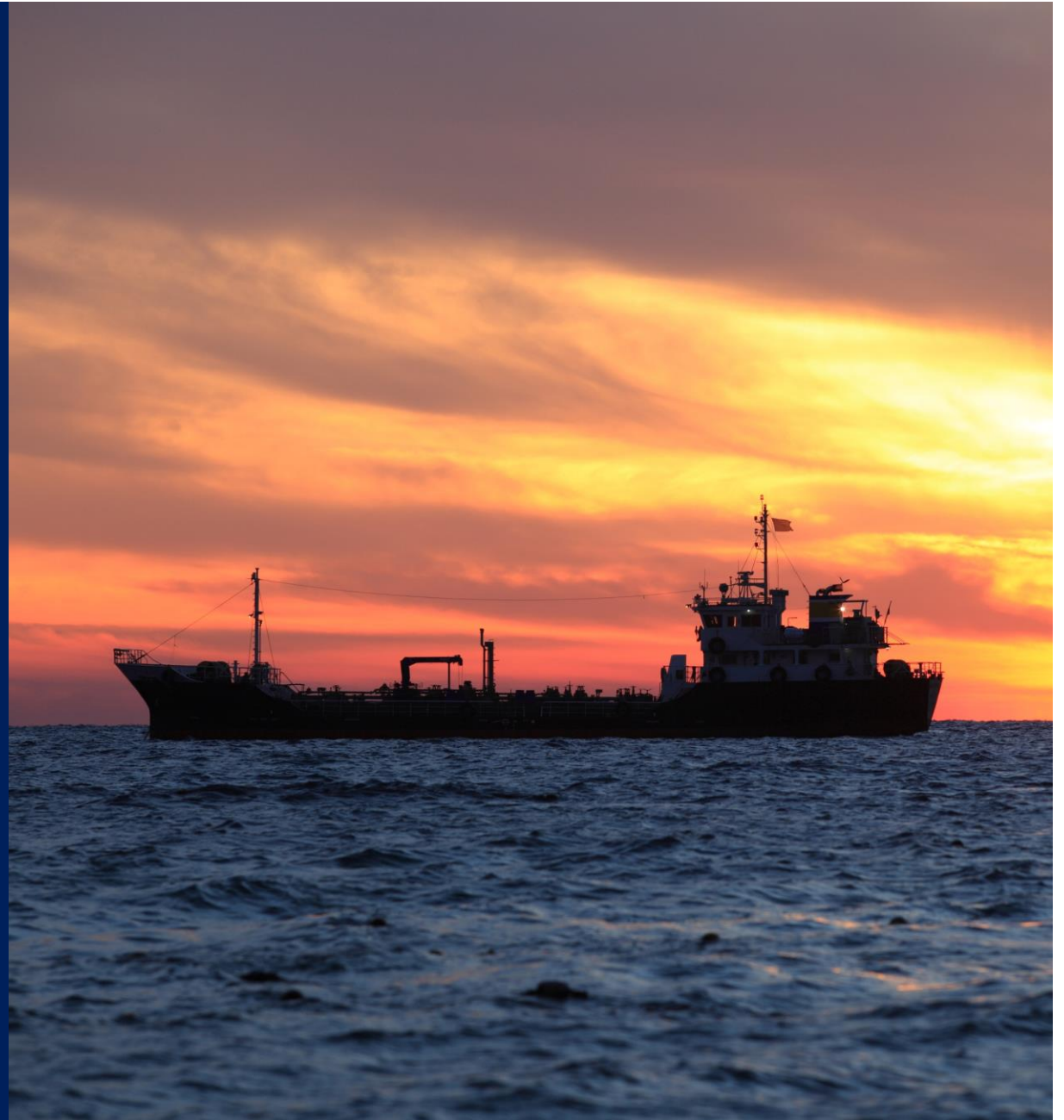
**Detect illegal activities,
such as drug
smuggling and
'dark vessels'**



What is it for?



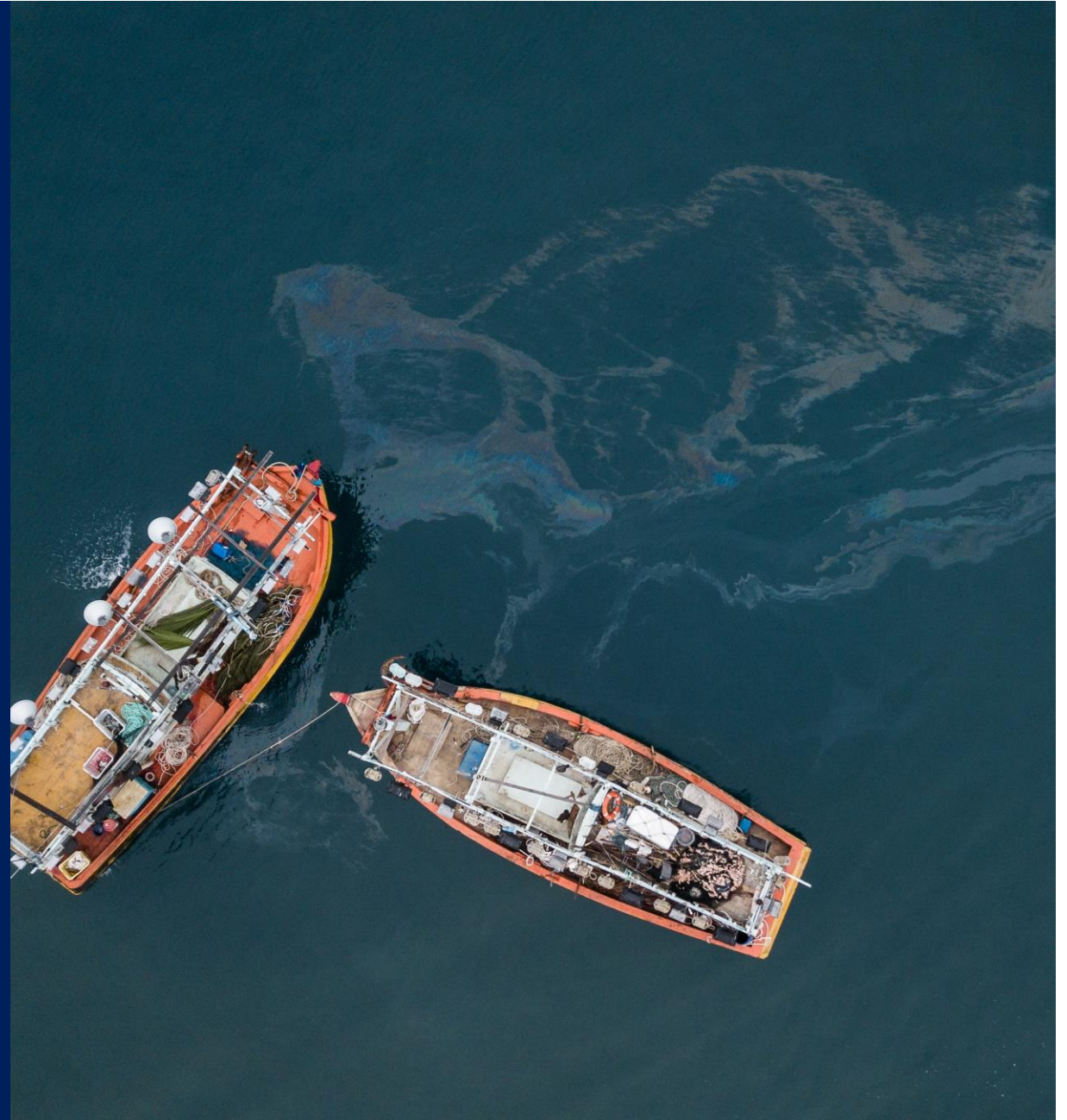
**Find and track
hijacked vessels**



What is it for?



**Environmental
monitoring and
enforcement applications**



What is it for?



**Monitor for illegal
fishing activities**



What is it for?



Supports urgent
requirements



An aerial photograph of a vast blue ocean under a blue sky with light clouds. Two ships are visible: a smaller grey naval vessel in the middle distance and a larger container ship in the foreground. Above each ship is a glowing digital network structure, resembling a mesh or constellation of points connected by lines, suggesting a network or data flow. A white horizontal bar is positioned above the text "Thank you".

Thank you

AIRBUS

The background of the advertisement is a wide-angle photograph of a deep blue ocean under a bright blue sky with scattered white clouds. Two ships are visible on the water. In the lower right foreground, a large container ship with a red hull and a white superstructure is moving away from the viewer, leaving a white wake. In the middle distance, to the left, is a smaller, grey naval-style vessel. Above each ship, a glowing, wireframe map of the world is superimposed on the sky. The map is composed of numerous white dots connected by thin white lines, forming a spherical shape. The dots are more densely packed in some areas, particularly around the equator and the continents, suggesting a global network or data coverage. The overall image conveys a sense of global maritime surveillance and connectivity.

OceanFinder

Making the invisible visible.

If you have any questions, please contact:
intelligence-maritime@airbus.com

AIRBUS