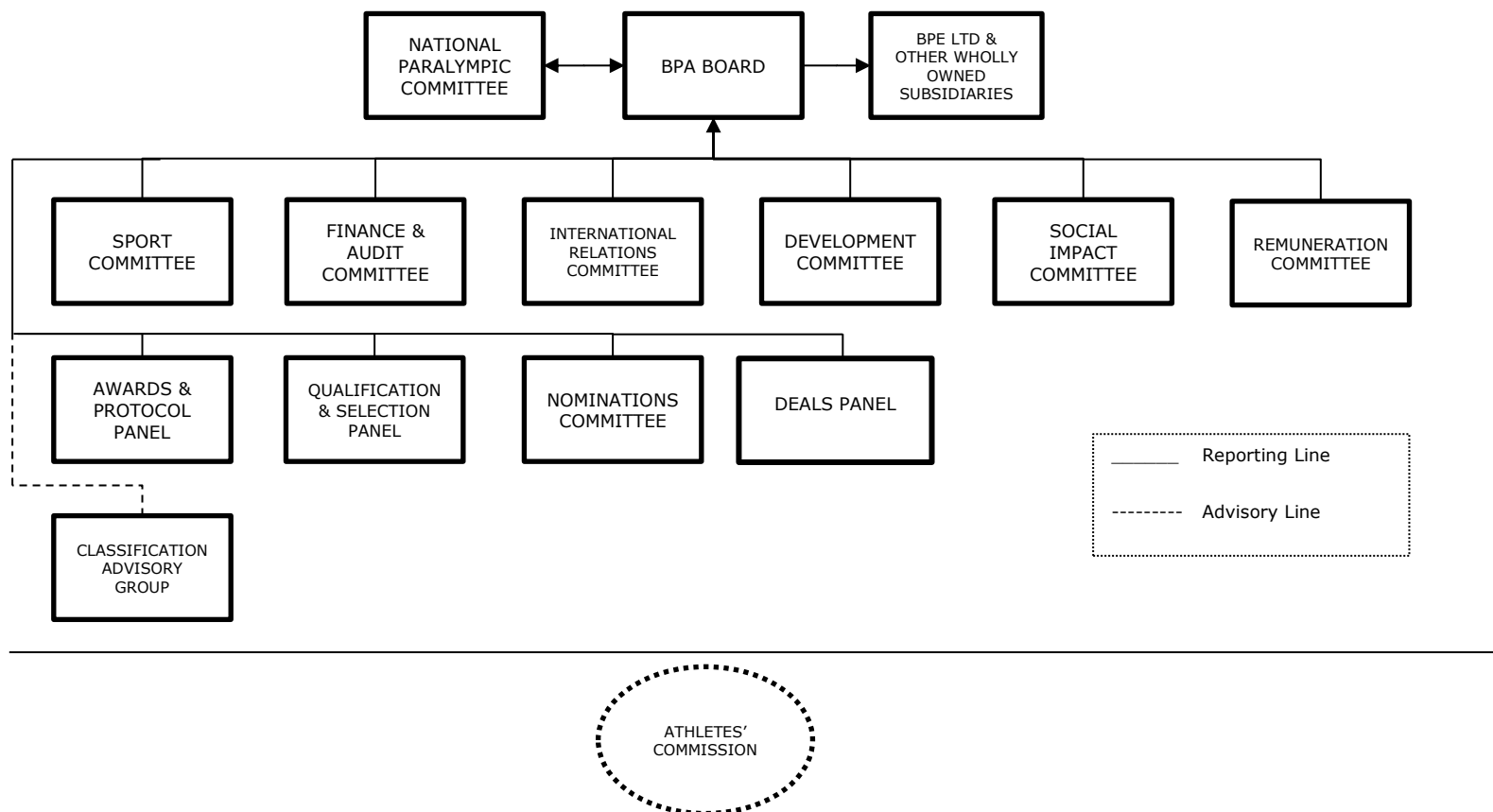


British Paralympic Association Board Sub Committees and Groups

The BPA's Board is supported by a range of Sub Committees, Panels and Groups that support the executive in delivery, give expert advice and opinion on prioritisation and focus and ensure appropriate scrutiny of actions.

Membership of the various groups is drawn from the Board, supported by external expertise and representatives from relevant partners where appropriate. On occasion the CEO or other members of the Executive team may serve as formal members of a Panel or Group.

The diagram below indicates what areas are currently covered by these Sub Committees, Panels and Groups and how they relate to the BPA Board and structure.



The Athletes' Commission is independent from Board; its purpose is "to represent the views of Athletes to the BPA Board, Executive Team and Games Planning Group." The Chair of the Athletes' Commission attends Board meetings as an Observer.