

# Fire Building



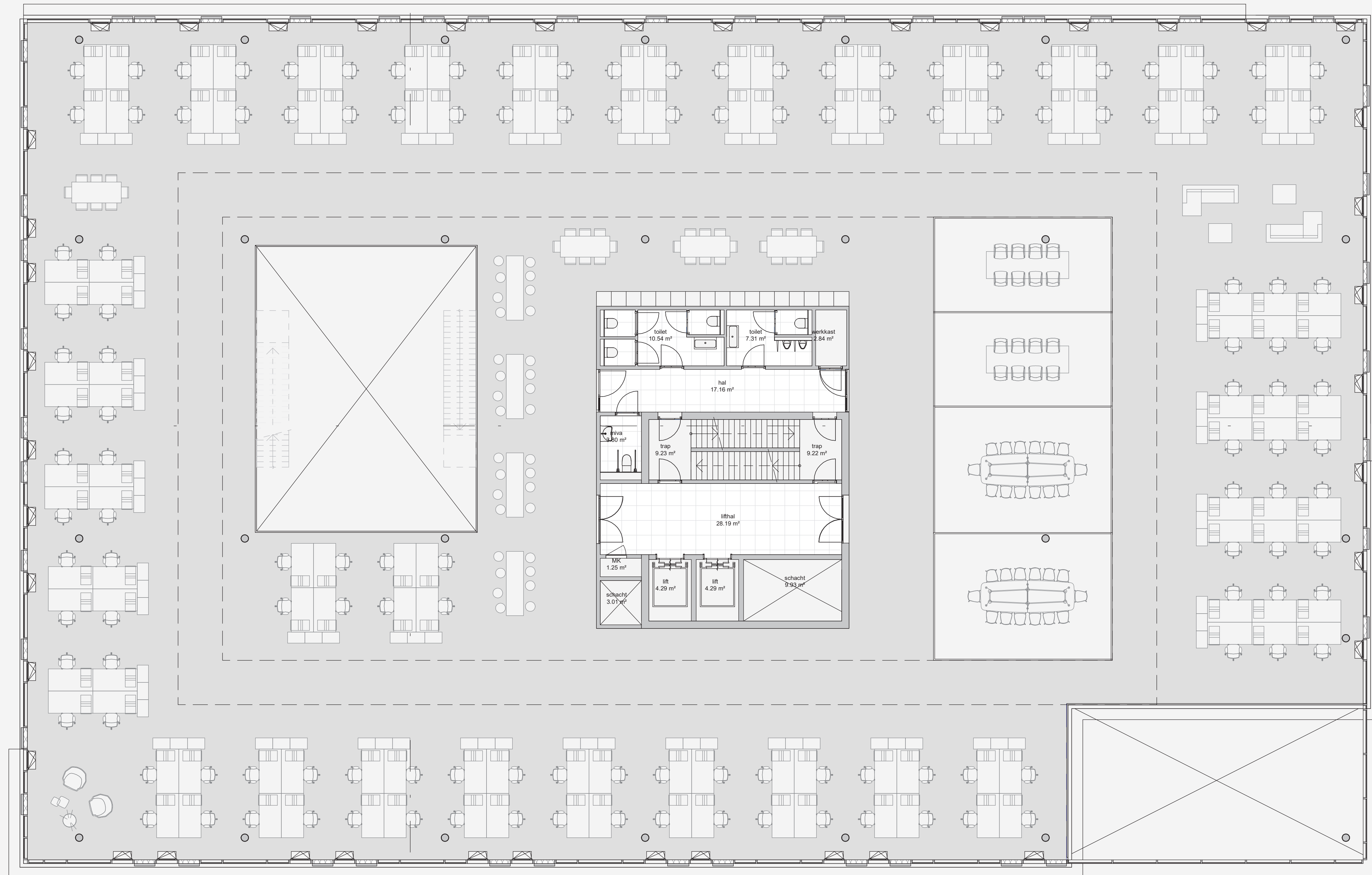
# Test-fit Second floor

GFA

1,683 SQM

LFA

1,601 SQM (95,1%)



# Test-fit Third floor

GFA

1,683 SQM

LFA

1,601 SQM (95,1%)



# The Campus could be **your** **workplace!**

No rights can be derived from the content of this pdf. These test-fits are based on the conceptual design and are indicative.

[welcometothecampus.com](http://welcometothecampus.com)

