



A. KARAMITSOS

www.karamitsos.com



lot 4070 (80%)

## PUBLIC AUCTION 595

*Stamps from all over the World*

**7 October 2017**

**HILTON ATHENS HOTEL**



# A. KARAMITSOS

34, Tsimiski Str. - 54623 Thessaloniki - GREECE  
tel.: +30 2310 264 366 - fax: +30 2310 274 031

www.karamitsos.com  
e-mail: karamitsos@karamitsos.gr

WORKING HOURS: 07:00 - 15:00

---

## Saturday, 7 October 2017

### PUBLIC AUCTION N° 595

*Stamps from all over the World*

### Start Time: 15:30

---

#### Viewing Arrangements:

##### **“Athens Auctions” Store**

Monday, 11 September 2017 - Friday, 6 October 2017

working hours:

Monday - Friday: 9:30 - 17:30

Saturday: 9:30 - 15:00

##### **“Hilton Athens” Hotel**

Saturday, 7 October 2017: 10:00 - 11:00

##### **“Hilton Athens” Hotel**

46, Vasilissis Sofias Ave. - Athens • tel.: +30 210 7281000 • fax: +30 210 7281111

##### **“Athens Auctions” Store**

Pindarou 7 & Alexandrou Soutsou 2 - Athens • tel.: +30 210 3250173 • fax: +30 210 3250176



Auction N°

**595**

# Α.ΚΑΡΑΜΙΤΣΟΣ

34, Tsimiski Str. - 54623 Thessaloniki - GREECE  
tel.: +30 2310 264 366 - fax: +30 2310 274 031

[www.karamitsos.com](http://www.karamitsos.com) • e-mail: [karamitsos@karamitsos.gr](mailto:karamitsos@karamitsos.gr)

Έλαβα γνώση των όρων της δημοπρασίας και παρακαλώ να πλειοδοτήσετε για λογαριασμό μου τους παρακάτω λαχνούς, μέχρι το ποσό που έχω σημειώσει αντίστοιχα.

Please bid on my behalf up to the limits, only if necessary, for the following lots. I have read and agree to the Conditions of Sale stated in the present Catalogue.

Name \_\_\_\_\_

Address \_\_\_\_\_

Client's code \_\_\_\_\_ Date \_\_\_\_\_

Phone \_\_\_\_\_ Fax \_\_\_\_\_

E-mail \_\_\_\_\_

Please limit my total purchase to € \_\_\_\_\_

Please send my lots

I will collect my lots from your store

Lot N°	Limit (€)	Lot N°	Limit (€)	Lot N°	Limit (€)



Lot N°	Limit (€)	Lot N°	Limit (€)	Lot N°	Limit (€)

**Payment**

By Credit Card (Visa  or MasterCard  )

Card N°

Valid to   /   CVV

Signature .....

Through PayPal to **paypal@karamitsos.gr**

(Please note that an additional 4% on the total purchase amount must be paid, due to PayPal transaction fees etc.)

**Cash**

(PLEASE USE **ALL** THE BANK ACCOUNT DETAILS BELOW)

**BANK:** EUROBANK ERGASIAS, THESSALONIKI, GREECE, K. DIEL BRANCH (030)

**IBAN:** GR96 0260 0300 0009 4020 1170 763

**SWIFT (BIC) CODE:** ERBKGRAA

## SYMBOLS - ABBREVIATIONS / ΣΥΜΒΟΛΑ - ΣΥΝΤΗΜΗΣΕΙΣ

F	See photo plate (b&w) / Βλέπε φωτογραφία (Α/Μ)
FC	See color photo / Βλέπε έγχρωμη φωτογραφία
**, u/m.	Unmounted mint / Ασφράγιστο χωρίς σαρνιέρα
*, m.	Mounted mint / Ασφράγιστο με σαρνιέρα ή ίχνος σαρνιέρας
(*), mng.	Mint without gum / Ασφράγιστο χωρίς γόμμα
o, u.	Used, cancelled / Σφραγισμένο
P	Forgery, fake / Πλαστό
pu	Postally used / Ταχυδρομημένο κανονικά
o. g.	Original gum / Γνήσια γόμμα
E	Essay of proof / Δοίμιο
S	Specimen / Δείγμα
W	Wrapper / Περιτύλιγμα (ράπερ)
EL	Entire letter / Επιστολή αναδιπλωμένη (χωρίς φάκελο)
C, cov.	Cover, envelope / Φάκελος
Δ	On fragment, on piece / Επί τεμαχίου (χαρτιού ή φακέλου)
PS	Postal stationery (card, letter card, print. envelope) / Ταχυδρ. μονόφυλλο (δελτάριο, βραχεία επιστολή, έντυπος φάκελος)
PPC	Picture postcard / Εικονογραφημένη κάρτα
RP	Real photograph, photocard / Φωτοκάρτα, πραγματική φωτογραφία
M	Map / Χάρτης
Hellas	HELLAS Greek catalogue / Κατάλογος ΕΛΛΑΣ
Fr.	FRANGOUDIS Cyprus catalogue / Κατάλογος Κύπρου ΦΡΑΓΚΟΥΔΗ
Yv.	YVERT & TELLIER French catalogue / Κατάλογος IBER
Mi.	MICHEL German catalogue / Κατάλογος MIXEL
SG.	S. GIBBONS British catalogue / Κατάλογος ΓΚΙΜΠΙΟΝΣ
AG.PA.	AGAOGULLARI PAPUÇCIOGLU Turkish Postmarks catalogue / Κατάλογος Τουρκικών Σφραγίδων ΠΑΠΟΥΤΣΙΟΓΛΟΥ
EST.	Our estimation / Προσωπική μας εκτίμηση
R, RR	Rare, very rare, etc. / Σπάνιο, πολύ σπάνιο κλπ.
wmk.	Watermark / Υδατόσημο
MS	Minitature or souvenir sheet / Μπλόκ φεγιέ
var.	Variety / Ποικιλία
trans.	Transit cancellation / Διαβατική σφραγίδα
G	Good quality or condition / Ανεκτή ποιότητα ή κατάσταση
F	Fine quality or condition / Καλή ποιότητα ή κατάσταση
VF	Very fine quality or condition / Πολύ καλή ποιότητα ή κατάσταση
B	Library book / Βιβλίο
doc.	Document / Έγγραφο
NEWS	Newspaper / Εφημερίδα
ENGR	Engraving / Γραβούρα
MAG	Magazine / Περιοδικό
EPH	Ephemera / Εφήμερα
BOND	Bonds & Certificates / Μετοχές
FFC	First Flight Cover / Φάκελος Πρώτης Πτήσης
MF	Military Flight / Στρατιωτική Πτήση
CF	Crash Flight / Αεροπορικά Ατυχήματα
CER	Ceramic / Κεραμικό
LABEL	Label / Ετικέτα
PC	Postal Cards / Επιστολικά Δελτάρια
PL	Postal Letter Cards / Βραχείες Επιστολές
PE	Postal Envelopes / Φάκελοι
PW	Postal Wrappers / Ταινίες Εντύπων
PO	Postal Money Orders / Ταχυδρομικές Επιταγές
PP	Parcel Postal Cards / Δελτίο Αποστολής Δεμάτων
PA	Aerograms, Air Letters / Αερογράμματα

## ΟΡΟΙ ΔΗΜΟΠΡΑΣΙΩΝ

Όλοι οι λαχνοί περιγράφονται προσεκτικά και πωλούνται ως γνήσιοι και αυθεντικοί εκτός αν περιγράφονται άλλως. Ο αγοραστής μπορεί να απορρίψει το λαχνό και να τον επιστρέψει εντός 7 ημερών (ημερομηνία σφραγίδας ταχυδρομείου) από την λήξη της δημοπρασίας, αν αποδείξει ότι δεν είναι γνήσιος ή ότι περιγράφηκε λανθασμένα. Οι λαχνοί πρέπει να επιστρέφονται όπως παραλήφθηκαν αρχικά, χωρίς καμία διαφοροποίηση. Λαχνοί που εξετάστηκαν προηγουμένως από τους υποψηφίους αγοραστές δεν επιστρέφονται. Επίσης δεν επιστρέφονται λαχνοί που αγοράστηκαν στην Αθήνα μετά την έξοδο των αγοραστών από αυτή. Οι αγοραστές δεν έχουν το δικαίωμα επιστροφής μικτών λαχνών, συλλογών, λαχνών που έχουν ελαττώματα σε μικροαξίες, καθώς και φωτογραφημένων στον κατάλογο λαχνών, για ελαττώματα ορατά στη φωτογραφία (κεντράρισμα, περιθώρια, οδόντωση). Όταν η αξία του λαχνού είναι στη σφραγίδα και όχι στο γραμματόσημο, ο λαχνός δεν μπορεί να επιστραφεί για ελάττωμα του γραμματισμού.

Κάθε λαχνός περιέχεται στον πλειοδότη, που προσφέρει την υψηλότερη τιμή. Σε περίπτωση ίσων ταχυδρομικών προσφορών, πλειοδότης θεωρείται αυτός που η προσφορά του έφθασε πρώτη στα Γραφεία μας. Τηλεφωνικές εντολές αγοράς γίνονται δεκτές από γνωστούς πελάτες, πρέπει όμως να επικυρωθούν γραπτώς.

Πριν από την έναρξη της πώλησως ή την ημέρα της δημοπρασίας (για γραπτές προσφορές), η Εταιρία έχει το δικαίωμα να αποσύρει λαχνούς, να διαχωρίσει λαχνούς σε δύο ή περισσότερα μέρη ή να συνενώσει δύο ή περισσότερους λαχνούς.

Μεγάλοι λαχνοί μπορεί να μην μεταφερθούν για viewing στην Αθήνα ή να μεταφερθούν κατ'επιλογή. Viewing λαχνών, που δεν μεταφέρονται στην Αθήνα, μπορεί να γίνει στα γραφεία στη Θεσσαλονίκη.

### Προσφορές γίνονται δεκτές έως 2 ώρες πριν από την έναρξη της δημοπρασίας.

Η πληρωμή πρέπει να γίνεται αμέσως μετά το τέλος της δημοπρασίας στην Αθήνα ή εντός 10 ημερών από την παραλαβή των λαχνών ή του τιμολογίου (για πελάτες Εξωτερικού). Σε αγοραστές εντός Ελλάδος οι λαχνοί αποστέλλονται επί αντικαταβολή και σε γνωστούς πελάτες χωρίς προπληρωμή, για πληρωμή αμέσως μετά την παραλαβή των λαχνών. Αν η πληρωμή καθυστερήσει πέραν των 10 ημερών, η Εταιρία διατηρεί το δικαίωμα να επιβαρύνει το λογαριασμό με το νόμιμο επιτόκιο. Η κορύπτητα των λαχνών παραμένει στον πωλητή, μέχρις ότου αποπληρωθεί ο λογαριασμός. Συμμετοχή αγοραστή στη δημοπρασία μπορεί να αποκλεισθεί, αν κατά την κρίση του πωλητού, ο αγοραστής δεν εκπληρώνει τους όρους της καλής πίστωσης.

Η ταχυδρόμηση των λαχνών ή του τιμολογίου γίνεται στην διεύθυνση, που φαίνεται στο έντυπο προσφορών. Τα έξοδα αποστολής βαρύνουν τον αγοραστή. Η απόδειξη παραλαβής "Συστημένου" του Ταχυδρομείου αποτελεί για την Εταιρία και απόδειξη παραλαβής του υλικού από τον αγοραστή.

Στην τιμή καταναλώσεως προστίθεται ποσοστό 18% για προμήθειά μας και επί πλέον ο αναλογών ΦΠΑ επί της προμήθειάς μας. Όλες οι τιμές στον κατάλογο είναι σε ΕΥΡΩ.

Αποίλητοι λαχνοί με τιμή εκκίνησης "OFFER" δεν διατίθενται προς πώληση μετά τη λήξη της δημοπρασίας.

Η τιμή πώλησης των λαχνών με την ένδειξη "OFFER" ορίζεται από το ποσό της προσφοράς, με κατοχύρωση του λαχνού στην υψηλότερη.

Ο πλειοδότης (είτε βρίσκεται στην Αθήνα, είτε έχει καταθέσει την προσφορά του μέσω τηλεφώνου/ email) είναι υπεύθυνος για την εξόφληση του τιμολογίου, εκτός αν έχει συνεννοηθεί γραπτώς ειδάλλως με την Εταιρία.

Οποιοσδήποτε λαμβάνει μέρος στη δημοπρασία είναι γνώστης των προαναφερομένων όρων και τους αποδέχεται πλήρως. Οποιαδήποτε διαφωνία μεταξύ των συμβαλλομένων μερών τίθεται στην κρίση και δικαιοδοσία του αρμοδίου Δικαστηρίου Θεσσαλονίκης.

## CONDITIONS OF SALE

*All descriptions are reliable and accurate and the lots are sold as genuine and authentic, unless the contrary is indicated. The purchaser may reject the lot and return it within 7 days (post office date stamp) after the end of the auction, if he proves it is not genuine or incorrectly described. The lots must be returned intact and as originally despatched. Lots which have been examined by the buyers before the auction cannot be returned. Also, lots purchased in the room cannot be returned after leaving the place. Buyers have no right to reject mixed lots, collections containing undescribed items, or described as having defects. Any illustration is part of the description and items cannot be returned for defects visible in it. When the value of a lot lies in the cancellation and not in the stamp, any defects of the latter shall not be a reason for rejecting the lot.*

*The highest bidder shall prevail. In case of equal mail bids, the earlier arrived will be considered as successful. Telephone bids are acceptable, but should be confirmed in writing.*

*Before start selling or the date of the auction the Auctioneer has the right to withdraw any of the lots, to divide it into two or more parts, or to join two or more lots into one.*

*Large lots may not be available for viewing in Athens unless especially selected. Viewing of those unavailable lots is still possible in our offices in Thessaloniki.*

### **Bids should be received at least 2 hours before the start of the Sale.**

*Payment must be made in full just after the end of the sale in the room, or within 10 days after receipt of our invoice. Foreign buyers can pay by credit card (we accept Visa and Mastercard) or by Bank Cheque, personal cheque and money order in foreign currency or in euro. Interest shall be payable by the purchaser on any overdue account. The Auctioneer has a discretion to waive payment of the interest. Title shall remain to A. KARAMITSOS until payment in full is received. Any buyer could be excluded if he is not a person of good faith, according to the Auctioneer's opinion.*

*The invoices and the lots will be mailed to the address given on the bidding form. Postage and insurance is charged to the buyers. The receipt for "Registered" letter by the Post Office constitutes delivery receipt for the Auctioneer.*

*A 18% buyer's commission will be added to the "hammer price" for each lot, plus the respective Value Additive Tax (VAT) on our commission. All prices expressed in the catalogue and all bids are in euro, unless otherwise is stated.*

*Unsold lots with starting price "OFFER" are not available for sale after the end of the auction.*

*The sale price of lots marked as "OFFER" is defined by the highest offer; highest bid wins the item at said price.*

*The bidder (either via mail or in the room) is responsible for the invoice's payment, unless otherwise agreed, in writing, with the company.*

*Anyone who will take part in this Auction is familiar to the conditions of sale and accepts them. Any dispute shall be subject to the jurisdiction of the competent Court in Thessaloniki, Greece.*





3001



3002



3003



3005



3004



3009



3007



3011



3006



3008



3010



3012



3013

## ALBANIA

3001	1913 "Double headed eagle & SHQIPENIA" violet overprint on 1pa. (blue) turkish stamp (1908), u/m. (Mi.7).	**	80 €
3002	Provisional Vlore Government (1913-1914): 3rd Prov. issue, 16 June 1913 "Eagle" ovpts, 2-1/2pi. dull sepia Turkish stamp (Mi.139A) handstamped in black with a double-headed "Eagle & SHQIPENIA", used. (Mi. 9-800E).	o	160 €
3003	June 1913, Vlore Government of Albania issue "Double headed Eagle & SHQIPENIA" black ovpt. on Turkish stamps, (1909) 5pi. dull lilac used. (Mi. 10-1100E).	o	200 €
3004	1913 "Double headed eagle & SHQIPENIA" black overprint on ovpt. 2pa. (red) turkish stamp (1908), u. (Mi. 13-950E).	o	190 €
3005	1913 "Double headed eagle & SHQIPENIA" black overprint on ovpt. 1pa. (light blue) turkish stamp (1908), u. (Mi.14-1700E).	o	340 €
3006	Provisional Vlore Government (1913-1914): 3rd Prov. issue, 16 June 1913 "Eagle" ovpts, 10pa./20pa. red Turkish stamp (Mi.161IIC) handstamped in black with a double-headed "Eagle & SHQIPENIA", used on fragment. Signed Calves, Prendushi & Freyse. (Mi. 16-1200E).	Δ	240 €
3007	28.11.1913 Issue, complete set of 5 values, mng. (Mi. 24/28).	(*)	9 €
3008	1913 Skenderbeu, complete set of 6 values, m. (Mi. 29/34).	*	12 €
3009	1914 "7 Mars" ovpt on Skenderbeu stamps, complete set of 6 values on fragment canc. "VLONE*7.3.1914". (Mi. 35/40).	o	60 €
3010	1914 Prince W. von Wied, complete never issued set of 7 values, u/m. VF. (Mi. IIa/IIg).	**	27 €
3011	15.1.1919 Surcharges on Austrian administration stamps, complete set of 6 values, u. 05q/16h cto, 4 stamps signed. (Mi. 471/521).	o	12 €
3012	16.1.1919 Surcharges on Austrian administration stamps, complete set of 6 values, u. (Mi. 47II/52II).	o	40 €
3013	25q/64h 16.1.1919 Surcharges on Austrian administration stamps (eagle type I), u. (Mi. 50IIa-250E).	o	50 €



3014



3015



3016



3017



3018



3020



3019



3021



3022

- |      |   |     |       |
|------|---|-----|-------|
| 3014 | 1919 Definitives, complete set of 7 values on a large fragment canc. "DURRES*1.2.20". (Mi. 60/66-85E).  | o   | 18 €  |
| 3015 | 1920 Definitives, ovpt on 1914 never issued stamps, complete set of 9 values. 5/10q+25/10q+25q+50/10q hinged, the rest u/m. (Mi. 67/75).  | **  | 120 € |
| 3016 | 1920 Skenderbeu and double headed eagle, complete set of 6 values in u/m imperforate pairs without control mark. Trial printings. (Mi. 76/81).  | E   | 25 €  |
| 3017 | 1920 Skenderbeu and double headed eagle, complete set of 6 values (control mark type I) on cover canc. "TIRANE*4.10.20". (Mi. 76I/81I-150E).  | C   | 35 €  |
| 3018 | 1922 Skenderbeu and double headed eagle, complete set of 6 values (control mark type II). 1Fr hinged, the rest used. Also 5+10q with type III control mark plus 1922 1q/2q surcharged stamp m. (Mi. 76II/81II+77III/78III+82-130E). | o/* | 20 €  |
| 3019 | 1922 definitives, complete set of 7 values in u/m imperforate pairs. Possible trace of hinge on one 50q and one 2F stamps. VF. (Mi. 83U/89U-1000E).   | **  | 200 € |
| 3020 | 1924 "TIRANE KALLNUER" ovpt, complete set of 4 values, u/m. (Mi. 90/94).  | **  | 25 €  |
| 3021 | 1924 Red Cross Surcharges (I), complete set of 4 values, m. (Mi. 96/99).  | *   | 12 €  |
| 3022 | 1924 Red Cross Surcharges (II), complete set of 4 values, m. (Mi. 100/103).   | *   | 12 €  |
| 3023 | 1925 "Triumfi legalitetit/24 Dhetner 1924" ovpt, complete set of 7 values, u. (Mi. 104/110).  | o   | 18 €  |



3023



3025



3026



3032



3033



3034



3024



3027



3028



3029



3030



3031

- |      |  |     |      |
|------|--|-----|------|
| 3024 | 1925 "Republika Shqiptareit/21 Kallnduer 1925" ovpt, complete set of 7 values on fragment canc. "TIRANE*14.4.25". (Mi. 111/117). | o   | 20 € |
| 3025 | 1925 Airmails, complete set of 7 values, u/m. (Mi. 126/132).   | **  | 15 € |
| 3026 | 1927 "Rep. Shqiptare" ovpt on 1925 airmails, complete set of 7 values, u/m. (Mi. 144/150).                                       | **  | 17 € |
| 3027 | 25 Aug 1928 Issue, complete set of 8 values, m. (Mi. 171/178).   | *   | 10 € |
| 3028 | 1928 Coronation, complete set of 9 values, m. Most heavily hinged. (Mi. 179/187).  | *   | 18 € |
| 3029 | 1928 Definitives, complete set of 11 values, m. (Mi. 188/198).   | *   | 7 €  |
| 3030 | 1929 Kings birthday, complete sets of 8 values, m. (Mi. 202/209).  | *   | 15 € |
| 3031 | 1929 Kings birthday, complete sets of 8 values on cover canc. "VLONE*8.X.29" (1st day of issue). (Mi. 202/209).                  | FDC | 50 € |
| 3032 | 1930 King Zogu airmails, complete set of 7 values, m. (Mi. 228/234).   | *   | 8 €  |
| 3033 | 1931 1st Titana-Rome, complete set of 7 values, m. (Mi. 235/241).  | *   | 27 € |
| 3034 | 1934 "1924-1934/24 Dhetuer" ovpt, complete set of 10 values, m. (Mi. 242/251).   | *   | 18 € |



3035



3036



3037



3039



3038



3041



3040



3042



3043

3035	1937 25th Independence anniversary, complete set of 12 values. 1q+2Fr hinged, the rest u/m. (Mi. 252/260+261/263).	**/*	12 €
3036	1938 Royal wedding, complete set of 8 values, m. (Mi. 264/271).	*	3 €
3037	1938 Kingdoms 10th anniversary, complete set of 8 values, u/m. (Mi. 274/281).	**	10 €
3038	1938 Royal wedding m/s, u/m. (Mi. Bl.2).	**	12 €
3039	1q 1938 Kingdoms 10th anniversary in u/m vertical pair imperforate in middle. (Mi. 274Avar).	**	OFFER
3040	1938 Kingdoms 10th anniversary m/s canc. "TIRANE*24.IX.38". (Mi. Bl.3).	o	35 €
3041	1939/40 Definitives, complete set of 15 values, u/m. (Mi. 298/312-250E).	**	50 €
3042	1940 Airmails, complete set of 9 values, m. (Mi. 313/321).	*	12 €
3043	1942 Three Years Kingdon in union with Italy, complete set of 7 values, u/m. (Mi. 322/328).	**	6 €



3044



3047



3045



3048



3046



3050



3051



3052



3053



3049



3054



3055



3056



3057



3058



3059

- |      |   |      |       |
|------|---|------|-------|
| 3044 | 1945 "QEVERIJA DEMOKRAT. E SHQIPERISE 22-X-1944" ovpt, complete set of 9 values, u/m. (Mi. 359/367).  | **   | 13 €  |
| 3045 | WWII German Occupation: 1943 "14 Shtator 1943" ovpt, complete set of 14 values 225Q airmail+3q+25q with trace of hinge, the rest u/m. Most of the stamp signed. (Mi. 1/14). | **/* | 75 €  |
| 3046 | WWII German Occupation: 1944 Issue, complete set of 7 values, u/m. (Mi. 15/21).   | **   | 15 €  |
| 3047 | WWII German Occupation: 25+10q 1944 Issue in u/m vertical pair with full and strong decalque. (Mi. 18).   | **   | OFFER |
| 3048 | 1945 Peoples army 2nd anniversary, complete set of 7 values, m. (Mi. 368/374).  | *    | 8 €   |
| 3049 | 1945 Definitives, complete set of 6 values. 1Fr hinged, the rest u/m. (Mi. 379/384).  | **/* | 5 €   |
| 3050 | 1946 Red Cross Congress, complete set of 6 values, m. (Mi. 385/390).  | *    | 10 €  |
| 3051 | 10.1.1946 Ovpt issue, complete set of 6 values, u/m. (Mi. 396/401).   | **   | 10 €  |
| 3052 | 1.7.1946 Ovpt issue, complete set of 6 values, u/m. (Mi. 402/407).  | **   | 10 €  |
| 3053 | 1.7.1946 Ovpt issue, complete set of 6 values, u. (Mi. 402/407).  | o    | 13 €  |
| 3054 | 1930 Postage dues, complete set of 4 values, m. (Mi. 30/33).  | *    | 7 €   |

### AUSTRIA

- |      |   |    |       |
|------|---|----|-------|
| 3055 | 1905 and 1906/07 F. Joseph issues, 2 complete sets of 14+6 values, m. VF. (Mi. 119/132+133/138-275E). | *  | 64 €  |
| 3056 | 1908 F. Josephs reign 60th anniversary, complete set of 18 values, m. (Mi. 139v/156w-400E).           | *  | 100 € |
| 3057 | 1910 F. Josephs 80th birthday, complete set of 17 values, u/m. (Mi. 161/177-600E for hinged set).     | ** | 300 € |
| 3058 | 1910 F. Josephs 80th birthday, complete set of 17 values, m. (Mi. 161/177-600E).                      | *  | 150 € |



3059	1916 Coat of arms (25x30), complete set of 2 values, u/m. (Mi. 200I/203Ia).	**	40 €
3060	1917 Coat of arms, complete set of 4 values, u/m. (Mi. 204I/207I).	**	120 €
3061	2Kr 1917 Coat of Arms (26x29) perf. 11 1/2, m. (Mi. 208IIB-1100E).	*	200 €
3062	1918 Airmail issue (on both types of paper), complete set of 3 + 3 values. (Mi. 225x/227x+225y/227y).	**/*	12 €
3063	1921 "Hochwasser/1920" ovpt, complete set of 20 values. (Mi. 340/359).	**/*	8 €
3064	2kr 1922 Airmail never issued stamp, u/m. (Mi. III-80E).	**	20 €
3065	1922 Austrian musicians, complete set of 7 values, m. (Mi. 418A/424A).	*	9 €
3066	1922 Airmail issue, complete set of 8 values, m. (Mi. 425/432).	*	5 €
3067	1923 Main cities, complete set of 9 values, u/m. (Mi. 433/441-100E).	**	22 €
3068	1924 Struggle against TB, complete set of 5 values, u/m. (Mi. 442/446-75E).	**	16 €
3069	1925 Definitive issue, complete set of 21 values, u/m. (Mi. 447/467-230E).	**	55 €
3070	1925 Airmail issue, complete set of 20 values, u/m. (Mi. 468/487-400E).	**	100 €
3071	1928 Republik 10th anniversary, complete set of 4 values, u/m. (Mi. 494/497-45E).	**	10 €
3072	1929 Landscapes, complete set of 14 values, u/m. (Mi. 498/511-750E).	**	180 €
3073	4.10.1930 issue, complete set of 6 values, u/m. (Mi. 512/517-160E).	*	30 €
3074	1931 Rotary convention, complete set of 6 values, u/m. (Mi. 518/523-700E).	**	170 €
3075	1931 Austrian poets, complete set of 6 values, u/m. (Mi. 524/529-200E).	**	50 €
3076	1932 Landscapes, complete set of 13 values, u/m. (Mi. 530/543-950E).	**	220 €



3076



3078



3081



3082



3079



3084



3085



3089



3080



3086



3087



3083



3088



3090

3077	50g+(50g) 1932 I.Seipel, u/m. (Mi. 544-30E).	**	8 €
3078	1932 Austrian painters, complete set of 6 values, u/m. (Mi. 545/550-320E).	**	80 €
3079	1933 FIS Games, complete set of 4 values, u/m. (Mi. 541/554-600E).	**	150 €
3080	2X50g+50g 1933 WIPA in both types of paper, complete set of 2 values, u/m. (Mi. 555A/556A-1000E).	**	220 €
3081	1933 Struggle against the Turks (1683), complete set of 6 values, u/m. (Mi. 557/562-440E).	**	100 €
3082	1933 Surcharges, complete set of 4 values, u/m. (Mi. 563/566-95E).	**	22 €
3083	10S 1936 E.Dollfuss stamp, m. (Mi. 588-900E).	*	180 €
3084	1934 Austrian architects, complete set of 6 values, u/m. (Mi. 591/596-150E).	**	35 €
3085	1935 Airmail issue, complete set of 15 values, u/m. (Mi. 598/612-160E).	**	40 €
3086	1935 Surcharges, complete set of 3 values, u/m. (Mi. 613/616-100E).	**	22 €
3087	1935 Austrian army commanders, complete set of 6 values, u/m. (Mi. 617/622-150E).	**	35 €
3088	1936 FIS Games, complete set of 4 values, u/m. (Mi. 623/626-160E).	**	40 €
3089	1936 Austrian scientists, complete set of 6 values, u/m. (Mi. 632/637-50E).	**	12 €
3090	1937 Austrian doctors, complete set of 9 values, u/m. (Mi. 649/657-45E).	**	10 €



3091



3092



3093



3094



3095



3096



3097



3099



3098



3100



3101



3104



3102



3103



3105



3106



3107



3108

3091	22/5-9/6/45 "Österreich" ovpt on D.Reich Hitler stamps, complete sets of 19+4 values. 9.6.1945 issue u/m. (Mi. 674/692+639II/696II).	*/**	125 €
3092	22/5-9/6/45 "Österreich" ovpt on D.Reich Hitler stamps, complete sets of 19+4 values, m. (Mi. 674/692+639II/696II).	*	50 €
3093	22/5/45 "Österreich" ovpt on D.Reich Hitler stamps, complete sets of 19 values, u/m. (Mi. 674/692-150E).	**	35 €
3094	22/5/45 "Österreich" ovpt on D.Reich Hitler stamps, complete sets of 19 values, m. (Mi. 674/692).	*	12 €
3095	6/9/45 "Österreich" ovpt on D.Reich Hitler stamps, complete sets of 4 values (type I), u/m. (Mi. 693I/696I-750E).	**	170 €
3096	1946 K.Renner, complete set of 4 values imperforate, u/m. (Mi. 772B/775B-280E).	**	65 €
3097	1948-1952 Costumes, 2 complete sets of 34+3 values, u/m. (Mi.893/926+978/980-380E).	**	85 €
3098	1949. Prisoners of War and Returnees care, complete set of 4 values, u/m. VF. (Mi. 937/940 - 45 euros).	**	11 €
3099	1949 UPU's 75th anniversary, complete set of 3 values, u/m. (Mi. 943/945).	**	5 €
3100	1950 30 years referendum, complete set of 3 values, u/m. (Hellas 952/954-110E).	**	27 €
3101	1950 Birds, complete set of 2 values and 2X20s 1952 eagle airmail stamps, u/m. (Hellas 955/956+958x+958y-44E).	**	11 €
3102	1894 Postage dues, complete set of 9 values, m. (Mi. 1/9-70E).	*	17 €
3103	1900 Postage dues, complete set of 12 values, m. (Mi. 22/33-60E).	*	15 €
3104	1908/13 Postage dues, complete set of 11 values, m. (Mi. 34/44-70E).	*	17 €
3105	1922 Postage dues, complete set of 14 values, u/m. (Mi. 118/131-125E).	**	30 €





3109



3110



3111



3116



3112



3113



3114



3117



3115



3118



3119



3120



3121



3122

3106	1925/34 Postage dues, complete set of 27 values, u. (Mi. 132/158).	*	70 €
3107	1935 Postage dues, complete set of 16 values, u/m. (Mi. 159/174-70E).	**	18 €
3108	1914/16 Issue for Bosnia ovpt "SERBIEN", complete set of 21 values, m. (Mi. 1/21-320E).	*	80 €
<b>BELGIUM</b>			
3109	20c 1849 King Leopold, u. VF. (Mi. 2).	o	14 €
3110	20c blue (Epaulette) 1849 King Leopold I, plate flaw line through "VINGT" (COB 2-V1-220 Euros), good/large margins all around, fresh color, u. VF. (Mi. 2a).	o	45 €
3111	1c greyish black 1866 Coat of arms, u. (Mi.19-150E).	o	35 €
3112	1911 Struggle against TB, complete set of 8 values. 2c high value stamp hingrd, the rest u/m. (Mi. 81II/88II).	*/**	70 €
3113	1911 Charleroi Exhibition and struggle against TB, complete set of 8 values, u/m. (Mi. 81III/88III).	**	40 €
3114	1914 Red Cross, complete set of 3 values, u. (Mi.104/106-60E).	o	8 €
3115	1918 Red cross ovpt, complete set of 14 values, u/m. (Mi.129/142-1100E for a hinged set).	**	450 €
3116	King Albert I with helmet in complete set of 14 values, m. VF. (Michel 145/158).	*	170 €
3117	1925 Belgian stamp 75th anniversary, complete set of 13 values, m. (Mi. 191/203).	*	17 €
3118	1928 Orval (I), complete set of 14 values, u/m.	**	52 €
3119	1928 Antwerp Philatelic Exhibition handstamp on Orval I issue, complete set of 9 values, m (trace). (Mi. 235II/243II).	*	180 €
3120	1929 "19-8-1929" on Orval I issue, complete set of 9 values, m. (Mi. 235I/243I).	*	200 €
3121	1928 Struggle against TB, complete set of 6 values, u/m. (Mi. 244/249-100E).	**	22 €
3122	King Albert I issue in complete set of 5 values, u. (Michel 262/265).	o	22 €



3123



3124



3126



3133



3127



3125



3131



3134



3129



3130



3128



3132



3136



3139



3140



3141



3142

3123	1929+1931 Express stamps, 2 complete sets of 4+1 values, u/m. (Mi. 266/269+304-130E).	**	27 €
3124	1929 Struggle against TB, complete set of 6 values, u/m. (Mi. 270/275-90E).	**	20 €
3125	4fr 1930 Antwerp philatelic Exhibition, u/m. (Mi. 287-110E).	**	25 €
3126	1930 B.I.T., complete set of 3 values, u/m. (Mi. 288/290).	**	17 €
3127	1930 Struggle against TB, complete set of 7 values, u/m. (Mi. 291/297-160E).	**	40 €
3128	1931 King Albert I, complete set of 9 values, u/m. (Mi. 305/313-350E).	**	75 €
3129	2.45F+55c 1931 Brussels Philatelic Exhibition, m. (Mi. 314).	*	10 €
3130	1931 Struggle against TB, complete set of 7 values, m (heavy hinge). (Mi. 315/321).	*	15 €
3131	3.50F/2.75F 1932 Express stamp, u/m. (Mi. 325-65E).	**	13 €
3132	1.6.1932 issue, complete set of 6 values, u/m. (Mi. 326/331).	**	4 €
3133	1932 Kardinal D.Mercier, complete set of 9 values. 10F+40F high value u/m and with impressive and intense natural paper folding. (Mi. 333/341).	*/**	200 €
3134	1932 Kardinal D.Mercier handstamp ovpt issue, complete set of 9 values, m (trace). (Mi. 333I/341I).	*	500 €
3135	1932 Infantry monument, complete set of 2 values, m. (Mi. 342/343).	*	50 €



3136	1932 FNRS, complete set of 3 values, u/m. (Mi. 344/346).	**	25 €
3137	1932 Struggle against TB, complete set of 7 values, m. (Mi. 347/353).	*	35 €
3138	1933 Orval (II), complete set of 12 values, u/m. (Mi. 354/365-2200E).	**	400 €
3139	1933 Struggle against TB, complete set of 7 values, m. (Mi. 366/372).	*	100 €
3140	1933 Struggle against TB, complete set of 7 values imperforate, m. (Mi. 366/372).	*	200 €
3141	1934 1935 Brussels International Exhibition, complete set of 4 values, m. (SG 378/381).	*	6 €
3142	1934 International Exhibition Brussels, complete set of 4 values imperforate, m. (Mi. 378/381).	*	32 €
3143	1934 King Leopold III, 3 complete sets of 2+2+2 values, m. (Mi. 382/385+393/395).	*	15 €
3144	1934 Struggle against TB, complete set of 7 values, m. (Mi. 386/392).	*	32 €
3145	1935 National Children committee and SITEB, 2 complete sets of 3+3 values, m. (Mi. 396/398+402/404).	*	4 €
3146	1935 Airmail issue, complete set of 2 values, u/m. (Mi. 399/400-45E).	**	11 €
3147	1935 SITEB, complete set of 3 values imperforate, m. (Mi. 402/404).	*	65 €
3148	5Fr+5Fr 1935 SITEB, stamp from the m/s, u/m. (Mi. 405).	**	32 €
3149	1935 Queen Astrid mourning issue, complete set of 8 values, u/m. (Mi. 407/414).	**	5 €
3150	70c+30c 1936 Borgerhout Philatelic Exhibition, stamp from m/s, u/m. (Mi. 432).	**	12 €
3151	1936 Struggle against TB, complete set of 7 values imperforate ovpt Specimen, m. (Mi. 434/441).	S	65 €
3152	1937 Queen Astrid, complete set of 8 values imperforate ovpt Specimen, m. (Mi. 443/450).	S	55 €
3153	1937 Queen Elisabeth, complete set of 2 values imperforate ovpt Specimen, m. (Mi. 453/454).	S	32 €



3154

3158

3160



3155

3156

3159

3163



3164

3165

3167



3157

3161

3162

3166

3168

3154	2.45F+7.55F 1938 King Albert and Nieuwpoort monument, stamp from the m/s, u/m. (Mi. 465).	*	4 €
3155	1938 European airmail conference, complete set of 5 values, u/m. (Mi. 466/470-20E).	**	5 €
3156	1938 Koekelberg church, complete set of 7 values plus 5F+5F stamp from the m/s, u/m. (Mi. 471/478).	**	15 €
3157	1938 Struggle against TB, complete set of 8 values, m. (SG 489/496).	*	6 €
3158	1939 Belgian Red Cross, complete set of 8 values, m. (SG 497/504).	*	3 €
3159	1939 Rubens, complete set of 8 values, u/m. (Mi. 506/513).	**	27 €
3160	1939 Orval (III), complete set of 6 values plus 75c+75c Memling stamp exhibition, u/m. (Mi. 505+514/519).	**	18 €
3161	1940 Struggle against TB, complete set of 8 values, u/m. (Mi. 520/527).	**	13 €
3162	1940 Queen Elisabeths music hall, complete set of 6 values, m. In addition 10F+15F 1941 same design stamp from the m/s, u/m. (Mi. 529/534+595).	*/**	6 €



3170



3173



3169



3171



3172



3174



3175

3163	1941-1942-1943 St Martin (I), (II) (IV) and (V), 3 complete sets of 10+2+8 values plus the stamp from the m/s, u/m. (Mi. 582/591+599+624/625+648/655).	**	8 €
3164	1947 In profit of war victims, complete set of 5 values, u/m. (Mi. 793/797-55E).	**	13 €
3165	1948 Struggle against TB, complete set of 5 values, u/m. (Mi. 830/834-50E).	**	12 €
3166	1950 European championship, complete set of 5 values, u/m. (Mi. 867/871-80E).	**	16 €
3167	1951 Roayl Aero-club, complete set of 2 values in u/m se-tenant strip of 3 including label. (Mi. 902/903).	**	16 €
3168	1951 Monuments, complete set of 2 values, u/m. (Mi. 906/908-50E).	**	12 €
3169	1951 Queen Elisabeth, complete set of 5 values, u/m. (Mi. 909/913-100E).	**	22 €
3170	1952 Koekelberg, complete set of 3 values in u/m corner bl.4. (Mi. 922/924).	**	28 €
3171	1952 World Post congress, complete set of 12 values, u/m. (Mi. 929/940-300E).	**	75 €
3172	1952 Writers, complete set of 6 values, u/m. (Mi. 941/946-90E).	**	18 €
3173	1952 Writers, complete set of 2 values in 2 pairs each one with a label, u/m. (Mi. 947/948-120E).	**	30 €
3174	1952 Stuggle against TB, complete set of 8 values, u/m. (Mi. 952/959-60E).	**	15 €
3175	1953 European Youth Bureau, complete set of 3 values, u/m. (Mi. 976/978-65E).	**	15 €



3178



3177



3180



3179



3176



3184



3181



3182

3176 1953 Struggle against TB, complete set of 8 values in u/m corner bl.4. (Mi. 979/986).

\*\* 52 €

3177 Committee for the National Monument King Albert I issue, complete set of 3 values, u/m. (Michel 989/991-60E).

\*\* 14 €



- 3178 Inauguration of the monument in honor of political prisoners in Breendonk issue in complete set of 3 values, u/m. (Michel 992/994-110E). \*\* 24 €
- 3179 Renovation of the beguinage of Bruges issue in complete set of 6 values, u/m. (Michel 995/1000-160E). \*\* 37 €
- 3180 1955 Struggle against TB, complete set of 7 values, u/m. (Mi. 1028/1034-65E). \*\* 15 €
- 3181 5F 1924 International Stamp Exhibition, Albert I in sheetlet of 4, m. (Mi. 186). \* 40 €
- 3182 1930 Anvers Philatelic Exhibition m/s. Staple holes and cachet at the edge as always, m. (Mi. Bl.1). \* 90 €
- 3183 1931 Brussel Philatelic Exhibition m/s, m. Cachet at the blocks edge as usual. (Mi. Bl.2). \* 70 €
- 3184 1935 SITEB m/s, m. (Mi. Bl.3). \* 50 €
- 3185 1936 Philatelic Exhibition, Borgerhout m/s, m. (Mi. Bl.4). \* 25 €
- 3186 1936 Charleroi National Philatelic Exhibition m/s, m. (Mi. Bl.5). \* 15 €
- 3187 1937 Queen Elisabeth Music Foundation m/s, m. (Mi. Bl.6). \* 12 €



3189



3188



3191



3190



3192



3193

- 3188 1938 King Albert monument m/s, u/m. (Mi. Bl.7-50E). o 10 €
- 3189 1942 Orval m/s perforate and imperforate, both private issue "1142-1942" with control number. Format 120x76mm, u/m. (Mi. Bl.III.I+IV.II-130E). \*\* 32 €
- 3190 1960 World Refugee Year m/s, u/m. (Mi. Bl.26-75E). \*\* 18 €
- 3191 1929/32 "JOURNAUX/DAGBLADEN" ovpt on newspaper parcel post issue, complete set of 22 values, m. (Mi. 20/31). \* 32 €
- 3192 1920 "Malmedy" ovpt on Belgian stamps, complete set of 14 values, u/m. 1Fr+5Fr with small yellow toning. (Mi. 1/14-410E). \*\* 80 €

**CZECHOSLOVAKIA (FORMER)**

- 3193 Military post (Legion in Siberia): 1920 ovpt and new value, set of 6 values (3k+25k+35k are missing), m. (Mi. 9+10/13+16/17). \* 50 €

**FRANCE**

- 3194 1F 1849 carmine-brown Ceres (REPUBLIC), u. VF. (Yv. 6B-1000E). o 250 €
- 3195 10c bistre-brown 1852 Napoleon (REPUBLIC), u. VF. (Yv.9a-900E). o 220 €
- 3196 1c 1860 olive Napoleon (EMPIRE), u. VF. (Yv. 11-90E). o 23 €
- 3197 1F 1853 carmine Napoleon (EMPIRE), very large/evan margins all around, u. SUPERB. (Yv. 18-3250E). o 850 €
- 3198 10c 1862 bistre Napoleon (REPUBLIC) perforate, m. (Yv. 21-2200E). \* 550 €





3199	2c 1870 light red brown Napoleon (EMPIRE) perforate ovpt "SPECIMEN", m. (Yv. 26Be-400E).	*	100 €
3200	4c 1866 grey Napoleon (EMPIRE) perforate ovpt "SPECIMEN", m. (Yv. 27Bg-400E).	*	100 €
3201	5F 1868 grey Napoleon (EMPIRE), u. (Yv. 33-1100E).	o	220 €
3202	1c 1870 olive Ceres (Bordeaux), u. (Yv. 39B-200E).	o	65 €
3203	2c 1870 brown-rose Ceres (Bordeaux), u. (Yv. 40B-330E).	o	75 €
3204	4c 1870 grey Ceres (Bordeaux), u. VF. (Yv. 41B-325E).	o	80 €
3205	5c 1870 green-yellow Ceres (Bordeaux), u. Superb. (Yv. 42B-180E).	o	50 €
3206	10c 1871 bistre-yellow Ceres, u. Superb. (Yv. 43B-100E).	o	30 €
3207	30c 1870 brown-yellow Ceres (Bordeaux), u. VF. (Yv. 47-250E).	o	60 €
3208	40c 1870 orange Ceres, u. Superb. (Yv. 48-130E).	o	35 €
3209	80c 1870 rose Ceres, u. Superb. (Yv. 49-320E).	o	80 €
3210	80c 1872 rose Ceres perforate, m. (Yv. 57-1200E).	*	300 €
3211	4c 1876 Sage green, m. (Yv. 63-220E).	*	50 €
3212	10c green (I) sage 1876, m. Certificate Roumet (1998). (Yv. 65-1200E).	*	300 €
3213	75c rose (I) sage 1876, m. (Yv. 71-1400E).	*	350 €
3214	25c 1876 Sage ultramarine, m. A soft tiny yellow spot on a perf. (Yv. 78-650E).	*	100 €
3215	75c rose (II) sage 1885, m. (Yv. 81-2750E).	*	650 €
3216	20c 1884 Sage brick on green (type II) in left marginal imperforate bl.4. Lower pair u/m. VF. (Yv. 96b/price for hinge bl.4 perf. = 350E).	**	100 €



3217



3218



3219



3220



3221



3222



3223



3224



3225



3226

3217	Sage: 75c 1890 violet on orange, m. (Yv. 99-375E).	*	90 €
3218	1902 Type Mouchon, complete set of 5 values, m. (Yv. 124/128-627E).	*	150 €
3219	25c blue + 30c lilac 1903 Semeuse, m. (Hellas 132+133-280E).	*	45 €
3220	2fr 1907 Merson orange and greenish blue with displaced center (intense), u. (Yv. 145f).	*	75 €
3221	1914 Red Cross, complete set of 2 values, u/m. (Yv. 146/147-108E).	**	22 €
3222	1922 Au profit des Orphelins de la guerre, complete set of 8 values, u/m. (Yv. 162/169-530E).	**	125 €
3223	1926-27 Au profit des orphelins de la guerre (surcharges), complete set of 4 values, m. VF. (Yv. 229/232-210E).	*	50 €
3224	1f10 Semeuse 1927 in u/m strip of 3. Date corner "1.9.27". (Hellas 238-115E).	**	20 €
3225	3F 1927 Merson in u/m lower right corner bl.4. (Yv. 240-680E+).	**	150 €
3226	50c+1.50F 1928 Au profit de la Caisse d'Amortissement in corner dated 19.9.28. A trace of hinge on lower margin, stamps u/m. (Yv. 251-450E).	**	100 €
3227	1.50+8.50F 1928 Au profit de la Caisse d'Amortissement, m. (Yv. 252-180E).	*	37 €
3228	1.50+3.50F 1930 Au profit de la Caisse d'Amortissement, m. (Yv. 256-100E).	*	22 €
3229	1933 Celebrities, complete set of 3 values, u/m. VF. (Yv 291/293-140E).	**	35 €
3230	1935 Au profit des Chomeurs intellectuelles, complete set of 2 values, u/m. (Yv. 307/308-141E).	**	32 €
3231	1936 Au profit des Chomeurs intellectuels, complete set of 4 values in u/m lower left corner bl.4 dated 22.10.36 (330), 5.8.36 (331), 12.8.36 (332) and 27.10.36 (333). (Yv. 330/333).	**	135 €
3232	1.75F+75c 1938 Versailles in u/m corner copy dated 13.4.37. (Yv. 379-175E).	**	40 €
3233	20f/50f 1941 Surcharge stamp (Yv398), m. (Yv. 493-45E).	*	10 €
3234	1941 Au profit de secours national, complete set of 12 values imperforate, m. (Yv. 526/537-185E).	*	45 €
3235	1942 Legion tricolore, complete set of 2 values, u/m. (Yv. 565/566).	**	5 €



3231



3227



3228



3229



3232



3230



3234



3233



3237



3236



3235



3239



3238

- |      |   |    |      |
|------|---|----|------|
| 3236 | 1946 Celebrities of XV century, complete set of 6 values in u/m bl.6. (Yv. 765/770-78E).          | ** | 16 € |
| 3237 | 1950 Celebrities of the 18th century (II), complete set of 6 values, u/m. (Yv. 867/872-96E).      | ** | 22 € |
| 3238 | 1951 Celebrities of the 19th century, complete set of 6 values in pairs, u/m. (Yv. 891/896-120E). | ** | 30 € |
| 3239 | 1952 Celebrities of the 19th century (II), complete set of 6 values, u/m. (Yv. 930/935-60E).      | ** | 15 € |



3240



3242



3243



3244



3241



3248



3249



3251



3257



3245



3246



3247



3250



3252



3253



3254



3255



3256

3240	1955 Celebrities of XII and XX century, complete set of 6 values in u/m lower left corner bl.4. (Yv. 1027/1032-640E).	**	150 €
3241	1955 Celebrities du XIIe au XX siecles, complete set of 6 values, u/m. (Yv.1027/1032-160E).	**	40 €
3242	1957 Celebrities of XIII and XIX century, complete set of 6 values in u/m lower marginal bl.4. (Yv. 1108/1113-104E).	**	24 €
3243	1957 Foreign celebrities, complete set of 7 values in u/m bl.4. 8c lower marginal, the rest lower left corners. (Yv. 1132/1138-44E).	**	10 €
3244	1930 Airmail issue, complete set of 2 values, u/m. (Yv. 5/6-94E).	**	22 €
3245	2f25 1934 Bleriot airmail stamp, u/m. (Yv. 7-47E).	**	10 €
3246	1936 Airmail issue, complete set of 6 values, u/m. 3.50f with a light yellow toning. (Yv A8/A13).	**	40 €
3247	50f 1936 Airplane over Paris airmail stamp (green), m (very light). (Yv A14).	*	250 €
3248	50f 1936 Airplane over Paris airmail stamp in u/m corner copy. (Yv A15).	**	400 €
3249	500f 1947 Airmail stamp, u/m. (Yv 20-60E).	**	15 €
3250	1949 Airmail issue, complete set of 4 values, u/m. (Yv 24/27-110E).	**	25 €
3251	1000f 1950 Airmail stamp, u/m. (Yv 29-165E).	**	35 €
3252	200f 1949 Airmail issue in corner copy dated 23.5.49, u/m. (Yv 25-80E).	*	20 €
3253	300f 1949 Airmail issue in corner copy dated 23.5.49, u/m. (Yv 26-100E).	**	25 €
3254	1954 and 1957-59 Prototypes (airmails), 2 complete sets of 4+3 values, m. (Yv. 30/33+35/37-273E).	*	60 €
3255	1957-59 Prototypes (airmails), complete set of 3 values in u/m bl.4. (Yv. 35/37-440E).	**	100 €
3256	1957-59 Prototypes (airmails), complete set of 3 values, u/m. (Yv. 35/37-110E).	**	22 €
3257	1000f 1957-59 Prototypes (Alouette) in u/m corner bl.4 dated 31.12.57. (Yv 37-385E).	**	90 €



3258



3260



3261



3259



3264



3265



3266



3267

- |      |  |    |       |
|------|--|----|-------|
| 3258 | 1960-64 Prototypes (new values), complete set of 4 values in u/m bl.4. (Yv. 38/41-80E).                                  | ** | 18 €  |
| 3259 | 1960-64 Prototypes (new values), complete set of 4 values in u/m corner bl.4 with corners dated 59-60. (Yv. 38/41-120E). | ** | 30 €  |
| 3260 | 1906-07 "F.M." ovpt, 10c rose, m. (Yv. 4-45E).   | *  | 10 €  |
| 3261 | 2x15c 1863-70 Postage dues (type I+II), u. (Yv. 3+3B-40E).   | o  | 8 €   |
| 3262 | 30c 1871-78 Postage due, u. VF. (Yv. 6-160E).  | o  | 40 €  |
| 3263 | 40c 1871-78 Postage due, u. (Yv. 7-700E).  | o  | 150 € |
| 3264 | 50f 1946-55 Postage due in u/m four corner dated bl.4. (50, 51, 52, 54). Superb. (Yv. 88-560E).                          | ** | 130 € |



3265	50c 1946-55 Postage due in u/m corner dated bl.4. (14.3.47). (Yv. 80-150E).	**	35 €
3266	100f 1946-55 Postage due in u/m corner dated bl.4. (27.1.53). (Yv. 89-425E).	**	100 €
3267	5c+10c+20c+50c 1960 Postage dues in u/m corner dated bl.4. 50c dated 60, the rest 59. (Yv. 90/93-170E).	**	40 €
3268	1960 Postage dues, complete set of 5 values, u/m. (Yv. 90/94-70E).	**	15 €
3269	1960 Postage dues, complete set of 5 values in u/m bl.4. (Yv. 90/94-280E).	**	60 €
3270	15c green-olive 1901-04 "Mouchon" ovpt "F.M." (=Franchise Militaire), u/m. (Yv. 3-210E).	**	35 €
3271	Preobliteres: 1953-60 types Moissonneuse and Coq Gaulois, sets of 13+4 values, u/m. (Yv. 106/122-167E).	**	30 €
3272	France Libre: 1.50F+98.50F 1943 Pour laide aux resistans in u/m pair. (Yv. 6-110E).	**	20 €
3273	Legion des Volontaires Francais: 1942 stamps ovpt "FRONT DE LEST-OSTFRONT", F and F+10F, u/m. (Yv. 4+5-45E).	**	9 €
<b>GERMANY (REICH-WEST-EAST-BERLIN)</b>			
3274	D.Reich: 30gr blue 1872 issue in vertical pair, m. (Mi. 13-280E).	*	65 €
3275	D.Reich: 2M 1890/99 issue, m. (Mi. 37-325E).	**	60 €
3276	D.Reich: 3M 1902 issue, inscription "DEUTSCHES REICH", perf. 14. 25x16 perf. holes, u/m. (Mi.80B-100E as a hinged stamp).	**	35 €
3277	D.Reich: 1M/10pf 1912 Rheim-Main airmail stamp, u/m. (Mi. IV-2450E).	**	500 €
3278	D.Reich: 2.50M/2M 1920 Surcharges, the high value of the set, u. (Mi.118-250E).	o	45 €
3279	D.Reich: 80pf+150pf 1922 Arbeiter in pairs on fragment. (Mi.186+189-150E).	o	18 €
3280	D.Reich: 160pf 1922 Arbeiter on fragment, u. (Mi.190-220E).	o	25 €



3281



3282



3283



3285



3284



3286



3287



3289



3288



3290



3291



3292



3293



3294



3295



3296



3299



3297



3298



3300

3281	D.Reich: 1923 Rhein-Ruhr aid, complete set of 3 values, u. (Mi.258/260-150E).	o	30 €
3282	D.Reich: 1923 Millions surcharge, complete set of 6 values, u. (Mi.332/337-220E).	o	40 €
3283	D.Reich: 1923/24 New currency issue, complete set of 6 values, u/m. (Mi. 338/343-110E).	**	22 €
3284	D.Reich: 1924 Airmail issue, complete set of 7 values, m. (Mi. 344x/350x-260E).	*	50 €
3285	Soviet Zone: 1946 Leipziger Messe m/s, u/m. (Mi. Bl.5Y-100E).	**	20 €
3286	D.Reich: 1924 Air mail issue, complete set of 7 values, u/m. (Mi. 355x/361-350E).	**	70 €
3287	D.Reich: 1924 UPU 50th anniv., 2 complete sets of 2+2 values, u/m. (Mi. 362/363+368/369-100E).	**	20 €
3288	D.Reich: 1925 German automobil exhibition, complete set of 2 values, u/m. (Mi. 370/371-60E).	**	12 €
3289	D.Reich: 1925 1000 Years Rheinland, complete set of 3 values, u/m. (Mi. 372/374-45E).	**	9 €
3290	D.Reich: 1926 Airmail issue, complete set of 8 values, m. (Mi. 378/384-140E).	*	28 €
3291	D.Reich: 1926 Famous Germans, complete set of 13 values, m. (Mi. 385/397-100E).	*	20 €
3292	D.Reich: 20pf 1926 Famous Germans, imperforate, u/m. Certificate Schlegel (2012). (Mi. 392U-2600E).	**	500 €
3293	D.Reich: 1926 Provinces coat of arms, complete set of 4 values, u/m. (Mi. 398/401-220E).	**	40 €
3294	D.Reich: 1927 Hindenburg, complete set of 4 values, u/m. (Mi. 403/406-100E).	**	20 €
3295	D.Reich: 1927 "I.A.A. 10-15.10.1927" ovpt, complete set of 3 values, u/m. (Mi. 407/409-240E).	**	45 €





3301



3304



3302



3303



3307



3305



3306

- 3296 D.Reich: 1928, 1930, 1931 and 1932 German Presidents, 4 complete sets of 13+3+1+2 values, m. (Mi. 410/422+435/437+454+465/466-145E). \* 28 €
- 3297 D.Reich: 1928 Zeppelin, complete set of 2 values plus 1931 1M Zeppelin stamp, m. (Mi. 423/424+455-120E). \* 24 €
- 3298 D.Reich: 1928 Zeppelin, complete set of 2 values, m. (Mi. 423/424-90E). \* 18 €
- 3299 D.Reich: 1928 Coat of arms, complete set of 5 values, m. (Mi. 425/429-70E). \* 14 €
- 3300 D.Reich: 1929 Coat of arms, complete set of 5 values, m. (Mi. 430/434-75E). \* 15 €
- 3301 D.Reich: 1930 Zeppelin (South America flight), complete set of 2 values in vertical pairs, u. (Mi. 438/439-1600E). o 250 €
- 3302 D.Reich: 1931 Zeppelin (Polar flight), complete set of 3 values in u/m lower left corner copies with plate nos 1. (Mi. 456/458-4000E). \*\* 800 €
- 3303 D.Reich: 1931 Zeppelin (Polar flight), complete set of 3 values, u. (Mi. 456/498-1300E). o 260 €
- 3304 D.Reich: 1932 Hindenburg, complete set of 7 values, m. (Mi. 467/473-45E). \* 9 €
- 3305 D.Reich: 1933 New Germany Parliament in Potsdam, complete set of 3 values, m. (Mi. 479/481-55E). \* 10 €
- 3306 D.Reich: 1933 Hindenburg, complete set of 14 values, m. (Mi. 482/495-200E). \* 40 €
- 3307 D.Reich: 1933 Zeppelin (Chicago flight), complete set of 3 values, u. (Mi. 496/498-1000E). o 200 €



3308



3309



3311



3312



3313



3310



3314



3315



3316



3317



3318



3319



3320



3321

3308	D.Reich: 1934 Airmail issue, complete set of 11 values, m. (Mi. 529/534-100E).	*	20 €
3309	D.Reich: 1934 Saar plebiscite, complete set of 2 values, u/m. (Mi. 544/545-90E).	**	17 €
3310	D.Reich: 1934 Nuremberg Party Rally, complete set of 2 values, u/m. (Mi. 546/547-85E).	**	17 €
3311	D.Reich: 1935 Schutz-Bach-Handel Festival, complete set of 3 values in u/m bl.4. (Mi. 573/575-128E).	**	24 €
3312	D.Reich: 25pf 1935 Schutz-Bach-Handel Festival in vertical strip of 3, "1585" instead of "1685" (middle stamp), u/m. (Mi. 575+575I-100E).	**	18 €
3313	D.Reich: 1935 Nuremberg Party Rally, complete set of 2 values in u/m marginal bl.4. (Mi. 586/587-80E).	**	16 €
3314	D.Reich: 1935 German costumes, complete set of 10 values, u/m. (Mi. 588/597-180E).	**	36 €
3315	D.Reich: 1936 Winter Olympics, complete set of 3 values, u/m. (Mi. 600/602-60E).	**	12 €
3316	D.Reich: 40pf 1936 10 Years Lufthansa, u/m. (Mi. 603-55E).	**	10 €
3317	D.Reich: 1936 Winter Relief Organization, complete set of 9 values, u/m. (Mi. 634/642-80E).	**	16 €
3318	D.Reich: 1937 Ships, complete set of 9 values in u/m bl.4. (Mi. 651/659-400E).	**	75 €
3319	D.Reich: 1937 Ships, complete set of 9 values, u/m. (Mi. 651/659-100E).	**	19 €
3320	D.Reich: 42+108pf 1938 5th Race for the brown ribbon, u/m. (Mi. 671-150E).	**	27 €
3321	D.Reich: 1939 International Automobile Exhibition, complete set of 3 values, u/m. (Mi. 686/688-110E).	**	22 €
3322	D.Reich: 1941 Fellowship block of the D.Reich P.O., complete set of 6 values, u/m. (Mi. 773/778-60E).	**	12 €
3323	D.Reich: 25+100pf German Grand Prize in u/m corner bl.4. (Mi. 779-68E).	**	13 €



3322



3326



3324



3325



3323



3328



3327

- 3324 D.Reich: 42+108pf 1941 8th race for the brown ribbon in u/m bl.4. (Mi. 780-48E). \*\* 9 €
- 3325 D.Reich: 25+50pf 1941 Grand Prize of the German Capital in u/m corner bl.4. (Mi. 803-56E). \*\* 11 €
- 3326 D.Reich: 1941 Landscapes, complete set of 4 values, u/m. (Mi. 806/809-20E). \*\* 4 €
- 3327 D.Reich: 1945 SS ans SA, complete set of 2 values in imperforate pairs, u/m. Both copies lower marginal with plaque No.6. (Mi. 909/910-90E). \*\* 18 €
- 3328 D.Reich: 1930 IPOSTA m/s, u/m. (Mi. Bl.1-1600E). \*\* 320 €



3329



3330



3331

3329	1933 German charity 10th anniversary m/s, u/m. (Mi. Bl.2-6000E).	**	1000 €
3330	D.Reich: 1935 OSTROPA m/s with Exhibition special First Day canc. (Mi. Bl.3-1100E).	o	200 €
3331	D.Reich: 1936 Munchen-Riem race m/s, u/m. (Mi. Bl.4-32E).	**	6 €
3332	D.Reich: 1936 Berlin Olympic Games set of 2 m/s, m. (Mi. Bl.5/6-100E).	*	18 €
3333	D.Reich: 1937 48th Hitlers birthday m/s, u/m. (Mi. Bl.7-70E).	**	13 €
3334	D.Reich: 1937 1st National Stamp Exhibition m/s, u/m. (Mi. Bl.8-210E).	**	40 €
3335	D.Reich: 1937 Nurnberg Reichsparteitag m/s, u/m. (Mi. Bl.11-320E).	**	55 €
3336	D.Reich: 1910/20 2x5pf+4x"X" labels in bl.6 from booklet, m. (Mi. H-BI.7-1500E).	*	220 €
3337	D.Reich: 1910/20 15pf Germania in bl.6 from booklet, m. (Mi. H-BI.15-36E).	*	5 €
3338	D.Reich: 1910/20 2x10pf+4x5pf Germania in bl.6 from booklet, m. (Mi. H-BI.23-60E).	*	9 €
3339	D.Reich: 1921 Germania and "Numbers", 6x60pf Germania, 4x60+2x40pf Germania, 2x40pf Germania+4x30pf "Numbers" and 30+5x10pf "Numbers", 4 bl.6 from booklet, m. (Mi. H-BI.33/36-57E).	*	9 €



3332



3333



3334



3335



3336



3337



3338



3339



3340



3343



3342



3344



3346

- 3340 D.Reich: 10x5pf 1925 Rheinland 1000 years German in booklet pane of 10, m. (Mi. H-BI39-750E). \* 120 €
- 3341 2x4pf 1928/30 German President issue in vertical strip of 3 with "X" label between (stamps from booklet), m. \* 20 €
- (Mi. S41-120E).



3341



3345



3347



3348



3349

- 3342 D.Reich: 2x20pf 1925 State coat of arms plus 2 "X" labels in bl.4 (from booklet), u/m. (Mi. H-BI43-800E). \*\* 125 €
- 3343 8x15pf+"2xX" labels 1927 Kant in booklet pane, m. (Mi. HB53-1450E). \* 240 €
- 3344 D.Reich: 8x5pf 1926 State coat of arms in booklet pane of 8, m. (Mi. H-BI54-270E). \* 40 €
- 3345 D.Reich: 6x10pf 1926 State coat of arms plus 2 "X" labels in booklet pane of 8, u/m. (Mi. H-BI55-600E). \*\* 100 €
- 3346 D.Reich: 6x5pf 1928 State coat of arms plus 2 slogan labels in booklet pane of 8, u/m. (Mi. H-BI66-200E). \*\* 32 €
- 3347 D.Reich: 4x8pf 3x15pf 1928 State coat of arms plus 1 "X" label in booklet pane of 8, m. (Mi. H-BI67-150E). \* 24 €
- 3348 6x6pf and 5x12pf+slogan label 1933 Fridericus stamps in booklet panes, u/m. (Mi. HB74/75-140E). \*\* 23 €
- 3349 German PO in China: 1898 "China" ovpt on D.Reich stamps, complete set of 6 values, u. (Mi. III/6II-90E). o 20 €



3350	German PO in Marocco: 1906/11 surcharges, complete set of 12 values, u. (Mi. 34/45-1400E).	o	350 €
3351	German PO in Turkey: 1889/1900 Surcharges on D.Reich stamps, complete set of 5 values. (Mi. 6/10-95E).	**/*	22 €
3352	German PO in Turkey: 1900 surcharges on D.Reich stamps (with dach), complete set of 6 values, m. (Mi. 12II/23II-650E).	*	150 €
3353	German PO in Turkey: 1905 surcharges on D.Reich stamps (without WMK), complete set of 12 values, m. (Mi. 24/35-600E).	*	150 €
3354	German PO in Turkey: 1905/13 surcharges on D.Reich stamps (with WMK), complete set of 12 values, u. (Mi. 36/47-900E).	o	220 €
3355	German PO in Turkey: 1908 surcharges (centimes), complete set of 5 values, m. (Mi. 48/52-120E).	*	30 €
3356	German Colonies/Southwest Africa: 1897 "Deutsch Sudwest-Afrika" ovpt, complete set of 4+2 values, m. (Mi. 1/4+I/II-610E).	*	150 €
3357	German Colonies/Southwest Africa: 25pf+50pf 1897 "Deutsch Sudwest-Afrika" ovpt, m. (Mi. I/II-560E).	*	130 €
3358	German Colonies/Karolinen: 50pf 1899 "Karolinen" ovpt (480) on fragment. (Mi. 6I-800E).	o	150 €
3359	German Colonies/Karolinen: 1900 issue, complete set of 13 values, m. (Mi. 7/19-200E).	*	45 €
3360	German Colonies/Kiautschou: 1901 issue, complete set of 13 values, m. (Mi. 5/17-600E).	*	150 €
3361	German Colonies/Kiautschou: 5 1/2M 1905 issue, the high value of the set, m (just light trace). (Mi. 27A-1800E).	*	250 €
3362	German Colonies/Togo: 1900 issue, complete set of 13 values, m. (Mi. 7/19-220E).	*	50 €
3363	German Colonies, Togo: 1909/19 issue (WMK), complete set of 4 values, /m. (Mi.2023-30E).	*	7 €





3367



3369



3370



3372



3371



3373



3374



3375



3376



3378



3380



3377



3379

3364	Memel: 05.1923 Surcharges set to 5c/100mk plus 15c/25mk, set of 7 values. 15c/25mk high value stamp hinged. (Mi. 183/188+190).	**/*	50 €
3365	Memel: 11.1923 Surcharges, complete set of 4 values, m (trace). (Mi. 230/233-150E).	*	32 €
3366	Saar: 1920 "Sarre" ovpt on D.Reich stamps, complete set of 17 values, m. (Mi. 1/17-300E).	*	60 €
3367	Saar: 1920 "SARRE" ovpt on Bayern stamps, complete set of 14 values, m. (Mi. 18/31-1400E).	*	280 €
3368	Saar: 1920 "SAARGEBIET" ovpt on D.Reich stamps, complete set of 12 values, u. (Mi. 32/43-25E).	o	5 €
3369	Saar: 1920 "SAARGEBIET" ovpt on D.Reich stamps, complete set of 6 values, u. (Mi. 44/49-30E).	o	6 €
3370	Saar: 1921 "SAARGEBIET" ovpt on D.Reich stamps, complete set of 3 values, u. (Mi. 50/52-45E).	o	9 €
3371	Saar: 1921 Landscapes I, complete set of 17 values, u. (Mi. 53A/69-220E).	o	45 €
3372	Saar: 2x20pf 1921 Landscapes I, perf. 10 1/2 in vertical tete-beche pair, u. (Mi. 55B-560E).	o	100 €
3373	Saar: 1921 Surcharges, complete set of 14 values, u/m. (Mi. 70/83-240E).	**	47 €
3374	Saar: 1923 Landscapes IV, complete set of 4 values, u/m. (Mi. 98/101-120E).	**	24 €
3375	Saar: 1925 Madonna von Blieskastel, complete set of 2 values, u/m. (Mi. 102/103-45E).	**	9 €
3376	Saar: 1926 Volkshilfe, complete set of 4 values, u/m. (Mi. 104/107-130E).	**	25 €
3377	Saar: 1927 Landscapes V, 60c 1930 Landscapes VII and 90c 1932 Landscapes VIII, complete sets of 14+1+1 values, u/m. (Mi. 108/121+143+160-172E).	**	35 €
3378	Saar: 1927 Volkshilfe "1927-28" ovpt, complete set of 4 values, u/m. (Mi. 122/125-160E).	**	32 €
3379	Saar: 1928+1932 Airmail issues, 2 complete sets of 2+2 values, u/m. (Mi. 126/127+158/159-73E).	**	15 €
3380	Saar: 1928 Volkshilfe, complete set of 7 values, u. (Mi. 128/134-1100E).	o	220 €



3381



3384



3387



3382



3385



3386



3388



3389



3390



3383



3392



3393



3391

3381	Saar: 1929 Volkshilfe, complete set of 7 values, u/m. (Mi. 135/141-200E).	**	40 €
3382	Saar: 1931 Volkshilfe, complete set of 7 values, u. (Mi. 144/150-650E).	o	130 €
3383	Saar: 1931 Volkshilfe, complete set of 7 values, u. (Mi. 151/157-800E).	o	160 €
3384	Saar: 90c 1932 Landscapes VIII in u/m corner bl.4. (Mi. 160-160E).	**	32 €
3385	Saar: 1932 Volkshilfe, complete set of 7 values, u/m. (Mi. 161/167-700E).	**	140 €
3386	Saar: 1933 Neunkirchen, complete set of 3 values, u/m. (Mi. 168/170-270E).	**	55 €
3387	Saar: 1934 Volkshilfe, complete set of 7 values, u. (Mi. 171/177-300E).	o	60 €
3388	Saar: 1935 "VOLKSABSTIMMUNG 1935" ovpt, complete set of 16 values, u. (Mi. 179/194-150E).	o	30 €
3389	Saar: 1947 Saar I, complete set of 20 values, u. (Mi. 206Z/225Z-120E).	o	24 €
3390	Saar: 1947 Surcharges, complete set of 13 values, u. (Mi. 226Z/238Z-130E).	o	25 €
3391	Saar: 1948 Saar III, complete set of 13 values, u/m. (Mi. 239/251-45E).	**	9 €
3392	Saar: 1948 Airmail issue, complete set of 3 values, u. (Mi. 252/254-50E).	o	10 €
3393	Saar: 1948 Flood victims aid, complete set of 5 values, u. (Mi. 255/259-500E).	o	100 €
3394	Saar: 1949 Jugendherbergswerk, complete set of 2 values, u. (Mi. 262/263-260E).	o	50 €
3395	Saar: 1949 horse day, complete set of 2 values, u. (Mi. 265/366-85E).	o	17 €
3396	Saar: 1949 Volkshilfe, complete set of 5 values, u. (Mi. 267/271-650E).	o	130 €
3397	Saar: 1950 Holy year, complete set of 3 values, u. (Mi. 293/295-50E).	o	10 €
3398	Saar: 1950 European council, complete set of 2 values, u. (Mi. 297/298-320E).	o	65 €
3399	Saar: 1950 Volkshilfe, complete set of 5 values, u/m. (Mi. 299/303-75E).	**	15 €



3394



3396



3395



3397



3398



3400



3401



3405



3399



3402



3403



3404

- |      |   |     |      |
|------|---|-----|------|
| 3400 | Saar: 1950 Volkshilfe, complete set of 5 values, u. (Mi. 299/303-380E).   | o   | 75 € |
| 3401 | Saar: 15F 1951 Stamp day, u (1st day canc.). (Mi. 305-24E).   | o   | 4 €  |
| 3402 | Saar: 1952 Volkshilfe, complete set of 3 values, u. (Mi. 338/340-50E).  | o   | 10 € |
| 3403 | Saar/Bundes: 1957 Heuss, complete set of 20 values, u/m. (Mi. 380/399-75E).   | **  | 15 € |
| 3404 | Saar/Bundes: 1957 Heuss, complete set of 20 values, u/m. (Mi. 409/428-120E).  | **  | 24 € |
| 3405 | Saar/Bundes: 20f+35f+70f+80f+90f+100f+200f+300f 1957 Heuss, on 2 covers canc. "SAARBRÜCKEN 2*20.12.57" (1st day of issue). (Mi. 417+420+423/428). | FDC | 55 € |



3406



3408



3407



3409



3410



3413



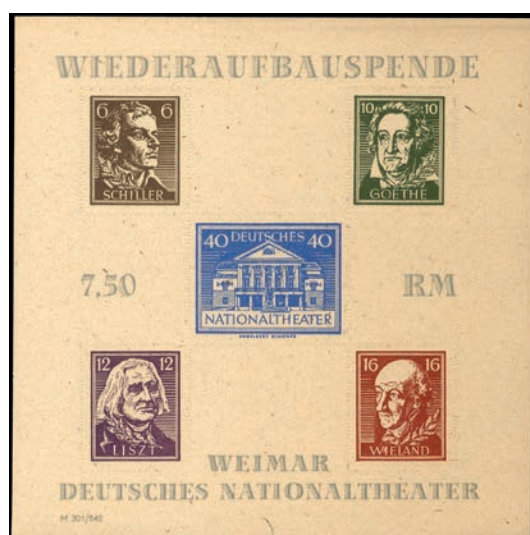
3411



3412



3414



3418



3417



3416



3415

3406	Saar/Bundes: 1957 Heuss, complete set of 20 values on 3 covers canc. "2.11.57", "05.12.57" and "20.12.57" (1st days of issue). (Mi. 380/399-425E).	FDC	85 €
3407	Saar: 1929/34 Official stamps, complete set of 11 values, u/m. (Mi. 22/32-130E).	**	26 €
3408	Saar: 1949 Official stamps, complete set of 12 values, u/m. (Mi. 33/44-150E).	**	30 €
3409	Saar: 1948 Flood victims aid regular and airmail m/s, u/m. (Mi. Bl.1/2-1600E).	**	320 €
3410	Local issues/Meissen: 1946 Wiederaufbau m/s, u/m. (Mi. Bl.1-260E).	**	50 €
3411	Local issues/Strausberg: 30.1.1946 issue m/s in violet color, u/m. (Mi. Bl.1-55E).	**	10 €
3412	Local issues/Finsterwalde: 16.2.1946 issue m/s (large coat of arms), u/m. (Mi. Bl.1-80E).	**	16 €
3413	Allied Occupation: 1948 Export Messe Hannover, se-tenant bl.4, u. (Mi. VZd1-80E).	o	15 €
3414	Allied occupation: 2x1946 issue (figures) m/s, perforate and imperforate, u/m. (Mi. Bl.12A+12B-120E).	**	24 €
3415	Soviet Zone: 1945 Victims of fascism, complete set of 3 values, u/m. (Mi. 20/22-120E).	**	24 €
3416	Soviet Zone: 1945 Children aim, complete set of 3 values in u/m imperforate pairs. (Mi. 26/28-30E).	**	6 €
3417	Soviet Zone: 1945 Christmas m/s (small), u/m. (Mi. Bl.1t-1600E).	**	320 €
3418	Soviet Zone: 2x1946 Weimar m/s, one imperforate. Imperforate m/s mng, the other u/m. (Mi. Bl.3A+3B-100E).	**/*	20 €



3419



3420



3427



3422



3424



3429

- |      |   |    |       |
|------|---|----|-------|
| 3419 | Soviet Zone/Thuringen: 1945 Christmas (large) m/s, u/m. (Mi. Bl.2).                 | ** | 450 € |
| 3420 | Soviet Zone: 1946 Leipziger Messe m/s, u. (Mi. Bl.5X-350E).                         | o  | 70 €  |
| 3421 | Soviet Zone: 1948 Personalities, complete set of 16 values, u/m. (Mi. 212/227-65E). | ** | 13 €  |



3423



3425



3421



3431



3426



3428



3430

- 3422 Soviet Zone: 1949 Goethe m/s, u/m. (Mi. Bl.6-220E). \*\* 45 €
- 3423 DDR: 1951 German-Chinese friendship, complete set of 3 values, m. (Mi. 286/288-100E). \* 20 €
- 3424 DDR: 1951 International youth and student games, complete set of 4 values in u/m bl.4. (Mi. 289/292-220E). \*\* 40 €
- 3425 DDR: 24pfg 1951 1st 5 Years plan in u/m bl.4. (Mi. 293-20E). \*\* 4 €
- 3426 DDR: 24pfg 1951 K.Liebknecht in u/m bl.4. (Mi. 294-24E). \*\* 5 €
- 3427 DDR: 12pfg 1951 Stamp day in u/m bl.4. (Mi. 295-30E). \*\* 6 €
- 3428 DDR: 1951 German-Soviet friendship, complete set of 2 values in u/m bl.4. (Mi. 296/297-52E). \*\* 10 €
- 3429 DDR: 1952 Winter games, complete set of 2 values in u/m bl.4. (Mi. 298/299-60E). \*\* 12 €
- 3430 DDR: 1952 Beethoven and German composers, 2 complete sets of 2+3 values in u/m bl.4. (Mi. 300/301+308/310-72E). \*\* 14 €
- 3431 DDR: 1952 National reconstruction programm, complete set of 4 values in u/m bl.4. (Mi. 303/306-48E). \*\* 9 €



3432



3434



3433



3435



3436



3439

- |      |  |    |      |
|------|--|----|------|
| 3432 | DDR: 1952 Art personalities, complete set of 4 values in u/m bl.4. (Mi. 311/314-72E).                                    | ** | 14 € |
| 3433 | DDR: 1952 Wien peace conference, complete set of 2 values in u/m bl.4. (Mi. 320/321-20E).                                | ** | 4 €  |
| 3434 | DDR: 1953 W.Pieck, complete set of 2 values in u/m bl.4. (Mi. 342/343-100E).   | ** | 20 € |
| 3435 | DDR: 1954 5 Years plan (III)- Provisionals, complete set of 8 values in u/m upper right corner bl.4. (Mi. 435/442-120E). | ** | 24 € |
| 3436 | DDR: 1950 DEBRIA m/s, u/m. (Mi. Bl.7-150E).  | ** | 30 € |

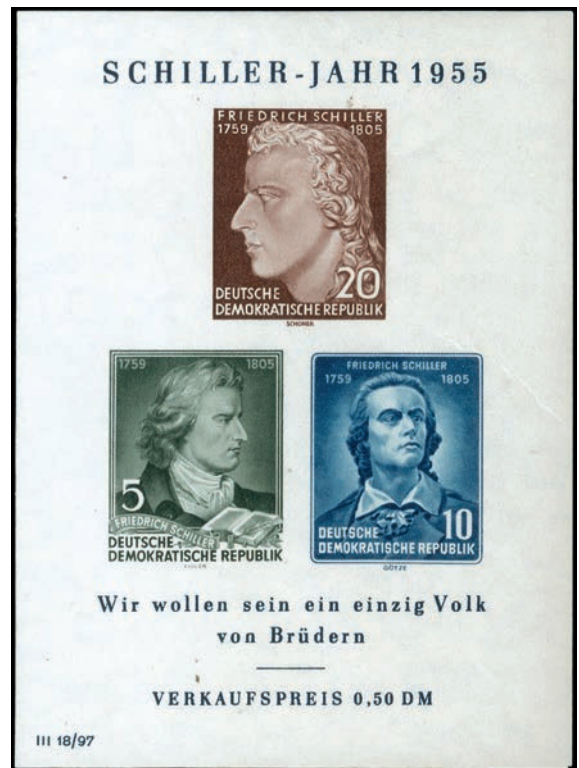




3437



3438



3440



3441



3443



3442

- |      |   |    |       |
|------|---|----|-------|
| 3437 | DDR: 1953 K.Marx 2 m/s (imperforate), u. (Mi. Bl.8B/9B-300E).                         | o  | 60 €  |
| 3438 | DDR: 1955 Engels m/s, u. (Mi. Bl.13-180E).  | o  | 36 €  |
| 3439 | DDR: 1954 Stamp day m/s, u/m. (Mi. Bl.10-50E).  | ** | 10 €  |
| 3440 | DDR: 1955 Schiller m/s, u/m. (Mi. Bl.12-24E).   | ** | 5 €   |
| 3441 | DDR: 10pfg 1956 Official stamp, u/m. (Mi. 30y-70E).                                   | ** | 10 €  |
| 3442 | 1948 "BERLIN" overprint issue in complete set of 20 values, u/m. (Michel 1/20). VF.   | ** | 80 €  |
| 3443 | Berlin: 1949 "BERLIN" ovpt in red, complete set of 14 values, u/m. (Mi. 21/34-1400E). | ** | 280 € |



3444



3445



3447



3446



3448



3450

- |      |  |    |       |
|------|--|----|-------|
| 3444 | Berlin: 1949 Berliner Wahrungsgeschadigten m/s, u. Certificate Schlegel (1980). (Mi. Bl.1-2200E).                                      | o  | 440 € |
| 3445 | Berlin: 17.JUNI.1953 issue, complete set of 2 values in used bl.4. (Mi. 110/111-152E).   | o  | 27 €  |
| 3446 | Berlin: 20+10pf 1954 National postal exhibition in used bl.4. (Mi. 120-136E).  | o  | 22 €  |
| 3447 | Berlin: 1949 Berlin buildings, 5x20pf+label, 5x10pf+label, 5x4pf+label and 5x1pf+label in bl.6 from booklet, u/m. (Mi. H-Bl.1/4-400E). | ** | 60 €  |



3449



3451



3452



3453



3454



3455



3456



3457



3458

3448	Berlin: 1952 Berlin buildings, Dei Deutsche...label+3x1pf, u/m. (Mi. W39-90E).	**	13 €
3449	Berlin: 1952 Berlin buildings, 1pf+Der Fernsprech...label+1pf, u/m. (Mi. W36-320E).	**	48 €
3450	Berlin: 1952 Berlin buildings, Aktuelle...label+4pf in bl.4, u/m. (Mi. W27-75E).	**	10 €
3451	Berlin: 1952 Berlin buildings, Telegram...label+4pf+Aktuelle...label, m. (Mi. W30-90E).	*	13 €
3452	Berlin: 1952 Berlin buildings, 4pf+Telegramm...label+4pf, u. (Mi. W32-360E).	o	50 €
3453	Berlin: 1952 Berlin buildings, 4pf+Aktuelle...label+4pf, u. (Mi. W28-130E).	o	20 €
3454	Berlin: 1952 Berlin buildings, 5x4pf+label (Telegramm-Aufgabe...) in bl.6 from booklet, m. (Mi. H-BL.8-50E).	*	7 €
3455	Berlin: 1952 Berlin buildings, 2xDie Berliner...labels+4x10pf in bl.6, u. (Mi. W22-400E).	o	60 €
3456	Berlin: 1949 Berlin buildings, 100 Jahre...label+10pf+100 Jahre...label, u/m. (Mi. W10-580E).	**	85 €
3457	Berlin: 1949 Berlin buildings, 5x10pf+label (100 Jahre...) in bl.6 from booklet, u/m. (Mi. H-BL.2-180E).	**	27 €
3458	Berlin: 1949 Berlin buildings, 10pf+100 Jahre...label+10pf, u/m. (Mi. W12-580E).	**	85 €



3459



3460



3461



3462



3463



3464



3470



3471



3465



3466



3467



3468



3469

3459 Berlin: 1949 Berlin buildings, 3x10pf+100 Jahre...label in bl.4 from booklet, m. (Mi. W11-250E).

\* 37 €

3460 Berlin: 1952 Berlin buildings, 10pf+Die Berliner...label+10pf, m. (Mi. W24-90E).

\* 13 €



3472



3478



Blockpreis DM 3.—



3473



3474



3477



3475



3476



Blockpreis DM 3.—

3479

- 3461 Berlin: 1952 Berlin buildings, Die Berliner...label+10pf+Die Berliner...label, m. (Mi. W22-90E). \* 13 €
- 3462 Berlin: 1952 Berlin buildings, 10pf+blank label+Der Fernsprech...label+1pf, u. (Mi. SZ6-200E). o 30 €
- 3463 Berlin: 1949 Berlin buildings, 10pf+blank label+100 Jahre...label+20pf, m. (Mi. SKZ1B-250E). \* 37 €
- 3464 Berlin: 1949 Berlin buildings, 20pf+blank label+100 Jahre...label+10pf, u/m. (Mi. SKZ2B-400E). \*\* 60 €
- 3465 Berlin: 1952 Berlin buildings, 20pf+Die Briefmarken...label+20pf, m. (Mi. W20-90E). \* 13 €
- 3466 Berlin: 1949 Berlin buildings, 20pf+100 Jahre...label+20pf, u. (Mi. W16-700E). o 100 €
- 3467 Berlin: 1949 Berlin buildings, 20pf+100 Jahre...label, m. (Mi. W15-250E). \* 37 €
- 3468 Berlin: 1952 Berlin buildings, Die Briefmarken...label+20pf, m. (Mi. W19-60E). \* 13 €
- 3469 Berlin: 1952 Berlin buildings, 2xDie Briefmarken...labels+4x20pf in bl.6, u. (Mi. W18-360E). o 50 €
- 3470 Berlin: 1949 Berlin buildings, 20pf+blank label+100 Jahre...label+4pf, u/m. (Mi. SZ4A-300E). \*\* 45 €
- 3471 Berlin: 1952 Berlin buildings, 20pf+blank label+Telegramm...label+4pf, u. (Mi. SZ5-200E). o 30 €
- 3472 Berlin: 8.5.1952 (2DM) Berlin buildings booklet, u/m. (Mi. MH.2-1300E). \*\* 220 €
- 3473 French Zone/Baden: 1948 New values issue and 1948/49 without pf issue, 2 complete sets of 14+10 values, u/m. (Mi. 14/24+27/37-245E). \*\* 50 €
- 3474 French Zone/Baden: Without Pfg issue, complete set of 10 values, u. (Mi. 28/37-220E). o 45 €
- 3475 French Zone/Baden: Freiburg issue, complete set of 4 values, stamps from the m/s, u/m. (Mi. 38A/41A-70E). \*\* 14 €
- 3476 French Zone/Baden: 30 (Pfg) 1949 Engineer congress, u. (Mi. 461-85E). o 17 €
- 3477 French Zone/Baden: 1949 Goethe, complete set of 3 values, u/m. (Mi. 47/49-40E). \*\* 8 €
- 3478 French Zone/Baden: C.Shurz, complete set of 3 values, u. (Mi. 50/52-110E). o 22 €
- 3479 French Zone/Baden: 2x1949 Freiburg issue m/s, one imperforate, u/m. (Mi. Bl.1A+1B-150E). \*\* 30 €



3480



3481



3487



3482



3483



3484



3486



3489



3485



3490



3493



3495



3496



3488



3494



3497



3498



3500



3491



3499



3492

3480	French Zone/Rheinland - Pfalz: 1948 New values issue (DM), complete set of 14 values, u/m. (Mi. 16/29-40E).	**	8 €
3481	French Zone/Rheinland - Pfalz: 1948 Hilfswerk Ludwighafen, complete set of 2 values, u. (Mi. 30/31-150E).	o	30 €
3482	French Zone/Rheinland - Pfalz: 1948/49 Without Pfg issue, complete set of 10 values, u/m. (Mi. 32/41-150E).	**	30 €



3501



3503



3504



3502

- 3483 French Zone/Rheinland - Pfalz: 1949 Red Cross, complete set of 4 values, u. (Mi. 42/45-440E). o 85 €
- 3484 French Zone/Rheinland - Pfalz: 1949 Goethe, complete set of 3 values, u/m. (Mi. 46/48-30E). \*\* 6 €
- 3485 French Zone/Rheinland - Pfalz: 1949 German stamp centenary, complete set of 2 values, u/m. (Mi. 49/50-50E). o 10 €
- 3486 French Zone/Rheinland - Pfalz: 1949 UPU 75th anniversary, complete set of 2 values, u. (Mi. 51/52-28E). o 5 €
- 3487 French Zone/Wurttembrg: 1948/49 Without Pfg issue, complete set of 10 values, u/m. (Mi. 28/37-200E). \*\* 40 €
- 3488 French Zone/Wurttembrg: German ski team, complete set of 2 values, u. (Mi. 38/39-60E). o 12 €
- 3489 French Zone/Wurttembrg: Red Cross, complete set of 4 values, u. (Mi. 40/43-480E). o 90 €
- 3490 French Zone/Wurttembrg: Goethe, complete set of 3 values, u. (Mi. 44/46-110E). o 22 €
- 3491 French Zone/Wurttembrg: G.V. Stiftung, complete set of 2 values, u. (Mi. 47/48-34E). o 7 €
- 3492 French Zone/Wurttembrg: German stamp centenary, complete set of 2 values, u. (Mi. 49/50-32E). o 6 €
- 3493 French Zone/Wurttembrg: 1949 UPU 75th anniv., complete set of 2 values, u. (Mi. 51/52-25E). o 5 €
- 3494 American and British Zone: 1945 Issue (German print), complete set of 20 values, u/m. (Mi. 16/35-55E). o 11 €
- 3495 American and British Zone: 1948 Posthorn ovpt (band), complete set of 17 values, all stamps canc. "FRANKFURT\*21.6.48". (Mi. 52I/68I-2000E). o 400 €
- 3496 American and British Zone: 1948 Posthorn ovpt (netz), complete set of 17 values, all stamps canc. "HANNOVER 2\*21.6.48". (Mi. 52II/68II-3000E). o 600 €
- 3497 American and British Zone: 1948 Posthorn ovpt (band/not recognised), complete set of 9 values, u/m. (Mi. I.I/IX.I-600E). \*\* 120 €
- 3498 American and British Zone: 1948 Posthorn ovpt (netz/not recognised), complete set of 9 values, u/m. (Mi. I.II/IX.II-1200E). \*\* 240 €
- 3499 American & British Zone: 1948 Buildings perf.11, complete set of 24+4 values, u/m. (Mi. 73wg/100wgI-300E). \*\* 60 €
- 3500 American & British Zone: 1948 Buildings, complete set of 15 values perf. 14x14 1/2 or 14, u/m. (Mi. 79eg/97egII-730E). \*\* 145 €
- 3501 American & British Zone: 1948 Buildings, complete set of 4 values (lange treppe), u/m. (Mi. 97II/100II-500E). \*\* 100 €
- 3502 American & British Zone: 1949 Exportmesse Hannover m/s, u. (Mi. Bl.1-350E). o 70 €
- 3503 American & British Zone: 1949 Goethe, complete set of 3 values, u/m. (Mi. 108/110-42E). o 8 €
- 3504 DBR: 80pf 1952 posthorn, plate flaw "feather over B of BUNDESPOST" and red curved line between 6 and 4 of "64", u/m. H.D. Schlegel certificate (2011). (Mi. 137III/IV). \*\* 600 €



3505



3510

3512



3507



3506



3511



3508



3509

- |      |   |    |       |
|------|---|----|-------|
| 3505 | DBR: 1951 Posthorns booklet including 9x20pf+3x4pf+3x6pf+4x10pf+“X” label. (Mi. MH-1-900E).                               | ** | 200 € |
| 3506 | D.Reich: 1kr 1872 eagle with small breast shield, u. (Mi. 7-70E).   | o  | 14 €  |
| 3507 | DBR: 1951 Posthorns (stamps from booklet): 4x20pf+3x4pf+3x6pf in bl.10, u/m. (Mi. H-B1.2-365E).                           | ** | 45 €  |
| 3508 | DBR: 1951 Posthorns (stamps from booklet): 4pf+20pf in gutter pair, u/m. (Mi. WZ3-260E).                                  | ** | 32 €  |
| 3509 | DBR: 1951 Posthorns (stamps from booklet): 6pf+“X” label+20pf in strip of 3 (including gutter pair), u/m. (Mi. WZ4-350E). | ** | 45 €  |
| 3510 | DBR: 1951 Posthorns (stamps from booklet): 20pf+“X” label+20pf in vertical strip of 3, u/m. (Mi. S6-800E).                | ** | 100 € |
| 3511 | DBR: 1951 Posthorns (stamps from booklet): “X” label+20pf in vertical pair, u/m. (Mi. S7-550E).                           | ** | 70 €  |





3513



3514



3518



3515



3516



3519



3517



3520



3521

- 3512 DBR: 1951 Posthorns (stamps from booklet): "X" label+20pf+"X" label in vertical strip of 3, u/m. (Mi. S8-950E). \*\* 120 €
- 3513 DBR: Lot including 1956/60 Dr.Heuss including 2 H-bl and 27 pairs/strips from booklets. Total 29 items. Catalog value (Michel) = 500 Euros. Very nice lot. \*\* 80 €
- ITALY**
- 3514 1890 Parcel post stamps surcharges, complete set of 6 values, m. (Sas. 50/55). \* 32 €
- 3515 5c+5c and 15c+15c 1910 Garibaldi, the high values of the set, u/m. Raybaudi certificate (2008). (Sas. 89+90-2000E). \*\* 400 €
- 3516 1922 Mazzini, complete set of 3 values. 25c hinged, the rest u/m. (Sas. 128/130). \*\*/\* 13 €
- 3517 1923 Manzoni, complete set of 6 values, m. (Sas. 151/156). \* 120 €
- 3518 1924 Surcharges on 1921 stamps, complete set of 4 values, u/m. (Sas. 158/161). \*\* 40 €
- 3519 1928 Em.Filiberto, complete set of 10 values. 10L+20L high values u/m. (Sas. 226/229+233/238). \*\*/\* 28 €
- 3520 1932 Alighieri (regular + airmail), complete set of 12+6 values, u/m. (Sas. 303/314+A26/A31). \*\* 50 €
- 3521 1932 Garibaldi (regular + airmail), complete set of 10+7 values, u/m. (Sas. 315/324+A32/A38). \*\* 60 €



3522	1932 Marcia su Roma, complete set of 16+2+2 values. All high values, airmail and Espresso stamps are u/m, 2.55L is fine used copy and few low values are hinged. (Sas. 325/340+A42/A43+E17/E18-600E).	**/o	80 €
3523	1934 World Football Cup (regular+airmail), complete set of 5+4 values, m. (Sas. 357/361+A69/A72).	*	90 €
3524	1934 Military Medals (regular+airmail), complete set of 11+9 values, u/m. (Sas. 366/376+A74/A82).	**	100 €
3525	1935 Salone aeronautico internazionale, complete set of 4 values, m. (Sas. 384/387).	*	25 €
3526	1936 Orazio (regular + airmail), complete set of 8+5 values. 30c+50c with trace of hinge, the rest u/m. (Sas. 398/405+A95/A99).	**	50 €
3527	1937 Infants aid (regular + airmail), complete set of 10+6 values. Airmail stamps hinged, regular u/m. (Sas. 406/415+A100/A105).	**/*	45 €
3528	25c 1917 Ovpt airmail stamp plus 25c/40c 1917 surcharged airmail stamp, u/m. (Sas. 1+2).	**	12 €
3529	7L 1930 Transatlantic Flight airmail stamp, m. (Sas. 25).	*	90 €
3530	1890-91 Postage dues surcharges, complete set of 3 values, m. Raybaudi certificates (2008). (Sa. 17/19-1600E).	*	300 €
3531	20c blue 1884-86 Parcel Post issue, the high value of the set, m (trace). (Sa.2-150E).	*	24 €
3532	Venezia Giulia: 1918 Ovpt on 1890/93 Italian postage dues, set to 50c (6 values), m. (Sa. 1/6-500E).	*	75 €
3533	1947-54 Postage dues, complete set of 12 values plus 500L stamp, m. (Hellas 97/19+110).	*	50 €
3534	Italian Colonies/Saseno: 1923 "SASENO" ovpt on 1901-22 Italian stamps, complete set of 8 values, u/m. (Sas. 1/8-1000E).	**	180 €
3535	Trieste and Venezia Giulia: 2x10c (Sas. 245+536) 1L (531), 2L (533) and 10L (534) ovpt "A.M.G./V.G.", ovpt inverted on all stamps, u/m. (Sas. 1d+2d+8d+9d+10d).	*	40 €
3536	C.L.N. Issues: "ARONA 24-4-45" ovpt, complete set of 10 values, m. (Sas. 1/10).	*	50 €
3537	C.L.N. Issues: "ARONA 24-4-45" ovpt on 1.25L Espresso stamp, m. (Sas. 16).	*	32 €
3538	American-British Administration of the Triest territory: 1947-48 "A.M.G./F.T.T." ovpt on 1945-48 Democratica issue, complete set of 17 values, u/m. (Sa. 1/17-450E).	**	80 €



3538



3540



3546



3547



3539



3542



3541



3549



3543



3544



3545



3548

- |                      |  |      |       |
|----------------------|--|------|-------|
| 3539                 | American-British Administration of the Triest territory: 1948 "A.M.G./F.T.T." ovpt on Risorgimento issue, complete set of 13 values, u/m. (Sa. 18/29+E5-165E).   | **   | 30 €  |
| 3540                 | American-British Administration of the Triest territory: 1950-54 "A.M.G./F.T.T." ovpt on Italia al lavoro issue, complete set of 17 values plus the 2 engraved stamps, u/m. (Sa. 89/105+106/107-142E). | **   | 25 €  |
| 3541                 | American-British Administration of the Triest territory: 1.10.1947 "A.M.G./F.T.T." ovpt on Italian airmail stamps, complete set of 6 values, u/m. (Sa. 1/6-200E).                                      | **   | 36 €  |
| 3542                 | American-British Administration of the Triest territory: 1947 "A.M.G./F.T.T." ovpt on Italian airmail stamps, complete set of 6 values, u/m. (Sa. 7/12-60E).   | **   | 11 €  |
| 3543                 | American-British Administration of the Triest territory: 1947 "A.M.G./F.T.T." ovpt on Italian Postage dues, complete set of 4 values, u/m. (Sa. 1/4-70E).  | **   | 13 €  |
| 3544                 | American-British Administration of the Triest territory: 1947-49 "A.M.G./F.T.T." ovpt on Italian Postage dues, complete set of 11 values, u/m. (Sa. 5/15-850E).  | **   | 150 € |
| 3545                 | American-British Administration of the Triest territory: 1949-54 "A.M.G./F.T.T." ovpt on Italian Postage dues, complete set of 11 values plus 500L engraved stamp, u/m. (Sa. 16/27+28-178E).           | **   | 32 €  |
| 3546                 | Italian Colonies/General issues: 1934 Word Cup Winners, complete set of 5 values. 5L+10L high values u/m, the rest hinged. Yellow spot on gum on 1.25L. (Sas. 46/50).                                  | **/* | 75 €  |
| 3547                 | Italian Colonies-Tripolitania: 1934 Airmail issue, complete set of 5 values (espressi stamps no included), u/m. (Sa. 34/38-1900E).   | **   | 300 € |
| 3548                 | Somalia: 1924 3R/5L surch. on Manzonei Italian stamp, u/m. (Sas. 60-1500E).  | **   | 200 € |
| <b>LIECHTENSTEIN</b> |  |      |       |
| 3549                 | 2fr 1933 Princess Elsa in u/m croner bl.4. (Mi. 140-640E).   | **   | 90 €  |



3550



3555



3551



3553



3552



3556



3554



3557

- |      |   |    |       |
|------|---|----|-------|
| 3550 | 5fr 1939 Prince F. Joseph II in sheetlet of 4, u/m. (Mi. 185-170E).   | ** | 40 €  |
| 3551 | 1946 Hunting, complete set of 4 values in u/m corner bl.4. (Mi. 249/251-80E).                               | ** | 16 €  |
| 3552 | 1948 Aviation pioneers, complete set of 10 values in sheetlets of 9, u/m. (Mi. 257/266+259b-1100E+).        | ** | 200 € |
| 3553 | 1949 Paintings, complete set of 9 values in sheets of 12, u/m. (Mi. 268/276-960E).                          | ** | 170 € |
| 3554 | 1950 Hunting, complete set of 3 values in sheets of 20, u/m. (Mi. 285/288-1500E).                           | ** | 350 € |
| 3555 | 1951 Land work, complete set of 12 values in bl.10 (lower part of the sheet), u/m. (Mi. 289/300-1800E).     | ** | 320 € |
| 3556 | 1951 Land work, complete set of 12 values, u/m. (Mi. 289/300-180E).   | ** | 35 €  |
| 3557 | 1951 Paintings from the princes gallery, complete set of 3 values in sheets of 12, u/m. (Mi. 301/303-576E). | ** | 100 € |



3558

3558	1951 Prince and Princess, complete set of 2 values perf. 12 1/2x12 in sheets of 20, u/m. (Mi. 304A/305A-5280E).	**	1000 €
3559	1952 Paintings, complete set of 3 values, u/m. (Mi. 306/308-140E).	**	27 €
3560	5fr 1952 Vaduz Tower in sheetlet of 9, u/m. (Mi. 309-2500E).	**	450 €
3561	1953 Paintings, complete set of 4 values in u/m corner bl.4. (Mi. 311/314-560E).	**	100 €
3562	1953 Paintings, complete set of 4 values, u/m. (Mi. 311/314-140E).	**	27 €



3559



3560



3561



3563



3562



3564

3563 1953 International Scout Conference, complete set of 4 values in u/m corner bl.4. (Mi. 315/318-256E).

\*\* 50 €

3564 1953 International Scout Conference, complete set of 4 values, u/m. (Mi. 315/318-64E).

\*\* 12 €



3566



3567



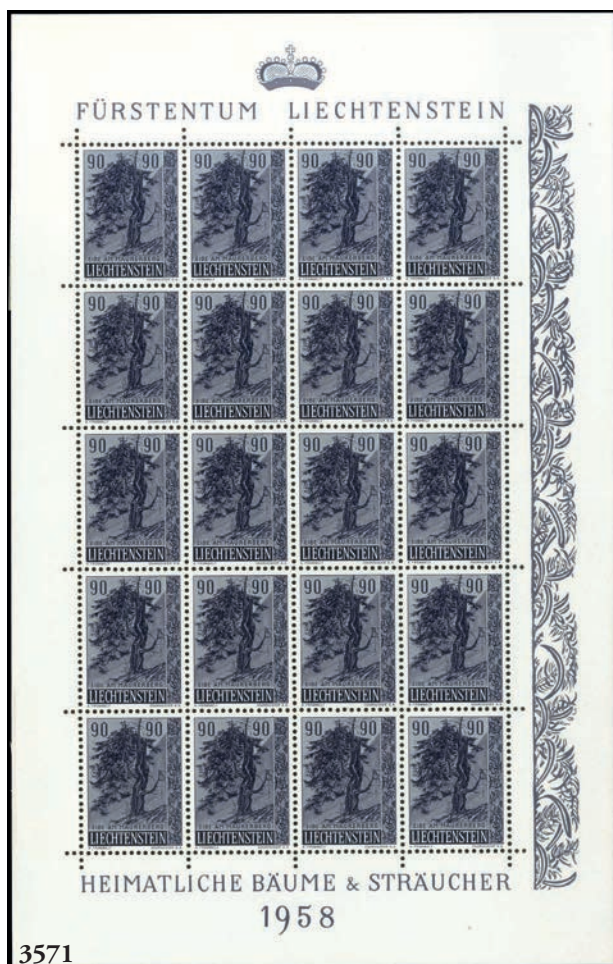
3568



3565

3565	1953 National Museum, complete set of 3 values in u/m corner bl.4. (Mi. 319/321-440E).	**	80 €
3566	1953 National Museum, complete set of 3 values, u/m. (Mi. 319/321-110E).	**	20 €
3567	1954 Surcharges on paintings from the princes gallery issue, complete set of 3 values in sheets of 12, u/m. (Mi. 326/328-552E).	**	100 €
3568	1955 Prince and Princess, complete set of 2 values in sheetlets of 9, u/m. (Mi. 332/333-2400E).	**	450 €
3569	1957 Trees, complete set of 3 values in sheets of 20, u/m. (Mi. 357/359-480E).	**	90 €
3570	1957 Christmas, complete set of 3 values in sheets of 20, u/m. (Mi. 362/364-300E).	**	55 €
3571	1958 Trees, complete set of 3 values in sheets of 20, u/m. (Mi. 371/373-560E).	**	100 €
3572	1958 Christmas, complete set of 3 values in sheets of 20, u/m. (Mi. 374/376-260E).	**	50 €







3573



3576



3577



3574



3578

- |      |  |    |       |
|------|--|----|-------|
| 3573 | 1959 Trees, complete set of 3 values in sheets of 20, u/m. (Mi. 377/379-460E).         | ** | 85 €  |
| 3574 | 1959 Christmas, complete set of 3 values in sheets of 20, u/m. (Mi. 386/388-340E).     | ** | 65 €  |
| 3575 | 1960 Airmail issue, complete set of 4 values in sheets of 20, u/m. (Mi. 391/394-540E). | ** | 100 € |



3575



3582



3579



3580

- |      |   |    |       |
|------|---|----|-------|
| 3576 | 1960 Trees, complete set of 3 values in u/m corner bl.4. (Mi. 399/401-160E).  | ** | 32 €  |
| 3577 | 1960 Trees, complete set of 3 values, u/m. (Mi. 399/401-40E).   | ** | 8 €   |
| 3578 | 1960 Prince and princess, complete set of 2 values and 1964 1.70fr prince Hans-Adam in sheets of 16, u/m. (Mi. 402/403+439-128E). | ** | 24 €  |
| 3579 | 1961 Manessescripts (I), complete set of 4 values in sheets of 20, u/m. (Mi. 406/410-200E).                                       | ** | 35 €  |
| 3580 | 1962 Manessescripts (II), complete set of 4 values in sheetlets of 20, u/m. (Mi. 420/423-100E).                                   | ** | 18 €  |
| 3581 | 5fr 1963 Prince F. Joseph jubilee in sheetlet of 8, u/m. (Mi. 427-48E).   | ** | 8 €   |
| 3582 | 1948 Vaduz Stamp Exhibition m/s, u/m. (Mi. Bl.1).   | ** | 650 € |



3583



3584



3587



3588



3589



3590



3585



3586



3591



3592



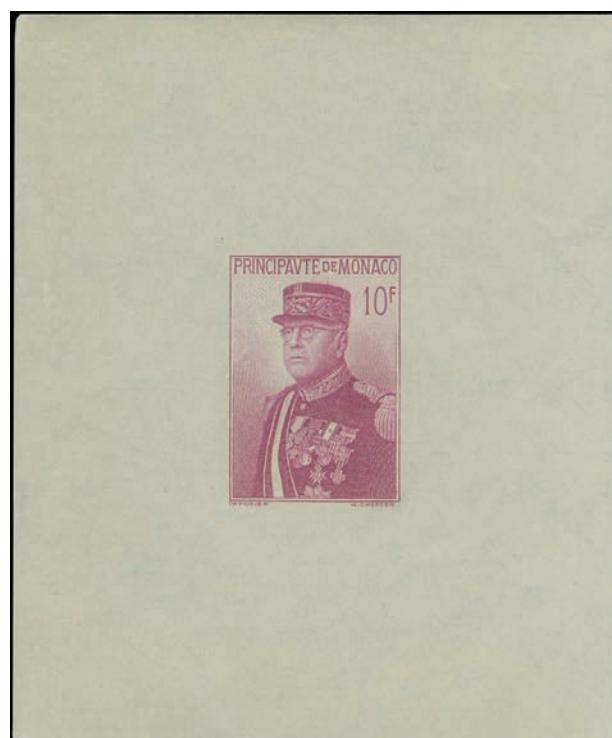
3596



3593



3597



3599



3594



3598



3595

- 3583 1936 Philatelic Exhibition m/s, u/m. (Mi. Bl.2-80E). \*\* 18 €
- 3584 1938 Philatelic Exhibition m/s, u/m. (Mi. Bl.3-80E). \*\* 18 €

**LUXEMBOURG**

- 3585 2x5Fr 1921 Landscapes, one perf 11 1/2x11, while the other 12 1/2, u/m. (Mi. 136A+136B-115E). \*\* 20 €
- 3586 1938 Wilibrord issue, complete set of 6 values, u/m. (Mi. 309/314-70E). \*\* 16 €
- 3587 1951 European agreement, complete set of 6 values in u/m bl.4. (Mi. 478/483-880E). \*\* 180 €
- 3588 1951 European agreement, complete set of 6 values, u/m. (Mi. 478/483-220E). \*\* 50 €
- 3589 1951 L.Menager, complete set of 4 values, u/m. (Mi. 484/487). \*\* 9 €
- 3590 1956 Europa, complete set of 3 values, u. (Mi. 555/557-80E). o 17 €
- 3591 1923 Princess Elisabeths birth m/s, u/m. (Mi. Bl.1I-2000E). \*\* 450 €

**MONACO**

- 3592 1885 Prince Charles III, complete set of 10 values. 2c+5F with oxidization (5F heavily), 1F with heavy hinge, m. (Yv. 1/10). \* 350 €
- 3593 1922-23 Prince Albert and Landscapes, complete set of 11 values, u/m. (Yv. 54/64-160E). \*\* 35 €
- 3594 1933 Landscapes, complete set of 17 values, u/m. (Mi. 120/136-950E). \*\* 200 €
- 3595 1948 London Olympic Games (regular+airmail), 2 complete sets of 5+4 values, u/m. (Yv. 319/323+32/35-109E). \*\* 20 €
- 3596 1949 Prince Albert I birthday centenary (regulars + airposts), complete set of 14 values, u/m. (Mi. 357/370-36E). \*\* 9 €
- 3597 1949 Airmail issue, complete set of 3 values, u/m. (Mi. 394/396-200E). \*\* 42 €
- 3598 1955 Sea birds, complete set of 4 values perf. 11, u/m. (Mi. 502A/505A-420E). \*\* 90 €
- 3599 1938 Louis II m/s, u/m. (Mi. Bl.1-150E). \*\* 35 €



3600



3601



3606



3605



3602



3603



3604



3607



3608



3609



3610



3611



3612



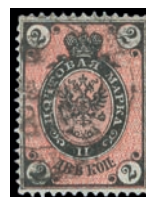
3613



3614



3615



3616



3617



3618

3600 1949 Red Cross m/s imperforate, u/m. (Mi. Bl.3B-400E).

\*\* 80 €

3601 1951 Red Cross m/s perforate, u/m. (Mi. Bl.4A-520E).

\*\* 100 €

**PORTUGAL**

3602 1925 C.C.Branco, complete set of 31 values, m. (Mi. 347/377).

\* 60 €

3603 1931 N.A.Pereira, complete set of 6 values, m. (Mi. 559/564).

\* 55 €

3604 1940 Portugese Legion, complete set of 8 values, m. (Mi. 606/613).

\* 32 €

3605 1946 III Centenario da proclamacao da padroeira m/s, u/m. (Mi. Bl.12-110E).

\*\* 25 €

3606 1941/1945, Three M/S, u/m. (Mi. Bl.2,4,7 - 740E).

\*\* 150 €

**RUSSIA (Former U.S.S.R.)**

3607 10kop 1857 Coat of arms imperforate, u. (Mi. 1).

o 250 €

3608 10kop 1858 Coat of arms, u. (Mi. 2).

o 100 €

3609 10kop 1858 Coat of arms, u. (Mi. 5).

o 5 €

3610 20kop 1858 Coat of arms, m. (Mi. 6).

\* 250 €

3611 3kop 1864 Coat of arms perf. 12 1/4x12 1/2, u. (Mi. 10).

o 45 €

3612 1866 Coat of arms, complete set of 6 values, u. (Mi. 12y/17y).

o 40 €

3613 20kop 1865 Coat of arms, u. (Mi. 16y).

o 10 €

3614 1866 Coat of arms, complete set of 6 values, u. (Mi. 18x/23x).

o 15 €

3615 1875 Coat of arms, complete set of 5 values, u. (Mi. 24x/28x).

o 5 €

3616 2kop 1875 Coat of arms, u. (Mi. 24y).

o 45 €

3617 1884 Coat of arms, complete set of 8 values, u. (Mi. 29a/36a).

o 5 €

3618 7kop 1875 Coat of arms, m. (Mi. 25x).

\* 5 €



3624

3619	7kop 1875 Coat of arms, u. (Mi. 25y).	o	15 €
3620	3.50R 1884 Coat of arms, u. (Mi. 38y-800E).	o	250 €
3621	1889/1904 Definitives, complete set of 5+9 values, u. (Mi. 40x/44x+45x/56x).	o	10 €
3622	1904 Military aid, complete set of 4 values, m. (Mi. 57/60).	*	10 €
3623	1906 Coat of arms, complete set of 2 values, u. (Mi. 61A/62A).	o	5 €
3624	4kop 1917 Coat of arms in u/m imperforate bl.50 (2 sheetlets of 25 with internal gutter/upper part of the sheet). (Mi. 66IIBC).	**	15 €
3625	1913 300 Years Romanov Dynasty, complete set of 13 values, m. (Mi. 82/98).	*	70 €
3626	1914 Womens Patriotic League, complete set of 4 values, u/m. (Mi. 99A/102A).	**	10 €
3627	200R 1921 October Revolution 4th anniv. never issued stamp, u/m. (Mi. II).	**	40 €
3628	40R 1921 Definitives in u/m bl.16. (Mi. 155y).	**	20 €
3629	1921 Hunger aid in Volga region, complete set of 4 values, u. (Mi. 165x/168x).	o	15 €
3630	2x2250R carmine and green 1921 Hunger aid in Volga region on thin paper, green stamp u/m. (Mi. 167y/168y).	**/*	50 €
3631	1922 "PCФPC" ovpt, complete set of 5 values (surcharge in black), m. (Mi. 171a/75a).	*	5 €
3632	1922 "PCФPC" ovpt, complete set of 5 values (surcharge in red) plus 5000R/20R on thin paper, m. (Mi. 171b/75b+174by).	*	10 €





3626



3627



3628



3631



3632



3629



3634



3633



3635



3630

- 3633 1922 October Revolution 5th anniv., complete set of 6 values imperforate, m. (Mi. 195/200). \* 6 €
- 3634 45R 1922 5 Years October Revolution (airmail) in u/m bl.6. (Mi. 200x). \*\* 80 €
- 3635 1923 Labour day, complete set of 3 values, u/m. (Mi. 212a/214a). \*\* 160 €
- 3636 1924 Agricultural Industry Exhibition, complete set of 4 values imperforate in imperforate bl.4. (Mi. 224c/27c). o 40 €



3636



3638



3639



3640



3641



3642



3637



3645



3643



3644



3637	1924 Lenins death, complete set of 4 values imperforate, u. (Mi. 238/241).	*	6 €
3638	15kop 1924/25 Forces of Revolution perf. 14 1/4x14, u. (Mi. 253A).	o	100 €
3639	1924 For the Proletarians of Leningrad ovpt, complete set of 5 values imperforate, m. (Mi. 262/66).	*	5 €
3640	1924 Surcharges on never issued airmails, complete set of 4 values imperforate, u./m. (Mi. 267/70).	**	10 €
3641	1925/27 Forces of the Revolution, complete set of 20 values imperforate, u. (Mi. 271/291).	o	25 €
3642	1925 1 Year from Lenins death, complete set of 4 imperforate values, u/m. (Mi. 292B/295B).	**	50 €
3643	1925 Lenin, complete set of 2 values, u. (Mi. 296B/97B).	o	10 €
3644	1925 Lenin, complete set of 2 values in u/m imperforate pairs. (Mi. 296DX/97DX).	**	80 €
3645	1925 200 Years Science Academy, complete set of 2 values, m. (Mi. 298A/99A).	*	5 €
3646	1925 A.Popow, complete set of 2 values, m. (Mi. 300/301).	*	5 €
3647	1925 1905 Revolution 20th anniv., complete set of 3 values, m. (Mi. 302B/304B).	*	10 €
3648	28.12.1925 Issue, complete set of 3 values, u/m. (Mi. 305A/07A).	**	10 €
3649	28.12.1925 Issue, complete set of 3 values imperforate, m. (Mi. 305B/07B).	*	10 €
3650	1926 Lenin, complete set of 3 values, 1R trace of hinge, the rest u/m. (Mi. 308A/310A).	*/**	25 €
3651	1926 International Esperanto congress, complete set of 2 values, m. (Mi. 311A/312A).	*	5 €
3652	1926 Childrens welfare, complete set of 2 values without WMK, m. (Mi. 313Z/314Z).	*	7 €
3653	1927 October Revolution 10th anniv., complete set of 7 values, u. (Mi. 328/334).	o	10 €
3654	1927 Dec. Surcharges, complete set of 4 values plus the 2 imperforate stamps, m. (Mi. 335+336A/336B+337A/337B+338).	*	30 €
3655	1927 Force of Revolution, complete set of 15 values, u. (Mi. 339/353).	o	5 €
3656	1928 Red Army 10th anniv., complete set of 4 values, u/m. (Mi. 354/357).	**	15 €
3657	1929 All Union Pioneer meeting, complete set of 2 values, m. (Mi. 363/364).	*	15 €



3659



3662



3658



3660



3666



3661



3667



3668



3673



3663



3664



3669



3665



3670



3672



3679



3671



3676



3677



3681



3678



3674



3675



3680

3658	1930 Visit of the Graf Zeppelin in Moscow, complete set of 2 values perf. 12 1/2, u/m. (Mi. 390A/391A).	**	100 €
3659	1R 1930 Buildings perf. 12x12 1/2 in u/m bl.4. (Mi. 392D).	**	25 €
3660	1931 Zeppelin, complete set of 5 values, u. (Mi. 397/401).	o	25 €
3661	1931 Zeppelin, complete set of 5 values imperforate, m. (Mi. 397/401).	*	100 €
3662	1931 Zeppelin Polar Flight, complete set of 4 values, u/m. (Mi. 402A/405A).	**	100 €
3663	1931 Zeppelin Polar Flight, complete set of 4 values imperforate, u. (Mi. 402B/405B).	o	30 €
3664	15kop 1932 Zeppelin perf. 14, u. (Mi. 406B-80E).	o	15 €
3665	15kop 1932 Zeppelin perf. 10 1/2, u. (Mi. 406C-250E).	o	50 €
3666	1932 International Polar Year, complete set of 2 values perf. 12 1/2 with 1st day canc.. (Mi. 410A/411A).	o	20 €
3667	15kop 1932 Maxim Gorky 40 years active imperforate, u/m. (Mi. 412U).	**	100 €
3668	1933 October Revolution 15th anniv., complete set of 6 values, u. (Mi. 414/420).	o	50 €
3669	1932 All Unions stamps exhibition, complete set of 2 values, u. (Mi. 422/423).	o	15 €
3670	1933 All Unions Philatelic Exhibition (surcharges), complete set of 2 values, u/m. Raybaudi certificate (2001). (Mi. 427/428).	**	200 €
3671	1933 Stratosphere flights, complete set of 3 values, u. (Mi. 453/455).	o	10 €
3672	1933 Shooting of the 26 Baku Commisioners 15th anniv., complete set of 5 values, u. (Mi. 457/461).	o	8 €
3673	1933 Civil flights and airmail, complete set of 5 values. 5kop+20kop hinged (trace), the rest u/m. (Mi. 462/466).	**/*	200 €
3674	1934 Lenins death 10th anniv., complete set of 5 values, m. (Mi. 467/471).	*	50 €
3675	1934 Communist Party Activists death anniv., complete set of 2 values, u. (Mi. 474/475).	o	10 €
3676	1934 Stratosphere balloon flights crash victims, complete set of 3 values, u. (Mi. 480A/482A).	o	10 €
3677	1934 Zeppelin, complete set of 5 values, u/m. 30kop with possible trace of hinge. (Mi. 483/487).	**	300 €
3678	1934 10th anniv. of Lenins death, complete set of 6 values, u. (Mi. 488/493).	o	15 €
3679	1935 20th anniv. of the outbreak of the WWI, complete set of 5 values, u. (Mi. 494/498).	o	25 €
3680	1935 Rescue of the Tscheljuskin crew, complete set of 10 values, m. (Mi. 499/508).	*	400 €
3681	30kop 1935 Rescue of the Tscheljuskin crew, u/m. (Mi. 506Y).	**	200 €



3682



3683



3685



3684



3688



3687



3686



3689



3690

- |      |  |    |       |
|------|--|----|-------|
| 3682 | 1935 Moscows underground railway, complete set of 4 values, u. (Mi. 509/512).                            | o  | 10 €  |
| 3683 | 1935 International Spartakiad, complete set of 10 values, u. (Mi. 513/522).                              | o  | 20 €  |
| 3684 | 1935 F.Engels, complete set of 4 values, u. (Mi. 523/526).   | o  | 10 €  |
| 3685 | 1R/10kop Moscow - San Francisco Trans-Polar flight on fragment with 1st day cancelation. (Mi. 527-900E). | Δ  | 200 € |
| 3686 | 1935 3rd International Congress for the Iranian Archaelogy, complete set of 4 values, u. (Mi. 528/531).  | o  | 10 €  |
| 3687 | 40kop 1935 Comminist Party activists death anniv. perf. 14 in upper marginal bl.4, u/m. (Mi. 541C).      | ** | 150 € |
| 3688 | 50kop 1937 A.Pushkin in u/n upper marginal bl.4. (Mi. 552).  | ** | 20 €  |
| 3689 | 1937 All Unions Puskin Exhibition m/s, u/m. (Mi. Bl.1).  | ** | 15 €  |



3691



3693



3696



3697



3692



3694



3695



3698



3701



3699



3700

- |      |  |    |       |
|------|--|----|-------|
| 3690 | 1937 All Unions Architectural congress m/s, m. (Mi. Bl.2).   | *  | 10 €  |
| 3691 | 1937 All Unions Aircraft Exhibition m/s, u. (Mi. Bl.3).  | o  | 80 €  |
| 3692 | 1R 1938 Red Army 20th anniversary in u/m lower right corner bl.4. (Mi. 594).                                       | ** | 20 €  |
| 3693 | 1938 Resque of the expedition team of the North Pole research station, complete set of 4 values, m. (Mi. 614/617). | *  | 10 €  |
| 3694 | 1938 Crimean and Kaukasian landscapes, complete set of 12 values, u. (Mi. 625/636).                                | o  | 10 €  |
| 3695 | 7.10.1938 Airmail issue, complete set of 9 values, m (trace). (Mi. 637/645).                                       | *  | 25 €  |
| 3696 | 1938 Children of S. Union and KOMSOMOL 20th anniversary, 2 complete sets of 7+5 values, u. (Mi.618/624+652/656).   | o  | 5 €   |
| 3697 | 1939 Lenin, complete set of 3 values, u/m. (Mi. 687/689).  | ** | 8 €   |
| 3698 | 1939 All Unions Agricultural Exhibition, complete set of 10 values, u/m. (Mi. 699/708).                            | ** | 20 €  |
| 3699 | 1940 Icebreaker "G.Sedow", complete set of 4 values, u/m. (Mi. 741/44).  | ** | 15 €  |
| 3700 | 1940 All Unions Agricultural Exhibition, complete set of 17 values, u/m. (Mi. 763/779).                            | ** | 100 € |
| 3701 | 1940 Perekop 20th anniversary, complete set of 6 values, u/m. (Mi. 780/785).                                       | ** | 8 €   |



3702	1941 N. Schukowskis death 20th anniv., complete set of 3 values, u/m. (Mi. 801/803).	**	6 €
3703	1941 15 Kyrgyz SSR, complete set of 2 values, u/m. 15kop perf 12 1/2, 30kop perf 12x12 1/2. (Mi. 804A+805C).	**	10 €
3704	1941 Assault to the Turkish fortress Ismail 150th anniv., complete set of 4 values, u/m. (Mi. 806/809).	**	8 €
3705	1941 V. Surikow, complete set of 5 values, u/m. (Mi. 814/18).	**	100 €
3706	1941 Central Lenin Museum, complete set of 4 values, u. (Mi. 821/24).	o	15 €
3707	1942 500 Years A. Navois birthday, complete set of 2 values, u/m. (Mi. 827/828).	**	80 €
3708	30kop 1941 Red Army, u/m. (Mi. 849).	**	15 €
3709	30kop 1941 Peoples defense, u/m. (Mi. 826).	**	100 €
3710	1943 USSR medals, complete set of 2 values, u/m. (Mi. 872/873).	**	8 €
3711	1943 125 Years I. Turgenjvs birthday, complete set of 2 values, u/m. (Mi. 883/884).	**	50 €
3712	60kop 1944 Allies day stamp with blue color missing, u. (Mi. 909F-300E).	o	100 €
3713	1944 USSR medals, complete set of 4 values, u/m. (Mi. 905/908).	**	8 €
3714	1944 Liberation of Leningrand m/s, u. (Mi. Bl.4).	o	10 €
3715	1945 2 Years from the Victory in Stalingrand m/s, u. (Mi. Bl.5).	o	10 €
3716	1945-46 Airforce day (I+II), 2 complete sets of 9+9 values, u/m. (Mi. 972/80+1014/22).	**	20 €





3720



3715



3714



3716



3721



3718



3719



3717

3717	2R 1946 Victory parade with double vertical perforation at left, u. (Mi. 1012).	o	10 €
3718	1946 Soviet Union medals, complete set of 15 values, u/m. (Mi. 1025/1039).	**	10 €
3719	1946 Soviet Union medals, complete set of 8 values, u/m. (Mi. 1048/1055).	**	10 €
3720	1946 25 Years Soviet stamp, complete set of 3 values in u/m bl.4. (Mi. 1071/73).	**	25 €
3721	1947 25 Years Soviet stamps, complete set of 3 imperforate m/s, u/m. (Mi. Bl. 6/8).	**	100 €



3722



3723



3724

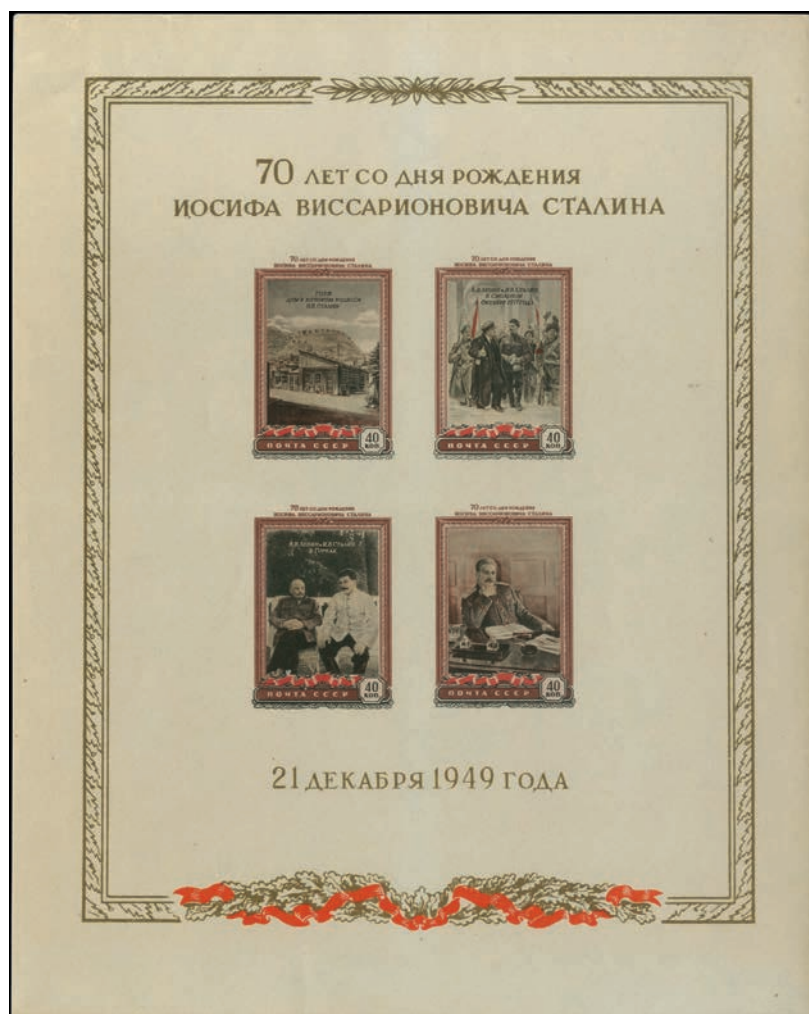


3725



3726

3722	1947 29 Years October Revolution m/s, u/m. (Mi. Bl.9).	**	70 €
3723	1949 25 Years of V.I.Leninss death m/s, u. (Mi. Bl.11A).	o	120 €
3724	1949 25 Years of V.I.Leninss death m/s imperforate, m. Certificate A. Diena (1994). (Mi. Bl.11B).	*	400 €
3725	1949 A.Puskin m/s, u. (Mi. Bl.12).	o	20 €
3726	1950 Moscows planned high buildings, complete set of 8 values, u/m. (Mi. 1527/34).	**	150 €



3727



3728



3731



3732



3729



3730

3727	1949 J.Stalins 70th birthday m/s, u/m. (Mi. Bl.13).	**	150 €
3728	1955 "СЕВ. ПОЛЮС/МОСКВА 1955" ovpt on airmails, complete set of 2 values, u/m. (Mi. 1789/90).	**	10 €
3729	1955 Moscow, All Unions Agricultural Exhibition, set of 3 m/s. (Mi. Bl.16/18).	*	10 €
3730	1956 200 Years Moscow Lomonosow University, set of 2 m/s, u. (Mi. Bl. 19/20).	o	5 €
3731	1957 6th World Student Games, Moscow, complete set of 3 values imperforate, u/m. (Mi. 1945B/49B).	**	60 €
3732	40kop 1957 Satellite Sputnik 1, u. (Mi. 2026).	o	5 €



3733



3735



3737



3739



3738



3740

3733	1957 Moscow International Philatelic Exhibition m/s, u/m. (Mi. Bl.21).	**	6 €
3734	1958-59 Airplanes, 3 complete sets of 3+3+1 values imperforate, u/m. (Mi. 2106B/08B+2169B/71B+2193B).	**	6 €
3735	1957 25th Anniv. from the establishment of the 1st research station "North Pole 1" m/s, u/m. (Mi. Bl.27).	**	15 €
3736	60kop. 1960 Helicopter Mi-4 over Kremlin in 5 full sheets of 100, u/m. (Mi. 2324Z-500E).	**	40 €
3737	1R 1961 22nd Convention of the Communist Party in u/m bl.4 imperforate at right. (Mi. 2541).	**	300 €
3738	1R 1961 22nd Convention of the Communist Party in u/m bl.4. (Mi. 2541).	**	40 €
3739	1962 25th Anniv. from the establishment of the 1st research station "North Pole 1" m/s with ovpt, u/m. (Mi. Bl.30-120E).	**	45 €
3740	1964 Tokyo Olympic Games (II+III) m/s, u/m. (Mi. Bl.33+Bl.35).	**	120 €
3741	15kop. 4.8.1978 issue in 5 full sheets of 100, u/m. (Mi. 4449-300E).	**	10 €



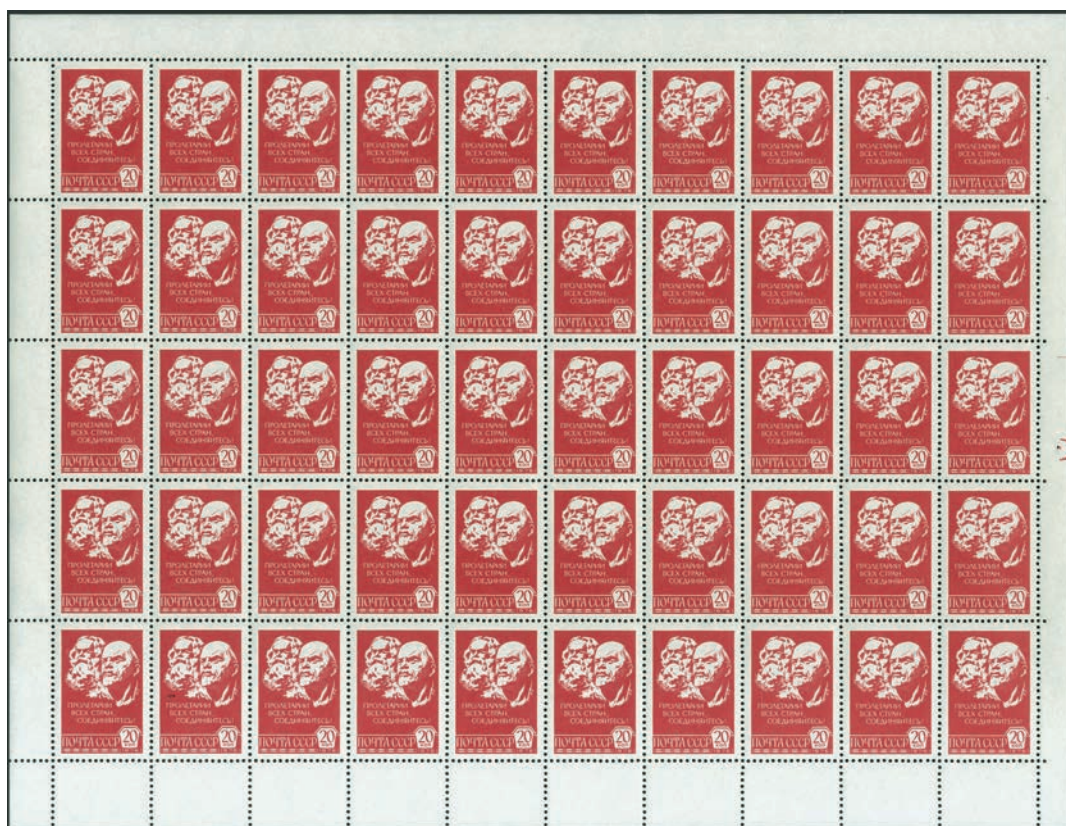
3734



3736



3741



3742



3743

3742	20kop. 8.9.1977 issue in 5 full sheets of 50, u/m. (Mi. 4637-300E).	**	10 €
3743	2r. 5.9.1984 issue in 5 full sheets of 50, u/m. (Mi. 5428AvI-1000E).	**	20 €
3744	5kop. 3.12.1990 issue in 5 full sheets of 40, u/m. (Mi. 6153-60E).	**	5 €
3745	5kop+10kop 1987 West-European painters works of art in Ermitage Museum in sheetlets of 8, u/m. (Mi. 5718+5719).	**	80 €
3746	10kop 1987 West-European painters works of art in Ermitage Museum in sheetlet of 8, u/m. (Mi. 5719).	**	40 €



3745



3746



3744



3748



3749



3750

- |      |  |    |      |
|------|--|----|------|
| 3747 | 2004 Monasteries of Russian Orthodox Church complete set of 5 values in booklet, u/m. Only 3000 items issued. (Mi. 1149/53). | ** | 50 € |
| 3748 | 2002 St. Petersburg, complete set of 5 values, u/m. (Mi. 976/980-100E).  | ** | 25 € |
| 3749 | 5k 1863 City post Moscow - St. Petersburg in u/m upper marginal bl.4. (Mi. 2).   | ** | 80 € |



3747



3751



3752



3756



3753



3754



3755



3757



3759



3758



3760



3761



3763



3762



3764



3765



3766



3767

- 3750 5k 1863 City post Moscow - St. Petersburg, u. (Mi. 2-500E). o 100 €
- 3751 1922 Airmail consulate post for Germany, complete set of 2 values, u/m. (Mi. 1/2). \*\* 100 €
- 3752 1922 Airmail consulate post for Germany, complete set of 2 values, u/m. (Mi. 3/4). \*\* 200 €

**SPAIN**

- 3753 12c lilac 1851 QI II, u. (Mi. 7w-200E). o 45 €
- 3754 12cu lila 1852 QI II, u. (Mi. 13-150E). o 35 €
- 3755 6cs carmine 1854 coat of arms, mng. VF. (Mi. 26w). (\*) 50 €
- 3756 1R blue + 2R dark lilac in pair 1856 QI II (WMK líneas cruzadas), u. (Mi. 37+38-250E). o 60 €
- 3757 2cs 1856 Queen Isabella II yellow-green, m. (Mi. 39-550E). \* 135 €
- 3758 4cu 1856 carmine QI II (no WMK) on white paper in strip of 4, m. (Mi. 40b-20E). \* 250 €
- 3759 2R 1856 Queen Isabella II violet, m. Superb. (Mi. 42-70E). \* 18 €
- 3760 2cs 1860 Queen Isabella II yellow-green on greenish, m. VF. (Mi. 43-350E). \* 85 €
- 3761 4cs orange 1860 QI II, m. (Mi. 44-40E). \* 10 €





- 3762 12cs 1860 Queen Isabella II carmine on yellowish, m. Very narrow margins. (Mi. 45-350E). \* 60 €
- 3763 2R 1860 QI II lilac on pale lilac in used pair. Superb. (Mi. 48-20E). o 5 €
- 3764 19c carmine 1862 QI II, m. (Mi. 52-190E). \* 35 €
- 3765 2c rose 1865 QI II, m. (Mi. 61-300E). \* 60 €
- 3766 1R green 1865 QI II, mng. (Mi. 71-1800E). (\*) 250 €
- 3767 2c rose 1866 QI II, u/m. Yellow toning on a perf. (Mi. 73-280E++). \* 45 €
- 3768 10c green 1866 QI II, m. (Mi. 77-300E). \* 60 €
- 3769 25m blue 1868 QI II, m. One short perf at top. (Mi. 92-280E). \* 30 €
- 3770 50M brown-lilac and 200M bluish green 1868/69 QI II, m. (Mi. 93+95-202E). \* 30 €
- 3771 4/4c ultramarine 1872 royal crown bl.4, m. (Mi. 109-110E). \* 23 €
- 3772 1889+1899 King Alfons XIII issues (kid), set of 11+2 values (20c+1pt-1889/10c 1899 are missing), m. A second 75c hinged and a second 4pt mng stamps also included. (Mi. 189/192+194/198+200/201+202/203-2060E+++). \* 300 €
- 3773 1924 King Alfonso XIII, complete set of 3 values, m. 10ptas perf. 13x12 1/2, the other two 13 1/2x12 1/2. (Mi. 294Ab/296Ab). \* 32 €
- 3774 1951 QI I 500th birthday anniversary (II), complete set of 5 values, u/m. (Mi. 998/1002-50E). \*\* 9 €
- 3775 1958 National Philatelic Exhibition, complete set of 2 m/s imperforate, u/m. (Mi. Bl.13/14-60E). \*\* 12 €
- 3776 1854 Official stamps, complete set of 4 values, mng. 1/2o thinned. (Mi. 1/4-95E). (\*) 15 €
- 3777 10c ultramarine 1874 "Justice" in imperforate u/m bl.4. Oily spot on one. (Mi. U137-68E). \*\* 15 €
- 3778 Correo Carlista: 1873-75 all the 6 stamps issued (Valencia, Navarra & Cataluna), m. (Mi. 11+2/6-1105E). \* 275 €



3779



3780



3781



3782



3783



3785



3784



3786



3789



3787



3788



3791



3795



3790



3792



3793

## SWEDEN

3779 1924 UPU 50th anniversary, complete set of 15 values, u/m. G.Biondi (2011) certificate (2011). (Mi. 159/173-1500E). \*\* 330 €

## SWITZERLAND

3780 70c 1908 Seating Helvetia in u/m bl.4. (Mi. 108x-260E). \*\* 40 €

3781 1912 Pro-Juventute, complete set of 3 values, u/m. (Mi. I/III-495E for a hinge set). \*\* 210 €

3782 1915 Pro Juventute, complete set of 2 values, u/m. (Mi. 128/129). \*\* 40 €

3783 1917 Pro Juventute, complete set of 3 values, u. (Mi. 133/135-110E). o 24 €

3784 1918 Pro Juventute, complete set of 2 values, u/m. (Mi. 143/144). \*\* 10 €

3785 1914 Landscapes, complete set of 3 values plus 3F 1918 red stamp, m. (Mi. 121/123+142-1100E). \* 240 €

3786 3F 1918 Landscapes stamp, u/m. (Mi. 142). \*\* 50 €

3787 1921 Pro Juventute, complete set of 3 values, u/m. (Mi. 172/174). \*\* 15 €

3788 1928 Landscapes, complete set of 3 values, m. (Mi. 226/228). \* 120 €

3789 1929 Airmail issue, complete set of 2 values, m. (Mi. 233x/234x). \*\* 20 €

3790 1936 Landscapes, complete set of 9 values, u/m. (Mi. 297/305-45E). \*\* 9 €

3791 1955 re-issue of 1938 definitives, complete set of 3 values, u/m. (Mi. 328x/330x-45E). \*\* 10 €

3792 1938 definitives, complete set of 3 values on bluish paper, m. (Mi. 328v/330v). \* 25 €



3794



3797



3798



3805



3796



3799



3806



3800



3802



3803



3801



3804

3793	11.5.1942 re-issue of 1938 definitives, complete set of 3 values, m. (Mi. 328w/330w).	*	25 €
3794	1939 National Exhibition, complete set of 9 values, u/m. (Mi. 335/343-35E).	**	8 €
3795	1939 National Exhibition, complete set of 12 values in u/m bl.4. (Mi. 344/355-140E).	**	30 €
3796	1941 Airmail issue, complete set of 8 values plus 1948 same type complete set of 2 values. 3c 1948 stamp hinged (trace), the rest u/m. (Mi. 387/394+506/507-160E+).	**	35 €
3797	Switzerland. 1941, 1942, 1943 and 1943 "PRO PATRIA" issues, u/m. VF. (Mi. 396/397, 408/409, 420/421 and 431/434 - 15,50 euros).	**	4 €
3798	1942 Waste collection, complete set of 3 values, u/m. (Mi. 405/407-17E).	**	4 €
3799	1FR 1943 ovpt airmail stamp in u/m corner bl.4. (Mi. 422-26E).	**	5 €
3800	1945 Armistice in Europe, complete set of 13 values, m. VF. (Mi. 447/459).	*	50 €
3801	1945 Armistice in Europe, complete set of 13 values, m. VF. (Mi. 447/459).	o	220 €
3802	2.50F 1947 Swissairs 1st Flight Genf-NY in u/m bl.4. (Mi. 479).	**	15 €
3803	1950. "PRO PATRIA", complete set of 5 values, u/m. VF. (Mi. 545/549 - 25 euros).	**	6 €
3804	1951 Pro Patria, complete set of 5 values, u/m. (Mi. 555/559).	**	5 €
3805	1953. Switzerland. 2 complete sets "PRO PATRIA" and "PRO JUVENTUTE", u/m. VF. (Mi. 580/584 - 588/592 - 28 euros).	**	7 €
3806	1955. Switzerland. 2 complete sets "PRO PATRIA" and "PRO JUVENTUTE", u/m. VF. (Mi. 613/617 and 618/622 - 28 euros).	**	7 €

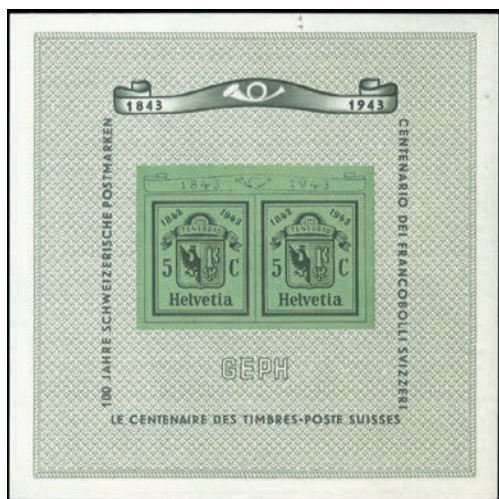


3807 Dada centenary, complete set of 2 values in sheetlets of 10, u/m. (Mi. 2341/42-50E).

\*\* 10 €

3808 1936 Pro Patria m/s, u. (Mi. Bl.2-260E).

o 60 €



3812



3814



3816



3815



3813



3817

3809	1938 Aarau philatelic exhibition m/s, u/m. (Mi. Bl.4).	**	17 €
3810	1942 Pro Patria m/s, u/m. (Mi. Bl.7-100E).	**	22 €
3811	1943 Swiss stamp centenary m/s, u/m. (Mi. Bl.8).	**	22 €
3812	1943 GEPH/Swiss stamp centenary m/s, u/m. (Mi. Bl.10-75E).	**	17 €
3813	1945 War victims m/s, u/m. (Mi. Bl.11-220E).	**	45 €
3814	1945 Pro Juventute m/s, u/m. (Mi. Bl.12-160E).	**	35 €
3815	1948 IMABA m/s, m. (Mi. Bl.13-90E).	**	20 €
3816	1951 LUNABA m/s, u/m. (Mi. Bl.14-260E).	**	55 €
3817	1955 Lausanne Philatelic Exhibition m/s, u/m. (Mi. Bl.15).	**	20 €



3818



3819



3820



3821



3822



3823



3824



3826



3827



3825



3828



3829



3830

3818	1959 NABAG and 1960 Pro Patria m/s, u/m. (Mi. Bl.16+Bl.17).	**	10 €
3819	BIT: 1937 ovpt on Landscapes Swiss stamps, complete set of 9 values, u/m. (Mi. 39/47-2200E).	**	480 €
3820	BIT: 1950 ovpt on Swiss stamps, complete set of 11 values canc. to order. (Mi. 83/93-140E).	o	30 €
3821	International Refugies Organization: 1950 ovpt on Swiss stamps, complete set of 8 values, u/m. (Mi. 1/8-170E).	**	37 €
<b>ASIA ( Except Middle East)</b>			
3822	Kuwait: 1961 definitives, complete set of 18 values, u/m. (Mi 145/162-85E).	**	20 €
3823	China P.R.: 1971 Revolutionary Monuments, complete set of 11 values, mng. (Mi. 1083/1093-25E).	(*)	10 €
3824	P.R.China: 1954 Economic construction, complete set of 8 values, mng. (Mi. 238/245-13E).	(*)	6 €
3825	China P.R.: 1954 Ancient treasures, complete set of 4 values, mng. (Mi. 249/52).	(*)	3 €
3826	China P.R.: 1955 Successful 1st 5-year plan, complete set of 9 values, u/m. (Mi.288/296-40E).	**	18 €
3827	China P.R.: 1958 Ancient China Pagodas and Early Fossils of China, 2 complete sets of 4+3 values, mng. (Mi.365/368+369/371-27E).	(*)	12 €
3828	China P.R.: 1958 Victorious Return of Chinese Peoples Volunteers, complete set of 3 values, mng. (Mi.413/415-24E).	(*)	11 €
3829	China P.R.: 1958 Forestry, complete set of 4 values, u/m. (Mi.416/419-20E).	(*)	9 €
3830	China P.R.: 1959 Peoples Communes, complete set of 12 values, u/m. (Mi.454/465-55E).	**	25 €
3831	China P.R.: 1959 10th Anniv. of Founding of P.R. of China, complete set of 8 values, u/m. (Mi.473/480-60E).	**	27 €
3832	China P.R.: 1959 10th Anniv. of Chinese Youth Pioneers, complete set of 6 values, u/m. (Mi.485/490-90E).	**	40 €
3833	P.R.China: 1959 1st National Games of P.R. of China, complete set of 16 values, mng. (Mi.495/510-160E).	(*)	72 €
3834	China P.R.: 1960 50th Anniv. of International Womens day, complete set of 4 values, u/m. (Mi.518/521-64E).	**	30 €



3832



3833



3835



3838



3836



3837



3839



3831



3834



3840



3841



3842



3844



3845



3846



3843

- |      |   |     |       |
|------|---|-----|-------|
| 3835 | P.R. China: 1960 goldfishes, complete set of 12 values, u. (Mi. 534/545-130E).  | o   | 40 €  |
| 3836 | China P.R.: 1960 15th Anniv. of Korea Liberation, complete set of 2 values, u/m. (Mi.553/554-180E).   | **  | 80 €  |
| 3837 | China P.R.: 1965 15th Anniv. of Founding of D.R. of Vietnam, complete set of 2 values, u/m. (Mi.557/558-50E).                                     | **  | 22 €  |
| 3838 | China P.R.: 1960 Patriotic Health Campaign, complete set of 5 values, u/m. (Mi.559/563-50E).  | **  | 23 €  |
| 3839 | China P.R.: 1962 Lu Xuns birthday stamp plus 1965 10th anniversary of Bandung Conference, complete sets of 1+2 values, u/m. (Mi.621+861/862-17E). | **  | 8 €   |
| 3840 | China P.R.: 1962 Red-Crowned Cranes, complete set of 3 values, u/m. Yellow spots on gum. (Mi.640/642-170E).                                       | **  | 30 €  |
| 3841 | China P.R.: 1962 Chinese Folk Dances (I), complete set of 6 values, mng. (Mi.657/662-30E).  | (*) | 13 €  |
| 3842 | China P.R.: 1962 Scientists of Ancient China (II), complete set of 8 values, u/m. (Mi.667/674-180E).  | **  | 80 €  |
| 3843 | China P.R.: 1963 Children, complete set of 12 values, u/m. (Mi.702A/713A-85E).  | **  | 40 €  |
| 3844 | China P.R.: 1963 Chinese Folk Dances (II), complete set of 6 values, mng. (Mi.714/719-24E).   | (*) | 11 €  |
| 3845 | China P.R.: 1963 Chinese Folk Dances (III), complete set of 6 values, mng. (Mi.720/725-30E).  | (*) | 13 €  |
| 3846 | P.R.China: 1963 Butterflies, complete set of 10 values, mng. (Mi.726/735-340E).   | (*) | 150 € |



3847



3848



3849



3852



3850



3853



3851



3856



3855



3865



3854



3859



3857



3858

3847	China P.R.: 1963 Giant Panda, complete set of 3 values, u/m. (Mi.736A/738A-170E).	**	80 €
3848	China P.R.: 1963 Golden Haired Monkey, complete set of 3 values imperforate, u/m. (Mi.741B/743B-400E).	**	180 €
3849	China P.R.: 1963 Support South Vitnamese Liberation, complete set of 2 values, u/m. (Mi.774/775-25E).	**	12 €
3850	China P.R.: 1964 Intellectual youths in countryside, complete set of 4 values, u/m. (Mi. 819/822-28E).	**	11 €
3851	P.R.China: 1964 Buildings, complete set of 12 values, u/m. (Mi. 846/857-30E).	**	14 €
3852	China P.R.: 1965 Chinese and Japanese Youth Friendship gathering, complete set of 5 values, u/m. (Mi.890/894-25E).	**	12 €
3853	China P.R.: 1966 Childrens games, complete set of 8 values, u/m. (Mi. 919/926-25E).	**	10 €
3854	China P.R.: 1970 Cultural Revolution, complete set of 2 values, mng. (Mi.1055/1056-20E).	(*)	9 €
3855	P.R.China: 1970 Revolutionary monuments (white paper), complete set of 6 values, u/m. (Mi. 1057/1062-26E).	**	12 €





3862



3860



3863



3861



3864



3867



3866



3869



3868

3856	China P.R.: 1970 Modern Beijing Opera "Taking Tiger Mountain by Strategy", complete set of 6 values, u/m. (Mi.1063/1068-360E).	**	160 €
3857	China P.R.: 1964 Ready to Punish Severely the Invading Enemy stamp perf. 11 1/2x10, u/m. (Mi.1069D-45E).	**	20 €
3858	China P.R.: 1971 50th Anniv. of Founding of Chinese Communist Party, complete set of 9 values, mng. (Mi. 1074/1082-750E).	(*)	300 €
3859	China P.R.: 1971 Revolutionary monuments, complete set of 11 values, u/m. (Mi.1083/1093-25E).	**	12 €
3860	China P.R.: 1971 30th Anniv. of Founding of the Albanian Party of Labour, complete set of 4 values, u/m. (Mi.1098/1101-180E).	**	80 €
3861	China P.R.: 1972 Shipping industry, complete set of 4 values, mng. (Mi. 1113/16-260E).	(*)	100 €
3862	China P.R.: 1973 Childrens songs and dances, complete set of 5 values in se-tenant strip, u/m. (Mi. 1135/1139-60E).	**	24 €
3863	China P.R.: 1973 Industry products, complete set of 4 values, u/m. (Mi. 1221/1224-700E).	**	280 €
3864	China P.R.: 1975 Rural women teachers, complete set of 4 values, u/m. (Mi. 1228/31-100E).	**	40 €
3865	China P.R.: 1975 Criticize Lin Biao & Confucius, complete set of 4 values, u/m. (Mi. 1238/41-100E).	**	40 €
3866	China P.R.: 1975 Farming mechanization, complete set of 5 values, u/m. (Mi. 1260/64-30E).	**	12 €
3867	China P.R.: 1976 New achievements of medical science, complete set of 4 values, u/m. (Mi. 1281/84-50E).	**	20 €
3868	China P.R.: 1976 Cadre School, complete set of 3 values, u/m. (Mi. 1285/87-30E).	**	12 €
3869	China P.R.: 1976 Live line operations, complete set of 4 values, u/m. (Mi. 1296/99-32E).	**	12 €



3870



3871



3873



3872



3879



3875



3878



3880



3881



3874



3877



3876



3884



3883

- 3870 China P.R.: 1976 Revolutionary Sacred Place, complete set of 4 values, u/m. (Mi. 1309/12-20E). \*\* 8 €
- 3871 China P.R.: 1977 Liu Hu Ians death, complete set of 3 values, u/m. (Mi. 1317/19-30E). \*\* 12 €
- 3872 China P.R.: 1977 Recovery of Taiwan, complete set of 2 values, u/m. (Mi. 1320/21-25E). \*\* 10 €
- 3873 China P.R.: 1977 Building Dazhai-type Counties, complete set of 4 values, u/m. (Mi. 1339/42-24E). \*\* 9 €
- 3874 China P.R.: 1977 National Conference on Learning Daging in Industry, complete set of 4 values, u/m. (Mi. 1343/1346-36E). \*\* 14 €
- 3875 China P.R.: 1977 Chinese Peoples Liberation Army, complete set of 5 values, u/m. (Mi. 1359/63-25E). \*\* 10 €
- 3876 China P.R.: 1977 11th National Congress of the C.P. of China, complete set of 3 values, u/m. (Mi. 1364/1366-48E). \*\* 18 €
- 3877 China P.R.: 1980 Jian Zhens statue, complete set of 3 values, u/m. (Mi.1607/1609-35E). \*\* 16 €
- 3878 China P.R.: 1980 Chinese middle ages scientists, complete set of 4 values, u/m. (Mi. 1647/1650-90E). \*\* 30 €
- 3879 China P.R.: 1964 Peonies m/s, u/m. (Mi.B1.9-4000E). \*\* 1800 €
- 3880 Saudi Arabia: Lot including 1934-57 hinged stamps includes 1934-57 definitives to 100g+200g, 1939 OFFICIALS set, 1950-53 run of various "Visit" sets ect. Some small faults. Total 36 stamps. \* 100 €
- 3881 Saudi Arabia: Lot including 1934-45 used stamps with shades. Total 41 stamps. Nice lot. o 25 €
- 3882 Saudi Arabia: 1981 3rd Islamic Summit and Industry week, 2 complete sets of 4+2 values in full sheets of 50, u/m. (Mi. 679/82+686/87-430E). \*\* 50 €
- 3883 Saudi Arabia: Lot including 1983-86 issues in complete sets in bl.4. CV approx. = 310 Euros. \*\* 50 €
- 3884 Saudi Arabia: Lot including 18 1985-86 u/m complete sets in bl.4. CV approx. = 160 Euros. \*\* 32 €
- 3885 Saudi Arabia: 1988 Food Day and Qiblatayn Mosque, 2 complete sets of 2+2 values in full sheets of 50, u/m. (Mi. 927/930-580E). \*\* 60 €



3886



3887



3888



3891



3890



3892

**AMERICA**

3886	USA: 2c 1923 W.G. Harding in u/m upper marginal plate block No.14857. (Scott 610).	**	100 €
3887	USA: 1c 1924 Huguenot-Walloon tercentenary issue in u/m left marginal plate block No.15779. (Scott 614).	**	50 €
3888	USA: 1c 1925 Lexington-Concord in u/m upper marginal plate block No.16798. (Scott 617).	**	67 €
3889	USA: 2c 1926 A.Hamiltons battery in u/m upper marginal plate block No.18767. (Scott 629).	**	60 €
3890	USA: 2c 1927 The Surrender of General Burgoyne at Saratoga in u/m lower marginal plate block No.19067. (Scott 644).	**	50 €



3893



3889



3894



3896



3895

- 3891 USA: 2c 1928 Washington at prayer in right marginal plate block No.19502. (Scott 645). \*\* 40 €
- 3892 USA: 2c 1928 "MOLLY PITCHER" ovpt in lower right corner plate block No.19070. (Scott 646). \*\* 55 €
- 3893 USA: 2c 1929 Surrender of Fort Sackville in upper marginal plate block No.19729. (Scott 651). \*\* 20 €
- 3894 USA: 2c 1929 Sullivan in u/m upper marginal plate block No.19785. (Scott 657). \*\* 37 €
- 3895 USA: 2c 1929 A.Wayne memorial in u/m lower marginal plate block No.19825. (Scott 680). \*\* 20 €
- 3896 USA: 2c 1929 Monongahela River in u/m upper marginal plate block No.19839. (Scott 681). \*\* 25 €



3897



3900



3898



3899



3901



3902



3903



3905



3904



3906



3907

3897 USA: 2c 1930 Gov. J. West and Chief Shadoo in u/m upper marginal plate block No.20063. (Scott 683).

\*\* 55 €

3898 USA: 2c 1930 Statue of Washington in u/m upper marginal plate block No.20163. (Scott 688).

\*\* 33 €

3899 USA: 2c 1930 General Von Steuben in u/m lower marginal plate block No.20267. (Scott 689).

\*\* 30 €

3900 USA: 2c 1931 Rochambeau, Washington and Grasse in u/m upper marginal plate block No.20646. (Scott 703).

\*\* 20 €

**GREAT BRITAIN**

3901 1d. black of 1840 issue with three good margins and one narrow, u. (SG. 2).

o 90 €

3902 1d. red-brown on blued paper of 1841 issue, m. (SG. 8).

\* 150 €

3903 4d. vermilion in horizontal pair (plate 11), u. (SG. 94).

o 40 €

3904 1 Pound brown-lilac 1878 QV, u. (SG 129).

o 1100 €

3905 6d. on 6d. lilac (plate 18), u. (SG. 162).

o 40 €

3906 2s6d 1883-84 QV lilac, u. (SG 178).

o 40 €

3907 5s. rose, u. (Stanley Gibbons 180).

o 70 €

3908 10s 1883-84 QV pale ultramarine, u. (SG 183a).

o 100 €



3909



3910



3911



3908

**NERVE EXHAUSTION**  
 is Starvation of the nerve cells. These centres, the basis of health and vigour, suffer from under-nourishment, and by a vicious circle all the concentrated nutrient necessary for the Nerve Cells to adequately live and thrive is not absorbed from one's daily food. In this condition, due to worry, sleeplessness, overwork, etc., ordinary "tonics" are useless. Nothing has been proved to be more effective for restoring this lost Nutrition than the concentrated nerve food advocated by Dr. Muller. No cooking or preparation. You simply eat four or five pieces a day, preferably after meals. Keep this practice up for a few weeks and you will not know yourself as the same person. Dr. Muller's preparation is identical with the natural nutrient the nerve cells live upon. It is a marvellous reconstructive, and revitalizes the brain and nerve centres in a natural way. A sample box will be sent post free, together with "The Way to Health" (24th Edition) of which 500,000 copies have been circulated.  
 Write 230, THE MULLER LABORATORIES, 37, Manchester Street, Manchester Square, London, W.1.  
**THE DR. MULLER NUTRIENT BRAND OF CONCENTRATED NERVE FOOD IS SOLD BY ALL GOOD CHEMISTS.**

**DRAGES FINE FURNITURE**  
 and 50 PAY-WAY

**FREE BOOK**  
 Attach this to a postcard (i.d. stamp) with your name and address, and a handsome Free Book will be sent you  
**DRAGES LTD.**  
 73-77, Oxford St., W.1

3912



3913



3914



3915



3916



3917



3919



3918



3920

- 3909 5d. dull green, u. (SG. 193). o 50 €
- 3910 1pound 1891 QV green, u. Light crease. (SG 212). o 200 €
- 3911 1pound deep green 1911 KE, u. Light toning. (SG 320-750GBP). o 180 €
- 3912 1 1/2d 1936 KE VIII in booklet pane, 4 stamps plus 2 printed labels, u/m. (SG 459a-85GBP). \*\* 30 €

**BRITISH COMMONWEALTH**

- 3913 Bahamas: 1935 Silver Jubilee, complete set of 4 values, m. (SG 141/144-18GBP). \* 4 €
- 3914 Barbados: 1935 Silver Jubilee, complete set of 4 values, m. (SG 241/244-30GBP). \* 7 €
- 3915 British Guiana: 1935 Silver Jubilee, complete set of 4 values, m. (SG 301/304-23GBP). \* 5 €
- 3916 British Honduras: 1935 Silver Jubilee, complete set of 4 values, u/m. (SG 143/146). \*\* 8 €
- 3917 British Virgin Islands: 1935 Silver Jubilee, complete set of 4 values, m. (SG 103/106). \* 6 €
- 3918 Cayman Islands: 1935 Silver Jubilee, complete set of 4 values, m. (SG 108/111-17GBP). \* 4 €
- 3919 1935 Silver Jubilee, complete set of 4 values, u/m. (SG 144/147-70GBP). \*\* 20 €



3921



3922



3923



3924



3926



3927



3925



3928



3929



3930



3931



3932



3933

3920	Falkland Islands: 1935 Silver Jubilee, complete set of 4 values, u/m. (SG 139/142).	**	20 €
3921	Gibraltar: 1935 Silver Jubilee, complete set of 4 values, m. (SG 114/117-30GBP).	*	7 €
3922	Jamaica: 1935 Silver Jubilee, complete set of 4 values, u/m. (SG 114/117).	*	5 €
3923	1935 KGV Silver Jubilee, complete set of 4 values, 1/2d with trace of hinge, the rest u/m. (SG 210/213-50GBP).	**/*	10 €
3924	Bahamas: 1948 Royal Silver Wedding, complete set of 2 values, u/m. (SG 194/195-45GBP).	**	11 €
3925	Barbados: 1948 Royal Silver Wedding, complete set of 2 values, u/m. (SG 265/266-17GBP).	**	4 €
3926	Bermuda: 1948 Royal Silver Wedding, complete set of 2 values, u/m. (SG 125/126-45GBP).	**	11 €
3927	British Guiana: 1948 Royal Silver Wedding, complete set of 2 values, u/m. (SG 322/323-22GBP).	**	5 €
3928	British Honduras: 1948 Royal Silver Wedding, complete set of 2 values, m. (SG 164/165).	*	3 €
3929	Cayman Islands: 1948 Royal Silver Wedding, complete set of 2 values, u/m. (SG 129/130-24GBP).	**	6 €
3930	1948 Royal Silver Wedding, complete set of 2 values, u/m. 1 1/2pi in corner bl.4. (SG 166/167-60GBP).	**	15 €
3931	Dominica: 1948 Royal Silver Wedding, complete set of 2 values, m. (SG 112/113).	*	3 €
3932	Falkland Islands: 1948 Royal silver wedding, complete set of 2 values, u/m. (SG 166/167).	**	22 €
3933	Grenada: 1948 Royal Silver Wedding, complete set of 2 values, u/m. (SG 166/167).	**	6 €
3934	Jamaica: 1948 Royal Silver Wedding, complete set of 2 values, u/m. (SG 143/144).	**	7 €





3934



3936



3935



3938



3939



3940



3937



3941



3942

- 3935 Omnibus issues: 1958 Caribbean Federation, complete set of 30 values, u/m. (SG 19GBP). \*\* 5 €
- 3936 Antigua: 1903 KE definitives, complete set of 10 values, m. 2 1/2d with a gumless spot. (SG 31/40-35GBP). \* 80 €
- 3937 Twenty (20) different definitive u/m complete sets from various commonwealth countries. \*\* 100 €
- 3938 Antigua: 1953-62 QEII definitives, complete set of 15 values, u/m. (SG 120a/134-75GBP). \*\* 18 €
- 3939 Ascension: 1963 KQII issue, complete set of 14 values, u. (SG 70/83-50GBP). o 10 €
- 3940 Ascension: 1968-70 Fish (1sd+2nd+3rd), 3 complete sets of 4+4+4 values. (SG 113/120+126/129). \*\*/\* 3 €
- 3941 Bahamas: 1920 Peace celebration, complete set of 5 values. (SG 106/110-22GBP). \*\*/\* 5 €
- 3942 Bahamas: 1938-52 KGVI definitives, complete set of 17 values, m. 1pound stamp u/m. (SG 149/157a). \*\*/\* 22 €



3943



3945



3950



3951

## BARBADOS

**BADGE OF COLONY series inscribed POSTAGE & REVENUE 1925 - 1935**

The 'Badge of Colony' definitive stamp series was redesigned with the added inscription 'POSTAGE & REVENUE' and first issued for sale in 1925 to replace the smaller badge design series of 1921. Recess printed, as previously, by De La Rue and Company, eleven values in perf. 14 were initially released on 1st April 1925, following which two new values were added during 1932 along with some perforation and colour changes to the original values.

Original perf. 14 values above, issued 1/4/25. ^

Two new values and some shade changes, all in perf. 14, follow below v

issue date » 1933      1935      1934      1934      1/9/32

The perf. 13½ x 12½ reprints v

issue date » 2/32      2/32      15/8/32      2/32      8/32



3944



3946



3947



3952



3953



3955

3948



3949



3954



3956



3957

3943	Bahamas: 1938 KGVI issue, complete set of 3 values, u/m. (SG 158/160-17GBP).	**	4 €
3944	Bahamas: 1942 "1492 LANDFALL OF COLUMBUS 1492" ovpt, complete set of 14 values, u/m. (SG 162/175a-80GBP).	**	20 €
3945	Bahamas: 1948 KGVI definitives, complete set of 16 values, m. (SG 178/193).	*	9 €
3946	Barbados: 1907 Nelson centenary, complete set of 3 values, m. (SG 158/162-40GBP).	*	10 €
3947	Barbados: 1920 Victory, complete set of 11 values (1920 issued stamps, 1921 1d omitted), m. (SG 201/211).	*	40 €
3948	Barbados: 1925-35 issue, complete set with all perf. and colours varieties, total of 21 values, m. (SG 229/239-213GBP).	*	50 €
3949	Barbados: 1938-47 issue, complete set of 16 values, m. (SG 248/256a).	*	5 €
3950	Barbados: 1950 KGVI definitives, complete set of 12 values, m. (SG 271/282).	*	7 €
3951	Barbados: 1953-61 QEII definitives, complete set of 13 values, u/m. (SG 289/301-75GBP).	**	18 €
3952	Bermuda: 1883-1904 QV issue, complete set of 8 values, m. 2d (No.25) with part of gum. (SG 21/29b-170GBP).	*	40 €
3953	Bermuda: 1906/10 issue, complete set of 9 values, u. (SG 34/42-45GBP).	o	10 €
3954	Bermuda: 1920-21 Tercentenary of Representative Institutions (1st issue), complete set of 9 values, m. (SG 59/67-110GBP).	*	27 €
3955	Bermuda: 1922-34 issue, complete set of 12 values plus colour var, m. (SG 77/87-90GBP).	*	22 €
3956	Bermuda: 1936-47 KGV definitives, complete set of 9 values, m. (SG 98/106-25GBP).	**	12 €
3957	Bermuda: 1938-53 KGV definitives, complete set of 16 values. 3d+5s+10s+1pound u/m, rest hinged. (SG 110/121d).	**/*	50 €



3958



3960



3959



3961



3963



3964



3965



3966



3962



3967



3968



3969



3970



3971



3972



3973

- |      |  |    |      |
|------|--|----|------|
| 3958 | Bermuda: 1953-62 QEII definitives, complete set of 18 values plus 3d+1s3d shades, u/m. (SG 135/150+140a+145b-128GBP).        | ** | 32 € |
| 3959 | Bermuda: 1970 Surcharges on QEII definitives, complete set of 17 values, u/m. (SG 232/248-20GBP).                            | ** | 5 €  |
| 3960 | British Guiana: 1938-52 KGVII definitives, complete set of 12 values, u/m. (SG 308/319-100GBP).                              | ** | 25 € |
| 3961 | British Guiana: 1954-63 QEII definitives, complete set of 15 values, u/m. (SG 331/345-100GBP).                               | ** | 25 € |
| 3962 | British Honduras: 1938-47 KGVII definitives, complete set of 12 values, m. (SG 150/161).                                     | *  | 22 € |
| 3963 | British Honduras: 1953-62 QEII definitives, complete set of 12 values, u/m. (SG 179/190).                                    | ** | 20 € |
| 3964 | B.P. Agencies in Eastern Arabia: 1948 surcharged G.Britain KGVII definitives, complete set of 9 values, m. (SG 16/24-48GBP). | *  | 16 € |
| 3965 | British Virgin Islands: 1952 KGVII issue, complete set of 12 values, m. (SG 136/147).  | *  | 6 €  |



3966	British Virgin Islands: 1879-80 QV stamps perf.14, complete set of 2 values. 2 1/2 without gum and with yellow toning, while 1d value with new gum. (SG 24/25-195GBP).	(*)	20 €
3967	British Virgin Islands: 1956-62 QEII issue, complete set of 15 values, u/m. (SG 149/161).	**	25 €
3968	Canada/Newfoundland: 1861-1864 New colors issue, complete set of 8 values, m. VF. (SG 16/23-1080GBP).	*	250 €
3969	New Foundland: 15.8.1910 definitive issue, complete set of 11 values, m. (SG 95/105).	*	65 €
3970	Canada/New Foundland: 1887/88 new colours issue, complete set of 6 values, u. (SG 49/54-90GBP).	o	22 €
3971	Canada: 1942-48 War-effort, complete set of 14 values. 1+2+3 (purple)+4 (carmine-lake)+8c low values with trace of hinge, rest u/m. (SG 375/388).	*/**	30 €
3972	Cayman islands: 1953 QE II definitives, complete set of 15. 1s+2s+1pound u/m, the rest m. (SG 148/161a).	**	17 €
3973	Ceylon: 6d purple-brown QV, four margins, fresh colour, u. (SG 1-450GBP).	o	100 €
3974	Ceylon: 2d green 1857 QV issue, u. (SG 3-65GBP).	o	16 €
3975	Ceylon: 5d chesnut 1857 QV issue, u. (SG 5-150GBP).	o	37 €
3976	Ceylon: 9d purple-brown 1859 QV issue, u. (SG 8-900GBP).	o	200 €
3977	Ceylon: 1/2d dull mauve 1864 QV issue, m. (SG 48-80GBP).	*	20 €
3978	Ceylon: 2d grey-green 1864 QV, m. (SG 50-100GBP).	*	25 €
3979	Ceylon: 5d olive-green 1867 QV, m. (SG 66b-150GBP).	*	40 €
3980	Ceylon: 8d chocolate 1867 QV, m. (SG 68-120GBP).	*	30 €
3981	Ceylon: 2s deep blue 1867 QV issue, m. (SG 72b-150GBP).	*	35 €
3982	Ceylon: 1886 QV issue, complete set of 5 values, m. (SG 195/199-55GBP).	*	12 €
3983	Ceylon: 1891 surcharges, complete set of 2 values, m. (SG 239/240-39GBP).	*	10 €
3984	Ceylon: 1892 surcharges, complete set of 3 values, m. (SG 241/243-14.50GBP).	*	3 €
3985	Ceylon: 1908 KE issue, complete set of 3 values, m. (SG 289/291-17GBP).	*	4 €
3986	Ceylon: 1912-25 KGV issue, complete set of 14 values, m. (SG 301/318-100GBP).	*	25 €
3987	Ceylon: 1935-36 KGV issue, complete set of 11 values, m. (SG 368/378-55GBP).	*	13 €
3988	Sri Lanka: 0.25/0.15R 1978 National Youth Organization surcharged stamp with surcharge inverted in u/m pair. (Mi.491).	**	50 €
3989	1894-96 QV definitives, complete set of 10 values, m. (SG 40/49-250GBP).	*	65 €
3990	45pi dull purple & ultramarine 1904 KE issue, u/m. Superb. (SG 71-240GBP).	**	70 €
3991	9pi yellow-brown and carmine 1922 KGV issue stamp (WMK script CA), u. Scarce. (SG 97a-160GBP).	o	30 €



3993



3992



3997



3996



3994



3995



3998



3999



4000



4001



4002



4003



4004



4005



4008



4009



4012

3992	6+9+18+45pi+1pound 1928 50 years British rule, the high values of the set, u. (SG 128/132-400GBP).	o	80 €
3993	1934 KGV definitives, complete set of 11 values, u/m. (SG 133/143).	**	100 €
3994	1938-51 KGV definitives, complete set of 16 values, u/m. (SG 151/163-250GBP).	**	60 €
3995	1 1/2pi 1948 Royal Silver Wedding, extra decoration variety, u. (SG 166a-65GBP).	o	10 €
3996	1960 "ΚΥΠΡΙΑΚΗ ΔΗΜΟΚΡΑΤΙΑ" ovpt on QEII definitives, complete set of 15 values, u/m. All stamps with numbered margins. Superb. (SG 188/202).	**	80 €
3997	1960 Constitution of Republic, complete set of 3 values, u/m. 100m with plate number, the other two with numbered margins. (SG 203/205).	**	OFFER
3998	Dominica: 1938-47 definitives, complete set of 15 values, u/m. All marginal, most of them corner copies. (SG 99/109a-75GBP).	**	18 €
3999	Dominica: 1951 KGV definitives, complete set of 15 values, u/m. (SG 120/134-50GBP).	**	12 €
4000	Dominica: 1954-62 QEII definitives, complete set of 19 values, u/m. (SG 140/158-80GBP).	**	20 €
4001	Falkland Islands: 1933 Centenary of British Administration, set to 4d (6 values)m. (SG 127/132-98GBP).	*	12 €
4002	Falkland Islands: 1938-50 KEVI issue, complete set of 18 values. Few u/m values, the rest hinged. (SG 146/163).	**/*	60 €
4003	Falkland Islands: 1952 KEVI issue, complete set of 14 values. Few u/m values, the rest hinged. (SG 172/185).	**/*	22 €
4004	Falkland Islands: 1960-66 QEII definitives, complete set of 15 values, u/m. (SG 193/207-170GBP).	**	40 €
4005	Falkland: 1972 complete set of 13 values, u/m. (Yvert 204/216).	**	20 €



4010



4006



4007



4013



4015



4016



4014



4017



4018



4019



4020



4011

4006	Falkland Islands dependencies: KG VI four complete sets with overprints "Graham Land, South Orkneys, South Shetlands, South Georgia", m. (SG A1/A8, B1/B8, C1/8, D1/D8, A6a/D6a).	*	18 €
4007	Falkland Dependencies: 1954-62 QEII issue, complete set of 15 values, u/m. (SG G26/G40).	**	55 €
4008	Falkland Islands/Dependencies/South Georgia: 1963-69 QEII definitives, complete set of 16 values, m. (SG 1/16).	*	22 €
4009	Falkland Islands/Dependencies/South Georgia: 1971 Surcharges on QEII definitives, complete set of 14 values, u/m. (SG 18/31).	**	22 €
4010	Gibraltar: 2s green and blue 1905 KE, u/m. Yellow toning. (SG 62-110GBP).	**	12 €
4011	Gibraltar: 1938-51 KQVI definitives, set of 13 values (1 1/2 slate-violet low value stamp is missing), m. (SG 121/131).	*	20 €
4012	Gilbert & Ellice Islands: 1939 KGVII definitives, complete set of 12 values plus 3d perf 12 stamp, u/m. (SG 43/54+48a-42GBP).	**	10 €
4013	Grenada: 1938-50 KGVI issue, complete set of 12 values, few u/m values, the rest hinged. (SG 152/163e).	**/*	10 €
4014	Grenada: 1951 KGVI issue, complete set of 13 values, u/m. (SG 172/184).	**	9 €
4015	Grenada: 1953-59 QEII issue, complete set of 13 values, u/m. (SG 192/204).	**	14 €
4016	EIRE: 1922 T1 ovpt issue, complete set of 8 values, m. (SG 1/9-45GBP).	*	11 €
4017	EIRE: 1922 T1 ovpt issue, complete set of 8 values plus red and carmine ovpt stamps, all but 9d carmine ovpt included. (SG 1/9+4b+6b+6c+8b).	*	30 €
4018	EIRE: 1922 T2 ovpt issue, complete set of 5 values, 2d+6d stamps hinged, the rest u/m. (SG 10/15).	**/*	12 €
4019	EIRE: 1922 Ovpt by Thom issue, complete set of 14 values plus a couple of colour shades, m. (SG 30/43-110-GBP).	*	27 €
4020	EIRE: 1922-34 definitives, complete set of 12 values, u. (SG 71/82-40GBP).	o	10 €



4021	Leeward Islands: 1938-51 KGVI definitives, complete set of 19 values, 1pound +10s high values hinged, the rest but 1s u/m. (SG 95/114b).	*/**	25 €
4022	Leeward Islands: 1954 QEII issue, complete set of 15 values, few of them u/m, the rest hinged. (SG 126/140).	**/*	8 €
4023	North Borneo/Labuan: 1892-93 QV issue (no WMK), complete set of 7 values, u. (SG 39/47-75GBP).	o	18 €
4024	MALTA*1.JA.60/A25 canc. (Z4) on 1d Great Britain QV stamp in strip of 3. Two stamps with faults but rare.	o	30 €
4025	Malta: 1903 KE definitives, complete set of 7 values, u. (SG 38/44).	o	8 €
4026	1926 "POSTAGE" ovpt, complete set of 14 values, m. (SG 143/156-110GBP).	*	30 €
4027	1938 KGVI definitives, complete set of 15 values (without the 1943 color changed stamps), u/m. (SG 217/231-75GBP).	**	18 €
4028	1947 "SELF GOVERNMENT" ovpt on KGVI definitives, complete set of 15 values (without the 1953 color changed stamps), u/m. (SG 234/248-90GBP).	**	22 €
4029	3d 1954 Royal visit and 1956-58 QEII, 2 complete sets of 1+17 values, u/m. (SG 262-266/282-130GBP).	**	35 €
4030	Mauritius: 1938-49 KGVI definitives, complete set of 12 values, m. (SG 252/263).	*	15 €
4031	Mauritius: 1950 KGVI definitives, complete set of 15 values, m. (SG 276/289).	*	9 €
4032	Monserat: 1938-48 KGVI issue, complete set of 12 values, u/m. (SG 101a/112).	**	25 €
4033	Monserat: 1951 KGVI issue, complete set of 12 values, u/m. (SG 123/135).	**	16 €
4034	Montserrat: 1988 Seasells, complete set of 16 values, u/m. (Mi. 710/725-40E).	**	10 €
4035	Montserrat: 1994 FIFA World Cup, complete set of 4 values in sheetlet of 8 (plus 4 labels), u/m. 10 sheetlets in total. (Mi. 896/899-180E).	**	18 €
4036	Montserrat: 1999 Fruits, complete set of 5 values in sheetlets of 10, u/m. (Mi. 1095/1099-160E).	**	16 €
4037	Nigeria: 1965 definitives (wild animals), complete set of 14 values, u/m. (SG. 172/185-55GBP).	**	14 €
4038	Sarawak: 1955-59 QEII issue, complete set of 15 values, u. (SG 188/202).	o	7 €
4039	St Kitts-Nevis, St Christopher, Nevis and Anguilla: 1954-63 QEII issue, complete set of 15 values, m. (SG 106a/118).	*	8 €
4040	St Kitts-Nevis, St Christopher, Nevis and Anguilla: 1952 KGVI issue, complete set of 12 values, u/m. (SG 94/105).	**	6 €
4041	St Lucia: 1/2d 1881 QV green, u/m. (SG 23).	**	35 €
4042	St Lucia: 1936 KGV issue, complete set of 12 values, u/m. (SG 113/124).	**	22 €





4035



4037



4034



4038



4039



4040



4041



4042



4036



4047



4043



4044



4054



4048



4045



4046



4055



4051



4052



4050



4057



4053

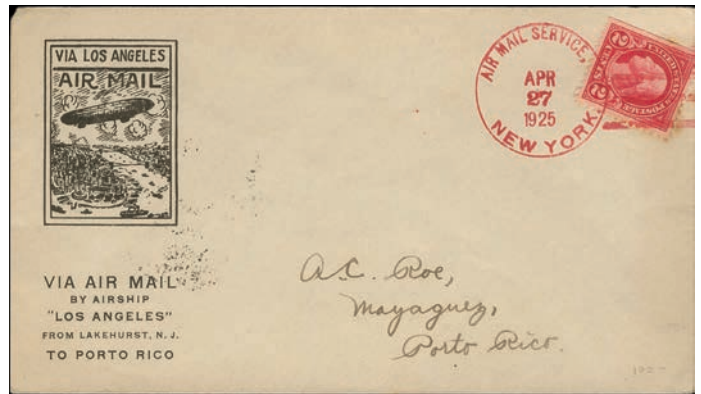


4049

4043	St Vincent: 1938-47 KG VII issue, complete set of 15 values, m. 3d stamp with yellow toning on gum side. (SG 149/159).	*	6 €
4044	St Vincent: 1955-63 QE II issue, complete set of 12 values, u/m. (SG 189/200).	**	6 €
4045	Tonga: 1920-35 definitives, complete set of 10 values, m. (SG 55/63).	*	11 €
4046	Trinidad: 5s. rose-lake, m. (SG 87).	*	20 €
4047	Trinidad & Tobago: 1938-44 KG VI issue, complete set of 14 values, m. (SG 246/256).	*	11 €
4048	Trinidad & Tobago: 1953-59 QE II issue, complete set of 12 values, u/m. (SG 267/278a).	**	10 €
4049	Turks & Caicos Islands: 1950-54 KG VII issue, complete set of 13 values, u/m. (SG 221/233).	**	20 €
4050	Turks & Caicos Islands: 1957 QE II issue, complete set of 15 values, u/m. (SG 237/250).	**	16 €
4051	Trinidad & Tobago: 1953-59 QE II issue, complete set of 12 values, u. (SG 267/278a).	o	5 €
4052	Turks & Caicos: 1971 definitives, complete set of 15 values, u/m. (Mi. 259/273-20E).	**	5 €
4053	Rhodesia & Nyasaland: 1959-62 QE definitive, complete set of 15 values. Most values hinged. (SG 18/31).	*/**	15 €



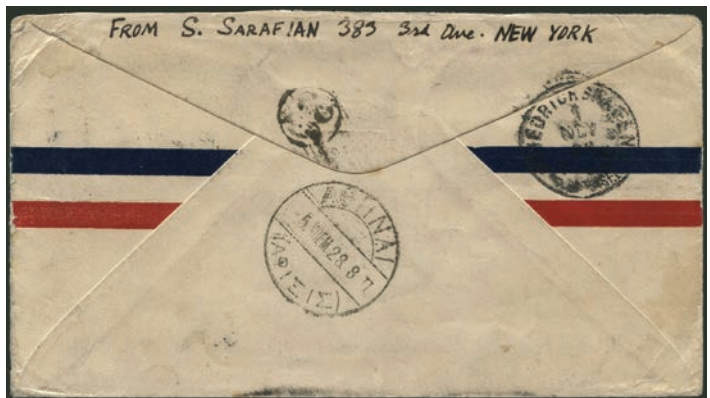
4058



4056



4059

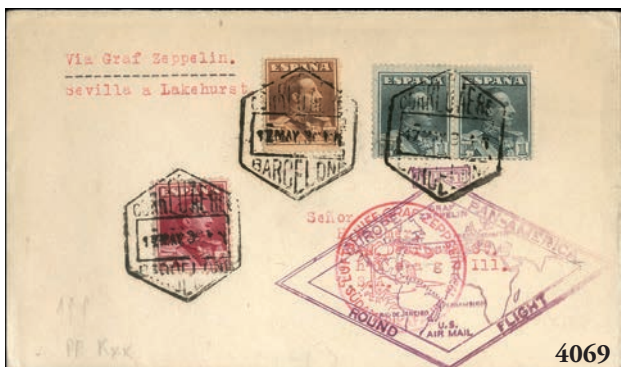


4060

4061

**ZEPPELIN FLIGHTS**

- 4054 Flug Post Karte fr. with 10pf 1912 airmail stamp and 5pg Germania canc. "Flugpost am Rhein u. am Main/Darmstadt\*17.6.12". (Mi. I+85I). PC 25 €
- 4055 D.Reich: Airmail postal card fr. with 3x30pfg 1912 airmail stamps+5pfg Germania canc. "Darmstadt\*23.6.12". (Michel III). PC 120 €
- 4056 Zeppelin post: Cover printed "VIA AIR MAIL BY AIRSHIP "LOS ANGELES" FROM LAKEHURST N.J. TO PORTO RICO" and canc. "AIR MAIL SERVICE NEW YORK\*27.APR.1925", arr. "MAYACUEZ\*9.MAY.1925". C 50 €
- 4057 1933 Zeppelin Return Rome Flight: Registered cover fr. with 12L/2L (Mi.195) +15c+1.85L/60c+10c San Marino stamps canc. "SAN MARINO\*26.MAG.33", via "ROMA\*29.V.33", arr. "PERNAMBUCO\*6.VI.33". Signed Bolaffi. (Longhi 645). C 380 €
- 4058 Zeppelin Post: Post card fr. with 2M 1928 D.Reich (Mi. 423) canc. "FRIEDRICHSHAFFEN\*10.OKT.28", arr. "NEW YORK\*16.OCT.1928". Oval cachet "Mit LuftschiffLZ 127 befördert". PC 80 €
- 4059 Zeppelin Post: Post card fr. with 2M 1928 D.Reich (Mi. 423) canc. "FRIEDRICHSHAFFEN\*10.OKT.28", via "NEW YORK\*16.OCT.1928" to Los Angeles. Oval cachet "Mit LuftschiffLZ 127 befördert". PC 80 €
- 4060 US-Germany Zeppelin 1st Flight: 1c US stationary card canc. "NEW YORK\*16.OVT", arr. "FRIEDRICHSHAFFEN\*1.NOV.28". Cachet "FIRST FLIGHT AIR MAIL/VIA GRAF ZEPPELIN/UNITED STATES -GERMANY". PS 60 €
- 4061 Airmail cover fr. with 5+10+2x15+3x20c US stamps canc. "NEW YORK\*27.OCT.1928", via "FRIEDRICHSHAFFEN\*1.NOV.1928", arr. "AΘHNAI\*5.NOE.28". (Hellas FF32). FFC 200 €





4065



4070



4072



4071

- |      |  |     |       |
|------|--|-----|-------|
| 4062 | Airmail cover fr. with 2M D.Reich (Mi. 423) canc. "FRIEDRICHSHAFEN*24.MRZ.29", via "AΘHNAI", arr. "ΘΕΣΣΑΛΟΝΙΚΗ*2.ΑΙΠ.1929". Cachet "LUFTSCHIFF GRAF ZEPPELIN ORIENTFAHRT 1929". (Hellas FF35A).  | FFC | 280 € |
| 4063 | Airmail cover fr. with 10+20+2 1/2 Danzig airmails canc. "DANZIG*22.3.29", via "FRIEDRICHSHAFEN*24.MRZ.29", arr. "AΘHNAI*30.MAP.1929". Cachet "LUFTSCHIFF GRAF ZEPPELIN ORIENTFAHRT 1929". (Hellas FF35B).   | FFC | 400 € |
| 4064 | D.Reich stationary postal card canc. "FRIEDRICHSHAFEN*22.APR.29", arr. "AΘHNAI*1?.MAI.29". Cachet "LUFTSCHIFF GRAF ZEPPELIN MITTELMEERFAHRT 1929". (Hellas FF39).  | FFC | 200 € |
| 4065 | 1929 1st America Zeppelin Flight: Cover fr. with 4m 1928 D.Reich (Mi.424) canc. "FRIEDRICHSHAFEN*15.MAY.29", via "NEW YORK*5.AUG.1929" to Chicago. Cachet "1.AMERIKAFAHRT 1929/LUFTSCHIFF GRAF ZEPPELIN".  | C   | 80 €  |
| 4066 | D.Reich: Airmail cover fr. with 4M 1928 Zeppelin canc. "FRIEDRICHSHAFEN*15.MAI.29" to USA. (Mi. 424).  | C   | 20 €  |
| 4067 | US stationary envelope canc. "NEW YORK*31.AUG.1929", via "FRIEDRICHSHAFEN*4.9.29", arr. "AΘHNAI*8.ΣΕΠ.29". Handwritten "Par Avion Graf Zeppelin/From Lakehurst to Friedrichshafen".  | FFC | 160 € |
| 4068 | 1930 1st Europe Pan-American Round Zeppelin Flight: Cover fr. with 2x4pt Spanish stamps canc. "SEVILLA*16.MAY.30" to Pernambuco. Cachet "PRIMER VIAJE A SUDAMERICA/GRAF ZEPPELIN/SEVILLA 1930".  | C   | 50 €  |
| 4069 | 1930 1st Europe Pan-American Round Zeppelin Flight: Cover fr. with 2x1+4+10pt Spanish stamps canc. "BARCELONA*17.MAY.30", via "LAKEHURST N.J.*31.MAY.1930" to Chicago.   | C   | 100 € |
| 4070 | 1931 Moscow - Stuttgart flight on registered airmail cover canc. "MOCKBA*13.7.31", via "BERLIN*14.7.31", arr. "STUTTGARD*15.7.31". Cover fr. with 1931 Zeppelin USSR issue, complete set of 5 values imperforate (Mi. 397CX/401CY-300E). Cachet "MIT LUFTPOST BEFORDERT/LUFTPOSTAMT/BERLIN C.2". | C   | 150 € |
| 4071 | Airmail cover fr. with 2x4M 1930 Zeppelin (South American flight) canc. "FRIEDRICHSHAFEN*18.5.30", via "HAVANA CUBA*2.JUN.1930" to Tegucigalpa Honduras. Airmail cachet "LUFTSCHIFF GRAF ZEPPELIN SUDAMERIKAFAHRT 1930". (Mi.439).   | C   | 200 € |
| 4072 | Airmail cover fr. with 2M+2x4M 1930 Zeppelin (South American flight) canc. "FRIEDRICHSHAFEN*18.5.30", arr. "LAKEHURST N.J.*31.MAY.1930/GRAF ZEPPELIN/EUROPE-PAN AMERICAN ROUND FLIGHT". Airmail cachet "LUFTSCHIFF GRAF ZEPPELIN SUDAMERIKAFAHRT 1930". (Mi. 438/439-1300 as stamps).            | C   | 320 € |



4074



4073



4075



4076



4077



4079



4080



4078



4084



4082



4081



4083



4086



4085

4073 Airmail cover fr. with 4M 1930 Zeppelin (South American flight) canc. "FRIEDRICHSHAFEN\*18.5.30", via "PERNAMBUCO" to USA. Airmail cachet "LUFTSCHIFF GRAF ZEPPELIN SUDAMERIKAFAHRT 1930". (Mi.439). C 100 €

4074 Europe Pan American Zeppelin Round Flight: Post card fr. with Brazilian stamps canc. "RIO DE JANEIRO\*24.MAI.30", via "LAKEHURST\*31.MAY.1930", arr. "NEW YORK\*31.MAY.1930". PC 40 €

4075 1931 Zeppelin Pollar Flight: Registered cover fr. with 35kop+2R USSR airmails imperforate (Mi 403B+405B) canc. "BRISE-GLACE MALYGUIN ARCTIQUE\*18.VII.31", arr. "FRIEDRICHSHAFEN\*31.7.31". Cachet "Mit Eisbrecher Malygin und Luftschiff Gr Zeppelin/ARCHANGELSK-NORDPOL-FRIEDRICHSHAFEN". C 150 €

#### GERMANY (REICH-WEST-EAST-BERLIN)

4076 Airmail cover fr. with 2M 1930 Zeppelin stamp (South American flight) canc. "FRIEDRICHSHAFEN\*31.3.30", via "BIELEFELD\*31.8.30" to England. Written on cover "by airship Zeppelin over Friedrichshafen - Bielefeld". Also oval cachet "MIT LUFTSCHIFF GRAF ZEPPELIN BEFORDERT". (Mi.438). C 150 €

4077 Zeppelin Post: Post card fr. with 75c Swiss airmail stamp canc. "ZURICH\*14.IX.30" to Bale. Cachet "GENEVE - AVIATION/VOL DU ZEPPELIN". PPC 80 €

#### GERMANY (REICH-WEST-EAST-BERLIN)

4078 Airmail cover fr. with 2M 1930 Zeppelin stamp (South American flight) canc. "GRAFFZEPPELIN\*23.9.1930", arr. "STOCKHOLM\*24.9.30". (Mi. 438-500E as stamp). C 150 €

4079 D.Reich: Airmail cover fr. with 2M 1930 Zeppelin (South America flight) canc. "LUFTSCHIFF GRAFZEPPELIN\*24.9.1930", arr. "HELSINKI\*24.IX.30". (Mi. 438). C 120 €

4080 Zeppelin Post: Post card fr. with 75c Swiss airmail stamp canc. "ZURICH\*12.X.30" to Bazel. Cachet "BASEL - FLUGPLATZ ZEPPELINPOST". PPC 80 €

4081 Zeppelin Post: Post card fr. with 1Fr 1931 Zeppelin Liechtenstein stamp (Mi.114) canc. "VADUZ\*10.VI.31", arr. "LAUSANNE\*10.VI.31". Cachet VADUZ JUNI 1931/ZEPPELIN POST nach LAUSANNE". PC 100 €

4082 Zeppelin post: Cover fr. with 100/27m Egyptian airmail canc. "CAIRE/GRAF ZEPPELIN\*11.AP.31", via "FRIEDRICHSHAFEN\*13.4.31" to London. C 40 €

4083 1931 Island Zeppelin Flight: registered cover fr. with 30a+2kr 1931 Zeppelin ovpt Island stamps (Mi. 147+149) canc. "REYKJAVIK\*30.VI.31", via "FRIEDRICHSHAFEN", arr. "LEIPZIG". cachet "LUFTSHIFF GRAF ZEPPELIN/ISLANDFAHRT 1931". C 120 €

4084 1931 Island Zeppelin Flight: Card fr. with 1M D.Reich stamp (Mi. 455) canc. "LUFTSCHIFF GRAF ZEPPELIN\*1.7.1931" and "REYKJAVIK\*1.VII.31" to Friedrichshafen. PC 90 €

4085 Zeppelin Post: 8pf D.Reich stationary card with add. frankinf cen. "FRIEDRICHSHAFEN\*5.7.31" to Teplice C.S.R.. Cachet LUFTSHIFF GRAF ZEPPELIN OBERSCHLESIEENFAHRT 1931". PC 50 €

4086 1929 1st Round the World Zeppelin Flight: Card fr. with 3+2x15+20c canc. "NEW YORK\*6.AUG.1929", via "FRIEDRICHSHAFEN\*10.8.29" to Konstanz. PC 40 €



4087



4088



4089



4090

- |      |  |    |       |
|------|--|----|-------|
| 4087 | 1931 Zeppelin Pollar Flight: Registered card fr. with 30kop+1R USSR airmails imperforate (Mi 402B+404B) canc. "BRISE-GLACE MALYGUIN ARCTIQUE*18.VII.31", arr. "FRIEDRICHSHAFEN*31.VII.31". Cachet "Mit Eisbrecher Malygin und Luftschiff Gr Zeppelin/ARCHANGELSK-NORDPOL-FRIEDRICHSHAFEN".             | PC | 150 € |
| 4088 | 1931 Zeppelin Pollar Flight: Registered card fr. with 30kop+1R USSR airmails imperforate (Mi 402B+404B) canc. "BRISE-GLACE MALYGUIN ARCTIQUE*18.VII.31", via "FRIEDRICHSHAFEN*31.7.31", arr. "BERLIN". Cachet "Mit Eisbrecher Malygin und Luftschiff Gr Zeppelin/ARCHANGELSK-NORDPOL-FRIEDRICHSHAFEN". | PC | 150 € |
| 4089 | Airmail cover fr. with 2M 1931 Zeppelin stamp (Polar flight) canc. "FRIEDRICHSHAFEN*24.7.31", arr. "LENINGRAD*25.VII.31". Airmail cachet "LUFTSCHIFF GRAF ZEPPELIN/POLARFAHRT 1931". (Mi. 457).  | C  | 75 €  |
| 4090 | D.Reich: Airmail cover fr. with 4M 1931 Zeppelin (Polar flight) canc. "FRIEDRICHSHAFEN*24.7.31. (Mi. 458).   | C  | 200 € |
| 4091 | D.Reich: Airmail cover fr. with 4M 1931 Zeppelin (Polar flight) canc. "LUFTSCHIFF GRAFZEPPELIN*25.7.1931" to Braunschweig. (Mi. 458).  | C  | 200 € |
| 4092 | D.Reich: Airmail cover fr. with 4M 1931 Zeppelin (Polar flight) canc. "LUFTSCHIFF GRAFZEPPELIN*26.7.1931" to USA. (Mi. 458).   | C  | 200 € |
| 4093 | D.Reich: Airmail cover fr. with 4M 1931 Zeppelin (Polar flight) canc. "BERLIN*25.7.31" to USA. (Mi. 458).  | C  | 200 € |
| 4094 | 1931 Zeppelin Pollar Flight: Registered cover fr. with 35kop+2R USSR airmails imperforate (Mi 403B+405B) canc. "PAR AVION ZEPPELIN LENINGRAD*25.VII.31" and "BRISE-GLACE MALYGUIN ARCTIQUE*27.VII.31". Cachet "Mit Eisbrecher Malygin und Luftschiff Gr Zeppelin/ARCHANGELSK-NORDPOL-FRIEDRICHSHAFEN". | C  | 150 € |
| 4095 | Airmail cover fr. with 4M 1931 Zeppelin (Polar flight) canc. "GRAFZEPPELIN*27.7.1931", via "ARCTIQUE*27.VII.31", arr. "MOCHBA*26.8.31". Airmail cachet "LUFTSCHIFF GRAF ZEPPELIN POLARFAHRT". (Mi. 458-900E as stamp).   | C  | 250 € |
| 4096 | D.Reich: Airmail cover fr. with 2M 1931 Zeppelin (Polar flight) canc. "LUFTSCHIFF GRAFZEPPELIN*31.7.1931", arr. "FRIEDRICHSHAFEN*31.7.31. (Mi. 457).   | C  | 60 €  |
| 4097 | 2nd South America Zeppelin flight: Post card fr. with 2M 1928 Zeppelin D.Reich (Mi.423) canc. "FRIEDRICHSHAFEN*18.9.31", arr. "PERNAM.*21.IX.31", linear "refuse-retour", fr. with Brazilian stamps canc. "PERNAM.*24.IX.31", arr. "FRIEDRICHSHAFEN*28.9.31".  | PC | 80 €  |
| 4098 | 1932 3rd Zeppelin South America Flight: Post card fr. with 25c + 3L + 5L Italian stamps (Sas. 317+PA28+PA29) canc. "MILANO*15.4.32", via "FRIEDRICHSHAFEN*18.4.32", arr. "PERNAMBUOCO*20.IV.32". (Longhi 95).  | PC | 350 € |





4091



4092



4093



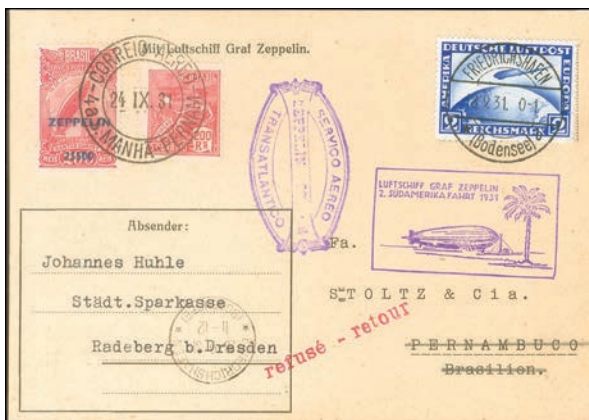
4094



4095



4096



4097



4098



4099



4100



4101



4102



4105



4103



4104

- 4099 1932 4th Zeppelin South America Flight: Post card fr. with 1.50L+5L+1.20L+50c+60c+80c+1L Tripolitania airmail stamps (Sas. PA14+15+16+9+10+12+13) canc. "TRIPOLI\*30.4.32", via "FRIEDRICHSHAFEN\*2.5.32", arr. "PERNAMBUCO\*5.V.32". (Longhi 107). PC 320 €
- 4100 Registered cover canc. "BERLIN\*2.5.32", arr. "AΘHNAI\*3.V.32". Cover received wrongly cachet "DEUTSCHE LUFTPOST/4 Sudamerikafahrt 1932...". (Hellas FF239B). FFC 400 €
- 4101 1932 U.S.S. AKRON COAST TO COAST TRIP CARRYING MAIL: Cover canc. "LAKEHURST\*6.MAY.1932", arr. "SAN FRANCISCO\*12.MAY.1932". C 15 €



4106



4109



4107



4110



4108

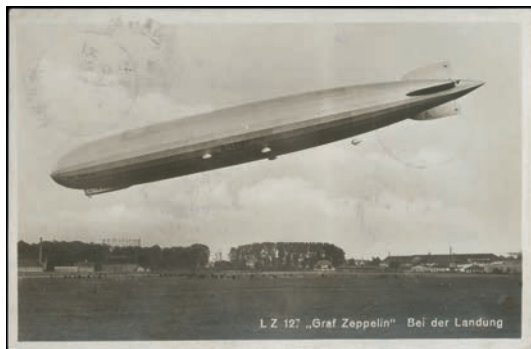
- 4102 Zeppelin Post: Paraguay stationary card canc. "PARAGUAY\*28.APR.32", via "FRIEDRICHSHAFEN\*10.5.32", arr. "LORCH\*11.5.32". Cachet "SERVICO AEREO TRANSATLANTICO". Handwritten "Asuncion via Pernambuco a Friedrichshafen". PS 65 €
- 4103 1932 Danzig Round Zeppelin Flight: Card fr. with LUPOSTA 1932 complete set of 5 values (Mi.231/235) canc. "DANZIG/Flughafen\*30.7.32", arr. "DANZIG 5\*31.7.32". Boxed in green "LUPOSTA-DANZIG 1932/ LUFTSCHIFF-GRAG ZEPPELIN/RUNDFAHRT AB DANZIG". PC 300 €
- 4104 1932 7th Zeppelin South America Flight: Post card fr. with 2X5L Rodi airmail stamps (Sas. PA11/Hellas A11) canc. "RODI (EGEO)\*14.9.32", via "FRIEDRICHSHAFEN\*26.9.32", arr. "PERNAMBUCO\*29.IX.32". (Longhi 145). PC 320 €
- 4105 9th South America Zeppelin Flight: Zeppelin post card fr. with 40pg+1m D.Reich (Mi. 455) stamps canc. "FRIEDRICHSHAFEN\*3.11.32" to Torino. Cachet "1932 9 SUDAMERIKAFAHRT...". PPC 50 €
- 4106 1933 1st South America Zeppelin Flight: Card fr. 3+12+20+40pf Deutsches Reich stamps canc. "FRIEDRICHSHAFEN\*6.5.33", over Barcelona to teplice Czechoslovakia. Cachet "1.SUDAMERIKANFAHRT 1933-LUFTSCHIFF GRAG ZEPPELIN 1933". PC 100 €
- 4107 Zeppelin Post: Registered airmail cover fr. with 20c+2.55L+5L Italian stamps canc. "ROMA POSTA AEREA ZEPPELIN\*20.5.33", via "FRIEDRICHSHAFEN\*30.5.33", arr. "FRANKFURT (MAIN)\*31.5.33". On reverse cachet "CROCIERA ZEPPELIN/1933-XI". C 80 €
- 4108 1933 Zeppelin Round Flight over Rome: Post card fr. with 20c+50c+3L Italian stamps (Sas 328+PA42+45) canc. "ROMA\*28.V.33", post mark on reverse "ROMA\*29.V.33". (Longhi 410). PPC 180 €
- 4109 1933 Zeppelin Return Rome Flight: Post card fr. with 60c+15c Libia + 3L Tripolitania (Sas. PA22) stamps canc. "TRIPOLI\*25.5.33", via "ROMA\*29.V.33" and "FRIEDRICHSHAFEN\*30.5.33" to Braunschweig. Signed Longhi. (Longhi 682). PC 215 €
- 4110 Zeppelin Post: Registered airmail cover fr. with 2x10x+1.75L+10L Italian stamps canc. "ROMA POSTA AEREA ZEPPELIN\*25.5.33", arr. "FRIEDRICHSHAFEN\*?.5.33". C 100 €



4111



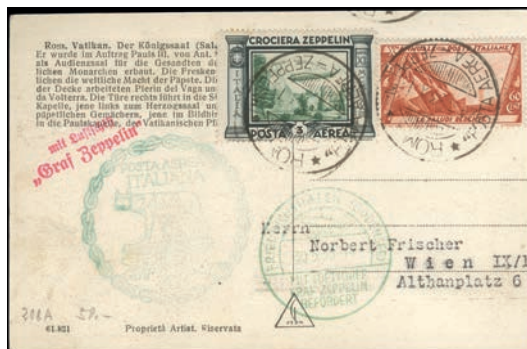
4113



4112



4114



4115

- |      |  |     |       |
|------|--|-----|-------|
| 4111 | 1933 Zeppelin Return Rome Flight: Post card fr. with 75c Libia + 10L Tripolitania (Sas. PA24) stamps canc. "TRIPOLI*25.5.33", via "ROMA*29.V.33", arr. "PERNAM.*6.VI.33". Signed Diena + Bolaffi. (Longhi 697).    | PC  | 400 € |
| 4112 | 1933 Rome Zeppelin Flight: Post card (Zeppelin illustration) fr. with 15+90c Swiss airmail stamps (Mi.256+258) canc. "ROMANSHORN*28.V.33", post mark "FRIEDRICHSHAFFEN*29.5.33". (Longhi 228).                     | PPC | 180 € |
| 4113 | 1933 Rome Zeppelin Flight: Swiss stationery postal card fr. with 90c airmail stamp (Mi.258) canc. "ROMANSHORN*28.V.33", post mark "FRIEDRICHSHAFFEN*29.5.33" to Napoli. (Longhi 254).                              | PS  | 120 € |
| 4114 | 1933 Zeppelin Return Rome Flight: Post card fr. with 30c+3L Italian stamps (Sas 330+PA45) canc. "ROMA*29.V.33", post mark on reverse "ROMA*29.V.33". Also canc. "NAPOLI*30.5.33" (non philatelic). (Longhi 452).   | PS  | 300 € |
| 4115 | 1933 Zeppelin Return Rome Flight: Post card fr. with 60c+3L Italian stamps (Sas 333+PA45) canc. "ROMA*29.V.33", post mark on reverse "ROMA*29.V.33". Also canc. "FRIEDRICHSHAFFEN*30.5.33" to Wien. (Longhi 470).  | PPC | 100 € |
| 4116 | 1933 Zeppelin Return Rome Flight: Cover fr. with 1.25L+3L/80c San Marino stamps (Mi 189+193) canc. illegible, post mark on reverse "ROMA*29.V.33". Also canc. "FRIEDRICHSHAFFEN*30.5.33" to Hamburg. (Longhi 611). | C   | 190 € |
| 4117 | Zeppelin Post: Registered airmail post card fr. with 15c+60c+3L Italian stamps canc. "ROMA POSTA AEREA ZEPPELIN*29.5.33", arr. (reverse) "ROMA*29.V.33/CROCIERA ZEPPELIN" (weak).                                  | PPC | 75 €  |
| 4118 | 1933 Rome Zeppelin Flight: German stationery card fr. add. with 25+4x5+4x3+12pf canc. "LUFTSCHIFF GRAF ZEPPELIN*29.5.33" to Munchenbernsdorf. Cachet "LUFTSCHIFF GRAF ZEPPELIN/ROMFAHRT-1933".                     | PS  | 100 € |
| 4119 | 1933 Rome Zeppelin Flight: Post card fr. with 15+20+40pfg Deutsches Reich stamps (Mi.470+472+521) canc. "LUFTSCHIFF GRAF ZEPPELIN*29.5.33", on reverse post mark "ROMA*29.V.33". (Longhi 217).                     | PC  | 100 € |



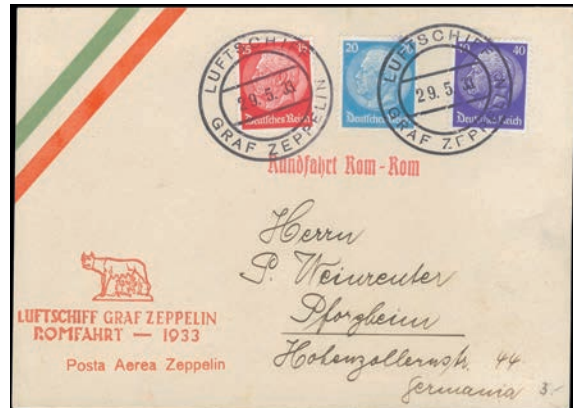
4116



4117



4118



4119



4120



4121



4122



4123

- 4120 1933 ROMA DIRIGIBILE Zeppelin Flight: Post card fr. with 30c+3L Italian stamps canc. "ROMA POSTA AEREA ZEPPELIN\*2.5.33", arr. "CAMPORE DI VALLE MOSSO\*VERCELLI\*31.5.33". Rare. PC 200 €
- 4121 Cover fr. with Brazilian stamps canc. "22.AGO.1934", via "FRIEDRICHSHAFEN\*28.8.34", "BERLIN" and "BRINDISI" to Corfu. (Hellas FF342A6). FFC 140 €
- 4122 Zeppelin Post: Card fr. with 50c US airmail canc. "AKRON\*28.OCT.19388", via "FRIEDRICHSHAFFEN\*2.11.33" to Dresden. Cachet "MIT LUFTPOST BEFORDERT/LUFTPOSTAMT/ FLUGHAFEN HALE LEIPZIG". PC 75 €
- 4123 1933 9th Zeppelin South America Flight: Registered post card fr. with 5+30+35+50c+2.55L+5L Somalia stamps (Sas. 167+172+173+175+180+181) canc. "MOGADISCIO\*27.9.33" to Pernambuco. Only 55 cards. (Longhi 852). PC 560 €



4124



4125



4126



4128



4127



4129



4130

- 4124 Zeppelin Post: Cover canc. "PARAGUAY\*26.5.34" via "FRIEDRICHSHAFFEN/MIT LUFTSCHIFF GRAF ZEPPELIN BEFORDERT\*5.6.34", arr. "BREMEN\*5.6.34". C 50 €
- 4125 Zeppelin Post: Registered cover canc. "PARAGUAY\*26.5.34" via "FRIEDRICHSHAFFEN/MIT LUFTSCHIFF GRAF ZEPPELIN BEFORDERT\*5.6.34", arr. "SOLINGEN\*6.6.34". C 50 €
- 4126 Cover fr. with Brazilian stamps posted from Sao Paulo canc. "29.V.34", via "FRIEDRICHSHAFEN\*5.6.34", arr. "AÖHNAI\*7.VI.34". (Hellas FF342A1). FFC 160 €
- 4127 Zeppelin Post: Stationary Paraguayan postal card mailed registered canc. "PARAGUAY\*23.6.34" via "FRIEDRICHSHAFFEN/MIT LUFTSCHIFF GRAF ZEPPELIN BEFORDERT\*6.7.34", arr. "LORTH\*7.7.34". PS 50 €



4132



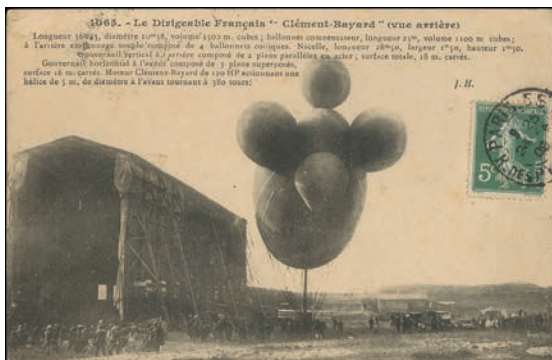
4134



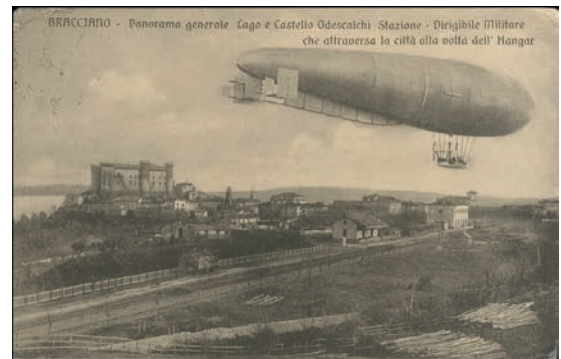
4131



4135

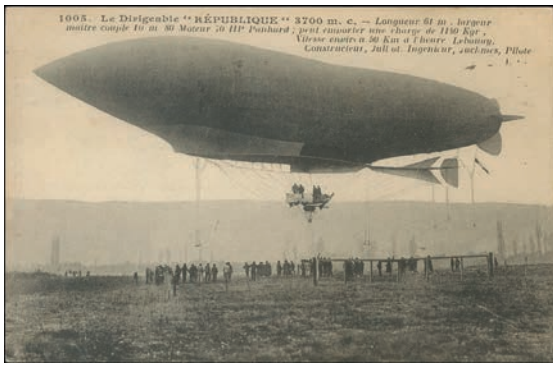


4133



4136

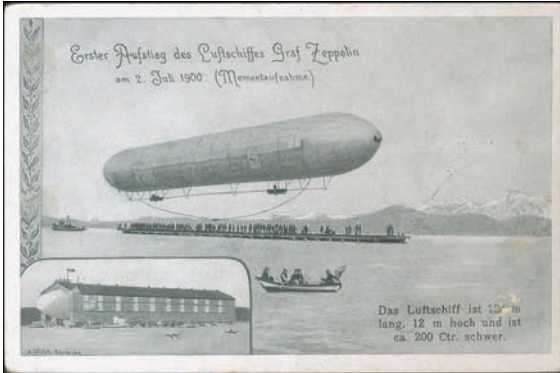
- 4128 10th SudAmerica Zeppelin Flight: Cover fr. with Deutsches Reich stamps (Mi. 527+540/553) canc. "LUFTSCHIFF GRAF ZEPPELIN\*13.10.34", arr. "RECIFE\*16.X.34". C 120 €
- 4129 Zeppelin post: registered airmail cover fr. with 1936 Liechtenstein Zeppelin set (Mi. 149/150) canc. "TRIESENBERG\*1.V.36", arr. "NEW YORK\*9.5.1936". cachet "DEUTSCHE LUFTPOST EUROPA-NOR-DAMERIKA". C 130 €
- 4130 Zeppelin post: Airmail cover fr. with 1Fr 1936 Liechtenstein Zeppelin and 2x50r 1934 airmail (Mi. 147+149) canc. "VADUZ\*4.V.36", via "NEW YORK\*9.MAY.1936" to Cleveland. Handwritten "Mit Hindenburg LZ129 nach Nordamerika ab frankfurt a/Main 6 Mai. C 160 €
- 4131 Airmail cover canc. "OCLAHOMA\*11.JUL.1936", via "NEW YORK" and "FRANKFURT" to Athens. Handwritten "Per HINDENBURG from lakehurst, N.J. to Frankfurt". FFC 160 €
- 4132 Commemor. cachet "FRANKFURT (MAIN)/8.7.38/100 Geburtstag des Grafen v. Zeppelin" on post card with D.Reich Zeppelins centenary set (Mi. 669/670). PC 15 €
- 4133 Le Dirigeable Francais Clement Bayard b&w PPC canc. "PARIS\*23.4.09". VF. PPC 15 €
- 4134 Le SPIESS 1er Dirigeable rigide Francais b&w PPC mailed, VF. One reverse very nice ciderella stamp "REPUBLIQUE FRANCAISE CORRESPONDANCE PAR AVION". PPC 15 €
- 4135 Zerstorung des Marine-Luftschiffes L.II/17.Oktober 1913 b&w PPC, mailed (late use) from Basel to Munich. PPC 12 €
- 4136 "Dirigibile Militare che attraversa la citta alla volta dell'Hangar" b&w PPC, canc. "PRACCIANO\*16.8.10". VF. PPC 15 €



4137



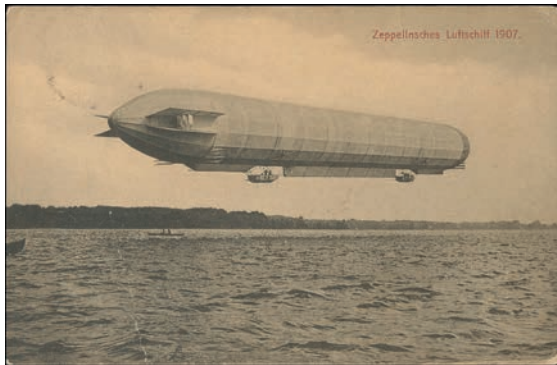
4139



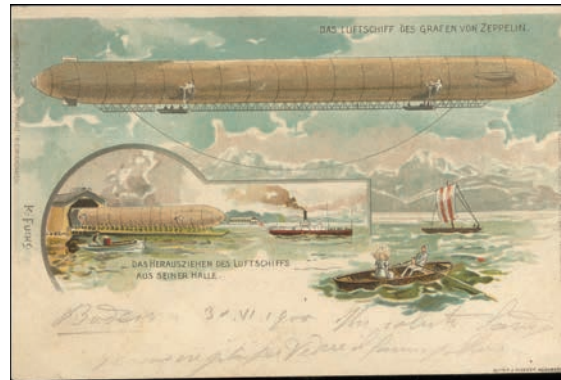
4138



4141



4140



4143



4142

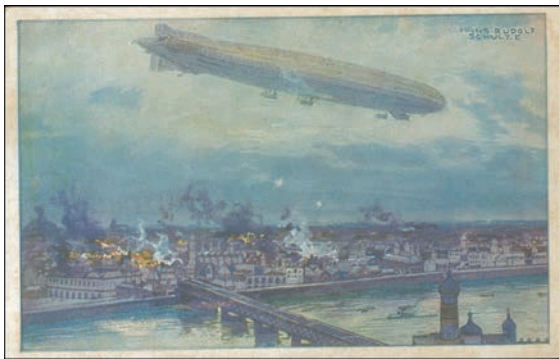


4144

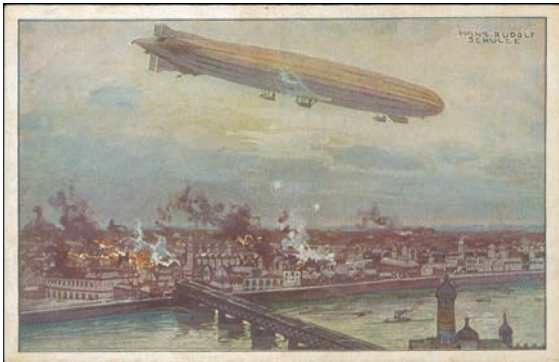


4147





4145



4146



4148



4149

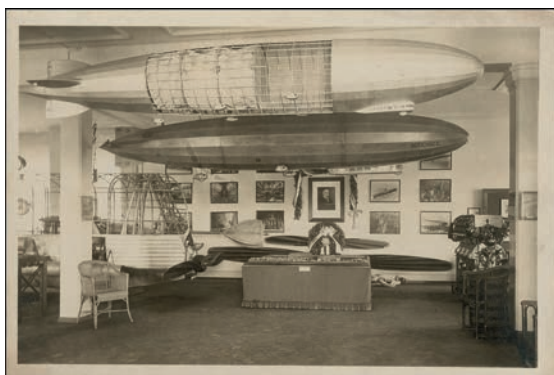


4150

4137	Le Dirigeable Republique 3700 m.c. b&w PPC canc. "PARIS*15.AVRI.18", arr. BIELLA*17.4.18". VF.	PPC	15 €
4138	Ester Aufstieg des Luftschiffes Graf Zeppelin am 2 Juli 1900 (Momentaufnahme), b&w PPC, on reverse cachet ROMANSHORN FRIEDRICHSHAFEN DEUTSCHE SCHIFFSPOST/K.170/28.7.38".	PPC	17 €
4139	The end of the Baby-Killer British coloured PPC, unused. VF.	PPC	15 €
4140	Zeppelinsches Luftschiff 1907 b&w PPC fr. with 5h Austrian stamp canc. "WIEN*10.XI.07" to Sarajevo. VF.	PPC	15 €
4141	Gordon-Bennet-Wettfliegen/Zurich 1909 b&w photocard mailed from "ZURICH*19.XII.09", arr. "REGGIO EMILIA*20.12.09".	PPC	15 €
4142	Hotel Beau-Rivage Luzern coloured PPC, fr. with 10c Swiss stamp canc. "LUZERN*29.V.1928" to Torino. VF.	PPC	12 €
4143	Das Luftschiff des Grafen von Zeppelin early coloured PPC, fr. with 10c Swiss stamp canc. "ROMANSHORN-FRIEDRICHSHAFEN*1.VII.00", arr. "GENOVA*2.7.00".	PPC	17 €
4144	Zeppelin in voller Fahrt uber Wiesbaden b&w PPC, unused. VF.	PPC	15 €
4145	Luftschiff Schutte-Lanz bombardierend coloured PPC, unused. VF.	PPC	10 €
4146	Luftschiff Schutte-Lanz bombardierend coloured PPC, fr. with 5pf D.Reich stamp canc. "HANNOVER*3.7.15". VF.	PPC	12 €
4147	Militarlufttrenger Santa im Rampf mit feindlichen fliegern coloured PPC, fr. with 5pf D.Reich stamp canc. "...*19.7.15". VF.	PPC	12 €
4148	Feffelballon unfere artilleriemirtung beobachtend coloured PPC, fr. with 10pf D.Reich stamp canc. "FARMBECK*18.12.16". VF.	PPC	12 €
4149	Reichsmarineluftschiff coloured PPC, written "29.4.16", used. VF.	PPC	12 €
4150	Zeppelin uber Antwerpen coloured PPC fr. with 7 1/2pf D.Reich stamp canc. "LEIPZIG*2.4.17". Torn at right.	PPC	12 €



4156



4151



4154



4152



4155



4153

- |      |   |     |      |
|------|---|-----|------|
| 4151 | Zeppelin Museum Friedrichshafen b&w PPC, unused. VF.  | PPC | 15 € |
| 4152 | Zeppelin uber Wien b&w PPC (stamp removed) canc. "WIEN*10.VIII.31" to Milano.   | PPC | 15 € |
| 4153 | Friedrichshafen b&w PPC fr. with 6pf D.Reich stamp canc. "FRIEDRICHSHAFEN*29.8.35". VF.   | PPC | 15 € |
| 4154 | Per la Difesa della Patria! colored Italian propaganda PPC, Zeppelin over soldiers mailed 1917 (stamp damaged).   | PPC | 10 € |
| 4155 | 1928 Umberto Nobile Polar Expedition: cinderella stamps in all 4 colours, produced privately by E.Cano in Naples 1927, in bl.4, mng. VF.  | (*) | 80 € |
| 4156 | Graf Zeppelin uber dem Hafenbahnhof Friedrichshafen b&w PPC fr. with 6pf D.Reich stamp canc. "FRIEDRICHSHAFEN*23.7.35". Commemorative cachet in red "ZUR ERINNERUNG AN DEN BESUCH/ ZEPPELIN LUFTSCHIFFWERET". VF. | PPC | 18 € |



4158



4161



4157



4160



4159



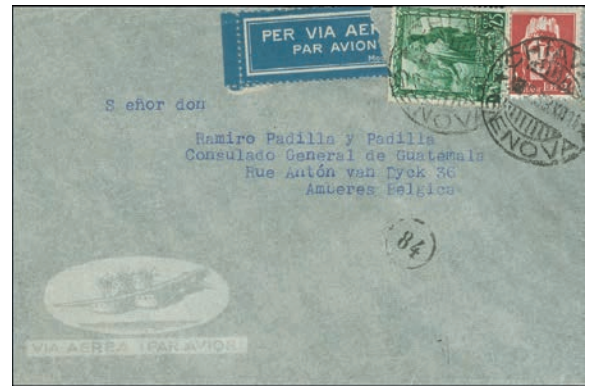
4162

**ITALY**

- 4157 Cover fr. with 25c (1908), 10c (1906) and 3x15c (1917-20) VEIII stamps canc. "FIRENZE\*25.7.22" to London". C 15 €  
(Sas. 82+83+108).
- 4158 Airmail Cover fr. 1.25L 1926 floreale and 1.20 1926-28 airmail stamp canc. "BRINDISI POSTE AEREA\*23.11.28", arr. "STAMBOUL\*24.II.28". (Sas. 202+A5).
- 4159 Airmail cover fr. with 2x50c 1929 Imperiale plus 2L 1934 Airmail Express stamp to Tripoli (Libia). Cachet "COMMISSIONE PROV. DI CENSURA ROMA 35" and tape "Verificato per Censura". (Sas. 261+A73).
- 4160 Express cover fr. with 1.25L regular + 2.50L Express 1932 March to Rome 10th anniv. stamps canc. "BARI\*16.4.34"4", via "AMB.PESCARA-MILANO\*16.APR.34", arr. "CHEMNITZ\*18.4.34". (Sas. 336+E18).
- 4161 Airmail cover fr. with 1L 1934 Roma - Mogadishu Flight airmail stamp canc. "ROMA\*POSTA AEREA SPECIALE\*9.11.34", arr. "TOBRUK\*POSTA AEREA SPECIALE\*10.11.34" and finally arr. "TORINO\*2. XII.34". Also flights special cachet. (Sas. A38).
- 4162 Airmail cover fr. with 1.75L+50c 1929 Imperiale and 2x75c 1930-32 airmails canc. FIRENZE\*11.3.35", via "BRINDISI POSTA AEREA\*15.3.35" and "SUDAN AIR MAIL JUBA\*19.III.35", arr. "ABA\*20.3.35" (Kongo Belge). (Sas. 254+A12+251).



4163



4164



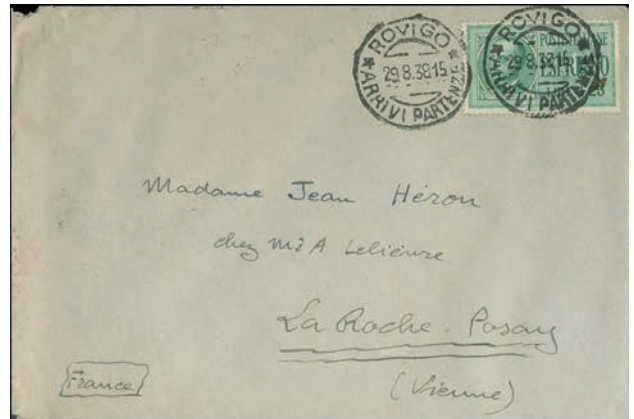
4167



4165



4168



4166



4169



4170



4171



4172



4173



4174

- |      |  |   |       |
|------|--|---|-------|
| 4163 | Cover fr. with 2x5c+15c 1929 Imperiale, 20c 1935 Littoriali della Cultura e dell'Arte, 30c 1o Salone aeronautico internazionale, 30c Bellini and 20c 17th Milano Exhibition canc. "PALAZZOLO SULLOGGIO BRESCIA*9.9.36" to Switzerland. (Sas. 243+246+377+385+389+394). | C | 100 € |
| 4164 | Airmail cover fr. with 2L 1929 Imperiale plus 25c 1938 Proclamazione dell'Impero canc. "CHIAV GENOVA*?.2.38" to Belgium. (Sas. 255+441).   | C | 25 €  |
| 4165 | Airmail cover fr. with 75c+5L 1929 Imperiale plus 2L 1930-32 airmail stamp canc. "ROMA CENTRO POSTA AEREA*14.4.38", via "HONG KONG*22.AP.38", arr. "SHANGHAI*26.4.38". (Sas. 252+257+A15).   | C | 40 €  |
| 4166 | Cover fr. with 1.25L 1932-33 Express stamp canc. "ROVIGO*29.8.38", arr. "LA ROCHE POSAY*?.8.39". (Sas. E15).   | C | 15 €  |
| 4167 | Airmail cover fr. with 75c 1929 Imperiale plus 2L 1930-32 airmail and 2L 1934 Airmail Express stamps canc. "GENOVA FERROVIA*20.4.39" to Melbourne. (Sas. 252+A15+A73).   | C | 30 €  |
| 4168 | Airmail cover fr. with 2x75c 1929 Imperiale plus 3x1L 1930-32 airmail stamp canc. "GENOVA*7.7.39" to Sydney. (Sas. 252+A14).   | C | 20 €  |
| 4169 | Airmail cover fr. with 2L 1929 Imperiale plus 2L 1930-32 airmail stamp canc. "MILANO POSTA AEREA*9.7.40" to USA (Washington D.C "House of Representative"). On flap ".....American Consul, Athens, Greece". (Sas. 255+A15).  | C | 40 €  |
| 4170 | Airmail cover fr. with 1L 1930-32 airmail, 1.25L 1929 Imperiale and 75c 1941 Fratellanza darmi italo-tedesca canc. "POSTA ESTERA ROMA*2.2.42", arr. "U.C.P.E.-I*3.FEB.42". On arrival German censor tape and cachet. (Sas. A15+253+456).                               | C | 50 €  |
| 4171 | Registered cover fr. with 5L 1945-48 Democratica and 30L 1945-52 Espresso canc. "MILANO*14.8.46", arr. "NIJMEGEN*17.VIII". (Sas. 555+E29).   | C | 30 €  |
| 4172 | Cover fr. with 10L+2L+50L 1945-48 Democratica and 15L 1946 Repubblica canc. "ALESSANDRIA*1.2.47" to USA. (Sas. 558+552+564+572).   | C | 60 €  |
| 4173 | Registered cover fr. with 1L+3L 1946 Repubblica, 25L 1945-48 Democratica regular and 1L+5L airmails canc. "MILANO", via "CAIRO" and "ADEN*19.MAR.47" to Hodeidah Yemen. (Sas. 562+566+568+A126+A129).  | C | 120 € |
| 4174 | Cover fr. with 3x15L +1L 1945-48 "Democratica" canc. "ROMA-FERROVIA*29.3.47" to USA. (Sas 550+560).  | C | 30 €  |



4175



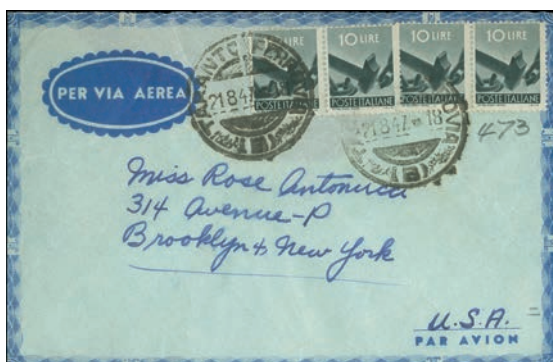
4176



4177



4179



4178



4180

- |      |   |   |       |
|------|---|---|-------|
| 4175 | Cover fr. with 10L+2x2L 1946 Repubblica and 25c 1945-48 Democratica in bl.4 canc. "BERGAMO*13.6.47 to Kampala, Uganda. (Sas. 545+567+571).  | C | 300 € |
| 4176 | Cover fr. with 2X5L+1L+4L Italian stamps ovpt "A.M.G.V.G." canc. "TRIESTE*8.6.47" to Stockholm. (Sas. 8+10+17).   | C | 40 €  |
| 4177 | Airmail cover mailed from Milano and fr. with 25L+50L 1945-48 Democratica airmails, arr. "SUDAN KHARTUM*30.VII.47" (Sas. A131+A132).  | C | 130 € |
| 4178 | Cover fr. with 4x10L 1945-48 Democratica canc. "TARANTO*21.8.47" to USA. Flap is missing. (Sas. 558).   | C | 50 €  |
| 4179 | Airmail cover fr. with 100L+10L 1945-48 Democratica canc. "MONZA (POSTA AEREA)*24.9.47" to England. Cover repaired. (Sas. 558+565).   | C | 150 € |
| 4180 | EAGLE HOBBY CLUB Pamphlet fr. with 2x1L+2x2L 1945-46 Democratica airmails canc. "MILANO*22.7.48" to Germany (French Zone). (Sas. A126+A127).  | C | 50 €  |
| 4181 | Airmail cover fr. with 3x30L 1948 New Constitutions Proclamation, 2x50L+4x25L 1947-55 change of colours airmails and 2x10L 1945-48 "Democratica" canc. "MILANO POSTA AEREA*12.5.48", arr. "MONROVIA LIBERIA*21.MY.48". Rare destination. (Sas 559+578+A133+A134). | C | 350 € |
| 4182 | Airmail cover fr. with 2x20L 1945-48 "Democratica" and 100L 1948 S.Caterina canc. "GENOVA POSTA AEREA*10.8.48" to USA. (Sas. 561+A146).   | C | 400 € |
| 4183 | Airmail cover fr. with 100L 1948 Risorgimento stamp canc. "ROMA CENTRO*27.8.48" to New York. (Sas. 591).  | C | 280 € |



4183



4181



4184



4182



4186



4187



4185

- 4184 Registered cover fr. with 100L 1948 Risorgimento stamp canc. "BIELA\*30.9.48", via Milano and New York, arr. "GARY IND.\*21.OCT.1948". (Sas. 591). C 220 €
- 4185 Airmail cover fr. with 30L 1945-48 "Democratica" and 200L 1948 S.Caterina canc. "MILANO POSTA AEREA\*20.10.48" to Singapore. (Sas. 563+A147). C 500 €
- 4186 Airmail cover fr. with 3x50L 1947-55 Change of colours airmails canc. "CASALVELINO\*21.12.48" to USA. (Sas. A134). C 30 €
- 4187 Airmail cover fr. with 1L +25L 1945-48 "Democratica" (airmail+regular) plus 15L Donizetti stamp ovpt "A.M.G.F.T.T." canc. "COMO POSTA AEREA\*26.3.49" to Gemrany, French Zone. (Sas 562+A126+34). C 40 €



4188



4189



4190



4191



4192



4193



4194



4195

- 4188 Airmail cover fr. with 5L in bl.4 and 2x25L 1945-48 Democratica plus 25L 1947-55 change of colours airmail can. "ROMA POSTA AEREA\*20.4.49" to Canada. (Sas. 555+562+A133). C 30 €
- 4189 Registered cover fr. with 2x15L+50L 1949 Biennale d'arte di Venezia plus 20L 1949 Milano Exhibition can. "COMO\*28.5.49", arr. "COLOMBO\*24.JL.49" (Ceylon). (Sas. 595+597+598). C 100 €





4196



4197



4199

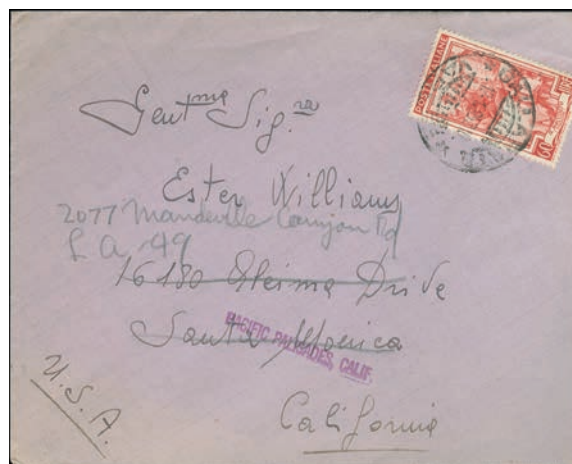


4198

- 4190 Airmail cover fr. with 100L 1948 risorgimento and 5L S.Caterina canc. "GENOVA POSTA AEREA\*25.6.49" to Mexico. (Sas. 575+591). C 300 €
- 4191 Cover fr. with 4x20L+3x5L 1945-48 Democratica canc. "SICILIA....\*2.SET.49" to USA. (Sas. 555+561). C 30 €
- 4192 Airmail cover fr. with 100L 1948 Roman Republic centenary and 2x15L 1949 ERP canc. "ROMA\*1.7.49" to Hyderabad-Deccan (India), arr. "HYDERABAD\*5.JLY.49". (Sas. 600+602). C 500 €
- 4193 Cover fr. with 2x50L UPU 75th anniv. canc. "ROMA FERROVIA\*28.X.1949" to USA. (Sas. 599). C 80 €
- 4194 Airmail cover fr. with 5L and 2x100L 1945-48 Democratica canc. "MILANO POSTA AEREA\*12.11.49" to Romania. (Sas. 560+565). C 200 €
- 4195 Airmail cover fr. with 2x20L and 2x100L 1945-48 Democratica canc. "MILANO POSTA AEREA\*7.12.49" to France. (Sas. 561+565). C 250 €
- 4196 Registered cover fr. with 100L 1945-48 Democratica canc. "VOBARNO\*17.12.49" via Brescia, Genova and New York, arr. "SAINT LOUIS\*12.JAN.1950". (Sas. 565). C 100 €
- 4197 Airmail cover fr. with 5L+50L+100L 1945-48 Democratica canc. "MILANO\*21.1.50", arr. "LIVRY GARGAN\*23.1.1950". Signature for opened the cover. (Sas. 555+564+565). C 180 €
- 4198 Cover fr. with 3x5L 1949 Biennale d'Arte di Venezia plus 3x20L+2x50L 150th anniv. of electricity canc. "ROMA CENTRO\*25.2.50" to USA. (Sas. 594+611/612). C 280 €
- 4199 Airmail cover fr. with 55L 1950 Holy Year and 30L 1945-48 Democratica canc. "ROMA POSTA AEREA\*4.7.50", arr. "PORT SAID\*6.JL.50". Egyptian censor tape and cachet. (Sas. 563+621). C 100 €



4200



4201



4203



4202



4204



4205

- |      |   |   |       |
|------|---|---|-------|
| 4200 | Cover fr. with 100L 1950 Italy on labour canc. "MILANO*31.III.1951" to Israel. (Sas. 651).  | C | 120 € |
| 4201 | Cover fr. with 60L 1950 Italy on labour canc. "GALLARATE VAREZE*12.1.1952", arr. "PACIFIC PALISADES*13.FEB.1952". (Sas. 649).                             | C | 30 €  |
| 4202 | Cover fr. with 2x100L+15L 1950 Italy on labour canc. "ROMA*4.3.1952" to Tokyo. (Sas. 651+641).  | C | 150 € |
| 4203 | Airmail cover fr. with 5L+35L+55L+65L 1950 Italy on labour canc. "TORINO*24.10.52", arr. "GEORGETOWN BRITISH GUIANA*30.OCT.1952". (Sas. 637+645+648+650). | C | 100 € |
| 4204 | 3.4.1953 ROMA-TOKYO First flight cover fr. with 200L 1950 Italy on labour canc. "CIAMPINO AEROPORTO*3.4.1953", arr. "TOKYO*5.4.53". (Sas. 652).           | C | 120 € |
| 4205 | Registered cover fr. with 15L+100L 1945-48 Democratica mailed from Bolzano at 189.10.50" to Germany. (Sas. 560+565).                                      | C | 100 € |





# PROMISE

Contemporary Mediterranean charm radiating the warmest welcome; a vibrant ambience with cosmopolitan appeal; a perfect attention to detail delivered with personal service; and that feeling of being very special.

FEEL SANI

SANI  
RESORT

KASSANDRA, GREECE | SANIRESORT.GR