

A. Karamitsos



Large Hermes Heads
Exceptional Stamps from
Great Collections

Public Auction 707

Divani Caravel Hotel, Athens

4 December 2022



A. Karamitsos

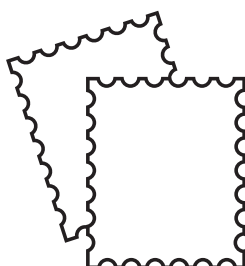
34 Tsimiski Str., 546 23 Thessaloniki, Greece

T: +30 2310 264 366 F: +30 2310 274 031

E: karamitsos@karamitsos.gr

www.karamitsos.com

Working hours: 07:00–15:00



Public & Live Internet

Auction № 707

Large Hermes Heads

Exceptional Stamps from Great Collections

4 December 2022

Start time 16:00

Divani Caravel Hotel, Athens

VIEWING ARRANGEMENTS

Athens Auctions Store

Monday, 7 November 2022 to Thursday, 1 December 2022

Working hours:

Monday to Friday 09:30–17:30 Saturday 09:30–15:00

Pindarou 7 & Alexandrou Soutsou 2, Athens

T: +30 210 3250173 / F: +30 210 3250176

Auction Nº 707	<h1>A. Karamitsos</h1> <p>34 Tsimiski Str., 546 23 Thessaloniki, Greece T: +30 2310 264 366 F: +30 2310 274 031 E: karamitsos@karamitsos.gr www.karamitsos.com</p>	
------------------------------	---	--

Έλαβα γνώση των όρων της δημοπρασίας και παρακαλώ να πλειοδοτήσετε για λογαριασμό μου τους παρακάτω λαχνούς, μέχρι το ποσό που έχω σημειώσει αντίστοιχα.
 Please bid on my behalf up to the limits, only if necessary, for the following lots. I have read and agree to the Conditions of Sale stated in the present Catalogue.

Name			
Address			
Client's code		Date	
Phone		Fax	
E-mail			
Please limit my total purchase to	€		
Please send my lots to my address	YES / NO	I will collect my lots from your store	YES / NO

Lot Nº	Limit (€)	Lot Nº	Limit (€)	Lot Nº	Limit (€)



Lot №	Limit (€)	Lot №	Limit (€)	Lot №	Limit (€)

Payment
<input type="checkbox"/> Credit Card (Visa <input type="checkbox"/> or Mastercard <input type="checkbox"/>) Online Payment Service (An account at karamitsos.com is needed to pay with your credit card using our secure gateway)
<input type="checkbox"/> Paypal at paypal@karamitsos.gr (Please note that an additional 4% on the total purchase amount must be paid, due to PayPal transaction fees etc.)
<input type="checkbox"/> Cash BANK : EUROBANK ERGASIAS, THESSALONIKI, GREECE, K.DIEL BRANCH "030" IBAN: GR27 0260 0300 0009 5020 1319 881 SWIFT CODE: ERBKGRAA Account holder: Dimitriadis Emmanouil

A.Karamitsos LIVE Auction Platform

How to bid in our LIVE Auctions

-- Postal Bids --

You can place a **postal** bid in our **LIVE** Auctions by phone, fax, email and of course via our website. Postal bids are accepted until 3 hours before **LIVE** Auction begins. **IMPORTANT:** If you don't have an account at karamitsos.com, when placing a postal bid in a **LIVE** Auction (via phone, fax, email) an account will be automatically created for you. In that case, if you want to place later any real time bids, please make sure to contact first info@karamitsos.gr so as to learn your login details.

-- Real Time Bids --

To start real time bidding, please visit our website at karamitsos.com the day and time of the Auction, **login** and enter our Auction by clicking on the auction's cover (1) or auction's title (2).

Active auctions

- 1** Public & LIVE Bid Auction 588
Coins, Medals & Banknotes
3-Jun-2017 11:00:00
[download auction catalog](#) | [view](#) →
- 2** Public Auction 587
General Stamp Sale
3-Jun-2017 14:00:00
[download auction catalog](#) | [view](#) →
- Public & LIVE Bid Auction 586
Large Hermes Head
3-Jun-2017 15:30:00
[download auction catalog](#) | [view](#) →

If the **LIVE** Auction hasn't started yet you will be automatically redirected to a "pending page" where you can see when the Auction will start (1). If you **want to participate you must log in** to our new **LIVE** Auction Platform (2). The **LIVE** Auction platform will automatically launch when time expires

A. Karamitsos
INTERNATIONAL AUCTIONS

LOG IN

1 PLEASE LOGIN TO PARTICIPATE
AUCTION WILL START SHORTLY

2

18:01:46:19
Days Hours Minutes Seconds

-- LIVE Auction Platform --

When the auction starts our **LIVE** Auction Platform will launch and you will be able to place some real time bids!

Live Auction 694 | Lot 06001

LOT 06001 STARTING PRICE €600

YOU ARE THE HIGHEST BIDDER

CURRENT BID € 900 BIDDER: 24

NEXT STEP € 950

Accepting Bids

PLACE BID

UNC

Similar to the gold 4 Ducat (1919) but in silver(!) with legend "ΕΛΕΥΘΕΡΙΟΣ ΒΕΝΙΖΕΛΟΣ" and bust of Venizelos facing left above branch. Crowned double-headed eagle and legend "ΜΙΚΡΑ ΑΣΙΑ ΘΡΑΚΗ ΚΥΠΡΟΣ ΔΩΔΕΚΑΝΗΣΑ.1919." on reverse. Engraved by Brulat. Diameter: 40mm. Weight: 14,1gr. Medal alignment. Plain edge. (KM Unlisted). Uncirculated.

- Lot 06001 sold to bidder 24 for €900
- Bidder 24 offered €900
- Bidder 23 offered €850
- Postal bid increased to €800
- Bidder 22 offered €750
- Postal bid increased to €700
- Bidder 21 offered €650

Above you can see our **LIVE** Auction Platform. You can see the number of the auction and the current lot (1). At the left section (2) you can see the photo of the lot, its number, its starting price and the description. At the right section, there is the message section (3) where you can see if you are winning the lot and any other system messages, the current highest bid and the its bidder (4), the countdown timer (5), the next step (6), the place bid button (7) and finally the log of the lot (8). When the lot will open there will be the indication "Accepting Bids...". When the lot is about to close, the countdown timer will start and when there is a new bid the timer will be updated. The timer turns red when the time is ready to expire. As long as you are winning the lot, the system will not allow you to bid your self! You can change the next step field at any price you want (no underbids allowed and the next step must be at least 5% higher than current bid). Finally, you can view the log of the auction for the current lot at the section below (8).

A. Karamitsos hopes that you will find our new Auction Platform easy to use so as to participate from the comfort of your home or office at our next postal auctions. Our new **LIVE** Auction Platform will be continuously upgraded and new features will be added. For further information regarding our new **LIVE** Auctions and its features please visit karamitsos.com or email us at info@karamitsos.gr

SYMBOLS AND ABBREVIATIONS / ΣΥΜΒΟΛΑ ΚΑΙ ΣΥΝΤΜΗΣΕΙΣ

F	See photo plate (b&w) / Βλέπε φωτογραφία (A/M)
FC	See color photo / Βλέπε έγχρωμη φωτογραφία
** , u/m.	Unmounted mint / Ασφράγιστο χωρίς σαρνιέρα
* , m.	Mounted mint / Ασφράγιστο με σαρνιέρα ή ίχνος σαρνιέρας
(*) , mng.	Mint without gum / Ασφράγιστο χωρίς γόμμα
o, u.	Used, cancelled / Σφραγισμένο
P	Forgery, fake / Πλαστό
pu	Postally used / Ταχυδρομημένο κανονικά
o. g.	Original gum / Γνήσια γόμμα
E	Essay of proof / Δοκίμιο
S	Specimen / Δείγμα
W	Wrapper / Περιτύλιγμα (ράπερ)
EL	Entire letter / Επιστολή αναδιπλούμενη (χωρίς φάκελο)
C, cov.	Cover, envelope / Φάκελος
Δ	On fragment, on piece / Επί τεμαχίου (χαρτιού ή φακέλου)
PS	Postal stationery (card, letter card, print. envelope) / Ταχυδρ. μονόφυλλο (δελτάριο, βραχεία επιστολή, έντυπος φάκελος)
PPC	Picture postcard / Εικονογραφημένη κάρτα
RP	Real photograph, photocard / Φωτοκάρτα, πραγματική φωτογραφία
M	Map / Χάρτης
Hellas	HELLAS Greek catalogue / Κατάλογος ΕΛΛΑΣ
Fr.	FRANGOUDIS Cyprus catalogue / Κατάλογος Κύπρου ΦΡΑΓΚΟΥΔΗ
Yv.	YVERT & TELLIER French catalogue / Κατάλογος IBEP
Mi.	MICHEL German catalogue / Κατάλογος ΜΙΧΕΛ
SG.	S. GIBBONS British catalogue / Κατάλογος ΓΚΙΜΠΟΝΣ
AG.PA.	AGAOGULLARI PAPUÇCIOGLU Turkish Postmarks catalogue / Κατάλογος Τουρκικών Σφραγίδων ΠΑΠΟΥΤΣΙΟΓΛΟΥ
EST.	Our estimation / Προσωπική μας εκτίμηση
R, RR	Rare, very rare, etc. / Σπάνιο, πολύ σπάνιο κλπ.
wmk.	Watermark / Υδατόσημο
MS	Miniature or souvenir sheet / Μπλόκ φεγιέ
var.	Variety / Ποικιλία
trans.	Transit cancellation / Διαβατική σφραγίδα
G	Good quality or condition / Ανεκτή ποιότητα ή κατάσταση
F	Fine quality or condition / Καλή ποιότητα ή κατάσταση
VF	Very fine quality or condition / Πολύ καλή ποιότητα ή κατάσταση
B	Library book / Βιβλίο
doc.	Document / Έγγραφο
NEWS	Newspaper / Εφημερίδα
ENGR	Engraving / Γραβούρα
MAG	Magazine / Περιοδικό
EPH	Ephemera / Εφήμερα
BOND	Bonds & Certificates / Μετοχές FFC
MF	Military Flight / Στρατιωτική Πτήση
CF	Crash Flight / Αεροπορικά Ατυχήματα

CER	Ceramic / Κεραμικό
LABEL	Label / Ετικέτα
PC	Postal Cards / Επιστολικά Δελτάρια
PL	Postal Letter Cards / Βραχείες Επιστολές
PE	Postal Envelopes / Φάκελοι
PW	Postal Wrappers / Ταινίες Εντύπων
PO	Postal Money Orders / Ταχυδρομικές Επιταγές
PP	Parcel Postal Cards / Δελτίο Αποστολής Δεμάτων
PA	Aerograms, Air Letters / Αερογράμματα
B/UNC	Brilliant Uncirculated / Λαμπρό Ακυκλοφόρητο
UNC	Uncirculated / Ακυκλοφόρητο
A/UNC	Almost Uncirculated / Σχεδόν Ακυκλοφόρητο
XF	Extra Fine / Εξαιρετική Κατάσταση
VF	Very Fine / Πολύ Ωραίο
F	Fine / Ωραίο
VG	Very Good / Πολύ Καλό
G	Good / Καλό
FDC	Fleur de Coin / Κατάσταση Νομισματοκοπείου
S	Specimen / Δείγμα
TR/S	Trial Strike / Δοκιμή Μήτρας
Pn	Pattern / Μοτίβο
PRF	Proof / Δοκίμιο
E	Essay / Προσχέδιο

Note: The grading guide we use in this catalogue for the certified coins and banknotes is not our personal estimation but the one established by the internationally approved companies in the field. The "Top grade" characterization is about coins that the moment when this catalogue goes for printing, they have the best grade (compared to other similar coins) given from the two grading companies (NGC & PCGS).

Σημείωση: Η κατάσταση που αναγράφεται στα πιστοποιημένα νομίσματα και χαρτονομίσματα, δεν αποτελεί προσωπική εκτίμηση, αλλά εκτίμηση της εταιρίας πιστοποιήσεων. Ο χαρακτηρισμός "Top grade" αφορά σε νομίσματα τα οποία, την ώρα που αυτός ο κατάλογος εκτυπώνεται, κατέχουν τον μεγαλύτερο βαθμό (σε σύγκριση με άλλα παρόμοια νομίσματα) από τις 2 εταιρίες πιστοποίησης (NGC & PCGS).

ΟΡΟΙ ΔΗΜΟΠΡΑΣΙΩΝ

Όλοι οι λαχνοί περιγράφονται προσεκτικά και πωλούνται ως γνήσιοι και αυθεντικοί εκτός αν περιγράφονται άλλως. Ο αγοραστής μπορεί να απορρίψει το λαχνό και να τον επιστρέψει εντός 7 ημερών (ημερομηνία σφραγίδας ταχυδρομείου) από την λήξη της δημοπρασίας, αν αποδείξει ότι δεν είναι γνήσιος ή ότι περιγράφηκε λανθασμένα. Οι λαχνοί πρέπει να επιστρέφονται όπως παραλήφθηκαν αρχικά, χωρίς καμμία διαφοροποίηση. Λαχνοί που εξετάστηκαν προηγουμένως από τους υποψηφίους αγοραστές δεν επιστρέφονται. Επίσης δεν επιστρέφονται λαχνοί που αγοράστηκαν στην Αίθουσα μετά την έξοδο των αγοραστών από αυτή. Οι αγοραστές δεν έχουν το δικαίωμα επιστροφής μικτών λαχνών, συλλογών, λαχνών που έχουν ελαττώματα σε μικτροαξίες, καθώς και φωτογραφημένων στον κατάλογο λαχνών, για ελαττώματα ορατά στη φωτογραφία (κεντράρισμα, περιθώρια, οδόντωση). Όταν η αξία του λαχνού είναι στη σφραγίδα και όχι στο γραμματόσημο, ο λαχνός δεν μπορεί να επιστραφεί για ελάττωμα του γραμματοσήμου.

Κάθε λαχνός περιέρχεται στον πλειοδότη, που προσφέρει την υψηλότερη τιμή. Σε περίπτωση ίσων ταχυδρομικών προσφορών, πλειοδότης θεωρείται αυτός που η προσφορά του έφθασε πρώτη στα Γραφεία μας. Τηλεφωνικές εντολές αγοράς γίνονται δεκτές από γνωστούς πελάτες, πρέπει όμως να επικυρωθούν γραπτώς.

Πριν από την έναρξη της πωλήσεως ή την ημέρα της δημοπρασίας (για γραπτές προσφορές), η Εταιρία έχει το δικαίωμα να αποσύρει λαχνούς, να διαχωρίσει λαχνούς σε δύο ή περισσότερα μέρη ή να συνενώσει δύο ή περισσότερους λαχνούς.

Μεγάλοι λαχνοί μπορεί να μην μεταφερθούν για viewing στην Αθήνα ή να μεταφερθούν κατ'επιλογή. Viewing λαχνών, που δεν μεταφέρονται στην Αθήνα, μπορεί να γίνει στα γραφεία στη Θεσσαλονίκη.

Προσφορές γίνονται δεκτές έως 2 ώρες πριν από την έναρξη της δημοπρασίας.

Η πληρωμή πρέπει να γίνεται αμέσως μετά το τέλος της δημοπρασίας στην Αίθουσα ή εντός 10 ημερών από την παραλαβή των λαχνών ή του τιμολογίου (για πελάτες Εξωτερικού). Σε αγοραστές εντός Ελλάδος οι λαχνοί αποστέλλονται επί αντικαταβολή και σε γνωστούς πελάτες χωρίς προπληρωμή, για πληρωμή αμέσως μετά την παραλαβή των λαχνών. Αν η πληρωμή καθυστερήσει πέραν των 10 ημερών, η Εταιρία διατηρεί το δικαίωμα να επιβαρύνει το λογαριασμό με το νόμιμο επιτόκιο. Η κυριότητα των λαχνών παραμένει στον πωλητή, μέχρις ότου αποπληρωθεί ο λογαριασμός. Συμμετοχή αγοραστή στη δημοπρασία μπορεί να αποκλεισθεί, αν κατά την κρίση του πωλητού, ο αγοραστής δεν εκπληρώνει τους όρους της καλής πίστεως.

Η ταχυδρόμηση των λαχνών ή του τιμολογίου γίνεται στην διεύθυνση, που φαίνεται στο έντυπο προσφορών. Τα έξοδα αποστολής βαρύνουν τον αγοραστή. Η απόδειξη παραλαβής "Συστημένου" του Ταχυδρομείου αποτελεί για την Εταιρία και απόδειξη παραλαβής του υλικού από τον αγοραστή.

Στην τιμή κατακύρωσεως προστίθεται ποσοστό 18% για προμήθειά μας και επί πλέον ο αναλογών ΦΠΑ επί της προμήθειάς μας. Όλες οι τιμές στον κατάλογο είναι σε ΕΥΡΩ.

Απούλητοι λαχνοί με τιμή εκκίνησης "OFFER" δεν διατίθενται προς πώληση μετά τη λήξη της δημοπρασίας. Η τιμή πώλησης των λαχνών με την ένδειξη "OFFER" ορίζεται από το ποσό της προσφοράς, με κατοχύρωση του λαχνού στην υψηλότερη.

Ο πλειοδότης (είτε βρίσκεται στην Αίθουσα, είτε έχει καταθέσει την προσφορά του μέσω τηλεφώνου/email) είναι υπεύθυνος για την εξόφληση του τιμολογίου, εκτός αν έχει συνεννοηθεί γραπτώς ειδάλλως με την Εταιρία.

Οποιοσδήποτε λαμβάνει μέρος στη δημοπρασία είναι γνώστης των προαναφερομένων όρων και τους αποδέχεται πλήρως. Οποιαδήποτε διαφωνία μεταξύ των συμβαλλομένων μερών τίθεται στην κρίση και δικαιοδοσία του αρμοδίου Δικαστηρίου Θεσσαλονίκης.

CONDITIONS OF SALE

All descriptions are reliable and accurate and the lots are sold as genuine and authentic, unless the contrary is indicated. The purchaser may reject the lot and return it within 7 days (post office date stamp) after the end of the auction, if he proves it is not genuine or incorrectly described. The lots must be returned intact and as originally despatched. Lots which have been examined by the buyers before the auction cannot be returned. Also, lots purchased in the room cannot be returned after leaving the place. Buyers have no right to reject mixed lots, collections containing undescribed items, or described as having defects. Any illustration is part of the description and items cannot be returned for defects visible in it. When the value of a lot lies in the cancellation and not in the stamp, any defects of the latter shall not be a reason for rejecting the lot.

The highest bidder shall prevail. In case of equal mail bids, the earlier arrived will be considered as successful. Telephone bids are acceptable, but should be confirmed in writing.

Before start selling or the date of the auction the Auctioneer has the right to withdraw any of the lots, to divide it into two or more parts, or to join two or more lots into one.

Large lots may not be available for viewing in Athens unless especially selected. Viewing of those unavailable lots is still possible in our offices in Thessaloniki.

Bids should be received at least 2 hours before the start of the Sale.

Payment must be made in full just after the end of the sale in the room, or within 10 days after receipt of our invoice. Foreign buyers can pay by credit card (we accept Visa and Mastercard) or by Bank Cheque, personal cheque and money order in foreign currency or in euro. Interest shall be payable by the purchaser on any overdue account. The Auctioneer has a discretion to waive payment of the interest. Title shall remain to A. KARAMITSOS until payment in full is received. Any buyer could be excluded if he is not a person of good faith, according to the Auctioneer's opinion.

The invoices and the lots will be mailed to the address given on the bidding form. Postage and insurance is charged to the buyers. The receipt for "Registered" letter by the Post Office constitutes delivery receipt for the Auctioneer.

A 18% buyer's commission will be added to the "hammer price" for each lot, plus the respective Value Additive Tax (VAT) on our commission. All prices expressed in the catalogue and all bids are in euro, unless otherwise is stated.

Unsold lots with starting price "OFFER" are not available for sale after the end of the auction.

The sale price of lots marked as "OFFER" is defined by the highest offer, highest bid wins the item at said price.

The bidder (either via mail or in the room) is responsible for the invoice's payment, unless otherwise agreed, in writing, with the company.

Anyone who will take part in this Auction is familiar to the conditions of sale and accepts them. Any dispute shall be subject to the jurisdiction of the competent Court in Thessaloniki, Greece.



- 1 PAPER, COLOUR AND PRINTING METHOD PROOFS: 11l. deep brown on thin white paper. Very fine. (Konst. 1.ΔΟΚ.III.2). E 30 €



- 2 PAPER, COLOUR AND PRINTING METHOD PROOFS: 20l. black, plate flaw thin circle, on reverse 11 brown. Very fine and rare since few sheets were printed so plate flaws are quite scarce. (Konst. 5.ΔΟΚ.I.6). E 80 €



- 3 PAPER, COLOUR AND PRINTING METHOD PROOFS: 20l. blue, on reverse printed 20l blue tete-beche. Very fine to Superb. (Konst. 5.ΔΟΚ.II.3). E 80 €



- 4 PAPER, COLOUR AND PRINTING METHOD PROOFS: 20l. blue printed on both sides on bluish paper. On reverse, tete beche double print, one inverted. Additional double printing on face, not mentioned by Konstantinides. Very fine. (Konst. 5 ΔΟΚ.II.7var). E 60 €

1861 Paris Print



- 5 1l brown, used. Large/even margins all around. Very fine. (Hellas 1a). o 120 €



- 6 1l red-brown with vertically laid background tied by "32" (ΣΠΑΡΤΗ) cds. Impressive color shade. Very fine to superb. (Hellas 1b). o 150 €



- 7 1l chocolate tied by "25" (ΚΥΠΑΡΙΣΣΙΑ) cds. Very fine - superb. (Hellas 1c). o 120 €



- 9 2l bistre tied by "88" (BYTINA) cds. Large/even margins all around. Superb. (Hellas 2a). o 20 €



8 2l. bistre mint block of 50. The 2 vertical blocks of 4 and the pair between at right are re-joined, very fine. (Hellas 2a).

** 3200 €



- 10 2l olive - bistre, mint. Large/even margins all around, full original gum. Superb. * 15 €
(Hellas 2b).



- 11 2l olive - bistre tied by "39" (ΘΗΒΑΙ) cds. Superb. (Hellas 2b). o 24 €



- 12 2l brown-bistre in mint pair. Very fine. (Hellas 2c). * 25 €



- 13 2l brown-bistre, used. Superb. (Hellas 2c). o 20 €



- 14 5l yellow - green (pos.14), plate flaw lines in the spandrel, used. Very fine and scarce. (Hellas 3a5F16). o 50 €



- 15 5l green, mint. Full original gum and large margins all around. Very fine. (Hellas 3b). * 200 €



- 16 5l green tied by "31" (ΚΑΛΑΜΑΙ) cds. Very fine. (Hellas 3b). o 40 €



- 17 Cover fr. with 10l. yellow-orange on blue and 20l. blue canc. "ΣΥΡΟΣ*4.OKT.61", via "ΑΘΗΝΑΙ*6.OKT.61", arr. "ΚΑΛΑΜΑΙ*10.OKT.61". Cachet "Π.Ε.Δ." in red, the letter was carried by Austrian ship. VERY EARLY USE FOR THE 10 LEPTA VALUE. Very rare and very important. (Hellas 4a+5a). C 500 €



- 18 10l orange on blue, used. Large to very large margins all around. Superb. o 150 € (Hellas 4b).



- 20 10l orange on blue (pos.86), inverted "1" on control number (Kound. 4.2), used. Large margins all around, superb for this very rare error. (Hellas 4bNa). o 650 €



- 19 10l. orange on blue (pos.141) showing very wide pre-print paper folding, used. According to Constantinides study, this exceptional item belongs to a unique sheet (through pos. 141-147). Ex. Mavrides. (Hellas 4b). o 1800 €



- 22 10l. red-orange without control number, in left marginal bl.4. A couple of tiny paper porous, as usual, totally insignificant for this. Superb and extremely rare item. (Hellas 4Bb). (*) 4500 €



- 21 10l orange on blue. Only small part of gum exists, practically mint not gum. Very fine. (Hellas 4A). (*) 100 €



- 23 20l. blue in mint pair (pos.87-88). Full original gum. Large margins all around. Very fine and rare, especially in this quality. (Hellas 5a). * 600 €



- 24 20l blue, used. Large margins all around. Superb. (Hellas 5a). o 45 €



- 25 20l blue on thin, semi-transparent pelure grained paper (4.3-4,5μ), used. Bottom margin narrow but very fine for this. Very rare. (Hellas 5aPa). o 150 €



- 26 20l blue on thin paper (5.2μ), used. Large margins all around. Superb. (Hellas 5aPa). o 80 €



- 27 Cover written "Χανιά 9 8βρίου 1861" to Syros. Oval cachet "ΠΡΑΚΤΟΡΕΙΟΝ ΤΗΣ ΕΛΛ. ΑΤΜΟΠΛΟΙΑΣ ΧΑΝΙΩΝ ΚΡΗΤΗΣ", marked "20", fr. on arrival with 20l blue tied by "67" cds and canc. "ΣΥΡΟΣ*14.ΟΚΤ.61". Very fine. (Hellas 5a). C 250 €



- 28 20l. dark deep blue, tied by Patras "9" cds. Large - very large margins all around. Superb and rare, especially in this quality. Certificate O.Vlastos (1992). (Hellas 5d). o 750 €



- 29 20l. blue, unused. Very fine. (Hellas 5A). (*) 65 €



- 30 40l. mauve on blue, mint. Very fine. (Hellas 6a). * 65 €



- 31 40l mauve on blue, used. Very fine. (Hellas 6a). o 35 €



- 32 40l dull mauve on blue, used. Large - very large margins all around. Superb. (Hellas 6b). o 40 €



33 80l rose-carmine, used. Superb. (Hellas 7a). o 32 €



34 80l. carmine in mint lower marginal copy. Signed O.Vlastos. Superb. (Hellas 7b). * 80 €



35 80l carmine, used. Very fine. (Hellas 7b). o 32 €



36 Fully paid entire letter from Patras 21.12.1861 via Athens 24.12 to Triest 16.1.1862 with 75 lepta consisting of 5l. + 10l. +20l. + 40l. all Paris print. Very fine four-colour franking. (Hellas 3b+4a+5a+6b). EL 1100 €



37 Cover in third-weight from Athens 6 Jan. 1862 to Triest 25.1, fr. with 225 lepta for a weight between 35 and 45gr. 5 and 20l. Provisional and 40 and 80l. Paris print. A very fine postal history item of the highest rarity. (Hellas 6b+7b+11la+13la). C 2350 €

1861/1862 Athens Provisional Printings



- 38 20l deep ultramarine (quadrille background), tied by Athens "1" cds. Certificate Tseriotis (2002). Ex Zachariadis collection. Very fine, a major rarity. (Hellas 81c). o 6500 €



- 39 20l. deep ultramarine (solid background) used with "44" pmk of Karpenission, some faults but still a very descent example of this most elusive shade. The most important Greek basic stamp rarity. (Hellas 81lb). o 3250 €



- 40 1l. deep chocolate (coarse impression - early printings, hard printing method stamp), unused. Very fine and very rare. (Hellas 91a). (*) 850 €



- 41 2l brown, unused. A very light thin at right in margin only. Most of the known copies of this very rare stamp have minor faults. Certificate Tseriotis (2008). Fine - very fine for this. A major rarity. (Hellas 101a). (*) 1600 €



- 42 2l brown-bistre in pair tied by "60" (KYMΗ) cds. Very fine and scarce. (Hellas 101b). o 150 €



- 43 2l bistre, used. Very fine. (Hellas 101c). o 40 €



- 44 2l pale bistre, used. Very fine. (Hellas 101d). o 40 €



- 45 5l. greyish green, heavy coarse print, hard method printing stamp, unused. Very fine and rare. (Hellas 111a). (*) 65 €



- 46 5l yellow-green, mint. Very fine. (Hellas 111b). * 75 €



- 47 5l green, used. Large margins all around. Very fine - superb. (Hellas 111b). o 40 €



- 49 5l deep olive green, used. Large margins all around. Very fine. (Hellas 111c). o 45 €



- 48 Entire letter fr. with 5l. green with very intense yellow wash in strip of 4, canc. "ΠΥΡΓΟΣ*5.ΙΟΥΛ.63", arr. "ΠΑΤΡΑΙ*6.ΙΟΥΛ.63". Upper margin narrow at places, touches frame line at left stamp and at right corner but still fine, rare and impressive. (Hellas 111b). EL 600 €



- 50 10l ochre-orange with yellowish wash in used strip of 3 (pos.48-50), plate flaw lines in spandrel (pos.50). Touched at lower right, still fine - very fine and rare. (Hellas 121a). o 360 €



- 51 10l orange in mint upper marginal copy. Full original gum, large/even margins all around. Very fine. (Hellas 121b). * 280 €



52 10l orange, used. Very fine. (Hellas 121b).

o 40 €



53 10l orange, inverted "1" on control numbers (Kound. 11.1), used. Thinned but rare. (Hellas 121bNa).

o 150 €



54 Entire letter fr. with 10l. orange in pair, canc. dot. "2" and "ΠΕΙΡΑΙΕΥΣ*1.ΔΕΚΕ.62", via "ΑΘΗΝΑΙ*1.ΔΕΚΕ.62", arr. "ΤΡΙΠΟΛΙΣ*5.ΔΕΚΕ.62". Fine and rare. (Hellas 121b).

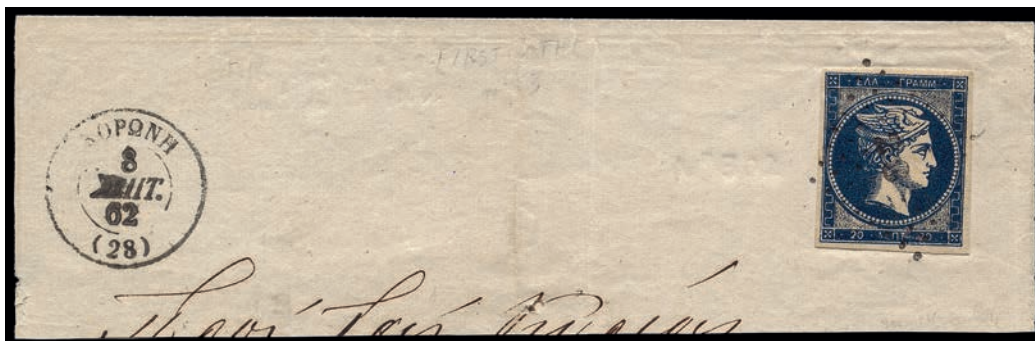
EL 200 €



- 55 20l deep ultramarine, used. Very large margins all around. Superb. Rare in this quality. Signed O.Vlastos. (Hellas 131a). o 240 €



- 56 20l indigo blue, used. Very fine. (Hellas 131b). o 200 €



- 57 20l. deep indigo with light greyish wash, on fragment tied by "28" cds and canc. "KOPONH*8.ΣΕΠΤ.62". Good/large margins all around. Superb copy of this. (Hellas 131b). Δ 250 €



- 58 20l prussian blue, deep colour shade, used. Superb. (Hellas 131c). o 75 €



- 59 20l deep blue with yellowish wash, tied by "64" (ΠΟΡΟΣ) cds. Very fine and rare. (Hellas 131d). o 75 €



- 60 20l. deep blue with greyish wash (pos.28), plate flaw line crossing upper inscription, tied by "86" (ΦΙΛΙΑΤΡΑ) cds. Very fine to Superb and scarce. (Hellas 131d20F6). o 100 €



- 61 40l mauve on blue in upper marginal copy, used. Very fine. (Hellas 141a). o 150 €



- 62 40l dull mauve on blue, mint. Good/even margins all around, full original gum. Very fine and very rare in mint. (Hellas 141b). * 2500 €



- 63 40l dull mauve on blue, used. A closing part at bottom left, but still very fine. (Hellas 141b). o 130 €



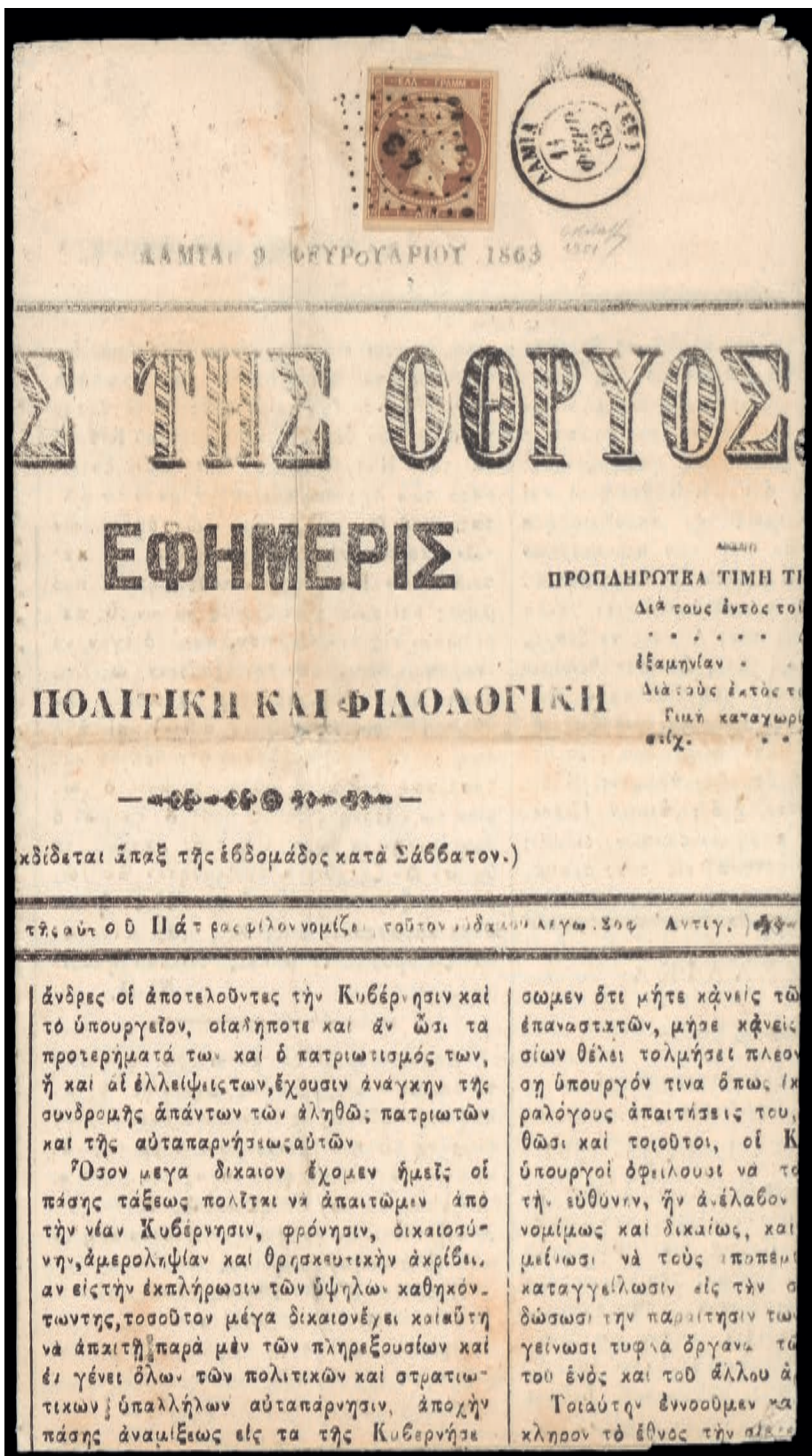
64 1l deep chocolate, unused. Very fine and rare. (Hellas 9IIa). (*) 250 €



65 1l bistre-brown in left marginal copy, unused. Very fine. (Hellas 9IIb). (*) 100 €



67 1l brown, used. Very fine. (Hellas 9IIc). o 120 €



66 Newspaper "ΦΑΡΟΣ ΤΗΣ ΘΩΡΥΟΣ/ΛΑΜΙΑ 9 ΦΕΒΡΟΥΑΡΙΟΥ 1863" fr. with 1l. brown-bistre tied by "43" postmark and canc. "ΛΑΜΙΑ*11.ΦΕΒΡ.63". Superb and very rare. (Hellas 911b). PRESS 1500 €



68 2l bistro in mint bl.25 (pos.6-10/46-50). Certificate Zeis (1990). Very fine and very rare. (Hellas 10IIa). ****/* 1800 €**



69 2l bistro, mint. Superb. (Hellas 10IIa). *** 20 €**



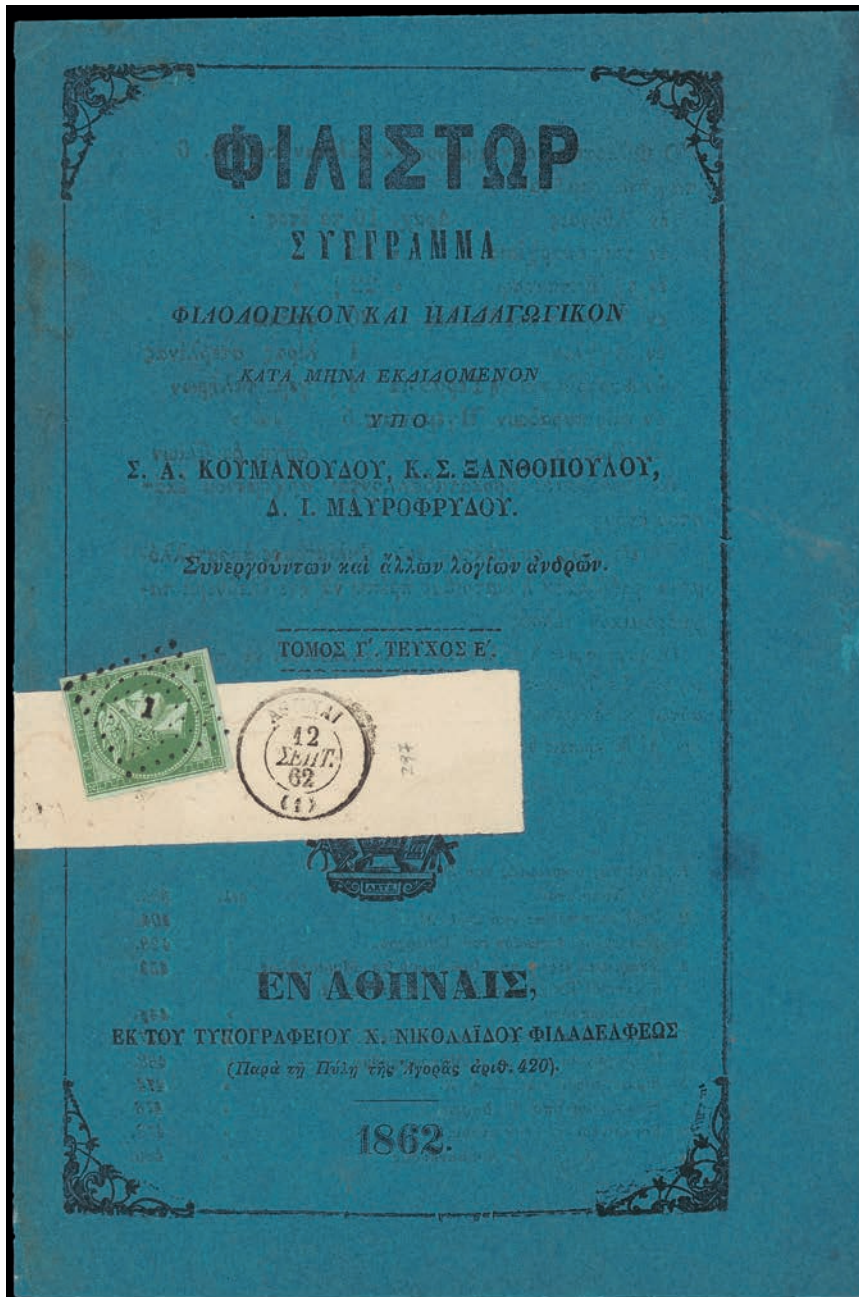
- 70 2l bistre, used. Large margins all around. Superb. (Hellas 1011a). o 25 €



- 71 2l yellow-bistre, mint. Very fine. (Hellas 1011b). * 20 €



- 73 1880 cover fr. with 5l. green in pair (fine impression) and 10l. red-orange, canc. "KAPYTAINA*8.IAN.80" to Sparti. An unusual usage of stamps issued 15 years apart. A RARE late use of 5l. 1861/62 issue. Certificate by P.Holcombe (1986). Signed by D.Spanos. Rare. (Hellas 1111a+50c). C 200 €



- 72 Booklet "ΦΙΛΙΣΤΩΡ" issued in Athens with a wrapper and 5l. Provisional canc. "ΑΘΗΝΑΙ*12.ΣΕΠ.62". A beautiful and extremely rare usage. (Hellas 11IIa).

Doc 1000 €



- 74 5l deep green, unused. Very fine. (Hellas 11IIb).

(*) 50 €



- 75 10l orange in upper marginal copy, mint. Very fine. (Hellas 12IIa). * 150 €



- 76 10l orange with intense yellowish wash, used. Very fine and rare. (Hellas 12IIa). o 35 €



- 77 10l orange, used. Very fine. (Hellas 12IIa). o 25 €



- 78 10l yellow - orange, used. Strong relief. Very fine and rare. (Hellas 12IIb). o 65 €



- 79 20l deep blue, used. Very fine. (Hellas 13IIa). o 50 €



- 80 20l blue, mint. Good-large/margins all around, original gum. Very fine and rare. (Hellas 13IIb). * 750 €



- 81 20l blue with greyish wash on fragment canc. "ΣΤΗΛΙΣ*6.ΙΟΥΝ.62". Very fine and rare. (Hellas 13IIb). o 40 €



- 82 20l blue, plate flaw thin circle, used. Very fine. (Hellas 13IIbCF2). o 35 €



- 83 40l mauve on blue, used. Large/even margins all around. Superb. (Hellas 14IIa). o 130 €



- 84 40l dull mauve on blue, unused. Certificate O.Vlastos (1992). Superb and rare in unused. (Hellas 14IIb). (*) 900 €



- 85 40l dull mauve on blue, used. Superb. (Hellas 14IIb). o 130 €



- 86 Unpaid entire letter from "TRiest*15/1" to Syros. Handwritten "3/15" (Kr) and "75" (lepta), fr. on arrival with 40l. light mauve on blue, 20l. blue Paris issue, 5l. green with broken circle and 10l. orange with intense yellow wash to pay the 18Kr=55l. Austrian and Lloyd rate + 20l. Greek inland fee, tied by "67" (Sira) cds and canc. "ΣΥΡΟΣ*2.ΙΑΝ.62". A very fine and rare cover. (Hellas 6b+5a+12lb+11bCF3). EL 1400 €

1862/1867 Consecutive Athens Printings



- 87 1l chocolate brown, signs of contour in front of the head, mint. Very fine. * 20 €
(Hellas 15A).



- 88 1l chocolate-brown with vertically laid background in mint never hinged bl.4. Very fine. (Hellas 15a). ** 100 €



- 89 1l chocolate brown with vertically laid background in right marginal copy, used. o 20 €



- 90 1l brown with horizontally laid background in mint never hinged right marginal bl.10. Signed O. Vlastos. Upper strip with light gum crease, still a very fine multiple. ** 250 €



91 1l brown, used. Very large margins all around. Superb. (Hellas 15b). o 27 €



92 1l milky brown, used. Very fine. (Hellas 15ba). o 30 €



93 1l red-brown, used. Very fine. (Hellas 15c). o 40 €



94 1l claret - brown, used. Very fine. (Hellas 15d). o 35 €



- 95 2l bistre, contour behind the head and very strong relief, mint. Very fine. (Hellas 16A).

* 60 €



- 96 2l yellow bistre with vertically laid background, used. Very fine. (Hellas 16A).

o 60 €

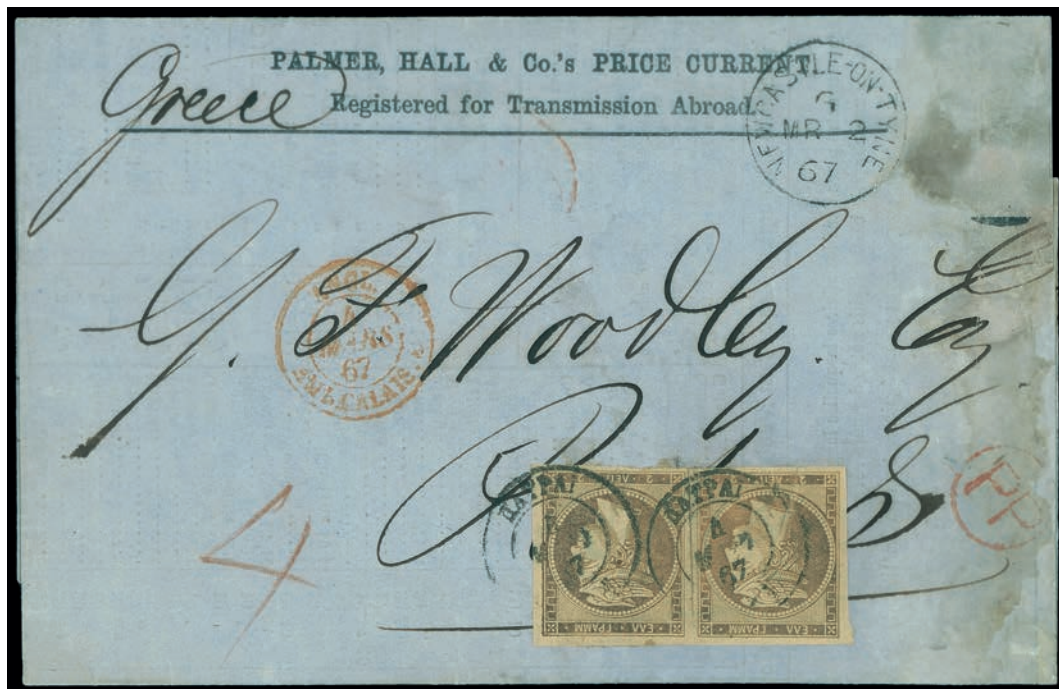


- 98 2l brown - bistra in right marginal copy printed on folded paper, mint. Very fine. (Hellas 16c).

* 30 €



- 97 2l bistre in mint never hinged bl.30 (pos.121-150) with the oval cachet "ΕΛΕΓΧΟΣ" ** 450 €
on the right corner. Superb. (Hellas 16b).



- 99 Printed matter- a pricelist for iron and coal- from the Newcastle-on-Tyne Mar 2, Doc 1200 €
1867 paid to the Greek border "PP" taxed in Patras with the inland rate for Printed
Matters of 4l. Definitive Athens Printings. (Hellas 16c).



100 5l green in mint bl.4. Lower pair u/m. Very fine. (Hellas 17a).

*/** 600 €



101 5l green, mint. Superb. (Hellas 17a).

* 65 €



103 5l olive - green, used. Very fine. (Hellas 17c).

o 16 €



- 102 Cover from Zakynthos Dec 23, 1880 via Kerkyra to Venezia with a strip of 6 of the 5l. Definitive Athens. These stamps were printed in 1863, 17 years earlier-very late use. A most exquisite and unique UPU usage. (Hellas 17b).

C 1500 €



- 104 10l yellow-orange in mint left marginal bl.4. Lower pair u/m. Certificate Holcombe (1983). Superb quality. (Hellas 18a).

*/** 1400 €



- 105 10l yellow-orange with strong relief, used. Large/even margins all around. Superb. o 17 €
(Hellas 18a).



- 106 10l orange, mint. Superb. (Hellas 18b). * 100 €



- 107 10l orange in vertical pair (pos.140/150) tied by "65" (ΥΔΡΑ) cds. Very fine. o 40 €
(Hellas 18b).



- 108 10l red-orange in used vertical pair (pos.140/150). Small part of the oval cachet "ΕΛΕΓΧΟΣ" (pos.150). Very fine. (Hellas 18ba). o 40 €



- 109 10l red-orange (pos.87), "01" instead of "10" on control number (Kound. 30.4), used. Very fine. (Hellas 18baNd). o 50 €



- 111 10l orange on blue in right marginal copy, used. Large margins all around. Superb. (Hellas 18d). o 15 €



- 110 10l reddish flesh (salmon) in mint pair. A very light thin in margin between, totally insignificant for this. Large margins all around, full original gum but a small gumless spot due to hinge removal-thus the thin, very fresh color, impressive color shade, superb overall. Certificate Holcombe (1992). A major rarity as only two pairs from this elusive shade exists. (Hellas 18c).

* 12000 €



- 112 "ZANTE ERROR": 10l orange on blue (pos.20 before the upper frame line indented), control number inverted printed on the face, canc. "ΖΑΚΥΝΘΟΣ*7.ΟΚΤ.." (Kound. 30.1). MAY BE THE HIGHEST QUALITY STAMP FROM THIS FAMOUS ERROR. Certificate Tseritis (2003). (Hellas 18dNm).

o 15000 €



- 113 10l red-orange on blue in pair (pos.107-108) tied by "60" (ΚΥΜΗ) cds in blue. Plate flaw Greek border connected to the circle (pos.107). Superb. (Hellas 18e10F23+18e). o 50 €



- 114 Entire letter from "ΣΜΥΡΝΑ (ΤΟΥΡΚΙΑ)*6.ΔΕΚΕ.62" to Syros. Marked "50" fr. on arrival with 5l. deep green with greyish wash in marginal pair and 2x20l. sky-blue with very strong relief, "Chiffres maigres" (typical transitional printing) tied by "67" postmark and canc. "ΣΥΡΟΣ*10.ΔΕΚΕ.62". 50l. to pay Greek inland postage and Lloyd fee. Fine and extremely rare. (Hellas 111lb+19A). EL 400 €



- 115 20l sky-blue (pos.63), control number "80" instead of "20" (Kound. 31.1), used. Good/even margins all around. Very fine and rare, especially in this quality. (Hellas 19aNe). o 1000 €



- 116 20l blue (deep shade), mint. Full original gum, large/even margins all around. Superb. (Hellas 19b). * 120 €



- 117 20l blue (pos.10) canc. "ΚΑΤΟΥΝΑ" (type II) - weak strike. Upper right corner creased ironed out affecting frame line, still a very impressive stamp bearing a rare postmark. (Hellas 19b). o 30 €



- 118 20l blue (pos.72/last setting), double control numbers vertically in a distance of 1-1.5mm approx. of the same color with Grooms characteristic "0" No.6 (Kound. 31.3.n) tied by "1" (ΑΘΗΝΑΙ) cds. Very fine and rare. (Hellas 19bNoI). o 400 €



- 119 Double weight EL fr. with 20l. blue and canc. "18" and "ΤΡΙΠΟΛΙΣ*12.ΔΕΚΕ.63", via "ΑΘΗΝΑΙ*14.ΔΕΚΕ.63". On arrival boxed "ΠΛΗΡΩΜΗ/ΑΝΕΠΑΡΚΗΣ" and taxed with 20l. blue and canc. "ΣΥΡΟΣ*16.ΔΕΚΕ.63". Rare. (Hellas 19b).

EL 300 €



- 120 20l light grey-blue (oxid. corners), unused. Good-large/even margins all around. Small part of the original gum exists, practically mint no gum. Very fine and rare in unused. (Hellas 19d).

(*) 350 €



- 121 20l deep grey-blue (strongly oxidized corners/pos.141), used. A very impressive color shade. Superb. (Hellas 19d). o 15 €



- 122 20l blue on green (pos.150) with large part of the oval cachet "ΕΛΕΓΧΟΣ" which was stroke heavily, seen also on face, mint. Very fine. Rare in mint, especially with "ΕΛΕΓΧΟΣ". (Hellas 19e). * 450 €



- 123 20l deep blue, used. Very fine. (Hellas 19f). o 20 €



- 124 20l deep dark blue, boxed municipal post cachet "ΔΤ 35" (route Πτελεός - Γαρδίκι). Very fine and rare. (Hellas 19g). o 200 €



- 125 40l light mauve on blue with faint vertically laid background, unused. A tiny scratch at upper right spandrel and a closing corner at lower left, still overall a fine - very fine example of this rare, especially in unused, stamp. (Hellas 201A). (*) 500 €



- 126 40l mauve on blue in used right marginal pair. Very fine. (Hellas 201b). o 50 €



- 127 40l mauve on blue, double control numbers (Kound. 32.1), mint. Signed O. Vlastos. Two unused copies known, this one mint, the other mint no gum. Very rare. (Hellas 201bNol). * 2000 €



- 128 40l grey-mauve on blue, unused. Very fine. Rare in unused. (Hellas 201d). (*) 200 €



- 129 40l grey-mauve on blue in right marginal copy, used. Large - very large margins all around. Superb. (Hellas 201d). o 18 €



- 130 40l greyish rose on grey-lilac, mint. Signed O.Vlastos. Very fine. Rare in mint. (Hellas 2011a). * 320 €



- 131 40l greyish rose on grey - lilac (pos.19), plate flaw missing frame line and part of the inscription, used. Very fine. (Hellas 2011a40F1). o 20 €



- 132 40l rose-red on grey - lilac in lower marginal copy tied by "9" (ΠΑΤΡΑΙ) cds. Very fine and very rare. One of the most elusive color shades. (Hellas 2011b). o 1200 €



- 133 80l carmine (orange control number), used. Very fine. Scarce in this quality. (Hellas 21a). o 40 €



- 134 80l rose-carmine (orange CF), unused. Very large/even margins all around. Superb and rare in unused, especially in this quality. (Hellas 21b). (*) 180 €



- 135 80l rose-carmine (orange control number), used. Very fine. Scarce in this quality. (Hellas 21b). o 40 €



- 136 80l rose-carmine in mint lower marginal bl.4. Lower pair u/m. Very fine. */** 80 €



- 137 80l rose-carmine (pos.150), sheet corner mint copy with complete oval cachet "ΕΛΕΓΧΟΣ" and widely spaced control numbers (Kound. 33.5). Several light creasings in margin not affecting stamp. Superb and rare. (Hellas 22aNk). * 200 €



- 138 80l carmine (pos.9), inverted "8" on control number (Kound. 33.3), used. Superb. o 140 €
(Hellas 22bNa).



- 139 Cover fr. with 3x20l. blue (pair + single) and 5x2l bistre Paris issue (strip of 3 and 2 singles) tied by "68" (KEA) cds and canc. "KEA*17....", arr. "TRIEST....." to pay the prepaid Greece - Austria rate according to 04/1867 treaty. Late use for 2 lepta Paris issue stamps. Fine and rare. (Hellas 19b+2a). C 400 €



- 140 Double weight cover fr. with 3x10l orange on blue, 3x2l brown-bistre and 4x1l brown with horizontally laid background, all tied with "110" postmark and canc. C 1000 €
 "ΑΡΓΟΣΤΟΛΙΟΝ (ΚΕΦΑΛΛ.)*31.ΔΕΚΕ.65", arr. "ΚΕΡΚΥΡΑ*5.ΙΑΝ.66". The letter was carried by Greek ship. Minor imperfections but very rare with impressive and uncommon franking. (Hellas 18d+16c+15b).



- 141 Unpaid entire letter from "LONDON*24.JUN.67" via Calais and Athens arrived "ΠΑΤΡΑΙ (9)*21.ΙΑΝ.67". Charged upon arrival with 245 lepta, 5l. yellow-green and 80l. carmine in strip of 3. The 245 lepta consists of one and a half times the basic French transport rate of 150 lepta and of the Greek domestic rate of 20l. and it was applied to letters between 7 1/2 and 10 grs. Signed Tseriotis. Fine and rare. (Hellas 17b+22b). EL 600 €



- 142 Unpaid entire letter from Marseille to Syra. Handwritten "132", fr. on arrival with 3x40l. greyish rose on grey-lilac (pair+single), 10l. orange on blue and 2l. bistre to pay the 112l. France-Greece rate plus the 20l. Greek postage and canc. "ΣΥΡΟΣ*1. IOYN.67". One 40l. stamp crease and 2l. touched. Under 40 lepta stamps canc. "LIGNE 1 PAQ. FR.*8.JUIN.67". Very fine and rare. (Hellas 2011a+18d+16b).

EL 400 €



- 143 Double weight cover from "MANCHESTER*27.OC.62" to Syros. Transit postmarks "LONDON*28.OC.28", "AUS ENGLAND PER AACHEN", "WIEN*30/10" and "TRIEST*1/11". Marked "40/30/30" (40kreuzer from Manchester to Austrian borders, 30kr Austrian fee and 30kr Lloyd fee), marked in red "325" (lepta), fr. on arrival with 4x80l carmine (orange CF) and 5l. deep olive-green tied by "67" postmark and canc. "ΣΥΡΟΣ*25.OKT.62". Postmans cahcet "1" on arrival. One 80l stamp and 5l stamp creased due to paper fault, the rest 80l stamps very fine. Fine and rare. (Hellas 111c+21a).

C 1000 €

1867/1869 Cleaned Plates



144 1l. deep red brown in mint upper marginal copy. Superb. (Hellas 23a).

*

17 €



146 1l deep greyish - brown in right marginal copy with printers mark, used. Superb. (Hellas 23b).

o

24 €



147 2l grey-bistre in used pair. Large/even margins all around. Very fine. (Hellas 24a).

o

40 €



145 Pamphlet about 1870 Olympia athletic events (2nd period), fr. with 1l. red-brown and 5l. green canc. "1" (=ΑΘΗΝΑΙ), arr. "JANINA*23.12" (Austrian P.O.). On wrapper administrative cachet on arrival "ΠΡΟΞΕΝΕΙΟΝ ΤΗΣ ΕΛΛΑΔΟΣ ΕΝ ΙΩΑΝΝΙΝΟΙΣ". Very fine and rare. (Hellas 17a+23a).

Book 250 €



- 148 5l green, mint. Two narrow and two good-large margins. Original gum but a gumless spot due to hinge removal. Very fine for this very rare in mint stamp. (Hellas 25a). * 1500 €



- 149 5l green in used strip of 3. Right stamp creased vertically, still very fine for this rare used strip. (Hellas 25a). o 150 €



- 150 5l yellow-green, used. Very large/even margins all around. Superb. (Hellas 25a). o 45 €



- 151 10l red-orange (pos.130/1st setting), inverted "1" on control number (Kound. 37.3), unused. Superb and rare in unused. (Hellas 26aNa). (*) 380 €



- 152 10l red-orange (pos.43/2nd setting), inverted "0" on control number (Kound. 37.4) and plate flaw open cross (upper right), mint. Very fine for this. (Hellas 26aNb). * 600 €



- 153 10l. reddish flesh (Salmon) on bluish paper, inverted "1" (Kound. 37.3/pos.42). Very fine for this. THE ONLY KNOWN UNTIL NOW. (Hellas 26bNa). o 6000 €



- 154 10l red-orange on greenish-yellow, used. Very fine. (Hellas 26c). o 60 €



- 155 20l sky-blue (pos.87), mint. Very fine and rare. (Hellas 27a). * 400 €



- 156 20l blue (pos.70), inverted "0" on control number (Kound.38.2), plate flaw indentation of the left frame line, used. Superb. (Hellas 27aNb). o 20 €



- 157 40l grey-mauve on blue, double control numbers with the second printed lighter vertically in a distance of 2mm (Kound.39.2.c), canc. "108" (ΛΕΥΚΑΣ). Very fine. This is the second known copy. Very rare. (Hellas 28aNol). o 600 €



158 40l mauve on blue in mint bl.4 (pos.121-122/131-132), deformed "4" on control number (Kound. 39.4.b/pos.122). A tiny thin spot due to hinge removal, still very fine to superb. (Hellas 28b).

* 550 €



159 40l mauve on blue in mint pair (pos.127-128), wrong control number "20" corrected to "40" (Kound. 39.1/pos.127). Certificate O.Vlastos (1992). Superb and rare. (Hellas 28bNf).

* 1000 €



160 40l mauve on greenish, used. Very fine. (Hellas 28c).

o 18 €



- 161 Cover fr. with 2x10kop Russian stamps, to pay to Cosntantinoulopis, canc. "ODECCA*21.OKT.1872" to Hydra. Transit postmarks "ΚΩΝΣΤΑΝΤΙΝΟΥΠΟΛΙΣ (ΤΟΥΡΚΙΑ)*25.OKT.72" and "ΠΕΙΡΑΙΕΥΣ*29.OKT.72". Marked "45" to pay the ship and the Greek inland postage, fr. on arrival with 5l green and 40l mauve on green (creased due to cover fold) cand. "ΥΔΡΑ (66)...". Fine and rare. (Hellas 17a+28ca). C 750 €



- 162 80l rose-carmine in mint bl.4 (pos.69-70/79-80), plate flaws line on the Greek border (pos.69) and thin circle (pos.79). Superb. (Hellas 29a). * 300 €



163 80l rose-carmine, used. Large margins all around. Very fine. (Hellas 29a).

o 60 €



164 80l carmine in mint pair (pos.79-80). Superb. (Hellas 29b).

* 120 €



165 80l carmine (pos.147), uneven control numbers (Kound. 40.5), used. The same control number error exists on 10 lepta and 20 lepta of the same period stamps. Very fine. (Hellas 29b).

o 80 €



- 166 Insufficient (5kr. Austr. stamp) paid cover canc. "LEOPOLDSTADT WIEN*24.11.69" to Zante. Postage was 30kr (=82 lepta) from 15.5.1868. 5kr considered valid, therefore the cover was taxed with 70 lepta (or 69 lepta sometimes=25kr) and fr. with 10l. red-orange and 3x20l. sky-blue and canc. "ZAKYNGOS*19.NOEM.69". On reverse Corfu transit postmark. Flap missing, still a fine and scarce postal history item. (Hellas 18ba+27a). C 850 €



- 167 Cover canc. "OLTENITZA*27/11" fr. with 50ba Rumanian stamp to Sira. Handwritten "Franco", boxed "PD", marked "20" and fr. with 20l. sky-blue to pay the Greek rate. On reverse transit canc. "CONSTANTINOPEL*3/12". Very rare. (Hellas 27aNb). C 2500 €

1870 Special Athens Printing



- 168 1l light reddish brown (pos.67), plate flaw white dot on "MM", used. Very fine and scarce. (Hellas 30a1F3). o 60 €



- 169 1l reddish brown, used. Very fine. (Hellas 30b). o 60 €



- 170 20l deep greyish blue (bleu de Sevres), used. Superb and rare, especially in this quality. (Hellas 31a). o 60 €



- 171 20l sky-blue, mint. Full original gum. Very fine and rare. (Hellas 31b). * 450 €



- 172 20l sky-blue, used. Very large margins all around. A gem item. (Hellas 31b). o 12 €



- 173 20l sky-blue, control number inverted (Kound. 42.3), tied by "7" (ΑΙΓΙΟΝ) cds. Very fine. (Hellas 31bNm). o 150 €



- 174 20l blue, used. Large-very large/even margins all around. Superb. (Hellas 31c). o 15 €



- 175 20l vivid deep blue, used. Superb. (Hellas 31d). o 10 €



- 176 Cover fr. with 2x5sld Venetto - Lombardo perf. 9 1/2 canc. "PREVESA*10/11" to Athens. "P.P." in black, marked "20", fr. on arrival with 20l sky-blue to pay the Greek inland rate and canc. "ΑΘΗΝΑΙ*15.ΝΟΕΜ.70" (weak). A small part of cover cut off, still fine with attractive franking and rare. (Hellas 31b) C 500 €

1871/1872 Printings



- 177 1l red-brown, unused. Very fine and scarce. (Hellas 32a). (*) 65 €



- 178 1l purplish-brown, unused. Very fine and scarce. (Hellas 32b). (*) 60 €



179 2l yellow-bistre in mint never hinged bl.4. Very fine. (Hellas 33a).

** 22 €



180 2l rose-bistre in used pair. Very fine and scarce, especially in this quality. (Hellas 33b).

o 70 €



185 Cover fr. with 2 pairs 5l. sage-green canc. "ΠΥΡΓΟΣ*17.ΝΟΕΜ.??", arr. "ΠΑΤΡΑΙ*18. ΝΟΕΜ.??". Very fine. (Hellas 34b).

C 200 €



- 181 5l green in used strip of 4 canc. "ΓΥΘΕΙΟΝ*25.ΝΟΕΜ.76". Left stamp slightly creased vertically, still very fine to superb. Rare. (Hellas 34a). o 400 €



- 182 5l yellow-green, double control number in a distance of 2.5mm vertically and 3mm horizontally (Kound. 45.1), used. Not mentioned in Koundouros study. Very fine, impressive and rare. (Hellas 34aNoI). o 650 €



- 183 5l sage-green, used. Superb and rare in this quality. (Hellas 34b). o 50 €



- 184 5l sage-green (pos.10), used. Superb. Scarce in this quality. (Hellas 34b). o 45 €



- 186** 20l sky-blue (pos.100), plate flaw white line behind the head. Triple control numbers, a second number of the same color in a distance of 1.8mm vertically and 0.5mm horizontally while a third control number is printed to the right very light and very close (kiss print) (Kound.47.1.hvar), stamp tied by Patras "9" cds. A case not mentioned in Koundouros study. Very fine, impressive and unique so far. (Hellas 35aN011). o 1500 €



- 187** 20l sky-blue (pos.22), plate flaws thin circle and oblique line at the upper part of the stamp, mint. Very fine and rare. (Hellas 35aCF2). * 350 €



- 188 20l blue (pos.26), plate flaw white line at the upper inscription, unused. Superb. (*) 250 €
Scarce in unused. (Hellas 35c).



- 189 20l blue (pos.131/1st setting), used. Enormous margins all around. Gem item. o 15 €
(Hellas 35c).



- 190 20l steel-blue (pos.20), used. Superb. (Hellas 35d). o 12 €



- 191 20l deep blue (pos.89), "02" on control number instead of "20" (Kound. 47.3), used. o 160 €
Very fine. (Hellas 35eNd).



- 192 40l rose-bistre on greenish in upper marginal copy, mint. Full original gum. Certificate Holcombe (1986). Very fine. Scarce in mint. (Hellas 36b). * 220 €



- 193 40l rose-bistre on greenish, used. Very fine. (Hellas 36b). o 25 €



- 194 40l yellow-bistre on greenish, used. Superb. (Hellas 36c). o 34 €



195 Entire letter fr. with 40c Italian stamp tied by "196" postmark and canc. "VENEZIA*14.LUG.71" to Corfu. Inscribed "via de Trieste", boxed "FRANCOBOLLO INSUFICIENTE", marked "22" and taxed for the missing rate with 20l blue and 2l bistre and canc. "ΚΕΡΚΥΡΑ*5.ΙΟΥΛ.71". Signed O.Vlastos. Fine and rare. (Hellas 35a+16b).

EL 1500 €



196 Prepaid cover fr. with 40l yellow-bistre on greenish and 3x20l blue canc. "ΖΑΚΥΝΘΟΣ*10.ΔΕΚΕ.72" to Taganrog. Inscribed "Via Vienna" - an unusual route instead via Constantinoupolis used sometimes for duplicate - boxed "PD", via "ΚΕΡΚΥΡΑ*12.ΔΕΚΕ.72", "TRIEST*27/12/72" and an ambulant railroad canc. in Russia dated 18 Dec 1872, arr. "TAGANROG*22.DEC.1872". Fine. (Hellas 36c+35c).

C 150 €

1871/1876 Meshed Paper



197 1l grey-brown, used. Large margins all around. Superb. (Hellas 37a). o 22 €



198 1l brown in right marginal mint bl.10. Hinged on margin only, stamps u/m. Very fine. ** 250 €



199 1l red-brown, used. Superb. (Hellas 37c). o 27 €



- 200 2l grey-bistre in mint pair. Superb and rare. (Hellas 38a). * 350 €



- 201 5l sage-green in right marginal mint copy. Full original gum and very large margins all around but a tiny paper porous, normal for that kind of paper, mentioned just for accuracy, overall still a superb copy. (Hellas 39a). * 400 €



- 202 5l green in used strip of 3. Very fine. (Hellas 39b). o 40 €



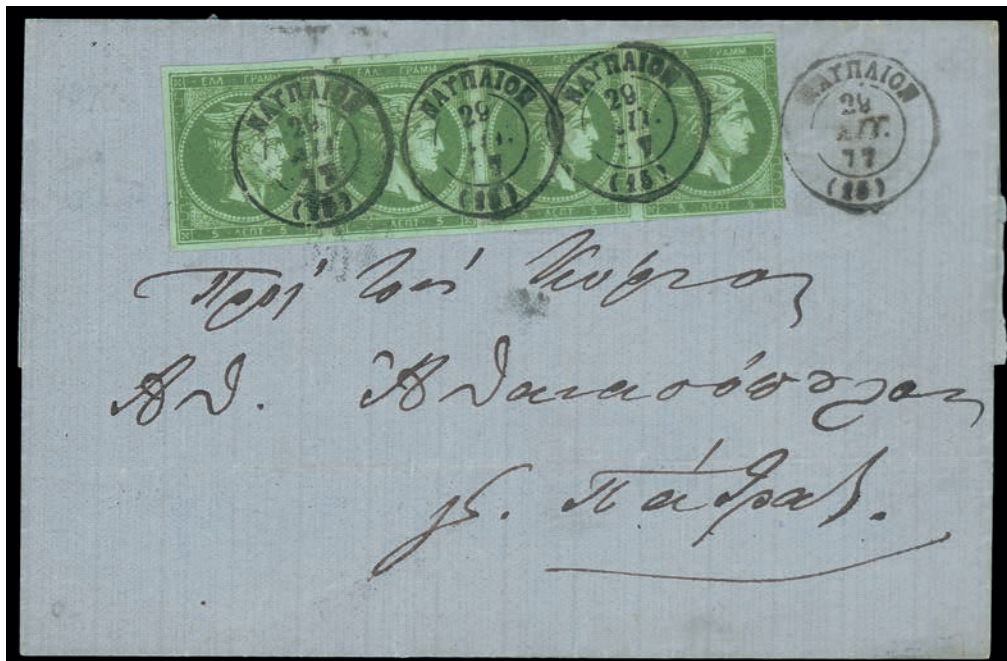
- 203 5l greyish green (pos.150) printed on intense folded paper, used. Creased horizontally but impressive and scarce. (Hellas 39c). o 50 €



204 5l emerald, used pair. Large - very large margins all around. Superb. (Hellas 39d). o 24 €



205 5l deep green, mint. Full original gum very large/even margins all around but a tiny thin spot at left in margin, mentioned for accuracy, still superb and scarce. (Hellas 39e). * 150 €



206 Letter sheet cover canc. "ΝΑΥΠΛΙΟΝ*29.ΑΥΓ.77" fr. with a strip of 4, 5l. deep olive-green, three stamps superb right stamp three margins, arr. "ΠΑΤΡΑΙ*31.ΑΥΓ.77". Fine and rare. (Hellas 39e). C 500 €



- 207 10l. orange, second control number printed obliquely (pos.69, Kound. 52.8). The oblique C.F. coming from the position 131. Touched at top but still fine for this. ONLY 4 KNOWN. (Hellas 40a). o 5000 €



- 208 10l orange (pos.31), widely spaced control number with "0" inverted (Kound. 52.11), used. Very fine. (Hellas 40aNbII). o 160 €



- 209 10l orange, displaced control numbers (Kound. 52.13) tied by "1" (ΑΘΗΝΑΙ) cds. Superb. Scarce in this quality. (Hellas 40a). o 30 €



- 210 10l orange in pair (pos.145-146) canc. "ΣΥΡΑ*2.ΜΑΡΤ.74", without control numbers (Kound. 52.6). Very fine and very rare, especially in this quality. (Hellas 40aNp) o 1300 €



- 212 10l orange-vermilion on lavender, unused. Very fine to superb. Rare in unused, especially in this quality. (Hellas 40d) (*) 1600 €



- 211 10l red-orange, unused, very few parts of the original gum exists. A tiny shallow thin spot, still very fine for this scarce in unused stamp. (Hellas 40b). (*) 160 €



- 213 10l orange-vermilion on lavender, displaced control numbers (Kound. 52.13), canc. "ΑΙΓΙΟΝ*.....76". One closing corner but still very fine and impressive. (Hellas 40d). o 80 €



- 214 Cover fr. with 10l orange-vermilion on lavender in pair canc. "ΑΙΓΙΟΝ*7.ΜΑΙΟΣ.77", arr. "ΑΘΗΝΑΙ*9.ΜΑΙΟΣ.77". Very fine and scarce in pair on cover. (Hellas 40d). C 150 €



- 215 20l bright sky-blue (pos.91), keyhole shaped "0" (Kound. 53.10), used. Very fine. o 45 €
(Hellas 41aNI).



- 216 20l deep blue in pair boxed with municipal post cachet (illegible) in green. Upper margin narrow, touched at left. Still fine and rare. (Hellas 41b). o 150 €



- 217 20l blue, displaced control number (Kound. 53.9), tied by Patras "9" cds. Very fine and scarce. (Hellas 41d). o 40 €



- 218 20l indigo blue (pos.118), keyhole shaped "0" (Kound. 53.10), used. Very fine. o 80 €
(Hellas 41eNI).



- 219 20l steel-blue in upper marginal copy, used. Superb. (Hellas 41g). o 15 €



- 220 20l blue on blue, mint. Very fine. Rare in mint. (Hellas 41h). * 300 €



- 221 40l dull olive-green on blue in mint bl.4. Lower pair u/m. Very fine. (Hellas 42la). */** 35 €



- 222 40l bronze on blue canc. "ΘΕΣΣΑΛΟΝΙΚΗ (ΤΟΥΡΚΙΑ)*29.ΜΑΙΟΣ...". Very fine and rare. (Hellas 42lc). o 70 €



- 223 40l greyish magenta on blue in mint pair. Very fine. Rare in mint. (Hellas 42IIa). * 400 €



- 224 40l greyish magenta on blue in left marginal copy, double control numbers in a distance of 0.5mm at right (Kound. 54.2), canc. "ΣΥΡΑ*13.ΦΕΒΡ.74". A case not mentioned in Koundouros study. Very fine and rare. (Hellas 42IIaNol). o 400 €



- 225 40l greyish magenta on blue (CF in dull olive-green), used. Large margins all around. Superb. (Hellas 42IIab). o 25 €



40l dull grey-mauve on blue canc. "ΒΩΛΟΣ (ΤΟΥΡΚΙΑ)*17.ΝΟΕΜ.72" in blue, double control numbers of the same colour printed in a distance of 4mm vertically and 3.5mm horizontally while a third control number at top, practically of the stamp above. This was known as the Volos error triple control numbers (Kound. 54.1.a.iiivar) but in this case the third number is off the stamp. A variation of this very rare and impressive error. Touched at upper right but a great rarity. (Hellas 42IbNoll).

o 2500 €



227 40l purplish mauve on blue, used. Signed Deilakis. Superb. (Hellas 42Ic).

o 30 €



228 40l deep bright purple on blue ("Groseille"), used. Very fine and rare. (Hellas 42Id).

o 270 €



- 229 Unpaid entire letter from Messina via Brindisi and Corfu. Handwritten "65", fr. on arrival with 5l yellow-green (stamp creased), 20l steel blue and 40l deep bright purple on blue (Grozeille, stamp very fine) all tied by "106" postmark and canc. "ΚΕΡΚΥΡΑ*.ΜΑΡΤ.74". 40 lepta "Grozeille" stamp very rare on cover. (Hellas 421ld+41g+39b). EL 700 €



- 230 Entire letter fr. with 80l carmine, 10l orange and 2x2l bistre canc. "ΑΡΓΟΣΤΟΛΙΟΝ (ΚΕΦΑΛΛ.)*26.ΔΕΚΕ.73" to London. Inscribed "via prindessi", boxed "PD", via "ΚΕΡΚΥΡΑ*29.ΔΕΚΕ.73", arr. "LONDON*15.ΙΑ.74". The letter was 2 lepta overpaid. Very fine. (Hellas 22b+16b+40a). EL 300 €

1876 Paris Printing



231 Proof for 30l. Paris printing in deep brown with intense double impression. Very fine. (Konst. 56.II.4).

E 70 €



232 30l. yellowish brown, unused. Very fine. Scarce in unused. (Hellas 43a).

(*) 75 €



233 30l. deep olive-brown, mint. Full original gum. Superb. (Hellas 43b).

* 65 €



- 234 Cover fr. with 30l. deep olive-brown canc. "ΣΥΡΑ*7.ΑΥΓ.76" arr. "MILLAU". Stamp superb. (Hellas 43b). C 150 €



- 235 60l. deep green on green in mint sheet corner copy. Superb. (Hellas 44a). * 10 €



- 236 60l deep green on green, canc. "ΘΕΣΣΑΛΟΝΙΚΗ (ΤΟΥΡΚΙΑ)*13...77". Very fine. o 30 €

1876/1877 Athens Printing



237 30l brown in used strip of 3. Superb. (Hellas 45b).

o 45 €



238 Registered cover (envelope) fr. with 30l brown in pair canc. "ΑΘΗΝΑΙ*1.ΔΕΚΕ.(79)", linear "CHARGE", via "MARSEILLE", arr. "BELFORT". Very fine and scarce. (Hellas 45b).

C 100 €



- 239 30l. sepia on yellowish, printed on folded paper, good margins all around, used. Very fine and impressive. (Hellas 45c). o 50 €



- 240 30l sepia on thin paper in right marginal mint copy. Superb and scarce. (Hellas 45dPa). * 30 €



- 241 30l yellowish brown (never issued stamp), mint no gum. Superb and rare. (*) 250 €



- 242 60l deep green, mint. Very fine to superb. Scarce in mint. (Hellas 46a). * 170 €



- 243 60l deep green, used. Superb. (Hellas 46a). o 20 €



- 244 60l dark green, mint. Very fine. Scarce in mint. (Hellas 46b). * 200 €



- 246 60l dark green on thin paper (5.7μ) in right marginal copy, used. Superb. (Hellas 46bPa). o 30 €



245 Cover fr. with 60l dark green canc. "ΑΘΗΝΑΙ*14.ΝΟΕΜ.78", via "ΣΥΡΑ*15.ΝΟΕΜ.78" C 700 €
to Chios. Singed Tseriotis. Superb and very rare. (Hellas 46b).



247 Large registered mourning cover, boxed "ΣΥΣΤΗΜΕΝΟΝ", fr. with 20l carmine and 2x30l brown, canc. "ΠΑΤΡΑΙ*12.ΜΑΙΟΣ.82", arr. "ΑΘΗΝΑΙ". Very fine and rare. (Hellas 45b+591b). C 200 €

1875/1880 Cream Paper



- 248 1l dark brownish purple, used. Very fine. (Hellas 47a). o 20 €



- 249 1l deep dark brown, mint. Very fine. (Hellas 47b). * 20 €



- 250 1l deep red-brown canc. "(ΑΘΗΝΑΙ) (1)*?.ΜΑΡΤ.79". Very fine. Scarce in used copy with clear year strike. (Hellas 47c). o 16 €



- 251 2l olive-yellow (pos.94) - never issued stamp, plate flaw white line on the Greek border, mint. Very fine and very rare. (Hellas 48b). * 650 €



- 252 5l yellow-green on white in right marginal mint pair. Superb. (Hellas 49a). * 100 €



- 253 5l emerald in right marginal copy, used. Superb. (Hellas 49e). o 50 €



- 254 5l vivid-green in mint bl.6, 4 never hinged stamps. Very fine and rare. (Hellas 49f). **/ 1000 €



- 255 10l orange (pos.36), "00" instead of "10" on control number (Kound. 52.7), used. Very fine. (Hellas 50bNel). o 50 €



- 256 10l orange (pos.74), keyhole shaped "0" (Kound. 62.12.1), used. Very fine. (Hellas 50bNII). o 40 €



- 257 10l red-orange in pair (pos.131-132) canc. "ΔΗΜΗΤΖΑΝΑ*6.ΙΟΥΝ.81" (type IIa). Printers mark on left margin. Very large/even margins all around. Superb. (Hellas 50c). o 25 €



- 258 10l red-orange (pos.141), "00" instead of "10" (Kound. 62.7/type I), used. In addition, control number in brick - orange. Very fine and attractive. (Hellas 50cNel). o 60 €



- 259 10l orange on yellowish, mint. Very fine. (Hellas 50d). * 100 €



- 260 10l orange on yellowish with double impression, used. Very fine for this and rare. (Hellas 50dVb). o 500 €



- 261 20l light prussian blue on white (pos.22), plate flaws thin circle and oblique line at the upper part of the stamp, mint. Very fine and very rare in mint. (Hellas 51aCF2). * 850 €



- 262 20l light prussian blue on white (pos.124), Grooms "2" No.12, used. Very fine. (Hellas 51a). o 20 €



- 263 Argostolion error with control numbers displaced and slightly uneven with "0" lower. 20l. blue (pos.8) canc. "ΑΡΓΟΣΤΟΛΙΟΝ (ΚΕΦΑΛΛ.) *20.ΙΟΥΝ.77", this is the 3rd known copy of this error with this date. Stamp pos.8, CF pos.143 (8+143=151) with "0" lower than "2" and CF displaced very intense. Two margins and torn at top but a very impressive CF triple error combination (Kound.63.2+63.15.1+63.16). A UNIQUE RARITY. (Hellas 51bNm). o 4000 €



- 264 20l blue (pos.145), uneven control numbers (Kound.63.15.2), used. Very fine. (Hellas 51b). o 20 €



- 265 20l royal blue in deep shade (pos.148), used. Very fine. (Hellas 51c). o 18 €



266 20l indigo blue, mint. Very fine. (Hellas 51d).

* 75 €



267 20l indigo blue, double control numbers of the same color with the second printed in a distance of 1,5mm vertically and (approx.) 2.7mm horizontally, canc. "ZAKYNΘΟΣ*21.ΙΟΥΝ.76" (Kound. 63.6.g). Very fine and rare. (Hellas 51dNoI).

o 350 €



268 20l ultramarine in mint bl.4. Lower pair u/m. Very fine and scarce. (Hellas 51f).

*/** 350 €



- 269 20l ultramarine (pos.74), keyhole shaped "0" (Kound. 63.10), used. Very fine. (Hellas 51fNII). o 40 €



- 270 20l ultramarine (pos.81), "02" instead of "20" with "0" inverted on control number (Kound. 63.8), used. Very fine. (Hellas 51fNdII). o 130 €



- 271 40l grey-bistre (pos.80), deformed "4" (Kound.64.3.a), used. Very fine. (Hellas 52a). o 35 €



- 272 40l rose-bistre canc. "ΠΥ(ΡΓΟΣ)*2?.ΦΕΒΡ.82" in blue. Superb. (Hellas 52b). o 24 €



- 273 Cover (envelope) mailed registered, linear "ΣΥΣΤΗΜΕΝΟΝ", fr. with 2x20l indigo blue and 10l red-orange, canc. "ΛΕΩΝΙΔΙΟΝ*5.ΜΑΙΟΣ.79", via "ΑΘΗΝΑΙ*7.ΜΑΙΟΣ.79" and "ΠΕΙΡΑΙΕΥΣ*7.ΜΑΙΟΣ.79", arr. "ΚΩΝΣΤΑΝΤΙΝ (ΤΟΥΡΚΙΑ)*11.ΜΑΙΟΣ.79". 30 lepta the UPU rate and 20l for the registration. A small part of flap miscut and wax-seals removed, still very fine and attractive. (Hellas 51d+50c).

C 100 €



- 274 Registered cover, boxed "ΣΥΣΤΗΜΕΝΟΝ" fr. with 5l green 1880/86 issue and 40l grey-bistre canc. "ΛΑΡΙΣΣΑ*15.ΙΑΝ.86", via "ΒΩΛΟΣ*16.ΙΑΝ.86", arr. "CONSTANTINOPLE TURQUIE*4.FEVR.86". 40 lepta stamp with traces of perforation. Very fine and rare. (Hellas 52a+55c).

C 250 €

1880/1886 Athens Printing



- 275 1l deep red-brown on yellowish in right marginal copy (paper thickness 6.6μ), canc. o 50 €
 "ΣΥΡΑ*31.OKT.82". Large/even margins all around. Superb. Scarce in this quality.
 (Hellas 53a).



- 276 1l red-brown in mint never hinged bl.40 (pos.1-40). Very fine and scarce. ** 300 €
 (Hellas 53c).



- 277 2l grey-bistre in right marginal copy, used. Very fine. (Hellas 54a). o 15 €



- 278 5l green (pos.50), double impression, one inverted, never issued, plate flaw thin circle, mint. Very fine. (Hellas 55cVbCF2). * 95 €



- 279 Payment receipt dated "30 Οκτωβρίου 1884", fr. with 5l green in pair used as fiscal. Doc 250 €
Very fine and rare. (Hellas 55c).



- 280 5l deep green in lower marginal copy, used. Superb. (Hellas 55d). o 16 €



- 281 10l orange-red, used. Large/even margins all around. Superb. (Hellas 56b). o 24 €



- 282 10l orange on yellow, intense yellow paper, canc. "ΖΑΡΚΟΣ*18.ΔΕΚΕ.82" (type IIa). Very fine for this. Scarce. (Hellas 56e). o 50 €



- 283 20l ultramarine, mint. Good/even margins all around, full gum. Certificate Holcombe (1986). Very fine. (Hellas 57a). * 120 €



- 284 20l ultramarine, used. Large/even margins margins all around. Superb. (Hellas 57a). o 45 €



285 40l light dull violet-brown in used pair (pos.1-2). Superb. (Hellas 58c).

o 14 €



286 40l light dull violet-brown in used bl.4 (pos.111-112/121-122), plate flaw open cross (pos.111). Very fine and scarce. (Hellas 58c).

o 100 €



287 20l carmine in left marginal copy, mint. Very fine. (Hellas 591a).

* 60 €



288 20l deep carmine in mint right marginal bl.4 with printers mark. Very fine and scarce. (Hellas 591b).

* 400 €



289 20l bright rosine (aniline) in mint vertical pair and in mint single copy, both printed on folded paper, very intense on the pair. Impressive. (Hellas 591a).

* 30 €



- 290 30l. grey-ultramarine in marginal strip of 4, good to large margins, used. Fine to very fine. (Hellas 60a). o 80 €



- 291 30l grey-ultramarine (pos.10R), plate flaw broken plate (in front of the nose), used. Very fine and scarce. (Hellas 60aFa). o 150 €



- 292 30l deep ultramarine in used bl.4. A tiny cut and a small crease at bottom, still fine for this rare used multiple. (Hellas 60c). o 500 €



293 30l deep ultramarine in mint pair. Large/even margins all around. Superb and scarce. (Hellas 60c). * 120 €



294 30l ultramarine, mint. Very fine. (Hellas 60d). * 55 €



295 Registered cover fr. with 30l brown and 10l yellow-orange in pair canc. "KEPKYPA*23.NOEM.81" to Palermo. Linear "CHARGE", via "BRINDISI*7.12.81" and "NAPOLI*8.12.81", arr. "PALERMO*9.12.81". Very fine. (Hellas 45b+56c). C 120 €



296 Registered cover fr. with 20l dull rosine in strip of 9 (pos.52-60), and 3x5l green (to pay 7 times the UPU rate plus registration fee), canc. "ΚΕΡΚΥΡΑ*26.ΑΠΡ.1884", via "CHAMBERY A MACON*11.MAI.84", arr. "PARIS*11.MAI.84". On reverse wax-seal complete. Cover miscut at lower left but rare. (Hellas 59IIB+55c).

C 300 €



297 Large cover from Ithaca to Alexandria, Egypt, fr. with 5x11 grey-brown (strip and pair) and 10l yellow-orange in pair canc. maritime "ΠΡΑΚΤΟΡ. ΑΤΜΟΠΛΟΙΑΣ ΑΙΓΑΙΟΥ P.M.C.& CO/EN ΙΘΑΚΗ", arr. "ALEXANDRIE*24.X.87". Very rare and impressive. (Hellas 53e+56c). C 800 €



298 Cover (envelope) mailed registered, linear "ΣΥΣΤΗΜΕΝΟΝ", fr. with 20l bright rosine and 30l slate blue, canc. "ΑΡΓΟΣΤΟΛΙΟΝ*28.ΜΑΙΟΣ.88", via "ΚΕΡΚΥΡΑ", "BRINDISI" and ambulante "MESSINA-PALERMO*14.GIU.88", arr. "PALERMO*15.GIU.88". 30 Lepta UPU rate and 20l for the registration. Wax-seals removed, still very fine and attractive. (Hellas 59IIa+60b). C 150 €



- 299 1889 cover franked with 2l. bistre in strip of 5, 10l. orange, 1l. brown & 5l. green (Hellas 33b+56d+73+74). Posted from "KEPKYPA*9 ΔΕΚΕ. 89" via "BRINDISI*28. 12. 89". and arr. "KIEL". VERY NICE LARGE AND SMALL HEADS MIXED COVER. C 600 €



- 300 Registered cover fr. with 2l. 1862/67 issue bistre in strip of 3 + 1l. brown in pair + 2l. bistre + 10l. mustard in pair + 2x25l. deep violet Small Hermes Heads, canc. "ΠΑΤΡΑΙ*17.ΝΟΕΜ", arr. "BRUNN STADT*3.12.95". A late use of 1862/67 2 lepta stamp. A very impressive mixed Large and Small Hermes Heads franking. (Hellas 16b+85+88+91+96). C 500 €

HARMONY

The golden sands between your toes;
the fragrant pine in the early morning breeze;
a serene waters-edge ambience;
and the feeling of nature and soul becoming one.

FEEL SANI



SANI
RESORT

KASSANDRA, GREECE | SANIRESORT.GR