

# WARRANTY CARD

**Planet Power®**  
*Global Expertise. Local Care*

**Planet Power Tools Pvt. Ltd.**

Name of Purchaser .....

Address : .....

Product **Drill / Screw Driver** .....

Model No **PSD 350VR** .....

Sl. No. ....

Date of Purchase .....

Invoice No. ....

Armature No .....

Dealers Stamp .....

Signature

## PSD 350VR Drill / Screw Driver **INDUSTRIAL**

### HANDLING INSTRUCTIONS



**ERGONOMIC  
DESIGN**



**ADJUST THE  
SPEED + REVERSE**

☐ Read, Understand Carefully & Follow These Instructions While Operating Tool.

**India's Leading Power Tool Brand**

Manufactured and Marketed by :

**PLANET POWER TOOLS PVT. LTD.**

GIDC Ind. Estate, P.O. Kabilpure, Navsari - 396424, Gujarat.

For Customer Care Number : (022) 4067 6105.

E\_mail : [mumbai@planetpowertools.com](mailto:mumbai@planetpowertools.com)

**Planet Power®**  
*Global Expertise. Local Care*

## WARRANTY

### **CONGRATULATIONS; YOU ARE NOW A PROUD MEMBER OF THE PLANET POWER PARIVAR**

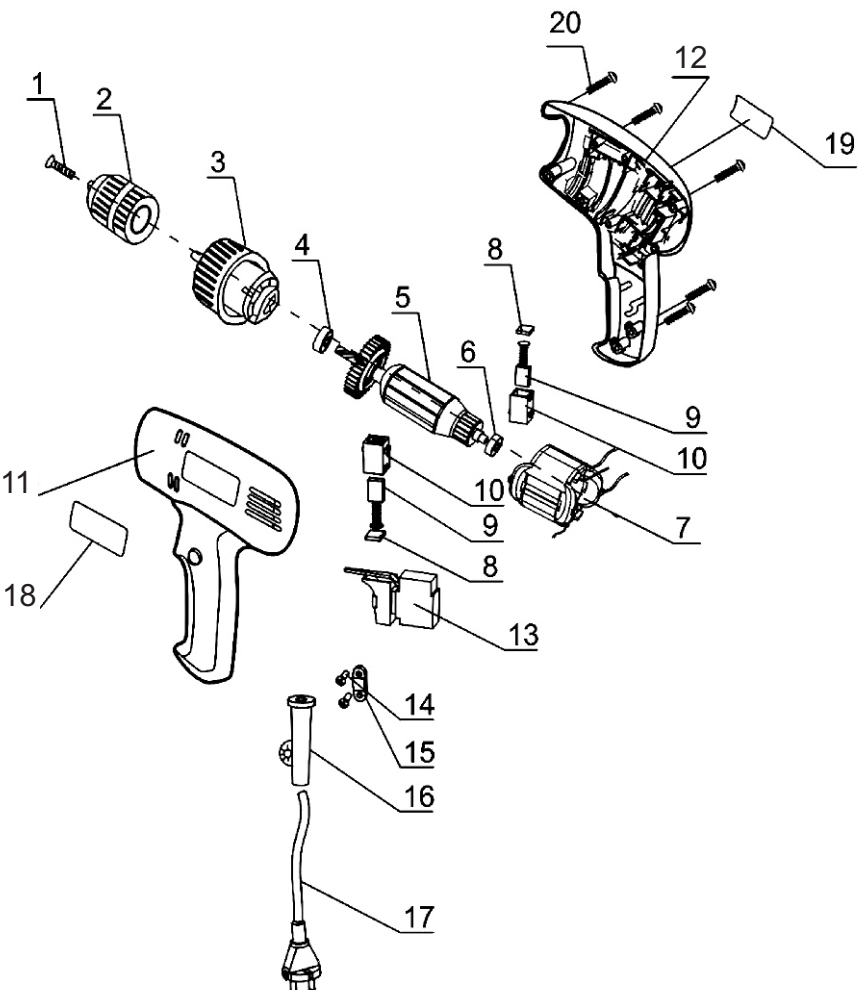
All the tools manufactured by Planet Power Tools Pvt Ltd undergo a series of rigorous inspection procedures ensuring that you only get a world class power tool.

All Products manufactured by Planet Power Tools Pvt. Ltd. are covered by an international warranty valid for six (6) months from the date of purchase. This comprehensive warranty® covers the parts as well any defects arising out of faulty manufacturing of the tool.

®The Warranty **DOES NOT** apply to:

- Components subject to normal wear and tear e.g. Carbon Brushes, Brush holders, plug and cord assembly, drill chucks, bearings, flanges etc.
- Unless expressly stated; any and all attachments supplied with the tool.
- Unauthorised repairs, alterations and modifications.
- Damage caused due to dust, slurry, and any foreign objects as well as due to improper use or an accident
- Damage due to voltage fluctuations

## PSD 350VR



## GENERAL OPERATIONAL PRECAUTIONS

### I DON'T USE / EXPOSE

- a) In presence of flammable liquids or gases.
- b) To the rain.
- c) If switch does not turn if ON and OFF.
- d) Solvents such as Thinner, Gasoline, Benzene, Alcohol, Ammonia, etc. for wiping / cleaning the plastic parts or accessories.

### II USE

- a) Proper voltage power source, according to the specification.
- b) Extension Cords which are intended for outdoors, during outdoor use.
- c) Clamps or vise to hold work,
- d) Safety glasses.
- e) Protective hair covering.
- f) Wear Non-skid rubber footwear.

### III. CHECK / ENSURE

- a) Power switch is in OFF position, prior to operation.
  - b) The motor winding does not become damaged / wet with oil or water.
  - c) **Regularly inspect all mounting screws and ensure they are properly tightened.**
  - d) Alignment of moving parts.
  - e) Binding of moving parts.
  - f) Breakage of mountings.
  - h) **The Carbon Brush wear limit.**
- 
- 1. **Never carry tool by cord.**
  - 2. Power tools should be stored in cool and dry area.
  - 3. Inspect tool cords / extension cords periodically.
  - 4. **Start drilling / polishing operation when full speed has been reached.**
  - 5. Do not touch movable parts or accessories, unless the power source has been disconnected.
  - 6. Follow instructions for lubricating and changing accessories.
  - 7. Disconnect tools when servicing and changing accessories.
  - 8. **Remove adjusting keys, wrenches before turning it ON.**
  - 9. Always take care in preventing the power cord from coming in contact with revolving chuck.
  - 10. Keep children away, during operation.

## PART LIST

ITEM NO.	DESCRIPTION
1	Screw M4x16 Left
2	Keyless Chuck
3	Gear Box Assly
4	Bearing 608
5	Armature
6	Bearing 626
7	Stator
8	Carbon Cap
9	Carbon Brush
10	Brush Holder
11	Housing Left
12	Housing Right
13	Switch
14	Cord Clip
15	Screw St4x14
16	Cord Arm
17	Cord
18	Brand Sticker
19	Name Plate
20	Screw St3x16

## Technical Data

<b>Model</b>	<b>PSD 350VR</b>
<b>Voltage</b>	<b>230 V~</b>
<b>Input Power</b>	<b>350 W</b>
<b>Capacity</b>	<b>10mm</b>
<b>No Load Speed</b>	<b>0-750 RPM</b>
<b>Weight</b>	<b>1.25 Kg.</b>



### PRECAUTIONS ON USING ELECTRIC DRILL

- 1 Operate the Planet Drill safely for correct use
- 2 Do not make side handle and hold the drill firmly when using
- 3 Do not make this drill work beyond the ability
- 4 Never touch moving parts such as drill bits & polisher
- 5 Never let the drill alone in the rotating conditions
- 6 Avoid letting the revolution down largely by means of pressing it by force
- 7 Take care of downward direction in the high position

### APPLICATION

Drilling holes on various metal lumber and plastics.

### MAINTENANCE AND INSPECTION

Caution Be sure to switch OFF and disconnect the plug during maintenance and inspection

1. Inspecting tightness of various screws  
Periodically inspect each screw tightness of individual components. If any screws are loosened, securely retighten them. Loosened screws use a hazardous situation.
2. Maintenance of the motor  
The winding part of the motor unit is the very "heart" of this device. Exercise due care that this part is not scarred or smeared with oil.
3. Keeping after use.  
When not in use, the Electric Drill should be kept in a dry out of the reach of children.
4. Inspecting the carbon brushes  
The motor employs carbon brushes as expendable components  
If the brushes are worn, motor trouble may result when brushes are worn down to the limit line, replace them with new brushes.  
Also keep the carbon brushes clean, so that they can smoothly slide into the brush holders.  
When replacing carbon brushes with new brushes, be sure to use those Planet Drill Type corresponding to the illustrated number (17)

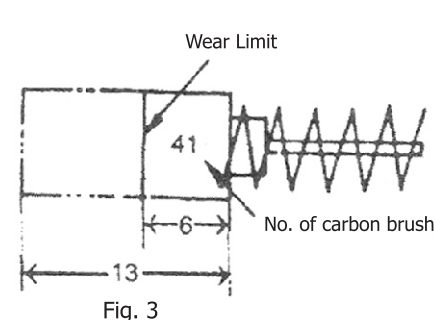


Fig. 3

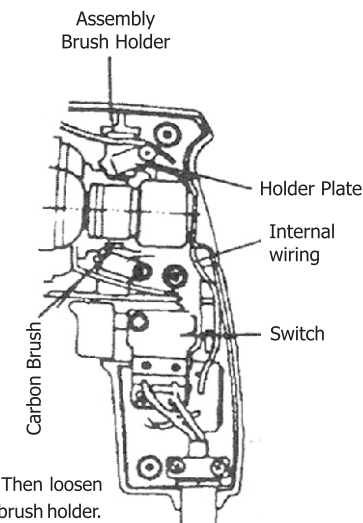


Fig. 4

### REPLACING CARBON BRUSHES (See Fig. 4)

#### Disassembly

1. Loosen three machine screws and remove the handle cover. Then loosen the machine screws to remove the holder piece which fixed the brush holder.
2. Pull out the brush holder together with the carbon brushes. Exercise adequate care not to excessively strain the lead wire or damage it.
3. Remove the carbon brushes from the brush holder.

1. Insert new carbon brushes in the brush holder, insert the brush holder together with carbon brushes into the brush holder chamber in housing. Then fix the brush holder with holder piece.
2. Carefully ascertain that the internal wiring and so on are located at their regular positions and that there is no possibility of the rotary part wiring (armature) being contacted by the internal wiring or other items
3. Reinstall the handle cover while exercising adequate care not to allow the internal wiring and so on to become caught in the housing, then tighten the cover with three machine screw.

#### Cautions

When reassembling after replacing the carbon brushes, be sure to follow this assembling procedure. Should the internal wiring and so on contact the rotary part (armature) or be caught in the handle cover, there is a great risk of the user receiving an electric shock.

Exercise the utmost care.

When replacing the carbon brushes do not tamper with parts other than those necessary for replacing.

### HOW TO USE THE ELECTRIC DRILL

3. Operation of switch  
Pulling the trigger of switch and push the stopper, it keeps, the switched-on condition and it is convenient for the continuous running.  
When switched off, the stopper can be disconnected by means of pulling the trigger again.