

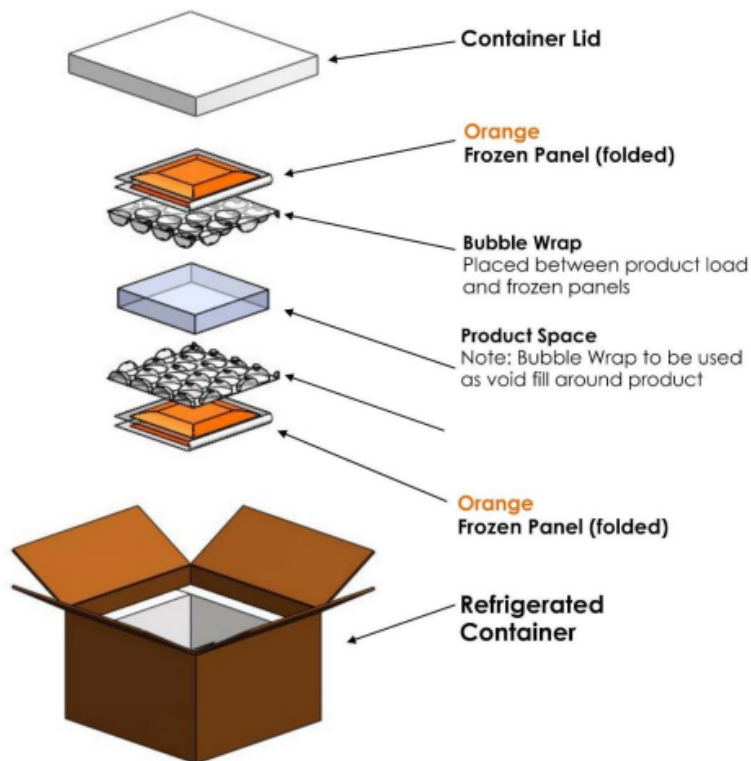


REFRIGERATED PRODUCT PREPARATION / SPECIAL HANDLING

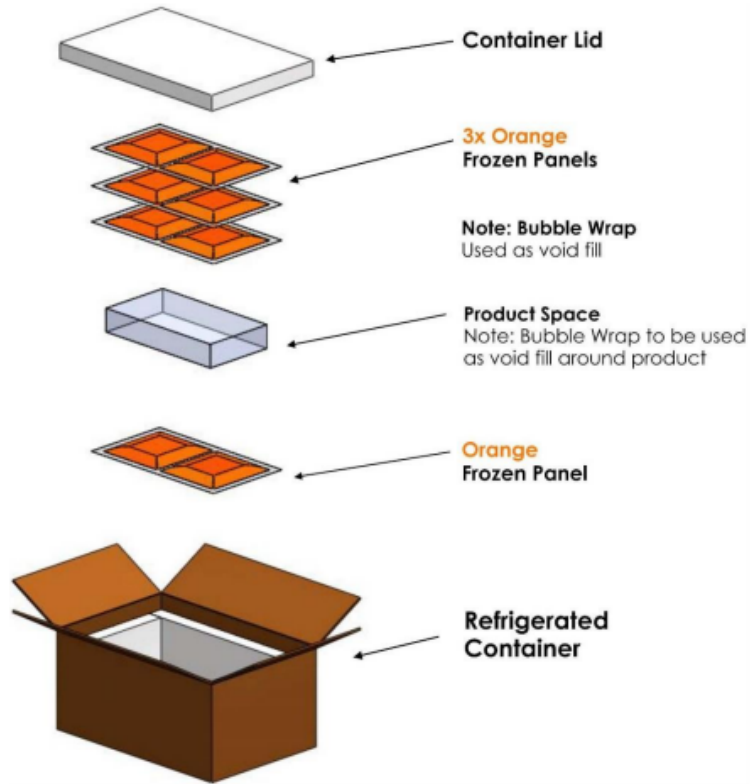
Due to Hot Temperatures- Ice panels must be frozen to ensure the integrity of the product

1. Refrigerated products capable of fitting in an isolated tote must be returned following the below procedure:
 - a. Condition each orange phase change panel in a freezer until solid. This process takes approximately 24 hours.
 - b. Place the product in a plastic bag or in plastic bubble wrap to block or absorb moisture and/or to protect from condensation, breakage or shifting during transport.
 - c. Package a product into the refrigerated box using instructions below:

CONTROLLED COLD SMALL BOX CONFIGURATION



CONTROLLED COLD MEDIUM BOX CONFIGURATION



CONTROLLED COLD LARGE BOX CONFIGURATION

