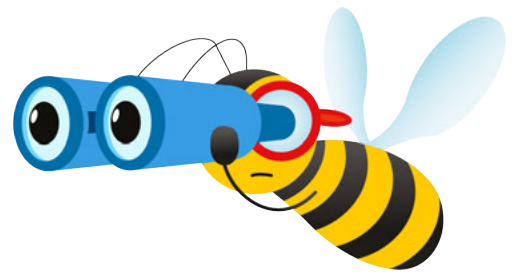
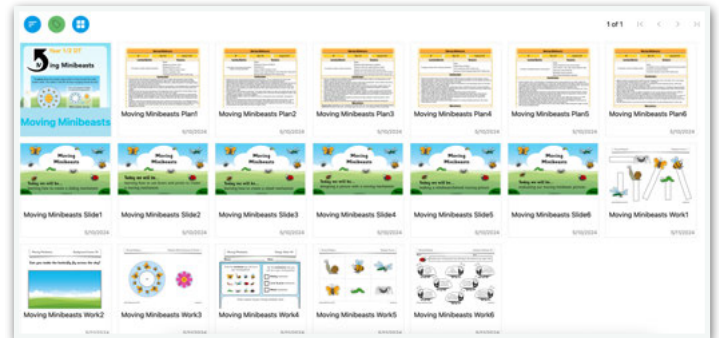


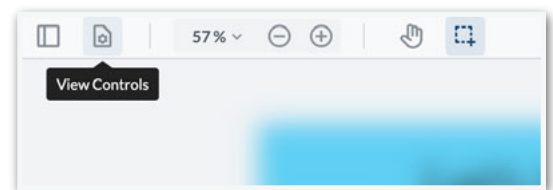
How to... view resources in full screen



Click on the resource you would like to view in the PlanBee portal.

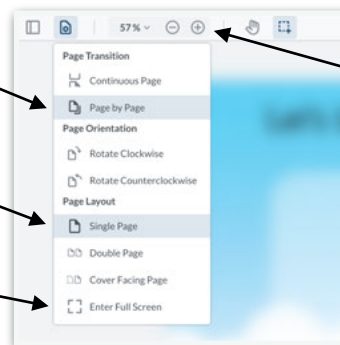


In the top left corner, click 'View Controls'.



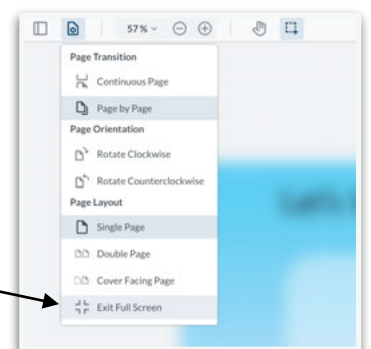
Make sure 'Page by Page' and 'Single Page' are selected.

Then click 'Enter Full Screen'.



Use the Zoom controls to ensure the resource best fits your screen.

Exit full screen by either clicking the 'escape' / 'esc' button or clicking 'Exit Full Screen'.



[Click here](#) to see a video showing you **how to view resources in full screen**.

[Click here](#) for more information about **how a PlanBee subscription works**.