

PT Muara Sungai Landak

Pontianak Regency, West Kalimantan province

GREENPEACE

www.greenpeace.org

Greenpeace International Press Desk pressdesk.int@greenpeace.org

Location map of PT. Muara Sungai Landak



Source :

1. Concession boundary : MoFor (2014) Ministerial Decree SK 5984/Menhut-VI/BRPUK/2014, Ministry of Forestry, Indonesia, November 2014, <http://www.dephut.go.id/index.php/news/details/9671>
2. Administratif boundary : Geospatial Information Agency (got from REDD Task Force)

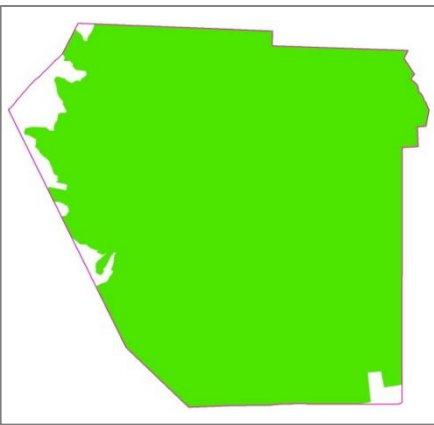
Landcover change 2013 - 2017

 Boundary of PT. MSL, total concession area is 13114.22 ha

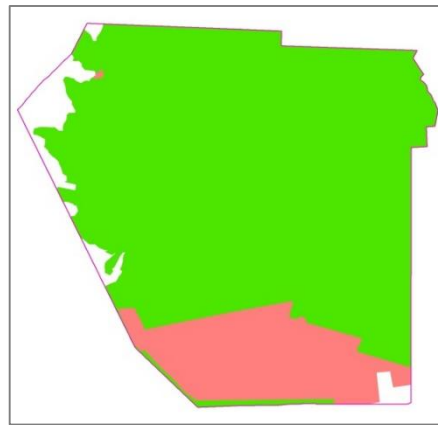
 Forest

 Deforestation

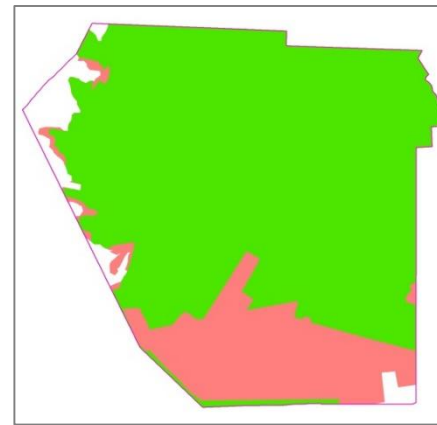
The complete concession is located on peat soils



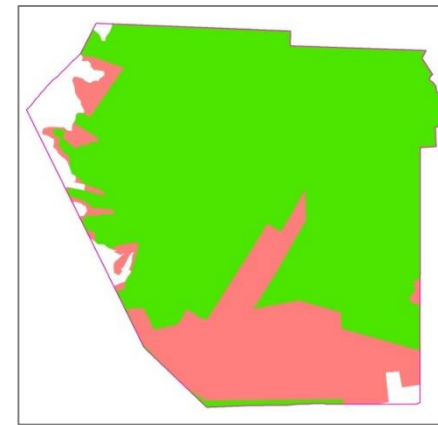
2013



2015



2016



2017

Forest cover area from 2013 - 2017

Forest Cover	Hectare (ha)	percentage from total area concession (%)
2013	12,550.59	95.70
2015	10,566.82	80.58
2016	10,142.35	77.34
2017	9,748.07	74.33

Deforestation area from 2013 - 2017

Deforestation	Hectare (ha)	percentage from total area concession (%)
2013 - 2015	1,983.50	15.12
2015 - 2016	427.12	3.26
2016 - 2017	541.59	4.13

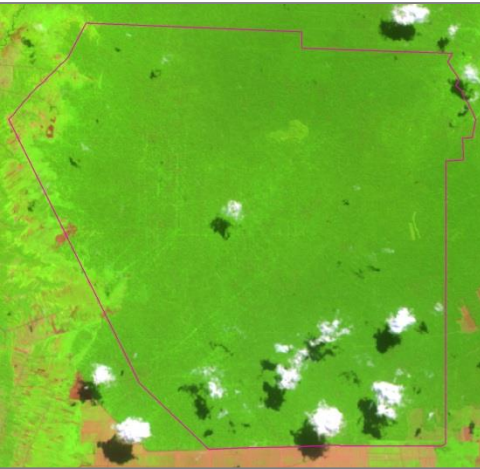
Calculation of area is using projection system from Ministerial of Environmental and Forestry :
World Mercator, with modifying central meridian 116 and standard paralel -2

Source :

1. Forest cover 2013 : Ministerial of Forestry 2013, downloaded from <http://nfms.dephut.go.id/ArcGIS/rest/services>
2. Forest cover 2015 : Ministerial of Forestry 2015, downloaded from [http://webgis.dephut.go.id/ArcGIS/rest/services/](http://webgis.dephut.go.id/ArcGIS/rest/services/Penutupan_Lahan_2015/MapServer/)Penutupan_Lahan_2015/MapServer/
3. Forest cover 2016 : Ministerial of Environmental and Forestry 2016, Download from <http://geoportal.menlhk.go.id/arcgis/rest/services>
4. Forest cover 2017 : Ministerial of Environmental and Forestry 2017, Download from <http://geoportal.menlhk.go.id/arcgis/rest/services>

Landsat imagery of PT. Muara Sungai Landak

 Boundary of PT. MSL



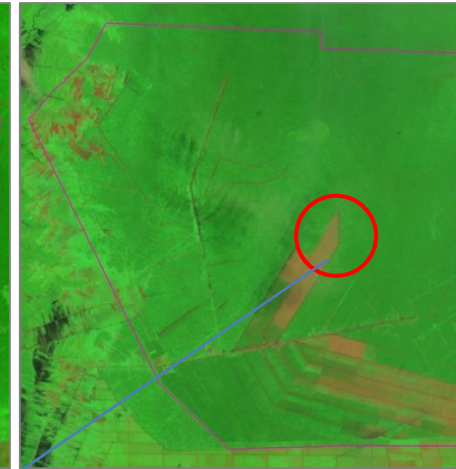
Landsat 8, 15 June 2013



Landsat 8, 23 July 2015



Landsat 8, 27 Sept 2016



Landsat 8, 28 Sept 2017

Indicating large scale deforestation for plantation preparation