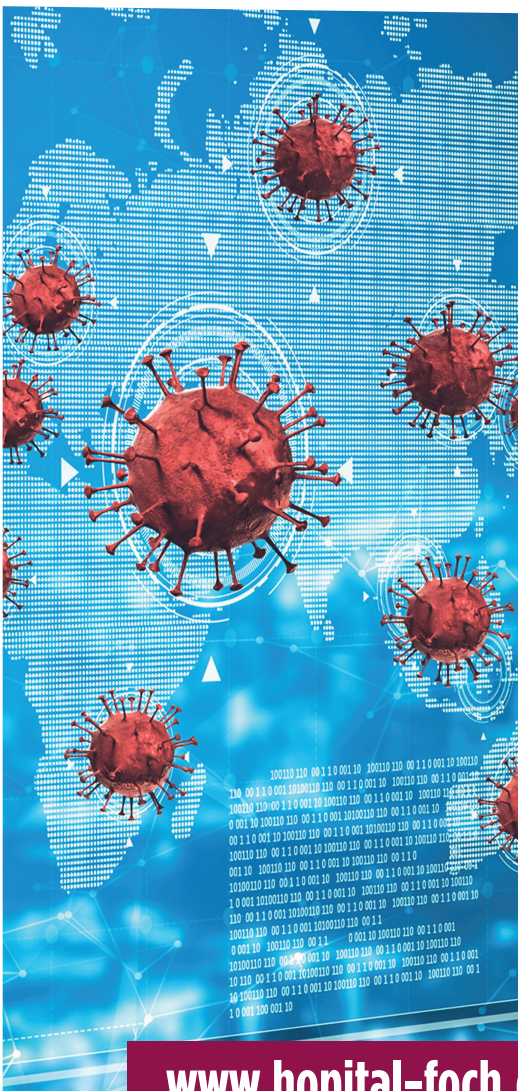


# COVID-19 MASTER CLASS



Online or On-site depending on  
the evolution of the pandemic



[www.hopital-foch.com](http://www.hopital-foch.com)

Hôpital Foch  
92150 Suresnes  
France



## About Foch Hospital (Hôpital Foch):

With 2,000 staff members (including 300 doctors) and 600 beds, Foch Hospital is one of the most effective and renowned non-profit university hospitals with a public service mission in France.

Foch Hospital indeed provides a wide range of treatments to adult patients in almost all of the medical and surgical domains and commits to education and research, while paying crucial attention to patient care, including through the investment in cutting-edge medical technology.

## Foch Hospital and COVID-19 management:

Foch Hospital has been very involved in the management of COVID-19 from the outset of the pandemic in France and dedicated up to 150 beds to patients suffering COVID-19 during the peak of the crisis.

This mobilisation strengthened the collaboration between the different medical departments and categories of staff of the Hospital and increased its capacity to adapt to unprecedented situations, leading to a high reactivity.

Through this master class, Foch Hospital's experts who were the most involved in the management of COVID-19 will share their lessons learnt both on management and medical levels.

## Training at Foch Hospital is covered by:

**1 nursing school with 60 students per promotion**

**1 midwifery school with 28 students per class**

**1 continuing education institute, "Foch Santé Formation"**

**1 simulation platform of 600 m2**



**50% of ward heads at Foch Hospital who are also University professors**

# Epidemiology and Virology Basics

## Outpatients and non ICU patients

1



## GOALS

- To know SARS-COV2 virologic characteristics and pathology for clinical practice
- To understand the main epidemiologic principles concerning SARS-COV2 pandemic
- To master the nosocomial risk of infection and the caregivers safety
- To understand and to know how use the laboratory tests for COVID diagnosis
- To know the different COVID clinical presentations and differential diagnosis
- To know the severity and hospitalization criteria
- To know how to manage treatment in out- and non ICU inpatients
- To know the results and limits of the main clinical trials concerning medical treatment.





# PROGRAMME

1






## Module 1 Basic concepts





3h00



## Module 2 General management

2h15

Virologic basic concepts	2h
SARS-COV2 pathology and immunologic considerations	
Basics in SARS-COV2 epidemiology	
Laboratory tests	
SARS-COV2 nosocomial infection control and caregivers safety	
 <b>Speakers</b>   Biologists: Pr M. VASSE / Dr Eric FARFOUR Hygienist: Dr Marion LECURU	
Clinical diagnosis	40 min
 <b>Speakers</b>   Internists: Dr Felix ACKERMANN / Dr Matthieu GROH	
Radiologic diagnosis	20 min
 <b>Speaker</b>   Radiologist: Dr Anne Laure BRUN	

COVID lung disease specificity	30 min
Thrombo-embolic pathology	
 <b>Speaker</b>   Pulmonologist: Dr Colas TCHERAKIAN	
Severity and hospitalization criteria	15 min
 <b>Speaker</b>   Emergency doctor : Dr Marie BALLESTER	
Symptomatic management	1h
Immunomodulation in COVID	
Anti-infectious treatments	
 <b>Speakers</b>   Internists: Dr Felix ACKERMANN / Dr Matthieu GROH	
Outpatients management	15 min
 <b>Speaker</b>   Emergency doctor : Dr Marie BALLESTER	

# Epidemiology and Virology Basics

## Severe and ICU patients

2



## GOALS

- To know SARS-COV2 virologic characteristics and pathology of COVID for clinical practice
- To understand the main epidemiologic principles concerning SARS-COV2 pandemic
- To understand and to know how use the laboratory tests for COVID diagnosis
- To master the nosocomial risk of infection and the caregivers safety
- To know the different COVID clinical presentations and differential diagnosis
- To know the prognostic ICU admission criteria
- To describe the pathology and specificity of COVID organs injuries
- To manage oxygenation strategy in COVID respiratory failure
- To manage ventilator in COVID ARDS
- To manage hemodynamic failure in COVID ICU patients
- To know the results and limits of the main clinical trials concerning medical treatment





# PROGRAMME

2






## Module 1 Basic concepts



3h00



## Module 2 ICU management

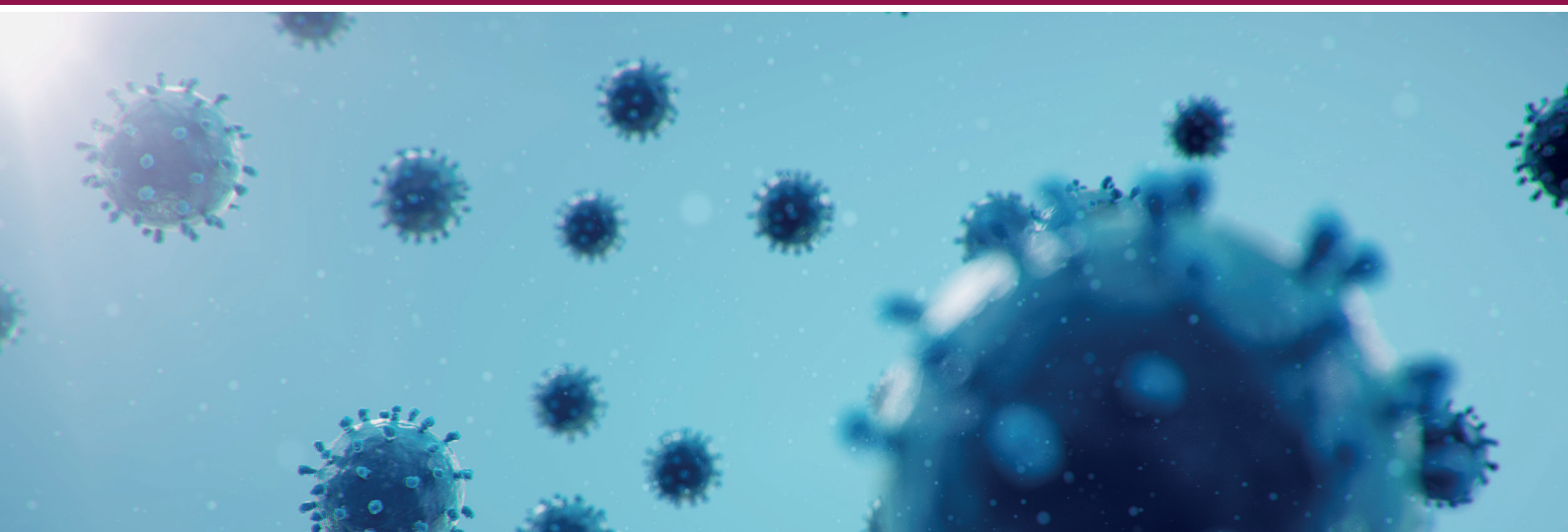
3h00

Virologic basic concepts	2h
SARS-COV2 pathology and immunologic considerations	
Basics in SARS-COV2 epidemiology	
Laboratory tests	
SARS-COV2 nosocomial infection control and caregivers safety	
 <b>Speakers</b>   Biologists: Pr M. VASSE / Dr Eric FARFOUR Hygienist: Dr Marion LECURU	
Clinical diagnosis	40 min
 <b>Speakers</b>   Internists: Dr Felix ACKERMANN / Dr Matthieu GROH	
Radiologic diagnosis	20 min
 <b>Speaker</b>   Radiologist: Dr Anne Laure BRUN	

COVID lung disease specificity	30 min
Thrombo-embolic pathology	
 <b>Speaker</b>   Pulmonologist: Dr Colas TCHERAKIAN	
Non pulmonary organs injuries	2h30
General management	
Oxygenation strategy	
Ventilation strategy	
Hemodynamic failure	
Immunomodulation in severe COVID	
Anti-infectious treatments in ICU	
COVID ICU patients prognosis	
 <b>Speakers</b>   Intensivists: Dr Charles CERF / Dr Mathilde NEUVILLE	



**Price per participant per session, i.e. for 2 modules : 650 euros**



40, rue Worth  
BP36 - 92151 Suresnes, France  
[www.hopital-foch.com](http://www.hopital-foch.com)



Manon LEROY  
T. +33 (0)1 46 25 36 13  
[m.leroy@hopital-foch.com](mailto:m.leroy@hopital-foch.com)