

**TYPICAL SPECIFICATION:**

Please note that the construction details shown are an indication of typical construction only and may vary to suite actual site conditions and environments.

**Fabufill Polyester Insulation:**

Thermally Bonded Polyester Insulation

Platinum Fibre's Fabufill polyester insulation is a versatile, easy to install, flexible, strong, lightweight blanket and is manufactured from recycled PET (polyethylene terephthalate) plastic bottles. Produced in a range of different thicknesses to provide a myriad of thermal and acoustic performances. This non-allergenic, non-irritant and resilient insulation does not support the spread of flame, (Class B/B1/2 fire rating).

Platinum Fibre is the only manufacturer of polyester insulation in the marketplace with the SABS mark.

Used in roofs, ceilings, partitions and walls and is manufactured in widths to suit standard spacings of studs, ceiling and floor joists.

**SABS mark:** SABS approved to SANS 1381-1:2013 Materials for Thermal Insulation of Buildings | Part 1: Fibre Thermal Insulation Mats. Permit Number: 9486/15037.

**Fibre Composition:** 80% recycled PET (locally sourced) & 20% virgin LMF.

**Fire:** B/B1/2/H (determined in accordance with SANS 428 and SANS 10177-10) Non-Flammable. Will not contribute to the spreading of flame and will self-extinguish when a heat source is removed.

**Combustibility Data:** Combustible at over 750 degrees (determined in accordance with SANS 10177-5).

**Ignition Properties:** Tested according to SANS 10177-6

**Ozone depleting substances:** Does not contain and did not produce any during production. No VOC's are used during the production of this material.

**Recycling:** 1 ton of Fabufill's polyester insulation is manufactured from approximately 38 000 recycled bottles.

The plastic bags used for transporting the material are made from virgin LDPE material and is 100% recyclable, Grade 4. The inks used in the packaging are food grade.

**Corrosion Resistance:** Fabufill does not physically deteriorate over time and does not require any maintenance. Properties are such that the material will not be damaged during normal handling and installations. Tested according to ASTM.C 665

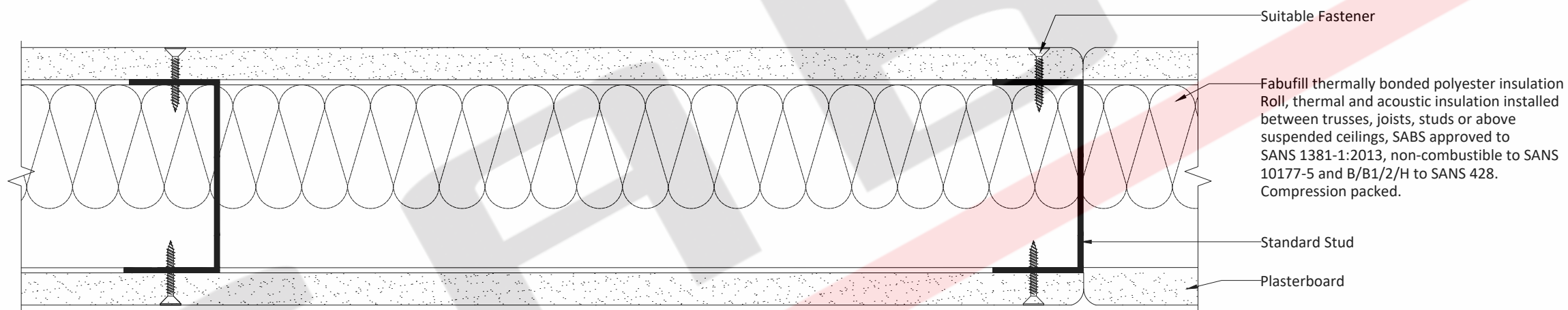
**Fungal Attack:** Fabufill has good resistance to bacteria, fungi and mildew. Fibre-devouring insects will not damage Fabufill polyester insulation since it is indigestible (tested in accordance with SANS 5484.)

**Moisture Absorption:** 0.78% (SANS 1381-1:2013 allows up to 2%)

**Odourless:** Tested according to ASTM.C 1304

**Water Vapour:** Tested according to ASTM E 96

Available Thicknesses are from 40mm to 135mm



Sectioned plan view

Scale 1:2



**Platinum Fibre (PTY) Ltd**

Address: 17 Lincoln Road, Benoni, Johannesburg, Guateng

Email: info@platinumfibre.com

Visit: www.platinumfibre.com

Tel: 011 421 0933

**GENERAL NOTES:**

- 1). All dimensions shown on this drawing are in millimetres (mm) and are nominal unless marked.
- 2). Isolate all interfaces between dissimilar materials.

SCALE: 1:2  
PAPER SIZE: A3

REV.	INITIALS	DATE	DESCRIPTION
DRAWING TITLE:			PROJECT NAME:
TYPICAL SECTION OF THE INSULATION IN A SINGLE LAYER PARTITION Page 1 of 2			STANDARD INSULATION DETAILS