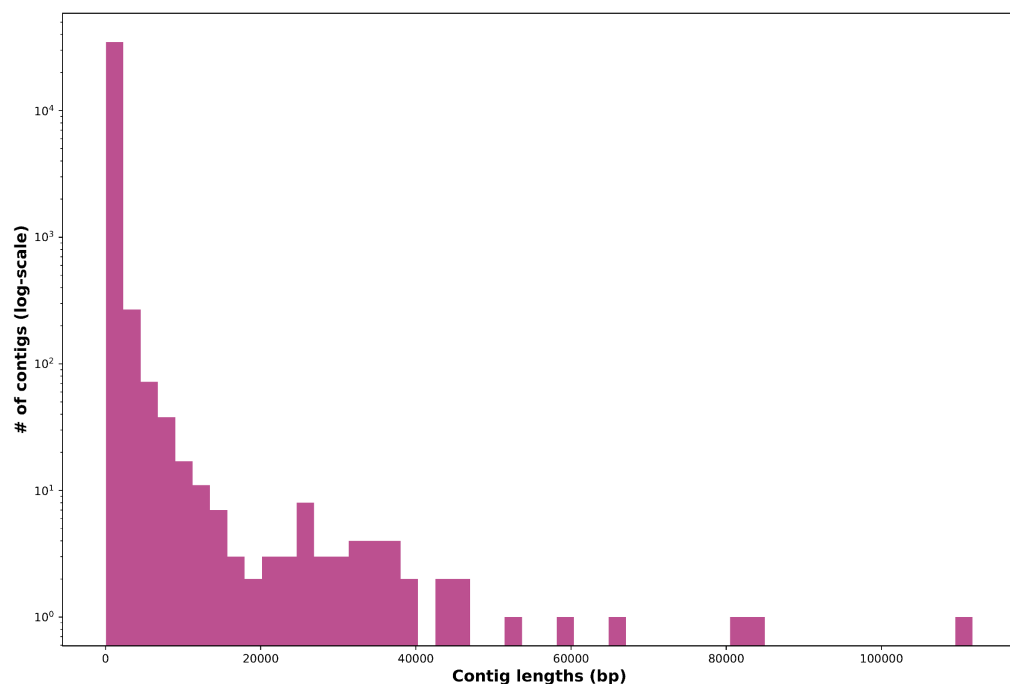


## Supplement S3 - Supplementary information for: PlasClass improves plasmid sequence classification

### S3 Plasmidome sample

Fig S1 presents the distribution of contig lengths in the assembly graph of the wastewater plasmidome sample ERR1538272 from the study by Shi et al. [1].

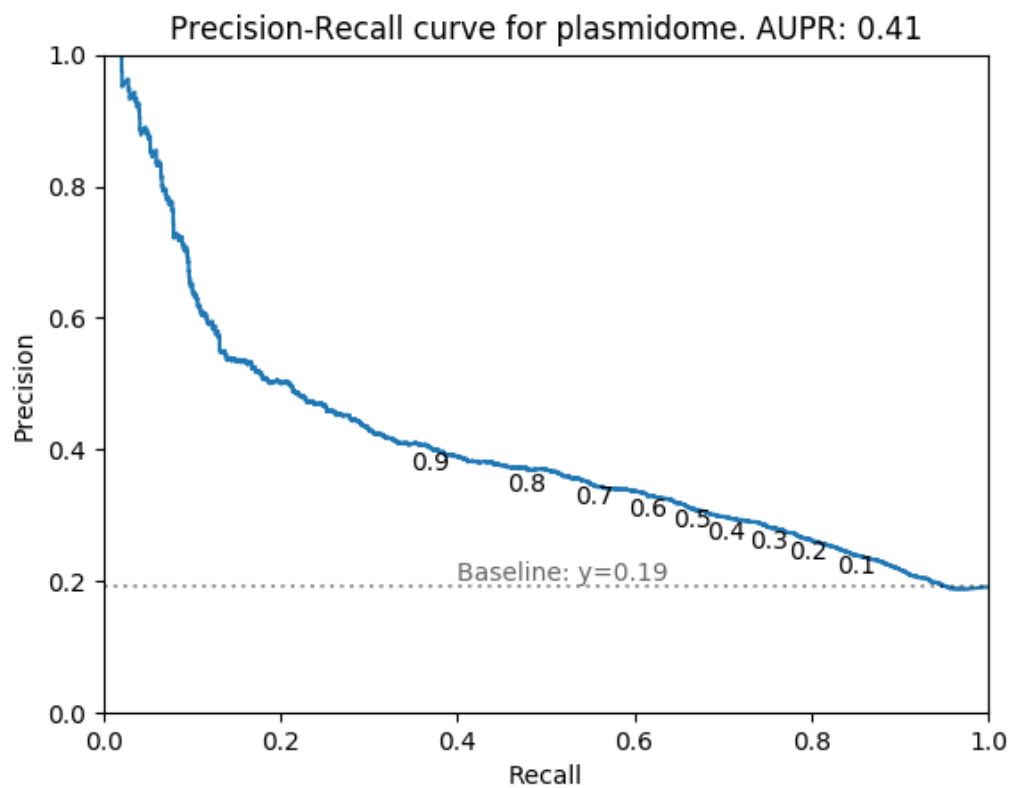


**Fig S1. Contig lengths.** Histogram of the contig lengths in the plasmidome assembly. Note that the y-axis uses log-scale.

Fig S2 presents the precision-recall curve for the classification of the plasmidome sample by PlasClass. The area under the precision-recall curve is AUPR=0.41. The baseline given the class imbalance is 0.19.

### References

1. Shi Y, Zhang H, Tian Z, Yang M, Zhang Y. Characteristics of ARG-carrying plasmidome in the cultivable microbial community from wastewater treatment system under high oxytetracycline concentration. *Applied microbiology and biotechnology*. 2018;102(4):1847–1858.



**Fig S2. Precision-recall curve.** Precision-recall curve for the classification of contigs of in the plasmidome sample.