

An expert judgment model to predict early stages of the COVID-19 pandemic in the United States

Thomas McAndrew ^{1*}, Nicholas G. Reich ²

¹ College of Health, Lehigh University, Bethlehem, PA, 18015, USA

² Department of Biostatistics and Epidemiology, University of Massachusetts Amherst School of Public Health and Health Sciences, Amherst, MA, 01003, USA

* mcandrew@lehigh.edu

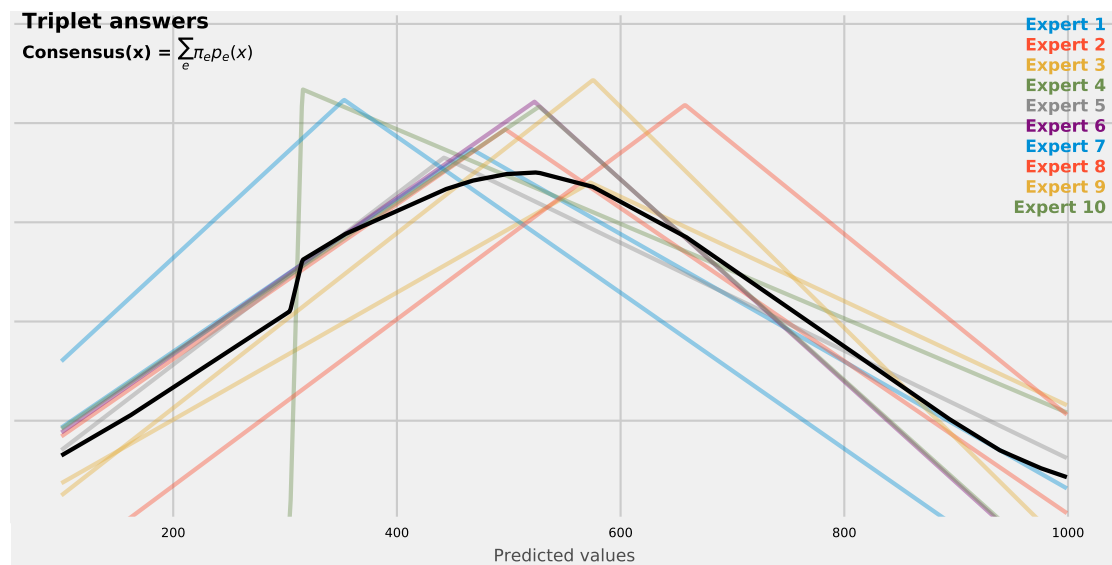


Fig 3. An example of 10 expert answers to a triplet question, their corresponding triangular probability distributions (TPDs), and an equally-weighted linear pool (black) built from those TPDs.