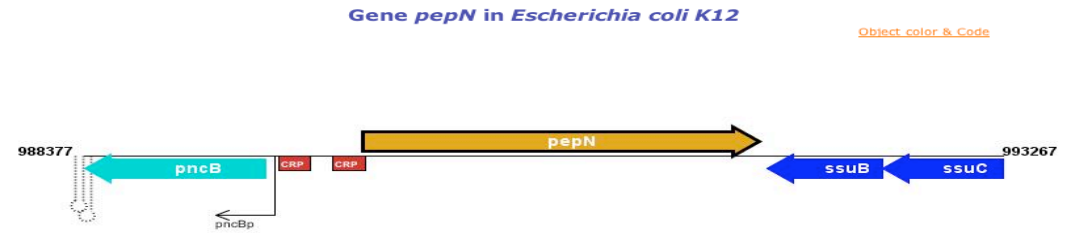
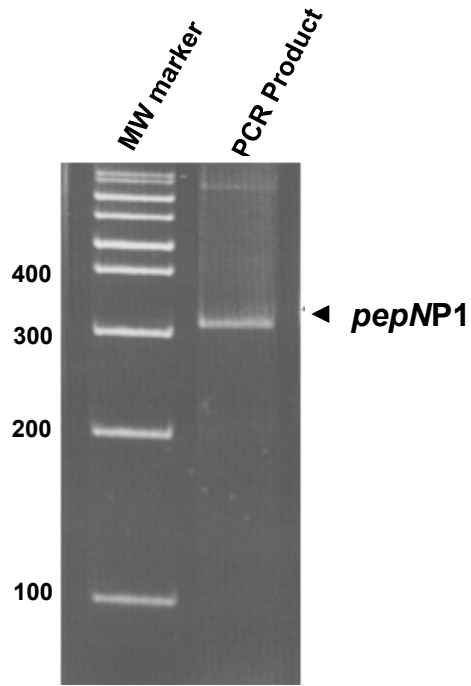


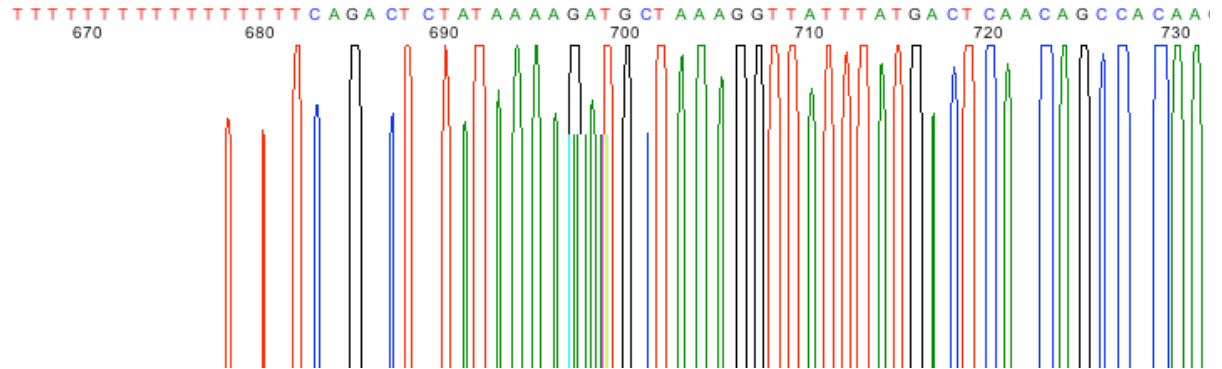
Figure S2

a) b3677 *pepN*, Aminopeptidase N



The TSS of the *pepN* gene has not been reported.

*pepNP1*



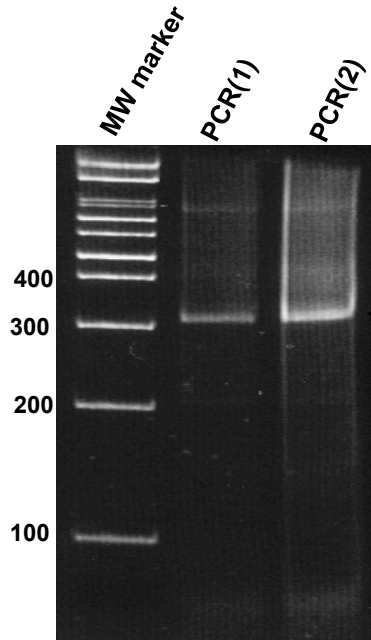
Sequence of the PCR product

Seq-PCR	-----	TTTTTTTTTTTTTTTTTTTTTTT	CAGACTCTATAAAAAGATGCTAAAGGTTATTTATGACTCAACAC	-----
Genomic_seq		TAGCGCGATTTACGCAACAGGAATAGACTGAACACCAGACTCTATAAAAAGATGCTAAAGGTTATTTATGACTCAACAC		
pepN_ORF		-----	-----	ATGACTCAACAC
ruler	...440.....450.....460.....470.....480.....490.....500.....510..			

Start codon

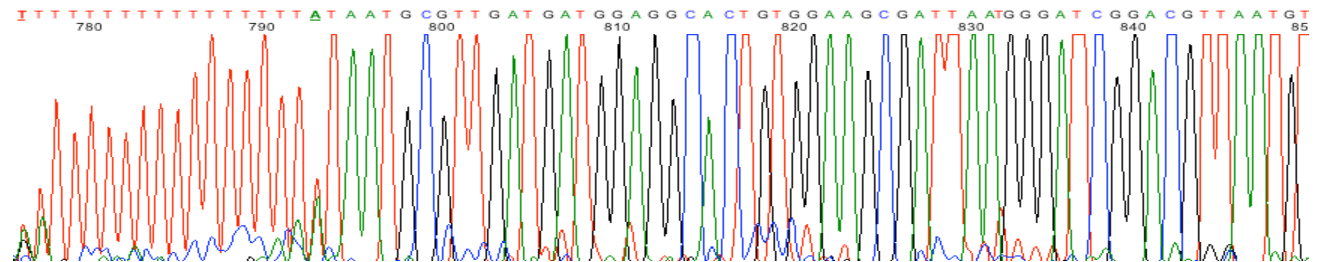
Figure S2a

b) b1342 *ydaN*, predicted Zn(II) transporter



The TSS of the *ydaN* gene has not been reported

*ydaNP1*

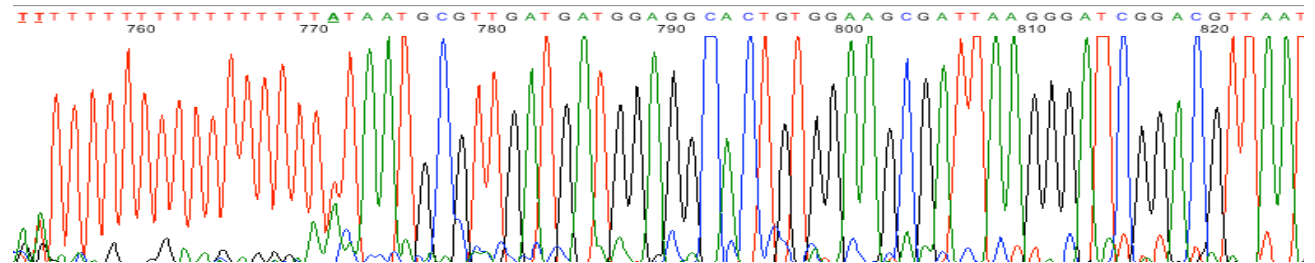


Two independent experiments produced the same results.

Sequence of PCR(1)

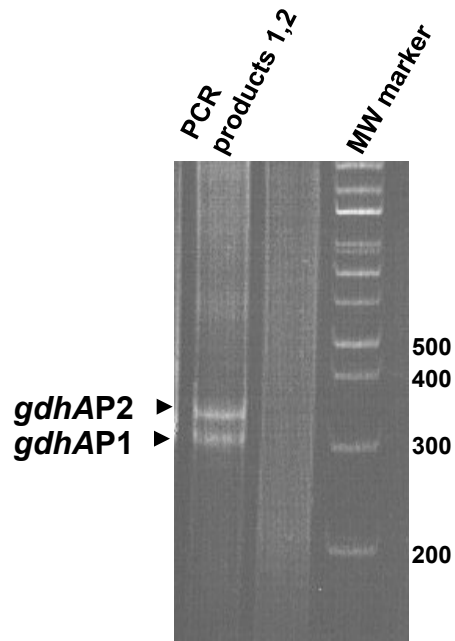
Seq-PCR_1	-----	TTTTTTTTTTTTTTTTTTT	AATGCGTTGATGATGGAGGCAC	TGTGGAAGCGATT	AAGGGATCGGACGTTAA
Genomic-seq	-----	CCGTAACAGGGCCAGAAGGCTAGACT	TACAAAATAATGCGTTGATGATGGAGGCAC	TGTGGAAGCGATT	AAGGGATCGGACGTTAA
Seq-PCR_2	-----	TTTTTTTTTTTTTTTTTTT	AATGCGTTGATGATGGAGGCAC	TGTGGAAGCGATT	AAGGGATCGGACGTTAA
<i>ydaN</i> -ORF	-----			GTGGAAGCGATT	AAGGGATCGGACGTTAA
ruler	...	450.....460.....470.....480.....490.....500.....510.....520.....53			

Start codon



Sequence of PCR(2)

c) b3300 *gdhA* Glutamate dehydrogenase

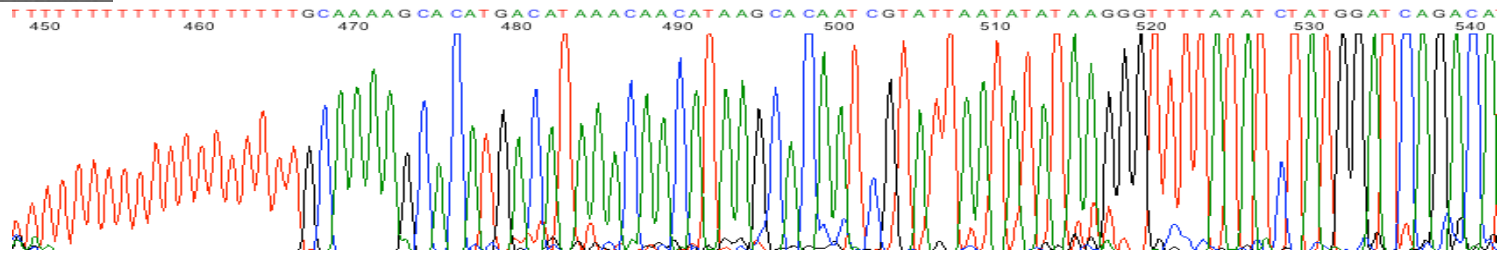


The TSS of the *gdhA* gene is identical to the previously reported.

Name:	<i>gdhA</i>
+1:	1840331
Sigma Factor:	Sigma70
Sequence:	gctttcctgggtcatttttctgctaccgctcacattctgatggtatagtcgaaaacTgcaaaagc
Reference(s):	[1] Riba L., 1988

*gdhAP2*

*gdhAP1*



PCR 2 ----- TTTTTTTTTTTTTTTTGCAAAAGCACATGACATAAACCAACATAAGCACAAATCGTATTAATATAAAGGGTTTTATAATCTATGGATCAGACATA

Genomic\_seq CACATTCCTTGATGGTATAGTCGAAAACGCAAAGCACATGACATAAACCAACATAAGCACAAATCGTATTAATATAAAGGGTTTTATAATCTATGGATCAGACATA

gdhA-ORF ----- ATGGATCAGACATA

PCR 1 ----- TTTTTTTTTTTTTTTTGGTTTTATAATCTATGGATCAGACATA

ruler 0.....420.....430.....440.....450.....460.....470.....480.....490.....500.....510....

*gdhAP1*

Start codon

Sequence of PCR product 1

