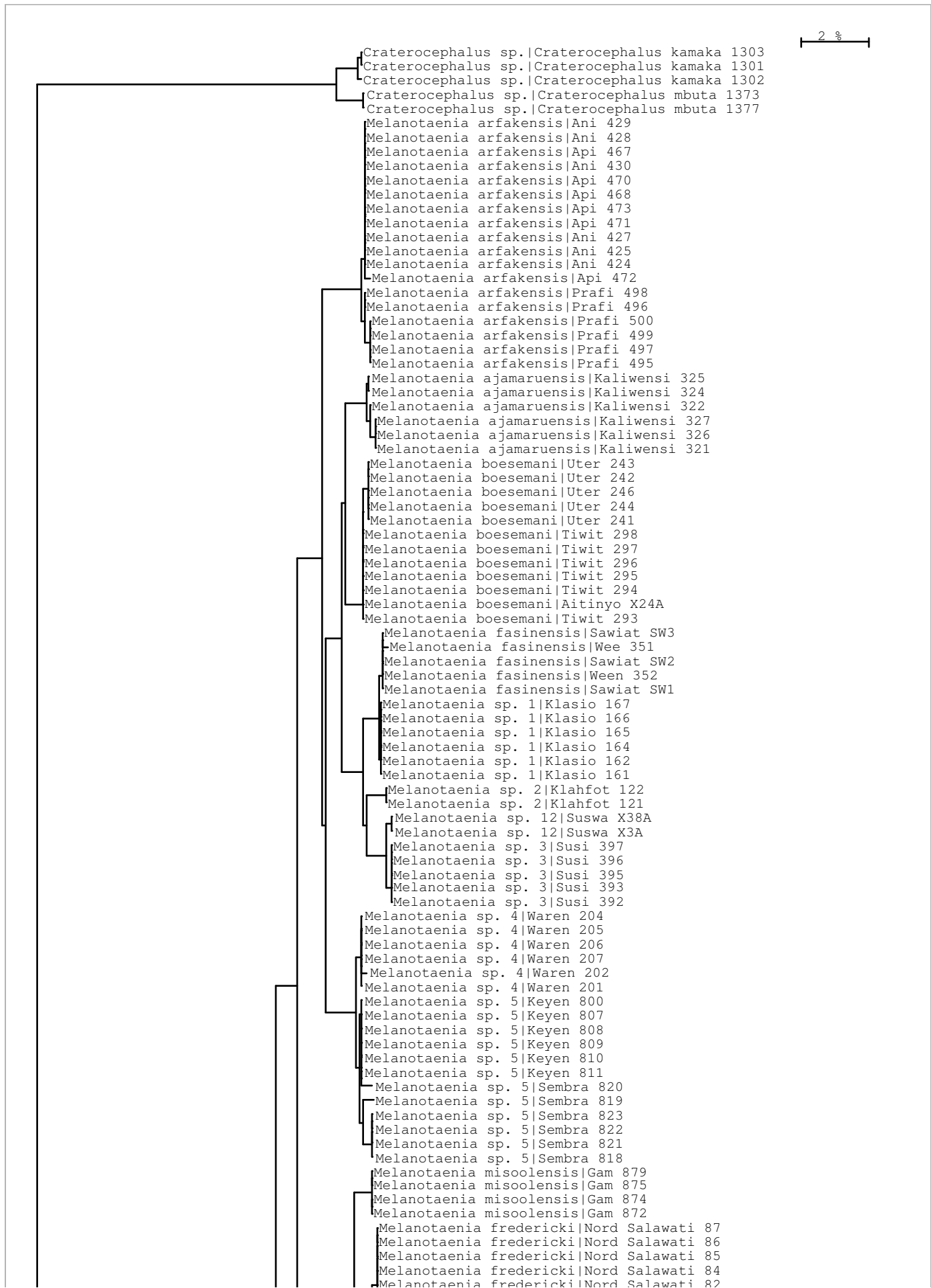


# BOLD TaxonID Tree

Project : Barcoding Indonesian Fishes - part I. Rainbowfishes from Pap...  
Date : 21-October-2011  
Data Type : Nucleotide  
Distance Model : Kimura 2 Parameter  
Marker : COI-5P  
Codon Positions : 1st, 2nd, 3rd  
Labels : SampleID,  
Filters : Length > 200  
Colorization : [blue]=Stop Codons [red]=Contamination or misidentification

Sequence Count : 350  
Species count : 67  
Genus count : 5  
Family count : 2  
Unidentified : 2



Melanotaenia fredericki|Nord Salawati 85  
 Melanotaenia fredericki|Nord Salawati 84  
 Melanotaenia fredericki|Nord Salawati 82  
 Melanotaenia fredericki|Nord Salawati 81  
 Melanotaenia fredericki|M.fredericki Warsamson 669  
 Melanotaenia fredericki|M.fredericki Warsamson 667  
 Melanotaenia fredericki|M.fredericki Warsamson 666  
 Melanotaenia fredericki|M.fredericki Warsamson 664  
 Melanotaenia fredericki|M.fredericki Warsamson 663  
 Melanotaenia fredericki|M.cf. fredericki Sausapor S2  
 Melanotaenia fredericki|M.cf. fredericki Sausapor S7  
 Melanotaenia fredericki|M.cf. fredericki Sausapor S8  
 Melanotaenia fredericki|M.cf. fredericki Sausapor S6  
 Melanotaenia fredericki|M.cf. fredericki Sausapor S3  
 Melanotaenia fredericki|M.cf. fredericki Sausapor S1  
 Melanotaenia fredericki|M.fredericki Warsamson 668  
 Melanotaenia fredericki|HBM 11  
 Melanotaenia fredericki|HBM 10  
 Melanotaenia fredericki|HBM SRB  
 Melanotaenia fredericki|HBM 12  
 Melanotaenia fredericki|HBM SRA  
 Melanotaenia batanta|Warmon 912  
 Melanotaenia batanta|Warmon 911  
 Melanotaenia batanta|Warmon 910  
 Melanotaenia batanta|Warmon 906  
 Melanotaenia batanta|Warmon 905  
 Melanotaenia misoolensis|Gam 878  
 Melanotaenia misoolensis|Gam 871  
 Melanotaenia salawati|Doktor 886  
 Melanotaenia salawati|Doktor 885  
 Melanotaenia salawati|Doktor 884  
 Melanotaenia salawati|Doktor 883  
 Melanotaenia salawati|Doktor 882  
 Melanotaenia salawati|Doktor 881  
 Melanotaenia sp. 6|Tisbo 584  
 Melanotaenia sp. 6|Tisbo 585  
 Melanotaenia sp. 6|Tisbo 620  
 Melanotaenia sp. 6|Tisbo 621  
 Melanotaenia sp. 6|Tisbo 583  
 Melanotaenia sp. 6|Tisbo 582  
 Melanotaenia irianjaya|Kali Padang 833  
 Melanotaenia irianjaya|Kali Padang 834  
 Melanotaenia irianjaya|Kali Padang 835  
 Melanotaenia irianjaya|Kali Padang 836  
 Melanotaenia irianjaya|Kali Padang 837  
 Melanotaenia irianjaya|Kali Padang 838  
 Melanotaenia irianjaya|Fruata FR6  
 Melanotaenia irianjaya|Fruata FR5  
 Melanotaenia irianjaya|Fruata FR4  
 Melanotaenia irianjaya|Fruata FR3  
 Melanotaenia irianjaya|Fruata FR2  
 Melanotaenia irianjaya|Fruata FR1  
 Melanotaenia angfa|Naramasa 1107  
 Melanotaenia angfa|Naramasa 1106  
 Melanotaenia angfa|Naramasa 1102  
 Melanotaenia angfa|Naramasa 1101  
 Melanotaenia angfa|Rumberpon 701  
 Melanotaenia angfa|Rumberpon 705  
 Melanotaenia angfa|Siku 541  
 Melanotaenia angfa|Siku 542  
 Melanotaenia angfa|Siku 543  
 Melanotaenia angfa|Siku 544  
 Melanotaenia angfa|Siku 545  
 Melanotaenia angfa|Siku 618  
 Melanotaenia angfa|Mammeh 723  
 Melanotaenia angfa|Mammeh 724  
 Melanotaenia angfa|Mammeh 726  
 Melanotaenia angfa|Mammeh 728  
 Melanotaenia angfa|Rumberpon 707  
 Melanotaenia angfa|Rumberpon 706  
 Melanotaenia angfa|Rumberpon 704  
 Melanotaenia angfa|Rumberpon 700  
 Melanotaenia parva|Kurumoi 628  
 Melanotaenia parva|Kurumoi 627  
 Melanotaenia angfa|Yakati 729  
 Melanotaenia parva|Kurumoi 629  
 Melanotaenia angfa|Yakati 738  
 Melanotaenia angfa|Yakati 734  
 Melanotaenia angfa|Yakati 741  
 Melanotaenia angfa|Yakati 740  
 Melanotaenia parva|Kurumoi 626  
 Melanotaenia parva|Kurumoi 624  
 Melanotaenia parva|Kurumoi 623  
 Melanotaenia ammeri|Gusimawa 1524  
 Melanotaenia ammeri|Gusimawa 1523  
 Melanotaenia ammeri|Gusimawa 1522  
 Melanotaenia ammeri|Gusimawa 1521  
 Melanotaenia ammeri|Gusimawa 1520  
 Melanotaenia ammeri|Gusimawa 1519  
 Melanotaenia ammeri|Lengguru 1361  
 Melanotaenia ammeri|Lengguru 1364

