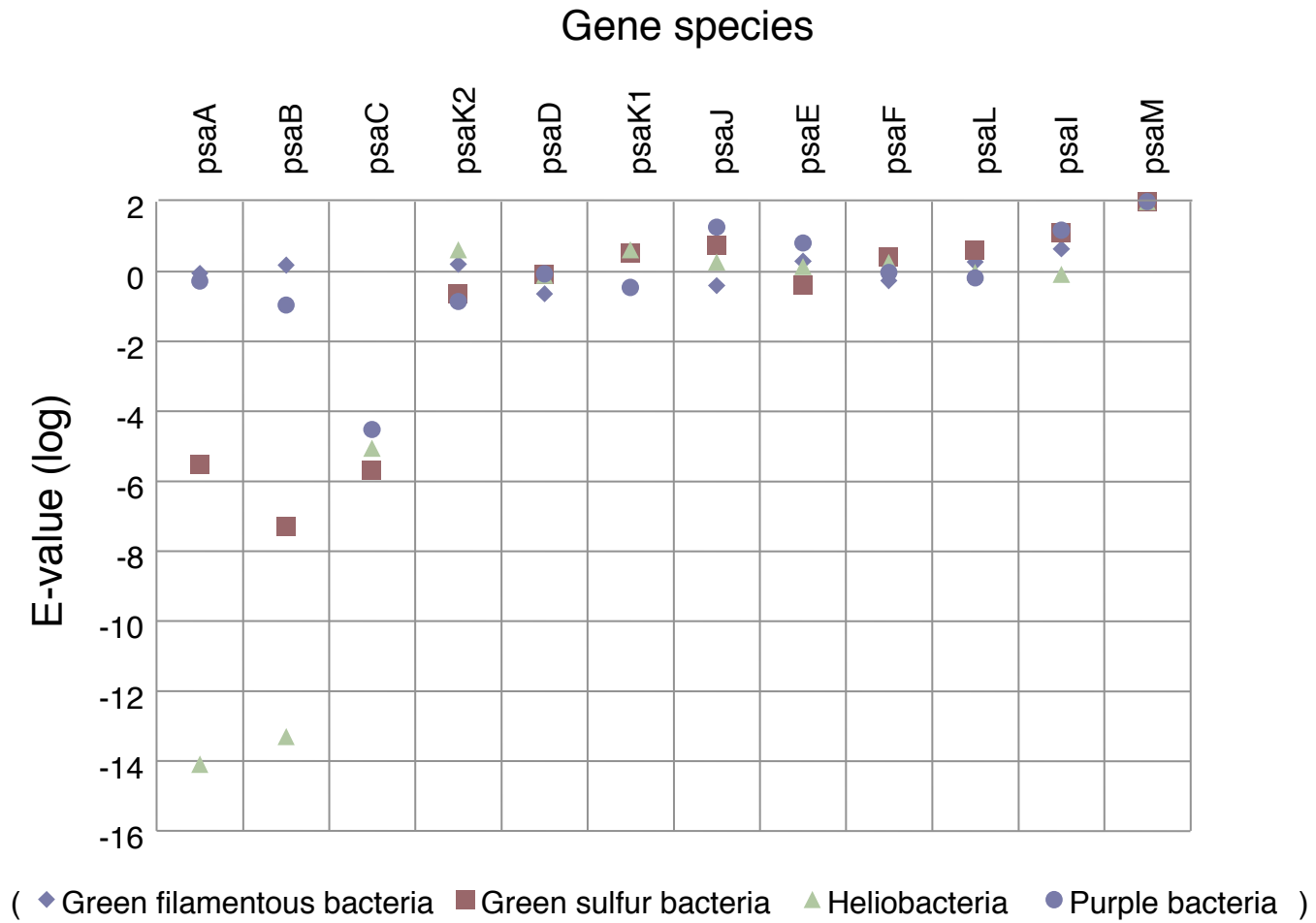
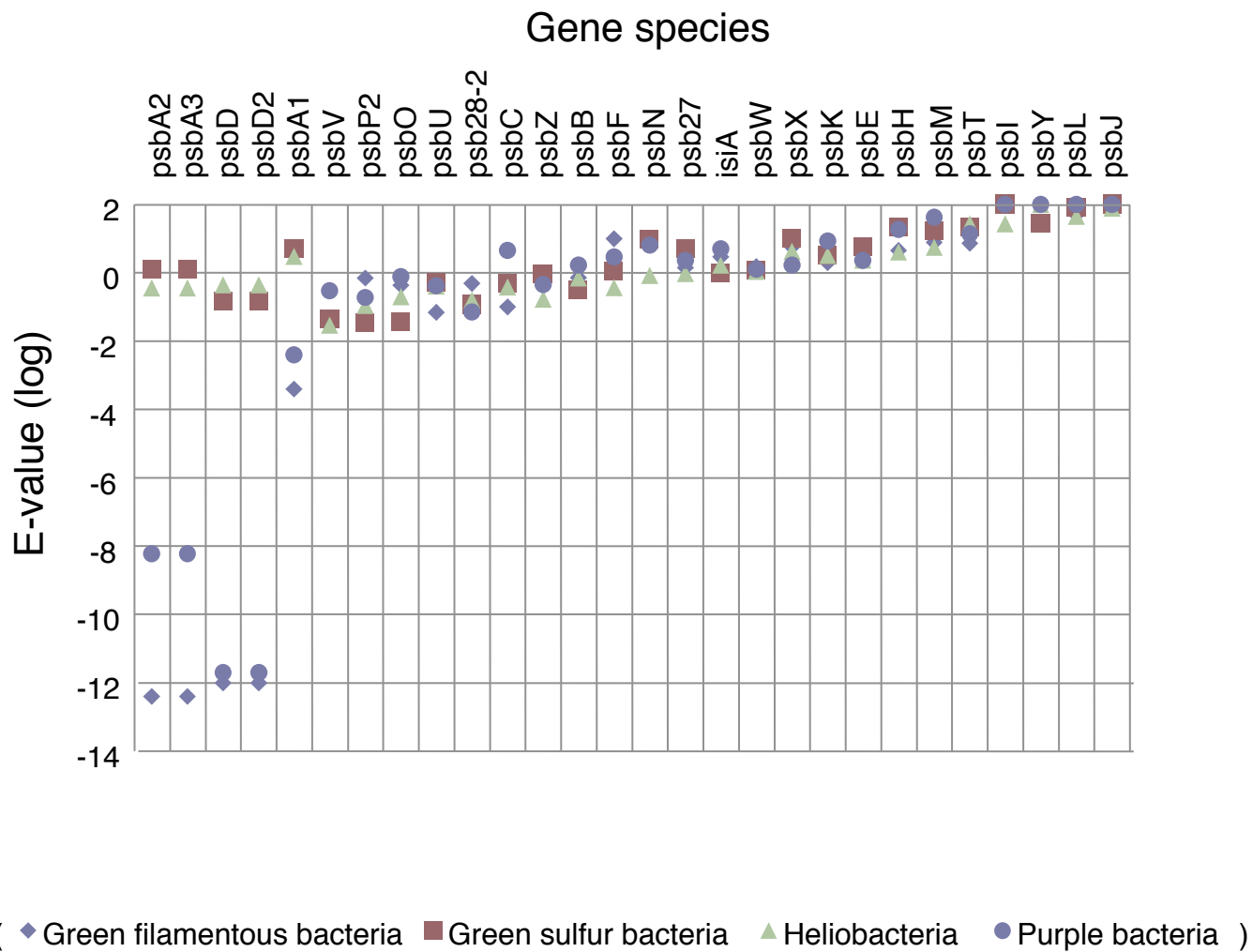


Figure S4

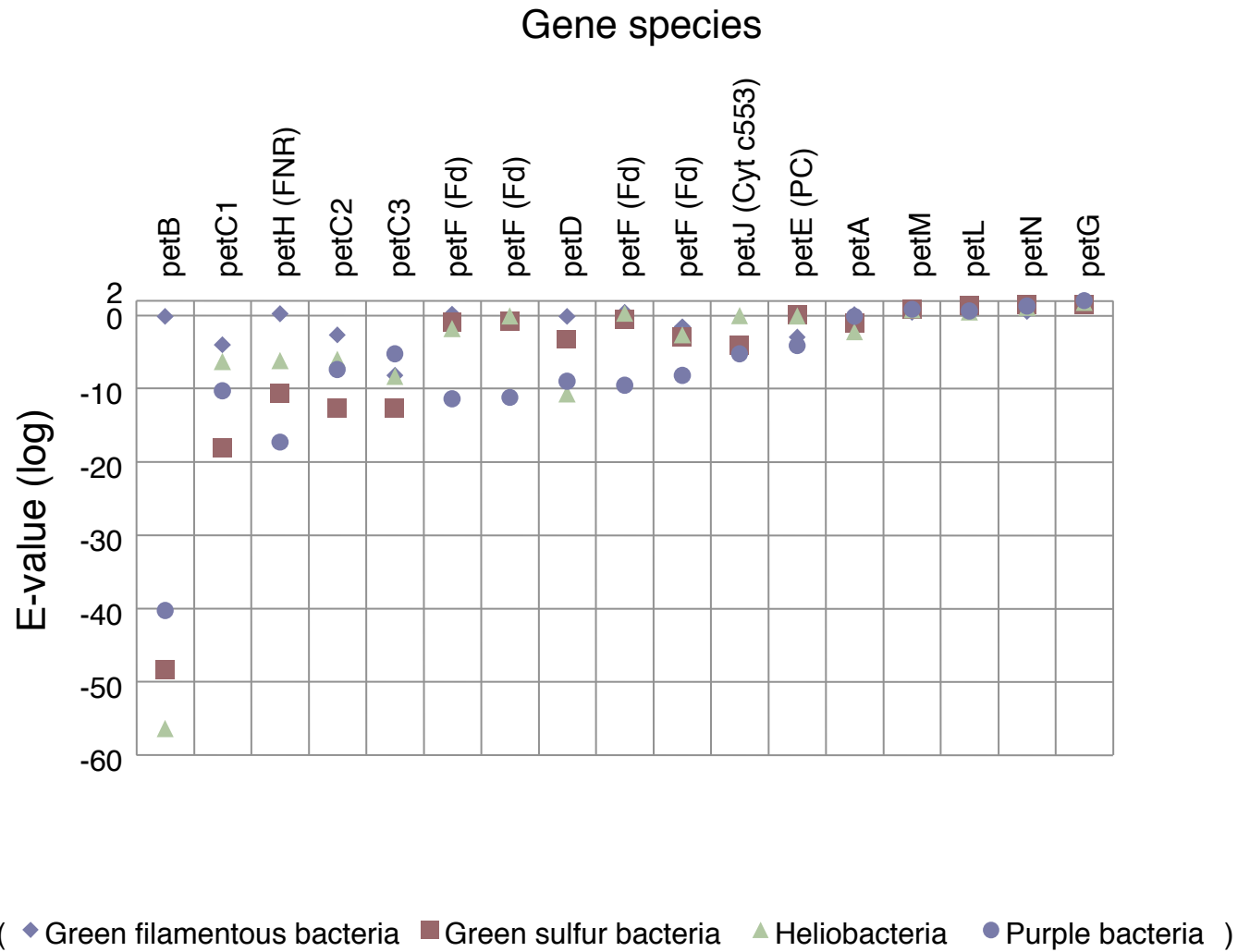
a) - PSI proteins



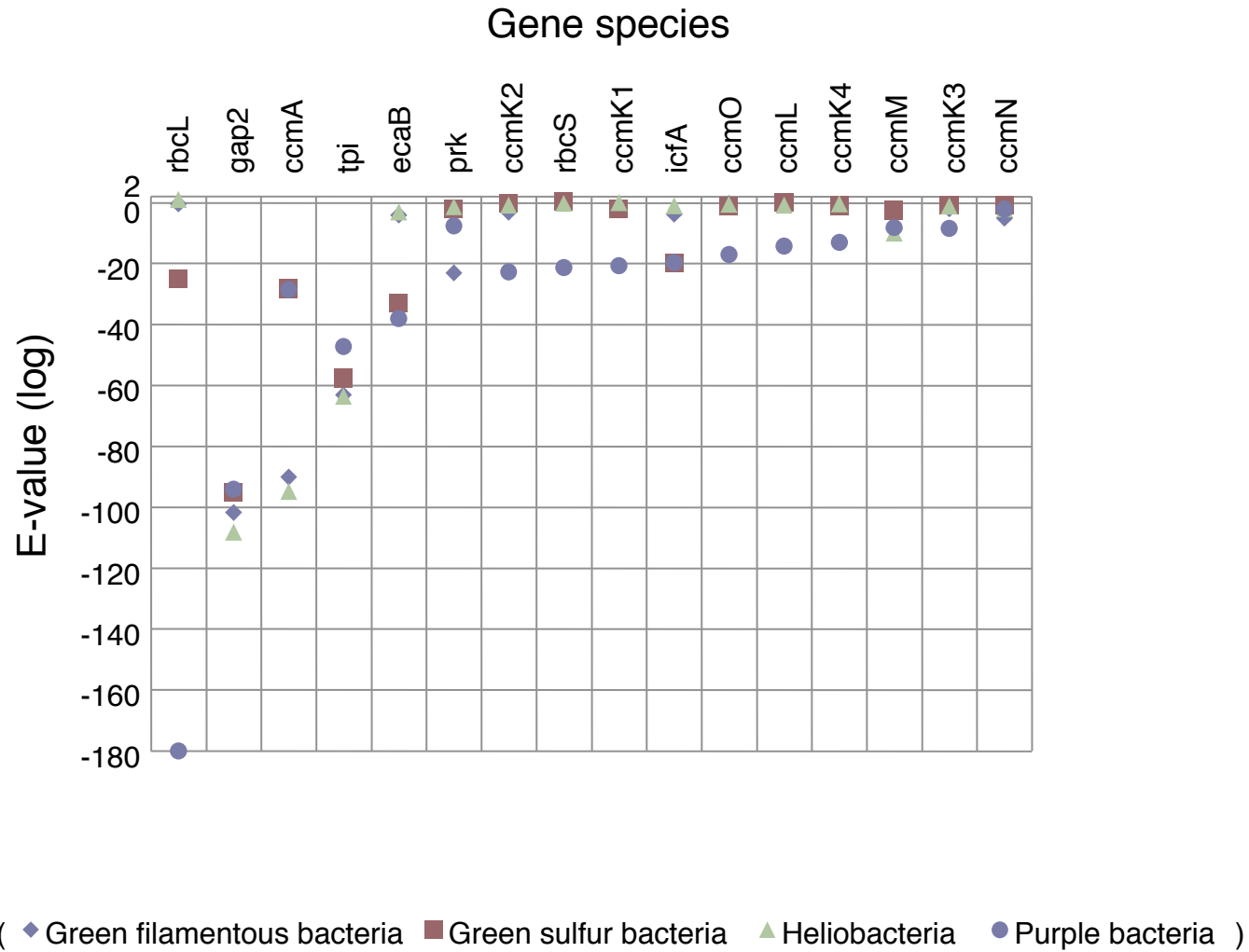
b) - PSII proteins



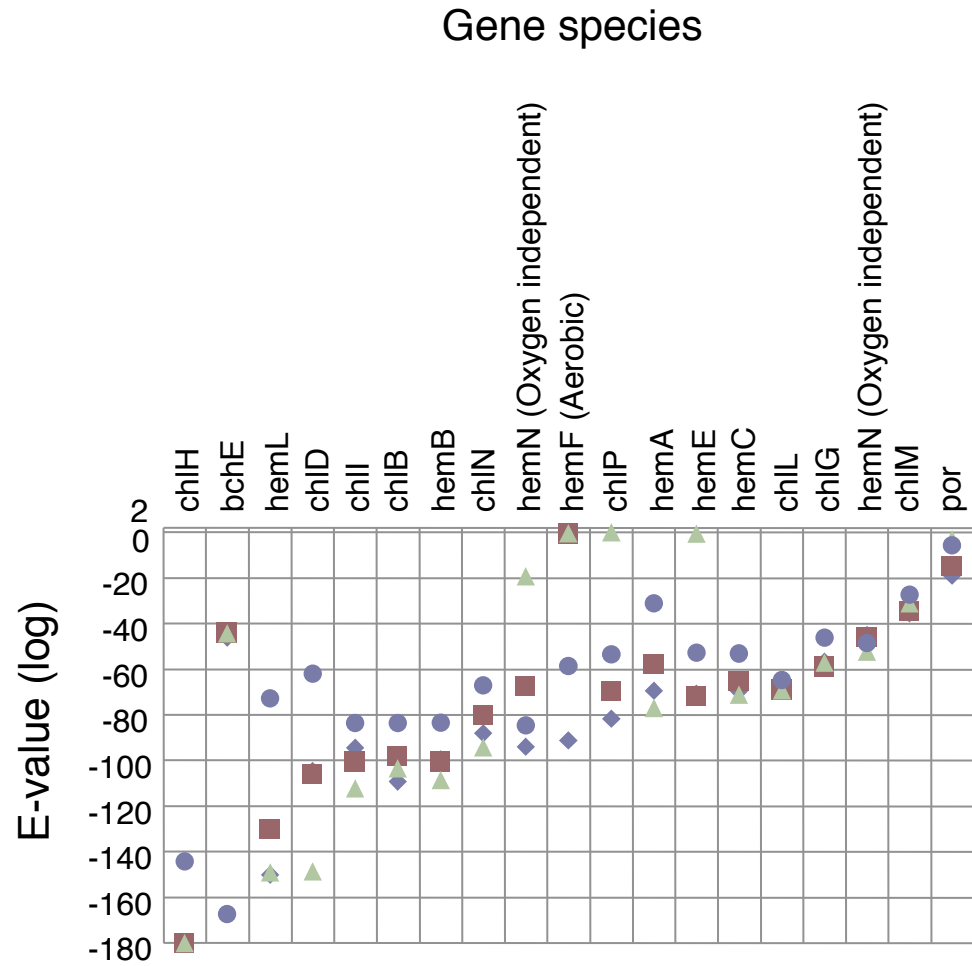
c) - Cytochrome b_6f proteins and electron carrier proteins



d) - Carbon concentration and assimilation



e) - Chlorophyll biosynthesis



(◆ Green filamentous bacteria ■ Green sulfur bacteria ▲ Heliobacteria ● Purple bacteria)